

Recalibrating the Touch Screen

Nintendo®

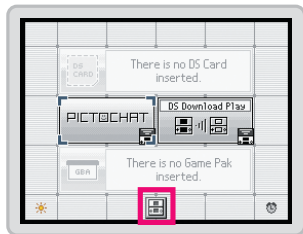
If the Touch Screen is not responding properly, try recalibrating it. The procedure is as follows.

* If the Touch Screen is misaligned so much that it is difficult to touch the panels, make your selection using the +Control Pad and the A Button.

1 Select

Touch the  panel at the bottom of the DS Menu Screen.

The DS System Settings Selection Screen will appear.



DS Menu Screen

2 Select

Touch the Touch Screen panel. The Touch Screen Calibration Screen will appear. Follow the on-screen instructions.



DS System Settings Selection Screen

NINTENDO DS®

Communication Redefined
PICTOCHAT™

Instruction Booklet

**Built-in
Software!**

No Game Card
required



WARNING: PLEASE CAREFULLY READ THE INSTRUCTION AND SEPARATE HEALTH AND SAFETY PRECAUTIONS BOOKLETS BEFORE USING YOUR NINTENDO DS®, GAME CARD OR ACCESSORY.

Nintendo DS wireless communication (including PictoChat™) is not monitored.

PictoChat allows users to communicate wirelessly with other Nintendo DS and Nintendo DS Lite users within a range of approximately 20 metres (65 feet). Up to 16 users can chat at one time in a PictoChat "chat room". In addition, some games may also have similar chat features programmed in to the game.

THIS COMMUNICATION IS NOT MONITORED OR CONTROLLED. MESSAGES MAY BE RECEIVED BY STRANGERS AND COMMUNICATED FROM STRANGERS.

To ensure your privacy do not give out personal information such as last name, phone number, age, e-mail or home address when communicating with others.

Children who use Nintendo DS should be warned against communicating with or meeting strangers or communicating personal information which strangers may receive and read.

Whatever date you choose to enter as your month/day of birth (year is not asked for), an "it's your birthday" message will be communicated in the chat room on that date. Whatever name the user enters as their nickname during the system setup (see "System Setup" below) can be viewed by other Nintendo DS users while using PictoChat. An adult should assist children with the system setup.

For more information, visit <http://www.nintendo.com.au/ds/privacy>



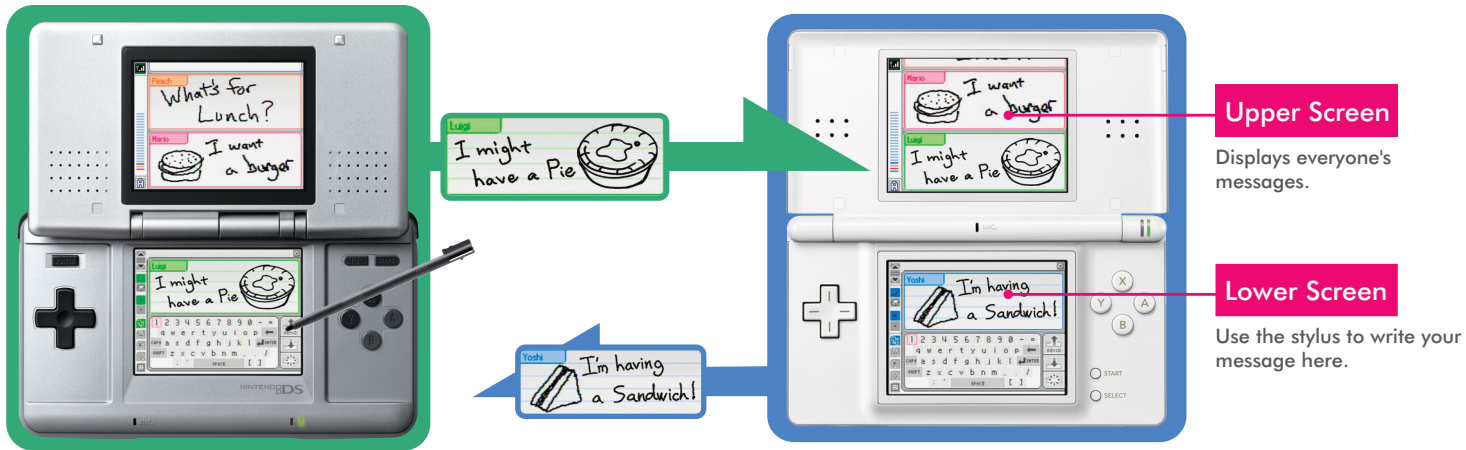
Important Touch Screen Guidelines

- Use the stylus included with your system on the Touch Screen.
- Do not use the stylus if it is damaged or distorted.
- Do not stroke or press the Touch Screen with excessive pressure.
- Do not use the stylus on the upper screen.
- Do not allow dirt, dust, food, liquid or any other foreign material to come into contact with the Touch Screen.

What's PictoChat?

PictoChat allows you to send and receive wireless messages and drawings easily, to and from up to 15 other DS users. It is built into the Nintendo DS system, so all you have to do is turn the power ON, and you're ready to go!

Up to 16 participants!



Turn the power on

With no Game Card and no Game Pak inserted, turn the system ON.

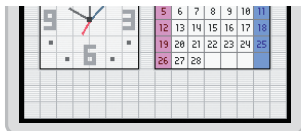
* When you turn the system power ON for the first time, the Initial Settings Screen will appear. After completing the initial settings, turn the system power ON again. For more details, refer to the instruction booklet included with your system.



Health and Safety Screen

Select PictoChat

The DS Menu Screen will appear. Touch the PictoChat panel.

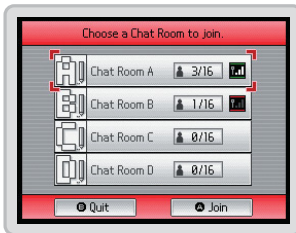


DS Menu Screen

Select a chat room

The Chat Room Selection Screen will appear. Touch the chat room that you wish to join.

* Depending on your environment, you may experience difficulty in entering a chat room. In such a case, select a different chat room.



Chat Room Selection Screen

Ready!

The PictoChat Screen will appear.

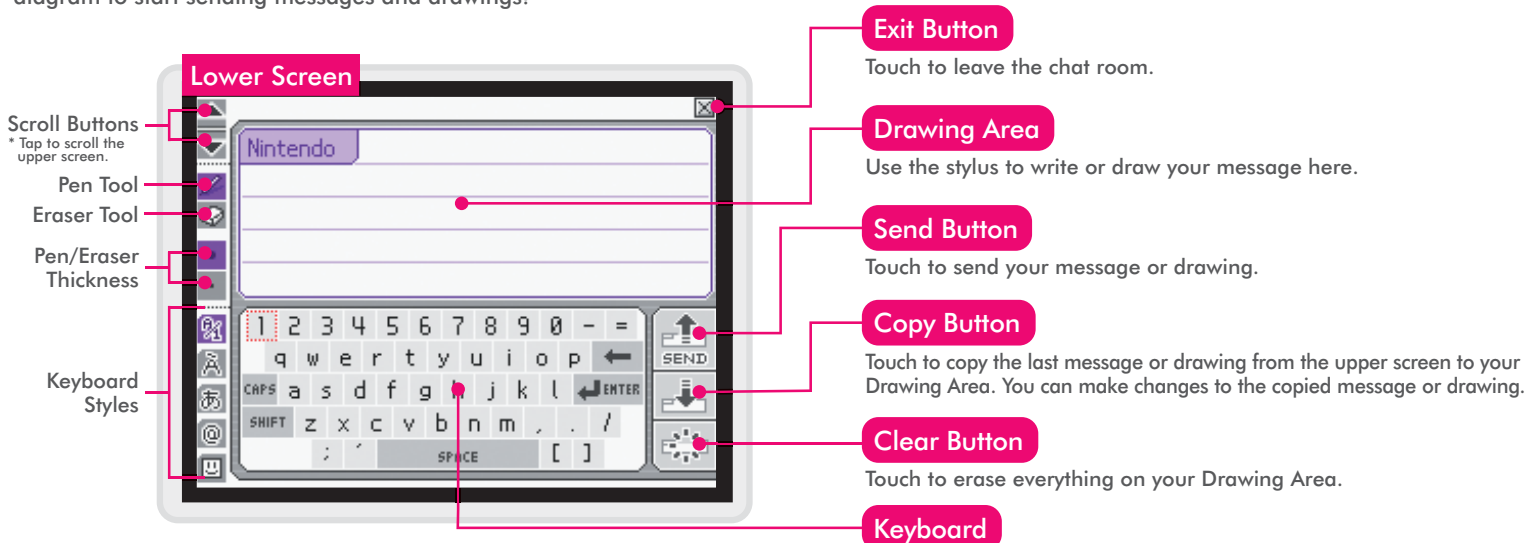


PictoChat Screen

Using PictoChat

PictoChat is controlled mainly with the stylus. Refer to the following diagram to start sending messages and drawings!

► For more detailed instructions, refer to the instruction booklet included with your system.



Exit Button

Touch to leave the chat room.

Drawing Area

Use the stylus to write or draw your message here.

Send Button

Touch to send your message or drawing.

Copy Button

Touch to copy the last message or drawing from the upper screen to your Drawing Area. You can make changes to the copied message or drawing.

Clear Button

Touch to erase everything on your Drawing Area.

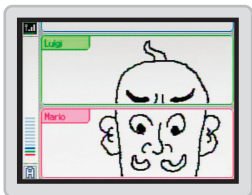
Keyboard

Touch the keys to type text messages easily.

* You can change the keyboard layout by touching and sliding the keys.

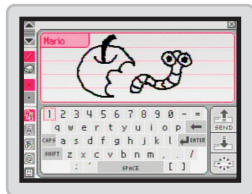
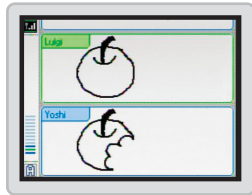
It's up to you to come up with ways to play with PictoChat. Try inventing new games! Here are some examples.

Finish the Picture



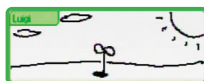
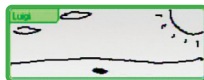
➦ Add the next piece to the collaborative art project.

Copy 'n' Morph



➦ Copy and make changes to someone else's drawing.

Flip Books



➦ Make your own flip book animation!

1 Draw a picture, then touch the Send Button. Touch the Copy Button to copy that picture, make some changes, then touch the Send Button again. (Repeat)



2 Press the **R Button** to go back to show the very first picture on the upper screen.




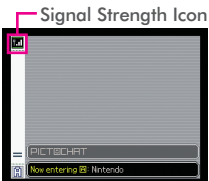
3 Watch the animation by pressing the **R Button** while holding down the **L Button**.

Important Wireless Communication Guidelines





- PictoChat uses wireless communication. Do not use PictoChat in places where the use of wireless devices is prohibited (such as on board an aircraft, in a hospital, or on a train or a bus).

* When wireless communication is ON, the power indicator LED will blink at a variable rate.

- An icon  (Signal Strength icon) is shown at the upper left corner of the upper screen to indicate the strength of the wireless signal in four levels. Stronger signals provide smoother wireless communication.



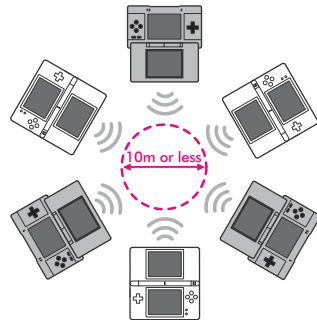
PictoChat Upper Screen

				
Antennas	0	1	2	3
Signal Strength	WEAK ← → STRONG			

- Depending on your environment, you may experience difficulty in joining a chat room, even with 3 antennas shown by the Signal Strength icon. In such a case, select a different chat room.

- For smoother wireless communication, keep the following in mind.

- Players should be within 10m of each other, or at a distance where 2 or more antennas are shown by the Signal Strength icon.



- The systems should be facing each other, with no obstructions between them.

- If wireless communication is affected by other devices (such as GBA Wireless Adapter, Nintendo GameCube WaveBird Wireless Controller, wireless LAN, microwave ovens, cordless devices, etc.), move to another location or turn off the interfering device.

► For more detailed instructions, refer to the instruction booklet included with your system.

Turn the power on


With no Game Card and no Game Pak inserted, turn the system ON.

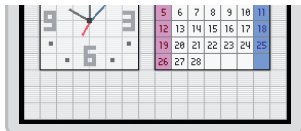


Health and Safety Screen



Select

The DS Menu Screen will appear. Touch the  panel at the bottom of the screen.

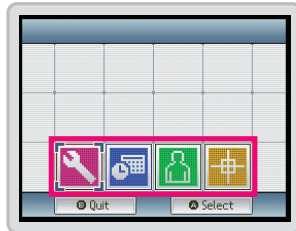


DS Menu Screen



Selecting the setting category

The DS System Settings Selection Screen will appear. There are four panels on this screen. Touch a panel to change settings for that category.



DS System Settings Selection Screen



Options Panel

Lets you change the system language, GBA Game Pak display, and the start mode settings.



Date & Time Panel

Lets you change the date, time, and alarm settings.



User Panel

Lets you change the user name, birthday, user colour, and comment settings.



Touch Screen Panel

Lets you recalibrate the Touch Screen. If the Touch Screen is not responding properly, select this panel to recalibrate the screen.