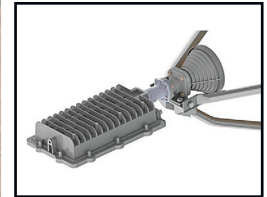


96 cm Rx/Tx Class I Antenna System



PRODUCT SPECIFICATIONS

Detail Photos
(on right from top to bottom)
Pre-assembled Precision
Az/EI Mount
Low Cross Pol Feed
Assembly



96 cm Rx/Tx Class I Antenna System

TYPE 961

The Skyware Global Type 961 96 cm Class I Rx/Tx Antenna is a rugged commercial grade product suitable for the most demanding applications. The reflector is thermoset-molded for strength and surface accuracy. Molded into the rear of the reflector is a network of support ribs which strengthens the antenna and sustains its critical parabolic shape necessary for transmit performance. The reflector optics feature a long focal length for excellent cross-pol performance.

The heavy gauge steel Az/EI mount provides a rigid support to the reflector. This mount secures the antenna to any 60mm (2.38") O.D. mast and prevents slippage in high winds. A special powder paint process offers protection from weather-related corrosion.

The antenna features a unique feed which provides cross-pol performance that exceeds industry standards.

- All materials comply with EU directive No. 2002/95/EC (RoHS).
- One-piece precision offset thermoset-molded reflector.
- Long focal length optics for low cross-pol performance.
- Available with Ku-Band co-pol or cross-pol feeds.
- Galvanized 19 mm (.75") O.D. feed support legs for lightweight outdoor units (ODU's).
- Plated hardware for maximum corrosion resistance
- Az/EI mount includes both elevation and azimuth fine adjustments
- Class I system designed for typical 1 W and 2 W Ku-band RF Electronics*

* 1.7 kg or 3.7 lb max. weight (For BUC and LNB)
1.9 kg or 4.2 lb max. weight (For Transceiver)

The antenna features a unique feed which provides cross-pol performance that exceeds industry standards



Satcom solutions for the long haul

REV 12/14-01
Page 1 of 2

• PRODUCT SPECIFICATIONS

Type Approval Information

Antenna Model.....62-9615401
Eutelsat Standard.....VSAT
Approval Code.....EA-A033

(See Our Website for Complete List of Type Approvals)

RF Performance

Effective Aperture 96 cm (38 in)

Operating Frequency

TX.....13.75 -14.50 GHz
RX.....10.70 -12.75 GHz

PolarizationLinear, Orthogonal
(Col-Pol Optional)

Gain (± 0.2 dB)

TX.....41.2 dBi @ 14.3 GHz
RX.....39.7 dBi @ 12.0 GHz

3 dB Beamwidth

TX.....1.5° @ 14.3 GHz
RX.....1.8° @ 12.0 GHz

Sidelobe Envelope (Tx, Co-Pol dBi)

$1.8^\circ < \theta < 20^\circ$ 29-25 log θ
 $20^\circ < \theta < 26.3^\circ$ -3.5
 $26.3^\circ < \theta < 48^\circ$ 32-25 log θ
 $48^\circ < \theta < 180^\circ$ -10 (Typical)

Antenna Cross-Polarization...>30db in 1dB Contour

Antenna Noise Temperature

10° EL.....53° K
20° EL.....39° K
30° EL.....32° K

VSWR

Tx.....1.3:1
Rx.....1.5:1

Isolation (Port to Port)

Tx.....90db
Rx.....>40db

Feed Interface

Tx.....WR75 Flat Flange
Rx.....WR75 Flat Flange

(All specifications typical)

96cm Rx/Tx Class I Antenna System

Mechanical Performance

Reflector Material.....Glass Fiber Reinforced Polyester

Antenna Optics.....One-Peice Offset Feed Prime Focus

Mount Type.....Elevation over Azimuth

Elevation Adjustment Range.....5° - 90° Continuous
Fine Adjustment

Azimuth Adjustment Range.....360° Continuous
 $\pm 5^\circ$ Fine Adjustment

Mast Pipe Interface.....73-76 mm (2.38 in - 3.00 in)
Diameter

Enviromental Performance

Wind Loading

Operational.....50 mph (80 km/h)

Survival.....125 mph (200 km/h)

Temperature.....-50°C to +80°C

Humidity.....0 to 100% (Condensing)

Atmosphere.....Standard Hardware 500 Hrs SST
Requirements (ASTM B-117)

Solar Radiation.....360 BTU/h/ ft²

Shock and Vibration.....As Encountered during
Shipping and handling



REV 12/14-01
Page 2 of 2



Satcom solutions for the long haul

1315 Outlet Center Drive, Smithfield, NC 27577 T + 1 919 934 9711 F + 1 919 989 2274 Sales @ Skyware Global.com

All designs, specification and availabilities of products and services presented in this bulletin are subject to change without notice. ©2014 Skyware Global