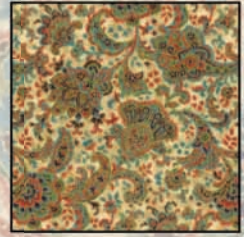


# FLORENCE

Quilt design by Larene Smith featuring fabrics from the "Florence" collection by Hoffman California Fabrics



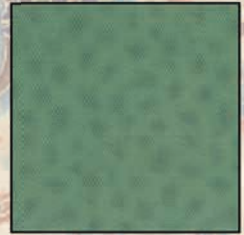
K7148 369G-Monaco/Gold



K7147 369G-Monaco/Gold



K7149 369G-Monaco/Gold



K7151 21G-Teal/Gold

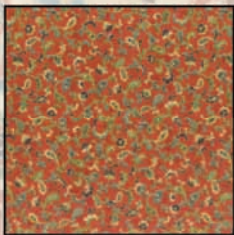


K7150 369G-Monaco/Gold

Free pattern available from [www.hoffmanfabrics.com](http://www.hoffmanfabrics.com) Quilt Size 71" x 86"



K7145 369G-Monaco/Gold



K7146 369G-Monaco/Gold



G8555 22G-Ivory/Gold



C8555 6G-Brown/Gold

**HOFFMAN FABRICS**  
CALIFORNIA-INTERNATIONAL

# "Florence" featuring fabrics by Hoffman California Fabrics

## Yardage Chart

Monaco/Gold Colorway	Earl Grey/Gold Colorway	
K7148 Monaco/Gold #369G	K7148 Earl Grey/Gold #410G	½ yard
K7147 Monaco/Gold #369G	K7147 Earl Grey/Gold #410G	½ yard
K7146 Monaco/Gold #369G	K7146 Earl Grey/Gold #410G	½ yard
K7149 Monaco/Gold #369G	K7149 Earl Grey/Gold #410G	1 ¼ yards
K7145 Monaco/Gold #369G	K7145 Earl Grey/Gold #410G	5/8 yards
K7151 Teal/Gold #21G*	K7151 French Blue/Gold # F7G*	1 ¼ yards
G8555 Brown/Gold #6G	K7151 Navy/Gold #19G	1 ¾ yards
G8555 Ivory/Gold #22G	G8555 Antique Beige/Gold #A25G	1 ½ yards
K7150 Monaco/Gold #369G	K7150 Earl Grey/Gold #410G	1 ⅛ yards

Black/Gold Colorway	
K7148 Black/Gold #4G	½ yard
K7147 Black/Gold #4G	½ yard
K7146 Antique Tan/Gold #A64G	½ yard
K7149 Black/Gold #4G	1 ¼ yards
K7145 Black/Gold #4G	5/8 yards
G8555 Brown/Gold #6G*	1 ⅛ yards
G8555 Antique Beige/Gold #A25G	⅓ yard
G8555 Black/Gold #4G	1 ¾ yards
G8555 Ivory/Gold #22G	1 ½ yards
K7150 Black/Gold #4G	1 ⅛ yards

Note: These are estimated yardages. Final yardages will be on pattern.

\*Yardage includes binding.

BACKING: Coordinate of your choice. 5 yards (1kit); 60 yards (12 kits)

### Earl Grey/Gold



K7148 410G-Earl Grey/Gold



K7147 410G-Earl Grey/Gold



K7146 410G-Earl Grey/Gold



K7149 410G-Earl Grey/Gold



K7145 410G-Earl Grey/Gold



K7151 F7G-French Blue/Gold



K7151 19G-Navy/Gold



G8555 A25G-Antique Beige/Gold



K7150 410G-Earl Grey/Gold

### Black/Gold



K7148 4G-Black/Gold



K7147 4G-Black/Gold



G8555 A25G-Antique Beige/Gold



K7146 A64G-Antique Tan/Gold



K7149 4G-Black/Gold



G8555 6G-Brown/Gold



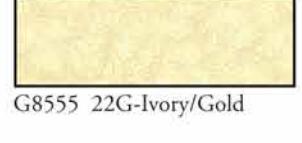
K7145 4G-Black/Gold



K7150 4G-Black/Gold



G8555 4G-Black/Gold



G8555 22G-Ivory/Gold

View swatches and download quilt patterns at [www.hoffmanfabrics.com](http://www.hoffmanfabrics.com)

# Florence

## Hoffman California Fabrics – Florence Collection

Finished Wall Hanging Size: 71" x 86"

© 2013 – Copyright – All Rights Reserved

Design and Instruction by Larene Smith

The Quilted Button, Mission Viejo, CA



Black/Gold



Earl Grey/Gold



Monaco/Gold

### General Information

- ☞ All seams are sewn with a 1/4" seam allowance.
- ☞ Pre-wash and press with spray starch before cutting.
- ☞ Press seams open as much as possible to decrease bulk.
- ☞ Label fabric as cut for less confusion.
- ☞ The finished block will measure 15" square and there are (20) of them.

### Fabric Requirements

		<u>Monaco/Gold</u>	<u>Black/Gold</u>	<u>Earl Grey/Gold</u>
1/2 Yard	Fabric A	K7148-Monaco Gold	K7148- Black Gold	K7148-Earl Grey Gold
1/2 Yard	Fabric B	K7147- Monaco Gold	K7147- Black Gold	K7147- Earl Grey Gold
1/2 Yard	Fabric C	K7146- Monaco Gold	K7146-Antique Tan Gold	K7146- Earl Grey Gold
1-1/4 Yards	Fabric D	K7149- Monaco Gold	K7149- Black Gold	K7149- Earl Grey Gold
5/8 Yards	Fabric E	K7145- Monaco Gold	K7145- Black Gold	K7145- Earl Grey Gold
1-1/4 Yards	Fabric F***	K7151- Teal Gold	See Fabric J and K	K7151- French Blue
1-3/4 Yards	Fabric G	G8555- Brown Gold	G8555- Black Gold	K7151- Navy Gold
1-1/2 Yards	Fabric H	G8555- Ivory Gold	G8555- Ivory Gold	G8555- Antique Beige Gold
1-1/8 Yards	Fabric I	K7150-Monaco Gold	K7150-Black Gold	K7150- Earl Grey Gold
1/8 Yard	Fabric J		G8555-A25G Antique Beige Gold	
1-1/8 Yard***	Fabric K		G8555-6G Brown Gold	
5 Yards	Fabric L	BACKING FOR ALL COLORWAYS (K7149)		

\*\*\* Includes Inner Border and Binding

### Special Notions

6 1/2" x 24-12" Ruler, 15-1/2" Square Ruler, Rotary Cutter, Cutting Mat, Scissors, Straight Pins, Thread to match fabric, Iron and Pressing Mat, Sewing Machine in good working condition.

### Step 1 – Preparing the Fabric

1. Fabric A – Cut (2) strips at 6-7/8” x WOF – Sub-cut into (10) 6-7/8” squares then cross-cut ONCE to yield (20) of Triangle A – “TA”.
2. Fabric B – Cut (2) strips at 6-7/8” x WOF – Sub-cut into (10) 6-7/8” squares then cross-cut ONCE to yield (20) of Triangle B – “TB”.
3. Fabric C – Cut (2) strips at 6-1/4” x WOF – Sub-cut into (10) 6-1/4” squares then cross-cut TWICE to yield (40) of Triangle C – “TC”.
4. Fabric D – Cut (4) strips at 10-3/8” x WOF – Sub-cut into (20) 10-3/8” x 6-1/8” rectangles – “RA”.
5. Fabric E – Cut (2) strips at 10-3/8” x WOF – Sub-cut into (20) 10-3/8” x 4” rectangles – “RB”.
6. Fabric F – Cut as follows:
  - a. Cut (1) strip at 3-1/4” x WOF – Sub-cut into (10) 3-1/4” squares then cross-cut TWICE to yield (40) of Triangle D – “TD”. --- Note: This is Fabric J if using the “Black/Gold” Collection.
  - b. Cut (7) strips at 1-1/2” x WOF – Inner Border. ---- Note: This is Fabric K if using the “Black/Gold” Colorway.
  - c. Cut (9) strips at 2-1/2” x WOF – Binding. ---- Note: This is Fabric K if using the “Black/Gold” Colorway.
7. Fabric G – Cut (46) strips at 1-1/4” x WOF.
8. Fabric H – Cut (23) strips at 1-1/4” x WOF and (2) strips at 11-1/4” x WOF – Sub-cut into (40) 11-1/4” x 1-1/4” rectangles.
9. Fabric I – Cut (8) strips at 4-3/4” x WOF – Outer Border.

**Note: The blocks are sewn together in PARTS and then rotated when sewing the quilt top together. I found it easier to sew together in parts for less confusion.**

### Step 2 – Preparing the Strip Sets

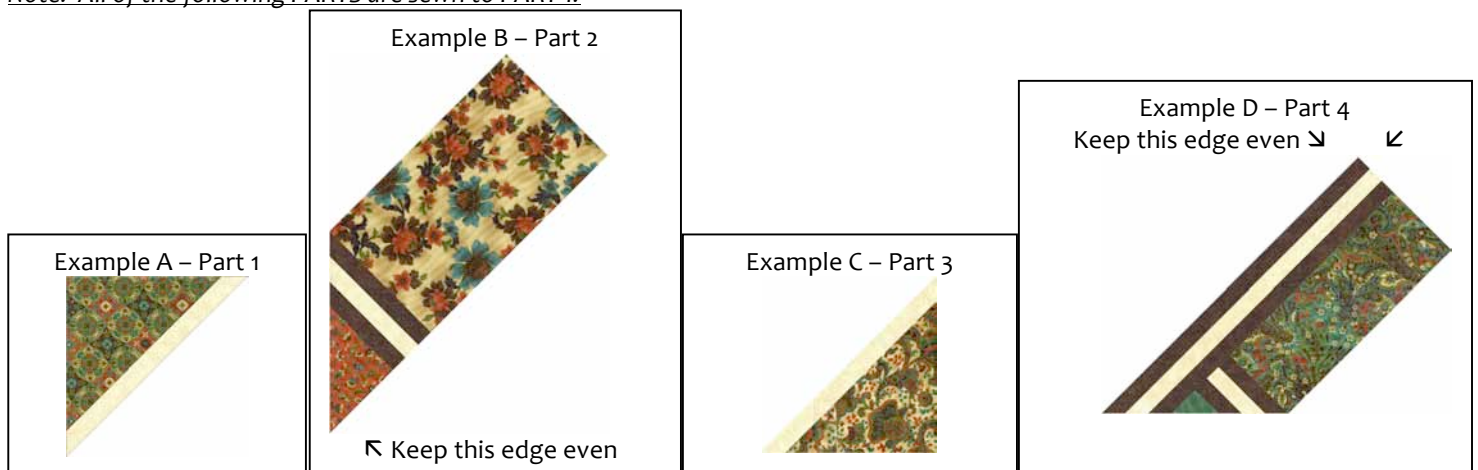
10. Sew (1) Fabric G 1-1/4” strip to each edge of Fabric H 1-1/4” strip to make a new strip at 2-3/4” x WOF – Make (23) new strips.
11. From each strip cut (1) of each of the following – label and set aside for use later:
  - a. Set A – 2-3/4” x 12-1/2”
  - b. Set B – 2-3/4” x 16-3/8”
  - c. Set C – 2-3/4” x 6-1/2”
  - d. Set D – 2-3/4” x 4-3/8”
12. Cut (20) of each SET A, B, and C.
13. Cut (40) of Set D.



### Step 3 – Sewing Part 1

14. Sew (1) Fabric H 1-1/4” x 11-1/4” rectangle to the LONG edge of (1) Fabric A “TA” as shown in Example A – square off Fabric H to the “TA” (Fabric A).
15. Make (20), label “PART 1” and set aside for use later.

**Note: All of the following PARTS are sewn to PART 1.**



### Step 4 – Sewing Part 2

16. Sew (1) Set C to the LEFT 6-1/8” edge of (1) Fabric D “RA” rectangle keeping the BOTTOM edge even as shown in Example B.
17. Sew (1) Fabric C “TC” triangle to Set C at the SHORT edge keeping the LONG edge towards the LEFT – Make (20).
18. Sew (1) of Part 2 to Part 1 as shown in the FINISHED BLOCK – This will be the upper left of the Finished Block then square the LEFT SIDE.

### Step 5 – Sewing Part 3

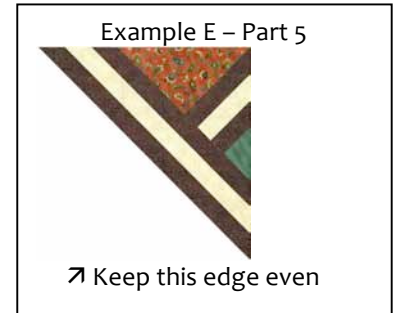
19. Sew (1) Fabric H  $1\frac{1}{4}$ " x  $11\frac{1}{4}$ " rectangle to the LONG edge of (1) Fabric B "TB" as shown in Example C – square off Fabric H to the "TB" (Fabric B).
20. Make (20) and set aside for use later.

### Step 6 – Sewing Part 4

21. Part 4 is sewn similar to Part 2 and is towards the bottom right of the finished block.
22. Sew (1) Set D to the LEFT 4" edge to (1) Fabric E "RB" rectangle – Make (20).
23. Sew (1) Fabric F "TD" triangle at the short edge with the LONG edge towards the bottom of Set D as shown in Example D.
24. Sew (1) Set B to the top keeping the upper right edge even – Refer to Example D – Make (20).
25. Sew (1) of Part 3 to the bottom right of Part 4 to finish the bottom right corner of the finished block – square off the bottom and right side to Part 4.
26. Sew the piece just completed to Part 1 as shown in the finished block which will leave the UPPER RIGHT corner open.

### Step 7 – Sewing Part 5

27. Sew (1) of Set D to (1) Fabric C "TC" at the left short edge with the large edge towards the top as shown in Example E – Make (20).
28. Sew (1) "TD" triangle at the short edge with the long edge towards the right to Set D – Make (20).
29. Sew (1) of Set A to the bottom of the piece just sewn centered then square at the UPPER Right Corner – Make (20) of Part 5.
30. Sew Part 5 to the upper right corner of Part 1 to finish the block. Square to  $15\frac{1}{2}$ ".



### Step 8 – Sewing the Quilt Top

31. Sew (4) blocks together to make a row at  $15\frac{1}{2}$ " x  $60\frac{1}{2}$ " – Make (5) rows. Keep in mind that the blocks rotate so refer to the cover picture as a guide.
32. Sew the rows together to finish the quilt center at  $60\frac{1}{2}$ " x  $75\frac{1}{2}$ ".
33. Sew Fabric F  $1\frac{1}{2}$ " strips together at the  $1\frac{1}{2}$ " then sub-cut into (2)  $1\frac{1}{2}$ " x  $62\frac{1}{2}$ " rectangles (top/bottom) and (2)  $1\frac{1}{2}$ " x  $75\frac{1}{2}$ " rectangles (sides). Sew the SIDES first then sew on the top and bottom to measure  $62\frac{1}{2}$ " x  $77\frac{1}{2}$ ".

Note: If you want to MITER the corners add 10" to each piece before cutting the rectangles.

34. Sew Fabric I  $4\frac{3}{4}$ " strips together at the  $4\frac{3}{4}$ " edge then sub-cut into (2)  $4\frac{3}{4}$ " x 71" rectangles (top/bottom) and (2)  $4\frac{3}{4}$ " x  $77\frac{1}{2}$ " (sides). Sew the SIDES first then sew on the top and bottom to finish the quilt top at 71" x 86"

### Step 6 – Finishing the Quilt

35. Layer the backing, batting, and quilt top and quilt as desired.
36. Using Fabric F  $2\frac{1}{2}$ " strips sew on the binding to finish the quilt.