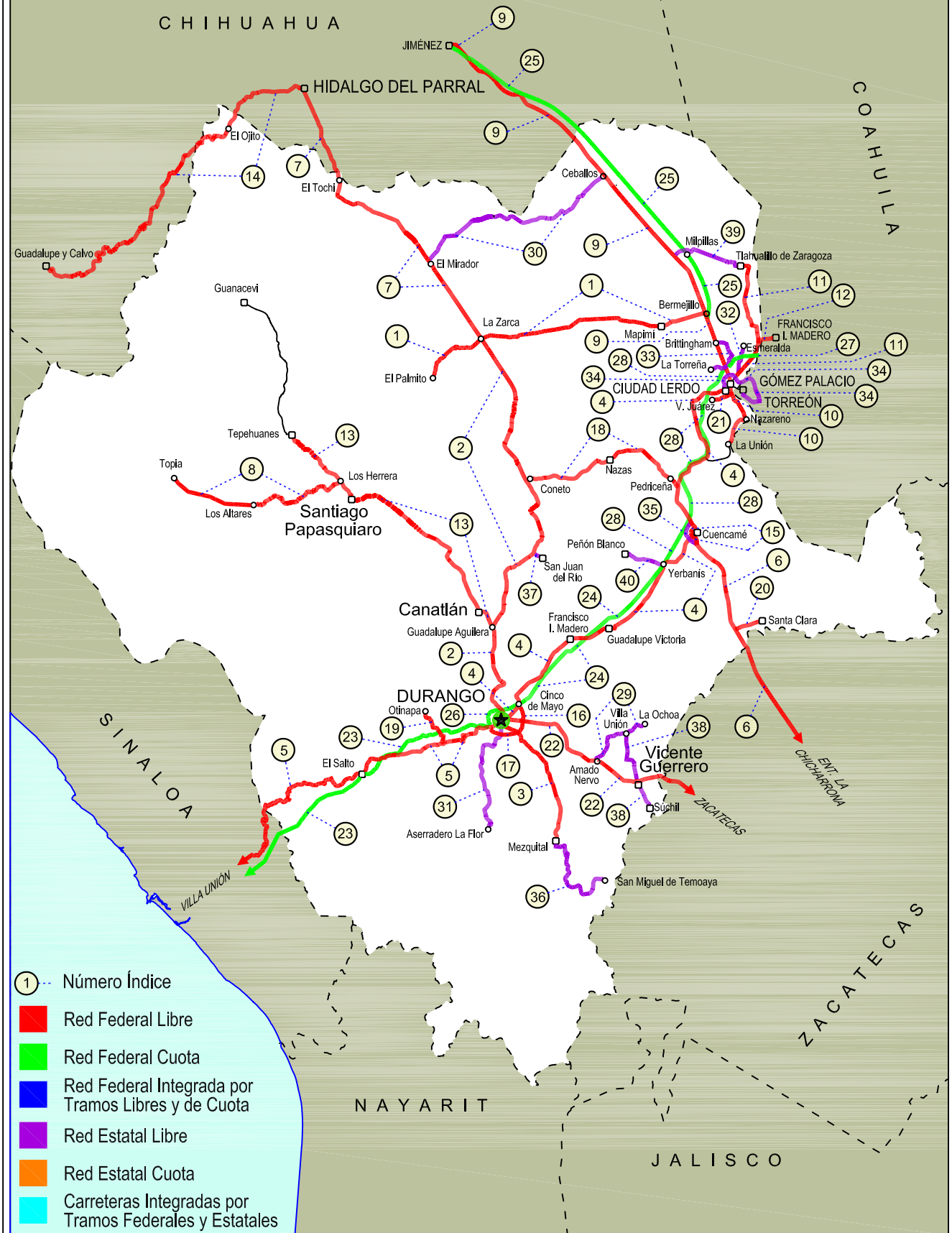
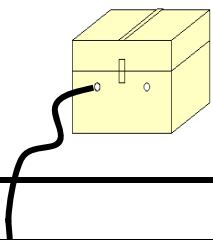


10 DURANGO

SECRETARÍA DE COMUNICACIONES Y TRANSPORTES
DIRECCIÓN GENERAL DE SERVICIOS TÉCNICOS





DURANGO

NO. INDICE	CARRETERA	RUTA
---RED FEDERAL LIBRE---		
1	Bermejillo - El Palmito	MEX-030
2	Durango - Ent. La Zarca	MEX-045
3	Durango - Mezquital	MEX-023
4	Durango - Torreón	MEX-040
5	Durango - Villa Unión	MEX-040
6	Ent. La Chicharrona - Cuencamé	MEX-049
7	Ent. La Zarca - Hidalgo del Parral	MEX-045
8	Ent. Los Herrera - Topia	MEX-036
9	Gómez Palacio - Jiménez	MEX-049
10	Gómez Palacio - La Unión	MEX-040
11	Gómez Palacio - Tlahualillo	MEX-040
12	Gregorio García - Francisco I. Madero	MEX-040
13	Guadalupe Aguilera - Tepehuanes	MEX-023
14	Hidalgo del Parral - Guadalupe y Calvo	MEX-024
15	Libramiento Cuencamé	MEX
16	Libramiento Oriente de Durango	MEX-045
17	Libramiento Sur de Durango	MEX-045
18	Pedriceña - Ent. Rodeo	MEX-034
19	Ramal a Otinapa	MEX
20	Ramal a Santa Clara	MEX-049
21	Ramal a Villa Juárez	MEX-040
22	Zacatecas - Durango	MEX-045
---RED FEDERAL DE CUOTA---		
23	Durango - Mazatlán (Cuota)	MEX-040D
24	Durango - Yerbanís (Cuota)	MEX-040D
25	Gómez Palacio - Corralitos (Cuota)	MEX-049D
26	Libramiento de Durango (Cuota)	MEX-040D
27	Libramiento Norte de Torreón (Cuota)	MEX-040D
28	Yerbanís - Gómez Palicio (Cuota)	MEX-040D
---RED ESTATAL LIBRE---		
29	Amado Nervo - La Ochoa	DGO-542
30	Ceballos - El Mirador	DGO-044
31	Durango - Aserradero La Flor	DGO-115
32	Jabonoso - Esmeralda	DGO-363
33	La Torreña - Brittingham	DGO-325
34	Libramiento de Torreón	COA
35	Libramiento Exterior Cuencamé	DGO
36	Mezquital - San Miguel de Temoaya	DGO
37	Ramal a San Juan del Río	DGO-290
38	Súchil - Villa Unión	DGO-241
39	Tlahualillo de Zaragoza - T.C. Gómez Palacio - Jiménez	DGO
40	Yerbanís - Peñón Blanco	DGO-316

DURANGO

1 CARR: Bermejillo - El Palmito

CLAVE: 10105

RUTA: MEX-030

AÑO: 2016

LUGAR	ESTACION				CLASIFICACION VEHICULAR EN PORCIENTO										COORDENADAS					
	KM	TE	SC	TDPA	M	A	B	C2	C3	T3S2	T3S3	T3S2R4	OTROS	A	B	C	K'	D	LATITUD	LONGITUD
Bermejillo	0.00	3	0	2093	1.3	75.9	2.0	12.5	2.6	4.2	0.9	0.3	0.3	77.2	2.0	20.8	0.076	0.501	25.892159	-103.632099
Santo Domingo	86.00	1	0	458	1.4	81.0	0.6	5.2	4.0	4.5	2.7	0.6	0.0	82.4	0.6	17.0	0.081	0.510	25.814984	-104.437604
Santo Domingo	86.00	3	0	377	0.4	67.6	2.3	14.1	5.7	5.6	3.4	0.9	0.0	68.0	2.3	29.7	0.093	0.513	25.813466	-104.448341
Ent. La Zarca	120.00	1	0	572	0.9	65.3	1.5	19.4	5.3	4.7	2.4	0.5	0.0	66.2	1.5	32.3	0.082	0.516	25.783783	-104.760433
Ent. La Zarca	120.00	3	0	219	0.5	76.8	1.1	16.3	4.5	0.5	0.0	0.3	0.0	77.3	1.1	21.6	0.123	0.514	25.781806	-104.765175
El Palmito	160.00	1	0	243	0.1	74.6	1.2	18.6	5.2	0.3	0.0	0.0	0.0	74.7	1.2	24.1	0.095	0.519	25.616460	-105.000445

2 CARR: Durango - Ent. La Zarca

CLAVE: 10016

RUTA: MEX-045

AÑO: 2016

LUGAR	ESTACION				CLASIFICACION VEHICULAR EN PORCIENTO										COORDENADAS					
	KM	TE	SC	TDPA	M	A	B	C2	C3	T3S2	T3S3	T3S2R4	OTROS	A	B	C	K'	D	LATITUD	LONGITUD
Durango	0.00	3	1	13687	1.9	89.6	0.5	3.4	1.4	1.0	1.5	0.3	0.4	91.5	0.5	8.0	0.070	0.540	24.039815	-104.657754
Durango	0.00	3	2	16069	0.7	90.1	0.6	3.8	1.5	1.1	1.5	0.3	0.4	90.8	0.6	8.6	0.069	0.540	24.039834	-104.657767
Caseta Fiscal Zona Industrial	5.30	1	1	9188	2.0	85.4	1.3	6.3	2.4	1.5	0.7	0.2	0.2	87.4	1.3	11.3	0.087	0.510	24.049224	-104.657899
Caseta Fiscal Zona Industrial	5.30	1	2	8819	1.7	84.4	1.4	6.9	2.9	1.6	0.7	0.2	0.2	86.1	1.4	12.5	0.092	0.510	24.049203	-104.657904
Caseta Fiscal Zona Industrial	5.30	3	1	8234	1.6	81.4	1.7	8.8	2.5	2.0	1.2	0.3	0.5	83.0	1.7	15.3	0.079	0.513	24.059703	-104.656288
Caseta Fiscal Zona Industrial	5.30	3	2	7802	1.8	79.1	1.8	10.3	2.8	2.1	1.3	0.3	0.5	80.9	1.8	17.3	0.087	0.513	24.059703	-104.656288
X. Periférico de Durango	6.20	3	1	6564	1.7	78.7	1.6	11.1	2.8	2.0	1.4	0.3	0.4	80.4	1.6	18.0	0.074	0.507	24.073792	-104.660277
X. Periférico de Durango	6.20	3	2	6379	1.7	76.6	1.8	12.4	2.9	2.4	1.5	0.3	0.4	78.3	1.8	19.9	0.079	0.507	24.073838	-104.660274
T. Der. San José del Molino	28.00	1	0	475	6.0	68.1	7.5	15.9	0.6	1.4	0.5	0.0	0.0	74.1	7.5	18.4	0.112	0.512	24.205893	-104.659934
T. Izq. Canatlán	55.25	1	0	5621	0.7	78.5	2.4	11.0	1.4	3.8	1.6	0.2	0.4	79.2	2.4	18.4	0.090	0.503	24.433398	-104.698901
T. Izq. Canatlán	55.25	3	0	2724	1.0	78.3	2.5	12.9	1.2	2.6	1.2	0.1	0.2	79.3	2.5	18.2	0.079	0.509	24.446063	-104.699130
T. Der. San Juan del Río	105.81	1	0	2349	1.1	84.4	2.2	6.4	0.9	3.3	1.3	0.1	0.3	85.5	2.2	12.3	0.076	0.508	24.791095	-104.505798
T. Der. San Juan del Río	105.81	3	0	2075	0.5	76.0	3.3	14.2	1.1	3.3	1.2	0.3	0.1	76.5	3.3	20.2	0.082	0.504	24.804012	-104.497607
T. Der. Nazas	155.50	3	0	2631	1.5	76.2	2.2	14.5	0.8	3.1	1.2	0.1	0.4	77.7	2.2	20.1	0.079	0.500	25.131201	-104.540742
T. Der. Rodeo	160.70	1	0	3605	1.2	77.4	1.4	14.8	0.6	3.4	0.8	0.1	0.3	78.6	1.4	20.0	0.087	0.505	25.162939	-104.552233
T. Izq. Abasolo	178.00	3	0	1184	2.0	71.6	3.8	14.7	0.7	4.5	2.1	0.3	0.3	73.6	3.8	22.6	0.089	0.505	25.310019	-104.639885
Ent. La Zarca	239.50	1	0	807	0.5	69.7	4.7	12.9	2.4	6.3	3.0	0.1	0.4	70.2	4.7	25.1	0.103	0.507	25.780792	-104.762000

3 CARR: Durango - Mezquital

CLAVE: 10423

RUTA: MEX-023

AÑO: 2016

LUGAR	ESTACION				CLASIFICACION VEHICULAR EN PORCIENTO										COORDENADAS					
	KM	TE	SC	TDPA	M	A	B	C2	C3	T3S2	T3S3	T3S2R4	OTROS	A	B	C	K'	D	LATITUD	LONGITUD
Durango	0.00	3	1	7113	3.2	84.9	0.9	6.9	2.5	0.8	0.6	0.1	0.1	88.1	0.9	11.0	0.093	0.504	23.994462	-104.632992
Durango	0.00	3	2	7236	3.2	83.8	0.9	7.7	2.6	1.0	0.6	0.1	0.1	87.0	0.9	12.1	0.078	0.504	23.994465	-104.632966

DURANGO

3 CARR: Durango - Mezquital

CLAVE: 10423

RUTA: MEX-023

AÑO: 2016

LUGAR	ESTACION				CLASIFICACION VEHICULAR EN PORCIENTO														COORDENADAS	
	KM	TE	SC	TDPA	M	A	B	C2	C3	T3S2	T3S3	T3S2R4	OTROS	A	B	C	K'	D	LATITUD	LONGITUD
Gabino Santillán	8.00	3	1	3197	3.5	81.2	0.6	10.2	2.0	1.1	0.9	0.2	0.3	84.7	0.6	14.7	0.103	0.505	23.980814	-104.592167
Gabino Santillán	8.00	3	2	3136	2.5	80.1	0.7	11.7	2.1	1.3	1.0	0.2	0.4	82.6	0.7	16.7	0.114	0.505	23.980804	-104.592158
T. Izq. Monte Morelos	13.00	3	0	4096	4.4	72.4	0.6	15.0	2.9	3.3	0.9	0.1	0.4	76.8	0.6	22.6	0.087	0.503	23.950841	-104.562209
Pino Suarez	24.20	3	0	1903	3.6	78.2	2.0	11.7	1.5	1.6	0.9	0.2	0.3	81.8	2.0	16.2	0.092	0.502	23.875255	-104.484261
Mezquital	82.00	1	1	962	5.1	80.1	0.3	12.3	0.9	0.9	0.3	0.0	0.1	85.2	0.3	14.5	0.102	0.538	23.485001	-104.385706
Mezquital	82.00	1	2	1119	4.9	79.3	0.3	13.8	0.9	0.5	0.2	0.0	0.1	84.2	0.3	15.5	0.097	0.538	23.484991	-104.385707

4 CARR: Durango - Torreón

CLAVE: 10085

RUTA: MEX-040

AÑO: 2016

LUGAR	ESTACION				CLASIFICACION VEHICULAR EN PORCIENTO														COORDENADAS	
	KM	TE	SC	TDPA	M	A	B	C2	C3	T3S2	T3S3	T3S2R4	OTROS	A	B	C	K'	D	LATITUD	LONGITUD
Durango	0.00	3	1	9051	1.8	77.3	2.4	10.5	1.4	2.7	2.1	0.9	0.9	79.1	2.4	18.5	0.063	0.503	24.076465	-104.591473
Durango	0.00	3	2	9169	1.7	75.8	2.7	11.4	1.6	2.7	2.2	1.0	0.9	77.5	2.7	19.8	0.063	0.503	24.076474	-104.591448
T. Der. Cd. de Los Niños	7.70	3	1	6542	0.9	84.8	1.8	7.4	1.0	1.9	1.4	0.4	0.4	85.7	1.8	12.5	0.087	0.506	24.082727	-104.585990
T. Der. Cd. de Los Niños	7.70	3	2	6396	1.4	82.6	2.2	8.4	1.1	2.0	1.5	0.4	0.4	84.0	2.2	13.8	0.078	0.506	24.082722	-104.585989
X. Periférico de Durango	9.00	1	1	7286	1.4	80.6	2.4	10.2	1.0	2.3	1.2	0.5	0.4	82.0	2.4	15.6	0.082	0.516	24.088698	-104.581012
X. Periférico de Durango	9.00	1	2	6825	1.5	79.0	2.7	10.9	1.1	2.5	1.4	0.5	0.4	80.5	2.7	16.8	0.076	0.516	24.088704	-104.581008
T. Der. Aeropuerto	9.42	1	1	6732	1.8	82.9	2.1	6.5	1.2	2.8	1.2	0.7	0.8	84.7	2.1	13.2	0.093	0.508	24.092683	-104.577360
T. Der. Aeropuerto	9.42	1	2	6510	2.0	81.1	2.2	7.6	1.2	2.9	1.3	0.8	0.9	83.1	2.2	14.7	0.094	0.508	24.092766	-104.577490
T. Der. Aeropuerto	9.42	3	1	4838	2.2	80.3	1.5	8.3	1.1	3.8	1.7	0.6	0.5	82.5	1.5	16.0	0.074	0.504	24.099466	-104.575837
T. Der. Aeropuerto	9.42	3	2	4754	2.3	79.0	1.8	8.6	1.3	3.9	2.0	0.6	0.5	81.3	1.8	16.9	0.075	0.504	24.099457	-104.575760
La Calera	10.85	3	0	6223	1.4	71.7	2.8	12.4	1.5	6.3	2.6	0.7	0.6	73.1	2.8	24.1	0.066	0.503	24.111230	-104.571805
Abraham González	27.10	3	0	4305	0.7	72.2	2.5	9.5	2.5	7.7	3.5	1.0	0.4	72.9	2.5	24.6	0.078	0.508	24.206211	-104.515527
Francisco I. Madero	56.30	1	0	4188	1.0	69.6	2.7	11.0	1.7	8.1	4.1	1.2	0.6	70.6	2.7	26.7	0.065	0.504	24.393041	-104.329964
Francisco I. Madero	56.30	3	0	4202	1.0	69.1	3.1	11.2	1.8	7.8	3.8	1.5	0.7	70.1	3.1	26.8	0.063	0.503	24.405162	-104.304985
Guadalupe Victoria	77.50	1	0	5198	0.8	69.3	2.7	13.2	1.3	7.6	3.2	1.4	0.5	70.1	2.7	27.2	0.072	0.502	24.446777	-104.139699
Guadalupe Victoria	77.50	3	0	6696	1.1	72.6	1.7	12.5	1.4	6.3	2.5	1.3	0.6	73.7	1.7	24.6	0.066	0.501	24.460138	-104.091146
T. Der. Ignacio Allende	90.13	1	0	4272	1.0	65.7	2.9	13.1	1.9	8.9	3.9	1.9	0.7	66.7	2.9	30.4	0.071	0.514	24.495221	-104.027806
T. Der. Ignacio Allende	90.13	3	0	3119	1.1	61.6	4.0	12.4	2.4	10.5	4.8	2.4	0.8	62.7	4.0	33.3	0.073	0.503	24.503127	-104.015332
T. Izq. Peñón Blanco	120.90	1	0	2231	1.0	50.4	5.3	14.5	3.2	14.9	6.6	3.1	1.0	51.4	5.3	43.3	0.066	0.514	24.732559	-103.843651
T. Izq. Peñón Blanco	120.90	3	0	2055	1.0	52.3	4.5	11.4	3.9	15.4	7.3	3.3	0.9	53.3	4.5	42.2	0.064	0.504	24.743297	-103.837444
Cuencamé	144.30	1	0	2070	1.0	52.0	4.5	11.3	3.8	15.6	7.4	3.5	0.9	53.0	4.5	42.5	0.062	0.514	24.861361	-103.701167
Cuencamé	144.30	3	0	7024	1.1	47.9	4.8	8.7	3.7	19.7	6.1	6.3	1.7	49.0	4.8	46.2	0.060	0.506	24.907489	-103.704348
T. Izq. Nazas	171.61	1	0	4595	0.6	48.8	3.4	10.3	3.7	21.8	7.1	3.4	0.9	49.4	3.4	47.2	0.057	0.503	25.086148	-103.771197
T. Izq. Nazas	171.61	3	0	5587	0.7	56.3	2.5	9.4	3.4	18.0	5.9	3.0	0.8	57.0	2.5	40.5	0.058	0.504	25.091297	-103.769950

DURANGO

4 CARR : Durango - Torreón

CLAVE: 10085

RUTA: MEX-040

AÑO : 2016

LUGAR	ESTACION				CLASIFICACION VEHICULAR EN PORCIENTO													COORDENADAS		
	KM	TE	SC	TDPA	M	A	B	C2	C3	T3S2	T3S3	T3S2R4	OTROS	A	B	C	K'	D	LATITUD	LONGITUD
T. Der. Villa Juárez	194.40	3	0	4019	0.9	42.8	4.0	11.0	4.4	24.2	8.0	3.9	0.8	43.7	4.0	52.3	0.055	0.512	25.225384	-103.629479
León Guzmán	229.58	3	0	8482	2.2	59.9	2.3	12.6	2.7	13.4	4.0	2.0	0.9	62.1	2.3	35.6	0.062	0.513	25.513205	-103.646055
Cd. Lerdo	244.80	1	1	6643	1.8	69.8	1.8	10.5	2.4	7.7	2.8	2.4	0.8	71.6	1.8	26.6	0.062	0.509	25.511847	-103.538794
Cd. Lerdo	244.80	1	2	6897	1.8	67.0	1.9	11.6	2.7	8.5	3.1	2.6	0.8	68.8	1.9	29.3	0.070	0.509	25.511794	-103.538807
T. Izq. Gómez Palacio	248.90	3	1	7226	3.8	85.2	0.7	7.2	1.3	0.6	0.5	0.6	0.1	89.0	0.7	10.3	0.068	0.528	25.554002	-103.481523
T. Izq. Gómez Palacio	248.90	3	2	8084	3.5	85.0	0.8	7.6	1.4	0.6	0.5	0.5	0.1	88.5	0.8	10.7	0.067	0.528	25.554007	-103.481528
Lim. Edos. Term. Dgo. Ppia. Coah.	251.00																			
Torreón	255.80	1	1	19533	2.4	89.0	0.7	4.7	0.1	0.7	2.1	0.0	0.3	91.4	0.7	7.9	0.062	0.519	25.547371	-103.470979
Torreón	255.80	1	2	21043	2.2	88.3	1.0	4.9	0.1	0.8	2.4	0.0	0.3	90.5	1.0	8.5	0.072	0.519	25.546450	-103.469497

5 CARR : Durango - Villa Unión

CLAVE: 0083

RUTA: MEX-040

AÑO : 2016

LUGAR	ESTACION				CLASIFICACION VEHICULAR EN PORCIENTO													COORDENADAS		
	KM	TE	SC	TDPA	M	A	B	C2	C3	T3S2	T3S3	T3S2R4	OTROS	A	B	C	K'	D	LATITUD	LONGITUD
Durango	0.00	3	0	3423	1.9	77.7	1.3	10.3	3.4	3.5	1.1	0.4	0.4	79.6	1.3	19.1	0.084	0.544	23.994117	-104.718117
T. Der. Pino	22.86	3	0	2001	1.7	68.7	2.2	9.5	5.3	8.0	3.9	0.2	0.5	70.4	2.2	27.4	0.113	0.502	23.967335	-104.820191
T. Izq. Estación Navios	58.42	3	0	2013	0.8	63.7	2.6	11.7	6.2	9.9	4.3	0.2	0.6	64.5	2.6	32.9	0.096	0.501	23.896759	-105.051205
Llano Grande	77.23	1	0	1922	1.5	64.0	2.3	11.9	5.9	9.4	4.4	0.1	0.5	65.5	2.3	32.2	0.100	0.504	23.869149	-105.192294
El Salto	99.76	3	0	2057	2.0	71.7	1.4	19.4	1.6	2.6	1.1	0.0	0.2	73.7	1.4	24.9	0.072	0.503	23.784372	-105.375938
La Ciudad	145.50	1	0	723	4.7	68.0	2.5	16.5	2.4	4.2	1.7	0.0	0.0	72.7	2.5	24.8	0.095	0.508	23.731562	-105.666995
La Ciudad	145.50	3	0	487	7.3	56.6	3.7	19.7	3.4	6.3	2.8	0.1	0.1	63.9	3.7	32.4	0.119	0.516	23.726541	-105.692935
Lim. Edos. Term. Dgo. Ppia. Sin.	198.50																			
T. C. Tepic - Mazatlán	294.40	1	0	3628	3.3	72.6	5.0	10.1	2.6	4.3	1.4	0.2	0.5	75.9	5.0	19.1	0.094	0.507	23.204513	-106.198438

6 CARR : Ent. La Chicharrona - Cuencamé

CLAVE: 00152

RUTA: MEX-049

AÑO : 2016

LUGAR	ESTACION				CLASIFICACION VEHICULAR EN PORCIENTO													COORDENADAS		
	KM	TE	SC	TDPA	M	A	B	C2	C3	T3S2	T3S3	T3S2R4	OTROS	A	B	C	K'	D	LATITUD	LONGITUD
Ent. La Chicharrona	0.00	3	1	4668	0.3	60.7	5.3	8.4	3.1	13.4	3.3	4.7	0.8	61.0	5.3	33.7	0.066	0.506	23.304963	-102.958931
Ent. La Chicharrona	0.00	3	2	4784	0.4	56.6	5.9	8.9	3.4	15.0	3.6	5.4	0.8	57.0	5.9	37.1	0.088	0.506	23.305053	-102.958703
T. Der. Cañitas de Felipe Pescador	25.86	1	1	3767	0.6	56.1	5.1	7.5	3.3	16.4	4.2	5.8	1.0	56.7	5.1	38.2	0.066	0.513	23.524279	-102.959737
T. Der. Cañitas de Felipe Pescador	25.86	1	2	3968	0.5	52.0	5.5	8.1	3.5	18.4	4.6	6.4	1.0	52.5	5.5	42.0	0.081	0.513	23.524083	-102.959528
Río Grande	60.00	1	0	5623	1.0	54.4	5.4	9.9	2.3	16.1	4.2	5.8	0.9	55.4	5.4	39.2	0.099	0.502	23.779194	-103.012750
Río Grande	60.00	3	0	7073	0.7	48.8	5.6	11.4	2.7	18.8	4.6	6.0	1.4	49.5	5.6	44.9	0.069	0.513	23.880722	-103.097047
T. Der. Nieves	78.00	3	0	5766	0.7	41.7	7.4	11.2	3.3	21.6	5.3	7.5	1.3	42.4	7.4	50.2	0.063	0.514	23.924630	-103.160574

DURANGO

6 CARR: Ent. La Chicharrona - Cuencamé

CLAVE: 00152

RUTA: MEX-049

AÑO: 2016

LUGAR	ESTACION				CLASIFICACION VEHICULAR EN PORCIENTO														COORDENADAS	
	KM	TE	SC	TDPA	M	A	B	C2	C3	T3S2	T3S3	T3S2R4	OTROS	A	B	C	K'	D	LATITUD	LONGITUD
X. C. Juan Aldama - Miguel Auza	124.50	1	0	6739	0.8	47.2	6.2	9.3	3.2	20.1	5.4	6.8	1.0	48.0	6.2	45.8	0.062	0.501	24.272374	-103.400214
X. C. Juan Aldama - Miguel Auza	124.50	3	0	6018	0.8	44.6	7.8	8.9	3.4	20.9	4.6	8.5	0.5	45.4	7.8	46.8	0.066	0.500	24.296582	-103.410276
Lim. Edos. Term. Zac. Ppia. Dgo.	134.30																			
T. Der. Santa Clara	144.00	1	0	4885	0.9	39.5	6.8	8.5	4.9	23.6	5.1	9.4	1.3	40.4	6.8	52.8	0.063	0.505	24.435557	-103.486002
T. Der. Santa Clara	144.00	3	0	4478	0.8	35.0	7.7	9.0	3.2	26.6	6.7	9.6	1.4	35.8	7.7	56.5	0.066	0.509	24.445114	-103.492277
Cuencamé	199.10	1	0	4841	1.3	46.0	6.6	8.2	3.5	20.1	4.5	7.8	2.0	47.3	6.6	46.1	0.060	0.500	24.852671	-103.693022

7 CARR: Ent. La Zarca - Hidalgo del Parral

CLAVE: 00488

RUTA: MEX-045

AÑO: 2016

LUGAR	ESTACION				CLASIFICACION VEHICULAR EN PORCIENTO														COORDENADAS	
	KM	TE	SC	TDPA	M	A	B	C2	C3	T3S2	T3S3	T3S2R4	OTROS	A	B	C	K'	D	LATITUD	LONGITUD
Ent. La Zarca	0.00	3	0	979	0.9	68.0	4.8	11.1	3.4	7.6	3.4	0.5	0.3	68.9	4.8	26.3	0.088	0.511	25.784635	-104.764860
T. Der. Ceballos	47.85	1	0	698	0.3	72.8	6.1	9.4	2.5	5.1	2.9	0.3	0.6	73.1	6.1	20.8	0.107	0.518	26.139807	-105.028681
T. Der. Ceballos	47.85	3	0	1422	1.5	68.9	3.9	14.8	2.0	4.3	2.9	1.7	0.0	70.4	3.9	25.7	0.076	0.501	26.144320	-105.032094
T. Izq. Canutillo	92.35	3	0	964	0.2	82.0	4.9	5.2	2.4	2.8	2.2	0.3	0.0	82.2	4.9	12.9	0.081	0.500	26.389452	-105.354712
Las Nieves	97.60	3	0	2290	0.6	76.5	2.7	12.7	1.4	3.5	1.7	0.4	0.5	77.1	2.7	20.2	0.079	0.519	26.400053	-105.405932
T. Izq. Ocampo	109.22	3	0	1511	0.2	72.2	4.3	14.0	2.2	4.1	2.7	0.1	0.2	72.4	4.3	23.3	0.068	0.533	26.447417	-105.495111
Lim. Edos. Term. Dgo. Ppia. Chih.	122.89																			
Matamoros	148.00	1	0	1300	0.3	69.3	3.9	18.4	1.8	3.8	2.3	0.1	0.1	69.6	3.9	26.5	0.100	0.503	26.750988	-105.581026
Hidalgo del Parral	171.00	1	0	3362	1.1	78.1	2.1	13.2	1.4	2.9	0.7	0.1	0.4	79.2	2.1	18.7	0.083	0.505	26.917806	-105.640528

8 CARR: Ent. Los Herrera - Topia

CLAVE: 10090

RUTA: MEX-036

AÑO: 2016

LUGAR	ESTACION				CLASIFICACION VEHICULAR EN PORCIENTO														COORDENADAS	
	KM	TE	SC	TDPA	M	A	B	C2	C3	T3S2	T3S3	T3S2R4	OTROS	A	B	C	K'	D	LATITUD	LONGITUD
T. C. Guadalupe Aguilera - Tepehuanes	0.00	3	0	684	0.9	53.9	1.8	25.6	6.8	6.7	3.9	0.0	0.4	54.8	1.8	43.4	0.088	0.512	25.121898	-105.481161
Los Altares	80.00	1	0	482	0.5	59.7	0.5	17.3	8.1	8.0	4.8	0.2	0.9	60.2	0.5	39.3	0.093	0.504	25.016277	-105.899169
Topia	229.00																			

9 CARR: Gómez Palacio - Jiménez

CLAVE: 00006

RUTA: MEX-049

AÑO: 2016

LUGAR	ESTACION				CLASIFICACION VEHICULAR EN PORCIENTO														COORDENADAS	
	KM	TE	SC	TDPA	M	A	B	C2	C3	T3S2	T3S3	T3S2R4	OTROS	A	B	C	K'	D	LATITUD	LONGITUD
Gómez Palacio	0.00	3	1	15048	4.1	71.2	2.5	8.2	2.7	6.3	1.8	2.9	0.3	75.3	2.5	22.2	0.076	0.503	25.615577	-103.514083
Gómez Palacio	0.00	3	2	14850	2.6	69.2	2.6	9.6	3.2	7.5	2.0	3.0	0.3	71.8	2.6	25.6	0.068	0.503	25.615572	-103.514086

DURANGO

9 CARR: Gómez Palacio - Jiménez

CLAVE: 00006

RUTA: MEX-049

AÑO: 2016

LUGAR	ESTACION				CLASIFICACION VEHICULAR EN PORCIENTO													COORDENADAS		
	KM	TE	SC	TDPA	M	A	B	C2	C3	T3S2	T3S3	T3S2R4	OTROS	A	B	C	K'	D	LATITUD	LONGITUD
X. C. La Torreña - Brittingham	10.96	1	1	9259	2.8	66.7	3.8	8.0	2.9	9.6	3.1	2.1	1.0	69.5	3.8	26.7	0.076	0.508	25.639220	-103.523558
X. C. La Torreña - Brittingham	10.96	1	2	9547	2.9	63.9	4.2	8.6	3.3	10.5	3.1	2.4	1.1	66.8	4.2	29.0	0.086	0.508	25.639249	-103.523563
T. Izq. Dinamita	26.27	1	1	6135	1.8	62.3	4.0	8.0	3.7	12.9	3.2	3.2	0.9	64.1	4.0	31.9	0.075	0.517	25.753739	-103.568959
T. Izq. Dinamita	26.27	1	2	5736	2.5	58.2	4.2	8.6	4.4	14.1	3.7	3.4	0.9	60.7	4.2	35.1	0.067	0.517	25.753739	-103.568959
Bermejillo	39.30	1	0	6861	1.4	63.3	3.0	8.7	2.5	14.9	3.4	1.8	1.0	64.7	3.0	32.3	0.063	0.501	25.874706	-103.616590
T. Izq. Ent. La Zarca	40.89	3	0	3302	0.8	41.7	3.3	10.8	3.8	28.5	6.6	3.3	1.2	42.5	3.3	54.2	0.057	0.505	25.903756	-103.628580
Yermo	107.95	1	0	2593	0.7	34.4	4.3	9.3	3.2	34.7	7.8	4.4	1.2	35.1	4.3	60.6	0.054	0.508	26.378083	-103.993805
Yermo	107.95	3	0	2837	0.5	32.1	3.6	9.6	3.0	38.1	7.4	4.6	1.1	32.6	3.6	63.8	0.051	0.510	26.395778	-104.010253
Ceballos	127.20	1	0	2700	1.1	39.8	5.2	8.3	4.6	27.2	7.7	4.7	1.4	40.9	5.2	53.9	0.054	0.511	26.517889	-104.121556
Ceballos	127.20	3	0	2529	1.2	34.6	4.0	13.2	4.2	30.4	7.2	4.1	1.1	35.8	4.0	60.2	0.065	0.510	26.536704	-104.139051
Lim. Edos. Term. Dgo. Ppia. Chih.	146.15																			
Estación Escalón	160.89	3	0	2146	1.2	30.7	5.0	8.9	4.3	34.8	8.2	5.7	1.2	31.9	5.0	63.1	0.051	0.514	26.756556	-104.341694
Jiménez	223.00	1	1	1218	0.3	41.0	6.6	6.4	4.1	29.7	7.6	3.5	0.8	41.3	6.6	52.1	0.059	0.504	27.117662	-104.890933
Jiménez	223.00	1	2	1196	0.6	37.4	7.2	6.6	4.7	30.2	8.6	3.8	0.9	38.0	7.2	54.8	0.064	0.504	27.117583	-104.890972

10 CARR: Gómez Palacio - La Unión

CLAVE: 10009

RUTA: MEX-040

AÑO: 2016

LUGAR	ESTACION				CLASIFICACION VEHICULAR EN PORCIENTO													COORDENADAS		
	KM	TE	SC	TDPA	M	A	B	C2	C3	T3S2	T3S3	T3S2R4	OTROS	A	B	C	K'	D	LATITUD	LONGITUD
Gómez Palacio	0.00	3	0	5724	4.9	81.3	0.7	6.5	1.2	3.8	0.6	0.3	0.7	86.2	0.7	13.1	0.075	0.520	25.536438	-103.500988
X. C. Torreón - Villa Juárez	4.30	3	0	5088	10.0	72.8	1.4	9.5	1.5	3.6	0.5	0.2	0.5	82.8	1.4	15.8	0.080	0.504	25.517350	-103.487079
Nazareno	20.90	1	0	2437	3.5	74.3	1.0	16.0	2.1	1.9	0.5	0.3	0.4	77.8	1.0	21.2	0.078	0.509	25.405472	-103.423660
Nazareno	20.90	3	0	2152	9.3	65.8	3.1	17.8	1.2	1.7	0.4	0.4	0.3	75.1	3.1	21.8	0.105	0.500	25.395816	-103.435505
La Unión	42.20	1	0	516	7.4	71.1	1.1	14.4	3.4	1.0	0.6	0.5	0.5	78.5	1.1	20.4	0.120	0.504	25.292514	-103.511153

11 CARR: Gómez Palacio - Tlahualillo

CLAVE: 10005

RUTA: MEX-040

AÑO: 2016

LUGAR	ESTACION				CLASIFICACION VEHICULAR EN PORCIENTO													COORDENADAS		
	KM	TE	SC	TDPA	M	A	B	C2	C3	T3S2	T3S3	T3S2R4	OTROS	A	B	C	K'	D	LATITUD	LONGITUD
T. C. Gómez Palacio - Jiménez	0.00																			
T. Izq. Esmeralda	5.60	1	0	13014	4.7	76.5	0.2	6.0	2.0	7.3	1.9	1.1	0.3	81.2	0.2	18.6	0.071	0.512	25.608908	-103.463336
T. Izq. Esmeralda	5.60	3	0	10437	4.6	74.6	0.4	8.5	2.4	7.0	1.3	0.9	0.3	79.2	0.4	20.4	0.076	0.523	25.613896	-103.457892
Gregorio García	26.00	3	0	6030	3.7	73.4	2.2	10.2	2.3	5.1	1.0	1.5	0.6	77.1	2.2	20.7	0.073	0.505	25.751592	-103.349861
T. Izq. Esmeralda	31.44	1	0	5963	4.3	77.6	0.9	7.6	1.8	4.8	1.1	1.2	0.7	81.9	0.9	17.2	0.087	0.519	25.757303	-103.352139
San Francisco	48.90	1	0	2608	7.5	65.3	1.2	16.3	5.3	3.4	0.6	0.3	0.1	72.8	1.2	26.0	0.073	0.503	25.928551	-103.416601

DURANGO

11 CARR: Gómez Palacio - Tlahualillo

CLAVE: 10005

RUTA: MEX-040

AÑO: 2016

LUGAR	ESTACION				CLASIFICACION VEHICULAR EN PORCIENTO														COORDENADAS	
	KM	TE	SC	TDPA	M	A	B	C2	C3	T3S2	T3S3	T3S2R4	OTROS	A	B	C	K'	D	LATITUD	LONGITUD
San Francisco	48.90	3	0	1882	6.8	63.4	1.5	15.3	8.8	2.8	0.9	0.4	0.1	70.2	1.5	28.3	0.080	0.501	25.943719	-103.420893
Tlahualillo	72.90	1	0	2363	5.4	74.1	2.5	13.2	1.8	2.0	0.4	0.1	0.5	79.5	2.5	18.0	0.082	0.501	26.109555	-103.423594

12 CARR: Gregorio García - Francisco I. Madero

CLAVE: 00110

RUTA: MEX-040

AÑO: 2016

LUGAR	ESTACION				CLASIFICACION VEHICULAR EN PORCIENTO														COORDENADAS		
	KM	TE	SC	TDPA	M	A	B	C2	C3	T3S2	T3S3	T3S2R4	OTROS	A	B	C	K'	D	LATITUD	LONGITUD	
T. C. Gómez Palacio - Tlahualillo	0.00																				
Lim. Edos. Term. Dgo. Ppia. Coah.	3.60																				
Francisco I. Madero	9.60	1	0	6482	3.3	78.6	2.2	8.0	1.8	3.8	1.1	0.5	0.7	81.9	2.2	15.9	0.079	0.541	25.772784	-103.287669	

13 CARR: Guadalupe Aguilera - Tepehuanes

CLAVE: 10220

RUTA: MEX-023

AÑO: 2016

LUGAR	ESTACION				CLASIFICACION VEHICULAR EN PORCIENTO														COORDENADAS	
	KM	TE	SC	TDPA	M	A	B	C2	C3	T3S2	T3S3	T3S2R4	OTROS	A	B	C	K'	D	LATITUD	LONGITUD
Guadalupe Aguilera	0.00	3	1	3041	1.8	76.3	1.7	16.3	0.9	1.4	1.3	0.1	0.2	78.1	1.7	20.2	0.091	0.501	24.464371	-104.713335
Guadalupe Aguilera	0.00	3	2	3022	1.8	73.4	1.9	18.6	1.1	1.6	1.3	0.1	0.2	75.2	1.9	22.9	0.095	0.501	24.464371	-104.713335
Canatlán	14.00	3	0	3083	0.9	74.1	3.0	13.4	1.5	3.4	2.9	0.5	0.3	75.0	3.0	22.0	0.085	0.501	24.539187	-104.776392
La Soledad	45.80	3	0	2682	0.8	75.3	2.9	12.6	1.5	3.5	2.7	0.3	0.4	76.1	2.9	21.0	0.095	0.507	24.762744	-104.925723
T. Der. Coneto de Comonfort	51.60	1	0	2752	0.8	72.6	3.2	15.3	1.5	3.5	2.6	0.2	0.3	73.4	3.2	23.4	0.076	0.508	24.802582	-104.924564
José María Morelos	90.20	1	0	2533	0.4	74.2	2.7	15.0	1.8	3.1	2.3	0.3	0.2	74.6	2.7	22.7	0.097	0.501	25.006927	-105.200882
Santiago Papasquiaro	117.00	3	0	4191	1.3	72.2	1.0	18.0	2.9	3.0	1.3	0.1	0.2	73.5	1.0	25.5	0.082	0.505	25.078138	-105.431170
Las Herreras	133.00	3	0	1304	0.8	68.3	2.6	18.8	4.4	3.2	1.2	0.2	0.5	69.1	2.6	28.3	0.094	0.513	25.159269	-105.508652
Tepehuanes	169.00	1	0	1384	0.7	73.0	2.1	16.2	3.9	2.5	1.1	0.0	0.5	73.7	2.1	24.2	0.098	0.500	25.321793	-105.714097

14 CARR: Hidalgo del Parral - Guadalupe y Calvo

CLAVE: 00802

RUTA: MEX-024

AÑO: 2016

LUGAR	ESTACION				CLASIFICACION VEHICULAR EN PORCIENTO														COORDENADAS	
	KM	TE	SC	TDPA	M	A	B	C2	C3	T3S2	T3S3	T3S2R4	OTROS	A	B	C	K'	D	LATITUD	LONGITUD
T. C. Hidalgo del Parral - Santa Bárbara	0.00	3	0	2877	0.9	71.0	1.1	15.4	4.2	3.9	2.3	0.3	0.9	71.9	1.1	27.0	0.077	0.504	26.915833	-105.766556
T. Der. Guacho chic	35.00	1	0	862	0.1	63.6	1.4	18.3	7.0	4.8	3.7	0.1	1.0	63.7	1.4	34.9	0.085	0.517	26.815968	-106.014985
T. Der. Guacho chic	35.00	3	0	890	1.6	61.1	2.3	16.0	8.9	6.3	2.7	0.1	1.0	62.7	2.3	35.0	0.091	0.507	26.807978	-106.016768
Lim. Edos. Term. Chih. Ppia. Dgo	38.00																			
Lim. Edos. Term. Dgo. Ppia. Chih.	57.00																			
El Vergel	110.00	1	0	1003	0.1	57.4	1.5	21.7	9.9	6.0	2.4	0.0	1.0	57.5	1.5	41.0	0.086	0.504	26.497589	-106.363243

DURANGO

14 CARR: Hidalgo del Parral - Guadalupe y Calvo

CLAVE: 00802

RUTA: MEX-024

AÑO: 2016

LUGAR	ESTACION				CLASIFICACION VEHICULAR EN PORCIENTO														COORDENADAS	
	KM	TE	SC	TDPA	M	A	B	C2	C3	T3S2	T3S3	T3S2R4	OTROS	A	B	C	K'	D	LATITUD	LONGITUD
Puerto Sabinal	212.00	1	0	558	0.4	67.8	0.7	15.4	8.9	3.7	1.9	0.1	1.1	68.2	0.7	31.1	0.091	0.504	26.068611	-106.778778
Guadalupe y Calvo	234.00																			

15 CARR: Libramiento Cuencamé

CLAVE: 10006

RUTA: MEX

AÑO: 2016

LUGAR	ESTACION				CLASIFICACION VEHICULAR EN PORCIENTO														COORDENADAS	
	KM	TE	SC	TDPA	M	A	B	C2	C3	T3S2	T3S3	T3S2R4	OTROS	A	B	C	K'	D	LATITUD	LONGITUD
T. C. La Chicharrona - Cuencamé	0.00	3	1	1191	2.4	69.2	4.6	14.2	2.5	4.7	1.6	0.6	0.2	71.6	4.6	23.8	0.105	0.530	24.863952	-103.699829
T. C. La Chicharrona - Cuencamé	0.00	3	2	1343	3.0	66.4	5.0	15.4	2.6	5.4	1.6	0.5	0.1	69.4	5.0	25.6	0.085	0.530	24.863954	-103.699828
T. C. Durango - Torreón	2.60	1	1	927	1.9	75.3	3.5	9.0	2.9	4.3	1.6	1.1	0.4	77.2	3.5	19.3	0.078	0.508	24.880373	-103.700841
T. C. Durango - Torreón	2.60	1	2	959	1.9	72.9	3.7	9.5	3.3	5.0	2.0	1.2	0.5	74.8	3.7	21.5	0.094	0.508	24.880374	-103.700838

16 CARR: Libramiento Oriente de Durango

CLAVE:

RUTA: MEX-045

AÑO: 2016

LUGAR	ESTACION				CLASIFICACION VEHICULAR EN PORCIENTO														COORDENADAS	
	KM	TE	SC	TDPA	M	A	B	C2	C3	T3S2	T3S3	T3S2R4	OTROS	A	B	C	K'	D	LATITUD	LONGITUD
T. C. Zacatecas - Durango	0.00	3	1	2368	2.3	77.2	1.6	6.0	2.9	4.7	3.0	2.0	0.3	79.5	1.6	18.9	0.075	0.508	24.024100	-104.519157
T. C. Zacatecas - Durango	0.00	3	2	2448	1.6	75.5	2.0	6.4	3.2	5.4	3.4	2.1	0.4	77.1	2.0	20.9	0.073	0.508	24.024100	-104.519157
T. C. Durango - Ent. La Zarca	10.50	1	1	2660	1.7	79.2	1.5	8.7	2.2	3.0	2.1	1.2	0.4	80.9	1.5	17.6	0.088	0.514	24.091571	-104.570765
T. C. Durango - Ent. La Zarca	10.50	1	2	2513	1.9	76.6	1.7	9.7	2.5	3.2	2.3	1.5	0.6	78.5	1.7	19.8	0.084	0.514	24.091569	-104.570763

17 CARR: Libramiento Sur de Durango

CLAVE:

RUTA: MEX-045

AÑO: 2016

LUGAR	ESTACION				CLASIFICACION VEHICULAR EN PORCIENTO														COORDENADAS	
	KM	TE	SC	TDPA	M	A	B	C2	C3	T3S2	T3S3	T3S2R4	OTROS	A	B	C	K'	D	LATITUD	LONGITUD
T. C. Zacatecas - Durango	0.00	3	0	2324	2.9	78.2	1.5	4.8	3.0	4.9	2.3	1.8	0.6	81.1	1.5	17.4	0.094	0.549	24.008512	-104.528640
T. C. Durango - Mezquital	8.45	1	0	2237	2.3	78.7	1.4	6.1	3.0	4.5	2.3	1.4	0.3	81.0	1.4	17.6	0.102	0.512	23.969059	-104.574162
T. C. Durango - Mezquital	8.45	3	0	1116	5.3	78.8	1.3	2.9	4.6	3.0	1.9	2.1	0.1	84.1	1.3	14.6	0.098	0.520	23.966910	-104.577024
T. C. Durango - Aserradero La Flor	19.50	1	0	819	6.8	67.3	3.3	8.0	4.9	3.9	2.6	3.1	0.1	74.1	3.3	22.6	0.104	0.517	23.952701	-104.661464
T. C. Durango - Aserradero La Flor	19.50	3	0	1031	6.2	73.4	2.9	5.5	3.9	3.7	1.7	2.4	0.3	79.6	2.9	17.5	0.094	0.522	23.952745	-104.670717
T. C. Durango - Villa Unión	27.70	1	0	1340	2.4	82.3	1.4	2.5	4.5	3.4	1.4	1.9	0.2	84.7	1.4	13.9	0.134	0.503	23.990136	-104.719056

DURANGO

18 CARR: Pedriceña - Ent. Rodeo

CLAVE: 10002

RUTA: MEX-034

AÑO: 2016

LUGAR	ESTACION				CLASIFICACION VEHICULAR EN PORCIENTO										COORDENADAS					
	KM	TE	SC	TDPA	M	A	B	C2	C3	T3S2	T3S3	T3S2R4	OTROS	A	B	C	K'	D	LATITUD	LONGITUD
T. C. Cuencamé - Torreón	0.00	3	0	2874	1.0	74.3	1.2	17.7	1.6	2.8	1.0	0.1	0.3	75.3	1.2	23.5	0.067	0.501	25.090971	-103.772579
Nazas	45.00	1	0	2229	2.5	82.3	0.4	11.6	1.0	1.4	0.6	0.0	0.2	84.8	0.4	14.8	0.079	0.505	25.236014	-104.099485
Nazas	45.00	3	0	852	4.7	75.0	0.5	16.7	0.9	1.0	1.0	0.0	0.2	79.7	0.5	19.8	0.083	0.515	25.217527	-104.125607
T. C. (Durango - Ent. La Zarca)-Ent. Rodeo	98.00	1	0	649	2.1	79.2	0.6	14.4	0.9	1.5	1.2	0.0	0.1	81.3	0.6	18.1	0.085	0.509	25.129477	-104.536706

19 CARR: Ramal a Otinapa

CLAVE: 10002

RUTA: MEX

AÑO: 2016

LUGAR	ESTACION				CLASIFICACION VEHICULAR EN PORCIENTO										COORDENADAS						
	KM	TE	SC	TDPA	M	A	B	C2	C3	T3S2	T3S3	T3S2R4	OTROS	A	B	C	K'	D	LATITUD	LONGITUD	
T. C. Durango - Villa Unión	0.00	3	0	215	1.1	80.9	0.7	10.1	3.2	2.9	1.0	0.0	0.1	82.0	0.7	17.3	0.130	0.528	23.927543	-104.940859	
Otinapa	19.65																				

20 CARR: Ramal a Santa Clara

CLAVE: 10287

RUTA: MEX-049

AÑO: 2016

LUGAR	ESTACION				CLASIFICACION VEHICULAR EN PORCIENTO										COORDENADAS						
	KM	TE	SC	TDPA	M	A	B	C2	C3	T3S2	T3S3	T3S2R4	OTROS	A	B	C	K'	D	LATITUD	LONGITUD	
T. C. Ent. La Chicharrona - Cuencamé	0.00	3	0	838	1.5	74.6	1.6	21.0	0.4	0.6	0.3	0.0	0.0	76.1	1.6	22.3	0.091	0.564	24.440261	-103.486529	
Santa Clara	14.00																				

21 CARR: Ramal a Villa Juárez

CLAVE: 10287

RUTA: MEX-040

AÑO: 2016

LUGAR	ESTACION				CLASIFICACION VEHICULAR EN PORCIENTO										COORDENADAS						
	KM	TE	SC	TDPA	M	A	B	C2	C3	T3S2	T3S3	T3S2R4	OTROS	A	B	C	K'	D	LATITUD	LONGITUD	
T. C. Gómez Palacio - La Unión	0.00	3	1	2137	6.4	80.3	2.5	9.4	0.7	0.6	0.1	0.0	0.0	86.7	2.5	10.8	0.116	0.513	25.517622	-103.494621	
T. C. Gómez Palacio - La Unión	0.00	3	2	2251	7.6	77.7	2.8	10.5	0.6	0.6	0.2	0.0	0.0	85.3	2.8	11.9	0.118	0.513	25.517627	-103.494623	
Villa Juárez	13.00																				

22 CARR: Zacatecas - Durango

CLAVE: 00544

RUTA: MEX-045

AÑO: 2016

LUGAR	ESTACION				CLASIFICACION VEHICULAR EN PORCIENTO										COORDENADAS						
	KM	TE	SC	TDPA	M	A	B	C2	C3	T3S2	T3S3	T3S2R4	OTROS	A	B	C	K'	D	LATITUD	LONGITUD	
Zacatecas	0.00																				
T. Izq. Guadalajara	6.40	3	1	12621	0.6	81.9	2.1	6.0	1.9	3.8	1.7	1.2	0.8	82.5	2.1	15.4	0.082	0.500	22.783593	-102.626936	
T. Izq. Guadalajara	6.40	3	2	12639	0.6	80.2	2.4	6.5	2.0	4.2	1.9	1.3	0.9	80.8	2.4	16.8	0.089	0.500	22.783607	-102.627018	
T. Der. Saltillo (T. Morelos)	15.00	3	1	11313	1.1	74.5	3.4	6.9	2.0	6.0	2.3	2.9	0.9	75.6	3.4	21.0	0.081	0.508	22.872900	-102.634845	

DURANGO

22 CARR: Zacatecas - Durango

CLAVE: 00544

RUTA: MEX-045

AÑO: 2016

LUGAR	ESTACION				CLASIFICACION VEHICULAR EN PORCIENTO													COORDENADAS		
	KM	TE	SC	TDPA	M	A	B	C2	C3	T3S2	T3S3	T3S2R4	OTROS	A	B	C	K'	D	LATITUD	LONGITUD
T. Der. Saltillo (T. Morelos)	15.00	3	2	11694	0.8	73.2	3.4	7.7	2.2	6.2	2.4	3.1	1.0	74.0	3.4	22.6	0.085	0.508	22.865722	-102.650000
Víctor Rosales	28.00	1	1	11217	1.5	74.2	3.1	7.3	2.3	6.0	2.2	3.0	0.4	75.7	3.1	21.2	0.083	0.510	22.930006	-102.685455
Víctor Rosales	28.00	1	2	11666	1.3	72.8	3.5	7.4	2.5	6.7	2.4	3.0	0.4	74.1	3.5	22.4	0.083	0.510	22.929886	-102.685718
T. Der. Facultad de Veterinaria	32.30	1	1	7212	0.9	68.3	5.0	9.9	2.4	7.6	2.4	2.6	0.9	69.2	5.0	25.8	0.086	0.502	22.970766	-102.719259
T. Der. Facultad de Veterinaria	32.30	1	2	7146	1.5	64.0	5.6	11.0	2.6	8.8	2.8	2.7	1.0	65.5	5.6	28.9	0.092	0.502	22.970762	-102.719115
Gral. Enrique Estrada	34.60	3	1	8892	0.8	79.2	3.0	6.5	1.7	4.9	1.9	1.6	0.4	80.0	3.0	17.0	0.082	0.505	23.012521	-102.751882
Gral. Enrique Estrada	34.60	3	2	9066	0.5	84.1	2.5	5.1	1.0	3.9	1.5	1.1	0.3	84.6	2.5	12.9	0.082	0.505	23.012324	-102.752088
Fresnillo	58.50	1	1	7331	1.2	81.4	2.8	7.8	2.1	2.5	1.2	0.5	0.5	82.6	2.8	14.6	0.099	0.501	23.159358	-102.851867
Fresnillo	58.50	1	2	7292	1.4	78.7	3.1	9.3	2.2	2.9	1.4	0.5	0.5	80.1	3.1	16.8	0.090	0.501	23.159390	-102.851772
Ent. La Chicharrona	74.30	1	1	7832	0.6	66.6	4.2	8.7	3.1	9.8	3.2	3.3	0.5	67.2	4.2	28.6	0.073	0.515	23.291807	-102.953735
Ent. La Chicharrona	74.30	1	2	7376	0.6	63.9	4.5	10.0	3.2	10.2	3.5	3.6	0.5	64.5	4.5	31.0	0.079	0.515	23.291575	-102.953917
Ent. La Chicharrona	74.30	3	0	6642	0.6	69.3	4.3	13.9	2.6	4.8	2.6	1.4	0.5	69.9	4.3	25.8	0.071	0.500	23.307414	-102.964414
T. Der. Sain Alto	121.00	3	0	4111	0.6	70.9	4.6	11.9	2.6	5.4	2.0	1.2	0.8	71.5	4.6	23.9	0.080	0.514	23.581671	-103.274319
T. Izq. Sombrerete (2º Acceso)	161.50	3	0	5886	1.7	72.1	3.3	12.3	1.8	5.2	1.8	1.1	0.7	73.8	3.3	22.9	0.078	0.501	23.647325	-103.651690
Lim. Edos. Term. Zac. Ppia. Dgo.	190.08																			
X. C. Súchil - Villa Unión	206.98	1	0	3213	1.0	64.0	6.7	12.3	2.4	6.8	3.5	2.6	0.7	65.0	6.7	28.3	0.077	0.505	23.749931	-103.963812
X. C. Súchil - Villa Unión	206.98	3	0	5649	1.9	71.9	4.1	10.8	1.7	5.1	2.4	1.4	0.7	73.8	4.1	22.1	0.072	0.506	23.744151	-104.000752
T. Izq. Graceros	210.00	1	0	5130	0.9	73.6	4.4	10.6	1.5	4.6	2.4	1.4	0.6	74.5	4.4	21.1	0.074	0.505	23.747033	-104.021605
Amado Nervo	231.51	1	0	4277	1.0	70.9	5.9	10.6	1.8	5.0	2.4	1.8	0.6	71.9	5.9	22.2	0.076	0.505	23.839333	-104.180545
Amado Nervo	231.51	3	0	5843	0.9	72.9	5.7	10.0	1.8	4.4	2.3	1.5	0.5	73.8	5.7	20.5	0.075	0.501	23.844225	-104.194748
Nombre de Dios	236.80	1	0	4894	1.5	76.6	3.6	8.2	1.6	4.9	2.0	1.2	0.4	78.1	3.6	18.3	0.079	0.527	23.843803	-104.223426
Nombre de Dios	236.80	3	0	5369	1.1	75.2	3.1	9.4	1.3	4.6	3.3	1.4	0.6	76.3	3.1	20.6	0.075	0.501	23.855312	-104.252979
T. Der. Constanacia	240.60	3	0	5513	0.5	74.0	4.2	10.7	1.7	4.9	2.1	1.5	0.4	74.5	4.2	21.3	0.082	0.503	23.871673	-104.266986
T. Der. Tuitán	250.80	3	0	4792	0.4	76.7	3.6	8.8	1.7	4.6	2.1	1.3	0.8	77.1	3.6	19.3	0.089	0.514	23.922980	-104.337253
T. Der. Independencia y Libertad	261.70	1	0	5826	0.4	76.6	3.7	8.8	1.6	4.6	2.2	1.4	0.7	77.0	3.7	19.3	0.087	0.507	23.993880	-104.374263
T. Der. Independencia y Libertad	261.70	3	1	3062	0.5	76.9	3.7	11.3	1.3	3.0	1.7	1.2	0.4	77.4	3.7	18.9	0.137	0.500	24.012333	-104.398489
T. Der. Independencia y Libertad	261.70	3	2	3063	0.5	74.8	3.9	12.5	1.4	3.3	2.0	1.2	0.4	75.3	3.9	20.8	0.102	0.500	24.012343	-104.398491
T. Izq. Parras de La Fuente	276.60	1	1	4154	1.0	76.4	3.8	11.9	1.3	2.8	1.5	1.0	0.3	77.4	3.8	18.8	0.104	0.502	24.019178	-104.508440
T. Izq. Parras de La Fuente	276.60	1	2	4124	0.8	73.9	4.3	13.6	1.3	3.1	1.7	1.0	0.3	74.7	4.3	21.0	0.087	0.502	24.019175	-104.508442
T. Izq. Parras de La Fuente	276.60	3	1	3925	0.9	83.5	2.2	9.0	1.4	1.8	0.6	0.4	0.2	84.4	2.2	13.4	0.094	0.505	24.021187	-104.526727
T. Izq. Parras de La Fuente	276.60	3	2	3856	1.5	81.8	2.6	9.3	1.4	2.1	0.7	0.4	0.2	83.3	2.6	14.1	0.089	0.505	24.021191	-104.526723
Durango	287.30	1	1	4976	2.2	83.6	1.5	9.5	0.9	1.4	0.5	0.2	0.2	85.8	1.5	12.7	0.106	0.505	24.026266	-104.574033
Durango	287.30	1	2	4884	2.3	82.2	1.7	10.2	1.1	1.6	0.5	0.2	0.2	84.5	1.7	13.8	0.101	0.505	24.026266	-104.574033

DURANGO

23 CARR: Durango - Mazatlán (Cuota)

CLAVE: 00084

RUTA: MEX-040D

AÑO: 2016

LUGAR	ESTACION				CLASIFICACION VEHICULAR EN PORCIENTO													COORDENADAS		
	KM	TE	SC	TDPA	M	A	B	C2	C3	T3S2	T3S3	T3S2R4	OTROS	A	B	C	K'	D	LATITUD	LONGITUD
Libramiento de Durango	20.50	3	0	2610	0.9	65.0	4.3	11.2	2.1	9.2	2.0	4.7	0.6	65.9	4.3	29.8	0.103	0.543	24.005722	-104.732310
Caseta de Cobro Durango	22.20	2	0	2915	0.9	72.9	4.0	2.5	2.7	9.0	1.4	5.9	0.7	73.8	4.0	22.2	0.108	0.500	24.005150	-104.734489
Ent. Otinapa	44.50	1	0	2273	4.9	65.3	3.8	8.1	2.4	8.3	2.9	3.3	1.0	70.2	3.8	26.0	0.103	0.517	23.982272	-104.940522
Caseta de Cobro Llano Grande	78.10	2	0	2621	0.9	69.5	5.1	2.5	3.2	10.0	1.5	6.5	0.8	70.4	5.1	24.5	0.108	0.500	23.868855	-105.205734
Lim. Edos. Term. Dgo. Ppia. Sin.	157.40																			
Concordia	188.35	3	0	2009	2.0	58.4	5.1	9.7	2.4	12.2	2.5	6.9	0.8	60.4	5.1	34.5	0.110	0.548	23.251654	-106.058725
Villa Unión	208.35	1	0	1844	2.0	58.6	5.2	8.8	2.6	12.5	2.7	6.9	0.7	60.6	5.2	34.2	0.109	0.506	23.197350	-106.172342

24 CARR: Durango - Yerbanís (Cuota)

CLAVE: 10003

RUTA: MEX-040D

AÑO: 2016

LUGAR	ESTACION				CLASIFICACION VEHICULAR EN PORCIENTO													COORDENADAS		
	KM	TE	SC	TDPA	M	A	B	C2	C3	T3S2	T3S3	T3S2R4	OTROS	A	B	C	K'	D	LATITUD	LONGITUD
T. C. Durango - Torreón	0.00																			
T. Der. Aeropuerto	5.30	1	1	4064	0.8	79.6	2.7	9.3	1.7	3.0	1.2	1.4	0.3	80.4	2.7	16.9	0.084	0.516	24.124124	-104.540338
T. Der. Aeropuerto	5.30	1	2	4338	0.9	77.7	2.8	10.3	1.8	3.4	1.3	1.5	0.3	78.6	2.8	18.6	0.104	0.516	24.124121	-104.540366
Caseta de Cobro Durango	5.50	2	1	1372	0.4	71.2	6.3	3.9	2.2	8.8	1.7	4.8	0.7	71.6	6.3	22.1	0.117	0.500	24.131744	-104.534065
Caseta de Cobro Durango	5.50	2	2	1372	0.4	71.2	6.3	3.9	2.2	8.8	1.7	4.8	0.7	71.6	6.3	22.1	0.117	0.500	24.131744	-104.534065
Caseta de Cobro Yerbanís	112.19	2	1	1136	0.5	67.9	7.0	4.0	2.3	10.1	1.9	5.6	0.7	68.4	7.0	24.6	0.117	0.500	24.730280	-103.862549
Caseta de Cobro Yerbanís	112.19	2	2	1136	0.5	67.9	7.0	4.0	2.3	10.1	1.9	5.6	0.7	68.4	7.0	24.6	0.117	0.500	24.730280	-103.862549
Ent. Yerbanís	118.00																			

25 CARR: Gómez Palacio - Corralitos (Cuota)

CLAVE: 00016

RUTA: MEX-049D

AÑO: 2016

LUGAR	ESTACION				CLASIFICACION VEHICULAR EN PORCIENTO													COORDENADAS		
	KM	TE	SC	TDPA	M	A	B	C2	C3	T3S2	T3S3	T3S2R4	OTROS	A	B	C	K'	D	LATITUD	LONGITUD
T. C. Gómez Palacio - Jiménez (Libre)	0.00																			
Caseta de Cobro Bermejillo	5.00	2	1	1698	0.2	41.5	7.6	7.3	1.8	24.6	5.3	9.7	2.0	41.7	7.6	50.7	0.079	0.500	25.923655	-103.622040
Caseta de Cobro Bermejillo	5.00	2	2	1698	0.2	41.5	7.6	7.3	1.8	24.6	5.3	9.7	2.0	41.7	7.6	50.7	0.079	0.500	25.923655	-103.622040
T. Izq. Bermejillo	38.20	1	1	1740	0.6	44.0	8.4	6.6	2.3	22.5	5.3	9.0	1.3	44.6	8.4	47.0	0.070	0.505	25.883254	-103.610758
T. Izq. Bermejillo	38.20	1	2	1771	0.6	37.2	9.0	7.4	2.5	25.8	6.1	10.1	1.3	37.8	9.0	53.2	0.065	0.505	25.883267	-103.610788
T. Izq. Bermejillo	38.20	3	1	1665	2.5	41.0	8.9	8.1	2.4	22.0	5.4	8.4	1.3	43.5	8.9	47.6	0.067	0.504	25.895335	-103.611236
T. Izq. Bermejillo	38.20	3	2	1638	0.7	41.3	8.4	8.4	2.3	23.6	6.0	8.1	1.2	42.0	8.4	49.6	0.073	0.504	25.895336	-103.611245
Caseta de Cobro Ceballos	89.00	2	1	1683	0.2	40.4	7.6	7.5	1.8	25.3	5.4	9.8	2.0	40.6	7.6	51.8	0.079	0.500	26.586790	-104.057602
Caseta de Cobro Ceballos	89.00	2	2	1683	0.2	40.4	7.6	7.5	1.8	25.3	5.4	9.8	2.0	40.6	7.6	51.8	0.079	0.500	26.586790	-104.057602
Lim. Edos. Term. Dgo. Ppia. Chih.	112.00																			

DURANGO

25 CARR: Gómez Palacio - Corralitos (Cuota)

CLAVE: 00016

RUTA: MEX-049D

AÑO: 2016

LUGAR	ESTACION				CLASIFICACION VEHICULAR EN PORCIENTO														COORDENADAS	
	KM	TE	SC	TDPA	M	A	B	C2	C3	T3S2	T3S3	T3S2R4	OTROS	A	B	C	K'	D	LATITUD	LONGITUD
T. C. Gómez Palacio - Jiménez (Libre)	194.00	1	1	1704	0.5	41.9	8.7	8.7	2.3	23.5	5.2	7.9	1.3	42.4	8.7	48.9	0.086	0.537	27.088056	-104.849500
T. C. Gómez Palacio - Jiménez (Libre)	194.00	1	2	1979	1.0	37.1	9.3	8.8	2.4	25.7	5.7	8.5	1.5	38.1	9.3	52.6	0.070	0.537	27.087783	-104.849694

26 CARR: Libramiento de Durango (Cuota)

CLAVE: 10006

RUTA: MEX-040D

AÑO: 2016

LUGAR	ESTACION				CLASIFICACION VEHICULAR EN PORCIENTO														COORDENADAS	
	KM	TE	SC	TDPA	M	A	B	C2	C3	T3S2	T3S3	T3S2R4	OTROS	A	B	C	K'	D	LATITUD	LONGITUD
T. C. Durango - Torreón	0.00	3	0	4157	1.1	66.0	3.9	7.8	4.5	9.3	3.5	3.1	0.8	67.1	3.9	29.0	0.071	0.501	24.093099	-104.585069
T. C. Durango - Villa Unión (Cuota)	21.60	1	0	2971	1.5	58.3	4.1	11.2	4.6	11.9	3.6	3.9	0.9	59.8	4.1	36.1	0.104	0.562	24.018468	-104.726989

27 CARR: Libramiento Norte de Torreón (Cuota)

CLAVE:

RUTA: MEX-040D

AÑO: 2016

LUGAR	ESTACION				CLASIFICACION VEHICULAR EN PORCIENTO														COORDENADAS	
	KM	TE	SC	TDPA	M	A	B	C2	C3	T3S2	T3S3	T3S2R4	OTROS	A	B	C	K'	D	LATITUD	LONGITUD
X. C. Gomez Palacio - Jimenez	0.00	3	0	2999	1.1	58.4	2.9	6.4	2.4	15.8	4.4	7.4	1.2	59.5	2.9	37.6	0.100	0.542	25.632886	-103.506115
Lim. Edos. Term. Dgo. Ppia. Coah.	15.60																			
X. C. La Cuchilla - Torreón	17.36	1	0	2373	0.8	49.3	3.2	8.0	2.4	19.5	5.1	10.2	1.5	50.1	3.2	46.7	0.089	0.503	25.655556	-103.381926
X. C. La Cuchilla - Torreón	17.36	1	0	2442	0.8	51.7	3.3	7.9	2.1	18.6	4.9	9.5	1.2	52.5	3.3	44.2	0.101	0.522	25.647807	-103.354529
X. C. Torreón - Saltillo	40.70	1	0	2361	3.1	50.3	3.3	8.1	2.9	16.6	5.2	8.9	1.6	53.4	3.3	43.3	0.092	0.509	25.547587	-103.227192

28 CARR: Yerbanis - Gómez Palicio (Cuota)

CLAVE: 10003

RUTA: MEX-040D

AÑO: 2016

LUGAR	ESTACION				CLASIFICACION VEHICULAR EN PORCIENTO														COORDENADAS	
	KM	TE	SC	TDPA	M	A	B	C2	C3	T3S2	T3S3	T3S2R4	OTROS	A	B	C	K'	D	LATITUD	LONGITUD
Ent. Yerbanis	118.00																			
Caseta de Cobro Cuencamé	143.22	2	1	1128	0.5	68.0	7.8	3.9	2.3	9.6	1.9	5.3	0.7	68.5	7.8	23.7	0.089	0.500	24.981672	-103.735237
Caseta de Cobro Cuencamé	143.22	2	2	1128	0.5	68.0	7.8	3.9	2.3	9.6	1.9	5.3	0.7	68.5	7.8	23.7	0.089	0.500	24.981672	-103.735237
X. C. Cuencamé - Torreón	180.00	1	1	2168	0.4	47.8	11.0	9.7	2.2	15.7	3.3	9.2	0.7	48.2	11.0	40.8	0.093	0.514	25.130202	-103.753591
X. C. Cuencamé - Torreón	180.00	1	2	2291	0.4	51.1	7.7	8.0	3.8	16.1	3.6	8.4	0.9	51.5	7.7	40.8	0.080	0.514	25.130203	-103.753593
X. C. Cuencamé - Torreón	180.00	3	1	2623	0.7	48.2	12.7	10.2	2.1	13.9	3.6	7.7	0.9	48.9	12.7	38.4	0.077	0.506	25.146301	-103.752963
X. C. Cuencamé - Torreón	180.00	3	2	2691	0.5	48.9	11.4	8.8	2.4	15.6	3.5	8.0	0.9	49.4	11.4	39.2	0.072	0.506	25.146299	-103.752965
Caseta de Cobro León Guzmán	212.71	1	1	2693	0.8	54.1	8.8	9.4	2.5	12.9	2.9	7.7	0.9	54.9	8.8	36.3	0.111	0.514	25.504299	-103.639842
Caseta de Cobro León Guzmán	212.71	1	2	2550	0.7	49.6	10.6	9.7	2.7	14.4	3.3	8.1	0.9	50.3	10.6	39.1	0.114	0.514	25.504301	-103.639840
Caseta de Cobro León Guzmán	212.71	2	1	1692	0.3	50.4	10.9	4.0	3.3	18.0	3.7	8.1	1.3	50.7	10.9	38.4	0.089	0.500	25.520615	-103.639506
Caseta de Cobro León Guzmán	212.71	2	2	1692	0.3	50.4	10.9	4.0	3.3	18.0	3.7	8.1	1.3	50.7	10.9	38.4	0.089	0.500	25.520615	-103.639506

DURANGO

28 CARR: Yerbanis - Gómez Palicio (Cuota)

CLAVE: 10003

RUTA: MEX-040D

AÑO: 2016

LUGAR	ESTACION				CLASIFICACION VEHICULAR EN PORCIENTO														COORDENADAS	
	KM	TE	SC	TDPA	M	A	B	C2	C3	T3S2	T3S3	T3S2R4	OTROS	A	B	C	K'	D	LATITUD	LONGITUD
Caseta de Cobro León Guzmán	212.71	3	1	1878	0.9	47.3	10.3	8.4	3.7	17.9	4.0	6.7	0.8	48.2	10.3	41.5	0.085	0.506	25.537913	-103.638263
Caseta de Cobro León Guzmán	212.71	3	2	1834	0.9	42.6	11.3	9.8	4.1	18.8	4.6	6.9	1.0	43.5	11.3	45.2	0.100	0.506	25.537884	-103.638259
T. C. Gómez Palacio - Jiménez	220.00																			

29 CARR: Amado Nervo - La Ochoa

CLAVE: 10012

RUTA: DGO-542

AÑO: 2016

LUGAR	ESTACION				CLASIFICACION VEHICULAR EN PORCIENTO														COORDENADAS	
	KM	TE	SC	TDPA	M	A	B	C2	C3	T3S2	T3S3	T3S2R4	OTROS	A	B	C	K'	D	LATITUD	LONGITUD
Amado Nervo	0.00	3	0	1890	4.4	83.5	2.5	7.2	0.5	1.2	0.5	0.0	0.2	87.9	2.5	9.6	0.088	0.506	23.852743	-104.173967
Villa Unión	25.00	1	0	3454	7.7	77.9	1.0	10.6	0.2	2.0	0.3	0.1	0.2	85.6	1.0	13.4	0.091	0.519	23.960523	-104.052461
La Ochoa	42.00	1	0	443	3.9	78.3	2.3	15.0	0.1	0.4	0.0	0.0	0.0	82.2	2.3	15.5	0.120	0.520	24.019961	-103.926275

30 CARR: Ceballos - El Mirador

CLAVE: 10417

RUTA: DGO-044

AÑO: 2016

LUGAR	ESTACION				CLASIFICACION VEHICULAR EN PORCIENTO														COORDENADAS	
	KM	TE	SC	TDPA	M	A	B	C2	C3	T3S2	T3S3	T3S2R4	OTROS	A	B	C	K'	D	LATITUD	LONGITUD
Ceballos	0.00	3	0	872	4.8	71.9	0.7	18.0	1.8	1.7	0.4	0.3	0.4	76.7	0.7	22.6	0.155	0.510	26.529893	-104.134369
T. C. Ent. La Zarca - Hidalgo del Parral	113.50	1	0	263	0.0	77.0	0.8	17.4	2.2	0.9	1.5	0.0	0.2	77.0	0.8	22.2	0.129	0.506	26.141472	-105.028722

31 CARR: Durango - Aserradero La Flor

CLAVE: 10422

RUTA: DGO-115

AÑO: 2016

LUGAR	ESTACION				CLASIFICACION VEHICULAR EN PORCIENTO														COORDENADAS	
	KM	TE	SC	TDPA	M	A	B	C2	C3	T3S2	T3S3	T3S2R4	OTROS	A	B	C	K'	D	LATITUD	LONGITUD
Durango	0.00	3	1	8669	2.0	90.1	1.0	5.7	0.8	0.2	0.0	0.0	0.2	92.1	1.0	6.9	0.073	0.509	23.984816	-104.664401
Durango	0.00	3	2	8995	2.5	89.1	1.1	6.1	0.8	0.2	0.0	0.0	0.2	91.6	1.1	7.3	0.066	0.509	23.984817	-104.664403
T. Der. Presa Guadalupe Victoria	4.00	3	1	5575	5.9	87.7	0.4	4.2	0.8	0.1	0.5	0.0	0.4	93.6	0.4	6.0	0.085	0.516	23.976195	-104.664583
T. Der. Presa Guadalupe Victoria	4.00	3	2	5948	9.7	83.0	0.4	5.0	0.9	0.1	0.5	0.0	0.4	92.7	0.4	6.9	0.093	0.516	23.976197	-104.664583
Periférico Sur de Durango	8.00	3	0	479	11.8	64.4	0.4	14.2	5.0	3.7	0.4	0.0	0.1	76.2	0.4	23.4	0.152	0.504	23.947646	-104.673741
La Casita	39.00	1	0	112	0.6	79.3	0.4	5.7	9.7	4.0	0.0	0.0	0.3	79.9	0.4	19.7	0.250	0.504	23.754208	-104.757043
Aserradero La Flor	72.00																			

DURANGO

32 CARR: Jabonoso - Esmeralda

CLAVE: 10004

RUTA: DGO-363

AÑO: 2016

LUGAR	ESTACION				CLASIFICACION VEHICULAR EN PORCIENTO													COORDENADAS		
	KM	TE	SC	TDPA	M	A	B	C2	C3	T3S2	T3S3	T3S2R4	OTROS	A	B	C	K'	D	LATITUD	LONGITUD
Jabonoso	0.00	3	0	3758	10.3	69.2	1.1	7.2	4.8	3.8	1.6	1.5	0.5	79.5	1.1	19.4	0.093	0.501	25.644510	-103.457129
T. Izq. Chimal	10.00	3	0	4605	16.1	66.0	0.6	8.1	3.2	3.6	1.3	0.6	0.5	82.1	0.6	17.3	0.087	0.504	25.692928	-103.443057
Esmeralda	16.30	1	0	2758	19.6	65.3	1.3	7.5	2.5	2.1	1.0	0.6	0.1	84.9	1.3	13.8	0.082	0.526	25.734480	-103.432659

33 CARR: La Torreña - Brittingham

CLAVE: 10010

RUTA: DGO-325

AÑO: 2016

LUGAR	ESTACION				CLASIFICACION VEHICULAR EN PORCIENTO													COORDENADAS		
	KM	TE	SC	TDPA	M	A	B	C2	C3	T3S2	T3S3	T3S2R4	OTROS	A	B	C	K'	D	LATITUD	LONGITUD
La Torreña	0.00	3	0	2668	21.0	54.1	0.4	7.2	6.7	5.6	2.8	1.6	0.6	75.1	0.4	24.5	0.069	0.506	25.638994	-103.580067
X. C. Gómez Palacio - Jiménez	7.00	1	0	3912	10.1	66.2	1.3	10.2	4.8	4.3	1.7	1.1	0.3	76.3	1.3	22.4	0.073	0.502	25.638893	-103.534248
X. C. Gómez Palacio - Jiménez	7.00	3	0	2501	5.7	74.9	1.5	6.7	4.7	3.9	1.1	0.9	0.6	80.6	1.5	17.9	0.073	0.513	25.641302	-103.520067
Chimal	16.00	1	0	2230	25.4	53.9	0.8	7.1	6.5	4.0	1.3	0.8	0.2	79.3	0.8	19.9	0.080	0.512	25.690732	-103.490841
Chimal	16.00	3	0	1462	19.9	49.1	2.0	8.6	13.3	3.9	2.0	0.9	0.3	69.0	2.0	29.0	0.081	0.502	25.694659	-103.488928
Brittingham	33.00	1	0	1366	8.6	62.2	1.5	10.1	6.0	7.1	2.0	2.1	0.4	70.8	1.5	27.7	0.089	0.505	25.773004	-103.575161

34 CARR: Libramiento de Torreón

CLAVE: 05516

RUTA: COA

AÑO: 2016

LUGAR	ESTACION				CLASIFICACION VEHICULAR EN PORCIENTO													COORDENADAS		
	KM	TE	SC	TDPA	M	A	B	C2	C3	T3S2	T3S3	T3S2R4	OTROS	A	B	C	K'	D	LATITUD	LONGITUD
X. C. Saltillo - Torreón	0.00	3	1	34975	2.7	82.9	1.6	5.1	1.9	2.3	2.5	0.6	0.4	85.6	1.6	12.8	0.064	0.502	25.539918	-103.370964
X. C. Saltillo - Torreón	0.00	3	2	34675	1.9	82.4	1.8	5.7	2.2	2.4	2.6	0.6	0.4	84.3	1.8	13.9	0.076	0.502	25.539854	-103.370502
T. C. La Cuchilla - Torreón (Baja)	7.30	1	1	19723	1.8	85.1	0.7	2.8	0.6	3.4	3.2	1.5	0.9	86.9	0.7	12.4	0.119	0.504	25.582445	-103.402500
T. C. La Cuchilla - Torreón (Alta)	7.30	1	1	16147	2.0	82.5	0.6	5.7	2.0	3.9	2.1	0.6	0.6	84.5	0.6	14.9	0.085	0.506	25.582343	-103.402591
T. C. La Cuchilla - Torreón (Baja)	7.30	1	2	20010	1.1	84.3	0.7	3.3	0.7	4.1	3.2	1.7	0.9	85.4	0.7	13.9	0.091	0.504	25.582025	-103.402714
T. C. La Cuchilla - Torreón (Alta)	7.30	1	2	16178	2.3	81.1	0.6	6.1	2.1	4.3	2.3	0.6	0.6	83.4	0.6	16.0	0.100	0.506	25.582212	-103.402644
Lim. Edos. Term. Coah. Ppia. Dgo.	11.80																			
T. C. Durango - Torreón	28.60																			

35 CARR: Libramiento Exterior Cuencamé

CLAVE: 10006

RUTA: DGO

AÑO: 2016

LUGAR	ESTACION				CLASIFICACION VEHICULAR EN PORCIENTO													COORDENADAS		
	KM	TE	SC	TDPA	M	A	B	C2	C3	T3S2	T3S3	T3S2R4	OTROS	A	B	C	K'	D	LATITUD	LONGITUD
Ent. La Chicharrona - Cuencamé	0.00	3	0	4145	0.5	39.6	7.1	7.2	3.8	24.0	6.3	9.7	1.8	40.1	7.1	52.8	0.073	0.500	24.842169	-103.693915
T. C. Durango - Torreón	8.40																			

DURANGO

36 CARR: Mezquital - San Miguel de Temoaya

CLAVE: 10006

RUTA: DGO

AÑO: 2016

LUGAR	ESTACION				CLASIFICACION VEHICULAR EN PORCIENTO													COORDENADAS		
	KM	TE	SC	TDPA	M	A	B	C2	C3	T3S2	T3S3	T3S2R4	OTROS	A	B	C	K'	D	LATITUD	LONGITUD
T. C. Durango - Mezquital	0.00	3	0	297	2.7	68.7	0.8	24.0	2.1	1.2	0.5	0.0	0.0	71.4	0.8	27.8	0.155	0.501	23.497649	-104.390830
San Miguel de Temoaya	48.00	1	0	215	1.3	67.0	0.6	26.2	2.8	0.9	1.2	0.0	0.0	68.3	0.6	31.1	0.149	0.504	23.304174	-104.508369

37 CARR: Ramal a San Juan del Río

CLAVE: 10001

RUTA: DGO-290

AÑO: 2016

LUGAR	ESTACION				CLASIFICACION VEHICULAR EN PORCIENTO													COORDENADAS		
	KM	TE	SC	TDPA	M	A	B	C2	C3	T3S2	T3S3	T3S2R4	OTROS	A	B	C	K'	D	LATITUD	LONGITUD
T. C. Durango - Ent. La Zarca	0.00	3	0	2900	1.2	78.1	1.0	18.0	0.6	0.9	0.1	0.0	0.1	79.3	1.0	19.7	0.112	0.508	24.796096	-104.495386
San Juan del Río	5.00	1	1	1821	1.2	80.8	0.9	15.9	0.3	0.6	0.1	0.1	0.1	82.0	0.9	17.1	0.099	0.526	24.787866	-104.477401
San Juan del Río	5.00	1	2	1642	1.2	78.4	1.0	18.0	0.4	0.6	0.2	0.1	0.1	79.6	1.0	19.4	0.110	0.526	24.787866	-104.477399

38 CARR: Súchil - Villa Unión

CLAVE: 10419

RUTA: DGO-241

AÑO: 2016

LUGAR	ESTACION				CLASIFICACION VEHICULAR EN PORCIENTO													COORDENADAS		
	KM	TE	SC	TDPA	M	A	B	C2	C3	T3S2	T3S3	T3S2R4	OTROS	A	B	C	K'	D	LATITUD	LONGITUD
Súchil	0.00	3	1	1173	3.0	85.9	0.9	8.8	0.6	0.4	0.3	0.0	0.1	88.9	0.9	10.2	0.105	0.501	23.630054	-103.924290
Súchil	0.00	3	2	1175	2.9	85.1	1.0	9.7	0.6	0.3	0.3	0.0	0.1	88.0	1.0	11.0	0.111	0.501	23.630023	-103.924293
Vicente Guerrero	13.40	1	0	1896	2.6	77.7	1.4	15.6	1.0	1.2	0.5	0.0	0.0	80.3	1.4	18.3	0.106	0.501	23.711727	-103.970257
X. C. Zacatecas - Durango	14.50	1	1	4375	3.0	82.8	1.7	10.5	0.4	0.8	0.5	0.1	0.2	85.8	1.7	12.5	0.083	0.507	23.740709	-103.984393
X. C. Zacatecas - Durango	14.50	1	2	4492	2.8	81.7	1.9	11.4	0.4	1.0	0.5	0.1	0.2	84.5	1.9	13.6	0.086	0.507	23.740747	-103.984418
X. C. Zacatecas - Durango	14.50	3	0	2659	2.9	76.1	0.7	17.9	0.6	1.4	0.2	0.1	0.1	79.0	0.7	20.3	0.093	0.503	23.748776	-103.988056
Villa Unión	41.40	1	0	2157	6.0	81.3	0.6	9.8	0.6	1.3	0.3	0.0	0.1	87.3	0.6	12.1	0.093	0.507	23.958951	-104.049550

39 CARR: Tlahualillo de Zaragoza - T.C. Gómez Palacio - Jiménez

CLAVE: 10419

RUTA: DGO

AÑO: 2016

LUGAR	ESTACION				CLASIFICACION VEHICULAR EN PORCIENTO													COORDENADAS		
	KM	TE	SC	TDPA	M	A	B	C2	C3	T3S2	T3S3	T3S2R4	OTROS	A	B	C	K'	D	LATITUD	LONGITUD
Tlahualillo de Zaragoza	0.00	3	0	821	12.1	64.8	1.3	15.0	0.9	3.3	0.7	0.4	1.5	76.9	1.3	21.8	0.101	0.508	26.119719	-103.448828
T. C. Gómez Palacio - Jiménez	37.00	1	0	795	5.8	72.9	1.0	9.8	4.1	6.0	0.0	0.4	0.0	78.7	1.0	20.3	0.087	0.501	26.156659	-103.775542

40 CARR: Yerbanís - Peñón Blanco

CLAVE: 10032

RUTA: DGO-316

AÑO: 2016

LUGAR	ESTACION				CLASIFICACION VEHICULAR EN PORCIENTO													COORDENADAS		
	KM	TE	SC	TDPA	M	A	B	C2	C3	T3S2	T3S3	T3S2R4	OTROS	A	B	C	K'	D	LATITUD	LONGITUD
Yerbanís	0.00	3	0	1108	1.6	77.7	2.5	13.6	1.3	2.1	0.7	0.3	0.2	79.3	2.5	18.2	0.087	0.513	24.735772	-103.847771

DURANGO

40 CARR: Yerbanís - Peñón Blanco

CLAVE: 10032

RUTA: DGO-316

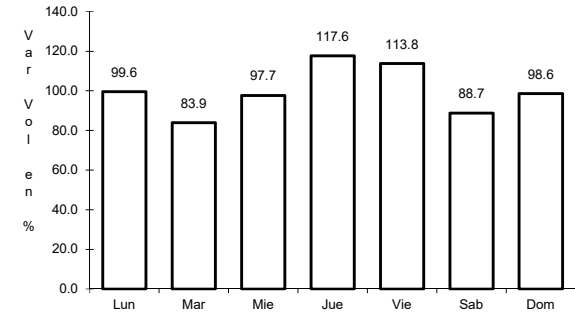
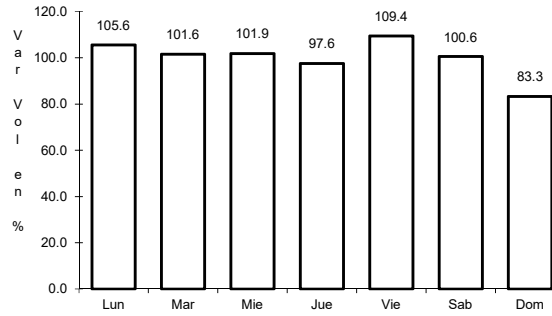
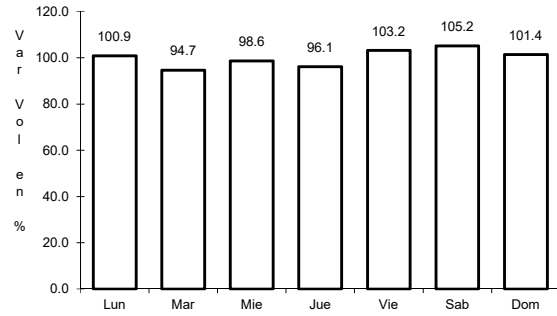
AÑO: 2016

L U G A R	E S T A C I O N				C L A S I F I C A C I O N V E H I C U L A R E N P O R C I E N T O														C O O R D E N A D A S	
	KM	TE	SC	TDPA	M	A	B	C2	C3	T3S2	T3S3	T3S2R4	OTROS	A	B	C	K'	D	LATITUD	LONGITUD
Peñón Blanco	22.00	1	0	1027	1.0	78.2	1.6	17.8	0.5	0.5	0.3	0.0	0.1	79.2	1.6	19.2	0.090	0.509	24.781758	-104.010711

1 CARR: Bermejillo - El Palmito

CLAVE: 10105

RUTA: MEX-030



Km: 0.00 Tipo: 3 Sent: 0

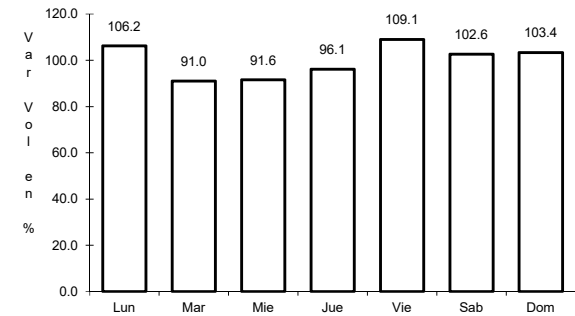
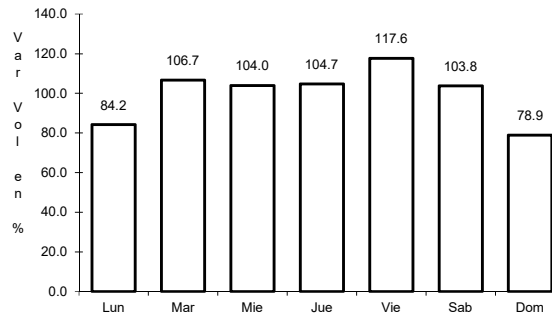
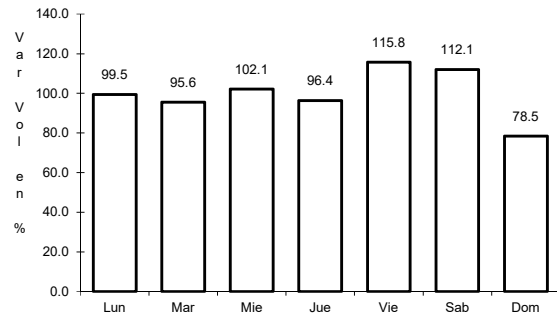
Km: 86.00 Tipo: 1 Sent: 0

Km: 160.00 Tipo: 1 Sent: 0

2 CARR: Durango - Ent. La Zarca

CLAVE: 10016

RUTA: MEX-045



Km: 0.00 Tipo: 3 Sent: 1

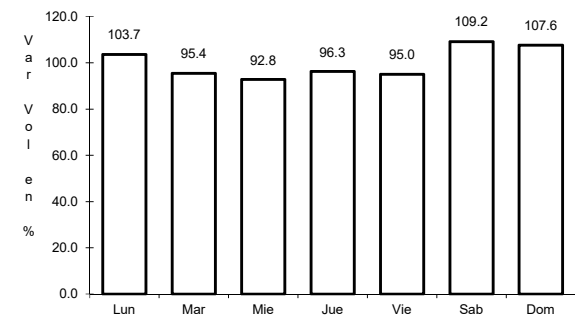
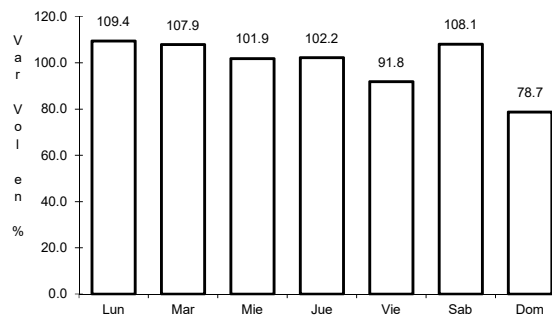
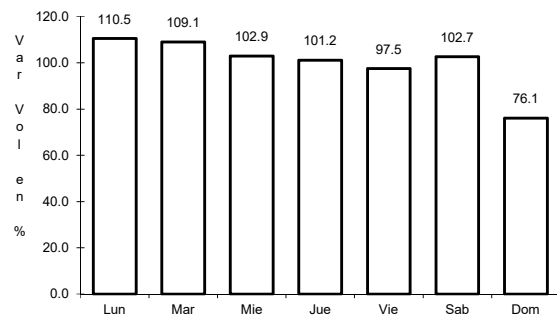
Km: 0.00 Tipo: 3 Sent: 2

Km: 239.50 Tipo: 1 Sent: 0

3 CARR: Durango - Mezquital

CLAVE: 10423

RUTA: MEX-023



Km: 0.00 Tipo: 3 Sent: 1

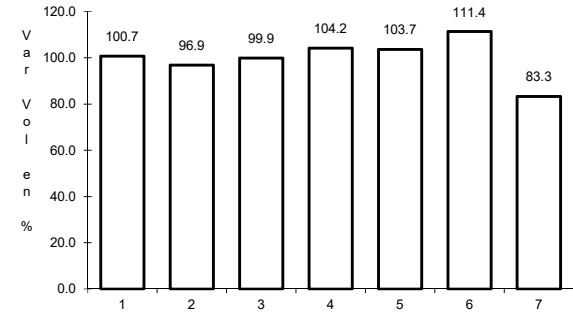
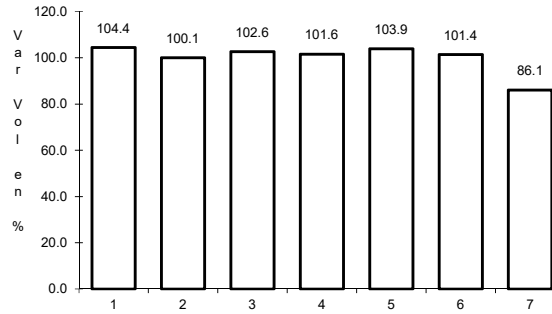
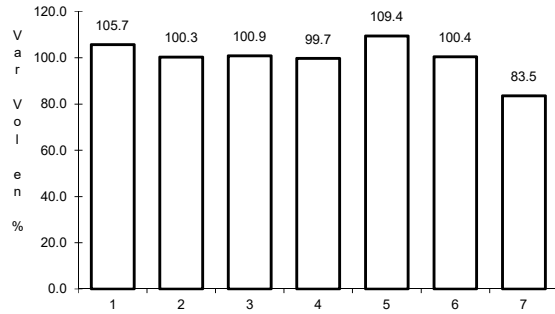
Km: 0.00 Tipo: 3 Sent: 2

Km: 13.00 Tipo: 3 Sent: 0

4 CARR: Durango - Torreón

CLAVE: 10085

RUTA: MEX-040



Km: 0.00 Tipo: 3 Sent: 1

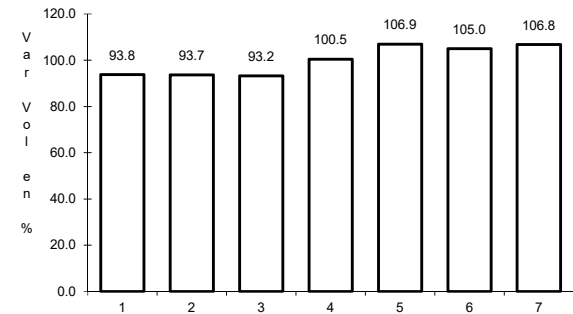
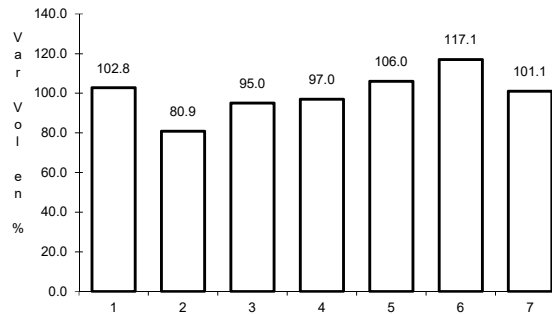
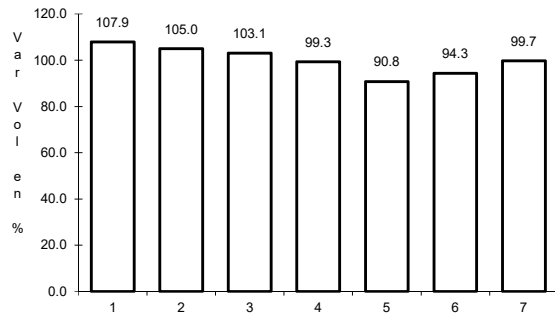
Km: 0.00 Tipo: 3 Sent: 2

Km: 120.90 Tipo: 1 Sent: 0

5 CARR: Durango - Villa Unión

CLAVE: 0083

RUTA: MEX-040



Km: 0.00 Tipo: 3 Sent: 0

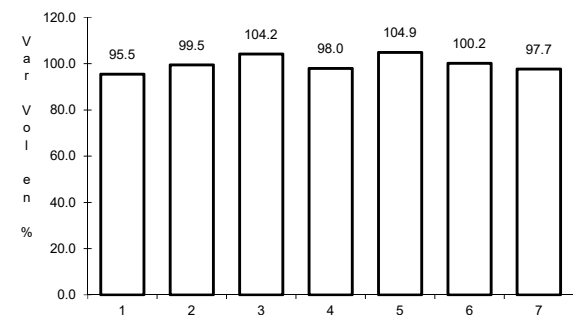
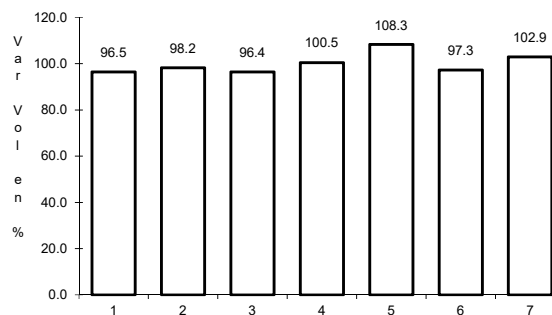
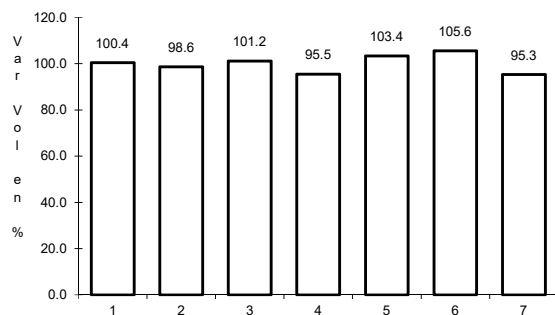
Km: 145.50 Tipo: 1 Sent: 0

Km: 294.40 Tipo: 1 Sent: 0

6 CARR: Ent. La Chicharrona - Cuencamé

CLAVE: 00152

RUTA: MEX-049



Km: 0.00 Tipo: 3 Sent: 1

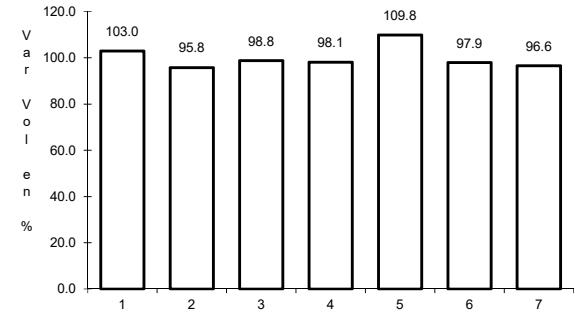
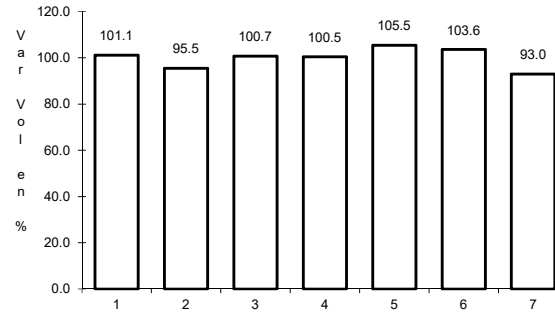
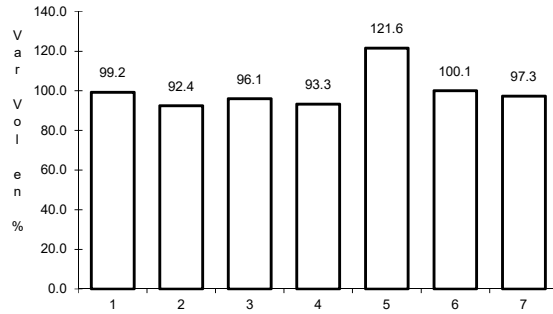
Km: 0.00 Tipo: 3 Sent: 2

Km: 124.50 Tipo: 1 Sent: 0

7 CARR: Ent. La Zarca - Hidalgo del Parral

CLAVE: 00488

RUTA: MEX-045



Km: 0.00 Tipo: 3 Sent: 0

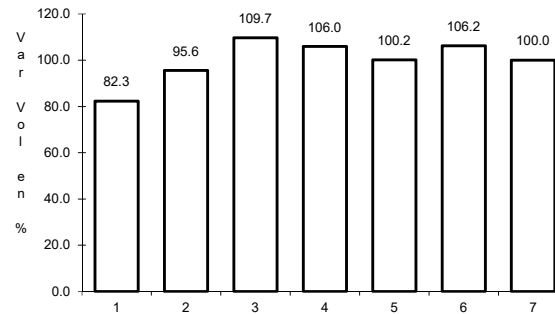
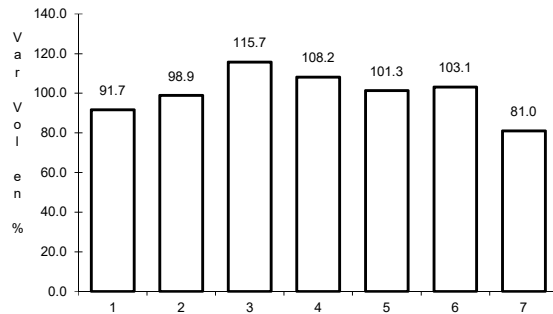
Km: 92.35 Tipo: 3 Sent: 0

Km: 171.00 Tipo: 1 Sent: 0

8 CARR: Ent. Los Herrera - Topia

CLAVE: 10090

RUTA: MEX-036



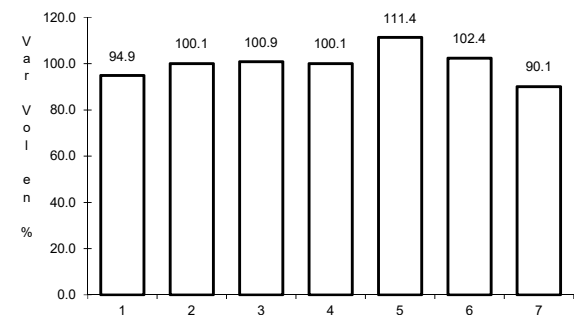
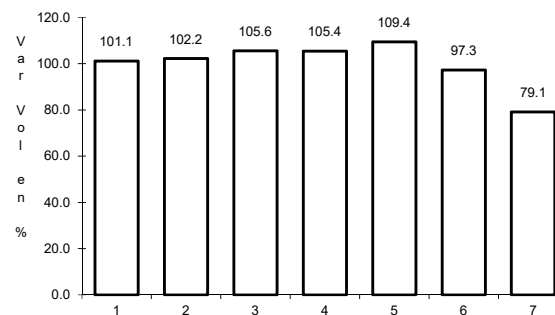
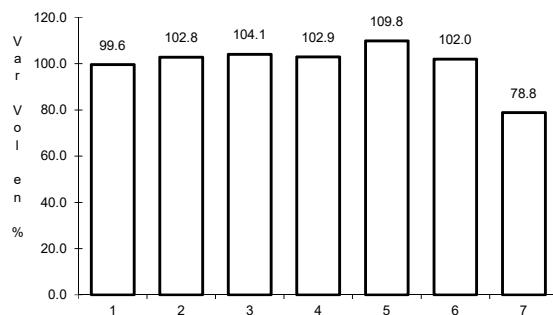
Km: 0.00 Tipo: 3 Sent: 0

Km: 80.00 Tipo: 1 Sent: 0

9 CARR: Gómez Palacio - Jiménez

CLAVE: 00006

RUTA: MEX-049



Km: 0.00 Tipo: 3 Sent: 1

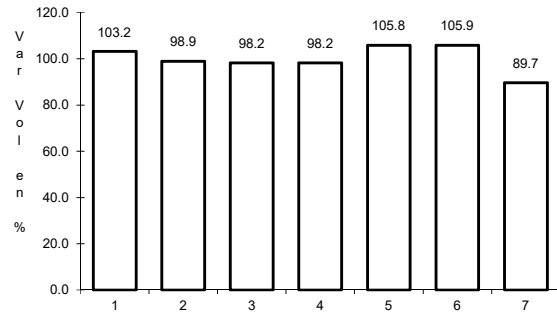
Km: 0.00 Tipo: 3 Sent: 2

Km: 107.95 Tipo: 1 Sent: 0

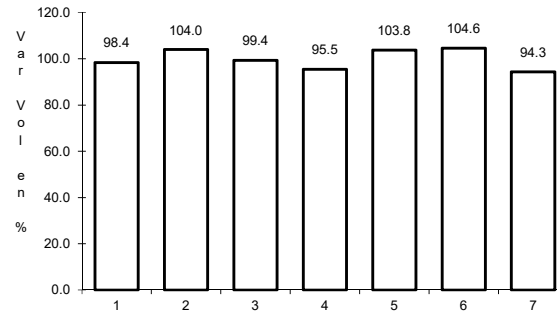
10 CARR: Gómez Palacio - La Unión

CLAVE: 10009

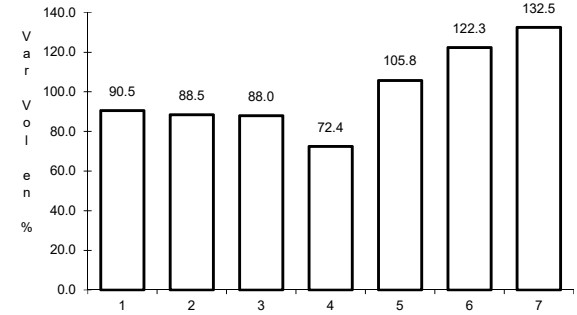
RUTA: MEX-040



Km: 0.00 Tipo: 3 Sent: 0



Km: 20.90 Tipo: 1 Sent: 0

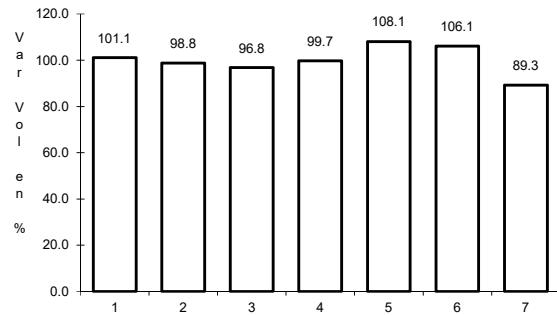


Km: 42.20 Tipo: 1 Sent: 0

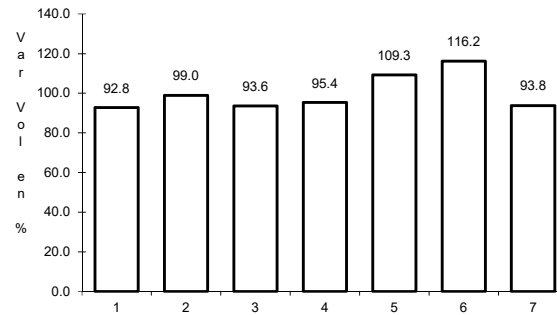
11 CARR: Gómez Palacio - Tlahualillo

CLAVE: 10005

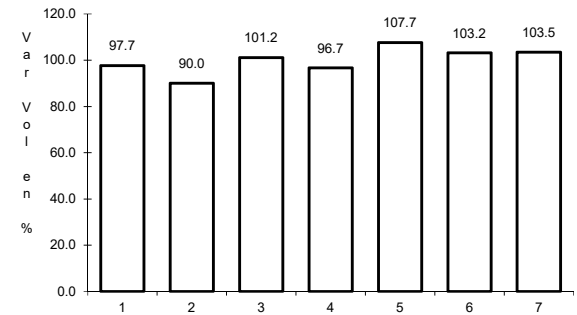
RUTA: MEX-040



Km: 5.60 Tipo: 1 Sent: 0



Km: 31.44 Tipo: 1 Sent: 0

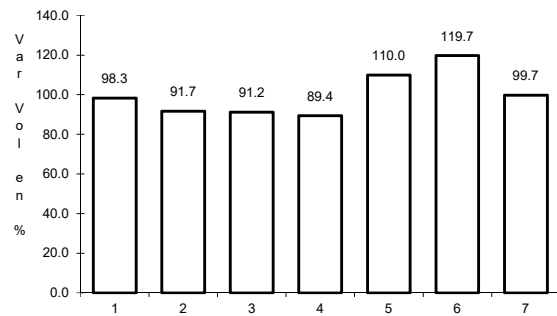


Km: 72.90 Tipo: 1 Sent: 0

12 CARR: Gregorio García - Francisco I. Madero

CLAVE: 00110

RUTA: MEX-040

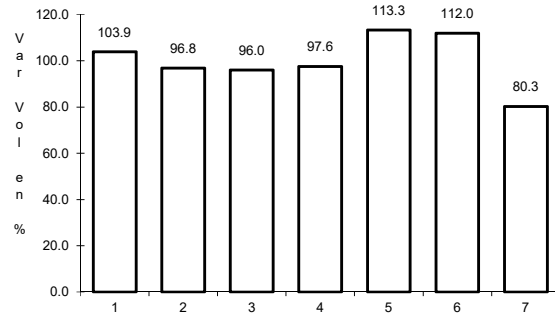


Km: 9.60 Tipo: 1 Sent: 0

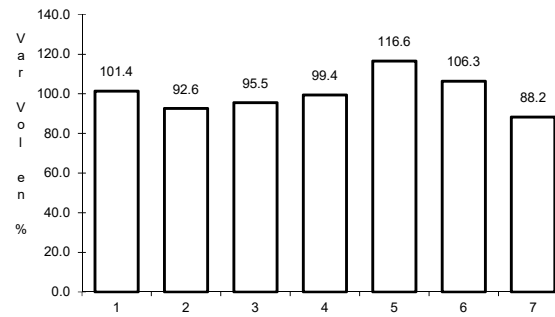
13 CARR: Guadalupe Aguilera - Tepehuanes

CLAVE: 10220

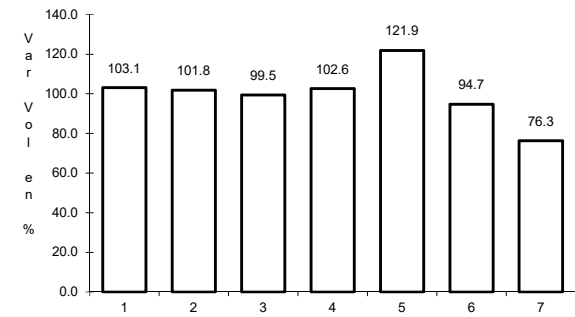
RUTA: MEX-023



Km: 0.00 Tipo: 3 Sent: 1



Km: 0.00 Tipo: 3 Sent: 2

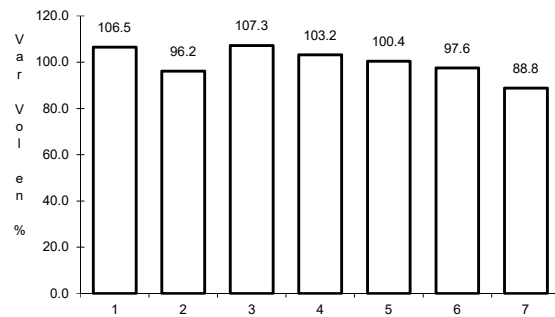


Km: 169.00 Tipo: 1 Sent: 0

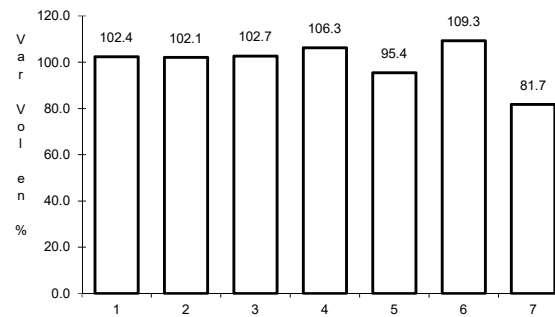
14 CARR: Hidalgo del Parral - Guadalupe y Calvo

CLAVE: 00802

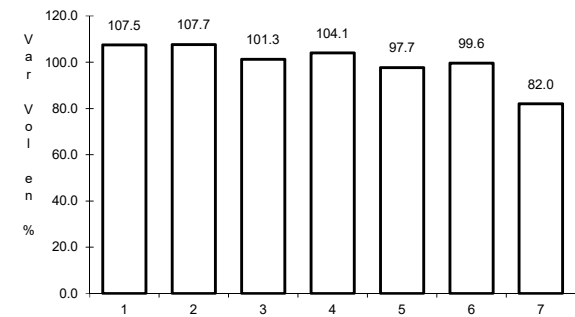
RUTA: MEX-024



Km: 0.00 Tipo: 3 Sent: 0



Km: 110.00 Tipo: 1 Sent: 0

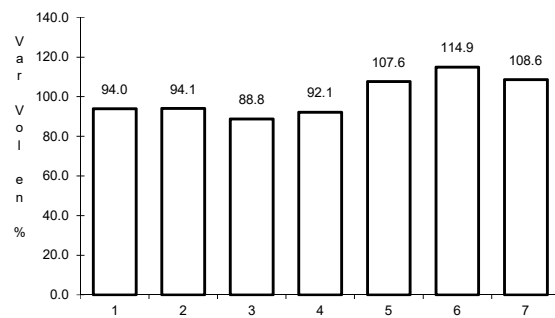


Km: 212.00 Tipo: 1 Sent: 0

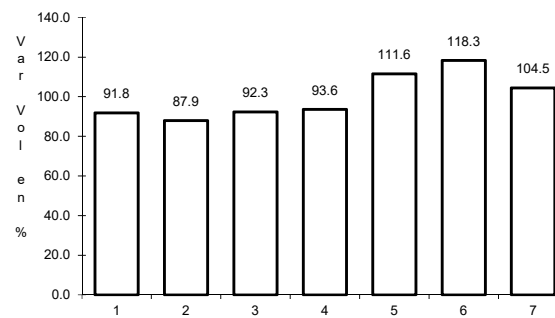
15 CARR: Libramiento Cuencamé

CLAVE: 10006

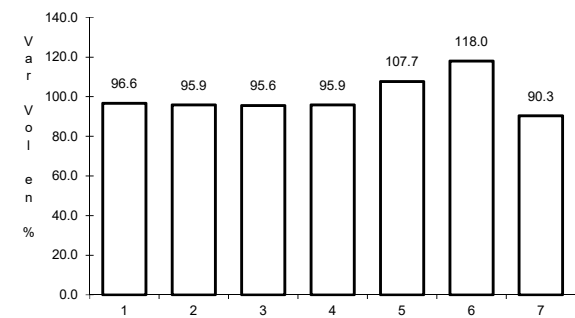
RUTA: MEX



Km: 0.00 Tipo: 3 Sent: 1



Km: 0.00 Tipo: 3 Sent: 2

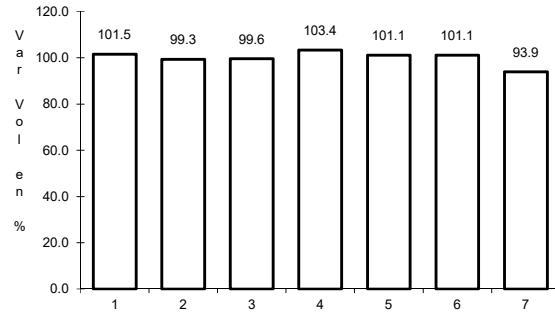


Km: 2.60 Tipo: 1 Sent: 1

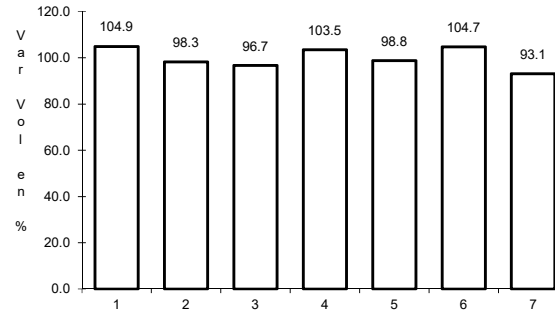
16 CARR: Libramiento Oriente de Durango

CLAVE:

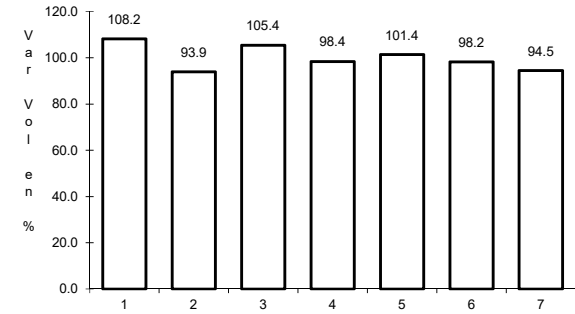
RUTA: MEX-045



Km: 0.00 Tipo: 3 Sent: 1



Km: 0.00 Tipo: 3 Sent: 2

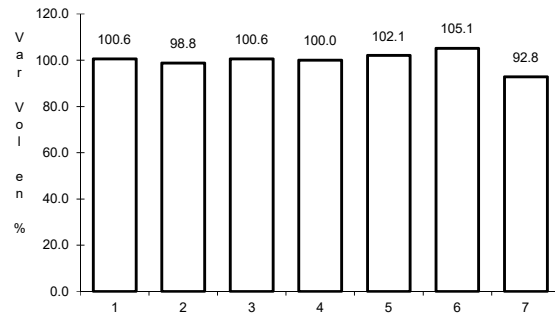


Km: 10.50 Tipo: 1 Sent: 1

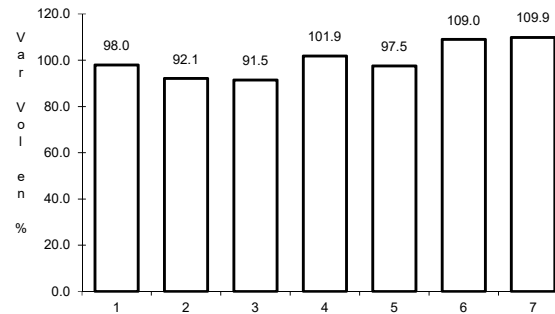
17 CARR: Libramiento Sur de Durango

CLAVE:

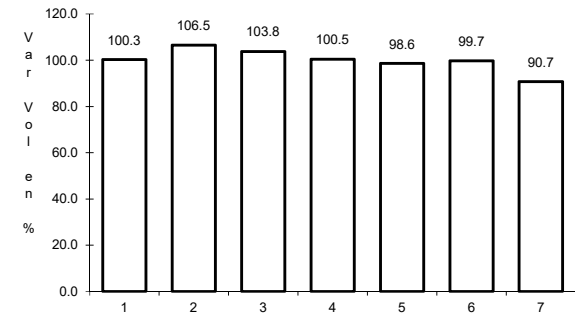
RUTA: MEX-045



Km: 0.00 Tipo: 3 Sent: 0



Km: 19.50 Tipo: 1 Sent: 0

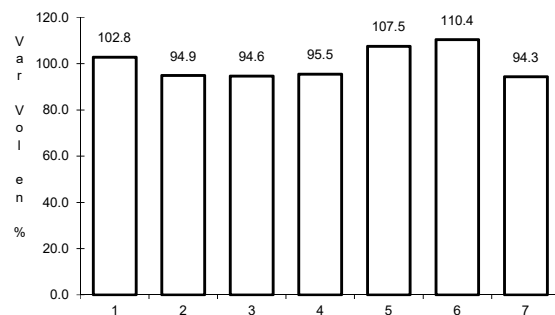


Km: 27.70 Tipo: 1 Sent: 0

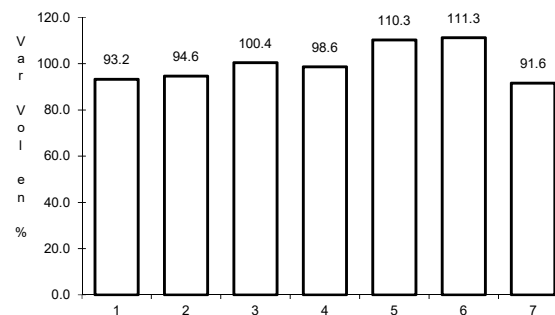
18 CARR: Pedriceña - Ent. Rodeo

CLAVE: 10002

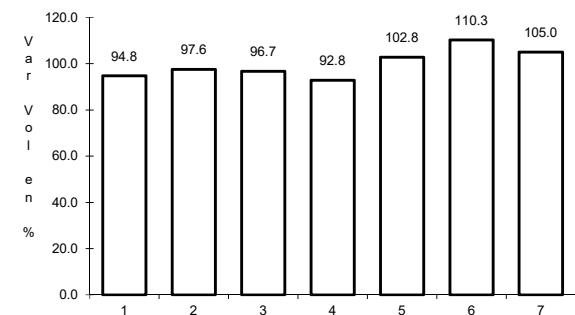
RUTA: MEX-034



Km: 0.00 Tipo: 3 Sent: 0



Km: 45.00 Tipo: 1 Sent: 0

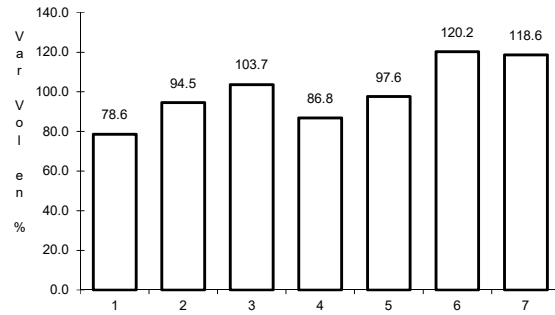


Km: 98.00 Tipo: 1 Sent: 0

19 CARR: Ramal a Otinapa

CLAVE: 10002

RUTA: MEX



Km: 0.00

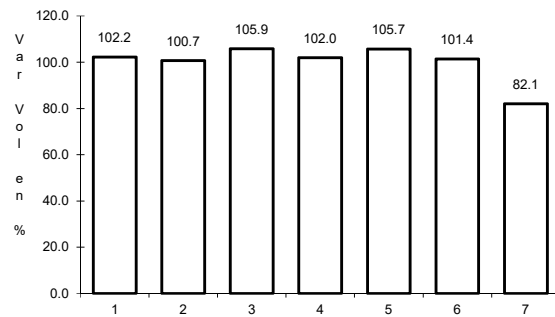
Tipo: 3

Sent: 0

20 CARR: Ramal a Santa Clara

CLAVE: 10287

RUTA: MEX-049



Km: 0.00

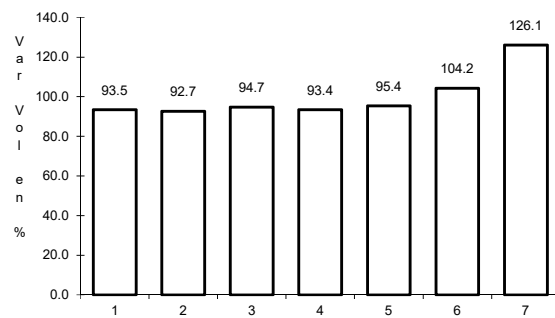
Tipo: 3

Sent: 0

21 CARR: Ramal a Villa Juárez

CLAVE: 10287

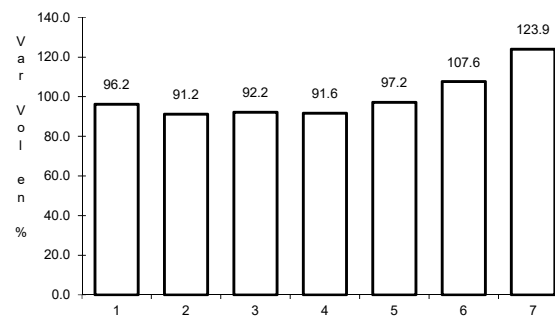
RUTA: MEX-040



Km: 0.00

Tipo: 3

Sent: 1



Km: 0.00

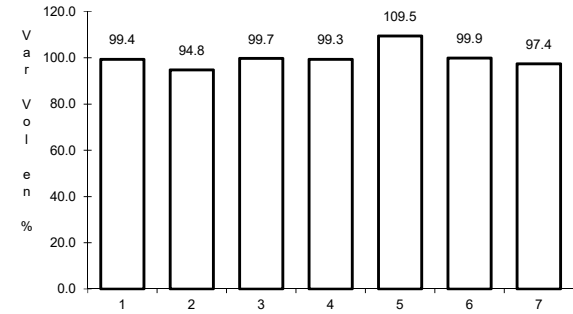
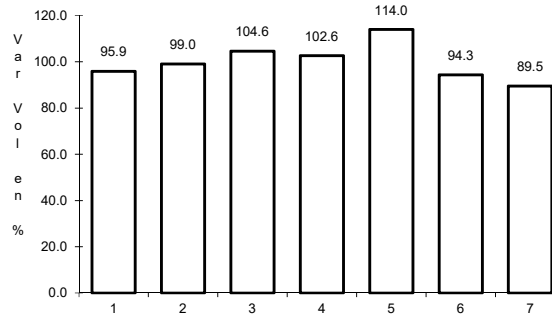
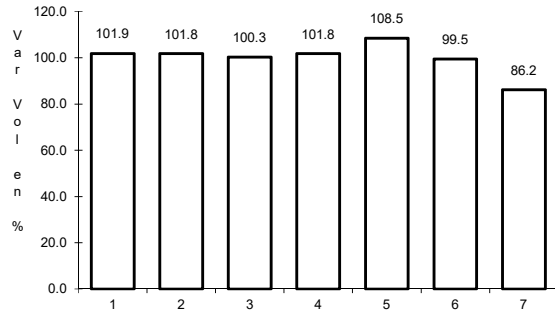
Tipo: 3

Sent: 2

22 CARR: Zacatecas - Durango

CLAVE: 00544

RUTA: MEX-045



Km: 6.40

Tipo: 3

Sent: 1

Km: 6.40

Tipo: 3

Sent: 2

Km: 121.00

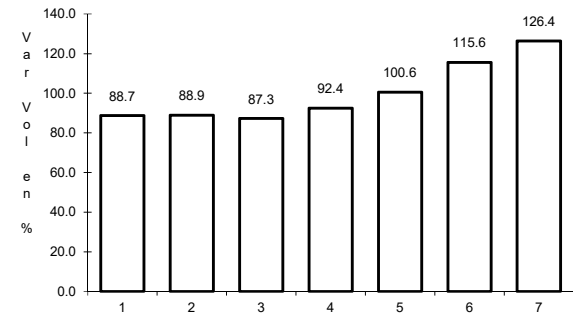
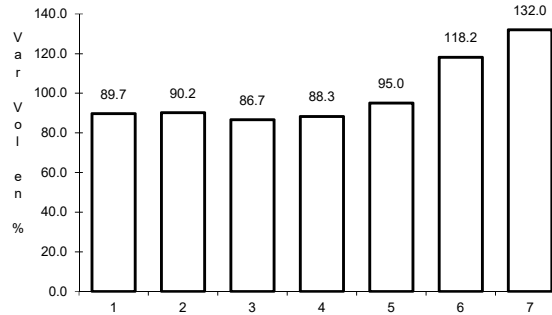
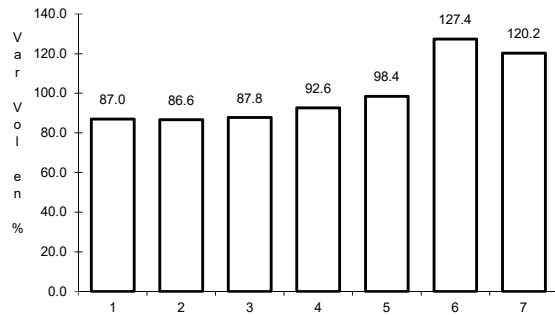
Tipo: 3

Sent: 0

23 CARR: Durango - Mazatlán (Cuota)

CLAVE: 00084

RUTA: MEX-040D



Km: 20.50

Tipo: 3

Sent: 0

Km: 44.50

Tipo: 1

Sent: 0

Km: 208.35

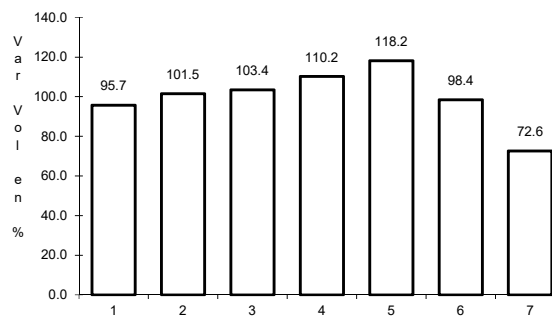
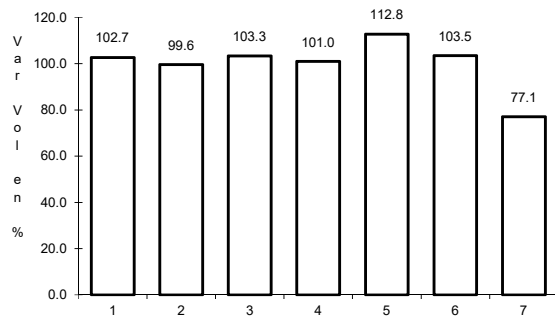
Tipo: 1

Sent: 0

24 CARR: Durango - Yerbanís (Cuota)

CLAVE: 10003

RUTA: MEX-040D



Km: 5.30

Tipo: 1

Sent: 1

Km: 5.30

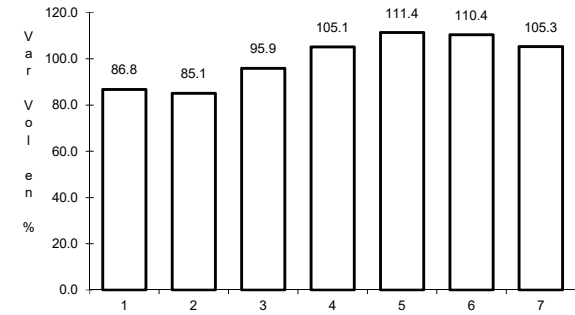
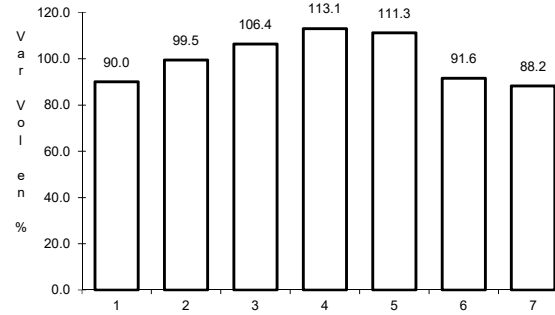
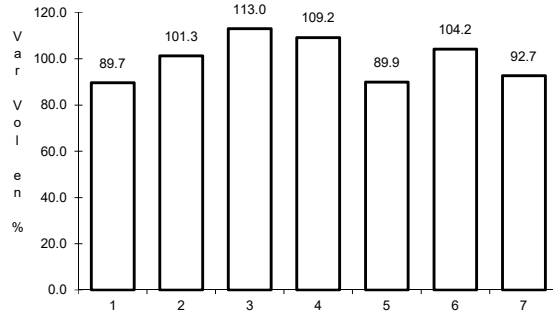
Tipo: 1

Sent: 2

25 CARR: Gómez Palacio - Corralitos (Cuota)

CLAVE: 00016

RUTA: MEX-049D



Km: 38.20 Tipo: 1 Sent: 1

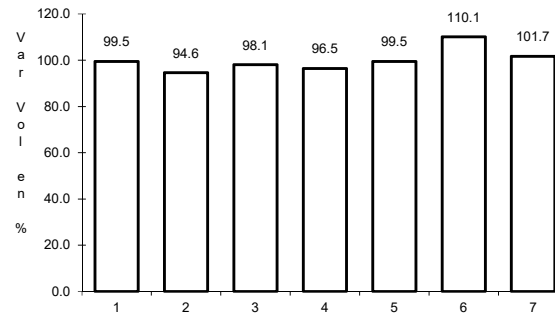
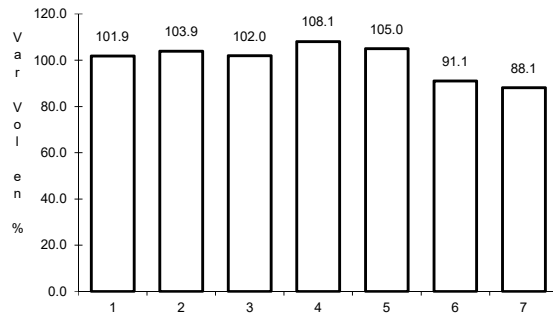
Km: 38.20 Tipo: 1 Sent: 2

Km: 194.00 Tipo: 1 Sent: 1

26 CARR: Libramiento de Durango (Cuota)

CLAVE: 10006

RUTA: MEX-040D



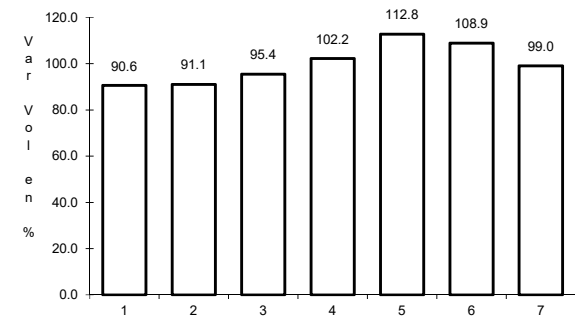
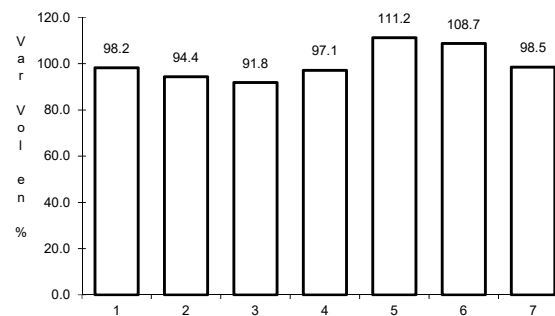
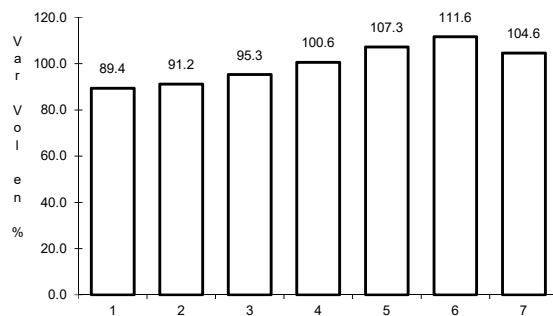
Km: 0.00 Tipo: 3 Sent: 0

Km: 21.60 Tipo: 1 Sent: 0

27 CARR: Libramiento Norte de Torreón (Cuota)

CLAVE:

RUTA: MEX-040D



Km: 0.00 Tipo: 3 Sent: 0

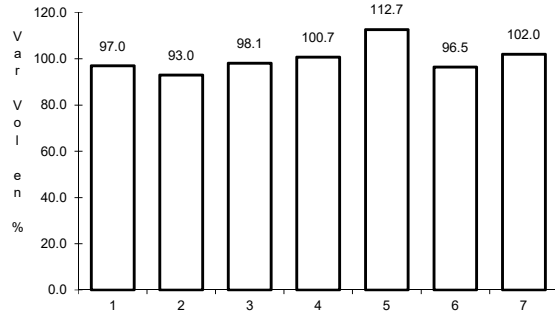
Km: 17.36 Tipo: 1 Sent: 0

Km: 40.70 Tipo: 1 Sent: 0

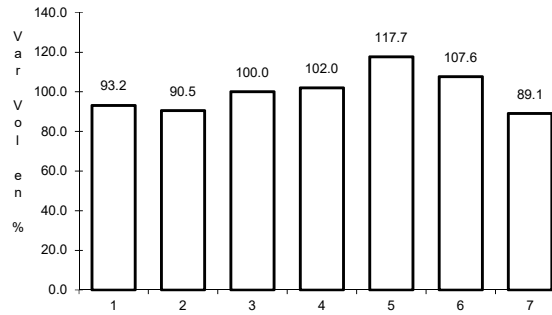
28 CARR: Yerbanis - Gómez Palicio (Cuota)

CLAVE: 10003

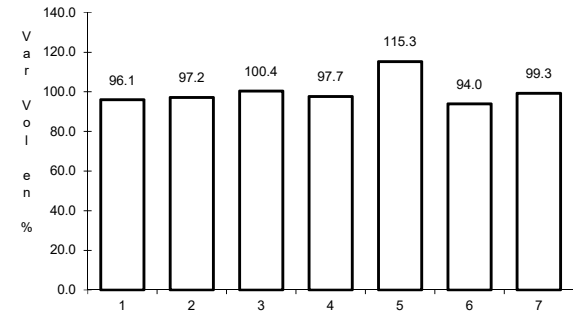
RUTA: MEX-040D



Km: 180.00 Tipo: 1 Sent: 1



Km: 180.00 Tipo: 1 Sent: 2

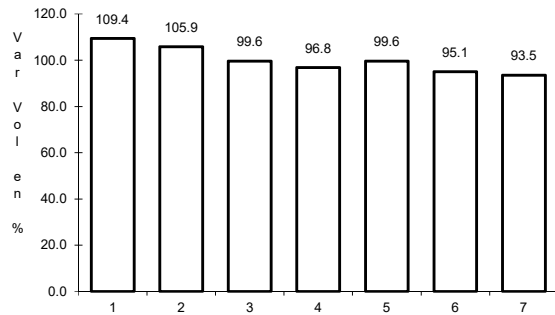


Km: 212.71 Tipo: 3 Sent: 1

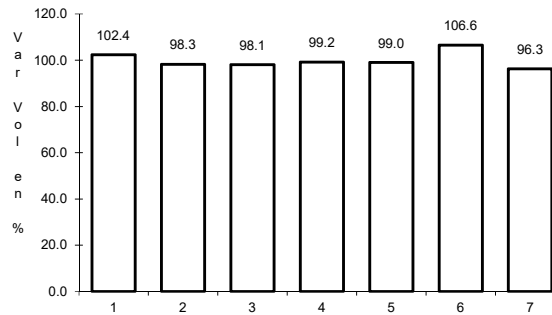
29 CARR: Amado Nervo - La Ochoa

CLAVE: 10012

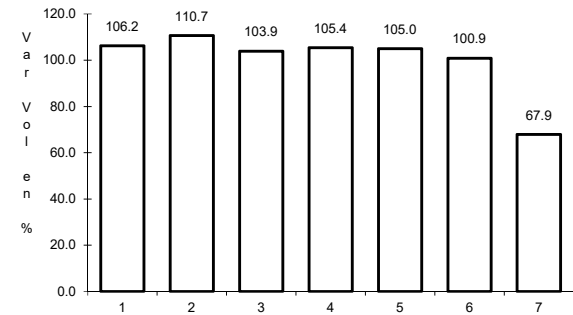
RUTA: DGO-542



Km: 0.00 Tipo: 3 Sent: 0



Km: 25.00 Tipo: 1 Sent: 0

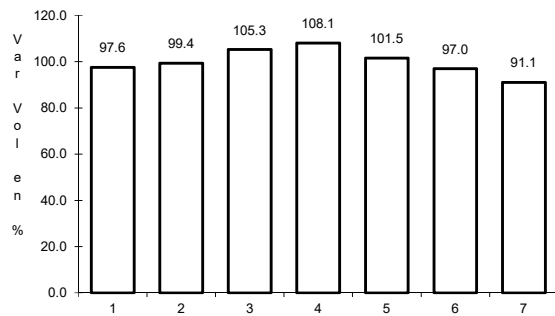


Km: 42.00 Tipo: 1 Sent: 0

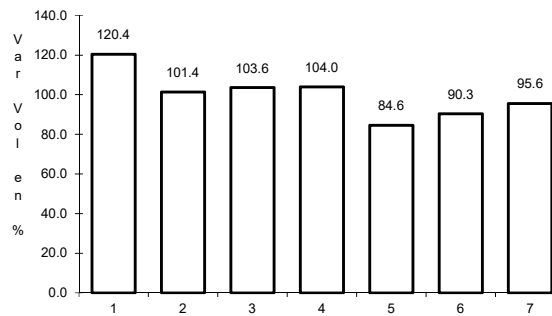
30 CARR: Ceballos - El Mirador

CLAVE: 10417

RUTA: DGO-044



Km: 0.00 Tipo: 3 Sent: 0

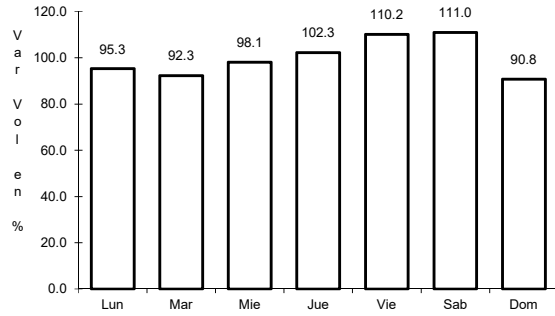


Km: 113.50 Tipo: 1 Sent: 0

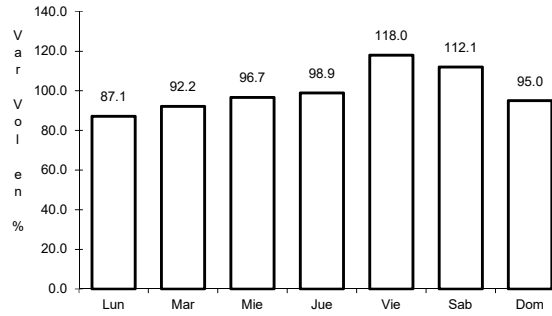
31 CARR: Durango - Aserradero La Flor

CLAVE: 10422

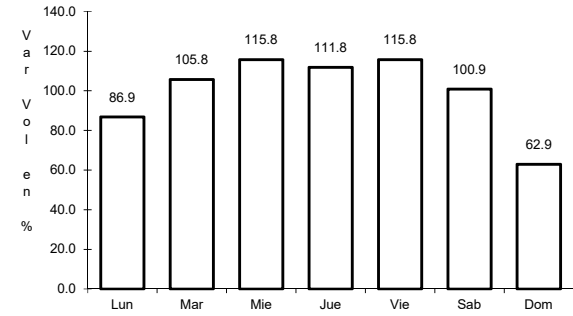
RUTA: DGO-115



Km: 0.00 Tipo: 3 Sent: 1



Km: 0.00 Tipo: 3 Sent: 2

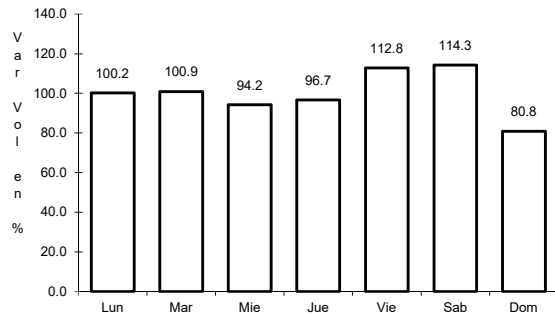


Km: 39.00 Tipo: 1 Sent: 0

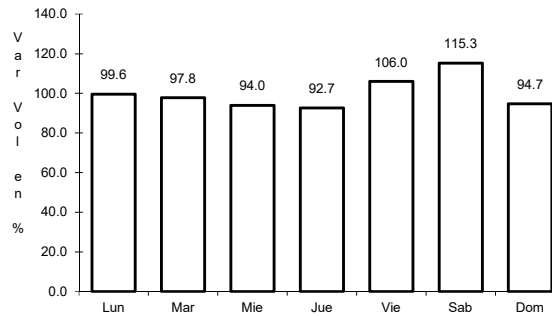
32 CARR: Jabonoso - Esmeralda

CLAVE: 10004

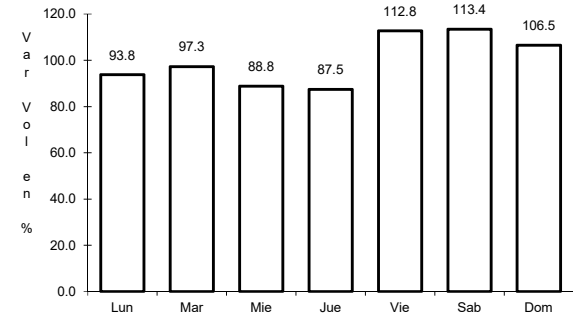
RUTA: DGO-363



Km: 0.00 Tipo: 3 Sent: 0



Km: 10.00 Tipo: 3 Sent: 0

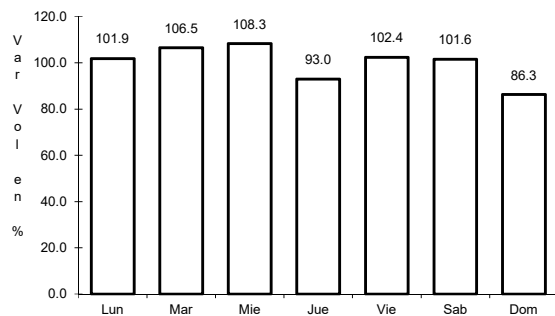


Km: 16.30 Tipo: 1 Sent: 0

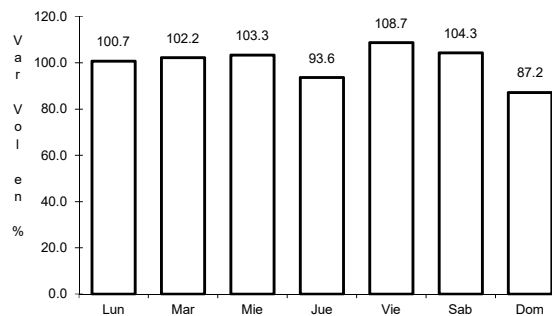
33 CARR: La Torreña - Brittingham

CLAVE: 10010

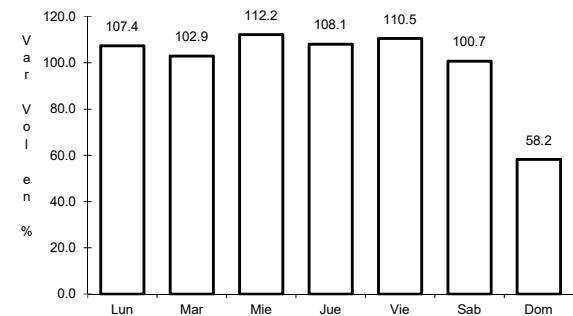
RUTA: DGO-325



Km: 0.00 Tipo: 3 Sent: 0



Km: 16.00 Tipo: 1 Sent: 0

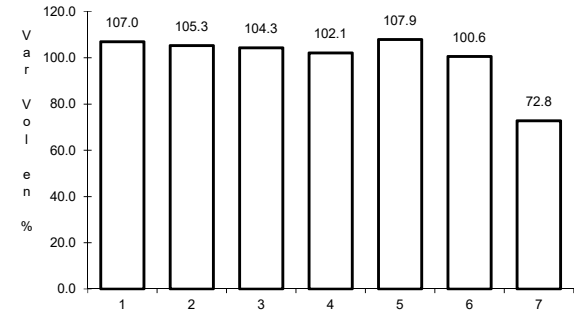
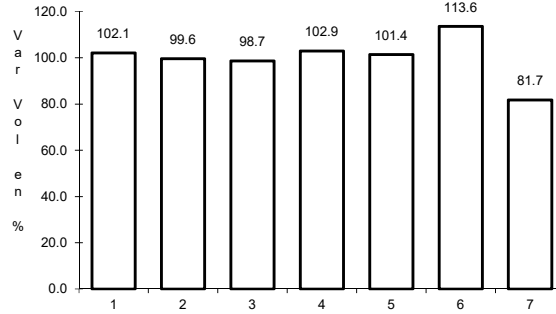
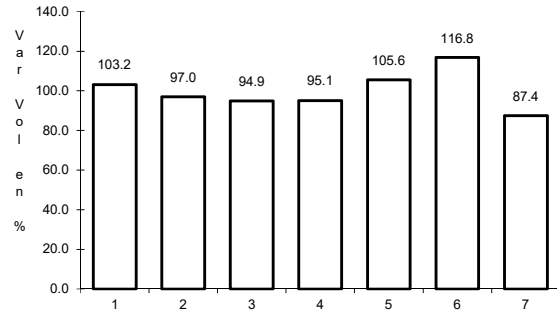


Km: 33.00 Tipo: 1 Sent: 0

34 CARR: Libramiento de Torreón

CLAVE: 05516

RUTA: COA



Km: 0.00 Tipo: 3 Sent: 1

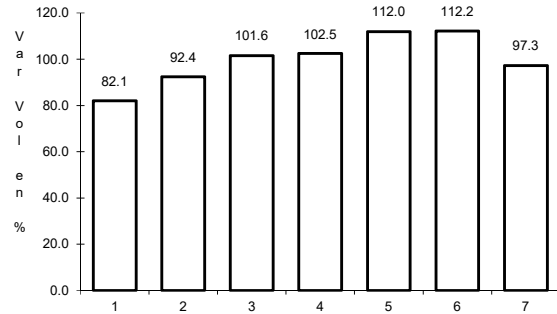
Km: 0.00 Tipo: 3 Sent: 2

Km: 7.30 Tipo: 1 Sent: 1

35 CARR: Libramiento Exterior Cuencamé

CLAVE: 10006

RUTA: DGO

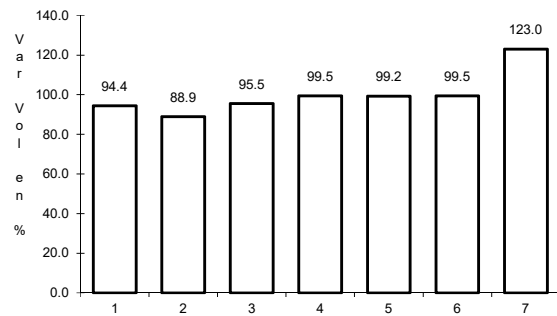


Km: 0.00 Tipo: 3 Sent: 0

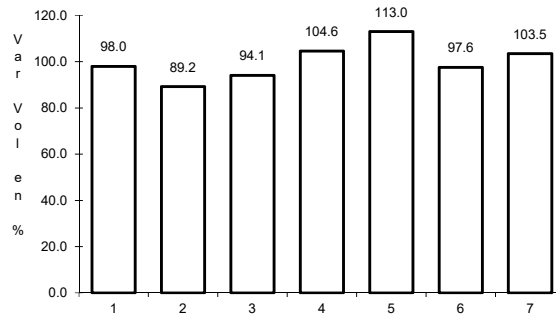
36 CARR: Mezquital - San Miguel de Temoaya

CLAVE: 10006

RUTA: DGO



Km: 0.00 Tipo: 3 Sent: 0

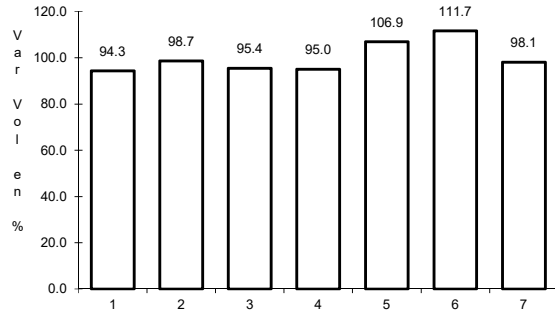


Km: 48.00 Tipo: 1 Sent: 0

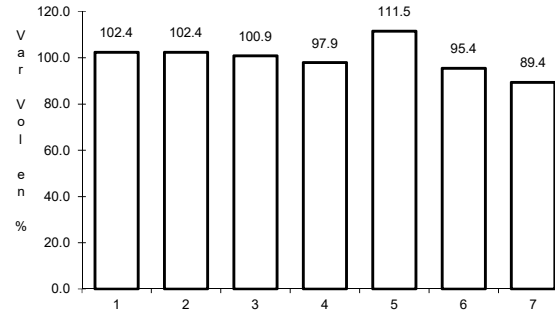
37 CARR: Ramal a San Juan del Río

CLAVE: 10001

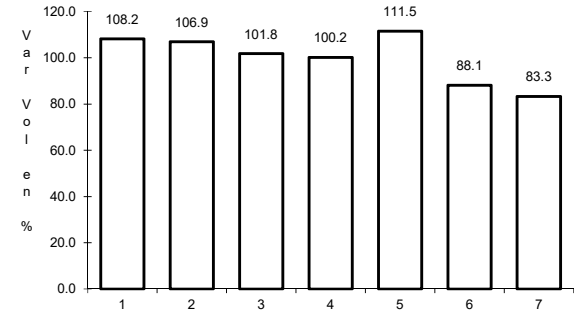
RUTA: DGO-290



Km: 0.00 Tipo: 3 Sent: 0



Km: 5.00 Tipo: 1 Sent: 1

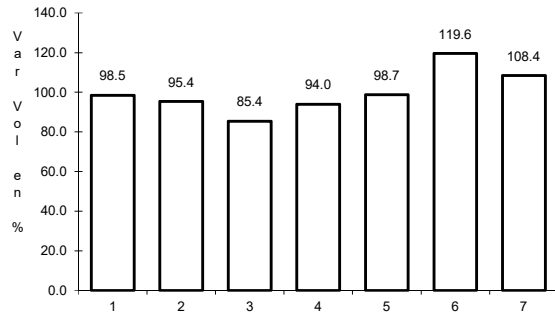


Km: 5.00 Tipo: 1 Sent: 2

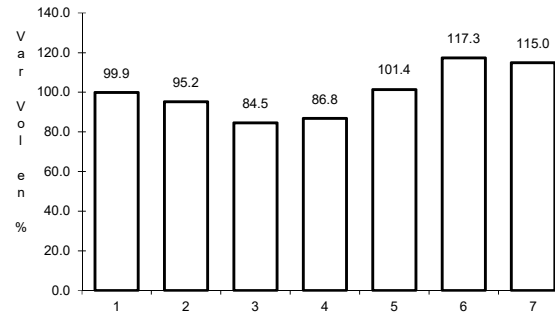
38 CARR: Súchil - Villa Unión

CLAVE: 10419

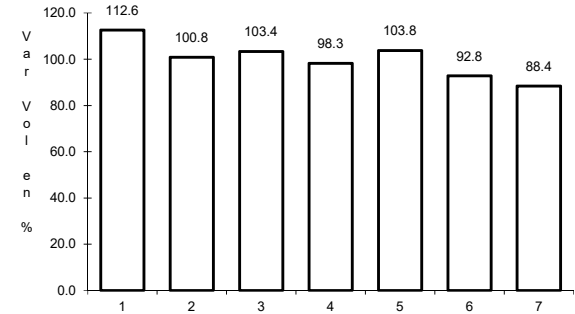
RUTA: DGO-241



Km: 0.00 Tipo: 3 Sent: 1



Km: 0.00 Tipo: 3 Sent: 2

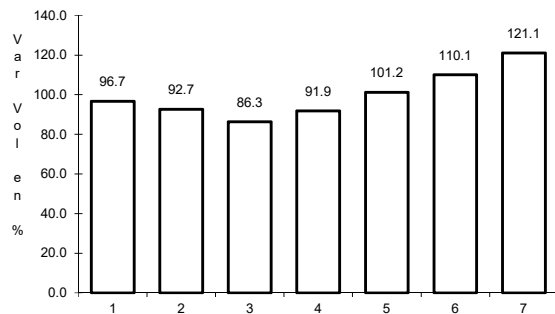


Km: 41.40 Tipo: 1 Sent: 0

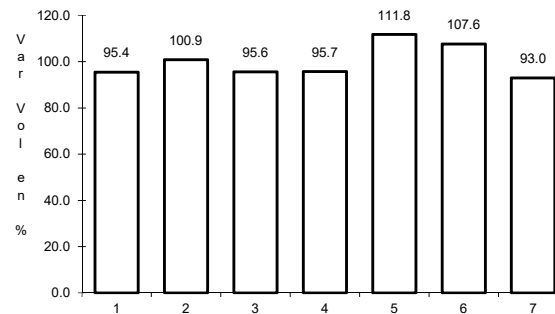
39 CARR: Tlahualillo de Zaragoza - T.C. Gómez Palacio - Jiménez

CLAVE: 10419

RUTA: DGO



Km: 0.00 Tipo: 3 Sent: 0

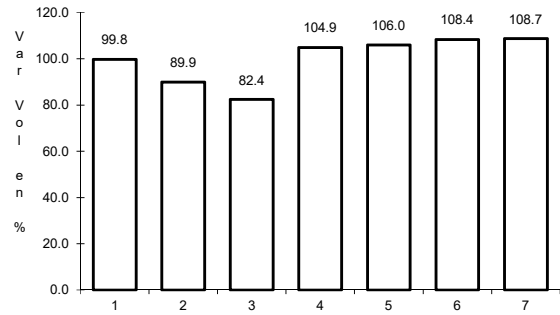


Km: 37.00 Tipo: 1 Sent: 0

40 CARR: Yerbanis - Peñón Blanco

CLAVE: 10032

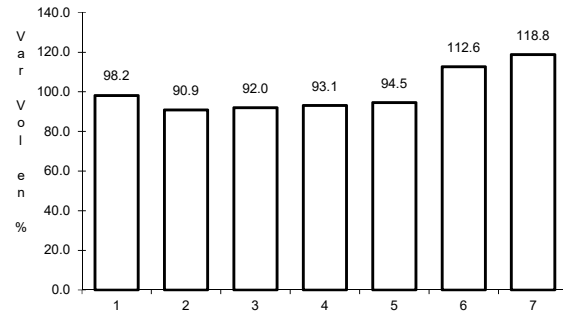
RUTA: DGO-316



Km: 0.00

Tipo: 3

Sent: 0



Km: 22.00

Tipo: 1

Sent: 0

