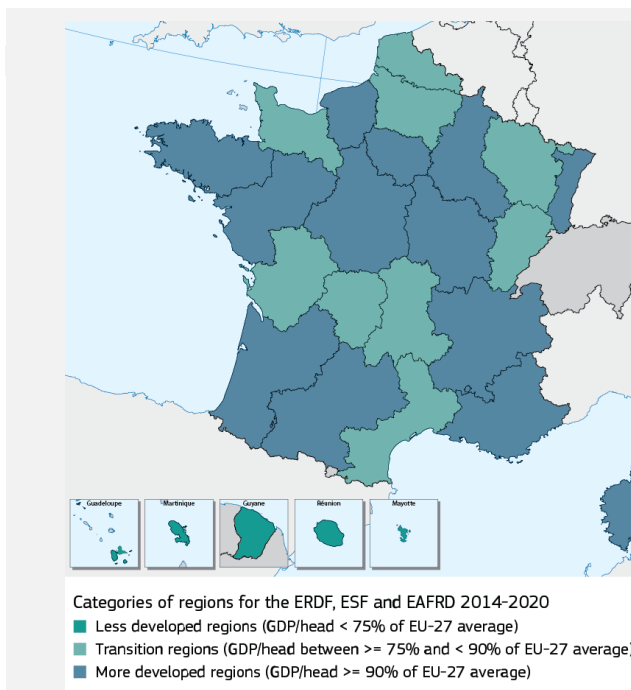


# EUROPEAN STRUCTURAL AND INVESTMENT FUNDS<sup>1</sup>



## FRANCE

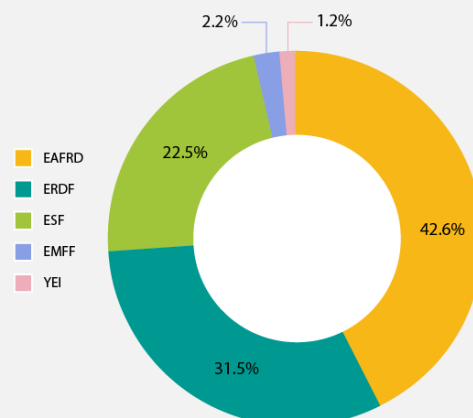
With a budget of EUR 454 billion for 2014-2020, the European Structural and Investment Funds (ESI Funds) are the European Union's main investment policy tool. The ESI Funds combine five Funds: European Regional Development Fund (ERDF); European Social Fund (ESF); Cohesion Fund (CF); European Agricultural Fund for Rural Development (EAFRD); and the European Maritime and Fisheries Fund (EMFF). France, together with 19 other Member States, will also benefit from the Youth Employment Initiative (YEI).



Through 83 national, interregional and regional programmes, France has been allocated EUR 26.73 billion from ESI Funds over the period 2014-2020. With a national contribution of EUR 19.04 billion, France has a total budget of EUR 45.77 billion to be invested in various areas, from creating jobs and growth to boosting the shift to a low-carbon economy as well as support for SMEs' competitiveness and strengthening research and development in an innovation-friendly business environment.

## ESI FUNDS BUDGET FOR FRANCE (2014-2020)<sup>2</sup>

- EUR 11.38 billion through the EAFRD
- EUR 8.43 billion through the ERDF
- EUR 6.03 billion through the ESF
- EUR 588 million through the EMFF
- EUR 310 million through the YEI



<sup>1</sup> Data included in this factsheet have been extracted from the ESIF Open Data platform which is accessible online at <https://cohesiondata.ec.europa.eu/>. Data on target achievements are based on officially agreed common indicators or, for the ESF, programme specific indicators (reference date for data: November 2015).

<sup>2</sup> Only those Member States with a gross national income (GNI) per inhabitant of less than 90 % of the EU average benefit from the Cohesion Fund. As such, France is not eligible to benefit from the Cohesion Fund.

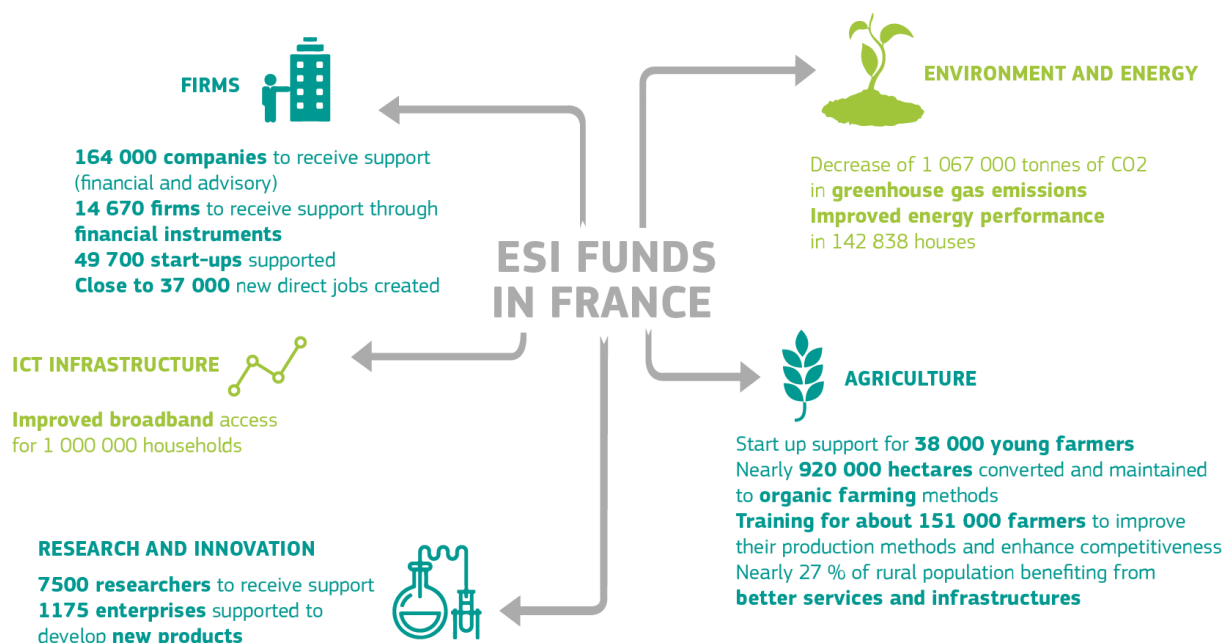
## MAIN PRIORITIES AND TERRITORIAL TOOLS

### ESI FUNDS IN FRANCE WILL:

- Strengthen **research and technological development** and innovation whilst enabling the accessibility, use and quality of information and communication technologies.
- Support **SMEs** (including in the agricultural, fisheries, and maritime aquaculture sectors) by giving businesses better access to **finance** and enabling them to produce **high-value goods and services**.
- Promote **employment, social inclusion, combat poverty** and support **labour mobility**. There will be a strong focus on the integration of **young people** via the YEI and encouraging people to start a business.
- Protect the environment by supporting the shift to a **low-carbon economy**, including investments in **energy efficiency** by developing **renewable energies** and **clean urban transport**, and by supporting agricultural production methods that are more respectful of natural resources.
- Enable the use of financial instruments to support **ICT and resource efficiency**.
- Facilitate the development of cities through integrated actions for **sustainable urban development** and support bottom-up development strategies in rural areas.

### TARGETS

All funds are designed to support France's socio-economic development. The expected results (targets) give an overall view of where France should be on key parameters by 2020.



### HOW WILL FRANCE ACHIEVE THE EXPECTED RESULTS?

France will work towards the efficient spending of the EU Funds, based on a multidimensional approach.

### FULFILLING PRECONDITIONS FOR THE EFFECTIVE AND EFFICIENT USE OF ESI FUNDS

To ensure that ESI Funds are used efficiently and focus on results, the Commission has set some preconditions when allocating ESI Funds to the Member States.

The main purpose of these conditions, also called '*ex-ante* conditionalities', is to help all Member States and their regions to tackle issues that past experience has shown to be particularly relevant to the efficient implementation of the Funds. These principles could be linked, for example, to implementation of EU legislation, the financing of strategic EU projects, or administrative evaluation and institutional capacity.

These *ex-ante* conditionalities cover most investment areas: improvements to regional research and innovation (R&I) strategies as well as strategic plans linked to environmental protection, energy resources, transport, socio-economic inclusion, health services, education and training.

## ENCOURAGING THE USE OF FINANCIAL INSTRUMENTS AND TERRITORIAL TOOLS

- France will triple the volume of loans, venture or equity capital aimed in particular at SMEs and energy efficiency.
- Financial instruments to support ICT and resource efficiency should be explored.
- Sustainable urban development will be promoted through integrated actions to facilitate the development of cities.
- EAFRD will continue to support bottom-up development strategies in rural areas shared with LEADER initiative.

## SIMPLIFICATION FOR BENEFICIARIES

Reduction of administrative burden for beneficiaries include the increased use of single payments, simplified cost option for reimbursing expenditure, streamlining process, ensuring the consistency of measures and increasing the visibility of EU added value.

## SUCCESS STORIES: EXAMPLES OF PROJECTS USING 2007-2013 ESI FUNDS

### MONT-SAINT-MICHEL TARGETS ECOTOURISM

Plans to refocus on Mont-Saint Michel's maritime aspect are being implemented today, with new emphasis placed upon the area's architectural heritage and natural environment. Increased biodiversity, a focus on high-quality tourism and sustainable economic development are the priorities of this enormous project.

The first phase of the project (2000-2006) focused on the building of a dam on the river Couesnon, deepening the seabed and lowering the level of the shingle beaches. The second phase (2007-2013) involved the construction of river embankments and a 770 000 m<sup>3</sup> basin in the bay area itself, and in the access area to the Mont. The causeway and the car park located at the foot of the abbey have been removed and access is now via a new bridge on the seaward side, along with a 756 metre long pedestrian footbridge. The bridge will be used exclusively for shuttle buses and horse-drawn carriages and will put an end to the pollution caused by traffic and parking of vehicles at the foot of the Mont.

Total budget: EUR 210 600 000

EU budget contribution to the project from ERDF: EUR 10 031 150

More information: <http://europa.eu/!WK66Yp>

### NEW PUBLIC TRANSPORT NETWORK IN MARTINIQUE

A two-way, 14 kilometre-long road has been designed for optimisation of service road and intercity accessibility. The purpose is to counteract traffic congestion between two major cities – Fort-de-France and Lamentin – and reduce the region's carbon footprint. The project had far-reaching economic and social impacts and improved traffic conditions for about 70 % of Martinique's population, around 274 000 people. Moreover, the new installation will reduce travel time by approximately 15 minutes. The 'Transport Collectif en Site Propre de Martinique Phase II' (TCSP), which is encouraging car users to switch to the public transport system, created 2000 jobs during the construction work.

Total budget: EUR 317 557 914

EU budget contribution to the project from ERDF: EUR 66 200 000

More information: <http://europa.eu/!Fx88tQ>

### BOTTOM-UP LOCAL DEVELOPMENT STRATEGIES IN BURGUNDY (LEADER)

The local development strategies of nine LEADER local action groups were supported in Burgundy. Nearly 540 local projects were developed in very different areas, such as improving services for the rural population, protection and enhancement of cultural and natural heritage of villages, fostering rural tourism, and developing micro-enterprises.

Total budget: EUR: 45 600 000

EU budget contribution to the project from EAFRD: EUR 13 600 000

More information: <http://www.territoires-bourgogne.fr/>

## GIVING YOUNG PEOPLE THE CONFIDENCE TO PROSPER

Long-term unemployed young people in the Limousin region of France have received guidance to help them get into the jobs market or find suitable training options. The SAS project was aimed at people under 26 years who had been looking for a job for more than one year. The project offered a three-month programme designed to instill confidence and increase personal motivation, the goal being to develop teamworking skills. Participants were also encouraged to learn about different fields of work and to actively find out more by contacting local businesses and chambers of commerce. Throughout the process, SAS offered coaching and provided information about training options. The project also gave each participant a grant of EUR 340 per month for the duration of the course, plus EUR 300 in expenses.

Total budget: **EUR 940 000**

**EU budget contribution** to the project from ESF: **EUR 224 000**

More information: <http://europa.eu/lqg78xG>

## WOMEN, EQUALITY AND EMPLOYMENT: THE FIGHT AGAINST DOUBLE DISCRIMINATION

Women from other countries who are looking for a job have to face two problems: combating both the stereotypes linked to their nationality as well as those linked to their gender. FETE (Women, Equality, Employment), a collective interest cooperative company, helps women in this situation in the Burgundy region to find jobs, and fights against discrimination in recruitment. The women are offered services such as coaching sessions, thematic meetings and employer sponsorship programmes.

Total budget: **EUR 180 3160**

**EU Budget contribution** to the project from ESF: **EUR 71 761**

More information: <http://europa.eu/lCM79wF>

## ARTIFICIAL REEFS TO PROTECT PRADO BAY SEABEDS IN MARSEILLE

Prado Bay has long been the victim of progressing silting. Sand covered the natural reefs, endangering the habitats of many animal and plant species. This project built some 401 artificial reefs of up to 30 m deep, over an area of 220 ha.

Total budget: **EUR 4 740 000**

**EU budget contribution** to the project from EFF: **EUR 1 814 038**

(During the 2007-2013 period, the EMFF was known as European Fisheries Fund or EFF)

<http://bit.ly/1XFsj9u>

## FIND OUT MORE ABOUT ESI FUNDS IN FRANCE

- ESI Funds: <http://ec.europa.eu/esif>
- ESI Funds Open Data Platform: <https://cohesiondata.ec.europa.eu/countries/FR>
- ERDF: [http://ec.europa.eu/regional\\_policy/en/atlas/france](http://ec.europa.eu/regional_policy/en/atlas/france)
- ESF: <http://ec.europa.eu/esf/main.jsp?catId=380&langId=en>
- YEI: <http://ec.europa.eu/social/BlobServlet?docId=13468&langId=en>
- EAFRD: [http://ec.europa.eu/agriculture/rural-development-2014-2020/country-files/index\\_en.htm](http://ec.europa.eu/agriculture/rural-development-2014-2020/country-files/index_en.htm)
- EMFF: [http://ec.europa.eu/fisheries/cfp/emff/doc/op-france-fact-sheet\\_en.pdf](http://ec.europa.eu/fisheries/cfp/emff/doc/op-france-fact-sheet_en.pdf)
- The EU Representation in France: [http://ec.europa.eu/france/index\\_fr.htm](http://ec.europa.eu/france/index_fr.htm)
- EU project examples: [http://ec.europa.eu/budget/euprojects/search-projects/list\\_en](http://ec.europa.eu/budget/euprojects/search-projects/list_en)
- Follow us on Twitter: @EU Regional @EU Social @EU Agri @EU Mare #ESIFunds