

Note -
Painting - by Mfg.
Signals and all metal surfaces exposed to the weather shall have shop coat of red lead. Relay houses and instrument cases to have shop coat of red lead and two coats of aluminum paint on outside surface. Inside of houses and instrument cases to have shop coat of red lead between steel and lining and after lining is installed the interior including all shelves and supports to be painted with aluminum paint.

Note -
Painting - by Railroad.
Inside of all signal masts must be swabbed with raw linseed oil and thoroughly set before installing.
All instrument cases and cable terminal boxes must have a spotting coat and final coat of aluminum paint inside and out.
Signal face and hood to be painted dead black.
All other metal surfaces must have spotting of priming paint where required and two coats of aluminum paint.
Foundations to be natural finish.

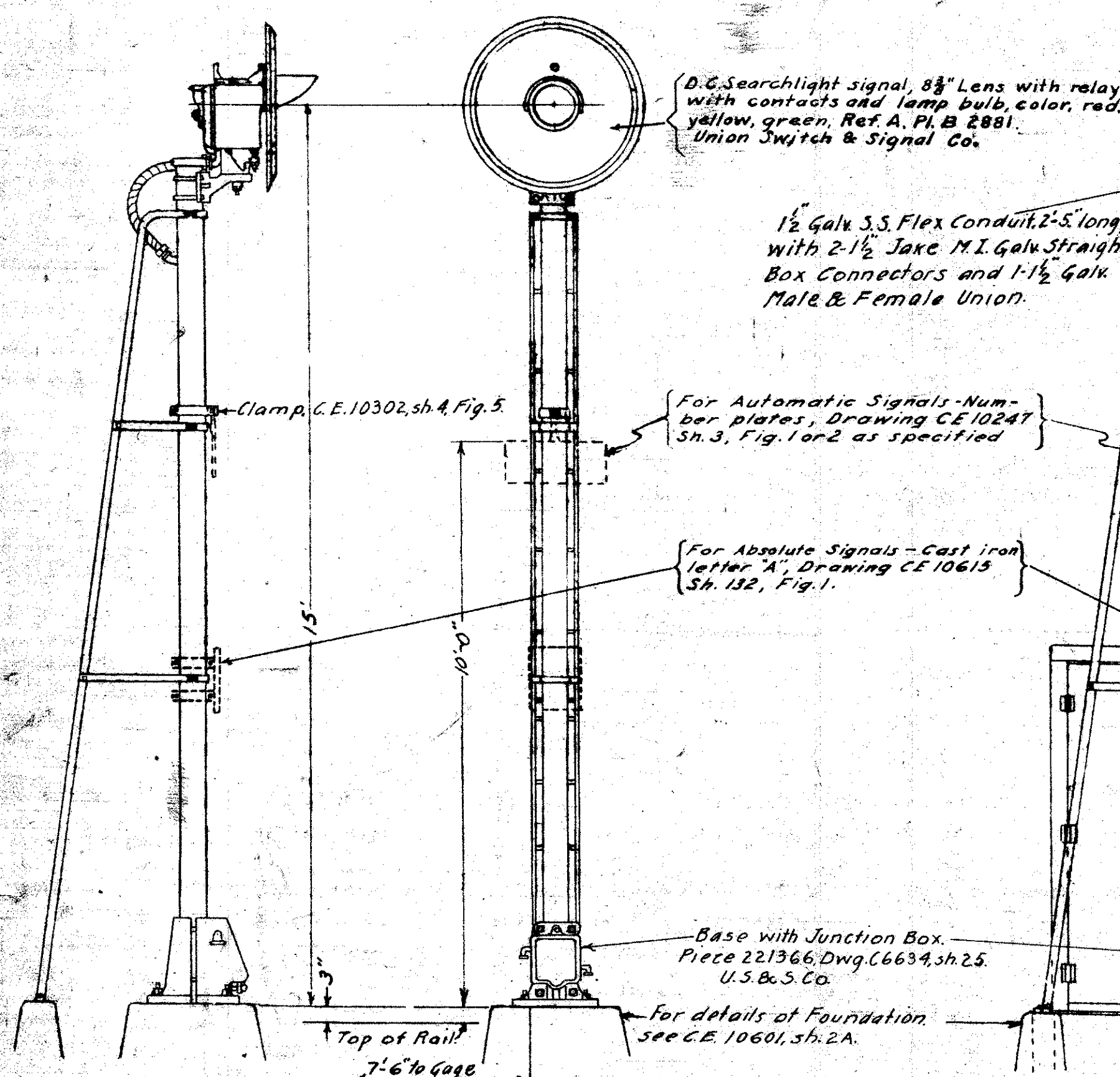


FIGURE 1.
SEARCHLIGHT SIGNAL WITH
JUNCTION BOX BASE.

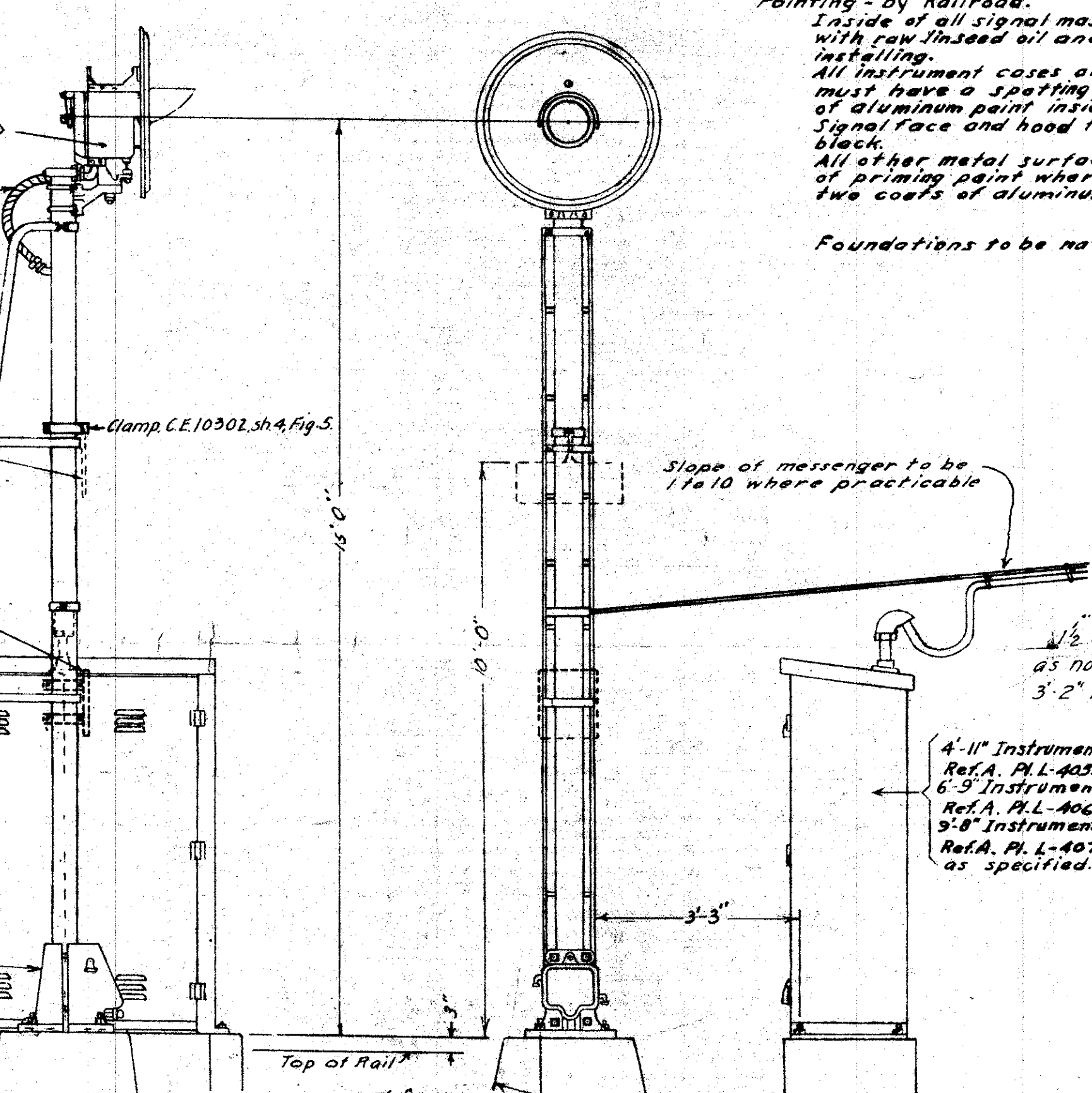


FIGURE 2.
SEARCHLIGHT SIGNAL WITH SHEET
STEEL INSTRUMENT CASE.

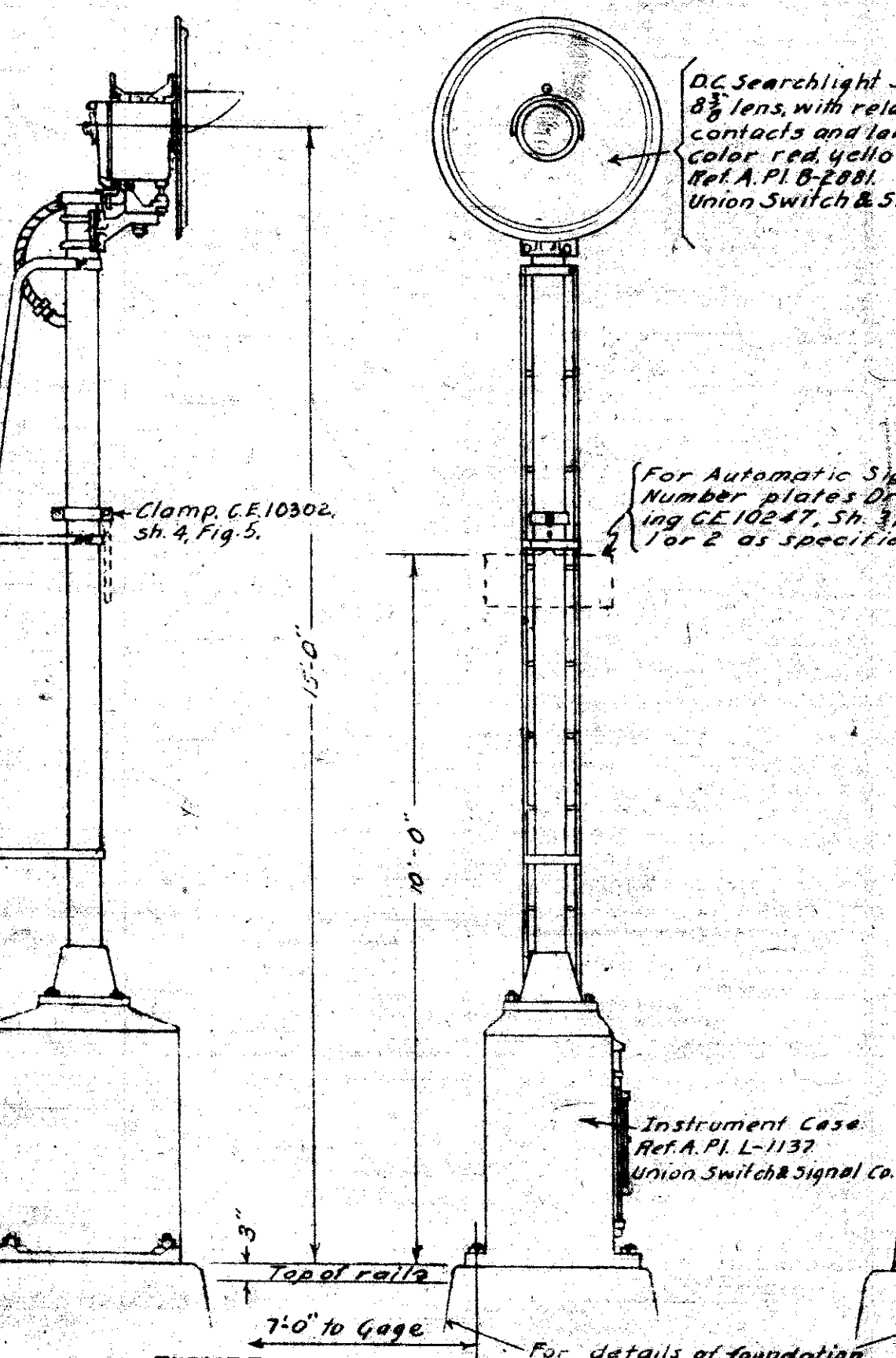
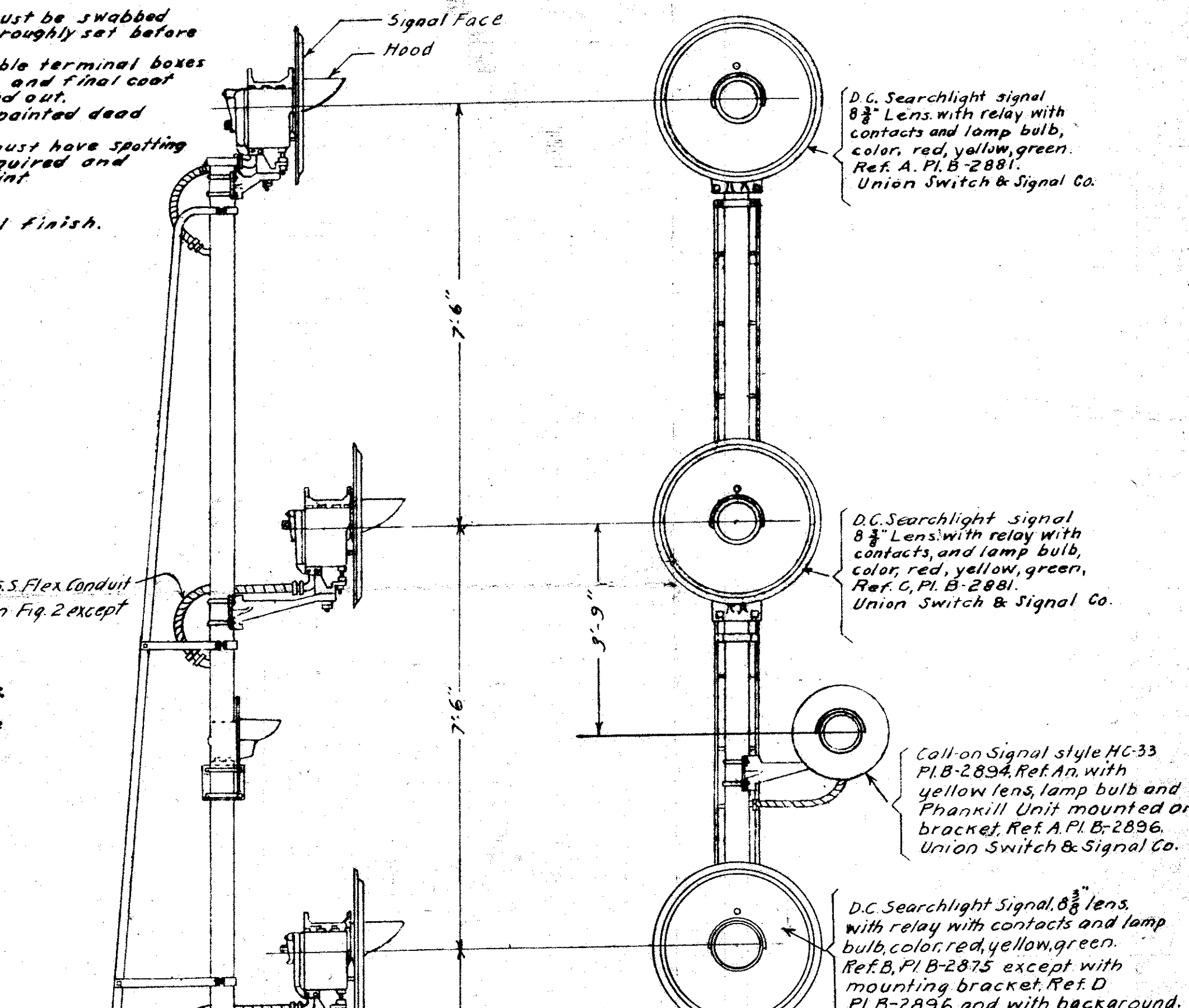


FIGURE 3.
SEARCHLIGHT SIGNAL ON
SINGLE INSTRUMENT CASE.

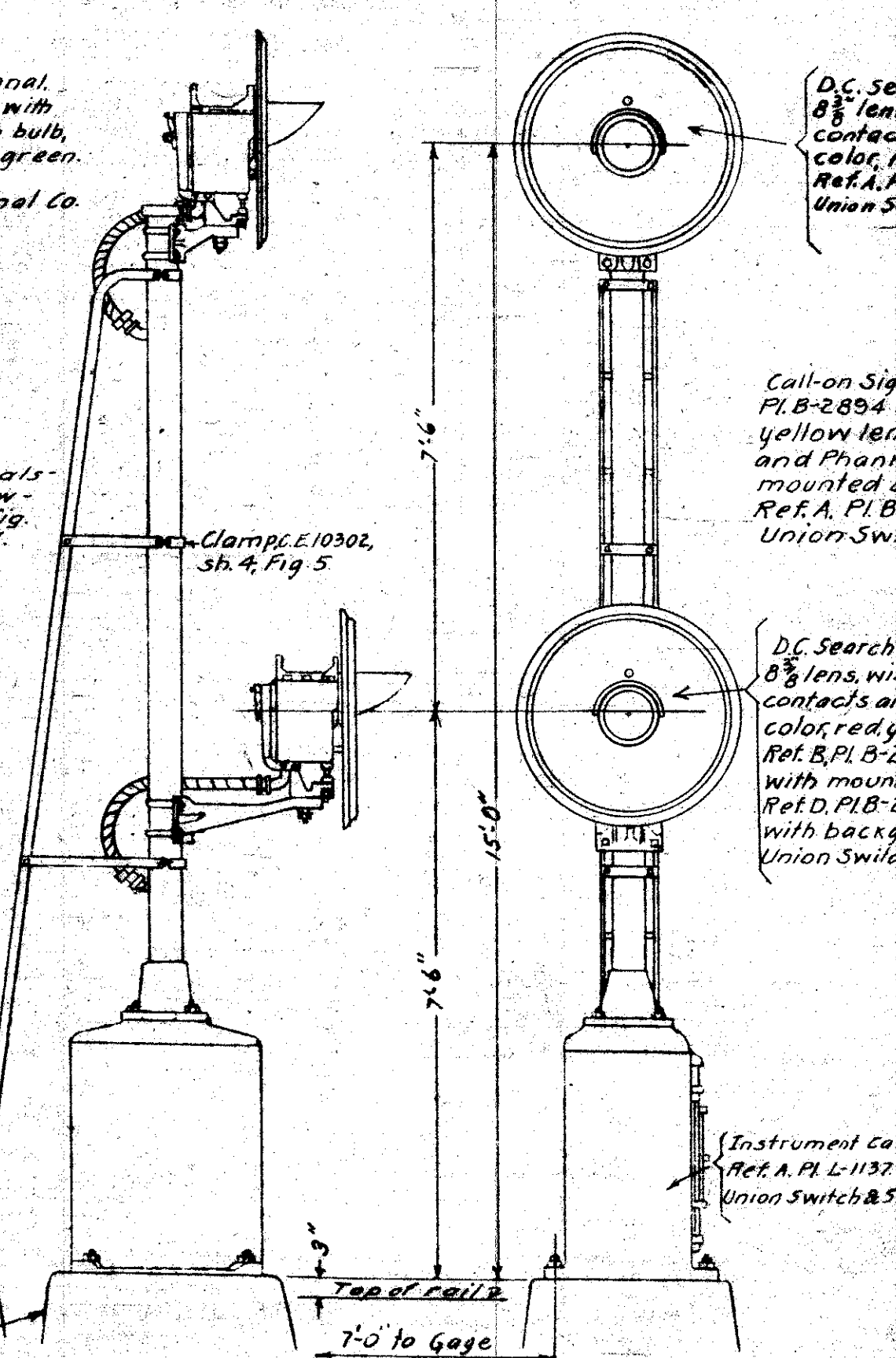


FIGURE 4.
SEARCHLIGHT SIGNAL WITH ROUTE SIGNAL
ON SINGLE INSTRUMENT CASE.

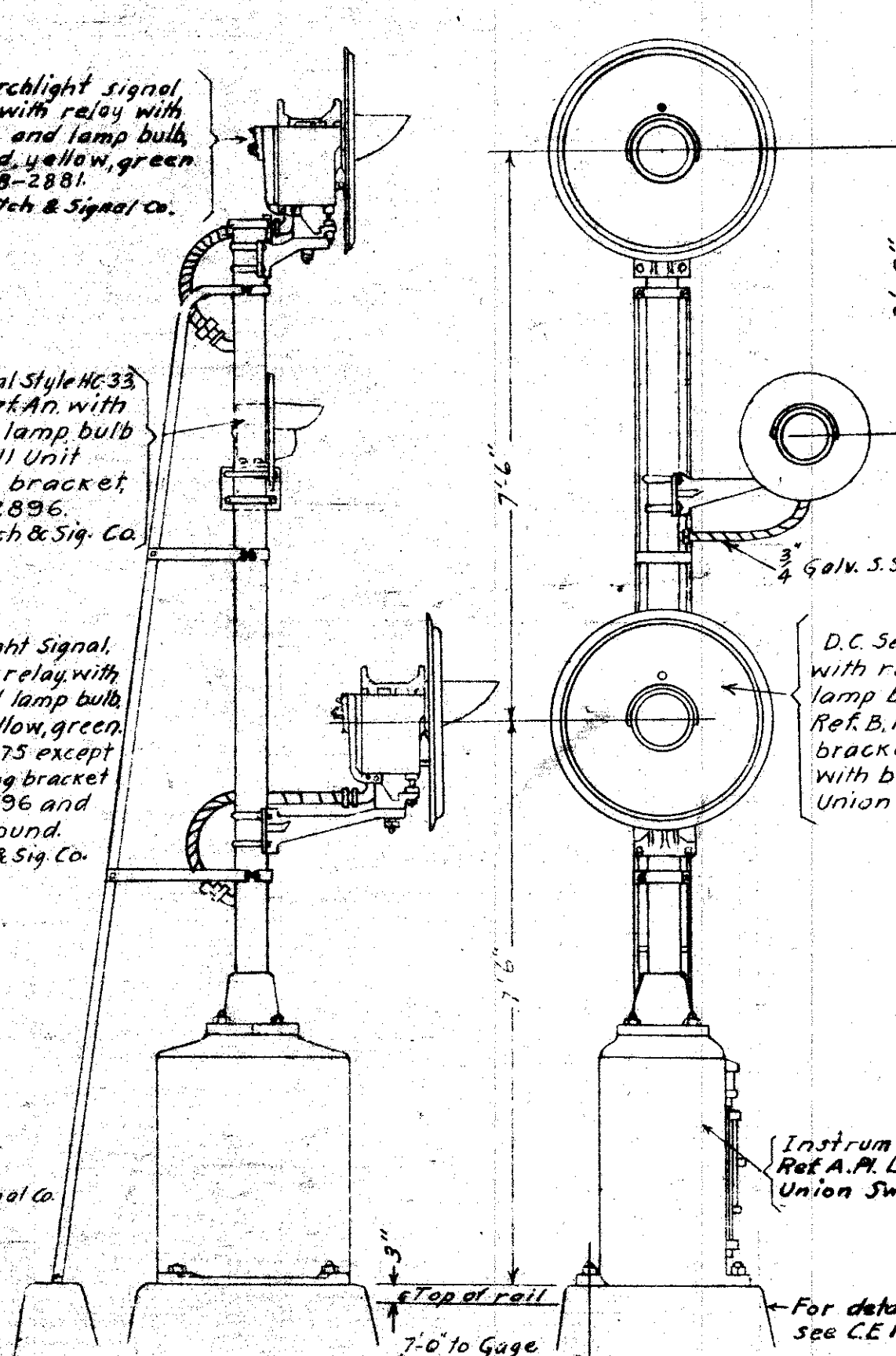


FIGURE 5.
SIGNAL ASSEMBLY WITH ROUTE SIGNAL AND
CALL ON SIGNAL ON SINGLE INSTRUMENT CASE.

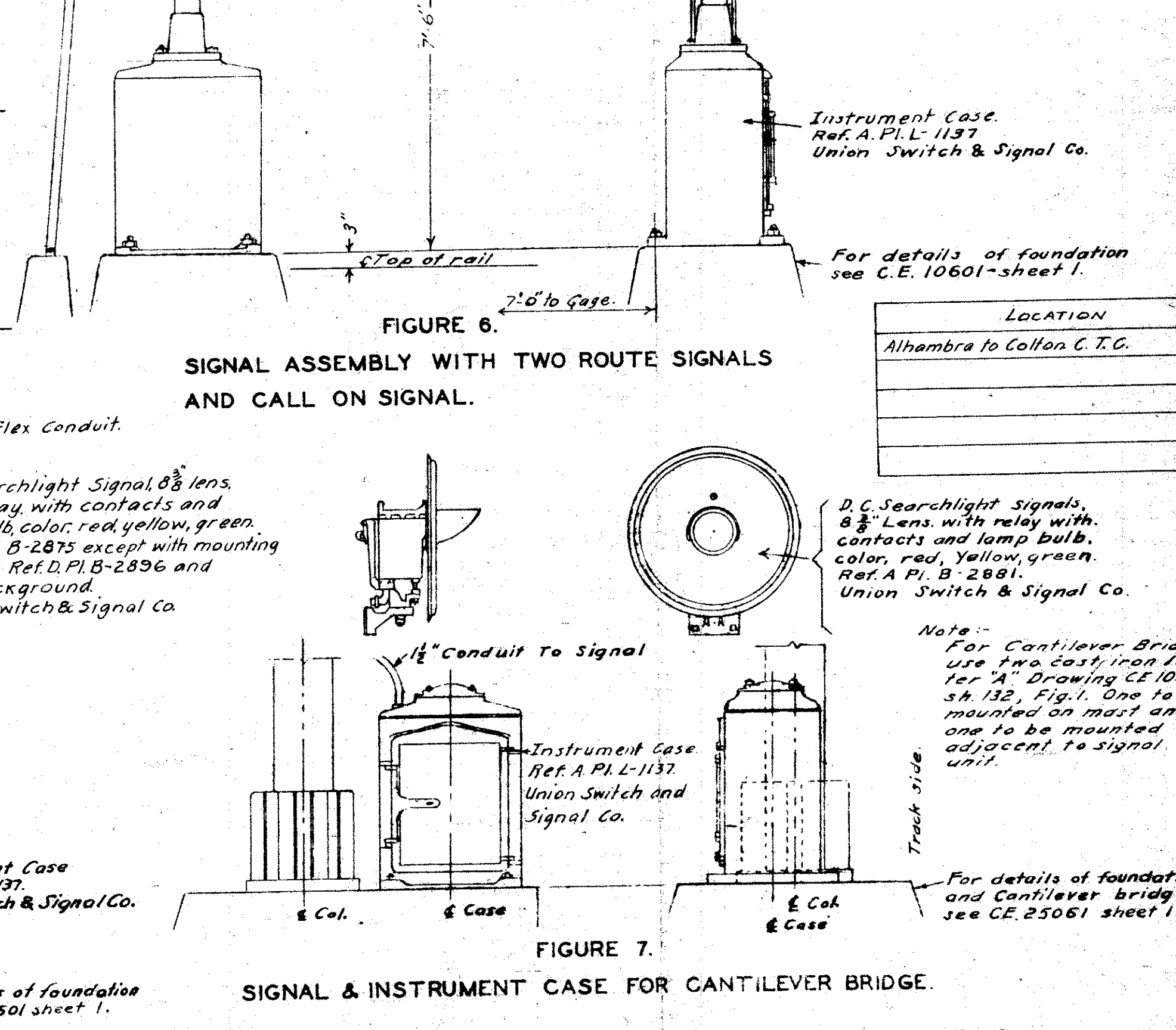


FIGURE 6.
SIGNAL ASSEMBLY WITH TWO ROUTE SIGNALS
AND CALL ON SIGNAL.

LOCATION
Alhambra to Colton C.T.C.

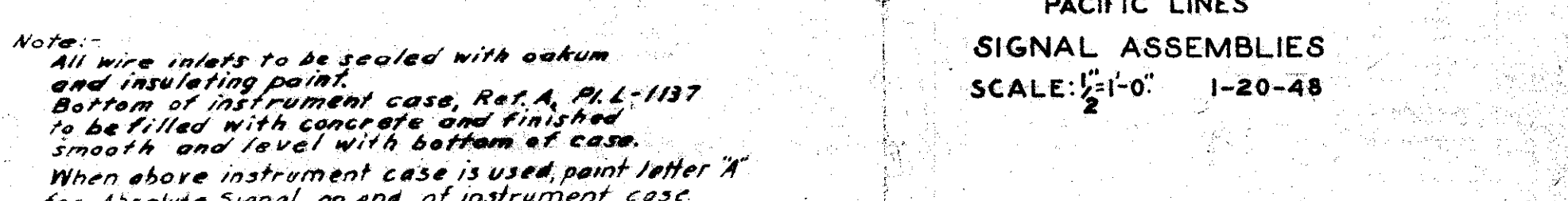


FIGURE 7.
SIGNAL & INSTRUMENT CASE FOR CANTILEVER BRIDGE.

Note -
All wire inlets to be sealed with oakum and insulating paint.
Bottom of instrument case, Ref. A, Pl. L-1137 to be filled with concrete and finished smooth and level with bottom of case.
When above instrument case is used, paint letter 'X' for Absolute Signal on end of instrument case.

SOUTHERN PACIFIC COMPANY
PACIFIC LINES
SIGNAL ASSEMBLIES
SCALE: 1/2"=1'-0" 1-20-48