

Volume 68 (2)  
December 2013

ISSN 0113-4132

# Auckland Botanical Society



# Journal

**Auckland Botanical Society  
Journal**

**Vol 68 (2)**

Editors:  
Mei Nee Lee & Joshua Salter  
[meineelee@yahoo.co.nz](mailto:meineelee@yahoo.co.nz)

**December 2013**

**ISSN 0013-4132**

Secretary: Kristy Hall  
PO Box 26391, Epsom,  
Auckland, New Zealand

---

**Contents**

**Alan Mere award 2013:**

John Braggins receives the Allan Mere Award for 2013 ..... Ewen Cameron 113

**Field trips:**

Raventhorpe Scenic Reserve and Mill Road private reserve, Bombay, 18 May 2013 ..... Jennifer Shanks 114

Flora of Dingle Dell Reserve, St Heliers  
..... M. Wilcox, E. Cameron, J. Braggins, J. Beever, D. Blanchon, R. Kooperberg & C. Shirley 118

Field trip report, Waionui Inlet, Kaipara South Head, 17 August 2013 .....David Wilson 133

**General articles:**

Motukaha – the vascular flora of a small island off western Waiheke Island, Hauraki Gulf  
..... Ewen K. Cameron 136

A Tale of Two Stipules ..... Rhys Gardner 147

*Coprosma* (Rubiaceae) in Samoa ..... Rhys Gardner 149

Auckland's long-awned brome grasses (*Bromus* species, Poaceae) ..... Rhys Gardner 150

*Barleria repens* Nees (Acanthaceae) on the southern Queensland coast ..... Ewen K. Cameron 152

Rangitoto Wilding Pines Update ..... Steve Benham 154

The 23rd NZ Fungal Foray, Waikanae, May 2009 ..... Petra White 156

Huia hunting and other escapades – remembering John Kendrick ..... Peter de Lange 166

Corrigenda for Auckland Botanical Society Journal – June 2013 issue: Vol. 68 (1) ..... 169







Fig. 2. Gully forest of kohekohe, karaka and mahoe, 23 Feb 2012, Mike Wilcox.

#### BioBlitz 30 April – 1 May 2004

The first Auckland BioBlitz was held in the Auckland suburb of St Heliers on 30 April – 1 May 2004 during very wet weather. In a remnant of native forest at Dingle Dell reserve, 925 separate species (all organisms) were found (including 241 vascular plant species), and 631 species (including 262 vascular plant species) were found in a native bush gully at Meadowbank Primary School. The higher plants survey was led by Ewen Cameron, with assistance from Mei Nee Lee, Leslie Haines, Jenny Lux, Elaine Marshall and Joshua Salter. Lists were compiled of mosses (Jessica Beever), liverworts (John Braggins), lichens (Dan Blanchon, Carol Elliott and Rick Kooperberg), and fungi (Peter Buchanan, Peter Johnston, Eric Mckenzie and Nick Waipara).

#### Bot Soc visit, 20 July 2013

Those present were Chris Ashton; Romily Atkinson; Dan Blanchon; John Braggins; Colleen & Warren Brewer; Jan Butcher; Ewen Cameron; Neil Davies; Gael Donaghy; Anna Gavin; Leslie Haines; Peter Hutton; Graeme Jane; Rick Kooperberg; Tim, Annabelle and Shepard Martin; Michelle Moloney; Vivienne Paterson; Juliet Richmond; Clive Shirley; Vijay Soma; Nathaniel Su; Harold Waite; Alison Wesley; Mike Wilcox (leader); David and Helen Yang. The group thoroughly checked out all parts of the reserve, noting additions to the plant lists (Fig. 3).

#### Fungi & Myxomycetes

This year the Auckland region has had a poor fungi season. Whether or not this was due to the drought this past summer is not known. As expected, fungi present in July 2013 were very few; those found being mostly on decaying wood (Fig. 4) or on the decaying fronds of the nikau palms. A little brown mushroom was found in association with *Kunzea ericoides*. While the fungi have been very sparse this season the same cannot be said for myxomycetes which were very abundant. The visit to Dingle Dell on 20 July 2013 proved to be very successful with 15 species being found (see Appendix).

#### Lichens

The lichen flora of Dingle Dell is an interesting mix of urban lichens (i.e. forest edge species), humid native forest species and lichens characteristic of coastal forest. Some of the common species in Dingle Dell, such as *Parmotrema perlatum* and *P. reticulatum*, *Ramalina celastri* and *Usnea rubicunda* are also found in high light situations in urban gardens and on street trees. Some humid forest species such as *Coenogonium implexum* and *Porina exocha* were reasonably common on trunks of karo and kohekohe, but the forest interior had a fairly poor selection of lichens, possibly due to the sparse understory of the forest. Coastal forest species found at Dingle Dell include *Crocodia aurata* and *C. poculifera*, *Heterodermia japonica* and *H. obscurata*, *Pannaria elixii* and *Usnea nidifica*. Several of the species at the reserve, such as *Parmotrema austrocetratum*, *Lobarina scrobiculata*, *Sclerophora sanguinea* and *Graphis elegans* are not commonly seen in urban Auckland.

None of the species we found are considered to be endangered, although some are listed by de Lange et al. (2012) as 'At Risk', including a number that are 'Naturally Uncommon', such as *Crocodia poculifera*, *Parmotrema subtinctorium*, *Pseudocyphellaria wilkinsii*, *Teloschistes sieberianus* and *Usnea nidifica*. Species such as *Buellia demutans*, *Graphis elegans*, *Heterodermia microphylla* and *Sclerophora sanguinea* are listed as 'Data Deficient'. The most important substrate tree species were *Cordyline australis* (Fig. 5 & 6), *Dacrycarpus dacrydioides*, *Kunzea ericoides* and *Quercus* species. The original count of lichen species from the 2004 BioBlitz was 45, and collections from the recent Botanical Society trip has brought the total to 55.

#### Liverworts

A preliminary list of liverworts was made in 2004 as part of the BioBlitz centered on the area. At the time of this work the weather was at best unkind and the frequent heavy rain made collecting and identifying difficult. Two subsequent visits in 2013, and some other collecting, have resulted in a better picture of

the liverworts of this urban site. The list of species is limited, only 21 having been identified at this time.

Among the more obvious liverworts are *Lunularia cruciata* which is common along the stream banks and open areas between the grassed flats and the bush margin. This is a thalloid liverwort, the plant body not having leaves, whereas most liverwort species are both smaller and leafy. It is also one of two introduced liverworts and is a common weed on pot plants.

Other liverworts that form quite large patches are *Chiloscyphus semiteres* found here on the bases of trees in the open. This is one of the toughest liverworts we have and persists even when totally dried up each summer. It has two rows of similar leaves, one on each side of the stem, and smaller different ones along the stem underside.

*Heteroscyphus supinus* has the same leaf arrangement, and somewhat similar leaves to the last species, but forms sizeable patches on soil or clay, especially on low banks.

On tree trunks we get a range of tiny species of *Lejeunea* and larger related ones such as *Archilejeunea*, the latter particularly on more shaded trunks. Also here in damp sites we get the largest of the liverworts in Dingle Dell, *Plagiochila arbuscula*, sometimes almost completely feathering tree trunks (Fig. 7). On more exposed trunks *Frullania* species, which may be dark red, are most common along with the thalloid (leafless) *Metzgeria*.

In general the range of species is limited and many are not all that common, often being confined to particular areas of the reserve. However, as the site has several more or less permanent streams and forest of considerable stature, the range and number of species may be increasing.

#### Mosses

Forty-one moss species were found in Dingle Dell during the BioBlitz of 2004. In 2013 more precise identifications were obtained for mosses in three genera, *Hypopterygium*, *Racopilum* and *Weissia*, and two additional species were recorded. The additional species were *Zygodon menziesii*, growing on a rock wall, and a species of *Trachyloma*, growing as an epiphyte. It is possible that these two taxa were overlooked in 2004; no other changes were noted in the moss vegetation. Indeed, the somewhat ephemeral monotypic endemic moss, *Bryobeckettia bartlettii*, was still present where it had been found 9 years previously. The moss was growing lightly shaded on bare soil, at the margin of the planted native shrubbery along the stream bank, in the lower part of the reserve. A.J. Fife (pers. comm., 10 Sep 2013) describes the habitat of this endemic moss as being "On damp, often recently disturbed soil of various textures, often at the margins of streams or

drainage ditches". Signs of recent flooding at Dingle Dell, and the abrupt margin between the bare soil and the adjacent lawn (indicative of weedicide treatment), suggest that suitable conditions for the moss are currently being maintained. There are scattered records of *B. bartlettii* from Whangarei to Southland on the New Zealand mainland (data from herbaria AK and CHR, Sep 2013), and it was found on Pitt Island during the Auckland Botanical Society trip to the Chatham Islands in 2007. There, it was growing on compacted soil, with the exotic moss *Eurhynchium praelongum*, at the entrance to an aviary in the Ellen Preece Reserve. In the Tamaki Ecological District we know of no records other than those at Dingle Dell. Bryophytes associated with *B. bartlettii* at Dingle Dell were *Lunularia cruciata*, *Tortula truncata*, *Calliergonella cuspidata*, *Dicranella* sp. (probably *D. jamesonii*), and a species of *Bryum*.

Two conspicuous mosses on shaded soil in the reserve were *Racopilum robustum* (Fig. 8) and *Fissidens taxifolius*. *Racopilum robustum*, an endemic species, formed luxuriant mats on thin soil over rock, on gravel washings from a path, and on the vertical cut banks at track edges. A further substrate it had colonised was well-weathered timber forming part of a track support. *Racopilum robustum* grew in association with *Fissidens leptocladus*, with the liverwort *Heteroscyphus supinus*, and with a more slender species of *Racopilum*, probably *Racopilum strumiferum* (which was identified to species level from fertile material elsewhere in the Reserve). *Fissidens taxifolius* is an invasive introduced species which is very common in Auckland City.

In the lower part of the reserve *Tortula muralis* was common on concrete and mortar of rock walls, growing sometimes with *Thuidiopsis sparsa*. Found on the rock itself, were the diminutive *Zygodon menziesii*, several species of *Bryum* (including *Bryum capillare*) and *Weissia controversa* var. *gymnostoma*, living up to its common name of 'Petrie's wall moss'. This common name was acquired because the type specimen, sent to H.N. Dixon in England, was collected by Donald Petrie from "stone walls, Auckland suburbs, New Zealand" (*in herb.*), where, "judging from considerable material sent me .... it would appear to be very common in the neighbourhood of Auckland" (Dixon 1923).

Another moss common in Auckland City, found in the Reserve, is a species of *Hypopterygium*, tentatively identified as *H. tamarisci* (Fig. 9). Although we have access to a very detailed monograph of the family *Hypopterygiaceae* by H. Kruijer (2002), which includes many New Zealand specimens, we still have difficulty in identifying our local species. As well as being found on shaded, sloping, soil banks, *Hypopterygium* was seen in an unusual situation, on the trunk of a large nikau



(*Rhopalostylis sapida*), where it grew with *Racopilum* sp. and the liverworts *Archilejeunea olivacea* and *Plagiochila arbuscula*.

The Bryophyte Report for the 2004 BioBlitz (J.E. Beever & J.E. Braggins unpub.) noted that forest mosses were well represented in the list for Dingle Dell; these included the umbrella moss *Mniodendron colensoi* (formerly *Hypnodendron colensoi*), and epiphytes such as *Orthorrhynchium elegans*, two species of *Papillaria*, and three species of *Macromitrium*. To these can now be added a species of *Trachyloma*. All are indicative of mature native forest. Although they may have survived as relics from the original gully flora, all can produce spores and/or gemmae, and may thus have colonised the Dingle Dell Reserve during the regeneration of this urban forest remnant.

#### Lycophytes and ferns

The native fern flora has increased considerably to 28 species since the early list (19 species) compiled by Esson (1960). Not present then were *Lastreopsis microsora* and *L. glabella*, *Deparia petersenii*, *Diplazium australe* and *Pteris macilentata*, all now firmly established along the streams. Of considerable interest was the critically endangered fern *Christella dentata* (Fig. 10) growing fairly commonly along the main stream on the southern side (first recorded there by Peter de Lange in January 2013), and vigorous maturing plants of king fern (*Ptisana salicina*) thriving and regenerating in several places in the stream gullies on the western side. These latter two ferns were not recorded in the 2004 BioBlitz, and we suspect the king ferns had originally been planted. Other new discoveries made by our group on the day were *Tmesipteris lanceolata* and *Trichomanes venosum*. We found no sign of the previously recorded *Pellaea rotundifolia* (Esson 1960). Overall, the commonest ferns in the reserve at present are *Adiantum hispidulum* (Fig. 11), *Blechnum membranaceum*, *Cyathea dealbata*, *C. medullaris*, *Doodia australis*, *Lastreopsis glabella*, *L. microsora*, *Pneumatopteris pennigera*, *Pteris macilentata* and *Pteris tremula*. The only reasonably common climbing fern present is *Blechnum filiforme*.

Five adventives were noted. *Selaginella kraussiana* was commonly present in a number of places though by no means rampant; ladder fern (*Nephrolepis cordifolia*) has a localised foothold; *Adiantum raddianum* has established on banks beside some of the paths and creeks; *Pteris cretica* (Fig. 12) was common along the creeks in the open or where lightly shaded; and an Australian tree fern, *Cyathea cooperi* (Fig. 13), has become well established near the streams on the southern slopes and eastern (see Gardner (1994) for New Zealand's first wild record of this from Onehunga).

#### Native trees and shrubs

From the account by Esson (1960), and activities of the Tree Society, it is certain that the following native trees found in the reserve were planted: kauri (*Agathis australis*), rimu (*Dacrydium cupressinum*), totara (*Podocarpus totara*), tanekaha (*Phyllocladus trichomanoides*), kawaka (*Libocedrus plumosa*), pohutukawa (*Metrosideros excelsa*), Kermadec pohutukawa (*M. kermadecensis*), puriri (*Vitex lucens*) and rewarewa (*Knightia excelsa*). These plantings have done well. Totara have attained a diameter of 50 cm, with the other conifers in the 25-45 cm range. Esson also states that nikau was planted, although it is now abundant and regenerating freely along the main gullies and appearing natural (Fig. 14).

Other native trees or shrubs in the reserve that have been planted are tree daisy (*Olearia albida*), golden akeake (*O. paniculata*), whau (*Entelea arborescens*), ngaio (*Myoporum laetum*), broadleaf (*Griselinia littoralis*), puka (*G. lucida*), pukauui (*Meryta sinclairii*), pukatea (*Laurelia novae-zelandiae*), Elingamita johnsonii, swamp maire (*Syzygium maire*), kowhai (*Sophora microphylla*), wharangi (*Melicope ternata*) and *Pseudopanax discolor*. Lemonwood (*Pittosporum eugenioides*), karo (*P. crassifolium*) and kohuhu (*P. tenuifolium*) are common and are also most likely planted.

The dominant fully wild native trees present are kanuka and cabbage tree on the upper slopes and karaka, kohekohe and mahoe in the gullies. Rhys Gardner has studied the sexuality of kohekohe here and found most of them to be males (Gardner 2009). Many of the cabbage trees are large and moribund. One large kowhai may well be natural. Less common are pigeonwood, pate (*Schefflera digitata*), taraire and titoki (both mainly as seedlings). The main undergrowth shrubs are mapou, hangehange (*Geniostoma ligustrifolium*), kawakawa (*Piper excelsum*), houpara (*Pseudopanax lessonii*), lacebark (*Hoheria populnea*) and coastal karamu (*Coprosma macrocarpa*). Woody lianes are not very common here, the ones we noted being supplejack (*Ripogonum scandens*), bush lawyer (*Rubus cissoides*), pohuehue (*Muehlenbeckia australis*) and *Parsonsia heterophylla*. Perching epiphytes (such as *Astelia* and *Collospermum*) are notably absent.

Several species present earlier seem to have disappeared. Both Esson (1960) and Cranwell (1981) remark on *Fuchsia excorticata*, with Esson stating that it is found beside all the streams. That was some 55 years ago, and there is now no sign of it. Perhaps it has been over-topped and suppressed by other plants, or possibly it was wiped out by possums which are known to defoliate and kill tree fuchsia. Other plants listed by Esson which no longer



Fig. 3. Bot Soc members exploring the fringes of the grassed area, 20 July 2013, Mike Wilcox.



Fig. 4. Wood ear fungus (*Auricularia cornea*) on decaying mahoe, 15 June 2013, Mike Wilcox.

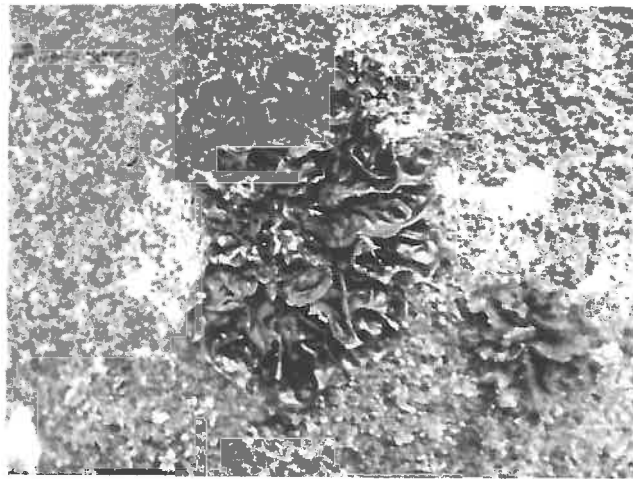


Fig. 5. *Collema kauaiense* on cabbage tree trunk, 15 June 2013, Mike Wilcox.

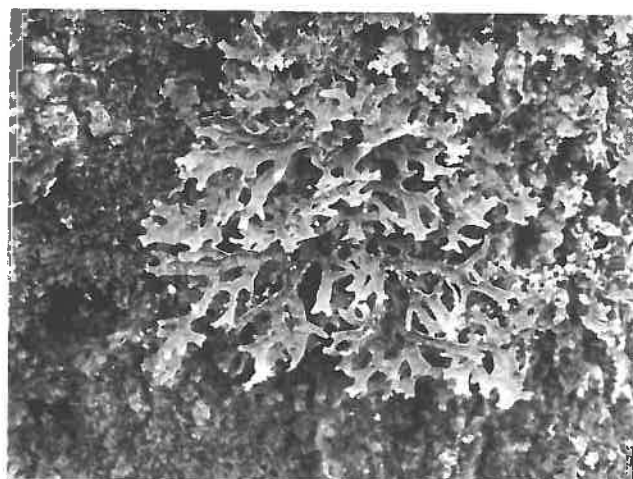


Fig. 6. *Pseudocyphellaria carpoloma* on cabbage tree trunk, 20 July 2013, Mike Wilcox.



Fig. 7. *Plagiochila arbuscula*, 13 June 2013, Mike Wilcox.



Fig. 8. *Racopilum robustum*, Dingle Dell, 19 August 2013, Mike Wilcox.





Fig. 9. *Hypopterygium tamarisci*, Dingle Dell, 13 June 2013, Mike Wilcox.



Fig. 10. *Christella dentata*, Dingle Dell, 20 July 2013, Mike Wilcox.



Fig. 11. *Adiantum hispidulum*, 19 Aug 2013, Mike Wilcox.



Fig. 12. *Pteris cretica*, Dingle Dell, 20 July 2013, Mike Wilcox.



Fig. 13. *Cyathea cooperi*, Dingle Dell, 19 Aug 2013, Mike Wilcox.



Fig. 14. Regeneration of nikau, Dingle Dell, 19 August 2013, Mike Wilcox.

seem to be present are akeake (*Dodonaea viscosa*), shining karamu (*Coprosma lucida*), akepiro (*Olearia furfuracea*), rangiora (*Brachyglottis repanda*), ramarama (*Lophomyrtus bullata*), milk tree (*Streblus heterophyllus*), kumarahou (*Pomaderris kumeraho*) and mingimingi (*Leucopogon fasciculatus*).

#### Exotic trees and shrubs

Hawthorn trees (*Crataegus monogyna*) occur in numbers in the bush on the eastern side of the reserve and are probably descendants of Major Bunbury's introductions (Esson 1960). Fringing the main grassed valley are fine individual planted specimens of black bean (*Castanospermum australe*), golden weeping willow (*Salix × sepulcralis* 'Chrysocoma') and Turkey oak (*Quercus cerris*), and also a group of Lombardy poplar (*Populus nigra* 'Italica'). There is a concentration of planted exotic trees on the western margin adjoining Fern Glen Road North, the most prominent being silver birch (*Betula pendula*), ginkgo (*Ginkgo biloba*), dawn redwood (*Metasequoia glyptostroboides*), Japanese cedar (*Cryptomeria japonica*), sawara cypress (*Chamaecyparis pisifera*), Sitka spruce (*Picea sitchensis*), camphor laurel (*Cinnamomum camphora*), pin oak (*Quercus palustris*), pedunculate oak (*Q. robur*), sweet gum (*Liquidambar styraciflua*), tulip tree (*Liriodendron tulipifera*), silver elm (*Ulmus minor* 'Variegata'), coral tree (*Erythrina × sykesii*) and English ash (*Fraxinus excelsior*). A number of Australian trees have also been planted in the reserve, namely Sydney blue gum (*Eucalyptus saligna*), narrow-leaved black peppermint (*E. nicholii*), bottlebrush (*Callistemon pallidus*), willow bottlebrush (*C. salignus*), black sheoak (*Allocasuarina littoralis*) and swamp sheoak (*Casuarina glauca*). A large monkey apple (*Syzygium smithii*) with unusually small leaves (identified as "var. minor") occurs deep in the bush and is probably planted.

On the Parkside Road margin is a grove of Dutch elm (*Ulmus × hollandica*) and individual specimens of Illawarra flame tree (*Brachychiton acerifolius*) and trident red maple (*Acer rubrum* var. *trilobum*). Other naturalised exotic shrubs and trees recorded included tree privet (*Ligustrum lucidum*), avocado (*Persea americana*), elaeagnus (*Elaeagnus × reflexa*), loquat (*Eriobotrya japonica*), queen of the night (*Cestrum nocturnum*), boneseed (*Chrysanthemoides monilifera*), hill cherry (*Prunus serrulata*) and woolly nightshade (*Solanum mauritianum*). Exotic creepers or climbers present are moth plant (*Araujia hortorum*), blue morning glory (*Ipomoea indica*), ivy (*Hedera helix*), climbing jasmine (*Jasminum polyanthum*) and honeysuckle (*Lonicera japonica*).

An interesting naturalised species found during the 2004 BioBlitz survey was camphor laurel (*Cinnamomum camphora*) seedlings (>30) on the NE-facing bush ridge (NW part of the reserve) under kanuka and planted gum trees. Seeds were

presumed to be brought in by birds because no adult plant was seen. It is a declared pest plant in eastern Australia where it replaces native vegetation and invades pasture and disturbed riparian systems. So far in New Zealand there have been only a few naturalised occurrences. In 2013 we could find no evidence that these 2004 Dingle Dell seedlings survived.

Three species of exotic palm have been planted: bangalow (*Archontophoenix cunninghamiana*), Canary Island date palm (*Phoenix canariensis*) and Chinese windmill palm (*Trachycarpus fortunei*). Two massive Canary Island date palms had recently been poisoned by drilling herbicide into the trunks – their wild seedlings were locally common.

#### Herbs, grasses and sedges

Most prominent were the sedges *Gahnia lacera* (which is pervasive), *Uncinia uncinata*, *Carex lambertiana*, and the grass *Oplismenus hirtellus*. The weedy exotic sedges *Cyperus eragrostis* and *Carex divulsa* were much in evidence, and Australian sedge (*Carex longibrachiata*) is also present. Veldt grass (*Ehrharta erecta*) is abundant on well-lit margins and stream banks. Climbing asparagus (*Asparagus scandens*), onion weed (*Allium triquetrum*) and wandering jew (*Tradescantia fluminensis*) are present but fortunately not abundant. Kikuyu grass (*Cenchrus clandestinum*) dominates the open grass field.

Various herbs are present on the reserve edges, beside the paths, and along the creeks. Native herbs include *Australina pusilla* (discovered there in Jan 2013 by Peter de Lange), *Dichondra repens*, parataniwha (*Elatostema rugosum*) – with several healthy colonies along the creeks, *Haloragis erecta*, and *Hydrocotyle moschata*. There is a long list of introduced herbaceous weeds, ones we noted as being particularly common during our visits (Jun-Sep 2013) being nipplewort (*Lapsana communis*), bittercress (*Cardamine hirsuta*), puha (*Sonchus oleraceus*), Indian strawberry (*Potentilla indica*), small herb Robert (*Geranium purpureum*) and horned oxalis (*Oxalis corniculata*).

The creek at the head of the grassed area has a small wetland supporting a patch of watercress (*Nasturtium officinale*), floating sweet grass (*Glyceria declinata*), swamp willow weed pepper (*Persicaria decipiens*), water purslane (*Ludwigia palustris*), creeping buttercup (*Ranunculus repens*), and native starwort (*Callitriche muelleri*).

#### Birds and Lizards

During BioBlitz in 2004 twelve bird species were recorded, mainly by John Innes († = birds also seen by the authors in 2013): black-backed gull, spotted dove (wrongly recorded as collared dove in 2004?)†, eastern rosella†, grey warbler†, tui†, fantail†,

silvereye, blackbird†, starling, mynat, dunnoek, and chaffinch†. Additional species seen by the authors during 2013: kereru, kingfisher and house sparrow. Two lizards were recorded during BioBlitz by Graham Ussher: copper skink (*Cyclodina aenea*) and ornate skink (*C. ornata*).

#### Concluding remarks

Dingle Dell has a surprisingly rich flora considering that it was once a rather degraded fragment of native vegetation, and has been artificially enriched by planting of native and exotic trees. Its main ecological interest is now on the future development of the native flora and vegetation. Mosses, liverworts and lichens are plentiful. So far there has been little natural regeneration of any of the native conifers planted there 50-60 years ago. However, seedlings

and saplings can be found of broadleaf trees such as puriri, karaka, taraire and kohekohe, and also nikau, so these are likely to predominate in the future. The ancient kanuka and cabbage trees exhibit declining health, but beneath them is a dense scrub forest of small trees such as lacebark, mapou and houpara. The rather open nature of much of the vegetation exposes the upper slopes to wind and drought, where hardy plants such as *Gahnia lacera*, *Doodia australis* and *Adiantum hispidulum* provide the main ground cover.

The narrow, steep-sided stream heads are still mostly kept bare by the scouring action of stormwater, but several species of fern have nonetheless colonised this unstable habitat.

#### References

- Cranwell, L.M. 1981: *The Botany of Auckland*. Auckland Institute and War Memorial Museum, Auckland.  
 de Lange, P.J.; Galloway, D.J.; Blanchon, D.J.; Knight, A.; Rolfe, J.R.; Crowcroft, G.M.; Hitchmough, R. 2012: Conservation status of New Zealand lichens. *New Zealand Journal of Botany* 50: 303-363.  
 Esson, M.M. 1960: A description of the vegetation of Dingle Dell Reserve, St Heliers Bay, Auckland. *Tane* 8: 55-64.  
 Gardner, R.O. 1994: *Cyathea cooperi* naturalised in Auckland. *Auckland Botanical Society Journal* 49: 43-44.  
 Gardner, R.O. 2009: Sexuality of *Dysoxylum spectabile* (Meliaceae). *New Zealand Natural Sciences* 34: 63-68.

#### Species list for Dingle Dell, St Heliers, Auckland

##### Symbols:

- \* = exotic naturalised species  
 pl. = planted  
 pl.&w = planted and wild (usually planted adults and wild seedlings and saplings).  
 Esson 1960 = recorded by Margaret Esson (1960) – some uncertain taxa are omitted.  
 BBz 2004 = recorded during BioBlitz in 2004 (data held by Landcare Research) with a few additions recorded by Mike Wilcox in 11 Feb 2004.  
 2012 & 2013 = recorded during Bot Soc and author visits in 2013 with a few additions recorded by Mike Wilcox in 29 Feb 2012.

- [AK] = liverwort reference specimens held at Auckland Museum Herbarium.  
 [UNITEC] = lichen reference specimens, where collected held at Unitec Herbarium.  
 ( ) = recorded originally as a different species and now assumed to be this species.  
 YYYY = year given for vouchered collections (in Auckland herbarium) when species not recorded in 1960, 2004, 2012 or 2013.

Taxa	Esson 1960	BBz 2004	2012 & 2013
<b>Fungi</b>			
<i>Apiospora bambusae</i> ( <i>A. tintinnabula</i> ) on <i>Gahnia</i> sp.		+	
<i>Armillaria novae-zelandiae</i>			+
<i>Auricularia cornea</i>			+
<i>Beltrania rhombica</i> on <i>Cordyline australis</i>		+	
<i>Calocera fusca</i>			+
<i>Chalara stipitata</i> on <i>Cordyline australis</i>		+	
<i>Circinotrichum maculiforme</i> on <i>Cordyline australis</i>		+	
<i>Dactylaria</i> sp. on <i>Gahnia lacera</i>		+	
<i>Helicomyces roseus</i> on <i>Cordyline australis</i>		+	
<i>Marasmius rhopalostylidis</i>			+
<i>Melampsora coleosporioides</i>			+
<i>Melampsora larici-populina</i> on <i>Populus</i> sp.			+
<i>Melampsorium betulinum</i>			+
<i>Miyagia pseudosphaeria</i> on <i>Sonchus oleraceus</i>			+
<i>Periconia minutissima</i> on <i>Uncinia</i> sp.			+
<i>Periconiella phormii</i> on <i>Phormium tenax</i>			+
<i>Phaeoisaria dematidis</i>			+
<i>Phakopsora apoda</i>			+
<i>Phragmocephala atra</i> var. <i>stenophora</i> on <i>Cordyline australis</i>			+
<i>Phragmocephala atra</i> var. <i>stenophora</i> on <i>Gahnia lacera</i>			+

<i>Pleurotus</i> sp.			+	<i>Dirinaria applanata</i> [UNITEC 5930]	+	+
<i>Pluteus</i> sp.			+	<i>Flavoparmelia haysomii</i> [UNITEC 4197]	+	+
<i>Pseudocercospora atromarginalis</i>		+		<i>Graphis elegans</i> [UNITEC 5925]		+
<i>Pseudopeziza trifolii</i>		+		<i>Heterodermia japonica</i> [UNITEC 5931, 5951]		+
<i>Pseudospiropes simplex</i> on decorticated wood		+		<i>Heterodermia microphylla</i>	+	
<i>Pseudospiropes simplex</i> on <i>Ripogonum scandens</i>		+		<i>Heterodermia obscurata</i> [UNITEC 5934]		+
<i>Puccinia coronata</i> on <i>Poa annua</i>		+		<i>Heterodermia speciosa</i>		+
<i>Puccinia crepidicola</i> on <i>Crepis capillaris</i>		+		<i>Hyperphyscia adglutinata</i>	+	+
<i>Puccinia hieracii</i> var. <i>hieracii</i> on <i>Taraxacum officinale</i>		+		<i>Lecanactis subfarinacea</i> [UNITEC 5952]	+	+
<i>Puccinia lagenophorae</i>		+		<i>Lecanora argentata</i> [UNITEC 5928]	+	+
<i>Puccinia uncinarum</i> on <i>Uncinia</i> sp.		+		<i>Lepraria incana</i> [UNITEC 4183]	+	+
<i>Sporoschisma mirabile</i> on decorticated wood		+		<i>Leptogium aucklandicum</i> [UNITEC 4196, 5956]	+	+
<i>Stachybotrys parvispora</i> on <i>Knightia excelsa</i>		+		<i>Leptogium cyanescens</i> [UNITEC 4195, 5955]	+	+
<i>Stenella gahniae</i> on <i>Gahnia</i> sp.		+		<i>Leptogium denticulatum</i> [UNITEC 5940]		+
<i>Tranzschelia discolor</i> on <i>Prunus</i> sp.		+		<i>Lobarina scrobiculata</i> [UNITEC 5935]		+
<i>Trichobotrys</i> sp. on <i>Gahnia</i> sp.		+		<i>Normandina pulchella</i>	+	
<i>Tubeufia helicoma</i> ( <i>Helicosporium pannosum</i> ) on <i>Cordyline australis</i>		+		<i>Pannaria elixii</i> [UNITEC 5937]		+
<i>Wiesneriomyces javanicus</i>		+		<i>Parmotrema austrocetratum</i> [UNITEC 5954]		+
<b>Myxomycetes (slime moulds)</b>				<i>Parmotrema perlatum</i>	+	+
<i>Arcyria denudata</i>			+	<i>Parmotrema reticulatum</i> [UNITEC 5953]		+
<i>Arcyria ferruginea</i>			+	<i>Parmotrema subtinctorium</i> [UNITEC 4202]	+	+
<i>Arcyria incarnata</i>			+	<i>Pertusaria</i> sp.	+	+
<i>Dictydiaethalium plumbeum</i>			+	<i>Phaeographis mucronata</i> [UNITEC 4182]		+
<i>Didymium iridis</i>			+	<i>Physcia adscendens</i> [UNITEC 5950]		+
<i>Didymium listeri</i>			+	<i>Porina exocha</i> [UNITEC 4201, 5946]	+	+
<i>Didymium melanospermum</i>			+	<i>Pseudocypbellaria carpoloma</i> [UNITEC 4192, 4199, 5941]	+	+
<i>Hemitrichia calyculata</i>			+	<i>Pseudocypbellaria crocata</i> [UNITEC 4193, 5942]	+	+
<i>Metatrachia floriformis</i>			+	<i>Pseudocypbellaria multifida</i> [UNITEC 4187]	+	
<i>Physarum compressum</i>			+	<i>Pseudocypbellaria wilkinsii</i> [UNITEC 5944]	+	+
<i>Physarum</i> sp.			+	<i>Punctelia subrudecta</i>	+	
<i>Stemonitis fusca</i>			+	<i>Pyrenula cyrtospora</i>	+	
<i>Trichia decipiens</i>			+	<i>Ramalina celastri</i>	+	+
<i>Trichia favoginea</i>			+	<i>Ramalina geniculata</i> [UNITEC 4204]	+	
<i>Trichia varia</i>			+	<i>Ramalina peruviana</i> [UNITEC 4188, 5949]	+	+
<b>Lichens</b>				<i>Sclerophora sanguinea</i> [UNITEC 5932]		+
<i>Amandinea punctata</i>		+	+	<i>Sticta fuliginosa</i> [UNITEC 4200, 4203]	+	
<i>Buellia demutans</i> [UNITEC 5926]			+	<i>Sticta limbata</i> [UNITEC 4190]	+	
<i>Chrysothrix candelaris</i>		+	+	<i>Sticta squamata</i> [UNITEC 5938]	+	+
<i>Cladonia darwinii</i> [UNITEC 5939]		+	+	<i>Teloschistes chrysophthalmus</i>	+	+
<i>Coenogonium implexum</i> [UNITEC 4191, 5947]		+	+	<i>Teloschistes sieberianus</i> [UNITEC 4184]	+	+
<i>Coenogonium luteum</i> [UNITEC 4331]		+		<i>Thelotrema lepadinum</i> [UNITEC 5933]		+
<i>Collema kauaiense</i>		+	+	<i>Usnea nidifica</i>	+	
<i>Crocodia aurata</i> [UNITEC 5936]		+	+			
<i>Crocodia poculifera</i> [UNITEC 4189, 4198, 5945]		+	+			
<i>Dictyographa cinerea</i> [UNITEC 4194]		+				

<i>Usnea rubicunda</i> [UNITEC 4281, 5948]		+	+
<i>Xanthoparmelia scabrosa</i> (on the road)		+	+
<i>Xanthoria parietina</i>		+	+

#### Liverworts

<i>Acrolejeunea mollis</i> [AK 286425]		+	
<i>Archilejeunea olivacea</i> [AK 286178]		+	+
<i>Chiloscyphus helmsianus</i> [AK 341504]			+
<i>Chiloscyphus semiteres</i> var. <i>semiteres</i> [AK 341510]			+
<i>Chiloscyphus subporosus</i> var. <i>subporosus</i> [AK 286173]		+	
<i>Cololejeunea</i> aff. <i>cucullifolia</i> [AK 286428]		+	
<i>Fossombronia</i> sp. [AK 286422]		+	+
<i>Frullania rostellata</i> [AK 347974]		+	+
<i>Heteroscyphus cunestipulus</i> [AK 286431]		+	+
<i>Heteroscyphus normalis</i> [AK 286172]		+	+
<i>Heteroscyphus renistipulus</i> [AK 286426]		+	
<i>Heteroscyphus supinus</i> [AK 347973]			+
<i>Lejeunea sinclairii</i> [AK 341507]			+
<i>Lopholejeunea</i> sp. [AK 286437]		+	
<i>Lunularia cruciata</i> * [AK 312014]		+	+
<i>Metalejeunea cucullata</i> [AK 286119]		+	+
<i>Metzgeria furcata</i> [AK 286432]		+	+
<i>Plagiochila arbuscula</i> [AK 321074]		+	+
<i>Radula silvosa</i> [AK 286180]		+	+
<i>Symphyogyna tenuinervis</i> [AK 286176]		+	+

#### Mosses

<i>Bryobeckettia bartlettii</i>		+	+
<i>Bryum argenteum</i> [silver moss]		+	
<i>Bryum capillare</i>		+	+
<i>Bryum</i> sp.		+	
<i>Calliergonella cuspidata</i> * [pointed spear-moss]		+	
<i>Camptochaete pulvinata</i>		+	
<i>Campylopus clavatus</i>		+	
<i>Campylopus introflexus</i>		+	
<i>Dicnemon calycinum</i>		+	
<i>Dicranella jamesonii</i>		+	
<i>Dicranoloma menziesii</i>		+	
<i>Echinodium hispidum</i>		+	
<i>Eurhynchium praelongum</i> *		+	
<i>Eurhynchium speciosum</i> (*?)		+	
<i>Fissidens curvatus</i>		+	
<i>Fissidens leptocladus</i>		+	+
<i>Fissidens taxifolius</i> *		+	+
<i>Fissidens tenellus</i>		+	
<i>Hypnum cupressiforme</i>		+	

<i>Hypopterygium tamarisci</i>		+	+
<i>Leptostomum macrocarpum</i>			+
<i>Macromitrium prorepens</i>			+
<i>Macromitrium gracile</i>			+
<i>Macromitrium ligulare</i>			+
<i>Mniodendron colensoi</i> [Colenso's umbrella moss]			+
<i>Orthorrhynchium elegans</i>			+
<i>Papillaria crocea</i>			+
<i>Papillaria flavolimbata</i>			+
<i>Papillaria flexicaulis</i>			+
<i>Pendulothecium punctatum</i>			+
<i>Pseudoscleropodium purum</i> *			+
<i>Ptychomnion aciculare</i>			+
<i>Racopilum robustum</i>			+
<i>Racopilum strumiferum</i>			+
<i>Rhaphidorrhynchium amoenum</i>			+
<i>Rhynchostegium tenuifolium</i>			+
<i>Syntrichia papillosa</i>			+
<i>Thuidiopsis sparsa</i>			+
<i>Tortula muralis</i>			+
<i>Tortula truncata</i> *			+
<i>Trachyloma</i> sp.			+
<i>Weissia controversa</i> var. <i>gymnostoma</i> [Petrie's wall moss]			+
<i>Zygodon menziesii</i>			+

#### Lycophytes

<i>Selaginella kraussiana</i> * [African clubmoss]		+	+	+
---	--	---	---	---

#### Ferns

<i>Adiantum cunninghamii</i> [maidenhair fern]		+	+	+
<i>Adiantum hispidulum</i> [rosy maidenhair fern]		+	+	+
<i>Adiantum raddianum</i> * [Delta maidenhair fern]				+
<i>Asplenium bulbiferum</i> [hen & chickens fern]		+		+
<i>Asplenium flaccidum</i> [hanging spleenwort]		+	+	+
<i>Asplenium oblongifolium</i> [shining spleenwort]		+	+	+
<i>Blechnum chambersii</i>			+	+
<i>Blechnum filiforme</i> [thread fern]		+	+	+
<i>Blechnum membranaceum</i>		+	+	+
<i>Blechnum novae-zelandiae</i> [kiokio]	(+)			+
<i>Christella dentata</i>				+
<i>Cyathea cooperi</i> * [scaly tree fern]				+
<i>Cyathea dealbata</i> [silver fern]		+	+	+
<i>Cyathea medullaris</i> [mamaku]		+	+	+
<i>Deparia petersenii</i>				+
<i>Dicksonia squarrosa</i> [wheki]		+	+	+
<i>Diplazium australe</i>				+
<i>Doodia australis</i> [rasp fern]		+	+	+
<i>Lastreopsis glabella</i>			+	+
<i>Lastreopsis microsora</i>			+	+
<i>Microsorium pustulatum</i> [hound's tongue fern]		+	+	+



<i>Microsorium scandens</i>		+	+	<i>Beilschmiedia tarairi</i> [taraire]		+	+
<i>Nephrolepis cordifolia</i> * [ladder fern]		+	+	<i>Bellis perennis</i> * [lawn daisy]		+	+
<i>Pellaea rotundifolia</i>	+			<i>Beta vulgaris</i> var. <i>cicla</i> * [silver beet]			+
<i>Pneumatopteris pennigera</i> [feather fern]	+	+	+	<i>Betula pendula</i> * [silver birch] pl.		+	+
<i>Pteridium esculentum</i> [bracken]	+	+	+	<i>Brachycton acerifolius</i> * [Illawarra flame tree] pl.		+	+
<i>Pteris cretica</i> *			+	<i>Brachyglottis repanda</i> [rangiora]	+		
<i>Pteris macilentia</i>		+	+	<i>Callistemon pallidus</i> * [bottlebrush] pl.		+	+
<i>Pteris tremula</i> [shaking brake]	+	+	+	<i>Callistemon salignus</i> * [willow bottlebrush] pl.			+
<i>Ptisana salicina</i> [king fern] pl.&w			+	<i>Callitriche muelleri</i> [native starwort]		+	+
<i>Pyrosia eleagnifolia</i> [leather-leaf fern]	+	+	+	<i>Callitriche stagnalis</i> *[starwort]		+	+
<i>Tmesipteris lanceolata</i>			+	<i>Calystegia tuguriorum</i>			+
<i>Trichomanes venosum</i>			+	<i>Calystegia sepium</i> [pink bindweed]	(+)	+	+
<b>Gymnosperms</b>				<i>Campanula poscharskyana</i> * [Serbian bellflower]			+
<i>Agathis australis</i> [kauri] pl.	+	+	+	<i>Cardamine hirsuta</i> * [bittercress]		(+)	+
<i>Agathis robusta</i> * [Queensland kauri] pl.		+	+	<i>Carmichaelia australis</i> [native broom]	+		
<i>Chamaecyparis pisifera</i> * [sawara cypress] pl.		+	+	<i>Castanospermum australe</i> * [black bean] pl.		+	+
<i>Cryptomeria japonica</i> * [Japanese cedar] pl.			+	<i>Casuarina glauca</i> * [swamp sheoak] pl.		(+)	+
<i>Dacrycarpus dacrydioides</i> [kahikatea] pl.&w	+	+	+	<i>Centaurea erythraea</i> * [centaury]		+	
<i>Dacrydium cupressinum</i> [rimu] pl.	+	+	+	<i>Cerastium glomeratum</i> * [mouse-eared chickweed]		+	+
<i>Ginkgo biloba</i> * [ginkgo] pl.		+	+	<i>Cestrum nocturnum</i> * [queen of the night]		+	+
<i>Libocedrus plumosa</i> [kawaka] pl.		+	+	<i>Chrysanthemoides monolifera</i> * [boneseed]		+	+
<i>Metasequoia glyptostroboides</i> * [dawn redwood] pl.		+	+	<i>Cinnamomum camphora</i> * [camphor laurel]		+	
<i>Phyllocladus trichomanoides</i> [tanekaha] pl.	+	+	+	<i>Cirsium vulgare</i> * [Scotch thistle]		+	+
<i>Picea sitchensis</i> * [Sitka spruce] pl.			+	<i>Clematis paniculata</i> [puawhananga]	+	+	+
<i>Podocarpus totara</i> [totara] pl.&w	+	+	+	<i>Conyza sumatrensis</i> * [fleabane]		+	+
<i>Prumnopitys ferruginea</i> [miro] pl.	+	+	+	<i>Coprosma crassifolia</i> × <i>C. repens</i> pl.		+	
<i>Thuja occidentalis</i> * [white cedar]		(+)	+	<i>Coprosma grandifolia</i> [raurekau]	+	+	+
<b>Dicots</b>				<i>Coprosma macrocarpa</i> [coastal karamu]	(+)	+	+
<i>Acaena anserinifolia</i> [bidibidi]	+			<i>Coprosma repens</i> [taupata] pl.		+	+
<i>Acanthus mollis</i> * [bear's britches]		+	+	<i>Coprosma rhamnoides</i>	+	+	+
<i>Acer rubrum</i> var. <i>trilobum</i> * [trident red maple] pl.			+	<i>Coprosma robusta</i> [karamu]	+	+	+
<i>Albizia julibrissin</i> * [silk tree] pl.		+	+	<i>Corokia buddleioides</i>	+		
<i>Alectryon excelsus</i> [titoki]		+	+	<i>Corokia buddleioides</i> × <i>C. cotoneaster</i> pl.			+
<i>Allocauarina littoralis</i> * [black sheoak]			+	<i>Corynocarpus laevigatus</i> [karaka]	+	+	+
<i>Anagallis arvensis</i> s.str.* [scarlet pimpernel]			+	<i>Cotoneaster lacteus</i> *			+
<i>Anredera cordifolia</i> * [Madeira vine]		+	+	<i>Crassula multicava</i> * [fairy crassula]		+	+
<i>Aphanes inexpectata</i> * [parsley piert]			+	<i>Crataegus monogyna</i> * [hawthorn]	+	+	+
<i>Araujia hortorum</i> * [moth plant]		+	+	<i>Crepis capillaris</i> * [hawksbeard]		+	
<i>Artemisia verlotiorum</i> * [mugwort] 1984 (AK 171345, G.M. Taylor)				<i>Cymbalaria muralis</i> * [ivy-leaved toadflax]			+
<i>Australina pusilla</i> 2013 (AK 336330, P.J. de Lange)				<i>Daucus carota</i> *[wild carrot]		+	
<i>Baloghia inophylla</i> * [brush bloodwood]		+		<i>Dichondra repens</i> [Mercury Bay weed]			+

<i>Diospyros virginiana</i> * [persimmon] pl.		+	+	<i>Kunzea ericoides</i> [kanuka]	+	+	+
<i>Dodonaea viscosa</i> [akeake]	+			<i>Lamium purpureum</i> * [red dead nettle]		+	
<i>Dysoxylum spectabile</i> [kohekohe]	+	+	+	<i>Lapsana communis</i> * [nipplewort]		+	+
<i>Elatostema rugosum</i> [parataniwha]	+	+	+	<i>Laurelia novae-zelandiae</i> [pukatea] pl.		+	+
<i>Elaeagnus</i> × <i>reflexus</i> * [elaeanus]		+	+	<i>Lavandula dentata</i> * [lavender]			+
<i>Elingamita johnsonii</i> pl.			+	<i>Leontodon taraxacoides</i> * [hawkbit]		+	+
<i>Entelea arborescens</i> [whau] pl.			+	<i>Lepidium didymum</i> * [twin cress]		+	+
<i>Epilobium ciliatum</i> * [willow herb]		+		<i>Leptospermum scoparium</i> [manuka]	+	+	+
<i>Erigeron karvinskianus</i> * [Mexican daisy]		+	+	<i>Leucopogon fasciculatus</i> [mingimingi]	+		
<i>Eriobotrya japonica</i> * [loquat]			+	<i>Ligustrum lucidum</i> * [tree privet]		+	+
<i>Erythrina</i> × <i>sykesii</i> * [coral tree] pl.			+	<i>Ligustrum sinense</i> * [Chinese privet]	(+)	+	+
<i>Eucalyptus nicholii</i> * [narrow- leaved black peppermint] pl.		(+)	+	<i>Linaria purpurea</i> * [purple linaria]			+
<i>Eucalyptus saligna</i> * [Sydney blue gum] pl.		(+)	+	<i>Liquidambar styraciflua</i> * [swamp gum] pl.		+	+
<i>Euonymus japonicas</i> * [spindle tree] pl.		+		<i>Liriodendron tulipifera</i> * [tulip tree] pl.		+	+
<i>Euphorbia depauperata</i> var. <i>pubescens</i> *		+	+	<i>Lonicera japonica</i> * [honeysuckle]	+	+	
<i>Euphorbia peplus</i> * [milk weed]		+	+	<i>Lophomyrtus bullata</i>	+		
<i>Fraxinus excelsior</i> * [English ash] pl.		+	+	<i>Lotus pedunculata</i> * [lotus]		+	
<i>Fuchsia excorticata</i> [tree fuchsia]	+			<i>Lotus suaveolens</i> * [hairy birdsfoot trefoil]		+	
<i>Fumaria capreolata</i> * [rampant fumitory]		+	+	<i>Ludwigia palustris</i> * [water purslane]			+
<i>Galium aparine</i> * [cleavers]		+	+	<i>Malus prunifolia</i> * [pear-leaf crabapple] pl.		+	
<i>Galium divaricatum</i> *		+	+	<i>Malva</i> sp.*		+	+
<i>Geniostoma ligustrifolium</i> [hangehange]	+	+	+	<i>Medicago Arabica</i> * [spotted bur medick]		+	
<i>Geranium homeanum</i>		+	+	<i>Melia azedarach</i> * [Persian lilac] pl.		+	+
<i>Geranium molle</i> * [dove's foot cranesbill]		+	+	<i>Melicope ternata</i> [wharangii]	+	+	+
<i>Geranium purpureum</i> * [small herb Robert]		+	+	<i>Melicytus ramiflorus</i> [mahoe]	+	+	+
<i>Gomphocarpus fruticosus</i> * [swan plant]		+		<i>Meryta sinclairii</i> [pukanui] pl.			+
<i>Griselinia littoralis</i> [broadleaf] pl.		+	+	<i>Metrosideros excelsa</i> [pohutukawa] pl.&w		+	+
<i>Griselinia lucida</i> [puka] pl.		+	+	<i>Metrosideros kermadecensis</i> [Kermadec pohutukawa] pl.			+
<i>Haloragis erecta</i>	+	+	+	<i>Modiola caroliniana</i> * [creeping mallow]		+	+
<i>Hedera helix</i> * [ivy]		+	+	<i>Muehlenbeckia australis</i> [pohuehue]	+		+
<i>Hedycarya arborea</i> [pigeonwood] pl.&w		+	+	<i>Muehlenbeckia complexa</i> [pohuehue] pl.&w	(+)	+	+
<i>Helianthus annuus</i> * [sunflower]		+		<i>Myosotis sylvatica</i> * [garden forget-me-not]			+
<i>Helminthotheca echioides</i> * [oxtongue]		+	+	<i>Myoporum laetum</i> [ngaio]	+		+pl.
<i>Hoheria populnea</i> [lacebark]	+	+	+	<i>Myrsine australis</i> [mapou]	+	+	+
<i>Hydrocotyle moschata</i> [hydrocotyle]		+	+	<i>Nasturtium officinale</i> * [watercress]		+	+
<i>Hydrocotyle tripartita</i> * [Australian hydrocotyle]		+		<i>Nerium oleander</i> * [oleander] pl.		+	+
<i>Hypericum androsaemum</i> * [tutsan]	+	+	+	<i>Nestegis lanceolata</i> [white maire]		+	+
<i>Hypochoeris radicata</i> * [catsear]		+	+	<i>Oenanthe pimpinelloides</i> * [parsley dropwort]		+	+
<i>Ipomoea indica</i> * [blue morning glory]		+	+	<i>Olearia albida</i> var. <i>angulata</i> pl.		+	+
<i>Jasminum polyanthum</i> * [climbing jasmine]		+		<i>Olearia furfuracea</i> [akepiro]	+		
<i>Juglans regia</i> * [walnut] pl.		+	+	<i>Olearia paniculata</i> [golden akeake] pl.	+	+	+
<i>Knightia excelsa</i> [rewarewa] pl.&w		+	+	<i>Oxalis corniculata</i> * [horned oxalis]			+

<i>Oxalis exilis</i> [creeping oxalis]		+	+	<i>Rosa</i> sp.* [wild rose]	+		
<i>Oxalis incarnata</i> * [lilac oxalis]		+	+	<i>Rubus australis</i>	+		
<i>Oxalis latifolia</i> * [fishtail oxalis]		+		<i>Rubus cissoides</i> [bush lawyer]	+	+	+
<i>Oxalis pes-caprae</i> *			+	<i>Rubus fruticosus</i> * [blackberry]	(+)	+	+
[Bermuda buttercup]				<i>Rumex crispus</i> * [curled dock]			+
<i>Oxalis purpurea</i> *		+	+	<i>Rumex obtusifolius</i> *		+	+
[South African oxalis]				[broad-leaved dock]			
<i>Paraserianthes lophantha</i> *			+	<i>Rumex pulcher</i> * [fiddle dock]		+	+
[brush wattle]				<i>Rumex sagittatus</i> *			+
<i>Parsonsia heterophylla</i>	+	+	+	[climbing dock]			
<i>Passiflora caerulea</i> *		+	+	<i>Salix</i> × <i>sepulcralis</i>	(+)	+	+
[passionfruit]				'Chrysocoma'*			
<i>Pericallis</i> × <i>hybrida</i> * [cineraria]			+	[golden weeping willow]			
<i>Persea americana</i> * [avocado]			+	<i>Schefflera digitata</i> [pate]	+	+	
<i>Persicaria decipiens</i>		+	+	<i>Senecio bipinnatisectus</i> *			+
[swamp willow weed]				[Australian fireweed]			
<i>Physalis peruviana</i> *		+	+	<i>Senecio esleri</i> *		+	
[cape gooseberry]				<i>Senecio vulgaris</i> * [groundsel]		+	+
<i>Phytolacca octandra</i> *		+	+	<i>Solanum lycopersicum</i> *		+	
[inkweed]				[tomato]			
<i>Piper excelsum</i> [kawakawa]	+	+	+	<i>Solanum mauritianum</i> *		+	+
<i>Pittosporum crassifolium</i> [karo]	+	+	+	[woolly nightshade]			
<i>Pittosporum eugenioides</i>		+	+	<i>Solanum nigrum</i> *		+	+
[lemonwood] pl.				[black nightshade]			
<i>Pittosporum tenuifolium</i>	+	+	+	<i>Solanum nodiflorum</i>		+	+
[kohuhu]				[small-flowered nightshade]			
<i>Plagianthus regius</i>			+	<i>Solanum pseudocapsicum</i> *		+	+
[ribbonwood] pl.				[Jerusalem cherry]			
<i>Planchonella costata</i>			+	<i>Sonchus oleraceus</i> *		+	+
[tawapou] pl.				[puha, sow thistle]			
<i>Plantago lanceolata</i> *		+	+	<i>Sophora microphylla</i> [kowhai]	+	+	+
[narrow-leaved plantain]				<i>Stachys arvensis</i> *		+	
<i>Plantago major</i> *		+	+	[staggerweed]			
[broad-leaved plantain]				<i>Stachys byzantine</i> *		+	
<i>Plectranthus ciliatus</i> *		+	+	[lamb's ears]			
<i>Plectranthus ecklonii</i> *		+	+	<i>Streblus heterophyllus</i>	+		
<i>Pomaderris kumeraho</i>	+			[milk tree]			
[kumarahou]				<i>Syzygium australe</i> *			+
<i>Potentilla indica</i> *	(+)	+	+	[brush cherry]			
[Indian strawberry]				<i>Syzygium maire</i>			+
<i>Populus nigra</i> 'Italica'*		+	+	[swamp maire] pl.			
[Lombardy poplar] pl.				<i>Syzygium smithii</i> var. "minor"*			+
<i>Prunella vulgaris</i> * [selfheal]		+	+	[small-leaved monkey apple]			
<i>Prunus campanulata</i> *			+	<i>Syzygium smithii</i> *		+	+
[Taiwan cherry]				[monkey apple]			
<i>Prunus</i> × <i>domestica</i> * [plum]		+		<i>Taraxacum officinale</i> *		+	+
<i>Prunus persica</i> * [peach]			+	[dandelion]			
<i>Prunus serrulata</i> * [hill cherry]		+	+	<i>Trifolium dubium</i> *		+	
<i>Pseudopanax arboreus</i>	+	+	+	[suckling clover]			
[five-finger]				<i>Trifolium repens</i> *		+	+
<i>Pseudopanax crassifolius</i>	+		+	[white clover]			
[lancewood]				<i>Tropaeolum majus</i> *		+	+
<i>Pseudopanax crassifolius</i> × <i>P.</i>	+	+	+	[climbing nasturtium]			
<i>lessonii</i>				<i>Ulex europaeus</i> * [gorse]	+	+	+
<i>Pseudopanax discolor</i> pl.			+	<i>Ulmus</i> × <i>hollandica</i> *	(+)	+	+
<i>Pseudopanax lessonii</i> [houpara]	+	+	+	[Dutch elm] pl.			
<i>Quercus cerris</i> *		+	+	<i>Ulmus minor</i> 'Variegata'*		(+)	+
[Turkey oak] pl.				[variegated elm] pl.			
<i>Quercus palustris</i> * [pin oak] pl.		+	+	<i>Veronica arvensis</i> *		+	+
<i>Quercus robur</i> *	(+)	+	+	[wall speedwell]			
[pedunculate oak] pl.				<i>Veronica persica</i> * [speedwell]			+
<i>Ranunculus parviflorus</i> *		+	+	<i>Veronica serpyllifolia</i> *			+
[small-flowered buttercup]				[turf speedwell]			
<i>Ranunculus reflexus</i>	+			<i>Veronica stricta</i>	+	+	+
[creeping buttercup]		+	+	[koromiko] pl.			
<i>Raphanus raphanistrum</i> *			+	<i>Vicia sativa</i> * [vetch]		+	+
[wild radish]				<i>Vicia tetrasperma</i> * [vetch] 1974			
<i>Rhaphiolepis umbellata</i> *		+	+	(AK181934, Asteridge & Esler)			
[Yeddo hawthorn]				<i>Vitex lucens</i> [puriri] pl.&w	+	+	+
				<i>Vasconcellea pubescens</i> *		+	
				[mountain pawpaw]			

<i>Wahlenbergia violacea</i> [violet harebell]			+		<i>Cyperus ustulatus</i> [giant umbrella sedge]	+	+	
<b>Monocots</b>					<i>Dactylis glomerata</i> * [cocksfoot]		+	
<i>Agapanthus praecox</i> subsp. <i>orientalis</i> * [agapanthus]		+	+		<i>Dianella nigra</i> [NZ blueberry] pl. [several, all planted]	+		+pl.
<i>Allium triquetrum</i> * [onion weed]		+	+		<i>Digitaria ciliaris</i> * [summer grass]			+
<i>Anthoxanthum odoratum</i> * [sweet vernal]		+			<i>Digitaria sanguinalis</i> * [summer grass]		+	+
<i>Apodasmia similis</i> [oiol] pl.		+	+		<i>Earina mucronata</i>	+		
<i>Archontophoenix</i> <i>cunninghamiana</i> * [Bangalow palm] pl.		+	+		<i>Ehrharta erecta</i> * [veldt grass]		+	+
<i>Arthropodium bifurcatum</i> [rengarenga lily] pl.			+		<i>Gahnia lacera</i> [coastal cutty grass]	+	+	+
<i>Asparagus aethiopicus</i> * [emerald asparagus fern]		+			<i>Glyceria declinata</i> * [floating sweet grass]			+
<i>Asparagus asparagoides</i> * [smilax]			+		<i>Hedychium gardnerianum</i> * [wild ginger]		+	+
<i>Asparagus scandens</i> * [climbing asparagus]		+	+		<i>Iris foetidissima</i> * [stinking iris]		+	
<i>Astelia banksii</i> pl.			+		<i>Isolepis reticularis</i>			+
<i>Austroderia fulvida</i> [toetoe]	+				<i>Isolepis sepulcralis</i> *		+	
<i>Axonopus fissifolius</i> * [narrow-leaved carpet grass]			+		<i>Juncus australis</i>			+
<i>Carex divulsa</i> * [grey sedge]		+	+		<i>Juncus effusus</i> * [soft rush]		+	
<i>Carex flacca</i> * [carnation grass]			+		<i>Juncus tenuis</i> * [track rush]			+
<i>Carex flagellifera</i>	+	+	+		<i>Lepidosperma australe</i>			+
<i>Carex inversa</i>			+		<i>Lolium perenne</i> * [perennial rye grass]		+	+
<i>Carex lambertiana</i>		+	+		<i>Lomandra longifolia</i> 'Tanika'* pl.			+
<i>Carex lessoniana</i>	(+)		+		<i>Microlaena stipoides</i> [meadow rice grass]		+	+
<i>Carex longibrachiata</i> * [Australian sedge]		+			<i>Narcissus tazetta</i> * [polyanthus narcissus]		+	
<i>Carex secta</i> pl.			+		<i>Oplismenus hirtellus</i> [panic grass]	+	+	+
<i>Carex solandri</i>		+			<i>Paspalum dilatatum</i> * [paspalum]		+	+
<i>Carex testacea</i>		+			<i>Phoenix canariensis</i> * [Canary Is. date palm] pl.&w		+	+
<i>Carex virgata</i>	+	+	+		<i>Phormium tenax</i> [flax]	+	+	+
<i>Cenchrus clandestinum</i> * [kikuyu grass]		+	+		<i>Poa annua</i> * [annual poa]		+	+
<i>Clivia miniata</i> * [Natal lily] pl.		+	+		<i>Rhopalostylis sapida</i> [nikau] pl.&w	+	+	+
<i>Cordyline australis</i> [cabbage tree]	+	+	+		<i>Ripogonum scandens</i> [supplejack]	+	+	+
<i>Cordyline rubra</i> * [palm lily] pl.		+			<i>Rytidosperma racemosum</i> * [wallaby grass]		+	+
<i>Cortaderia selloana</i> * [pampas]		+	+		<i>Setaria pumila</i> * [yellow bristle grass]			+
<i>Crinum × powellii</i> * [swamp lily] pl.		+			<i>Trachycarpus fortunei</i> * [Chinese windmill palm] pl.		+	+
<i>Crocasmia × crocosmiiflora</i> * [montbretia]		+			<i>Tradescantia fluminensis</i> * [wandering Jew]	+	+	+
<i>Cynodon dactylon</i> * [Bermuda grass]		+			<i>Uncinia distans</i>		+	
<i>Cyperus brevifolius</i>		+			<i>Uncinia uncinata</i> [hook sedge]	+	+	+
<i>Cyperus congestus</i> * [brown umbrella sedge]		+	+		<i>Zantedeschia aethiopicum</i> * [arum lily]		+	
<i>Cyperus eragrostis</i> * [green umbrella sedge]	(+)	+	+					

Compiled by Ewen Cameron, Leslie Haines, Jenny Lux, Elaine Marshall, Mei Nee Lee, Joshua Salter, Jessica Beever, John Braggins, Rick Kooperberg, Dan Blanchon, Carol Lockett, Peter Buchanan, Peter Johnston, Eric Mckenzie, Nick Waipara (BioBlitz, 30 April – 1 May 2004); Mike Wilcox (11 Feb 2004, 29 Feb 2012, 15 Jun, 8 July, 19 Aug 2013); Bot Soc (20 Jul 2013); Clive Shirley (20 Jul 2013); Jessica Beever and John Braggins (19 Aug 2013); Ewen Cameron (15 Sep 2013).