

# Heathrow

# Terminal 1

## Heathrow Airport Complete Contents of Terminal 1



## Offered for Sale by Private Treaty and a Series of Auctions



GLOBAL PARTNERS  
[www.cagp.com](http://www.cagp.com)

Sale held in conjunction with

**Indassol**  
Industrial Asset Solutions

NORTH AMERICA | SOUTH AMERICA | EUROPE | AUSTRALIA | AFRICA | MIDDLE EAST

# Heathrow

## Address

Heathrow Airport, TW6 1EW,  
London, UK

## Transport

Air: Heathrow Airport (LHR)  
Rail: Heathrow Express  
& Piccadilly Line Underground  
(Terminals 2&3)  
Road: Postcode TW6 1EW

## Accommodation

Heathrow Airport is serviced by  
a large range of hotels

## Preview

Strictly by prior appointment only,  
additional security authorisation  
may be required for visitors

## For further information contact:

**Daniel Gray or George Wade**

Tel: +44(0) 845 163 0581 or

**Nigel Naden (Indassol)**

+44(0) 7775 604208

**Email:** [daniel@cagp.com](mailto:daniel@cagp.com)  
or [george@cagp.com](mailto:george@cagp.com)



## Terminal History

Terminal 1 was opened in 1968 and was formally opened by Queen Elizabeth II in April 1969. At the time Terminal 1 was the biggest short-haul terminal of its kind in Western Europe.

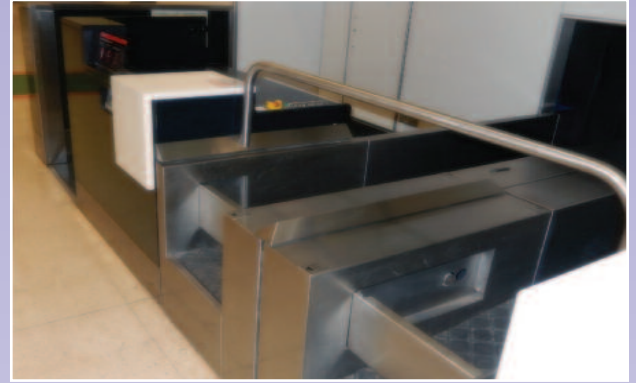
A new pier (the so-called Europier) was added in the 1990's which increased the capacity of the terminal, catering for widebody aircraft. In 2005, a substantial redesign and redevelopment of Terminal 1 was completed, which saw the opening of the new Eastern Extension, doubling the departure lounge in size and creating additional seating and retail space.

**As part of this unique offering 'Turn key' solutions are available for the extraction, refurbishment and re-installation globally of the airport systems.**





# Check-in



(110+) Check-in Desks Available  
Various Configurations Complete with  
Avery Scales and Baggage Belts



Modules of Check-in Desk



Complete Baggage  
Drop Systems

**Avery Weigh-Tronix**



Flight Connection  
Desks



# Security Systems



(12) Smiths Heimann Baggage Scanners, HI-SCAN 6040 aTiX and HI-SCAN 6046si



Passport Control Desks, Camera Systems and Queue Management

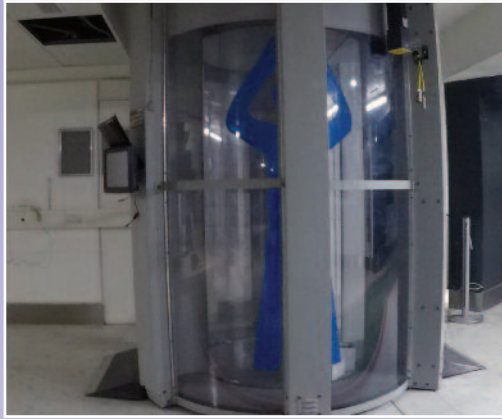


Air Lock Security Doors



Iris Entry Scanners





(2) L3 Pro Vision  
Body Scanners



Smiths Barringer  
Ion Scanners



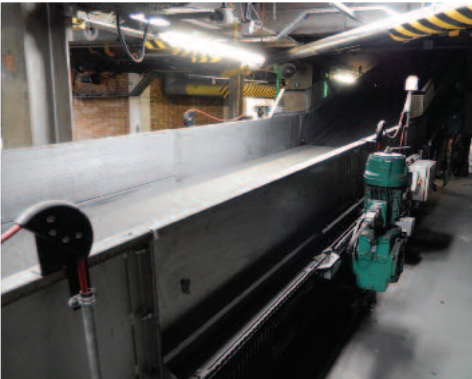
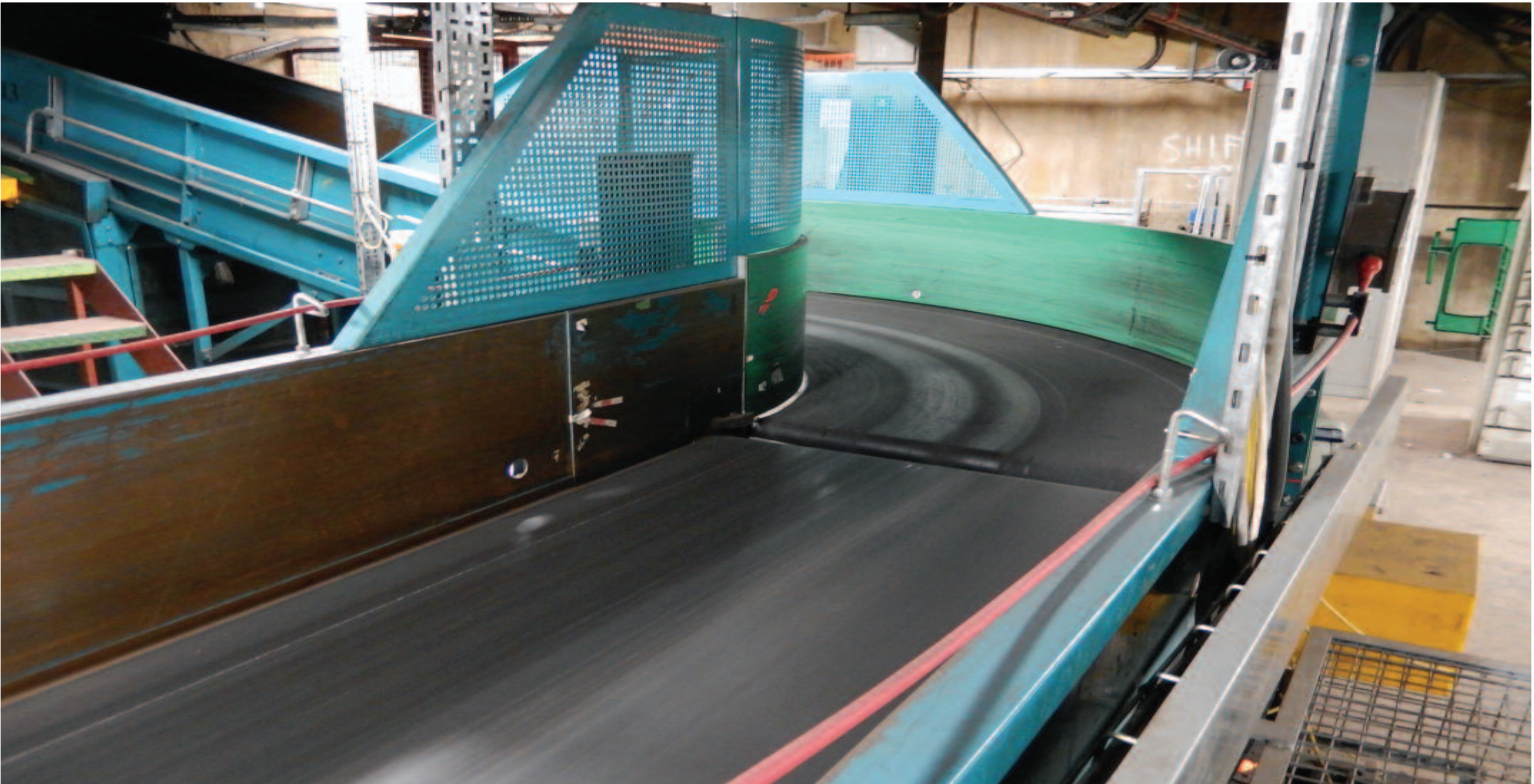
Fast Track Security Entry  
Gates and Desks



Security Information Signs  
With Built-in Display Screens



# (5) Complete Modular Baggage Delivery Systems Logan Fabrication/ Vanderlande/ Alstec



Fast Drop Baggage Systems



Spares Inventory



# Baggage Reclaim



**VANDERLANDE**



(9) Baggage Carousels, Logan and Vanderlande,  
Up to 70m Belt Length,  
(2) Outsize Baggage Reclaims





# Escalators, Travellators and Elevators



(50) Elevator Systems  
(Hydraulic and Cable)

---



(15) Escalators

---



(8) Travellators

---



Two Storey  
Lift Passenger  
Elevator

---



# Partition Systems



**Blast Mitigation  
Glass Partitions**



**(15+) Kilometres  
of Stainless  
Steel Hand and  
Foot Modular  
Balustrade  
Systems**



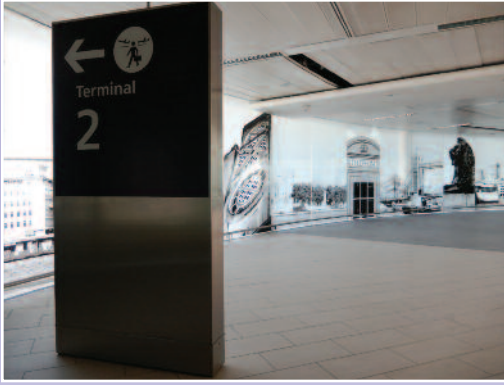
**Architectural Display  
Structures**



**Kilometers of  
Removable  
Passenger Partition**



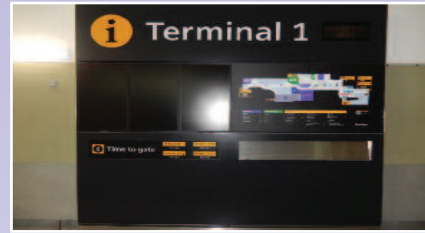
# Information Display Systems



Signage, Seating and Advertising Boards



JCDecaux Advertising Systems



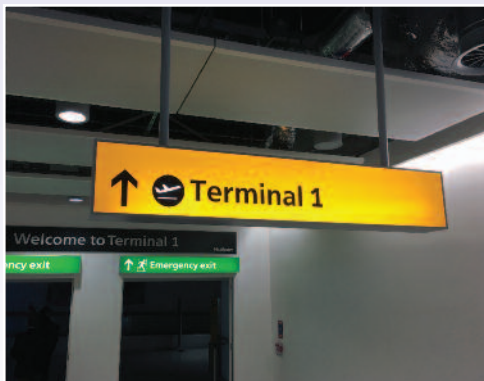
(100+) Display Systems



Portable Flight Information Display



Airport Information Boards

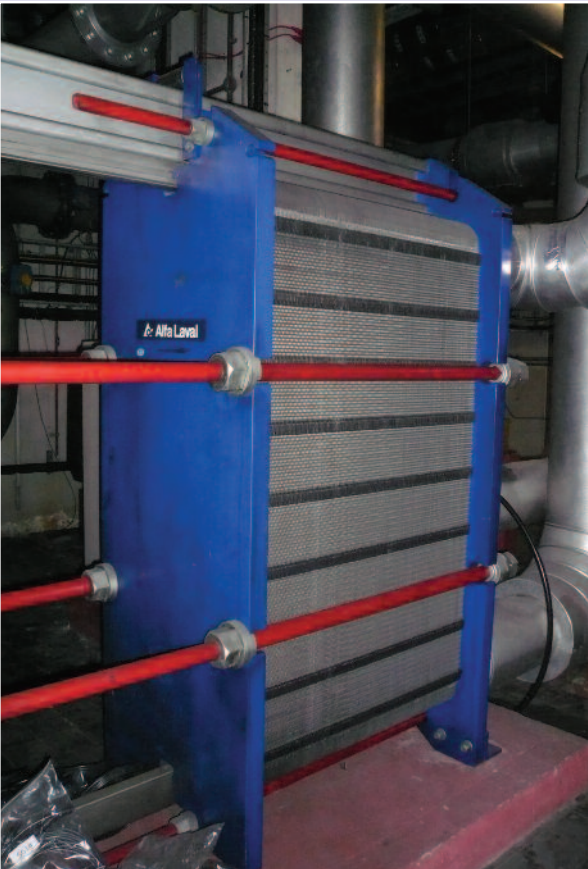




# Gates, Piers and Airbridges



# Support Plant



Air Compressors & Dryers,  
Chillers & Heat Exchangers.  
(1,200+) High Pressure 'Shaw'  
40 bar Valves. (2,000+) Pump  
Sets, (100+) Switch Panels,  
Lighting Systems, Distribution  
Boards and Control Systems



# Heathrow

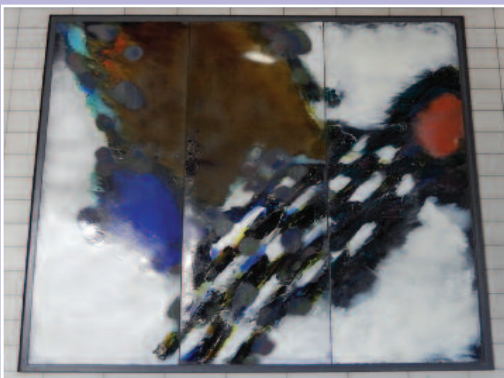
# Terminal 1

## Heathrow Airport Complete Contents of Terminal 1

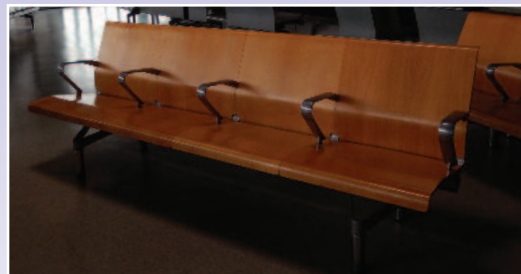
Offered for Sale by  
Private Treaty and a Series  
of Auctions



## Collectable Airport Assets



Art at Heathrow – (10) Stefan Knapp Paintings on Enamel



(4,000+)  
Airport Seats



For Additional Airport Assets Available  
please visit [www.airportassets.com](http://www.airportassets.com)

# Airport Assets