

Heritage 150

High Point Hug Shawl



Designed by

Shannon Thomas



Heritage 150 High Point Hug

Designed by Shannon Thomas

High Point is an area in the Pacific Northwest (Washington State) where we escape the real world and get back in touch with nature.... the deep forest, the mist, the serenity of the silence. As I work at home, I throw this wrap around my shoulders and it reminds me of the deep green of the trees and the gray of the clouds and gentle rains. I feel embraced by nature again.

Skill Level:

Intermediate

Skills Needed:

Knit, purl, picking up stitches, chart reading (optional)

Sizes:

One size fits most

Materials:

Cascade Yarns® Heritage 150; 75% Merino Superwash Wool, 25% Nylon,
150 g (5.25 oz) / 492 yds (450 m)
2 hanks of color #5695 (Radiant Orchid)
US 4 (3.5 mm)/40" or longer circular knitting needle
Tapestry needle
Stitch Markers

Gauge:

28 sts x 36 rows = 4" (10 cm)

Stitch Glossary:

K	= Knit
k2tog	= Knit 2 stitches together
k3tog	= Knit 3 stitches together
No stitch	= This stitch is ignored
P	= Purl
p2tog	= Purl 2 stitches together
p3tog	= Purl 3 stitches together
pm	= Place marker
Ssk	= Slip 2 stitches knitwise, then knit slipped stitches together

Ssp	= Slip 2 stitches knitwise, then return slipped stitches to left needle and purl 2 together through back loop
Sssk	= Slip 3 stitches knitwise, then knit slipped stitches together
Sssp	= Slip 3 stitches knitwise, then return slipped stitches to left needle and purl 3 together through back loop
s1-k2tog-ssso	= Slip one stitch knitwise, then knit 2 stitches together and pass the slipped stitch over.
s2tog-k1-p2sso	= Slip 2 stitches together knitwise, knit 1, then pass slipped stitches over
s2tog-p1-p2sso	= Slip 2 stitches knitwise, return slipped stitches to left needle, then slip same 2 stitches together through back loop. Purl 1, then pass 2 slipped stitches over
Wyif	= With yarn in front
Yo	= Wrap the working yarn over the right needle, from front to back (counter-clockwise)

Notes:

- This wrap is initially created in Stockinette stitch and garter stitch with three increase points, creating four sections. THESE INCREASE POINTS CONTINUE THROUGHOUT THE WORK, EVEN WHILE IN THE CHARTING/LACE WORK.
- Edge treatment is accomplished by slipping first stitch of each row purlwise with yarn in front. Then move yarn to back for the following knit stitch. At the beginning of the piece, stitch markers are recommended, as directed, to provide consistent increase lines.
- You may choose to place markers every 10 stitches while working lace section. There will be times that the marker divides stitches which are to be decreased together, e.g. k2tog with a marker between the two respective stitches. Remove the marker, decrease as directed, replace marker. If you find it out of place on the next round, simply get your stitch count back in line with 10 stitches between



markers. Evenly grouped stitches of 10 is the important counting aid.

- Final edging is knit lengthwise, attaching the new edge to the live stitches of the lace panels.

Instructions:

CO 8 sts. Set-up by knitting one row, then

Set - up Row:

S1 pw wyif, yo, k1, pm, yo, k1, yo, k1, pm, yo, k1, yo, k1, pm, k1, yo, k1.

Row 1: (RS) S1 pw wyif, (move yarn to back),* K to 1 st before marker, yo, k1, slip marker, yo. Repeat to last 3 sts, K3.

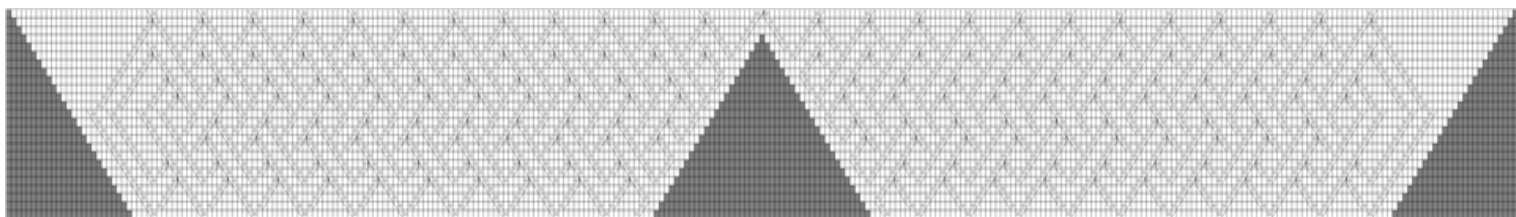
Row 2 (and all even rows to beginning of lace section): Work first section (to first marker) as garter, knitting both sides of work.

Slipping markers as appropriate, work middle two sections in Stockinette stitch, that is, knit on the right side, purl on the wrong side.

Continue alternating these two rows until you have 106 sts between the first and second markers. This will become the first side of the lace panels (see Chart A).



Overall Pattern (See enlarged detail in Chart A and Chart B)



Stitches	
■	No stitch
□	k
▤	ssk
⊙	yo
▥	k2tog
▧	ssk
▨	k3tog



Work all even rows in established pattern (**knit** first and last sections as garter st, **purling** the two middle sections of lace).

Row 1: K3, k2tog, yo, [k8, k2tog, yo] 8 times, k4, [k4, k2tog, yo, k5, yo, ssk] twice, [k8, yo, ssk] 9 times, k3.

Row 3: [K3, k2tog, yo, k1, yo, ssk, k2] 10 times, k2, yo, ssk, k4, k2tog, yo, [k4, k2tog, yo, k1, yo, ssk, k1] 10 times, k2.

Row 5: K3, k2tog, yo, [[k3, yo, ssk, k3, k2tog, yo] 10 times, k3] twice, yo, ssk, k3.

Row 7: K3, k2tog, yo, [[k5, yo, ssk, k1, k2tog, yo] 10 times, k5] twice, yo, ssk, k3.

Row 9: K1, [k2, k2tog, yo] twice, [k3, yo, k3tog, yo, k2, k2tog, yo] 10 times, k6, yo, ssk, [k2, yo, sssk, yo, k3, yo, ssk] 10 times, k2, yo, ssk, k3.

Row 11: K2, [[k1, k2tog, yo, k1] twice, yo, ssk] 11 times, k3, [k1, k2tog, yo, k1, yo, ssk, k2, yo, ssk] 11 times, k3.

Row 13: K3, k2tog, yo, [k2, k2tog, yo, k3, yo, k3tog, yo] 10 times, [k2, k2tog, yo, k3, yo, ssk, k2] twice, [yo, sssk, yo, k3, yo, ssk, k2] 10 times, yo, ssk, k3.

Row 15: K3, k2tog, yo, [k2, k2tog, yo, k4, k2tog, yo] 11 times, k4, [k2, yo, ssk, k4, yo, ssk] 11 times, k2, yo, ssk, k3.

Row 17: K1, [k2, k2tog, yo] twice, k4, k2tog, yo, [k2, k2tog, yo, k1, yo, ssk, k1, k2tog, yo] 10 times, k8, [k2, yo, ssk, k1, k2tog, yo, k1, yo, ssk] 10 times, [k2, yo, ssk, k2] twice, yo, ssk, k3.

Row 19: K3, k2tog, yo, [k2, k2tog, yo, k2] twice, k2tog, yo, [k3, yo, sssk, yo, k2, k2tog, yo] 10 times, k3, [k3, yo, ssk, k2, yo, k3tog, yo] 10 times, k1, [[k2, yo, ssk] twice, k2] twice, k1.

Row 21: K3, k2tog, yo, [k2, k2tog, yo, k2] twice, k2tog, yo, [[k1, yo, ssk, k1] twice, k2tog, yo] 10 times, k1, yo, ssk, k2, [k2, k2tog, yo, k1, yo, ssk, k1, k2tog, yo] 10 times, k2, k2tog, yo, [[k1, yo, ssk, k1] twice, k2] twice.

Row 23: K1, [k1, [k1, k2tog, yo, k1] twice] twice, k2, yo, ssk, [k2, yo, sssk, yo, k3, yo, ssk] 10 times, k4, k2tog, yo, [k3, yo, k3tog, yo, k2, k2tog, yo] 10 times, k1, [k1, [k1, yo, ssk, k1] twice] twice, k2.

Row 25: K3, [k2tog, yo, k1] twice, [k2, k2tog, yo] twice, k4, k2tog, yo, [[k3, yo, ssk, k3, k2tog, yo] 10 times, k3] twice, yo, ssk, k4, [yo, ssk, k2] twice, [k1, yo, ssk] twice, k3.

Row 27: K5, [yo, ssk, k2] twice, k1, yo, ssk, [k1, yo, ssk, k1, k2tog, yo, k1, yo, ssk, k1] 11 times, k1, [k2, k2tog,

yo, k1, yo, ssk, k1, k2tog, yo] 11 times, k1, k2tog, yo, k1, [k2, k2tog, yo] twice, k5.

Row 29: K7, [yo, ssk, k2] twice, k1, yo, ssk, [k2, yo, k3tog, yo, k2, k2tog, yo, k1] 11 times, k2, [k3, yo, ssk, k2, yo, sssk, yo] 11 times, [k2, k2tog, yo, k1] twice, k1, k2tog, yo, k7.

Row 31: K9, [yo, ssk, k1] twice, k2, yo, ssk, [[k1, k2tog, yo, k1] twice, yo, ssk] 11 times, k4, k2tog, yo, [[k1, yo, ssk, k1] twice, k2tog, yo] 11 times, k2, [k1, k2tog, yo] twice, k9.

Row 33: K10, [k1, yo, ssk] twice, [k3, yo, k3tog, yo, k2, k2tog, yo] 10 times, k3, yo, k3tog, yo, [k2, k2tog, yo, k3, yo, ssk, k2] twice, yo, sssk, yo, [k3, yo, ssk, k2, yo, sssk, yo] 10 times, k2, [k1, k2tog, yo] twice, k11.

Row 35: K14, [yo, ssk, k1] twice, k1, k2tog, yo, [k2, k2tog, yo, k4, k2tog, yo] 11 times, k4, [k2, yo, ssk, k4, yo, ssk] 11 times, k2, yo, ssk, k1, [k1, k2tog, yo] twice, k14.

Row 37: K15, [k1, yo, ssk] twice, [[k1, k2tog, yo, k1] twice, yo, ssk] 11 times, k1, k2tog, yo, k10, yo, ssk, k1, k2tog, yo, [[k1, yo, ssk, k1] twice, k2tog, yo] 11 times, k1, k2tog, yo, k16.

Row 39: K18, yo, ssk, k1, yo, k3tog, yo, k1, k2tog, yo, [k3, yo, k3tog, yo, k2, k2tog, yo] 11 times, k6, yo, ssk, [k2, yo, sssk, yo, k3, yo, ssk] 11 times, k1, yo, sssk, yo, k1, k2tog, yo, k18.

Row 41: K20, yo, ssk, [k2tog, yo, k2, k2tog, yo, k1, yo, ssk, k1] 12 times, k2, [k1, k2tog, yo, k1, yo, ssk, k2, yo, ssk] 12 times, k2tog, yo, k20.

Row 43: K22, yo, ssk, k1, k2tog, yo, k3, yo, ssk, [[k3, k2tog, yo, k3, yo, ssk] 11 times, k1] twice, k2, k2tog, yo, k3, yo, ssk, k1, k2tog, yo, k22.

Row 45: K24, yo, ssk, [k2tog, yo, k5, yo, ssk, k1] 12 times, k1, [k1, k2tog, yo, k5, yo, ssk] 12 times, k2tog, yo, k24.

Row 47: K26, [yo, k3tog, yo, k7] 12 times, yo, ssk, k1, k2tog, yo, [k7, yo, sssk, yo] 12 times, k26.

Row 49: K19, [k8, k2tog, yo] 12 times, k9, yo, k3tog, yo, k1, [k8, yo, ssk] 12 times, k27.

Finishing

Work 6 rows even, following the pattern established at the beginning of the work, prior to lace. In other words, work the garter stitch panels at the left and right edges, Stockinette in the middle, increasing at the markers.

Ensure your final row completed is right-side row.

Leave all stitches live on the needle as you begin the final edge.



Rather than slipping your first stitch as you have been, simply knit as directed.

Working on **wrong side row**, cable cast-on 6 sts.

Set-up:

K 5, k2tog (this is joining the last stitch of your cable cast on stitches with one live stitch from the body).

Knit a second set-up row to get your work away from the body and back to the edge, then

Row 1: k3, yo, k2tog, k2tog (joining to body). Turn work to continue on these 6 sts only throughout.

Row 2: Sl kw, k2, yo, k2tog, k1.

Continue in this manner, joining the new edge to the live stitches as you work.

When all live stitches of the body have been consumed, bind off 6 edge stitches.

Weave in tails.

Block to enhance lace stitch definition.



Chart A (Right side of Overall Chart)

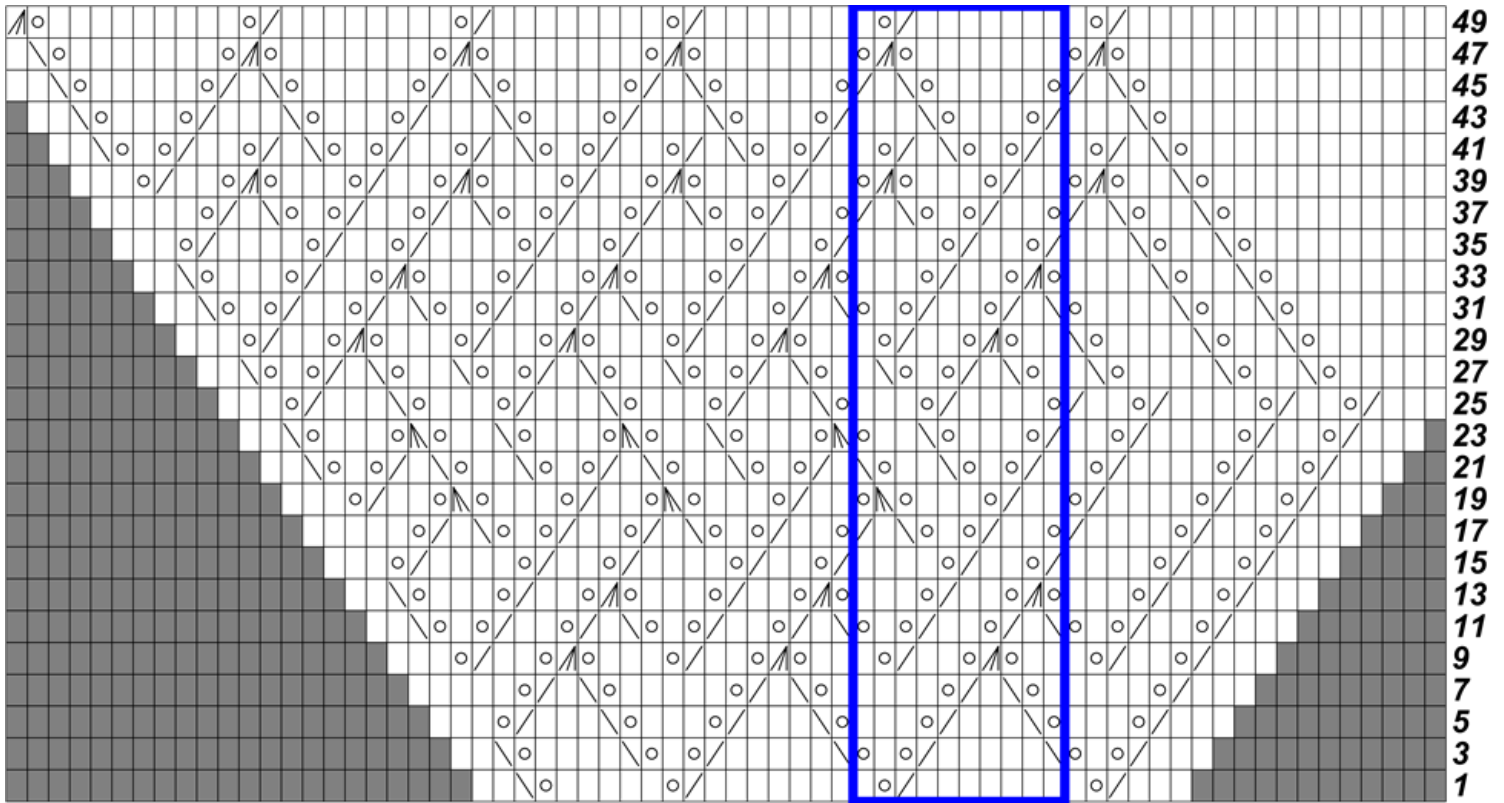


Chart B (Left side of Overall Pattern)

