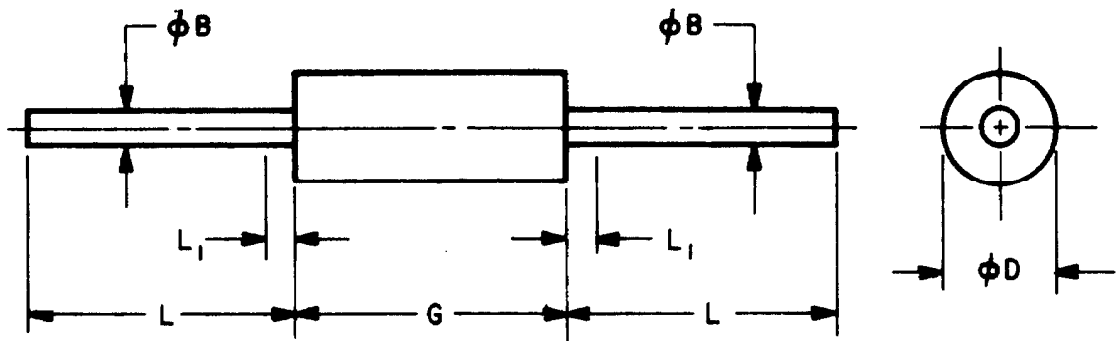


# DO - 34



MILLIMETER DIMENSIONS ARE DERIVED FROM ORIGINAL INCH DIMENSIONS

| SYMBOL   | INCHES |      | MILLIMETERS |      | NOTES | ISSUE |                   |
|----------|--------|------|-------------|------|-------|-------|-------------------|
|          | MIN.   | MAX. | MIN.        | MAX. |       |       |                   |
| $\phi B$ | .018   | .022 | .458        | .558 | -     | A     | RELEASE NO. 5327  |
| $\phi D$ | .050   | .075 | 1.27        | 1.90 | 1     | B     | RELEASE NO. 5327D |
| G        | .085   | .120 | 2.16        | 3.04 | 1     |       |                   |
| L        | .500   | -    | 12.70       | -    | -     |       |                   |
| $L_1$    | -      | .050 | -           | 1.27 | 2     |       |                   |

**NOTES:**

1. PACKAGE CONTOUR OPTIONAL WITHIN CYLINDER OF DIAMETER  $\phi D$  AND LENGTH  $G$ . SLUGS, IF ANY, SHALL BE INCLUDED WITHIN THIS CYLINDER BUT SHALL NOT BE SUBJECT TO THE MINIMUM LIMIT OF  $\phi D$ .
2. LEAD DIAMETER NOT CONTROLLED IN THIS ZONE TO ALLOW FOR FLASH, LEAD FINISH BUILD-UP, AND MINOR IRREGULARITIES OTHER THAN SLUGS.

ITEM NO. 234F

|  |                         |                   |                         |
|--|-------------------------|-------------------|-------------------------|
| <b>JEDEC PUBLICATION 95</b><br>REGISTERED OUTLINES FOR SEMICONDUCTOR DEVICES | OUTLINE<br><b>DO-34</b> | ISSUE<br><b>B</b> | DATE<br><b>APR 1968</b> |
|--|-------------------------|-------------------|-------------------------|