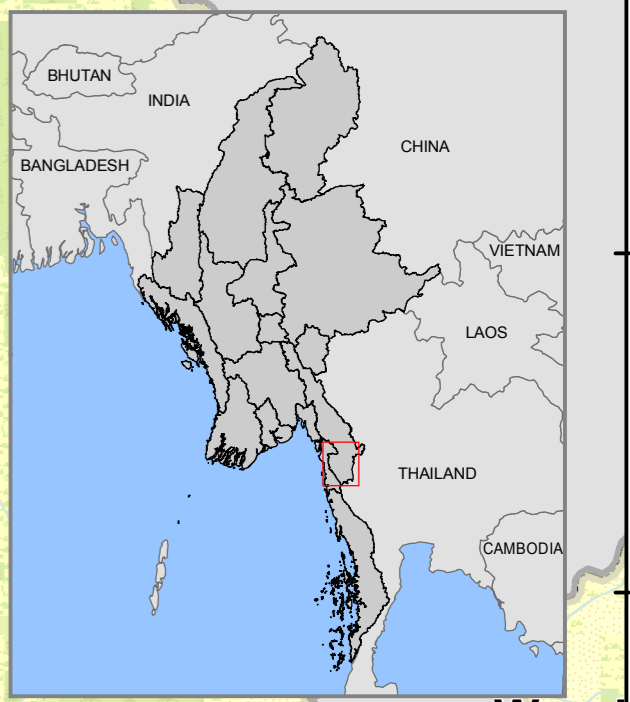
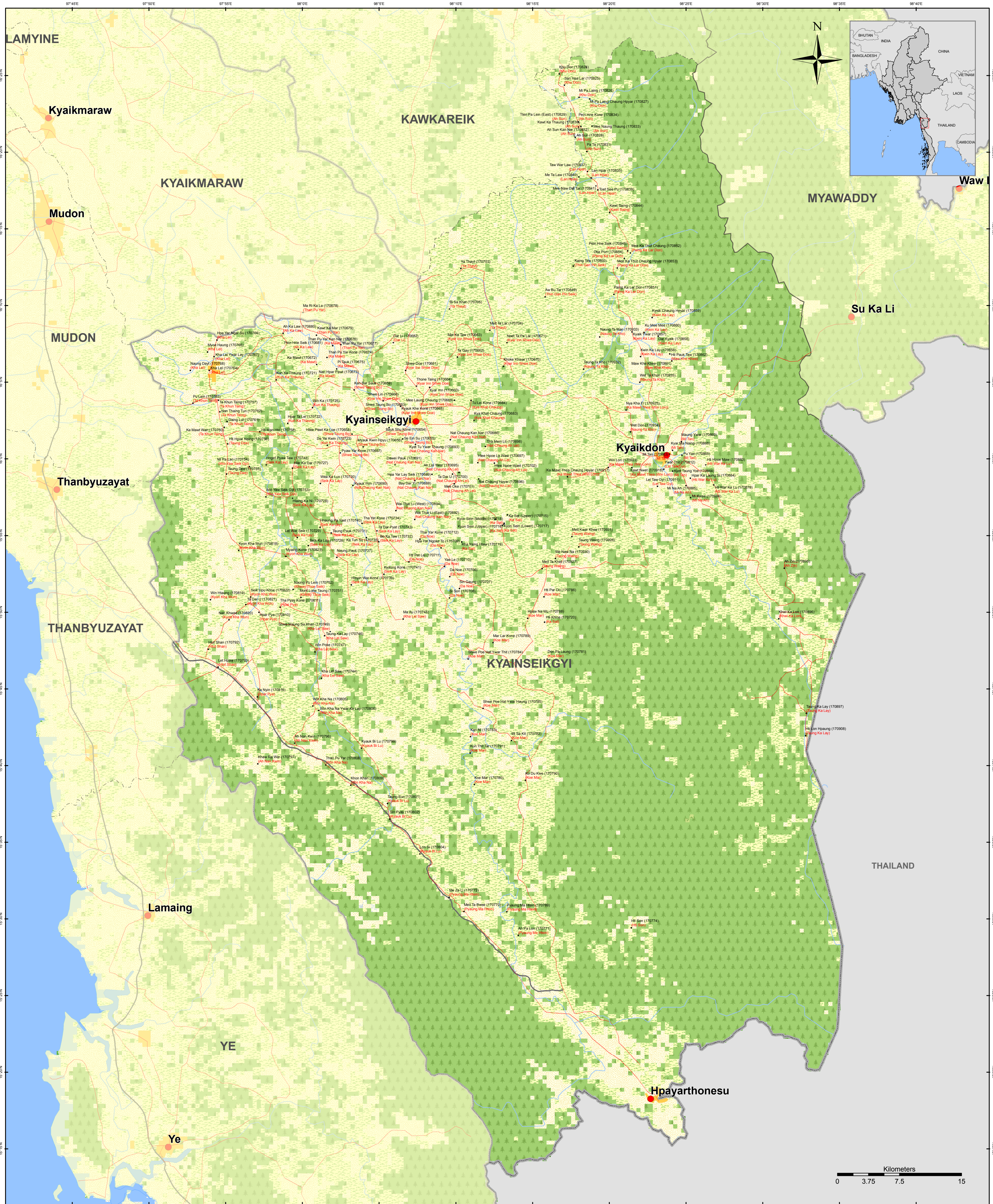




Kyainseikgyi Township - Kayin State



Map ID: MIMU154v04
Creation Date: 3 May 2016,A1
Projection/Datum: Geographic/WGS84

Data Source:
 BASE MAP - MIMU:Boundaries - WFP,modified by MIMU 2008;
 Landcover - LP DAAC - MCD12Q1 2011 V.5 IGP (Type1)
 Place name - Ministry of Home Affair (GAD)
 translated by MIMU

Map produced by the MIMU - E-mail: info.mimu@undp.org
 Website: www.themimu.info

Legend

• Village	— Shore	Crop and Vegetation	Snow Ice
● Town	- - - Township Boundary	Forest	Urban Build-up
— Road	— District Boundary	Mixed Forest	Bare Land
— Railway	— State Boundary	Grassland	Wetland
	— International Boundary	Shrubland	Water
	Non-Perennial/Intermittent/Fluctuating		
	Perennial/Permanent		

Village Name
Ting Kawk (166214)
(Ting Kawk)
 Pcode
 Village Tract Name

Myanmar Information Management Unit (MIMU) is a common resource of the Humanitarian Country Team (HCT) providing information management services, including GIS mapping and analysis, to the humanitarian and development actors both inside and outside of Myanmar.

NOTE: Due to the limited space of label for Villages, some Village's name will not be appeared on this map.

Copyright © Myanmar Information Management Unit 2016. May be used free of charge with attribution. For more information see <http://www.themimu.info/license>. This notice cannot be modified or removed.