

408 Magpie



Magpie. Adult (01-V).

MAGPIE (*Pica pica*)

IDENTIFICATION

40-51 cm (of which tail 16-20). Black and white plumage, with green glossed tail and wing; very long tail.

SIMILAR SPECIES

This species is unmistakable.

SEXING

Plumage of both sexes alike. Size and weigh can be helpful with extreme specimens: **male** with wing longer than 190 mm and weigh bigger than 245 gr. **Female** with wing shorter than 180 mm and weigh smaller than 170 gr. **CAUTION:** many birds cannot be sexed due to size overlap.

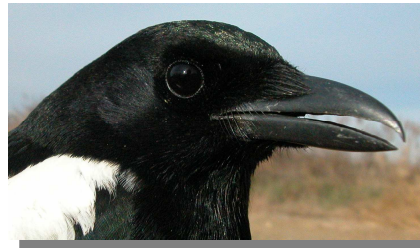
AGEING

3 types of age can be recognized:

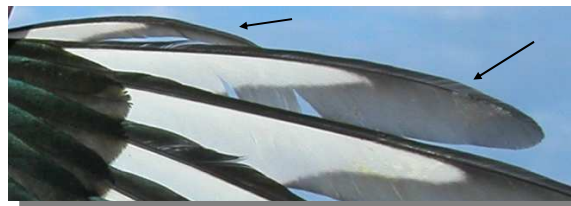
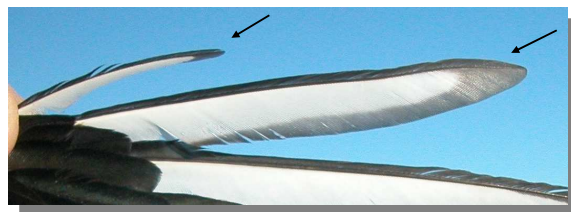
Juvenile with fresh plumage; large dark patch on outer 9th-10th primaries (bigger than 10 and 16 mm each); iris blue grey; a little bluish-grey bare skin around eyes.

1st year autumn/2nd year spring with moult limit between moulted glossy wing feathers and duller **juvenile** retained alula and primary coverts; worn and dull tail; outer primaries like **juveniles**..

Adult with glossy black and green plumage on wing and tail, without moult limits; small dark patch on outer 9th-10th primaries (smaller than 13 and 15 mm each), iris dark; no bare skin around the eye.



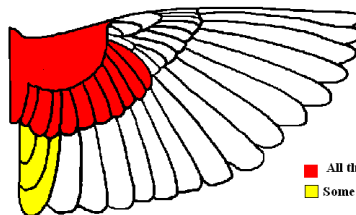
Magpie. Ageing. Pattern of iris and bare skin around the eye: top adult; bottom juvenile.



Magpie. Ageing. Pattern of the dark patch on primaries 9th and 10th: top adult; bottom juvenile.

MOULT

Complete **postbreeding** moult, usually finished in October. Partial **postjuvenile** moult including body feathers, lesser, median and greater coverts; some specimens retain outer greater coverts and others moult tertials; usually finished late September.



Magpie. Extent of postjuvenile moult.

■ All the specimens
■ Some specimens

408 Magpie

PHENOLOGY

| I | II | III | IV | V | VI | VII | VIII | IX | X | XI | XII |
|---|----|-----|----|---|----|-----|------|----|---|----|-----|
| | | | | | | | | | | | |

STATUS IN ARAGÓN

Resident. Widely distributed throughout the Region, absent from the highest zones of the mountainous areas and the most deforested areas of the Ebro Basin.



Magpie. 2nd year (07-I)



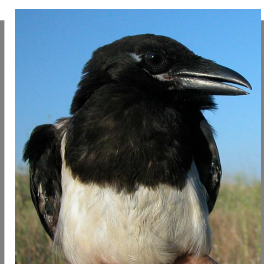
Magpie. Juvenile (13-VII)



Magpie. Young (11-VI)

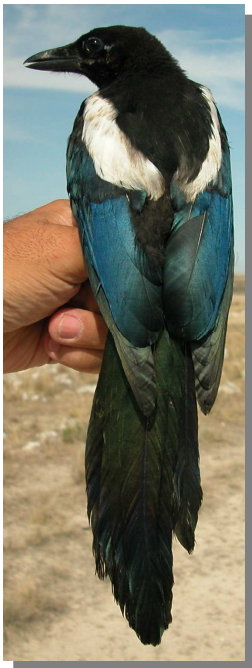
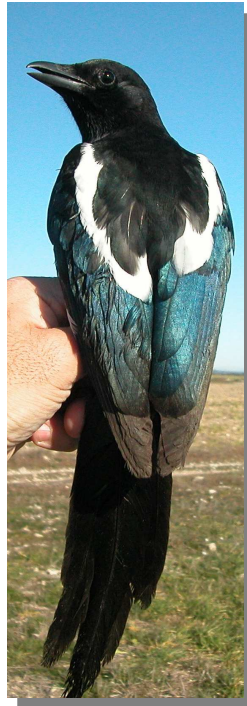


Magpie.
Iris colour:
from top to
bottom:
adult (01-
I); 2nd year
(07-I); ju-
venile (08-
VII); young
(11-VI).



Magpie. Breast pattern: left adult (01-I); right juvenile (29-VII)

408 Magpie

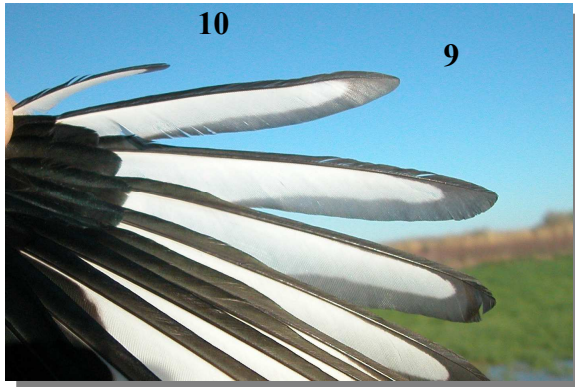


Magpie. Upperparts pattern: top left adult (01-I); top right 2nd year (07-I); left juvenile (08-VII)



Magpie. Tail pattern: top left adult (01-I); top right 2nd year (07-I); left juvenile (08-VII)

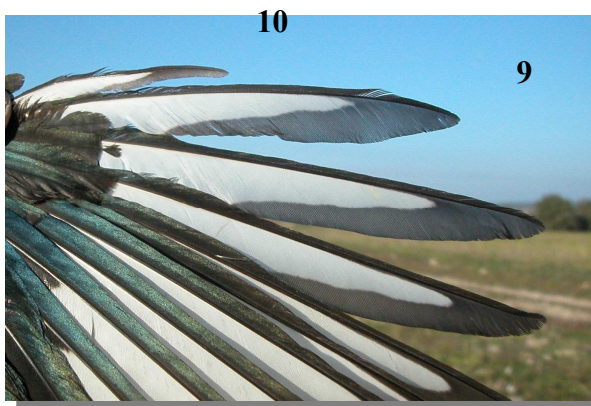
408 Magpie



Magpie. Adult: extent of dark patch on tip of 9th and 10th primaries (08-III).



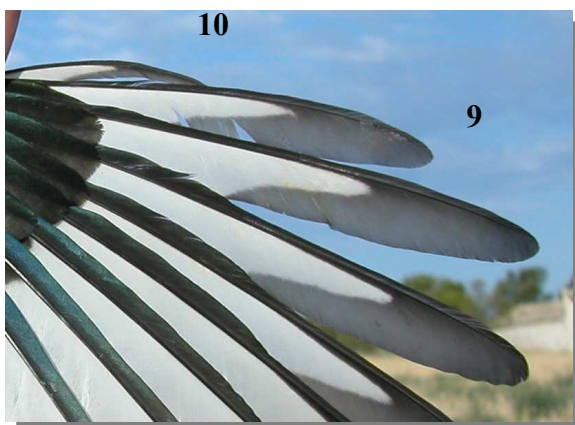
Magpie. Adult: pattern of alula (08-III).



Magpie. 2nd year: extent of dark patch on tip of 9th and 10th primaries (07-I).



Magpie. 2nd year: pattern of alula (07-I).



Magpie. Juvenile: extent of dark patch on tip of 9th and 10th primaries (08-VII).



Magpie. Juvenile: pattern of alula (08-VII).



Magpie. Adult: pattern of wing (08-III).

408 Magpie



Magpie. 2nd year: pattern of wing (07-I).



Magpie. Juvenile: pattern of wing (08-VII).