

contact::

Gesa Witthöft

gesa.witthoeft@tuwien.ac.at

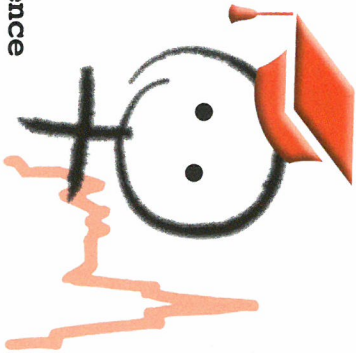
Petra Hirschler

petra.hirschler@tuwien.ac.at

Doris Damyanovic

doris.damyanovic@boku.ac.at

within the framework of



8th European Conference
on Gender Equality in Higher Education

September 3-5, 2014 · Vienna University of Technology, Austria

<http://gender2014.conf.tuwien.ac.at>



TECHNISCHE
UNIVERSITÄT
WIEN
Vienna University of Technology



bmwfw
Federal Ministry of
Science, Research and Economy

ON STAGE

In Szene setzen – On Stage Vienna 2014!

September 3rd - October 31st 2014

Vienna University of Technology

In Szene setzen - On Stage Vienna 2014 !

Architects, under the supervision of Barbara Zibell and Eva M. Álvarez. From there Eva M. Álvarez, in 2012, took *On Stage* to Valencia.

In Szene setzen – On Stage Vienna 2014! sheds a different light on professionals in architecture, urban and spatial planning. The exhibition focuses on the gender sensitive work and personal background of women, in a professional world dominated by men. The aim is to foreground women in architecture, without discrimination or idolization, in contrast to the abundance of male star architects, often presented as role models in education or professional glossies. Presenting life experiences in relation to planning may open the path to a more critical understanding.

Coordinated by Doris Damyanovic, Petra Hirschler and Gesa Witthöft, students from the Vienna University of Natural Resources and Life Sciences developed *On_Stage_Vienna 2014!*.


Inspired by the *La Mujer Construye* exhibition in 1999, Lidewij Trummers brought *On Stage* to Hanover in 2011 where it flourished through the collaboration of local students and members of the Lower Saxony Chamber of

In Szene setzen - On Stage Vienna 2014! (the journey is the reward) is a fusion of the preceding exhibitions. The guiding system is based on a color concept, with each color corresponding to a specific floor. As the exhibition is held within the framework of the *8th European Conference on Gender Equality in Higher Education*, the conference room bear the names of women portrayed within the exhibition. The remaining portraits are displayed along the colored path to the conference rooms. During the conference, several screens within the building will be streaming a teaser on the exhibition.

Hanover

Valencia

Vienna

	
Eva Maria Álvarez architect "As an architect I always thought about gender issues, without realizing that these thoughts had belonged to gender topics."	
Karin Bukies landscape architect "The work in village renewal is satisfyin for me because I'm dealing with many different people and experiencing a lot of commitment"	
Karin Kellner architect "Networking is very important , especially when a woman is on maternity leave"	
Barbara Maria Kirsch architect "The work of architects on small, possibly even unattractive building projects is an important part of building culture"	
Johanna Spalink-Sievers landscape architect "I wasn't born a natural employer, but it's nonetheless going quite well actually"	
Lidewij Tummers architect "Processes of design and creation require careful attention, experimentation and enough time to build insight, confidence and collaboration"	
Maria Viñé - Martina Voser architects "Undoubtedly, the buildin industry is still a male dominated field of expertise - women are still very under represented."	
Lizete Rubano architect	
Cristina Alonso urban planner	
Ines Novella architect	
Ulrike Böcker mayor „Activity by itself is something very effective“	
Dipl-Ingⁱⁿ Drⁱⁿ Heide Studer office „Gender Mainstreaming is a necessary step to establish gender justive in width“	
O Univ Profⁱⁿ Drⁱⁿ -Ingⁱⁿ Gerda Schneider University " The place of women: Central and Autonomic"	
Mag^aDipl-IngⁱⁿDrⁱⁿ Theresia Oedl-Wieser science "It depends very much on the commitment of individuals"	
Dipl-Ingⁱⁿ Eva Kail administration „A general problem is: How does gender become mainstream?“	
Dipl-Ingⁱⁿ Jutta Kleedorfer administration „Common good comes always before obstnacy“	
Architektin Dipl-Ingⁱⁿ Helga Lassy office "Gender sensitive planning should be a matter of course"	

Katja Ahad architect "Architects who have never experienced family life as it should be will always find it hard to understand what exactly a family life is and needs."	
Sabine Rebe architect "Each detail in the plan could be important to peoples lives"	
Niloufar M. Aliha architect "In general, old cultural behaviours combined with religious views both act as obstacles for women to achieve equality with men in society"	
Alison Brooks architect "The cost of childcare is the 'number one reason' women leave their profession"	
Jannina Cabal architect "...sustainable design means relating people with their natural environment, complying with the principles of economic, social and ecological sustainability..."	
Brigitte Nieße architect "One of the advantages is that we can do what we want and at the same time want what we do"	
Shiela Sri Prakash architect "As a professional dancer, I think that I can feel the space better than others. I can understand the flow of space and look inside it."	
Ines Moisset architect	
Agatha Dzianach interior architect	
Lola Domenech architect	
Marilda Azulay architect	
Dipl-Ingⁱⁿ Sybilla Zech university, office „More women in the planning imply a greater consideration of gender issues“	
Dipl.-Ingⁱⁿ Christine Itzlinger administration „Planning is more than extrapolate the own worldview“	
Dipl-Ingⁱⁿ Hanna Posch office "For many people the concept of gender mainstreaming has become real in recent years"	
Dipl-Ingⁱⁿ Martina Jauschneg office „Gender makes diversity visible“	
Dipl-Ingⁱⁿ Drⁱⁿ Susanne Staller office „Every person should have the opportunity to locate themselves in a continuum between male and female“	
Dipl-Ingⁱⁿ Bente Knoll office "What conceptions of a just society are one's own actions on?"	
Margarete Schütte-Lihotzky architect "Architecture is closely bound to all social issues and is undoubtedly the most popular form of art."	

as it should be
a family life is
and needs."

peoples lives"

religious views
with men in
society"

women leave their
profession"

relating people with their natural
environment, complying with the principles of economic, social and
ecological sustainability..."

we want and at the
same time want what we do"

the space better
than others. I can understand the flow of space and look inside it."

consideration of
gender issues"

Planning is more than extrapolate the own
worldview"

gender mainstreaming has
become real in recent years"

Gender makes diversity visible"

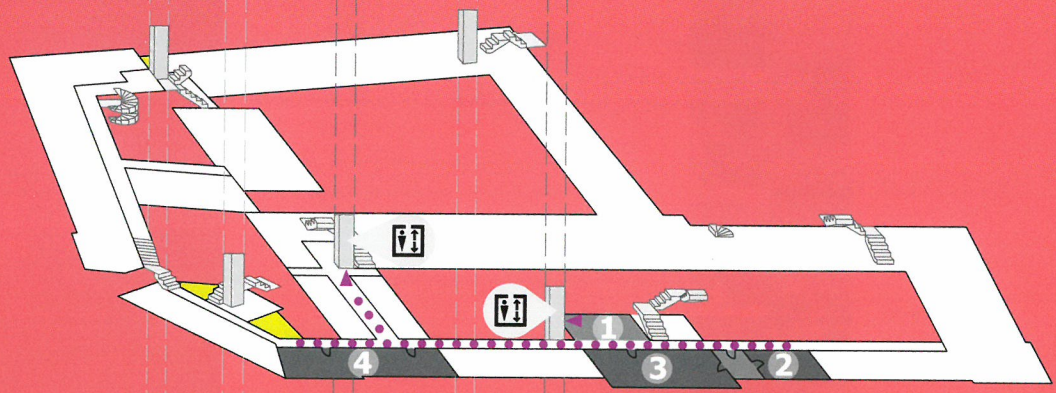
locate themselves in a
continuum between male and female"


actions on?"

and is undoubtedly
the most popular form of art."

Valencia

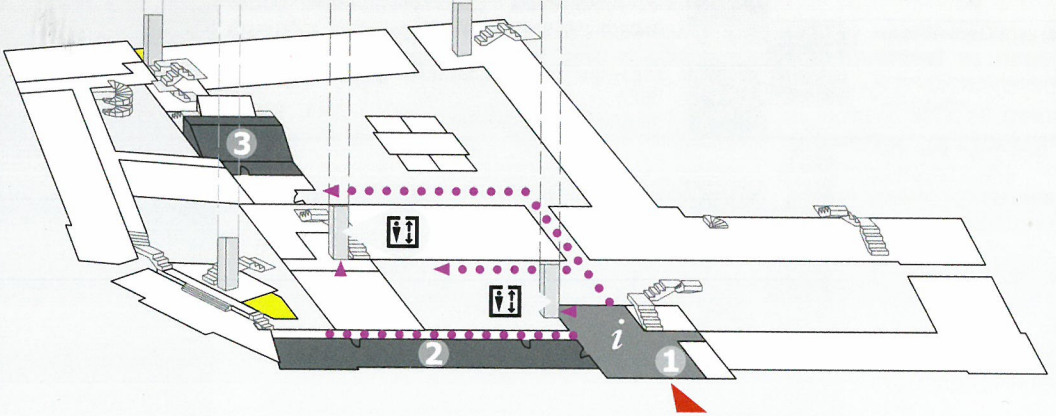
1



- 1**  Foyer 1.OG
- 2** **Ines Novella**
Boecklsaal
- 3** **Cristina Alonso**
Festsaal
- 4** **Marilda Azulay**
Sitzungszimmer Rektorat

Vienna

0



- 1** **Martina Jauschneg**
Foyer EG
- 2** **Eva Kail**
Prechtlsaal
- 3** **Margarete Schütte-Lihotzky**
HS 7

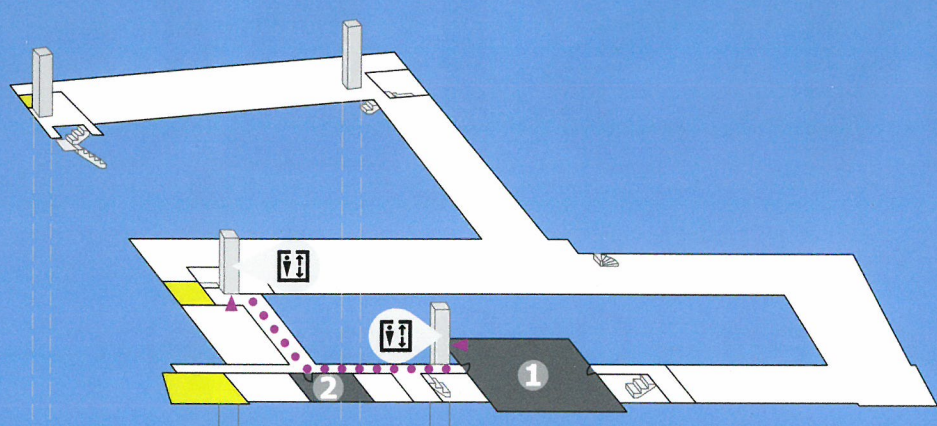
Map Legend:

-  Main Entrance Karlsplatz
-  Barrier-free
-  Toilets

Notes

Vienna

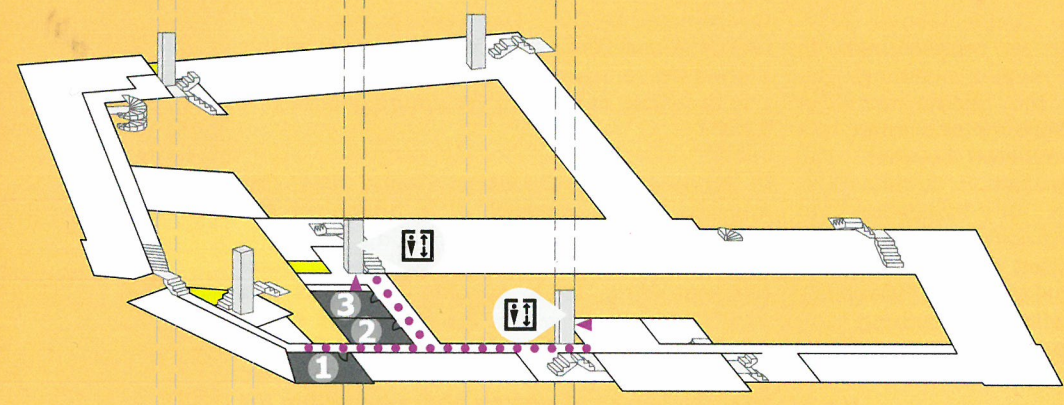
4



- 1 Sibylla Zech**
Kuppelsaal
- 2 Theresia Oedl-Wieser**
Sem. Kuppel

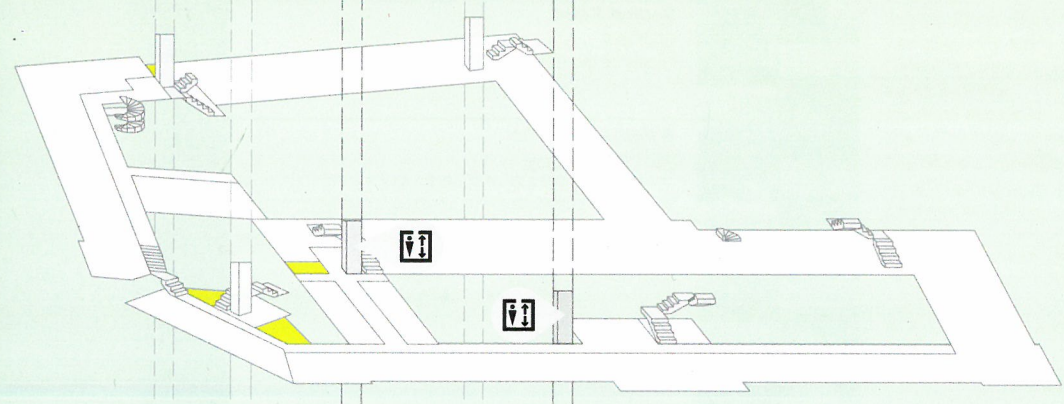
Hanover

3



- 1 Brigitte Nieße**
Sem. 212/232
- 2 Alison Brooks**
HS 15
- 3 Eva Maria Álvarez**
HS 14A

2



No Congress Facilities