



**Langh Ship**

# Ice classed vessels equipped with scrubbers





## M/S AILA AND M/S LINDA

Built by J.J.Sietas Hamburg 2007, Type 174a  
 Germanischer Lloyd +100 A 5 E 4, Multi purpose vessel,  
 Equipped for Carriage of Containers, IW, NAV-0, SOLAS II-2,  
 Reg. 19, G, + MC E4 Aut

### Particulars

Ice Class		Finnish/Swedish 1A Super
IMO No.	m/s Linda	9354325
	m/s Aila	9354337
Call sign	m/s Linda	O J M L
	m/s Aila	O J M M
Flag and Crew		Finnish

### Register tonnage

GT/NT		9131 / 4205
Deadweight	m/s Linda	11487 tdw
	m/s Aila	11497 tdw

### Principal dimensions

Length over all	141.20 m
Breadth over all	21.55 m
Draught	8.60 m
Height of mast above keel	abt. 42 m
when tilted	abt. 38.6 m

### Engine equipment

1 main engine WÄRTSILÄ 8L46C	8400 kW
1 shaft generator	2150 kVA
1 bow thruster	800 kW
1 hybrid scrubber	Langh Tech

### Service speed

17.7 knots

### Tank capacity

Water ballast	4430 m <sup>3</sup>
Fresh water	120 m <sup>3</sup>
Fuel oil	840 m <sup>3</sup>
Gas oil	192 m <sup>3</sup>

### Radio

GMDSS A3

### Max permitted uniform loads

Tank top, holds 2,3,4	18 t / m <sup>2</sup>
Weather deck hatch covers	1.75 t / m <sup>2</sup>
1st deck in front of deck house	3.85 t / m <sup>2</sup>

### Cargo hold capacity

4 holds fitted with cell-guides / 4 hatches  
 Hydraulic operated folding steel hatch covers.

Each 40' compartment in holds and on the deck can be operated independently from next compartment.

Hatch No. 1 (clear opening)	12.57 m x 13.03 m
Hatch No. 2 (clear opening)	12.72 m x 18.24 m
Hatch No. 3 (clear opening)	29.41 m x 18.24 m
Hatch No. 4 (clear opening)	25.85 m x 18.24 m

Hold No. 1	1220.93 m <sup>3</sup>	43117 cuft
Hold No. 2	2256.95 m <sup>3</sup>	79703 cuft
Hold No. 3	6651.77 m <sup>3</sup>	234905 cuft
Hold No. 4	5602.87 m <sup>3</sup>	197863 cuft

### Container capacity

	20' + 40'	40' + 20'	45' + 40' + 20'	30' + 40' + 20'
On deck	617+ 4	286+ 53	178+ 82 + 12	273+ 78 + 18
In hold	282+ -	134+ 14	54+ 80 + 14	82+ 80 + 12
Total	899+ 4 alt.	420+ 67 alt.	232+162+ 26 alt.	355+158+ 30

Equivalent	907 TEU
Stability 20' containers of 14 t each	578 units

### Reefer plugs

In holds	100
On deck	100

### Container stack loads

Inner bottom		
Hold 1+2	per 20' containers	96 t
	per 40' containers	130 t
Hold 3	per 20'/30' containers	140 t
	per 40'/45' containers	145 t
Hold 4	per 20' containers	140 t
	per 40' containers	145 t

### On hatch resp. container pedestal (weather deck)

Hatch 1+2	per 20' containers	50 t
	per 30'/40'/45' containers	80 t
Hatch 3+4	per 20' containers	60 t
	per 30'/40'/45' containers	90 t

### In front of deck house on 1st deck

per 20' containers	80 t
per 30'/40'/45' containers	100 t

All details believed to be true but not guaranteed



## M/S LAURA, M/S HJÖRDIS AND M/S MARJATTA

Built by J.J.Sietas Hamburg 1996, type 158, Germanischer Lloyd +100 A5 E3, General Cargo Ship with Double Hull, G, SOLAS-II-2, Reg.19 C2P47, Strengthened for Heavy Cargo, Equipped for Carriage of Containers, Machinery +MC E3 AUT

### Particulars

Ice Class		Finnish/Swedish 1A
IMO Number	m/s Laura	9126223
	m/s Hjördis	9126235
	m/s Marjatta	9126247
Call sign	m/s Laura	O J H H
	m/s Hjördis	O J H I
	m/s Marjatta	O J H J
Flag and crew		Finnish

### Register tonnage

GT/NT		5239/2625
Deadweight	m/s Laura	6535 tdw
	m/s Hjördis	6526 tdw
	m/s Marjatta	6527 tdw

### Principal dimensions

Length over all	119.85 m
Breadth over all	18.14 m
Draught	6.82 m

### Engine equipment

1 main engine WÄRTSILÄ 6L46B	5850 kW
1 shaft generator	1000 kVA
2 auxiliary engines each abt.	430 kVA
1 bow thruster	550 kW
1 hybrid scrubber	Langh Tech

### Service speed

16 knots

### Tank capacity

Water ballast	2486 m <sup>3</sup>
Fresh water	86 m <sup>3</sup>
Fuel oil	460 m <sup>3</sup>
Gas oil	164 m <sup>3</sup>

### Radio

GMDSS A3

### Cargo hold capacity

3 holds / 3 hatch Box shaped, steel floored. Deck hatch covers are hydraulic folding type. Each folding pair is designed for 40' container compartments in accordance with the cargo hold stowage arrangement.

Hydraulic operated tween decks in holds 2 and 3. Cameras for cargo holds monitoring / recording

Cargo hold 1 ventilation 6 air changes / hour  
Cargo hold 2&3 ventilation 2 air changes / hour

Independent dehumidifier unit for each cargo hold, capacity 2100 cum/h/unit

Grain capacity	8251 m <sup>3</sup> / 291 380 CUFT
Bales capacity	7896 m <sup>3</sup> / 275 315 CUFT
Hatch No. 1 (clear opening)	12.66 m x 10.40 m
Hatch No. 2/3 (clear opening)	26.80 m x 15.52 m

### Max permitted uniform loads

Tank top	15.00 t / m <sup>2</sup>
Tweendeck	4.00 t / m <sup>2</sup>
Weather deck hatch covers	1.75 t / m <sup>2</sup>
Timber on weather deck hatch cover	2.00 t / m <sup>2</sup>

### Container capacity

	20'	40' + 20'	45' + 40' + 20'	30' + 40' + 20'
On deck	308	152 + 4	90 + 33 + 4	65 + 87 + 4
In hold	158	78 + 2	24 + 30 + 26	0 + 78 + 2
Total	466 alt.	230 + 6 alt.	114 + 63 + 30 alt.	65 + 165 + 6

Equivalent	466 TEU
Stability 20' containers of 14 t each	320 units

### Reefer plugs on deck

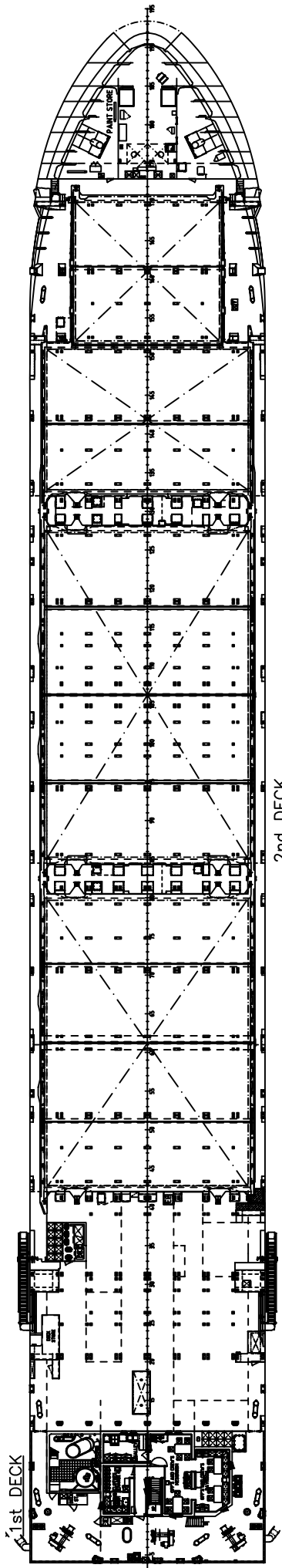
40

### Container stack loads

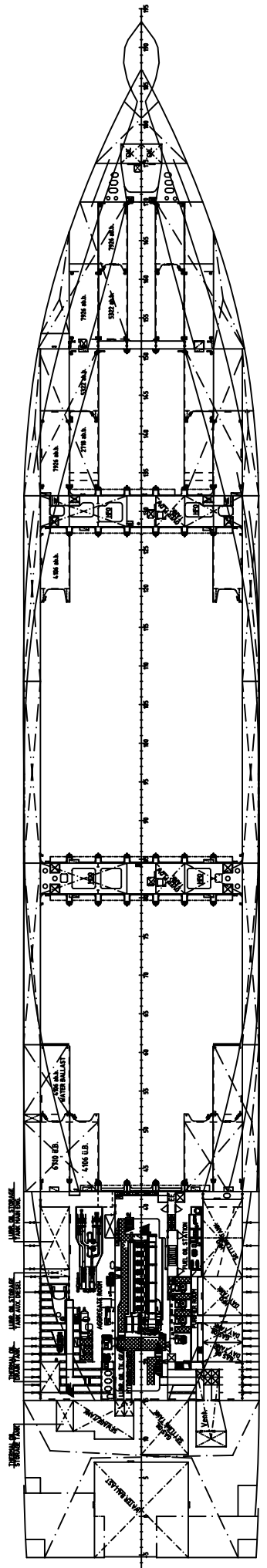
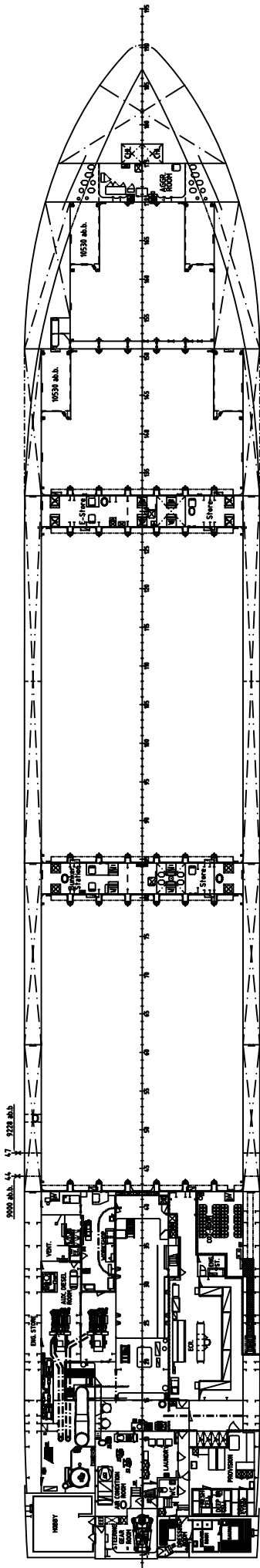
<u>Inner bottom in all holds</u>	
per 20' containers	72 t
per 40'/45' containers	102 t
<u>Tween decks in hold 2 + 3</u>	
per 20' containers	40 t
per 40' containers	60 t
<u>All weather deck hatch covers</u>	
per 20' containers	45 t
per 30' containers	58 t
per 40'/45' containers	60 t
<u>In front of deck house, 1st deck</u>	
per 20'/30' containers	72 t
per 40'/45' containers	102 t

*All details believed to be true but not guaranteed*

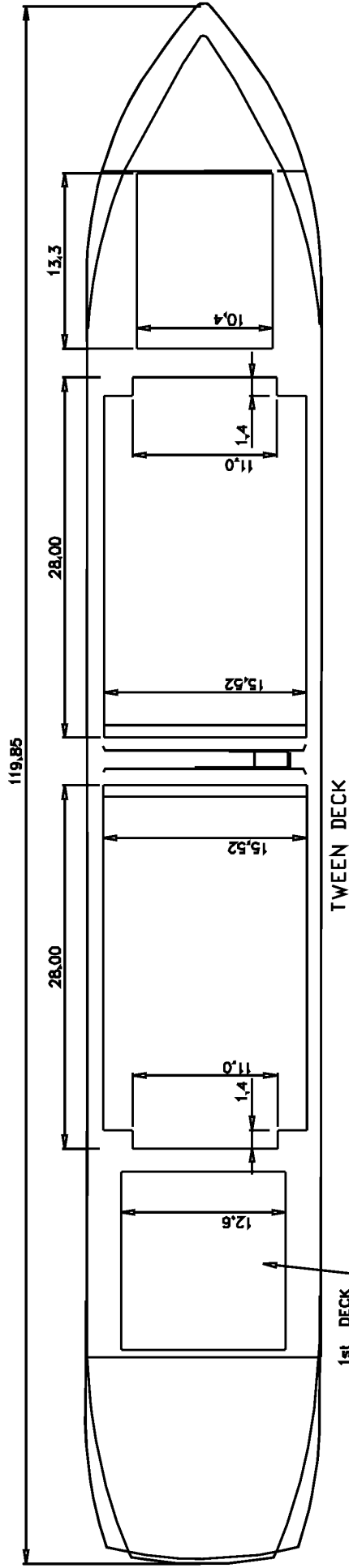
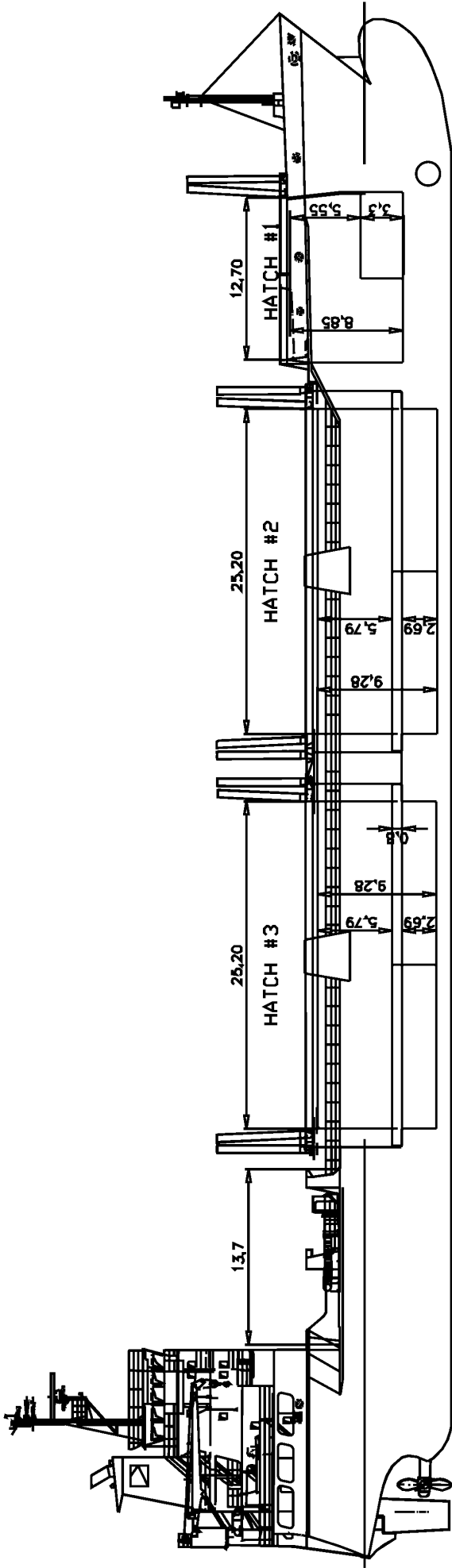




2nd DECK

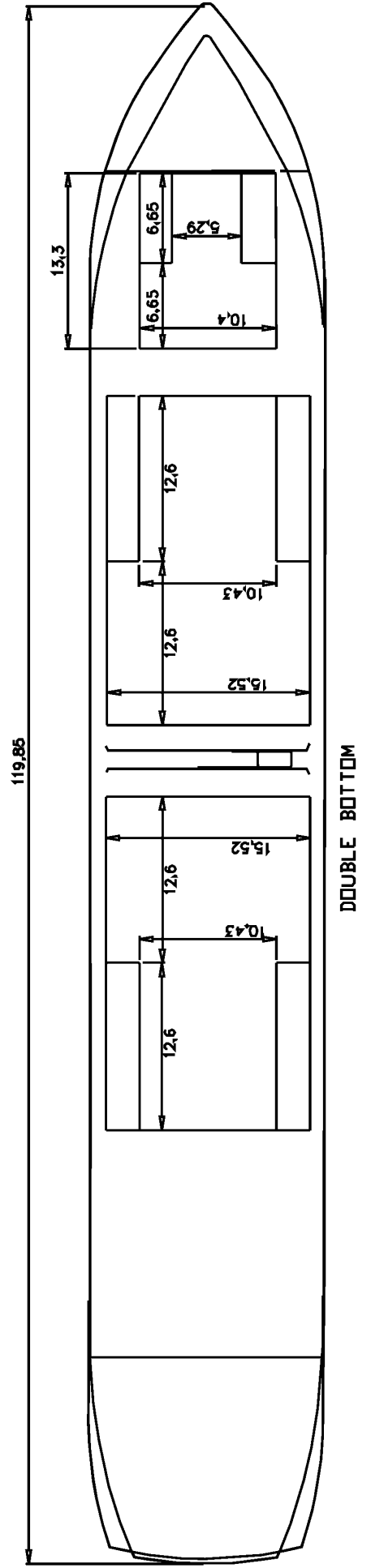






TWEEN DECK

1st DECK



DOUBLE BOTTOM



# Langh Ship

Langh Ship is a Finnish family owned shipping company. The activity got wind in the sails in 1983, when the shipping company bought its first fully owned vessel.

Today the company offers comprehensive solutions for your transportation needs with its modern ships, advantageous methods and skilled personnel.



All Langh Ship's vessels are equipped with hybrid scrubbers capable of continuous closed loop operation. The scrubbers are reliable and light, producing a minimal amount of waste.



Langh Ship Oy Ab, Pikis, Fleet\_2016-02-04-18-52 (lkk)

