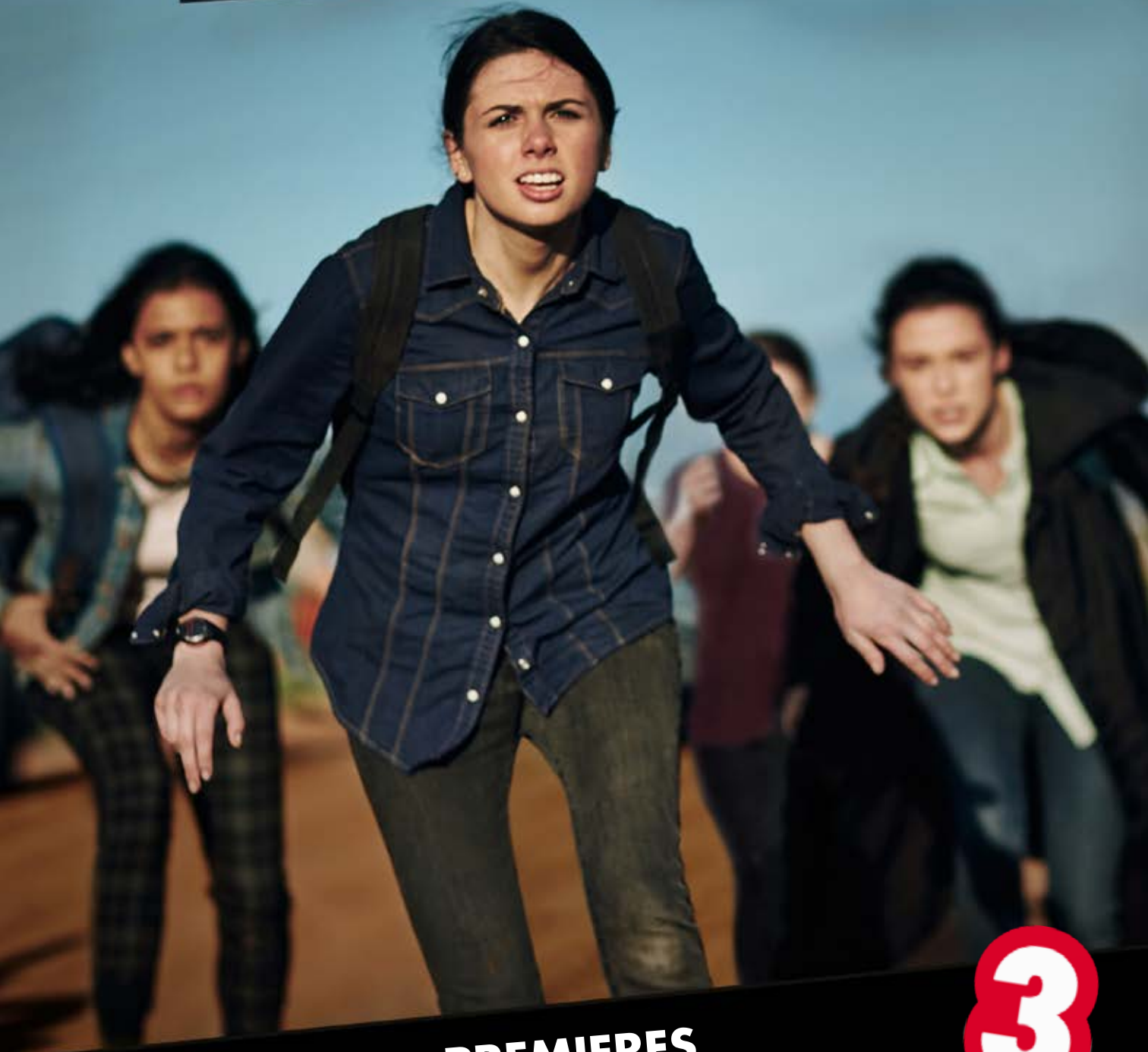


6-PART DRAMA SERIES

TOMORROW

WHEN THE WAR BEGAN



PREMIERES
SATURDAY 23 APRIL 7.30PM



TOMORROW WHEN THE WAR BEGAN

PRODUCTION CREDITS: An Ambience Entertainment production in association with ABC3, Screen Australia and Film Victoria. Based on the novels by John Marsden.

PRODUCERS Michael Boughen and Tony Winley.

EXECUTIVE PRODUCERS Matthew Street and Kim Vecera.
ABC Head of Children's Television Deirdre Brennan.

FOR FURTHER INFORMATION CONTACT:

Tracey Taylor
(03) 9524 2313
0419 528 213
Taylor.tracey@abc.net.au


AMBIENCE


Australian Government

 Screen
Australia

 **FILM VICTORIA**
AUSTRALIA

INTRODUCTION

Based on the best-selling novels of John Marsden, the thrilling six-part drama series **TOMORROW WHEN THE WAR BEGAN** tells the story of a group of young friends whose lives are changed forever, when their hometown becomes a warzone.

Separated from their families they battle to overcome seemingly insurmountable odds and discover that in order to save the things they hold most precious, they must be prepared to sacrifice everything.

A terrific line-up of fresh new stars including Molly Daniels, Jon Prasida, Narek Arman, Madeleine Clunies-Ross, Andrew Creer, Madeleine Madden and Fantine Banulski are joined by some of Australia's most accomplished actors including, Sibylla Budd, James Stewart, Deborah Mailman, Spencer McClaren and Alison Bell. Together they bring to life this epic story that has captured the imagination of millions of young readers around the world.





EPISODE 1

Saturday 23 April 7.30pm

Country girl **Ellie Linton** (Molly Daniels) is at a turning point in her life as she finishes high school and looks to an exciting, unknown future. Instead of celebrating at the annual Wirrawee Show, Ellie takes her friends on a trip they will never forget, to a remote wilderness destination called 'Hell'.

A looming shadow of cyber attacks and military preparedness is just white noise for Ellie as traditional teenage angst takes charge. Her relationship with best friend **Corrie** (Madeleine Madden) is unravelling as Corrie abandons plans for a gap year together in favour of her own dreams and boyfriend **Kevin** (Andrew Creer). Though musician **Lee** (Jon Prasida) shows an interest in Ellie, it's the aspiring social worker **Robyn** (Fantine Banulski) who pines for him. **Homer** (Narek Arman), the resident jokester and troublemaker, has his eyes set on the newly arrived **Fi** (Madeleine Clunies-Ross) but she has her own troubles with a family divided.

The overhead passing of unknown jets unnerves **Ellie**, but it doesn't sway the group from continuing their adventure. Back in town, **Fi**'s troublesome brother **Chris** (Keith Purcell) watches as the same jets scream overhead and violently explode into Wirrawee.

As they arrive back at their homes, **Ellie** and her friends find their parents are missing, the phone network down, homes ransacked and farm animals dead. **Ellie** leads the group to town in search of answers though only one rings true. They are at war. Invading soldiers roam the streets, rounding people up. Despite **Ellie**'s protests the group split apart, checking their homes and searching for their families with a plan to reunite.

Ellie, Corrie and **Kevin** brave the searchlights and heavily armed guards at the showgrounds to try and find their parents. It seems all of Wirrawee's residents are being held captive. A revolt breaks out inside the camp, just as **Ellie**'s own mother **Liz** (Alison Bell), spots **Ellie** outside the barbed wire fence. **Liz** screams at her to escape. The soldiers give chase and a desperate attempt to survive ensues with **Ellie** making a decision that will change her life forever.



Saturday 30 April 7.30pm

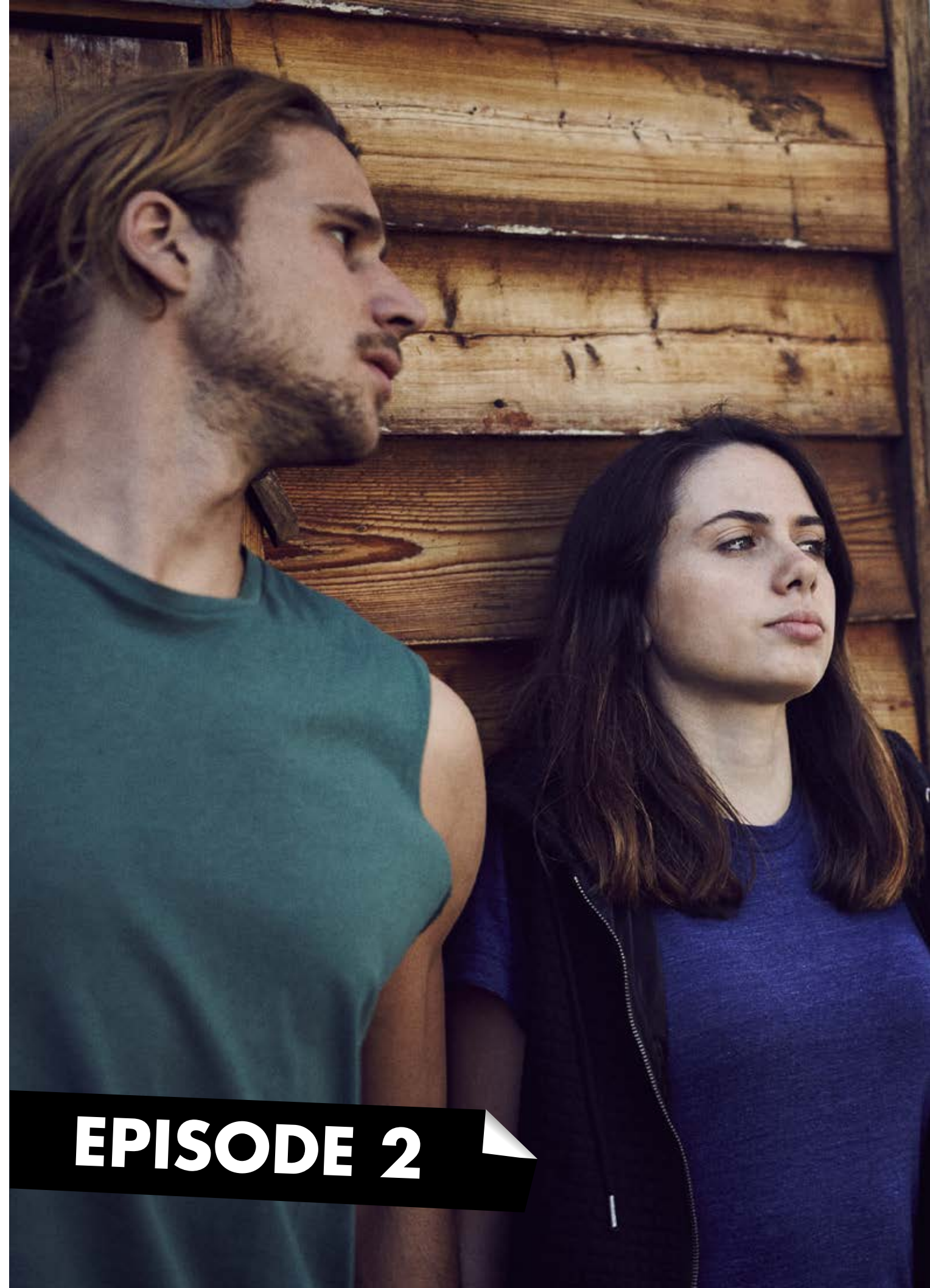
War has begun. In the aftermath of **Ellie**'s escape, the invading army swarms through the streets of Wirrawee. **Lee** is shot in the leg and **Robyn** is forced to carry him to the momentary safety of his house. On the other side of town and with **Homer** at her side, **Fi** returns home. Though she is briefly reunited with her brother **Chris**, a convoy holding their father arrives and **Chris** marches right into their waiting arms.

Meanwhile inside the prison camp, the families of the rebel teenagers try to band together. Nurse **Kath**, **Corrie**'s mother (Deborah Mailman), is singled out by the soldiers and drafted into service at the local hospital, where civilian and soldier casualties are barricaded together.

Ellie's father, **Jack** (Richard Young) and mother, **Liz**, decide the only way to keep their kids safe is to lie about their existence. They spread the word to the other parents, including **Fi**'s mother **Rachel** (Sibylla Budd). Still separated from **Rachel** and unaware of the plan, **Rachel**'s husband **Daniel Maxwell** (Spencer McLaren) discusses his family tree under the watchful eye of the mysterious **Colonel** (James Stewart).

As she is questioned, **Rachel** draws the **Colonel**'s attention. Noting the discrepancies between her story and that of her husband, he threatens her family and demands she point out her daughter's accomplices from the local high school yearbook.

Robyn returns to her friends, without **Lee**, who remains critically injured in town. **Ellie**, **Homer** and a reluctant **Kevin** agree to rescue **Lee**. The plan is to meet up at **Corrie**'s house then proceed to the only safe destination they can think of - Hell.



EPISODE 2



EPISODE 3

Saturday 7 May 7.30pm

The hunt is on. As **Ellie** and her friends try to get some rest, a squad of soldiers close in around them. Surrounded by artillery fire that destroys **Corrie**'s home, the kids run for their lives, back to Hell.

In the wake of information from Rachel regarding the rebel teenagers, the **Colonel** marshals everyone inside the prison camp together. He offers the prisoners a second chance. Co-operate or suffer the consequences. Work groups are hastily organised and the families are split up. **Rachel** finds herself gaining the **Colonel**'s attention, he has set himself up in her old home and invites her to work there as his maid.

He offers **Rachel** a deal, if she informs him about any prisoners planning an escape, he'll agree to keep her family from harm.

Aerial searches continue over Hell, but for now, the group is able to survive. As **Kevin** and **Corrie**'s relationship teeters, **Fi** and **Homer** find themselves growing close. After hearing about his mother, **Lee** heads back to Wirrawee, full of rage. With **Lee** and their only means of transport gone, **Ellie** and the others are forced to make a difficult decision. Leave Hell for more supplies or wait for **Lee** to possibly return.

In town, **Lee** is briefly reunited with his father **Umar** (Alfred Nicdao), who has been forced to cook for the enemy that murdered his wife. But **Umar** is also cultivating his own plans for revenge.

Having taken the opportunity to scavenge **Homer**'s farm, the group take advantage of two unprepared soldiers freeing one of the work camps. **Homer**'s father **George** (Damien Fotiou), begs the kids to leave so that no one back at the prison will be hurt in retaliation. The truth settles in as the kids are once more forced to abandon their families.



Saturday 14 May 7.30pm

Though he struggles with wanting revenge for his mother's death, a conflicted **Lee** sneaks out of Wirrawee and returns to his friends in Hell.

Work inside the prison camp is getting harder every day. Tension within the Maxwell family reaches breaking point as **Chris** and father **Daniel** face unspoken issues of abandonment. **Umar** continues to press **Rachel** to help him poison the **Colonel**.

The teens are besieged with leaflets demanding their surrender. Both **Homer** and **Corrie** want to know where the chasing soldiers are. **Kevin** and **Fi** follow them, leaving **Robyn**, **Lee** and **Ellie** alone.

Robyn hurt by the noticeable relationship developing between **Ellie** and **Lee**, decides to surrender to the enemy. But before she can, she befriends a soldier who has deserted and offers to help him.

Meanwhile at the camp the **Colonel** forces the prisoners to construct an actual prison and **Rachel**, who now knows the truth about the **Colonel**, finally agrees to help **Umar**. It's not long before the opportunity to carry out their plan arises, will they succeed in killing the **Colonel**?

Homer and **Corrie** sneak into an enemy outpost and are almost caught stealing supplies. **Kevin** initially saves them but in a violent chase they barely escape with their lives. Their relief is short lived when the deserting soldier who has been abandoned by **Robyn** spots them returning to Hell. He takes aim and fires with devastating consequences.



EPISODE 4





EPISODE 5

Saturday 21 May 7.30pm

Corrie clings to life in the Wirrawee hospital, with a distraught **Kath** by her side. With **Kevin** now in their custody, the enemy has one goal: find and destroy the remaining rebels.

Meanwhile **Ellie** enlists the help of the remaining group and puts a plan into action to rescue **Corrie**.

Jack believes escape from the prison might be possible and has identified a weakness in the fencing. Despite **Rachel**'s protests, everyone else is on board with his plan.

In order to gain his trust, **Rachel** offers the **Colonel** a deal. Give **Corrie** the medical treatment she needs and **Rachel** will inform him of an escape attempt. An immediate crackdown on security at the prison reveals **Jack**'s weak spot. Though at first the others are furious about her apparent betrayal, **Rachel** gives **Kath** her daughter's medical chart. **Corrie** is going to be ok.

In light of the escape attempt, the **Colonel** addresses the prison crowd, accusing them of being uncooperative. Wounded and barely able to stand, **Kevin** is dragged out before them. If the prisoners don't provide information on the rebels, the **Colonel** will punish **Kevin**.

Ellie and **Lee** sneak into the hospital and find **Corrie**. She is alive, speaking, but her mind is slow and she is heavily drugged. To their horror, **Corrie** flatlines and as the doctors rush in to try and save her, **Ellie** and **Lee** are forced to run. The soldiers at the hospital give chase. The plan is falling apart.



Saturday 28 May 7.30pm

Despite begging the doctors for medicine and even the chance to see her daughter, **Kath** is refused on every count.

As he syphons supplies from the edge of town, **Homer** follows a convoy back to the showgrounds. He watches as the Maxwell and Linton families are locked inside the same cage as **Kevin**, destined to be relocated.

After all they have suffered and lost, **Homer** returns to the rebel group, determined to take the fight back to the enemy. He plans to destroy Cobblers Bay Bridge, which is not only the key to the enemy's supply chain in Wirrawee, but the only pass they can use to relocate their families. **Ellie** watches as **Homer** and a changed, determined and stronger **Fi**, leave to investigate a potential fuel source.

Umar is determined to kill the **Colonel** one way or another. In a moment of solitude, he steals an antenna from a nearby vehicle outside his restaurant; he has a plan. Meanwhile the **Colonel** has discovered the location of Hell.

Having narrowly escaped capture, the group set out their plan to destroy Cobblers Bay Bridge. There is no time to waste. If they wait any longer, their families will be out of their reach for good.



EPISODE 6



ELLIE LINTON

ELLIE LINTON

Ellie is smart, determined and fiercely loyal and a bit of a control freak. She is independent and hard-working, having been raised as an only child on her parents' cattle and sheep farm on the outskirts of Wirrawee.

Ellie organised the camping trip to Hell and following the invasion, she reluctantly takes on the role as leader alongside life-long friend, Homer.

Throughout the invasion, Ellie is torn between her inner moral compass and her desire to protect her friends and family.

MOLLY DANIELS is Ellie Linton

Molly Daniels is a young Australian actress with an extensive and diverse list of credits whose star is on the ascent.

Molly has starred in two seasons of the hit ABC3 show, YOU'RE SKITTING ME. Additional television roles include: VERY SMALL BUSINESS; PARTY TRICKS; THE LIBRARIANS and STORIES FROM THE GOLF. Molly has also appeared in the short film FANS FOREVER.

Molly's multi-faceted talents extend into writing and directing. She wrote for the sketch show, YOU'RE SKITTING ME and has written lyrics for songs in ABC's hit comedy UPPER MIDDLE BOGAN. In 2015 she created, wrote, directed, produced, and featured in her eight-part web series YOUNG LOVE.

Additionally, Molly was drama coach for the extremely successful ABC3 show LITTLE LUNCH, and also wrote and directed the behind-the-scenes featurette.

In 2015 Molly studied at the iO Theatre in Chicago, USA.



HOMER YANNOS

Homer is loud, confident and exuberant. He and his newly widowed father live and work on their farm in Wirrawee.

Homer's reputation as town prankster has set him up to be an asset to the group with his quick thinking and aptitude for risk taking. His relationship with Ellie is strong due to growing up together and he develops feelings for Fi as the series progresses.

NAREK ARMAN is Homer Yannos

Eighteen year-old Narek Arman is best known for his role as Jackson Radovic in one of Australia's most watched and loved television dramas, **PACKED TO THE RAFTERS**.

Narek hails from Sydney's southern suburbs and began acting at age eleven. He has appeared in various theatre productions, television commercials and television series.

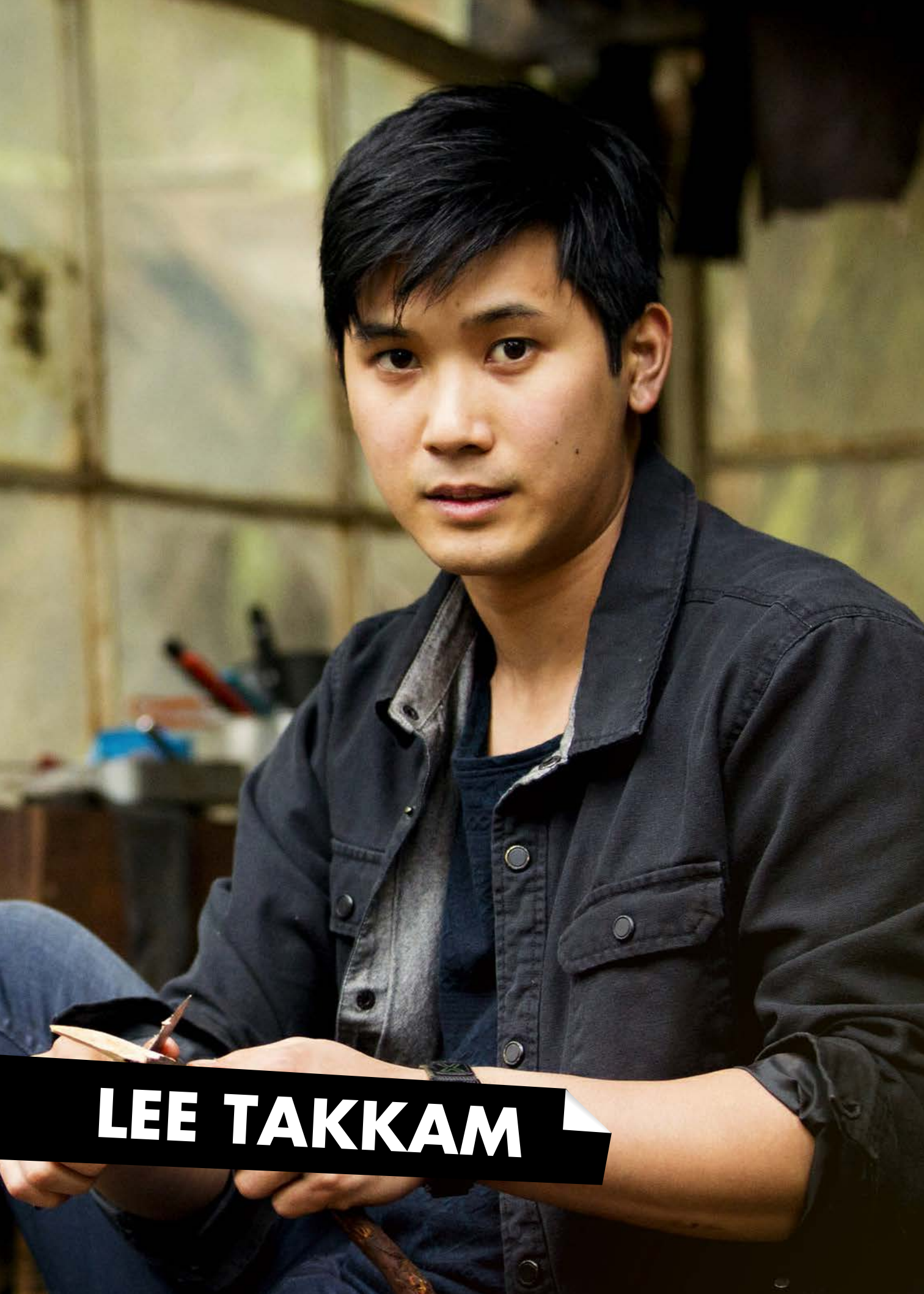
Between 2009 and 2012, Narek appeared in the critically acclaimed ABC TV children's series, **MY PLACE** (producer Penny Chapman). He played the lead role of Ari Lieberman in **DANCE ACADEMY** (Series 1 and 2) for ABC TV and appeared in two episodes of **EAST WEST 101**, the landmark SBS television series.

His stage credits include Sydney Theatre Company productions of **THE WAR OF THE ROSES** (Director Benedict Andrews), **WOMEN OF TROY** (Director Barry Kosky), **THE SERPENT'S TEETH** (Director Pamela Rabe) and Griffin Theatre's Australian premiere of **THE WAY TO HEAVEN**.

Most recently he starred in the SBS TV series **THE PRINCIPAL**, and appeared in **SUGARLAND**, staged by Australian Theatre for Young People (ATYP).

A close-up portrait of a young man with dark hair and eyes, looking directly at the camera with a neutral expression. He is wearing a grey hoodie. The background is dark and out of focus.

HOMER YANNOS



LEE TAKKAM

LEE TAKKAM

Lee is complex, skilful and intelligent. He has been raised to be responsible and respectful and when not studying, is helping his parents by working part-time in their restaurant. A musical kid, Lee wants to play in a band and would like to skip university and do his own thing.

Familiarity of military occupation through his father's stories makes him a solid sounding board for the inexperienced kids.

JON PRASIDA is Lee Takkam

Known by most as JP, Jon was born and raised in Sydney after his parents emigrated from Indonesia.

Jon's love for acting and performing first came to light when he watched a movie about baby geniuses. Since then Jon has become a favourite with casting directors both locally and internationally. His light-hearted approach to his craft charms everyone he comes into contact with.

In 2014, Jon was cast in the role of Garys for the ABC original series HIDING (Garys is the outsider of the school with a 'James Dean' edge). Jon was then cast in director Sunday Emerson Gullifer's acclaimed short film MEAT in the role of Byron.



FIONA "FI" MAXWELL

Fi is kind-hearted, sensitive and privileged. She is the most sheltered of the group, as she has been brought up in the 'big smoke' with her wealthy parents and younger brother, Chris.

Fi is the calming force behind the group, she is surprisingly strong and willing to assist the fight against the invaders in any way she can. Fi grows and develops into a solid member of the resistance group who can be relied upon.

MADELEINE CLUNIES-ROSS is Fiona "Fi" Maxwell

Sydney-based Madeleine established her passion for performing at the age of eleven, when she was cast in her school's production of *THE SOUND OF MUSIC*.

During her time at school, she was involved in all student productions including *ANNIE*, *GIRL WITH A STRING* and *THE WIZARD OF OZ*, in which she played Dorothy.

Madeleine completed various workshops at the Australian Theatre of Young People, and was cast in their 2013 critically acclaimed production *SPUR OF THE MOMENT*. In her final year of high school, Madeleine was awarded her ATCL Acting Diploma from Trinity College.

TOMORROW WHEN THE WAR BEGAN marks Madeleine's first professional acting role.



FI MAXWELL



CORRIE MACKENZIE

CORRIE MACKENZIE

Corrie is clever, reserved and adventurous. She is Ellie's best friend having spent their childhood together. She has a relationship with Kevin but is concerned it is holding her back from experiencing all the world has to offer. Pre-invasion she is thinking of busting up with Kevin as she is not ready to settle down with him and his carefully laid out plan for the future. She wants to experience more but for her these plans are cut brutally short.

Corrie grew up on a farm in Wirrawee with her mother and nurse Kath.

MADELEINE MADDEN is Corrie Mackenzie

With several key credits already to her name, Madeleine is fast becoming a familiar face to Australian television audiences. In 2009 she took the lead role of Laura in the award-winning *MY PLACE*, which related the story of one Sydney house as told by generations of children who dwelled there throughout its 220-year history.

Additional small-screen credits include notable productions such as *JACK IRISH: DEAD POINT*, series 2 of *REDFERN NOW*, *THE MOODYS*, *THE CODE* and the teen drama, *READY FOR THIS*. Madeleine has also appeared in several short films and had a key supporting role in the 2013 feature drama, *AROUND THE BLOCK*, written and directed by Sarah Spillane.



KEVIN HOLMES

Kevin is cocky and arrogant. He is the eldest of the group and he has his life planned. He is the one who feels the most connected to the land that was taken by the invaders. His vengeful nature causes rifts between him and the group however, his loyalty to Corrie is his redemption.

ANDREW CREER is Kevin Holmes

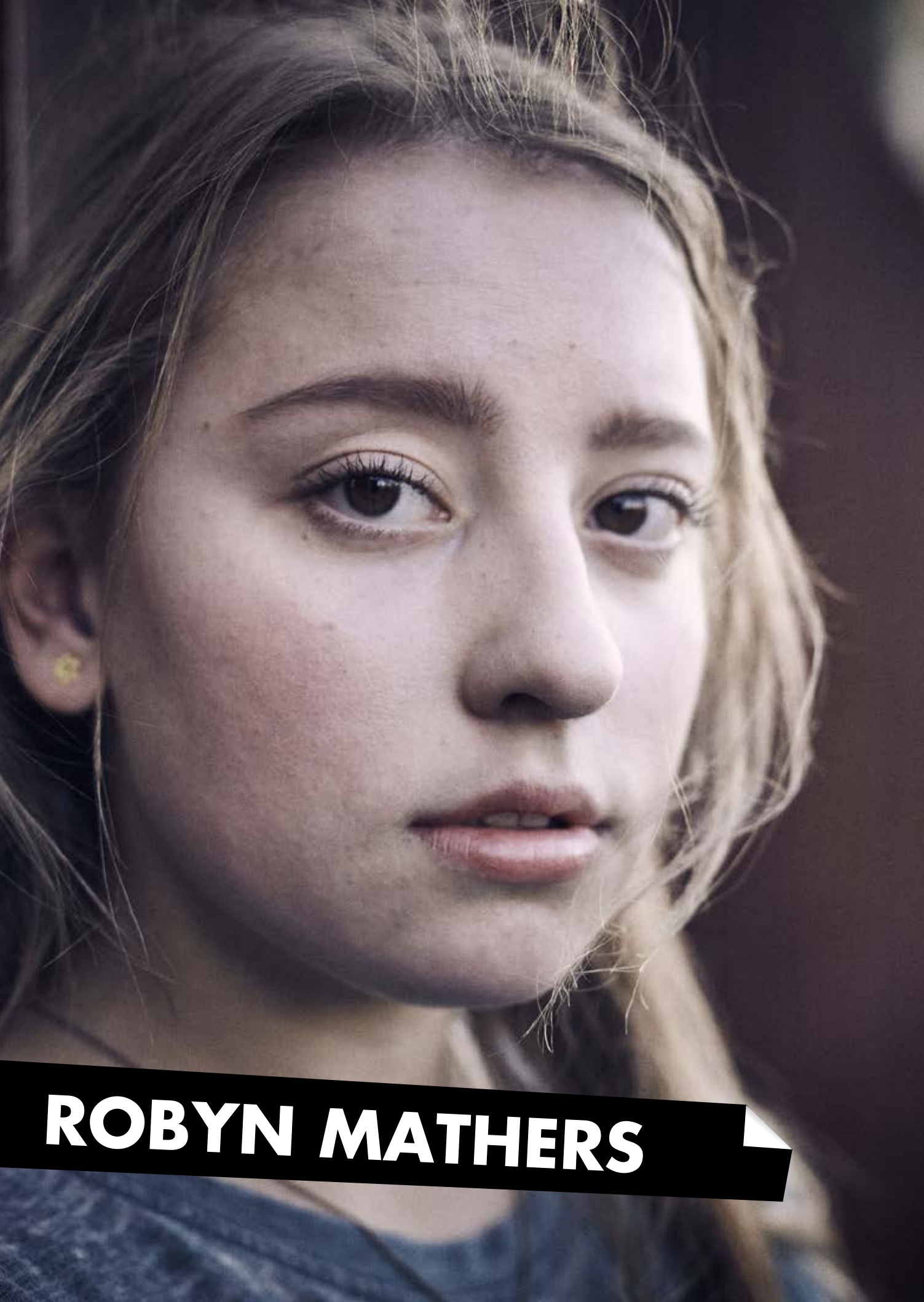
Andrew attended the prestigious Western Australian Academy of Performing Arts (WAAPA) after a gap year. In his year off he worked at a summer camp in the USA and attended workshops in Los Angeles.

At WAAPA Andrew has achieved such roles as Macduff (MACBETH), Joe Keller (ALL MY SONS), George Wickham (PRIDE AND PREJUDICE), Bridegroom (BLOOD WEDDING), Jim Casey (GRAPES OF WRATH) and William Carlile (PUNK ROCK). Andrew was the recipient of the AVA (Australian Voice Association) Student Award in 2015.

He will next appear as Wilco in the ABC mini-series BARRACUDA.



KEVIN HOLMES



ROBYN MATHERS

ROBYN MATHERS

Robyn is passionate, logical and deeply moral. She is level-headed and committed to her Christian faith. She is attracted to Lee but when it is obvious that Ellie and Lee are becoming a couple, although she is initially hurt, she ultimately accepts the situation.

FANTINE BANULSKI is Robyn Mathers

Fantine has performed in productions staged by Red Stitch Actors Theatre and Theatre Works and appeared in over twenty short films, along with the 2015 feature, THE LEGEND OF BEN HALL.

Fantine's television credits to date include RUSH, UNDERBELLY FILES: INFILTRATION, LOWDOWN, YOU'RE SKITTING ME and MISS FISHER'S MURDER MYSTERIES.



CHRIS MAXWELL

Chris is an angry, indulged young man, who takes his parents and privileged lifestyle for granted. In particular, he harbours resentment towards his frequently absent father with whom he shares a strained relationship and often appears indifferent towards his mother and sister. Intelligent but a loner, Chris frequently retreats into his own world and has no particular ambition in life, other than to be left alone to enjoy himself.

The invasion and his subsequent imprisonment come as a brutal shock to this irresponsible youth. Yet his time as a prisoner-of-war, harsh as it is, repairs his damaged parental relationship and serves to make him a better and stronger person.

KEITH PURCELL is Chris Maxwell

Keith has been acting for several years with television credits including MAD AS HELL, THE DOCTOR BLAKE MYSTERIES, UNDERBELLY SQUIZZY and NEIGHBOURS, in which he had an ongoing role.

He has also taken the lead roles in three short films – TAKING FLIGHT, THE FIGHT and DOGS SWAMP - and has studied drama both locally and the USA. And was subsequently offered a scholarship, which he'll be undertaking in 2017.



CHRIS MAXWELL



RACHEL MAXWELL

RACHEL MAXWELL

Fi and Chris' mum. Daniel's wife. Intelligent, patient, quietly determined. A former English teacher, swiftly wooed by Daniel and married quickly, her career ended once she became a mum. Though a great mother, motherhood and parenting didn't still her restless mind.

Rachel realised she was suffering a deep existential loneliness. She did charity work, took creative writing classes, but nothing filled the void. Now her kids are older, Rachel's worried she will soon become superfluous to them. She also suspects Daniel is having an affair and, dancing around the issue, they've had many fights, often in front of the kids.

She knows she should confront Daniel head on with her suspicions of his infidelity, but is worried about the outcome because she's desperate to keep her family together.

When the war comes, Rachel discovers a courage she never knew she had. She plays with fire in the form of the Army's Commander and comes close to having her life destroyed.

SIBYLLA BUDD is Rachel Maxwell

Since graduating from the prestigious Victoria College of the Arts, Sibylla Budd has enjoyed a successful career in film, television and theatre. Sibylla is best known for her role in the multi award winning drama series *THE SECRET LIFE OF US*, playing Gabrielle and capturing the hearts and minds of the Australian viewing public over three successful seasons.

Sibylla's other performances for television include *WINNERS AND LOSERS*, *MISS FISHER'S MURDER MYSTERIES* (Series 2), *RAKE* (Series 3), *THE DOCTOR BLAKE MYSTERIES* (Series 2), *REDFERN NOW* (Series 2), *IT'S A DATE*, *CANAL ROAD*, *SEA PATROL*, *ALL SAINTS*, *KATH AND KIM*, *THE FARM* (Mini-series) and *SOMETHING IN THE AIR*.

Sibylla has also enjoyed a flourishing film career and has appeared in the features *SEPTEMBER*, *THE BOOK OF REVELATION*, *THE BANK* and *THE BET*, with her performance in the latter garnering an AFI nomination for Best Supporting Actress in Film.

Sibylla has performed with many major theatre companies and her performances include *THE LONESOME WEST*, *YIBIYUNG*, *RAY'S TEMPEST* with Company B Belvoir, *BETRAYAL* with Queensland Theatre Company, *THE MEMORY OF WATER* with Melbourne Theatre Company and with Griffin Theatre Company, *THE EMPEROR OF SYDNEY*.



KATH MACKENZIE

Corrie's mum. Kath is a single mum, passionate, wilful and caring. A Critical Care Nurse at the Wirrawee local hospital, Kath grew up in Wirrawee and swore she would never stay. But after years of travelling and working as a nurse in the UK and Ireland, she found she missed the sun and so booked a ticket home. It was the night before she was meant to go, at a farewell party; she met Geoff, who is Corrie's father.

Kath and Geoff tried the long distance thing but it didn't work for them so eventually Geoff came to live in Australia. They were happy for a long time; at least she thought he was happy... but he wasn't, so Kath suggested they have a break and he head home. Kath was heartbroken when he didn't come back but kept herself together for Corrie, and moved on.

Kath notices the elderly and the mothers with small children who are lacking in basic supplies like nappies and medications and are more distressed than she is. Kath's natural instinct to protect sees her become an advocate for those who are less able than she is.

Kath is strong-willed and resourceful, but the war will show her a face of brutality she could never have imagined. Will it break her or harden her?

DEBORAH MAILMAN is Kath Mackenzie

With multiple award winning credits to her name, Deborah Mailman is one of Australia's most highly respected actors.

Receiving national acclaim in 1998 for her portrayal of Nona in the film *RADIANCE*, with Deborah receiving both the AFI and Film Critics' Circle Award for Most Outstanding Actress, her other film credits include *MENTAL, BRAN NUE DAE, DEAR CLAUDIA, THE MONKEY'S MASK, RABBIT PROOF FENCE, THE BOOK OF REVELATION, LUCKY MILES* and the internationally celebrated and award winning feature *THE SAPPHIRES*. Most recently Deborah appeared in the feature films *PAPER PLANES* and *ODDBALL*.

In television, Deborah has created some of Australia's most enduring characters including her TV Week Silver Logie Award winning portrayals of Bonita Mabo in *MABO*, Kelly in *THE SECRET LIFE OF US*, and Cherie in *OFFSPRING*, as well as roles in *RUSH, THE ALICE, TWO TWISTED, JACK IRISH, REDFERN NOW* (Series 1, 2 and Tele-movie) and *BLACK COMEDY*. Deborah was also a regular television presenter, hosting *PLAYSCHOOL* and *MESSAGE STICKS* for the ABC and Lonely Planet's *GOING BUSH* for SBS. Deborah will soon be seen in the highly anticipated series *CLEVERMAN* and *WOLF CREEK* the television series.

One of Australia's most celebrated theatre actors, Deborah's stage performances include Matilda Award winning performances in *RADIANCE* and *THE SEVEN STAGES OF GRIEVING*, the Helpmann Award Best Supporting Actress role in the STC production of *THE LOST ECHO*, and the Helpmann Award nominated role for Best Actress in the theatre production of *THE SAPPHIRES*.

In 2015, Deb co-hosted the Australian Academy of Cinema and Television Awards (AACTA) ceremony alongside Cate Blanchett.



KATH MACKENZIE



LIZ LINTON

LIZ LINTON

Ellie's mum, Jack's wife. Capable, witty, she fell in love with Jack and became a farmer. She has a natural practicality and lack of sentimentality.

Liz's no-nonsense approach is thrown off-balance by the invasion. The rules have changed and coming from a life of day-to-day routine, she struggles to understand the chaos. What she does continue to do is be supportive to all those around her.

Though she's worried sick about Ellie being on the outside, she knows her spirited daughter has reserves that will see her through. Liz tells herself it's her job to stay focussed on surviving on the inside so that she can one day be reunited with Ellie.

The war will show Liz that even against an army of invaders, she is an unflinching survivor.

ALISON BELL is Liz Linton

Alison has worked consistently in television and theatre since graduating from the VCA in 2004.

She has appeared in many Australian television series, but is perhaps best known for her role as Roo in the AACTA award winning comedy, LAID. For this she received an IF (Out of the Box) nomination, an AACTA Award nomination for Best Performance in a Television Comedy and a Best Actress in a Comedy nomination at the 2012 Monte Carlo International TV Festival. Other television credits include DO GOODERS, HOUSE HUSBANDS, THE DOCTOR BLAKE MYSTERIES, MR & MRS MURDER, MRS BIGGS, I ROCK, OFFSPRING, CITY HOMICIDE, RUSH, LAST MAN STANDING and PACKED TO THE RAFTERS.

She has recently co-written the pilot for a series in development with the ABC and Giant Dwarf.

Alison's theatre credits include BETRAYAL, THE BOOK OF EVERYTHING, CONSTELLATIONS, TRIBES, THE UGLY ONE, BLACKBIRD, WHO'S AFRAID OF VIRGINIA WOOLF?, DOUBT and KING LEAR for the Melbourne Theatre Company; BETRAYAL and HEDDA GABLER for the State Theatre Company of South Australia; CONVERSATION PIECE, OLD MAN, AS YOU LIKE IT, WHITE RABBIT, RED RABBIT, MOVING TARGET, SLEEPING BEAUTY and THE SPOOK for Malthouse Theatre; and RABBIT as well as DOUBT for Sydney Theatre Company. She also completed a New York season of THE BOOK OF EVERYTHING in 2012.

Alison's theatre work has earned her two Helpmann Awards, (DOUBT 2006 and HEDDA GABLER 2013) and a 2007 Green Room Award for her body of work that year. Further Best Actress nominations include: Sydney Theatre Award (OLD MAN); Green Room Awards (CONSTELLATIONS, TRIBES, BLACKBIRD, DOUBT); Helpmann Awards (BLACKBIRD) and in 2013 a double nomination for Best Actress, for CONSTELLATIONS and HEDDA GABLER.

JACK LINTON

Father of Ellie, husband of Liz. Career farmer, tough, resilient, has passed on some of his stubbornness to his daughter. Youngest of five, Jack has another side; he grew up being indulged, is easily offended and can take things overly seriously when events don't go his way. Luckily, a combination of his hard work and passion has meant most things have gone his way. Quick to make assessments, Jack isn't always the best judge of character.

The war throws Jack's life upside down. But he soon decides he won't be broken. Jack can't stand how powerless he feels inside the camp and plots to resist and escape at every opportunity. It sees him being caught and punished, but it doesn't dim his fighting instinct.

The war will teach Jack he's isn't able to protect everyone but he can inspire people to find the courage to act.

RICHARD YOUNG is Jack Linton

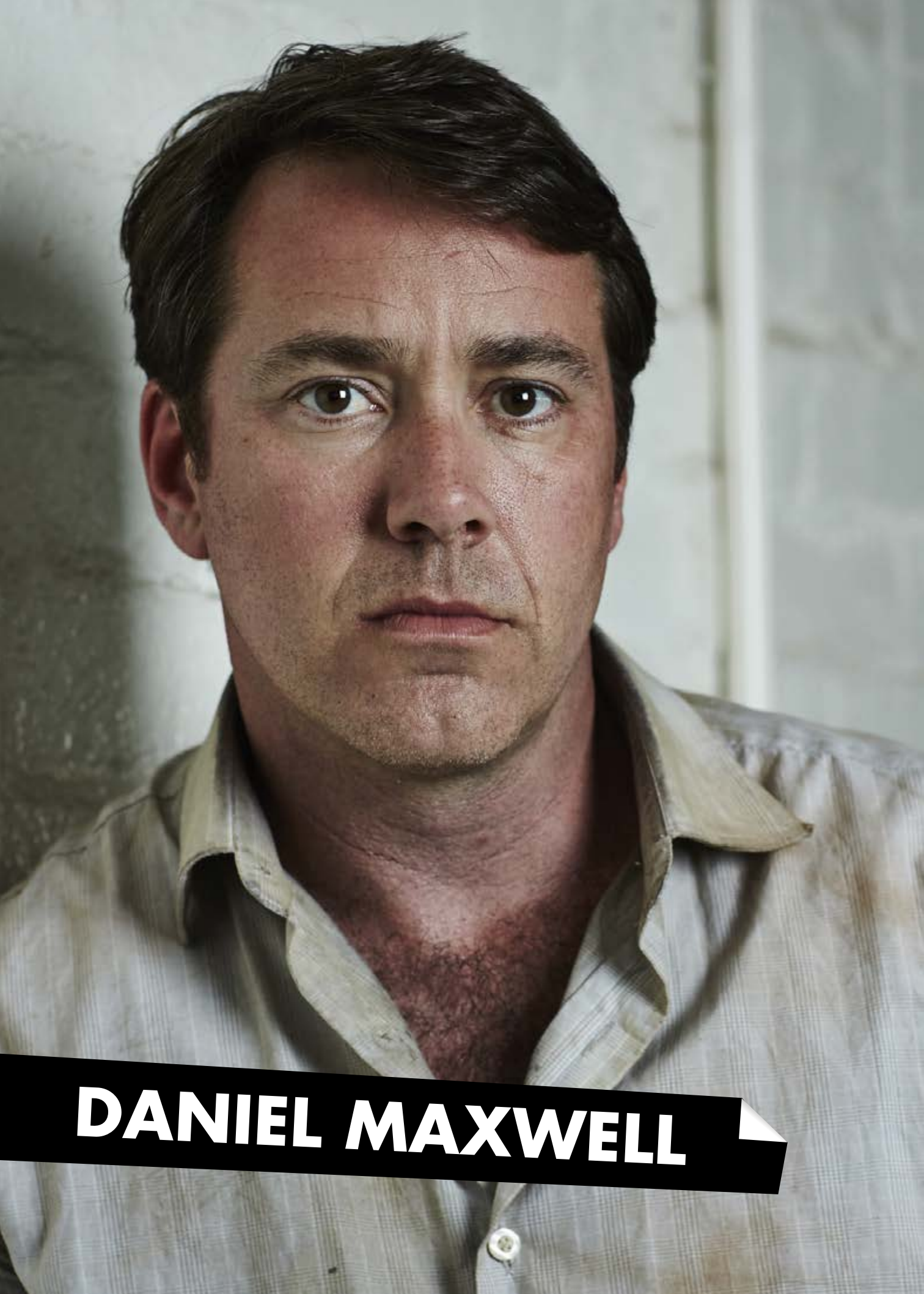
Melbourne-based Richard has been acting for many years, during which time he has amassed an impressive slate of credits, appearing in a host of seminal television productions.

His many small-screen credits, which span the last two decades, include LAW OF THE LAND, BLUE HEELERS, ROUND THE TWIST (Series 2), SNOWY, RAW FM, GENIE DOWN UNDER (Series 2), BACKBERNER, STINGERS, SALEM'S LOT, ALL SAINTS, WILFRED, CITY HOMICIDE, RUSH (Series 3), OFFSPRING (Series 2) and the mini-series HOWZAT!

Richard's big screen credits include the 2009 drama, RED HILL. This versatile performer also took the lead role of Manning Clarke in MANNING CLARK'S HISTORY OF AUSTRALIA: THE MUSICAL during the show's tour throughout the USA and Europe.



JACK LINTON



DANIEL MAXWELL

DANIEL MAXWELL

Charismatic, adaptable, strategic. Partner in a large corporate law firm. Daniel Maxwell is used to being in charge and having people hang off his every word. Daniel's career has brought financial rewards for himself and his family, but little joy. Cemented to his career, he's been almost a ghost to his wife and has missed much of his kids' growing up.

Daniel doesn't blame himself, but he knows his absence is more than a reason for his kids' issues. The move to the country was to start a new life – he would commute and 'scale down'. Five months into the move, Daniel has shown no signs of truly committing to the agreement and as a result his marriage is well and truly on the brink.

Although used to giving orders in his professional life, the war will remind Daniel the loudest voice isn't always the smartest and he will be forced to listen without ever being offered a right of reply.

It will also remind him how much he loves his wife. But will that realisation come too late?

SPENCER McLAREN is Daniel Maxwell

Spencer is an acting graduate of NIDA and has worked extensively in film, TV and theatre both here and in the UK. His most recent work includes the upcoming feature films *THE SUBJECTS* and *SURVIVING GEORGIA* with Pia Miranda.

His many television credits include *CLIFFY*, *THE SECRET LIFE OF US*, *CITY HOMICIDE*, *ALL SAINTS*, *MACLEOD'S DAUGHTERS*, *GREEN WING II (UK)*, *FAMILY AFFAIRS*, *HOME & AWAY*, *SO NOW YOU'RE FAMOUS* and *THE LOST WORLD*.

Spencer is also a seasoned theatrical performer and has starred in numerous productions including *STANDING ON CEREMONY*, *BEAUTY AND THE BEAST*, *FOOTLOOSE*, *SONGS FOR A NEW WORLD*, *TAKE FLIGHT*, *CLOSER THAN EVER*, *CATS*, *WEST SIDE STORY*, *KISMET*, *CALL ME MADAM*, *SUNDAY IN THE PARK WITH GEORGE*, *BYE BYE BIRDIE* and the BBC's UK presentation of *CAROUSEL*. He was also involved in workshopping productions of *HOLDING THE MAN* and *PRISCILLA*.

Most recently, Spencer produced the new stage version of the hit comedy *MOTHER & SON* which toured nationally.



GEORGE YANNOS

Homer's father. Crafty, unsentimental, realist. George inherited his farm but he's always wondered if he is a farmer at heart. Instead, he prefers the bustle of the city. So when times became tough, George became receptive to the idea of selling to the 'mega-farm' buying up land in the area; even if that meant alienating old friends and neighbours like Jack Linton.

George is no hero, no tough guy, but unlike many of the other adults, he manages to survive, even thrive in the strange atmosphere of the camp. His craftiness allows him to cultivate a relationship with a soldier that makes Jack think he has crossed the line and become a traitor. What Jack doesn't see is the way George uses this friendship with the soldier to save the kids when they clash with the army on the outside.

Homer and George have a complex relationship. Homer doesn't understand why his father won't 'lighten up', George thinks Homer is reckless – neither recognise they're still in a knot of grief after the death of Maria, George's wife and Homer's mother.

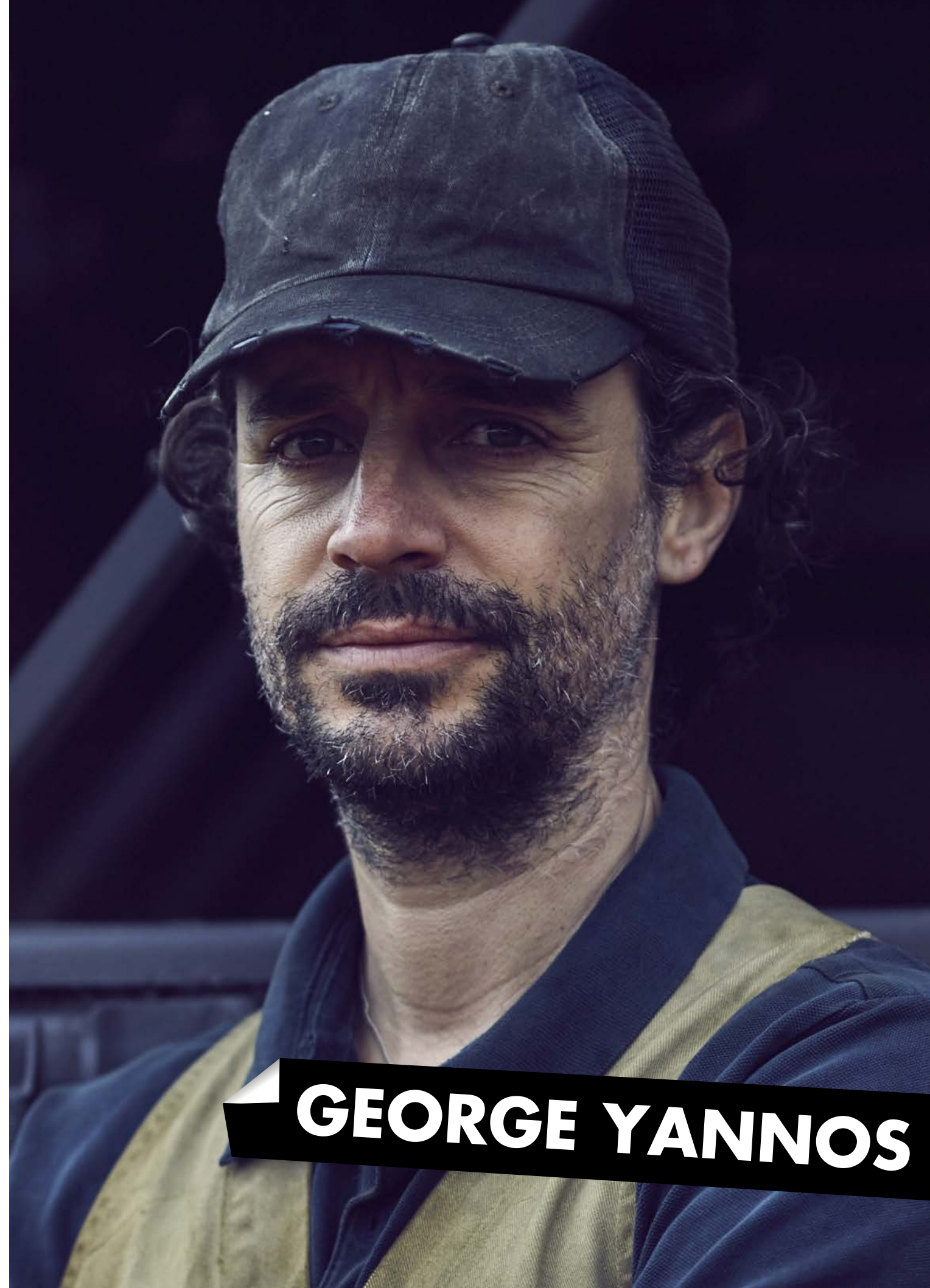
The invasion will reveal George's talent for survival at any cost. His actions will leave the audience wondering whose side he's really on and will pose the question; does self-preservation justify any means?

DAMIEN FOTIOU is George Yannos

A familiar face to Australian television audiences through his many varied roles in shows such as KICK and THUNDERSTONE. Damien graduated from Victoria College of the Arts in the mid-nineties and is also a director of Melbourne's renowned Brave Studios, a well-established film and television school for fledgling actors.

His additional television credits range from RAW FM, GOOD GUYS BAD GUYS, HALIFAX F.P., SOMETHING IN THE AIR, INTERACTIVE FLESH, BACKBERNER, THE SECRET LIFE OF US, AFTER THE DELUGE, STINGERS and BLUE HEELERS, to THE SADDLE CLUB, SCOOTER: SECRET AGENT, the original series of UNDERBELLY, RUSH and the long-running NEIGHBOURS, in which he played the recurring role of Dr Petridis during 2015.

Damien has also appeared in several big-screen features including HEAD ON, BEWARE OF GREEKS BEARING GUNS, KANGAROO JACK and THE BOOK OF REVELATION.



GEORGE YANNOS



UMAR TAKKAM

UMAR TAKKAM

Umar is Lee's lovable yet somewhat daggy dad and with his wife Therese, the family own the local Thai/Chinese restaurant. Although he can appear pushy and driven with Lee, Umar is a softie at heart. He's only pushy because he knows Lee is smart and he wants to get the best out of him. Umar is generous to a fault and a great host. He adores Therese, the love of his life. Everyone loves coming to his restaurant; it's the social hub for the parents of Wirrawee High.

Umar is devastated by his wife's death. She was his sun, his moon, his anchor in the community, his partner in work and home. He wants to murder, he wants to shed blood, but instead he swallows his pain and obeys the army order to cook for those who took his wife's life. Umar, however, is biding his time, looking for the perfect opportunity to exact his revenge.

The war will show Umar that staying alive is the best gift he can give his son; that resistance to tyranny comes in many forms.

ALFRED NICDAO is Umar Takkam

This seasoned professional has been acting from an early age and made his screen debut in 1979 as a Sumatran fisherman in the landmark Australian television drama, *THE SULLIVANS*.

Throughout the decades that have followed, Alfred has rarely been absent from Australian television screens and has amassed an incredible body of work that boasts guest appearances in numerous high-profile television productions.

Notable television credits over the last twenty years include *MERCURY*, *STATE CORONER*, *STINGERS*, *MDA*, *THE GREAT RAID*, *BOOTLEG*, *SCOOTER: SECRET AGENT*, *BLUE HEELERS*, *THE LINE*, *KICK*, *FORENSIC INVESTIGATORS*, *THE ELEPHANT PRINCESS*, *CITY HOMICIDE*, *UNDERBELLY: TELL THEM LUCIFER WAS HERE*, *SEA PATROL* and *BETTER MAN*.

Most recently he appeared in Season 5 of *OFFSPRING* and starred as Judge Sirait in the mini-series, *SCHAPPELLE*.



THE COLONEL

Educated and multi-lingual, the Colonel is a career officer and highly intelligent. Although not sadistic by nature, he is a dedicated soldier and takes his post as a representative of the invading army as a life or death mission, so will not hesitate to use violence or torture against those who would seek to cause unrest or rebel against the invaders.

A family man, who in his private moments enjoys the finer things in life, such as classical music, good wine, food and comfortable surroundings, his warmer side will ultimately always be subservient to the ruthlessness required by his position.

JAMES STEWART is The Colonel

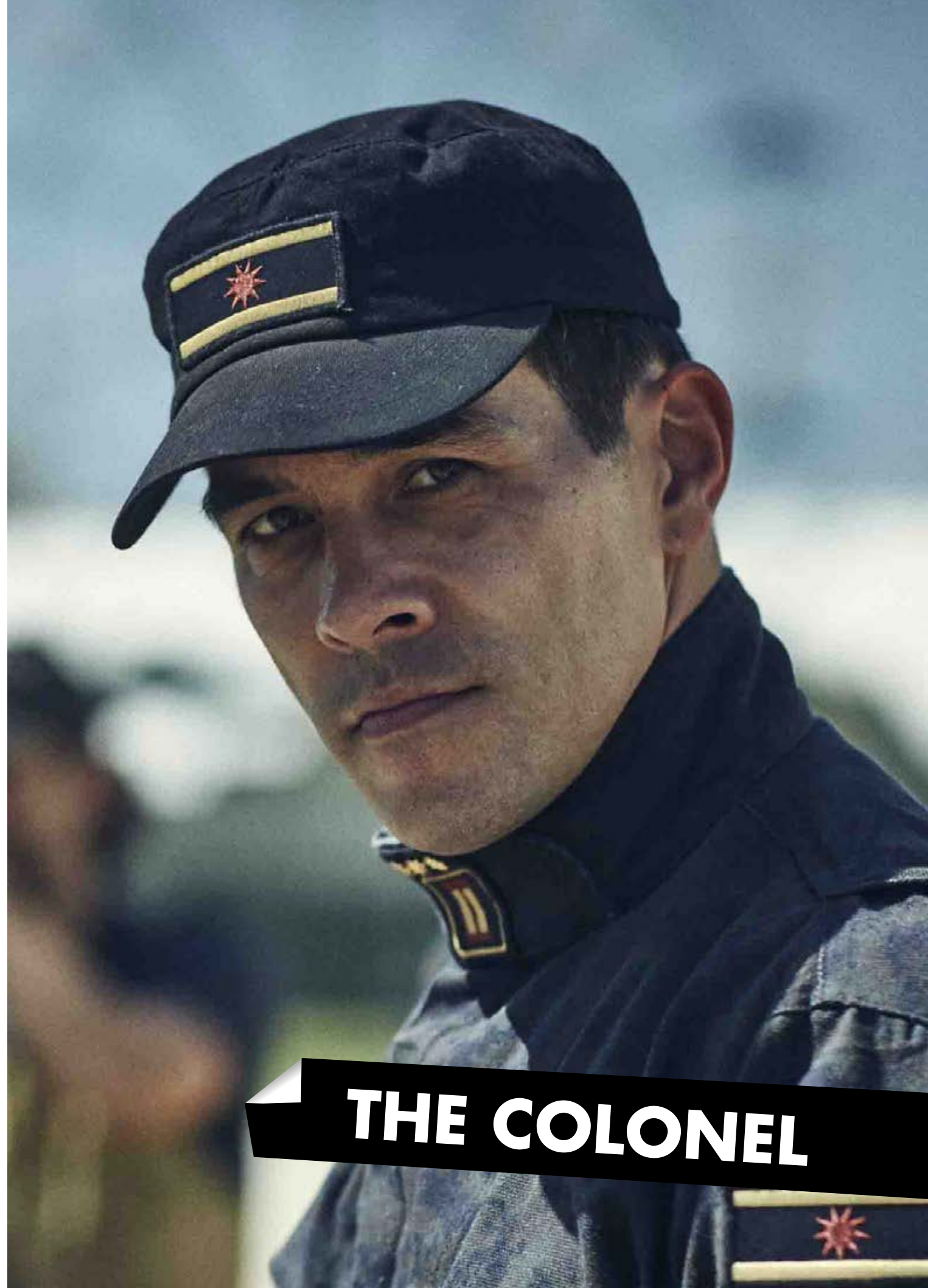
James Stewart most recently starred in ABC's series HIDING and the Nine Network's mini-series GALLIPOLI.

James is well known for his role as Jake Barton in the hit series, PACKED TO THE RAFTERS and made his television debut in BREAKERS before appearing in the US series BEASTMASTER. His other television credits include SEA PATROL, MONARCH COVE, H2O: JUST ADD WATER, MORTIFIED and THE LOST WORLD.

His feature film credits include Di Drew's HILDEGARDE with Richard E. Grant, Nick Cohen's VOODOO LAGOON, THE CONDEMNED and Sue Brooks' SUBDIVISION.

James' numerous theatre credits range from COSI, THE NARCISSIST and SVETLANA IN SLINGBACKS for La Boite, THE NARCISSIST for Sydney Theatre Company, CAUCASIAN CHALK CIRCLE and LOVE'S LABOUR LOST for the Harvest Rain Theatre Company to THE CRUCIBLE, RICHARD II and THE GLASS MENAGERIE for Queensland Theatre Company.

His performance in THE GLASS MENAGERIE earned him a Matilda Award for Best Supporting Actor and a Helpmann Award nomination for Best Supporting Actor.



THE COLONEL

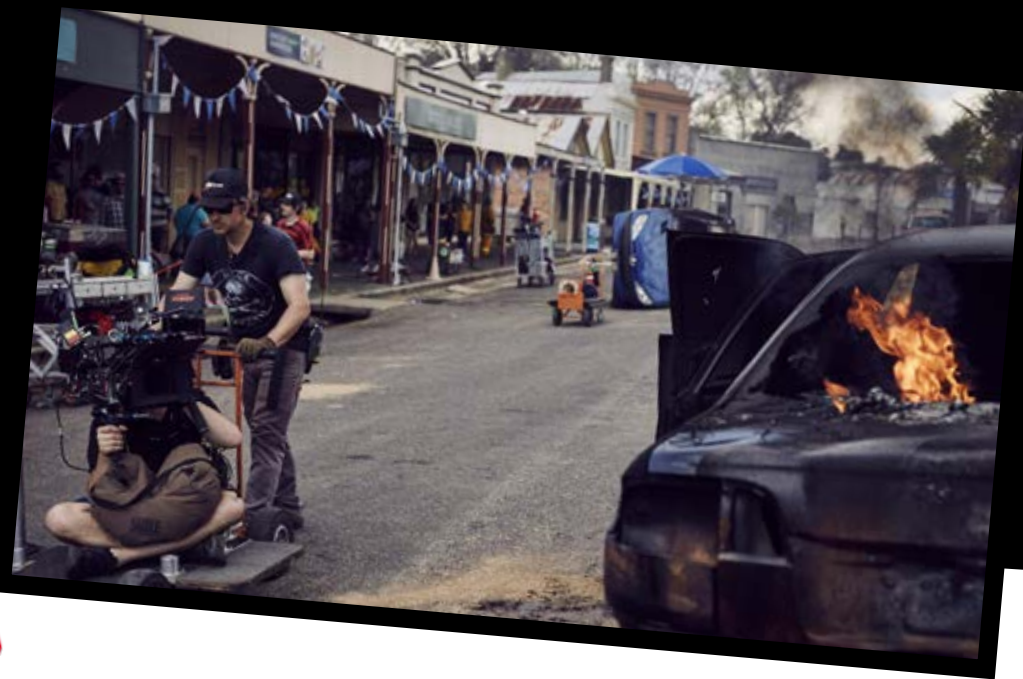
KEY CREW BIOS

MATTHEW STREET Executive Producer

In his role of Managing Director of Omnilab Media and Ambience Entertainment, Matthew oversees and spearheads Ambience's drive into content development, production and sales and distribution.

His credits include: KILLER ELITE (starring Academy Award® winner Robert De Niro, Golden Globe® winner Clive Owen and Jason Statham); TOMORROW WHEN THE WAR BEGAN, directed by Stuart Beattie; Sean Byrne's horror film THE LOVED ONES starring Xavier Samuel (from the TWILIGHT SERIES: ECLIPSE); and Australian horror film DYING BREED (starring Nathan Phillips and Leigh Whannell).

Matthew has executive produced and co-financed international feature films: DYLAN DOG: DEAD OF NIGHT (directed by Kevin Munroe starring Brandon Routh and Sam Huntington); Academy Award® nominated THE MESSENGER (starring Ben Foster and Woody Harrelson); W (directed by Oliver Stone starring Josh Brolin and Elizabeth Banks); and THE BANK JOB (directed by Roger Donaldson starring Jason Statham).



KIM VECERA Executive Producer

With an extensive career in film and television, Kim has been a driving force behind some of Australia's most successful and critically acclaimed drama productions.

She began her career at the Australian Film Commission, before taking on the role of Business Affairs Manager at Roadshow, Coote and Carroll for a ten-year tenure. Whilst there, the company produced over 300 hours of programming including BRIDES OF CHRIST and multiple seasons of the classic medical drama, GP for the ABC.

Over the following years, Kim was appointed as the first CEO of 24-hour music channel MTV Australia, and was then headhunted to take on the role of Head of Production at Fox Studios Australia in 1999.

She joined Foxtel in 2002, and was responsible for commissioning/supervising key local productions including the era defining LOVE MY WAY (Series 1 and 2), the 4-part series LOVE BYTES, the 8-part series DANGEROUS, as well as two seasons of the romantic drama SPIRITED.

In 2005 Kim joined Showtime Australia as Executive Producer for Showcase Channel, adding LOVE MY WAY (Series 3), SATISFACTION (Series 1, 2 and 3) and TANGLE (Series 1, 2 and 3) to her credits. In 2011, she Executive Produced the critically acclaimed 6-part mini-series adaptation of Tim Winton's CLOUDSTREET. The program premiered to record-breaking subscription TV audience ratings in 2012.

Most recently, Kim has been consulting on key drama projects for Ambience Entertainment.

MICHAEL BOUGHEN Producer

Michael has been writing and producing for thirty years including the past ten years producing all of Ambience's films and TV programs. Apart from Australia he has worked extensively in the UK, New Zealand and Canada with many broadcasters including the BBC, ITV, TVNZ and YTV.

Michael wrote and produced the horror feature DYING BREED (2008) before producing Sean Byrne's critically acclaimed feature THE LOVED ONES (2009). He followed this with Australia's most successful film of 2010, both critically and at the box office, TOMORROW WHEN THE WAR BEGAN and in 2011 KILLER ELITE starring Jason Statham, Clive Owen and Robert de Niro along with Australians Ben Mendelsohn and Dominic Purcell.



TONY WINLEY Producer

Throughout the last thirty-seven years Tony has worked at every level of film production amassing crucial experience on complex international and large budget local projects.

He has liaised with a high calibre of talent, such as directors Martin Campbell (NO ESCAPE), John Frankenheimer (ISLAND OF DR MOREAU) and actor Vin Diesel (PITCH BLACK) and in the process gained valuable Hollywood studio experience.

Tony produced 2 x 22 episode seasons of the high budget, multi-award winning and popular sci-fi series FARSCAPE for the Jim Henson Company. It was a unique production involving sophisticated puppetry, innovative VFX and complex studio sets.

He was Co-Producer of the feature film CHARLOTTE'S WEB based on the classic children's novel. This was a complex CGI shoot using a combination of international and local design talent that was produced for Paramount Pictures. He was also one of the key producers of the Ambience Entertainment action thriller KILLER ELITE starring Robert de Niro and Clive Owen, which was shot in Australia, England, Jordan and Morocco and released internationally through Open Road Films.

In 1987/88, as the Australian representative of Film Finances Inc., the completion bond company, Tony oversaw 40 projects of varying budgets produced throughout the Asia/Pacific region.

Tony is also a former board member on the Film Certification Advisory Board, which provides key knowledge of the Location Offset Rebate process to the Federal Government.



BRENDAN MAHER Director

Brendan Maher is a highly accomplished director with a body of work spanning more than thirty years. His strong creative vision and commitment to story have resulted in three Australian Film Institute (AFI) Awards for Best Director. His career in the UK is equally stellar having directed for top rating series such as UPSTAIRS DOWNSTAIRS, IDENTITY, SPOOKS, SPOOKS: CODE 9, SILENT WITNESS, KIDNAPPED and the tele-movie WIDE SARGASSO SEA.

Brendan's other international credits include the Starz Network productions SPARTACUS: GODS OF THE ARENA, SPARTACUS: VENGEANCE, as well as the sci-fi cult hit FARSCAPE, LOST WORLD and FLIPPER.

His Australian credits include SISTERS OF WAR and DIRT GAME for the ABC, the latter earning him an Australian Directors' Guild Award for Best Direction in a TV Mini-Series; and THE COOKS, WHITE COLLAR BLUE and THE SECRET LIFE OF US. He also directed two AFI Award-winning mini-series, THE ROAD FROM COORAIN (Best Direction) and AFTER THE DELUGE (Best Direction). Brendan's telefeature credits include the highly acclaimed SOCIETY MURDERS for ScreenTime and HALIFAX FP: SWIMMING WITH SHARKS (AFI nominee for Best Telefeature). He also directed the feature film, NIM'S ISLAND 2, starring Bindi Irwin, which was released in 2013.

Brendan's most recent credits are the Sky1 action series, STRIKE BACK, and the BBC World War One drama series THE PASSING BELLS.



o
o
o
AMBIENCE



**Screen
Australia**

FILM VICTORIA
AUSTRALIA