



*Strong emphasis on shareholder
return improvement*

We are targeting competitive shareholder return comparable to global FMCG players. In order to drive shareholder return improvement, we have set targets for dividend payout ratio and adjusted EPS growth rate.



Shareholder Information

(As of March 31, 2013)

Common Stock

Note: A 200 for 1 stock split was completed on July 1, 2012

Authorized:	8,000,000,000
Issued:	2,000,000,000
Number of shareholders:	189,301

Administration of the Registry of Shareholders

The Mitsubishi UFJ Trust and Banking Corporation
4-5, Marunouchi 1-chome, Chiyoda-ku, Tokyo

Stock Exchange Listings

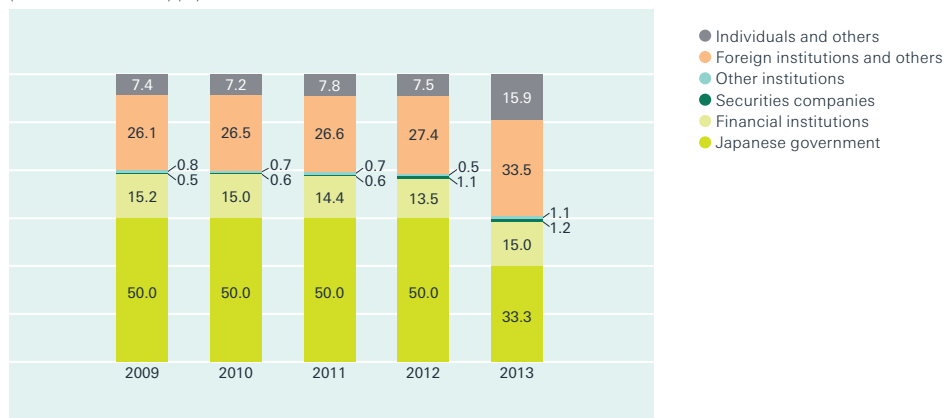
First Sections of Tokyo Stock Exchange
First Sections of Osaka Securities Exchange

Principal Shareholders

Name	Shares held
The Minister of Finance	666,933,800
State Street Bank and Trust Company (Standing Agent: Hongkong and Shanghai Banking Corporation, Tokyo branch)	52,667,589
Japan Trustee Services Bank, Ltd. (Trust Account)	52,047,200
The Master Trust Bank of Japan, Ltd. (Trust Account)	45,316,400
Trust & Custody Services Bank, Ltd. as trustee for Mizuho Bank, Ltd. Retirement Benefit Trust Account re-entrusted by Mizuho Trust and Banking Co., Ltd.	33,800,000
State Street Bank and Trust Company (Standing Agent: Mizuho Corporate Bank, Ltd., settlement division)	31,006,706
Goldman Sachs and Company Regular Account (Standing Agent: Goldman Sachs Japan Co., Ltd.)	25,167,031
JPMorgan Chase Bank 380055 (Standing Agent: Mizuho Corporate Bank, Ltd., settlement division)	19,666,814
State Street Bank and Trust Company 505223 (Standing Agent: Mizuho Corporate Bank, Ltd., settlement division)	19,539,365
HSBC BANK PLC A/C THE CHILDRENS INVESTMENT MASTER FUND (Standing Agent: Hongkong and Shanghai Banking Corporation, Tokyo branch)	19,247,400

Composition of Shareholders

(Year ended March 31) (%)



Offering JT Shares by Government

1st Offering

Method	Offering by Bids	Offering by non-Bids
Offer Price (Pricing Date)	Bid Price: From ¥1,362,000 to ¥2,110,000 Weighted Average Price: ¥1,438,000 (August 29, 1994)	¥1,438,000 (August 31, 1994)
Number of Offering shares	229,920 shares	164,356 shares
Offering Term	From August 15 to 18, 1994	From September 2 to 8, 1994

Note:

The Listing date

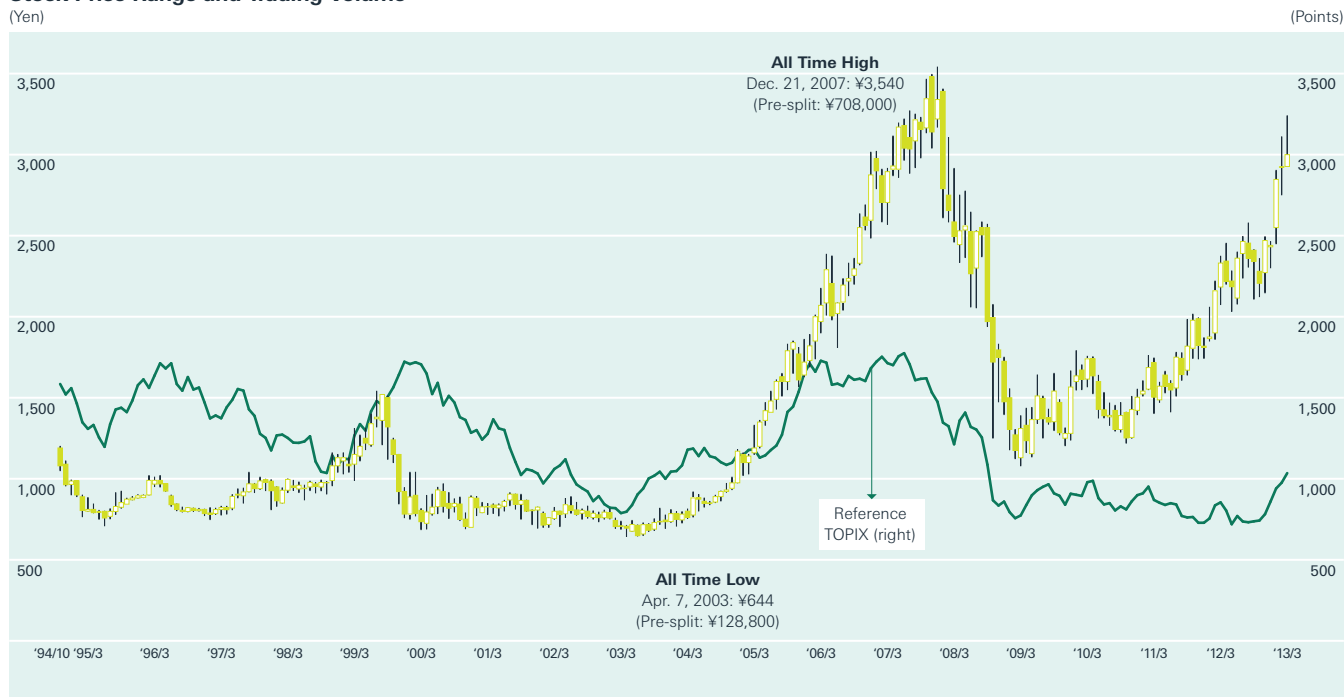
October 27, 1994: First Sections of Tokyo Stock Exchange, Osaka Securities Exchange, and Nagoya Stock Exchange.

November 7, 1994: Other Stock Exchanges.

2nd, 3rd and 4th Offering

	2nd Offering	3rd Offering	4th Offering
Method	Offering by Book-Building formula	Offering by Book-Building formula	Offering by Book-Building formula
Offer Price (Pricing Date)	Bid Price: ¥815,000 (June 17, 1996)	¥843,000 (June 7, 2004)	¥2,949 (March 11, 2013)
Number of Offering shares	Japan: 237,390 shares, International: 35,000 shares (Total: 272,390 shares)	Japan: 198,334 shares, International: 91,000 shares (Total: 289,334 shares)	Japan: 145,625,500 shares, International: 107,636,300 shares (Total: 253,261,800 shares)
Offering Term	From June 18 to 19, 1996	From June 8 to 10, 2004	From March 12 to 13, 2013

Stock Price Range and Trading Volume



Note:

Due to a 5 for 1 stock split on April 1, 2006, and a 200 for 1 stock split on July 1, 2012, stock prices reflect post-split levels.