

INSIDE

Kellie Pickler Gets "Tough" At Billboard Summit
>page 4

Rodney Atkins, LeAnn Rimes: More From Tornado Alley
>page 6

Scotty McCreery Gets A "Big" New Record
>page 6

Brad Paisley Repeats An "Old" Idea
>page 7

Luke Bryan's Doobie-ous Association
>page 7

TAYLOR SWIFT: 'SPEAK' A PEAK EXPERIENCE

In another era, it was enough for artists from **Hank Williams** to **Randy Travis** to show up in a city, unpack their gear and play.

Stage production for **Willie Nelson** was simply unfurling a Texas flag and launching into "Whiskey River."

But as country has moved to bigger venues in a high-tech world, the heft of tour productions and the volume of add-ons has increased. **Brooks & Dunn** drenched fans near the front with confetti, **Kenny Chesney** extended the length of his runways, **Garth Brooks** flew out over the audience, **Reba McEntire** incorporated dancers and costume changes, **Brad Paisley** designed his own cartoon backdrops, and **Carrie Underwood** sang from the back of a pickup that ran a loop suspended over the heads of floor patrons.

It's likely that all or most of those artists started their own concert-going experiences by attending more standard-variety country shows in their youth, then witnessing the growth in the genre's concert tech as acts from the **Oak Ridge Boys** to **Shania Twain** borrowed from pop and rock playbooks to create their visuals.

By the time **Taylor Swift**, born in 1989, came of a concert-going age, large video screens and more sophisticated lighting systems were now standard for arena-sized tours. As a result, she represents a new generation for whom massive-scale country concert productions are not just an add-on. They're a natural part of the country-arena experience.

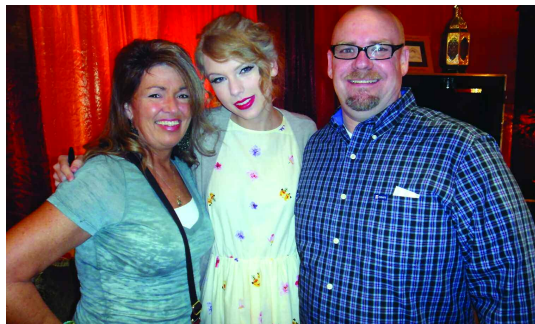
Swift launched her **Speak Now** tour in the United States this past weekend, playing Omaha, Neb., May 27-28 and Des Moines, Iowa, May 29, and the two-hour production was an overwhelming experience. Lighted trees, pyrotechnics, dancers popping up from the stage, aerialists twirling above the eight-piece band, nine costume changes, multiple set changes, a floor-sweeping

mime, confetti, a satellite stage and a small, gazebo-ish lift that took her over the crowd were just some of the details that turned the evening into a spectacle.

In essence, one of the genre's most ambitious acts has created one of the genre's most ambitious tours, drawing from country, pop, rock, Broadway and likely "Glee" to create an ever-changing production. Watch Swift and the backdrop changed. Watch the backdrop and Swift was suddenly in a different outfit. And just when there was a lull—boom!—fireworks exploded or dancers ap-

peared out of giant bells.

"The first time that I fell in love with performing is when I went to go see theater in my hometown in Pennsylvania," she said after the performance at the Wells Fargo Arena in Des Moines. "I would see it done incredibly well—going to see Broadway plays of 'Wicked'—and things like that just really inspired me from an early age to love putting on a theatrical performance where there are storylines and characters, and you're always seeing a scene change into another scene.



Taylor Swift visited with local radio executives—including KJYY Des Moines, Iowa, music director Eddie Hatfield—before her **Speak Now** tour stop at the Wells Fargo Arena. From left are Hatfield's wife, Gail Cudworth; Swift; and Hatfield.

"This is a **Hookorrific** song!" Scott Mahalick / KUPL

JAMMIES
WESLEY

DIDN'T I

Just Added

WSOC WGH WUBL KVOO WIVK
KSKS WXCX WPKX

BB 46 CA/MB 45 - 42

On this Summer's Taylor Swift **Speak Now** Tour

I love telling a story in any way possible.”

Akin in pacing to a Pink Floyd concert, *Speak Now* flowed practically uninterrupted between songs, costumes and sets. Historically, country hasn't always matched up well to big productions—sometimes the ambitions have seemed disconnected from the music or its spirit.

But in Swift's case, the end result is a fully realized concept. Swift, as a singer/songwriter, wrote all the music and conceived the show's themes and visuals, limited only by the ways in which her stage designer could fit it all in.

So while a production that incorporates snow, ballet and an Appalachian front porch could come across as hokey and disjointed in another's hands, Swift managed to pull off a certain cohesiveness. It's not something that could

be taught or orchestrated well. It has to be natural. For a young adult who grew up on big concerts, big productions and big dreams—and paid enormous attention to detail—it was indeed natural.

“We spent months going over the set list and just thinking of where things would go, which ones would segue well into other songs and how we could tell individual stories,” Swift said. “I didn't want to tell one big story. I wanted each song to have its own story.”

Swift benefited from turning her final rehearsal into a fund-raiser, amassing \$750,000 for tornado relief on May 21 at the Bridgestone Arena. That show, which came

a day prior to winning three Billboard Music Awards in Las Vegas, went off smoothly, perhaps serving as a sign for the opening weekend.

“We had a few costumes that weren't finished yet at that point, but other than that everything was the way the show is,” she said. “That rehearsal went incredibly well. I never expected for it to go on without a hitch, but it did and after the show we were all just jumping up and down, screaming.”

It opens up a new possibility: that the final rehearsal of a tour could be routinely turned into a ticketed event.

Other artists might pick up on the idea. But Swift sounded less than enthusiastic about it.

“I have no idea if I would ever want to make it something that's an annual thing,” she said. “It was so perfect for the moment. And you've got to live life that way. When moments pop up and things pop up, take these things on a case-by-case basis.”

In this case, there's an enormous amount of detail that worked to make the *Speak Now* tour a sort of next step in country concert presentation, right down to the roman numeral XIII on the bell props and the fairy dust (small bits of confetti) that dropped from her lift over the audience during “Love Story.” It blended the pacing, the music and the artist's personality in a way that transfixed many in the crowd. It's a production—and an ability—that her peers in the business will continue to study.

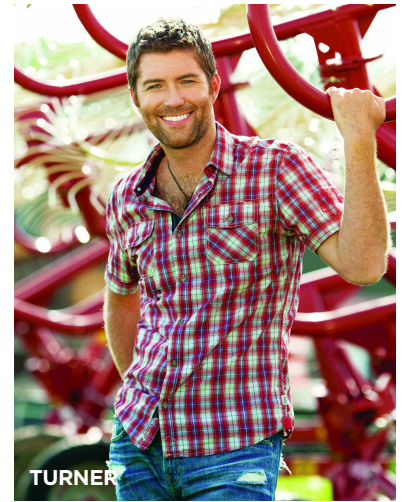


TOM ROLAND
Editor
Tom.Roland@billboard.com

THIS WEEK AT CALLOUT AMERICA

JOSH TURNER REIGNS ON CALLOUT CHART

Josh Turner returns to the No. 1 spot this week with “I Wouldn't Be a Man,” also checking in at No. 3 passion. Adults 25-44 are at No. 1 and No. 3 passion, too. Men are the strength at No. 1 and No. 2 passion with females at No. 2 and No. 3 passion.



TURNER

Taylor Swift stays strong with “Mean,” ranked at No. 4 overall and a commanding No. 2 passion. Younger adults 25-34 are at No. 2 and No. 1 passion. Adults 25-44 rank “Mean” at No. 3 and No. 2 passion. Females 18-34 place it at No. 3 and No. 1 passion while men 25-34 are also at No. 2 and No. 1 passion.

Keith Urban stays in an upward growth trend with “Without You” ranked as the No. 3 song with younger 25-34 listeners, up

from No. 11 two weeks back. Core 35-44s are at No. 4, up from No. 8 last week. Core females rank it No. 1. Females 18-34 are at No. 3 and No. 4 passion.

Luke Bryan is showing solid scores for “Country Girl (Shake It for Me),” at No. 11 and No. 10 passion. Younger 18-34s are at No. 6 passion with 18-24 listeners at No. 7 and No. 4 passion. Females 18-34 place it at No. 6 passion. Men overall are at No. 8, and males 35-44 are at No. 7.

Josh Thompson is strong with “Won't Be Lonely Long” at No. 15, up from No. 18 last week. It also nabs a No. 20 passion score. Younger 25-34s are the strength at No. 10. Core females 35-44 are at No. 11 and No. 14 passion. Adult females 25-44 also have it at No. 11, up from No. 16.

—John Hart, Bullseye Marketing Research
email: hart@bullsi.com

ZAC BROWN BAND

“KNEE DEEP”

16

The biggest Hit of the Summer....

Kid Rock

Featuring **Sheryl Crow**

“Collide”

See Kid
Host the CMT Music Awards
June 8th

CRAIG CAMPBELL

“Fish”

Boat Leaves June 6th...
Don't miss the Boat.



Younger active P1s **LOVE** this song!

MARGARET DURANTE

Maybe Tonight

Positive / Passion

Active P1s 12-24 #6 / #7

Active P1s 18-34 #10 / #9

Female P1s 12-24 #6 / #7

Female P1s 18-34 #7 / #7

Forecaster New Music Poll / Bullseye Audience Research



KELLIE PICKLER PLAYS BILLBOARD SUMMIT

With the debut single from her third album freshly released to radio programmers, **Kellie Pickler** will make a key appearance June 7 at the second Billboard Country Music Summit.

Pickler, whose "Tough" was issued May 23 through PlayMPE, will perform a closing showcase at the finale of the two-day event, making her the latest addition in a stellar cast of participating acts. **Kenny Chesney** and **Carrie Underwood** will take part in keynote Q&As, and **Jason Aldean** will join an artist-development panel that focuses on his emergence as one of the genre's top attractions. **Joe Nichols**, **Charlie Daniels**, renowned guitarist **Tommy Emmanuel**, **Gloriana** member **Tom Gossin** and independent artist **David St. Roman** will also appear on panels and at round-table discussions that range in topics from the concert business to branding to international marketing.

Songwriters **Rhett Akins** ("Honey Bee"), Dallas Davidson ("Just a Kiss"), **Doug Johnson** ("Love Like Crazy") and **Chris DuBois** ("Old Alabama") will join songwriting and publishing panels, and the conference lineup also includes representatives and agents for the likes of **George Strait**, **Toby Keith**, **Lady Antebellum**, **Zac Brown Band**, **Colt Ford** and **Dierks Bentley**, among others.

Just prior to Pickler's performance, the summit wraps its final panel, "Country Radio: Dead or Alive?" Country Weekly managing editor **Ken Tucker** will moderate the session with WSIX Nashville PD **Jon Anthony**, Sony Music Nashville senior VP of promotion **Skip Bishop**, Sirius XM Satellite Radio senior VP of music programming **Steve Blatter**, Cumulus Broadcasting senior VP Jan Jeffries and Premiere Radio Networks president **Julie Talbott**.

Co-sponsored by the Country Music Assn., the Billboard Country Music Summit takes place at the Nashville Renaissance Hotel in advance of the CMA Music Festival, which runs June 9-12. Go [here](#) for more information.

MOVERS & SHAKERS

Tom English is no longer VP/market manager for Clear Channel/Nashville, including WSIX Nashville. Reach English [here](#) . . . **Greg Cole** has resurfaced as OM

for MacDonald Broadcasting/Saginaw, Mich., including country WKCQ. Reach him [here](#) . . . Clear Channel/Washington, D.C.-Baltimore has promoted **Thea Mitchem** from OM to market manager. The cluster's properties include country stations WMZQ Washington, D.C., and WPOC Baltimore . . . Clear Channel/Austin market manager **Pam McKay** has added the same role in San Antonio to her job description. Clear Channel's country signals in Austin include KASE and KVET; its San Antonio country outlet is KAJA . . . Country Radio Broadcasters has added two directors of brand marketing and strategic partnerships. **Michelle Tigard Kammerer**



KAMMERER

takes her position after 10 years in music-industry posts, including seven years with Creative Artists Agency. **Cheri Lynn Martin** was previously based in Seattle, where she ran a promotions and marketing firm for four years, promoting such acts as **Carrie Underwood**, **Sugarland** and **Phil Vassar**. Kammerer and Martin start their jobs June 6 . . .



MARTIN

WLHK Indianapolis personality **Fritz Moser** has been named music director for the station, according to Radio-Info.com. Moser is also MD for AC sister WYXB . . . Also from Radio-Info.com: PD **George Wolf** has left WHOK Columbus, Ohio . . . KATM Modesto, Calif., PD **Randy Black** has parted with the station after an 18-year association. Inside Radio reports . . . Also from Inside Radio: KJUG Visalia-Porterville, Calif., PD **Dave Daniels** left the station May 31 to take a job at a local concert venue. KUPL Portland, Ore., assistant PD/music director **Keola Lui-Kwan** has shifted to PD of AC KBFF Portland. WGAR Cleveland morning host **Tim Leary** has departed after just eight months in the position. And WWFG Salisbury-Ocean City, Md., morning man **John Trout** is moving to a new on-air role with WBOC-TV.

'ROUND THE ROW

Music Row veteran **John Grady** will open Crush Nashville, a new division of Crush Management, which represents such acts as Train and Panic! at the Disco. The first two acts for the new wing are Sony Music Nashville artist **Kristen Kelly** and a duo, **Sarah Zimmerman** and **Justin Davis**. Crush Nashville will be housed at 1227 17th Ave. S., #2, Nashville TN 37212. Reach Grady [here](#) . . . **Kelsey Lantrip** has joined **James Stroud's** R&J label as promotion coordinator. She previously interned with Big Machine and with Bullseye Marketing's Nashville Country Club. Reach Lantrip [here](#) . . . Black River Entertainment has added two radio pros, **Brian Hatfield** and **Megan Good**, to its promotion staff, reporting to VP of promotion **Rick Baumgartner**. Hatfield leaves his assistant PD/music director post at WSKF Asheville, N.C., to handle the Northeast region for Black River, beginning June 6. Reach him [here](#). Good was promotions director for Cumulus/Nashville, where her role included work for WSM-FM. Reach her [here](#) . . . Big Machine Label Group has added **Colleen**

Gross Ticket Price(s)	Artist Venue/Date(s)	Attendance Capacity	Promoter(s)
\$1,041,492 \$89.50, \$39.50	GEORGE STRAIT, REBA Allstate Arena, Rosemont, Ill., March 5	15,277 15,550	THE MESSINA GROUP/AEG LIVE
\$1,024,576 \$89.50, \$39.50	GEORGE STRAIT, REBA Mizzou Arena, Columbia, Mo., April 8	13,056 sellout	THE MESSINA GROUP/AEG LIVE
\$759,989 \$79.50, \$25	KENNY CHESNEY Veterans Memorial Arena, Jacksonville, May 12	11,949 sellout	MISHELL PRODUCTIONS, THE MESSINA GROUP/AEG LIVE
\$662,433 \$79.50, \$25	KENNY CHESNEY Rupp Arena, Lexington, Ky., May 14	14,731 17,077	VARNELL ENTERPRISES, THE MESSINA GROUP/AEG LIVE
\$608,685 \$79.50, \$25	KENNY CHESNEY Bi-Lo Center, Greenville, S.C., May 13	11,308 sellout	VARNELL ENTERPRISES, THE MESSINA GROUP/AEG LIVE

Reported worldwide boxscore figures for Country artists. Boxscore figures should be submitted to Bob Allen by phone (615-793-0466), fax (615-793-2891) or email (bob.allen@billboard.com).

Billboard

Sign up for **FREE** weekly delivery of the **Billboard Country Update**

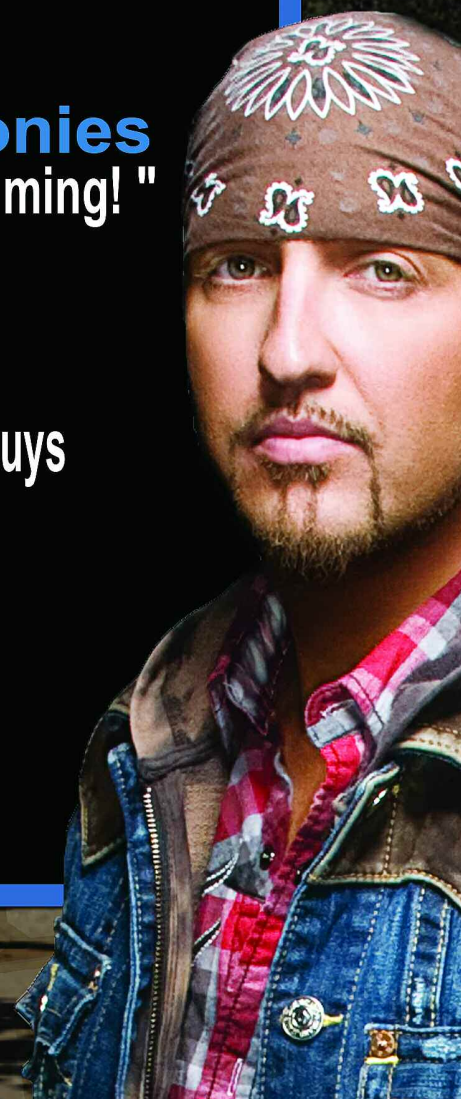
Visit www.billboard.biz/bbbiz/newsletter to subscribe today!

LOCASH COWBOYS

"Bright, positive and fun!
LoCash Cowboys add the perfect spotlight
to our Country Summer!"
~ Travis Moon - PD, KAJA

"The LoCash boys have delivered
yet another great single.
'You Got Me' has
great tempo, great harmonies
and will add fun to our summer programming!"
~ Adam Jeffries - APD, KJUG

"LoCash Cowboys are a couple of great guys
who deliver on every performance!
Their new single
'You Got Me'
is a great PPM song!"
~ Kerry Wolfe - PD, WMIL





Capstone artist Glen Templeton (left) visits with WIBW Topeka, Kan., PD Keith Montgomery while promoting current single “I Could Be the One.”

Taylor as administrative assistant. She reports to **Harry Lyons**, executive assistant to president/CEO **Scott Borchetta**. Reach Taylor [here](#) . . . The independent Ruby label has opened a Nashville office to bolster the release of a single by **Jimmy Lehoux**. The imprint is owned by New Hampshire-based CEO **Gary Crane**, who has a similar title with Ruby’s parent company, Capital Productions. **Tom McBee** has been enlisted to oversee radio promotion. Thompson Entertainment Group is in charge of marketing and public relations . . . Independent artist **Tyler Reeve** has signed a booking agreement with William Morris Endeavor and a management deal with **Mike Kraski**’s Tenacity Management. Reeve is working on his sophomore album with songwriter/producer **Jonathan Singleton** . . . **Marlee Scott** has signed on as the flagship artist of Nashville-based Bigride Records. CO5 Nashville and Marco Promotions have been retained to promote her debut single, “Beautiful Maybe” . . . Songwriter **Jason Mizelle** has signed a publishing deal with Warner/Chappell.

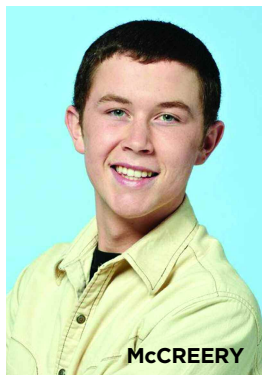
GOOD WORKS

Country music’s outreach to tornado-ravaged communities continues with a couple of new fund-raising concerts headlined by **Rodney Atkins** and **LeAnn**

ON THE CHARTS

‘IDOL’ GRADS DOMINATE RADIO CHART NEWS—MCCRERY, ALAINA POISED FOR RETAIL SPLASH

Plowing new ground on Billboard’s Hot Country Songs chart is the first order of business for newly minted “American Idol” winner **Scotty McCreery**, as the North Carolina native posts the highest Nielsen BDS-era debut (since January 1990) by a previously unknown act—a No. 32 arrival with “I Love You This Big” (19/Interscope/Mercury). The teenage bass singer outpaces the previous record, noted when second season “Nashville Star” king **Brad Cotter** blew in at No. 42 with “I Meant To” on the chart dated May 22, 2004, on his way to a No. 35 peak roughly three months later. McCreery performed his new song two nights running on ‘Idol,’ on May 24 and on the May 25 season finale. With spins detected at 76 of the 127 stations monitored for Hot Country Songs, the fattest audience penetration for “Big” is 272,000 impressions at **WMZQ** Washington, D.C., followed by **WIL** St. Louis (218,000), **WQDR** Raleigh, N.C. (191,000), **WDSY** Pittsburgh (174,000) and **KAJA** San Antonio (152,000). Temporarily renaming itself “Scotty 94.7,” the Raleigh signal covers McCreery’s hometown of Garner, N.C., and turns in the most plays (24) on the Hot Country Songs panel. Meanwhile, McCreery’s song is selling briskly and expected to debut at No. 1 on Billboard’s Country Digital Songs, with strong first-week positioning a certainty on the Billboard Hot 100. Those charts update on [Billboard.biz](#) and [Billboard.com](#) on June 2.



A bit lower on Hot Country Songs, “Idol” runner-up **Lauren Alaina** starts at No. 49 with

Rimes. Among the last week’s developments:

- Atkins has top billing on a Music City Gives Back concert on Lower Broadway in Nashville on June 7. Sponsored in part by WSIX Nashville, the show features **Thompson Square**, **Josh Thompson** and others two days before the official launch of the CMA Music Festival.
- Rimes plans a June 5 benefit concert co-hosted by husband **Eddie Cibrian** at the Ponte Vedra Concert Hall in Jacksonville, Fla. According to the Florida Times-Union, the event also includes a silent auction of memorabilia donated by **Tim McGraw**, **Reba McEntire**, **Justin Bieber**, **Kelly Clarkson**, **Kim Kardashian** and the cast of “Glee.”
- **Sugarland** released a video and audio track of “Stand Up,” from the album “The Incredible Machine,” as “Stand Up (For Tornado Relief)” through iTunes on May 31. Featuring **Little Big Town**, the clip was shot on tour in Chicago and Minneapolis in May. All proceeds are set for the American Red Cross.
- McEntire and **Blake Shelton** raised \$500,000 with their two-night charity stand May 25-26 at the Choctaw Events Center in Durant, Okla. The second night included unannounced guest appearances by Clarkson and **Susie McEntire-Eaton**.
- As Shelton and McEntire reached out in Oklahoma, **Kenny Chesney** donated proceeds from his May 25 show in Tuscaloosa, Ala., to the local community. Alabama native **Mac McAnally**, currently touring as a member of **Jimmy Buffett**’s Coral Reefer Band, dueted on two songs with Chesney.

TWEET OF THE WEEK *twitter*

Jimmy Wayne (@JimmyWayne) may have a good explanation for this tweet (and its accompanying photo), but one can’t imagine what it might be:

“This is the 1st time N my recording career I had to use a trampoline to help me sing . . . I think I’m taking it on tour <http://t.co/axqV45e>”

DRUNKEN TWEET OF THE WEEK

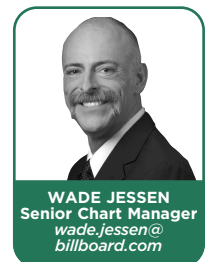
The phony version of **the Band Perry** (@drunkbandperry) puts some significance in numerology:

“10 followers from 666 . . . I’m not sure whether to be happy or scared about it ha”

To follow BCU, go [here](#).

“Like My Mother Does” (19/Interscope/Mercury), which stacks 977,000 audience impressions at 36 stations monitored for the chart. With 16 plays and 141,000 listener impressions, **KAJA** San Antonio offers the most exposure for “Mother” among Hot Country Songs panelists. Although Alaina’s track has a slower start on the radio list, she’s expected to post a noteworthy sum on Country Digital Songs and a respectable debut on the Hot 100.

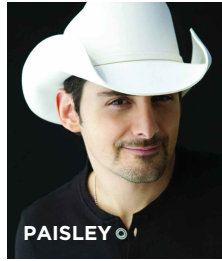
Although the label remains mum about the official-single status of **Brad Paisley**’s “Remind Me” (Arista Nashville), the duet with **Carrie Underwood** gains 1.8 million impressions (95%) and surges 36-30 in its second chart week. With 3.3 million impressions at 50 Nielsen BDS-monitored chart reporters, the track is a standout on Paisley’s new “This Is Country Music” album, which will easily top Billboard’s Top Country Albums, selling roughly 160,000 units, according to senior retail analysts at Billboard and other industry hawks. Meanwhile, Paisley’s “Old Alabama” (Arista Nashville) clings to No. 1 for a second week on Hot Country Songs and dips to No. 2 after a three-week stint at No. 1 on Billboard’s Country Indicator list. Official single or not, our national formats/secondary markets outlets christen “Remind Me” as that panel’s Most Added track, piling up 31 commitments from Country Indicator reporters. The song also nabs Most Increased Plays honors (up 524 spins) and rockets 50-27 on that list. On Hot Country Songs, **Kenny Chesney** draws Most Added applause with “Tequila and You” (BNA), which claims 24 nods and jumps 27-21 in its fourth chart week.



HOUSEKEEPING: Effective with the May 30-June 5 Nielsen BDS tracking week, **WJVC** Nassau-Suffolk (Long Island), N.Y., joins the Hot Country Songs panel. PD **Phathead** can be reached at phathead@jvcbroadcasting.com or 631-648-2500, ext. 2504. The station begins reporting new playlist adds on June 6.

MUSIC NOTES

Brad Paisley's "Old Alabama" is a rarity—not only did it return featured act Alabama to No. 1, it also incorporates a section of another song, Alabama's classic "Mountain Music." But it's not the first title to do that. Among other songs that have lifted material from previous titles are Johnny Cash's "Daddy Sang Bass" (which borrowed from the Carter Family's "Will the Circle Be Unbroken"), Ronnie Milsap's "Lost in the Fifties Tonight" (the Five Satins' "In the Still of the Nite"), Tim McGraw's "Indian Outlaw" (Paul Revere & the Raiders' "Indian Reservation"), Buck Owens & Emmylou Harris' "Play Together Again Again" (Owens' "Together Again") and Jerry Reed's "The Bird" (Willie Nelson's "On the Road Again" and George Jones' "He Stopped Loving Her Today").



Country music's restaurant business is picking up. The 200-seat Opry Backstage Grill is set to open in Nashville in mid-July with a Southern-leaning menu that includes skillet-fried chicken, okra fries and Tennessee cornbread salad. Toby Keith meanwhile had a soft opening for another of his I Love This Bar and Grill outlets May 20-22, according to the Foxborough (Mass.) Patch. The new franchise is at Patriot Place, a shopping and entertainment complex near Gillette Stadium in Foxborough.

Luke Bryan will team with the Doobie Brothers for the next edition of "CMT Crossroads" (June 24). The match is something of a genre homecoming for Doobie John McFee: He was a member of '80s country harmony act Southern Pacific. The show's set list has a liquid undercurrent as "Black Water" meets "Rain Is a Good Thing."

The 45th annual Country Music Assn. Awards are set for Nov. 9 on ABC. The first ballot goes to CMA members through email on June 27. The association has also added Bill Anderson and Steve Wariner as hosts of the opening-night LP Field concert during the CMA Music Festival. That June 9 lineup is also heavy on guests: Kelly Clarkson will join Jason Aldean, and Zac Brown Band welcomes four musical partners—Randy Travis, Alan Jackson, Amos Lee and Sonia Leigh.

POWER PLAYLISTS

WUSN Chicago		US 93.5 Country		WITL Lansing, MI		WITL Today's Best Country 100.7	
PD: Buddy Scott MD: Marci Braun CBS: 312 649-0099		Plays TW LW		PD/MD: Chris Tyler APD: Jordan Lee Citadel: 517 393-1010		Plays TW LW	
1	Keith Urban Without You	64	62	1	Keith Urban Without You	42	39
2	Rascal Flatts I Won't Let Go	64	64	2	Rascal Flatts I Won't Let Go	41	39
3	Brad Paisley Feat. A Old Alabama	64	68	3	Brad Paisley Feat. A Old Alabama	40	35
4	Sara Evans A Little Bit Stronger	60	62	4	Ronnie Dunn Bleed Red	39	39
5	Jason Aldean With Kelly Don't You	45	20	5	The Band Perry You Lie	38	36
6	Taylor Swift Mean	44	42	6	Justin Moore If Heaven Wasn't So Fa	35	29
7	Ronnie Dunn Bleed Red	41	37	7	Taylor Swift Mean	33	30
8	The Band Perry You Lie	39	32	8	Chris Young Tomorrow	32	25
9	Justin Moore If Heaven Wasn't So Fa	35	39	9	Blake Shelton Honey Bee	31	29
10	Darius Rucker This	35	56	10	Miranda Lambert Heart Like Mine	31	40
11	Martina McBride Teenage Daughters	34	31	11	Lady Antebellum Just A Kiss	27	7
12	Chris Young Tomorrow	34	33	12	Dierks Bentley Am I The Only One	26	17
13	Zac Brown Band Feat. Knee Deep	33	14	13	Toby Keith Somewhere Else	26	24
14	Luke Bryan Country Girl (Shake It F	33	30	14	Kenny Chesney Feat. You And Te	26	28
15	Blake Shelton Honey Bee	33	35	15	Luke Bryan Country Girl (Shake It F	25	26
16	Lady Antebellum Just A Kiss	32	29	16	Easton Corbin I Can't Love You Back	25	27
17	Ashton Shepherd Look It Up	31	32	17	Zac Brown Band Feat. Knee Deep	21	19
18	Trace Adkins Just Fishin'	30	31	18	Eric Church Homeboy	21	22
19	Toby Keith Somewhere Else	30	32	19	Josh Turner I Wouldn't Be A Man	20	21
20	Dierks Bentley Am I The Only One	29	29	20	Steve Holy Love Don't Run	19	17
21	Lady Antebellum I Run To You	17	13	21	Jason Aldean Dirt Road Anthem	18	19
22	Chris Young Voices	17	17	22	Martina McBride Teenage Daughters	16	15
23	Sugarland Stuck Like Glue	16	16	23	Frankie Ballard A Buncha Girls	14	10
24	Darius Rucker Alright	15	14	24	Darius Rucker This	13	11
25	Lady Antebellum Need You Now	15	19	25	Sara Evans A Little Bit Stronger	13	38
26	Jason Aldean Dirt Road Anthem	14	10	26	Jake Owen Barefoot Blue Jean Night	12	6
27	Josh Turner Why Don't We Just Dance	12	7	27	Trace Adkins Just Fishin'	12	13
28	Brad Paisley Then	12	11	28	Josh Thompson Won't Be Lonely Long	11	11
29	Taylor Swift Back To December	11	18	29	Trace Adkins Ladies Love Country Bo	10	4
30	Kenny Chesney Feat. You And Te	10	5	30	Thompson Square Are You Gonna Kiss	10	10

Billboard COUNTRY DIGITAL SONGS				nielsen SoundScan			
TW	LW	WKS ON CHART	TITLE ARTIST (IMPRINT/LABEL)	TW	LW	WKS ON CHART	TITLE ARTIST (IMPRINT/LABEL)
1	1	3	JUST A KISS LADY ANTEBELLUM (Capitol Nashville)	26	RE-ENTRY	1	I HOPE YOU DANCE LEE ANN WOMACK (MCA Nashville)
2	3	10	DIRT ROAD ANTHEM JASON ALDEAN (Broken Bow)	27	NEW	1	YOUR MAN JOSH TURNER (MCA Nashville)
3	2	7	HONEY BEE BLAKE SHELTON (Warner Bros./WMN)	28	27	30	SOMEWHERE WITH YOU KENNY CHESNEY (BNA)
4	15	49	IF I DIE YOUNG THE BAND PERRY (Republic Nashville)	29	NEW	1	AMAZED LONESTAR (BNA)
5	10	31	ARE YOU GONNA KISS ME OR NOT THOMPSON SQUARE (Stoney Creek)	30	26	31	WHAT DO YOU WANT JERROD NIEMANN (Sea Gayle/Arista Nashville)
6	4	5	COUNTRY GIRL (SHAKE IT FOR ME) LUKE BRYAN (Capitol Nashville)	31	28	18	I CAN'T LOVE YOU BACK EASTON CORBIN (Mercury)
7	5	15	MEAN TAYLOR SWIFT (Big Machine)	32	34	9	LOOK IT UP ASHTON SHEPHERD (MCA Nashville)
8	16	5	KNEE DEEP ZAC BROWN BAND FEAT. JIMMY BUFFETT (Southern Ground/Atlantic/Bigger Picture)	33	29	3	GOOD TO BE ME UNCLE KRACKER FEAT. KID ROCK (Top Dog/Atlantic/Bigger Picture)
9	7	20	I WON'T LET GO RASCAL FLATTS (Big Machine)	34	35	40	MY KINDA PARTY JASON ALDEAN (Broken Bow)
10	6	14	TOMORROW CHRIS YOUNG (RCA)	35	30	23	THIS DARIUS RUCKER (Capitol Nashville)
11	11	6	OLD ALABAMA BRAD PAISLEY FEAT. ALABAMA (Arista Nashville)	36	38	4	TAKE A BACK ROAD RODNEY ATKINS (Curb)
12	8	36	A LITTLE BIT STRONGER SARA EVANS (RCA)	37	32	29	LET ME DOWN EASY BILLY CURRINGTON (Mercury)
13	9	11	HOMEBOY ERIC CHURCH (EMI Nashville)	38	31	11	GIVE IN TO ME GARRETT HEDLUND & LEIGHTON MEESTER (Screen Gems Productions/Hudson Gate)
14	14	16	YOU LIE THE BAND PERRY (Republic Nashville)	39	39	71	CHICKEN FRIED ZAC BROWN BAND (Home Grown/Atlantic/Bigger Picture)
15	13	29	DON'T YOU WANNA STAY JASON ALDEAN WITH KELLY CLARKSON (Broken Bow)	40	33	62	THE HOUSE THAT BUILT ME MIRANDA LAMBERT (Columbia)
16	12	19	COLDER WEATHER ZAC BROWN BAND (Southern Ground/Atlantic/Bigger Picture)	41	42	5	THE STORY OF US TAYLOR SWIFT (Big Machine)
17	17	11	CRAZY GIRL ELI YOUNG BAND (Republic Nashville)	42	48	12	MY WISH RASCAL FLATTS (Lyric Street)
18	18	6	BAREFOOT BLUE JEAN NIGHT JAKE OWEN (RCA)	43	NEW	1	WHY YOU WANNA JANA KRAMER (Elektra Nashville/WMN)
19	19	12	WITHOUT YOU KEITH URBAN (Capitol Nashville)	44	37	24	COUNTRY BOY AARON LEWIS FEAT. GEORGE JONES & CHARLIE DANIELS (Sugarland)
20	21	16	HEART LIKE MINE MIRANDA LAMBERT (Columbia)	45	RE-ENTRY	1	SMILE UNCLE KRACKER (Top Dog/Atlantic/Bigger Picture)
21	23	11	IF HEAVEN WASN'T SO FAR AWAY JUSTIN MOORE (Valory)	46	NEW	1	ANYWAY MARTINA MCBRIDE (RCA/RMG)
22	20	44	STUCK LIKE GLUE SUGARLAND (Mercury)	47	40	31	BACK TO DECEMBER TAYLOR SWIFT (Big Machine)
23	22	72	NEED YOU NOW LADY ANTEBELLUM (Capitol Nashville)	48	41	33	WHO ARE YOU WHEN I'M NOT LOOKING BLAKE SHELTON (Reprise/WMN)
24	25	8	AM I THE ONLY ONE DIERKS BENTLEY (Capitol Nashville)	49	44	59	TOES ZAC BROWN BAND (Home Grown/Atlantic/Bigger Picture)
25	24	15	BLEED RED RONNIE DUNN (Arista Nashville)	50	43	11	LIVE A LITTLE KENNY CHESNEY (BNA)

Top-selling paid download country songs compiled from sales reports collected and provided by Nielsen SoundScan for week ending May 22, 2011. Charts update weekly on Thursdays at www.Billboard.Biz/charts. Copyright 2011, Prometheus Global Media, LLC and Nielsen SoundScan, Inc. All rights reserved.



Jake Owen delivered an acoustic performance at the Sony Music Nashville suite during the NARM convention in Los Angeles. From left are Sony Music Nashville VP sales Kerri Fox-Metoyer, Billboard director of charts Silvio Pietrolungo, Owen and NARM president Jim Donio.

Mercury Nashville welcomes
Scotty and Lauren to the family

*Scotty
McCreery*

*Lauren
Alaina*



"I Love You This Big"

already over 173k digital downloads.

Scotty has highest debut for a brand new artist's first single since the chart converted to BDS data in 1990.

32* DEBUT, 3.1 million audience impressions in only 4 days of airplay

"Like My Mother Does"

already over 124k digital downloads.

Thank you Country Radio for a great start!



19

MAY 31 2011		Billboard		HOT COUNTRY SONGS					AIRPLAY MONITORED BY nielsen BDS	
TW	LW	WKS ON CHART	TITLE/IMPRINT/LABEL	ARTIST	AUDIENCE (IN MILLIONS)		PLAYS			
					TW	+/-	TW	+/-	RANK	
1	1	12	OLD ALABAMA Arista Nashville ★★ No. 1 (2 weeks) ★★	Brad Paisley Featuring Alabama	37.010	+0.038	5491	-50	1	
2	4	17	WITHOUT YOU Capitol Nashville	Keith Urban	34.232	+3.376	4970	256	2	
3	2	21	I WON'T LET GO Big Machine	Rascal Flatts	33.240	-3.446	4918	-620	3	
4	5	13	MEAN Big Machine	Taylor Swift	32.239	+2.293	4673	182	4	
5	8	8	HONEY BEE Warner Bros./WMN ★ Most Increased Audience ★	Blake Shelton	30.769	+4.611	4536	479	5	
6	7	25	YOU LIE Republic Nashville	The Band Perry	28.855	+2.501	4449	470	6	
7	3	23	HEART LIKE MINE Columbia	Miranda Lambert	26.335	-5.688	3790	-825	10	
8	11	16	IF HEAVEN WASN'T SO FAR AWAY Valory	Justin Moore	24.934	+1.923	3925	227	8	
9	9	16	TOMORROW RCA	Chris Young	24.775	+1.067	3865	187	9	
10	10	17	BLEED RED Arista Nashville	Ronnie Dunn	23.655	+0.110	3938	16	7	
11	14	19	DIRT ROAD ANTHEM Broken Bow	Jason Aldean	20.766	+2.860	3257	348	12	
12	12	15	SOMEWHERE ELSE Show Dog-Universal	Toby Keith	20.251	+0.787	3277	72	11	
13	13	11	COUNTRY GIRL (SHAKE IT FOR ME) Capitol Nashville	Luke Bryan	19.875	+0.608	3102	93	14	
14	16	10	AM I THE ONLY ONE Capitol Nashville	Dierks Bentley	19.466	+2.155	3109	277	13	
15	17	4	JUST A KISS Capitol Nashville	Lady Antebellum	18.784	+3.239	3016	562	15	
16	18	7	KNEE DEEP Southern Ground/Atlantic/Bigger Picture	Zac Brown Band Featuring Jimmy Buffett	17.673	+3.028	2667	366	16	
17	20	11	TEENAGE DAUGHTERS Republic Nashville	Martina McBride	12.918	+0.284	2168	90	18	
18	21	15	HOMEBOY EMI Nashville ★ Airpower ★	Eric Church	12.338	+1.022	2145	151	19	
19	19	22	LOOK IT UP MCA Nashville	Ashton Shepherd	12.214	-0.437	2284	-57	17	
20	22	10	JUST FISHIN' Show Dog-Universal ★ Airpower ★	Trace Adkins	11.465	+1.069	1917	137	20	
21	27	4	YOU AND TEQUILA BNA	Kenny Chesney Featuring Grace Potter	10.283	+3.182	1652	498	23	
22	23	31	I WOULDN'T BE A MAN MCA Nashville	Josh Turner	10.114	+0.571	1860	89	21	
23	24	10	BAREFOOT BLUE JEAN NIGHT RCA	Jake Owen	9.752	+1.512	1687	202	22	
24	25	24	LAST NIGHT AGAIN Big Machine	Steel Magnolia	7.549	-0.099	1464	2	25	
25	28	15	CRAZY GIRL Republic Nashville	Eli Young Band	7.528	+0.985	1246	60	27	
26	26	27	WON'T BE LONELY LONG Columbia	Josh Thompson	6.900	-0.351	1477	-38	24	
27	29	7	LOVE DONE GONE Mercury	Billy Currington	6.054	+0.379	991	82	29	
28	30	6	TAKE A BACK ROAD Curb	Rodney Atkins	5.965	+1.015	1102	179	28	
29	31	21	LOVE DON'T RUN Curb	Steve Holy	5.463	+0.682	1246	96	26	
30	36	2	REMIND ME Arista Nashville ★ Most Added ★	Brad Paisley Duet With Carrie Underwood	3.744	+1.824	525	288	35	

Billboard pro

LEARN MORE ABOUT THIS EXCITING NEW PLATFORM FOR DEVELOPING ARTISTS AT OUR ROUNDTABLE DISCUSSION AT THE BILLBOARD COUNTRY MUSIC SUMMIT, 6/6-6/7, NASHVILLE TN

PRO.BILLBOARD.COM

Billboard AND cma COUNTRY MUSIC ASSOCIATION
COUNTRY MUSIC SUMMIT

IN ASSOCIATION WITH Show Clix TICKETING

MAY 31 2011		Billboard		HOT COUNTRY SONGS					AIRPLAY MONITORED BY nielsen BDS	
TW	LW	WKS ON CHART	TITLE/IMPRINT/LABEL	ARTIST	AUDIENCE (IN MILLIONS)		PLAYS			
					TW	+/-	TW	+/-	RANK	
31	32	8	COUNTRY MUST BE COUNTRY WIDE Valory	Brantley Gilbert	3.282	+0.461	652	93	32	
32	NEW	1	I LOVE YOU THIS BIG 19/Interscope/Mercury ★ Hot Shot Debut ★	Scotty McCreery	3.190	+3.190	317	317	45	
33	33	15	A BUNCHA GIRLS Warner Bros./WAR	Frankie Ballard	3.065	+0.396	672	35	31	
34	40	3	I GOT YOU Stoney Creek ★ Breaker ★	Thompson Square	2.882	+1.181	618	204	33	
35	34	6	TONIGHT Mercury	Sugarland	2.354	+0.055	437	8	39	
36	35	17	LET IT RAIN MCA Nashville	David Nail	2.236	-0.047	686	6	30	
37	38	11	MR. BARTENDER Columbia	Bradley Gaskin	2.020	+0.162	511	56	36	
38	37	20	1,000 FACES Mercury	Randy Montana	1.909	+0.017	571	13	34	
39	41	12	WANNA TAKE YOU HOME Emblem/Warner Bros./WAR	Gloriana	1.800	+0.144	343	-5	43	
40	44	10	AMEN Big Machine	Edens Edge	1.679	+0.294	429	17	40	
41	39	15	SHOTGUN GIRL Warner Bros./WMN	The JaneDear Girls	1.677	-0.042	458	-15	38	
42	54	2	I GOT NOTHIN' Capitol Nashville	Darius Rucker	1.628	+0.959	236	135	49	
43	43	7	WHEN LOVE GETS A HOLD OF YOU Starstruck/Valory	Reba	1.590	+0.021	411	25	41	
44	45	5	GENERATION LOVE Capitol Nashville	Jennette McCurdy	1.445	+0.173	261	32	47	
45	42	13	THE REASON WHY Capitol Nashville	Little Big Town	1.419	-0.227	402	-33	42	
46	46	7	DIDN'T I Broken Bow	James Wesley	1.304	+0.117	476	64	37	
47	47	5	STORM WARNING Atlantic/WMN	Hunter Hayes	1.273	+0.323	271	75	46	
48	48	5	STAYING'S WORSE THAN LEAVING Republic Nashville	Sunny Sweeney	0.997	+0.129	259	48	48	
49	NEW	1	LIKE MY MOTHER DOES 19/Interscope/Mercury	Lauren Alaina	0.977	+0.977	110	110	-	
50	53	8	OH, TONIGHT Pretty Damn Tough Josh Abbott Band Featuring Kacey Musgraves	0.964	+0.255	105	5	-		
51	49	11	MARY WAS THE MARRYING KIND MCA Nashville	Kip Moore	0.870	+0.034	331	-12	44	
52	60	2	TAKE IT OFF Show Dog-Universal	Joe Nichols	0.859	+0.437	152	57	57	
53	52	5	COLLIDE Top Dog/Atlantic/Bigger Picture Kid Rock Featuring Sheryl Crow & Bob Seger	0.741	-0.002	172	2	53		
54	50	17	COUNTRY BOY Stroudavarious Aaron Lewis Featuring George Jones & Charlie Daniels	0.712	-0.071	192	-9	52		
55	51	9	STAY UP LATE Curb	Heidi Newfield	0.656	-0.125	220	-18	50	
56	55	2	LET'S GET TOGETHER Rodeowave	Phil Vassar	0.595	+0.071	136	50	59	
57	57	3	TWENTY-ONE Average Joe's	Corey Smith	0.500	+0.027	108	2	-	
58	RE-ENTRY	2	ONE MORE DRINKIN' SONG Sea Gayle/Arista Nashville	Jerrod Niemann	0.492	+0.182	124	48	-	
59	NEW	1	FERRIS WHEEL Warner Bros./New Revolution	Jason Jones	0.397	+0.333	128	106	-	
60	56	6	I'M DOING ALRIGHT DMG/Nine North	Jacob Lyda	0.395	-0.129	169	-25	54	

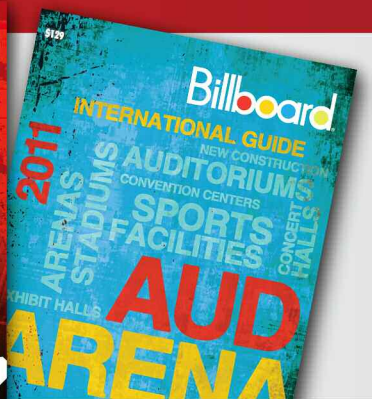
Billboard DIRECTORIES

THE DEFINITIVE MUSIC INDUSTRY RESOURCES

International Talent & Touring Guide

International Buyer's Guide

International AudArena Guide



ORDER TODAY! ONLINE at www.orderbillboard.com or CALL 800-562-2706 (U.S.) or 818-487-4582



SAMSUNG

PRESENT

Billboard

AND

CMA COUNTRY MUSIC ASSOCIATION

COUNTRY MUSIC SUMMIT

IN ASSOCIATION WITH Showlix TICKETING

LAST CHANCE TO REGISTER!

JUNE 6-7, 2011
RENAISSANCE DOWNTOWN
NASHVILLE, TN

NETWORK WITH THE BEST IN THE BIZ



Jay Frank
CMT



Pat Higdon
UMPG, Nashville



Laura Hutfless
Creative Artists Agency



Ken Levitan
(Trace Adkins, Kid Rock)



Brian O'Connell
Live Nation Country Music



Brad Turcotte
Big Machine Label Group



Erv Woolsley
(George Strait)

AND SO MANY MORE!

Full Schedule Available at:
CountryMusicSummit.com

PLUS:

- Keynote Q&As with Carrie Underwood and Kenny Chesney
- The CMA Global Artist Party
- AristoMedia Global Showcase
- Networking Happy Hour and Roundtables
- Closing Cocktail Reception - Hosted by Sony Music Nashville - Featuring Kellie Pickler

REGISTER TODAY AND SAVE!

CountryMusicSummit.com

For Information, call: 212.493.4263 or Conferences@Billboard.com

PRESENTING SPONSORS:



IN ASSOCIATION SPONSOR:



CONFERENCE SPONSORS:



MAY
31
2011

Billboard®

AIRPLAY
MONITORED BY
nielsen
BDS

COUNTRY

MOST ADDED™

TITLE/LABEL	ARTIST	ADDS
YOU AND TEQUILA BNA	Kenny Chesney Feat. Grace Potter	24
I LOVE YOU THIS BIG 19/Interscope/Mercury	Scotty McCreery	20
REMINDE ME Arista Nashville	Brad Paisley Duet With Carrie Underwood	18
TAKE A BACK ROAD Curb	Rodney Atkins	14
BAREFOOT BLUE JEAN NIGHT RCA	Jake Owen	13
I GOT YOU Stoney Creek	Thompson Square	12
COUNTRY MUST BE COUNTRY WIDE Valory	Brantley Gilbert	11
TAKE IT OFF Show Dog-Universal	Joe Nichols	11
ONE MORE DRINKIN' SONG Sea Gayle/Arista Nashville	Jerrod Niemann	11
I GOT NOTHIN' Capitol Nashville	Darius Rucker	10

MOST INCREASED AUDIENCE

TITLE/LABEL	ARTIST	GAIN (IN MILLIONS)
HONEY BEE Warner Bros./WMN	Blake Shelton	+4.611
WITHOUT YOU Capitol Nashville	Keith Urban	+3.376
JUST A KISS Capitol Nashville	Lady Antebellum	+3.239
I LOVE YOU THIS BIG 19/Interscope/Mercury	Scotty McCreery	+3.190
YOU AND TEQUILA BNA	Kenny Chesney Feat. Grace Potter	+3.182
KNEE DEEP Southern Ground/Atlantic/Bigger Picture	Zac Brown Band Feat. Jimmy Buffett	+3.028
DIRT ROAD ANTHEM Broken Bow	Jason Aldean	+2.860
YOU LIE Republic Nashville	The Band Perry	+2.501
MEAN Big Machine	Taylor Swift	+2.293
AM I THE ONLY ONE Capitol Nashville	Dierks Bentley	+2.155

MOST INCREASED PLAYS

TITLE/LABEL	ARTIST	GAIN
JUST A KISS Capitol Nashville	Lady Antebellum	+562
YOU AND TEQUILA BNA	Kenny Chesney Feat. Grace Potter	+498
HONEY BEE Warner Bros./WMN	Blake Shelton	+479
YOU LIE Republic Nashville	The Band Perry	+470
KNEE DEEP Southern Ground/Atlantic/Bigger Picture	Zac Brown Band Feat. Jimmy Buffett	+366
DIRT ROAD ANTHEM Broken Bow	Jason Aldean	+348
I LOVE YOU THIS BIG 19/Interscope/Mercury	Scotty McCreery	+317
REMINDE ME Arista Nashville	Brad Paisley Duet With Carrie Underwood	+288
AM I THE ONLY ONE Capitol Nashville	Dierks Bentley	+277
WITHOUT YOU Capitol Nashville	Keith Urban	+256

COUNTRY INDICATOR

MOST ADDED™

TITLE/LABEL	ARTIST	ADDS
REMINDE ME Arista Nashville	Brad Paisley Duet With Carrie Underwood	31
I GOT NOTHIN' Capitol Nashville	Darius Rucker	21
I GOT YOU Stoney Creek	Thompson Square	16
I LOVE YOU THIS BIG 19/Interscope/Mercury	Scotty McCreery	16
TAKE IT OFF Show Dog-Universal	Joe Nichols	12
LOVE DONE GONE Mercury	Billy Currington	11
YOU AND TEQUILA BNA	Kenny Chesney Feat. Grace Potter	9
BAREFOOT BLUE JEAN NIGHT RCA	Jake Owen	8
TAKE A BACK ROAD Curb	Rodney Atkins	7
LET'S GET TOGETHER Rodeowave	Phil Vassar	7

MOST INCREASED AUDIENCE

TITLE/LABEL	ARTIST	GAIN (IN MILLIONS)
REMINDE ME Arista Nashville	Brad Paisley Duet With Carrie Underwood	+1.034
KNEE DEEP Southern Ground/Atlantic/Bigger Picture	Zac Brown Band Feat. Jimmy Buffett	+0.797
TOMORROW RCA	Chris Young	+0.678
I GOT NOTHIN' Capitol Nashville	Darius Rucker	+0.672
HONEY BEE Warner Bros./WMN	Blake Shelton	+0.623
DIRT ROAD ANTHEM Broken Bow	Jason Aldean	+0.588
YOU AND TEQUILA BNA	Kenny Chesney Feat. Grace Potter	+0.581
I GOT YOU Stoney Creek	Thompson Square	+0.530
JUST A KISS Capitol Nashville	Lady Antebellum	+0.505
I LOVE YOU THIS BIG 19/Interscope/Mercury	Scotty McCreery	+0.457

MOST INCREASED PLAYS

TITLE/LABEL	ARTIST	GAIN
REMINDE ME Arista Nashville	Brad Paisley Duet With Carrie Underwood	+524
KNEE DEEP Southern Ground/Atlantic/Bigger Picture	Zac Brown Band Feat. Jimmy Buffett	+413
YOU AND TEQUILA BNA	Kenny Chesney Feat. Grace Potter	+359
I GOT NOTHIN' Capitol Nashville	Darius Rucker	+317
DIRT ROAD ANTHEM Broken Bow	Jason Aldean	+294
TOMORROW RCA	Chris Young	+291
JUST A KISS Capitol Nashville	Lady Antebellum	+264
HONEY BEE Warner Bros./WMN	Blake Shelton	+261
IF HEAVEN WASN'T SO FAR AWAY Valory	Justin Moore	+258
I GOT YOU Stoney Creek	Thompson Square	+209

Billboard®

SUBSCRIBE TO BILLBOARD TODAY TO RECEIVE:

- ✓ Weekly delivery of Billboard magazine
- ✓ 24/7 online access to Billboard.biz
- ✓ Billboard Bulletin – Daily summary of the top news stories sent directly to your inbox every weekday
- ✓ Archives – Unlimited access to over 50 years of Billboard's charts

VISIT: www.Billboard.biz/subscribe



MAY
31
2011



AIRPLAY
MONITORED BY
nielsen
BDS

NEW AND ACTIVE

TITLE/LABEL	ARTIST	TOTAL AUDIENCE	TOTAL STATIONS	ADDS
NUMBERS For The Lonely/Cracker Barrel/Quarterback	Jason Michael Carroll	0.390	16	1
FISH Bigger Picture	Craig Campbell	0.381	8	3
GONE LIKE THAT MCA Nashville	Josh Kelley	0.367	10	5
FAKE ID Warner Bros./WAR	Big & Rich With Gretchen Wilson	0.350	3	1
MY HEART CAN'T TELL YOU NO RCA	Sara Evans	0.319	2	1
I STILL BELIEVE IN THAT Stoney Creek	Ash Bowers	0.313	25	1

INDICATOR NEW AND ACTIVE

TITLE/LABEL	ARTIST	TOTAL PLAYS	TOTAL STATIONS	ADDS
STORM WARNING Atlantic/WMN	Hunter Hayes	105	12	4
LIKE MY MOTHER DOES 19/Interscope/Mercury	Lauren Alaina	96	7	7
FIVE MORE MINUTES Curb	Ashley Gearing	89	7	0
LOOKING FOR AMERICA Big Red M	Mark Wills	81	8	1
FISH Bigger Picture	Craig Campbell	80	7	4
QUIET KIND OF CRAZY WeBlast	Taylor Made	80	6	1

RECURRENTS

TW	TITLE/LABEL	ARTIST	TOTAL AUD. (IN MILLIONS)
1	A LITTLE BIT STRONGER RCA	Sara Evans	23.923
2	ARE YOU GONNA KISS ME OR NOT Stoney Creek	Thompson Square	17.859
3	LIVE A LITTLE BNA	Kenny Chesney	16.939
4	DON'T YOU WANNA STAY Broken Bow	Jason Aldean With Kelly Clarkson	15.211
5	I CAN'T LOVE YOU BACK Mercury	Easton Corbin	12.133
6	WHAT DO YOU WANT Sea Gayle/Arista Nashville	Jerrod Niemann	11.668
7	COLDER WEATHER Southern Ground/Anti-Text/Bigger Picture	Zac Brown Band	11.337
8	THIS Capitol Nashville	Darius Rucker	11.314
9	LET ME DOWN EASY Mercury	Billy Currington	10.871
10	FELT GOOD ON MY LIPS Curb	Tim McGraw	9.988

GOING FOR ADDS

6/6

BIG & RICH WITH GRETCHEN WILSON
Fake ID
Warner Bros./WAR

CRAIG CAMPBELL
Fish
Bigger Picture

JERROD NIEMANN
One More Drinkin' Song
Sea Gayle/Arista Nashville

LOCASH COWBOYS
You Got Me
R&J

6/13

KELLIE PICKLER
Tough
19/BNA

LISA MATASSA
Me Time
Nine North

O'DONNELLS
She Leaves The Light On
Song Valley

6/20

COLT FORD FEAT. CRAIG MORGAN
She Likes To Ride In Trucks
Average Joe's

DJ MILLER
Between Sundays
Evergreen/Nine North/Spinville

JT HODGES
Hunt You Down
Show Dog-Universal

SARA EVANS
My Heart Can't Tell You No
RCA



TEXAS REGIONAL RADIO REPORT

WEEK ENDING
MAY
29
2011

TW	LW	WKS ON CHART	TITLE (LABEL)	ARTIST	TW SPINS	SPIN +/-	TW	LW	WKS ON CHART	TITLE (LABEL)	ARTIST	TW SPINS	SPIN +/-
1	2	18	I HOLD THE BOTTLE YOU HOLD THE WHEEL **1 Week at 1** (Yep Roc)	Reckless Kelly	1278	0	16	17	17	INTERSTATE (MCA Nashville)	Randy Rogers Band	759	10
2	3	14	HALFWAY TO HOUSTON (Ari-Tex)	James Lann	1257	27	17	18	18	FOR A WHILE (Independent)	Ryan Beaver	754	21
3	1	15	CRAZY GIRL (Republic Nashville)	Eli Young Band	1243	-58	18	16	16	THE CRICKET SONG (Independent)	Rich O'Toole	742	-25
4	7	14	BLOOD RED LINCOLN (Independent)	Bleu Edmondson	1200	143	19	21	16	SHE'S THE ONLY REASON (Winding Road)	Bart Crow Band	737	53
5	6	15	THIS AIN'T THE FIRST TIME (Smith)	Eleven Hundred Springs	1150	79	20	20	10	TOO BIG TO FAIL (Smith)	Brandon Jenkins	720	34
6	4	19	LONG WAY TO GET (Blind Nello)	Max Stalling	1135	-36	21	19	19	BREAKIN' STUFF (Propel)	George Ducas	709	-21
7	8	10	LEAD ME ON (Independent)	Cory Morrow	1074	43	22	40	3	BALLAD OF ROSALIE (Independent)	Cody Canada & The Departed	707	223
8	11	16	SAY IT AGAIN (Smith)	Tejas Brothers	1022	100	23	23	14	WHISKEY DAYS (Independent)	JB and The Moonshine Band	670	23
9	9	15	BEST FOR LAST (BIG Label)	Aaron Watson	1012	20	24	25	16	MY GIRL (Roustabout)	John David Kent	657	22
10	5	20	YOU'RE NOT LOOKIN' FOR (Smith)	Deryl Dodd	1008	-97	25	26	14	WON'T LET IT SHOW (Independent)	Mike Ryan	645	19
11	13	14	GONE AIN'T FAR ENOUGH (Carved)	No Justice	962	86	26	22	15	JESUS AND JOHNNY CASH (Winding Road)	Jarrod Birmingham	644	-5
12	12	18	TEXAS KIND OF WAY (Independent)	Cody Johnson	947	52	27	28	7	LONG HOT SUMMER DAYS (Independent)	Turnpike Troubadors	598	15
13	10	19	LORD I HOPE THIS DAY IS GOOD (Smith)	Brandon Rhyder	905	-59	28	27	15	KISSED YOU IN THE RAIN (Winding Road)	Matt Kimbrow	596	10
14	15	16	BAR, GUITAR AND HONKY TONK CROWD (Independent)	Whiskey Myers	801	32	29	24	19	LIE BABY LIE (Apex Nashville)	Sean McConnell	581	-65
15	14	20	BLUE EYED ANGELS (Carnival)	Rob Baird	783	-13	30	32	6	HONKY TONK HEAVEN (Independent)	Jason Cassidy	577	44

Texas Regional Radio Report Top 100 is compiled from weekly online playlist reports from 87 radio stations located in Texas and surrounding states, including reports from specialty shows, internet and satellite radio outlets. Songs are ranked by total plays. For tracking, complete chart methodology and more information, visit www.texasregionalradio.com, or contact Dave Smith at 817-283-7984. Copyright 2011, Texas Regional Radio Report

MAY 31 2011		Billboard		COUNTRY INDICATOR				
TW	LW	WKS ON CHART	TITLE/IMPRINT/LABEL	ARTIST	PLAYS		AUDIENCE (IN MILLIONS)	
					TW	+/-		
1	2	17	WITHOUT YOU Capitol Nashville	Keith Urban	3795	+28	7.602	
2	1	12	OLD ALABAMA Arista Nashville	Brad Paisley Feat. Alabama	3775	-246	7.826	
3	3	9	HONEY BEE Warner Bros./WMN	Blake Shelton	3744	+261	7.633	
4	5	22	YOU LIE Republic Nashville	The Band Perry	3565	+175	7.209	
5	6	16	IF HEAVEN WASN'T SO FAR AWAY Valory	Justin Moore	3519	+258	7.173	
6	9	16	TOMORROW RCA	Chris Young	3393	+291	6.923	
7	7	12	MEAN Big Machine	Taylor Swift	3277	+67	6.506	
8	10	15	SOMEWHERE ELSE Show Dog-Universal	Toby Keith	3131	+130	6.266	
9	8	18	BLEED RED Arista Nashville	Ronnie Dunn	2996	-171	6.030	
10	13	9	DIRT ROAD ANTHEM Broken Bow	Jason Aldean	2737	+294	5.548	
11	12	10	AM I THE ONLY ONE Capitol Nashville	Dierks Bentley	2679	+153	5.337	
12	11	11	COUNTRY GIRL (SHAKE IT FOR ME) Capitol Nashville	Luke Bryan	2623	+32	5.311	
13	15	7	KNEE DEEP Southern Ground/Atlantic/Bigger Picture	Zac Brown Band Feat. Jimmy Buffett	2612	+413	5.341	
14	14	4	JUST A KISS Capitol Nashville	Lady Antebellum	2507	+264	5.058	
15	17	11	JUST FISHIN' Show Dog-Universal	Trace Adkins	2215	+88	4.524	
16	18	11	TEENAGE DAUGHTERS Republic Nashville	Martina McBride	2110	+48	4.258	
17	19	14	HOMEBOY EMI Nashville	Eric Church	1959	+52	3.927	
18	20	4	YOU AND TEQUILA BNA	Kenny Chesney Feat. Grace Potter	1845	+359	3.600	
19	21	8	BAREFOOT BLUE JEAN NIGHT RCA	Jake Owen	1660	+185	3.326	
20	23	15	CRAZY GIRL Republic Nashville	Eli Young Band	1351	+46	2.643	
21	24	6	TAKE A BACK ROAD Curb	Rodney Atkins	1315	+130	2.695	
22	22	30	WON'T BE LONELY LONG Columbia	Josh Thompson	1285	-40	2.752	
23	26	7	LOVE DONE GONE Mercury	Billy Currington	1274	+153	2.504	
24	25	22	LAST NIGHT AGAIN Big Machine	Steel Magnolia	1146	-11	2.250	
25	27	20	LOVE DON'T RUN Curb	Steve Holy	976	+61	2.010	
26	28	6	TONIGHT Mercury	Sugarland	867	+74	1.754	
27	50	2	REMIND ME Arista Nashville	Brad Paisley Duet With Carrie Underwood	725	+524	1.336	
28	32	4	I GOT YOU Stoney Creek	Thompson Square	685	+209	1.481	
29	29	12	THE REASON WHY Capitol Nashville	Little Big Town	604	+26	0.934	
30	30	8	WHEN LOVE GETS A HOLD OF YOU Starstruck/Valory	Reba	602	+48	1.121	

BILLBOARD COUNTRY INDICATOR PANEL – 100 STATIONS

Abilene, Texas	KEAN	Evansville, Ind.	WKDQ	Lubbock, Texas	KLLL	Sheboygan, Wis.	WBFM
Alexandria, La.	KRRV	Fargo, N.D.	KVOX	Lufkin, Texas	KYKS	Sioux City, Iowa	KSUX
Amarillo, Texas	KGNC	Fayetteville, N.C.	WKML	Mason City, Iowa	KIAI	South Bend, Ind.	WBYT
Atlantic City, N.J.	WPUR	Flagstaff, Ariz.	KAFF	Medford, Ore.	KRWQ	Terre Haute, Ind.	WTHI
Beaumont, Texas	KYKR	Flint, Mich.	WFBE	Meridian, Miss.	WOKK	Topeka, Kan.	WIBW
Beckley, W. Va.	WJLS	Florence, Ala.	WXFL	Morgantown, W. Va.	WKKW	Traverse City, Mich.	WTCM
Billings, Mont.	KCTR	Florence, S.C.	WEGX	Muncie, Ind.	WMDH	Tupelo, Miss.	WWZD
Biloxi, Miss.	WZKX	Ft. Smith, Ark.	KTCS	Muskegon, Mich.	WMUS	Tuscaloosa, Ala.	WFFN
Binghamton, N.Y.	WHWK	Frederick, Md.	WFRE	Myrtle Beach, S.C.	WGTR	Tyler, Texas	KYKX
Bloomington, Ill.	WBWN	Fredericksburg, Va.	WFLS	New London, Conn.	WCTY	Utica, N.Y.	WFRG
Bluefield, W. Va.	WHKX	Green Bay, Wis.	WNCY	Odessa, Texas	KHKX	Visalia, Calif.	KJUG
Burlington, Vt.	WOKO	Hagerstown, Md.	WAYZ	Palm Springs, Calif.	KPLM	Waco, Texas	WACO
Charleston, W. Va.	WKWS	Hot Springs, Ark.	KQUS	Panama City, Fla.	WPAP	Wausau, Wis.	WDEZ
College Station, Texas	KAGG	Huntington, Ky.	WDGG	Portland, Maine	WPOR	Wheeling, W. Va.	WOVK
Columbus, Ga.	WKCW	Huntington, W. Va.	WTRC		WTHT	Williamsport, Pa.	WILQ
Cookeville, Tenn.	WGSQ	Idaho Falls, Idaho	KTHK	Poughkeepsie, N.Y.	WRWD	Yakima, Wash.	KXDD
Corpus Christi, Texas	KFTX	Jonesboro, Ark.	KDXY	Rapid City, S.D.	KOUT	Youngstown, Ohio	WWGY
	KRYS	Joplin, Mo.	KIXQ	Rocky Mount, N.C.	WDWG	Citadel Media	TODAY'S BEST COUNTRY
Dothan, Ala.	WTVY	Kalamazoo, Mich.	WNWN	Saginaw, Mich.	WCEN	Dial Global	HOT COUNTRY
Duluth, Minn.	KKCB	Kalispell, Mont.	KDBR		WKCC		MAINSTREAM COUNTRY
Eau Claire, Wis.	WAXX	Lafayette, Ind.	WKOA	Salina, Kan.	KYEZ	Music Choice	TODAY'S COUNTRY
	WQRB	Lake Havasu/Bullhead City, Ariz.	KFLG	Salisbury, Md.	WKTT	Sirius XM	THE HIGHWAY
	WRSF	Laurel, Miss.	WBBN	San Angelo, Texas	KGKL		
Elizabeth City, N.C.	WTRF	Lebanon, N.H.	WXXX	San Luis Obispo, Calif.	KKJG		
Erie, Pa.	WXTA	Lincoln, Neb.	KFGE	Santa Barbara, Calif.	KRAZ		
	KKNU		KZKX	Santa Maria, Calif.	KSNI		

MAY 31 2011		Billboard		COUNTRY INDICATOR			
TW	LW	WKS ON CHART	TITLE/IMPRINT/LABEL	ARTIST	PLAYS		AUDIENCE (IN MILLIONS)
					TW	+/-	TW
31	46	2	I GOT NOTHIN' Capitol Nashville	Darius Rucker	562	+317	1.202
32	33	6	COUNTRY MUST BE COUNTRY WIDE Valory	Brantley Gilbert	558	+101	0.983
33	31	11	MR. BARTENDER Columbia	Bradley Gaskin	558	+23	1.071
34	34	11	A BUNCHA GIRLS Warner Bros./WAR	Frankie Ballard	434	+16	0.863
35	35	16	HARD TIME MOVIN' ON Gecko	David Bradley Feat. Rodney Crowell	419	+9	0.774
36	36	7	DIDN'T I Broken Bow	James Wesley	408	+15	0.744
37	39	4	I COULD BE THE ONE Capstone	Glen Templeton	405	+54	0.709
38	37	17	LET IT RAIN MCA Nashville	David Nail	379	0	0.758
39	49	3	TAKE IT OFF Show Dog-Universal	Joe Nichols	373	+156	0.773
40	40	6	IN GOD'S TIME Show Dog-Universal	Randy Houser	361	+24	0.633
41	41	11	SHOTGUN GIRL Warner Bros./WMN	The JaneDear Girls	337	+11	0.644
42	43	5	STAYING'S WORSE THAN LEAVING Republic Nashville	Sunny Sweeney	332	+53	0.619
43	38	13	HARD ROAD Ride	Steve Azar	307	-70	0.525
44	42	11	WHEN THE SMOKE CLEARS Black River	Due West	303	+20	0.613
45	45	17	COUNTRY BOY R&J	Aaron Lewis Feat. George Jones & Charlie Daniels	269	0	0.655
46	48	8	NUMBERS For The Lonely/Cracker Barrel/Quarterback	Jason Michael Carroll	259	+29	0.613
47	53	2	LET'S GET TOGETHER Rodeowave	Phil Vassar	249	+69	0.568
48	47	4	GENERATION LOVE Capitol Nashville	Jennette McCurdy	246	+5	0.428
49	51	3	COLLIDE Top Dog/Atlantic/Bigger Picture	Kid Rock Feat. Sheryl Crow & Bob Seger	231	+34	0.370
50	44	14	SOMETHING TO DO WITH YOUR HANDS Black River	Sarah Darling	229	-42	0.463
51	52	5	PAPER HEART Skyville	Stealing Angels	222	+25	0.499
52	NEW	1	I LOVE YOU THIS BIG 19/Interscope/Mercury ★ Hot Shot Debut ★	Scotty McCreery	193	+193	0.457
53	54	8	WANNA TAKE YOU HOME Emblem/Warner Bros./WAR	Gloriana	179	+18	0.411
54	NEW	1	ONE MORE DRINKIN' SONG Sea Gayle/Arista Nashville	Jerrod Niemann	149	+102	0.189
55	55	26	OH, TONIGHT Pretty Damn Tough	Josh Abbott Band Feat. Kacey Musgraves	143	0	0.227
56	57	2	GIRL WITH A FISHING ROD Edge/Lofton Creek	Kelly Parkes	136	+15	0.213
57	56	6	AMEN Big Machine	Edens Edge	135	+11	0.258
58	NEW	1	WHERE WOULD YOUR HEART BE Identical/Turnpike	Tonja Rose	130	+48	0.179
59	58	3	MAYBE TONIGHT Emrose/R&J	Margaret Durante	129	+9	0.270
60	59	2	TWENTY YEARS LATE Aria Nashville/Turnpike	David St. Romain	118	+3	0.157

DON'T MISS THE BUZZ



ORDER NOW SUPPLIES LIMITED.

ORDER BACK ISSUES AT www.orderbillboard.com

MAY
31
2011

CALLOUT AMERICA

TW	LW	TITLE/IMPRINT/LABEL	ARTIST	TOTAL PASSION	POSITIVE	INDEX	NEUTRAL	DISLIKE	STRONGLY DISLIKE
1	2	I WOULDN'T BE A MAN MCA Nashville	Josh Turner	25.9%	68.9%	3.19	23.3%	7.6%	0.2%
2	1	I WON'T LET GO Big Machine	Rascal Flatts	30.5%	67.6%	3.20	22.7%	8.2%	1.5%
3	3	SOMEWHERE ELSE Show Dog-Universal	Toby Keith	23.8%	66.5%	3.14	26.3%	6.7%	0.4%
4	4	MEAN Big Machine	Taylor Swift	28.3%	66.3%	3.16	23.5%	8.9%	1.3%
5	6	TOMORROW RCA	Chris Young	22.2%	63.5%	3.11	27.2%	8.9%	0.4%
6	9	WITHOUT YOU Capitol Nashville	Keith Urban	21.6%	62.2%	3.10	25.9%	10.8%	1.1%
7	8	OLD ALABAMA Arista Nashville	Brad Paisley w Alabama	20.9%	62.1%	3.11	28.0%	8.6%	1.3%
8	13	HONEY BEE Warner Bros/WMN	Blake Shelton	20.7%	60.5%	3.07	28.5%	10.4%	0.6%
9	11	BLEED RED Arista Nashville	Ronnie Dunn	21.6%	60.1%	3.07	26.3%	12.3%	1.3%
10	12	AM I THE ONLY ONE Capitol Nashville	Dierks Bentley	19.4%	60.0%	3.03	28.5%	8.6%	2.8%
11	5	COUNTRY GIRL (SHAKE IT FOR ME) Capitol Nashville	Luke Bryan	19.9%	59.6%	3.04	26.8%	11.0%	2.6%
12	10	I CAN'T LOVE YOU BACK Mercury	Easton Corbin	17.3%	59.4%	3.05	28.9%	11.2%	0.4%
13	15	RAYMOND Atlantic/WAR	Brett Eldredge	16.0%	58.7%	3.24	28.3%	12.1%	0.9%
14	16	IF HEAVEN WASN'T SO FAR AWAY Valory	Justin Moore	15.8%	57.0%	3.02	30.2%	11.7%	1.1%
15	18	WON'T BE LONELY LONG Columbia	Josh Thompson	12.3%	56.5%	2.99	28.9%	13.1%	1.5%
16	14	YOU LIE Republic Nashville	The Band Perry	18.6%	56.2%	3.26	29.2%	12.7%	1.9%
17	17	KNEE DEEP Southern Ground/Atlantic/Bigger Picture	Zac Brown Band f Jimmy Buffett	14.3%	53.8%	2.92	27.2%	16.4%	2.6%
18	20	DIRT ROAD ANTHEM Broken Bow	Jason Aldean	13.6%	53.3%	2.94	30.0%	14.0%	2.6%
19	23	COUNTRY MUST BE COUNTRY WIDE Valory	Brantley Gilbert	16.8%	52.7%	2.92	30.0%	13.2%	4.1%
20	27	TONIGHT Mercury	Sugarland	14.0%	52.3%	2.98	32.4%	13.6%	1.7%
21	25	TAKE A BACK ROAD Curb	Rodney Atkins	7.3%	50.8%	2.87	34.1%	14.3%	0.9%
22	26	LOVE DON'T RUN Curb	Steve Holy	10.8%	50.4%	2.93	37.1%	11.6%	0.9%
23	24	LAST NIGHT AGAIN Big Machine	Steel Magnolia	10.8%	50.3%	2.95	36.5%	12.1%	1.1%
24	30	LET IT RAIN MCA Nashville	David Nail	10.4%	49.9%	2.90	35.4%	13.4%	1.3%
25	21	JUST FISHIN' Show Dog-Universal	Trace Adkins	11.9%	49.2%	2.94	39.3%	10.6%	0.9%
26	29	CRAZY GIRL Republic Nashville	Eli Young Band	6.7%	48.9%	2.89	38.8%	10.3%	1.9%
27	28	YOU AND TEQUILA BNA	Kenny Chesney w Grace Potter	10.5%	48.9%	2.72	31.6%	16.9%	2.6%
28	-	I GOT YOU Stoney Creek	Thompson Square	7.3%	48.9%	2.71	36.1%	14.1%	1.0%
29	32	A BUNCHA GIRLS Warner Bros/WAR	Frankie Ballard	8.9%	48.8%	2.89	37.8%	10.8%	2.6%
30	-	LOVE DONE GONE Mercury	Billy Currington	12.1%	48.2%	2.74	37.4%	14.1%	0.3%
31	31	LOOK IT UP MCA Nashville	Ashton Shepherd	10.6%	47.6%	2.92	33.6%	14.9%	3.9%
32	22	JUST A KISS Capitol Nashville	Lady Antebellum	7.7%	47.0%	2.70	33.2%	18.2%	1.6%
33	33	BAREFOOT BLUE JEAN NIGHT RCA	Jake Owen	8.0%	46.0%	3.19	38.2%	13.8%	1.9%
34	35	TEENAGE DAUGHTERS Republic Nashville	Martina McBride	9.7%	43.2%	2.84	33.0%	20.3%	3.5%
35	34	HOMEBOY EMI Nashville	Eric Church	8.2%	42.5%	2.84	35.9%	19.4%	2.2%

The Callout America sample is 450 persons in each weekly report. Sample is 50% Male/Female and taken from 20 U.S. Markets. Demos are evenly balanced in 18-24, 25-34, 35-44 and 45-54 cells. Song scores are on a 1 to 5 differential with "1" meaning strong dislike and "5" meaning like it a lot. The positive index is an average of all 1 to 5 scores. Total Positive is the combined 4 and 5 scores. Market breakouts by geographical region are; MIDWEST: Cincinnati, Indianapolis, Kansas City, Omaha and Wichita. SOUTH: Atlanta, Charleston, Charlotte, Mobile/Pensacola and Nashville. EAST: Philadelphia, Pittsburgh, Providence RI, Rochester, Virginia Beach. WEST: Colorado Springs, Houston, Modesto, Phoenix and Portland OR.

CHART LEGEND

RANKINGS

Hot Country Songs is ranked by total audience impressions for the week ending Sunday based on monitored airplay of 127 stations by Nielsen BDS. Audience totals on the chart are derived, in part, using certain Arbitron Inc. copyrighted Persons 12+ audience estimates (under license © 2011, Arbitron Inc.). Country Indicator is tabulated using reported playlists and Nielsen BDS-monitored airplay at 100 stations, ranked by total plays.

BULLETS

● Awarded on Hot Country Songs to titles gaining audience or remaining flat from the previous week. A song will also receive a bullet if its percentage loss in audience does not exceed the percentage of monitored station downtime for the format.

Titles that decline in audience but increase in detections will also receive a bullet if the total audience erosion for the week does not exceed 3%. Bullets are awarded on Country Indicator to titles gaining plays or remaining flat from the previous week.

TIES

On Hot Country Songs, if two songs are tied in total audience, the song with the larger increase in audience is placed first. On Country Indicator, if two songs are tied in total plays, the song with the larger increase in plays is placed first.

RECURRENTS

On Hot Country Songs, descending titles below No. 10 in either audience or detections are moved to recurrent after 20 weeks, provided that they

are not still gaining enough audience points to bullet or if they rank below No. 10 and post a third consecutive week of audience decline, regardless of total chart weeks. On Country Indicator, descending, non-bulleted titles below No. 10 are moved to recurrent after 20 weeks.

HOT SHOT DEBUT

Awarded to the highest-ranking new entry on Hot Country Songs and Country Indicator, respectively.

MOST ADDED

The total number of new adds officially reported to Billboard by each reporting station, or by an automatic-add threshold (seven plays for the first time in a chart tracking week, according to Nielsen BDS) for stations that do not report adds.

MOST INCREASED AUDIENCE/PLAYS

Most Increased Audience on Hot Country Songs and Most Increased Plays on Country Indicator list the songs with the greatest week-to-week increases in total audience or plays, respectively.

AIRPOWER

Awarded on Hot Country Songs to titles ranking inside top 20 in plays and audience rankings for the first time, with increases in both plays and audience.

BREAKER

Awarded on Hot Country Songs to titles achieving airplay (at least one detection) at 60% of reporting stations for the first time.

MAY
31
2011



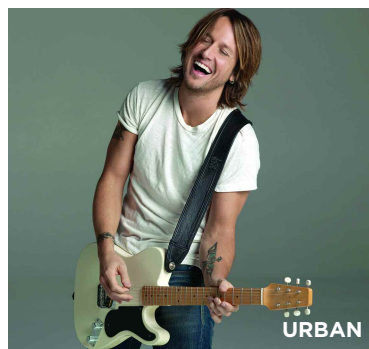
RADIOFEEDBACK

TW	LW	TITLE/IMPRINT/LABEL	ARTIST	TOTAL PASSION	POSITIVE	INDEX	NEUTRAL	DISLIKE	STRONGLY DISLIKE
1	1	TOMORROW RCA	Chris Young	54.7%	80.2%	4.25	12.3%	4.9%	2.6%
2	2	WITHOUT YOU Capitol Nashville	Keith Urban	47.0%	74.5%	4.09	16.8%	5.3%	3.5%
3	3	HONEY BEE Warner Bros./WMN	Blake Shelton	48.0%	74.0%	4.12	18.0%	5.9%	2.1%
4	4	BLEED RED Arista Nashville	Ronnie Dunn	45.6%	73.7%	4.04	16.4%	4.6%	5.3%
5	6	I WON'T LET GO Big Machine	Rascal Flatts	45.8%	72.3%	3.97	13.3%	7.3%	7.1%
6	7	I WOULDN'T BE A MAN MCA Nashville	Josh Turner	40.2%	71.4%	4.00	19.7%	6.7%	2.3%
7	8	IF HEAVEN WASN'T SO FAR AWAY Valory	Justin Moore	34.9%	70.2%	3.96	23.0%	4.9%	2.0%
8	9	I CAN'T LOVE YOU BACK Mercury	Easton Corbin	37.7%	70.1%	3.96	21.1%	6.0%	2.8%
9	11	OLD ALABAMA Arista Nashville	Brad Paisley f Alabama	41.7%	67.7%	3.91	19.4%	7.4%	5.4%
10	10	RAYMOND Atlantic/WAR	Brett Eldredge	39.9%	67.5%	3.89	19.8%	7.5%	5.2%
11	12	CRAZY GIRL Republic Nashville	Eli Young Band	26.5%	63.4%	3.78	26.2%	8.8%	1.6%
12	18	JUST A KISS Capitol Nashville	Lady Antebellum	30.9%	63.1%	3.78	26.5%	5.0%	5.4%
13	13	JUST FISHIN' Show Dog-Universal	Trace Adkins	26.0%	62.3%	3.74	25.7%	9.4%	2.6%
14	17	YOU LIE Republic Nashville	The Band Perry	34.8%	61.4%	3.73	21.6%	10.6%	6.4%
15	14	LOOK IT UP MCA Nashville	Ashton Shepherd	36.2%	61.3%	3.66	17.1%	11.4%	10.1%
16	19	LOVE DON'T RUN Curb	Steve Holy	28.5%	61.3%	3.75	26.9%	9.1%	2.8%
17	16	LAST NIGHT AGAIN Big Machine	Steel Magnolia	25.9%	61.0%	3.69	24.8%	10.2%	4.0%
18	21	LET IT RAIN MCA Nashville	David Nail	28.7%	60.1%	3.75	28.3%	9.6%	2.0%
19	20	MEAN Big Machine	Taylor Swift	34.3%	59.5%	3.50	13.5%	10.7%	16.3%
20	22	SOMEWHERE ELSE Show Dog-Universal	Toby Keith	30.0%	58.6%	3.69	25.4%	12.2%	3.8%
21	23	KNEE DEEP Southern Ground/Atlantic/Bigger Picture	Zac Brown Band f Jimmy Buffett	27.6%	58.2%	3.65	27.1%	8.2%	6.4%
22	25	TAKE A BACK ROAD Curb	Rodney Atkins	20.6%	56.1%	3.59	30.5%	9.6%	3.8%
23	24	AM I THE ONLY ONE Capitol Nashville	Dierks Bentley	31.1%	56.0%	3.53	19.3%	15.9%	8.9%
24	—	LOVE DONE GONE Mercury	Billy Currington	25.1%	55.9%	3.63	29.5%	11.2%	3.4%
25	26	TEENAGE DAUGHTERS Republic Nashville	Martina McBride	28.3%	54.2%	3.52	22.9%	14.9%	8.0%
26	27	WON'T BE LONELY LONG Columbia	Josh Thompson	24.2%	54.2%	3.58	29.1%	12.6%	4.1%
27	—	YOU AND TEQUILA BNA	Kenny Chesney f Grace Potter	21.5%	53.3%	3.46	24.2%	15.9%	6.6%
28	30	TONIGHT Mercury	Sugarland	25.9%	52.9%	3.49	24.5%	15.2%	7.4%
29	29	HOMEBOY EMI Nashville	Eric Church	24.5%	52.6%	3.46	23.5%	16.4%	7.4%
30	31	COUNTRY GIRL (SHAKE IT FOR ME) Capitol Nashville	Luke Bryan	31.7%	51.1%	3.41	21.0%	14.1%	13.8%
31	32	DIRT ROAD ANTHEM Broken Bow	Jason Aldean	29.7%	48.1%	3.29	19.7%	15.2%	17.0%
32	34	COUNTRY MUST BE COUNTRY WIDE Valory	Brantley Gilbert	17.3%	45.1%	3.29	30.3%	16.0%	8.6%
33	33	BAREFOOT BLUE JEAN NIGHT RCA	Jake Owen	18.4%	44.6%	3.27	29.8%	15.8%	9.9%
34	35	A BUNCHA GIRLS Warner Bros./WAR	Frankie Ballard	14.1%	43.3%	3.24	31.1%	18.0%	7.5%
35	—	I GOT YOU Stoney Creek	Thompson Square	15.0%	40.1%	3.27	36.4%	18.4%	5.1%

RADIOFEEDBACK THIS WEEK

KEITH URBAN SCORES HIGH ON RADIOFEEDBACK

Keith Urban remains strong with active P1 listeners, who rank "Without You" as the No. 2 song 12-plus and No. 3 passion. Core 25-44s are at No. 4 and No. 3 passion. Younger 18-34s are at No. 5 and No. 3 passion. Females 12-plus are at No. 3 positive and passion. Core males 25-44 score "You" No. 2 overall and No. 5 passion.



Rascal Flatts moves into the top five with "I Won't Let Go" at No. 5, up from No. 10 two weeks ago. It grabs a No. 4 passion score. Females are at No. 5 and No. 4 passion. Adult females 25-54 are at No. 6 and No. 5 passion. Overall males 12-plus score it No. 7 positive and passion. Male

strength is with 35-plus at No. 4 positive and passion.

Lady Antebellum makes early strides with "Just a Kiss" at No. 12, up from a No. 18 debut last week. "Kiss" is also at No. 16 passion. Adults 25-54 push it to No. 13, up from No. 15. Core 25-44s rank it No. 14 with a No. 15 passion mark. Females 12-plus place it at No. 13 overall and No. 14 passion with younger 18-34 females at No. 14 and No. 9 passion. Core 25-44 males are at No. 9.

Steve Holy stays strong with "Love Don't Run" at No. 16, up from No. 19. It maintains a No. 20 passion score. Core 25-44s come in at No. 11 and No. 18 passion. Younger 18-34 listeners are at No. 17 and No. 22 passion. Listeners 35-plus are at No. 14. Females 12-plus rank "Run" No. 12 overall and No. 17 passion. Core 25-44 females are at No. 14. Male strength is with core 25-44s at No. 8, up from No. 10.

—John Hart, Bullseye Marketing Research
email: hart@bullsi.com

Radiofeedback is solicited weekly via email to Country Radio listeners and fans in Radio Station Loyal Listener data bases and from Social Media Data Bases. Listeners score 40 songs online via a link to the Radiofeedback study. Song clips are :20 seconds in length and are scored on a 1 to 5 differential with "1" meaning "I Don't Like This Song At All" and "5" meaning "I Like this Song A Lot" they also answer a follow up question asking if they hear the song "Too Much", "Not Enough" or "Just About Right" on the radio. Radiofeedback's Top 30 contributing markets are: Atlanta, Austin, Birmingham, Boston, Buffalo, Charlotte, Chicago, Dallas, Denver, Houston, Indianapolis, Jacksonville FL, Knoxville, Las Vegas, Los Angeles, Minneapolis, Nashville, New York City, Omaha, Orlando, Oklahoma City, Philadelphia, Phoenix, Pittsburgh, Portland, San Antonio, San Diego, Seattle, St. Louis and Washington DC. For more information, contact John Hart (hart@bullsi.com).

MAY
31
2011

Billboard® HOT COUNTRY SONGS INDEX

TITLE Publishing-Licensing Org.
(Songwriter) Chart Position**1,000 FACES** Sony/ATV Tree Publishing Company, BMI/Tomdouglassmusic, BMI (R.Montana, T.Douglas) **38**

A

AMEN Sony/ATV Tree Publishing Company, BMI/401 Kye Music, BMI/Fouche River, BMI/Kyeiya con Dios Publishing, BMI/Ink Pen Mama Music, SESAC/Songs of Maxx Publishing, SESAC/Tunes of R and T Direct, SESAC/Syd And Sophie Songs, SOCAN/Music Services, BMI (S.Black, H.Blaylock, C.Gravitt, G.O'Brien) **40****AM I THE ONLY ONE** Sony/ATV Tree Publishing Company, BMI/Beavertime Tunes, BMI/Reynsong Publishing Corp., BMI/Wha Ya Say Music, BMI/Big White Tracks, ASCAP (J.Beavers, J.R.Stewart, D.Bentley) **14**

B

BAREFOOT BLUE JEAN NIGHT Music Of Cal IV, BMI/Cal IV Entertainment, LLC, BMI/Cal IV Songs, ASCAP/Papertown Songs, SOCAN (D.Altman, E.Paslay, T.Sawchuk) **23****BLEED RED** Songs Of Universal, Inc., BMI/Super Phonic Music, BMI/EverGreen Copyrights, BMI/Pretty Woman Publishing, LLC, BMI (A.Dorff, T.L.James) **10****A BUNCH A GIRLS** Sony/ATV Tree Publishing Company, BMI/WB Music Corp., ASCAP/Melissa's Money Music Publishing, ASCAP/Get A Load Of This Music, ASCAP/EMI Blackwood Music Inc., BMI/Rhettneck Music, BMI/String Stretcher Music, BMI (F.Ballard, B.Hayslip, D.Davidson, R.Akins) **33**

C

COLLIDE RJR Music Publishing, BMI/Songs Of Kobalt Music Publishing America, Inc., BMI/Jo Ray Dean Music, BMI/Sony/ATV Songs LLC, BMI (R.J.Ritchie, M.Young) **53****COUNTRY BOY** WB Music Corp., ASCAP/Greenfund, ASCAP (A.Lewis) **54****COUNTRY GIRL (SHAKE IT FOR ME)** Sony/ATV Tree Publishing Company, BMI/Peanut Mill Songs, BMI/EMI Blackwood Music Inc., BMI/String Stretcher Music, BMI (L.Bryan, D.Davidson) **13****COUNTRY MUST BE COUNTRY WIDE** Square D Music, ASCAP/Average J2S Music Publishing, BMI/Warner-Tamerlane Publishing Corp., BMI/Indiana Angel Music, BMI (M.Deke, C.Ford, B.Gilbert) **31****CRAZY GIRL** Mike Curb Music, BMI/Sweet Hysteria Music, BMI/Sony/ATV Tree Publishing Company, BMI/Cake Taker, BMI/ole, BMI (L.Brice, L.Rose) **25**

D

DIDN'T I Ariose Music, ASCAP/EMI April Music, Inc., ASCAP/9T One Songs, ASCAP/Curb Songs, ASCAP/Jacobson, ASCAP/Sony/ATV Tree Publishing Company, BMI (B.Glover, K.Jacobs, R.Montana) **46****DIRT ROAD ANTHEM** Warner-Tamerlane Publishing Corp., BMI/Indiana Angel Music, BMI/Average Joes Entertainment Group, LLC, BMI/Average J2S Music Publishing, BMI (B.Gilbert, C.Ford) **11**

F

FERRIS WHEEL Curb Songs, ASCAP/Jacobson, ASCAP/Fortune Favors The Bold Music, ASCAP/Kohaw Music, ASCAP/Dudeskimusic, ASCAP/The Bicycle Music Company, ASCAP/Little Champion Music, LLC, ASCAP/Dream Rock Music, Inc., ASCAP (K.Jacobs, J.Kelley, R.Thibodeau) **59**

G

GENERATION LOVE Sony/ATV Tree Publishing Company, BMI/Tomdouglassmusic, BMI/EMI Blackwood Music Inc., BMI (T.Douglas, H.Morgan, R.Copperman) **44**

H

HEART LIKE MINE Sony/ATV Tree Publishing Company, BMI/Pink Dog Publishing, BMI/Watsky Music, ASCAP/Reynsong Publishing Corp., BMI (M.Lambert, T.Howard, A.Monroe) **7****HOMEBOY** Sony/ATV Tree Publishing Company, BMI/Sony/ATV Acuff Rose Music, BMI/Six Ring Circus Songs, BMI/Sinnerlina, BMI (E.Church, C.Beathard) **18****HONEY BEE** WB Music Corp., ASCAP/Melissa's Money Music Publishing, ASCAP/Get A Load Of This Music, ASCAP/EMI Blackwood Music Inc., BMI/Rhettneck Music, BMI (B.Hayslip, R.Akins) **5**

I

IF HEAVEN WASN'T SO FAR AWAY Big Borassa Music, LLC, BMI/Universal Music - Careers, BMI/Down The Hatch Music, BMI/Jonesbones Music, ASCAP (D.Davidson, R.Hatch, B.Jones) **8****I GOT NOTHIN'** Universal Music Corporation, ASCAP/Cadaja Publishing, ASCAP/MXC Music, ASCAP/Still Working For The Woman, ASCAP/EverGreen Copyrights, BMI (D.Rucker, C.Mills) **42****I GOT YOU** This Is Hit, Inc., ASCAP/Fibber & Molly Music, ASCAP/Big Loud Songs, ASCAP/Magic Mustang Music, BMI/Mack 2 Music, BMI/Big Loud Bucks, BMI/Sony/ATV Cross Keys Music Publishing, ASCAP/Sony/ATV Tree Publishing Company, BMI (S.Thompson, K.Thompson, J.Sellers, P.Jenkins) **34****I LOVE YOU THIS BIG** Einnor Music, ASCAP/WB Music Corp., ASCAP/Dat Damn Dean Music, BMI/Peermusic III, Ltd., BMI/2412 Songs LLC, BMI/Brett James Cornelius Music, ASCAP/Stage Three Songs, ASCAP (R.Jackson, E.Dean, B.James) **32****I'M DOING ALRIGHT** Tunes Of Bigger Picture, ASCAP/Bigger Picture Group, LLC, ASCAP/Scarlet Moon Music, Inc., BMI (J.Lyda, P.Overstreet) **60****I WON'T LET GO** Stage Three Songs, ASCAP/Stage Three Music Ltd., PRS/Sony/ATV Cross Keys Music Publishing, ASCAP/Becky's Boy Music, ASCAP (S.Robson, J.Sellers) **3****I WOULDN'T BE A MAN** Universal-PolyGram International Publishing, ASCAP/Songs De Burgo, ASCAP/Universal Music - MGB Songs, ASCAP (R.M.Bourke, M.B.Reid) **22**

J

JUST A KISS Warner-Tamerlane Publishing Corp., BMI/DWHaywood Music, BMI/RADIOBULLETPublishing, BMI/EMI Foray Music, SESAC/Hillary Dawn Songs, SESAC/EMI Blackwood Music Inc., BMI/String Stretcher Music, BMI (D.Haywood, C.Kelley, H.Scott, D.Davidson) **15****JUST FISHIN'** Sony/ATV Acuff Rose Music, BMI/Six Ring Circus Songs, BMI/Sony/ATV Tree Publishing Company, BMI/Five Hills Music, BMI/Do Write Music, LLC, ASCAP (C.Beathard, M.Criswell, E.M.Hill) **20**

K

KNEE DEEP Weimerhound Music, BMI/Lil' Dub Music, BMI/Angelika Music, BMI/Poppolotamus Music, BMI/Jeffrey Steele Music, BMI/BPJ Administration, ASCAP (Z.Brown, W.Durette, C.Bowles, J.Steele) **16**

L

LAST NIGHT AGAIN Universal Music Corporation, ASCAP/Kind Vibe, ASCAP/Meghan Linsey Music, BMI/Steel Mag Music, BMI/EMI Blackwood Music Inc., BMI/Raylene Music, ASCAP (J.S.Jones, M.Linsey, H.Lindsey) **24****LET IT RAIN** Scrambler Music, ASCAP/Carnival Music Group, ASCAP/BMG Gold Songs, ASCAP/Glassbean, ASCAP/We Jam Writers Group, ASCAP (D.Nail, J.Singleton) **36****LET'S GET TOGETHER** Phylvester Music, Inc., ASCAP/Tmullins Music, ASCAP (P.Vassar, T.Mullins) **56****LIKE MY MOTHER DOES** Sony/ATV Tree Publishing Company, BMI/Cake Taker, BMI/ole, BMI/Pain In The Art Publishing, BMI/Perfect Mess Music, BMI (N.Chapman, L.Rose, N.Williams) **49****LOOK IT UP** Ten Ten Music Group, ASCAP/Orrall Fixation Music, ASCAP (A.Presley, R.E.Orrall) **19****LOVE DONE GONE** International Dog Music, BMI/Big Yellow Dog, LLC, BMI/Scamporee Music, BMI/Warner-Tamerlane Publishing Corp., BMI (S.Camp, M.Green) **27****LOVE DON'T RUN** Mike Curb Music, BMI/Ghermkyle Music, BMI/9T One Songs, ASCAP/Ariose Music, ASCAP/Little Champion Music, LLC, ASCAP/Dream Rock Music, Inc., ASCAP (J.Leathers, B.Glover, R.Thibodeau) **29**

M

MARY WAS THE MARRYING KIND Music Of Stage Three, BMI/Songs Of Corman, BMI/Songs From The Couch, BMI/Sony/ATV Cross Keys Music Publishing, ASCAP (K.Moore, S.Stepakoff, D.Couch) **51****MEAN** Sony/ATV Tree Publishing Company, BMI/Taylor Swift Music, BMI (T.Swift) **4****MR. BARTENDER** Songs of Program 360, ASCAP/Do Write Music, LLC, ASCAP (B.Gaskin) **37**

O

OH, TONIGHT Pretty Damn Tough, ASCAP/RandDazz, ASCAP (J.Abbott, S.Helms) **50****OLD ALABAMA** House Of Sea Gayle Music, ASCAP/Words & Music, ASCAP/Circle C Songs, ASCAP/V Bulls Music, ASCAP/Full Circle Music Publishing, LLC, ASCAP/Sony/ATV Tree Publishing Company, BMI (B.Paisley, C.DuBois, T.Turnbull, R.Owen) **1****ONE MORE DRINKIN' SONG** New Songs Of Sea Gayle, BMI/Ozworth Music, BMI (J.L.Nieman, R.Brown) **58**

R

THE REASON WHY Warner-Tamerlane Publishing Corp., BMI/Tower One Music, BMI/Mad Mother Music, BMI/Manatt Phelps & Phillips, BMI (K.Fairchild, W.Kirkpatrick, K.Schlapman, P.Sweet, J.Westbrook) **45****REMINDE ME** House Of Sea Gayle Music, ASCAP/EMI April Music, Inc., ASCAP/Didn't Have To Be Music, ASCAP (B.Paisley, C.DuBois, K.Lovelace) **30**

S

SHOTGUN GIRL Sony/ATV Cross Keys Music Publishing, ASCAP/Danelle Leverett Publishing Company, ASCAP (D.Leverett, D.Ruttan) **41****SOMEWHERE ELSE** Tokeco Tunes, BMI/Music Of Stage Three, BMI/Bobby's Song And Salvage, BMI/Stage Three Music Inc., BMI (T.Keith, B.Pinson) **12****STAYING'S WORSE THAN LEAVING WB** Music Corp., ASCAP/Mountain Morning Music, ASCAP/House Of Sea Gayle Music, ASCAP/Little Mojo Music, ASCAP/Big Machine Music, BMI/Three Minute Movie Music, BMI/Super 98 Music, LLC, BMI (J.Clementi, R.Foster, S.Sweeney) **48****STAY UP LATE** Black To Black Songs, BMI/ole, BMI/Nashvillatone Songs, BMI/Sonya Isaacs Music, BMI/WB Music Corp., ASCAP/Melissa's Money Music Publishing, ASCAP/Get A Load Of This Music, ASCAP (J.Yeary, S.Isaacs, B.Hayslip) **55****STORM WARNING** Songs Of Universal, Inc., BMI/Happy Little Man Publishing, BMI/Dash8 Music, ASCAP/Bughouse, ASCAP/Bug Music, ASCAP/BMG Platinum Songs, BMI/Hello I Love You Music, BMI (H.Hayes, G.Sampson, busby) **47**

T

TAKE A BACK ROAD EMI Blackwood Music Inc., BMI/Rhettneck Music, BMI/Universal Music - Careers, BMI/High Powered Machine Music, BMI (R.Akins, L.Laird) **28****TAKE IT OFF** EMI Blackwood Music Inc., BMI/String Stretcher Music, BMI/Songs Of Southside Independent Music Publishing, L/External Combustion Music, ASCAP/Out Of The Taperoom, ASCAP/EMI April Music, Inc., ASCAP/Didn't Have To Be Music, ASCAP (D.Davidson, A.Gorley, K.Lovelace) **52****TEENAGE DAUGHTERS** StyleSonic Music, BMI/EMI Blackwood Music Inc., BMI/Delemmava Music Publishing, BMI (M.McBride, B.Warren, B.Warren) **17****TOMORROW** Runnin' Behind Publishing, ASCAP/EMI April Music, Inc., ASCAP/Sixteen Stars Music, BMI/Frank Myers Music, BMI/Grand Poobah Publishing, SESAC/Dreams To Music, SESAC (C.Young, F.J.Myers, A.Smith) **9****TONIGHT** Jennifer Nettles Publishing, ASCAP/Dirkpit Music, BMI/Control Group Music, Inc., BMI (J.O.Nettles, K.Bush, K.Griffin) **35****TWENTY-ONE** Shooting Moon Music, ASCAP (C.Smith) **57**

W

WANNA TAKE YOU HOME Gossin Publishing, ASCAP/Melusic, Inc., ASCAP/Primary Wave Emblem, ASCAP/Warner-Tamerlane Publishing Corp., BMI/Boatwright Baby, BMI (T.Gossin, M.Serletic, W.Nobley) **39****WHEN LOVE GETS A HOLD OF YOU** Vivastille Music, ASCAP/Hopeless Rose Music, ASCAP/Sony/ATV Cross Keys Music Publishing, ASCAP/Gary Nicholson Music, ASCAP/Reynsong Publishing Corp., BMI/Wha Ya Say Music, BMI (J.Alexander, G.Nicholson, J.R.Stewart) **43****WITHOUT YOU** Totally Wrighteous Music, BMI/Big Loud Bucks, BMI/Sony/ATV Tree Publishing Company, BMI/Songs For My Good Girl Music, BMI (D.Pahanish, J.West) **2****WON'T BE LONELY LONG** Sony/ATV Tree Publishing Company, BMI/Songs Of Better Angels Music, BMI/Blank Sheet Music, BMI/Warner-Tamerlane Publishing Corp., BMI/Salt Life Songs, BMI/Big Hits Of Amylase, BMI/Pure Blue, BMI (J.Thompson, A.Aibrton, G.Ducas) **26**

Y

YOU AND TEQUILA Songs Of Universal, Inc., BMI/Hannaberg Music, BMI/WB Music Corp., ASCAP/Deanaling Music, ASCAP (M.Berg, D.Carter) **21****YOU LIE** EMI Blackwood Music Inc., BMI/How Bout That Skyline Music, BMI/Cactus Moser Music, BMI (B.Henningsen, C.Henningsen, A.Henningsen) **6**