

Phase X: Maintaining Our Investment

Maintenance and repairs for your schools - **\$0 School Tax Increase**

COME OUT TO VOTE!

October 16, 2012

6:00 AM - 9:00 PM

Gates Chili High School

On Tuesday, October 16, 2012, the Gates Chili Central School District will ask voters to come out for a special vote on the **Phase X Capital Project - Maintaining Our Investment**. The Phase X project will cover structural improvements, energy conservation at all of our school buildings, roof repair and replacement at some of the schools, as well as improvements to the lighting structure for the High School stadium field.

The cost for Phase X is \$10,800,000; however, there will be **no local school tax increase**. The District will use the remaining \$247,000 from capital reserve and \$225,000 of the local share debt service savings that is accumulated from paying off debt from previous capital projects. *New York State requires school districts to present capital projects to the community for a vote even when there is no tax rate increase.*

While the District facilities are in overall good condition and reflect a significant commitment to a dedicated and proficiently managed maintenance program, planning for facility improvements and programmatic needs are ongoing to ensure that we maintain care of the community's investment in our schools.

The goal of Phase X is to support that effort with no tax increase for our tax payers.



Brick deterioration/mortar joint repair, brick pointing [Structural]



Urethane coating roof deterioration [Roof Repair]



Window header frame deterioration [Energy Consumption]

Dear Gates Chili Community Members,

As Superintendent of the Gates Chili Central School District, I am pleased to share this Phase X Capital Project information with you. This Project is a direct result of our District's five-year Strategic Plan Goal known as "Building our Future". The work undertaken represents our commitment to be good stewards of our District resources and to protect our community's investment for the future. These repairs will provide important structural improvements, roof replacement, energy conversation and building upgrades to ensure that our school facilities continue to function well in years ahead.

The development of this Phase X Capital Project to "Maintain Our Investment" was accomplished by our Capital Asset Taskforce that met last year and reviewed our five-year Building Conditions Survey. The Taskforce prioritized our facility's needs and examined the financial resources available including use of a capital reserve and local share debt funds which became available as we have paid off debts from previous capital projects.

This Phase X Capital Project is presented to you with no local school tax increase. The Board of Education and I believe that this Capital Project supports our Strategic Plan, provides a wise use of our District resources and is cost effective. This investment will allow us to continue to provide the highest quality education possible in our "well maintained" schools, as we fulfill our mission statement "*Together we teach and inspire excellence for all learners*" in the years ahead.

Sincerely,
Mark C. Davey, Ed.D.
Superintendent of Schools

Sample Photos of Pending Repairs

Below are photos to represent the type of repairs that will be made as part of the Phase X Capital Project. All repairs are not represented.



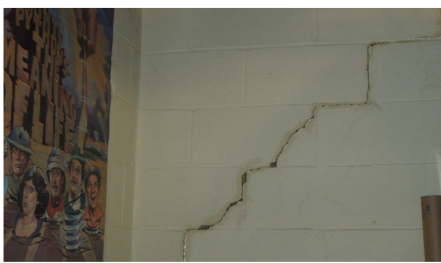
Florence Brassler School Stairway replacement [Structural]



Florence Brassler Roof [Roofing]



Neil Armstrong Door Threshold [Energy Conservation]



Middle School Interior Wall [Structural]



High School Exterior Wall [Roofing]



Walt Disney Door Panel [Energy Conservation]

Phase X: Questions & Answers

How did you decide what to repair/replace?

The replacement and repair items proposed were determined by using the New York State Education Building Conditions Survey (BCS). New York State Education Department requires every school district to complete a BCS every five years. Together with the annual visual building inspections and other monitoring requirements, the District is provided information necessary to properly maintain a safe and healthy school environment to preserve its capital assets.

When will the work begin?

If approved, Phase X will begin the summer of 2013. The bulk of the work will take place during the summer months with its final completion expected a year later. The extended time is to avoid disruption to the instructional program during the school year.

What and where are the major repairs?

The bulk of the work is roof replacement. The entire Paul Road roof and sections of the High School, Middle School and Florence Brassier roofs will be replaced. The cost to replace these roofs is estimated to be \$9,576,608.

Why replace stadium field lights?

In spring of 2012, the visible deterioration was noted on two poles. An expert consultant was brought in to investigate and determined that two of the poles were unsafe. Those two poles were taken down and replaced; however, it was recommended that the District replace the remaining 37 year old poles. Through the Phase X project, the light poles as well as the lights will be replaced. This will substantially improve the visibility on the stadium field. Additionally, the District will reduce its energy consumption because the new light fixtures will not consume as much energy.

Will New York State provide building aid?

New York State will provide 82.7% building aid for the project. The District will receive the aid over a 20 year period.

Where and how much?

| Florence Brassier Elementary School | |
|---------------------------------------|---------------------|
| Structural integrity | \$61,105 |
| Energy conservation | \$49,853 |
| Roof repair and replacement | \$416,921 |
| Total | \$527,879 |
| Gates Chili High School | |
| Structural integrity | \$201,843 |
| Energy conservation | \$91,884 |
| Roof repair and replacement | \$3,655,089 |
| Total | \$3,948,816 |
| Stadium Field | |
| Structural integrity-Stadium lighting | \$438,625 |
| Total | \$438,625 |
| Gates Chili Middle School | |
| Structural integrity | \$60,651 |
| Energy conservation | \$84,700 |
| Roof repair and replacement | \$3,288,882 |
| Total | \$3,434,233 |
| Neil Armstrong Elementary School | |
| Structural integrity | \$52,517 |
| Energy conservation | \$8,200 |
| Total | \$60,717 |
| Paul Road Elementary School | |
| Structural integrity | \$41,367 |
| Roof repair and replacement | \$2,215,716 |
| Total | \$2,257,083 |
| Walt Disney Elementary School | |
| Structural integrity | \$132,647 |
| Total | \$132,647 |
| Phase X Capital Project cost | \$10,800,000 |

Other project expenses include funds to cover asbestos removal/containment as needed; fees for required legal notices, engineering and architectural services and drawings; project management, and other project costs.

Come out to Vote: October 16, 2012



Gates Chili Central School District
 3 Spartan Way
 Rochester, NY 14624
 585.247.5050

Non-Profit Org.
 U.S. Postage
PAID
 Rochester, NY
 Permit No. 1034

Board of Education

Lowell Benjamin, *President*
 Rhonda Laskoski, *Vice President*
 Debra Bennett
 Barbara Huether Clark
 James Crider
 Kelly Glover
 Carl Inzinca
 Mary Frances Johnson
 David Lane

Superintendent of Schools

Dr. Mark C. Davey

Newsletter Design & Editing

Cheryl Holland

Voter Eligibility

Anyone who is at least 18 years old, a U.S. Citizen, and a resident of the Gates Chili Central School District for at least 30 days prior to the October 16, 2012 vote is eligible. You do not need to be registered to vote, but you must bring identification.

Absentee Ballots

Absentee ballots are available to residents who will be out of town or unable to vote in person due to illness or disability. To receive a ballot you must first submit an absentee ballot application. For an application, contact the District Clerk's office by calling 585.247.5050 extension 1570. Completed absentee ballots must be received no later than 5:00 PM on Tuesday, October 16, 2012.

Q & A continued from Page 3

What is the financial impact of the project on taxpayers?

There will be no financial impact to taxpayers. The District will use the remaining \$247,000 from the capital reserve and \$225,000 from local share debt service savings due to the drop off in annual debt service from existing projects.

How can we complete this project with no tax increase?

The District has a number of outstanding debts associated with capital projects. These projects are similar to having a mortgage or other debt. When you pay off the mortgage on your house, you have extra money to spend. The District has paid off some of its capital projects and will be using those funds to pay for the Phase X project to maintain the investment in our school buildings.

What is capital reserve?

A capital reserve fund is a financial planning tool that functions as a 'savings account' for a school district to set aside revenue annually and reduce or eliminate the need for a tax increase to fund renovations. Districts also earn additional revenue through interest earned on the capital reserve fund.

What is local debt service?

When the District proposes capital projects to the community, the community normally contributes something for that capital project. The most recent example of a local share contribution to a capital project is Phase IX. Phase IX cost the taxpayers approximately \$.54/\$1,000 assessed value per household.

| | |
|--|---|
| <p>VOTING HOURS 6:00 AM - 9:00 PM</p> | <p>YOUR VOTE COUNTS! October 16, 2012 Gates Chili High School 1 Spartan Way</p> |
|--|---|