

Ioan Florea
florea@floreaart.com

statement + images

During my childhood in the communist regime back in Transylvania, I spent most of the time exploring the surrounding forest and the hills full of earth pigments, clay and kaolin. The communist government had control over everything from what you think to what you eat. Was illegal to slaughter your own animals for consumption-but people did it anyway hiding the animal bones in the forest. That is how I start finding animal bones in nearby forest . I was very intrigued by the interesting shapes of the vertebrae and I started to collect turning them in toys,carve and draw on their surface. Also my grandmother use to save the bones and make soap for washing laundry and I was very fascinated by the alchemical process of transforming the messy leftovers in something pure. Also latter on trying to get more animal bones for my art I got them from butcher ,made soup and other meals and serve to people around my studio in Bucharest ,Romania.

My neighbors dig clay form their back yard shape it in brick forms,fire them and build big houses under my eyes.

I became fascinated by bones and by the plasticity of clay, the transformation from mud to brick and the colors of the earth pigments. I start modeling shapes inspired by bones and make pigments and paints from earth

I continued to collect animal bones during my graduate studies from Dakota plains to the banks of Missouri River and also making my own paints

In my paintings I integrate and explore different new pigments and lightweight materials and I get inspired from the world of nanotechnology. I developed my own custom 3D image fused resin and pigment transfer of my shapes on canvas and I also use liquid metal paint that I formulate. My paintings have double function addressing both the visual and tactile senses

My recent work is also influenced by my personal experience through the lengthy legal immigration process -and addresses the globalization and human migration in search for utopian spaces and the consequences that come with. I also explore the concept of legal illegal status

From primitive society to contemporary world human migrate in search of food or better lives
The primitive hunting societies follow the animal great distances. The contemporary man follows jobs and better opportunities searching for utopic places in developed countries.



Nanoshapes - 3-D paintings- March -2013 studio scale detail image - medium pigment resin fused on canvas 120" X 96" X 6"



Nanoshapes - 3-D paintings- March -2013 studio scale detail image - medium pigment resin fused on canvas 120" X 96" X 6"



Axis mundi -site specific installation W.H Over State Museum South Dakota - 35 panels with buffalo bones





Axis mundi -site specific installation W.H Over State Museum South Dakota - 35 panels with buffalo bones





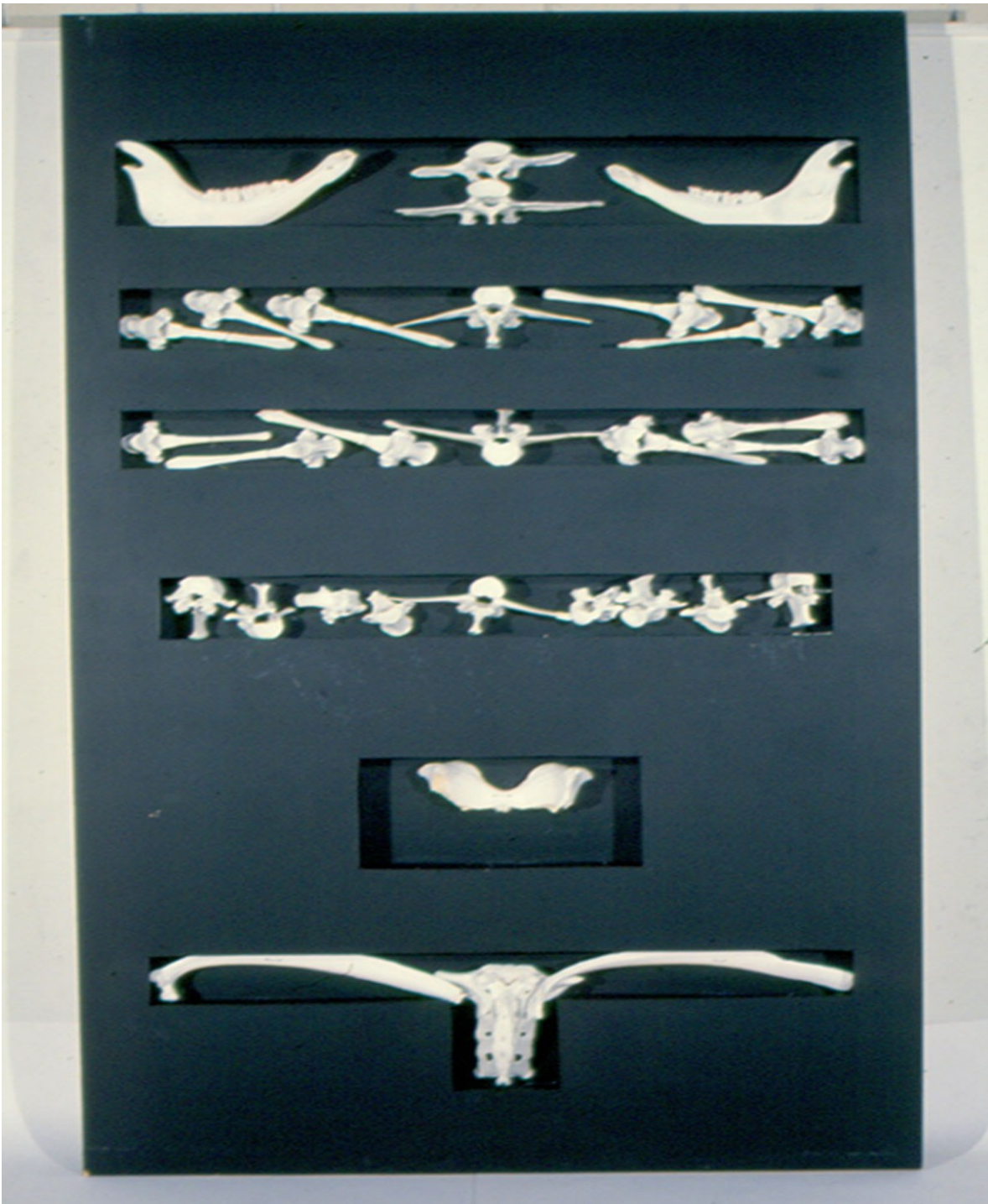
Osuaria- site specific installation 1000 x ray + painted animal bones Atelier 35 Bucharest Romania



Imago Mundi- Bede Art Gallery, Mount Marty College. Yankton, South Dakota



Bones -buffalo bones on panel - 240 cm X 240 cm X 12 cm



Bones 2 -buffalo bones on modular panel - 240 cm X 120 cm X 12 cm



Quest for Earthly Paradise-medium-pigment resin 3D shapes fused on canvas 203 cm X 140cm X 12 cm



The Promise Land-2012 -medium-pigment resin 3D shapes fused on canvas 203 cm X 152cm X12cm

