

SHELTERS AT HADALAT BORDER CROSSING, JORDAN-SYRIA BORDER

Analysis with WorldView-3 Data Acquired 30 August 2015, WorldView-2 Data Acquired 2 December 2014, WorldView-1 Data Acquired 8 November 2010 and 21 April 2015 and Deimos-2 Data Acquired 29 January and 29 April 2016

This map illustrates shelters in the area of the Hadalat crossing on the Syrian-Jordanian border. Using a satellite image collected by the Deimos-2 satellite on 29 April 2016, UNOSAT located 1,869 probable shelters within the 76.5 ha of the camp. This is a 587% increase in shelters since the previous UNOSAT analysis done using an image collected 29 January 2016. Due to the small size and the irregularity of the shelters it is likely that some shelters

may have been missed in this analysis, or some shelters were included erroneously. Due to the scale of this map and the lack of suitable border information at this scale, the border in this map has been excluded. This map is intended for field support and local authorities should be consulted for boundary information. This is a preliminary analysis and has not yet been validated in the field. Please send ground feedback to UNITAR-UNOSAT.

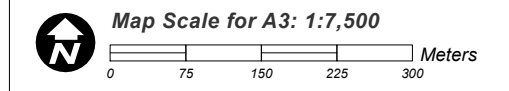
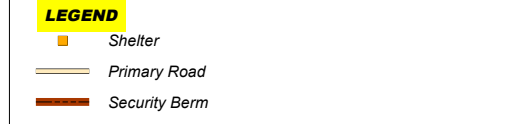
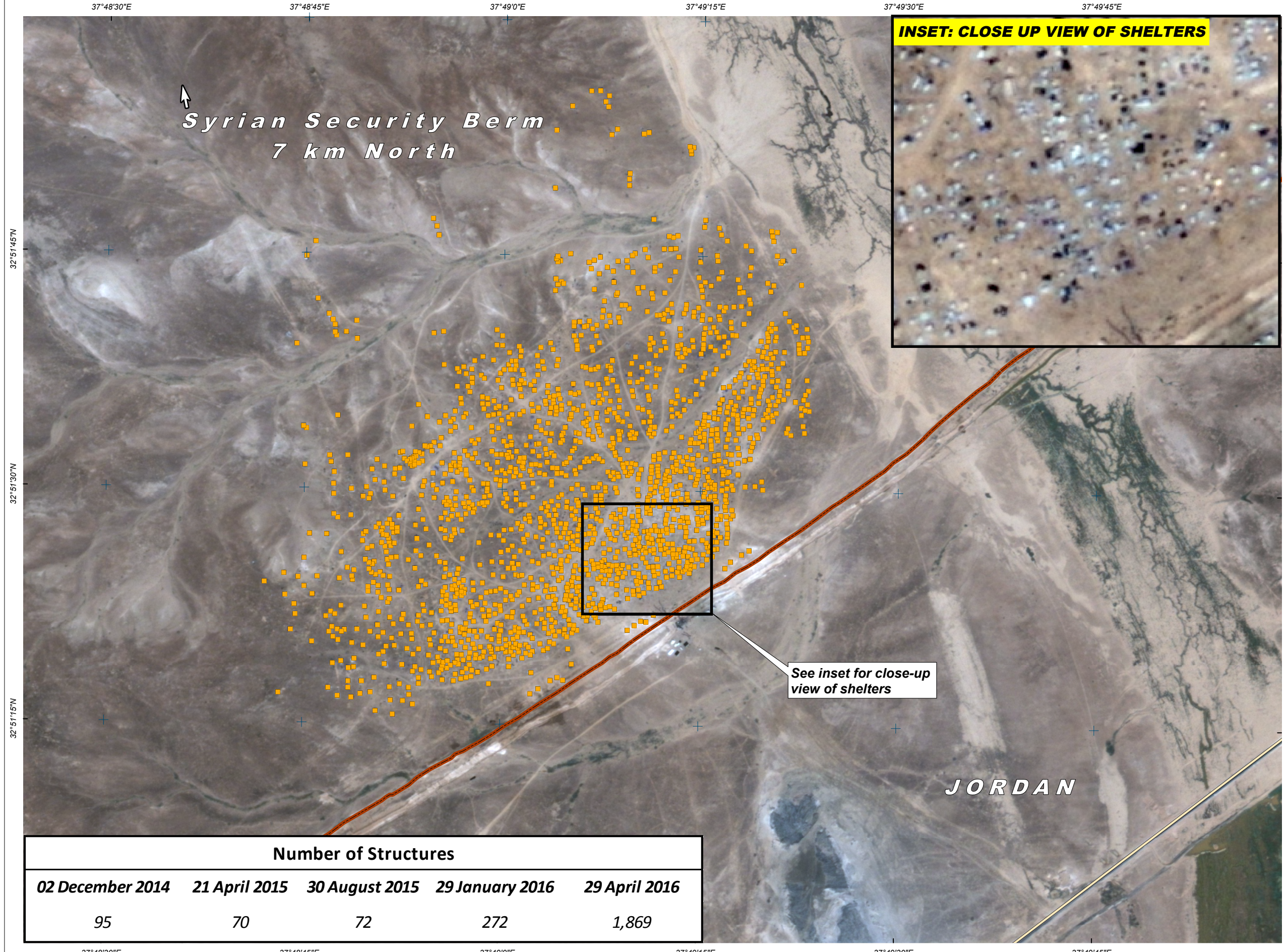
Complex Emergency



Production Date: 5/9/2016

Draft

Activation Number: CE20130604SYR



Satellite Data (1): WorldView-3
Imagery Dates: 30 August 2015
Resolution: 40 cm
Copyright: DigitalGlobe
Source: US Department of State, Humanitarian Information Unit, NextView License

Satellite Data (2): WorldView-1
Imagery Dates: 8 November 2010, 21 April 2015
Resolution: 50 cm
Copyright: DigitalGlobe
Source: US Department of State, Humanitarian Information Unit, NextView License

Satellite Data (3): WorldView-2
Imagery Dates: 2 December 2014
Resolution: 50 cm
Copyright: DigitalGlobe
Source: US Department of State, Humanitarian Information Unit, NextView License

Satellite Data (4): Deimos-2
Imagery Date: 29 January and 29 April 2016
Resolution: 75 cm
Copyright: Deimos Imaging, an UrtheCast Compagny 2016
Source: Deimos Imaging, an UrtheCast Compagny 2016

Road and Berm Data: UNITAR - UNOSAT
Other Data: USGS, UNCS, NASA, NGA
Analysis: UNITAR - UNOSAT
Production: UNITAR - UNOSAT
Analysis conducted with ArcGIS v10.3

Coordinate System: WGS 1984 UTM Zone 37N
Projection: Transverse Mercator
Datum: WGS 1984
Units: Meter

The depiction and use of boundaries, geographic names and related data shown here are not warranted to be error-free nor do they imply official endorsement or acceptance by the United Nations. UNOSAT is a program of the United Nations Institute for Training and Research (UNITAR), providing satellite imagery and related geographic information, research and analysis to UN humanitarian and development agencies and their implementing partners.

This work by UNITAR/UNOSAT is licensed under a Creative Commons Attribution-NonCommercial-ShareAlike 3.0 Unported License.



Contact Information: unosat@unitar.org
24/7 Hotline: +41 75 411 4998
www.unitar.org/unosat

Number of Structures				
02 December 2014	21 April 2015	30 August 2015	29 January 2016	29 April 2016
95	70	72	272	1,869