

**FREE**

Country Music

# Highway

2017 **Travel Guide**

[WWW.COUNTRYMUSICHIGHWAY.COM](http://WWW.COUNTRYMUSICHIGHWAY.COM)



# CHRIS STAPLETON

*YET ANOTHER US23 COUNTRY MUSIC  
HIGHWAY LEGEND IN THE MAKING*

CELEBRATING OUR  
US23 LEGENDS





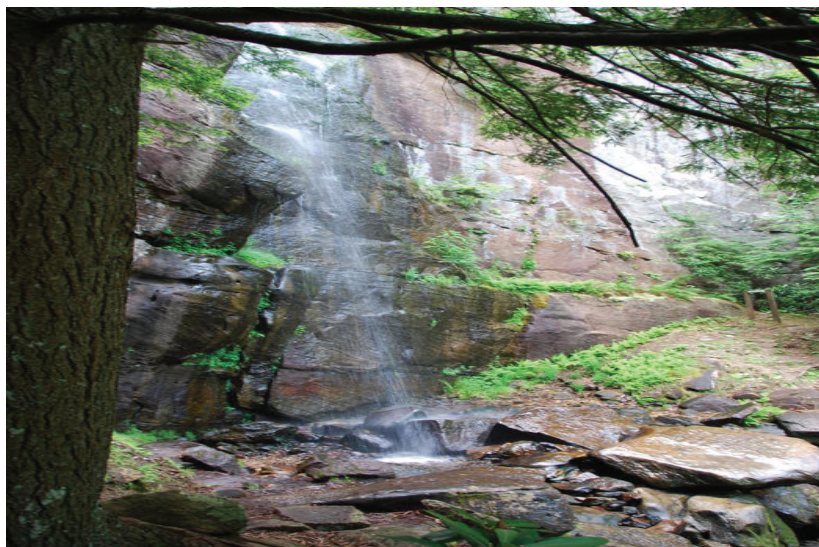
# TABLE OF CONTENTS

Published  
annually by

J. L. C. Media  
609 Washington Ave.  
Paintsville, Ky 41240

[www.countrymusichighway.com](http://www.countrymusichighway.com)

606-793-7493



Lawrence County Tourism pages 3-5  
Rising Lawrence Co. Stars pages 6-8  
Discover Agri-Tourism page 9

***Speaking of and about  
the tourism industry along  
the Country Music Highway  
and the adjacent region of  
Eastern Kentucky.***

Josh Osborne Scores Big As A Songwriter page 10  
Pike County Tourism pages 11-13  
Knott Co. Tourism pages 14-15

Loretta Lynn Earns Another Grammy page 16  
Samuel May House Rich In History page 17

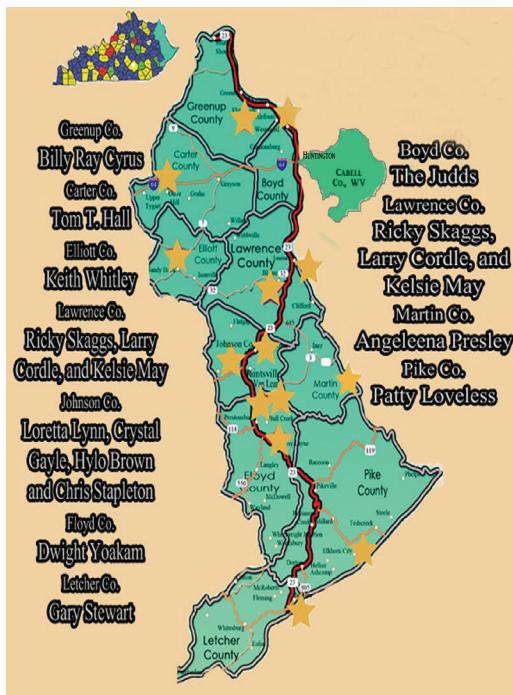
Great Stopovers in Paintsville, Van Lear,  
Prestonsburg, and Pikeville pages 18-19

Sturgill Simpson from East Ky. page 20  
New Festival To Enjoy and Ashland  
area attractions page 21

Tour Huntington, WV's Blenko Glass page 23  
Ashland Tourism pages 24-25

Highlands Museum and State Parks pages 26-27  
Whitesburg Hotel Project Underway page 28  
Ky, Filmmakers Actively Recruited page 29

Marlana VanHoose Very Active page 30  
Crystal Gayle Inducted In Grand Ole Opry pg. 31





# **Louisa and Lawrence County Invite You To Come Stay A While!**



**Riverside Raceway**



**All Campers Welcome!**



**Unique Locks On Big Sandy River**



**Don't Miss Our Septemberfest!**

## **There's Only One Lawrence County and Louisa**

Here In Lawrence County, the area's bluegrass and country roots has produced superstars like Ricky Skaggs, and songwriter and Bluegrass star Larry Cordle. Tyler Childers and Kelsie May are attracting the attention of the music industry. Bobby Cyrus is a another popular singer and entertainer that started out here.

Louisa is one of the oldest cities in Eastern Kentucky, with a bountiful history as a link between the Ohio River Valley and the Appalachian Mountains. It was a key Civil War fortress for the Union Army, and sits at the junction of two rivers, the Tug Fork and Levisa Fork flowing from their respective watersheds to the south. In Louisa, the two rivers merge into the Big Sandy, that flows northward to the Ohio River in Catlettsburg.

Louisa is the only town where you can drive to the middle of the bridge spanning the two rivers, then turn right onto dry land! Or, you can continue across both rivers into West Virginia. This is why the Louisa-Ft. Gay Bridge is in the Guinness Book of World Records. Any Lawrence County visitor will enjoy the Fred M. Vinson Museum in Louisa. This former Supreme Court Chief Justice grew up in Louisa and was the son of the county's jailer. He later opened a local law practice . He went on to serve in Congress and was a key advisor to two Presidents, Franklin D. Roosevelt and Harry Truman.

This year a new festival began in late March, the making of maple syrup at Savage Farms. Savage Farms, the largest syrup producer in Ky., displayed their products to hundreds on Route 3 north of Fallsburg.

There's opportunities for biking, golfing, swimming, horseback riding, hiking, fishing, and an old fashioned county fair. You're sure to have fun here with us!





# Louisa and Lawrence County..... a

## Country Music

Be our guest and you'll e



## EVENTS

Summer gets even hotter in June with the **Youth Fest Bluegrass Festival**

### 4TH OF JULY CELEBRATION

Parade, live music, fireworks

### OLD FASHIONED COUNTY FAIR

Summer Event

### SEPTEMBERFEST – 2nd Weekend In September

“Biggest Little Festival in KY!”

**BLAINE AUTUMN FEST** Great October Country Festival

### APPALACHIAN BIKE TOUR – September

Bicycle through the bluegrass

### NIGHTMARE IN THE SQUARE

“Family Friendly” Halloween event

**HERITAGE HARVEST TOUR**– Self Guided Driving Tour Thru Lawrence County - Last weekend in Sept.

### MAPLE FESTIVAL – MARCH

Largest commercial maple syrup producer in Ky. SAVAGE FARMS

**FARM & FIELD DAY** June 23 at Lawrence County Extension Office

**Painted Cow Art Gallery** 606-638-1313

**Camp Caleb-** Acres of fun! 606-265-4151

**Three Rivers Boat Launch and Riverfront Mural-**Put your boat in and see our beautiful outdoor mural that shows the story of the 3 rivers which come together in historic downtown Louisa

**Yatesville Lake State Park** Bass Capital of Eastern

**Savage Farms** 606-686-1120

**Eagle Ridge Golf Course** Top 10 Kentucky Golf Course “Challenge Yourself!” 606-673-4300

**The Falls Campground** “Mesmerizing” 606-826-0212

**Ky. Pavilion at Falls Creek** Country Music Hwy. Welcome Center See authentic memorabilia of country music stars

**Fallsburg Haunted House & Fearplex** 606-686-3030

**Louisa-Ft. Gay Bridge** “Go to the middle of our bridge and turn right!”

**Fred M. Vinson Museum** 13th Chief Justice of The U. S. Supreme Court 606-638-0078

**Historic River Locks** First needle dam built in U.S.

**4 Got-n-Tymes FARM**

## attractions





# .. a Friendly Progressive Area of Our Music Highway

1 enjoy a bunch of fun!



## Restaurants

**SOUTHERN SPOON**  
KY BBQ & More  
Banana pudding rivals  
Paula Deen's!  
606-826-7427

**STARS & STRIPES**  
Fun atmosphere, great  
food, live entertainment,  
karaoke, good place to  
watch the game  
606-638-5000

**KY FRIED CHICKEN**  
Great Buffet  
606-638-9636

**PAPA JOHNS**  
606-638-7272

**Dee's Drive Inn**  
(A Louisa Landmark  
since 1954)  
606-638-4646

**Old China Buffet**  
638-0998

**Down Home Grill**  
638-0025

**Giovannis**  
638-9053

**Fallsburg Country Store  
& Restaurant**  
606-686-3131

**Kimber's  
Country Market**  
Blaine  
606-652-4352

**Clifford Country Store &  
Deli**  
S. Highway 3  
606-673-4167

**Toro Loco**  
638-0119

## Lodging

**Super 8 Motel**  
191 Falls Creek  
Louisa, KY 41230  
606-638-7888

**Best Western Plus**  
18199 US 23  
Louisa, KY  
606-638-3420

**Yatesville Lake State  
Park Campground**  
2067 Pleasant Ridge Rd  
Louisa, KY. 41230

**Falls Campground**  
US Highway 3  
Fallsburg, KY 41230  
606-686-3398

**Budget Inn  
Express Motel**  
117 East Madison St.  
Louisa, KY 41230  
606-638-0229

**Lawrence County Park  
and  
Campground**  
Cabins, RV, and  
Tent Sites





## Locals With Huge Success Recognized

Ricky Skaggs has won 12 Grammys, produced 12 Number One hits, won eight CMA awards, and eight ACM awards. He was made a Grand Ole Opry member in 1982.

In his teens, he and Keith Whitley formed a band. Later they were part of Ralph Stanley's band, the Clinch Mountain Boys.

After huge country success, Skaggs returned to his Bluegrass roots, performing with his band Kentucky Thunder and producing nearly a dozen award winning albums under his own Skaggs Family Records label.



Larry Cordle is a popular bluegrass performer along with his band, Lonesome Standard Time. This Lawrence County native enjoyed a Grammy Nomination for his band's debut album.

He is a songwriter best known for "Murder On Music Row". He also has written songs for Ricky Skaggs, Garth Brooks, George Strait, Alan Jackson, Loretta Lynn, Trisha Yearwood, Kathy Mattea, and others.



## Childers Catching National Exposure

Tyler Childers was born in Lawrence County. Critics compare him to Chris Stapleton, Sturgill Simpson and Chris Knight.

Many feel he is part of a new wave of Eastern Kentucky natives coming on the scene reminiscent of the 1980's emergence of Keith Whitley and Ricky Skaggs.

A songwriter sees and analyzes life through the "writer's eye". Childers has a treasure trove of memories and observations from which he has penned his songs. From a local barber shop accompanying his Papaw, to coon hunting trips he took with his Dad he collected much of what older men and relatives said about

a number of life's adventures, and predicaments.

Playing in bars before he was old enough to drink enriched his perspective.

This Spring, Childers released the album "Coming Down The Mountain". A tour has been announced to support this latest effort.

This former delivery guy at the Sears store in Paintsville says his material is not based on personal experience, but from giving attention to how life works for people.

Although Childers is a native to Lawrence County, he went to Paintsville High School.

About the time Childers moved to Paintsville he developed a group of buddies

who introduced him to music he hadn't heard but really liked and was deeply influenced by. This type of music became all he listened to. Prime examples were Drive-By Truckers, Chris Knight and Lucero.

His first album *Bottles And Bibles* produced hit songs "Play Me A Hank Song" and "If Whiskey Could Talk". The popular "Follow You To Virgie" came from his next effort, *Live On Red Barn Radio II*.

Around 2016, he left Kentucky because his wife obtained a job in the Greenbrier area of West Virginia.

In October 2016, he performed solo in Charleston on the popular TV show, *Mountain Stage*.



## Zach Wright Is Making His Mark In Bluegrass Music

Zach Wright started playing the banjo when he was just nine years old. At ten, he was singing and able to keep up with older, more experienced and seasoned musicians.

As he was growing up in Lawrence County, he often joined in with neighbors and playing music. Early on, Zach was exposed to bluegrass more than any other music and quickly fell in love with it.

His mother, Michelle Wright, found a unique way to make her youngster stop crying. She would play a Ralph Stanley CD.

Wright got his new CD "Colonel Zachary Wright" on the market early this year.

His key influences are John Rigsby, Larry Sparks, Melvin Goins, Ralph Stanley, Jr., Danny Davis, and Sammy Adkins.

At 15 years old, Zachary is an accomplished banjo player who has adapted the old time mountain style of Ralph Stanley.

Zach thanks his Lord and Savior Jesus Christ for his talent and opportunities. Thanks go to family and all of the musicians that have helped show the way. His fans have been a constant encouragement. He knows he has already accomplished a lot.

On Zach's first album, many Bluegrass classics are performed. He and his recording band members, Sammy Adkins, Danny Davis, and John Rigsby of the Clinch Mountain boys, take you back to a 1970s festival. They found the essence of Stanley music.

Little sister Savanna handles the bass duties on the project, performing alongside her brother. Her vocal delivery has been critically acclaimed and described as "remarkable for such a young lady". She is three years younger.

Music is just one goal. He hopes to enter college, enroll in the police academy.

Traditional bluegrass music is alive and thriving.



## Adam Chaffins Enjoying A Lively Musical Career

Adam Chaffins has a solid connection to Lawrence County, although these days he lives and works in Nashville.

He is the son of a coal miner and social worker.

He has picked up important experience on the road. In 2013 Chaffins first toured for two years the Boston-based progressive acoustic group The Deadly Gentlemen. He later was a part of the renowned Asheville-based bluegrass band Town Mountain.

Along the way, he has been on stage at the Grand Old Opry and historic Ryman Auditorium, Music City Roots PBS series, and such festivals as Breeders Cup, Merlefest, Old Settler's Music Festival, Teluride Bluegrass Festival, Grey Fox Bluegrass Festival and Pickathon..

He played bass on Town Mountain's 2016 Southern Crescent album. Chaffins left the Town Mountain group at about the same time.

As 2017 began, he was a part of a show with Folk Alliance, appearances in New York City, and similar activities.

Chaffins played an electric bass starting at around 12, and later earned a scholarship for operatic vocals. While at Morehead State University he focused on jazz studies.

He has often stressed he was always determined to leave home and pursue a music career.

Chaffins emphasized, "I never had 'Nashville Superstar' aspirations, but music has always been an amazing way for a person to build a different kind of life."





## *Kelsie May Signs Record Deal With Affiliate of Universal Music Group*

Kelsie May of Louisa has remained a hard-working singer and songwriter since she made a big splash in 2015 on Season 8 of NBC's *The Voice*. She announced Friday evening, February 24 live from her Facebook page that big things had been happening on her road to stardom and continued accomplishment in the music business. During Kelsie May's live Facebook announcement, she said "I will be shooting a video on April 2, in Nashville, and will use four individuals who registered to win an appearance in the video during her March 18 concert.

A special press conference and Launch Party happened Saturday, March 18 at around 6 p.m. and preceded her first show of the year at the Mountain Arts Center in Prestonsburg. "Co-headlining my own show there is awesome," she said. My first single with my new record label is called "Drivin'". She completed a signing with the Blue Sapphire record label of Canada in February of this year. Blue Sapphire is also an

affiliate of Universal Music Group, a worldwide operation. She has just released an EPM titled "Love Is Where You Find It". A short while after her impressive run on *The Voice*, May linked up with Bob Kinkhead, CEO of the Kinkhead Entertainment Agency. She has also been worked with Grammy nominated, legendary music producer and songwriter David Malloy. Malloy has 41 Number One hits and his associations include Dolly Parton, Reba McEntire, Tim McGraw, Kenny Rogers, Julianna Hough and Billy Gilman. The winners for the video shoot were drawn during the concert at

different times. They range in age from 16-19. Each of the winners will be given 150.00 to buy gas and food and

hotel room. Provide a professional make-up artist for winners the day of the shoot.

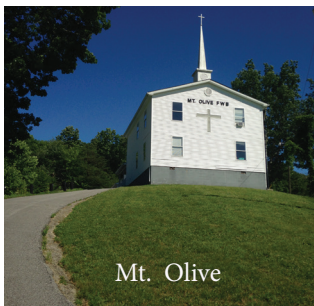


Kelsie first came on the scene on NBC's *The Voice*





## Heritage Harvest Tour Shows A Country Side To Life In Autumn



Mt. Olive



Scarecrow Village

### In Lawrence County, September 30-October 1

The Heritage Harvest Tour is a self-guided tour of farms, country churches, and other home-spun stop-offs in Boyd and Lawrence counties. The tour allows folks to partake in some excellent meals, visit working farms, take in a bit of history, and see things that many probably never knew existed so close to home. And, in so doing, they will enjoy the gentle hospitality of the rural people of two coun-

ties, Lawrence and Boyd. The driving tour along U.S. 23 and Ky. 3 will be from 9 a.m. to 5 p.m. Saturday and 1 p.m. to 5 p.m. Sunday. People can participate in whatever portions of the tour they choose during those times.

Come and enjoy a beautiful autumn weekend with us on the "Heritage Harvest Tour." For more information call 606-673-9495 and like us on Facebook.



## Louisa Super 8



**191 Falls Creek Drive  
Junction of Hwy 23 and 3  
Louisa, KY 41230  
(606) 638-7888**

- ◆ **Free SuperStart Breakfast**
- ◆ **Whirlpool Suites**
- ◆ **Free Wireless Internet**
- ◆ **Copy & Fax Service**

**See you along the way<sup>SM</sup>**

**1.800.800.8000 super8.com**





**JOSH OSBORNE accepts an award with associate Shane McAnally at the Ryman.**

## **Pike County's Josh Osborne Has Become A Premier Country Songwriter**

Josh Osborne began writing songs at age 13 in his hometown of Virgie in Pike County. When he was 15, he would travel to Nashville and often did open mike performances. He credits his parents with full support and encouragement.

He scored his first #1 hit after Kenny Chesney's 'Come Over' topped the country music singles charts in 2012 for two weeks.

He had a hand in writing 10 number one songs in the next three years, including Kenny Chesney's "Wild Child," the Eli Young Band's "Drunk Last Night," "Sangria" and "My Eyes" by Blake Shelton, Billy Currington's "We Are Tonight," "Leave The Night On" and "Take Your Time" recorded by Sam Hunt, Keith Urban's "John Cougar, John Deere," and John 3:16, and "Real Life" by Jake Owen.

He was honored by a Grammy award in 2014 for Best Country Song, "Merry Go Round" recorded and co-written

with Kacey Musgraves. Osborne has also contributed to hit songs from The Band Perry, Kelly Clarkson, Tim McGraw, and Miranda Lambert and a duet by Kenney Chesney and Pink titled "Setting The World On Fire".

When Osborne met Shane McAnally he joined his publishing and artist development company, SMACK Songs.

In 2014, his monumental success as one of Nashville's best writers led to his name being added to the Pike County Country Music Highway signs north and south. Osborne has multiple ACM Songwriter of the Year nominations, and "Leave the Night On" was honored as Song Of The Year at the ASCAP awards in 2015.

After moving around in Nashville since age 15, he was given an official songwriting job with Warner Chappell Music. Osborne has been "kicked around a little", his colorful reference to the competitive, rough and tumble music business. "Publishing companies

were willing to take a chance on a few young writers. They had seen me playing around in town and they were looking for a young writer, somebody they could develop. They judged me to be someone they could spend a little bit of money for a couple of years and see what would happen.

When he began in the songwriting business he recalled writing large numbers of songs. A short while later, he came to the realization that pushing to get someone to record the songs was more important than just trying to write something good, that he really connected with.

"When you're a young writer you feel the pressure of the publishers pushing for "songs to be cut".

When Osborne first met Shane McAnally, he felt he could be on the cusp of considerable success. "When someone that close to you has a hit song on the radio, it is easier for you to see it happening to you," he says.

In a recent interview with Songwriter's

Universe, Osborne summed his present status and career success this way: "I've been very successful. In the last five or six years, I've had like 85 songs recorded, but over the last five or six years, I've probably written 700 songs. Therefore, as somebody that's having a lot of success, still the majority of my stuff is not being heard. I think you have to understand that you're writing the majority of the stuff for yourself. You have to write songs that you're proud of because if you like them and you're proud of them, somebody else is going to like them."

Osborne has some plain advice for the many other songwriters planning on making a career out of it. "Go ahead and come to Nashville, and realize you will get beat up a bit. You'll compete against people who do this every day and are very good writers. But, there's something always to be said about being in the game and just trying."



Josh Osborne grew up in Virgie.



# 5 Reasons To Plan Your Weekend Getaway in Pikeville/Pike County, KY

Enjoy an outdoor excursion through the land where the Hatfields & McCoys called home, Pikeville/Pike County, Kentucky. Visitors from all around the world have explored the historic sites where the infamous feud took place, but it is Pike County's natural beauty, exquisite dining and live entertainment options that have transformed the passing visit into a weekend getaway. Below are 5 reasons you should plan your weekend getaway with us.

## 5) Outdoor Adventure with Zip, Saddle & Paddle

Zip-line atop the 8th wonder of the world, the Pikeville Cut-Through, ride horses through a scenic mountain trail, and kayak down Pikeville's serene lazy river. Pike County, Kentucky offers a wide range of outdoor activities, all within close proximity to our top-notch hotel accommodations.

## 4) 2 Award Winning Theatres

Experience a great show at one of our two award-winning theatres, Jenny Wiley Theatre of Pikeville and ACT theatre in Elkhorn City. Each theatre showcases a variety of productions, from comedies to musicals and dramas.

## 3) Car Shows & Drag Racing at Muscle on Main

Pikeville's Muscle on Main has exploded in popularity over the past several years, as gear heads from all over the country file into our beautiful city to test, tune and tinker with classics, hot rods and more. Featuring drag racing, this exhilarating event is held on the second weekend of every month, May through October.

## 2) Incredible Music at Main Street Live!

On the first and third Friday of every month, May through October, visitors can experience our region's unique blend of musical talent on the Main Street Expo Stage in Pikeville. Each Main Street Live! event differs in musical flavor and comes complete with food, friends and fun.

## 1) Coming This Fall Dueling Barrels Distillery & Brewery

Pikeville is excited to announce the opening of the Dueling Barrels Distillery and Brewery, Fall, 2017. Pikeville's premiere brewery and distillery will be located in beautiful Pikeville downtown area, near the Jenny Wiley Theatre and Pikeville's downtown shopping. This facility will be producing beers, bourbons and moonshines, with tours available for our visitors.

**For Inquiries & to Request a Pike County KY Brochure:**

Call: (606) 432-5063 or visit [www.TourPikeCounty.com](http://www.TourPikeCounty.com)

**Close, Convenient & Comfortable Pikeville Lodging**



Daniel Boone Inn



Hatfield & McCoy  
Inn at the Riverside



Pikeville-Pike County, KY Visitors Guide





## *Coming Fall 2017 Pikeville-Pike County, Kentucky*



Dueling Barrels Distillery and Brewery will be coming to Pikeville Fall, 2017. Pikeville's premiere brewery and distillery will be located in beautiful Pikeville downtown area, near the Jenny Wiley Theatre and Pikeville's downtown shopping. This facility will be producing beers, bourbons and moonshines, with tours available for our visitors.

Pikeville-Pike County, Kentucky is the hub of Eastern Kentucky, featuring high quality lodging such as the Hilton Garden Inn, Hampton Inn, Landmark Inn, Brookshire Inn and Holiday Inn. Pikeville Also features unique downtown shopping, the historic Hatfield McCoy Feud Tour, outdoor adventure, such as hiking, biking, ziplining, horseback riding, kayaking, canoeing and much more!

### **For More Information**

**(606) 432-5063 or visit [www.TourPikeCounty.com](http://www.TourPikeCounty.com)**

Paid in part by the Kentucky Department of Travel & Tourism

**Kentucky**  
UNBRIELED SPIRIT



January - Fall 2017 • Biblical Archaeology Exhibit

# KHIRBET EL-MAQATIR

AND A JOURNEY THROUGH BIBLICAL HISTORY

## Pikeville-Pike County, Kentucky 2017 Featured Attractions



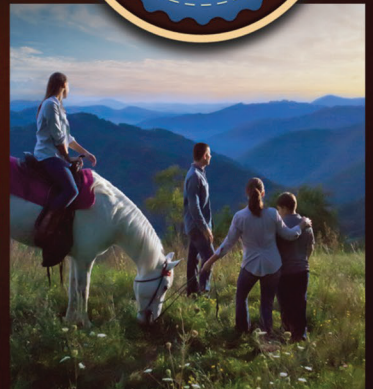
**Muscle on Main**  
2nd Weekend  
May - Oct., 2017



**Live Music on Main Street**  
1st & 3rd Fridays, May - Sept.  
And 2 Award-Winning  
Theatres



**Hatfield & McCoy  
Historic Tours**  
Audio Driving Tour  
CD Available



**Outdoor  
Adventure**  
Breaks Interstate Park  
Zip, Paddle & Saddle

Contact Us: (606) 432-5063 or visit [www.TourPikeCounty.com](http://www.TourPikeCounty.com)

Paid in part by the Kentucky Department of Travel & Tourism





# Knott County Horse Trail Rides Over 50,000 acres!

SPRING TRAIL RIDE: MAY 4, 5, 6, 2017  
Gates Open April 30th

- RIDE
- CAMP
- VENDORS
- MUSIC



*New for 2017!*

**HEDRICK**  
 RODEO COMPANY  
 Friday & Saturday!

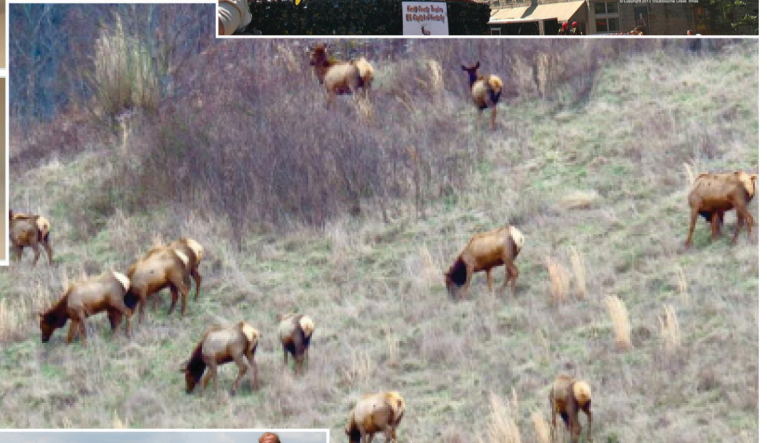
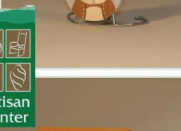
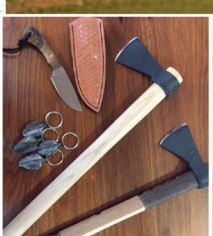
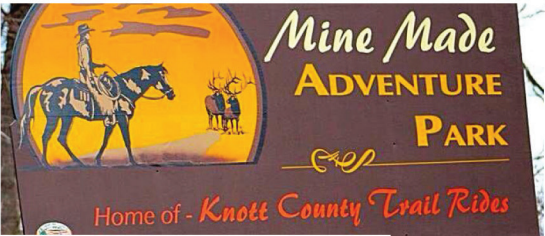
FALL TRAIL RIDE: OCT. 5, 6, 7, 2017  
Gates Open October 1st



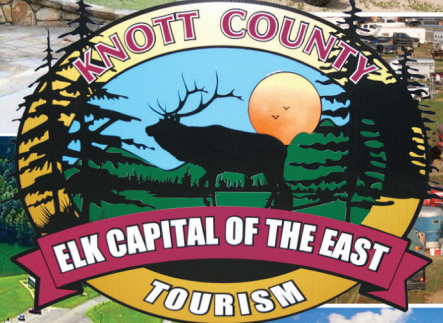
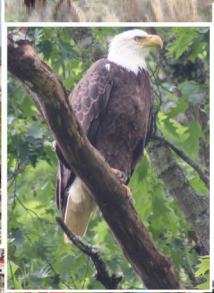
Check out **Knott County Tourism** on Facebook!



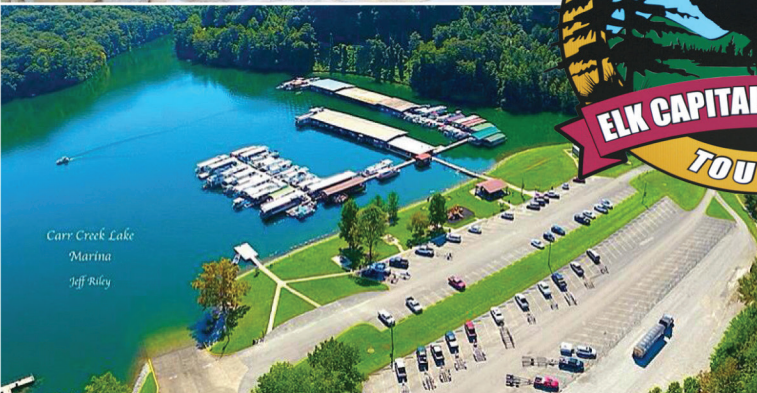
# VISIT BEAUTIFUL KNOTT COUNTY!



Appalachia Day Homecoming  
October 14, 2017



Horse Trail Ride  
May 4-6, 2017  
October 5-7, 2017



SOMETHING FOR EVERYONE - ALL YEAR ROUND!



## LORETTA LYNN IS HONORED WITH 2017 GRAMMY NOMINATION

Loretta Lynn has exemplified the essence of American Country Music, as a performer, songwriter, and ambassador to the world for plain talk and wholesome entertainment.

Still ready and able to capture a Grammy nomination this year at age 83, her album *Full Circle* came out in the Spring of 2015, and was well received by the masses.

Loretta Webb was born in Butcher Hollow, KY, part of the coal town of Van Lear, on April 14, 1934. The second of eight children born to Ted and Clara Webb.

During the first twelve years of her life, she sang in churches and at a variety of local concerts. With her parents blessing and encouragement, young Loretta soon found her voice and a place where it would be appreciated.

She was 13 years old when she married Oliver "Mooney" Lynn. After the marriage was just a few months old, Mooney and Loretta's brother, Jay Lee Web, Jr., hitchhiked to Washington state in search of work. After several months, Mr. Lynn sent his pregnant 13-year-old spouse a train ticket to join him over 2600 miles away.

Settled into a new state a mere 40 miles from the Canadian border, 14-year-old Loretta gave birth to her first child, Betty Sue, in Custer, WA.

Loretta was a housewife and teenage mother, and for a time withdrew from singing publicly.

Instead she expressed her passion for music by a lot of singing to young Betty Sue Lynn. By the time she was seventeen, Loretta had four children.

Inspired by his wife's vocal abilities, Mooney bought his wife a guitar on her eighteenth birthday, and Loretta began to teach herself to play. Within a few months, Loretta was writing her own music and with encouragement from her husband, she began singing with a local band on the weekends.

Loretta's big break came when Mooney entered her in a local talent contest. Not only did she win, but she also received a personal invitation from Buck Owens to perform on his television show. Her performance was well received and caught the attention of Zero Records, who immediately contacted her and offered a recording deal.

Loretta flew to LA in 1960, and recorded one of her own songs, "I'm A Honky Tonk Girl." Zero Records was a small firm and didn't have the money to promote Loretta's new single, so Mooney decided to do it himself. He and Loretta began mailing the record across the country, where it landed in the hands of radio station owners and disc jockeys. Mooney then packed the family and headed for Nashville, where he hoped he and Loretta could plug the record at local radio stations. The song was be-

coming a hit even before they reached Nashville.

The single eventually climbed as high as number fourteen on the charts. Loretta's first single attracted the attention of the Wilburn Brothers, who hired her to tour with them in 1960. After pleading with her to relocate to Nashville, Loretta and family moved to the city in 1960. A year later, she became a regular member of the Grand Ole Opry, had a number one hit album, and gave birth to twin girls.

It didn't take long for Nashville to reward her

talent with a prestigious record deal with Decca Records. "Success," Loretta's first Decca single was released in 1962, and climbed all the way to number six. For the next decade, Loretta released honky tonk hit after hit, all of them reaching the Top Ten List.

In 1966, longing for her own sound, Loretta strayed from Honky Tonk, and began recording singles that she had written. Over the course of the next four years, Lynn pulled in 13 Top Ten hits, and was

(Continued On Page 18)

Enjoy our majestic, panoramic  
"Grand Canyon Of The South"

Up in the mountains of Virginia and Kentucky where uncommon history, heritage, and heart extend a welcome.

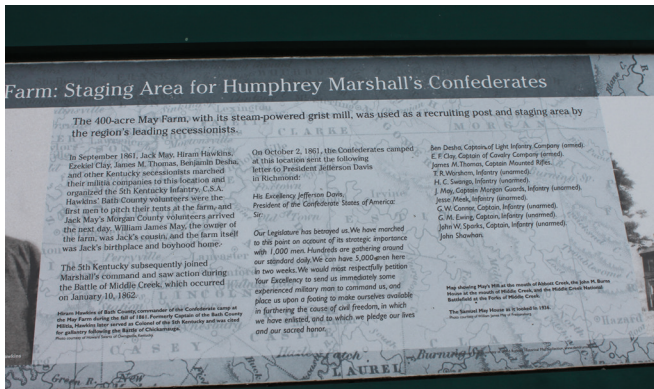
Be sure to join us on June 9 & 10 for our Mountain Of Music Festival !!

We present old-time traditional  
bluegrass programs monthly

ENJOY CAMPING ROCK CLIMBING,  
HORSEBACK RIDING, HIKING, FISH-  
ING AND BIRDWATCHING. OUTDOOR  
FUN AND ADVENTURE IS ALL  
AROUND AT THE BREAKS



Information please call 276-865-4413 or  
visit our website at [www.breakspark.com](http://www.breakspark.com)



## The Samuel May House Has A History All Its Own

It's a grand old house sitting on a gentle knoll inside the Prestonsburg city limits on the north end.

The Samuel May House was built in the early days of the 19<sup>th</sup> century, using old fashioned construction methods and techniques.

In 1993, a group

of Prestonsburg citizens formed a group called Friends of the Samuel May House, Inc. Their efforts produced small successes until a grant was given to the city to allow full restoration in 1997. The \$400,000 grant coincided with the house and lot be-

ing bought by the city.

Now, the house is open for guided tours. It is known as the Samuel May Living History Museum.

Samuel May moved from Virginia to Floyd County in 1808. He soon acquired the site where his house was constructed some

13 years later. By then, He had acquired a river-side farm of 350 acres.

May was a slaveholder, and in 1821, his slaves began to produce the bricks to build the house in kilns nearby.

The pattern in which the bricks were

### Whether Your Home Is A Grand Old House, Like the Samuel May House, or Newly Constructed, Taylor Metal Can Do Your Next Roof, Siding Project, Industrial Job, Or Build a Pole Barn



Ky 80 Prestonsburg



Gateway Industrial Park Jenkins

**BEST PRICES!!!**

Business-Agricultural-Residential-Building Pkg.

Where the smart money always goes!

16 strong durable colors with a 40-year paint warranty



We have served this region since 1998



**Loretta Lynn Gains Grammy Nomination As She Enjoys A Peerless Country Music Career**

(CONTINUED FROM PG. 16) hailed the best country music lyricist ever.

In 1970, Loretta became the first ever female country artist to receive a gold album. Conway Twitty and Loretta formed a partnership and released 5 successful hit songs. They were awarded Duo of the Year by the Country Music Association, and released seven more Top Ten hits.

In the mid 1970s, Loretta put pen to paper, writing the autobiography, "Coal Miner's Daughter." Six years later, in 1976, Loretta's book became a New York Times best seller. The book would eventually be adapted to the movie in 1980, and garnered critical acclaim. Actress Sissy Spacek won an Oscar for her performance. While the movie and the movie's theme song climbed the charts, Loretta became the only female country celebrity to appear on the cover of Newsweek, in 1973.

Despite her immense popularity as a result of the movie, Lynn never quite regained her place at the pinnacle of country music. Her concerts were well attended, but record sales were down. She had two Top Ten hits in the he 1980s and was elected to the Country Music Hall of Fame, but still made the decision to back away from the recording studio, so that she could focus her efforts on performances.

Today, Loretta is a successful businesswoman who owns her own music publishing company. She also owns and operates a Dude Ranch and campground in Hurricane Mills, Tennessee, featuring a plantation styled home that is an exact replica of her childhood home. Loretta continues to perform across the United States, and has released several singles.

Loretta and Mooney's children take turns balancing the responsibilities of the Loretta Lynn Ranch and Campgrounds in Tennessee, and several serve as part of her touring entourage.

**Looking for Good Food?  
You'll always find it here. family style.  
We cater, too!**



Homestyle meals, fresh and delicious!  
**Angie's Cast Iron Grill**  
in the historic Paintsville Country Club  
606-264-4517

*a visit to Van Lear, Ky. allows you to see things just as they were when Loretta Lynn was a girl!*



*the old company store*



*Loretta Lynn's Homeplace*

*Johnson County's  
TOP  
Tourist  
Attraction!*



*The Coal Museum*

*Come To  
Van Lear  
Days ,The  
First Weekend  
in August!  
You'll Love It!*

**www.VisitVanLearKentucky.com**  
**VanLearTourism@yahoo.com**  
Phone 505-789-8540





Join Us  
Today!



Wedington Square Pikeville



Ky. 321 Paintsville



Glyn View Plaza Prestonsburg



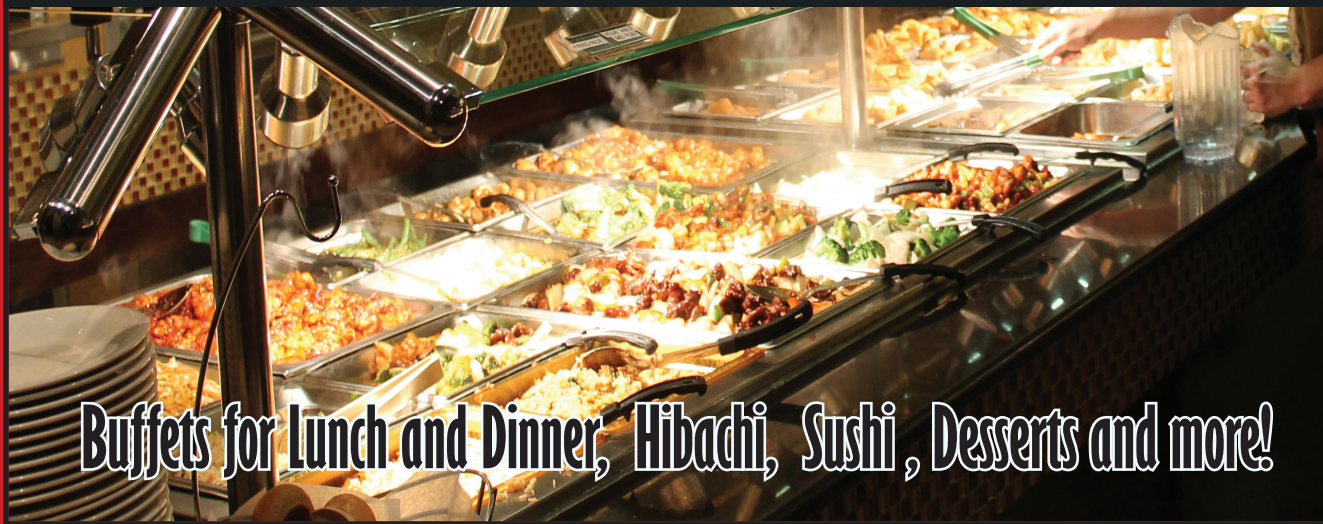
205 South Mayo Trail Pikeville



244 Cassidy Blvd. Pikeville



244 Cassidy Blvd. Pikeville



Buffets for Lunch and Dinner, Hibachi, Sushi, Desserts and more!



## Simpson Is Another East Kentucky Talent Making It Big

Breakout star Sturgill Simpson began life in Jackson, Breathitt County, Kentucky, just about 30 milewws from Hazard. While he was still a young boy, his family moved to Versailles.

Then came a military call that moved him far away to Japan. When he got back, during a stay in Lexington, he fronted for a classic country group named Sunday Valley.

He soon headed West to work for the railroad. It wasn't long until he felt unfulfilled without music going on in his life. Simpson has been a resident in Nashville around five years since relocating.

"I was in Utah working on a railroad, writing songs at night. My wife made me quit that job and move to Nashville. Thank you, babe," he said.

"Next came the birth of our first son around the time my last record came out. So I spent the first

year of his life on the road, missing him and her. And if it hadn't been for them, I wouldn't have written this record. So I have to dedicate this to my family."

Simpson made his US network television debut on July 14, 2014, on the Late Show with David Letterman, playing "Life of Sin".

That year, he would go on to play "Living the Dream" on Conan, "Turtles All the Way Down" on an October episode of The Tonight Show and "The Promise" on a December episode of Late Night with Seth Meyers. In 2015, he returned to *The Late Show* and *Conan* playing "Long White Line" in February and "Let It Go" in April.

He has also played the Grand Ole Opry and at Austin City Limits. He has opened for artists like Dwight Yoakam, Willie Nelson, Merle Haggard, and the Zac Brown Band. He joined folk legend John Prine at the 2016 Farm Aid.



**Serving Delicious Homestyle Breakfast, Lunch & Dinner!**  
 Sunday - Thursday 7am-9pm    Friday & Saturday 7am-10pm

[www.pinemountaingrill.com](http://www.pinemountaingrill.com)  
 Dine In - Carry Out    45 Highway 119 South • Whitesburg, KY    606-633-1183





THE LINE WAS LONG for a tour of Savage Farms in Northwestern Lawrence County during their first annual Maple Syrup Festival. Folks were shown the tapped Red Maple trees releasing sap.

**Farm Hosts Maple Syrup Festival, Is Kentucky's Largest Syrup Producer**

Traditionally, the region that provides the best maple syrup is New England, and Vermont in particular. Lately, maple syrup from a new producer from Lawrence County, Kentucky was judged (continued on next page)

**WELCOME! WE HAVE SOMETHING GREAT FOR YOU!**



**HOMEMADE TASTES BEST!**

*J and J Family Restaurant*

5260 13th Street U. S. 60  
Ashland, KY.

**Expanding Summer 2017**

to enlarge Low Altitude area, add Climbing Walls and Ninja Course!



**TRAMPOLINE PARK**

KYOVA Tri-State Mall  
10699 US Route 60, #970  
Ashland, KY 41102

606-929-JUMP

[www.ExtremeAirKY.com](http://www.ExtremeAirKY.com)



## Lawrence County Farm is Now Kentucky Top Maple Syrup Producer

(From previous page) a taste test to be a worthy competitor to the renowned maple products from Vermont. Savage Farms can be found along Kentucky Route 3 in Lawrence County around 9 miles northwest of Louisa. It is a family enterprise, led by retired Kentucky State Trooper Keith Moore, his wife Jennifer, and son Wesley, and fiancée, Holly. Moore retired as an administrator at Kings Daughters Medical Center in Ashland at the end of 2015.

In keeping with their evolution as a commercial producer of maple syrup and maple products, on Saturday, March 25 Savage Farms hosted the first ever annual Maple Festival. Everyone was able to enjoy a visit at their country store at Savage Farms. The farm regularly showcases a variety of products and will be open every weekend after March 25<sup>th</sup>. Visitors can enjoy sheltered seating to relax and drink a cool beverage or eat some ice cream.

The event started with a pancake breakfast, followed by tours and demonstrations that

showcase Savage Farms many maple products produced on their farm.

The farm has over 200 Red Maple trees and has been building a reputation for maple-based choices at their store beside Highway 3, like pecan maple pies, maple butter, and maple candy. They have been producing commercial products on their farm now for over three years. They also make sorghum and grow strawberries and blueberries.

Savage Farms is the only commercial syrup producer in eastern Kentucky, and one of just three statewide.

Savage Farms participates in what is known as agri-tourism, a grouping together of progressive farms for tours and demonstrations of their products for the special benefit of visitors and tourists.

Over the last few years, they have pushed to provide local homegrown products.

"It has been very challenging working full-time jobs and working the farm business and we thank you for your patience,

said Jennifer Moore.

They can now fully focus on full time farm business. Our signature product has been maple syrup and maple products. The demand has been strong. A year ago, they were able to tap only 200 trees. This year 1,500 taps will be possible using new sophisticated equipment to make the production more efficient.

The Moores have been dabbling with maple products for 20 years, but have only

been producing and selling their wares for the last three years.

Now, with the ever popular Heritage Harvest Tour, of which both farms are a part of, business has grown rapidly. "Agri-Tourism is huge."

Currently, Savage Farms has a processing area and a commercial kitchen. Moore said there is a misconception that only sugar maples can be tapped for syrup. "A red maple tastes about

Continued on Pg. 26



**So much, so close!**

Step back in time and see a blacksmith hone his craft at Heritage Farm Museum & Village. No matter who you are, there is something for everyone in Huntington. For all there is to see and do check out [visithuntington.org](http://visithuntington.org), give us a call at 304.525.7333 or stop by our Visitors Center!

**Cabell**  
**Huntington** CONVENTION & VISITORS BUREAU  
WEST VIRGINIA

#VISITHUNTINGTONWV  
[visithuntingtonwv.org](http://visithuntingtonwv.org) | 304.525.7333

f t YouTube i



Join the thousands of guests who  
visit Blenko Glass Company each year!



Exquisite color, skilled craftsmen, and creative designs have made Blenko famous in the ancient craft of hand-blown glass. Over the years, talented designers have developed contemporary new designs for our skilled artisans, who have learned the difficult techniques of glass blowing through many years of practice.

In a world of increasing automation and standardization, we at Blenko pride ourselves in paying particular attention to the forms and designs, which stay true to the tradition of hand blown glass. We all need - now more than ever - hand made objects that are unique and inspiring. For over 100 years Blenko has maintained the tradition of hand made glass. Please browse our website and become a part of our tradition.

**Blenko**  
GLASS COMPANY

Monday - Friday 8am - 5pm  
Saturday 9am - 5pm  
Sunday 12 am - 5pm  
Please call for tour info  
Hours and days are subject to change  
Please call to confirm



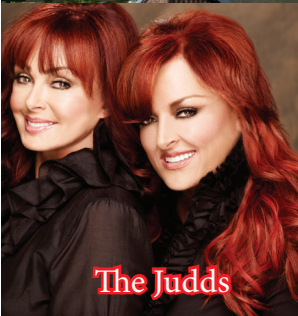
9 Bill Blenko Drive . Milton, WV 25541 . 1.877.425.3656 . [www.blenkoglass.com](http://www.blenkoglass.com)



# You're Always Welcome In Ashland and Boyd County, Ky.



Photo by Tom Worden



The Judds



Billy Ray Cyrus

These Are Our Superstars

Attractions:

- Paramount Arts Center
- Highlands Museum & Discovery Center
- Pendleton Art Center
- Jesse Stuart Foundation and Bookstore
- Rush Off Road Trails

Festivals:

- SUMMER MOTION
- POAGE LANDING DAYS  
Third Weekend In September
- CATLETTSBURG LABOR DAY
- WINTER WONDERLAND OF LIGHTS



entertainment

www.vsitashlandky.com  
or phone  
1-800-377-6249  
e mail:  
aacvb@visitashlandky.com

**Kentucky**  
UNBRIDLED SPIRIT  
city fun, county  
adventure!



Adventure Rush Off Road



## ***Ashland and Boyd County: A Beautiful and Vibrant Community; The Pride Of Northeast Kentucky***

Ashland and Boyd County is situated on the southern banks of the Ohio River. This area has long been an industrial center extending from Huntington, West Virginia westward toward the historic Boyd County town of Catelettsburg, through Ashland, and going on to Russell. Across the River from Ashland is Ironton and the southern Ohio population center stretching eastward to Chesapeake.

A key building block for this area was the oil industry and major refinery at Catlettsburg. This massive, eye-catching industrial operation will be the first memorable, panoramic spectacle motorists see when they leave West Virginia and cross the Big Sandy River into Kentucky.



Then, there's the steel industry and the railroad. The old Armco steel mill was a key to the town's industrial might, and there was a central train yard, roundhouse, and maintenance shop in Russell.

This is the 25<sup>th</sup> anniversary of Billy Ray Cyrus' unforgettable breakout hit, "Achy Breaky Heart". This smash hit was recorded at the Paramount Arts Center. Superstar Billy Ray Cyrus actually started his musical quest a few miles north in the Greenup County community of Flatwoods. He is also a TV star and father of TV and rockstar Miley Cyrus.

Miley starred in TV's Hannah Montana series. His daughter, Noah, just released a chart-climbing pop hit.

In the summer, everyone along the river and for miles around look forward to two festivals, Summer Motion around July 4<sup>th</sup> and Poage Landing Days the third weekend in September.

Ashland's Central Park is a beautiful spot no matter what the season. As shown above, the summer view in the park is quietly serene with plenty of shade and sparkling fountains. In the winter the elaborate Christmas lights adorn the entire park and people come from miles around to view the displays.

The Pendleton Art Center showcases the numerous and varied artistic talents in the region.

The Highlands Museum and Discovery Center is a comprehensive and ever changing museum occupying three floors on Winchester Avenue. A major remodeling project was completed this Spring. A traveling Smithsonian Institute display is among this year's highlights.

The Paramount Arts Center a venue renowned for their continuous showcasing and thrilling fans by making available nationally known entertainers and groups. The calendar is always full, and there is something for everyone, including jazz and theater performances.

The adventure enthusiast should take advantage of a ride through the wooded hills at Rush Off Road trail just south of town. They maintain a full schedule of powersports events year round.

Here the motto is **city fun, county adventure** for all!

**Ashland/Boyd County Tourism and Convention Bureau**



## Kentucky Farm's Syrup Judged Equal To New England's and Vermont's Finest

(Continued from page 22 ) about the same as a sugar maple. The sugar content is about the same." He said other trees including walnut and even sycamore trees can be used to make syrup.

True sap is just water, although most confuse it with a sticky resin such as from a pine tree. Moore said spring is the time to tap trees, and sometimes they can get up to 7 gallons a day. Buckets are not used anymore to catch the sap, instead, a gravity fed tubing system ciphers the sweet liquid into a tank, where it is cooked and made into syrup.

Although Kentucky is not known as a syrup making state, Moore said in a taste test, you couldn't distinguish between the Vermont syrup and Kentucky syrup.

"A woman from Vermont told us our syrup would stand up to any Vermont made syrup," Moore said with pride.

To purchase products from Savage Farms or set up a time to see the tree tapping and syrup making, call 605-686-1120 or 606-465-2857. or email keith.moore@kdmc.net. Like Savage Farms on Facebook.



Historic 1938 Building Scheduled For A Major Renovation

The old Elkhorn City High School was built in 1938 and along with an adjacent elementary school building, a small band room building and a

nearby apartment have been sitting vacant.

A grant from the Department for Local Government in Frankfort has released \$636,000 in Community Block Grant

funds to rework the high school's structure.

The building's 35,000 square feet space will be used to create 27 apartment units for low and moderate income citizens.

# HIGHLANDS MUSEUM & Discovery Center

Showcasing History about:

- River Navigation
- Military and World Wars
- Industrial Development
- Schools in the Area



Country Music Heritage Displays and detailed artist information.



Historic Displays about the Ashland area

**ONE COMPLETE FLOOR  
JUST FOR KIDS!**

EXPLORE INTERACTIVE & ROTATING EXHIBITS  
THE ENTIRE FAMILY CAN ENJOY

1620 WINCHESTER AVE. ASHLAND, KY 41101  
606-329-8888

WWW.HIGHLANDS MUSEUM.COM

Hours: Wed. & Fri. 10-4 Thurs & Sat. 10-8





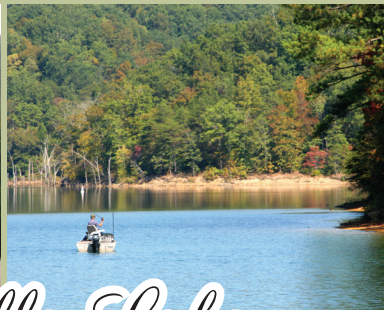
# Jenny Wiley

## State Resort Park

### Ready for the Season

- Lodge Rooms Overlooking Dewey Lake
- Music Highway Grill and Dewey's Lounge
- Picnic Shelter for Weddings and Events
- Boat & Canoe Rentals Open Memorial Wknd.
- One- and Two-Bedroom Cottages
- Convention Center & Meeting Rooms
- Hiking & Biking Trails Year-round
- Playgrounds & Campground Now Open

75 Theatre Court • Prestonsburg, KY • 606-889-1790 • [parks.ky.gov](http://parks.ky.gov)



## Paintsville Lake

### State Park

- Year-round Campground
- Full Service Marina w/Rental Houseboats, Pontoons and Fishing Boats, and Supplies
- Picnic Area & Playground

1551 KY 2275 • Staffordsville, KY • 606-297-8486

## Yatesville Lake

### State Park

- 18-Hole Eagle Ridge Golf Course
- Campground + Boat-in or Hike-in Sites!
- Marina with Pontoon Rentals and Supplies
- Hiking Trails, Picnic Area, & Playground

2667 Pleasant Ridge Rd • Louisa, KY • 606-673-1492

[parks.ky.gov](http://parks.ky.gov)





## GRANT FUNDING ISSUED FOR DANIEL BOONE HOTEL REFURBISHING PROJECT

On Main Street in downtown Whitesburg, the Daniel Boone Hotel is in line for a major refurb project. For many years, local leaders have envisioned this extensive remodel, and now a \$500,000 grant from the Appalachian Regional Commission and another \$500,000 from a Department of Local Government grant has got the dream project within grasp.

“Our Daniel Boone Hotel is for us, the centerpiece of historic architecture in Whitesburg,” said Bill Richardson, Architect for the Daniel Boone Hotel said.

“We consider the Daniel Boone a piece of our tourism puzzle,” said Whitesburg major James W. Craft..

Built around 1922, the hotel served as a centerpiece for the city, until it closed in 1970. The building was then used for office space until everything completely shut down in the early 1980’s.

Since then, Craft said, the building developed a

leak and slowly became unsafe. “The timber supporting it has decayed.” Craft said.

The mayor said “This building could be the key to our tourism plans.”

They expect renovations to cost \$6.5 million, but once open, the Daniel Boone Hotel will feature 44 guest rooms, a penthouse, boutique shops, and a high-end restaurant.

Craft said they plan to begin stabilizing the building in late spring or early summer.

Craft also said he does not know how long it will take to fully restore the hotel, as they still need to raise about \$4.5 million for the project.

Earlier Engineer Paul Nesbitt said the design is based on the Gratz Park Inn in Lexington and will provide a boutique hotel and a community center that is deeply connected to the county’s history.



**Wherever you travel throughout Southeast Kentucky, there’s a Double Kwik convenience store to serve you.** For 50 years our customers have counted on us for a friendly welcome, high quality fuel, fresh brewed coffee and clean restrooms. If you come hungry, you won’t leave that way! From fresh made biscuits, grab & go sandwiches and salads to fresh fried chicken and all the fixin’s, we’ve got you covered! And don’t forget to try a pizza roll, our signature item. We’re so much more than a convenience store. We’re Double Kwik!



## Kentucky Courting Filmmakers

Movie and documentary film makers have a friend in Kentucky. The state is actively recruiting them.

Tim Bates with the Kentucky Film Office of the Department of Travel and Tourism says through tax incentives a movie maker can see a \$5 Million project be made in Kentucky for around \$4 Million. "Ours is probably the best program in the nation"

"The goal of the Film & Media Arts Festival April 7 and 8 at UPike

is to promote the art of film-making. Paid submissions are accepted from across the U. S., but films submitted from Kentucky, Virginia, and West Virginia are free.

These entries can come from college or high school students, professionals, and middle school students.

"The primary result will be competitive screenings of films in the University's Booth Auditorium," said Aaron Asbury, a co-founder of the new festival for would-be filmmakers.

When seconds count, coverage matters.

Your phone could save a life.

# Appalachian

WIRELESS

Better Service. Bigger Savings.

911

Twitter and Facebook icons are visible in the bottom left corner.

# StoneCrest Golf Course

## 18 Hole Championship Course

Owned and Operated by the City of Prestonsburg

- ◆ Fully stocked Pro Shop
- ◆ Lessons Available
- ◆ Driving Range
- ◆ Practice Greens
- ◆ Restaurant

For Tee Times Call 606-886-1006  
918 Clubhouse Drive  
Prestonsburg, KY 41653

[www.StoneCrestGolfCourse.com](http://www.StoneCrestGolfCourse.com)

Photo courtesy Allen Bolling  
ABProPhoto.biz



## MISS VANHOOSE IS MAKING FRIENDS AND FANS AT HIGH PROFILE VENUES

Just hearing Marlana VanHoose sing has turned many into staunch fans of this 21-year-old Johnson County woman who has risen to a level of notoriety reserved for top performers. She is on the road a lot, and in the past year has been booked at events that showcase her success as a singer.

In fact, she has sang at President Trump's Inaugural event in January, and she actually got to meet the President at a rally in Louisville on March 20.

Recalling her meeting with the President, she said, "It was great, I kinda think he's very special. He's talked about God before on TV."

That suits Marlana very well, because she speaks freely about her faith wherever she goes, performing a lot of times at churches.

She spent some time talking with President Trump, and told him her heartfelt conclusions about his leadership. "Jesus Christ and God's word is the only thing that will make America great, with your help, sir."

Kentucky Governor Matt Bevin knows Marlana personally and actually helped move her close to President Trump. Marlana said the President commented, "She's a talker!"

She was the first one to have her picture taken at the

rally. She also had a conversation that evening with Gov. Bevin.

VanHoose's list of accomplishments is ever increasing. She was commissioned a Kentucky Colonel in

side Edition, and Entertainment Tonight.

She is diminutive and was born blind due to an unfortunate virus that inhibited the development of her optic nerves. She was also

Since they have been guiding her career she has been introduced to a worldwide audience. In 2013 the CBS Evening News aired a complete story on her "Teen's Big Voice Shatters Obsta-



June of 2016. She is in the company of major celebrities like Muhammad Ali, Elvis Presley, Johnny Depp, Marie Osmond, Mario Andretti, Pope John Paul II, Bill Clinton and Mae West.

She is a YouTube sensation, and has been covered by television shows like Good Morning America, Today Show, In-

terview, and diagnosed with a mild case of cerebral palsy.

She lives with her Mom and Dad in the community of Denver. They have been supremely supportive of Marlana's musical and vocal development.

In 2011 she became a member of the Artists Music Guild, a professional artists relations and protection firm.

cles." An ESPN feature story about VanHoose and the UK Women's Basketball, entitled, "Loud and Proud" was televised. VanHoose sang at the 2015 NBA Playoffs and game six of the 2015 NBA Finals. <sup>[3][4]</sup> She has performed at three various NASCAR Sprint Cup Series Races.

In 2016 Van (Continued on PG. 31



## The Samuel May House Is Steeped In Civil War History, and California Gold Rush

(Continued from pg.17) is known as a particularly sturdy method known as a Flemish bond. As with brick houses using this styling, the walls were four bricks in thickness. Tourists can see the stability the home still projects almost 200 years later thanks to May's building and design knowledge.

Samuel May suffered a financial reversal years later, and had to sell his home to his brother, Thomas May. Samuel then headed to California after gold was discovered and later died there.

The house be-

came a crucial recruiting and gathering place for Confederate armies during the Civil War.

Andrew Jackson May, Samuel's son traveled to California with his Dad, but returned a short while after his death. Jack May, as he was commonly known, had been a successful attorney in West Liberty in Morgan County at the outbreak of the Civil War.

May took advantage of the land around his childhood home in Prestonsburg as both a staging and recruitment area and re-supply post. A staunch Confederate, A. J. May helped

organize Company A of the 5th Kentucky Infantry. He later became Colonel of the 10th Kentucky Cavalry, C.S.A.

After the war, May settled in Tazewell, Virginia, where he became one of the area's most prominent attorneys.

His loyalty to the Southern cause led to many Eastern Kentucky, Southwest Virginia, and Eastern Tennessee residents referring to the

War Between The States as Jack May's War.

This spacious home was placed on the National Register of Historic Places in 1980.

Samuel May married Catherine Evans shortly after moving from Virginia. The couple were blessed to have 14 children.

He served as a Kentucky state representative and Kentucky senator.

## M. VanHoose Travels All Over

(Continued from prev. pg.) negie Hall as a premier guest.<sup>[6]</sup> She was the official anthem singer for the 2016 Republican National Convention and appeared on *Good Morning America* the next morning from the floor of the convention center.<sup>[6]</sup>

In December 2016 VanHoose opened the New York Rangers game at Madison Square Garden to an audience of over twenty thousand in attendance.

She returned to Louisville Thursday, March 20 for a conference at the huge riverside hotel, The Galt House.

She sang at the NCAA women's tournament at Rupp Arena in Lexington March 26.

It was at a performance at a Universi-

ty Of Kentucky women's basketball game in 2012 that went viral that sent her on her way to considerable notoriety.

Marlana is scheduled to do the Cincinnati Reds Opening Day on April 3.

She was invited back to Washington, D. C. in July for an event called Road To Majority.

Her itinerary will include key stops in April, like Pittsburg, Dallas, and New York City. H

Her parents were originally told she would not live past age one year, but she smiles and often says, "God had other plans!"

By the time she was two years old, she became a self-taught pianist, and the music hasn't stopped.

## Crystal Gayle Becomes A Grand Ole Opry Member

Grammy-winning songstress Crystal Gayle was surprised during her Grand Ole Opry late last fall by Opry member Carrie Underwood with an invitation to become an official Opry member. Gayle was formally inducted into the Opry on Jan. 21, 2017 by her sister, Opry legend Loretta Lynn.

Gayle, one of the Country Music Highway's primary superstars, made her Opry debut nearly 50 years ago on the Ryman Auditorium stage, singing the country classic "Ribbon of Darkness" at age 16. Crystal Gayle made her first Opry appearance when she performed in place of her Opry member sister Loretta Lynn who had been too ill make her scheduled appearance.

Underwood surprised the sold-out Opry at the Ryman crowd by joining Gayle on the smash hit "Don't It Make My Brown Eyes Blue." Seconds after finishing the duet, Underwood turned to Gay-

le and said, "You are an inspiration to so many of us. You are important to country music, and you are important to the Opry, which is why I was asked tonight to ask you if you would like to join our Opry family officially." Accepting her friend's invitation with a hug, Gayle said, "I have always felt like I was a member of the family and this is just so special."

"For more than half of the Opry's 91 years, Crystal Gayle has been lending her signature vocals to Opry shows and connecting with Opry audiences as well as with everyone backstage," said Opry Vice President and General Manager Pete Fisher. "She is family, and we are very excited that she'll be an official Opry member."

To escape musical comparison to her hit-making sister Loretta, Crystal Gayle developed her own vocal and musical style. She has 20 Number One songs to her credit.



Nationwide coverage

Wherever the highway  
leads you

**Appalachian**  
WIRELESS

Better Service. Bigger Savings.

