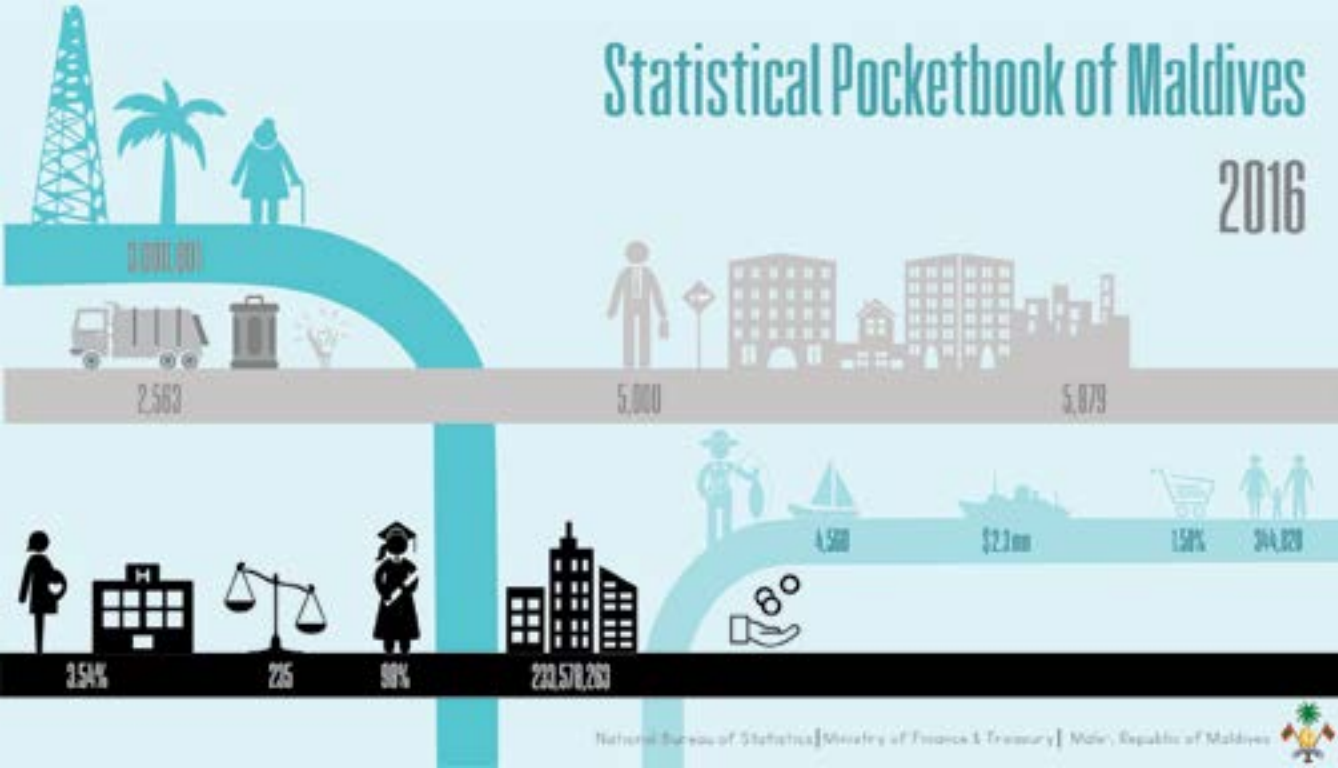


Statistical Pocketbook of Maldives

2016





STATISTICAL POCKETBOOK OF MALDIVES 2016

National Bureau of Statistics,
Ministry of Finance & Treasury
Male', Maldives.

© National Bureau of Statistics, 2016
Statistical Pocketbook of Maldives 2016

All rights of this work are reserved. No part may be printed or published without prior written permission from the publisher. Short excerpts from the publication may be reproduced for the purpose of research or review provided due acknowledgment is made.

Published by: National Bureau of Statistics,
Dhaarul-Eman Building,
Male' 20345,
Republic of Maldives,
Tel: 3008 400 / 3008 488 / 3008 462,
Fax: 332 7 351,
e-mail: info@stats.gov.mv
www.statisticmaldives.gov.mv

Cover Artwork & Layout Design by: Aminath Mushfiqa Ibrahim

Printed by: M7 Printers
Male', Republic of Maldives

CONTENTS

Geography	7	Transport & Communication	23
Population	9	Public Finance	25
Employment	11	Money & Banking	27
Health	13	Foreign Trade & BOP	29
Education	15	National Accounts	31
Law & Order	17	Prices	33
Fisheries & Agriculture	19	Poverty	35
Tourism	21	Pension & Social Protection	37
		Political Parties & Elections	39

GEOGRAPHY



Location		Area									
Latitude	7° 6' 35" N to 0° 42' 24" S	Area (including sea)		115,300 sq. km							
Longitude	72° 33' 19" E to 73° 46' 13" E	E.E.Z		859,000 sq. km							
Exclusive Economic Zone (EEZ)	859,000 sq. kms										
	2006	2015									
Number of Islands:	1,192	1,192									
Inhabited	194	187									
Uninhabited	998	1,004									
No. of Tourist Resorts (Including Marinas)	88	115									
	2005	2006	2007	2008	2009	2010	2011	2012	2013	2014	2015
Climate : (Male')											
Annual Rainfall (millimeters)	1,659.2	2,711.2	1,792.0	2,001.8	2,202.0	2,017.9	1,333.3	1,664.1	2,081.8	1,996.0	2,173.6
Total duration of sunshine (hours)	2,963.1	2,629.0	2,874.5	2,821.7	2,896.6	2,764.6	2,934.6	2,796.8	2,796.3	2,812.0	2,926.3
Annual average of daily											
- maximum temperature (degree Celsius)	31.2	30.9	31.1	30.9	31.1	30.9	30.9	31.2	31.2	31.3	31.3
- minimum temperature (degree Celsius)	26.1	26.0	26.2	26.1	26.3	26.5	26.4	26.4	26.3	25.8	26.5

1,192

Total Islands

187

Administrative Islands

26

Total Atolls

20

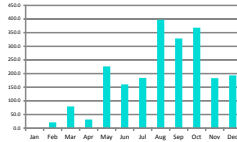
Administrative Atolls



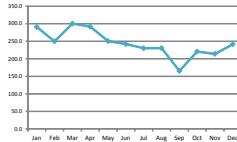
The temperature of Maldives ranged between 24°C and 33°C throughout the year. The average daily temperature has reached the maximum during April 2015 with 33.1°C in Hdh. Hanimadhoo. And the minimum temperature was the lowest during August 2015 with 24.3 in Gdh Kaadehdhoo.



Monthly Rainfall was highest with 481.3 mm during November in S.Gan, where the lowest was that of no rainfall during January in Male'



Monthly Sunshine was highest with 313.0 hrs during March in S.Gan, where the lowest was with 25.9 during June in S.Gan.



Relative Humidity 2015

Yearly Average %

Male'	77
H.Dh. Hanimaadhoo	81
L. Kadhdhoo	80
G.Dh. Kaadehdhoo	82
S. Gan	81

Wind Speed 2015

Yearly Average Miles/Hour

Male'	8
H.Dh. Hanimaadhoo	6
L. Kadhdhoo	5
G.Dh. Kaadehdhoo	5
S. Gan	5

POPULATION

(Census)	2006	2007	2008	2009	2010	2011	2012	2013	2014	2015
Total Maldivian Population	298,968								344,023	
Male	151,459								174,666	
Female	147,509								169,357	
Resident Foreign Population	na								63,637	
Male	na								55,787	
Female	na								7,850	
Inter-censal annual growth rate (%)	1.69								1.65	
Male ¹ population (%)	34.68								38	
Sex ratio (males per 100 females)	103								103	
Dependency ratio (dependants per 100 working age pop) ^{1,2}	57								48	
Economically active population (Resident Maldivians)	106,427								153,762	
Mid-year population (estimated)	300,466	304,869	309,575	314,542	319,738	325,135	330,652	336,224	341,848	347,552
Expatriate population (Immigration)	53,901	70,075	80,839	70,259	73,840	79,777	na	na	na	na
(Vital statistics)	2006	2007	2008	2009	2010	2011	2012	2013	2014	2015
Infant Mortality Rate (under 1) / '000 Live Births	16	10	11	11	11	9	9	6	8	9
Mortality Rate (under 5) / '000 Live Births	18	12	14	12	13	11	11	9	10	11
Crude Birth Rate / '000 Population ^{2,3}	19	22	22	24	22	22	22	21	21	20
Crude Death Rate / '000 Population ^{2,3}	4	4	3	4	3	3	3	3	3	3
Maternal Mortality Rate / 000 Live Births	1.0	1.0	0.6	0.8	1.1	0.6	0.1	0.0	0.4	0.7
Still Birth Rate / '000 Live Births	10	9	8	7	7	7	7	9	5	6
Total Fertility Rate (Censuses) (Children per Woman)	2.20								2.46	
Male Life Expectancy Rate	72.0	72.3	72.5	72.5	72.6	72.8	73.0	73.0	73.1	73.1
Female Life Expectancy Rate	73.2	73.7	74.1	74.2	74.4	74.8	74.8	74.7	74.8	74.6
Marriages	5,556	5,821	na	6,569	6,136	6,015	5,699	5,620	5,712	5,763
Divorces	2,177	2,345	na	2,680	2,795	3,016	3,011	3,331	3,402	3,358

^{1,2} Working age (15-64 years); Dependants (0-14 and 65+)

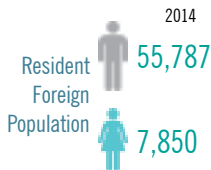
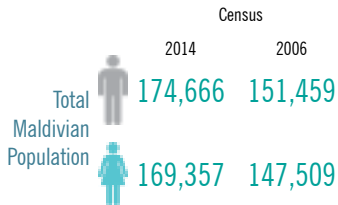
^{2,3} 1995 to 2000 figures, adjusted on the basis of mid-year population estimates

^{3,4} 9% of infant mortality is due to tsunami

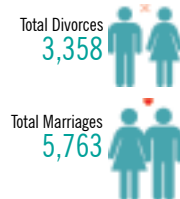
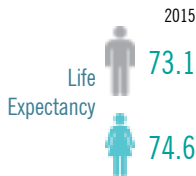
^{4,5} 21% of Child mortality is due to tsunami

^{5,6} Foreign population enumerated in Census 2014 is less than the official figures recorded in Immigration documents

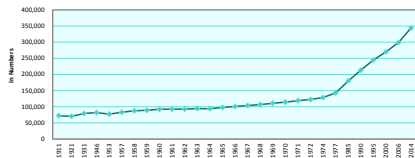
103 Sex ratio (males per 100 females) **38%** Male' population (%) **63,637** Resident Foreign Population **338,434** Resident Maldivian Population



9 Infant Mortality Rate (Per thousand live births)
0.72 Maternal Mortality Rate (Per thousand live births)
11 Mortality Rate (Under 5) (Per thousand live births)
2.46 Total Fertility Rate
20 Crude Birth Rate (Per thousand population)
3 Crude Death Rate (Per thousand population)
6 Still Birth Rate (Per thousand live births)
5.3 Neonatal Mortality Rate (Per thousand live births)



Census population of Maldivians, 1911 - 2014



EMPLOYMENT

	2006	2007	2008	2009	2010	2011	2012	2013	2014	2015
Government Employees										
Both Sexes	33,997	32,797	24138 ^{1/}	24,085	21,845	19,125	17,657	24,207	24,883	24,696
Male	20,909	19,417	11,507	11,456	10,464	9,728	8,603	11,219	11,547	11,191
Female	13,088	13,380	12,631	12,629	11,381	9,397	9,054	12,988	13,336	13,505
Percent change over previous year	-0.1	-3.5	-26.4	-0.2	-9.3	-12.5	-7.7	37.1	2.8	-0.8
Expatriate Employment (Immigration) ^{2/}	53,901	70,075	80,839	70,259	73,840	79,777	na	na	na	na
Employment Approvals Issued ^{3/}	na	na	na	na	na	na	na	57,424	45,584	58,527
Employment (Resident Maldivian population)	Census 2006								Census 2014	
15+ Population	188,889								244,956	
Employed Population	100,602								145,757	
Unemployed Population (ILO definition)/Seeking and available	5,825								8,005	
Unemployment Rate (ILO definition) (%)	5.5								5.2	

^{1/} With the formation of civil service, government employees figures includes civil servants only

^{2/} Due to change in the border control system used to generate the immigration data with new system established in November 2012, there is a discontinuity in consistent records.

^{3/} Employment Approval (EA) is a written statement by immigration, giving permission for foreigners to work in Maldives. Resident permit/work visa is issued based on this EA for those who apply for work visa.

24,696

Civil Servants (2015)
Census 2014

8,005

Unemployed Population
Census 2014

145,757

Employed Population
Census 2014

87,182

Outside Labor Force
Census 2014

5.2

Unemployment Rate
Census 2014



“Based on Population & Housing Census 2014, the employment rate is 94.8%”

Percentage of Local and Foreign civil servants, 2015

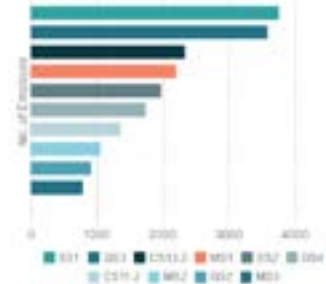


Civil servants by sex, 2015



Majority of the civil servants are locals (86%) and foreigners (14%)

Number of civil servants selected by job rank, 2015



SS1 - Support Staff Grade 1
GS3 - Officer Grade 1
CS 13-2 -
MS 1 - Senior Officer Grade 1
GS 2 - Asst Officer Grade 2
GS 4 - Officer Grade 2

CS 11-2 -
MS2 - Senior Officer Grade 2
CS 2 -
MS 3 - Assistant Director

HEALTH

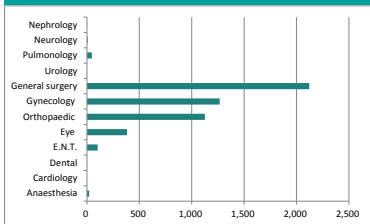
	2006	2007	2008	2009	2010	2011	2012	2013	2014	2015
Number of Doctors in Male'	211	259	260	204	219	na	na	na	286	350
Number of Doctors in Atolls	207	293	355	322	306	na	na	na	418	456
Inpatients										
Indhira Gandhi Memorial Hospital (IGMH)	13,455	12,488	14,041	13,752	13,568	13,996	13,935	13,058	12,590	12,720
Average Duration of Stay	5.4	5.6	5.8	5.8	5.9	5.8	5.7	5.5	6.1	5.6
Average Occupancy Ratio	83.5	74.8	84.5	84.4	80.7	82.6	76.8	71.4	78.4	72.5
No. of Thalasemia Cases registered	604	632	669	694	716	747	769	787	814	836
No. of New Thalasemia Cases	25	28	37	25	22	31	22	18	27	22
No. of Tuberculosis Cases Under Treatment	175	188	201	154	131	126	120	165	127	147

Note: Inpatients at the public hospitals in Male' do not show the full picture, as data on the major private hospital is not available

60
Traditional Birth Attendant495
Community Health Personnel429
Paramedical Staff2,302
Total Nurses806
Total Doctors

In-patients at the Indira Gandhi Memorial hospital, (IGMH) the Government hospital in Male' increased by 1 percent during 2015 when compared to 2014 .

Patients by Type of Surgical Intervention, 2015



From 2009 -2015 no case of **Filaria** has been registered.

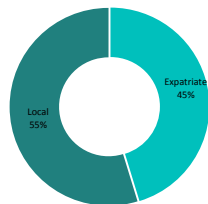
Registered
Thalassaemia cases
2015 **836**

Total Deaths
(Thalassaemia cases)
2015 **3**

New Cases
(Thalassaemia cases)
2015 **22**

Newly detected Tuberculosis cases, 2015 amounted to 153, out of which the highest recorded amount was from age group 45 and over with 57 cases.

Percentage of Local and Expatriate health personnel, 2015



Total Number of patients consulted by Orthodontist
(Dental Services by IGMH Dental Care Services) **784**

Total Number of patients consulted by
Dental Surgery (Dental Services by IGMH
Dental Care Services) **12,390**

EDUCATION



	2006	2007	2008	2009	2010	2011	2012	2013	2014	2015
Student Enrolment in Maldives	100,241	97,131	93,433	89,841	87,600	86,946	86,510	86,096	87,083	88,341
Government Schools	82,177	79,439	75,377	71,729	68,004	64,377	62,151	59,560	59,914	60,841
Private Schools	8,373	7,340	7,528	8,106	8,687	10,509	11,957	13,302	14,149	14,191
Community Schools	9,691	10,352	10,528	10,006	10,909	11,826	12,402	13,234	13,020	13,309
Student Enrolment by Level										
Pre - Primary Enrolment (NURS, LKG, UKG)	14,325	14,851	15,536	16,126	17,623	17,885	22,049	22,473	22,823	23,412
Primary Enrolment (Grades 1 - 7)	54,692	50,270	46,994	44,530	41,955	40,435	38,638	39,408	40,499	42,137
Lower Secondary Enrolment (Grades 8 - 10)	28,966	29,417	28,164	26,120	24,588	22,788	21,444	19,876	18,925	18,096
Higher Secondary Enrolment (Grades 11 - 12)	2,156	2,486	2,651	2,920	3,243	5,604	4,237	4,138	4,552	4,380
Special Classes **	102	107	88	145	191	234	142	201	284	316
Student / Teacher Ratio	15	14	12	12	11	12	11	10	10	10
Teachers	6,656	6,992	7,534	7,807	8,012	7,070	7,830	8,223	8,388	8,817
Male	2,696	2,808	2,989	3,026	3,080	2,809	3,114	3,225	2,991	3,038
Female	3,960	4,184	4,545	4,781	4,932	4,261	4,716	4,998	5,397	5,779
Male*	1,598	1,582	1,698	1,698	1,757	1,429	1,650	1,878	2,021	2,258
Atolls	5,058	5,410	5,776	6,109	6,255	5,641	6,180	6,345	6,367	6,559
Local	4,454	4,611	4,974	5,361	5,525	4,844	5,321	6,029	5,835	6,368
Foreign	2,202	2,381	2,560	2,446	2,487	2,226	2,509	2,194	2,553	2,449
Trained	5,137	5,250	5,745	6,222	6,534	6,027	6,708	7,513	7,267	7,626
Untrained	1,519	1,742	1,789	1,585	1,478	1,789	1,122	710	1,121	1,191
Gross Primary Enrolment Ratio	120	112	110	101	106	101	102	99	107	106
Gross Lower Secondary Enrolment Ratio	122	125	124	111	117	108	113	95	109	109
Gross Higher Secondary Enrolment Ratio	14	22	16	18	21	36	30	27	35	35
Net Primary Enrolment Ratio	104	99	96	95	96	96	94	94	99	104
Net Lower Secondary Enrolment Ratio	70	69	69	88	84	84	81	92	82	87
Net Higher Secondary Enrolment Ratio	9	4	6	14	17	17	19	24	24	53
Enrolment by Sex										
Both sexes	100,241	97,131	93,433	89,841	87,600	86,946	86,510	86,096	87,083	88,341
Male	51,183	49,435	47,738	45,891	44,882	44,358	44,420	43,884	44,511	45,207
Female	49,058	47,696	45,695	43,950	42,718	42,588	42,090	42,212	42,572	43,134
Male*	29,345	29,777	27,007	25,876	25,565	25,064	26,583	27,204	28,507	30,361
Atolls	70,896	67,354	66,426	63,965	62,035	61,882	59,927	58,892	58,576	57,980
Educational Institutions	349	342	362	375	375	381	408	456	455	459
Male*	22	22	23	24	24	25	27	36	37	38
Atolls	327	320	339	351	351	356	381	420	418	421

** students enrolled in special classes, for children with special needs

235 community schools were converted to government schools in 2025 due to educational policy change

88,341
Total number of students enrolled



34%
Students enrolled in schools in Male'

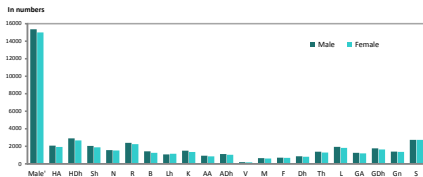


8,817
Total number of teachers



During 2015 out the total number of students enrolled, 23,412 students in Pre-primary, 42,137 in Primary, 18,096 in lower secondary, 4,380 in higher secondary and 316 students in special classes.

Student enrolment in Male' and Atolls by sex, 2015



66% of students are enrolled in atolls, with highest number of students (1,059) in Haa.Dhal atoll and lowest in Vaavu Atoll (43).



Literacy Rate, Republic, (Mother Tongue)
Census 2014



97.4%

98.0%



Student enrolment by education level and sex, 2015

	GROSS	NET
Primary (1 - 7)	105.5	104.5
Lower Secondary (8 - 10)	109.1	86.6
Higher Secondary (11 - 12)	35.3	53.3

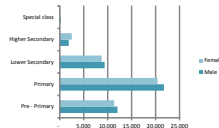


Number of Schools, 2015

213 (Government)
122 (Private)
124 (Community)

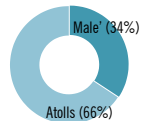
46% are government schools with 69% of student enrollment

Student enrolment by Education Level and Sex, 2015



More girls than boys are enrolled in the higher secondary education level only.

Student enrolment, 2015



LAW & ORDER

	2005	2006	2007	2008	2009	2010	2011	2012	2013	2014	2015
No. of cases logged with Police	8,230	8,560	11,452	17,674	19,259	16,994	17,803	20,512	21,885	18,193	16,363
No. of Cases dealt by Judicial Courts	12,107	14,084	13,820	12,921	15,997	15,036	14,710	14,232	16,189	18,902	18,101
Cases handled by the High Court											
Cases logged	195	269	263	340	415	280	342	371	401	365	413
Cases dealt	187	176	227	227	401	180	328	560	389	414	329
Cases awaiting trial	94	187	223	337	351	452	466	277	289	238	323
Number of Detainees											
Both Sexes	na	na	na	5,556	5,081	4,141	5,279	6,339	6,981	6,983	5,827
Male	na	na	na	5,353	4,913	4,002	5,110	6,115	6,706	6,709	5,547
Female	na	na	na	203	168	139	169	224	275	274	280

16,363

Logged Cases (Total), 2015

11,289

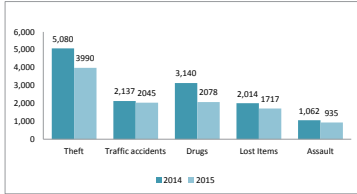
Logged Cases (Male), 2015

5,074

Logged Cases (Atolls), 2015



Logged Cases, 2015



In 2015 highest number of logged cases are about Theft (28%) and Narcotic drug cases (13%).

Out of 935 assault cases logged, 195 were by group of persons.



Logged cases of sexual offence increased by **12%**

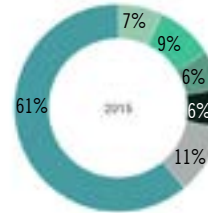
The overall drug related cases logged have declined by 34% in 2015 when compared to 2014. Most of the drug related cases are on drug use (60%) followed by Possession (30%)



Domestic violence cases increased nearly two folds, between 2014 - 2015 from 186 to 338 cases.



In 2015 a total of 5,827 persons were detained by police due to reported crimes. 95% of detainees were males and 71% were males in youth age-groups 18-34 years.



LOGGED CASES OF DEATH

■ Homicide ■ Sexual ■ Drug-related cases
■ Traffic accidents ■ Assault ■ Other

FISHERIES & AGRICULTURE

FISHERIES AND AGRICULTURE

	2005	2006	2007	2008	2009	2010	2011	2012	2013	2014	2015
Total Catch ('000 metric tons)	186	184	144	133	117	122	121	120	130	129	127
Growth in Fish Catch (%)	17.3	(1.0)	(21.7)	(8.0)	(11.9)	4.7	(1.1)	(0.7)	8.2	(0.9)	(1.0)
Composition of Fish Catch: (in metric tons)											
Total	185,980	184,158	144,169	132,574	116,736	122,175	120,836	120,001	129,843	128,683	127,352
Skipjack	132,060	138,458	97,342	87,072	66,189	73,721	57,672	53,392	74,422	68,522	69,244
Yellow fin	24,571	22,954	24,415	23,769	20,733	21,835	35,575	44,977	47,146	49,101	51,472
Other Tuna Related Species	8,302	5,718	7,100	6,699	8,876	7,124	4,947	2,538	1,664	3,924	2,218
Other Marine Fish	21,047	17,029	15,312	15,034	20,938	19,495	22,642	19,094	6,611	7,136	4,417
No. of Fisherman	NA	NA	NA	NA	NA	NA	NA	9,973	9,284	8,596	7,909
Imports of Fresh Agricultural Crops Mainly Produced in Maldives (in '000 MVR)	NA	NA	124,158	139,514	138,968	152,526	186,677	240,438	276,241	302,003	330,504

127.4 ('000 metric ton)

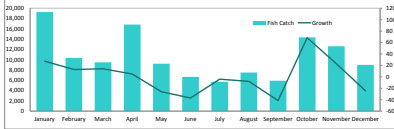
Total Fish Catch, 2015

7,909

Total Registered Fisherman, 2015

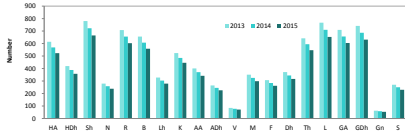


Monthly Fish Catch and month-on month Growth, 2015



Out of the total fish catch 54.4 percent was skipjack tuna and 40.4 percent was yellowfin tuna during 2015.

Number of fisherman by Atolls, 2013 - 2015



During 2015, the number of Fisherman registered declined by 7.9 percent, when compared to 2014.

Percentage share of fish catch by fishing method, 2015



“During 2015, 330,503,716 MVR have been spent on imports of Agricultural crops mainly produced in the Maldives”

During 2015 fish catch totaled to 127,352 metric tons. This showed a decline of 1.3 percent in the fish catch compared to 2014.

TOURISM

	2006	2007	2008	2009	2010	2011	2012	2013	2014	2015
No. of Tourist Resorts (Including Marinas)	88	91	94	97	97	101	105	109	111	115
Tourist Arrivals	601,923	675,889	683,012	655,852	791,917	931,333	958,025	1,125,202	1,204,857	1,234,248
Growth in Tourist Arrivals (%)	52.3	12.3	1.1	-4.0	20.7	17.6	2.9	17.5	7.1	2.4
Beds in operation (annual average)	16,244	17,533	19,081	20,137	21,701	24,493	25,062	26,101	26,963	27,748
Total Bed Capacity (registered)	20,505	22,187	23,464	24,978	25,709	26,896	28,120	30,133	31,673	34,105
Resorts (including marinas)	17,712	18,938	19,860	20,942	21,350	22,120	22,889	23,791	24,031	24,877
Hotels	713	836	1,110	1,368	1,449	1,603	1,627	1,708	1,704	1,648
Guest Houses	481	490	400	462	476	659	1,101	1,918	3,199	4,641
Safari Vessels	1,599	1,923	2,094	2,206	2,434	2,514	2,503	2,716	2,739	2,939
Increase in Bed Capacity of Resorts % (over previous yr)	2.39	6.92	4.87	5.45	1.95	3.61	3.48	3.94	1.01	3.52
Bed Capacity Utilization Rate (%) (Resorts & Hotels) ^{1,2}	81.4	82.8	78.3	70.2	75.6	73.1	70.4	74.0	74.1	69.0
Tourist Bed-nights('000)	4,826	5,293	5,451	5,147	5,986	6,529	6,451	7,041	7,290	6,976
Increase in Tourist Bed-nights	46.2	9.7	3.0	-5.6	16.3	9.1	-1.2	9.1	3.5	-4.3
Average Duration of Stay (days)	8.0	8.5	8.8	8.6	7.6	7.0	6.7	6.3	6.1	5.7
Tourism Tax (In Million MVR) ² / (Revised Estimates)	495.7	547.3	566.6	531.4	597.3	750.8	804.7	861.6	804.8	0.5
Tourism Revenue (In Million MVR) (Revised Estimates)	1,777.0	2,216	1,970	1,430	1,704	2,568	3,390	4,123	5,622	6,738
Tourism Expenditure (In Million MVR) (Revised Estimates)	100.8	108.2	93.3	56.6	46.9	33.7	52.6	33.1	49.6	89.3
Tourism Contribution to GDP (%)	25.8	25.7	23.6	23.6	25.4	25.6	24.9	25.9	25.5	23.9

^{1,2} From 2010 onwards Includes resorts/hotels/guest houses & safari vessels

² Tourist tax terminated from end of Nov 2014 with an amendment to Maldives Tourism Act.

40.5
% Share of Tourism Revenue to government revenue

5.7
Average Duration of stay (days)

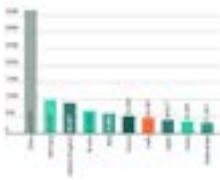
34,105
Registered Bed Capacity

115
Total Resorts Including Marinas

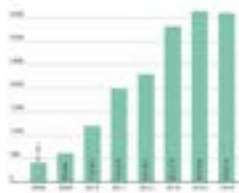
1,234,248
Tourist Arrivals



Top ten tourism markets, 2015



Chinese tourist arrival market, 2008 - 2015



Chinese tourist arrivals increased from 41,511 in 2008 to 359,514 in 2015, showing increase in chinese market share from 6% to 29% over these seven years.

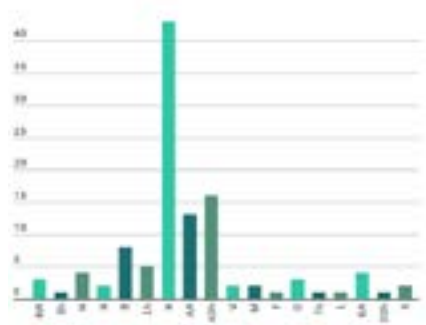
During 2014 to 2015, tourist arrivals grew by 2.4 percent while tourist bed nights declined by 4.3 percent. In 2015 a total of 1,234,248 foreign tourists visited Maldives.

Number of Establishments by type, 2015



Guest houses are highest in numbers and they account for 13% of the bed capacity of tourist accommodation establishments. Resorts have 73% of bed capacity.

Number of resorts by Atoll, 2015



By the end of 2015, all atolls except H.Dh and Gn Atoll had a resort. In terms of bed capacity, 60% is concentrated in the three atolls Kaafu (37%), A.Dh (16%) and AA (9%) closer to the capital Male'.

TRANSPORTATION & COMMUNICATION

	2006	2007	2008	2009	2010	2011	2012	2013	2014	2015
Aircraft Movement at Male' International Airport										
Total Number of International Flights	10,470	12,645	13,297	13,782	16,866	19,435	19,282	22,106	23,821	23,488
Passenger Movement of International Flights	1,572,345	1,782,481	1,774,577	1,792,493	2,173,600	2,409,118	2,424,918	2,863,806	3,133,037	3,174,017
Passenger Movement of Domestic Flights	716,206	809,595	845,357	823,117	1,041,204	1,144,785	796,519	1,366,833	1,343,649	1,642,638
Registered Vehicles / Vessels										
Sea Transport										
Number of Yacht Dhoni	88	101	113	118	124	130	136	140	151	151
Number of Launches	1,210	1,428	1,682	1,841	1,968	2,104	2,253	2,378	2,540	2,794
Number of Boats	416	456	480	494	508	523	537	561	567	600
Land Transport										
Number of Motor Cars	2,372	2,727	3,002	3,219	3,348	3,510	3,708	3,994	4,495	5,269
Number of Motor Cycles/Auto Cycles	22,113	26,777	31,414	35,794	38,860	42,570	46,409	50,778	56,503	66,527
Phone Calls ('000 minutes)										
International telephone calls	12,037	26,991	120,906	140,386	135,384	108,744	211,865	249,201	265,736	227,781
National telephone calls	123,281	122,725	95,124	86,305	77,503	75,974	69,830	66,557	41,974	59,161
Mobile calls	216,318	219,839	969,281	1,165,371	1,241,516	1,094,741	1,468,840	1,571,320	1,687,209	1,608,503
Phone lines										
Fixed telephone lines	32,181	33,063	46,925	49,025	48,019	24,084	23,140	22,557	21,478	21,911
Pay phones	751	732	714	612	572	207	128	129	128	122
Mobile phone subscription	271,053	313,539	435,627	457,770	494,351	527,844	560,547	625,161	665,818	739,790
Post-paid	29,038	29,479	55,282	68,360	71,803	72,751	71,463	73,751	78,656	87,051
Pre-paid	242,015	284,060	380,345	389,410	422,548	455,093*	489,084	551,410	587,162	652,739

Considerable increase in 2008 mobile & international minutes as call minutes from pre-paid phones were not included in previous years
From 2011 onwards, (as nationwide mobile phone services were widely used) just the total number of pay phones were collected.

2,794
No. of Launches

600
No. of Boats

151
No. of Yacht Dhonis

5,269
No. of Cars



During 2015, at Ibrahim Nasir International Airport 2,285,200 passengers flew in, 32,758,397 kg of cargo and 227,638 kg of mails came in through 95,836 flights. Of those 25% were international flights and 67% of passengers arrived from international flights.

During 2015, at Hanimaadhoo International Airport 52,366 passengers flew in, through 1,854 flights. Out of these 2,248 passengers were from 62 international flights.

During 2015, at Gan International Airport 68,717 passengers flew in, through 19,706 flights. Of these 1,841 passengers were from 224 international flights.

PASSENGER MOVEMENTS AT DOMESTIC AIRPORTS, 2015



21,911 Fixed Telephone Lines



251,022 Internet Subscriptions



739,790 Mobile Subscriptions



122 Pay Phones

PUBLIC FINANCE

	2006	2007	2008	2009	2010	2011	2012	2013	2014	2015
<i>revised</i>										
(In million rufiyaa)										
Revenue and Grants	6,154.1	7,571.2	7,456.5	5,734.8	6,546.9	9,904.5	10,138.1	11,900.7	15,164.2	17,700.6
Revenue	5,286.7	6,527.2	6,939.5	5,313.3	6,392.4	9,172.1	9,771.4	11,783.1	14,999.0	16,618.1
Tax Revenue	2,370.3	2,905.1	3,366.8	2,732.0	2,931.0	4,893.0	6,880.1	8,872.8	10,837.9	12,145.0
Non-tax Revenue ^{1/}	2,916.3	3,622.1	3,530.4	2,567.4	3,412.0	3,744.7	2,843.3	2,642.1	4,037.0	4,331.8
Grants ^{2/}	867.4	1,044.0	517.0	421.5	154.5	732.4	366.7	117.7	165.3	1,082.4
Expenditure and Net Lending	6,948.1	8,200.9	10,176.0	10,979.6	10,874.0	12,264.7	13,110.0	13,530.8	16,417.2	21,286.1
Total Expenditure	7,066.2	8,325.4	10,342.4	11,130.4	11,055.3	12,663.7	13,200.2	13,666.3	16,539.4	21,299.7
Current Expenditure	5,607.8	6,560.1	7,463.2	8,764.9	8,428.1	9,075.7	10,316.5	11,573.2	13,960.0	16,234.9
Capital Expenditure	1,458.4	1,765.3	2,879.2	2,365.5	2,627.2	3,588.0	2,883.7	2,093.0	2,579.4	5,064.8
Net Lending	(118.1)	(124.5)	(166.4)	(150.8)	(181.3)	(399.0)	(90.2)	(135.5)	(122.2)	(13.6)
Overall Balance (including grants)	(794.0)	(629.7)	(2,719.5)	(5,218.6)	(4,268.1)	(2,360.2)	(2,971.9)	(1,765.5)	(1,375.1)	(3,599.1)
Financing	794.0	629.7	(1,224.0)	(3,206.3)	(4,268.1)	(2,360.1)	2,971.9	(1,765.5)	1,375.1	3,599.1
Foreign financing	529.2	615.1	747.7	1,006.1	1,228.3	968.0	772.2	472.6	(370.6)	(438.9)
Domestic financing ^{3/}	264.8	14.6	(1,971.7)	(4,212.4)	3,039.8	1,392.1	2,199.7	1,293.0	1,745.8	4,038.0
Overall Balance (excluding grants)	(1,661.4)	(1,673.7)	(3,236.5)	(5,640.1)	(4,481.6)	(3,092.6)	(3,338.6)	(1,883.2)	(1,540.4)	(4,681.5)
Revenue as percent of GDP	28.0	29.2	25.7	19.3	21.5	25.6	25.3	27.4	31.5	31.5
Tax Revenue as percent of GDP	12.6	13.0	12.5	9.9	9.9	13.7	17.8	20.7	22.8	23.0
Non-tax Revenue as percent of GDP	15.4	16.2	13.1	9.3	11.5	10.5	7.3	6.2	8.5	8.2
Total Expenditure as percent of GDP	37.4	37.3	38.3	40.5	37.2	35.4	34.1	31.8	34.8	40.3
Current Expenditure as percent of GDP	29.7	29.4	27.5	31.6	28.2	25.3	26.5	27.8	29.6	34.5
Capital Expenditure as percent of GDP	7.7	7.9	10.7	8.6	8.8	10.0	7.5	4.9	5.4	9.6
GDP (current prices in millions MVR) ^{4/}	18,876.1	22,348.8	27,007.5	27,510.5	29,739.8	35,768.3	38,693.0	42,952.2	47,589.6	52,787.5

^{1/} Includes capital revenue^{2/} Excludes grants for direct expenditure by donors^{3/} Primary reflects net borrowing from Maldives Monetary Authority^{4/} Revised in October 2016

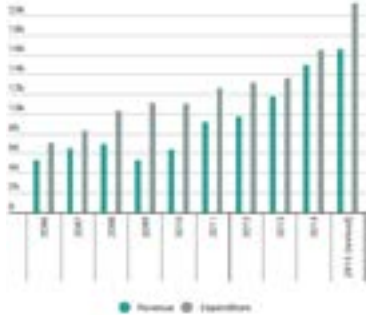
3,599.1
In million MVR
Overall Deficit 2015 (revised)
Including Grants

17,700.6
In million MVR
Total Revenue & Grants 2015
(revised)

21,286.1
In million MVR
Total Expenditure & net landing
2015 (revised)



Government Revenue & Expenditure 2015



Tax Revenue 2014 (Actuals)



Total Expenditure 2015, Revised (In Million MVR)

Current	16,234.9
Capital	5,064.8

Total Revenue & Grants 2015, Revised (In Million MVR)

Current Revenue	16,476.7
Capital Revenue	141.1
Grants	1,082.4

Government revenue and grants increased by 16.7 percent during 2014-2015 reaching MVR 17.7 billion in 2015. Tax revenue increased by 12 percent during the period 2014 - 2015.

Government Expenditure increased by 28.8 percent during 2014 - 2015 reaching MVR 21.3 billion in 2015. In 2015, current expenditure accounted for 76% of total expenditure with 41% (MVR 6.6 billion) on salaries and wages and other allowances of employees.

“During 2015, out of the Total Revenue collected by MIRA, 46 percent accounts for goods & services tax, where 21 percent comes from Business Profit Tax followed by 9 percent from Tourism land rent.

MONEY & BANKING

<i>(In million Rufiyaa, end of period)</i>	2006	2007	2008	2009	2010	2011	2012	2013	2014 ^{1/}	2015
Net foreign assets	952.1	-510.5	-1,732.2	-1,338.7	685.6	2,873.0	5,258.3	8,813.4	12,541.0	12,220.5
Central bank	2,814.0	3,857.0	3,022.0	3,071.7	4,067.6	4,725.5	4,241.0	5,308.0	9,110.0	8,227.3
Other depository corporations	-1,861.9	-4,367.5	-4,754.2	-4,410.4	-3,382.0	-1,852.5	1,017.3	3,505.4	3,431.1	3,993.2
Domestic claims	9,503.5	13,748.4	18,590.1	21,187.4	22,181.2	24,688.4	23,893.6	24,959.2	25,984.4	30,170.0
Net claims on central government	552.9	216.4	896.3	4,062.7	5,380.7	6,830.9	7,649.6	8,637.7	9,265.4	11,372.7
Claims on other sectors	8,950.6	13,532.0	17,693.8	17,124.7	16,800.5	17,857.5	16,244.0	16,321.5	16,719.1	18,797.3
of which Claims on private sector	8,371.7	12,509.1	16,218.5	15,553.8	15,191.0	16,090.5	14,505.4	14,637.9	15,096.8	17,000.9
Broad money	8,008.7	9,938.8	12,110.1	13,615.5	15,884.0	19,062.2	20,001.6	23,676.7	27,161.2	30,852.9
Narrow money	3,707.6	4,448.8	6,097.5	7,440.0	7,538.7	8,192.4	8,428.3	10,415.8	11,196.7	13,317.1
Quasi money	4,301.1	5,490.0	6,012.6	6,175.5	8,345.2	10,869.9	11,573.3	13,260.9	15,964.5	17,535.7
Private sector loans and Advances	8,184.8	12,486.4	16,121.8	15,403.6	15,045.2	15,970.3	14,520.0	14,533.5	14,927.8	16,916.4
Agriculture	17.2	38.0	38.8	31.3	28.7	25.0	15.9	10.3	7.9	4.5
Fishing	641.3	1,182.9	1,088.8	960.5	896.0	772.3	551.9	546.6	399.8	454.8
Manufacturing	140.0	490.8	581.0	532.0	493.1	492.0	324.1	316.5	199.2	176.7
Construction	525.9	1,053.7	1,368.9	1,264.0	1,119.7	1,187.4	1,205.8	1,320.7	1,735.5	2,441.4
Tourism	4,297.9	6,536.1	9,317.0	9,148.9	8,698.3	9,170.3	8,326.8	7,430.1	6,476.0	6,743.7
Commerce	1,655.4	1,299.3	1,837.3	1,587.9	1,774.3	2,131.1	2,144.3	2,551.7	2,515.5	2,917.7
Transport and Communication	367.3	550.6	786.7	814.5	677.7	614.0	480.0	520.0	613.1	889.6

^{1/} Revised

 **17,535**
In million MVR
Quasi Money (end of period 2015)

 **13,317.1**
In million MVR
Narrow Money (end of period 2015)



At the end of 2015, the Net Foreign Assets of the banking system declined by 9.7 percent compared to 2014 which reached MVR 8,227.3 million.

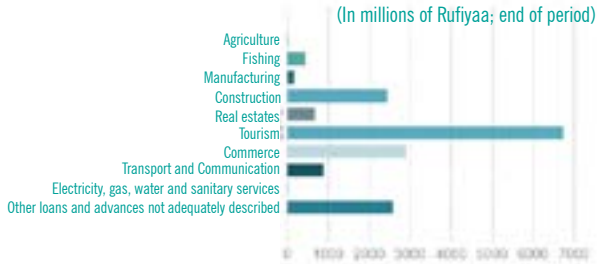
During 2015, a total of 16,916.4 million MVR were issued as private sector loans and advances by the commercial banks. Of these 6,743.7 million MVR (40 percent) were for tourism.

At the end of 2015, the total money supply measured by M2 was recorded at million MVR 30,852.9

Tourism Sector Loans & Advances, 2015 (in million MVR, end of period)

New resort development	2,594.5
Renovation of resorts	1,039.9
Yacht safari buildings	36.3
Working capital	3,033.9
Guest house	39.2

Other Depository Corporations Private Sector Loans & Advances by Economic Group, 2015



FOREIGN TRADE & BALANCE OF PAYMENTS

	2006	2007	2008	2009	2010	2011	2012	2013	2014	2015
EXPORTS										
Total exports (f.o.b value '000 in MVR)	1,735,722	1,384,589	1,617,452	981,318	949,798	1,770,330	2,483,060	2,558,635	2,227,693	2,215,412
Total exports (f.o.b value in '000 US\$)	135,603	108,171	126,363	76,665	74,203	114,882	161,552	166,037	144,655	143,858
Marine Products	1,709,989	1,357,222	1,591,939	958,408	913,242	1,717,121	2,438,537	2,517,185	2,177,115	2,158,075
Other Products	25,733	27,366	25,512	22,910	36,555	53,209	44,523	41,450	50,436	57,337
Total (in %)										
Marine products	99	98	98	98	96	97	98	98	98	97
Other products	1	2	2	2	4	3	2	2	2	3
% Change in exports	30	-20	17	-39	-3	86	40	3	-13	-1
IMPORTS										
Total Imports (c.i.f value in '000 MVR)	11,859,521	14,032,513	17,760,114	12,368,528	14,017,488	20,486,217	23,884,654	26,634,885	30,649,233	29,147,779
Total Imports (c.i.f value in '000 US\$)	926,525	1,096,290	1,387,509	966,291	1,095,116	1,329,411	1,553,979	1,728,416	1,990,210	1,892,713
% Change in imports	24	18	27	-30	13	46	17	12	15	-5
EXCHANGE RATE										
Average Exchange Rate (MVR per US\$)	12.80	12.80	12.80	12.80	12.80	15.41	15.37	15.41	15.40	15.40

BALANCE OF PAYMENTS

(In million US\$)	2011(rev)	2012(rev)	2013(rev)	2014(rev)	2015(rev)
	Oct-15	Oct-15	Mar-16	Mar-16	Mar-16
Balance on goods	-1,370.4	-1,261.4	-1,372.0	-1,660.0	-1,654.8
Current Account Balance	-383.4	-184.5	-127.4	-117.8	-295.5
Balance on services	1,523.5	1,608.2	1,895.6	2,222.1	2,072.0
Services (credit)	2,104.5	2,178.9	2,592.1	3,015.2	2,901.3
Services (debit)	-581.0	-570.6	-696.6	-793.1	-829.3
Financial Account	416.4	187.7	63.5	537.7	361.3
Current Account as a percentage of GDP	-15.6	-7.4	-4.6	-3.9	-8.6
Financial Account as a percentage of GDP	17.0	7.5	2.3	17.6	10.6
GDP (in millions of USD at current prices)	2,455	2,509	2,785	3,086	3,423

2,215.4
fob million MVR
Total Exports, 2015

29,147.8
cif million MVR
Total Imports, 2015



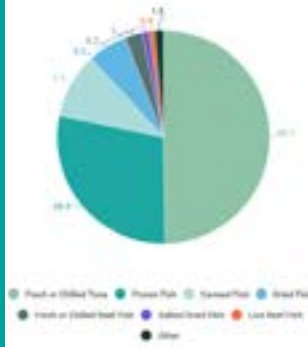
Imports by Continents, 2015



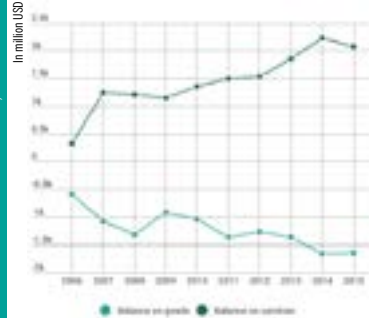
The value of Imports in 2015 a declined by 5 percent when compared to 2014. The total imports amounted to MVR (cif) 29,147.8 million. Singapore was the major country (17.1%) followed by U.A.E (16.7%).

During 2015, 97 percent of the total export value accounted for marine products, of which 50 percent was fresh or chilled tuna.

Marine Products Exports (in MVR), 2015



Balance on Goods and Services, 2006 - 2015



The value of exports is declined by 1 percent in 2015 compared to 2014, reaching MVR 2,215.4 million (fob). Thailand was the major destination for exports (25.4 percent), followed by Sri Lanka (12 percent), in 2015.

NATIONAL ACCOUNTS

(Gross Domestic Product - G.D.P at market prices)

	2005	2006	2007	2008	2009	2010	2011	2012	2013	2014 ^{1/}	2015 ^{1/}
G.D.P at 2003 Constant Market Prices (million MVR)	13,885	16,647	18,340	20,664	19,564	20,966	22,792	23,361	24,459	25,926	26,664
G.D.P at 2003 Constant Market Prices (million US\$)	1,085	1,301	1,433	1,614	1,528	1,638	1,781	1,825	1,911	2,025	2,083
G.D.P Growth Rates	-8.1	19.9	10.2	12.7	-5.3	7.2	8.7	2.5	4.7	6.0	2.8
GDP per Capita at 2003 Constant Market prices (MVR)	41,009	46,976	48,914	52,929	50,842	53,270	56,088	55,623	56,291	57,618	57,161
GDP per Capita at 2003 Constant Market Prices (US\$)	3,204	3,670	3,821	4,135	3,972	4,162	4,382	4,346	4,398	4,501	4,466
GDP at Current Prices (million US\$)	1,120	1,475	1,746	2,110	2,149	2,323	2,455	2,509	2,785	3,086	3,423
GDP at Current Prices (million MVR)	14,334	18,876	22,349	27,008	27,511	29,740	35,768	38,693	42,952	47,590	52,787
GDP per Capita at Current Prices (MVR)	42,333	53,267	59,606	69,177	71,493	75,563	88,021	92,127	98,853	105,765	113,163
GDP per Capita at Current Prices (US\$)	3,307	4,161	4,657	5,404	5,585	5,903	6,041	5,974	6,411	6,859	7,339

Published in 16 October 2016

^{1/} Revised in 16 October 2016

52,787
GDP, 2015

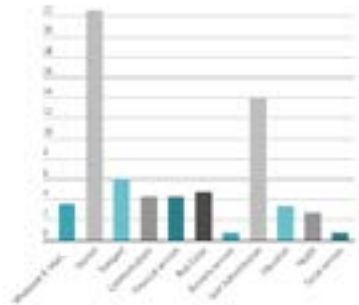
at current prices in Million MVR

26,664
GDP, 2015

at 2003 constant prices in Million MVR



Percentage Shares Of Gross Domestic Product (At Current Prices), By Kind of Activity

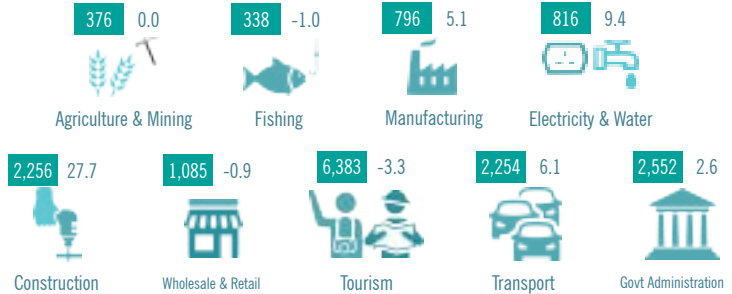


GDP per capita at current market prices for 2015 is estimated at USD 7,339.

GDP BY INDUSTRY

at constant prices

GDP Growth Rate



GDP at constant prices stood at 26,663.8 (In Million MVR) GDP growth rate was 2.8 percent in 2015, where tourism being the main industry which contributed 23.9 percent .

The highest growth rate was in communication sector with 7.3%.

PRICES

Consumer Price Index (CPI), June 2012 = 100	2006	2007	2008	2009	2010	2011	2012	2013	2014	2015
Total National CPI	60.7	64.8	72.6	75.9	80.6	89.7	99.4	103.2	105.4	106.4
% change in CPI (Inflation Rate) - National	2.7	6.8	12.0	4.5	6.2	11.3	10.9	3.8	2.1	1.0
Food and non- alcoholic beverages- National	46.5	54.1	64.4	64.7	69.6	83.4	98.1	105.2	105.9	106.4
% change in food and non-alcoholic beverages - National	4.0	16.2	19.1	0.5	7.5	19.9	17.6	7.2	0.7	0.5
Exchange Rate of US Dollars (end of each year)	NA	NA	NA	NA	NA	15.41	15.37	15.41	15.4	15.4
Fuel Prices (Open Market Rate) at year end	NA	10.3	7.0	7.7	8.2	15.7	16.2	16.1	12.0	11.0



0.95%

Inflation Rate (Republic)



1.37%

Inflation Rate (Male')



0.59%

Inflation Rate (Atolls)



Fuel Prices (end of 2015)

Petrol

11.00 MVR/Litre

Diesel

11.00 MVR/Litre

CPI Analytical Series, 2015

-0.47 %

Fish

3.52 %

Housing Rent

1.09 %

Total excluding Fish

0.90 %

Food & non-alcoholic
beverages excluding fish

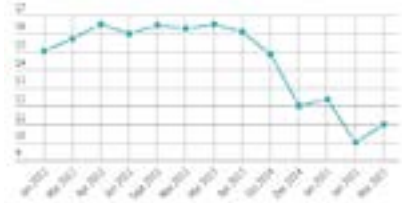
In April 2011, the exchange rate regime was changed from a fixed exchange rate regime to a band of 20 percent around a central parity of MVR 12.8 per US dollar

During the year 2015, most significant fall in the prices were recorded from transportation, by -2.33% due to the decline in the global fuel prices.

Consumer Price Index by Month, Republic, 2013 - 2015



Price Change in Fuel Oil (Diesel), 2012 - 2015



SOCIAL PROTECTION

SOCIAL PROTECTION					
	2011	2012	2013	2014	2015
Health Insurance					
No. of persons	103,828	275,175	285,877	302,104	317,545
Government Expenditure (MVR)	212,774,081	782,126,477	744,921,545	1,063,054,680	1,400,609,842
Single Parent Allowance					
No. of persons	7,145	8,545	9,230	7,260	8,279
Government Expenditure (MVR)	44,840,000	62,959,000	66,389,000	70,378,000	62,871,000
Foster Parent Allowance					
No. of persons	55	96	144	241	258
Government Expenditure (MVR)	1,242,500	648,500	1,180,500	1,807,000	2,464,500
Emergency Medical Welfare					
No. of persons	1,002	831	4,288	NA	5,682
Government Expenditure (MVR)	10,465,083	14,510,916	40,484,849	35,665,347	51,002,563
Disability Allowance					
No. of persons	3,560	4,408	4,876	5,601	6,176
Government Expenditure (MVR)	79,300,500	109,680,000	112,764,000	127,918,000	154,048,000

Universal Health Insurance Scheme named "Aasandha" was introduced in January 2012 and replaced the existing schemes "Madhana" and "Madhana Plus".

PENSION					
	2011	2012	2013	2014	2015
Basic Pension					
No. of persons	15,035	15,268	15,447	15,767	16,091
Government Contribution (MVR)	360,066,471	414,738,937	421,204,350	431,707,102	426,999,240
Retirement Pension					
No. of persons	177	293	425	646	895
Government Contribution (MVR)	7,817,514	21,452,252	25,887,907	35,973,669	48,839,670
Other Pension					
No. of persons	7,219	7,314	7,293	7,284	7,264
Government Contribution (MVR)	167,052,417	240,701,240	244,384,239	259,554,055	260,118,263
Senior Citizen Allowance					
No. of persons	-	-	-	16,198	16,561
Government Contribution (MVR)	-	-	-	471,311,711	524,547,328

Senior Citizen Allowance was introduced in February 2014

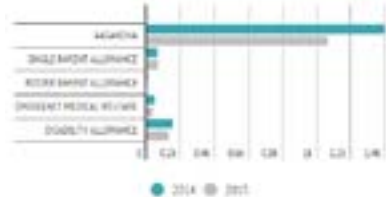
317,545 people

Total covered under Health insurance schemes, 2015

1,400,609,842 MVR

Expenditure on Aasandha Services 2015

Government Expenditure On Different Social Protection Schemes By Type, 2014 - 2015

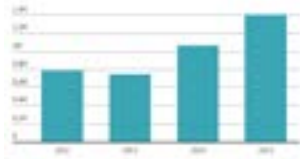


Expenditure on Disability allowance in 2015 shows an increase of 20 percent when compared 2014 while the allowance for single parents shows a decrease of 11 percent when compared to 2014.

Number of persons contributing to retirement pension scheme by gender and sector, 2015



Expenditure under Health Insurance Schemes, 2011 - 2015



Emergency medical welfare in 2015 have increased by 43 percent when compared to 2014

Number of beneficiaries under basic pension scheme, 2015



POVERTY

	2002/2003			2009/2010		
	Republic	Male'	Atolls	Republic	Male'	Atolls
Poverty & inequality measures (using Consumption Aggregate) 1/						
Median of Expenditure per person per day (Rf)	27	39	23	46	52	44
Headcount ratios (population below the defined poverty line) 2/						
Median of atoll expenditure per person per day in 2009-2010 (Rf 44)	66%	40%	75%	51%	44%	55%
Half the Median of Atoll expenditure per person per day in 2009-2010 (Rf 22)	21%	4%	27%	15%	12%	16%
International poverty line of USD 1.25 (\$-a-day poverty line used in MDGs)	9%	2%	12%	8%	7%	8%
International poverty line of USD 2	31%	9%	39%	24%	19%	27%
Gini Coefficient	0.41	0.35	0.40	0.37	0.38	0.36

Source: Household Income and Expenditure Surveys

1/ Consumption aggregate is derived by aggregating households' expenditures on goods and services so as to approximate the value of consumption achieved during the reference period. It excludes lumpy expenditures such as on weddings, housing constructions, Consumer Durables, actual rent paid, travel abroad for Hajj. Consumption aggregate is used to define the measure of welfare which is used for poverty analysis.

2/ Poverty lines for previous years have been adjusted to account for inflation.

POLITICAL PARTIES & ELECTIONS

POLITICAL PARTIES

	2011	2012	2013	2014	2015
Number of People Registered under Political Parties	122,671	130,928	135,587	137,800	NA
Money given by the Government to the Political Parties (MVR)	13,049,317	13,236,363	12,825,451	14,078,994	NA

ELECTIONS

	Presidential Election, 2008		Parliamentary Election, 2009	Local Council Election, 2011	Presidential Election, 2013		Parliamentary election, 2014
	First Round	Second Round			First Round	Second Round	
Expenditure (MVR)		61,599,485	22,069,177	44,840,130		76,487,272	25,929,972
Eligible voters	207,961	209,294	212,559		239,105	239,165	240,652
Number voted	177,802	181,204	167,911		208,504	218,619	189,640
Voter turnout	86%	87%	79%		87%	91%	79%



National Bureau of Statistics,
Ministry of Finance & Treasury
Male', Maldives.