



Clipper Ranger 1998



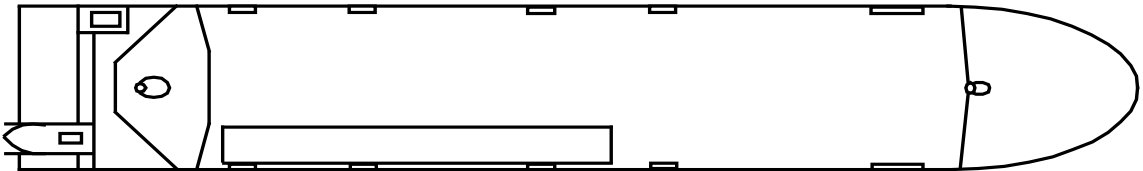
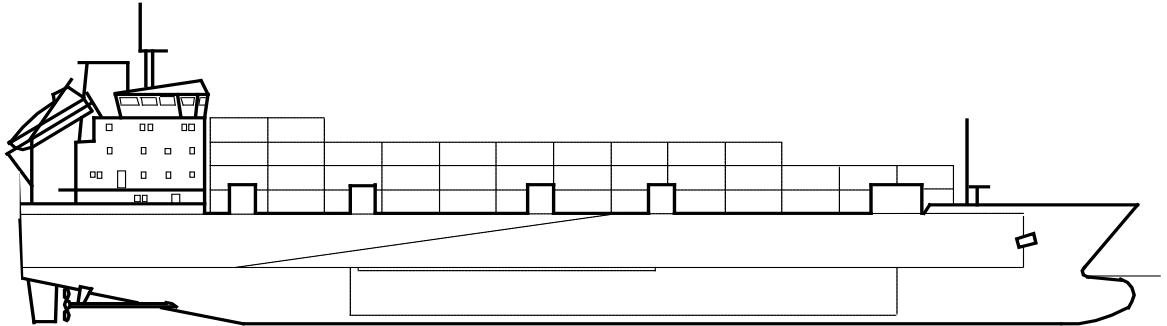
Clipper Ranger (1998)

IMO 9119402

Call Sign 2GFG4

Official number 743969

All details 'about' and 'without guarantee'



Name	Clipper Ranger	
Type	Ro-Ro	
Class	DNV	
Build	1997 – 1999, Astilleros de Huelva, Spain	
Flag	Douglas	
Port of registry	Isle of Man	
LOA	122.32 m	
Length between PP	112.20 m	
Breadth	19.80 m	
GT / NT	7,606 / 2,282	
Deadweight ¹	4,935 mt	
Displacement	Light	Loaded
	4,060 mt	9,818 mt
Summer Draught ¹	5.779 m	
Depth to	1st Deck	2nd Deck
	12.90 m	7.20 m
Suez Canal Certificate	GRT 8,278.8	NRT 6,694.57
Crew	18 persons	
Drivers	12 persons	

Summary lane	Tanktop Deck	205 lm	
	2nd Deck	455 lm	
	1st Deck	397 lm	
Total		1057 lm	
Lane width	Tanktop Deck	3.0 m	
	2nd Deck	3.0 m	
	1st Deck	2.9 m	
Free height	Tanktop Deck	5.0 m	
	2nd Deck	5.0 m	
Carrying capacity	Tanktop Deck	Uniform load - 5 mt/m2	
	- 628 m2	Total load 40' trailers - 40 mt	
		Mafi trailers 20' - payload 25 mt	
		Mafi trailers 40' - payload 50 mt	
		18 m road trailers - total weight 60 mt	
		Axle load - 17.5 mt	
		Bogie load - 35 mt	
		13.6 m trailers - 11 units	
	2nd Deck	Uniform load - 2 mt/m2	
	- 1,366 m2	Mafi trailers 20' - payload 25 mt	
		Mafi trailers 40' - payload 50 mt	
		18 m road trailers - total weight 60 mt	
		Axle load - 17.5 mt	
		Bogie load - 35 mt	
		13.6 m trailers - 30 units	
	1st Deck	Uniform load - 2 mt/m2	
	- 1,260 m2	Mafi trailers 20' - payload 25 mt	
		Mafi trailers 40' - payload 50 mt	
		18 m road trailers - total weight 60 mt	
		Axle load - 17.5 m	
		Bogie load - 35 mt	
		13.6 m trailers - 24 units	
Containers	Total weight 2716 mt	TEU – stack load 50 mt – 266 units	
	(depending on ship	FEU – stack load 75 mt – 126 units	
	Stability and cargo		
	mix)		
NB. Vessels currently			
have some deck			
sockets removed to			
optimise RoRo mode.			
Pole sockets for reefers	50 units		

Doors / ramps	At the aft of the vessel is located a Stern ramp with following characteristics: (pls see diagram at back of this description)		
	Length	10.0 m	
	Width	13.0 m at vessel hinge	
	Free drive space	Width	Hight
		6.0 m / 12.3 m	5.0 m
	Max load	60 mt	
	Axle load	17.5 mt	
Lifting platform	Between 2 nd Deck and Tanktop Deck		
	Length	18.8 m	
	Width	3.5 m	
	Max load	60 mt	
	Axle load	17.5 mt	
	Working speed	Loaded	Empty
		Appr. 9 m/min	Appr. 18 m/min
Fixed ramp	Between 1 st Deck and 2 nd Deck		
	Length	37.0 m	
	Width	3.3 m	
	Max load	60 mt	
	Axle load	17.5 mt	
Holds ventilation	14 times / hour in port		
Tanks capacities	Ballast water	2,400 m3	
	Fuel oil	700 m3	
	Diesel oil	100 m3	
	Lubrication oil	25 m3	
	Fresh water	110 m3	
Speed *	Maximum speed	16.0 knots	
	Service speed	15.5 knots	
	Economy speed	14.0 knots	
Daily fuel *	Main engines	Maximum speed	32.0 mt
Consumption	(IFO 380)	Service speed	30.0 mt
		Economy speed	23.0 mt
	Boilers (IFO 380)	At sea - 0.5 - 1.5 mt	
		In port - 2.0 - 2.5 mt	
	Aux. engine (Gasoil)	In port - 1.8 - 2.5 mt	
		* Speed and consumption figures based on max Beaufort 4 and calm sea state with no tidal effect. Indications are 'about' and 'without guarantee'	
Daily oil	Main engines		100%load-1.2g/kWh
Consumption	Aux. engine		100%load-0.5g/kWh
Daily water	Technical water	appr. 0.5 mt	
Consumption	Fresh water	appr. 6 - 7 mt	
Radio and navigational	Radar plants	ARPA NUCLEUS 6000 & NUCLEUS 5000	
Facilities	Satellite navigation	INMARSAT C	
	VHF radio	TRP-3000	

	Communication system	RADIOTELEX
	Auto pilot	RAUTHEON ELECTRONICS ANSCHUTZ, NAUTOPILOT D
	Echosounder	FURUNO FE 608
	Log	FURUNO DS 70
Heeling system	Automatic heel compensation	
Main engines	Make	Wärtsilä
	Type	9R32 LOW NOX
	Number	2
	Output	3,700 kW each
Gearbox	Type	Winchmann SV850-P480
	Number	2
	Propeller speed	154.64 RPM
Auxiliary engines	Make	Wärtsilä-Leroy Somer
	Type	SACMUD 2512VS4
	Number	2
	Output	600 kW each
Alternators	Type	LSAM 50 S3 BRUSH LESS
	Power rating	765 kVA; 612 kW; cos ϕ 0.8; 1,162 A
	Voltage	380 V; phase 3; insulation class H; 50HZ; 1,500 RPM
	Number	2
Shaft generator	Type	LSA M49.1 L 9 C 6814
	Power rating	750 kVA; 600 kW; cos ϕ 0.8; 1,139 A
	Voltage	380 V; phase 3; insulation class F
	Number	2
Propellers	Number	2 x pitch-controllable
	Diameter	3,800 mm
Rudders	Number	2
Steering gear	Type	SERVO-SHIP, sl, CYLINDER-SINGLE
	Electric power	30 kW
	Number	2
	Pump type	DENNISSON T6CO20
Bow thruster	Type	ULSTEIN, 150TV-D
	Power	600 kW x 1
Life boats	1 unit for 32 persons	
Anchors	Number	2
	Weight	4,060 kg each
Anchor chain	Diameter	56 mm
	Length (total)	522.5 m Number 2
Fire protection	CO2	Engine room, Central control room
	Water spray system	Tanktop Deck, 2 nd Deck
	Water fire protection system	2 x CM/EP 80/26; Q = 90 m ³ ; H = 60 m

All details about and given in good faith without guarantee, and with minor differences between sister vessels

Photographs Page 1



1

2

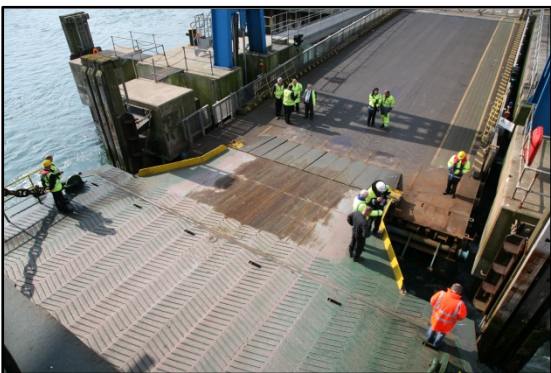
3

4

5

1. General view
2. General view
3. General view
4. General view
5. Aft view

Photographs Page 2



1

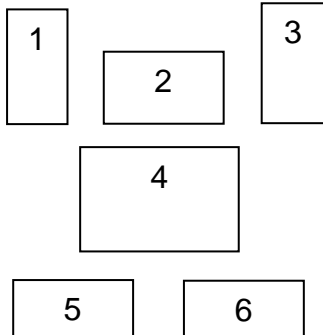
2

3

4

- 1. Weather deck
- 2. Stern door
- 3. Stern door
- 4. Stern door

Photographs Page 3



- 1. Drivers cabin
- 2. Bridge
- 3. Enclosed bridge wing
- 4. General view
- 5. Galley
- 6. View from bridge



CLIPPER RANGER
VALLETTA

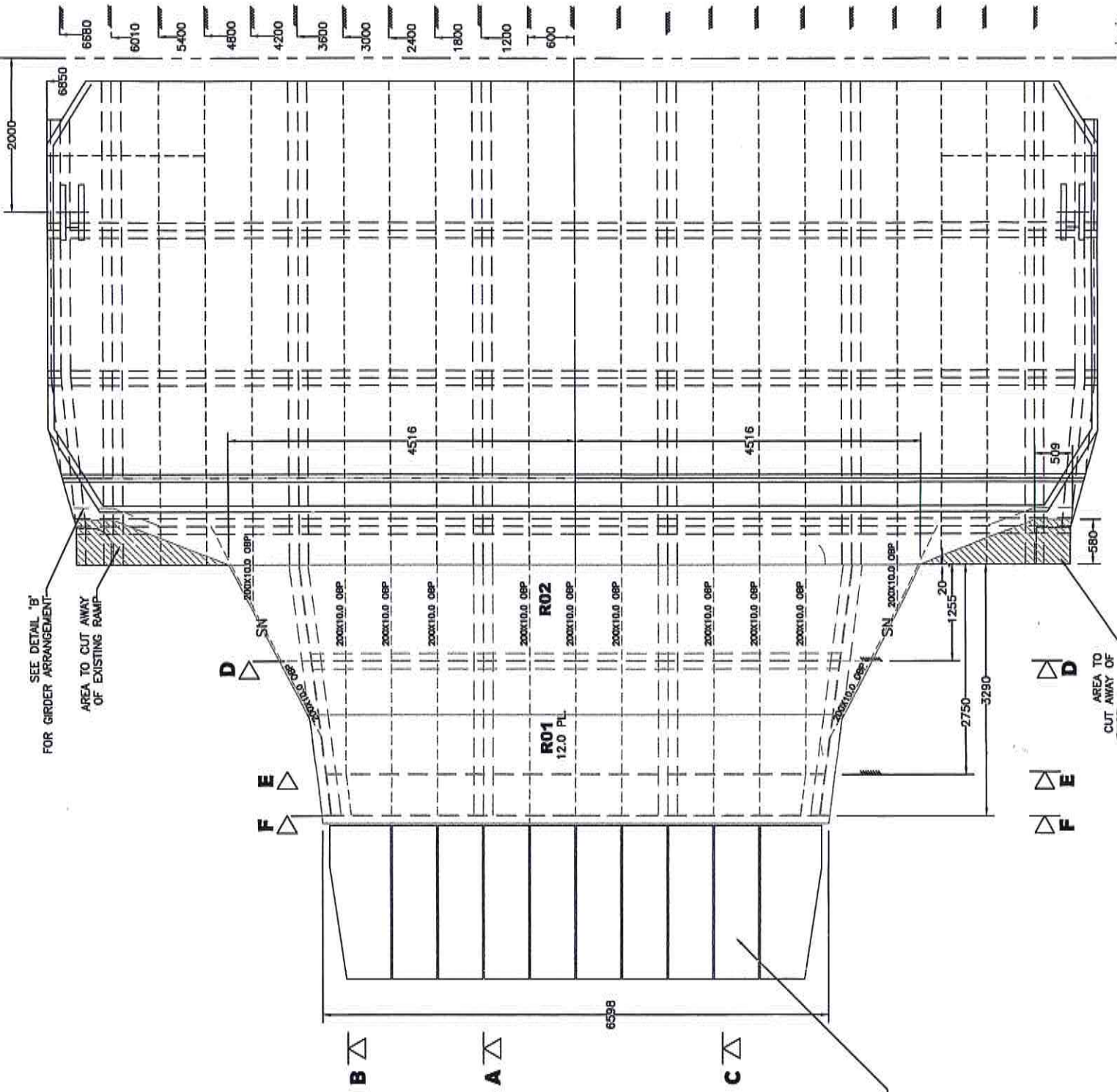
MAXWELL
FREIGHT SERVICES



Clipper Ranger

Stern door diagrams





SEE DETAIL 'B'
FOR GIRDER ARRANGEMENT

AREA TO CUT AWAY
OF EXISTING RAMP

D

E

F

B

A

C

R01
12.0 PL

R02

200x10.0 OBP

200x10.0 OBP

200x10.0 OBP

200x10.0 OBP

200x10.0 OBP

200x10.0 OBP

200x10.0 OBP

200x10.0 OBP

200x10.0 OBP

200x10.0 OBP

200x10.0 OBP

200x10.0 OBP

200x10.0 OBP

200x10.0 OBP

200x10.0 OBP

200x10.0 OBP

200x10.0 OBP

200x10.0 OBP

200x10.0 OBP

200x10.0 OBP

200x10.0 OBP

200x10.0 OBP

200x10.0 OBP

200x10.0 OBP

200x10.0 OBP

200x10.0 OBP

FOR
FINGER FLAPS
SEE SEPARATE
DRAWING

D

E

F

D

E

F

AREA TO
CUT AWAY OF

2000

6880

6010

5400

4800

4200

3600

3000

2400

1800

1200

600

6850

4516

4516

509

580

890

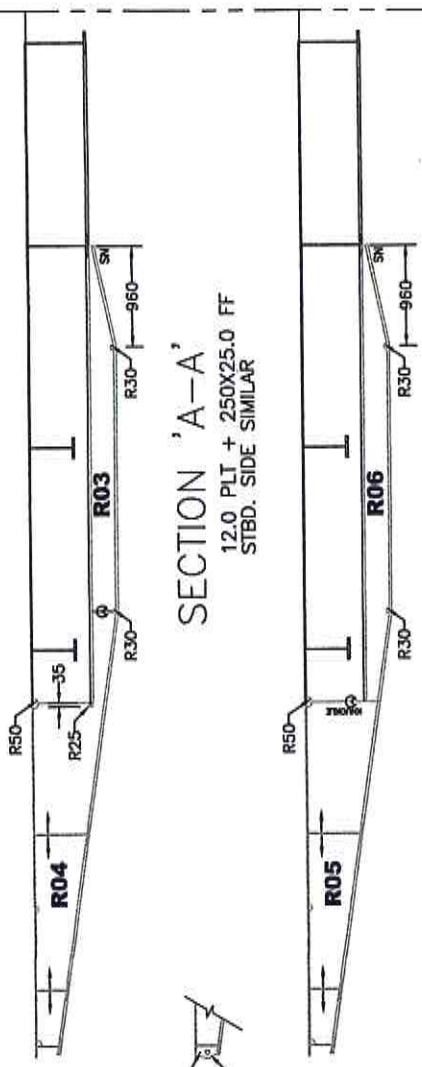
1255

20

2750

3290

6598



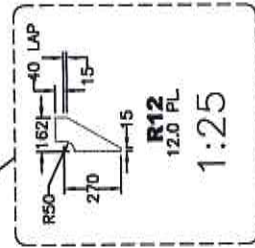
SEE FINGER FLAP DRAWING
FOR LUG ARRANGEMENT

SECTION 'A-A'
12.0 PLT + 250X25.0 FF
STBD. SIDE SIMILAR

20.0 PL



SECTION 'B-B'
12.0 PLT + 250X25.0 FF
STBD. SIDE OPPOSITE HAND

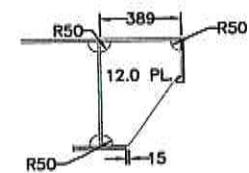
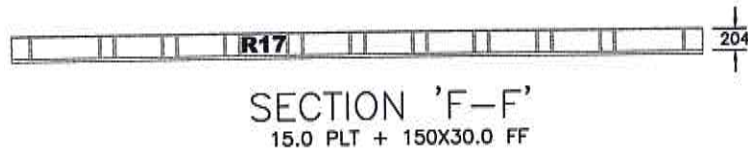
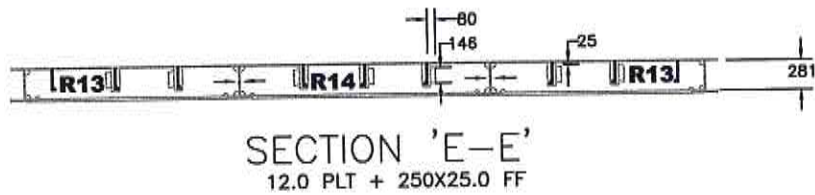
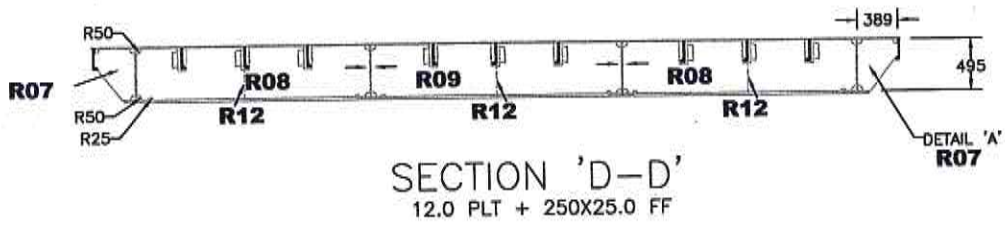


SECTION 'C-C' (TYPICAL)
R12
12.0 PL
1:25

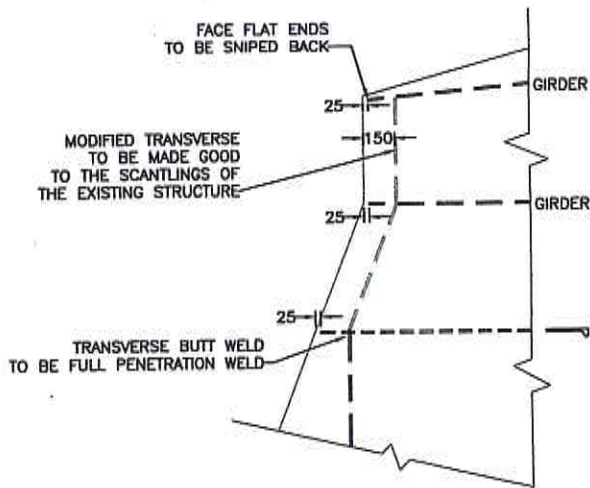
CERT'D
DATE ?

CHECKED
DATE ?

DRAWN
DATE ?



R07
DETAIL 'A'
1:25



DETAIL 'B'
1:25