

SENTINEL

Vol. 6, Issue 28 - Price: £1

"serving St Helena and her community worldwide"

Thursday 12 October 2017

Same-sex marriage debate heats up again

... pages 2-3

"At some point in our lifetime, gay marriage won't be an issue, and everyone who stood against this civil right will look as outdated as George Wallace standing on the school steps keeping James Hood from entering the University of Alabama because he was black." – A quote from George Clooney, brought up by an Ascension resident



Breast Cancer Awareness



Month Continues...

... pages 7, 13

- New Health Directorate Fees and Charges ... page 13
- Island Redies for First Commercial Passenger Flight ... page 5
- "The Local Buzz" About our Bees ... page 21
- Teacher Appreciation Days Held ... pages 10-11

FLIGHT NIGHT

The Mule Yard, Jamestown

Oct. 14, 5pm-late

... page 6

• Music by the Big Easy and Island Politics • Free drink tickets available on the night

An all-island celebration of our first commercial passenger flight

ST HELENA SNIPPETS

Pride and Prejudice

Same-sex marriage debate heats up again



Andrew Turner & Emma Weaver, SAMS

Despite the recent cool, rainy weather, the debate over same-sex marriage has been heating up the island once again.

Notes from the Sept. 22 LegCo meeting, submitted to both The Sentinel and The Independent, sparked a petition and an ensuing debate on-island.

The Notes had said that on Oct. 6, each of the island's 12 councillors would state if to;

a. Do nothing and leave [the same-sex marriage legislation] to the court(s) to decide

b. Enact equal marriage provisions; or
c. Enact other provisions that provide for legal recognition and equal treatment of same sex relationships

A petition to prevent the introduction of same-sex marriage – and instead encourage the community to realise there are “options” (such as option c.) that can provide “recognition but not marriage” – was launched Thursday, Oct. 5.

“We, the undersigned residents of St Helena, hereby petition our Elected Members of the Legislative Council to prevent the introduction of legislation allowing same-sex marriages on St Helena, and to be consulted when providing alternative legal recognition for minority groups,” reads the petition.

The petition was coordinated by Sted-

son Francis of Blue Hill, and was launched by Fr Dale Bowers. It is being carried out by Beatie Peters and Vincent March, also from Blue Hill, Coral Yon from the Salvation Army, Joy George and Fr Dale Bowers.

Though the petition is largely being carried out by church leaders, the group has stated clearly over the island's radio waves that “The petition against the introduction of same-sex marriage legislation that was launched on Thursday, 5th October 2017 is not a Church versus State petition.”

The petition is currently out for signatures; but it has already received resistance and opposition in the community.

Catherine Turner, CEO of the Human Rights Commission, went live on SAMS Radio 1 on Oct. 9 in order to clarify the human rights position on same-sex marriage.

“Same-sex marriage is something that is provided for under the Constitution,” Catherine said. “It says in our Constitution that people will be treated equally. There are 13 categories, and among those it says you cannot be discriminated against based on your sexual orientation.”

Catherine said it is the Government's responsibility to ensure that same-sex couples have the same rights and privileges as any other couples when it comes to marriage.

“If the church was going to be forced

to conduct ceremonies, I would be equally vehement about the fact that that shouldn't be done,” Catherine said. “Nobody can force the church to conduct ceremonies, nobody can force anybody to attend a wedding, nobody is going to force you to marry someone of the same sex; this is a pure choice.”

In the UK, The Marriage (Same Sex Couples) Act passed back in 2013.

“[The Act] makes the marriage of same sex couples lawful in England and Wales, while protecting and promoting religious freedom,” says a Government Equalities Office report. “The Government believes that opening up marriage to all couples demonstrates society's respect for all individuals, regardless of their sexuality, making our society fairer and more inclusive for all its members.”

And in recent months, St Helena's sister Overseas Territories have been enacting same-sex marriage legislation.

Many island residents have taken to social media as a forum to express their opinions on the legislation and the petition. One even worries tourists could be put off the idea of visiting St Helena if the island doesn't allow same-sex marriage legislation to pass.

“[...]We are on the brink of the biggest change this island has ever seen,” reads an Oct. 6 Facebook post by Barry Francis. “We've worked so hard to get this far and we risk it by opposing gay marriage? Oh, but how can opposing gay marriage af-



ST HELENA SNIPPETS

Venue	Date
Blue Hill Community Centre	Monday, 16 October
Jamestown Community Centre	Tuesday, 17 October
Kingshurst Community Centre	Wednesday, 18 October
Harford Community Centre	Thursday, 19 October
Sandy Bay Community Centre	Monday, 23 October
HTH Community Centre	Tuesday, 24 October
Silver Hill Bar, Levelwood	Wednesday, 25 October

fect our economy and future? [...]

Um... do we have Starbucks? McDonalds? A theme Park? Girls in grass skirts handing out flowers at the airport? No. At least not yet [...]. So what do we have to offer the world? Our culture. Our history. Who we are as a people. Because WE ARE ST. HELENA. Without us, it's just a pretty little rock in the middle of the big blue thingy. Be proud of that.

Now, before Mr and Mrs Smith decide on their next vacation destination they decide on a theme for the trip. Disneyland? Lego Land? New York? Jamaica? Or should we explore somewhere rare, beautiful and untouched. Keeping in mind, it's cheaper to travel to any of those places than here. So Mr and Mrs Smith figure they'd better research it first. Aaaaaaand there it is on a google search... we opposed gay marriage [...]. I'm taking my family to Cancun!!!! [...]

One person disagreed with the post, saying if tourists got turned away from the island, it would be in small numbers that didn't matter. But by Oct. 11, the post had 102 likes, 18 shares and 25 comments in support of same-sex marriage legislation.

A number of the island's councillors, as well, have publicly spoken up in support of the proposed legislation. But a few may still be sticking to arguments they presented, opposing the legislation, when running for council back in July.

"From a personal point of view, I would say that [same-sex marriage legislation] is going to happen in St Helena but I also think that now is not the time," said Chair of the Social & Community Development Committee, Tony Green, during his candidate interview. "I think that our society has grown up in a way that it wouldn't be able to handle this major change. I respect the people involved who would benefit from that, and I don't think anybody would despise anybody who is in that situation; but I think for the actual marriage it wouldn't be correct at the moment and unless I am per-

sonally convinced otherwise I would not wish to support it."

As a result of the Oct. 6 Legislative Council meeting, the island's Social & Community Development Committee will now be taking the same-sex marriage legislation out to public consultation. The consultations will all be held at 7:30pm, at the venues and locations provided in the grid.

Anyone wishing to comment during a consultation meeting may do so in writing or via email (tony.green@helanta.

co.sh), addressed to the Social & Community Development Committee Chairperson, Hon. Anthony Green. Comments must be in by no later than Friday, Oct. 27.

The draft legislation will be made available in hard copy at the Customer Service Centre in Jamestown from Monday, Oct. 16 and will also be uploaded to the SHG website. The Welfare of Children's Ordinance (Child Labour), and the new Domestic Abuse Bill, will also be discussed at these public consultations.

"The petition is saying 'we want to protect the sanctity of marriage,' and also to be consulted when providing alternative legal recognition for minority groups. Obviously I have to get my act together and get it around, but this is a collective thing." - Father Dale Bowers

"At some point in our lifetime, gay marriage won't be an issue, and everyone who stood against this civil right will look as outdated as George Wallace standing on the school steps keeping James Hood from entering the University of Alabama because he was black." - A quote from George Clooney, brought up by an Ascension resident



OPINION

SENTINEL COMMENT

Andrew Turner, SAMS

There is a lot to write about this week. The same sex marriage debate is heating up again, the first commercial passenger flight arrives this weekend and we are well into events for Cancer Awareness month.

For me, however, the issue that is sticking out is the idea to change the jury system on St Helena.

The number of jury trials on the island has been increasing in the last few sittings of the Supreme Court and this has given rise to the question, "can you ever have a fair jury trial on St Helena?"

Although members of council have proposed their own solutions (read page 33), to me it feels as though they have not understood the real issue of jury trials on the island.

The main issue is an obvious one. St Helena is a tiny community where everybody knows everybody, if not directly then at least by reputation. This issue is virtually impossible to remove, but has dire consequences in regard to people being unlikely to be convicted if they hold a position of power.

There are other issues associated with jury trials on-island. For the victim, they make the hardships of testifying in a court all the more difficult to bear. Imagine you had been sexually assaulted and you have to testify to a room full of people that you see every day, describing in graphic detail what happened to you. These people are not just the court staff, they are the people you buy your bread from in a morning or walk past on your way to work.

I think there is a solution. Essentially, the idea is that we team up with another Overseas Territory and they provide a jury, via video link, of people from that Territory to sit on our cases and vice versa.

This means that people can still have a full jury, but it will ensure a fair trial as there are no ties to people on island.

Of course this does give rise to some issues; finding a suitable territory to form this agreement with could be difficult. But in the long run, this move could strengthen our links to the other Territories and ensure that justice is for everyone.

South Atlantic Media Services, Ltd.,
The Media Centre, Castle Gardens,
Jamestown, St Helena, South Atlantic
Ocean, STHL 1ZZ. Tel: 22727
E: news@sams.sh, W: www.sams.sh

Latest Planning Issues

From the October 4 planning meeting

Andy Pearce, Contributed

At the LDCA planning meeting Oct. 4, an application deferred from last month to renovate a group of cottages above Market Street was finally approved, after the Chief Planning Officer (CPO) demonstrated to the Authority that roof parapets formed an important part of the character of Jamestown.

A chance comment by Sure at the September planning meeting now has the Planning Authority looking at the merits of the remaining old building next to the demolished Exiles Club. It is likely there are very few examples left in the world of these colonial type structures.

An application recently advertised in the newspapers for a shooting platform within High Knoll Fort turned out to include a corrugated shed of double-garage size. It has therefore required a little more consideration than originally thought, especially as the Fort is Grade I listed within its own conservation area.

Expansion of the endemic nursery in the Peaks National Park was given the go ahead, but as it included a new building where normally none would be allowed, ExCo must make the final decision. It was considered a special case. The application drawings, however, were not clear on the precise siting or orientation although the applicant said he was confident the expansion would not be a blot on the landscape.

Outline permission was granted for a new secure mental health building at the Hospital, again subject to ExCo approval.

The Sure building at the Briars, built by the Eastern Telegraph Company around 1900.



The detailed drawings showed the proposed building squeezed-in on the New Bridge side of St John's Villa. The board supported the need for the unit, but one member pointed out that a public footpath ran diagonally across the site. It seemed the site was so tight there was no room to realign it. The applicant's representative, the Chief Engineer, said he did not consider it was public right of way but the member stated it had been a public thoroughfare in constant use for at least 60 years. It was decided the issue would have to be resolved when the full application is submitted.

Concluding the meeting, the CPO said work on the Land Development Control Plan review had temporarily come to a halt. All agreed the meeting was the shortest in recent times but it would be back to normal next month, said the CPO.



Richard James International

Sourcing, Procurement, Shipping & Freight Forwarding

Serving the Islands of the South Atlantic

Offering a Monthly Container Service from the UK to the Falkland Islands, St Helena & Ascension Island

We look forward to being of service to you.....

Richard James International Ltd.
Worthy Road
Chittington Industrial Est.
Avonmouth
Bristol BS11 0YB
Tel: 0117 982 4575 Fax: 0117 982 6361
email: mail@richard-james.co.uk

Please see our website for further information: www.richard-james.co.uk



the guardian

St Helena's Airport Finally Ready for Touchdown

Flights to one of the most isolated islands in the world start this week, heralding a rise in tourists for the British overseas territory, whether it's ready for them or not

Emma Weaver, SAMS, for The Guardian

The “world’s most useless airport” is about to welcome its first commercial passenger flight – five years later than planned. Environmental and geographical challenges famously delayed the opening of the airport on St Helena, one of the most isolated inhabited islands on the planet, and the project, which cost the British government £285m, was saddled with the unfortunate moniker.

But on 14 October an SA Airlink aircraft will touch down on the infamous runway after a six-hour flight from Johannesburg (refuelling in Windhoek, Namibia, en route). With it will arrive 68 passengers and a new chapter in the history this tiny volcanic outpost in the middle of the south Atlantic.

Until now St Helena – a British overseas territory 1,200 miles off the coast of south-west Africa, measuring 10 miles by five – has only been accessible by Royal Mail ship (RMS St Helena). That six-day journey from Cape Town can cost up to £4,138. So a lot is riding on the new, weekly flight.

In 2010, the British (then coalition) government justified the cost of the airport arguing that the “additional short-term costs of constructing an airport are outweighed by the long-term benefits.” The island receives more than £26m in aid every year and the average annual salary of the 4,534 inhabitants is only £7,280. While islanders and history buffs may mourn the loss of RMS St Helena, which makes her final voyage on 5 February 2018, it is hoped the increase in tourism will provide a much needed boost for the



island’s struggling economy as aid is reduced. More flights will have to be added if the airport is to be deemed a success – and not an expensive white elephant.

Between May 2016 and May 2017, St Helena had just 3,795 visitors. A government report published in 2011 predicted that the new airport would increase tourism to 30,000 a year, eventually helping Saints, as the islanders are known, to become financially self-sufficient.

But progress is as slow as life on the island: it only got mobile phone reception in 2015. The first luxury hotel on the island, the 30-bedroom Mantis St Helena in the capital, Jamestown, is opening to coincide with the start of the new flight on 14 October. Otherwise, St Helena has a handful of guesthouses and B&Bs, many of which aren’t online and can only be contacted through the tourist office.

Nevertheless, in a world where remoteness is seen as a luxury, the chance to promote holidays to this speck of land has interested travel companies. Discover the World is the first UK tour operator to sell trips using the scheduled flights. Its seven-day fly-drive trip highlights the

island’s diverse landscapes (from arid coastline to lush interior), wildlife (more than 500 species are not found anywhere else) and history. At £2,450pp for the week, it doesn’t come cheap, and even independent travellers will have to pay £804 for a return flight from Johannesburg.

For locals, improved access is an opportunity to rebrand the island as somewhere other than just “the place where Napoleon died” and to reveal its other assets. As well as the diverse geology – showcased in 21 “post box walks” – the surrounding waters are a magnet for marine life. Whale sharks gather off shore in large numbers from November to May and humpback whales migrate through its waters from June to December. Both can be seen on diving and boat trips by local company Into the Blue.

Other, more controversial developments, include a golf resort and the development of Rupert’s Bay harbour to allow cruise ships to dock on the island. Exactly what impact these changes will have on St Helena remains unclear but, as one of the islanders might say, it will never again be the same as “the before days”.

ST HELENA SNIPPETS

FLIGHT NIGHT

An all-island celebration of our first commercial passenger flight

The Mule Yard, Jamestown
Oct. 14, 5pm-late



- Music by the Big Easy and Island Politics
- Free drink tickets available on the night
- Drinks and BBQ food for sale
- Videos celebrating the island
- SweetNest, and Fun Castle (weather permitting)



(If the flight is delayed, we'll still party.) Bands sponsored by St Helena Tourism.

ST HELENA SNIPPETS

Supporting Characters

Education Directorate “superheroes” support cancer awareness

Andrew Turner, SAMS

On Saturday, Oct. 7 a team of 17 superheroes including Batman, Superman and Spiderwoman swooped across the island, passing a baton and collecting donations for the Cancer Support and Awareness Charity.

The “Superhero Pass the Baton Challenge” was hosted by the Education Directorate in order to raise funds for cancer support. Staff from the Directorate dressed as superheroes, and took it in turns to carry the baton through stretches of Jamestown, Half Tree Hollow, St Paul’s, Longwood and Alarm Forest.

As each team member received the baton, they tied on a ribbon to represent a particular form of cancer.

The baton was launched from China Lane by the island’s Head Librarian, Jill Young. She proceeded down through Jamestown before handing the baton on at the foot of Jacob’s Ladder.

As the first walker, Jill braved the early morning shower but said that the day turned out beautifully.

“I thought the day went very well because everyone was in great spirits,” Jill said. “When the day started it was raining but it came out lovely afterwards, it was so fresh and bright just walking the town, and I really enjoyed that small walk.”

While dressed as Superman, General Maintenance Technician Neil George then took the baton up all 699 steps of the Ladder. Neil participated in the walk in honour of his father, who died of colon cancer.



“My leg of the journey was up Jacob’s Ladder,” Neil said. “But I hopped on and off the bus to do various parts of the journey as well. All in all, I thought it was fantastic. Obviously the cancer charity has always been close to my heart because I lost my dad through colon cancer, so this was really fitting that the Education Directorate came up with this.”

The new Teacher Training Advisor, Garry Cameron, also participated in the event. He chose to don the Batsuit as he carried the baton through Longwood.

“Batman was very good at conquering evil, and although he was up against hard times, good always triumphed over evil,” Garry said. “Cancer charities work very hard to try and find a cure for such an evil and horrible disease, and that’s why I chose Batman.”

The baton eventually looped back around

to town, where all the superheroes joined together and carried the baton into the Coffee Morning, which was being held by the Cancer Support and Awareness Charity, at the Jamestown Community Centre.

It was also originally planned that the local section of the Worldwide Photowalk would join the superheroes, taking photographs as they carried the baton through town. However, when the Photowalkers showed up, the superheroes had already sped past. Tourism is now looking to reschedule the local Photowalk.

As well as collecting donations on the Saturday, the superheroes had collected sponsorships before the event. Between sponsorships and donations, the Pass the Baton Challenge raised over £700. The money will go to the Cancer Support and Awareness Charity.

A Cuppa for Charity

Cancer Support and Awareness Charity hosts coffee morning

Andrew Turner, SAMS

The Cancer Support and Awareness Charity (CSAC) held a coffee morning at 10:30am Saturday. The hall at the Jamestown Community Centre was packed full of approximately 170 people sipping tea and coffee and enjoying cakes and pastries.

Tickets to the event could be bought in advance or at the door, and cost £2 per person.

The morning’s events also featured a raffle with various donated prizes, and a Bingo game with a cash prize. There was also a lucky draw, where three people won themselves some homemade sponge cakes.

“It was another great success and was well-supported,” said CSAC member Marlene Yon. “There were donations of raffle prizes and also cash from the public, so it was very well-supported and we were very pleased.”

Outside the hall were stalls selling cancer support items, such as T-shirts and hats. All funds from the sale of the items went to the charity.



Around noon, participants from the Superhero Pass the Baton Challenge came into the coffee morning after finishing the Pass the Baton event.

“Everybody cheered them, and I think they have taken quite a bit of money as well,” said Secretary Joy George. “Thanks to the Education Department because

they organised that. I think it was a great thought, and again people from all around the island contributed.”

The Charity is still counting the amount of money raised at the coffee morning. The next Cancer Awareness Month event will be the dance at Moonshine’s Bar in Blue Hill Oct. 14.

NOTICE BOARD



St Helena
Government

In association with
Cancer Awareness

Breast Screening Programme

Do you have any of the following signs and symptoms:

- *Lumps*
- *Rash*
- *Inverted nipple*
- *Dimpling*
- *Nipple discharge*
- *Pain*

If you have answered YES to any of the above, contact the doctor for an appointment, don't wait to be called.



What: A mammogram is an x-ray of the breast(s) and surrounding tissue

Why: For the early detection of breast cancer in normal breasts

Who: Women between the ages of 50-70 years

How: By letter of invitation and follow up phone call

When: The programme will start on Wednesday 4 October 2017, in line with Breast Awareness Month

Where: Radiography Department, General Hospital

Cost: Free if part of the screening service



For further information,
contact the Breast
Screening Nurse on
Telephone: 23563



WORLD NEWS SNIPPETS



From the BBC

Kenya's Raila Odinga quits election re-run

Kenyan opposition leader Raila Odinga has pulled out of October's election re-run. Mr Odinga said his withdrawal would give the electoral commission enough time to introduce reforms that will help deliver a more credible election.

The Supreme Court annulled the result of the original 8 August poll after finding irregularities and declaring it "neither transparent or verifiable".

The electoral commission had declared incumbent Uhuru Kenyatta the winner.

It said Mr Kenyatta had won by a margin of 1.4 million votes.

The re-run was due to take place on 26 October, but Mr Odinga said on Tuesday: "We have come to the conclusion that there is no intention on the part of the IEBC [electoral commission] to undertake any changes to its operations and personnel... All indications are that the election scheduled for 26 October will be worse than the previous one."

As a result, he said, "considering the interests of the people of Kenya, the region and the world at large" it was best that he withdrew from the race.

The opposition party has previously made clear its participation in the election was contingent on reforms being made.

It believes the election will have to be cancelled as a result of Mr Odinga's withdrawal, allowing "adequate time to undertake the reforms necessary to conduct an election that is in strict conformity with the constitution, the relevant laws and the constitution".

The government has previously said the election will be held as usual and the president will be sworn in.

Mr Odinga has also called on people to protest on Wednesday, using the slogan "no reform, no elections".

In September, Kenya's director of public prosecutions, Keriako Tobiko, asked the police and anti-corruption agency to investigate whether any electoral or criminal offences had been committed by members of the electoral commission.

He asked investigators to examine allegations that two senior opposition officials had gained illegal access to the commission's servers.

Singapore scientists reveal origins of durian's pungent aroma

One of nature's smelliest secrets may have been revealed, thanks to a dedicated team of durian-loving scientists in Singapore.

Researchers have found an odour gene which gives the thorny fruit its notoriously pungent scent.

The discovery meant the possibility of creating "odourless or milder-tasting" fruits in future, the scientists said.

It has sparked mixed feelings from durian aficionados, who worship its signature rank smell.

"A durian without its smell is nothing but an empty shell with no essence," wrote Singaporean Richie Liang on Facebook, who also compared "a durian without its unique smell" to "a human being who has lost his or her soul".

Durian: The fruit that generates extreme reactions

Malaysia bets China will warm to stinky 'king of fruit'

Year of the durian

After three years of research, privately funded by a group of anonymous durian lovers, the five-man team of cancer scientists now have a complete genetic map of the fruit, a world first.

Their findings were published in academic journal *Nature Genetics*.

"Our analysis revealed that volatile sulphur production is turbocharged in durians, which fits with many people's opinions that durian smell has a 'sulphury' aspect," said geneticist Patrick Tan, who co-led the study.

The researchers said the durian's distinctive odour served an important purpose to it in the wild: helping to attract animals to eat it and disperse its seeds.

Spain Catalan crisis: Puigdemont to address region's future

Catalan leader Carles Puigdemont is due to announce his plans for the future of the province amid growing pressure to drop plans to break away from Spain.

There is speculation he may announce a unilateral declaration of independence following a disputed referendum.

His address to the regional parliament is scheduled to take place at 18:00

(16:00 GMT).

Catalan police have been posted outside the parliament in Barcelona, sealing off the grounds to the public.

The mayor of Barcelona has urged Mr Puigdemont and Spanish Prime Minister Mariano Rajoy to "de-escalate" the crisis.

The Madrid government called on the Catalan leader

"not to do anything irreversible, not to pursue a path of no return and not to make any unilateral independence declaration".

And the president of the EU's European Council has appealed to him to respect Spain's constitutional order.

A vote was held on 1 October which Catalan officials say resulted in almost 90% of voters backing independence for the north-eastern region. Turnout was put at 43%.

The vote was deemed illegal by Madrid and suspended by Spain's Constitutional Court. "No" voters largely boycotted the ballot and there were several reports of irregularities. National police were involved in violent scenes as they manhandled voters.

Grey line

Analysis: Will Puigdemont make good his threat?

Tom Burridge, BBC News, Barcelona
Never before has the world watched Catalonia's regional parliament so closely. This evening, with probably large numbers of police and protesters outside, the leader of the devolved government is due to address Catalan MPs. Carles Puigdemont plans to present his government's results of the disputed referendum, which Madrid declared illegal.

Since then, Mr Puigdemont has said on several occasions that he will declare independence, despite fierce opposition across Spain and criticism from European governments.

Now, will he make good his threat? Or will he announce a more nuanced strategy, hoping still for a proper, recognised referendum one day? Under pressure to act, the Spanish government has made stark warnings, too. If the order comes, thousands of Spanish national police, here in Barcelona, could intervene. [...]

CONTRIBUTED ARTICLE

Teacher Appreciation Day

I touch the future; I teach Harford Primary School

Emma Dee, Contributed

An inspiring quote for an inspiring day. It is by Christa McAuliffe, Teacher- Astronaut, and is one most teachers at Harford Primary School agree with. Shaping the St Helena of tomorrow is a great responsibility that doesn't always get the credit it deserves. So, for one day a year, we say thank you to those teachers who guide, inspire, and sometimes urge us to fulfil our potential.

In Harford Primary, there was a whole week of activities and lessons to give the chance for the pupils to say thank you. Year 1/2 wrote and learnt a song, poetry was recited, and children made beautiful crafts such as flowers, cards, and paper beads inspired by the work of Shape to give to their teachers. A wonderful display was created by Year 4/5, and 5/6 to acknowledge the work of their teachers and school staff, as well as a trail of footprints showing how the teachers of Harford Primary help us on our walk through life. Biscuits and cakes were baked (everyone knows that teachers love cakes!) and gratefully received.

Teachers past and present came into the school to read to the children and lead activities centred around the role and hard work of teachers. On the actual day of 'Teacher Appreciation', the 5th of October, teachers and staff were allowed the rare treat of leaving work early at 3 o'clock – just in time to get to the shops for the latest fruit and vegetables! After all, the greatest gift you can give a teacher is time; there is never enough of it to mark books, prepare lessons, design exciting displays, keep the classroom tidy, and impart knowledge.

The week culminated with a celebratory 'Oscars' Award Ceremony for the teachers, complete with red carpet and Oscar Awards, attended by Ms Shirley Wahler, Hon. Ms Christine Scipio- O'Dean, and Hon. Miss Kylie Hercules of the Education Directorate. Not only were the teachers celebrated, but so were all the staff at Harford, as the school would not be able to run without its secretary and admin staff. The children presented their thank-you notes, cards, and gifts, which the staff gratefully received, along with thoughtful tokens of appreciation from the Education Directorate.

Being a teacher is an honour and a privilege, but it is also a responsibility. 'A good teacher is like a candle; it consumes itself to light the way for others,' and while every teacher is passionate about their career, it is usually the children's achievements that are highlighted, however big or small, as it should be. But it is still important to spare a thought for those people who have the task of moulding the next generation of St Helenians. At Harford Primary School, we can certainly say that the pupils will grow to be individuals who value and appreciate their education, and like their teachers, become a real asset to the future of our little island.



Contributed by Head Teacher – Miss Elaine Benjamin

Teacher Appreciation Day started with a special assembly at Pilling Primary in the presence of the Chairperson and members of Education and Employment Committee, Director and Assistant Directors of Education, Chairperson and members of the schools' PTA Committee, staff and pupils. Children read poems and messages of thanks to their teachers and this was echoed by those in senior positions mentioned above.

The PTA gave a thank you gift to all members of staff following a speech by the Chairperson, Miss Christine Thomas and following the assembly, all staff were treated as 'guests of honour' to tea and refreshments all kindly donated and served by PTA members. A beautiful cake was also donated by the Education Directorate. Staff were able to enjoy this whilst PTA members supervised the children at break time.

We certainly felt very special and honoured today- On behalf of all staff, we would like to say a huge thank you to all who attended; to all children and parents who brought cards and gifts; to our new PTA members for their support; Ms Anita Constantine, Miss Danielle Anthony and School helpers who decorated the hall with balloons, flags and lights for the occasion.

A teacher takes a hand, opens a mind, and touches a heart - Author: Unknown





CONTRIBUTED ARTICLE

Teacher Appreciation Day

Teacher Appreciation Day at St Pauls Primary
Teacher Appreciation Day started off on a wet and cold, blustery morning at St Pauls with about half of the school attending as the virus had badly affected all at school.



St Paul's
PRIMARY SCHOOL
Together Everyone Achieves More

Headteacher Mrs Pat Williams led the Assembly focusing on our teachers of today and how teachers' can influence and make a difference to all pupils' paths in Education.

Children are the country's future, hence they need to be positively nurtured and that is done best by our teachers as children get inspired by them. Headteacher spoke about how she was inspired by a lot of teachers and head teachers when she was growing up. She has a lot to be thankful for to her teachers and superiors for guiding her along the path. You can be the same! Studying and aiming for a job in the future.

Teachers shape the minds of our children and our future. There really are no words to express gratitude for all they do. Many of them are role models and make a huge difference in the lives of children.

She told the children that teachers open the door. You enter by yourself.

"I am very proud of our teachers and others who work in the organisation. To you teachers, you have one of the most challenging and most meaningful jobs in the world. Each day you help our kids navigate the path to adulthood. So, I want you to know how much we appreciate you."

Director of Education Mrs Wahler also popped in to say a few words to our teaching staff and thanked them for the hard work that is done by all.

Primary Advisor did a piece on the magic of teachers!

We were also very fortunate to have 2 members from the Education Committee Mr Beard and Miss Hercules to join in the morning. Miss Hercules also gave her words of appreciation.

Each class had the opportunity to say thank you to their teachers and some offered gifts and cards.

Teachers then received a small gift from PTA as a token of appreciation for which all were thankful for.

We hope all teachers enjoyed their day and from the Directorate they were given a lovely cake and an hour of work from 3- 4pm to go home!



TEACHER APPRECIATION ASSEMBLY

PAS held their Teacher appreciation Assembly on Friday 6 October at 2pm. Also in attendance were the Director of Education, Assistant Director of Education (Schools), Chairperson of Education and Employment Committee and the Chairperson of PAS PTA.

The assembly itself was designed and lead by the Sixth Form students at PAS. It began with a welcome to everyone, and then a song by Chloe Midwinter – 'You raise me up'. A vote of thanks was given by both the Chairperson of the Education Committee and the Chairperson of the PTA. Activities in the assembly included: a small 'Who Am I?' competition; a picture presentation of the staff and acrostic poems written by the students were shared. The assembly which lasted about 40mins ended with a video entitled 'You have made a difference.'



Staff and guests were then invited to the staffroom for refreshments after a 'Guard of Honour' through the foyer.



NOTICE BOARD



VACANCY – BUSINESS SUPPORT ADMINISTRATOR

Connect Saint Helena Ltd currently has a vacancy for a Business Support Administrator at the main office at Seales Corner, Jamestown. This is a permanent position with the successful candidate to start as soon as possible.

The role of the Business Support Administrator is to provide a comprehensive support service to customers and internal departments. The role is varied and some of the main duties of the post are:

- Primary receptionist to provide excellent service to customers representing the company as the first point of contact.
- Processing of reported faults on the networks and administration of call out records.
- Processing of applications for new service connections.
- Invoicing and issuing of purchase orders and fuel requisitions.
- Disseminating outage announcement and any other information to the public via the local media.
- Administration of the Company vehicle fleet maintenance programme.
- Updating computerised records and any other clerical and administrative support as required.

The ideal candidate will have:

- Excellent communication skills.
- GCSE Maths and English at Grade C or above or equivalent.
- Excellent IT skills, including use of email, Excel and Word applications.
- A minimum of 3 year's experience in a busy customer focussed environment.
- Experience with Access Dimensions preferred, but not essential.
- Excellent organisation skills and be able to multi-task and prioritise workload working to deadlines.

Connect Saint Helena Ltd is an equal opportunity employer and offers a competitive salary commensurate with qualifications & experience. Other benefits include 25 days paid annual leave, 15% pension contribution and support for career development.

For a full job description and application form please contact Kerry Lane on 22255 or email kerry.lane@connect.co.sh. Completed applications should be handed into our office at Seales Corner, Jamestown, or emailed to the above email address by 4pm Wednesday, 18 October 2017.



ST HELENA SNIPPETS



Breast Screening Service

"But you don't have to wait for an invitation"



Ferdie Gunnell, SAMS

The Breast Screening Service has now started at the General Hospital.

On Oct. 4 the mammography machine, which the League of Friends and Cancer Support & Awareness charities heavily supported, was unveiled in front of invited guests.

Health Directorate Director Dr Akeem Ali said only women of a certain age can be invited for the screening programme, where issues can be detected and "we can do something about it." This is an important part of the service - to prevent ill health and prevent complication.

"This is not the same as the treatment, when you are already unwell and there are concerns about this and that," said Dr Akeem. "This is about screening a particular age group - 50 to 70."

Women will be invited in turn for a mammogram every three years. They will get a report that will determine what happens next.

If anybody does have concerns about their breasts, perhaps because of family history, they can schedule a chat with a doctor "about what does this mean for me," or they can make an appointment



Photo supplied by SHG.

to discuss options.

"So you don't have to wait until you have symptoms, you don't have to wait until you are invited," said Dr Akeem.

Some people have asked why 50 to 70, why not 30 to 40?

"One of the things with the mammogram examination is that it has to be sensitive and specific for what we are looking for," said Dr Akeem.

For women younger than 50, the mammogram is not the best examination

for screening purposes. There is risk (x-rays carry risk, no matter how low the radiation), and there is potentially no advantage to having a mammogram done for women younger than 50.

When people will not really benefit from such a screening programme "it is best to do no harm," said Dr Akeem. "Now if you are below 50 and you have a lump or discharge from a nipple, then you do need to see a doctor to determine what the next step should be."

5% Increases Next Financial Year

New Health Directorate fees and charges

Ferdie Gunnell, SAMS

The Public Health Committee on Oct. 4 considered proposed increases in fees and charges for services the Health Directorate provides.

The proposed increases are now being finalised for the budget process next financial year. Although a Government policy says fees and charges are to be revised each year, there has been no blanket increase for four years. A review in 2016 decided against increases. Someone commented that "delaying increases annually makes it harder for the next year."

Residents and visitors have significantly different Public Health rates. Generally fees and charges will increase by 5%. In some instances, increases will be slightly more (because of rounding upwards). In very specific cases, the actual cost could apply; an example given was a search for medical records.

The proposed new schedule for residents was reviewed. Some rates are very heavily subsidised.

Except where there are exceptions currently in place (which will continue), prescriptions will go from £2.10 to £2.50; consultations outside normal hours £12.65



to £13.50; a medical examination for employment increases from £10.50 to £30.00; an x-ray image £6.30 to £7.00; a medical examination for drivers over 70 will now cost £10.60. There are different categories for operating fees, and a Hospital charge per night will increase from £12.65 to £13.50. An ECG increases from £3.80 to £4.00 and a mammogram test will cost £10.00.

From next year, there will be a move toward full cost recovery. The extra revenue will help with the cost of maintaining new equipment at the Hospital. Significantly, in order to assist people with paying for their medical costs, consideration has been given to phasing out fees and charges and replacing them with a Health Insurance and Prepayment Scheme, which is still in the works.



LIFESTYLE & CULTURE

A Wander down Yesteryear

New uses for old buildings

Ferdie Gunnell, SAMS

In September, Legislative Council approved a motion in support of providing additional housing to meet the current serious housing shortage. Apart from building new houses, it was suggested that disused government-owned properties should be refurbished for this purpose.

The motion brought up memories of some of the other government properties that have formerly been repurposed. There have been many, including schools that were closed in country areas. Buildings were renamed once they took on new purposes. Previously, buildings were named according to what they were used for. This article, "A Wander down Yesteryear," looks at just a handful.

Our culture, specifically in regard to the way we plan care facilities for our elderly, our people with mental conditions and our children without proper parental care, has really evolved. We strive now for appropriately facilitated care units, adequate staffing and professional expertise, which wasn't available in bygone years.

Try to imagine an elderly people's home, a facility for people with mental problems, and a children's home all in one complex and staffed only with a Warden (the late Mr Charles Davids), a Matron (the late Mrs Irene Davids), staff numbers that could be counted on one hand and residents who did some of the chores, for which they weren't paid wages (instead, food and a room to sleep went toward their upkeep). There wasn't then a proper benefits system protected by law for these vulnerable people.

Such a basic system of care would be difficult to comprehend these days, but that is the way it was. There definitely was care in abundance and a lot of understanding, but there was very little support.

The Sundale property, for instance, was in use for just over 60 years. Originally, it was called "Asylum" (which is what a mental hospital used to be called in St Helena). Then, the name was changed to "Mental Hospital," but along the way, the building was renamed Sundale House (which included a "Challenging Behaviour Unit" within its walls), by open competition won by Miss Clare Duncan.

The residents of the Challenging Be-



haviour Unit at Sundale House, Half Tree Hollow (HTH) were transferred to their new home, Ebony View, in March 2015. The refurbished, former-HTH School was designed specifically for people with disabilities, and given a new name (Ebony View) that is inspiring, uplifting and far removed from old names that residents of similar facilities had to live with.

Sundale House, in very recent years, would have been renamed HM Prison, or some other appropriate name, had Government not decided to look for more appropriate sites (Bottom Woods has been proposed) for a new Prison to replace the reported no-longer-suitable one in Jamestown.

And in Jamestown, vulnerable elderly people used to be housed in the "Poor House," which was later called the "Work House." In 1955, the residents were transferred to the adjacent refurbished premises called the "Parish Home." This was later renamed "Old People's Home," and later still, the "Haven." These buildings have since been refurbished, and are currently used by Connect Saint Helena as offices.

The complex in Jamestown used to have "Cells for mental people," which were located in the yard near the Hospital (which was situated under what is now Government Landlord Accommodation). Many years later, the purpose-built Mental Hospital was constructed in HTH (Sundale), and people with mental problems were transferred to there from the "Asylum" in Jamestown. This was

managed by the Senior Orderly Mr Harry Derek Clifford. It was difficult in the beginning to get people to take up the new positions on offer in this brand-new facility, because they had heard how difficult it was for staff coping with some of the clients in the former one.

The Jamestown complex also catered for vulnerable children. Later, they were transferred to the new Lady Margaret Field Children's Home in Longwood, which opened on Oct. 12, 1966. This care facility was managed by the late Mrs Rose Yon and after that the late Mr Rex Stevens, with appropriate staffing. Many children needed care at the time, but eventually when Social Services put in place new strategies and systems, and numbers had dwindled the buildings were turned over to the Government Landlord. Eventually, the Work House also was turned over to social housing, now known as Teale's Cottages.

The foundation stone for the Her Royal Highness Community Care Centre at Ladder Hill was unveiled on the occasion of the visit to St Helena of Her Royal Highness Princess Anne, the Princess Royal, on Nov. 15, 2002. On Sept. 6, 2008 this DfID-funded project was opened by Governor Andrew Gurr. The residents from Jamestown were again transferred, albeit this time to quite plush surroundings.

Funding for the Parish Home, Mental Hospital and incidentally also the General Hospital that opened in March 1955, was provided under the UK Colonial Development and Welfare Act.

PUZZLE TIME

Cancer Awareness Edition



Colour in...

Colour in the magical mushroom with colours of your choosings...



Cancer:

Stomach Cancer

This cancer is the accumulation of an abnormal (malignant, cancerous) group of cells that form a mass in a part of the stomach.

Sourced from MedicalCentreNews.com

Sentinel Wordsearch -

NANOSILVER: NAUGHTY OR NICE?

M H A E J C Y P G E H S R B Q F B E Q C
E T A I R Y G R A S M G N A W V T C S H
I Y P N O M O D K G B A N D A G E S T B
B V O X T Y Q L J I N C R I M F E J C G
R R W I A I E P L O I M M R D C V D S V
S S W L L E B L S E D I E S O E L H N C
T F T G I D I I N R J C B L O W E L J L
P Y N P T O L T O X E R L S L M X F I O
Z L B E N V G N I T A O C S B I Z E H Z
Y R Y T E C N A T S I S E R G I Y T Q D
G K H R V G Q T C D N C Y N B N K E Q R
T Q A I R E T C A B A O I R Y Z U D Y B
B O R E C Y C L E F S P S D L G W G O S
A A X D L E N A R B M E M I D U E C H C
E V R I N Q X U U U O E V L O V E K L W
U O X S C H S U L F T R T W T P A D A E
C N A H V H B C E U X T C A A I T C E L
P W R X C A A L C Q Q V P I L K M G E Z
W Q J G W B D U J B I E Z O M R B U Y O
G V V E V H A R Z B D O R P W W Y A P W

ADAPT	EMBRYOS	MICROSCOPE
ANCIENT	EVOLVE	NANOSILVER
ANTIBIOTIC	FEEDING	PETRIE DISH
ARGYRIA	FLUSH	POISONS
BACTERIA	IONS	REACTIONS
BANDAGES	LAKE	RECYCLE
BILLIONTH	LEAKY	RESISTANCE
BLOOD	MARROW	ROYALTY
CLUMPING	MEMBRANE	SURFACE
COATING	METAL	TOXIC
COLLOIDAL	MICROBE	VENTILATOR

NOTICE BOARD

For more information
you can contact:

Telephone : 22607

Email :

shcc@sainthelena.gov.sh

Or you can visit us at the

St Helena Community
College, Market Street,
Jamestown

**Are you looking
for a career
change ?**

**Maybe you're curious
about the opportunities
that are available in our
job sector ?**

**Or are you just
looking for a little
inspiration ?**

WELL THEN WHY NOT ATTEND CAREERS FAIR 2017

AND OPEN YOUR GATEWAY TO OPPORTUNITY



**What Time ?
10 AM-4PM and
Re-Opening at
6PM-8PM**

**When ?
Wednesday
18 October 2017**

**Where ?
Prince Andrew
School Hall**

**Vacancy -
Tourism
Office
Manager**



St Helena Tourism is seeking to employ a suitably qualified and experienced individual to work within the Tourism team and with the wider Economic Development Group.

The successful person will be responsible to the Director of Tourism for the development of a sustainable visitor experience, including the day to day management of the Tourist Office and its services; working with stakeholders in the tourism industry to create and maximise opportunities for the Island's culture, heritage and natural environment.

The successful person must also have experience working in the service industry, with previous supervisory/ management responsibilities.

A copy of the Terms of Reference and an application form can be obtained via email or collected from the Tourist Office or Enterprise St Helena Reception. Completed application forms should be submitted to the Human Resources and Administration Manager, Ladder Hill Business Park by no later than 1200 hrs. GMT on Monday 16 October 2017.

For further information please contact:

Human Resources & Administration Manager, Marilyn Caswell on telephone number 22920 or email on marilyn.caswell@esh.co.sh



THE ECONOMIC DEVELOPMENT GROUP

Head Office | ESH Business Park | Ladder Hill | Tel: +290 22920 | Fax: +290 22166 | Email: info@esh.co.sh

Visit us online Business and Investment: www.investinsthelena.com | Tourism: www.sthelenatourism.com





Nursery visit to Plantation House

This half term the Nursery are learning all about me. Each week we learn about a different aspect. Last week we learnt about our homes and we went on a fantastic visit to Plantation House, home to the Governor and Jonathan the Tortoise, the oldest inhabitant on the Island. We compared the size of the house to our homes and were amazed by the share size! We were fascinated with the special chair that turned into a staircase!!

We had a fun time exploring Plantation House.

We would like to thank the Governor for allowing us to visit her home and to the Manager, Debbie Stroud for taking us on the grand tour which we thought was awesome!!!



NOTICE BOARD



Enterprise St Helena wishes to procure the following interpretation signage panels with accompanying metal stands:

10 X A3 Boards with freestanding frame

02 X A3 Boards with flat fitting

03 X A2 Boards with freestanding frame

01 X A1 Boards with freestanding frame

The following information is required and is part of the scoring criteria for the successful quotation:

1. Cost for printing and procurement of the above quantities and sizes
2. Delivery cost to St Helena Island
3. Delivery date if ordered 1st November 2017

Specification must include

- 10 year minimum manufacturer guarantee
- Sun and heat fade proof
- None visible Security screws
- 13mm Minimum thickness
- Free standing signs to be on diagonal slope
- Weatherproof 2 inch Steel legs at 1.5meters
- Has to be able to display the designs chosen by Enterprise St Helena

Interested persons are to submit their quotations in writing to either the Enterprise St Helena Office at Ladder Hill Business Park or info@esh.co.sh with Interpretations clearly marked on the envelop or subject line. **Deadline is 1400 on Friday 20 October 2017.**



For further information, including art work designs, please contact Merrill Joshua on telephone number 22920 or Email: merrill.joshua@esh.co.sh

THE ECONOMIC DEVELOPMENT GROUP

Head Office | ESH Business Park | Ladder Hill | Tel: +290 22920 | Fax: +290 22166 | Email: info@esh.co.sh

Visit us online Business and Investment: www.investinthelena.com | Tourism: www.sthelenatourism.com





SAMS RADIO 1 SCHEDULE

Radio 1 SCHEDULE



Please note this schedule is subject to change

MONDAY

Music

10am - 12 Noon: Music Playlist
12 Noon - 4pm: Music Playlist
7pm: Music Playlist

Presenter Shows

LIVE 7am - 10am: Sunrise Show with Roxanna Williams
LIVE 4pm - 7pm: Afternoon Drive with Andrew Turner

TUESDAY

Music

10am - 4pm: Music Playlist
7pm: Music Playlist

Presenter Shows

LIVE 7am - 10am: Sunrise Show with Donna Crowie
LIVE 12:30pm - 2:30pm: 1548 with Ferdie Gunell
LIVE 4pm - 5pm: Afternoon Drive with Emma Weaver

Chart Shows

LIVE 5pm - 7pm: Mike Brown

THURSDAY

Music

10am - 4pm: Music Playlist
9pm: Music Playlist

Presenter Shows

LIVE 7am - 10am: Sunrise Show with Andrew Turner
LIVE 12:30pm - 2:30pm: 1548 with Ferdie Gunnell
LIVE 4pm - 7pm: Afternoon Drive with Donna Crowie
Golden Oldies
LIVE 7pm - 9pm: My Generation Show with Stuart Moors

FRIDAY

Music

10am - 4pm: Music Playlist
7pm: Music Playlist

Presenter Shows

LIVE 7am - 10am: Sunrise Show with Mic-kail Harris
LIVE 12pm - 1pm: Behind The Music with Roxanna Williams
LIVE 1pm - 3pm: Free for Sale Friday with Mic-kail Harris
LIVE 4pm - 7pm: Afternoon Drive with Roxanna Williams

WEDNESDAY

Music

10am - 12 Noon: Music Playlist
12 Noon - 4pm: Music Playlist
7pm: Music Playlist

Presenter Shows

LIVE 7am - 10am: Sunrise Show with Donna Crowie
LIVE 4pm - 7pm: Afternoon Drive with James Fantom / Barry Francis

Arts & Crafts

LIVE 2pm - 4pm: Arts Wednesdays with Teeny Lucy

SATURDAY

Music

1pm - 5pm: Music Playlist
7pm: Music Playlist

Presenter Shows

LIVE 8am - 1pm: Saturday Show

Genre Shows

LIVE 5pm - 7pm: The Soul Show with Lydia

SUNDAY

Music

2pm - 3:30pm: Music Playlist
6pm - 7pm: Music Playlist

Presenter Shows

LIVE 8am - 1pm: Sunday Show

Chart Shows

LIVE 3:30pm - 6pm: Mike Brown

**Would you like to be a
Volunteer Radio
Presenter for SAMS
Radio 1 call 22727**

Streaming Live On:

102.7MHz, 90.5MHz, 105.1MHz, 105.3MH

Local News Everyday At:

7am, 10am, 12 Noon, 5pm, 7pm, 10pm and 3am



NOTICE BOARD



Christmas Shipment from The UK – Voyage 266

We wish to remind our customers that the last shipment to reach St Helena before Christmas closes for cargo on October 21st.

All cargo for this shipment must be at our warehouse no later than this date (orders must be placed in advance allowing time for goods to arrive with us before October 21st)

We look forward to being of service to you...





CONTRIBUTED ARTICLE

The Local Buzz



"Plant a Flowering Tree for the Honey Bee." Honey is one of Nature's Super Foods.

Tony Leo, Secretary to the St. Helena Bee Keepers Association, Contributed

Hello again. Was the first episode on Bees from the Bee Keepers Association interesting to read?

These articles are for those interested in bees and also Bee Keepers on St. Helena who keep bees as a hobby. At this moment in time there's no big business that can be developed from keeping bees but you never know what will transpire in the future. That is why the Bee Keepers Association is so keen to disseminate valuable information about the bees of St. Helena and how we should care for them for now and the future.

I was telling you in the last episode about the diseases that imported honey could carry and why it cannot be allowed in (unless it is supported by an import permit from A&NRD.) So it is so important that we do our part to keep the island free from those diseases that are devastating apiaries in other parts of the world. Our nearest neighbour Africa, is suffering badly from the American Foul Brood that spread from the East Coast to South Africa and is now moving up the West Coast. Because we are far enough from the mainland, bees should not travel the distance to St. Helena, so that is a plus.

There is a law in place to stop all imported honey coming into St. Helena, also some products containing honey (if not processed) and also bee keeping equipment, especially used clothing and other devices used to process honey. Anyone can purchase hives and other items for bee keeping but they must first obtain an import permit from the Agricultural & Natural Resources Department at Scotland. You must also state which Company or Firm you are dealing with. When your items arrive, it will be inspected by Customs and if all adds up to what is on your invoice, you are free to have the items. You can now get along with the task ahead of you in either maintaining your hives or if you are starting out as a first timer, then you will probably need some advice or assistance in setting up your hive and collecting a swarm of bees.

Please note the heading on the top of this page.... The Association's motto "Plant a Flowering Tree for the Honey



Eucalyptus trees along the Peakdale Post Box walk.

Bee. The Association devised this motto some years ago in the hope that people would take note and do just that. Plant a tree or a shrub that gives pollen or nectar that is the food for bees. Like us, bees require food on a daily basis to survive and to feed a swarm of approximately seventy five thousand bees of that hive. If there are sufficient flowers, and they have enough to live on, then the surplus is for making the much needed honey that we all enjoy on the breakfast table, but this seldom happens. So the more trees that blossom and the more plants growing that will eventually flower are all good food for the honey bee. Everyone who has access to land and has crops growing of cucumbers, beans, peas, squash and pumpkin and many other varieties that flower will be contributing to the health of the bees as well as himself because the bees will pollinate his crops

which will in turn give good yields and the bees will be happy for the flowers so they can feed. The Association is always evaluating the locally grown trees and shrubs in blossom and looking for signs of the busy bees at work. The most prolific tree as far as it is known is the eucalyptus. There are seven different kinds on the island and maybe more. Some varieties flower more often than others. The bee keepers in Australia and South Africa depend largely on the eucalyptus forest for the honey flow. Honey flow is when there are large areas of flowering trees and shrubs that the bees like and with favourable weather, the bees make the most of the flowering season and are kept busy turning the nectar and pollen into pure honey.

In the next episode of Bee Talk, I will be looking at the habits of the honey bee. Stay as sweet as you are till then....

FAITH MATTERS



Saturday 14 October 2017

0915 – 1000 Sabbath School Programme

1000 – 1045 Group Bible Study

1100 – 1200 Divine Service

1400 – 1500 Personal Ministries

Sunday 15 October 2017

1600 – 1700 Gospel Music Programme

Guinea Grass Community Centre

Wednesday 11 October 2017

1930 – 2030 Prayer Meeting

All are Welcome

For further information contact:

Pastor Paul Millin Tel No 22267



Activities at the Army this weekend

FRIDAY 13TH OCTOBER 2017
'QUALITY SECONDS' SHOP OPEN
AT THE JAMESTOWN HALL FROM
10AM TILL 1PM. DO DROP IN AND
GRAB A BARGAIN. SHOP CLOSED
ON SATURDAY 14TH OCTOBER.

SUNDAY 15TH OCTOBER 2017
FAMILY SERVICE AT THE HALF
TREE HOLLOW HALL AT 11AM. ALL
ARE WELCOME.

MONDAY 16TH OCTOBER
MUMS & TODDLERS AT THE HALF
TREE HOLLOW HALL FROM 10AM.

EVERY WEDNESDAY EVENING
PRAYER MEETING & BIBLE STUDY
AT THE HALF TREE HOLLOW HALL
AT 7.30 PM. ALL ARE WELCOME.

There is always a warm welcome for
you at the Salvation Army.

If you would like to know more
about The Salvation Army's activi-
ties, contact Lt. Coral Yon on tele-
phone nos 22703/24358.
Take care and God bless.



BAHA'I FAITH



**"The advent of the
prophets and the
revelation of the Holy
Books is intended to create love be-
tween souls and friendship between
the inhabitants of the earth. Real
love is impossible unless one turn
his face towards God and be attract-
ed to His Beauty."**

Baha'i Scripture

DEVOTIONAL MEETING
BAHA'I CENTRE

Gumwoods
8pm

THURSDAY EVENINGS

ALL ARE WELCOME

Telephone 24525 or 24342
www.sthelenabahai.org

DIOCESE OF SAINT HELENA

The Cathedral Parish of St Paul

Sunday 15 October 28th Sunday of the Year
 8.00 a.m. Eucharist Cathedral
 10.00 a.m. Sung Eucharist/Harvest Festival
 Cathedral
 3.30 p.m. Eucharist/Harvest Festival St Peter

Thursday 19 October
 10.00 a.m. Eucharist Arabia

Sunday 22 October 29th Sunday of the Year
 8.00 a.m. Eucharist Cathedral
 11.00 a.m. Eucharist/Harvest Festival/Parade
 St Andrew
 11.15 a.m. Sung Eucharist St Helena & The Cross
 5.30 p.m. Choral Evensong Cathedral

The Parish of St James

Sunday 15 October 28th Sunday of the Year
 9.30 a.m. Sung Eucharist St James

Wednesday 18 October
 7.30 a.m. Eucharist St James

Thursday 19 October
 7.00 p.m. Health Worker's Service St John

Sunday 22 October 29th Sunday of the Year
 9.30 a.m. Sung Eucharist/Harvest Festival/Parade
 St James

The Parish of St Matthew

Sunday 15 October 28th Sunday of the Year
 11.15 a.m. Sung Eucharist St Mark

Tuesday 17 October
 7.00 p.m. Eucharist St Mark

Sunday 22 October 29th Sunday of the Year
 11.15 a.m. Sung Eucharist St Mark

Notices for the ROCK
this week are as
follows:



Church Service

At Half Tree Hollow Community
Centre at 6pm on the 15th October
2017

Cell Groups

At Cape Villa 10th OCTOBER 2017 at
5.30pm

At the home of Anthony and Elaine
Hopkins at 7.30pm on the 11th OC-
TOBER 2017

At Sandy Bay 7pm Call Priscilla
Joshua 23249 7pm on the 11th OC-
TOBER 2017

CONTRIBUTED ARTICLE/ST HELENA SNIPPETS

Local Baha'i Prepare for Worldwide Event: 200th anniversary celebration of the birth of the founder of the Baha'i Faith

Barbara George, Contributed

In cycles gone by though harmony was established, yet, owing to the absence of means, the unity of all mankind could not have been achieved. Continents remained widely divided ... In this day, however, means of communication have multiplied, and the five continents of the earth have virtually merged into one. In like manner all the members of the human family, whether peoples or governments, cities or villages, have become increasingly interdependent. For none is self-sufficiency any longer possible. The bonds of trade and industry, of agriculture and education etc. are being strengthened every day and the vision of the unity of all mankind becomes a possibility.

How to achieve this unity of humankind, while at the same time cherishing the tremendous diversity

of the world's cultures, is at the core of the teachings of Baha'u'llah, contained in letters and books spanning over 100 volumes. Luis Gushiken, a member of Brazil's Parliament in 1992 when it held a special session to pay tribute to the life of Baha'u'llah, described His writings as "the most colossal religious work written by the pen of a single Man." Readers will find that Baha'u'llah's writings are particularly fascinating because, in addition to restating the essential moral teachings of all the world's major religions which have been the basis of the great civilizations past, He also wrote about global and societal issues such as statesmanship, science, collective security, the role of the news media, international language, economic issues, life elsewhere in the universe, medicine, dreams, the environment, energy, global governance, agriculture, education and many others..

Today over 7 million Baha'is worldwide are preparing for upcoming celebrations. On October 21st and 22nd, 2017, in some 100,000 localities worldwide, they will celebrate the bicentennial of the birth of Baha'u'llah, the Founder of the Baha'i Faith. These global festivities involve people of thousands of ethnic



The Nine- Pointed Star is the symbol of the Baha'i Faith and represents the nine Major World Religions

backgrounds.

These celebrations will be open to all throughout the world.

On St. Helena the Baha'is are celebrating the occasion at the Baha'i Centre, Gumwoods, with a Prayer meeting next Saturday 21st October at 7.30pm and a tea party on Sunday afternoon 22nd at 3.30 pm. We invite others to join us on either or both occasions, but please contact the Secretary by next Tuesday 17th for catering purposes, on telephone 24342.

Prison to Move to Bottom Woods?

Jamestown prison "unfit for purpose"

Ferdie Gunnell, SAMS

Executive Council on Oct. 3 endorsed two proposed sites for a new Prison in the Bottom Woods vicinity.

Members gave approval for two sites – one of which is west of the Meteorological Station and the other of which is known as the Goat Pen Area – to undergo further investigation for suitability, and to then to be taken out to public consultation.

Acting Chief Secretary Susan O'Bey, when presenting the discussion paper, said the need for a new Prison has been on the table for a number of years, and there have been two reports about the Prison in Jamestown being "unsuitable" and "unfit for purpose."

Her Majesty's Prison is a special responsibility of the Governor Lisa Phillips, who was keen for government to progress this issue with a high priority. Governor Phillips said it is important to take the community along.

The Financial Secretary told Elected Members in a September Formal Legislative Council meeting that SHG had compiled a list of key projects, which would form the basis of the Capital Programme



for the next 3-5 years. Required infrastructure was estimated at a cost of around £50 million, which included some quite critical and basic infrastructure needs, including the new prison.

But there is no funding on-island for a new prison. A priority bid will have to be made to DfID for this.

Prior to the Oct. 3 meeting, Councillors had visited the Jamestown Prison as well as the two proposed sites (three sites had originally been proposed; however, an initial environmental assessment deemed one to be unviable because it was within the Millennium Forest Nature Reserve).

There is no concept design yet for the sites – all that is being looked for is suit-

ability. Once a site has been determined, a full Environmental Impact Assessment must be carried out.

In 2013, over 50 signatures were collected from Half Tree Hollow (HTH) residents petitioning the government against constructing a Prison at Sundale. The petition was turned down. "There is no plan B," it was said. But later, SHG decided they wanted the "best possible prison for St Helena," and that the Sundale site wasn't suitable. Lessons were learnt after the HTH consultation, and if the public has concerns about the new prison sites, turning up to the upcoming public consultations is advisable. Watch The Sentinel for updates.

NOTICE BOARD



St Helena
Government

PUBLIC TRANSPORT SERVICE EXTENDED TO AIRPORT

With the inaugural flight due to arrive at St Helena this Saturday, 14 October 2017, St Helena Government has negotiated with the Public Transport Service Provider to operate a service to and from St Helena Airport on Saturdays and the second Sunday of each month to coincide with flight arrival and departure check-in times.

The new service will incorporate the following journeys:

Route	Journey
A	Jamestown to Airport Terminal via Alarm Forest and Longwood
B	White Gate to Airport Terminal via Scotland, Rosemary Plain, HTH, Jamestown, Alarm Forest and Longwood
A2	Airport Terminal to Jamestown via Longwood and Alarm Forest
B2	Airport Terminal to White Gate via Longwood, Alarm Forest, Jamestown, HTH, Rosemary Plain and Scotland

The Airport Service Timetable along with the full Public Transport Timetable is available on the SHG website at: <http://www.sainthelena.gov.sh/transport-and-infrastructure-division/>. Hard copies will be available from the Customer Service Centre and Tourist Office in Jamestown.

#StHelena #PublicTransport #AirportService

<https://www.facebook.com/StHelenaGovt/>

<https://twitter.com/StHelenaGovt>

SHG

9 October 2017

Blue Hill Community Center Dance



All welcome!!

Friday, 20 October

8:30pm-1:30am

Music by JC & the "Double D's"

Hot tasty snacks on sale

Entry price £1.50

Come kick your heels up!!!



MOONSHINES BAR
THIS WEEKEND



**Saturday 14th
October**



A dance will be held in aid of cancer awareness starting from 8.30pm, music will be provided by Colin Peters & entrance fee will be £1.00 per person, hope to see you there.

Sun 15th October

Bar will open from 3pm.

THE CORDEAUX YEARS – PART 5

Harsh treatment is meted out to the Sultan of Zanzibar.

Ian Bruce, Contributed

Amongst the arrivals were three political exiles from Kenya including Sebe and Ayouls bin Mbaruk, sons of Mbaruk bin Rashid of Gasi. The latter was a Mazrui chief, who had resisted the British creation of the East Africa Protectorate in 1895 from the East African coastal strip of Kenya, including Mombassa. This began over a dispute about the succession within the Mazrui clan, the British intervening against the wishes of the Muslim majority. Mbaruk flew a German flag and supplied his men with arms given by Germans. The British brought troops from India and it took nine months of hard fighting to subdue the uprising. Mbaruk caused greater problems for the British in Kenya than Khalid in Zanzibar. Ultimately, the result was the same, Mbaruk and his sons taking refuge in German East Africa where he died. Like Khalid, these sons were captured when the British invaded German East Africa.

Governor Cordeaux had cabled London the previous March to confirm he could arrange to receive the exiles, but later that month left the island for his sick leave and seems not to have informed acting governor Dixon. The latter complained the arrival of these exiles was entirely unexpected and in the absence of any instructions had placed them in military custody under guard in the lower block of the Officers Quarters (today Pilling School). Had the Colonial Office not instructed the disposal of the camp for the Egyptian “undesirables”, Dixon would presumably have housed Khalid’s party there.

Dixon imposed a stringent eleven-point set of rules. These required the exiles to immediately obey instructions by the officer in charge, confine themselves strictly to their grounds, and maintain all rooms, passages (subject to twice-weekly inspections) and the yard (inspected daily) in a scrupulously clean condition. They were also told to refrain from any communications outside their own party and to limit their food consumption to a full ration for the men, a half for women and quarter rations for children.

Correspondence from 1920 reveals that the annual budget to feed and clothe all the exiles was only £120.

This compares with a budget of £12,000 (at early nineteenth century prices) for Napoleon’s party of 28

French exiles – Napoleon complained this was insufficient and demanded £20,000.

Dixon also imposed censorship restrictions on the St Helena Guardian from publishing anything about the exiles, ordering that complete copies had to be censored before being printed. On 25 October 1917, the newspaper notified its readers about this without explanation, presumably because this would have been censured. Given the speed with which news is still verbally exchanged on the island, it is debatable whether the government gained very much from its action. This secrecy says much about the military minds then controlling the island. In one respect the policy was all too successful, very little information about Khalid and his party today existing in the Jamestown archives.

Khalid sent several appeals to be allowed to return to East Africa, never asking to go to Zanzibar. The first in December 1918 comprised three pages of Arabic addressed to King George V and lamented “We cannot live on this island because we are people from East Africa, the climate of this island is not agreeable to us and it is dangerous to our lives, and there no Muslims [...]”. It is not known whether any response was given to this. A second appeal was sent to Governor Cordeaux in October 1919, who by now had returned to the island: “[...] there are no Muslims or mosque or a Muslim who makes the necessary Muslim’s affairs when one dies, to be found on this island of St Helena. [...] If my above request is not granted I beg the government to permit my women and children to return to their home so that they may not neglect their religious usages for my sake.” Based on the advice of Major F.B. Pearce, the first Resident in Zanzibar, this was rejected because the ninth Sultan Khalifa II bin Harub Al-Said was opposed to the return of Khalid to the African continent. Khalid and his companions continued to languish in their quarters until 11 February 1921 when the Secretary of State for the Colonies ordered that Khalid’s party, now numbering 21, should be shipped to the Seychelles, located in the Indian Ocean some 1,250 miles from the Kenyan coast. By this date, the Seychelles was awash with other royal exiles including Otumfuo Nana Prempeh I, King of Ashanti exiled in 1896; Musa Mollah, King of Fullader, exiled from Gambia in 1916 for enforcing slavery and Chwa II Kabalega, King of Bunyoro in Uganda and exiled in 1899.

Sayyid Khalid, “Pretender” of Zanzibar



The climate here was presumably more equitable, although the Muslim faith was no more practised at the Seychelles than at St Helena. The British believed Khalid was in possession of money or other valuables because at the Seychelles he was given no money to feed or support his party. He appealed that all his assets were in East Africa and inaccessible. In April 1922 a decision was made to send him to Mombassa, Kenya, where he died on 19 March 1927 at the age of 53.

Note: A complete and full referenced version of this article can be read on a section of the Island Info website, <http://sainthelenaisland.info/ianbrucethe-cordeauxyears.pdf>

Next week: Defence and plans for the island to be a key part of Empire’s wireless communications network.

Impact of German fleet’s visit and outbreak of war. St Helena’s war dead.

NOTICE BOARD



ASI - HLE AIR SERVICE FAQs

Why do we need this service?

This air service is to enable employers on Ascension to continue to fulfil their contractual obligations, to provide access for their Saint employees back to St Helena. Currently the RMS provides the access route, however this is due to be decommissioned in early 2018. It will also ensure the continuation of transport links between the two sister islands.

With the re-routing of the Voyager A330, several employers will also send their employees and contractors seeking to get to the UK via this route and St Helena's service to Johannesburg.

When is the commencement date for scheduled air services between St Helena and Ascension?

The inaugural flight for Airlink's scheduled air service from St Helena to Ascension will take place on Saturday 18th November 2017. The aircraft will stay overnight on Ascension and will return to St Helena on Sunday 19 November 2017. Thereafter the service will operate on a monthly basis on the second weekend of the month.

What will be the frequency of the flights?

The flight will operate on a monthly basis.

What are the flight times/schedules?

The proposed flight schedule is shown below. All times are shown in UTC (co-ordinated universal time) and have been converted to the local times at the airports involved for ease of reference.

Airport	Arrive/Depart	UTC/GMT	Local time
JNB	Depart 0700	0900 (Central African Time/GMT+2)	
WDH	Arrive 0900	1000 (West African Time/GMT +1)	
WDH	Depart 0930	1030 (West African Time/GMT +1)	
HLE	Arrive 1315	1315 (GMT)	
HLE	Depart 1430	1430 (GMT)	
ASI	Arrive 1630	1630 (GMT)	
Night Stop			
ASI	Depart 1115	1115 (GMT)	
HLE	Arrive 1315	1315 (GMT)	
HLE	Depart 1430	1430 (GMT)	
WDH	Arrive 1805	1905 (West African Time/GMT +1)	
WDH	Depart 1840	1940 (West African Time/GMT +1)	
JNB	Arrive 2030	2230 (Central African Time/GMT+2)	

Making a Booking:

How can I book my ticket?

Tickets will be available only through the Ascension Island Travel Agency; tickets can be requested through the AIG website: <http://www.ascension-island.gov.ac/>.

Why does the AIG website look different?

AIG is currently redesigning its website; therefore some areas may still be under construction. However this will not affect people wishing to book tickets.

When can I start booking my ticket?

The ticket system will be open from 9.00am (GMT) Friday 6th October 2017.

How far in advance can I book my ticket?

You will be able to request tickets for any of the flights on the current schedule, up to October 2018.

When will my ticket booking be confirmed?

For most flights, tickets bookings will be confirmed within the last 3 months prior to the flight departure date.

For the Christmas Flights (Dec 10th ASI- HLE & Jan 13th HLE- ASI), ticket bookings will be confirmed within the 8 weeks prior to the flight departure date.

Why can't my ticket be confirmed at the time of booking?

This service has been paid for by the Ascension employers so they can fulfil their contractual obligation to provide access for their employees back to St Helena. Therefore priority will be given to these bookings before seats being released for individual travel, at the 3 month point.

When is the last point I can book a ticket for a specific flight?

The cut-off point for any ticket bookings is 13.00 (GMT) Thursday before the Saturday on which the flight is scheduled to arrive. Ticket bookings will not be accepted beyond that the point.

Can I book tickets for both ASI- HLE service and HLE- JNB from the same place?

No, as the Ascension Island air service is under a separate charter agreement, you will need to book any flights from St Helena to South Africa separately.

What is the cost of a flight to / from Ascension Island?

As this is a chartered flight there is a standard rate for tickets, applicable to all travellers over the age of 2 years. Those wishing to fly between Ascension and St Helena will be able to purchase a ticket at the following rates (including all St Helena taxes):

A return ticket - £845 (£728 + £117 St Helena Tax)

A southbound (ASI- HLE) single ticket - £415 (£365 + £50 St Helena Tax)

A northbound (HLE- ASI) single ticket - £430 (£363 + £67 St Helena Tax)

For Children aged 2- 12 years, the passenger service charge in St Helena is reduced by 50%. Therefore the prices are as follows:

• A return ticket - £836.50 (£728 + £108.50 St Helena Tax)

• A southbound (ASI- HLE) single ticket - £415 (£365 + £50 St Helena Tax)

• A northbound (HLE- ASI) single ticket - £421.50 (£363 + £58.50 St Helena Tax)

Information for Passengers



NOTICE BOARD

What is the check-in time?

The check-in time for passengers departing both St Helena Airport and Wideawake Ascension, on an Airlink flight will be 2 hours prior to the published flight departure time.

For passengers travelling to St Helena (not from Ascension), check-in times for international departures from Johannesburg or Cape Town are normally 3 hours prior to the published flight departure time.

Those passengers that are travelling from further afield to connect with the flight at Johannesburg or Cape Town should seek advice from their travel agent. Passengers should allow sufficient time to connect with onward flights. There is a minimum 1 hour connection time at both OR Tambo International Airport in Johannesburg and at Cape Town International Airport. If in doubt, passengers may wish to consider an overnight stop.

What is the baggage allowance?

Hold baggage, maximum of 20kgs per passenger

Cabin baggage, maximum of 8kgs per passenger

Can pets be transported on the flight?

This service will not be offered in the initial stages of the air service to St Helena and passengers wishing to bring pets to the Island should continue to use the RMS St Helena or the Falkland Island Resupply Ship (FIRs) in the first instance.

Is there an in-flight entertainment system?

No, however, passengers will be able to use their personal electronic devices.

Is there in-flight catering?

Soft drinks, teas and coffees will be available (free of charge?) but no food will be served.

I am a nervous flyer. Should I be worried about windshear at St Helena Airport?

There has been extensive work undertaken to understand and mitigate the potential for windshear at St Helena Airport. Safety is everyone's number one priority. The decision on whether a flight takes place as scheduled rests with the pilot - flights will only take place when the pilot is confident that conditions are favourable.

How long will the RMS operate for?

There will be a period of overlap between the current RMS service and the St Helena Air Service. Further information will follow.

Can I transfer my ticket from the RMS to the flight? Will charges apply?

Passengers booked to travel on the RMS St Helena will be able to transfer their ticket to the St Helena Air Service. No transfer fees will apply. However, there may be a fare differential chargeable. The no transfer fee offer will cease on 23rd October 2017.

Whom can I contact for further information?

Please contact the Ascension Island Travel Agency: flight.bookings@ascension.gov.ac or tel: +247 66500.

Ascension Island Government

Administrator's Office

Georgetown

Ascension Island

2nd October 2017



ASI – HLE Air Service Announcement Ticket System 'go live' date

Following last weeks release of the schedule and ticket prices for the monthly Ascension to St Helena air service; AIG are pleased to announce that the AIG- run ticket system will be open from 9.00 am (GMT) Friday 6th October 2017.

As this is a chartered air service paid for by the main Ascension employers, most tickets are reserved for the employers needs. However spare capacity will be sold. Prospective travellers will be able to request tickets for any of the upcoming flights, via the Ascension Island Governments website: <http://www.ascension-island.gov.ac/> under the „Visiting the Island section.

Please note that due to the limited number of available seats and the need to take into account employers operational requirements; confirmation of bookings will only be given within 3 months prior to the flight date. For the 10th December 2017 ASI-HLE and the 13th January 2018 HLE- ASI (‘The Christmas Flights’), confirmation of booking will be given within the 8 weeks prior to the flight date.

As this is a chartered flight, there is a fixed price for tickets, applicable to all travellers over the age of 2 years. Those wishing to fly between Ascension and St Helena will be able to purchase a ticket at the following rates:

- A return ticket - £845 (£728 + £117 St Helena Tax)
- A southbound (ASI- HLE) single ticket - £415 (£365 + £50 St Helena Tax)
- A northbound (HLE- ASI) single ticket - £430 (£363 + £67 St Helena Tax)

For Children aged 2- 12 years, the passenger service charge in St Helena is reduced by 50%. Therefore the prices are as follows:

- A return ticket - £836.50 (£728 + £108.50 St Helena Tax)
- A southbound (ASI- HLE) single ticket - £415 (£365 + £50 St Helena Tax)
- A northbound (HLE- ASI) single ticket - £421.50 (£363 + £58.50 St Helena Tax)

Please note that the above ticket prices are for the ASI – HLE service only, anyone wishing to travel onto South Africa will need to purchase a separate ticket for that flight from SA Airlink or their travel agent.

Please see accompanying FAQs for further details or contact the Ascension Island Travel Agency: flight.bookings@ascension.gov.ac or +247 66500.

Ascension Island Government, 2nd October 2017



NOTICE BOARD



TRAINING IN USE OF HUMANE GUN

In-line with the new Food Safety Ordinance, ANRD will be offering training and certification in the use of humane guns for the slaughter of cattle, sheep, goats and pigs. All people using a humane gun to slaughter animals will need to be certified when this new legislation is implemented shortly.

Training will take place on the following dates:

- Monday 23rd October from 5.30pm till 8pm at Kingshurst Community Centre (St Pauls).
- Monday 30th October from 5.30pm till 8pm at Harford Community Centre (Longwood).
- Wednesday 1st November from 5.30pm till 8pm at Levelwood Community Centre.
- Monday 6th November from 5.30pm till 8pm at Levelwood Community.

If you have not already registered your interest and had your place confirmed, please contact Veterinary and Livestock Services Officer, Ken Henry on telephone 24724.

DOG AND CAT MICROCHIPPING AND NEUTERING SERVICES

ANRD's Veterinary & Livestock Section would like to remind owners of cats and dogs that their pets must be microchipped and licenced by the age of seven months.

The Veterinary Surgeon offers cats and dogs neutering, with the microchip inserted at the same time. If a cat has been neutered, the licence is free and issued once for life.

Microchipping costs £3.

Neutering costs £5 for a male cat and £7 for a female cat. Male dogs cost £8 and females dogs cost £12.

For further information or to make an appointment pet owners are asked to contact the Veterinary & Livestock Section or the Receptionist at Scotland on Tel No. 24724 not later than Friday 06 October 2017.



NOTICE BOARD



MV ALBATROS

Date: 31 October to 1 November 2017

Estimated time of arrival: 31 October at 2:00pm; estimated time of departure: 1 November at 1:00pm

Maximum Capacity: 800 passengers and 665 crew

Please note that actual number of passengers and crew on board will be confirmed nearer the arrival date.

MV BOUDICCA

Date: 16 February 2018

Estimated time of arrival: 8:00am; estimated time of departure: 6:00pm

Maximum Capacity: 820 passengers and 329 crew

Please note that actual number of passengers and crew on board will be confirmed nearer the arrival date.

MV SILVER CLOUD

Date: 2 April to 3 April 2018

Estimated time of arrival: 2 April at 7:00am; estimated time of departure: 3 April at 5:00pm

Maximum Capacity: 296 passengers and 222 crew

Please note that actual number of passengers and crew on board will be confirmed nearer the arrival date.

MV ASTOR

Date: 5 April 2018

Estimated time of arrival: 7:00am; estimated time of departure: 1:00pm

Maximum Capacity: 578 passengers and 260 crew

Please note that actual number of passengers and crew on board will be confirmed nearer the arrival date.

MS EUROPA 2

Date: 28 October 2018

Estimated time of arrival: 8:00am; estimated time of departure: 6:00pm

Maximum Capacity: 706 passengers and 416 crew

Please note that actual number of passengers and crew on board will be confirmed nearer the arrival date.

MV AMADEA

Date: 5 November 2018

Estimated time of arrival: 9:00am; estimated time of departure: 5:00pm

Maximum Capacity: 624 passengers and 292 crew

Please note that actual number of passengers and crew on board will be confirmed nearer the arrival date.

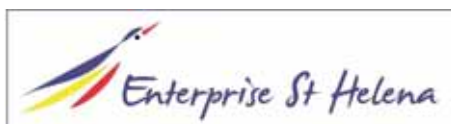
MV THE WORLD

Date: 10 December to 12 December 2018

Estimated time of arrival: TBC; estimated time of departure: TBC

Maximum Capacity: 100 passengers and TBC crew

Please note that actual number of passengers and crew on board will be confirmed nearer the arrival date.



For more information please contact Juliet Williams on 22158 or email address juliet.williams@tourism.co.sh

Enabling Tourism and Economic Growth

Head Office | ESH Business Park | Ladder Hill | Tel: +290 22920 | Fax: +290 22166 | Email: info@esh.co.sh



Visit us online Business and Investment: www.investinsthena.com | Tourism: www.sthelenatourism.com

NOTICE BOARD



Enterprise St Helena (ESH) in conjunction with various stake holders over the past three years has undertaken projects that were aimed to enhance our island's capital Jamestown.

In 2016, ESH completed renovations on the 19th Century grade 1 listed building, the **Jamestown Market**, converting it into an attractive environment for visitors and traders alike. Works included, structural alterations, stabilization and a 30% expansion of business units. It was at this time, the asbestos roof was painted to conform with modern day asbestos conditioning.

The Jamestown market is now home to 13 businesses offering a range of products and services—also offering occasional carts for use by part-time businesses.

Jamestown Main Street Project commenced in 2016 to enhance the appearance and access within the town and making it more pedestrian friendly.

To date pavement works throughout Main Street, namely, outside of the Malabar and the Mantis St Helena Hotel have been completed. These works have incorporated drop kerbs for ease of mobility and improved safety.

The overview is to complete pavement works from the Hive Shop to Church Lane, enabling an safe uninterrupted thoroughfare for the community members with mobility needs.

These recent works outside of the Mantis St Helena hotel has incorporated two drop kerbs. Original flag stones were uncovered during the excavation phase and has now been reused on site. The original stone paving slabs were also uncovered, dating back beyond 1914. Despite the intention to relay these, the surface of these stones were unfit for today's public safety standards. The National Trust has kindly agreed to house these historic slabs for safe keeping until the time arises where they can be best used elsewhere. ESH would like to acknowledge the support and guidance received from, Highway's Authority, Environmental and Natrual Resources Department, the St Helena National Trust, The Jamestown Museum, Agmac and the awarded contractor Lime Brite.

Further enhancing Jamestown, and making it an enjoyable place for locals and visitors alike, ESH has also increased the number of picnic benches in the **Castle Gardens**.

Tourism Signage around the island

To date 50 Tourism related signs have been manufactured and installed around the Island. The locally produced signs can be identified as white lettering on a green background and they have been predominantly placed to highlight a tourism attraction. To date 25 interpretation panels, providing information on local attractions have been funded and a further 18 are scheduled to arrive in late 2017.



Enabling Tourism and Economic Growth

Head Office | ESH Business Park | Ladder Hill | Tel: +290 22920 | Fax: +290 22166 | Email: info@esh.co.sh



Visit us online Business and Investment: www.investinsthelena.com

Tourism: www.sthelenatourism.com



NOTICE BOARD



Contact Us:

Business Development and Investment

Email: Info@esh.co.sh | Telephone: +290 22920

Tourism Enquiries

Email: enquiries@tourism.co.sh | Telephone: +290 22158

St Helena Hospitality Up-Skilling

Email: Michael.Harper@esh.co.sh | Telephone: +290 22920



Enabling Tourism and Economic Growth

Head Office | ESH Business Park | Ladder Hill | Tel: +290 22920 | Fax: +290 22166 | Email: info@esh.co.sh

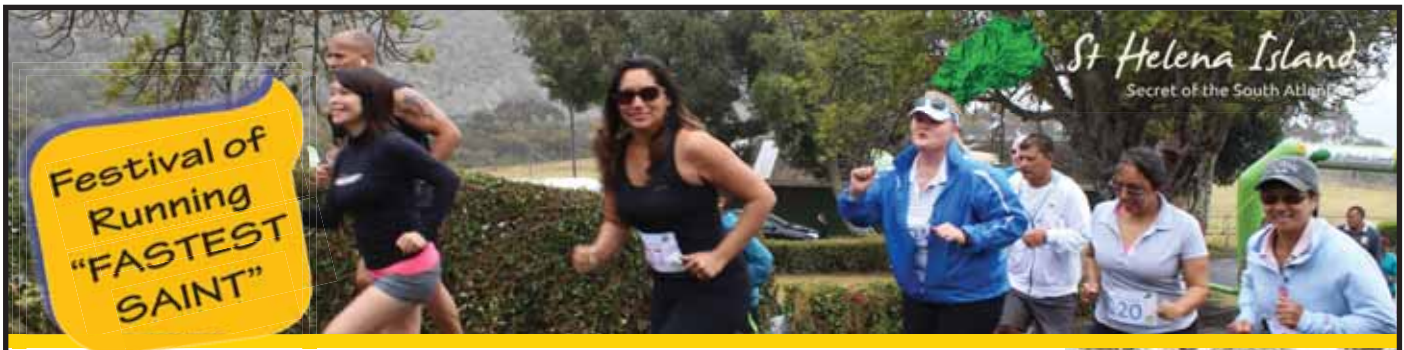


Visit us online Business and Investment: www.investinsthelenas.com

Tourism: www.sthelenatourism.com



NOTICE BOARD



St Helena Tourism is launching the "Fastest Saint" category for the first St Helenians to pass the finish line for the Festival of Running events.

Sponsored by multi Gold Medallist and Record Breaker Martin Collins, the Fastest Saint title is obtainable for all events during the Festival: Trail Run, Marathon, Half Marathon, 10km, 3km, Jacob's Ladder Challenge and Triathlon.

The Fastest Saint for the 42km Marathon will also be awarded £100 from Martin Collins.

A Saint Helenian or Saint is referred to persons with St Helenian heritage or status.



For further information please contact: Tourism Officer, Juliet Williams on telephone 22158 or email on juliet.williams@tourism.co.sh

Enabling Tourism and Economic Growth

Head Office | ESH Business Park | Ladder Hill | Tel: +290 22920 | Fax: +290 22166 | Email: info@esh.co.sh



Visit us online Business and Investment: www.investinsthelenia.com | Tourism: www.sthelenatourism.com



MAMMOGRAPHY MACHINE

THE CANCER SUPPORT & AWARENESS GROUP IS PLEASED TO ADVISE MEMBERS OF THE PUBLIC THAT THE SUM OF £20,000 (TWENTY THOUSAND POUNDS) WAS DONATED TO THE HEALTH DEPARTMENT IN MARCH OF THIS YEAR TOWARDS THE COST OF THE MAMMOGRAPHY MACHINE - NOW INSTALLED AND OPERATIONAL AT THE GENERAL HOSPITAL. FUNDRAISING HAS BEEN ONGOING SINCE 2006, BUT DUE TO PROBLEMS EXPERIENCED DURING THE EARLIER YEARS WITH THE PURCHASE OF A MACHINE, £20,000 WAS DONATED TOWARDS THE COST OF THE LAPROSCOPIC CAMERA AND A FURTHER £5,000 (FIVE THOUSAND) TOWARDS THE COST OF THEATRE INSTRUMENTS. OTHER SMALLER AMOUNTS HAVE ALSO BEEN DONATED TO THE DEPARTMENT.

AS ALREADY ADVISED BY THE DEPARTMENT, LADIES BETWEEN THE AGE OF 50 TO 70 YEARS WILL BE CONTACTED AS PART OF THE SCREENING PROGRAMME FOR EARLY DETECTION OF BREAST CANCER. THE GROUP SINCERELY HOPE THAT YOU WILL TAKE ADVANTAGE OF THIS PROGRAMME. THOSE PATIENTS WHO HAVE ALREADY HAD BREAST CANCER CAN NOW HAVE A FOLLOW UP CHECK. ANYONE CONCERNED ABOUT A HEALTH ISSUE SHOULD BOOK AN APPOINTMENT WITH YOUR DOCTOR WHO WILL THEN MAKE THE NECESSARY REFERRALS.

THE GROUP WILL CONTINUE TO RAISE FUNDS TO ENABLE THEM TO PROVIDE FURTHER SUPPORT TO ALL KNOWN CANCER PATIENTS, FINANCIALLY OR OTHERWISE, ALSO, TO HELP THE HEALTH DEPARTMENT WITH FUNDING TOWARDS THE PURCHASE OF ANY OTHER CANCER RELATED EQUIPMENT OR OTHER SPECIAL CANCER RELATED REQUIREMENTS.

ANYONE WHO HAS BEEN DIAGNOSED WITH CANCER AND IS NOT ALREADY ON THE CANCER CHARITY REGISTER - BUT WOULD LIKE SOME SUPPORT - CAN DO SO BY CONTACTING ANY OF THE GROUP MEMBERS.

FURTHER FUNDRAISING AND AWARENESS EVENTS FOR OCTOBER

THURSDAY EVENING 12TH OCTOBER AT 7PM - HEALING AND THANKSGIVING SERVICE AT ST JOHNS CHURCH IN UPPER JAMESTOWN - ALL ARE WELCOME

SATURDAY NIGHT 14TH OCTOBER - DANCE AT MOONSHINES BAR - ALL ARE WELCOME

THURSDAY 19TH OCTOBER STARTING AT 11AM - STALL IN FRONT OF THE CANNISTER. DONATIONS OF CUP CAKES AND OR POT PLANTS WOULD BE APPRECIATED. PINK PANTHER AND FRIENDS WILL DO THEIR WALKABOUT IN LOWER JAMESTOWN. ANYONE WHO WANTS TO DRESS IN A CHARACTER OUTFIT IS WELCOME TO JOIN IN.

18.30PM - GINA AND MARTINS QUIZ NIGHT AT THE MULE YARD - TEAMS OF 4 TO 8 ARE WELCOME TO JOIN IN AT £1 PER PERSON. - PRIZE FOR WINNING TEAM. MORE DETAILS TO FOLLOW.

THE HIGH TEA SCHEDULED TO BE HELD AT PLANTATION HOUSE ON SATURDAY 21ST OCTOBER IS NOW CANCELLED AND IS BEING RESCHEDULED FOR A LATER DATE.

SUNDAY 22ND OCTOBER - SPONSORED PINK WALK STARTING FROM PLANTATION HOUSE. REGISTRATION WILL START AT 2PM. FURTHER DETAILS TO FOLLOW.

MONDAY 30TH OCTOBER - MUFTI DAY - CELEBRATE SUPERHEROES, WE ALL KNOW SOME AND ARE PROUD OF THEM, INDEED YOU MAY BE ONE SO WEAR A COLOUR OR OUTFIT OF YOUR CHOICE TO REPRESENT YOUR SUPER HERO

Library Revamp Running Late

Public library shipment delayed, so reopening delayed

Andrew Turner, SAMS

The renovation works for the Public Library in Jamestown have been completed on schedule.

However, because of a delay in receiving new equipment and furniture from overseas, the Library will not be reopening on the advertised date of Wednesday, Oct. 11.

The Library has been closed since July, and it is now unknown when the Library will reopen.

This is the first time the Library, which is the oldest library in the southern hemisphere, has been refurbished in over 10 years.

The Library was renovated due to "poor conditions," and to give it a "more modern look."

New shelving and furniture, which is currently still overseas, will be added to the interior. An SHG press release said the furniture will make the area comfortable and relaxing. The addition of a new carpet is also meant to make the area quieter.



There will also be a new computerised system that will make the exchange of books – also called the "circulation process" – a lot easier for the public. Each individual who would like to take out a book will have a card, which will be used electronically to issue the book.

Work has begun to put the books' data on the system.

"What we want to do is every book, before we put it on the shelf, we want to put it into the electronic system," said Head Librarian Jill Young. "When people come into borrow books in the future, they won't have to bring all those little cards with them, we will just swipe them through the system. That is another big job to do."

A Jury of Peers

Trials by jury debated in ExCo

Andrew Turner, SAMS

In the ExCo meeting Tuesday, Oct. 3 members discussed a proposed change to St Helena's jury system.

The Chief Justice had recently raised concerns about the lack of convictions in jury trials: In the last three sittings of the Supreme Court, only one jury trial resulted in a conviction.

As everyone knows everyone on St Helena, finding jury members who know nothing about a case, or those involved in the case, is nearly impossible. The jury system altogether, as well as the jury pool, is now being looked at.

Therefore, at the Oct. 3 meeting, councillors proposed several options in an effort to address the Chief Justice's concerns.



"Every member around the table had their say on this one," said Councillor Russell Yon.

Currently, potential jurors are selected only from the Register of Electors.

ExCo considered extending the jury pool by making it compulsory to sign onto the Register of Electors, moving to trial by judge alone or trial by judge with two Lay Magistrates.

Other options included increasing the Magistrate's power for some offences, or adopting a Jurat system where people who have formally been involved in the

legal system – for example as Lay Advocates or Magistrates – would act as a jury.

ExCo agreed the options should be considered for expanding the jury pool, as opposed to eliminating jury trials altogether.

"This was a robust debate and members felt that the jury system is a civic responsibility and should remain," Councillor Yon said. "It was agreed that options should be explored to consider how the pool of jurors should be expanded, and that there should be awareness raised about the civic responsibilities."

NOTICE BOARD

Wreath Laying Ceremony

**A commemoration honouring the Boer War Prisoners
that were detained and died on the island, will be held on
Sunday 15th October 2017 at 11:00am
at The Boer Cemetery, Knollcombes.**

A wreath will be laid on behalf of AfriForum which is a civil rights Non-Government Organisation in South Africa that protects the rights of the minority Afrikaaners, and preserves their heritage and culture.

YOU ARE WARMLY WELCOME TO ATTEND.



Enabling Tourism and Economic Growth

For further information please contact:

Kelly Jonas on Email: kelly.jonas@tourism.co.sh or Telephone: 22158

Head Office | ESH Business Park | Ladder Hill | Tel: +290 22920 | Fax: +290 22166 | Email: info@esh.co.sh



Visit us online Business and Investment: www.investinsthelena.com | Tourism: www.sthelenatourism.com



Calling budding actors, singers and dancers
for the well-loved family musical

“The Wizard of Oz” at PAS on 8th & 9th March 2018

Easy auditions for speaking and singing
parts – Dorothy, Tin man, Lion, scarecrow,

wicked witch of the west, the Wizard of Oz, Glinda good witch, Aunt
Em & Uncle Henry will be on:

Saturday October 21st at 2pm at Jamestown Community Centre.

All welcome age 5 + (Please note change of date)

Chorus and Children’s munchkin chorus – no audition necessary!

To register interest and for further details email: creativesainthelena@gmail.com or
call 23988 / 25280





NOTICE BOARD

THE South Atlantic Media Services, Ltd.

www.sams.sh

SENTINEL



Is there something you're looking for, or you want to buy, exchange or sell for £500 or less? Then why not advertise with the Sentinel for free!

FREE CLASSIFIED ADVERTISING CONTINUES...

Ads of 30 words minimum or 50 words maximum accepted

FOR SALE: Plasma Light - £15
Approximately 14 inches. Plasma light throws static light effect when touched.
Contact Tina Yon-Stevens

FOR SALE: WHITE ROVER CAR - £350
Reg no 313 - 1400 cc engine. Manual, Engine starts, body work good but needs a little attention to the engine. not insured and no road licence call Bessie Peters on 24946

FOR SALE: 2 x brand new tyres, tubeless radial size 205/45ZR17
Price: £80 each.
1 x Honda petrol 4-stroke Lawnmower, 16 Inch cut, which has hardly been used since brand new. Reason for sale - got a strimmer.
Price: £280 Contact Tony on 63715

FOR SALE: For sale GCSE & IGCSE Revision Guides Subjects: Chemistry, Geography, English Literature, English Language and workbook, Maths (higher linear) and biology. Also available is a Maths text book 1 and 2 (higher linear) and DVD tutorial videos. All material has been used but in good condition. If interested call 63535 after 5pm.

FOR SALE: 2 x side steps to fit a Toyota Hilux machine - £200. Contact Melvin Benjamin on tele. 23395

Contact



Tele: 22727 - Email: news@sams.sh

FOR SALE: 2 Brand new tyres for sale Size 175 x 65 x 14. - £50.00 each
call Bessie Peters on 24946.

FOR SALE: Samsung cash register - £250 Hardly used. In good condition. Call 25118 if interested.

WANTED: Indicators for a Motorcycle that you may be willing to sell. Contact Andrew Turner 51308

WANTED: Looking for an AQA A Level English Language student book by Dan Clayton, New or used. If you have one to sell or lend me then contact Gemma Lawrence

Connect
SAINT HELENA LTD



TIP OF THE WEEK...

Check for hidden leaks using your water meter.

Check the reading and then check it again after 2 hours when no water is being used.

If the meter reading is not the same, you may have a leak.

WIN A GREAT GIVE AWAY by collecting 3 GOLDEN TICKETS

50 random copies of this week's *Sentinel* will each contain 1 Golden Ticket

3 Golden Tickets, from 3 different weeks, will win you a

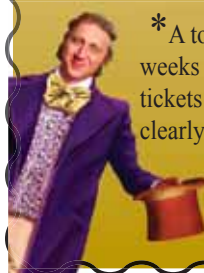
FREE MEAL FOR 2 AT
BERTRAND'S COTTAGE

2ND EDITION TICKETS IN
CIRCULATION THIS WEEK

Terms & Conditions

*A total of 3 tickets must be collected, from 3 different weeks (editions) of *The Sentinel*, to win. Each week's tickets will have the edition (e.g. 1st, 2nd, 3rd, etc.) clearly marked. 50 tickets will be released each week.

*The prize will be awarded to the first claimant to submit 3 tickets from 3 different weeks to the SAMS office in the Castle Gardens.



NOTICE BOARD



CELEBRATE SUPERHEROES



Superheroes, we all know some and are proud of them, indeed you may be one!

Represent your 'Superhero' in your choice of colour and outfit. Join us this year on the 4th Pink Walk in aid of St Helena Cancer Support & Awareness. Hosted at Plantation House, St Paul's, both walks leave via White Gate with the long walk route branching off to Sandy Bay Ridges and the short route to Scotland.

Registration of walkers will take place between 2pm and 2:45pm on Sunday 22nd October.

The walk will start at 3pm

Minimum Registration £5 or collect your sponsor form from:

Mia: 22699 Nicole: 23702 Marcie: 23888 Nicola: 25111 Tracey 24349



CONTRACT FOR SERVICES IN THE EDUCATION & EMPLOYMENT DIRECTORATE

The Education and Employment Directorate is seeking interest from persons who are able to offer a contract for service as a Part-time Assistant Librarian.

The successful applicant will be responsible to the Librarian for the provision of a Public Library Service. Hours of work will be on a shift basis, which will be agreed with the Librarian.

Applicants should have a love for reading, together with excellent customer service skills and some knowledge in IT. The ability to produce clear and accurate written communications is essential. Self-motivation, being a good team player, reliable and the ability to work independently are some of the personal attributes required for the role. Salary will be paid at the rate of £3.68 per hour.

For further details, interested persons can contact Mrs Jill Young, Librarian on telephone no 22607. E-mail Librarian@helanta.co.sh A list of duties for the above contract can be obtained from the Acting Executive Officer Administration at the Education Directorate, on e-mail santana.fowler@sainthelena.gov.sh

Expressions of interest should be submitted to the Acting Human Resources Officer at the Education Learning Centre or e-mail wendy.fuller@sainthelena.gov.sh by no later than 4pm on Tuesday, 24 October 2017.

The Education & Employment Directorate is committed to safeguarding and promoting the welfare of children and expects all staff to uphold these principles. All appointments are subject to a satisfactory medical check, references and vetting or DBS clearance. SHG reserves the right to have information provided on the application form independently verified.

SHG positively accepts applications from all members of the community regardless of race, gender, disability, age, sexual orientation, religion or belief, and will consider all applications on the basis of merit, in accordance with the person specification. All disabled applicants meeting the minimum criteria will be guaranteed an interview.

Mrs. Shirley Wahler Director of Education & Employment
10 October 2017



APPLICATIONS FOR DEVELOPMENT PERMISSION

NOTICE IS HEREBY GIVEN that an Application has been received in respect of the following proposals:

1. Application 2017/99: Full Planning Application for Construction of a Covered Area, Verandah and Lounge Extension to the Existing House, "Benjosh" Cow Path on Parcel 0453 Half Tree Hollow adjacent to Ms Gladys O'Bey. Applicant: Neil and Pam Joshua

2. Application 2017/100: Full Planning Application to Install a 2 Panel Notice Board, Outside the Market Building, on Parcel 080017 Jamestown adjacent to Anders Bowers. Applicant: Enterprise St Helena Ltd

3. Application 2017/101: Full Planning Application for Realignment of the Existing Road, Intersection at Mr Alan Hudson's Property (No. 101 Cardinal Drive) with the road leading towards Ambledale Workshop. Applicant: Roads Section, ENRD
Copies of the Applications and Plans may be inspected at the Planning Section, Essex House, Main Street, Jamestown, Monday to Friday, from 8.30am to 4pm.

Any person who wishes to make Representations on the above Application should make them in writing within 14 days, to the Planning Office, Essex House, Main Street, Jamestown or Email Karen-Isaac@enrd.gov.sh

Public Review Commencement Date : 12 October 2017

Public Review Closing Date : 27 October 2017

Riana De Wet
Chief Planning Officer

CONTRIBUTED ARTICLE

Homegoing Where Now? Part 2

Emma Dee, Contributed

So why have the remains consistently and constantly been sidelined and ignored? Is it perhaps that in 2016, shortly after the controversy of wind shear and other factors that were jeopardising the St Helena Airport, Government was unwilling to address the issue of the remains? Was the risk that Heidi's findings might damage Air Access' mandate that great? Why does it seem the Governmental view, therefore, is 'an Airport, or acknowledgement of the remains?'

The more one looks into this aspect of St Helenian history, the more parallels that start to appear.

The Vice Admiralty Court order to bring slave ships to St Helena completely changed the island's population and attitudes. So, too, might the opening of our airport.

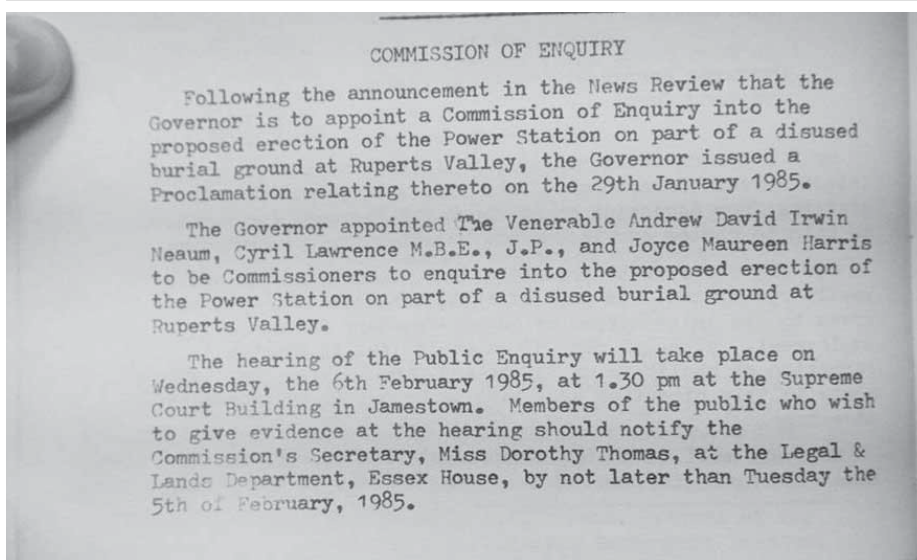
In 'The African Burial Ground in New York City Memory, Spirituality, and Space,' Andrea E. Frohne notes that "ownership [of sacred space] will always be at stake. In this respect, a sacred space is not merely discovered, or founded, or constructed; it is claimed, owned, and operated by people advancing specific interests."

Certainly, it has been noted time and again that the remains are, in death as in life, being used to make political points. But to the people I have interviewed during this series, the issue of the 9,000-13,000 Liberated African Remains is less about 'what should be done with the bones;' instead, it is more about St Helenians both young and old fully owning this aspect of the island's history.

The island fully owns and recognises the historical ties with Napoleon. While many St Helenians do recognise the historical ties with the Liberated African Remains, the island as an entity does not recognise the ties with its African heritage – Dinizulu, and the later "Poll Tax Prisoners" – like it recognises Napoleon.

Comparisons are sometimes drawn between our burial sites and the African Burial Grounds discovered in New York. There, marches and demonstrations were held. But here, things work differently. Things take time. People don't readily mobilise and take to the streets; people don't readily speak up against Gov-

High Knoll Fort; The site of more Liberated African remains? Very little is known about this Depot and the secrets it holds.



The same old story? An announcement in the News Review from 1985 with regards to the remains in Rupert's Valley.

ernmental pressure that seems to be keeping the cultural ties with the remains from creeping to the surface.

But already, St Helena is seeing more conversations, more opinions and more ideas about the remains; and this started long before the group of four that will be featured in the in-production PT Film movie. Many islanders have been trying for years to get a decision enacted in regards to the remains, and at least two groups worked hard to address the issue before this new group formed.

Currently, Annina is working with Creative Saint Helena to get Primary school children to write 325 poems and short stories for an exhibition on the people whose remains are now a hot topic. A short animation is also

in the works, to hopefully tell the story of a young African boy brought to St Helena and liberated.

As we continue to debate this issue, the DNA of the remains is perhaps slowly degrading. Theoretically, DNA under the most ideal conditions can survive for a maximum of one million years. Yet, like all living tissue, it degrades in the presences of heat, sunlight, water and oxygen. Inside the Pipe Store, resides the first generation Liberated Africans, with their unique data make-up; if we aren't careful, by the time our Government decides its right to study their genetic makeup, the DNA could have rotted away.

A temperature-controlled container– much like the Archives, with

CONTRIBUTED ARTICLES/YOUR LETTERS

benches and areas for study from qualified and interested people – has been suggested. Whatever is decided, surely it must be better than allowing this evidence of the past to melt through our fingers.

For my final piece next week, I ask readers to write in. I've been lucky enough to research and write this series, but this isn't ultimately my story. It's yours; your ownership of this part of St Helenian history. Ultimately, this story is not just about what to do with the remains; it's about the island and Government's overall involvement in this aspect of our roots. This is a long-standing and complicated issue, and through a compilation of opinions and facts from all across the island, perhaps we can find clarity.

Please feel free to contact me at emma.deel@btinternet.com or the paper at news@sams.sh.

St Helena Airport; are we sacrificing our past in the pursuit of the future?



The author of 'Homegoing – Where now? Part 1' would like to issue the following corrections with deepest apologies. John Clement was Head of Crown Estates, rather than Chief of Police, and wished to expand the prison in 2014. The National Trust is not a branch of SHG; while it has funding from the Government, it is completely independent.

"THANK YOU TO ALL SUPPORTERS OF THE WOMEN'S CORONA SOCIETY"

The Women's Corona Society held another FUND RAISING EVENT "WITH A DIFFERENCE". On Wednesday evening 4th October 2017 at the home of the Society's President (J. Patsy Flagg) the 8th session of THE SPONSORED BUSY HANDS saw some 17 eager people, entering

"Harlyn", with their sponsor forms & money and armed with items/materials etc to participate in their chosen activity, to keep their "HANDS BUSY" BETWEEN 7 – 9pm.

Cosily settled around the Dining Room table or in arm chairs in the Sitting Room, there was a flurry of interesting activities, some in deep concentration, others social-ly chatting while they worked.

Activities included – making a Latch Hook rug, writing a children's book, Knitting, Cross Stitch work, writing up minutes, special scarf and hedgehog Knitting, Crocheting, writing/addressing Christmas cards, sorting photos, marking students assignments and Lap-Top work for Teachers' Appreciation Day.

All these hobbies/activities for the benefit and enjoyment of each participant, but the Sponsor money collected by each of them, prior to this for Corona Society has been tremendous. A commendable £602.00 through Sponsor money and donations is the total, to date.

A few kind folk have promised further donations, and after a few expenses still to come it is foreseen that some £550.00 will be the profit raised. At the end of the 2 hour Sponsored Activity, The President/Organiser, thanked everyone for their effort, support and participation. She commented on the huge financial help these

extra funds will be, towards Corona's Senior Citizens Party and Christmas Vouchers among other

Community/Charity help to be undertaken during the year.

Prizes for the 3 people raising the most Sponsor money were then presented, by the Vice- Chairman, Mrs Dawn Thomas.

1st Mrs Coral Moyce – raised £80.00 2nd Miss Carolyn Richards – raised £76.00 3rd Miss Delray Yon - raised £46.00

Sponsor Money raised by other participants ranged from several lots of £40, £20+, £10 & £8. All very much appreciated. Every participant was then presented with a small token gift and THANKYOU CARD, acknowledging the amount they had raised.

The President then concluded by acknowledging and thanking the many people around the island and overseas who have supported this "Fund Raiser with a Difference", since it was first introduced in 1999. It started off being held in Community Centres/Halls – but this

is the 2nd year it has been held at "Harlyn". She sincerely hopes that she can repeat this in 2 years time and that it will be met with the same level of interest and participation – and of courseenjoyment.

The evening ended with Tea and Refreshments and the happy group dispersed for home and a well- earned night's sleep. RENEWED THANKS TO EVERYONE INVOLVED.

*J. Patsy Flagg (President)
Women's Corona Society*

Your Letters

Thank You St Helena

The RMS returns this afternoon and we board tomorrow. Our time on St Helena comes to a close but what a time it has been. We couldn't leave the island without saying thank you to all the Saints for sharing your lovely home with us. We have felt welcomed at every turn and have thoroughly enjoyed exploring St Helena and getting to know some of her people.

As we return to Canada we will continue to watch St Helena's progress as the flights begin and you say so long to your beloved RMS. Our hopes are that this next phase of St Helena's history will be a bright one filled with opportunity and prosperity while honouring your past and the rich history and tradition of this very special place.

*God Bless,
Peter & Julie Grierson (nee Henry)
Vancouver, Canada*



NOTICE BOARD

Rc SUPPLIERS

SUPPLYING YOUR EVERY NEED
CAPE TOWN SOUTH AFRICA

email :
info@rcsuppliers.co.za

Tel: 0216969361



Groceries

OFFICE, HOME AND
SCHOLASTIC STATIONERY



ELECTRICAL APPLIANCES



CORPORATE AND FAMILY CLOTHING



MUSICAL INSTRUMENTS



COMPUTERS, LAPTOPS, CELLPHONES & ACCESSORIES



The petition against the introduction of Same Sex Marriage Legislation that was launched on Thursday 5th October 2017 is not a Church versus State petition, but is a petition that belong to members of the public. This is been coordinated by Stedson Francis of Blue Hill.

The Baptist Church

Invites you & your family to join us for a
Special Family Guest Service

PLACE: HALF TREE HOLLOW
COMMUNITY CENTRE

DATE: SUNDAY 22ND OCTOBER 2017

TIME: 3.00 PM

Come along AND JOIN US FOR A
GREAT AFTERNOON OF WORSHIP and
FELLOWSHIP

Followed by fellowship tea
ALSO THERE WILL BE GUEST SINGERS
TO BRING YOU SOME GOOD GOSPEL
MUSIC!

SO WILL SEE YOU THERE !!!

NOTICE BOARD



St Helena
Government

SOCIAL & COMMUNITY DEVELOPMENT COMMITTEE PUBLIC MEETINGS

The Social & Community Development Committee will be conducting public meetings on the following legislation:

1. Marriage Bill:
 - a. Options
2. Welfare of Children's (Amendment) Ordinance:
 - a. Child Labour
3. New Domestic Abuse Bill

All meetings will start at 7.30pm. The public is encouraged to attend these meetings.

Venue	Date
Blue Hill Community Centre	Monday, 16 October
Jamestown Community Centre	Tuesday, 17 October
Kingshurst Community Centre	Wednesday, 18 October
Harford Community Centre	Thursday, 19 October
Sandy Bay Community Centre	Monday, 23 October
HTH Community Centre	Tuesday, 24 October
Silver Hill Bar, Levelwood	Wednesday, 25 October

Anyone wishing to make any comment on the proposed amendments to the draft legislation may do so in writing to the Chairperson, Hon Anthony Green, Social & Community Development Committee or via email: tony.green@helanta.co.sh by no later than Friday, 27 October 2017.

The draft legislation will be made available in hard copy at the Customer Service Centre in Jamestown from Monday, 16 October 2017, and will also be uploaded to the SHG Website.

Social & Community Development Committee
10 October 2017



Arriving on island on Saturday 14th October 2017 will be Mr Paul O'Sullivan, who is a private investor representing St Helena Corporation PLC as their Chief Executive Officer.

Paul will be on island for two days arriving on Saturday 14th October and leaving Sunday 15th October. Paul would like to meet with Key Stakeholders within the construction sector. The St Helena Corporation PLC is keen to invest into property and construction related projects.

Enterprise St Helena on behalf of Mr Paul O'Sullivan of the St Helena Corporation PLC, will be holding a meeting at ESH Ladder Hill Offices on Sunday 15th October 2017 commencing at 9am for 45 minutes.



For further information please contact Ryan Belgrove, Private Sector Development Manager at Enterprise St Helena on 22920 or mail ryan.belgrove@esh.co.sh

Enabling Tourism and Economic Growth

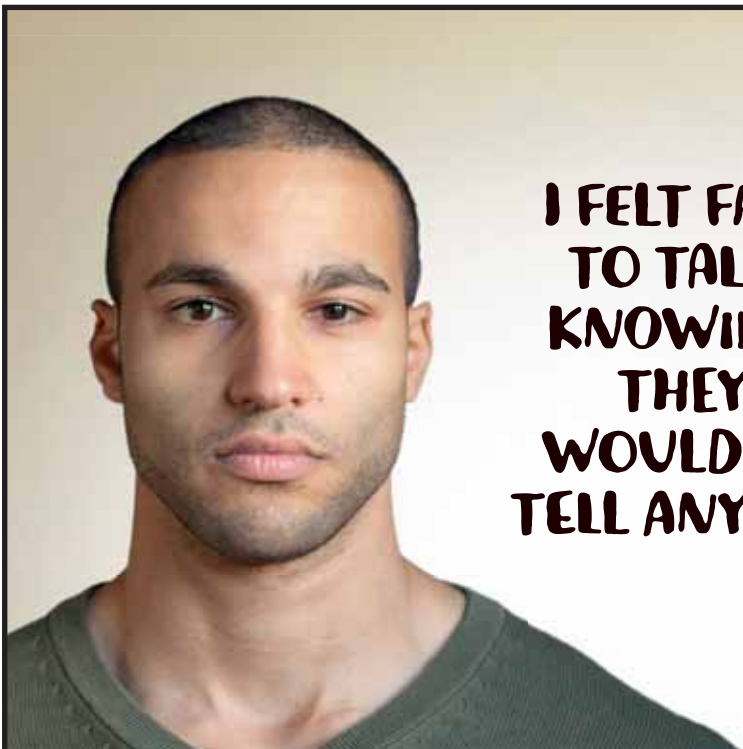
Head Office | ESH Business Park | Ladder Hill | Tel: +290 22920 | Fax: +290 22166 | Email: info@esh.co.sh



Visit us online Business and Investment: www.investinsthelena.com | Tourism: www.sthelenatourism.com



NOTICE BOARD



**I FELT FREE
TO TALK,
KNOWING
THEY
WOULDN'T
TELL ANYONE**

Talk to us – if things are getting to you.

We're always here – round the clock, every single day of the year.

A safe place – whatever you say stays between us.

Be yourself – whoever you are, however you feel, whatever life's done to you.



200 00



This number is **FREE** to call

Supported by



A registered charity

**JOIN US @anne's place FOR OUR
mouth-watering Spit Roast Pig
on 21st October 2017**



BAR OPEN @ 6:30pm

MEAL SERVICE BEGINS @ 7:00PM



The meal will consist of

Spit roast Pig

Accompanied with vegetables, Roast potatoes

Salad and gravy

Desserts

Trifle

Peach and wine jelly

Apple crumble and custard



MEAL COSTS £15.00 PER PERSON

BOOKING IS ESSENTIAL SO TO AVOID DISSAPPOINTMENT CALL 22797 TO BOOK A TABLE

FOR LATE CANCELLATIONS THERE WILL BE A £5.00 PER PERSON CHARGE.



NOTICE BOARD

ST HELENA MAGISTRATES' COURT

21st September 2017

SHANE JULIAN GREEN (39) of Longwood Hangings pleaded guilty to driving whilst 60% over the prescribed alcohol limit, driving without a valid road licence and without insurance. The offence of driving without insurance was aggravated by Mr Green having a previous conviction for the same offence. Mr Green was fined a total of £295 and disqualified for the extended period of 15 months. Mr Green was also ordered to pay costs of £15.00

28th September 2017

MARK GEORGE BENJAMIN (39) of Mulberry Gut, Longwood pleaded guilty to driving whilst 140% over the prescribed alcohol limit. Mr Benjamin appeared before the Court as a first offender. However the offence was aggravated by the very high reading and the fact that an accident occurred whereby damage was caused to roadside property. Mr Benjamin was sentenced to perform 160 hours of community service as a direct alternative to imprisonment and disqualified from driving for the extended period of 2 years. Mr Benjamin was ordered to pay compensation for the damage caused together with costs of £15.00.



Bank of St. Helena Ltd.

www.sainthelenabank.com

AIRPORT BANKING CURRENCY EXCHANGE KIOSK

Bank of St Helena Ltd advises customers that with effect from Saturday, 14 October 2017, the Bank's Currency Exchange Kiosk at St Helena Airport will be available every Saturday from 10am to 2:30pm, providing the following banking services for flight arrival and departure:

- CASH WITHDRAWAL
- CREDIT/DEBIT CARD CASH ADVANCE
- FOREIGN CURRENCY EXCHANGE

To accommodate the Flight Stop Over, opening times for this weekend only, will be:

- Saturday 14 October 12 - 2.30 pm
- Sunday 15 October 10 - 2.30pm

Thereafter the regular opening times, advertised above, will apply.

The Bank's Airport Currency Exchange Kiosk Services will also be available on Sundays that flights arrive monthly from Ascension Island.

Head Office: Market Street - Jamestown - St. Helena - South Atlantic - STHL 1ZZ

Tel: +290 22390 - Fax: +290 22553 - e-mail: info@sainthelenabank.com - web www.sainthelenabank.com

Established and regulated in St. Helena under the Financial Services Ordinance, 2008, the Company Ordinance, 2004 and the Company Regulations, 2004



Take the opportunity to praise God and sing along to Gospel Music with the Seventh Day Adventist church members, Singspirationalists and Guest Singers.

Where: Guinea Grass Community Centre

When: Sunday 15th October 2017

Time: 4 pm

All are welcome

FOR SALE!



FREELANDER 2 (2.2) 2008

Silver in colour

Contact Colin on Mob: 63734





NOTICE BOARD

**ANNUAL GENERAL MEETING**

DATE: MONDAY 13 NOVEMBER 2017
TIME: 6.30 pm
PLACE: EDUCATION LEARNING CENTRE

Please join us for the Annual General Meeting of your St Helena National Trust. The general public are invited to hear a financial and general report of the Trust's activities for the financial year 2016 – 2017.

A short intermission will follow during which snacks and refreshments will be provided. Those in attendance are encouraged to ensure that their membership is up to date and membership forms will be available on the night. Following the intermission there will be a visual presentation by a special guest after which shall be the appointment/election of the National Trust Council.

The elected positions on the Trust Council have been unanimously endorsed by all 16 of the sitting Members of Trust Council and are presented here as the Trust Council Slate of Nominees:

President:	Mrs Ethel Yon
Vice- President:	Mr Michel Dancoisne-Martineau
Secretary:	Mrs Clare O'Dean
Treasurer:	Mrs Connie Johnson
At Large Member:	Mrs Serena Thorpe
At Large Member:	Mrs Sharon Henry

If uncontested, appointments shall be renewed without election. Members of the Trust may nominate an individual to contest any of the positions above provided nominations are signed by the individual nominating, the individual seconding, and the individual standing for election. Such nominations must be received by the Trust office at least two business days prior to the AGM. If a position is contested, a secret ballot will be conducted at the meeting to determine the successful candidate. Only Members of the Trust shall be eligible to vote.

PLEASE JOIN YOUR NATIONAL TRUST AND SUPPORT YOUR HERITAGE

Membership dues may be paid at the meeting at the following rates:

Local Residents:	Adults £3/year, Families £5/year	£100 for Life
Overseas Residents:	Adults £30/year, families £50/year	£500 for Life



SPORTS ARENA

Golf Report weekending 8 October 2017

Guess who turned up to play golf on Sunday? Yes, it was Vice Captain Larry Thomas. Guess who was sponsoring the tournament? Yes Larry Thomas! Guess who won the competition? Again Larry Thomas! And who won the two ball pool? Yes, you've guessed correctly, it was Larry Thomas! Well done Larry, a good return on your investment. The club wishes to thank the Rose and Crown for their kind sponsorship. Eighteen players took part in that monthly medal played in misty and sometimes foggy conditions which threatened to stop the game going ahead but eventually everyone completed their round even if a little wet! In second place following Larry's net 66 was Kevin Nott with net 68. Kevin was playing his last tournament as he is returning to Cape Town. Best of luck Kevin! Well done to the winners. Two other players came in under 70, Gavin Crowie and Jeffrey Stevens both returning a 69. Next Sunday there will be a Texas scramble, choose your own partner competition, starting at 12 o'clock. A sign-up sheet is on the Club Notice Board or members can leave their names on the Club telephone Message Service 24421.

Tony Green, Contributed



FOOTBALL RESULTS

Saturday 7 Oct

League Match

Saints 2

Dylan O'Keefe

Nick Stevens

Wirebirds 2

Alex Osborne, Weston Clingham

MOM: Mark Yon (Saints)

Sunday 8 Oct

Knockout

Crusaders 3

Dane Wade, Josh Benjamin, Julian Fuller

Fugees 1

Kyle Yon

MOM: Dane Wade (Crusaders), YPOM: Josh Benjamin (Crusaders)

Bellboys 3

AJ Bennett, Corey Scipio, Scott Henry

Axis 0

MOM Ryan Benjamin (Bellboys)

