

GEORGETOWN™

WOMEN'S LACROSSE



39 Jenny Schwalje

50 Maddy Fisher

20 Candace Pallitto

23 Kate Snouffer

20



17

GAMEDAY PROGRAM

#WorkingBetter

COMBINING PAPER AND PIXELS
TO CUT DOCUMENT COSTS UP TO
30%, SO OFFICES WORK BETTER.

Xerox Managed Print Services is using data and analytics to help companies all over the world reduce printing costs and increase productivity. And, at the same time, ensures secure printing for employees from any device, anywhere. **Work can work better.**



©2015 Xerox Corporation. All rights reserved. Xerox®, Xerox and Design® and Work Can Work Better are trademarks of Xerox Corporation in the U.S. and/or other countries.

2017 SCHEDULE

DATE	OPPONENT	TIME	DATE	OPPONENT	TIME
Feb. 11	at Delaware	1 p.m.	March 25	at Connecticut*	1 p.m.
Feb. 15	at George Washington	3 p.m.	April 1	Temple* (BEDN)	1 p.m.
Feb. 18	Maryland	1 p.m.	April 5	at Villanova*	7 p.m.
Feb. 22	Towson	4 p.m.	April 8	Vanderbilt*	1 p.m.
March 1	at Johns Hopkins (ESPNU)	5 p.m.	April 12	Cincinnati*	2 p.m.
March 4	George Mason	3 p.m.	April 15	at Marquette*	2 p.m.
March 11	at Pennsylvania	1 p.m.	April 22	Denver*	1 p.m.
March 18	at Butler*	1 p.m.	April 29	at Florida*	1 p.m.
March 22	at Loyola	7 p.m.			

bold indicates home game played at Cooper Field | * BIG EAST Conference Game | all times Eastern
BIG EAST Championship Semifinals / Finals: May 4 / May 6 held at Villanova Stadium; Villanova, Pa.

TABLE OF CONTENTS

2017 Schedule.....	1	Series vs. Opponents.....	53
Director of Intercollegiate Athletics Lee Reed.....	2	Where Are They Now?.....	54
Head Coach Ricky Fried.....	4	BIG EAST Conference.....	56
Assistant Coach Danielle Etrasco.....	6	Thompson Center.....	58
Assistant Coach Nick Williams.....	7	Cooper Field.....	60
Support Staff.....	8		
2017 Roster.....	10		
2017 Team.....	12		
This is Georgetown Lacrosse.....	28		
Georgetown by the Numbers.....	30		
All-Americans.....	32		
2016 Statistics.....	34		
Awards & Honors.....	36		
Team & University Awards.....	38		
BIG EAST Awards.....	39		
Career Records.....	40		
Single-Season Records.....	42		
All-Time Roster.....	44		
Year-by-Year Results.....	46		
All-Time Results by Opponent.....	50		



CREDITS

The 2017 Georgetown University women's lacrosse gameday program is published by the sports information office.

All content was written and compiled by Sports Information Director Barbara Barnes. Editing, coordination assistance and interior layout and design on the program provided by Brand Manager Diana T. Pulupa.

Thanks to Mike "Mex" Carey, Jeffrey Messman, Audrey Westcott, Wyndham Williamson and Christopher Wallace as well as the Georgetown women's lacrosse staff.

Photography by Rafael Suanes, Georgetown Univ. Photographer Phil Humnicky, Ned Dishman (NBAE), Mitchell Layton, US Lacrosse, Todd Olszewski, Jeffrey Allan Camarati and the university archives.



Cover design and interior template by Old Hat Creative; Norman, Okla.



Printing by IRONMARK; Annapolis Junction, Md.

Special thanks to Robert Smith and the Old Hat Creative staff as well as Matt Marzullo and the IRONMARK Staff.



LEE REED

**DIRECTOR OF INTERCOLLEGIATE ATHLETICS
FRANCIS X. RIENZO CHAIR**

Lee Reed came to Georgetown University in April of 2010 as the 17th director of intercollegiate athletics (Francis X. Rienzo chair), bringing with him an outstanding record of service in higher education. His commitment to people is an integral part of his core philosophy and is reflected in his oft-mentioned adage, "Georgetown athletics is STUDENT-ATHLETE centered, COACH driven, and ADMINISTRATOR assisted." This principle guides all strategic decision-making within the department of athletics.

While overseeing one of the most broad-based intercollegiate athletics programs in the nation with 29 varsity programs and more than 700 student-athletes, Reed continues to earn respect within his profession and among his peers. He is in line to serve as president of the National Association of Collegiate Directors of Athletics (NACDA) during the 2018-19 academic year and is currently the 2nd vice president of the Association. Reed also serves as chair of the John McLendon Foundation Board and is chair of the BIG EAST Men's Basketball Issues Working Group. He also serves as a mentor in the NCAA Pathways program, is on the advisory board for the LGBTQ Center at Georgetown, and is a frequent guest speaker at the NCAA, NACDA and other national programs.

Under his leadership, the Hoyas have remained prominent on the national landscape while maintaining their commitment to the values that define the oldest Catholic and Jesuit university in the country. In the classroom, Hoya student-athletes continue to excel, posting cumulative GPAs consistently over 3.2, the highest mark since that figure has been tracked. In addition, 13 teams were recognized by the NCAA for high Academic Progress Rate scores, 94 percent of student-athletes graduated and nearly 300 student-athletes were selected to the BIG EAST Academic Honor Roll, the most in the BIG EAST Conference.

Reed was instrumental in the smooth transition to the new BIG EAST conference in 2013, which welcomed three new institutions. In 2015, he negotiated a lucrative 10-year multi-media rights deal with FOX Sports on behalf of Georgetown Athletics, joining an exclusive list of institutions to partner with FOX Sports in this national trend. Additionally, this fall, the Thompson Intercollegiate Athletic Center will be open, the first varsity athletics facility on the Hilltop since 1951. The Thompson Center is a 144,000-square-foot state-of-the-art training facility that will immeasurably elevate the infrastructure available to Georgetown's student-athletes.

Reed led the Department of Athletics' ambitious \$125 million fundraising campaign as a part of the university-wide *For Generations to Come* campaign, completed in 2016, as well as unprecedented growth of the athletics endowment. Under his leadership, Georgetown University received the two largest gifts in athletics history, including a historic \$50M commitment to underwrite the Cooper Athletics Leadership Program and to complete Cooper Field. Additionally, through philanthropic gifts, Reed has upgraded numerous facilities benefiting soccer (Shaw Field), baseball, rowing and strength & conditioning.

Throughout Reed's tenure, Georgetown athletics has continued to be a national and conference powerhouse, claiming individual and team titles in men's and women's cross country and track & field, sailing, men's and women's soccer, men's and women's golf, women's lacrosse, men's and women's swimming & diving, men's rowing, and men's basketball. In all, Georgetown's student-athletes have captured 18 conference tournament and regular season championships.

Three head coaches have received national coaches of the year honors under Reed (sailing, women's cross country, men's soccer) and six team national championships have been earned, including a NCAA women's cross country title in 2011, a men's lightweight rowing championship in 2016, and four IGSA national sailing titles (2010, 2012, 2014, 2016). In addition, numerous conference and national rookie and player of the year honors and coach and coaching staff of the year accolades have been awarded.

The following athletic department "firsts" have occurred under Reed's watch:

- Field hockey student-athlete named First Team All-BIG EAST
- Baseball student-athlete named BIG EAST Player of the Year
- Swimming student-athlete qualified for the US Team Olympic Trials
- Sailing student-athlete captured the Singlehanded National Championship
- Men's soccer team advanced to the College Cup and National Championship game
- Softball team advanced to the BIG EAST tournament

Prior to coming to the Hilltop, Reed served as the director of athletics at Cleveland State University for eight years. A former basketball standout at Cleveland State, he joined the Vikings Athletics Department in the summer of 2002. During his time at CSU, the Viking athletics program moved into the upper ranks of the Horizon League and was recognized as one of

the top programs in the state of Ohio. While there, he served as president of the NCAA I-AAA Athletic Director's Association, served on the NCAA Management Council and the NCAA Men's Basketball Academic Enhancement Group, a working group composed of presidents, chancellors, head coaches, commissioners, athletic directors and faculty athletic representatives, which was established to develop strategies to enhance the academic performance and graduation rates of NCAA Division I men's basketball. In addition, each summer Reed returns to the classroom to co-teach a graduate level leadership class in the sports industry management program in Georgetown's School of Continuing Studies.

Reed was recognized as one of the 50 Most Powerful African-Americans in Sports by Black Enterprise magazine.

Reed spent seven years at Eastern Michigan University prior to returning to Cleveland State. He received his master in sports administration from the University of New Mexico, where he also served as an assistant men's basketball coach.

Reed and his wife, Katafa, and their children reside in Great Falls, Virginia.

SENIOR ADMINISTRATIVE STAFF



SHARON BRUMMELL
Senior Associate AD
for Business & Finance /
Senior Woman Administrator



DAN O'NEIL
Senior Associate AD
for External Affairs



DAN TRUMP
Senior Associate AD
for Internal Operations



BRIAN MCGUIRE
Associate AD
for Facilities & Operations



DR. MIKE LORENZEN
Assistant AD
for Student-Athlete
Leadership & Development



PATRICK MCGARLE
Executive Director
for Athletic Relations



BRENDA SMITH
Senior Director
of Development for
Intercollegiate Athletics



RICKY FRIED

HEAD COACH / 13TH SEASON / UMBC '88

**GEORGETOWN RECORD: 130-88 OVERALL, 64-15 BIG EAST
CAREER RECORD: SAME**

Ricky Fried is now in his 13th season at the helm of the Hoya program after serving as a Georgetown assistant coach in 2003 and 2004.

In his first 12 seasons, Fried has led the Hoyas to a 130-88 overall record and a 64-15 record in BIG EAST regular season games. During the 2014 season, he became the winningest coach in program history following a 13-6 win over Temple on April 19.

Under Fried, Georgetown has earned seven BIG EAST regular season titles, made six trips to the BIG EAST Tournament Championship Game, winning in 2010, and has advanced to the NCAA Tournament seven times, reaching the quarterfinals twice.

Fried has coached 22 All-Americans as well as the National Goalie of the Year, two BIG EAST Attackers of the Year, two Midfielders of the Year and five Defensive Players of the Year to go along with 67 All-BIG EAST first and second team selections. Additionally, he and his staff have won BIG EAST Staff of the Year on two occasions.

In 2016, Georgetown went 6-11 with a mark of 4-3 in BIG EAST Conference play. The squad earned a BIG EAST Championship berth marking GU's 10th-consecutive trip to the conference postseason. The Blue & Gray had one player named all-region and four All-BIG EAST honorees.

Fried was named associate head coach for the Hoyas in November 2003 and was involved in all aspects of the Hoya program but focused on an offensive unit that became one of the most potent in the nation. On the other side of the field in 2003, Georgetown led the nation in caused turnovers.

Prior to Georgetown, Fried was an assistant coach at Johns Hopkins University for nine seasons. While at the school, Fried served as the recruiting coordinator and helped build Hopkins in to a Division I Top 20 program after aiding in the transition from a strong D-III program.



FRIED YEAR-BY-YEAR

YEAR	OVERALL	BIG EAST	YEAR	OVERALL	BIG EAST	YEAR	OVERALL	BIG EAST
2005	13-5	5-0	2010	13-6	8-0	2015	7-10	6-1
2006	14-4	5-0	2011	9-8	7-1	2016	6-11	4-3
2007	10-8	4-1	2012	9-8	5-3	TOTAL	130-88	65-15
2008	12-7	3-2	2013	13-6	6-2			
2009	13-6	6-1	2014	11-9	6-1			

A 1988 graduate of the University of Maryland, Baltimore County (UMBC), Fried was an All-America midfielder for the Retrievers lacrosse team. As a senior, he served as team captain, was named the team's Most Valuable Player and earned the team's Leadership Award. He was named to UMBC's All-Time Team in 1990.

Fried arrived at Hopkins following a two-year stint as an assistant coach at the Gilman School and serving a season as an assistant at his alma mater. He also played professionally with the Philadelphia Wings from 1989-92 and 1997 and the Baltimore Thunder from 1993-94.

Fried is also active in the Intercollegiate Women's Lacrosse Coaches Association (IWLCA) and has served as the organization's vice president, on the board of directors, on its ethics and recruiting tournaments committees. Currently, he is the Chair of the Regional All-American Committee and is a member of the Tewaaron Trophy Committee.

After serving as an assistant coach for the U.S. Women's Lacrosse Elite Team for three years, Fried was named the head coach of the national team in August of 2009.

After leading Team USA to an undefeated gold medal in 2013 at the Federation of International Lacrosse World Cup in Oshawa, Canada, his position was renewed through 2017. It marked his second World Cup gold after winning in the summer of 2009 as an assistant in Prague, Czech Republic.

As the head coach of the national team, Fried appoints assistant coaches, identifies talented players for the squad and advises on the direction women's lacrosse takes in the United States.

He, his wife Halyna, and their children, Jack (13) and Paige (11), reside in Columbia, Md.

PAST GEORGETOWN COACHES

- RICKY FRIED (2005-pres.)** | 130-88 | .596
- KIM SIMONS (1996-2004)** | 113-43 | .724
- ALISON WILLIAMS (1993-95)** | 21-17 | .614
- YVONNE LANDIS (1989-92)** | 17-39 | .304
- SANDIE INGLIS (1984-88)** | 29-20-1 | .590
- MEG GALLIGAN (1982-83)** | 4-12 | .250
- CINDY WILHELMY (1980-81)** | 4-9-2 | .333
- JILL ROODY (1979)** | 1-7 | .125
- PAT BECKER (1977-78)** | 4-11 | .267





DANIELLE ETRASCO

ASSISTANT COACH / FIRST SEASON / BOSTON UNIVERSITY '13

Danielle Etrasco came to the Hilltop during the summer of 2016. She came to Georgetown from Army West Point where she was an assistant coach for two seasons. Army West Point became the Academy's 28th varsity sport and competed at the NCAA Division I level as a member of the Patriot League for the 2016 season. The Black Knights went 5-12 overall including a three-game win streak early in the season.

Etrasco helped oversee Army West Point's final year at the club level, as the Black Knights played to an 8-3 overall record and appeared in the championship game of the New England Women's Lacrosse League Tournament. During the season, she worked primarily with the offense.

Etrasco spent the 2013-14 academic year at Virginia Tech, where she served as an assistant under Head Coach Megan Burkner. While in Blacksburg, Va., Etrasco worked primarily with the Hokies' attack, helping produce an All-ACC first team player and working to improve the team's scoring output from 177 goals in 2013 to 192 goals in 2014.

In her role at Virginia Tech, Etrasco also served as the team's student-athlete academic liaison and was responsible for developing practice plans, breaking down video and coordinating travel.

Prior to her time at Virginia Tech, Etrasco enjoyed a standout playing career as an attacker at Boston University. Along with serving as team captain as a junior and senior, Etrasco led the Terriers in scoring during her sophomore, junior and senior campaigns, including team bests of 79 points, 59 goals and 20 assists as a senior.

Additionally, she was named to the Tewaaron Award Watch List in 2013, as one of the top college players in the nation.

A two-time Intercollegiate Women's Lacrosse Coaches Association (IWLCA) All-American, Etrasco earned IWLCA All-Northeast Region first team and All-America East Conference first team honors in each of her final three seasons at Boston University.

In the summer of 2011, Etrasco was invited to join the United States National Team, eventually earning a spot on the 2013 World Cup squad. Etrasco won a gold medal with Team USA at the 2013 Federation of International Lacrosse (FIL) World Cup in Oshawa, Ontario, totaling 17 goals and three assists in seven games during the tournament.

In 2016, she was selected as the 28th overall pick in the first-ever United Women's Lacrosse League draft going to the Boston Storm.

A native of Massapequa, N.Y., Etrasco also served in a coaching capacity with the Long Island Liberty Lacrosse program in Manhasset, N.Y., and at the Around the Crease lacrosse camp in Boston, Mass.

Etrasco earned a Bachelor's of Science degree in hospitality administration from Boston University in 2013.

She resides in Washington, D.C.



NICK WILLIAMS

ASSISTANT COACH / THIRD SEASON / TOWSON '08

Nick Williams was elevated to assistant coach in 2014 after a one-year stint as a volunteer assistant. Williams came to the Hilltop after serving as an assistant coach at the University of Florida.

In 2016, Georgetown went 6-11 with a mark of 4-3 in BIG EAST Conference play. The squad earned its 10th-consecutive BIG EAST Championship berth, and the Blue & Gray had one player named all-region as well as four All-BIG EAST honorees.

In his first season, Georgetown went 11-9 with a mark of 6-1 in BIG EAST Conference play. The squad advanced to the BIG EAST Championship game and earned an NCAA Tournament berth defeating Johns Hopkins, 9-8, in overtime in the first round. GU fell to the University of North Carolina, 10-8. The Blue & Gray had three players named all-region and six All-BIG EAST honorees.

The following year, GU was the BIG EAST Regular Season Co-Champion.

At Florida, Williams was the defensive coordinator for one season. Williams was involved in all day-to-day activities of the team including scouting, practice planning, film and working with the Florida Lacrosse Summer Camp. He was also instrumental in recruiting.

With Williams, the Gators went 18-3 and appeared in the NCAA Tournament. In 2013, he coached the top four award winners in the conference as well as five All-America honorees.

Williams served two seasons (2010-12) as an assistant coach for the Notre Dame women's lacrosse team and was instrumental with overseeing team defense and team goalkeepers, while also assisting with recruiting, scouting opponents and camps and clinics.

In two seasons with UND, Williams helped compile a 23-15 record as he worked directly with many goalies and defenders who brought in national awards. The Irish were eighth in the country in caused turnovers and 34th in scoring defense in 2012. They finished with a 13-4 record and were eliminated by national champion Northwestern in the first round of the NCAA tournament.

Prior to Notre Dame, he spent a season working with women's lacrosse at his alma mater, Towson, where he was a two-sport athlete in men's lacrosse and football. During his lone season at Towson, Williams helped the women's team to a 13-3 overall record, a first-ever at-large selection to the NCAA Tournament and a final ranking of seventh in the nation, the highest ranking in school history.

Assisting with both the offense and defense, he helped coach the 2010 Colonial Athletic Association (CAA) Player of the Year, three First Team All-CAA picks, two second team choices and two all-rookie selections.

As a four-year member of the Tigers men's lacrosse team, Williams played 61 career games and helped Towson to a pair of CAA championships. He scored 29 goals with 22 assists in his career, including a career-best, four-goal game against Cornell in the 2005 NCAA Tournament. Williams graduated in 2008 with a bachelor's degree in sports management.

The Baltimore, Md, native also was a football standout at Towson and is the fifth-leading rusher in school history with 1,985 yards during his career. As a sophomore, Williams rushed for 911 yards in 11 games, including a career-high 169 yards in a win over Delaware. He was a Third Team All-Atlantic 10 selection at running back following his sophomore year.

Additionally, Williams spent time as the assistant coach of women's lacrosse at Pomona College in Claremont, Calif, during the spring of 2009. That previous fall he was the running backs coach at his high school alma mater - Calvert Hall College High School in Baltimore.

He resides in Washington, D.C.



SUPPORT STAFF



BARBARA BARNES
Director of
Sports Information



SHARON BRUMMELL
Associate AD - Business &
Finance / SWA



COLLIN BRUNING
Ticket Manager



THOMAS DIGIOVANNA
Equipment Manager



DAVID DRISCOLL
Assistant Director of
Facilities & Operations



KATE GOLDSTEIN
Volunteer Assistant
Coach



CHRIS GROSSE
Assistant AD
for Marketing



DR. SHELLY HABEL
Assistant Dir. of the Academic Resource
Ctr. for Student-Athlete Services



MIKE HILL
Head of Sports
Performance



JOSHUA LAROSA
Director of Equipment
& Transportation



LUIS MENDEZ
Field Manager



ERIN MULLIGAN
Assistant Athletic
Trainer



LYNN NEWTON
Assistant AD
for Business Operations /
Women's Lacrosse Administrator



JASON POPPE
Director of Events &
Operations



DIANA PULUPA
Brand Manager /
Associate SID



PNC BANK

**Official Bank of the
Georgetown Hoyas**

[pnc.com](https://www.pnc.com)

2017 NUMERICAL ROSTER

NO.	NAME	HT.	POS.	CL.	HOMETOWN/HIGH SCHOOL (PREVIOUS SCHOOL)
1	Michaela Bruno	5-5	A	Fr.	Garden City, N.Y. / Garden City
4	Emily Ehle	5-10	A	Fr.	Baldwinsville, N.Y. / Christian Brothers Academy
5	Haelle Chomo	5-5	G	So.	Naples, Fla. / Barron Collier
6	Liza Liotta	5-4	M	Fr.	Baltimore, Md. / St. Paul's School for Girls
7	Sarah Cheney	5-6	A	Jr.	Loudonville, N.Y. / Shaker
8	Caroline Drusano	5-5	A	Jr.	Towson, Md. / Notre Dame Prep
9	Mariah Matheis	5-2	A	So.	Darien, Conn. / Darien
10	Taylor Gebhardt	5-7	A	So.	Baldwinsville, N.Y. / CW Baker
11	Libby McGraw	5-8	D	Jr.	Summit, N.J. / Kent Place School
12	Liliana Brown	5-8	A	So.	Darien, Conn. / Deerfield Academy (Bates College)
13	Megan Massimino	5-4	D	So.	Villanova, Pa. / Radnor
14	Morgan Ryan	5-2	A	So.	Maplewood, N.J. / Oak Knoll School
15	Kathryn Dunn	5-7	D	Jr.	Cohasset, Mass. / Cohasset
16	Natalia Lynch	5-4	M	Fr.	Smithtown, N.Y. / Smithtown West
17	Josephine Zinn	5-4	D	So.	Franklin Lakes, N.J. / Immaculate Heart Academy
19	Coulby Riehl	5-2	D	Fr.	Cockeysville, Md. / Notre Dame Prep
20	Candace Pallitto	5-4	D	Sr.	Chatham, N.J. / Villa Walsh Academy
21	Rachel Rausa	5-2	M	Jr.	Ambler, Pa. / Hatboro-Horsham
22	Hannah Seibel	5-9	M	Jr.	Hanover, N.H. / Hanover
23	Kate Snouffer	5-7	A	Sr.	Baltimore, Md. / Bryn Mawr School
24	Georgia Tunney	5-7	M	Jr.	Towson, Md. / Notre Dame Prep
25	Noelle Peragine	5-7	D	Fr.	Northport, N.Y. / Northport
26	Francesca Whitehurst	5-5	M	So.	Baltimore, Md. / Roland Park Country School
27	Katie Hudson	5-3	D	Fr.	Cold Spring Harbor, N.Y. / Cold Spring Harbor
39	Jenny Schwalje	5-2	D	Sr.	Setauket, N.Y. / St. Anthony's
40	Micheline DiNardo	5-9	G	Fr.	Rye, N.Y. / Rye
50	Maddy Fisher	5-4	G	Sr.	Ellicott City, Md. / Mount Hebron

COACHING STAFF

HEAD COACH:

Ricky Fried (UMBC '88), 13th season

ASSISTANT COACHES:

Danielle Etrasco (Boston University '13), first season

Nick Williams (Towson '08), third season

VOLUNTEER ASSISTANT:

Kate Goldstein (McDaniel College '14), third season

HOYAS BY STATE

Connecticut (2): Bruno, Matheis

Florida (1): Chomo

Maryland (7): Drusano, Fisher, Liotta, Riehl, Snouffer, Tunney, Whitehurst

Massachusetts (1): Dunn

New Hampshire (1): Seibel

New Jersey (4): McGraw, Pallitto, Ryan, Zinn

HOYAS BY STATE

New York (9): Bruno, Cheney, DiNardo, Ehle, Gebhardt, Hudson, Lynch, Peragine, Schwalje

Pennsylvania (2): Massimino, Rausa

HOYAS BY CLASS

Seniors (4): Fisher, Pallitto, Schwalje, Snouffer

Juniors (7): Cheney, Drusano, Dunn, McGraw, Rausa, Seibel, Tunney

Sophomores (8): Brown, Chomo, Gebhardt, Massimino, Matheis, Ryan, Whitehurst, Zinn

Freshmen (8): Bruno, DiNardo, Ehle, Hudson, Liotta, Lynch, Peragine, Riehl

HOYAS BY POSITION

Attackers (9): Brown, Bruno, Cheney, Drusano, Ehle, Gebhardt, Matheis, Ryan, Snouffer

Midfielders (6): Liotta, Lynch, Rausa, Seibel, Tunney, Whitehurst

Defenders (9): Dunn, Hudson, Massimino, McGraw, Pallitto, Peragine, Riehl, Schwalje, Zinn

Goalkeepers (3): Chomo, DiNardo, Fisher



georgetown catering



Premier Catering

From drop-off catering to complete event management, our talented and enthusiastic team offers impeccable service along with customized and innovative menus.

Campus Favorites

Designed to fit any budget, we offer convenient catering solutions from your favorite campus locations.



Student Catering

Need to fuel your next committee meeting or study session? Custom student catering options are perfect for any occasion.

Contact Us Today

202.687.3395

georgetowncatering.com



MADDY FISHER
 CAPTAIN / SENIOR / GOALIE / 5-4
 ELLICOTT CITY, MD. / MOUNT HEBRON

YEAR	GP-GS	MINUTES	GA	GAAVG	SAVES	SAVE %	W	L	T	SHD
2014	20-13	903:50	138	9.16	84	0.378	6	6	0	0
2015	17-17	790:48	142	10.77	94	0.398	6	10	0	0
2016	17-16	533:36	102	11.47	57	0.358	4	9	0	0
TOTAL	54-46	2228:14	382	10.29	235	0.381	16	25	0	0

50

2016 (Junior): Started all 17 games for the Hoyas with 533 minutes in the cage ... Tallied 57 saves for a record of 4-9 and an 11.47 GAA ... Tallied seven saves in a BIG EAST Championship loss to Florida, and posted six stops in a win over Villanova ... BIG EAST All-Academic.

2015 (Sophomore): Named Second Team All-BIG EAST ... Started all 17 games for the Hoyas ... Played 790 minutes in the cage tallying 94 saves ... Went 6-10 on the season ... Picked up 19 ground balls and managed three caused turnovers ... Selected as the BIG EAST Defensive Player of the Week on 4/14 ... Managed 11 saves in the Vanderbilt victory ... Had nine saves against both Duke and Maryland ... Picked up three ground balls on four different occasions ... BIG EAST All-Academic.

2014 (Freshman): Winner of the Sheehan Stanwick Rookie of the Year Award at the annual banquet ... Appeared in 20 games for the Hoyas with 13 starts ... Managed 84 saves and a GAA of 9.16 with a record of 6-6 ... Picked up 15 ground balls and had three caused turnovers ... Managed eight saves in a win over Connecticut ... Had seven saves in the cage on three different occasions ... Picked up three ground balls against Marquette and Cincinnati ... A member of the BIG EAST All-Academic squad.

Prior to Georgetown: A four-year letterwinner and three-year starter at Mount Hebron High School ... A two-time Washington Post All-Met honoree and earned All-Met Baltimore Sun honors in 2013 ... Earned three All-Washington County awards and named team MVP in 2011 as well as team Unsung Hero in 2012 and 2013 ... An Academic All-American as a senior and on the 2013 ESPN Rise Watch List ... Also earned a varsity letter in field hockey ... Played club with Hero's Lacrosse ... Member of the honor roll.





JENNY SCHWALJE

CAPTAIN / SENIOR / DEFENDER / 5-2
SETAUKET, N.Y./ST. ANTHONY'S

39

YEAR	GP-GS	G	A	P	S	SHOT %	SOB	SOB%	GWG	GB	DC	TO	CT
2014	6-0	0	0	0	0	.000	0	.000	0	3	1	1	0
2015	14-8	0	0	0	0	.000	0	.000	0	8	1	3	3
2016	17-17	0	0	0	1	.000	0	.000	0	22	7	8	8
TOTAL	37-25	0	0	0	1	.000	0	.000	0	33	9	12	11

2016 (Junior): Started all 17 games for the Blue & Gray ... Ranked second on the squad in ground balls with 22 ... Posted seven draw controls and eight caused turnovers ... Managed three draw controls and two ground balls in George Mason win ... Had two caused turnovers, two ground balls and one draw control in Loyola loss ... BIG EAST All-Academic.

2015 (Sophomore): Played in 14 games with eight starts ... Managed eight ground balls, three caused turnovers and one draw control ... Had two ground balls, one draw control and one caused turnover in the win over Cincinnati ... Picked up a ground ball and had a caused turnover in the George Mason victory ... BIG EAST All-Academic.

2014 (Freshman): Appeared in six games for the Hoyas ... Picked up three ground balls with one draw control ... Two ground balls and one draw control came in a win over Villanova.

Prior to Georgetown: A four-year letterwinner at St. Anthony's High School ... Named NSCHGAA All-League, Second Team Newsday All-Long Island and served as team captain as a senior ... Won St. Anthony's 2013 Distinguished Student-Athlete Award ... Led St. Anthony's in ground balls and caused turnovers as a senior ... Won the Unsung Hero and Iron Workhorse Award in 2013 ... Helped team to four-consecutive NSCHGAA Catholic High School League Lacrosse Championships ... Played club with Long Island Express Lacrosse ... Member of the National Honor Society, received Duns Scotus Academic Award all four years and on the honor roll ... Sister Lauren is a member of the Georgetown women's lacrosse squad and brother Tim played lacrosse at Penn.





KATE SNOUFFER

CAPTAIN / SENIOR / ATTACK / 5-7
BALTIMORE, MD. / BRYN MAWR SCHOOL

YEAR	GP-GS	G	A	P	S	SHOT %	SOG	SO6%	GWG	GB	DC	TO	CT
2014	4-0	1	0	1	1	1.000	1	1.000	0	0	0	1	1
2016	11-0	3	4	7	7	.429	6	.857	0	3	0	5	0
TOTAL	15-0	4	4	8	8	.500	7	.875	0	3	0	6	1

23

2016 (Junior): Appeared in 11 games for Georgetown ... Tallied three goals and four assists for seven points on the season ... Picked up three ground balls ... Had three assists in the Vanderbilt victory ... BIG EAST All-Academic.

2015 (Sophomore): Did not see game action due to injury.

2014 (Freshman): Appeared in four games for the Hoyas ... Scored a goal in the win over Cincinnati on a free position shot ... Had one caused turnover against Villanova.

Prior to Georgetown: Four-year letterwinner and team captain in lacrosse, soccer and basketball at Bryn Mawr School for Girls ... A 2013 US Lacrosse First Team All-American ... Baltimore Messenger Female Athlete of the Year and IAAM A Conference All-Star as a senior ... Member of the Under Armour Underclassmen Baltimore Team in 2011 and 2012 ... On the Baltimore Metro Team 1 in 2011 ... Four-time winner of the Bryn Mawr School Varsity Cup ... Scored 87 goals with 71 assists in high school ... Played club with TLC Lacrosse ... Member of the Honor Roll.





SARAH CHENEY

CAPTAIN / JUNIOR / ATTACK / 5-6
LOUDDONVILLE, N.Y. / SHAKER

YEAR	GP-GS	G	A	P	S	SHOT %	SOG	SOG%	GWG	GB	DC	TO	CT
2015	4-0	0	0	0	0	.000	0	.000	0	0	1	1	0
2016	15-0	0	1	1	1	.000	1	1.000	0	2	1	4	3
TOTAL	19-0	0	1	1	1	.000	1	1.000	0	2	2	5	3

7

2016 (Sophomore): Appeared in 15 games for the Hoyas with an assist against Cincinnati to her credit ... Managed three caused turnovers, two ground balls and one draw control on the season ... BIG EAST All-Academic.

2015 (Freshman): Played in four games for the Blue & Gray ... Pulled in a draw control in the Connecticut win ... BIG EAST All-Academic.

Prior to Georgetown: A four-year letterwinner in lacrosse at Shaker High School and played club for Metro Lacrosse ... Named a 2014 US Lacrosse Jackie Pitts Award Winner ... A member of the 2013 First Team Suburban Council All-Star Team ... Won the 2013 Metro Foundation Scholarship Award and the Sportsmanship Award in two sports ... A two-time US Lacrosse Academic All-American and a Shaker Scholar-Athlete ... Team won its league twice and won Section II Class A as well as going to the state semifinals in 2012 ... A 2013 sectional finalist ... Won two varsity letters in soccer ... Won the 2013 New York State Society of Women Engineers Award and the 2013 Shaker Leadership Award ... Graduated in the top five percent of her class ... Served as the president of Students Organized for Service and played the saxophone in the band.





CANDACE PALLITTO

SENIOR / DEFENDER / 5-4
CHATHAM, N.J. / VILLA WALSH ACADEMY

20

YEAR	GP-GS	G	A	P	S	SHOT %	SOB	SOB%	GWG	GB	DC	TO	CT
2014	6-0	0	0	0	1	.000	1	1.000	0	2	0	2	1
2015	9-0	0	0	0	0	.000	0	.000	0	1	0	1	0
2016	4-0	0	0	0	0	.000	0	.000	0	0	1	0	0
TOTAL	19-0	0	0	0	1	.000	1	1.000	0	3	1	3	1

2016 (Junior): Played in four games for the Blue & Gray ... Pulled in a draw control in the win over Cincinnati ... BIG EAST All-Academic.

2015 (Sophomore): Played in nine games for the Hoyas ... Picked up a ground ball in the win over Vanderbilt ... BIG EAST All-Academic.

2014 (Freshman): Appeared in six games for the Hoyas ... Had two ground balls and one turnover ... A member of the BIG EAST All-Academic squad.

Prior to Georgetown: A four-year letterwinner at Villa Walsh Academy ... Was Second Team All-State, First Team All-Morris County, First Team MCCA All-County and First Team All-Daily Record as a senior ... Earned accolades in 2012 being named First Team All-Daily Record and First Team MCCA All-County ... Was First Team All-Daily Record as a sophomore ... Set a school record with 244 career goals ... Also lettered in volleyball and basketball in high school ... Served as the team captain in both lacrosse and volleyball ... Played club with T3 Elite North ... Member of the National Honor Society and National Spanish Honor Society ... President of the student council.





CAROLINE DRUSANO

JUNIOR / ATTACK / 5-5
TOWSON, MD. / NOTRE DAME PREP

YEAR	GP-GS	G	A	P	S	SHOT %	SOG	SOG%	GWG	GB	DC	TO	CT
2015	1-0	0	0	0	0	.000	0	.000	0	0	0	1	0
2016	5-0	0	1	1	0	.000	0	.000	0	0	0	0	1
TOTAL	6-0	0	1	1	0	.000	0	.000	0	0	0	1	1

8

2016 (Sophomore): Appeared in five games for the Hoyas ... Had an assist against Villanova for one point on the year ... Talled a caused turnover against Penn.

2015 (Freshman): Appeared in one game for the Hoyas, a loss to Duke ... Missed the remainder of the season due to injury.

Prior to Georgetown: A four-year letterwinner at Notre Dame Prep ... Named 2014 Towson Times First Team All-Star ... Led her team in scoring with 61 points on 26 goals and 35 assists and to a No. 9 national ranking as well as the IAAM Semifinals as a senior ... Played club with TLC Lacrosse ... Named to the Inside Lacrosse Rising Juniors Watch List ... Attended the Elite 120 Camp ... Also lettered in cross country ... A member of the Honor Roll and graduated with First Honors ... Volunteered at the Notre Dame Prep Gym Meet ... A high school and club teammate of fellow Hoya Georgia Tunney.



KATHRYN DUNN

JUNIOR / DEFENDER / 5-7
COHASSET, MASS. / COHASSET

YEAR	GP-GS	G	A	P	S	SHOT %	SOG	SOG%	GWG	GB	DC	TO	CT
2016	1-0	0	0	0	0	.000	0	.000	0	0	0	0	0
TOTAL	1-0	0	0	0	0	.000	0	.000	0	0	0	0	0

15

2016 (Sophomore): Saw action in one game, a win over Villanova ... BIG EAST All-Academic.

2015 (Freshman): Did not see game action due to injury ... BIG EAST All-Academic.

Prior to Georgetown: A four-year letterwinner and captain at Cohasset High School ... Played club with Revolution Lacrosse ... A three-time South Shore League All-Star ... Played for New England at the 2013 Under Armour Games ... An Academic All-American ... Selected for the Gate House Media Super Team for lacrosse and field hockey in 2013 ... Earned three letters in field hockey where her team won the league twice and were sectional finalists in 2010 and 2013 ... An AP Scholar and member of the Honor Roll ... On the debate team as well as the Yearbook Committee and served as the sports editor for the school newspaper.



LIBBY MCGRAW

JUNIOR / DEFENDER / 5-8
SUMMIT, N.J. / KENT PLACE SCHOOL

YEAR	GP-GS	G	A	P	S	SHOT %	SOG	SOG%	GWG	GB	DC	TO	CT
2015	2-0	0	0	0	0	.000	0	.000	0	0	0	0	0
2016	11-0	0	0	0	0	.000	0	.000	0	0	4	0	0
TOTAL	13-0	0	0	0	0	.000	0	.000	0	0	4	0	0

11

2016 (Sophomore): Played in 11 games for the Blue & Gray ... Tallied four draw controls on the season ... Pulled in two draw controls in the win over George Mason.

2015 (Freshman): Appeared in two games for the Hoyas, at Florida and a win over Cincinnati.

Prior to Georgetown: A four-year starter and senior captain at Kent Place School ... Member of the Under Armour All-American Lacrosse Team ... Played club with Metro Magic ... Earned Second Team All-League as a senior and won the Kent Place Coaches' Award ... Named Third Team All-League and All-Conference in 2013 as well as earning Academic All-America honors and the school's Unsung Hero Award ... Member of the Top of the Class Rising Junior All-Star Team and Maximum Exposure Rising Sophomore All-Star Team ... Part of the 2013 New Jersey Under Armour Team ... Won her school's Pat Conley Award for most outstanding senior student-athlete ... Also a four-year letterwinner and senior captain in soccer.



RACHEL RAUSA

JUNIOR / MIDFIELDER / 5-2
AMBLER, PA. / HATBORO-HORSHAM

YEAR	GP-GS	G	A	P	S	SHOT %	SOG	SOG%	GWG	GB	DC	TO	CT
2016	4-0	0	0	0	2	.000	2	1.000	0	0	0	0	0
TOTAL	4-0	0	0	0	2	.000	2	1.000	0	0	0	0	0

21

2016 (Sophomore): Appeared in four games for the Hoyas.

2015 (Freshman): Did not see game action due to injury ... BIG EAST All-Academic.

Prior to Georgetown: A four-year letterwinner and starter at Hatboro-Horsham High School ... Played club with Ultimate Goal Lacrosse ... Earned First Team US Lacrosse All-American as a senior ... A four-time All-Suburban One League honoree ... Named All-PhillyLacrosse.com, All-Intelligencer and All-American in both 2013 and 2014 ... A member of the Maximum Exposure All-Star Team in both 2011 and 2012 ... Played for the Philly team in the School Girls Tournament 2011, 2012 and 2013 ... Team won the Suburban One League in 2012, 2013 and 2014 ... A US Lacrosse Academic All-American as a senior ... A member of the National Honor Society ... On the Student Council and part of the Future Business Leaders of America ... Graduated in the top 10 percent of her class ... Won the Edward Taylor Coombs Foundation Scholarship.



HANNAH SEIBEL

JUNIOR / MIDFIELDER / 5-9
HANOVER, N.H. / HANOVER

YEAR	GP-GS	G	A	P	S	SHOT %	SOG	SOG%	GWG	GB	DC	TO	CT
2015	17-6	11	3	14	34	.324	24	.706	0	16	8	19	10
2016	17-0	4	5	9	22	.182	15	.682	0	4	8	17	6
TOTAL	34-6	15	8	23	56	.268	39	.696	0	20	16	36	16

22

2016 (Sophomore): Played in all 17 games for the Blue & Gray ... Scored four goals with five assists for nine points on the season ... Went 4-of-10 on free position shots ... Tallied eight draw controls, six caused turnovers and four ground balls for the year ... Scored a goal and an assist in loss to Florida ... Pulled in two draw controls against Loyola, and had two caused turnovers in Marquette win ... BIG EAST All-Academic.

2015 (Freshman): Appeared in all 17 games with six starts to her credit ... Georgetown's fifth-leading scorer with 11 goals and three assists for 14 points on the season ... Had 10 caused turnovers, 16 ground balls and eight draw controls for the year ... Named the BIG EAST Rookie of the Week on 3/31 ... Scored two goals against Penn, Loyola and Connecticut ... Had two ground balls, two caused turnovers and a draw control in the loss at Florida ... Managed two ground balls, two draw controls and a caused turnover in the regular season win over Connecticut.

Prior to Georgetown: A four-year letterwinner and two-year captain in lacrosse at Hanover High School ... Was an All-American in 2014 ... Named All-State twice, honorable mention as a sophomore and first team as a junior ... Named Academic All-American in 2013 ... Holds school records in single season points with 142 and single game scoring with 11 goals and six assists ... A member of the Honor Roll and a Peer Leader ... Also lettered in field hockey, swimming and basketball ... A state finalist in swimming as a junior ... Brother Danny plays lacrosse at Villanova.



GEORGIA TUNNEY

JUNIOR / MIDFIELDER / 5-7
TOWSON, MD. / NOTRE DAME PREP

YEAR	GP-GS	G	A	P	S	SHOT %	SOG	SOG%	GWG	GB	DC	TO	CT
2015	15-0	2	1	3	13	.154	9	.692	0	1	0	6	0
2016	17-0	7	0	7	26	.269	20	.769	0	7	6	13	3
TOTAL	32-0	9	1	10	39	.231	29	.744	0	8	6	19	3

24

2016 (Sophomore): Appeared in all 17 games for the Hoyas ... Scored seven goals on the year for seven points total ... Went 3-of-7 on free position attempts ... Managed seven ground balls, six draw controls and three caused turnovers on the year ... Scored two goals in Princeton loss and Duke win ... Pulled in three draw controls in loss to Florida ... Managed three ground balls in Cincinnati victory.

2015 (Freshman): Appeared in 15 games for the Hoyas ... Scored two goals with one assist for three points on the season ... Had goals against George Mason and Johns Hopkins ... Tallied an assist in the Vanderbilt victory.

Prior to Georgetown: A four-year letterwinner and starter at Notre Dame Prep ... Earned Baltimore Sun Second Team All-Metro ... Was selected as a Fox 45 Player of the Week ... Named a 2012 and 2014 Baltimore Sun Player to Watch ... Part of the 2011 Baltimore Metro Team ... Played club with TLC Lacrosse ... Team had a No. 9 national ranking and went to the IAAM Semifinals as a senior where she led the team in scoring ... Also played basketball, soccer and tennis ... Suffered an injury as a sophomore to miss two lacrosse seasons ... A member of the National Honor Society and the Math National Honor Society ... Volunteered at the Notre Dame Prep Gym Meet, at Blakehurst Retirement Community, the Salvation Army and with Reading Partners ... A high school and club teammate of fellow Hoya Caroline Drusano.





LILIANA BROWN

SOPHOMORE / ATTACK / 5-8
DARIEN, CONN. / DEERFIELD ACADEMY (BATES COLLEGE)

12

At Bates College: Played in eight games in one season at Bates ... Scored five goals on the year and dished out three assists ... Scored two goals, tallied an assist and recorded a ground ball in collegiate debut as Bates beat Sewanee 18-9 ... Scored a goal and tallied an assist in Bates' 14-5 win at Williams ... Scored two goals and tallied an assist in Bates' 17-5 win over Southern Maine ... Earned athletic and academic honors.

Prior to Georgetown: A four-year letterwinner and three-year starter at Deerfield Academy serving as team captain as a senior ... Played club with the CT Chargers ... Also played soccer and basketball ... Took a gap year after high school traveling to Nepal and Sri Lanka.



HAELLE CHOMO

SOPHOMORE / GOALIE / 5-5
NAPLES, FLA. / BARRON COLLIER

5

2016 (Freshman): Did not see game action.

Prior to Georgetown: A three-year letterwinner in high school ... Served as lacrosse team captain at Baron Collier her senior season ... An All-America honoree in 2015 also earning First Team All-Collier County and First Team All-NDN Team ... Played club lacrosse with Braveheart Lacrosse ... Also played basketball and golf ... Member of the Fellowship of Christian Athletes and the Yearbook Club.



TAYLOR GEBHARDT

SOPHOMORE / ATTACK / 5-7
BALDWINSVILLE, N.Y. / C.W. BAKER

YEAR	GP-GS	G	A	P	S	SHOT %	SOB	SOB%	GWG	GB	DC	TO	CT
2016	17-14	24	10	34	73	.329	53	.726	1	7	1	25	2
TOTAL	17-14	24	10	34	73	.329	53	.726	1	7	1	25	2

10



2016 (Freshman): Won the team's Red Star Award ... Named the BIG EAST Rookie of the Week on March 23, also earned a spot on the BIG EAST Weekly Honor Roll on April 5 ... Appeared in all 17 games for the Hoyas with 14 starts to her credit ... Tied for the lead in points with 34 on the season ... Was second in goals with 24, and ranked third in assists posting 10 ... Went 3-of-12 on free position attempts ... Picked up seven ground balls ... Posted two caused turnovers and one draw control for the season ... Scored four goals on two occasions, a win over George Mason and in the BIG EAST Championship game against Florida ... Tallied hat tricks in victories over Vanderbilt and Marquette ... Had two assists in the George Mason win for six points in the contest and went 2-of-3 on free position shots.

Prior to Georgetown: A four-year letterwinner and 2015 team captain at C.W. Baker ... Three-time First Team All-CNY and selection to the Post Standard All-CNY All-Star Team ... The Baldwinsville Team MVP and Offensive Player of the Year in 2014 and 2015 ... 2014 Under Armour All-Tournament Team ... Invited to the Team USA U-19 final tryouts ... A NYS Scholar-Athlete from 2012-15 ... Participated in the 2015 Nike Ride ... High school team was the state runner up in 2013 ... Totaled 158 career goals and 68 assists for 226 points at C.W. Baker ... Also ran cross country and played field hockey earning three varsity letters ... Member of the National Honor Society ... Participated in Math League, Yearbook Club and Key Club ... Played club with the Relentless Hustle Lacrosse Club ... Father, Greg, was a goalkeeper at Nazareth College and uncle, Jason, was a goalkeeper at Syracuse.



MEGAN MASSIMINO

SOPHOMORE / DEFENDER / 5-4
VILLANOVA, PA. / RADNOR

YEAR	GP-GS	G	A	P	S	SHOT %	SOB	SOB%	GWG	GB	DC	TO	CT
2016	3-0	0	0	0	0	.000	0	.000	0	0	0	0	0
TOTAL	3-0	0	0	0	0	.000	0	.000	0	0	0	0	0

13

2016 (Freshman): Appeared in three games for the Blue & Gray ... BIG EAST All-Academic.

Prior to Georgetown: A two-year letterwinner at Radnor ... Earned Honorable Mention All-Delco in 2015 ... A two-time Honorable Mention All-Main Line selection ... Selected as an Academic All-American in both 2014 and 2015 ... Named a Pansini Law Group Scholar-Athlete in 2015 ... Team went to the state finals in 2013 and the semifinals in 2015 ... Tallied 45 goals and 10 assists in her high school career ... Played four years of varsity basketball and three years of varsity soccer serving as team captain for both squads as a senior ... A member of the National Honor Society and on the Distinguished Honor Roll for all four years graduating with a 4.0 GPA ... Played club with Steps Elite with teammate Rachel Alberti ... Grandfather Rollie Massimino led the Villanova men's basketball team to the 1985 NCAA championship.



MARIAH MATHEIS

SOPHOMORE / ATTACK / 5-2
DARIEN, CONN. / DARIEN

YEAR	GP-GS	G	A	P	S	SHOT %	SOG	SOG%	GWG	GB	DC	TO	CT
2016	2-0	1	0	1	1	1.000	1	1.000	0	1	0	0	0
TOTAL	2-0	1	0	1	1	1.000	1	1.000	0	1	0	0	0

9

2016 (Freshman): Appeared in two games for the Hoyas ... Scored her first career goal against Florida for one point on the season ... Picked up a ground ball in the win over Villanova ... BIG EAST All-Academic.

Prior to Georgetown: Won four varsity letters and served as captain her senior year at Darien ... A member of the 2014 and 2015 Connecticut Team of the Year ... A two-time first team all-state and all-county honoree ... Also selected to the MSG Varsity All Tri-State on two occasions ... Named US Lacrosse First Team All-American in 2015 ... The 2015 USA Today High School Sports Connecticut Player of the Year ... Team won four county championships and three state championships ... Scored 155 goals with 67 assists in her high school career ... A member of the honor roll and SADD ... Played club lacrosse with the Connecticut Chargers and the Connecticut Grizzlies ... Also played field hockey in high school ... Brother, Case, plays men's lacrosse at Duke University.



MORGAN RYAN

SOPHOMORE / ATTACK / 5-2
MAPLEWOOD, N.J. / OAK KNOLL SCHOOL

YEAR	GP-GS	G	A	P	S	SHOT %	SOG	SOG%	GWG	GB	DC	TO	CT
2016	17-17	4	1	5	17	.235	13	.765	0	13	13	15	7
TOTAL	17-17	4	1	5	17	.235	13	.765	0	13	13	15	7

14

2016 (Freshman): Started all 17 games for the Blue & Gray ... Scored four goals with one assist for five points on the season ... Went 1-of-3 on free position attempts ... Managed 13 draw controls, 13 ground balls and seven caused turnovers on the season ... Had an assist in the Maryland game, and scored a goal in the win over George Mason ... Managed three draw controls, two ground balls and a caused turnover in the Princeton loss ... BIG EAST All-Academic.

Prior to Georgetown: A four-year letterwinner in both soccer and lacrosse at Oak Knoll School, serving as captain of both squads as a senior ... Named the 2015 Oak Knoll Athlete of the Year ... Earned team MVP, All-Prep A Team and first team all-league as a senior ... Selected to the 2015 US Lacrosse Girls High School All-America Squad ... Also named 2015 US Lacrosse Girls High School All-Academic ... Team won the Group 1 State Championship in both 2013 and 2015, also won the NJSIAA Tournament of Champions in 2015 ... Tallied 101 goals and 70 assists in her high school career ... Played club with Building Blocks Lacrosse ... A member of the Honor Roll.





FRANCESCA WHITEHURST

SOPHOMORE / MIDFIELDER / 5-5
BALTIMORE, MD. / ROLAND PARK COUNTRY SCHOOL

YEAR	GP-GS	G	A	P	S	SHOT %	SOG	SOG%	GWG	GB	DC	TO	CT
2016	17-17	23	11	34	42	.548	34	.810	2	19	19	19	6
TOTAL	17-17	23	11	34	42	.548	34	.810	2	19	19	19	6

26

2016 (Freshman): Second Team All-BIG EAST ... Won the team's Sheehan Stanwick Rookie of the Year Award ... Named the BIG EAST Rookie of the Week on March 3, and earned a spot on the BIG EAST Weekly Honor Roll on April 26 ... Started all 17 games for the Hoyas ... Tied for team lead in points with 34 on the year ... Ranked third in goals with 23 and second in assists posting 11 ... Went 2-of-5 on free position attempts ... Ranked third on the team in draw controls with 19 ... Tallied 19 ground balls and six caused turnovers ... Scored four goals in loss to Princeton ... Had three goals, one assist and three draw controls in Marquette win ... Managed two goals, two assists and two draw controls in loss to Connecticut ... Totaled two goals, one assist, three ground balls, three draw controls and two caused turnovers in loss to Loyola ... Became a member of the United States National Team.

Prior to Georgetown: A four-year letterwinner in lacrosse, soccer and basketball at Roland Park Country School ... Served as a two-year team captain for both soccer and lacrosse ... Won a silver medal with the US U-19 National Team at the 2015 World Cup and earned a spot on the All-World Team ... Named All-Metro for three-consecutive years and was a two-time high school All-American ... Earned Under Armour All-America honors ... Scored 198-career goals ... Selected as the Baltimore Messenger Lacrosse Athlete of the Year twice and earned Baltimore Messenger Athlete of the Year honors as a senior ... Played club with TLC Lacrosse ... A three-year all-conference honoree and earned one all-state selection in soccer ... Brother, Michael, plays football and baseball at Susquehanna ... Coached by former Hoyas Kristin Raneri Nicolini and Regan Raneri.



JOSEPHINE ZINN

SOPHOMORE / DEFENDER / 5-4
FRANKLIN LAKES, N.J. / IMMACULATE HEART ACADEMY

YEAR	GP-GS	G	A	P	S	SHOT %	SOG	SOG%	GWG	GB	DC	TO	CT
2016	17-2	0	0	0	0	.000	0	.000	0	10	3	6	5
TOTAL	17-2	0	0	0	0	.000	0	.000	0	10	3	6	5

17

2016 (Freshman): Appeared in all 17 games on the season with two starts to her credit ... Picked up 10 ground balls for the year ... Tallied five caused turnovers and three draw controls ... Picked up three ground balls with one draw control in BIG EAST Championship loss to Florida ... BIG EAST All-Academic.

Prior to Georgetown: A four-year letterwinner and two-year team captain at Immaculate Heart Academy ... A two-time First Team All-Bergen County, first team all-league, First Team All-Suburban and First Team All-North Jersey honoree in 2014 and 2015, as well as an Under Armour Underclass Team New Jersey All-American during both seasons ... Selected Second Team All-Bergen County, second team all-league, Second Team All-North Jersey, Second Team All-Suburban and All-New Jersey for School Girls in 2013 ... Named US Lacrosse Academic All-American in 2014 and 2015 ... Played club with Metro Magic ... A member of the Honor Roll earning distinguished honors as a junior and senior ... A member of the C.A.R.E. Club and BOOST program for autistic teens as well as a Sunday School teacher.



MICHAELA BRUNO

FRESHMAN / ATTACK / 5-5
GARDEN CITY, N.Y. / GARDEN CITY

Prior to Georgetown: A three-year starter at Garden City High School serving as team captain as a senior ... An Under Armour All-American, US Lacrosse First Team High School All-American, Newsday All-Long Island Girls Lacrosse and MSG Varsity All-Metro Girls Lacrosse selection in 2015 and 2016 ... Named Garden City High School Girls Lacrosse Most Outstanding Player as a senior ... An All-ILWomen High School Team honoree in 2016 ... Earned USA Today/American Family Insurance ALL-USA Girls Lacrosse First Team in 2015 ... Named to NYSPHSAA Girls Lacrosse State Championships All-Tournament Team in 2016 ... Team won the NYSPHSAA Girls Lacrosse State Tournament in 2016 ... Scored 124 career goals and tallied 75 assists ... Two-year US Lacrosse High School All-Academic Team selection and won the News 12 Long Island Scholar-Athlete Award for 2015-16 ... Member of the National Honor Society and Societas Linguae Latinae ... On the Principal's List/Honor Roll all four years ... Won the AP Scholar with Distinction Award ... ACL/NJCL National Latin Examination ... Magna Cum Laude in 2013 ... Competed in the American Mathematics Contest 10 in 2013 ... Took first place in Long Island and second in the state in The Stock Market Game in 2014 ... Member of the Future Business Leaders of America and the Miracle Club ... A four-year starter and senior captain in both field hockey and basketball ... Also a member of the Hoya field hockey squad ... Sister, Alexandra, played lacrosse at Princeton.



MICHELINE DINARDO

FRESHMAN / GOALIE / 5-9
RYE, N.Y. / RYE

Prior to Georgetown: A four-year starter and captain as a senior at Rye High School ... A two-time US Lacrosse First Team All-America selection ... Named US Lacrosse Academic All-American as a junior ... Con Edison Award Winner, and Lions Club Award Winner in 2016 ... Earned Hudson Valley Lacrosse First Team as a senior ... Section One All-Section and All-League from 2012-16 ... Named Rye High School Athlete of the Week as a senior ... Team won the league every year of her career ... Won the Ryan Adamson Sportsmanship Award ... Played club with the Connecticut Chargers and the Connecticut Grizzlies ... A member of the National Junior Honor Society, National Honor Society, High Honor Roll and a Rye High School Academic Scholar ... Served on the Athletic Advisory Committee ... A Rye varsity basketball manager ... Participated in the Adopt A US Soldier, the Animal Welfare Club and Garnet and Black Photography.

40



EMILY EHLE

FRESHMAN / ATTACK / 5-10
BALDWINSVILLE, N.Y. / CHRISTIAN BROTHERS ACADEMY

4

Prior to Georgetown: A four-year starter at Christian Brothers Academy ... Served as captain as a senior ... Earned First Team All-CNY in 2015 and 2016 ... Named the All-CNY Player of the Year in 2016 ... A US Lacrosse All-American 2015 and 2016 ... Won Nike/Lacrosse Magazine Northeast Region Player of the Year as a senior ... Team won the Class B state championship in 2013 and the Class A State Championship in 2016 ... Scored 195 career goals and had 107 career assists ... A four-year letterwinner on the soccer team, served as captain her senior season.



KATIE HUDSON

FRESHMAN / DEFENDER / 5-3
COLD SPRING HARBOR, N.Y. / COLD SPRING HARBOR

27

Prior to Georgetown: A four-year starter and captain at Cold Spring Harbor ... Four-time Honorable Mention All-Nassau County ... Named All-Nassau County in 2016 ... Team won Nassau County three times and was the Long Island champion in 2014 ... Squad was a state finalist in 2014 ... Played club with the Long Island Yellow Jackets for four years with Hoya Nicole Peragine ... A member of the honor roll ... Started for five years on the soccer team, served as team captain as a senior ... A four-year starter on the basketball team and captain in 2015 ... Earned the 2016 CSHHS Distinguished Athlete Award, the 2016 CSHHS Recipient Athlete Community Service Award and the 2016 CSHHS Most Athletic Award.



LIZA LIOTTA

FRESHMAN / MIDFIELDER / 5-4
BALTIMORE, MD. / ST. PAUL'S SCHOOL FOR GIRLS

6

Prior to Georgetown: A four-year starter and one-year captain at St. Paul's ... Member of the 2013 Baltimore Metro School Girls Team ... Team was the runner-up in the IAAM Championship B-Conference in 2016 ... Played club with Sky Walkers Lacrosse Club for seven years ... A member of the Cum Laude Honors Society, the High Honor and Effort Honor Roll, the French National Honor Society and the One Love Club ... Attended the IAAM Leadership Conference in 2013 and 2014 ... Sister, Maclean, played lacrosse at Colgate University.



NATALIA LYNCH

FRESHMAN / MIDFIELDER / 5-4
SMITHTOWN, N.Y. / SMITHTOWN WEST

16

Prior to Georgetown: A four-year starter and two-year captain at Smithtown West ... A four-time all-league and three-time all-county and all-tournament honoree ... Named All-American as a senior ... A member of Newsday's All-Long Island Team, and MSG Varsity's All-Metro First Team in 2016 ... High school team won the league and county ... Played with the Suffolk County All-Stars for eight years ... Earned Academic All-County as a junior and Academic All-America as a senior ... A four-year Scholar-Athlete selection ... A member of the National Honor Society, Math Honor Society, Italian Honor Society and Athletes Helping Athletes ... Was a starter and captain on the volleyball team, named all-league as a senior.



NOELLE PERAGINE

FRESHMAN / DEFENDER / 5-7
NORTHPORT, N.Y. / NORTHPORT

25

Prior to Georgetown: A three-year starter and two-year captain at Northport High School ... A three-time all-county honoree ... Won the NYSPHSAA Scholar-Athlete Award all four years ... Earned 2014 honorable mention all-conference ... A 2015 Academic All-American ... The two-time Midfield MVP ... Won the 2016 Northport High School Outstanding Student Athlete Award ... Played club with the Long Island Yellow Jackets with Hoya Katie Hudson ... A four-year starter and two-year captain in field hockey ... Was an all-state field hockey player ... Four-year member of the honor roll.



COULBY RIEHL

FRESHMAN / DEFENDER / 5-2
COCKEYSVILLE, MD. / NOTRE DAME PREP

19

Prior to Georgetown: A two-year starter and captain at Notre Dame Prep ... Wore the previously-retired Yearley Love #1 jersey ... Team made it to the IAAM semifinals in 2015 and 2016 ... Played club with TLC for six seasons ... Earned second honors and a member of both the Math Honor Society and Spanish Honor Society.



THIS IS GEORGETOWN WOMEN'S LACROSSE™



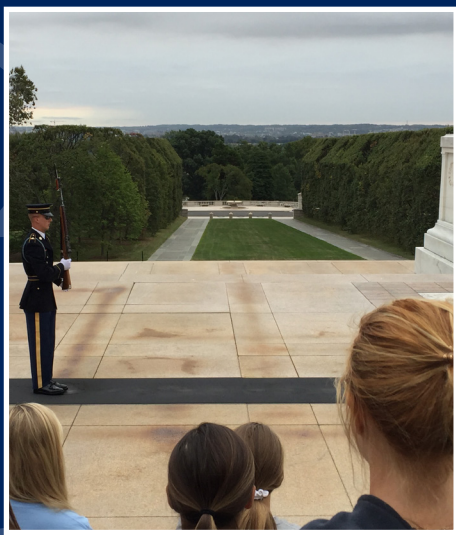
I CAME TO GEORGETOWN FOR THE BALANCE BETWEEN BOTH COMPETITIVE ATHLETICS AND ACADEMICS AND THE OPPORTUNITIES THAT WILL BE OPEN TO ME IN THE FUTURE FROM SUCH A PRESTIGIOUS PROGRAM.

— TAYLOR GEBHARDT



THE GEORGETOWN EXPERIENCE, TO ME, IS ALL ABOUT MAINTAINING A BALANCE IN ALL ASPECTS OF YOUR LIFE. YOU WILL LEARN TO **PUSH YOURSELF IN THE CLASSROOM AND ON THE FIELD**, AS WELL AS BUILD MEANINGFUL RELATIONSHIPS WITH THE PEOPLE AROUND YOU. OUR TEAMMATES AND COACHES ARE A GREAT RESOURCE AND SUPPORT SYSTEM THAT HELP YOU TO MANAGE ALL OF THESE THINGS AND KEEP A **GREAT PERSPECTIVE**

- SARAH CHENEY



BEING A STUDENT-ATHLETE HAS BEEN A **PRIVILEGE THAT HAS TAUGHT ME SKILLS** SUCH AS ORGANIZATION, WHICH WILL **PREPARE ME FOR MY FUTURE**. I AM EXCITED TO CONTINUE TO LEARN FROM MY EXPERIENCES HERE AND KNOW THAT I WILL LEAVE WITH MANY **GREAT MEMORIES**.

- CANDACE PALLITTO



GEORGETOWN™

BY THE NUMBERS



- 14 NCAA TOURNAMENT APPEARANCES
- 7 NATIONAL PLAYERS OF THE YEAR
- 8 NCAA QUARTERFINAL APPEARANCES
- 11 BIG EAST CHAMPIONSHIPS
- 2 NCAA FINALS APPEARANCES
- 1 BIG EAST TOURNAMENT CHAMPIONSHIP
- 53 ALL-AMERICANS
- 90 ALL-BIG EAST HONOREES
- 3 TEWAARATON TROPHY FINALISTS
- 19 BIG EAST MAJOR AWARD WINNERS
- 1 TEWAARATON TROPHY WINNER





CHRIS LINDSEY '98
NATIONAL GOALKEEPER OF THE YEAR - 1998



MICHI ELLERS '04
NATIONAL DEFENDER OF THE YEAR - 2004



CAITLIN MCLEAN '01
NATIONAL DEFENDER OF THE YEAR - 2001



MAGGIE KOCH '07
NATIONAL GOALKEEPER OF THE YEAR - 2006



SHEEHAN STANWICK '01
NATIONAL ATTACKER OF THE YEAR - 2001



ERIN ELBE '02
NATIONAL ATTACKER OF THE YEAR - 2002



BOWEN HOLDEN '01
NATIONAL GOALKEEPER OF THE YEAR - 2001

ALL-AMERICANS



CHLOE ASSELIN '07
THIRD TEAM - 2005



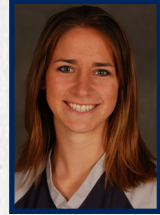
SUSANNE ATKINS '99
SECOND TEAM - 1999



KELLY BARNES '12
THIRD TEAM - 2012



MELISSA BILES '03
FIRST TEAM - 2002
THIRD TEAM - 2003



ALLISON CHAMBERS '05
SECOND TEAM - 2005



STACY DUCA '97
SECOND TEAM - 1996, 1997
THIRD TEAM - 1995
GEORGETOWN HALL OF FAME '16



ERIN ELBE '02
TEWAARATON AWARD - 2002
NATIONAL ATTACKER OF THE YEAR - 2002
FIRST TEAM - 2001, 2002
SECOND TEAM - 2000
THIRD TEAM - 1999



MICHI ELLERS '04
NATIONAL DEFENDER OF THE YEAR - 2004
FIRST TEAM - 2003, 2004



MOLLY FORD '10
SECOND TEAM - 2009, 2010
THIRD TEAM - 2008



LAUREN HILSKY '98
SECOND TEAM - 1998
THIRD TEAM - 1997
GEORGETOWN HALL OF FAME '17



BOWEN HOLDEN '01
NATIONAL GOALKEEPER OF THE YEAR - 2001
FIRST TEAM - 2001
SECOND TEAM - 2000



ASHLEY HUNTER '13
THIRD TEAM - 2013



ASHBY KAESTNER '10
FIRST TEAM - 2008
SECOND TEAM - 2009
THIRD TEAM - 2010



MAGGIE KOCH '07
NATIONAL GOALKEEPER OF THE YEAR - 2006
FIRST TEAM - 2006



CHRIS LINDSEY '98
NATIONAL GOALKEEPER OF THE YEAR - 1998
FIRST TEAM - 1998
SECOND TEAM - 1996
THIRD TEAM - 1997
GEORGETOWN HALL OF FAME '17



GLORIA LOZANO '04
SECOND TEAM - 2003, 2004
THIRD TEAM - 2002



LOGAN MCCRAW '11
FIRST TEAM - 2011
SECOND TEAM - 2012



CAITLIN MCLEAN '01
NATIONAL DEFENDER OF THE YEAR - 2001
FIRST TEAM - 2000, 2001



BRIDGET NOON '09
FIRST TEAM - 2009



SARAH OLIPHANT '05
THIRD TEAM - 2004

ALL-AMERICANS



COCO STANWICK '07
FIRST TEAM - 2005, 2006, 2007



SHEEHAN STANWICK '01
NATIONAL ATTACKER OF THE YEAR - 2001
FIRST TEAM - 2000, 2001
SECOND TEAM - 1999
THIRD TEAM - 1998



WICK STANWICK '03
FIRST TEAM - 2003
SECOND TEAM - 2002



CAROLINE TARZIAN '15
THIRD TEAM - 2013



SOPHIA THOMAS '13
SECOND TEAM - 2012
THIRD TEAM - 2011



JORDAN TRAUTMAN '09
SECOND TEAM - 2008



STEPHANIE ZODTNER '06
SECOND TEAM - 2006

2016 STATISTICS

OVERALL: 6-11 CONF: 4-3 HOME: 2-6 AWAY: 4-5 NEUT: 0-0

OFFENSIVE STATISTICS

NO.	NAME	GP	GS	G	A	PTS	SH	SHOT%	SOG	SOG%	GW	FPG	FPS	GB	DC	T/O	CT	FOULS
28	BANDOS, Kristen	17	17	28	6	34	80	.350	46	.575	0	7	15	18	39	25	13	25
10	GEBHARDT, Taylor	17	14	24	10	34	73	.329	53	.726	1	3	12	7	1	25	2	8
26	WHITEHURST,Francesca	17	17	23	11	34	42	.548	34	.810	2	2	5	19	19	19	6	10
4	ETCHISON, Corinne	17	17	21	12	33	46	.457	38	.826	0	3	6	25	3	18	5	4
25	RUBIN, Morgan	17	17	15	6	21	38	.395	30	.789	1	2	7	11	16	22	4	22
16	PERSELAY, Kelsey	17	17	10	3	13	19	.526	16	.842	2	5	8	5	32	7	4	15
3	LOVETT, Colleen	9	3	8	5	13	24	.333	19	.792	0	1	3	3	6	18	1	9
22	SEIBEL, Hannah	17	0	4	5	9	22	.182	15	.682	0	4	10	4	8	17	6	22
24	TUNNEY, Georgia	17	0	7	0	7	26	.269	20	.769	0	3	7	7	6	13	3	14
23	SNOUFFER, Kate	11	0	3	4	7	7	.429	6	.857	0	0	0	3	0	5	0	2
14	RYAN, Morgan	17	17	4	1	5	17	.235	13	.765	0	1	3	13	13	15	7	46
33	BULGIER, Natalie	11	0	1	0	1	5	.200	2	.400	0	1	2	1	2	3	0	5
29	MILLER, Natalie	17	17	1	0	1	1	1.000	1	1.000	0	0	0	22	17	11	11	30
9	MATHEIS, Mariah	2	0	1	0	1	1	1.000	1	1.000	0	0	0	1	0	0	0	0
2	IERNA, Kristen	7	0	1	0	1	1	1.000	1	1.000	0	0	0	0	0	1	0	2
7	CHENEY, Sarah	15	0	0	1	1	1	.000	1	1.000	0	0	0	2	1	4	3	7
8	DRUSANO, Caroline	5	0	0	1	1	0	.000	0	.000	0	0	0	0	0	0	1	0
21	RAUSA, Rachel	4	0	0	0	0	2	.000	2	1.000	0	0	1	0	0	0	0	0
39	SCHWALJE, Jenny	17	17	0	0	0	1	.000	0	.000	0	0	0	22	7	8	8	46
18	BOWLING, Kassandra	17	17	0	0	0	1	.000	0	.000	0	0	1	21	9	8	18	40
12	ALBERTI, Rachael	2	0	0	0	0	1	.000	1	1.000	0	0	1	0	0	0	0	0
55	MCDONALD, Megan	16	0	0	0	0	0	.000	0	.000	0	0	0	0	18	0	1	2
50	FISHER, Maddy	17	17	0	0	0	0	.000	0	.000	0	0	0	10	1	1	1	1
32	HEAGERTY, Annie	16	15	0	0	0	0	.000	0	.000	0	0	0	13	5	9	11	39
31	DRUSANO, Meredith	1	0	0	0	0	0	.000	0	.000	0	0	0	0	0	0	0	0
30	AUBIN, Shelby	12	0	0	0	0	0	.000	0	.000	0	0	0	3	0	0	3	3
20	PALLITTO, Candace	4	0	0	0	0	0	.000	0	.000	0	0	0	0	1	0	0	2
17	ZINN, Josephine	17	2	0	0	0	0	.000	0	.000	0	0	0	10	3	6	5	17
15	DUNN, Kathryn	1	0	0	0	0	0	.000	0	.000	0	0	0	0	0	0	0	0
13	MASSIMINO, Megan	3	0	0	0	0	0	.000	0	.000	0	0	0	0	0	0	0	0
11	MCGRAW, Libby	11	0	0	0	0	0	.000	0	.000	0	0	0	0	4	0	0	0
TOTAL		17		151	65	216	408	.370	299	.733	6	32	81	238	194	239	113	374
OPPONENTS		17		178	86	264	396	.449	298	.753	11	29	70	255	165	207	148	385

GOALIE STATISTICS

NO.	NAME	GP	GS	MINUTES	GA	GA AVG	SAVES	PCT	W	L	T	FACED
55	MCDONALD, Megan	16	0	486:24	76	9.38	63	.453	2	2	0	173
50	FISHER, Maddy	17	17	533:36	102	11.47	57	.358	4	9	0	223
TOTAL		17		1020:00	178	10.47	120	.403	6	11	0	396
OPPONENTS		17		1020:00	151	8.88	148	.495	11	6	0	408

GEORGETOWN'S TEAM PLAYER COAKLEY REALTY



GEORGETOWN UNIVERISTY'S TRI-CAPTAINS 1981 FOOTBALL TEAM

Left: Jim Corcoran, Financial Advisor / Former Defensive Back. Center: Rory S. Coakley, Real Estate Consultant / Former Linebacker. Right: John Federico, Thoracic Surgeon/Formal Running Back

Coakley Realty is your **SINGLE SOURCE** for Commercial and Residential Real Estate

The real estate industry is constantly changing, and Coakley Realty is there to assist you in making a prudent real estate decision.
Sales & Leasing • Property Management • Real Estate Tax Appeals • Appraisals & Consulting • Litigation Support

Call Rory S. Coakley for more details
(301) 340-8700 ext.101 | e-mail: rory@coakleyrealty.com | www.coakleyrealty.com



SAME GUYS, SAME PROFESSIONS

AWARDS & HONORS

NATIONAL ALL-AMERICANS

FIRST TEAM

- 2011 Logan McCraw '11
- 2009 Bridget Noon '09
- 2008 Ashby Kaestner '10
- 2007 Coco Stanwick '07
- 2006 Coco Stanwick '07
Maggie Koch '07
- 2005 Coco Stanwick '07
- 2004 Michi Ellers '04
- 2003 Michi Ellers '04
Wick Stanwick '03
- 2002 Melissa Biles '03
Erin Elbe '02
- 2001 Erin Elbe '02
Bowen Holden '01
Caitlin McLean '01
Sheehan Stanwick '01
- 2000 Caitlin McLean '01
Sheehan Stanwick '01
- 1998 Chris Lindsey '98

SECOND TEAM

- 2012 Sophia Thomas '13
- 2010 Molly Ford '10
Logan McCraw '11
- 2009 Molly Ford '10
Ashby Kaestner '10
- 2008 Jordan Trautman '09
- 2006 Stephanie Zodtner '06
- 2005 Allison Chambers '05
- 2004 Gloria Lozano '04
- 2003 Gloria Lozano '04
- 2000 Erin Elbe '02
Bowen Holden '01
- 1999 Susanne Atkins '99
Sheehan Stanwick '01
- 1997 Stacy Duca '97
Lauren Hilsky '98
- 1996 Stacy Duca '97
Chris Lindsey '98

THIRD TEAM

- 2013 Ashley Hunter '13
Caroline Tarzian '15
- 2012 Kelly Barnes '12
- 2011 Sophia Thomas '13
- 2010 Ashby Kaestner '10
- 2008 Molly Ford '10
- 2005 Chloe Asselin '07
- 2004 Sarah Oliphant '05
- 2003 Melissa Biles '03
- 2002 Gloria Lozano '04
Wick Stanwick '03
- 1999 Erin Elbe '02
- 1998 Sheehan Stanwick '01
- 1997 Chris Lindsey '98
- 1996 Lauren Hilsky '98
- 1995 Stacy Duca '97

U.S. NATIONAL TEAM

PLAYERS

CHRIS LINDSEY '98

Elite Team: 1998-2001
World Cup Team: 2005

BOWEN HOLDEN '02

Development Team: 1999-2001

CAITLIN MCLEAN '01

Development Team: 2001

SHEEHAN STANWICK '01

Elite Team: 2000-02
Development Team: 1998-99

ERIN ELBE '02

Elite Team: 2001-05
Development team: 1999-2000

MICHI ELLERS '04

Elite Team: 2006-11
Development team: 2004-05

ASHBY KAESTNER '10

National Team: 2010-12
Development Team: 2008-09

PLAYERS

MOLLY FORD '10

National Team: 2012-14

KELLY BARNES '12

National Team: 2012-14

CAROLINE TARZIAN '15

National Team: 2012-14

FRANCESCA WHITEHURST '19

National Team: 2016-present

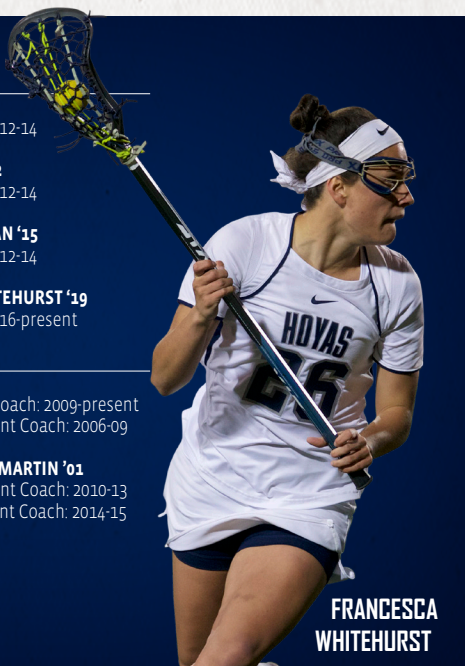
COACHING STAFF

RICKY FRIED

Elite Team Head Coach: 2009-present
Elite Team Assistant Coach: 2006-09

BOWEN HOLDEN MARTIN '01

Elite Team Assistant Coach: 2010-13
U-19 Team Assistant Coach: 2014-15



**FRANCESCA
WHITEHURST**

AWARDS & HONORS

NATIONAL PLAYERS OF THE YEAR

ATTACKER OF THE YEAR

- 2002 Erin Elbe
- 2001 Sheehan Stanwick

DEFENDER OF THE YEAR

- 2004 Michi Ellers
- 2001 Caitlin McLean

GOALKEEPER OF THE YEAR

- 2006 Maggie Koch
- 2001 Bowen Holden
- 1998 Chris Lindsey

TAWAARATON TROPHY

- 2002 Erin Elbe

TAWAARATON TROPHY FINALISTS

- 2004 Michi Ellers
- 2002 Erin Elbe
- 2001 Sheehan Stanwick

COACHING AWARDS

IWLCA SOUTH REGION COACH OF THE YEAR

- 2002 Kim Simons
- 2001 Kim Simons

IWLCA DIVISION I COACH OF THE YEAR

- 2001 Kim Simons

360LACROSSE.COM DIVISION I COACH OF THE YEAR

- 2001 Kim Simons

ACADEMIC HONORS

ALL-DISTRICT ACADEMIC ALL-AMERICAN SECOND TEAM

- 2006 Chloe Asselin
- 2005 Lauren Redler
- 2003 Melissa Biles

IWLCA ACADEMIC HONOR ROLL

- 2015 Lindy Firstenberg
- Betsy Holland
- Megan Marinelli
- 2013 Jody Cumberpatch
- Betsy Holland
- 2012 Kelly Barnes
- Kristen Coleman
- 2011 Kathleen Dwyer
- Logan McCraw
- 2010 Caitlin Formby
- Ashby Kaestner
- 2008 Megan Bloomer
- Amelia Wesselink
- 2005 Paige Andrews
- Lauryn Bernier
- Lauren Redler
- 2004 Lauryn Bernier
- Lauren Redler
- 2003 Hilary Polk-Williams
- Melissa Biles
- 2001 Bowen Holden
- Caitlin McLean
- 2000 Caitlin McLean
- Susan Stewart
- 1999 Beth Doty
- Susan Stewart



TEAM & UNIVERSITY AWARDS

MOST VALUABLE PLAYER

- 2016 Kristen Bandos '16
- 2015 Adrienne Devine '15
- 2014 Kelyn Freedman '14
- 2013 Ashley Hunter '13
- 2012 Kelly Barnes '12
- 2011 Logan McCraw '11
- 2010 Molly Ford '10
- 2009 Ashby Kaestner '10
Bridget Noon '09
- 2008 Ashby Kaestner '10
- 2007 Maggie Koch '07
Coco Stanwick '07
- 2006 Stephanie Zodtner '06
- 2005 Coco Stanwick '07
Allison Chambers '05
- 2004 Michi Ellers '04
- 2003 Michi Ellers '04
Wick Stanwick '03
- 2002 Erin Elbe '02
- 2001 Sheehan Stanwick '01
- 2000 Bowen Holden '01
Sheehan Stanwick '01
- 1999 Bowen Holden '01
Sheehan Stanwick '01
- 1998 Chris Lindsey '98
- 1997 Stacy Duca '97
- 1996 Chrissy Flynn '96
Chris Lindsey '98

MOST IMPROVED PLAYER

- 2016 Kelsey Perselay '16
- 2015 Kassandra Bowling '16
- 2014 Courtney Caputo '14
- 2013 Casey McGowan '15
- 2012 Maggie Brown '14
- 2011 Mary Wittelserger '11
- 2010 Sarah Seats '10
- 2009 Margot Ellis '09
- 2008 Amelia Wesselink '08
- 2007 Megan Ellis '07
- 2006 Paige Andrews '06
- 2005 Chloe Asselin '07
- 2004 Catherine Elbe '05
- 2003 Sarah Oliphant '05
- 2002 Tracy Weicke '02
- 2001 Gloria Lozano '01
- 2000 Liz Ryan '03
- 1999 Chandler Vicchio '02
Danielle Boehmcke '02
- 1998 Caitlin McLean '01
- 1997 Libby Driscoll '97
- 1996 Wendy Hudson '97

BULLDOG AWARD FOR OUTSTANDING EFFORT AND CONTRIBUTION

- 2016 Kassandra Bowling '16
- 2015 Caroline Tarzian '15
- 2014 Adrienne Devine '15
- 2013 Adrienne Devine '15
- 2012 Carly Napora '12
- 2011 Jordy Kirr '11
- 2010 Caitlin Formby '10
- 2009 Jordan Trautman '09
- 2008 Zan Morley '08
- 2007 Brittany Baschuk, 07
- 2006 Kristin Smith '06
- 2005 Stephanie Zodtner '06
- 2004 Anouk Peters '04
- 2003 Bethany Feil '03
- 2002 Susan Graser '02
- 2001 Caitlin McLean '01
- 2000 Susan Stewart '00
Caitlin McLean '01
- 1999 Susanne Atkins '99
- 1997 Liz Howard '97

KIM SIMONS COACHES AWARD

For the player who best demonstrates the qualities of coachability, positive attitude and leadership

- 2016 Corinne Etchison '16
- 2015 Mollie Caputo '15
- 2014 MJ Coyle '14
- 2013 MJ Coyle '14
- 2012 Kelly Barnes '12
- 2011 Mary Beth Brophy '11
- 2010 Molly Ford '10
- 2009 Bridget Noon '09
- 2008 Patty Piotrowicz '08
- 2007 Coco Stanwick '07
- 2006 Stephanie Zodtner '06
- 2005 Sarah Oliphant '05

COACHES AWARD: 1996-2003

- 2004 Michi Ellers '04
- 2003 Melissa Biles '03
- 2002 Kristin Raneri '02
- 2001 Gussie Habeck '01
- 2000 Kristen Baer '00
- 1999 Beth Doty '99
- 1998 Lauren Hilsky '98
- 1997 Lauren Hilsky '98
- 1996 Liz Howard '97

SHEEHAN STANWICK ROOKIE AWARD

- 2016 Francesca Whitehurst '16
- 2015 Hannah Seibel '18
- 2014 Maddy Fisher '17
- 2013 Corinne Etchison '16
- 2012 Caroline Tarzian '15
- 2011 Hannah Franklin '14
- 2010 Sophia Thomas '13
- 2009 Kelly Barnes '12
- 2008 Jordy Kirr '11
- 2007 Ashby Kaestner '10
- 2006 Courtney Hubschmann '09
- 2005 Patty Piotrowicz '08

DENIS KANACH HOYA AWARD

For the "unsung hero" who best demonstrates unselfish play and a true team spirit

- 2016 Natalie Miller '16
- 2015 Casey McGowan '15
- 2014 Reilly Woodman '14
- 2013 Dina Jackson '13
- 2012 Ashley Hunter '13
- 2011 Kelsi Bozel '13
- 2010 Kelly Barnes '12
- 2009 Katie Burton '09
- 2008 Bridget Noon '09
- 2007 Laura Cipro '07
- 2006 Lucy Poole '06
- 2005 Catherine Elbe '05

HOYA AWARD: 1996-2004

- 2004 Gloria Lozano '04
- 2003 Liz Ryan '03
- 2002 Chandler Vicchio '02
- 2001 Sarah Oglesby '01
- 2000 Jordan Keating '00
- 1999 Mary Ellen Oliver '99
- 1998 Holly Urick '98
- 1996 Libby Driscoll '97

STAR AWARD

- 2016 Kristen Bandos '16
- 2015 Adrienne Devine '15
- 2014 Adrienne Devine '15

RED STAR AWARD

- 2016 Taylor Gebhardt '19
- 2015 Lauren Schwalje '15
- 2014 Kelsey Perselay '16

PROF. CHRISTOPHER JOYNER 13TH MAN AWARD

- 2016 Greg Featherston
- 2015 Emily Deck
- 2014 Josh LaRosa
- 2013 Cristina Nistler
- 2012 Shelly Habel
- 2011 Barbara Barnes
- 2010 Stefanie Sparks
- 2009 Jamie Breslin
- 2008 Joanne Davis
- 2007 Ray Hendrickson

ROBERT A. DUFFY SCHOLAR-ATHLETE AWARD

- 2001 Bowen Holden '01
- 1997 Stacey Duca '97

GEORGETOWN HALL OF FAME

- 2016 Stacey Duca '97
- 2017 Lauren Hilsky '98
- 2017 Chris Lindsey '98

HANNAH SEIBEL



BIG EAST AWARDS

FIRST TEAM

- 2016 Kristen Bandos '16
Corinne Etchison '16
- 2015 Kristen Bandos '16
Adrienne Devine '15
Caroline Tarzian '15
- 2014 Adrienne Devine '15
Kelyn Freedman '14
Caroline Tarzian '15
- 2013 Kelyn Freedman '14
Ashley Hunter '13
Caroline Tarzian '15
- 2012 Kelly Barnes '12
Sophia Thomas '13
Kelsi Bozel '13
- 2011 Jordy Kirr '11
Logan McCraw '11
Sophia Thomas '13
- 2010 Kelly Barnes '12
Molly Ford '10
Ashby Kaestner '10
Logan McCraw '11
- 2009 Bridget Noon '09
Molly Ford '10
Ashby Kaestner '10
- 2008 Jordan Trautman '09
Molly Ford '10
Ashby Kaestner '10
- 2007 Laura Cipro '07
Maggie Koch '07
Coco Stanwick '07
- 2006 Maggie Koch '07
Lucy Poole '06
Coco Stanwick '07
Stephanie Zodtner '06
- 2005 Chloe Asselin '07
Allison Chambers '05
Coco Stanwick '07
- 2004 Michi Ellers '04
Gloria Lozano '04
Sarah Oliphant '05
Sarah Robinson '05
- 2003 Michi Ellers '04
Gloria Lozano '04
Wick Stanwick '03
- 2002 Melissa Biles '03
Erin Elbe '02
Gloria Lozano '04
- 2001 Erin Elbe '02
Bowen Holden '01
Caitlin McLean '01
Sheehan Stanwick '01

SECOND TEAM

- 2016 Cassandra Bowling '16
Francesca Whitehurst '19
- 2015 Corinne Etchison '16
Maddy Fisher '17
Megan Marinelli '15
- 2014 Maggie Brown '14
Corinne Etchison '16
Hannah Franklin '14
- 2013 Kelsi Bozel '13
Sophia Thomas '13
- 2012 Dina Jackson '13
Ashley Hunter '13
Caroline Tarzian '15
- 2011 Kelly Barnes '12
Kelsi Bozel '13
Dina Jackson '13
- 2010 Caitlin Formby '10
Jordy Kirr '11
- 2009 Megan Bloomer '09
Jordan Trautman '09
Caitlin Formby '10
Jordy Kirr '11
- 2008 Caitlin Formby '10
Jordy Kirr '11
- 2007 Patty Piotrowicz '07
- 2006 Chloe Asselin '07
Laura Cipro '07
- 2005 Catherine Elbe '05
Sarah Robinson '05
Stephanie Zodtner '06
- 2004 Anouk Peters '04
Allison Chambers '05
- 2003 Melissa Biles '03
Anouk Peters '04
Liz Ryan '03
- 2002 Liz Ryan '03
Wick Stanwick '03
- 2001 Sarah Oglesby '01
Wick Stanwick '03

ATTACKER OF THE YEAR

- 2007 Coco Stanwick '07
- 2005 Coco Stanwick '07
- 2003 Wick Stanwick '03
- 2002 Erin Elbe '02
- 2001 Sheehan Stanwick '01

MIDFIELDER OF THE YEAR

- 2011 Sophia Thomas '13
- 2009 Ashby Kaestner '10
- 2003 Gloria Lozano '04

DEFENDER OF THE YEAR

- 2011 Logan McCraw '11
- 2009 Bridget Noon '09
- 2007 Maggie Koch '07
- 2006 Maggie Koch '07
- 2005 Chloe Asselin '07
- 2004 Michi Ellers '04
- 2003 Michi Ellers '04
- 2001 Caitlin McLean '01

COACH OF THE YEAR

- 2010 Ricky Fried
- 2009 Ricky Fried
- 2002 Kim Simons
- 2001 Kim Simons

bold indicates current student-athlete



**KRISTEN
BANDOS**

CAREER RECORDS

GOALS

Rk.	Name	Goals	Seasons
1.	Sheehan Stanwick	232	1998-01
2.	Erin Elbe	211	1999-02
3.	Coco Stanwick	199	2004-07
4.	Wick Stanwick	164	2000-03
5.	Lauren Hilsky	152	1995-98
6.	Molly Ford	150	2007-10
7.	Ashby Kaestner	143	2007-10
8.	Erika Gabrielsen	141	1986-89
9.	Stacy Duca	136	1994-97
10.	Caroline Tarzian	124	2012-15
11.	Jordy Kirr	116	2008-11
	Catherine Tuthill	116	1992-95
13.	Margo Doyle	115	1991-94
	Sophia Thomas	115	2010-13
15.	Chrissy Flynn	110	1993-96
16.	Allison Chambers	109	2002-05
17.	Kelyn Freedman	98	2011-14
18.	Gloria Lozano	97	2001-04
19.	Anouk Peters	91	2001-04
20.	Dina Jackson	88	2010-13
21.	Kristi Middleton	87	1989-92
22.	Sarah Oglesby	84	1998-01
23.	Hannah Franklin	83	2011-14
24.	Kristen Baer	81	1997-00
25.	Kate Ahearn	77	1999-02

CAREER POINTS

Rk.	Name	G	A	Pts	Seasons
1.	Sheehan Stanwick	232	98	330	1998-01
2.	Erin Elbe	211	80	291	1999-02
3.	Coco Stanwick	199	85	284	2004-07
4.	Jordy Kirr	116	105	221	2008-11
5.	Wick Stanwick	164	54	218	2000-03
6.	Molly Ford	150	64	214	2007-10
7.	Lauren Hilsky	152	46	198	1995-98
8.	Erika Gabrielsen	141	53	194	1986-89
	Chrissy Flynn	110	84	194	1993-96
	Ashby Kaestner	143	47	190	2007-10
11.	Caroline Tarzian	124	51	175	2012-15
	Stacy Duca	136	26	162	1994-97
13.	Catherine Tuthill	116	37	153	1992-95
	Allison Chambers	109	43	152	2002-05
15.	Kristi Middleton	87	56	143	1989-92
	Margo Doyle	115	28	143	1991-94
	Sophia Thomas	115	23	138	2010-13
18.	Corinne Etchison	83	44	127	2013-16
19.	Gloria Lozano	97	29	126	2001-04
20.	Sarah Oliphant	65	56	121	2002-05
21.	Kelyn Freedman	98	22	120	2011-14
22.	Liz Ryan	53	66	119	2000-03
23.	Sarah Oglesby	84	34	118	1998-01
24.	Kristen Baer	81	32	113	1997-00
25.	Beth Anderson	76	35	111	1983-86

ASSISTS

Rk.	Name	Assists	Seasons
1.	Jordy Kirr	105	2008-11
2.	Sheehan Stanwick	98	1998-01
3.	Coco Stanwick	85	2004-07
4.	Chrissy Flynn	84	1993-96
5.	Erin Elbe	80	1999-02
6.	Liz Ryan	66	2000-03
7.	Molly Ford	64	2007-10
8.	Kristi Middleton	56	1989-92
	Sarah Oliphant	56	2002-05
10.	Wick Stanwick	54	2000-03
11.	Erika Gabrielsen	53	1986-89
12.	Caroline Tarzian	51	2012-15
13.	Tara Breen	50	1987-90
14.	Ashby Kaestner	47	2007-10
15.	Lauren Hilsky	46	1995-98
16.	Corinne Etchison	44	2013-16
17.	Allison Chambers	43	2002-05
18.	Michelle Cajulis	39	1991-94
19.	Catherine Tuthill	37	1992-95
20.	Beth Anderson	35	1983-86
21.	Sara Zorzi	34	2004-06
	Sarah Oglesby	34	1998-01
	Erin Lovett	34	2009-13
24.	Kristen Baer	32	1997-00
25.	Rosie Corcoran	31	2010-13



CAREER RECORDS

DRAWES

Rk.	Name	Draws	Seasons
1.	Gloria Lozano	223	2001-04
2.	Coco Stanwick	198	2004-07
3.	Sarah Oglesby	184	1998-01
4.	Ashby Kaestner	147	2007-10
	Stacy Duca	147	1994-97
6.	Kelsi Bozel	136	2010-13
7.	Kelyn Freedman	135	2011-14
8.	Bridget Noon	101	2006-09
	Erin Elbe	101	1999-02
10.	Logan McCraw	97	2008-11
11.	Lauren Hilsky	96	1995-98
12.	Kelsey Perselay	94	2013-16
	Michi Ellers	94	2001-04
14.	Fay O'Neill	93	1992-95
15.	Patty Piotrowicz	85	2005-08
16.	Allison Chambers	84	2002-05
17.	Adrienne Devine	79	2012-15
18.	Liz Ryan	75	2000-03
	Sophia Thomas	75	2010-13
20.	Megan Bloomer	74	2006-09
21.	Kristen Bandos	72	2013-16
	Lauryn Bernier	72	2002-05
23.	Alison O'Neil	69	1992-95
24.	Anouk Peters	68	2001-04
	Sheehan Stanwick	68	1998-01

GROUND BALLS

Rk.	Name	Ground Balls	Seasons
1.	Erin Elbe	240	1999-02
2.	Chris Lindsey	237	1995-98
3.	Liz Ryan	223	2000-03
4.	Michi Ellers	216	2001-04
5.	Caitlin McLean	214	1998-01
6.	Sarah Oglesby	196	1998-01
7.	Sheehan Stanwick	193	1998-01
8.	Lauren Hilsky	180	1995-98
9.	Stacy Duca	179	1994-97
10.	Fay O'Neill	172	1992-95
11.	Gloria Lozano	171	2001-04
12.	Allison Chambers	165	2002-05
13.	Reagan Raneri	162	1998-01
14.	Lauryn Bernier	144	2002-05
15.	Mary Ellen Oliver	142	1996-99
16.	Coco Stanwick	138	2004-07
17.	Alison O'Neil	134	1992-95
18.	Stephanie Zodtner	133	2003-06
19.	Bowen Holden	132	1998-01
20.	Susan Stewart	120	1997-00
21.	Libby Driscoll	119	1994-97
22.	Laura Cipro	116	2004-07
23.	Jordan Keating	114	1997-00
	Jordan Trautman	114	2006-09
	Ashby Kaestner	114	2007-10
	Logan McCraw	114	2008-11

CAUSED TURNOVERS

Rk.	Name	Caused Turnovers	Seasons
1.	Michi Ellers	204	2001-04
2.	Caitlin McLean	108	1998-01
3.	Melissa Biles	94	2000-03
4.	Adrienne Devine	93	2012-15
	Erin Elbe	93	1999-02
6.	Sophia Thomas	91	2010-13
7.	Stephanie Zodtner	88	2003-06
8.	Ashby Kaestner	86	2007-10
9.	Elizabeth Ryan	83	2000-03
	Reagan Raneri	80	1998-01
11.	Allison Chambers	79	2002-05
12.	Ashley Hunter	78	2010-13
13.	Jordan Trautman	77	2006-09
14.	Gloria Lozano	76	2001-04
15.	Sarah Oglesby	75	1998-01
	Logan McCraw	75	2008-11
17.	Laura Cipro	71	2004-07
18.	Lauryn Bernier	70	2002-05
	Kelly Barnes	70	2009-12
20.	Kelyn Freedman	68	2011-14
21.	Bridget Noon	66	2006-09
22.	Anouk Peters	64	2001-04
23.	Chloe Asselin	61	2004-07
24.	Gussie Habeck	60	1998-01
	Susan Stewart	60	1998-00*

SAVES

Rk.	Name	Saves	GP	Seasons
1.	Chris Lindsey	1067	65	1995-98
2.	Bowen Holden	747	66	1999-01
3.	Meg Allen	561	57	1988-91
4.	Caitlin Formby	440	59	2007-10
5.	Sarah Robinson	374	58	2002-05
6.	Maggie Koch	358	49	2005-07
7.	Pat McKeon	305	29	1993-95
8.	Barb Black	275	63	2011-14
9.	Maddy Fisher	235	54	2014-pres.
10.	Karen Heisler	210	22	1985-88
11.	Chandler Vicchio	182	42	1999-02
12.	Laura Greene	180	14	1983-84
13.	Kathy Tromble	135	14	1992
14.	Megan McDonald	100	34	2013-16
15.	Sally Daily	93	9	1982

bold indicates current student-athlete

* statistic not recorded prior to 1998

SINGLE-SEASON RECORDS

GOALS

Rk.	Name	G	Season
1.	Sheehan Stanwick	75	2001
2.	Coco Stanwick	63	2007
3.	Coco Stanwick	60	2006
	Erin Elbe	60	2001
5.	Coco Stanwick	59	2005
6.	Erin Elbe	58	2002
7.	Molly Ford	55	2009
8.	Sheehan Stanwick	53	2000
	Sheehan Stanwick	53	1998
10.	Ashby Kaestner	52	2008
11.	Molly Ford	51	2010
	Sheehan Stanwick	51	1999
13.	Wick Stanwick	50	2002
	Lauren Hilsky	50	1998
15.	Wick Stanwick	48	2003
	Wick Stanwick	48	2001
17.	Erin Elbe	47	1999
	Margo Doyle	47	1993
	Erika Gabrielsen	47	1986
20.	Erin Elbe	46	2000
21.	Stacy Duca	45	1997
22.	Ashby Kaestner	44	2009
23.	Molly Ford	42	2008
	Kristi Middleton	42	1991
25.	Jordy Kirr	39	2009
	Lauren Hilsky	39	1996

ASSISTS

Rk.	Name	A	Season
1.	Sheehan Stanwick	40	2001
2.	Jordy Kirr	37	2008
3.	Sara Zorzi	33	2006
4.	Coco Stanwick	28	2004
5.	Liz Ryan	27	2002
6.	Jordy Kirr	26	2011
	Erin Elbe	26	2001
	Sheehan Stanwick	26	1999
	Chrissy Flynn	26	1995
10.	Molly Ford	25	2010
	Jordy Kirr	25	2009
12.	Coco Stanwick	24	2007
	Sarah Oliphant	24	2005
14.	Rosie Corcoran	23	2013
	Chrissy Flynn	23	1994
	Erin Elbe	23	2002
	Kristi Middleton	23	1991
18.	Chrissy Flynn	22	1996
19.	Molly Ford	21	2008
20.	Sarah Oliphant	20	2004
	Wick Stanwick	20	2002
	Tara Breen	20	1989
23.	Coco Stanwick	20	2005
24.	Erin Elbe	19	2000
	Sheehan Stanwick	19	2000
	Kristi Middleton	19	1992

DRAWN

Rk.	Name	D	Season
1.	Coco Stanwick	113	2006
2.	Gloria Lozano	81	2003
3.	Coco Stanwick	79	2007
4.	Sarah Oglesby	75	2000
5.	Gloria Lozano	66	2002
6.	Gloria Lozano	57	2004
7.	Kelsi Bozel	51	2013
8.	Ashby Kaestner	48	2010
9.	Kelyn Freedman	47	2014
	Reilly Woodman	47	2014
	Ashby Kaestner	47	2008
10.	Kelyn Freedman	46	2013
11.	Stacy Duca	45	1994
12.	Ashby Kaestner	43	2009
	Lauren Hilsky	43	1998
	Stacy Duca	43	1997
15.	Bridget Noon	42	2009
	Logan McCraw	42	2011
19.	Adrienne Devine	41	2014
20.	Kristen Bandos	39	2016
	Logan McCraw	39	2010
22.	Sarah Oglesby	38	1999
	Kelsi Bozel	38	2012
24.	Kelsey Perselay	37	2015
	Michi Ellers	37	2004
	Sarah Oglesby	37	1998



POINTS IN A SEASON

Rk.	Name	G	A	P	Season
1.	Sheehan Stanwick	75	40	115	2001
2.	Coco Stanwick	63	24	87	2007
3.	Erin Elbe	60	26	86	2001
4.	Erin Elbe	58	23	81	2002
5.	Coco Stanwick	59	20	79	2005
6.	Sheehan Stanwick	51	26	77	1999
7.	Molly Ford	51	25	76	2010
8.	Coco Stanwick	60	13	73	2006
9.	Molly Ford	55	17	72	2009
	Sheehan Stanwick	53	19	72	2000
11.	Wick Stanwick	50	20	70	2002
12.	Sheehan Stanwick	53	13	66	1998
13.	Ashby Kaestner	52	13	65	2008
	Erin Elbe	46	19	65	2000
	Kristi Middleton	42	23	65	1991
16.	Jordy Kirr	39	25	64	2009
	Wick Stanwick	48	16	64	2003
18.	Molly Ford	42	21	63	2008
19.	Ashby Kaestner	44	18	62	2009
	Erika Gabrielsen	47	15	62	1986
21.	Chrissy Flynn	38	22	60	1996
22.	Wick Stanwick	48	11	59	2001
	Erin Elbe	47	12	59	1999
	Lauren Hilsky	50	9	59	1998
	Margo Doyle	47	12	59	1993

SINGLE-SEASON RECORDS

GROUND BALLS

Rk.	Name	GB	Season
1.	Chris Lindsey	81	1996
2.	Erin Elbe	72	2000
3.	Sheehan Stanwick	71	2000
4.	Chris Lindsey	67	1997
5.	Liz Ryan	66	2002
	Caitlin McLean	66	2000
7.	Erin Elbe	65	2002
8.	Caitlin McLean	64	1999
9.	Liz Ryan	61	2001
	Kristen Baer	61	2000
11.	Liz Ryan	60	2003
	Kristen Raneri	60	2002
13.	Gloria Lozano	58	2002
14.	Sarah Oglesby	57	2000
	Stacy Duca	57	1997
16.	Michi Ellers	56	2001
	Caitlin McLean	56	2001
18.	Lauryn Bernier	55	2004
	Michi Ellers	55	2004
	Michi Ellers	55	2003
	Reagan Raneri	55	2000
22.	Bowen Holden	53	2000
	Sarah Oglesby	53	1999
	Chris Lindsey	53	1998
	Lauren Hilsky	53	1996

CAUSED TURNOVERS

Rk.	Name	CT	Season
1.	Michi Ellers	66	2004
2.	Michi Ellers	56	2003
3.	Michi Ellers	48	2001
4.	Adrienne Devine	39	2014
5.	Caitlin McLean	36	2001
6.	Kristin Raneri	35	2002
	Reagan Raneri	35	1999
8.	Michi Ellers	34	2002
	Caitlin McLean	34	2000
10.	Sophia Thomas	34	2011
	Ashby Kaestner	33	2008
	Beth Doty	33	1999
13.	Logan McCraw	32	2010
14.	Anouk Peters	30	2003
15.	Jordan Trautman	29	2008
16.	Adrienne Devine	28	2015
	Chloe Asselin	28	2005
	Susan Stewart	28	2000
	Caitlin McLean	28	1999
19.	Kelyn Freedman	27	2014
	Bridget Noon	27	2008
	Allison Chambers	27	2005
	Lauryn Bernier	27	2003
	Erin Elbe	27	2001
	Gussie Habeck	27	2000
	Megan Marinelli	27	2012



KELYN FREEDMAN

SAVES

Rk.	Name	S	GP	Season
1.	Chris Lindsey	295	16	1998
2.	Chris Lindsey	293	17	1995
3.	Chris Lindsey	244	15	1996
4.	Chris Lindsey	235	17	1997
5.	Bowen Holden	231	17	2000
6.	Bowen Holden	199	17	1999
7.	Meg Allen	178	13	1990
8.	Pat McKeon	170	13	1993
9.	Meg Allen	167	16	1991
10.	Maggie Koch	165	18	2006
11.	Meg Allen	159	19	1989
12.	Sarah Robinson	158	18	2004
13.	Maggie Koch	152	18	2007
14.	Caitlin Formby	149	19	2008
15.	Caitlin Formby	147	19	2010
16.	Bowen Holden	146	18	2001
17.	Caitlin Formby	139	19	2009
18.	Chandler Vicchio	135	19	2002
	Katy Tromble	135	14	1992
20.	Pat McKeon	132	14	1994
21.	Laura Greene	126	9	1984
22.	Sarah Robinson	108	18	2005
23.	Barb Black	100	17	2012
24.	Sarah Robinson	99	15	2003
25.	Barb Black	96	19	2013

SAVE PERCENTAGE

Rk.	Name	SAVE %	Season
1.	Chris Lindsey	0.720	1996
2.	Chris Lindsey	0.688	1995
3.	Chris Lindsey	0.674	1998
4.	Meg Allen	0.657	1990
5.	Chris Lindsey	0.656	1997
6.	Laura Greene	0.649	1984
7.	Bowen Holden	0.628	2000
8.	Meg Allen	0.620	1988
9.	Karen Heuissler	0.619	1985
10.	Bowen Holden	0.578	1999

GOALS AGAINST AVERAGE

Minimum nine games played, no goalkeeper stats from 1978-81

Rk.	Name	GAA	Season
1.	Chris Lindsey	6.38	1996
2.	Maggie Koch	6.80	2006
3.	Chandler Vicchio	6.92	2001
4.	Bowen Holden	7.10	2001
5.	Chris Lindsey	7.28	1997
6.	Meg Allen	7.32	1990
7.	Laura Green	7.56	1984
8.	Chris Lindsey	7.73	1995
9.	Sarah Robinson	7.80	2004
10.	Chandler Vicchio	7.89	2002

ALL-TIME ROSTER

Agresta, Lisa.....1996	Cassidy, Alison.....1982	Firstenberg, Lindy.....2014-15	Hughes, Julie.....1987
Ahearn, Kate.....1999-2002	Castellani, Julie.....1982-84	Fisher, Cecily.....1980	Hunter, Ashley.....2010-13
Alberti, Rachel.....2016	Chambers, Allison.....2002-05	Fisher, Maddy.....2014-pres.	Ierna, Kristen.....2015-16
Alexander, Meghan.....1995	Chapin, Anne.....1980	Fitzsimons, Ellie.....1998-99	Ignacio, Amanda.....2015
Alexander, Pam.....1985	Chapin, Robin.....1978	Fluehr, Kimberly.....1993	Irish, Stacie.....1985
Allen, Meg.....1988-91	Cheney, Sarah.....2015-pres.	Fluet, Jenny.....1987	Jackson, Dina.....2010-13
Altieri, Kristin.....1987	Chomo, Haelle.....2016-pres.	Flynn, Christine.....1993-96	Janez, Susan.....1986
Anderson, Beth.....1983-86	Ciovacco, Lauren.....1996	Flynn, Kerri.....1993-94	Jose, Maria.....1994
Andrews, Paige.....2003-06	Cipro, Laura.....2004-07	Foley, Grace.....2014	Joyce, Jane.....1980
Archer, Kier.....1997	Clark, Patti.....1980	Foody, Erin.....1984	Joyce, Mary Ann.....1980
Asselin, Chloe.....2004-07	Clohesy, Aisling.....1997-98	Ford, Molly.....2007-10	Kaestner, Ashby.....2007-10
Atkins, Susanne.....1996-99	Coleman, Kristen.....2012	Formby, Caitlin.....2007-10	Keating, Jordan.....1997-2000
Aubin, Shelby.....2013-16	Comerford, Maria.....1982	Foster, Claire.....2000-02	Keib, Elisabeth.....1979-80, 82
Austin, Terri.....1986	Confer, Elizabeth.....1993-94	Fox, Liza.....1988-91	Keller, Kim.....1988-89
Baer, Kristin.....1997-2000	Connelly, Kathy.....1980	Fox, Sara.....1993-94	Kelly, Ellen.....1980, 82
Ballou, Amy.....1978	Connolly, Rosemary.....1979-80, 82	Franklin, Hannah.....2011-14	Kenton, Adrienne.....1990
Bandos, Kristen.....2013-16	Conway, Cathy.....1978	Freedman, Kelyn.....2011-14	Kirr, Jordy.....2008-11
Barnes, Kelly.....2009-12	Corcoran, Rosie.....2010-13	Frese, Kaitlin.....1998	Koch, Maggie.....2005-07
Barone, Caroline.....1978-79	Coyle, MJ.....2011-14	Fritz, Maisie.....1987-89	Kohn, Elizabeth.....1996
Barry, Lauren.....1993	Cumberpatch, Jody.....2011-14	Fritzel, Guerin.....1978	Kramer, Bonnie.....1979-80
Baschuk, Brittany.....2004-07	Dailey, Sally.....1982-84	Gabb, Cortney.....1988	Kramer, Emma.....2009
Bazyk, Trina.....1987	Dale, Sarah.....1993	Gabrielsen, Erika.....1986-89	Lahey, Sheila.....1984-85
Berkery, Eileen.....1997	Dalton, Alisa.....1979-80, 82	Galgano, Gina.....1983	Larkin, Melissa.....1987
Bernier, Lauryn.....2002-05	Decamera, Nancy.....1991	Gallagher, Sarah.....1996	Laughlin, Ophelia.....1978
Bettenhausen, Maia.....1983-85	Derleth, Nancy.....1978	Gebhardt, Taylor.....2016-pres.	Lawton, Anne.....1983-84
Bevad, Katie.....1995	DeSantis, Marcella.....1982	Gelinas, Amy.....1985	Leahy, Meghan.....2002-03
Biles, Melissa.....2000-03	Desbrow, Alex.....1996	Gianzero, Gina.....1982	Leinding, Kit.....1987
Bisbee, Abby.....2010-13	Devaney, Kerry.....2000	Giles, Jacqueline.....2008-11	Lindsay, Chris.....1995-98
Black, Barb.....2011-14	Devine, Adrienne.....2012-15	Giordano, Sammy.....2012-15	Lobes, Christina.....1991
Bloomer, Megan.....2006-09	Devine, Sue.....1986-87	Gooding, Barbara.....1978	Longstrech, Kim.....1994-97
Blute, Meghan.....1997	Dewing, Carolyn.....1980	Gorman, June.....1980	Lopez, Ashley.....2006-08
Bock, Emily.....2007-10	Dickinson, Gretchen.....1978-79	Graham, Cameron.....1994	Lopusniak, Liz.....1983-86
Bodell, Juliann.....1984	Donnellan, Marty.....1980	Graser, Susan.....1999-2002	Lovett, Colleen.....2014-16
Boehm, Mary Ann.....1983	Donoghue, Tarah.....2001	Gray, Lauren.....2010-13	Lovett, Erin.....2009-13
Boehmcke, Danielle.....1999-2002	Doran, Alice.....1987	Greco, Marcia.....1980	Lozano, Gloria.....2001-04
Bowling, Kassandra.....2013-16	Doty, Beth.....1996-99	Green, Laura.....1983-84	Lynch, MaryJo.....1978
Boyle, Lizann.....1985-88	Dow, Devon.....2007	Green, Michelle.....1988-89	Lynn, Morgan.....1998-99
Boyle, Megan.....1988-91	Doyle, Margo.....1991-94	Habeck, Gussie.....1998-2001	MacNamara, Lili.....1978-79
Bozel, Kelsi.....2010-13	Driscoll, Libby.....1994-97	Hadley, Sarah.....1985	Magovern, Fran.....1980, 82
Bradley, Suzanne.....1980, 82	Drury, Kate.....1988-91	Halsey, Heather.....2001-02	Magovern, Fran.....1983
Brandfuss, Carolyn.....1984-87	Drusano, Caroline.....2015-pres.	Haravi, Sepee.....1989	Makhlin, Genie.....1996
Brannigan, Kathleen.....1991	Drusano, Meredith.....2016	Haus, Margaux.....1999-2001	Malcolm, Abbie.....2000
Breen, Tara.....1987-90	Duca, Stacy.....1994-97	Hayes, Maggie.....2001-02	Manus, Sandi.....1988-89
Breschi, Cecelia.....1985	Duffy, Erin.....1997	Heagerty, Annie.....2013-16	Marabella, Jessica.....2001
Brophy, Mary Beth.....2008-11	Duffy, Kate.....1991	Healy, Tricia.....1991	Marinelli, Megan.....2012-15
Brown, Maggie.....2011-14	Dunn, Kathryn.....2015-pres.	Heeg, Mary Allys.....1983-84	Marsted, Amanda.....1989
Bulgier, Natalie.....2016	Dwyer, Bridget.....1999-2000	Heldring, Claudia.....1984	Mascia, Kristen.....2002-03
Burke, Lisa.....1990-91	Dwyer, Kathleen.....2008-11	Herrera, Karla.....2005-07	Massimo, Megan.....2016-pres.
Burns, MariLouise.....1978	Dwyer, Nora.....2001	Heuisler, Karen.....1988	Matheis, Mariah.....2016-pres.
Burton, Kate.....2006-09	Early, Molly.....2011-12	Heuisler, Karen.....1985-86, 88	Mattis, Kristine.....1990-91
Butler, Karen.....1991-93	Edmund, Genevieve.....1990-91	Hilbush, Melanie.....2007-09	Mattson, Lauren.....1990-91
Butler, Kate.....1993-94	Edmund, Mari.....1995-96	Hilsky, Lauren.....1995-98	McBride, Keri.....2000-01
Butler, Maureen.....1978-80	Elbe, Catherine.....2002-05	Holden, Bowen.....1999-2001	McCabe, Christina.....1998
Byank, Karen.....1993	Elbe, Erin.....1999-2002	Holland, Betsy.....2012-15	McCraw, Logan.....2008-11
Cajulis, Michelle.....1991, 94	Ellers, Melissa.....2001-04	Horturi, Machito.....1980	McDonald, Megan.....2013-16
Cannon, Mary.....2009-11	Elliott, Heather.....1993	Howard, Liz.....1994-97	McDonough, Lorraine.....1980
Caputo, Katie.....2008-10	Ellis, Margot.....2006-09	Howe, Maria.....2015	McGowan, Casey.....2012-15
Caputo, Courtney.....2011-14	Ellis, Megan.....2004-07	Howenstein, Brooke.....1984	McGraw, Libby.....2015-pres.
Caputo, Mollie.....2012-15	Etchison, Corinne.....2013-pres.	Hubschman, Allie.....2008-09	McKenna, Abby.....1985
Carega, Alessia.....1996	Farina, Laura.....1982-83	Hubschman, Courtney.....2006-07	McKenzie, Anna.....2006
Carmody, Laura.....1982	Farland, Margaret.....2004-07	Hudson, Wendy.....1994-97	McKeon, Patricia.....1993-95
Carpenter, Katherine.....1982	Farrell, Meghan.....2011-14	Huggins, Gail.....1987-90	McLean, Caitlin.....1998-2001
Cartmell, Barbara.....1983-85	Feil, Bethany.....2000-03	Hughes, Erin.....1989	McMenamin, Melanie.....1994

ALL-TIME ROSTER

Meagher, Becky.....	1982-83	Rodgers, Sue.....	1984-85	Walls, Jessica.....	1998-2001	Ziomek, Stephanie.....	1996
Meagher, Moira.....	1988	Rogers, Ali.....	2004-07	Watson, Ann.....	1979-80	Zodtner, Stephanie.....	2003-06
Mech, Rachel.....	2004-07	Romm, Robin.....	1979-80	Way, Julia.....	1994-95	Zorzi, Sara.....	2004-06
Meek, Leslie.....	1984	Ross, Bridget.....	1996-97	Weickel, Tracy.....	2000-03		
Mele, Suzanne.....	1980	Ross, Megan.....	1986, 88	Weitzen, Ide.....	1982	bold indicates current student-	
Merlo, MaryEsther.....	1978-80	Rotatori, Kathleen.....	1982	Wenzell, Meg.....	1982	athlete	
Middleton, Kristi.....	1989-92	Rubin, Morgan.....	2016	Wesselink, Amelia.....	2005-08		
Milberg, Amy.....	1994	Ryan, Elizabeth.....	2000-03	West, Reilly.....	1999-2000		
Miller, Natalie.....	2013-16	Ryan, Morgan.....2016-pres.		Whitehurst, Francesca...2016-pres.			
Moffit, Margaret.....	1978	Ryan, Rachel.....	1990-91	Wilczewski, Barbara.....	1978		
Moglia, Maresa.....	1979	Saligman, Laury.....	1987	Wilton, Lorie.....	1978		
Morley, Zan.....	2005-08	Samperton, Shelby.....	2001	Wisneski, Jennifer.....	1994-95		
Mulder, Jean.....	1980	Schwalje, Jenny.....2014-pres.		Wittelsberger, Mary.....	2008-11		
Murphy, Jenny.....	1979-80	Schwalje, Lauren.....	2012-15	Wolock, Jenny.....	2008-09		
Murphy, Sheila.....	1979	Schwarz, Alicia.....	1985-86	Woodman, Reilly.....	2011-pres		
Murray, Martha.....	1982-83	Seacor, Jessica.....	1986-87	Woods, Janet.....	1978		
Napora, Carly.....	2009-12	Seats, Caroline.....	2012	Woomer, Anne.....	1988		
Nau, Melissa.....	1993	Seats, Sarah.....	2007-10	Yashar, Susan.....	1978-79		
Nehlsen, HeideMarie.....	1978-79	Seibel, Hannah.....2015-pres.		Yochum, Cindy.....	1980		
Noon, Bridget.....	2006-09	Shanley, Megan.....	1991	Zinn, Josephine.....2016-pres.			
Noyer, Elizabeth.....	1980	Sheehan, Blake.....	2007-10				
Nugent, Kathleen.....	1997-98	Shettle, Caroline.....	2007-08				
O'Brien, Katie.....	2009-11	Sibert, Barby.....	1980				
O'Brien, Maureen.....	1978	Smith, Amy.....	1991				
O'Brien, Sarah.....	1987-90	Smith, Gery.....	1980				
O'Neill, Allison.....	1992-95	Smith, Kristin.....	2003-06				
O'Neill, Helene.....	1980	Snouffer, Kate.....2014-pres.					
O'Neill, Carrie.....	1982	Soled, Sharon.....	1978-79				
O'Neill, Evan.....	2010-13	Sotell, Caitlin.....	2005				
O'Neill, Fay.....	1992-94	Staines, Carrie.....	2000				
O'Reilly, Bunny.....	2006-10	Stanwick, Coco.....	2004-07				
Oglesby, Sarah.....	1998-2001	Stanwick, Sheehan.....	1998-2001				
Oliphant, Sarah.....	2002-05	Stanwick, Wick.....	2000-03				
Oliver, Mary Ellen.....	1996-99	Stewart, Susan.....	1997-2000				
Olson, Lynne.....	1979	Stockdale, Mary.....	1978				
Pallitto, Candace.....2014-pres.		Stright, Doshia.....	2003				
Parsons, Martha.....	1989-92	Supple, Brenna.....	1999				
Passano, Tammy.....	1998-99	Sutton, Schuyler.....	2004-07				
Patterson, Dana.....	1985-88	Swift, Charlotte.....	1978-80				
Perselay, Kelsey.....	2013-16	Tarzian, Caroline.....	2012-15				
Peterman, Kara.....	1990-93	Tate, Laura.....	1979				
Peters, Anouk.....	2001-04	Theurkauf, Anne.....	1984				
Peters, Peggy.....	1979	Thomas, Lauren.....	2008-11				
Petzold, Tricia.....	1988-89	Thomas, Sophia.....	2010-13				
Piazza, Chris.....	1979	Tippett, Holly.....	1983-84				
Pica, Hollis.....	2002-05	Tomeo, Barbara.....	1994-96				
Piotrowicz, Patty.....	2005-08	Tostanoski, Nancy.....	1985-86				
Plavoukas, Stacy.....	1985-86	Trautman, Jordan.....	2006-09				
Polk-Williams, Hilary.....	2000-03	Trautman, Maggie.....	2008				
Poole, Ginny.....	1982, 84	Tromble, Katy.....	1991				
Poole, Lucy.....	2003-06	Tsai, Chieh-Huei.....	1986				
Proch, Jacqueline.....	2007-10	Tunney, Georgia.....2015-pres.					
Quigley, Kris.....	1980	Tuthill, Catherine.....	1992-95				
Rafferty, Kelli.....	1993	Twist, Mallory.....	2007-09				
Ramarui, Cory.....	1979	Uebler, Julie.....	1987-90				
Raneri, Kristin.....	1999-2002	Uhrich, Maggie.....	1980				
Raneri, Reagan.....	1998-99, 2001	Urick, Holly.....	1995-98				
Rausa, Rachel.....2015-pres.		Urick, Mindy.....	1999				
Redden, Suzanne.....	1985-87	Valenti, Nicole.....	1996				
Redler, Lauren.....	2002-05	Valentine, Deirdre.....	1995				
Rice, Anne.....	1986-87, 89	Van Dervort, Michelle.....	1987-88				
Richardson, Meg.....	1997-98	Van Fossan, Danielle.....	2009-11				
Rivet, Virginia.....	1978	Verity, Noelle.....	1988-91				
Robinson, Sarah.....	2002-05	Vicchio, Chandler.....	1999-2002				



MARIAH MATHEIS

YEAR-BY-YEAR RESULTS

1977 (1-5)

COACH: PAT BECKER

3/25 Loyola (Md.)..... L, 12-2
 3/29 Maryland..... L, 23-0
 3/31 at Goucher..... L, N/A
 4/5 Villanova..... L, N/A
 4/13 at Catonsville CC..... W, 5-4
 4/15 at John Hopkins..... L, 9-4

1978 (3-6)

COACH: PAT BECKER

3/29 at Maryland..... L, 11-3
 4/1 Salisbury State..... L, 21-2
 4/4 at Hood College..... W, 7-3
 4/7 Essex CC..... L, 10-6
 4/10 Goucher..... W, 10-6
 4/13 at Loyola (Md.)..... L, 14-2
 4/19 UMBC..... L, 9-6
 4/23 at St. Mary's..... W, 5-4
 4/28 Catonsville CC..... L, 12-4

1979 (1-7)

COACH: JILL ROODY

3/29 Loyola (Md.)..... L, 20-0
 4/4 at Mary Washington..... L, N/A
 4/6 Hood College..... L, 6-4
 4/9 at Essex CC..... L, N/A
 4/11 at UMBC..... L, N/A
 4/17 Johns Hopkins..... L, 13-1
 4/25 Wilson..... W, forfeit
 4/27 Goucher..... L, N/A

1980 (3-4-1)

COACH: CINDY WILHELMI

3/29 UMBC..... L, 13-5
 4/1 Mary Washington..... L, 15-12
 4/10 Essex CC..... L, 15-10
 4/12 Wilson..... W, 24-2
 4/18 at St. Mary's..... W, 10-6
 4/20 at Frostburg State..... L, 14-9
 4/23 Goucher..... W, 11-9
 4/25 at Hood College..... T, 9-9

1981 (1-5-1)

COACH: CINDY WILHELMI

3/28 at UMBC..... L, 12-1
 4/2 at Loyola (Md.)..... L, 20-0
 4/4 at Johns Hopkins..... L, 12-2
 4/12 Notre Dame College..... L, 6-3
 4/22 at Goucher..... W, 10-4
 4/25 Hood College..... T, 10-10
 4/28 Frostburg State..... L, 12-2

1982 (1-8)

COACH: MEG GALLIGAN

3/25 Essex CC..... L, 16-3
 3/30 at Wahington College..... L, 9-7
 4/14 at Mary Washington..... L, 13-3
 4/17 UMBC..... L, 20-8

4/20 at Frostburg State..... L, 21-5
 4/21 Goucher..... L, 14-9
 4/24 St. Mary's..... W, 21-15
 Notre Dame College..... L, 12-7
 at Hood College..... L, 12-6

1983 (3-4)

COACH: MEG GALLIGAN

3/22 at Notre Dame College..... L, 7-4
 4/12 Mary Washington..... L, 10-6
 4/14 Frostburg State..... L, 13-9
 4/16 at UMBC..... L, 13-2
 4/19 Washington College..... W, 11-9
 4/21 at Goucher..... W, 8-3
 4/25 at Essex CC..... W, 9-3

1984 (5-4)

COACH: SANDIE INGLIS

3/25 Notre Dame College..... L, 5-3
 3/29 Essex CC..... W, 11-5
 3/31 UMBC..... L, 6-3
 4/2 at Mary Washington..... L, 15-4
 4/11 Mount St. Mary's..... W, 17-4
 4/14 Goucher..... W, 9-8
 4/16 at Frostburg State..... L, 10-8
 4/18 Hood College..... W, 20-7
 4/25 at St. Mary's..... W, 13-8

1985 (7-1-1)

COACH: SANDIE INGLIS

3/20 Mount St. Mary's..... W, 14-5
 3/26 Mary Washington..... W, 15-8
 4/3 at UMBC..... L, 12-4
 4/9 at Goucher..... W, 13-8
 4/16 at Hood College..... W, 17-3
 4/18 Frostburg State..... W, 14-7
 4/20 at Essex CC..... T, 9-9
 4/22 Notre Dame College..... W, 17-11
 4/25 St. Mary's..... W, 17-4

1986 (7-3)

COACH: SANDIE INGLIS

3/20 Mount St. Mary's..... W, 18-5
 3/26 at Mary Washington..... W, 14-7
 4/2 at Richmond..... L, 18-8
 4/4 Goucher..... W, 18-6
 4/7 UMBC..... L, 14-13
 4/9 Notre Dame College..... W, 18-8
 4/14 Hood College..... W, 16-2
 4/21 Salisbury State..... W, 14-11
 4/23 St. Mary's..... W, 20-4
 4/27 vs. W. Maryland*..... L, 14-12
 *at MCWLA Tournament

1987 (4-7)

COACH: SANDIE INGLIS

3/21 at Lehigh..... L, 10-5
 3/22 at Bucknell..... L, 7-6
 3/31 Richmond..... L, 10-8

4/4 Notre Dame College..... W, 18-4
 4/7 at UMBC..... L, 10-9
 4/10 Towson..... L, 12-11
 4/12 at Longwood..... W, 10-3
 4/15 Drexel..... W, 13-6
 4/21 at Salisbury State..... L, 12-11
 4/23 St. Mary's..... W, 20-4
 4/26 vs. W. Maryland*..... L, 15-2
 *at MCWLA Tournament

1988 (6-5)

COACH: SANDIE INGLIS

3/19 Bucknell..... W, 9-7
 3/24 at Goucher..... W, 13-4
 3/27 Longwood..... W, 12-3
 3/29 at Richmond..... L, 15-1
 4/6 UMBC..... L, 10-7
 4/14 at Towson..... L, 6-5
 4/16 at Drexel..... L, 13-9
 4/19 Salisbury State..... W, 12-6
 4/22 at Mount St. Mary's..... W, 8-6
 4/26 Johns Hopkins..... L, 9-7
 5/1 vs. Frostburg State*..... W, 6-4
 *at MCWLA Tournament

1989 (4-9)

COACH: YVONNE LANDIS

3/18 at Bucknell..... L, 9-4
 3/20 Slippery Rock..... L, 8-5
 3/22 Mount Vernon College..... W, 15-2
 3/28 Richmond..... L, 9-4
 3/30 at Longwood..... W, 12-5
 4/1 Drexel..... L, 12-7
 4/4 at UMBC..... L, 7-5
 4/8 at Villanova..... L, 7-4
 4/10 Northwestern..... L, 12-1
 4/13 Towson..... L, 10-1
 4/18 at Salisbury State..... W, 9-6
 4/25 at Johns Hopkins..... L, 10-5
 4/27 St. Mary's..... W, 15-3
 4/28 at Anne Arundel*..... W, 6-3
 4/28 vs. Essex CC*..... W, 7-5
 4/29 vs. Goucher*..... W, 10-4
 4/29 vs. Notre Dame*..... W, 10-4
 4/30 vs. Salisbury State*..... L, 7-5
 4/20 vs. Frostburg State*..... W, 4-3
 *at MCWLA Tournament

1990 (7-6)

COACH: YVONNE LANDIS

3/13 at Old Dominion..... L, 8-4
 3/17 Bucknell..... W, 7-2
 3/19 Slippery Rock..... W, 12-4
 3/22 at St. Mary's..... W, 16-4
 3/27 at Richmond..... L, 8-5
 3/31 Frostburg State..... W, 13-3

4/4 UMBC..... L, 4-13
 4/13 at Drexel..... L, 7-3
 4/18 at Salisbury State..... L, 9-7
 4/20 Longwood..... W, 17-9
 4/21 Randolph-Macon..... W, 20-2
 4/24 Johns Hopkins..... W, 18-8
 4/26 at Towson..... L, 13-1
 5/6 vs. Frostburg State*..... W, 7-6
 5/6 vs. Salisbury State*..... W, 14-11
 !

*at MCWLA Tournament
 ! non-regulation game, results do not count toward overall standings

1991 (3-13)

COACH: YVONNE LANDIS

3/12 at Frostburg State..... L, 8-7 (ot)
 3/17 Colgate..... L, 8-5
 3/18 Slippery Rock..... W, 17-7
 3/21 Dartmouth..... L, 15-5
 3/21 at Rutgers..... W, 8-7
 3/27 at Lehigh..... L, 11-6
 4/3 at UMBC..... L, 13-8
 4/5 Richmond..... L, 6-4
 4/7 Villanova..... L, 12-8
 4/10 at Bucknell..... L, 8-7
 4/15 at Shippensburg..... L, 14-13
 4/18 vs. Salisbury State..... W, 21-7
 4/20 at James Madison..... L, 17-9
 4/23 Drexel..... L, 14-7
 4/25 Towson..... L, 10-4
 4/27 vs. Essex CC*..... W, 6-4
 4/27 vs. Goucher*..... W, 16-11
 4/28 vs. Hartford*..... W, 15-3
 4/27 vs. Salisbury State*..... W, 9-5
 4/28 vs. Frostburg State*..... L, 7-6
 *at MCWLA Tournament

! non-regulation game, results do not count toward overall standings

1992 (3-11)

COACH: YVONNE LANDIS

3/17 Lehigh..... L, 14-3
 3/19 Colgate..... L, 11-8
 3/21 Rutgers..... L, 10-4
 3/23 UMBC..... W, 8-7
 3/25 at American..... W, 5-4
 4/1 UMBC..... L, 15-7
 4/4 at Villanova..... L, 16-7
 4/7 at Salisbury State..... L, 9-8
 4/9 at Richmond..... L, 15-6
 4/11 James Madison..... L, 15-4
 4/12 Shippensburg..... W, 10-7
 4/16 at Drexel..... L, 20-8
 4/23 Bucknell..... L, 11-7
 4/30 Towson..... L, 19-3

YEAR-BY-YEAR RESULTS

1993 (5-8)

COACH: ALISON WILLIAMS

3/21 Colgate.....	L, 10-5
3/26 American.....	W, 9-3
3/28 Villanova.....	W, 11-3
3/31 at UMBC.....	L, 16-9
4/3 at St. Joseph's (Pa.).....	W, 21-5
4/4 at Lehigh.....	L, 13-7
4/8 Richmond.....	L, 14-11
4/10 at Rutgers.....	W, 12-11
4/15 Drexel.....	L, 17-7
4/17 at Bucknell.....	L, 10-7
4/19 at Shippensburg L, 15-14 (ot)	
4/24 Salisbury State.....	W, 15-5
4/29 Towson.....	L, 15-4

1994 (11-3)

COACH: ALISON WILLIAMS

3/16 George Mason.....	W, 13-1
3/19 Colgate.....	W, 10-9 (ot)
3/20 Lehigh.....	W, 5-4
3/26 at American.....	W, 13-2
3/27 at Villanova.....	L, 10-9
3/31 UMBC.....	L, 13-7
4/5 St. Joseph's (Pa.).....	W, 19-9
4/9 Rutgers.....	W, 21-14
4/12 Shippensburg.....	W, 18-8
4/14 at Drexel.....	W, 12-8
4/17 Bucknell.....	W, 18-2
4/20 at Richmond.....	L, 17-14
4/26 Temple.....	W, 9-7
4/28 at Towson.....	W, 14-11

1995 (11-6)

COACH: ALISON WILLIAMS

3/11 Drexel.....	W, 19-6
3/14 Colgate.....	W, 14-10
3/19 at Lehigh.....	W, 15-10
3/21 at George Mason.....	W, 15-7
3/26 Maryland.....	L, 17-7
3/30 UMBC.....	L, 8-7
4/2 at Bucknell.....	W, 16-5
4/4 Villanova.....	W, 11-12
4/8 at Rutgers.....	L, 13-17
4/11 at Virginia.....	L, 7-4
4/17 Richmond.....	W, 10-7
4/20 at St. Joseph's (Pa.).....	W, 19-1
4/22 Towson.....	W, 14-5
4/25 at Temple.....	L, 14-5
4/27 James Madison.....	W, 7-6
5/6 vs. Lehigh §.....	W, 8-5
5/7 vs. Yale §.....	L, 10-7
§ ECAC Tournament at Yale Bowl	

1996 (12-3)

COACH: KIM SIMONS

3/8 Vanderbilt.....	W, 15-8
3/10 Virginia.....	L, 9-3
3/12 at Drexel.....	W, 16-7

3/17 William & Mary.....	W, 8-5
3/23 at Maryland.....	L, 17-1
3/27 at Richmond.....	W, 15-3
4/2 George Mason.....	W, 14-5
4/10 North Carolina.....	W, 10-7
4/13 at Villanova.....	W, 13-5
4/17 at Towson.....	W, 11-6
4/20 Rutgers.....	W, 12-6
4/21 Duke.....	W, 18-2
4/25 at James Madison.....	W, 9-6
4/30 Temple.....	L, 7-6
5/2 UMBC.....	W, 16-3

1997 (9-8)

COACH: KIM SIMONS

3/6 Princeton.....	W, 8-7
3/9 at Virginia.....	L, 14-4
3/12 Richmond.....	L, 8-6
3/15 Duke.....	W, 12-6
3/19 at William & Mary.....	L, 6-3
3/23 vs. Brown ^.....	L, 7-6
3/25 at UMBC.....	W, 17-2
3/29 Villanova.....	W, 11-10
4/2 at George Mason.....	W, 8-4
4/8 Towson.....	W, 14-3
4/12 at North Carolina.....	L, 7-6
4/16 Maryland.....	L, 15-10
4/19 at Rutgers.....	W, 8-5
4/23 James Madison L, 13-11 (ot)	
4/30 at Temple.....	L, 8-5
5/4 vs. Lafayette §.....	W, 10-4
5/5 at Yale §.....	W, 5-4
^ at Maryland	
§ ECAC Tournament at Yale	

1998 (9-7)

COACH: KIM SIMONS

3/7 Vanderbilt.....	W, 15-7
3/11 at Richmond.....	W, 18-5
3/14 Virginia.....	L, 16-8
3/21 at Princeton.....	L, 6-5
3/23 William & Mary.....	W, 12-7
3/28 at Duke.....	L, 11-9
4/1 George Mason.....	W, 22-11
4/3 at Villanova.....	W, 16-3
4/8 UMBC.....	W, 13-5
4/11 North Carolina.....	L, 10-7
4/15 Maryland.....	L, 10-7
4/18 Rutgers.....	W, 13-9
4/22 James Madison.....	W, 12-10
4/25 Towson.....	W, 14-10
4/30 Temple.....	L, 11-8
5/6 at Princeton & L, 12-11 (ot)	
& NCAA Tournament First Round	

1999 (11-6)

COACH: KIM SIMONS

3/6 at Vanderbilt.....	W, 11-8 (ot)
3/8 vs. Penn State ^.....	L, 9-8

3/13 Lehigh.....	W, 19-3
3/17 Syracuse.....	W, 17-9
3/21 at William & Mary.....	W, 6-5 (ot)
3/26 Duke.....	L, 10-9
3/28 Princeton.....	W, 10-4
3/31 Towson.....	W, 13-8
4/3 at Rutgers.....	L, 13-9
4/7 at UMBC.....	W, 14-7
4/10 at North Carolina.....	L, 10-6
4/14 Maryland.....	L, 21-9
4/17 Villanova.....	W, 14-4
4/24 James Madison.....	W, 10-8
4/27 at George Mason.....	W, 12-10
5/5 North Carolina &.....	W, 7-6
5/8 at Maryland %.....	L, 17-6
^ at Vanderbilt	
& NCAA Tournament First Round	
% NCAA Tournament	
Quarterfinals	

2000 (12-5)

COACH: KIM SIMONS

3/5 Vanderbilt.....	W, 15-7
3/8 at Syracuse.....	W, 16-12
3/12 William & Mary.....	W, 12-3
3/15 at Villanova.....	W, 17-0
3/18 at Princeton.....	L, 8-6
3/25 at Duke.....	L, 13-9
3/29 at Towson.....	W, 15-4
4/1 Rutgers.....	W, 16-6
4/5 Notre Dame.....	W, 14-4
4/8 North Carolina.....	W, 13-7
4/13 at Maryland.....	L, 16-6
4/22 at James Madison.....	W, 10-8
4/25 UMBC.....	W, 17-3
4/29 Penn State.....	L, 16-13
5/3 George Mason.....	W, 19-15
5/11 Syracuse &.....	W, 11-10
5/14 at Maryland %.....	L, 7-6 (ot)
& NCAA Tournament First Round	
% NCAA Tournament	
Quarterfinals	

2001 (17-3, 6-0)

COACH: KIM SIMONS

3/1 Towson.....	W, 16-3
3/4 at Vanderbilt.....	W, 10-4
3/7 Virginia Tech.....	W, 21-7
3/14 at William & Mary.....	W, 9-7
3/17 Syracuse.....	W, 18-6
3/24 Duke.....	L, 8-7
3/28 at Boston College.....	W, 18-3
3/31 at Rutgers.....	W, 13-5
4/7 at North Carolina.....	W, 15-9
4/12 Maryland.....	L, 13-9
4/20 Penn State.....	W, 23-11
4/22 at Notre Dame.....	W, 17-7
4/26 at George Mason.....	W, 17-4
4/29 James Madison.....	W, 13-7

5/1 Connecticut.....	W, 19-3
5/5 Princeton.....	W, 15-10
5/10 Hofstra &.....	W, 20-5
5/13 North Carolina %.....	W, 10-4
5/18 Loyola (Md.) #.....	W, 10-9
5/20 Maryland †.....	L, 14-13 (2ot)
& NCAA Tournament First Round	
% NCAA Tournament	
Quarterfinals	
# NCAA Tournament Semifinals	
† NCAA Championship Finals	

2002 (17-2, 6-0)

COACH: KIM SIMONS

3/1 Richmond.....	W, 15-6
3/3 at Princeton.....	W, 15-13
3/8 Vanderbilt.....	W, 19-5
3/10 at Virginia Tech.....	W, 11-9
3/15 at Syracuse.....	W, 11-6
3/24 at Duke.....	W, 8-7
3/30 Rutgers.....	W, 17-9
4/3 at Maryland.....	W, 10-6
4/7 North Carolina.....	L, 11-10
4/11 at James Madison.....	W, 9-8
4/14 Boston College.....	W, 23-10
4/16 William & Mary.....	W, 21-12
4/20 Notre Dame.....	W, 17-8
4/24 at Penn State.....	W, 18-9
4/27 at Connecticut.....	W, 10-4
5/9 Lafayette &.....	W, 20-9
5/12 Duke %.....	W, 11-4
5/17 Cornell #.....	W, 12-10
5/19 Princeton †.....	L, 12-7
& NCAA Tournament First Round	
% NCAA Tournament	
Quarterfinals	
# NCAA Tournament Semifinals	
† NCAA Championship Finals	

2003 (13-4, 6-0)

COACH: KIM SIMONS

2/25 vs. Virginia Tech.....	W, 17-5
3/5 at William & Mary.....	W, 15-13
3/9 at Stanford.....	W, 15-7
3/15 Syracuse.....	W, 13-3
3/19 at Richmond.....	W, 9-3
3/22 Duke.....	L, 14-11
3/28 at Princeton.....	L, 13-11
3/30 at Rutgers.....	W, 6-5
4/2 Maryland.....	L, 13-10
4/6 at North Carolina.....	W, 9-6
4/11 James Madison.....	W, 14-7
4/13 at Boston College.....	W, 11-6
4/19 at Notre Dame.....	W, 16-15
4/23 Penn State.....	W, 19-9
4/27 Connecticut.....	W, 15-9
5/8 James Madison &.....	W, 9-5
5/11 at Virginia %.....	L, 16-9
& NCAA Tournament First Round	

YEAR-BY-YEAR RESULTS

% NCAA Tournament
Quarterfinals

2004 (13-5, 6-0)

COACH: KIM SIMONS

2/28 Cornell.....	W, 16-8
3/7 at Virginia Tech.....	W, 16-7
3/13 at Syracuse.....	W, 10-5
3/17 William & Mary.....	W, 18-3
3/21 at Duke.....	W, 9-8
3/26 Princeton.....	L, 9-7
3/28 Rutgers.....	W, 13-6
4/4 North Carolina.....	W, 14-3
4/7 at Maryland.....	L, 13-9
4/10 Boston College.....	W, 20-3
4/17 Notre Dame.....	W, 9-7
4/21 at Penn State.....	L, 9-7
4/24 at Connecticut.....	W, 14-9
4/27 at James Madison.....	L, 12-11
5/1 Stanford.....	W, 12-3
5/13 at Duke &.....	W, 13-12 (ot)
5/16 at Maryland.....	W, 14-10
5/21 Virginia.....	L, 13-9

& NCAA Tournament First Round
% NCAA Tournament
Quarterfinals
NCAA Tournament Semifinals

2005 (13-5, 5-0)

COACH: RICKY FRIED

3/2 Mount St. Mary's.....	W, 18-3
3/6 at Stanford.....	W, 10-6
3/12 Syracuse.....	W, 13-6
3/16 at William & Mary.....	W, 15-7
3/19 Duke.....	L, 10-7
3/26 at Rutgers.....	W, 15-10
3/30 at Princeton.....	L, 13-12 (2ot)
4/3 at North Carolina.....	W, 21-10
4/6 Maryland.....	W, 8-6
4/9 at Boston College.....	W, 12-8
4/11 at Boston University.....	L, 12-8
4/16 at Notre Dame.....	W, 14-6
4/20 at Virginia.....	W, 13-11
4/23 Connecticut.....	W, 16-8
4/27 James Madison.....	W, 13-8
5/7 Johns Hopkins.....	L, 14-10
5/12 Towson &.....	W, 15-14
5/15 at Dartmouth.....	L, 13-3

& NCAA Tournament First Round
% NCAA Tournament
Quarterfinals

2006 (14-4, 5-0)

COACH: RICKY FRIED

2/26 at Mount St. Mary's.....	W, 15-2
3/5 at Oregon.....	W, 16-6
3/11 at Syracuse.....	W, 10-7
3/15 William & Mary.....	W, 13-3
3/18 at Duke.....	L, 10-8

3/22 Princeton.....	W, 9-7
3/25 Rutgers.....	W, 15-7
3/31 North Carolina.....	W, 8-7 (ot)
4/5 at Maryland.....	W, 11-10 (ot)
4/9 at Boston University.....	L, 9-8
4/15 Notre Dame.....	W, 11-10 (2ot)
4/19 Virginia.....	W, 8-4
4/22 at Connecticut.....	W, 12-8
4/26 at James Madison.....	L, 7-6 (ot)
4/29 Loyola (Md.).....	W, 9-8 (ot)
5/6 at Johns Hopkins.....	W, 8-7
5/16 at Monmouth &.....	W, 18-2
5/20 at Notre Dame.....	L, 12-9

& NCAA Tournament First Round
% NCAA Tournament
Quarterfinals

2007 (10-8, 4-1)

COACH: RICKY FRIED

2/24 James Madison.....	L, 14-10
3/2 Oregon.....	W, 11-6
3/10 Syracuse.....	W, 9-8 (2OT)
3/14 Johns Hopkins.....	W, 16-13
3/18 Duke.....	L, 12-11
3/21 at George Mason.....	W, 12-6
3/24 Rutgers.....	W, 9-3
3/27 at William and Mary.....	W, 13-5
3/30 at North Carolina.....	L, 8-6
4/3 Maryland.....	L, 14-10
4/7 at Loyola (Md.).....	W, 14-3
4/11 at Virginia.....	L, 14-7
4/14 at Notre Dame.....	L, 13-8
4/20 George Washington.....	W, 18-7
4/22 Connecticut.....	W, 15-9
4/27 vs. Notre Dame @.....	W, 12-10
4/29 at Syracuse.....	L, 12-7
5/6 at Princeton.....	L, 12-11

@ BIG EAST Tournament
Semifinals
& BIG EAST Tournament Finals
(Syracuse, N.Y.)

2008 (12-7, 3-2)

COACH: RICKY FRIED

2/20 at George Washington.....	W, 11-10
2/23 Loyola (Md.).....	W, 16-9
2/27 George Mason.....	W, 14-7
3/3 at Denver.....	W, 12-11
3/7 at Johns Hopkins.....	W, 12-10
3/15 at Duke.....	L, 12-11
3/19 William & Mary.....	W, 8-7
3/22 Rutgers.....	W, 11-5
3/28 at Northwestern.....	L, 7-6
3/30 at Louisville.....	W, 13-5
4/5 at Syracuse.....	L, 18-3
4/9 Virginia.....	W, 8-7
4/12 Notre Dame.....	L, 10-8
4/16 at Maryland.....	L, 14-7

4/20 at Connecticut.....	W, 16-7
4/25 at Notre Dame @.....	W, 15-14
4/27 vs. Syracuse +.....	L, 12-6
5/3 Princeton.....	W, 9-8
5/11 Duke &.....	L, 10-8

@ BIG EAST Tournament
Semifinals
& BIG EAST Tournament Finals
(Syracuse, N.Y.)
& NCAA Tournament First Round

2009 (13-6, 6-1)

COACH: RICKY FRIED

2/21 George Washington.....	W, 17-2
2/25 at Johns Hopkins.....	W, 11-6
3/1 Denver.....	W, 12-8
3/7 Northwestern.....	L, 15-4
3/11 Maryland.....	L, 14-12
3/14 Duke.....	W, 12-11
3/18 at George Mason.....	W, 16-10
3/21 at North Carolina.....	L, 12-7
3/27 at Notre Dame.....	W, 14-12
3/29 at Rutgers.....	W, 9-5
4/3 Syracuse.....	W, 11-10 (4ot)
4/5 Connecticut.....	W, 19-8
4/11 at Louisville.....	W, 15-11
4/15 at Loyola (Md.).....	L, 13-11
4/18 Cincinnati.....	W, 18-6
4/24 Louisville @.....	W, 21-12
4/26 Notre Dame +.....	L, 12-10
5/2 Yale.....	W, 12-4
5/10 Princeton &.....	L, 15-9

@ BIG EAST Tournament
Semifinals
& BIG EAST Tournament Finals
& NCAA Tournament First Round

2010 (13-6, 8-0)

COACH: RICKY FRIED

2/24 Johns Hopkins.....	W, 15-9
3/6 at Northwestern.....	L, 15-10
3/9 at Florida.....	W, 13-11
3/13 at Duke.....	L, 10-8
3/17 at Maryland.....	L, 20-11
3/20 North Carolina.....	L, 13-6
3/26 at Villanova.....	W, 20-7
3/28 Princeton.....	L, 15-14 (3ot)
4/3 Notre Dame.....	W, 12-10
4/5 Connecticut.....	W, 18-9
4/9 at Cincinnati.....	W, 21-8
4/11 at Louisville.....	W, 17-13
4/17 Rutgers.....	W, 19-12
4/23 at Yale.....	W, 15-4
4/28 Loyola (Md.).....	W, 13-12 (2ot)
5/1 Syracuse.....	W, 10-9
5/6 Loyola (Md.) @.....	W, 11-9
5/8 Syracuse +.....	W, 13-11
5/15 Syracuse &.....	L, 15-8

@ BIG EAST Tournament

Semifinals
& BIG EAST Tournament Finals
& NCAA Tournament First Round

2011 (9-8, 7-1)

COACH: RICKY FRIED

3/5 Northwestern.....	L, 24-15
3/9 at Florida.....	L, 17-10
3/12 Duke.....	L, 13-5
3/16 at Johns Hopkins.....	W, 12-11
3/19 at North Carolina.....	L, 13-10
3/25 Villanova.....	W, 17-12
3/27 at Princeton.....	L, 12-11
4/1 at Connecticut.....	W, 14-12
4/3 Yale.....	W, 16-3
4/8 Cincinnati.....	W, 17-2
4/10 Louisville.....	W, 19-12
4/16 Syracuse.....	W, 12-8
4/19 at Loyola (Md.).....	W, 15-13
4/23 at Notre Dame.....	L, 13-10
4/28 Maryland.....	L, 8-5
5/1 at Rutgers.....	W, 9-8
5/5 Notre Dame @.....	L, 15-12

@ BIG EAST Tournament
Semifinals

2012 (9-8, 5-3)

COACH: RICKY FRIED

2/29 Delaware.....	W, 16-7
3/3 at Villanova.....	W, 18-6
3/7 Florida.....	L, 12-9
3/10 at Duke.....	L, 14-7
3/14 Johns Hopkins.....	L, 16-12
3/17 North Carolina.....	W, 9-8
3/21 at Penn.....	W, 11-9
3/24 Loyola (Md.).....	L, 15-14 (ot)
3/27 American.....	W, 17-11
3/30 Connecticut.....	W, 21-11
4/5 at Cincinnati.....	W, 17-2
4/7 at Louisville.....	W, 19-11
4/14 at Syracuse.....	L, 12-11
4/21 Notre Dame.....	L, 7-6 (2ot)
4/25 at Maryland.....	L, 19-10
4/28 Rutgers.....	W, 9-7
5/3 at Syracuse @.....	L, 7-6

@ BIG EAST Tournament
Semifinals

2013 (13-6, 6-2)

COACH: RICKY FRIED

2/16 at Delaware.....	W, 16-12
2/23 Towson.....	W, 13-10
3/1 Princeton.....	W, 11-6
3/5 at Stanford.....	W, 15-8
3/9 Duke.....	L, 11-10
3/13 at Johns Hopkins.....	W, 15-8
3/16 at North Carolina.....	L, 17-11
3/22 Cincinnati.....	W, 21-3
3/24 Louisville.....	W, 14-11

YEAR-BY-YEAR RESULTS

4/6 at Loyola.....W, 14-11
 4/12 at Marquette.....W, 13-7
 4/14 at Notre Dame.....L, 13-11
 4/19 at Rutgers.....W, 13-5
 4/21 at Villanova.....W, 6-5
 4/26 Connecticut.....W, 9-6
 4/28 Syracuse.....L, 13-7
 5/2 Loyola @.....W, 16-14
 5/4 Syracuse +.....L, 14-7
 5/12 Virginia &.....L, 10-8
 @ BIG EAST Tournament
 Semifinals
 + BIG EAST Tournament Finals
 & NCAA Tournament First Round

2014 (11-9, 6-1)

COACH: RICKY FRIED

2/15 Delaware.....W, 19-11
 2/22 at Towson.....L, 1-104
 3/1 at Princeton.....W, 17-16 (ot)
 3/5 at Duke.....W, 11-10
 3/9 Stanford.....L, 11-10 (20t)
 3/15 at North Carolina.....L, 18-11
 3/21 Johns Hopkins.....L, 11-10 (ot)
 3/26 Loyola.....L, 8-5
 3/29 Louisville.....L, 14-13
 4/1 vs Penn.....L, 8-6
 4/5 Marquette.....W, 12-5
 4/11 at Connecticut.....W, 11-10
 4/13 at Rutgers.....W, 15-10
 4/17 Villanova.....W, 13-2
 4/19 Temple.....W, 13-6
 4/26 at Cincinnati.....W, 20-5
 5/1 Connecticut @.....W, 16-8
 5/3 vs Louisville +.....L, 9-8
 5/9 vs Johns Hopkins &.....W, 9-8
 (ot)
 5/11 at North Carolina.....L, 10-8
 @ BIG EAST Tournament
 Semifinals
 + BIG EAST Tournament Finals
 & NCAA First Round
 % NCAA Second Round

2015 (7-10, 6-1)

COACH: RICKY FRIED

2/14 at Delaware.....L, 17-5
 2/28 Princeton.....L, 11-7
 3/4 George Mason.....W, 11-9
 3/7 Towson.....L, 13-10
 3/11 Duke.....L, 12-4
 3/14 at Penn.....L, 15-8
 3/21 at Johns Hopkins.....L, 8-6
 3/25 at Loyola (Md.).....L, 12-8
 3/28 Vanderbilt.....W, 10-6
 4/1 Maryland.....L, 12-3
 4/4 at Florida.....L, 18-4
 4/8 at Villanova.....W, 9-5
 4/11 Cincinnati.....W, 8-4

4/15 Connecticut.....W, 13-12
 4/18 at Marquette.....W, 8-7
 4/25 Temple.....W, 13-12
 4/30 Connecticut @.....L, 11-10
 @ BIG EAST Tournament
 Semifinals

2016 (6-11, 4-3)

COACH: RICKY FRIED

2/12 Delaware.....L, 10-6
 2/20 at Maryland.....L, 18-8
 2/27 at Princeton.....L, 10-9
 3/5 at Towson.....L, 8-7
 3/9 at Duke.....W, 10-9
 3/12 Penn.....L, 15-8
 3/16 at George Mason.....W, 15-12
 3/19 Johns Hopkins.....L, 10-4
 3/22 Loyola.....L, 12-9
 4/2 at Vanderbilt.....W, 7-5
 4/9 Florida.....L, 14-7
 4/13 Villanova.....W, 18-7
 4/16 at Cincinnati.....W, 10-5
 4/20 at Connecticut.....L, 9-8
 4/23 Marquette.....W, 13-12
 4/30 at Temple.....L, 11-4
 5/5 Florida @.....L, 11-8
 @BIG EAST Tournament
 Semifinals

ALL-TIME RESULTS BY OPPONENT

AMERICAN (4-0)

3/25/92..... A..... W, 5-4
 3/26/93..... H..... W, 9-3
 3/26/94..... A..... W, 13-2
 3/27/12..... H..... W, 17-11

ANNE ARUNDEL (1-0)

4/28/89..... N*..... W, 6-3
 * MCWLA Tournament
 ! non-regulation game

BOSTON COLLEGE (5-0)

3/28/01..... A..... W, 18-3
 4/14/02..... H..... W, 23-10
 4/13/03..... A..... W, 11-6
 4/10/04..... H..... W, 20-3
 4/9/05..... A..... W, 12-8

BOSTON UNIVERSITY (0-2)

4/11/05..... A..... L, 10-8
 4/9/06..... A..... L, 9-8

BROWN (0-1)

3/23/97..... N^..... L, 7-6
 ^ at Maryland

BUCKNELL (4-5)

3/22/87..... A..... L, 7-6
 3/19/88..... H..... W, 9-7
 3/18/89..... A..... L, 9-4
 3/17/90..... H..... W, 7-2
 4/10/91..... A..... L, 8-7
 4/23/92..... H..... L, 11-7
 4/17/93..... A..... L, 10-7
 4/17/94..... H..... W, 18-2
 4/2/95..... A..... W, 16-5

CATONSVILLE C.C. (1-1)

4/13/77..... A..... W, 5-4
 4/28/78..... H..... L, 12-4

CINCINNATI (8-0)

4/18/09..... H..... W, 18-6
 4/9/10..... A..... W, 21-8
 4/8/11..... H..... W, 17-2
 4/5/12..... A..... W, 22-4
 3/22/13..... H..... W, 23-10
 4/26/14..... A..... W, 20-5
 4/11/15..... H..... W, 8-4
 4/16/16..... A..... W, 10-5

COLGATE (2-3)

3/17/91..... H..... L, 8-5
 3/19/92..... H..... L, 11-8
 3/21/93..... H..... L, 10-5
 3/19/94..... H..... W, 10-9 (ot)
 3/14/95..... H..... W, 14-10

CONNECTICUT (16-2)

5/1/01..... H..... W, 19-3
 4/27/02..... A..... W, 20-4
 4/27/03..... H..... W, 15-9
 4/24/04..... A..... W, 14-9
 4/23/05..... H..... W, 16-8
 4/22/06..... A..... W, 12-8
 4/22/07..... H..... W, 15-9
 4/20/08..... A..... W, 16-7
 4/5/09..... H..... W, 19-8
 4/5/10..... H..... W, 18-9
 4/1/11..... A..... W, 14-12
 3/30/12..... H..... W, 21-11
 4/26/13..... H..... W, 9-6
 4/11/14..... A..... W, 11-10
 5/1/14..... H@..... W, 16-8
 4/15/15..... H..... W, 13-12
 4/30/15..... A@..... L, 11-10
 4/20/16..... A..... L, 9-8

@ BIG EAST Tournament
 Semifinals

CORNELL (2-0)

5/17/02..... N#..... W, 12-10
 2/28/04..... H..... W, 16-8
 # NCAA Tournament Semifinals

DARTMOUTH (0-2)

3/21/91..... H..... L, 15-5
 5/15/05..... A%..... L, 13-3
 % NCAA Tournament
 Quarterfinals

DELAWARE (3-2)

2/29/12..... H..... W, 16-7
 2/16/13..... A..... W, 16-12
 2/15/14..... H..... W, 19-11
 2/14/15..... A..... L, 17-5
 2/12/16..... H..... L, 10-6

DENVER (2-0)

3/3/08..... A..... W, 12-11
 3/1/09..... H..... W, 12-8

DREXEL (4-6)

4/15/87..... H..... W, 13-6
 4/16/88..... A..... L, 13-9
 4/1/89..... H..... L, 12-7
 4/13/90..... A..... L, 7-3
 4/23/91..... H..... L, 14-7
 4/16/92..... A..... L, 20-8
 4/15/93..... H..... L, 17-7
 4/14/94..... A..... W, 12-8
 3/11/95..... H..... W, 19-6
 3/12/96..... A..... W, 16-7

DUKE (9-15)

4/21/96..... H..... W, 18-2
 3/15/97..... H..... W, 12-6
 3/28/98..... A..... L, 11-9
 3/26/99..... H..... L, 10-9
 3/25/00..... A..... L, 13-9
 3/24/01..... H..... L, 8-7
 3/24/02..... A..... W, 8-7
 5/12/02..... H%..... W, 11-4
 3/22/03..... A..... L, 14-11
 3/21/04..... A..... W, 9-8
 5/13/04..... A&..... W, 13-12 (ot)
 3/19/05..... H..... L, 10-7
 3/18/06..... A..... L, 10-8
 3/18/07..... H..... L, 12-11
 3/15/08..... A..... L, 12-11
 5/11/08..... H&..... L, 10-8
 3/14/09..... H..... W, 12-11
 3/13/10..... A..... L, 10-8
 3/12/11..... H..... L, 13-5
 3/10/12..... A..... L, 14-7
 3/9/13..... H..... L, 11-10
 3/5/14..... A..... W, 11-10
 3/11/15..... H..... L, 12-4
 3/9/16..... A..... W, 10-9
 & NCAA Tournament First Round
 % NCAA Tournament
 Quarterfinals

ESSEX C.C. (2-4-1)

4/7/78..... H..... L, 10-6
 4/9/79..... A..... L, N/A
 4/10/80..... H..... L, 15-10
 3/25/82..... H..... L, 16-3
 4/25/83..... A..... W, 9-3
 3/29/84..... H..... W, 11-5
 4/20/85..... A..... T, 9-9
 4/28/89..... * N*..... W, 7-5
 4/27/91..... N*..... W, 6-4
 * MCWLA Tournament
 ! non-regulation game

FLORIDA (1-5)

3/9/10..... A..... W, 13-11
 3/9/11..... A..... L, 17-10
 3/7/12..... H..... L, 12-9
 4/4/15..... A..... L, 18-4
 4/9/16..... H..... L, 14-7
 5/5/16..... H@..... L, 11-8
 @ BIG EAST Tournament
 Semifinals

FROSTBURG STATE (3-7)

4/20/80..... A..... L, 14-9
 4/28/81..... H..... L, 12-2
 4/20/82..... A..... L, 21-5
 4/14/83..... H..... L, 13-9
 4/16/84..... A..... L, 10-8
 4/18/85..... H..... W, 14-7

5/1/88..... N*..... W, 6-4
 4/20/89..... N*!..... W, 4-3
 3/31/90..... H..... W, 13-3
 5/6/90..... N*!..... W, 7-6
 3/12/91..... A..... L, 8-7 (ot)
 4/28/91..... N*..... L, 7-6
 * MCWLA Tournament
 ! non-regulation game

GEORGE MASON (13-0)

3/16/94..... H..... W, 13-1
 3/21/95..... A..... W, 15-7
 4/2/96..... H..... W, 14-5
 4/2/97..... A..... W, 8-4
 4/1/98..... H..... W, 22-11
 4/27/99..... A..... W, 12-10
 5/3/00..... H..... W, 19-15
 4/26/01..... A..... W, 17-4
 3/21/07..... H..... W, 12-6
 5/2/08..... A..... W, 14-7
 3/18/09..... A..... W, 16-10
 3/4/15..... H..... W, 11-9
 3/16/16..... A..... W, 15-12

GEORGE WASHINGTON (3-0)

4/20/07..... H..... W, 18-7
 2/20/08..... A..... W, 11-10
 2/21/09..... H..... W, 17-2

GOUCHER (8-3)

3/31/77..... A..... L, N/A
 4/10/78..... H..... W, 10-6
 4/27/79..... H..... L, N/A
 4/23/80..... H..... W, 11-9
 4/22/81..... A..... W, 10-4
 4/21/82..... H..... L, 14-9
 4/21/83..... A..... W, 8-3
 4/14/84..... H..... W, 9-8
 4/9/85..... A..... W, 13-8
 4/4/86..... H..... W, 18-6
 3/24/88..... A..... W, 13-4
 4/29/89..... N*!..... W, 10-4
 4/27/91..... N*!..... W, 16-1
 * MCWLA Tournament
 ! non-regulation game

Hartford (0-0)
 4/27/91..... N*!..... W, 15-3
 * MCWLA Tournament
 ! non-regulation game

HOFSTRA (1-0)

5/10/01..... H&..... W, 20-5
 & NCAA Tournament First Round

HOOD COLLEGE (4-2-2)

4/4/78..... A..... W, 7-3
 4/6/79..... H..... L, 6-4
 4/25/80..... A..... T, 9-9
 4/25/81..... H..... T, 10-10

ALL-TIME RESULTS BY OPPONENT

1982..... A..... L, 12-6
 4/18/84..... H..... W, 20-7
 4/16/85..... A..... W, 17-3
 4/14/86..... H..... W, 16-2

JAMES MADISON (10-6)

4/20/91..... A..... L, 17-9
 4/11/92..... H..... L, 15-4
 4/27/95..... H..... W, 7-6
 4/25/96..... A..... W, 9-6
 4/23/97..... H..... L, 13-11 (0t)
 4/22/98..... H..... W, 12-10
 4/24/99..... H..... W, 10-8
 4/22/00..... A..... W, 10-8
 4/29/01..... H..... W, 13-7
 4/13/02..... A..... W, 9-8
 4/11/03..... H..... W, 14-7
 5/8/03..... H&..... W, 9-5
 4/27/04..... A..... L, 12-11
 4/27/05..... H..... W, 13-8
 4/26/06..... A..... L, 7-6 (0t)
 2/24/07..... H..... L, 14-10
 & NCAA Tournament First Round

JOHNS HOPKINS (9-10)

4/15/77..... A..... L, 9-4
 4/17/79..... H..... L, 13-1
 4/4/81..... A..... L, 12-2
 4/26/88..... H..... L, 9-7
 4/25/89..... A..... L, 10-5
 4/24/90..... H..... W, 18-8
 5/7/05..... H..... L, 14-10
 5/6/06..... A..... W, 8-7
 3/14/07..... H..... W, 16-13
 3/7/08..... A..... W, 12-10
 2/25/09..... A..... W, 11-6
 2/24/10..... H..... W, 15-9
 3/16/11..... A..... W, 12-11
 3/14/12..... H..... L, 16-12
 3/13/13..... A..... W, 15-8
 3/21/14..... H..... 11-10 (0t)
 5/9/14..... N&..... W, 9-8 (0t)
 3/21/15..... A..... L, 8-6
 3/19/16..... H..... L, 10-4
 & NCAA Tournament First Round

LAFAYETTE (2-0)

5/4/97..... N§..... W, 10-4
 5/9/02..... H&..... W, 20-9
 § ECAC Tournament at Yale
 & NCAA Tournament First Round

LEHIGH (4-4)

3/21/87..... A..... L, 10-5
 3/27/91..... A..... L, 11-6
 3/17/92..... H..... L, 14-3
 4/4/93..... A..... L, 13-7
 3/20/94..... H..... W, 5-4
 3/19/95..... A..... W, 15-10

5/6/95..... N§..... W, 8-5
 3/13/99..... H..... W, 19-3
 § ECAC Tournament at Yale

LONGWOOD (4-0)

4/12/87..... A..... W, 10-3
 3/27/88..... H..... W, 12-3
 3/30/89..... A..... W, 12-5
 4/20/90..... H..... W, 17-9

LOUISVILLE (7-2)

3/30/08..... A..... W, 13-5
 4/11/09..... A..... W, 15-11
 4/24/09..... H@..... W, 21-12
 4/11/10..... A..... W, 17-13
 4/10/11..... H..... W, 19-12
 4/7/12..... A..... W, 19-11
 3/24/13..... H..... W, 14-11
 3/29/14..... H..... L, 14-13
 5/3/14..... H+..... L, 9-8
 @ BIG EAST Tournament
 Semifinals
 + BIG EAST Tournament Finals

LOYOLA (MD.) (9-9)

3/25/77..... H..... L, 12-2
 4/13/78..... A..... L, 14-2
 3/29/79..... H..... L, 20-0
 4/2/81..... A..... L, 20-0
 5/18/01..... N#..... W, 10-9
 4/29/06..... H..... W, 9-8 (0t)
 4/7/07..... A..... W, 14-3
 2/23/08..... H..... W, 16-9
 4/15/09..... A..... L, 13-11
 4/28/10..... H..... W, 13-12 (20t)
 5/6/10..... N@..... W, 11-9
 4/19/11..... A..... W, 15-13
 3/24/12..... H..... L, 15-14 (0t)
 4/6/13..... H..... W, 14-11
 5/2/13..... H@..... W, 16-14
 3/26/14..... H..... L, 8-5
 3/25/15..... A..... L, 12-8
 3/22/16..... H..... L, 12-9
 @ BIG EAST Tournament
 Semifinals
 # NCAA Tournament Semifinals

MARQUETTE (4-0)

4/12/13..... A..... W, 13-7
 4/5/14..... H..... W, 12-5
 4/18/15..... A..... W, 8-7
 4/23/16..... H..... W, 13-12

MARY WASHINGTON (2-5)

4/4/79..... A..... L, N/A
 4/1/80..... H..... L, 15-12
 4/14/82..... A..... L, 13-3
 4/12/83..... H..... L, 10-6
 4/2/84..... A..... L, 15-4

3/26/85..... H..... W, 15-8
 3/26/86..... A..... W, 14-7

MARYLAND (4-22)

3/29/77..... H..... L, 23-0
 3/29/78..... A..... L, 11-3
 3/26/95..... H..... L, 17-7
 3/23/96..... A..... L, 17-1
 4/16/97..... H..... L, 15-10
 4/15/98..... H..... L, 10-7
 4/14/99..... H..... L, 21-9
 5/8/99..... A&..... L, 17-6
 4/13/00..... A..... L, 16-6
 5/14/00..... A!..... L, 7-6 (0t)
 4/12/01..... H..... L, 13-9
 5/20/01..... N+..... L, 14-13 (20t)
 4/3/02..... A..... W, 10-6
 4/2/03..... H..... L, 13-10
 4/7/04..... A..... L, 13-8
 5/16/04..... A%..... W, 14-10
 4/6/05..... H..... W, 8-6
 4/5/06..... A..... W, 11-10 (0t)
 4/3/07..... H..... L, 14-10
 4/16/08..... A..... L, 14-7
 3/11/09..... H..... L, 14-12
 3/17/10..... A..... L, 20-11
 4/28/11..... H..... L, 8-5
 4/25/12..... A..... L, 19-10
 4/1/15..... H..... L, 12-3
 2/20/16..... A..... L, 18-8
 & NCAA Tournament First Round
 % NCAA Tournament
 Quarterfinals
 † NCAA Tournament Finals

MONMOUTH (1-0)

5/20/06..... A&..... W, 18-2
 & NCAA Tournament First Round

MOUNT ST. MARY'S (6-0)

4/11/84..... H..... W, 17-4
 3/20/85..... H..... W, 14-5
 3/20/86..... H..... W, 18-5
 4/22/88..... A..... W, 8-6
 3/2/05..... H..... W, 18-3
 2/26/06..... A..... W, 15-2

MOUNT VERNON COLLEGE (1-0)

3/22/89..... H..... W, 15-2

NORTH CAROLINA (10-11)

4/10/96..... H..... W, 10-7
 4/12/97..... A..... L, 7-6
 4/11/98..... H..... L, 10-7
 4/10/99..... A..... L, 10-6
 5/5/99..... H&..... W, 7-6
 4/8/00..... H..... W, 13-7
 4/7/01..... A..... W, 15-9

5/13/01..... H%..... W, 10-4
 4/7/02..... H..... L, 11-10
 4/6/03..... A..... W, 9-6
 4/4/04..... H..... W, 14-3
 4/3/05..... A..... W, 11-10
 3/31/06..... H..... W, 8-7 (0t)
 3/30/07..... A..... L, 8-6
 3/21/09..... A..... L, 12-7
 3/20/10..... H..... L, 13-6
 3/19/11..... A..... L, 13-10
 3/17/12..... H..... W, 9-8
 3/16/13..... A..... L, 17-11
 3/15/14..... A..... L, 18-11
 5/11/14..... A+..... L, 10-8
 & NCAA Tournament First Round
 % NCAA Tournament
 Quarterfinals
 + NCAA Tournament Second Round

NORTHWESTERN (0-5)

4/10/89..... H..... L, 12-1
 3/28/08..... A..... L, 7-6
 3/7/09..... H..... L, 15-4
 3/6/10..... A..... L, 15-10
 3/5/11..... H..... L, 24-15

NOTRE DAME COLLEGE (4-4)

4/12/81..... H..... L, 6-3
 1982..... H..... L, 12-7
 3/22/83..... A..... L, 7-4
 3/25/84..... H..... W, 5-3
 4/22/85..... H..... W, 17-11
 4/9/86..... H..... W, 18-8
 4/4/87..... H..... W, 18-4
 4/29/89..... N*!..... W, 10-4
 * MCWLU Tournament
 ! non-regulation game

NOTRE DAME (11-8)

4/5/00..... H..... W, 14-4
 4/22/01..... A..... W, 17-7
 4/20/02..... H..... W, 17-8
 4/19/03..... A..... W, 16-15 (0t)
 4/17/04..... H..... W, 9-7
 4/16/05..... A..... W, 14-6
 4/15/06..... H..... W, 11-10 (24t)
 5/20/06..... H%..... L, 12-9
 4/14/07..... A..... L, 13-8
 4/27/07..... N@..... W, 12-10
 4/12/08..... H..... L, 10-8
 4/25/08..... A@..... W, 15-14
 3/27/09..... A..... W, 14-12
 4/26/09..... H+..... L, 12-10
 4/3/10..... H..... W, 12-10
 4/23/11..... A..... L, 13-10
 5/5/11..... N@..... L, 15-12
 4/21/12..... H..... L, 7-6 (20t)
 4/14/13..... A..... L, 13-12

ALL-TIME RESULTS BY OPPONENT

@ BIG EAST Tournament Semifinals
 + BIG EAST Tournament Finals
 % NCAA Tournament Quarterfinals

OLD DOMINION (0-1)

3/13/90..... A..... L, 8-4

OREGON (2-0)

3/5/06..... A..... W, 16-6
 3/2/07..... H..... W, 11-8

PENN (1-3)

3/21/12..... A..... W, 11-9
 4/1/14..... N..... L, 8-6
 3/14/15..... A..... L, 15-8
 3/12/16..... H..... L, 15-8

PENN STATE (3-3)

3/8/99..... N[^]..... L, 9-8
 4/29/00..... A..... L, 16-13
 4/20/01..... H..... W, 23-11
 4/24/02..... A..... W, 18-9
 4/23/03..... H..... W, 19-9
 4/21/04..... A..... L, 9-7
 ^ at Vanderbilt

PRINCETON (7-14)

3/6/97..... H..... W, 8-7
 3/21/98..... A..... L, 6-5
 5/6/98..... A&..... L, 12-11 (0t)
 3/28/99..... H..... W, 10-4
 3/18/00..... A..... L, 8-6
 5/5/01..... H..... W, 15-10
 3/3/02..... A..... W, 15-13
 5/19/02..... N+..... L, 12-7
 3/28/03..... A..... L, 13-11
 3/26/04..... H..... L, 9-7
 3/30/05..... A..... L, 13-12 (0t)
 3/22/06..... H..... W, 9-7
 5/6/07..... A..... L, 12-11
 5/3/08..... H..... W, 9-8
 5/10/09..... A&..... L, 15-9
 3/28/10..... H..... L, 15-14 (30t)
 3/27/11..... A..... L, 12-11
 3/1/13..... H..... W, 11-6
 3/1/14..... A..... W, 17-16 (0t)
 2/28/15..... H..... L, 11-7
 2/27/16..... A..... L, 10-9
 & NCAA Tournament First Round
 † NCAA Tournament Finals

RANDOLPH-MACON (1-0)

4/21/90..... H..... W, 20-2

RICHMOND (5-10)

4/2/86..... A..... L, 18-8
 3/31/87..... H..... L, 10-8

3/29/88..... A..... L, 15-1
 3/28/89..... H..... L, 9-4
 3/27/90..... A..... L, 8-5
 4/5/91..... H..... L, 6-4
 4/9/92..... A..... L, 15-6
 4/8/93..... H..... L, 14-11
 4/20/94..... A..... L, 17-14
 4/17/95..... H..... W, 10-7
 3/27/96..... A..... W, 15-3
 3/12/97..... H..... L, 8-6
 3/11/98..... A..... W, 18-5
 3/1/02..... H..... W, 15-6
 3/19/03..... A..... W, 9-3

RUTGERS (21-3)

3/25/91..... A..... W, 8-7
 3/21/92..... H..... L, 10-4
 4/10/93..... A..... W, 12-11
 4/9/94..... H..... W, 21-14
 4/8/95..... A..... L, 13-12
 4/20/96..... H..... W, 12-6
 4/19/97..... A..... W, 8-5
 4/18/98..... H..... W, 13-9
 4/3/99..... A..... L, 13-9
 4/1/00..... H..... W, 16-6
 3/31/01..... A..... W, 13-5
 3/30/02..... H..... W, 17-9
 3/30/03..... A..... W, 6-5
 3/28/04..... H..... W, 13-6
 3/26/05..... A..... W, 15-10
 3/25/06..... H..... W, 15-7
 3/24/07..... A..... W, 9-3
 3/22/08..... H..... W, 11-5
 3/29/09..... H..... W, 9-5
 4/17/10..... H..... W, 19-12
 5/1/11..... A..... W, 9-8
 4/28/12..... H..... W, 9-7
 4/19/13..... A..... W, 13-5
 4/16/14..... A..... W, 15-10

SALISBURY STATE (6-4)

4/1/78..... H..... L, 21-2
 4/21/86..... H..... W, 14-11
 4/21/87..... A..... L, 12-11
 4/19/88..... H..... W, 12-6
 4/18/89..... A..... W, 9-6
 4/30/89..... N*^l..... L, 7-5
 4/18/90..... A..... L, 9-7
 5/6/90..... N*..... W, 14-11
 4/18/91..... N..... W, 21-7
 4/27/91..... N*^l..... W, 9-5
 4/7/92..... A..... L, 9-8
 4/24/93..... H..... W, 15-5

* MCWLA Tournament
 † Non-regulation game

SHIPPENSBURG (2-2)

4/15/91..... A..... L, 14-13
 4/12/92..... H..... W, 10-7

4/19/93..... A..... L, 15-14 (0t)
 4/12/94..... H..... W, 18-8

SLIPPERY ROCK (2-1)

3/20/89..... H..... L, 8-5
 3/19/90..... H..... W, 12-4
 3/18/91..... H..... W, 17-7

SAINT JOSEPH'S (PA.) (3-0)

4/3/93..... A..... W, 21-5
 4/5/94..... H..... W, 19-9
 4/20/95..... A..... W, 19-1

ST. MARY'S (9-0)

4/23/78..... A..... W, 5-4
 4/18/80..... A..... W, 10-6
 4/24/82..... H..... W, 21-15
 4/25/84..... A..... W, 13-8
 4/25/85..... H..... W, 17-4
 4/23/86..... H..... W, 20-4
 4/23/87..... H..... W, 20-4
 4/27/89..... H..... W, 15-3
 3/22/90..... A..... W, 16-4

STANFORD (4-1)

3/9/03..... A..... W, 15-7
 5/1/04..... H..... W, 12-3
 3/6/05..... A..... W, 10-6
 3/5/13..... A..... W, 15-8
 3/9/14..... H..... L, 11-10 (20t)

SYRACUSE (14-8)

3/17/99..... H..... W, 17-9
 3/8/00..... A..... W, 16-12
 5/11/00..... H&..... W, 11-10
 3/17/01..... H..... W, 18-6
 3/15/02..... A..... W, 11-6
 3/15/03..... H..... W, 13-3
 3/13/04..... A..... W, 10-5
 3/12/05..... H..... W, 13-6
 3/11/06..... A..... W, 10-7
 3/10/07..... H..... W, 9-8 (20t)
 4/29/07..... N+..... L, 12-7
 4/5/08..... A..... L, 18-3
 4/27/08..... N+..... L, 12-6
 4/3/09..... H..... W, 11-10 (40t)
 5/1/10..... A..... W, 10-9
 5/8/10..... N+..... W, 13-11
 5/15/10..... H&..... L, 15-8
 4/16/11..... H..... W, 12-8
 4/14/12..... A..... L, 22-11
 5/3/12..... A@..... L, 7-6
 4/28/13..... H..... L, 13-7
 5/4/13..... H+..... L, 14-7

@ BIG EAST Tournament Semifinals
 + BIG EAST Tournament Finals
 & NCAA Tournament First Round

TEMPLE (3-5)

4/26/94..... H..... W, 9-7
 4/25/95..... A..... L, 5-14
 4/30/96..... H..... L, 6-7
 4/30/97..... A..... L, 5-8
 4/30/98..... H..... L, 8-11
 4/19/14..... H..... W, 13-6
 4/25/15..... H..... W, 13-12
 4/30/16..... A..... L, 11-4

TOWSON (10-10)

4/10/87..... H..... L, 12-11
 4/14/88..... A..... L, 6-5
 4/13/89..... H..... L, 10-1
 4/26/90..... A..... L, 13-1
 4/25/91..... H..... L, 10-4
 4/30/92..... H..... L, 19-3
 4/29/93..... H..... L, 15-4
 4/28/94..... A..... W, 14-11
 4/22/95..... H..... W, 14-5
 4/17/96..... A..... W, 11-6
 4/8/97..... H..... W, 14-3
 4/25/98..... H..... W, 14-10
 3/31/99..... H..... W, 13-8
 3/29/00..... A..... W, 15-4
 3/1/01..... H..... W, 16-3
 5/12/05..... H&..... W, 15-14
 2/23/13..... H..... W, 13-10
 2/22/14..... A..... L, 14-10
 3/7/15..... H..... L, 13-10
 3/5/16..... A..... L, 8-7
 & NCAA Tournament First Round

UMBC (6-18)

4/19/78..... H..... L, 9-6
 4/11/79..... A..... L, N/A
 3/29/80..... H..... L, 13-5
 3/28/81..... A..... L, 12-1
 4/17/82..... H..... L, 20-8
 4/16/83..... A..... L, 13-2
 3/31/84..... H..... L, 6-3
 4/3/85..... A..... L, 12-4
 4/7/86..... H..... L, 14-13
 4/7/87..... A..... L, 10-9
 4/6/88..... H..... L, 10-7
 4/4/89..... A..... L, 7-5
 4/4/90..... H..... L, 13-4
 4/3/91..... A..... L, 13-8
 3/23/92..... H..... W, 8-7
 4/1/92..... H..... L, 15-7
 3/31/93..... A..... L, 16-9
 3/31/94..... H..... L, 13-7
 3/30/95..... H..... L, 8-7
 5/2/96..... H..... W, 16-3
 3/25/97..... A..... W, 17-2
 4/8/98..... H..... W, 13-5
 4/7/99..... A..... W, 14-7
 4/25/00..... H..... W, 17-3

ALL-TIME RESULTS BY OPPONENT

VANDERBILT (8-0)

3/8/96	H	W, 15-8
3/7/98	H	W, 15-7
3/6/99	A	W, 11-8 (ot)
3/5/00	H	W, 15-7
3/4/01	A	W, 10-4
3/8/02	H	W, 19-5
3/28/15	H	W, 10-6
4/2/16	A	W, 7-5

VIRGINIA (3-8)

4/8/15	A	W, 9-5
4/13/16	H	W, 18-7
4/11/95	A	L, 7-4
3/10/96	H	L, 9-3
3/9/97	A	L, 14-4
3/14/98	H	L, 16-8
5/11/03	A%	L, 16-9
5/21/04	N#	L, 12-9
4/20/05	A	W, 13-11
4/19/06	H	W, 8-4
4/11/07	A	L, 14-7
4/9/08	H	W, 8-7
5/12/13	H&	L, 10-8

& NCAA Tournament Second Round
% NCAA Tournament Quarterfinals
NCAA Tournament Semifinals

VIRGINIA TECH (4-0)

3/7/01	H	W, 21-7
3/10/02	A	W, 11-9
2/25/03	N	W, 17-5
3/7/04	A	W, 16-7

WASHINGTON COLLEGE (1-1)

3/30/82	A	L, 9-7
4/19/83	H	W, 11-9

WESTERN MARYLAND (0-2)

4/27/86	N*	L, 14-12
4/26/87	N*	L, 15-2

* MCWLA Tournament

WILLIAM & MARY (12-1)

3/17/96	H	W, 8-5
3/19/97	A	L, 6-3
3/23/98	H	W, 12-7
3/21/99	A	W, 6-5 (ot)
3/12/00	H	W, 12-3
3/14/01	A	W, 9-7
4/16/02	H	W, 21-12
2/25/03	A	W, 15-13
3/17/04	H	W, 18-3
3/16/05	A	W, 15-7
3/15/06	H	W, 13-3
3/27/07	A	W, 13-5
3/19/08	H	W, 8-7

WILSON (2-0)

4/25/79	H	W, Forf.
4/12/80	H	W, 24-2

VILLANOVA (14-5)

4/5/77	H	L, N/A
4/8/89	A	L, 7-4
4/7/91	H	L, 12-8
4/4/92	A	L, 16-7
3/28/93	H	W, 11-3
3/27/94	A	L, 10-9
4/4/95	H	W, 11-7
4/13/96	A	W, 13-5
3/29/97	H	W, 11-10
4/3/98	A	W, 16-3
4/17/99	H	W, 14-4
3/15/00	A	W, 17-0
3/26/10	A	W, 20-7
3/25/11	H	W, 17-12
3/3/12	A	W, 18-6
4/21/13	A	W, 6-5
4/17/14	H	W, 13-2

SERIES RECORD VS. ALL OPPONENTS

School	Record			School	Record			School	Record		
	W-L-T	First	Last		W-L-T	First	Last		W-L-T	First	Last
American	4-0	1992	2012	James Madison	11-5	1991	2007	Salisbury State	6-4	1978	1993
Anne Arundel	1-0	1989	1989	Johns Hopkins	9-10	1977	2016	Shippensburg	2-2	1991	1994
Boston College	5-0	2001	2005	Lafayette	2-0	1997	2002	Slippery Rock	2-1	1989	1991
Boston University	0-2	2005	2006	Lehigh	4-4	1987	1999	Saint Joseph's (Pa.)	3-0	1993	1995
Brown	0-1	1997	1997	Longwood	4-0	1987	1990	St. Mary's	9-0	1978	1990
Bucknell	4-5	1987	1995	Louisville	7-2	2008	2014	Stanford	4-1	2003	2014
Catonsville C.C.	1-1	1977	1978	Loyola (Md.)	10-8	1977	2016	Syracuse	14-8	1999	2013
Cincinnati	8-0	2009	2016	Marquette	4-0	2013	2016	Temple	3-5	1994	2016
Colgate	2-3	1991	1995	Mary Washington	2-5	1979	1986	Towson	10-10	1987	2016
Connecticut	16-2	2001	2016	Maryland	4-22	1977	2016	UMBC	6-18	1978	2000
Cornell	2-0	2002	2004	Monmouth	1-0	2006	2006	Vanderbilt	8-0	1996	2016
Dartmouth	0-2	1991	2005	Mount St. Mary's	6-0	1984	2006	Villanova	14-5	1977	2016
Delaware	3-2	2012	2016	Mount Vernon College	1-0	1989	1989	Virginia	3-8	1995	2013
Denver	2-0	2008	2009	North Carolina	10-11	1996	2014	Virginia Tech	4-0	2001	2004
Drexel	4-6	1987	1996	Northwestern	0-5	1989	2011	Washington College	1-1	1982	1983
Duke	9-15	1996	2016	Notre Dame College	3-4	1981	1989	Western Maryland	0-2	1986	1987
Essex C.C.	2-4-1	1978	1991	Notre Dame	11-8	2000	2013	William & Mary	12-1	1996	2008
Florida	1-5	2010	2016	Old Dominion	0-1	1990	1990	Wilson	2-0	1979	1980
Frostburg State	3-7	1980	1991	Oregon	2-0	2006	2007	Yale	4-1	1995	2011
George Mason	13-0	1994	2016	Penn	1-3	2012	2016	TOTALS	308-232-3	(.570)	
George Washington	3-0	2007	2009	Penn State	3-3	1999	2004				
Goucher	8-3	1977	1991	Princeton	8-13	1987	2016				
Hartford	0-0	1991	1991	Randolph-Macon	1-0	1990	1990				
Hofstra	1-0	2001	2001	Richmond	5-10	1986	2003				
Hood College	4-2-2	1978	1986	Rutgers	21-3	1991	2014				

bold indicates 2017 opponent

WHERE ARE THEY NOW?

KATE AHEARN (C'02)

Tenant Representative, CB-Richard Ellis
Washington, D.C.

PAIGE ANDREWS SCARDIGLI (MSB'06)

Vice President of Business Development
Monarch Alternative Capital L.P.
New York, N.Y.

CHLOE ASSELIN (C'07)

Early Childhood Teacher
PhD in Urban Education, CUNY
New York, N.Y.

SUSANNE ATKINS RICHARDS (N'99)

Women's Health Nurse Practitioner
West Chester, Pa.

KELLY BARNES (MSB'12)

Assistant Lacrosse Coach/Saint Joseph's University
Philadelphia, Pa.

BRITTANY BASCHUK BELLO (C'07)

International Oceans Program,
Natural Resources Defense Council
New York, N.Y.

LAURYN BERNIER SCOTHORST (C'05)

Chief of Staff, U.S. House of Representatives
Washington, D.C.

MELISSA BILES (C'03)

Head Pastry Chef, The Model Bakery
St. Helena, Calif.

BARB BLACK (C'14)

Associate Account Manager,
Advertising.com, A Division of AOL
Platform
Baltimore, Md.

MEGAN BLOOMER (MSB'09)

Securitized Products Analyst,
Third Point
New York, N.Y.

EMILY BOCK (MSB'10)

Project Manager, RXR Realty at The Ritz-Carlton Residences
New York City, N.Y.

DANIELLE BOEHMCKE CZARNECKI (C'02)

Marketing and Product Development Consultant
New York, N.Y.

LIZANN BOYLE RODE (C'88)

Executive Director, Alumni Relations, The Wharton School
Philadelphia, Pa.

MEGAN BOYLE FLINN (C'91)

Director of Stewardship, The Agnes Irwin School
Rosemont, Pa.

KELSI BOZEL (MSB'13)

Associate, Fischer and Company
Dallas, Texas

HOLLIS BRADLEY PICA (C'05)

Events & Marketing Manager, The ONE Group
Washington, D.C.

MARYBETH BROPHY, (MSB'11)

High Grade Credit Sales, Barclays
New York, N.Y.

KAREN BUTLER-COLBERT (N'94)

Founder of WWellness and Weight Loss Center
Washington, D.C.

MICHELLE CAJULIS (C'94, M'98)

Physician, St. Luke's Roosevelt Hospital
Moorestown, N.J.

KATIE BURTON CARROLL (SFS'09)

Masters in Public Health, George Washington University
Jacksonville Beach, Fla.

ALI CHAMBERS (MSB'05)

Buyer, Calypso St. Barth
New York, N.Y.

LAURA CIPRO (C'07)

Registered Nurse, Johns Hopkins Hospital
Arlington, Va.

LAUREN CLEGG (C'98)

Senior Manager Program Planning,
College Sports Television
New York, N.Y.

KRISTEN COLEMAN (FAIRFIELD '11, SCS'13)

Assistant Director of The Hanley Center
Georgetown Prep
Head Varsity Lacrosse Coach
Academy of the Holy Cross
Washington, D.C.

ROSE CORCORAN (SFS'13)

Associate Director, CCS Fundraising
New York, N.Y.

MJ COYLE (C'15)

Georgetown University Accelerated Nursing Program
Washington, D.C.

JODY CUMBERPATCH (C'14)

Director of Marketing & Content,
Stealz, Inc.
Raleigh, N.C.

BETH DOTY PRUS (MSB'99)

Director of Account Management,
Wray Ward Marketing
Communications
Charlotte, N.C.

MARGO DOYLE DHALIWAL (MSB'94)

Managing Director, Cambridge Associates
Cambridge, Mass.

STACY DUCA MILONE (N'97)

Stay at Home Mom
Villanova, Pa.

KATHLEEN DWYER (C'11)

Stylist, Trunk Club
Assistant Lacrosse Coach, Loyola Academy
Chicago, Ill.

MOLLY EARLY (MSB'12)

Devine + Partners
Philadelphia, Pa.

CATHERINE ELBE HARE (MSB'05)

Vice President Equities Trading,
JMP Securities
New York, N.Y.

ERIN ELBE DAVIDSON (MSB'02)

Equities Trading Desk,
Susquehanna Intl Group LLP
New York, N.Y.

MARGOT ELLIS (C'09)

Group Sales Manager, Blazing Adventures
Aspen, Colo.

MEGAN ELLIS (C'07)

Vice President, Barclays Capital
New York, N.Y.

LAURA FARINA (C'83, SCS'12)

Member, SmithDehn LLP

MARGARET FARLAND GRIFFIN (C'07)

Duke Physician Assistant Program
Carrboro, N.C.

BETHANY FEIL TAIBL (C'03)

Admissions, Episcopal High School
Alexandria, Va.

CHRISTINE FLYNN REGAN (MSB'96)

Director of Retail Operations
for New Business Development,
Tiffany & Co.
Kinnelon, N.J.

MOLLY FORD (MSB'10)

Varsity Lacrosse Coach, Coppell High School
C2c Women's Lacrosse Program
Director
Dallas, Texas

CAITLIN FORMBY (MSB'12)

Registered Nurse- Labor and Delivery Unit, Mercy Medical Center
Baltimore, Md.

CLAIRE FOSTER AVETT (MSB'03)

Policy Analyst, International Relations, Export-Import Bank of the United States
Washington, D.C.

GUERIN FRITZLEN OLSEN (F'80)

Math Teacher, Metro State College of Denver
Englewood, Colo.

ERIKA GABRIELSEN NEUMANN (F'89)

Communications Consultant
New Vernon, NJ

JACQUELINE GILES (MSB'11)

Corporate Accountant, J.Crew Group, Inc.
New York, N.Y.

BOWEN HOLDEN MARTIN (C'01, MPP'06)

Mother of 3
Part-Time Teacher
Assistant Coach, US U-19 National Lacrosse Team
Head Varsity Lacrosse Coach,
Lincoln-Sudbury High School
Chestnut Hill, Mass.

DINA JACKSON (MSB'13)

Marketing and PR Associate,
SPARKS Consulting Group
Alexandria, Va.

ASHBY KAESTNER (MSB'10)

Manager, East Coast Client Services,
MLB Advanced Media
New York, N.Y.

JORDAN KEATING (C'00)

Account Executive, Online Advertising, New York Post
New York, N.Y.

JORDYN KIRR (C'11)

Assistant Women's Lacrosse Coach,
Marquette University
Milwaukee, Wis.

MAGGIE KOCH (C'07)

Owner, Jolly Laxer Goggle Straps
Head Coach, Episcopal School
of Dallas
Dallas, Tex.

WHERE ARE THEY NOW?

CHRISTINE LINDSEY (MSB'98)

Director of Human Resources, Tessey Plastics
Syracuse, NY.

KIMBERLY LONGSTRETH VOGEL (N'97)

Stay at Home Mom
Yardley, Pa.

ERIN LOVETT (MSB'12, SCS'13)

Sales Associate, Tyco Integrated Security
New York, NY.

GLORIA LOZANO (F'04)

Campus Recruiter, Deloitte Consulting
Philadelphia, Pa.

SANDI L. MANUS (C'90)

Gastroenterology Fellowship, Wake Forest University
Winston-Salem, N.C.

AMANDA MARSTED (MSB'91)

Private Wealth Manager, Brown Brothers Harriman
New York, NY.

KERI MCBRIDE MACCOLL (C'03)

Executive Director, Equities Cash Trading, J.P. Morgan
New York, NY.

LOGAN MCCRAW (MSB'11)

Merchandise and Sales Planner for Action Sports, Under Armour
Baltimore, Md.

CARLY NAPORA (MSB'12)

Business Analyst, T. Rowe Price
Owings Mills, Md.

BRIDGET NOON (C'09)

Emergency Room RN, George Washington University Hospital
Washington, D.C.

KATIE O'BRIEN (C'12)

Senior Coordinator - Communications, Marketing & Special Projects
Alexandria Real Estate Equities, Inc.
New York, NY.

SARAH O'BRIEN (MSB'90)

Relationship Manager, Citigroup
New York, NY.

SARAH OGLESBY SLOMKOWSKI (C'01)

Director of Operations, Athletes Serving Athletes
Baltimore, Md.

SARAH OLIPHANT CRENNAN (C'05)

Marketing and Communications Director, the AOL On Network
New York, NY.

EVAN O'NEILL (MSB'13)

Financial Services Office, Ernst & Young
Washington, D.C.

ANOUC PETERS (C'04)

Holistic Nutrition Therapist, Nutrition Therapy Institute ('18)
Investment Accountant, Audit and Reporting, Janus Capital
Denver, Colorado

PATTY PIOTROWICZ (MSB'08)

Associate, Versa Capital Management
Philadelphia, Pa.

HILARY POLK-WILLIAMS (MSB'03)

Full-Time MBA Candidate, Oxford University Said School of Business
Oxford, England

LUCY POOLE (C'06)

E-Commerce, Marine Layer
San Francisco, Calif.

JACQUELINE PROCH (C'10)

REV Westchester Coordinator, Revolution Lacrosse
New York, NY.

KRISTIN RANERI NICOLINI (C'02)

Director of Integrated Media Strategies
Varsity Lacrosse Coach, Roland Park Country School
Baltimore, Md.

LAUREN HANNON REDLER (C'05, M'09)

Chief Resident, Orthopaedic Surgery, Columbia University Medical Center
New York, NY.

SARAH "SC" ROBINSON (SFS '05)

Juris Doctor, The Catholic University of America, Columbus School of Law
Consultant, Cyber Risk Services, Deloitte & Touche, LLP
Washington, D.C.

ELIZABETH RYAN MARTINEZ (C'03)

Assistant Solicitor, Baltimore City Law Department
Baltimore, Md.

RACHAEL A. RYAN (C'92)

History and American Government Teacher
Head Field Hockey Coach, Taft School
Watertown, Conn.

SARAH SEATS (MSB'10)

Assistant Buyer, Saks Fifth Avenue
New York, NY.

BLAKE SHEEHAN (MSB'10)

Associate Portfolio Manager, Brown Advisory
Baltimore, Md.

KRISTIN SMITH CONNELL (C'06)

School Psychologist, Elwyn
Philadelphia, Pa.

COCO STANWICK BRANT (SFS'07)

Sales Executive, CEB
Washington, D.C.

SHEEHAN STANWICK BURCH (C'01)

Television Analyst, CBS Sports Network
Baltimore, Md.

WICK STANWICK MIESNER (MSB'03)

Larchmont, NY.

MARY STUART-KILNER (C'81)

Vice President of Finance, PNC Bank
Cranston, R.I.

SCHUYLER SUTTON (C'07)

Manager- Advertising Stylist, Ralph Lauren
New York, NY.

LAUREN THOMAS (C'11)

Design Assistant & Assistant Buyer, J Banks Design
Certified Personal Trainer, Beach City Fitness
Hilton Head Island, S.C.

JORDAN TRAUTMAN (C'09)

Head Women's Lacrosse Coach, Kean University
Union, N.J.

MALLORY TWIST (C'10)

Inside Sales, Architectural Ceramics, Inc
Event Coordinator and Co-Owner, A Taste of Painting
Baltimore, Md.

DANIELLE VAN FOSSAN (MSB '12)

Analyst, JPMorgan
New York, NY

CHANDLER VICCHIO (C'02)

Managing Editor, Eber & Wein Publishing
Shrewsbury, Pa.

KIMBERLY LONGSTRETH VOGEL (N'97)

Stay at Home Mom
Girls Youth Lacrosse Coach
Yardley, Pa.

JESS WALLS BEERS (C'01)

Stay at Home Mom
Philadelphia, Pa.

TRACY WEICKEL BERNARD (MSB'03)

Vice President, Energi, Inc.
Philadelphia, Pa.

AMELIA WESSELINK (C'08)

PhD Student, Epidemiology, Boston University
Boston, Mass.

MARY WITTELSBERGER (C'11)

Youth Development Volunteer, Peace Corps
El Salvador

REILLY WOODMAN (C'14)

Sales Development Representative, Brandwatch
New York, NY.

STEPHANIE ZODTNER (MSB'06)

Telluride Academy and Just For Kids Foundation
Telluride, Colo.

THE BIG EAST CONFERENCE

The BIG EAST Conference moves forward in 2016-17, the fourth year of its current consortium of 10 outstanding and revered academic institutions. Founded by Dave Gavitt in 1979, the BIG EAST reorganized in 2013 and entered a new era by returning to its basketball-centric heritage. The league's 10 member schools—Butler University, Creighton University, DePaul University, Georgetown University, Marquette University, Providence College, St. John's University, Seton Hall University, Villanova University, and Xavier University—embrace a constant commitment to academic integrity, athletic excellence and community service.

Val Ackerman, who previously served as founding President of the WNBA, President of USA Basketball and U.S. representative to the International Basketball Federation (FIBA), was named fifth Commissioner of the BIG EAST in conjunction with the conference's 2013 reconfiguration. Under her leadership, the BIG EAST has maintained its reputation for top-level achievement in athletics and has continued to be influential on the national intercollegiate landscape, with many conference and school administrators currently serving on key NCAA committees.

Since its inception in 1979, the BIG EAST has been lauded as a leader in innovative concepts in promotion, particularly television, and that reputation continues with the conference's relationship with FOX Sports. The BIG EAST has a fruitful multi-year partnership with FOX Sports and its national cable network FS1. FOX's comprehensive coverage of BIG EAST men's basketball includes the broadcast of all regular season games on FOX, FS1, FS2 or FOX Regional Networks, as well as the BIG EAST Tournament at Madison Square Garden, college basketball's longest-running postseason basketball conference tourney held at the same venue. The BIG EAST and FOX also have established an annual five-game marathon in men's basketball with all 10 teams competing on the same day in league competition.

BIG EAST institutions are located in seven of the nation's top 35 largest media markets, including New York, Chicago, Philadelphia, Washington, D.C., Indianapolis, Milwaukee and Cincinnati.

FOX Sports platforms carry complete coverage of women's basketball regular season play and the BIG EAST Women's Basketball Tournament. Every Olympic sport championship is also carried on the network or digital platforms.

The BIG EAST has also increased the visibility of its member school programs with the expansion of the BIG EAST Digital Network (BEDN). When the conference launched BEDN in 2014-15, the league became the first collegiate conference to be hosted on the FOX Sports mobile platform, FOX Sports Go, the app that provides live streaming of FOX Sports content. BEDN will carry 225 live events in 2016-17, with an emphasis on women's basketball, soccer and Olympic sport regular season and championship events.

The BIG EAST Conference became a reality in May of 1979 through the vision of Gavitt, the former Providence College men's basketball coach and athletic director. Providence, St. John's, Georgetown, Syracuse, Seton Hall, Connecticut and Boston College formed the original seven-school alliance, and within the span of just a few years the conference had become a national powerhouse in men's basketball. While the composition of the BIG EAST evolved over the next three decades, the focus of its schools did not waver, reflecting a tradition of broad-based programs led by administrators and coaches who emphasize academic strength and fair play.

In December of 2012, the seven BIG EAST schools that do not compete in FBS football—DePaul, Georgetown, Marquette, Providence, St. John's, Seton Hall and Villanova—announced their intention to separate from the conference's football-playing schools and form an independent association. On March 20, 2013, the seven schools reached an agreement that enabled them to retain the BIG EAST name and assume the old conference's long-term pact with Madison Square Garden to host the BIG EAST Men's Basketball Tournament, one of the premier events in college athletics. The schools also announced the addition of three distinguished institutions sharing the same academic and athletic values—Butler, Creighton and Xavier—and forged a landmark, long-term broadcast partnership with FOX Sports. The BIG EAST moved its headquarters from its original location in Providence, R.I., to midtown Manhattan in New York City to complete the transformation. The BIG EAST's new era officially began on July 1, 2013, its effective date as the NCAA's 32nd Division I conference.

To complement its athletic successes, the conference launched BIG EAST Serves in 2014 to align the academic, health, leadership and service missions of the 10 member institutions. Initiatives housed under the BIG EAST Serves umbrella, such as BIG EAST Serves Day, the BIG EAST Career Consortium and the national partnership with the It's On Us campaign against campus sexual assaults, reflect the conference's commitment to developing the complete BIG EAST student-athlete and making a positive contribution to the campus communities of its member schools and conference's headquarters in New York.

In the fall of 2015, the BIG EAST hosted its inaugural Freshmen Fundamentals, a unique program designed to assist men's basketball student-athletes in the transition from high school to college and the elite level of BIG EAST basketball.

BIG EAST institutions boast high graduation rates for their student-athletes, and the league has always been able to say that many of its best athletes are also its best students. Ryan Arcidiano, the starting guard for Villanova's national champion men's basketball team and the Most Outstanding Player at the 2016 Final Four, also was one of five finalists for the 2015-16 Senior CLASS Award in his sport for excellence in classroom, community, character and competition. DePaul women's tennis standout Rebecca Mitrea was a conference nominee for NCAA Woman of the Year, an award that honors academic achievements, athletic excellence, community service and leadership. On the court, Mitrea is DePaul's all-time leader in wins with 117. She competed in the doubles of the 2016 NCAA Tennis Championship. Mitrea also was honored with the Arthur Ashe Leadership and Sportsmanship Award from the Intercollegiate Tennis Association (ITA).

The conference, which crowns champions in 22 sports, had league teams earn a total of 24 NCAA berths and 42 individual NCAA invitations in 2015-16. Seven different national postseason championships saw multiple BIG EAST teams participate, including five teams in men's basketball and three in women's basketball. BIG EAST schools produced 12 CoSIDA Academic All-Americans, including six in soccer (four male, two female).

Current BIG EAST men's basketball programs have enjoyed extraordinary success over the years. Villanova won the 2016 NCAA Championship, its second in school history. Georgetown and Marquette also have won the national title. DePaul, Providence, St. John's and Seton Hall have all made it to the Final Four. The BIG EAST placed three men's basketball teams in the Final Four in 1985—Georgetown, St. John's and Villanova—the only time this has occurred in NCAA history. Over the past 13 years, Butler, Georgetown, Marquette and Villanova have reached the Final Four, with Butler and Villanova making two trips. Xavier has advanced to the Elite Eight twice and the Sweet 16 four other times.

BIG EAST student-athletes have achieved recent success in other sports, as well. A BIG EAST team has won the NCAA women's cross country championship four of the last seven years (Villanova won twice; Providence and Georgetown once), with one runner-up finish (Providence). Creighton's men's soccer team has reached the NCAA College Cup in two of the past four seasons, with the Providence men advancing to the semifinals in 2014.

In the 37 years since the original league opened its doors, BIG EAST teams have won 39 national championships in eight different sports with 144 student-athletes winning individual national titles in the league's history. Since 2013, the BIG EAST has produced eight national champions.



Earn more cash back for the things you buy most

The BankAmericard Cash Rewards™ credit card for the Georgetown University Alumni Association.

- 1%** cash back everywhere, every time
- 2%** cash back at grocery stores **AND NOW AT WHOLESALE CLUBS**
- 3%** cash back on gas

\$100
cash rewards bonus
after qualifying purchase(s)†

2% and 3% category rewards bonuses apply on up to \$2,500 in combined quarterly spend in those categories.▼

To apply visit: newcardonline.com

Use Priority Code VACN3B.

Brought to you by:
Bank of America 

For information about the rates, fees, other costs and benefits associated with the use of this Rewards card, or to apply, go to the website listed above or write to P.O. Box 15020, Wilmington, DE 19850.

▼ The 2% cash back on grocery store and wholesale club purchases and 3% cash back on gas purchases applies to the first \$2,500 in combined purchases in these categories each quarter. After that the base 1% earn rate applies to those purchases.

† You will qualify for \$100 bonus cash rewards if you use your new credit card account to make any combination of Purchase transactions totaling at least \$500 (exclusive of any fees, returns and adjustments) that post to your account within 90 days of the account open date. Limit one (1) bonus cash rewards offer per new account. This one-time promotion is limited to new customers opening an account in response to this offer. Other advertised promotional bonus cash rewards offers can vary from this promotion and may not be substituted. Allow 8-12 weeks from qualifying for the bonus cash rewards to post to your rewards balance.

By opening and/or using these products from Bank of America, you'll be providing valuable financial support to the Georgetown University Alumni Association.

This credit card program is issued and administered by Bank of America, N.A. Visa and Visa Signature are registered trademarks of Visa International Service Association, and are used by the issuer pursuant to license from Visa U.S.A. Inc. BankAmericard Cash Rewards is a trademark and Bank of America and the Bank of America logo are registered trademarks of Bank of America Corporation.

JOHN R. THOMPSON JR. INTERCOLLEGIATE ATHLETIC CENTER





COOPER FIELD



Situated in the heart of Georgetown's campus, Cooper Field is the current home of the men's and women's lacrosse programs, field hockey and the football program. The facility hosts more than 30 intercollegiate football and lacrosse games per year. The FieldTurf surface has a seating capacity of 2,500.

GEORGETOWN WOMEN'S LACROSSE RECORD AT COOPER FIELD

YEAR	W	L	PCT.
2006	7	0	1.000
2007	5	3	.625
2008	6	2	.750
2009	8	3	.727
2010	7	2	.778
2011	5	4	.556
2012	5	4	.556
2013	6	4	.600
2014	5	4	.556
2015	5	4	.556
2016	2	6	.250
TOTALS	61	36	.629



RACHEL RAUSA



ALYSSA MURRAY | TEAM USA | NO. 17



STX.COM



TASTE
RIGHT OUT OF
THE COKE[®]
PLAYBOOK

Proud Partner of Georgetown University

REAL *Coca-Cola* TASTE
AND ZERO CALORIES

©2009 The Coca-Cola Company. "Coca-Cola," "Coca-Cola Zero," the Contour Bottle design and the Dynamic Ribbon are trademarks of The Coca-Cola Company.