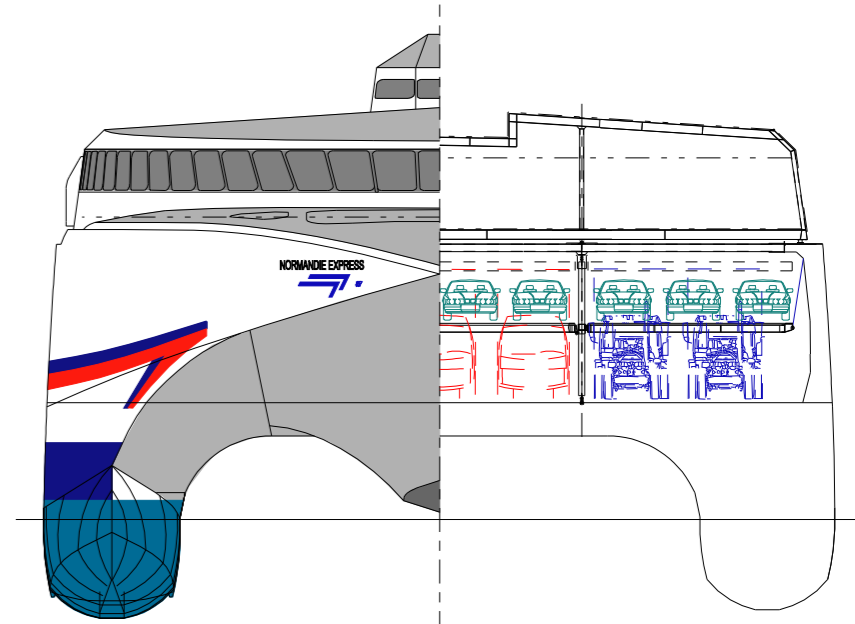
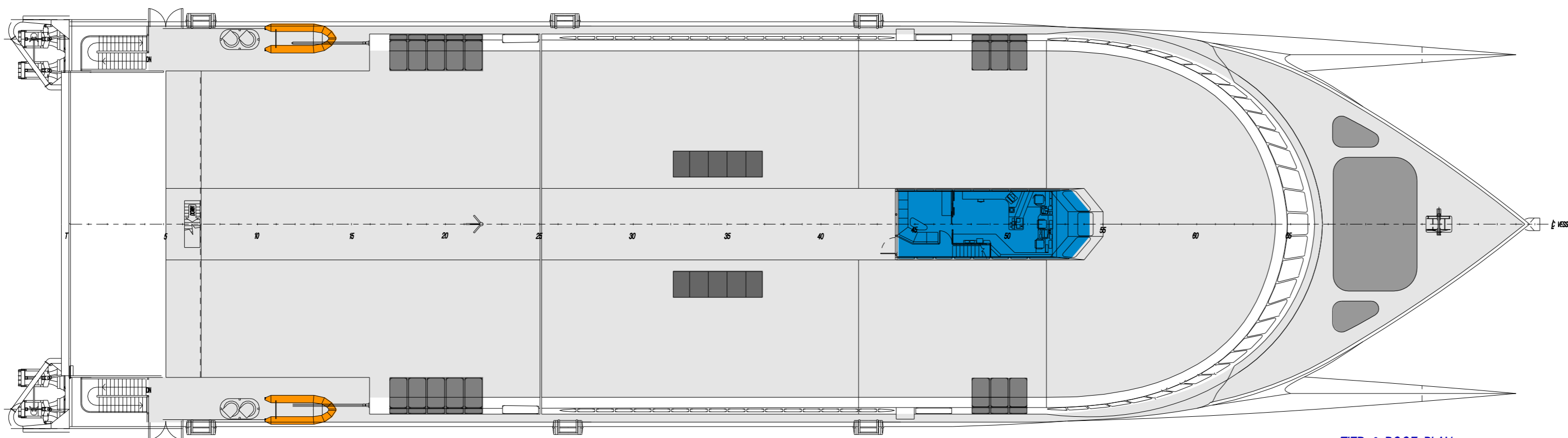


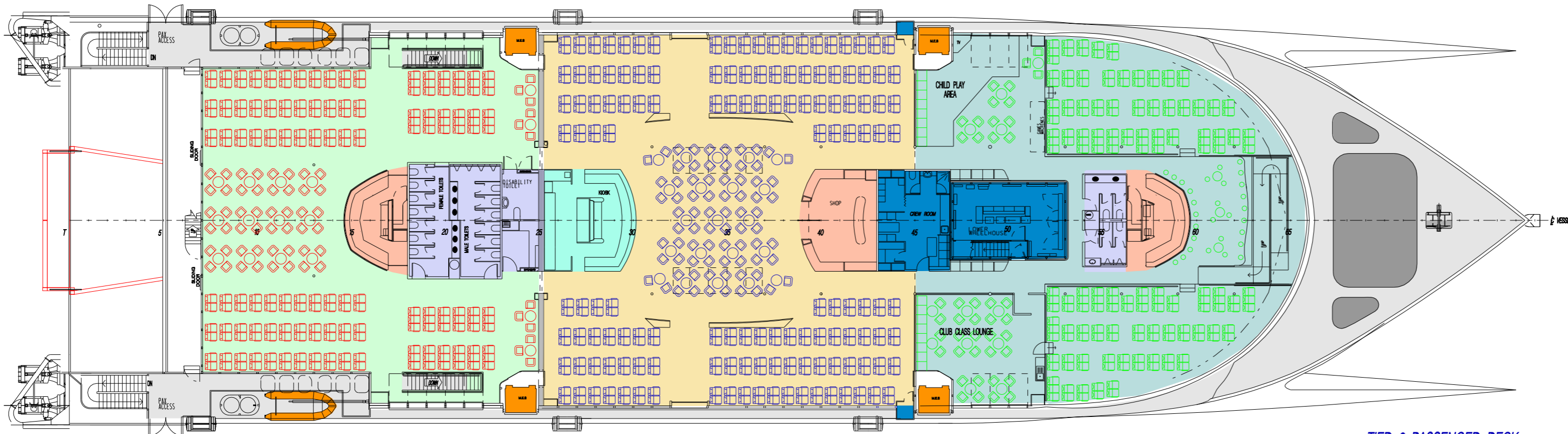
OUTBOARD PROFILE



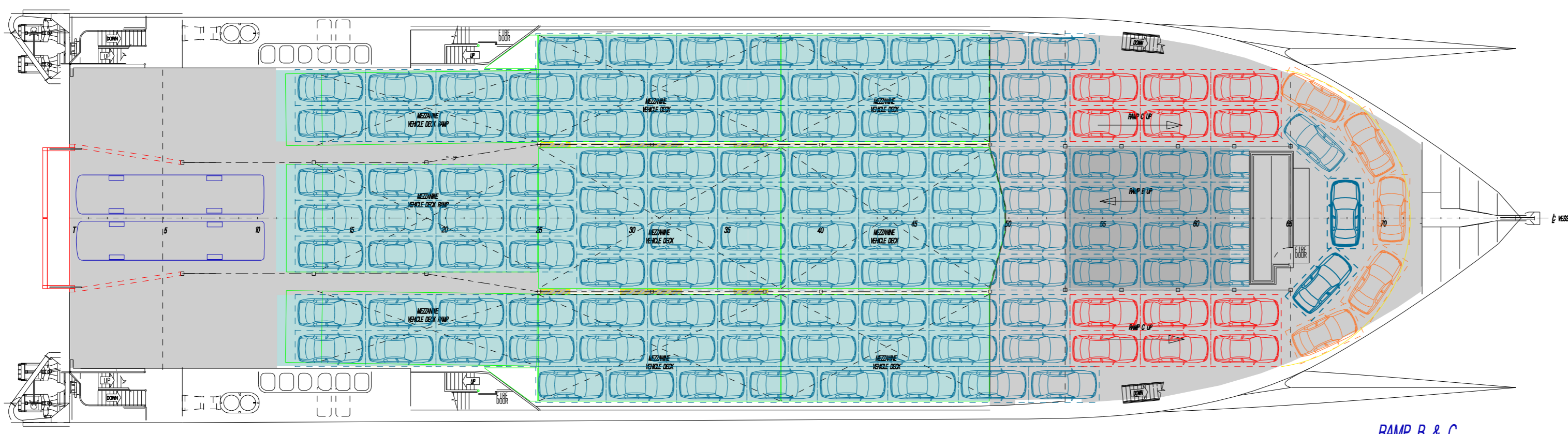
INBOARD PROFILE



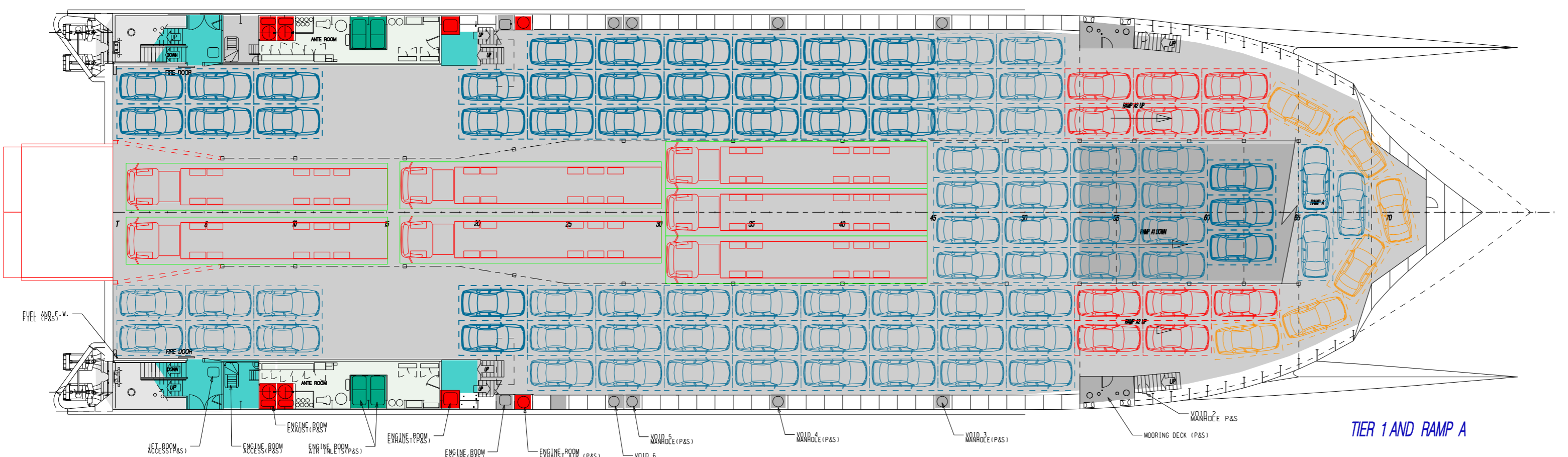
TIER 2 ROOF PLAN AND WHEELHOUSE LAYOUT



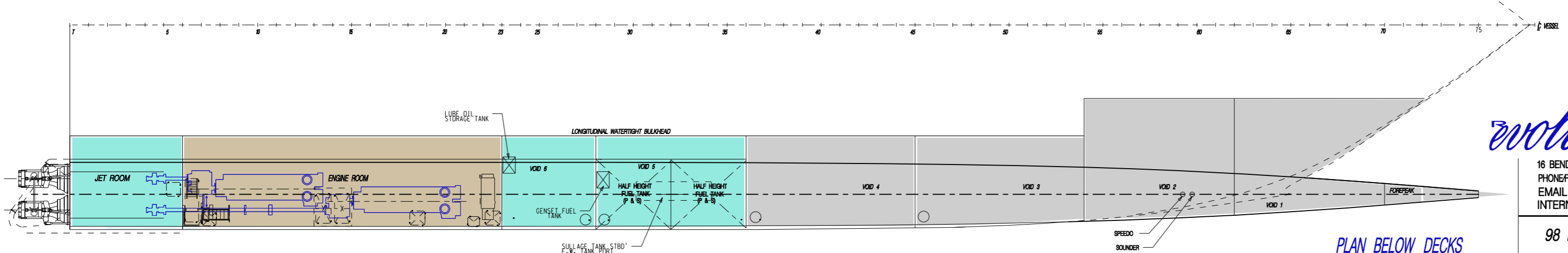
TIER 2 PASSENGER DECK



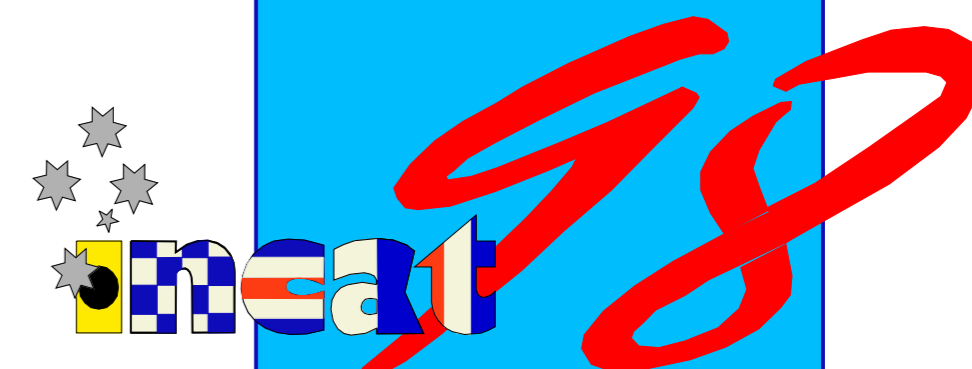
RAMP B & C



TIER 1 AND RAMP A



PLAN BELOW DECKS



Length overall 97.22m  
 Length waterline 92.00m  
 Beam overall 26.62m  
 Draft @ full displ. 3.40m  
 Draft @ lightship 2.19m  
 Deadweight 750 tonnes (Approx)

Total car capacity (min) 267 spaces  
 @ 4.5m X 2.3m. Approx. 1200 lane metres  
 Total truck capacity approx. 380 lane metres  
 plus 90 cars @ 4.5m X 2.3m

Complement 900 persons

**revolution** DESIGN

16 BENDER DRIVE MOONAH TASMANIA 7009 AUSTRALIA  
 PHONE/FAX +61 3 6274 1845  
 EMAIL revolutiondesign@revolutiondesign.com.au  
 INTERNET www.revolutiondesign.com.au

98 M WAVE PIERCING CATAMARAN  
 PROPOSED  
 GENERAL ARRANGEMENT

ISSUED TO:	ISSUE DATE:
ISSUED BY:	APPROVED BY:
DRAWN BY: G. STEWART	DATE: 06 DEC '04
DWG. No: CPV-98-32-361	SCALE: 1:250 (A1)
REV: C	REV. DATE: 21 DEC '04

THIS DRAWING AND THE INFORMATION CONTAINED THEREIN IS THE EXCLUSIVE PROPERTY OF REVOLUTION DESIGN AND IS NOT TO BE REPRODUCED OR TRANSMITTED IN ANY FORM OR BY ANY MEANS WITHOUT PERMISSION IN WRITING.