

1916 Necrology

485



FOUNDED IN 1828

GLASNEVIN TRUST

INCORPORATING:
GOLDENBRIDGE

DARDISTOWN
NEWLANDS CROSS

GLASNEVIN
PALMERSTOWN





1916 Necrology

485



Exterior of G.P.O. after Evacuation, showing broken flag-post from which Republican flag was flown.



Irish Rebellion, May, 1916.

*Talbot Street, Dublin, held against a rebel charge.
Picture taken under fire.*



FOUNDED IN 1828

GLASNEVIN TRUST

INCORPORATING: DARTMOUTH NEWLANDS CROSS
GOLDENBRIDGE PALMERSTOWN

POBLACHT NA H EIREANN, THE PROVISIONAL GOVERNMENT OF THE IRISH REPUBLIC TO THE PEOPLE OF IRELAND.

IRISHMEN AND IRISHWOMEN: In the name of God and of the dead generations from which she receives her old tradition of nationhood, Ireland, through us, summons her children to her flag and strikes for her freedom.

Having organised and trained her manhood through her secret revolutionary organisation, the Irish Republican Brotherhood, and through her open military organisations, the Irish Volunteers and the Irish Citizen Army, having patiently perfected her discipline, having resolutely waited for the right moment to reveal itself, she now seizes that moment, and, supported by her exiled children in America and by gallant allies in Europe, but relying in the first on her own strength, she strikes in full confidence of victory.

We declare the right of the people of Ireland to the ownership of Ireland, and to the unfettered control of Irish destinies, to be sovereign and indefeasible. The long usurpation of that right by a foreign people and government has not extinguished the right, nor can it ever be extinguished except by the destruction of the Irish people. In every generation the Irish people have asserted their right to national freedom and sovereignty; six times during the past three hundred years they have asserted it in arms. Standing on that fundamental right and again asserting it in arms in the face of the world, we hereby proclaim the Irish Republic as a Sovereign Independent State, and we pledge our lives and the lives of our comrades-in-arms to the cause of its freedom, of its welfare, and of its exaltation among the nations.

The Irish Republic is entitled to, and hereby claims, the allegiance of every Irishman and Irishwoman. The Republic guarantees religious and civil liberty, equal rights and equal opportunities to all its citizens, and declares its resolve to pursue the happiness and prosperity of the whole nation and of all its parts, cherishing all the children of the nation equally, and oblivious of the differences carefully fostered by an alien government, which have divided a minority from the majority in the past.

Until our arms have brought the opportune moment for the establishment of a permanent National Government, representative of the whole people of Ireland and elected by the suffrages of all her men and women, the Provisional Government, hereby constituted, will administer the civil and military affairs of the Republic in trust for the people.

We place the cause of the Irish Republic under the protection of the Most High God, Whose blessing we invoke upon our arms, and we pray that no one who serves that cause will dishonour it by cowardice, inhumanity, or rapine. In this supreme hour the Irish nation must, by its valour and discipline and by the readiness of its children to sacrifice themselves for the common good, prove itself worthy of the august destiny to which it is called.

Signed on Behalf of the Provisional Government,

THOMAS J. CLARKE.

SEAN Mac DIARMADA.

THOMAS MacDONAGH.

P. H. PEARSE.

EAMONN CEANNT.

JAMES CONNOLLY.

JOSEPH PLUNKETT.

1916 Necrology

485



FOUNDED IN 1828

GLASNEVIN TRUST

INCORPORATING:
GOLDENBRIDGE

DARDISTOWN
NEWLANDS CROSS

GLASNEVIN
PALMERSTOWN

This list researched by Glasnevin Trust shows 485 men, women and children killed during or as a direct result of the 1916 Rebellion. Some of the names of those listed are well known, but the majority are the unknown dead of 1916. In many cases their names had been lost in the sands of time until now. Their stories tell the true history of the rebellion and what it meant for Ireland. We would like people who are related to, or have information on those listed, to get in contact with us so we can further expand these stories in advance of our exhibition and events to mark the centenary of the Rebellion. The names listed here will be engraved on a new memorial at Glasnevin Cemetery that will be unveiled on the centenary of the Rebellion.

This major research work has revealed many interesting and previously unknown facts. The majority of the dead were civilians, 54% of the total dead, caught up in the fighting. British Army dead accounted for 26% of those killed while the rebel forces had 16% of the casualties. The remaining percentage is made up of members of the Dublin Metropolitan Police and Royal Irish Constabulary. The numbers of civilians killed each day steadily increased, peaking on the final day of the rebellion 29 April when 45 died. This was also the most violent day of the rebellion during which 78 people lost their lives. 26 April, the day of the Battle of Mount Street Bridge, was the worst for the British Army losing 30 men during the fighting throughout the city. The rebels also suffered their worst casualties on this day with 13 men killed. For the police the day of the Battle of Ashbourne, 28 April, proved to be their worst.

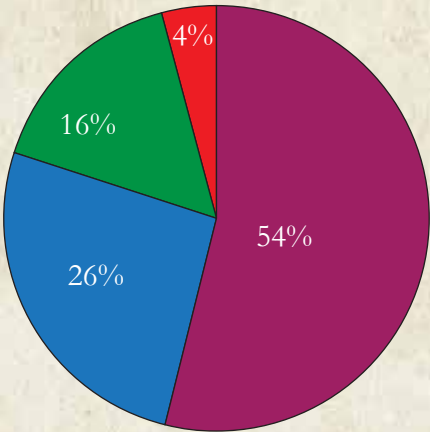
The vast majority of those killed were buried at Glasnevin Cemetery in the aftermath of the fighting. The staff of the cemetery struggled to deal with the large numbers of bodies being brought for burial. Despite great strain they succeeded in giving all a dignified burial and recorded their details in our registers. One contemporary newspaper account gave an insight into the scenes that those present witnessed:

“Residents in the vicinity of the Glasnevin Cemetery witnessed many pathetic scenes during the week. On Sunday there were few dry eyes along the cemetery road when a solitary mourner followed the remains of some relative to the cemetery. She was an old lady, white-haired, and weak looking. In front, the hearse rattled along at a fast pace and the lady obviously tired almost to collapsing point, tumbled rather than walked some distance in the rear. Everynow and then she broke into a little run to keep up with the hearse. In her hands she clasped a crucifix, which she held out before her when she quickened her pace as if she found in it some power to draw forward her tired and weakened body. At another funeral one man, apparently the father, carried under his arm a rough improvised coffin containing the remains of a child. The little procession crossed from the Drumcondra district on their way to the cemetery, the parent changing the coffin from one arm to another as they made the journey. They were greeted everywhere with expressions of sympathy which touched them frequently to tears, the father breaking down completely again and again on the route. Thus all the way to the cemetery gates, while the residents along the route expressed their helpless sympathy in moistening eyes. This was only a typical but perhaps somewhat more poignant example of the pathos on the road to the cemetery.”

The story of Glasnevin Cemetery and those buried here is central to the history of the 1916 Rebellion. The full significance of this list will be further explored in the 1916 Rebellion Centenary Exhibition at Glasnevin Cemetery Museum. We hope you will join with us and support us in telling that story.

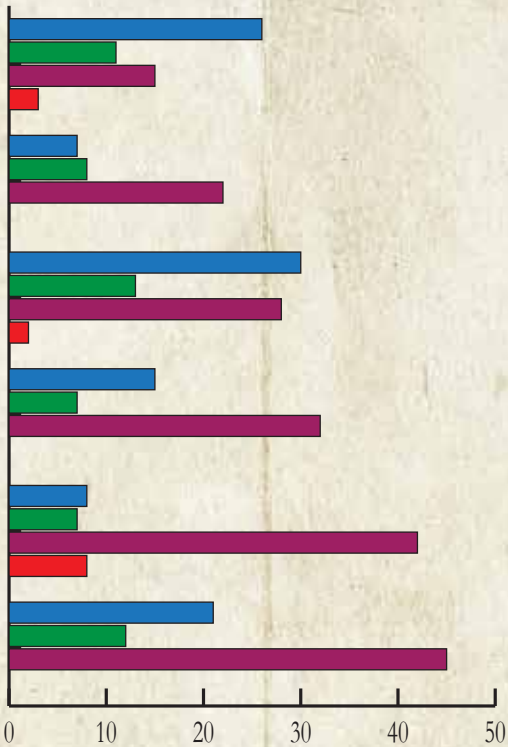
Additional information on all of the names listed is currently held by Glasnevin Cemetery Museum.

Some
1916
Rebellion
Statistics



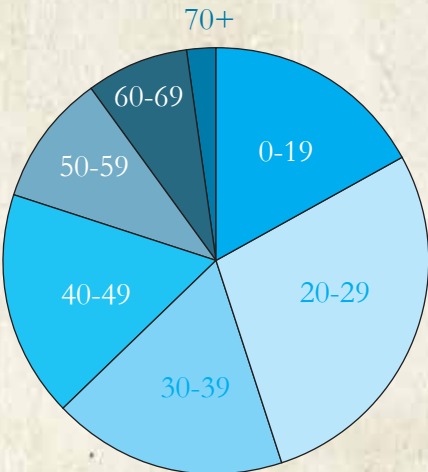
1916 Rebellion Casualties

- Civilians
- British Armed Forces
- Rebel Forces
- Police



1916 Rebellion 24-29th April

24 APRIL:		27 APRIL:	
British Armed Forces:	26	British Armed Forces:	15
Rebel Forces:	11	Rebel Forces:	7
Civilian:	15	Civilian:	32
Police:	3	Police:	0
25 APRIL:		28 APRIL:	
British Armed Forces:	7	British Armed Forces:	8
Rebel Forces:	8	Rebel Forces:	7
Civilian:	22	Civilian:	42
Police:	0	Police:	8
26 APRIL:		29 APRIL:	
British Armed Forces:	30	British Armed Forces:	21
Rebel Forces:	13	Rebel Forces:	12
Civilian:	28	Civilian:	45
Police:	2	Police:	0



Age Profile of
1916 Rebellion Casualties

- 0-19: 17%
- 20-29: 28%
- 30-39: 18%
- 40-49: 17%
- 50-59: 10%
- 60-69: 8%
- 70+: 2%

Glasnevin Trust - 1916 List

Initials (Grave Record)

P H

Forename (Grave Record)

PERCIVAL HAVELOCK

Surname (Grave Record)

ACHESON

Date of Death (Grave Record)

29/04/1916

Affiliation

British Army



FOUNDED IN 1828

GLASNEVIN TRUST

INCORPORATING: DARDISTOWN GLASNEVIN
GOLDENBRIDGE NEWLANDS CROSS PALMERSTOWN

Glasnevin Trust - 1916 List

Initials (Grave Record)

J F

Forename (Grave Record)

JAMES FRANCIS

Surname (Grave Record)

ADAMS

Date of Death (Grave Record)

24/04/1916

Affiliation

Irish Citizen Army



FOUNDED IN 1828

GLASNEVIN TRUST

INCORPORATING: DARDISTOWN GLASNEVIN
GOLDENBRIDGE NEWLANDS CROSS PALMERSTOWN

Glasnevin Trust - 1916 List

Initials (Grave Record)

HTW

Forename (Grave Record)

HENRY THOMAS WARD

Surname (Grave Record)

ALLATT

Date of Death (Grave Record)

08/05/1916

Affiliation

British Army



FOUNDED IN 1828

GLASNEVIN TRUST

INCORPORATING: DARDISTOWN GLASNEVIN
GOLDENBRIDGE NEWLANDS CROSS PALMERSTOWN

Glasnevin Trust - 1916 List

Initials (Grave Record)

T

Forename (Grave Record)

THOMAS

Surname (Grave Record)

ALLEN

Date of Death (Grave Record)

27/04/1916

Affiliation

Irish Volunteers



FOUNDED IN 1828

GLASNEVIN TRUST

INCORPORATING: DARDISTOWN GLASNEVIN
GOLDENBRIDGE NEWLANDS CROSS PALMERSTOWN

Glasnevin Trust - 1916 List

Initials (Grave Record)

B

Forename (Grave Record)

BRIDGET

Surname (Grave Record)

ALLEN

Date of Death (Grave Record)

27/04/1916

Affiliation

Civilian



FOUNDED IN 1828

GLASNEVIN TRUST

INCORPORATING: DARDISTOWN GLASNEVIN
GOLDENBRIDGE NEWLANDS CROSS PALMERSTOWN

Glasnevin Trust - 1916 List

Initials (Grave Record)

J

Forename (Grave Record)

JOSEPH (CHRISTOPHER)

Surname (Grave Record)

ANDREWS

Date of Death (Grave Record)

26/04/1916

Affiliation

Civilian



FOUNDED IN 1828

GLASNEVIN TRUST

INCORPORATING: DARDISTOWN GLASNEVIN
GOLDENBRIDGE NEWLANDS CROSS PALMERSTOWN

Glasnevin Trust - 1916 List

Initials (Grave Record)

J H

Forename (Grave Record)

JOHN HERBERT

Surname (Grave Record)

ARMSTRONG

Date of Death (Grave Record)

24/04/1916

Affiliation

Civilian



FOUNDED IN 1828

GLASNEVIN TRUST

INCORPORATING: DARDISTOWN GLASNEVIN
GOLDENBRIDGE NEWLANDS CROSS PALMERSTOWN

Glasnevin Trust - 1916 List

Initials (Grave Record)

J

Forename (Grave Record)

JOHN

Surname (Grave Record)

BALLANTYNE

Date of Death (Grave Record)

01/05/1916

Affiliation

Civilian



FOUNDED IN 1828

GLASNEVIN TRUST

INCORPORATING: DARDISTOWN GLASNEVIN
GOLDENBRIDGE NEWLANDS CROSS PALMERSTOWN

Glasnevin Trust - 1916 List

Initials (Grave Record)

A

Forename (Grave Record)

ALICE

Surname (Grave Record)

BAMBRICK

Date of Death (Grave Record)

25/04/1916

Affiliation

Civilian



FOUNDED IN 1828

GLASNEVIN TRUST

INCORPORATING: DARDISTOWN GLASNEVIN
GOLDENBRIDGE NEWLANDS CROSS PALMERSTOWN

Glasnevin Trust - 1916 List

Initials (Grave Record)

A

Forename (Grave Record)

ARTHUR

Surname (Grave Record)

BANKS

Date of Death (Grave Record)

29/04/1916

Affiliation

British Army



FOUNDED IN 1828

GLASNEVIN TRUST

INCORPORATING: DARDISTOWN GLASNEVIN
GOLDENBRIDGE NEWLANDS CROSS PALMERSTOWN

Glasnevin Trust - 1916 List

Initials (Grave Record)

F C

Forename (Grave Record)

FREDERICK CHARLES

Surname (Grave Record)

BANTING

Date of Death (Grave Record)

29/04/1916

Affiliation

British Army



FOUNDED IN 1828

GLASNEVIN TRUST

INCORPORATING: DARDISTOWN GLASNEVIN
GOLDENBRIDGE NEWLANDS CROSS PALMERSTOWN

Glasnevin Trust - 1916 List

Initials (Grave Record)

GW

Forename (Grave Record)

GEORGE WILLIAM

Surname (Grave Record)

BARKS

Date of Death (Grave Record)

26/04/1916

Affiliation

British Army



FOUNDED IN 1828

GLASNEVIN TRUST

INCORPORATING: DARDISTOWN GLASNEVIN
GOLDENBRIDGE NEWLANDS CROSS PALMERSTOWN

Glasnevin Trust - 1916 List

Initials (Grave Record)

GW

Forename (Grave Record)

GEORGE WILLIAM

Surname (Grave Record)

BARNETT

Date of Death (Grave Record)

27/04/1916

Affiliation

British Army



FOUNDED IN 1828

GLASNEVIN TRUST

INCORPORATING: DARDISTOWN GLASNEVIN
GOLDENBRIDGE NEWLANDS CROSS PALMERSTOWN

Glasnevin Trust - 1916 List

Initials (Grave Record)

H

Forename (Grave Record)

HAROLD

Surname (Grave Record)

BARRATT

Date of Death (Grave Record)

27/04/1916

Affiliation

British Army



FOUNDED IN 1828

GLASNEVIN TRUST

INCORPORATING: DARDISTOWN GLASNEVIN
GOLDENBRIDGE NEWLANDS CROSS PALMERSTOWN

Glasnevin Trust - 1916 List

Initials (Grave Record)

J

Forename (Grave Record)

JOHN

Surname (Grave Record)

BARRATT

Date of Death (Grave Record)

29/04/1916

Affiliation

British Army



FOUNDED IN 1828

GLASNEVIN TRUST

INCORPORATING: DARDISTOWN GLASNEVIN
GOLDENBRIDGE NEWLANDS CROSS PALMERSTOWN

Glasnevin Trust - 1916 List

Initials (Grave Record)

B

Forename (Grave Record)

BRIDGET

Surname (Grave Record)

BARRY

Date of Death (Grave Record)

29/04/1916

Affiliation

Civilian



FOUNDED IN 1828

GLASNEVIN TRUST

INCORPORATING: DARDISTOWN GLASNEVIN
GOLDENBRIDGE NEWLANDS CROSS PALMERSTOWN

Glasnevin Trust - 1916 List

Initials (Grave Record)

W

Forename (Grave Record)

WILLIAM

Surname (Grave Record)

BARTER

Date of Death (Grave Record)

26/04/1916

Affiliation

Civilian



FOUNDED IN 1828

GLASNEVIN TRUST

INCORPORATING: DARDISTOWN GLASNEVIN
GOLDENBRIDGE NEWLANDS CROSS PALMERSTOWN

Glasnevin Trust - 1916 List

Initials (Grave Record)

P

Forename (Grave Record)

PATRICK

Surname (Grave Record)

BEALIN

Date of Death (Grave Record)

29/04/1916

Affiliation

Civilian



FOUNDED IN 1828

GLASNEVIN TRUST

INCORPORATING: DARDISTOWN GLASNEVIN
GOLDENBRIDGE NEWLANDS CROSS PALMERSTOWN

Glasnevin Trust - 1916 List

Initials (Grave Record)

J

Forename (Grave Record)

JOHN

Surname (Grave Record)

BEIRNES

Date of Death (Grave Record)

29/04/1916

Affiliation

Civilian



FOUNDED IN 1828

GLASNEVIN TRUST

INCORPORATING: DARDISTOWN GLASNEVIN
GOLDENBRIDGE NEWLANDS CROSS PALMERSTOWN

Glasnevin Trust - 1916 List

Initials (Grave Record)

O

Forename (Grave Record)

OSCAR

Surname (Grave Record)

BENTLEY

Date of Death (Grave Record)

24/04/1916

Affiliation

British Army



FOUNDED IN 1828

GLASNEVIN TRUST

INCORPORATING: DARDISTOWN GLASNEVIN
GOLDENBRIDGE NEWLANDS CROSS PALMERSTOWN

Glasnevin Trust - 1916 List

Initials (Grave Record)

J

Forename (Grave Record)

JAMES

Surname (Grave Record)

BLAYNEY

Date of Death (Grave Record)

26/04/1916

Affiliation

Civilian



FOUNDED IN 1828

GLASNEVIN TRUST

INCORPORATING: DARDISTOWN GLASNEVIN
GOLDENBRIDGE NEWLANDS CROSS PALMERSTOWN

Glasnevin Trust - 1916 List

Initials (Grave Record)

J S

Forename (Grave Record)

JOHN SAMUEL

Surname (Grave Record)

BLISSETT

Date of Death (Grave Record)

26/04/1916

Affiliation

British Army



FOUNDED IN 1828

GLASNEVIN TRUST

INCORPORATING: DARDISTOWN GLASNEVIN
GOLDENBRIDGE NEWLANDS CROSS PALMERSTOWN

Glasnevin Trust - 1916 List

Initials (Grave Record)

J

Forename (Grave Record)

JAMES

Surname (Grave Record)

BLUNDELL

Date of Death (Grave Record)

02/05/1916

Affiliation

British Army



FOUNDED IN 1828

GLASNEVIN TRUST

INCORPORATING: DARDISTOWN GLASNEVIN
GOLDENBRIDGE NEWLANDS CROSS PALMERSTOWN

Glasnevin Trust - 1916 List

Initials (Grave Record)

H

Forename (Grave Record)

HENRY

Surname (Grave Record)

BOND

Date of Death (Grave Record)

25/04/1916

Affiliation

Civilian



FOUNDED IN 1828

GLASNEVIN TRUST

INCORPORATING: DARDISTOWN GLASNEVIN
GOLDENBRIDGE NEWLANDS CROSS PALMERSTOWN

Glasnevin Trust - 1916 List

Initials (Grave Record)

H

Forename (Grave Record)

HAROLD

Surname (Grave Record)

BOURNE

Date of Death (Grave Record)

29/04/1916

Affiliation

British Army



FOUNDED IN 1828

GLASNEVIN TRUST

INCORPORATING: DARDISTOWN GLASNEVIN
GOLDENBRIDGE NEWLANDS CROSS PALMERSTOWN

Glasnevin Trust - 1916 List

Initials (Grave Record)

J R

Forename (Grave Record)

JOHN REGINALD

Surname (Grave Record)

BOWCOTT

Date of Death (Grave Record)

29/04/1916

Affiliation

British Army



FOUNDED IN 1828

GLASNEVIN TRUST

INCORPORATING: DARDISTOWN GLASNEVIN
GOLDENBRIDGE NEWLANDS CROSS PALMERSTOWN

Glasnevin Trust - 1916 List

Initials (Grave Record)

J H

Forename (Grave Record)

JAMES HORACE

Surname (Grave Record)

BRADFORD

Date of Death (Grave Record)

05/05/1916

Affiliation

British Army



FOUNDED IN 1828

GLASNEVIN TRUST

INCORPORATING: DARDISTOWN GLASNEVIN
GOLDENBRIDGE NEWLANDS CROSS PALMERSTOWN

Glasnevin Trust - 1916 List

Initials (Grave Record)

J

Forename (Grave Record)

JAMES

Surname (Grave Record)

BRADY

Date of Death (Grave Record)

29/04/1916

Affiliation

Civilian



FOUNDED IN 1828

GLASNEVIN TRUST

INCORPORATING: DARDISTOWN GLASNEVIN
GOLDENBRIDGE NEWLANDS CROSS PALMERSTOWN

Glasnevin Trust - 1916 List

Initials (Grave Record)

J

Forename (Grave Record)

JOHN

Surname (Grave Record)

BRENNAN

Date of Death (Grave Record)

24/04/1916

Affiliation

British Army



FOUNDED IN 1828

GLASNEVIN TRUST

INCORPORATING: DARDISTOWN GLASNEVIN
GOLDENBRIDGE NEWLANDS CROSS PALMERSTOWN

Glasnevin Trust - 1916 List

Initials (Grave Record)

F A

Forename (Grave Record)

FRANCIS A

Surname (Grave Record)

BRENNAN

Date of Death (Grave Record)

24/04/1916

Affiliation

British Army



FOUNDED IN 1828

GLASNEVIN TRUST

INCORPORATING: DARDISTOWN GLASNEVIN
GOLDENBRIDGE NEWLANDS CROSS PALMERSTOWN

Glasnevin Trust - 1916 List

Initials (Grave Record)

M

Forename (Grave Record)

MALACHY

Surname (Grave Record)

BRENNAN

Date of Death (Grave Record)

28/04/1916

Affiliation

Civilian



FOUNDED IN 1828

GLASNEVIN TRUST

INCORPORATING: DARDISTOWN GLASNEVIN
GOLDENBRIDGE NEWLANDS CROSS PALMERSTOWN

Glasnevin Trust - 1916 List

Initials (Grave Record)

J

Forename (Grave Record)

JOHN

Surname (Grave Record)

BRENNAN

Date of Death (Grave Record)

28/04/1916

Affiliation

Civilian



FOUNDED IN 1828

GLASNEVIN TRUST

INCORPORATING: DARDISTOWN GLASNEVIN
GOLDENBRIDGE NEWLANDS CROSS PALMERSTOWN

Glasnevin Trust - 1916 List

Initials (Grave Record)

H

Forename (Grave Record)

HAROLD

Surname (Grave Record)

BRINDLEY

Date of Death (Grave Record)

28/04/1916

Affiliation

British Army



FOUNDED IN 1828

GLASNEVIN TRUST

INCORPORATING: DARDISTOWN GLASNEVIN
GOLDENBRIDGE NEWLANDS CROSS PALMERSTOWN

Glasnevin Trust - 1916 List

Initials (Grave Record)

P

Forename (Grave Record)

PATRICK

Surname (Grave Record)

BROSNAN

Date of Death (Grave Record)

25/04/1916

Affiliation

British Army



FOUNDED IN 1828

GLASNEVIN TRUST

INCORPORATING: DARDISTOWN GLASNEVIN
GOLDENBRIDGE NEWLANDS CROSS PALMERSTOWN

Glasnevin Trust - 1916 List

Initials (Grave Record)

G

Forename (Grave Record)

GEORGE

Surname (Grave Record)

BROWN

Date of Death (Grave Record)

27/04/1916

Affiliation

Civilian



FOUNDED IN 1828

GLASNEVIN TRUST

INCORPORATING: DARDISTOWN GLASNEVIN
GOLDENBRIDGE NEWLANDS CROSS PALMERSTOWN

Glasnevin Trust - 1916 List

Initials (Grave Record)

M B

Forename (Grave Record)

MONTAGUE BERNARD

Surname (Grave Record)

BROWNE

Date of Death (Grave Record)

30/04/1916

Affiliation

British Army



FOUNDED IN 1828

GLASNEVIN TRUST

INCORPORATING: DARDISTOWN GLASNEVIN
GOLDENBRIDGE NEWLANDS CROSS PALMERSTOWN

Glasnevin Trust - 1916 List

Initials (Grave Record)

F H

Forename (Grave Record)

FRANCIS HENRY

Surname (Grave Record)

BROWNING

Date of Death (Grave Record)

26/04/1916

Affiliation

Irish Association of Volunteer Training Corps



FOUNDED IN 1828

GLASNEVIN TRUST

INCORPORATING: DARDISTOWN GLASNEVIN
GOLDENBRIDGE NEWLANDS CROSS PALMERSTOWN

Glasnevin Trust - 1916 List

Initials (Grave Record)

J

Forename (Grave Record)

JULIA

Surname (Grave Record)

BRUNELL

Date of Death (Grave Record)

02/05/1916

Affiliation

Civilian



FOUNDED IN 1828

GLASNEVIN TRUST

INCORPORATING: DARDISTOWN GLASNEVIN
GOLDENBRIDGE NEWLANDS CROSS PALMERSTOWN

Glasnevin Trust - 1916 List

Initials (Grave Record)

M

Forename (Grave Record)

MARY

Surname (Grave Record)

BRUNSWICK

Date of Death (Grave Record)

28/04/1916

Affiliation

Civilian



FOUNDED IN 1828

GLASNEVIN TRUST

INCORPORATING: DARDISTOWN GLASNEVIN
GOLDENBRIDGE NEWLANDS CROSS PALMERSTOWN

Glasnevin Trust - 1916 List

Initials (Grave Record)

L

Forename (Grave Record)

LUCY

Surname (Grave Record)

BUCKLEY

Date of Death (Grave Record)

01/05/1916

Affiliation

Civilian



FOUNDED IN 1828

GLASNEVIN TRUST

INCORPORATING: DARDISTOWN GLASNEVIN
GOLDENBRIDGE NEWLANDS CROSS PALMERSTOWN

Glasnevin Trust - 1916 List

Initials (Grave Record)

W F

Forename (Grave Record)

WILLIAM FRANCIS

Surname (Grave Record)

BURKE

Date of Death (Grave Record)

25/04/1916

Affiliation

Irish Volunteers



FOUNDED IN 1828

GLASNEVIN TRUST

INCORPORATING: DARDISTOWN GLASNEVIN
GOLDENBRIDGE NEWLANDS CROSS PALMERSTOWN

Glasnevin Trust - 1916 List

Initials (Grave Record)

FWR

Forename (Grave Record)

FREDERICK WILLIAM ROBERT

Surname (Grave Record)

BURKE

Date of Death (Grave Record)

28/04/1916

Affiliation

British Army



FOUNDED IN 1828

GLASNEVIN TRUST

INCORPORATING: DARDISTOWN GLASNEVIN
GOLDENBRIDGE NEWLANDS CROSS PALMERSTOWN

Glasnevin Trust - 1916 List

Initials (Grave Record)

R

Forename (Grave Record)

RICHARD

Surname (Grave Record)

BUTLER

Date of Death (Grave Record)

25/04/1916

Affiliation

Civilian



FOUNDED IN 1828

GLASNEVIN TRUST

INCORPORATING: DARDISTOWN GLASNEVIN
GOLDENBRIDGE NEWLANDS CROSS PALMERSTOWN

Glasnevin Trust - 1916 List

Initials (Grave Record)

L

Forename (Grave Record)

LOUIS

Surname (Grave Record)

BYRNE

Date of Death (Grave Record)

24/04/1916

Affiliation

Irish Citizen Army



FOUNDED IN 1828

GLASNEVIN TRUST

INCORPORATING: DARDISTOWN GLASNEVIN
GOLDENBRIDGE NEWLANDS CROSS PALMERSTOWN

Glasnevin Trust - 1916 List

Initials (Grave Record)

J

Forename (Grave Record)

JOHN

Surname (Grave Record)

BYRNE

Date of Death (Grave Record)

25/04/1916

Affiliation

Civilian



FOUNDED IN 1828

GLASNEVIN TRUST

INCORPORATING: DARDISTOWN GLASNEVIN
GOLDENBRIDGE NEWLANDS CROSS PALMERSTOWN

Glasnevin Trust - 1916 List

Initials (Grave Record)

P

Forename (Grave Record)

PATRICK

Surname (Grave Record)

BYRNE

Date of Death (Grave Record)

26/04/1916

Affiliation

Civilian



FOUNDED IN 1828

GLASNEVIN TRUST

INCORPORATING: DARDISTOWN GLASNEVIN
GOLDENBRIDGE NEWLANDS CROSS PALMERSTOWN

Glasnevin Trust - 1916 List

Initials (Grave Record)

E

Forename (Grave Record)

EDWARD

Surname (Grave Record)

BYRNE

Date of Death (Grave Record)

26/04/1916

Affiliation

Civilian



FOUNDED IN 1828

GLASNEVIN TRUST

INCORPORATING: DARDISTOWN GLASNEVIN
GOLDENBRIDGE NEWLANDS CROSS PALMERSTOWN

Glasnevin Trust - 1916 List

Initials (Grave Record)

J

Forename (Grave Record)

JAMES

Surname (Grave Record)

BYRNE

Date of Death (Grave Record)

27/04/1916

Affiliation

Irish Volunteers



FOUNDED IN 1828

GLASNEVIN TRUST

INCORPORATING: DARDISTOWN GLASNEVIN
GOLDENBRIDGE NEWLANDS CROSS PALMERSTOWN

Glasnevin Trust - 1916 List

Initials (Grave Record)

A J

Forename (Grave Record)

ANDREW JAMES

Surname (Grave Record)

BYRNE

Date of Death (Grave Record)

27/04/1916

Affiliation

Irish Volunteers



FOUNDED IN 1828

GLASNEVIN TRUST

INCORPORATING: DARDISTOWN GLASNEVIN
GOLDENBRIDGE NEWLANDS CROSS PALMERSTOWN

Glasnevin Trust - 1916 List

Initials (Grave Record)

J

Forename (Grave Record)

JAMES

Surname (Grave Record)

BYRNE

Date of Death (Grave Record)

01/05/1916

Affiliation

British Army



FOUNDED IN 1828

GLASNEVIN TRUST

INCORPORATING: DARDISTOWN GLASNEVIN
GOLDENBRIDGE NEWLANDS CROSS PALMERSTOWN

Glasnevin Trust - 1916 List

Initials (Grave Record)

C

Forename (Grave Record)

CHRISTINA

Surname (Grave Record)

CAFFREY

Date of Death (Grave Record)

25/04/1916

Affiliation

Civilian



FOUNDED IN 1828

GLASNEVIN TRUST

INCORPORATING: DARDISTOWN GLASNEVIN
GOLDENBRIDGE NEWLANDS CROSS PALMERSTOWN

Glasnevin Trust - 1916 List

Initials (Grave Record)

GW

Forename (Grave Record)

GEORGE WILLIAM

Surname (Grave Record)

CAHILL

Date of Death (Grave Record)

Affiliation

Civilian



FOUNDED IN 1828

GLASNEVIN TRUST

INCORPORATING: DARDISTOWN GLASNEVIN
GOLDENBRIDGE NEWLANDS CROSS PALMERSTOWN

Glasnevin Trust - 1916 List

Initials (Grave Record)

A J

Forename (Grave Record)

ANNE JANE

Surname (Grave Record)

CALDWELL

Date of Death (Grave Record)

28/04/1916

Affiliation

Civilian



FOUNDED IN 1828

GLASNEVIN TRUST

INCORPORATING: DARDISTOWN GLASNEVIN
GOLDENBRIDGE NEWLANDS CROSS PALMERSTOWN

Glasnevin Trust - 1916 List

Initials (Grave Record)

J H

Forename (Grave Record)

JAMES HOWARD

Surname (Grave Record)

CALVERT

Date of Death (Grave Record)

24/04/1916

Affiliation

British Army



FOUNDED IN 1828

GLASNEVIN TRUST

INCORPORATING: DARDISTOWN GLASNEVIN
GOLDENBRIDGE NEWLANDS CROSS PALMERSTOWN

Glasnevin Trust - 1916 List

Initials (Grave Record)

M

Forename (Grave Record)

MICHAEL

Surname (Grave Record)

CARR

Date of Death (Grave Record)

24/04/1916

Affiliation

British Army



FOUNDED IN 1828

GLASNEVIN TRUST

INCORPORATING: DARDISTOWN GLASNEVIN
GOLDENBRIDGE NEWLANDS CROSS PALMERSTOWN

Glasnevin Trust - 1916 List

Initials (Grave Record)

W

Forename (Grave Record)

WILLIAM

Surname (Grave Record)

CARRICK

Date of Death (Grave Record)

Affiliation

Civilian



FOUNDED IN 1828

GLASNEVIN TRUST

INCORPORATING: DARDISTOWN GLASNEVIN
GOLDENBRIDGE NEWLANDS CROSS PALMERSTOWN

Glasnevin Trust - 1916 List

Initials (Grave Record)

C

Forename (Grave Record)

CHARLES

Surname (Grave Record)

CARRIGAN

Date of Death (Grave Record)

28/04/1916

Affiliation

Irish Volunteers



FOUNDED IN 1828

GLASNEVIN TRUST

INCORPORATING: DARDISTOWN GLASNEVIN
GOLDENBRIDGE NEWLANDS CROSS PALMERSTOWN

Glasnevin Trust - 1916 List

Initials (Grave Record)

JJ

Forename (Grave Record)

JAMES JOSEPH

Surname (Grave Record)

CARROLL

Date of Death (Grave Record)

28/04/1916

Affiliation

Civilian



FOUNDED IN 1828

GLASNEVIN TRUST

INCORPORATING: DARDISTOWN GLASNEVIN
GOLDENBRIDGE NEWLANDS CROSS PALMERSTOWN

Glasnevin Trust - 1916 List

Initials (Grave Record)

R

Forename (Grave Record)

ROGER

Surname (Grave Record)

CASEMENT

Date of Death (Grave Record)

03/08/1916

Affiliation

Irish Volunteers



FOUNDED IN 1828

GLASNEVIN TRUST

INCORPORATING: DARDISTOWN GLASNEVIN
GOLDENBRIDGE NEWLANDS CROSS PALMERSTOWN

Glasnevin Trust - 1916 List

Initials (Grave Record)

J

Forename (Grave Record)

JOSEPH

Surname (Grave Record)

CASEY

Date of Death (Grave Record)

25/04/1916

Affiliation

Civilian



FOUNDED IN 1828

GLASNEVIN TRUST

INCORPORATING: DARDISTOWN GLASNEVIN
GOLDENBRIDGE NEWLANDS CROSS PALMERSTOWN

Glasnevin Trust - 1916 List

Initials (Grave Record)

J

Forename (Grave Record)

JAMES

Surname (Grave Record)

CASHMAN

Date of Death (Grave Record)

28/04/1916

Affiliation

Civilian



FOUNDED IN 1828

GLASNEVIN TRUST

INCORPORATING: DARDISTOWN GLASNEVIN
GOLDENBRIDGE NEWLANDS CROSS PALMERSTOWN

Glasnevin Trust - 1916 List

Initials (Grave Record)

C

Forename (Grave Record)

CHRISTOPHER

Surname (Grave Record)

CATHCART

Date of Death (Grave Record)

24/04/1916

Affiliation

Civilian



FOUNDED IN 1828

GLASNEVIN TRUST

INCORPORATING: DARDISTOWN GLASNEVIN
GOLDENBRIDGE NEWLANDS CROSS PALMERSTOWN

Glasnevin Trust - 1916 List

Initials (Grave Record)

J

Forename (Grave Record)

JAMES

Surname (Grave Record)

CAVANAGH

Date of Death (Grave Record)

26/04/1916

Affiliation

British Army



FOUNDED IN 1828

GLASNEVIN TRUST

INCORPORATING: DARDISTOWN GLASNEVIN
GOLDENBRIDGE NEWLANDS CROSS PALMERSTOWN

Glasnevin Trust - 1916 List

Initials (Grave Record)

E

Forename (Grave Record)

EAMONN

Surname (Grave Record)

CEANNT

Date of Death (Grave Record)

08/05/1916

Affiliation

Irish Volunteers



FOUNDED IN 1828

GLASNEVIN TRUST

INCORPORATING: DARDISTOWN GLASNEVIN
GOLDENBRIDGE NEWLANDS CROSS PALMERSTOWN

Glasnevin Trust - 1916 List

Initials (Grave Record)

T H

Forename (Grave Record)

THOMAS HENRY

Surname (Grave Record)

CHAPMAN

Date of Death (Grave Record)

27/04/1916

Affiliation

British Army



FOUNDED IN 1828

GLASNEVIN TRUST

INCORPORATING: DARDISTOWN GLASNEVIN
GOLDENBRIDGE NEWLANDS CROSS PALMERSTOWN

Glasnevin Trust - 1916 List

Initials (Grave Record)

J

Forename (Grave Record)

JAMES

Surname (Grave Record)

CHICK

Date of Death (Grave Record)

29/04/1916

Affiliation

British Army



FOUNDED IN 1828

GLASNEVIN TRUST

INCORPORATING: DARDISTOWN GLASNEVIN
GOLDENBRIDGE NEWLANDS CROSS PALMERSTOWN

Glasnevin Trust - 1916 List

Initials (Grave Record)

J

Forename (Grave Record)

JOSEPH

Surname (Grave Record)

CLARKE

Date of Death (Grave Record)

26/04/1916

Affiliation

Civilian



FOUNDED IN 1828

GLASNEVIN TRUST

INCORPORATING: DARDISTOWN GLASNEVIN
GOLDENBRIDGE NEWLANDS CROSS PALMERSTOWN

Glasnevin Trust - 1916 List

Initials (Grave Record)

P

Forename (Grave Record)

PHILIP

Surname (Grave Record)

CLARKE

Date of Death (Grave Record)

26/04/1916

Affiliation

Irish Citizen Army



FOUNDED IN 1828

GLASNEVIN TRUST

INCORPORATING: DARDISTOWN GLASNEVIN
GOLDENBRIDGE NEWLANDS CROSS PALMERSTOWN

Glasnevin Trust - 1916 List

Initials (Grave Record)

R

Forename (Grave Record)

RICHARD

Surname (Grave Record)

CLARKE

Date of Death (Grave Record)

29/04/1916

Affiliation

Civilian



FOUNDED IN 1828

GLASNEVIN TRUST

INCORPORATING: DARDISTOWN GLASNEVIN
GOLDENBRIDGE NEWLANDS CROSS PALMERSTOWN

Glasnevin Trust - 1916 List

Initials (Grave Record)

T

Forename (Grave Record)

TOM

Surname (Grave Record)

CLARKE

Date of Death (Grave Record)

03/05/1916

Affiliation

Irish Volunteers



FOUNDED IN 1828

GLASNEVIN TRUST

INCORPORATING: DARDISTOWN GLASNEVIN
GOLDENBRIDGE NEWLANDS CROSS PALMERSTOWN

Glasnevin Trust - 1916 List

Initials (Grave Record)

J

Forename (Grave Record)

JAMES

Surname (Grave Record)

CLEARY

Date of Death (Grave Record)

28/04/1916

Affiliation

Royal Irish Constabulary



FOUNDED IN 1828

GLASNEVIN TRUST

INCORPORATING: DARDISTOWN GLASNEVIN
GOLDENBRIDGE NEWLANDS CROSS PALMERSTOWN

Glasnevin Trust - 1916 List

Initials (Grave Record)

R F

Forename (Grave Record)

REGINALD FRANCIS

Surname (Grave Record)

CLERY

Date of Death (Grave Record)

24/04/1916

Affiliation

Irish Association of Volunteer Training Corps



FOUNDED IN 1828

GLASNEVIN TRUST

INCORPORATING: DARDISTOWN GLASNEVIN
GOLDENBRIDGE NEWLANDS CROSS PALMERSTOWN

Glasnevin Trust - 1916 List

Initials (Grave Record)

JJ

Forename (Grave Record)

JAMES JOSEPH

Surname (Grave Record)

COADE

Date of Death (Grave Record)

25/04/1916

Affiliation

Civilian



FOUNDED IN 1828

GLASNEVIN TRUST

INCORPORATING: DARDISTOWN GLASNEVIN
GOLDENBRIDGE NEWLANDS CROSS PALMERSTOWN

Glasnevin Trust - 1916 List

Initials (Grave Record)

A E

Forename (Grave Record)

ARTHUR ELIAS

Surname (Grave Record)

COBBOLD

Date of Death (Grave Record)

29/04/1916

Affiliation

British Army



FOUNDED IN 1828

GLASNEVIN TRUST

INCORPORATING: DARDISTOWN GLASNEVIN
GOLDENBRIDGE NEWLANDS CROSS PALMERSTOWN

Glasnevin Trust - 1916 List

Initials (Grave Record)

C

Forename (Grave Record)

CORNELIUS

Surname (Grave Record)

COLBERT

Date of Death (Grave Record)

08/05/1916

Affiliation

Irish Volunteers



FOUNDED IN 1828

GLASNEVIN TRUST

INCORPORATING: DARDISTOWN GLASNEVIN
GOLDENBRIDGE NEWLANDS CROSS PALMERSTOWN

Glasnevin Trust - 1916 List

Initials (Grave Record)

M A

Forename (Grave Record)

MARY ANNE

Surname (Grave Record)

COLE

Date of Death (Grave Record)

29/04/1916

Affiliation

Civilian



FOUNDED IN 1828

GLASNEVIN TRUST

INCORPORATING: DARDISTOWN GLASNEVIN
GOLDENBRIDGE NEWLANDS CROSS PALMERSTOWN

Glasnevin Trust - 1916 List

Initials (Grave Record)

T A

Forename (Grave Record)

THOMAS ALBERT

Surname (Grave Record)

COLLINS

Date of Death (Grave Record)

29/04/1916

Affiliation

British Army



FOUNDED IN 1828

GLASNEVIN TRUST

INCORPORATING: DARDISTOWN GLASNEVIN
GOLDENBRIDGE NEWLANDS CROSS PALMERSTOWN

Glasnevin Trust - 1916 List

Initials (Grave Record)

J

Forename (Grave Record)

JULIA

Surname (Grave Record)

CONDRON

Date of Death (Grave Record)

28/04/1916

Affiliation

Civilian



FOUNDED IN 1828

GLASNEVIN TRUST

INCORPORATING: DARDISTOWN GLASNEVIN
GOLDENBRIDGE NEWLANDS CROSS PALMERSTOWN

Glasnevin Trust - 1916 List

Initials (Grave Record)

J

Forename (Grave Record)

JOHN

Surname (Grave Record)

CONNOLLY

Date of Death (Grave Record)

24/04/1916

Affiliation

Irish Citizen Army



FOUNDED IN 1828

GLASNEVIN TRUST

INCORPORATING: DARDISTOWN GLASNEVIN
GOLDENBRIDGE NEWLANDS CROSS PALMERSTOWN

Glasnevin Trust - 1916 List

Initials (Grave Record)

W

Forename (Grave Record)

WILLIAM

Surname (Grave Record)

CONNOLLY

Date of Death (Grave Record)

26/04/1916

Affiliation

Civilian



FOUNDED IN 1828

GLASNEVIN TRUST

INCORPORATING: DARDISTOWN GLASNEVIN
GOLDENBRIDGE NEWLANDS CROSS PALMERSTOWN

Glasnevin Trust - 1916 List

Initials (Grave Record)

P

Forename (Grave Record)

PETER

Surname (Grave Record)

CONNOLLY

Date of Death (Grave Record)

29/04/1916

Affiliation

Civilian



FOUNDED IN 1828

GLASNEVIN TRUST

INCORPORATING: DARDISTOWN GLASNEVIN
GOLDENBRIDGE NEWLANDS CROSS PALMERSTOWN

Glasnevin Trust - 1916 List

Initials (Grave Record)

J

Forename (Grave Record)

JAMES

Surname (Grave Record)

CONNOLLY

Date of Death (Grave Record)

12/05/1916

Affiliation

Irish Citizen Army



FOUNDED IN 1828

GLASNEVIN TRUST

INCORPORATING: DARDISTOWN GLASNEVIN
GOLDENBRIDGE NEWLANDS CROSS PALMERSTOWN

Glasnevin Trust - 1916 List

Initials (Grave Record)

M

Forename (Grave Record)

MARY

Surname (Grave Record)

CONNOLLY

Date of Death (Grave Record)

14/05/1916

Affiliation

Civilian



FOUNDED IN 1828

GLASNEVIN TRUST

INCORPORATING: DARDISTOWN GLASNEVIN
GOLDENBRIDGE NEWLANDS CROSS PALMERSTOWN

Glasnevin Trust - 1916 List

Initials (Grave Record)

C

Forename (Grave Record)

CHRISTOPHER

Surname (Grave Record)

CONNOR

Date of Death (Grave Record)

01/05/1916

Affiliation

Civilian



FOUNDED IN 1828

GLASNEVIN TRUST

INCORPORATING: DARDISTOWN GLASNEVIN
GOLDENBRIDGE NEWLANDS CROSS PALMERSTOWN

Glasnevin Trust - 1916 List

Initials (Grave Record)

J

Forename (Grave Record)

JOHN

Surname (Grave Record)

COOKE

Date of Death (Grave Record)

30/04/1916

Affiliation

Civilian



FOUNDED IN 1828

GLASNEVIN TRUST

INCORPORATING: DARDISTOWN GLASNEVIN
GOLDENBRIDGE NEWLANDS CROSS PALMERSTOWN

Glasnevin Trust - 1916 List

Initials (Grave Record)

Forename (Grave Record)

Surname (Grave Record)

Date of Death (Grave Record)

Affiliation



FOUNDED IN 1828

GLASNEVIN TRUST

INCORPORATING: DARDISTOWN GLASNEVIN
GOLDENBRIDGE NEWLANDS CROSS PALMERSTOWN

Glasnevin Trust - 1916 List

Initials (Grave Record)

J

Forename (Grave Record)

JAMES

Surname (Grave Record)

CORCORAN

Date of Death (Grave Record)

26/04/1916

Affiliation

Irish Citizen Army



FOUNDED IN 1828

GLASNEVIN TRUST

INCORPORATING: DARDISTOWN GLASNEVIN
GOLDENBRIDGE NEWLANDS CROSS PALMERSTOWN

Glasnevin Trust - 1916 List

Initials (Grave Record)

H J

Forename (Grave Record)

HERBERT JOHN

Surname (Grave Record)

CORDWELL

Date of Death (Grave Record)

24/04/1916

Affiliation

British Army



FOUNDED IN 1828

GLASNEVIN TRUST

INCORPORATING: DARDISTOWN GLASNEVIN
GOLDENBRIDGE NEWLANDS CROSS PALMERSTOWN

Glasnevin Trust - 1916 List

Initials (Grave Record)

J H

Forename (Grave Record)

JAMES HAMLET

Surname (Grave Record)

CORNWELL

Date of Death (Grave Record)

02/05/1916

Affiliation

British Army



FOUNDED IN 1828

GLASNEVIN TRUST

INCORPORATING: DARDISTOWN GLASNEVIN
GOLDENBRIDGE NEWLANDS CROSS PALMERSTOWN

Glasnevin Trust - 1916 List

Initials (Grave Record)

M A

Forename (Grave Record)

MARY ANNE

Surname (Grave Record)

CORRIGAN

Date of Death (Grave Record)

29/04/1916

Affiliation

Civilian



FOUNDED IN 1828

GLASNEVIN TRUST

INCORPORATING: DARDISTOWN GLASNEVIN
GOLDENBRIDGE NEWLANDS CROSS PALMERSTOWN

Glasnevin Trust - 1916 List

Initials (Grave Record)

E

Forename (Grave Record)

EDWARD

Surname (Grave Record)

COSGRAVE

Date of Death (Grave Record)

25/04/1916

Affiliation

Irish Citizen Army



FOUNDED IN 1828

GLASNEVIN TRUST

INCORPORATING: DARDISTOWN GLASNEVIN
GOLDENBRIDGE NEWLANDS CROSS PALMERSTOWN

Glasnevin Trust - 1916 List

Initials (Grave Record)

E J

Forename (Grave Record)

EDWARD JOSEPH

Surname (Grave Record)

COSTELLO

Date of Death (Grave Record)

25/04/1916

Affiliation

Irish Volunteers



FOUNDED IN 1828

GLASNEVIN TRUST

INCORPORATING: DARDISTOWN GLASNEVIN
GOLDENBRIDGE NEWLANDS CROSS PALMERSTOWN

Glasnevin Trust - 1916 List

Initials (Grave Record)

J

Forename (Grave Record)

JOHN

Surname (Grave Record)

COSTELLO

Date of Death (Grave Record)

26/04/1916

Affiliation

Civilian



FOUNDED IN 1828

GLASNEVIN TRUST

INCORPORATING: DARDISTOWN GLASNEVIN
GOLDENBRIDGE NEWLANDS CROSS PALMERSTOWN

Glasnevin Trust - 1916 List

Initials (Grave Record)

J

Forename (Grave Record)

JOHN

Surname (Grave Record)

COSTELLO

Date of Death (Grave Record)

26/04/1916

Affiliation

Irish Volunteers



FOUNDED IN 1828

GLASNEVIN TRUST

INCORPORATING: DARDISTOWN GLASNEVIN
GOLDENBRIDGE NEWLANDS CROSS PALMERSTOWN

Glasnevin Trust - 1916 List

Initials (Grave Record)

J

Forename (Grave Record)

JANE

Surname (Grave Record)

COSTELLO

Date of Death (Grave Record)

27/04/1916

Affiliation

Civilian



FOUNDED IN 1828

GLASNEVIN TRUST

INCORPORATING: DARDISTOWN GLASNEVIN
GOLDENBRIDGE NEWLANDS CROSS PALMERSTOWN

Glasnevin Trust - 1916 List

Initials (Grave Record)

T

Forename (Grave Record)

THOMAS

Surname (Grave Record)

COUGHLAN

Date of Death (Grave Record)

28/04/1916

Affiliation

Civilian



FOUNDED IN 1828

GLASNEVIN TRUST

INCORPORATING: DARDISTOWN GLASNEVIN
GOLDENBRIDGE NEWLANDS CROSS PALMERSTOWN

Glasnevin Trust - 1916 List

Initials (Grave Record)

C

Forename (Grave Record)

CLEMENT

Surname (Grave Record)

COURTNEY

Date of Death (Grave Record)

26/04/1916

Affiliation

Civilian



FOUNDED IN 1828

GLASNEVIN TRUST

INCORPORATING: DARDISTOWN GLASNEVIN
GOLDENBRIDGE NEWLANDS CROSS PALMERSTOWN

Glasnevin Trust - 1916 List

Initials (Grave Record)

T K

Forename (Grave Record)

THOMAS KEARSE

Surname (Grave Record)

COWLEY

Date of Death (Grave Record)

28/04/1916

Affiliation

Civilian



FOUNDED IN 1828

GLASNEVIN TRUST

INCORPORATING: DARDISTOWN GLASNEVIN
GOLDENBRIDGE NEWLANDS CROSS PALMERSTOWN

Glasnevin Trust - 1916 List

Initials (Grave Record)

R

Forename (Grave Record)

RICHARD

Surname (Grave Record)

COXON

Date of Death (Grave Record)

26/04/1916

Affiliation

British Army



FOUNDED IN 1828

GLASNEVIN TRUST

INCORPORATING: DARDISTOWN GLASNEVIN
GOLDENBRIDGE NEWLANDS CROSS PALMERSTOWN

Glasnevin Trust - 1916 List

Initials (Grave Record)

Forename (Grave Record)

Surname (Grave Record)

Date of Death (Grave Record)

Affiliation



FOUNDED IN 1828

GLASNEVIN TRUST

INCORPORATING: DARDISTOWN GLASNEVIN
GOLDENBRIDGE NEWLANDS CROSS PALMERSTOWN

Glasnevin Trust - 1916 List

Initials (Grave Record)

H

Forename (Grave Record)

HENRY

Surname (Grave Record)

COYLE

Date of Death (Grave Record)

29/04/1916

Affiliation

Irish Volunteers



FOUNDED IN 1828

GLASNEVIN TRUST

INCORPORATING: DARDISTOWN GLASNEVIN
GOLDENBRIDGE NEWLANDS CROSS PALMERSTOWN

Glasnevin Trust - 1916 List

Initials (Grave Record)

J

Forename (Grave Record)

JOHN

Surname (Grave Record)

COYLE

Date of Death (Grave Record)

30/04/1916

Affiliation

British Army



FOUNDED IN 1828

GLASNEVIN TRUST

INCORPORATING: DARDISTOWN GLASNEVIN
GOLDENBRIDGE NEWLANDS CROSS PALMERSTOWN

Glasnevin Trust - 1916 List

Initials (Grave Record)

J

Forename (Grave Record)

JULIA

Surname (Grave Record)

CRAWFORD

Date of Death (Grave Record)

28/04/1916

Affiliation

Civilian



FOUNDED IN 1828

GLASNEVIN TRUST

INCORPORATING: DARDISTOWN GLASNEVIN
GOLDENBRIDGE NEWLANDS CROSS PALMERSTOWN

Glasnevin Trust - 1916 List

Initials (Grave Record)

J

Forename (Grave Record)

JOHN

Surname (Grave Record)

CREAVEN

Date of Death (Grave Record)

Affiliation

Civilian



FOUNDED IN 1828

GLASNEVIN TRUST

INCORPORATING: DARDISTOWN GLASNEVIN
GOLDENBRIDGE NEWLANDS CROSS PALMERSTOWN

Glasnevin Trust - 1916 List

Initials (Grave Record)

J

Forename (Grave Record)

JOHN

Surname (Grave Record)

CRENIGAN

Date of Death (Grave Record)

28/04/1916

Affiliation

Irish Volunteers



FOUNDED IN 1828

GLASNEVIN TRUST

INCORPORATING: DARDISTOWN GLASNEVIN
GOLDENBRIDGE NEWLANDS CROSS PALMERSTOWN

Glasnevin Trust - 1916 List

Initials (Grave Record)

C L

Forename (Grave Record)

CHARLES LOVE

Surname (Grave Record)

CROCKETT

Date of Death (Grave Record)

28/04/1916

Affiliation

British Army



FOUNDED IN 1828

GLASNEVIN TRUST

INCORPORATING: DARDISTOWN GLASNEVIN
GOLDENBRIDGE NEWLANDS CROSS PALMERSTOWN

Glasnevin Trust - 1916 List

Initials (Grave Record)

J

Forename (Grave Record)

JOHN

Surname (Grave Record)

CROMIEN

Date of Death (Grave Record)

26/04/1916

Affiliation

Irish Volunteers



FOUNDED IN 1828

GLASNEVIN TRUST

INCORPORATING: DARDISTOWN GLASNEVIN
GOLDENBRIDGE NEWLANDS CROSS PALMERSTOWN

Glasnevin Trust - 1916 List

Initials (Grave Record)

J

Forename (Grave Record)

JOSEPH

Surname (Grave Record)

CULLEN

Date of Death (Grave Record)

25/04/1916

Affiliation

British Army



FOUNDED IN 1828

GLASNEVIN TRUST

INCORPORATING: DARDISTOWN GLASNEVIN
GOLDENBRIDGE NEWLANDS CROSS PALMERSTOWN

Glasnevin Trust - 1916 List

Initials (Grave Record)

J

Forename (Grave Record)

JAMES

Surname (Grave Record)

CUNNINGHAM

Date of Death (Grave Record)

26/04/1916

Affiliation

Civilian



FOUNDED IN 1828

GLASNEVIN TRUST

INCORPORATING: DARDISTOWN GLASNEVIN
GOLDENBRIDGE NEWLANDS CROSS PALMERSTOWN

Glasnevin Trust - 1916 List

Initials (Grave Record)

M

Forename (Grave Record)

MARY

Surname (Grave Record)

CUNNINGHAM

Date of Death (Grave Record)

01/05/1916

Affiliation

Civilian



FOUNDED IN 1828

GLASNEVIN TRUST

INCORPORATING: DARDISTOWN GLASNEVIN
GOLDENBRIDGE NEWLANDS CROSS PALMERSTOWN

Glasnevin Trust - 1916 List

Initials (Grave Record)

A

Forename (Grave Record)

ANDREW (CHRISTOPHER)

Surname (Grave Record)

CUNNINGHAM

Date of Death (Grave Record)

01/05/1916

Affiliation

Civilian



FOUNDED IN 1828

GLASNEVIN TRUST

INCORPORATING: DARDISTOWN GLASNEVIN
GOLDENBRIDGE NEWLANDS CROSS PALMERSTOWN

Glasnevin Trust - 1916 List

Initials (Grave Record)

F

Forename (Grave Record)

FRANCIS

Surname (Grave Record)

CURLEY

Date of Death (Grave Record)

29/04/1916

Affiliation

Civilian



FOUNDED IN 1828

GLASNEVIN TRUST

INCORPORATING: DARDISTOWN GLASNEVIN
GOLDENBRIDGE NEWLANDS CROSS PALMERSTOWN

Glasnevin Trust - 1916 List

Initials (Grave Record)

H C

Forename (Grave Record)

HAROLD CHARLES

Surname (Grave Record)

DAFFEN

Date of Death (Grave Record)

26/04/1916

Affiliation

British Army



FOUNDED IN 1828

GLASNEVIN TRUST

INCORPORATING: DARDISTOWN GLASNEVIN
GOLDENBRIDGE NEWLANDS CROSS PALMERSTOWN

Glasnevin Trust - 1916 List

Initials (Grave Record)

M

Forename (Grave Record)

MARGARET

Surname (Grave Record)

DALY

Date of Death (Grave Record)

28/04/1916

Affiliation

Civilian



FOUNDED IN 1828

GLASNEVIN TRUST

INCORPORATING: DARDISTOWN GLASNEVIN
GOLDENBRIDGE NEWLANDS CROSS PALMERSTOWN

Glasnevin Trust - 1916 List

Initials (Grave Record)

E

Forename (Grave Record)

EDWARD

Surname (Grave Record)

DALY

Date of Death (Grave Record)

04/05/1916

Affiliation

Irish Volunteers



FOUNDED IN 1828

GLASNEVIN TRUST

INCORPORATING: DARDISTOWN GLASNEVIN
GOLDENBRIDGE NEWLANDS CROSS PALMERSTOWN

Glasnevin Trust - 1916 List

Initials (Grave Record)

C

Forename (Grave Record)

CHARLES

Surname (Grave Record)

DARCY

Date of Death (Grave Record)

24/04/1916

Affiliation

Irish Citizen Army



FOUNDED IN 1828

GLASNEVIN TRUST

INCORPORATING: DARDISTOWN GLASNEVIN
GOLDENBRIDGE NEWLANDS CROSS PALMERSTOWN

Glasnevin Trust - 1916 List

Initials (Grave Record)

E

Forename (Grave Record)

ERNEST

Surname (Grave Record)

DAVENPORT

Date of Death (Grave Record)

28/05/1916

Affiliation

British Army



FOUNDED IN 1828

GLASNEVIN TRUST

INCORPORATING: DARDISTOWN GLASNEVIN
GOLDENBRIDGE NEWLANDS CROSS PALMERSTOWN

Glasnevin Trust - 1916 List

Initials (Grave Record)

C

Forename (Grave Record)

CATHERINE

Surname (Grave Record)

DAVIS

Date of Death (Grave Record)

02/05/1916

Affiliation

Civilian



FOUNDED IN 1828

GLASNEVIN TRUST

INCORPORATING: DARDISTOWN GLASNEVIN
GOLDENBRIDGE NEWLANDS CROSS PALMERSTOWN

Glasnevin Trust - 1916 List

Initials (Grave Record)

J

Forename (Grave Record)

JOHN

Surname (Grave Record)

DAWSON

Date of Death (Grave Record)

28/04/1916

Affiliation

Civilian



FOUNDED IN 1828

GLASNEVIN TRUST

INCORPORATING: DARDISTOWN GLASNEVIN
GOLDENBRIDGE NEWLANDS CROSS PALMERSTOWN

Glasnevin Trust - 1916 List

Initials (Grave Record)

P

Forename (Grave Record)

PATRICK

Surname (Grave Record)

DERRICK

Date of Death (Grave Record)

28/04/1916

Affiliation

Irish Volunteers



FOUNDED IN 1828

GLASNEVIN TRUST

INCORPORATING: DARDISTOWN GLASNEVIN
GOLDENBRIDGE NEWLANDS CROSS PALMERSTOWN

Glasnevin Trust - 1916 List

Initials (Grave Record)

H

Forename (Grave Record)

HARRY

Surname (Grave Record)

DICKINSON

Date of Death (Grave Record)

12/05/1916

Affiliation

British Army



FOUNDED IN 1828

GLASNEVIN TRUST

INCORPORATING: DARDISTOWN GLASNEVIN
GOLDENBRIDGE NEWLANDS CROSS PALMERSTOWN

Glasnevin Trust - 1916 List

Initials (Grave Record)

T

Forename (Grave Record)

THOMAS

Surname (Grave Record)

DICKSON

Date of Death (Grave Record)

26/04/1916

Affiliation

Civilian



FOUNDED IN 1828

GLASNEVIN TRUST

INCORPORATING: DARDISTOWN GLASNEVIN
GOLDENBRIDGE NEWLANDS CROSS PALMERSTOWN

Glasnevin Trust - 1916 List

Initials (Grave Record)

F C

Forename (Grave Record)

FREDERICK CHRISTIAN

Surname (Grave Record)

DIETRICHSEN

Date of Death (Grave Record)

25/04/1916

Affiliation

British Army



FOUNDED IN 1828

GLASNEVIN TRUST

INCORPORATING: DARDISTOWN GLASNEVIN
GOLDENBRIDGE NEWLANDS CROSS PALMERSTOWN

Glasnevin Trust - 1916 List

Initials (Grave Record)

P

Forename (Grave Record)

PATRICK

Surname (Grave Record)

DIGNAM

Date of Death (Grave Record)

29/04/1916

Affiliation

Civilian



FOUNDED IN 1828

GLASNEVIN TRUST

INCORPORATING: DARDISTOWN GLASNEVIN
GOLDENBRIDGE NEWLANDS CROSS PALMERSTOWN

Glasnevin Trust - 1916 List

Initials (Grave Record)

R

Forename (Grave Record)

ROBERT

Surname (Grave Record)

DILLON

Date of Death (Grave Record)

29/04/1916

Affiliation

Civilian



FOUNDED IN 1828

GLASNEVIN TRUST

INCORPORATING: DARDISTOWN GLASNEVIN
GOLDENBRIDGE NEWLANDS CROSS PALMERSTOWN

Glasnevin Trust - 1916 List

Initials (Grave Record)

H C

Forename (Grave Record)

HENRY CHARLES

Surname (Grave Record)

DIXEY

Date of Death (Grave Record)

27/04/1916

Affiliation

British Army



FOUNDED IN 1828

GLASNEVIN TRUST

INCORPORATING: DARDISTOWN GLASNEVIN
GOLDENBRIDGE NEWLANDS CROSS PALMERSTOWN

Glasnevin Trust - 1916 List

Initials (Grave Record)

CT

Forename (Grave Record)

CHARLIETHOMAS

Surname (Grave Record)

DIXON

Date of Death (Grave Record)

26/04/1916

Affiliation

British Army



FOUNDED IN 1828

GLASNEVIN TRUST

INCORPORATING: DARDISTOWN GLASNEVIN
GOLDENBRIDGE NEWLANDS CROSS PALMERSTOWN

Glasnevin Trust - 1916 List

Initials (Grave Record)

C E

Forename (Grave Record)

CECIL EUSTACE

Surname (Grave Record)

DOCKERAY

Date of Death (Grave Record)

29/04/1916

Affiliation

Civilian



FOUNDED IN 1828

GLASNEVIN TRUST

INCORPORATING: DARDISTOWN GLASNEVIN
GOLDENBRIDGE NEWLANDS CROSS PALMERSTOWN

Glasnevin Trust - 1916 List

Initials (Grave Record)

B

Forename (Grave Record)

BRENDAN

Surname (Grave Record)

DONLAN

Date of Death (Grave Record)

24/04/1916

Affiliation

Irish Volunteers



FOUNDED IN 1828

GLASNEVIN TRUST

INCORPORATING: DARDISTOWN GLASNEVIN
GOLDENBRIDGE NEWLANDS CROSS PALMERSTOWN

Glasnevin Trust - 1916 List

Initials (Grave Record)

J

Forename (Grave Record)

JOHN

Surname (Grave Record)

DONNELLY

Date of Death (Grave Record)

25/04/1916

Affiliation

Civilian



FOUNDED IN 1828

GLASNEVIN TRUST

INCORPORATING: DARDISTOWN GLASNEVIN
GOLDENBRIDGE NEWLANDS CROSS PALMERSTOWN

Glasnevin Trust - 1916 List

Initials (Grave Record)

T

Forename (Grave Record)

THOMAS

Surname (Grave Record)

DONNELLY

Date of Death (Grave Record)

28/04/1916

Affiliation

Civilian



FOUNDED IN 1828

GLASNEVIN TRUST

INCORPORATING: DARDISTOWN GLASNEVIN
GOLDENBRIDGE NEWLANDS CROSS PALMERSTOWN

Glasnevin Trust - 1916 List

Initials (Grave Record)

DT

Forename (Grave Record)

DOMINICK THOMAS

Surname (Grave Record)

DONOHUE

Date of Death (Grave Record)

27/04/1916

Affiliation

Civilian



FOUNDED IN 1828

GLASNEVIN TRUST

INCORPORATING: DARDISTOWN GLASNEVIN
GOLDENBRIDGE NEWLANDS CROSS PALMERSTOWN

Glasnevin Trust - 1916 List

Initials (Grave Record)

J

Forename (Grave Record)

JOSEPH

Surname (Grave Record)

DONOHUE

Date of Death (Grave Record)

27/04/1916

Affiliation

Civilian



FOUNDED IN 1828

GLASNEVIN TRUST

INCORPORATING: DARDISTOWN GLASNEVIN
GOLDENBRIDGE NEWLANDS CROSS PALMERSTOWN

Glasnevin Trust - 1916 List

Initials (Grave Record)

J

Forename (Grave Record)

JAMES

Surname (Grave Record)

DOOLEY

Date of Death (Grave Record)

08/05/1916

Affiliation

British Army



FOUNDED IN 1828

GLASNEVIN TRUST

INCORPORATING: DARDISTOWN GLASNEVIN
GOLDENBRIDGE NEWLANDS CROSS PALMERSTOWN

Glasnevin Trust - 1916 List

Initials (Grave Record)

D

Forename (Grave Record)

DENIS

Surname (Grave Record)

DORGAN

Date of Death (Grave Record)

27/04/1916

Affiliation

Civilian



FOUNDED IN 1828

GLASNEVIN TRUST

INCORPORATING: DARDISTOWN GLASNEVIN
GOLDENBRIDGE NEWLANDS CROSS PALMERSTOWN

Glasnevin Trust - 1916 List

Initials (Grave Record)

M

Forename (Grave Record)

MOSES

Surname (Grave Record)

DOYLE

Date of Death (Grave Record)

24/04/1916

Affiliation

Civilian



FOUNDED IN 1828

GLASNEVIN TRUST

INCORPORATING: DARDISTOWN GLASNEVIN
GOLDENBRIDGE NEWLANDS CROSS PALMERSTOWN

Glasnevin Trust - 1916 List

Initials (Grave Record)

J

Forename (Grave Record)

JOHN

Surname (Grave Record)

DOYLE

Date of Death (Grave Record)

26/04/1916

Affiliation

Fianna Éireann



FOUNDED IN 1828

GLASNEVIN TRUST

INCORPORATING: DARDISTOWN GLASNEVIN
GOLDENBRIDGE NEWLANDS CROSS PALMERSTOWN

Glasnevin Trust - 1916 List

Initials (Grave Record)

P

Forename (Grave Record)

PATRICK

Surname (Grave Record)

DOYLE

Date of Death (Grave Record)

26/04/1916

Affiliation

Irish Volunteers



FOUNDED IN 1828

GLASNEVIN TRUST

INCORPORATING: DARDISTOWN GLASNEVIN
GOLDENBRIDGE NEWLANDS CROSS PALMERSTOWN

Glasnevin Trust - 1916 List

Initials (Grave Record)

J

Forename (Grave Record)

JOHN

Surname (Grave Record)

DOYLE

Date of Death (Grave Record)

28/04/1916

Affiliation

Civilian



FOUNDED IN 1828

GLASNEVIN TRUST

INCORPORATING: DARDISTOWN GLASNEVIN
GOLDENBRIDGE NEWLANDS CROSS PALMERSTOWN

Glasnevin Trust - 1916 List

Initials (Grave Record)

S P

Forename (Grave Record)

STEPHEN PATRICK

Surname (Grave Record)

DOYLE

Date of Death (Grave Record)

29/04/1916

Affiliation

Civilian



FOUNDED IN 1828

GLASNEVIN TRUST

INCORPORATING: DARDISTOWN GLASNEVIN
GOLDENBRIDGE NEWLANDS CROSS PALMERSTOWN

Glasnevin Trust - 1916 List

Initials (Grave Record)

T

Forename (Grave Record)

THOMAS

Surname (Grave Record)

DOYLE

Date of Death (Grave Record)

30/04/1916

Affiliation

Civilian



FOUNDED IN 1828

GLASNEVIN TRUST

INCORPORATING: DARDISTOWN GLASNEVIN
GOLDENBRIDGE NEWLANDS CROSS PALMERSTOWN

Glasnevin Trust - 1916 List

Initials (Grave Record)

J

Forename (Grave Record)

JOHN

Surname (Grave Record)

DOYLE

Date of Death (Grave Record)

01/05/1916

Affiliation

Civilian



FOUNDED IN 1828

GLASNEVIN TRUST

INCORPORATING: DARDISTOWN GLASNEVIN
GOLDENBRIDGE NEWLANDS CROSS PALMERSTOWN

Glasnevin Trust - 1916 List

Initials (Grave Record)

D

Forename (Grave Record)

DANIEL

Surname (Grave Record)

DOYLE

Date of Death (Grave Record)

02/06/1916

Affiliation

Civilian



FOUNDED IN 1828

GLASNEVIN TRUST

INCORPORATING: DARDISTOWN GLASNEVIN
GOLDENBRIDGE NEWLANDS CROSS PALMERSTOWN

Glasnevin Trust - 1916 List

Initials (Grave Record)

J

Forename (Grave Record)

JAMES

Surname (Grave Record)

DUFFY

Date of Death (Grave Record)

24/04/1916

Affiliation

British Army



FOUNDED IN 1828

GLASNEVIN TRUST

INCORPORATING: DARDISTOWN GLASNEVIN
GOLDENBRIDGE NEWLANDS CROSS PALMERSTOWN

Glasnevin Trust - 1916 List

Initials (Grave Record)

C

Forename (Grave Record)

CORNELIUS

Surname (Grave Record)

DUGGAN

Date of Death (Grave Record)

29/04/1916

Affiliation

British Army



FOUNDED IN 1828

GLASNEVIN TRUST

INCORPORATING: DARDISTOWN GLASNEVIN
GOLDENBRIDGE NEWLANDS CROSS PALMERSTOWN

Glasnevin Trust - 1916 List

Initials (Grave Record)

R

Forename (Grave Record)

RICHARD

Surname (Grave Record)

DUNLEA

Date of Death (Grave Record)

28/04/1916

Affiliation

Civilian



FOUNDED IN 1828

GLASNEVIN TRUST

INCORPORATING: DARDISTOWN GLASNEVIN
GOLDENBRIDGE NEWLANDS CROSS PALMERSTOWN

Glasnevin Trust - 1916 List

Initials (Grave Record)

M

Forename (Grave Record)

MOSES

Surname (Grave Record)

DUNNE

Date of Death (Grave Record)

25/04/1916

Affiliation

Civilian



FOUNDED IN 1828

GLASNEVIN TRUST

INCORPORATING: DARDISTOWN GLASNEVIN
GOLDENBRIDGE NEWLANDS CROSS PALMERSTOWN

Glasnevin Trust - 1916 List

Initials (Grave Record)

E

Forename (Grave Record)

EDWARD

Surname (Grave Record)

DUNNE

Date of Death (Grave Record)

29/04/1916

Affiliation

Civilian



FOUNDED IN 1828

GLASNEVIN TRUST

INCORPORATING: DARDISTOWN GLASNEVIN
GOLDENBRIDGE NEWLANDS CROSS PALMERSTOWN

Glasnevin Trust - 1916 List

Initials (Grave Record)

J

Forename (Grave Record)

JOHN

Surname (Grave Record)

DUNPHY

Date of Death (Grave Record)

28/04/1916

Affiliation

Civilian



FOUNDED IN 1828

GLASNEVIN TRUST

INCORPORATING: DARDISTOWN GLASNEVIN
GOLDENBRIDGE NEWLANDS CROSS PALMERSTOWN

Glasnevin Trust - 1916 List

Initials (Grave Record)

J

Forename (Grave Record)

JOHN

Surname (Grave Record)

DWAN

Date of Death (Grave Record)

30/04/1916

Affiliation

Irish Volunteers



FOUNDED IN 1828

GLASNEVIN TRUST

INCORPORATING: DARDISTOWN GLASNEVIN
GOLDENBRIDGE NEWLANDS CROSS PALMERSTOWN

Glasnevin Trust - 1916 List

Initials (Grave Record)

M

Forename (Grave Record)

MARY

Surname (Grave Record)

DWYER

Date of Death (Grave Record)

25/04/1916

Affiliation

Civilian



FOUNDED IN 1828

GLASNEVIN TRUST

INCORPORATING: DARDISTOWN GLASNEVIN
GOLDENBRIDGE NEWLANDS CROSS PALMERSTOWN

Glasnevin Trust - 1916 List

Initials (Grave Record)

A G

Forename (Grave Record)

ALFRED GODDARD

Surname (Grave Record)

ELLIOTT

Date of Death (Grave Record)

26/04/1916

Affiliation

British Army



FOUNDED IN 1828

GLASNEVIN TRUST

INCORPORATING: DARDISTOWN GLASNEVIN
GOLDENBRIDGE NEWLANDS CROSS PALMERSTOWN

Glasnevin Trust - 1916 List

Initials (Grave Record)

A

Forename (Grave Record)

ALFRED

Surname (Grave Record)

ELLIS

Date of Death (Grave Record)

01/05/1916

Affiliation

British Army



FOUNDED IN 1828

GLASNEVIN TRUST

INCORPORATING: DARDISTOWN GLASNEVIN
GOLDENBRIDGE NEWLANDS CROSS PALMERSTOWN

Glasnevin Trust - 1916 List

Initials (Grave Record)

P

Forename (Grave Record)

PETER

Surname (Grave Record)

ENNIS

Date of Death (Grave Record)

25/04/1916

Affiliation

British Army



FOUNDED IN 1828

GLASNEVIN TRUST

INCORPORATING: DARDISTOWN GLASNEVIN
GOLDENBRIDGE NEWLANDS CROSS PALMERSTOWN

Glasnevin Trust - 1916 List

Initials (Grave Record)

G

Forename (Grave Record)

GEORGE

Surname (Grave Record)

ENNIS

Date of Death (Grave Record)

29/04/1916

Affiliation

Civilian



FOUNDED IN 1828

GLASNEVIN TRUST

INCORPORATING: DARDISTOWN GLASNEVIN
GOLDENBRIDGE NEWLANDS CROSS PALMERSTOWN

Glasnevin Trust - 1916 List

Initials (Grave Record)

E

Forename (Grave Record)

EDWARD

Surname (Grave Record)

ENNIS

Date of Death (Grave Record)

29/04/1916

Affiliation

Irish Volunteers



FOUNDED IN 1828

GLASNEVIN TRUST

INCORPORATING: DARDISTOWN GLASNEVIN
GOLDENBRIDGE NEWLANDS CROSS PALMERSTOWN

Glasnevin Trust - 1916 List

Initials (Grave Record)

P

Forename (Grave Record)

PETER

Surname (Grave Record)

FAHEY

Date of Death (Grave Record)

25/04/1916

Affiliation

Civilian



FOUNDED IN 1828

GLASNEVIN TRUST

INCORPORATING: DARDISTOWN GLASNEVIN
GOLDENBRIDGE NEWLANDS CROSS PALMERSTOWN

Glasnevin Trust - 1916 List

Initials (Grave Record)

E

Forename (Grave Record)

ERNEST

Surname (Grave Record)

FARNSWORTH

Date of Death (Grave Record)

26/04/1916

Affiliation

British Army



FOUNDED IN 1828

GLASNEVIN TRUST

INCORPORATING: DARDISTOWN GLASNEVIN
GOLDENBRIDGE NEWLANDS CROSS PALMERSTOWN

Glasnevin Trust - 1916 List

Initials (Grave Record)

J

Forename (Grave Record)

JEREMIAH

Surname (Grave Record)

FARRELL

Date of Death (Grave Record)

27/04/1916

Affiliation

Civilian



FOUNDED IN 1828

GLASNEVIN TRUST

INCORPORATING: DARDISTOWN GLASNEVIN
GOLDENBRIDGE NEWLANDS CROSS PALMERSTOWN

Glasnevin Trust - 1916 List

Initials (Grave Record)

P

Forename (Grave Record)

PATRICK

Surname (Grave Record)

FARRELL

Date of Death (Grave Record)

29/04/1916

Affiliation

Irish Volunteers



FOUNDED IN 1828

GLASNEVIN TRUST

INCORPORATING: DARDISTOWN GLASNEVIN
GOLDENBRIDGE NEWLANDS CROSS PALMERSTOWN

Glasnevin Trust - 1916 List

Initials (Grave Record)

J

Forename (Grave Record)

JOHN

Surname (Grave Record)

FARRELLY

Date of Death (Grave Record)

30/05/1916

Affiliation

Civilian



FOUNDED IN 1828

GLASNEVIN TRUST

INCORPORATING: DARDISTOWN GLASNEVIN
GOLDENBRIDGE NEWLANDS CROSS PALMERSTOWN

Glasnevin Trust - 1916 List

Initials (Grave Record)

P

Forename (Grave Record)

PAUL

Surname (Grave Record)

FEENEY

Date of Death (Grave Record)

28/04/1916

Affiliation

Civilian



FOUNDED IN 1828

GLASNEVIN TRUST

INCORPORATING: DARDISTOWN GLASNEVIN
GOLDENBRIDGE NEWLANDS CROSS PALMERSTOWN

Glasnevin Trust - 1916 List

Initials (Grave Record)

JJ

Forename (Grave Record)

JOHN JOSEPH

Surname (Grave Record)

FENNELL

Date of Death (Grave Record)

28/04/1916

Affiliation

Civilian



FOUNDED IN 1828

GLASNEVIN TRUST

INCORPORATING: DARDISTOWN GLASNEVIN
GOLDENBRIDGE NEWLANDS CROSS PALMERSTOWN

Glasnevin Trust - 1916 List

Initials (Grave Record)

P

Forename (Grave Record)

PATRICK

Surname (Grave Record)

FENNELL

Date of Death (Grave Record)

30/04/1916

Affiliation

Civilian



FOUNDED IN 1828

GLASNEVIN TRUST

INCORPORATING: DARDISTOWN GLASNEVIN
GOLDENBRIDGE NEWLANDS CROSS PALMERSTOWN

Glasnevin Trust - 1916 List

Initials (Grave Record)

A

Forename (Grave Record)

ARTHUR

Surname (Grave Record)

FERRIS

Date of Death (Grave Record)

28/04/1916

Affiliation

Civilian



FOUNDED IN 1828

GLASNEVIN TRUST

INCORPORATING: DARDISTOWN GLASNEVIN
GOLDENBRIDGE NEWLANDS CROSS PALMERSTOWN

Glasnevin Trust - 1916 List

Initials (Grave Record)

P

Forename (Grave Record)

PATRICK

Surname (Grave Record)

FETHERSTON

Date of Death (Grave Record)

24/04/1916

Affiliation

Civilian



FOUNDED IN 1828

GLASNEVIN TRUST

INCORPORATING: DARDISTOWN GLASNEVIN
GOLDENBRIDGE NEWLANDS CROSS PALMERSTOWN

Glasnevin Trust - 1916 List

Initials (Grave Record)

F

Forename (Grave Record)

FRANCIS

Surname (Grave Record)

FINLAY

Date of Death (Grave Record)

09/05/1916

Affiliation

Civilian



FOUNDED IN 1828

GLASNEVIN TRUST

INCORPORATING: DARDISTOWN GLASNEVIN
GOLDENBRIDGE NEWLANDS CROSS PALMERSTOWN

Glasnevin Trust - 1916 List

Initials (Grave Record)

J

Forename (Grave Record)

JAMES

Surname (Grave Record)

FINNEGAN

Date of Death (Grave Record)

29/04/1916

Affiliation

Civilian



FOUNDED IN 1828

GLASNEVIN TRUST

INCORPORATING: DARDISTOWN GLASNEVIN
GOLDENBRIDGE NEWLANDS CROSS PALMERSTOWN

Glasnevin Trust - 1916 List

Initials (Grave Record)

W

Forename (Grave Record)

WILLIAM

Surname (Grave Record)

FINNEGAN

Date of Death (Grave Record)

01/05/1916

Affiliation

Civilian



FOUNDED IN 1828

GLASNEVIN TRUST

INCORPORATING: DARDISTOWN GLASNEVIN
GOLDENBRIDGE NEWLANDS CROSS PALMERSTOWN

Glasnevin Trust - 1916 List

Initials (Grave Record)

J H

Forename (Grave Record)

JOHN HENRY

Surname (Grave Record)

FLETCHER

Date of Death (Grave Record)

27/04/1916

Affiliation

British Army



FOUNDED IN 1828

GLASNEVIN TRUST

INCORPORATING: DARDISTOWN GLASNEVIN
GOLDENBRIDGE NEWLANDS CROSS PALMERSTOWN

Glasnevin Trust - 1916 List

Initials (Grave Record)

J

Forename (Grave Record)

JOHN

Surname (Grave Record)

FLYNN

Date of Death (Grave Record)

Affiliation

Civilian



FOUNDED IN 1828

GLASNEVIN TRUST

INCORPORATING: DARDISTOWN GLASNEVIN
GOLDENBRIDGE NEWLANDS CROSS PALMERSTOWN

Glasnevin Trust - 1916 List

Initials (Grave Record)

M

Forename (Grave Record)

MICHAEL

Surname (Grave Record)

FLYNN

Date of Death (Grave Record)

Affiliation

Civilian



FOUNDED IN 1828

GLASNEVIN TRUST

INCORPORATING: DARDISTOWN GLASNEVIN
GOLDENBRIDGE NEWLANDS CROSS PALMERSTOWN

Glasnevin Trust - 1916 List

Initials (Grave Record)

T

Forename (Grave Record)

THOMAS

Surname (Grave Record)

FORAN

Date of Death (Grave Record)

30/04/1916

Affiliation

Civilian



FOUNDED IN 1828

GLASNEVIN TRUST

INCORPORATING: DARDISTOWN GLASNEVIN
GOLDENBRIDGE NEWLANDS CROSS PALMERSTOWN

Glasnevin Trust - 1916 List

Initials (Grave Record)

J R

Forename (Grave Record)

JOHN ROBERT

Surname (Grave Record)

FORTH

Date of Death (Grave Record)

27/04/1916

Affiliation

British Army



FOUNDED IN 1828

GLASNEVIN TRUST

INCORPORATING: DARDISTOWN GLASNEVIN
GOLDENBRIDGE NEWLANDS CROSS PALMERSTOWN

Glasnevin Trust - 1916 List

Initials (Grave Record)

J F

Forename (Grave Record)

JOHN FRANCIS

Surname (Grave Record)

FOSTER

Date of Death (Grave Record)

24/04/1916

Affiliation

Civilian



FOUNDED IN 1828

GLASNEVIN TRUST

INCORPORATING: DARDISTOWN GLASNEVIN
GOLDENBRIDGE NEWLANDS CROSS PALMERSTOWN

Glasnevin Trust - 1916 List

Initials (Grave Record)

W

Forename (Grave Record)

WILLIAM

Surname (Grave Record)

FOX

Date of Death (Grave Record)

25/04/1916

Affiliation

Civilian



FOUNDED IN 1828

GLASNEVIN TRUST

INCORPORATING: DARDISTOWN GLASNEVIN
GOLDENBRIDGE NEWLANDS CROSS PALMERSTOWN

Glasnevin Trust - 1916 List

Initials (Grave Record)

J

Forename (Grave Record)

JAMES

Surname (Grave Record)

FOX

Date of Death (Grave Record)

25/04/1916

Affiliation

Irish Volunteers



FOUNDED IN 1828

GLASNEVIN TRUST

INCORPORATING: DARDISTOWN GLASNEVIN
GOLDENBRIDGE NEWLANDS CROSS PALMERSTOWN

Glasnevin Trust - 1916 List

Initials (Grave Record)

E

Forename (Grave Record)

ERNEST

Surname (Grave Record)

FOX

Date of Death (Grave Record)

29/04/1916

Affiliation

British Army



FOUNDED IN 1828

GLASNEVIN TRUST

INCORPORATING: DARDISTOWN GLASNEVIN
GOLDENBRIDGE NEWLANDS CROSS PALMERSTOWN

Glasnevin Trust - 1916 List

Initials (Grave Record)

J

Forename (Grave Record)

JAMES

Surname (Grave Record)

FRAZER

Date of Death (Grave Record)

26/04/1916

Affiliation

Civilian



FOUNDED IN 1828

GLASNEVIN TRUST

INCORPORATING: DARDISTOWN GLASNEVIN
GOLDENBRIDGE NEWLANDS CROSS PALMERSTOWN

Glasnevin Trust - 1916 List

Initials (Grave Record)

P

Forename (Grave Record)

PATRICK

Surname (Grave Record)

FRIEL

Date of Death (Grave Record)

28/04/1916

Affiliation

Civilian



FOUNDED IN 1828

GLASNEVIN TRUST

INCORPORATING: DARDISTOWN GLASNEVIN
GOLDENBRIDGE NEWLANDS CROSS PALMERSTOWN

Glasnevin Trust - 1916 List

Initials (Grave Record)

W

Forename (Grave Record)

WILLIAM

Surname (Grave Record)

FRITH

Date of Death (Grave Record)

28/04/1916

Affiliation

Dublin Metropolitan Police



FOUNDED IN 1828

GLASNEVIN TRUST

INCORPORATING: DARDISTOWN GLASNEVIN
GOLDENBRIDGE NEWLANDS CROSS PALMERSTOWN

Glasnevin Trust - 1916 List

Initials (Grave Record)

N N

Forename (Grave Record)

NEVILLE NICHOLAS

Surname (Grave Record)

FRYDAY

Date of Death (Grave Record)

30/04/1916

Affiliation

Canadian Army



FOUNDED IN 1828

GLASNEVIN TRUST

INCORPORATING: DARDISTOWN GLASNEVIN
GOLDENBRIDGE NEWLANDS CROSS PALMERSTOWN

Glasnevin Trust - 1916 List

Initials (Grave Record)

R

Forename (Grave Record)

ROBERT

Surname (Grave Record)

GAMBLE

Date of Death (Grave Record)

26/04/1916

Affiliation

British Army



FOUNDED IN 1828

GLASNEVIN TRUST

INCORPORATING: DARDISTOWN GLASNEVIN
GOLDENBRIDGE NEWLANDS CROSS PALMERSTOWN

Glasnevin Trust - 1916 List

Initials (Grave Record)

G

Forename (Grave Record)

GEORGE

Surname (Grave Record)

GEOGHEGAN

Date of Death (Grave Record)

26/04/1916

Affiliation

Irish Citizen Army



FOUNDED IN 1828

GLASNEVIN TRUST

INCORPORATING: DARDISTOWN GLASNEVIN
GOLDENBRIDGE NEWLANDS CROSS PALMERSTOWN

Glasnevin Trust - 1916 List

Initials (Grave Record)

P J

Forename (Grave Record)

PATRICK JOSEPH

Surname (Grave Record)

GERAGHTY

Date of Death (Grave Record)

27/04/1916

Affiliation

Civilian



FOUNDED IN 1828

GLASNEVIN TRUST

INCORPORATING: DARDISTOWN GLASNEVIN
GOLDENBRIDGE NEWLANDS CROSS PALMERSTOWN

Glasnevin Trust - 1916 List

Initials (Grave Record)

J

Forename (Grave Record)

JOSEPH

Surname (Grave Record)

GERAGHTY

Date of Death (Grave Record)

28/04/1916

Affiliation

Civilian



FOUNDED IN 1828

GLASNEVIN TRUST

INCORPORATING: DARDISTOWN GLASNEVIN
GOLDENBRIDGE NEWLANDS CROSS PALMERSTOWN

Glasnevin Trust - 1916 List

Initials (Grave Record)

J H

Forename (Grave Record)

JOHN HENRY

Surname (Grave Record)

GIBBS

Date of Death (Grave Record)

24/04/1916

Affiliation

Irish Association of Volunteer Training Corps



FOUNDED IN 1828

GLASNEVIN TRUST

INCORPORATING: DARDISTOWN GLASNEVIN
GOLDENBRIDGE NEWLANDS CROSS PALMERSTOWN

Glasnevin Trust - 1916 List

Initials (Grave Record)

J

Forename (Grave Record)

JOHN

Surname (Grave Record)

GIBNEY

Date of Death (Grave Record)

02/05/1916

Affiliation

Civilian



FOUNDED IN 1828

GLASNEVIN TRUST

INCORPORATING: DARDISTOWN GLASNEVIN
GOLDENBRIDGE NEWLANDS CROSS PALMERSTOWN

Glasnevin Trust - 1916 List

Initials (Grave Record)

R

Forename (Grave Record)

ROBERT

Surname (Grave Record)

GLAISTER

Date of Death (Grave Record)

28/04/1916

Affiliation

British Army



FOUNDED IN 1828

GLASNEVIN TRUST

INCORPORATING: DARDISTOWN GLASNEVIN
GOLDENBRIDGE NEWLANDS CROSS PALMERSTOWN

Glasnevin Trust - 1916 List

Initials (Grave Record)

D

Forename (Grave Record)

DAVID

Surname (Grave Record)

GLENNON

Date of Death (Grave Record)

29/04/1916

Affiliation

Civilian



FOUNDED IN 1828

GLASNEVIN TRUST

INCORPORATING: DARDISTOWN GLASNEVIN
GOLDENBRIDGE NEWLANDS CROSS PALMERSTOWN

Glasnevin Trust - 1916 List

Initials (Grave Record)

M

Forename (Grave Record)

MICHAEL

Surname (Grave Record)

GLYNN

Date of Death (Grave Record)

27/04/1916

Affiliation

Civilian



FOUNDED IN 1828

GLASNEVIN TRUST

INCORPORATING: DARDISTOWN GLASNEVIN
GOLDENBRIDGE NEWLANDS CROSS PALMERSTOWN

Glasnevin Trust - 1916 List

Initials (Grave Record)

J

Forename (Grave Record)

JAMES

Surname (Grave Record)

GORMLEY

Date of Death (Grave Record)

28/04/1916

Affiliation

Royal Irish Constabulary



FOUNDED IN 1828

GLASNEVIN TRUST

INCORPORATING: DARDISTOWN GLASNEVIN
GOLDENBRIDGE NEWLANDS CROSS PALMERSTOWN

Glasnevin Trust - 1916 List

Initials (Grave Record)

J

Forename (Grave Record)

JOSEPH

Surname (Grave Record)

GOSS

Date of Death (Grave Record)

26/04/1916

Affiliation

British Army



FOUNDED IN 1828

GLASNEVIN TRUST

INCORPORATING: DARDISTOWN GLASNEVIN
GOLDENBRIDGE NEWLANDS CROSS PALMERSTOWN

Glasnevin Trust - 1916 List

Initials (Grave Record)

A

Forename (Grave Record)

ANDREW

Surname (Grave Record)

GOULDING

Date of Death (Grave Record)

19/05/1916

Affiliation

Civilian



FOUNDED IN 1828

GLASNEVIN TRUST

INCORPORATING: DARDISTOWN GLASNEVIN
GOLDENBRIDGE NEWLANDS CROSS PALMERSTOWN

Glasnevin Trust - 1916 List

Initials (Grave Record)

G

Forename (Grave Record)

GEORGE

Surname (Grave Record)

GRAY

Date of Death (Grave Record)

28/04/1916

Affiliation

British Army



FOUNDED IN 1828

GLASNEVIN TRUST

INCORPORATING: DARDISTOWN GLASNEVIN
GOLDENBRIDGE NEWLANDS CROSS PALMERSTOWN

Glasnevin Trust - 1916 List

Initials (Grave Record)

A

Forename (Grave Record)

ALEXANDER

Surname (Grave Record)

GRAY

Date of Death (Grave Record)

10/05/1916

Affiliation

Royal Irish Constabulary



FOUNDED IN 1828

GLASNEVIN TRUST

INCORPORATING: DARDISTOWN GLASNEVIN
GOLDENBRIDGE NEWLANDS CROSS PALMERSTOWN

Glasnevin Trust - 1916 List

Initials (Grave Record)

P

Forename (Grave Record)

PATRICK

Surname (Grave Record)

GREEN

Date of Death (Grave Record)

27/04/1916

Affiliation

Civilian



FOUNDED IN 1828

GLASNEVIN TRUST

INCORPORATING: DARDISTOWN GLASNEVIN
GOLDENBRIDGE NEWLANDS CROSS PALMERSTOWN

Glasnevin Trust - 1916 List

Initials (Grave Record)

W

Forename (Grave Record)

WILLIAM

Surname (Grave Record)

GREGG

Date of Death (Grave Record)

29/04/1916

Affiliation

Civilian



FOUNDED IN 1828

GLASNEVIN TRUST

INCORPORATING: DARDISTOWN GLASNEVIN
GOLDENBRIDGE NEWLANDS CROSS PALMERSTOWN

Glasnevin Trust - 1916 List

Initials (Grave Record)

R C

Forename (Grave Record)

ROBERT CANTEBURY

Surname (Grave Record)

HALL

Date of Death (Grave Record)

27/04/1916

Affiliation

Civilian



FOUNDED IN 1828

GLASNEVIN TRUST

INCORPORATING: DARDISTOWN GLASNEVIN
GOLDENBRIDGE NEWLANDS CROSS PALMERSTOWN

Glasnevin Trust - 1916 List

Initials (Grave Record)

W J

Forename (Grave Record)

WILLIAM JAMES

Surname (Grave Record)

HALLIDAY

Date of Death (Grave Record)

27/04/1916

Affiliation

Civilian



FOUNDED IN 1828

GLASNEVIN TRUST

INCORPORATING: DARDISTOWN GLASNEVIN
GOLDENBRIDGE NEWLANDS CROSS PALMERSTOWN

Glasnevin Trust - 1916 List

Initials (Grave Record)

J

Forename (Grave Record)

JOHN

Surname (Grave Record)

HANNA

Date of Death (Grave Record)

28/04/1916

Affiliation

British Army



FOUNDED IN 1828

GLASNEVIN TRUST

INCORPORATING: DARDISTOWN GLASNEVIN
GOLDENBRIDGE NEWLANDS CROSS PALMERSTOWN

Glasnevin Trust - 1916 List

Initials (Grave Record)

E

Forename (Grave Record)

ELIZABETH

Surname (Grave Record)

HANRATTY

Date of Death (Grave Record)

28/04/1916

Affiliation

Civilian



FOUNDED IN 1828

GLASNEVIN TRUST

INCORPORATING: DARDISTOWN GLASNEVIN
GOLDENBRIDGE NEWLANDS CROSS PALMERSTOWN

Glasnevin Trust - 1916 List

Initials (Grave Record)

T

Forename (Grave Record)

THOMAS

Surname (Grave Record)

HARBORNE

Date of Death (Grave Record)

24/04/1916

Affiliation

Irish Association of Volunteer Training Corps



FOUNDED IN 1828

GLASNEVIN TRUST

INCORPORATING: DARDISTOWN GLASNEVIN
GOLDENBRIDGE NEWLANDS CROSS PALMERSTOWN

Glasnevin Trust - 1916 List

Initials (Grave Record)

H

Forename (Grave Record)

HENRY

Surname (Grave Record)

HARE

Date of Death (Grave Record)

26/04/1916

Affiliation

British Army



FOUNDED IN 1828

GLASNEVIN TRUST

INCORPORATING: DARDISTOWN GLASNEVIN
GOLDENBRIDGE NEWLANDS CROSS PALMERSTOWN

Glasnevin Trust - 1916 List

Initials (Grave Record)

A

Forename (Grave Record)

ABRAHAM

Surname (Grave Record)

HARRIS

Date of Death (Grave Record)

24/04/1916

Affiliation

Civilian



FOUNDED IN 1828

GLASNEVIN TRUST

INCORPORATING: DARDISTOWN GLASNEVIN
GOLDENBRIDGE NEWLANDS CROSS PALMERSTOWN

Glasnevin Trust - 1916 List

Initials (Grave Record)

P

Forename (Grave Record)

PATRICK

Surname (Grave Record)

HARRIS

Date of Death (Grave Record)

25/04/1916

Affiliation

Civilian



FOUNDED IN 1828

GLASNEVIN TRUST

INCORPORATING: DARDISTOWN GLASNEVIN
GOLDENBRIDGE NEWLANDS CROSS PALMERSTOWN

Glasnevin Trust - 1916 List

Initials (Grave Record)

T

Forename (Grave Record)

THOMAS

Surname (Grave Record)

HARRISON

Date of Death (Grave Record)

29/04/1916

Affiliation

British Army



FOUNDED IN 1828

GLASNEVIN TRUST

INCORPORATING: DARDISTOWN GLASNEVIN
GOLDENBRIDGE NEWLANDS CROSS PALMERSTOWN

Glasnevin Trust - 1916 List

Initials (Grave Record)

WV

Forename (Grave Record)

WILLIAM VICTOR

Surname (Grave Record)

HAWKEN

Date of Death (Grave Record)

26/04/1916

Affiliation

British Army



FOUNDED IN 1828

GLASNEVIN TRUST

INCORPORATING: DARDISTOWN GLASNEVIN
GOLDENBRIDGE NEWLANDS CROSS PALMERSTOWN

Glasnevin Trust - 1916 List

Initials (Grave Record)

M

Forename (Grave Record)

MORGAN

Surname (Grave Record)

HAYES

Date of Death (Grave Record)

28/04/1916

Affiliation

Civilian



FOUNDED IN 1828

GLASNEVIN TRUST

INCORPORATING: DARDISTOWN GLASNEVIN
GOLDENBRIDGE NEWLANDS CROSS PALMERSTOWN

Glasnevin Trust - 1916 List

Initials (Grave Record)

C

Forename (Grave Record)

CHARLES

Surname (Grave Record)

HAYTER

Date of Death (Grave Record)

28/04/1916

Affiliation

Civilian



FOUNDED IN 1828

GLASNEVIN TRUST

INCORPORATING: DARDISTOWN GLASNEVIN
GOLDENBRIDGE NEWLANDS CROSS PALMERSTOWN

Glasnevin Trust - 1916 List

Initials (Grave Record)

J D A

Forename (Grave Record)

JAMES DAVID ARTHUR

Surname (Grave Record)

HEADLAND

Date of Death (Grave Record)

24/04/1916

Affiliation

British Army



FOUNDED IN 1828

GLASNEVIN TRUST

INCORPORATING: DARDISTOWN GLASNEVIN
GOLDENBRIDGE NEWLANDS CROSS PALMERSTOWN

Glasnevin Trust - 1916 List

Initials (Grave Record)

J

Forename (Grave Record)

JOHN

Surname (Grave Record)

HEALY

Date of Death (Grave Record)

27/04/1916

Affiliation

Fianna Éireann



FOUNDED IN 1828

GLASNEVIN TRUST

INCORPORATING: DARDISTOWN GLASNEVIN
GOLDENBRIDGE NEWLANDS CROSS PALMERSTOWN

Glasnevin Trust - 1916 List

Initials (Grave Record)

J P

Forename (Grave Record)

JAMES PATRICK

Surname (Grave Record)

HEALY

Date of Death (Grave Record)

29/04/1916

Affiliation

Civilian



FOUNDED IN 1828

GLASNEVIN TRUST

INCORPORATING: DARDISTOWN GLASNEVIN
GOLDENBRIDGE NEWLANDS CROSS PALMERSTOWN

Glasnevin Trust - 1916 List

Initials (Grave Record)

W

Forename (Grave Record)

WILLIAM

Surname (Grave Record)

HEAVEY

Date of Death (Grave Record)

29/04/1916

Affiliation

Civilian



FOUNDED IN 1828

GLASNEVIN TRUST

INCORPORATING: DARDISTOWN GLASNEVIN
GOLDENBRIDGE NEWLANDS CROSS PALMERSTOWN

Glasnevin Trust - 1916 List

Initials (Grave Record)

R P

Forename (Grave Record)

ROBERT PATRICK

Surname (Grave Record)

HEENEY

Date of Death (Grave Record)

26/04/1916

Affiliation

Civilian



FOUNDED IN 1828

GLASNEVIN TRUST

INCORPORATING: DARDISTOWN GLASNEVIN
GOLDENBRIDGE NEWLANDS CROSS PALMERSTOWN

Glasnevin Trust - 1916 List

Initials (Grave Record)

S

Forename (Grave Record)

SEAN

Surname (Grave Record)

HEUSTON

Date of Death (Grave Record)

08/05/1916

Affiliation

Irish Volunteers



FOUNDED IN 1828

GLASNEVIN TRUST

INCORPORATING: DARDISTOWN GLASNEVIN
GOLDENBRIDGE NEWLANDS CROSS PALMERSTOWN

Glasnevin Trust - 1916 List

Initials (Grave Record)

H M

Forename (Grave Record)

HENRY MEYRICK

Surname (Grave Record)

HEWETT

Date of Death (Grave Record)

27/04/1916

Affiliation

British Army



FOUNDED IN 1828

GLASNEVIN TRUST

INCORPORATING: DARDISTOWN GLASNEVIN
GOLDENBRIDGE NEWLANDS CROSS PALMERSTOWN

Glasnevin Trust - 1916 List

Initials (Grave Record)

J

Forename (Grave Record)

JAMES

Surname (Grave Record)

HICKEY

Date of Death (Grave Record)

28/04/1916

Affiliation

Royal Irish Constabulary



FOUNDED IN 1828

GLASNEVIN TRUST

INCORPORATING: DARDISTOWN GLASNEVIN
GOLDENBRIDGE NEWLANDS CROSS PALMERSTOWN

Glasnevin Trust - 1916 List

Initials (Grave Record)

T

Forename (Grave Record)

THOMAS

Surname (Grave Record)

HICKEY

Date of Death (Grave Record)

29/04/1916

Affiliation

Civilian



FOUNDED IN 1828

GLASNEVIN TRUST

INCORPORATING: DARDISTOWN GLASNEVIN
GOLDENBRIDGE NEWLANDS CROSS PALMERSTOWN

Glasnevin Trust - 1916 List

Initials (Grave Record)

C

Forename (Grave Record)

CHRISTOPHER

Surname (Grave Record)

HICKEY

Date of Death (Grave Record)

29/04/1916

Affiliation

Civilian



FOUNDED IN 1828

GLASNEVIN TRUST

INCORPORATING: DARDISTOWN GLASNEVIN
GOLDENBRIDGE NEWLANDS CROSS PALMERSTOWN

Glasnevin Trust - 1916 List

Initials (Grave Record)

C

Forename (Grave Record)

CHRISTOPHER

Surname (Grave Record)

HIGGINS (Heggins)

Date of Death (Grave Record)

02/05/1916

Affiliation

Civilian



FOUNDED IN 1828

GLASNEVIN TRUST

INCORPORATING: DARDISTOWN GLASNEVIN
GOLDENBRIDGE NEWLANDS CROSS PALMERSTOWN

Glasnevin Trust - 1916 List

Initials (Grave Record)

P

Forename (Grave Record)

PATRICK

Surname (Grave Record)

HOEY

Date of Death (Grave Record)

29/04/1916

Affiliation

Civilian



FOUNDED IN 1828

GLASNEVIN TRUST

INCORPORATING: DARDISTOWN GLASNEVIN
GOLDENBRIDGE NEWLANDS CROSS PALMERSTOWN

Glasnevin Trust - 1916 List

Initials (Grave Record)

J

Forename (Grave Record)

JOHN

Surname (Grave Record)

HOEY

Date of Death (Grave Record)

05/05/1916

Affiliation

Civilian



FOUNDED IN 1828

GLASNEVIN TRUST

INCORPORATING: DARDISTOWN GLASNEVIN
GOLDENBRIDGE NEWLANDS CROSS PALMERSTOWN

Glasnevin Trust - 1916 List

Initials (Grave Record)

J

Forename (Grave Record)

JEREMIAH

Surname (Grave Record)

HOGAN

Date of Death (Grave Record)

28/04/1916

Affiliation

Civilian



FOUNDED IN 1828

GLASNEVIN TRUST

INCORPORATING: DARDISTOWN GLASNEVIN
GOLDENBRIDGE NEWLANDS CROSS PALMERSTOWN

Glasnevin Trust - 1916 List

Initials (Grave Record)

J

Forename (Grave Record)

JAMES

Surname (Grave Record)

HOGAN

Date of Death (Grave Record)

30/04/1916

Affiliation

Civilian



FOUNDED IN 1828

GLASNEVIN TRUST

INCORPORATING: DARDISTOWN GLASNEVIN
GOLDENBRIDGE NEWLANDS CROSS PALMERSTOWN

Glasnevin Trust - 1916 List

Initials (Grave Record)

A

Forename (Grave Record)

ARTHUR

Surname (Grave Record)

HOLBROOK

Date of Death (Grave Record)

26/04/1916

Affiliation

British Army



FOUNDED IN 1828

GLASNEVIN TRUST

INCORPORATING: DARDISTOWN GLASNEVIN
GOLDENBRIDGE NEWLANDS CROSS PALMERSTOWN

Glasnevin Trust - 1916 List

Initials (Grave Record)

L

Forename (Grave Record)

LUKE

Surname (Grave Record)

HOLLAND

Date of Death (Grave Record)

26/04/1916

Affiliation

British Army



FOUNDED IN 1828

GLASNEVIN TRUST

INCORPORATING: DARDISTOWN GLASNEVIN
GOLDENBRIDGE NEWLANDS CROSS PALMERSTOWN

Glasnevin Trust - 1916 List

Initials (Grave Record)

J

Forename (Grave Record)

JOSEPH

Surname (Grave Record)

HOSFORD

Date of Death (Grave Record)

26/04/1916

Affiliation

Irish Association of Volunteer Training Corps



FOUNDED IN 1828

GLASNEVIN TRUST

INCORPORATING: DARDISTOWN GLASNEVIN
GOLDENBRIDGE NEWLANDS CROSS PALMERSTOWN

Glasnevin Trust - 1916 List

Initials (Grave Record)

J B

Forename (Grave Record)

JOHN BERNARD

Surname (Grave Record)

HOWARD

Date of Death (Grave Record)

29/04/1916

Affiliation

Irish Volunteers



FOUNDED IN 1828

GLASNEVIN TRUST

INCORPORATING: DARDISTOWN GLASNEVIN
GOLDENBRIDGE NEWLANDS CROSS PALMERSTOWN

Glasnevin Trust - 1916 List

Initials (Grave Record)

C

Forename (Grave Record)

CHARLES

Surname (Grave Record)

HOYLE

Date of Death (Grave Record)

26/04/1916

Affiliation

British Army



FOUNDED IN 1828

GLASNEVIN TRUST

INCORPORATING: DARDISTOWN GLASNEVIN
GOLDENBRIDGE NEWLANDS CROSS PALMERSTOWN

Glasnevin Trust - 1916 List

Initials (Grave Record)

F J

Forename (Grave Record)

FREDERICK JOHN

Surname (Grave Record)

HUGHES

Date of Death (Grave Record)

24/04/1916

Affiliation

British Army



FOUNDED IN 1828

GLASNEVIN TRUST

INCORPORATING: DARDISTOWN GLASNEVIN
GOLDENBRIDGE NEWLANDS CROSS PALMERSTOWN

Glasnevin Trust - 1916 List

Initials (Grave Record)

M

Forename (Grave Record)

MICHAEL

Surname (Grave Record)

HUGHES

Date of Death (Grave Record)

29/04/1916

Affiliation

Civilian



FOUNDED IN 1828

GLASNEVIN TRUST

INCORPORATING: DARDISTOWN GLASNEVIN
GOLDENBRIDGE NEWLANDS CROSS PALMERSTOWN

Glasnevin Trust - 1916 List

Initials (Grave Record)

JW H

Forename (Grave Record)

JOHN WILLIAM HUMFREY

Surname (Grave Record)

HUMPHREYS

Date of Death (Grave Record)

25/04/1916

Affiliation

British Army



FOUNDED IN 1828

GLASNEVIN TRUST

INCORPORATING: DARDISTOWN GLASNEVIN
GOLDENBRIDGE NEWLANDS CROSS PALMERSTOWN

Glasnevin Trust - 1916 List

Initials (Grave Record)

W H

Forename (Grave Record)

WILLIAM HENRY

Surname (Grave Record)

HUMPHRIES

Date of Death (Grave Record)

29/04/1916

Affiliation

British Army



FOUNDED IN 1828

GLASNEVIN TRUST

INCORPORATING: DARDISTOWN GLASNEVIN
GOLDENBRIDGE NEWLANDS CROSS PALMERSTOWN

Glasnevin Trust - 1916 List

Initials (Grave Record)

G J

Forename (Grave Record)

GODFREY JACKSON

Surname (Grave Record)

HUNTER

Date of Death (Grave Record)

26/04/1916

Affiliation

British Army



FOUNDED IN 1828

GLASNEVIN TRUST

INCORPORATING: DARDISTOWN GLASNEVIN
GOLDENBRIDGE NEWLANDS CROSS PALMERSTOWN

Glasnevin Trust - 1916 List

Initials (Grave Record)

J

Forename (Grave Record)

JOHN

Surname (Grave Record)

HURLEY

Date of Death (Grave Record)

26/04/1916

Affiliation

Royal Irish Constabulary



FOUNDED IN 1828

GLASNEVIN TRUST

INCORPORATING: DARDISTOWN GLASNEVIN
GOLDENBRIDGE NEWLANDS CROSS PALMERSTOWN

Glasnevin Trust - 1916 List

Initials (Grave Record)

S

Forename (Grave Record)

SÉAN

Surname (Grave Record)

HURLEY

Date of Death (Grave Record)

27/04/1916

Affiliation

Irish Volunteers



FOUNDED IN 1828

GLASNEVIN TRUST

INCORPORATING: DARDISTOWN GLASNEVIN
GOLDENBRIDGE NEWLANDS CROSS PALMERSTOWN

Glasnevin Trust - 1916 List

Initials (Grave Record)

C H

Forename (Grave Record)

CHARLES HACHETTE

Surname (Grave Record)

HYLAND

Date of Death (Grave Record)

27/04/1916

Affiliation

Civilian



FOUNDED IN 1828

GLASNEVIN TRUST

INCORPORATING: DARDISTOWN GLASNEVIN
GOLDENBRIDGE NEWLANDS CROSS PALMERSTOWN

Glasnevin Trust - 1916 List

Initials (Grave Record)

P

Forename (Grave Record)

PATRICK

Surname (Grave Record)

IVORS

Date of Death (Grave Record)

27/04/1916

Affiliation

Civilian



FOUNDED IN 1828

GLASNEVIN TRUST

INCORPORATING: DARDISTOWN GLASNEVIN
GOLDENBRIDGE NEWLANDS CROSS PALMERSTOWN

Glasnevin Trust - 1916 List

Initials (Grave Record)

W E M

Forename (Grave Record)

WILLIAM EDGAR MOY

Surname (Grave Record)

JAMES

Date of Death (Grave Record)

24/04/1916

Affiliation

British Army



FOUNDED IN 1828

GLASNEVIN TRUST

INCORPORATING: DARDISTOWN GLASNEVIN
GOLDENBRIDGE NEWLANDS CROSS PALMERSTOWN

Glasnevin Trust - 1916 List

Initials (Grave Record)

P

Forename (Grave Record)

PERCY

Surname (Grave Record)

JEFFS

Date of Death (Grave Record)

26/04/1916

Affiliation

British Army



FOUNDED IN 1828

GLASNEVIN TRUST

INCORPORATING: DARDISTOWN GLASNEVIN
GOLDENBRIDGE NEWLANDS CROSS PALMERSTOWN

Glasnevin Trust - 1916 List

Initials (Grave Record)

J

Forename (Grave Record)

JAMES

Surname (Grave Record)

JESSOP

Date of Death (Grave Record)

26/04/1916

Affiliation

Civilian



FOUNDED IN 1828

GLASNEVIN TRUST

INCORPORATING: DARDISTOWN GLASNEVIN
GOLDENBRIDGE NEWLANDS CROSS PALMERSTOWN

Glasnevin Trust - 1916 List

Initials (Grave Record)

F

Forename (Grave Record)

FRANK

Surname (Grave Record)

JOBBER

Date of Death (Grave Record)

29/04/1916

Affiliation

British Army



FOUNDED IN 1828

GLASNEVIN TRUST

INCORPORATING: DARDISTOWN GLASNEVIN
GOLDENBRIDGE NEWLANDS CROSS PALMERSTOWN

Glasnevin Trust - 1916 List

Initials (Grave Record)

R

Forename (Grave Record)

ROBERT

Surname (Grave Record)

JOHNSTON

Date of Death (Grave Record)

Affiliation

Civilian



FOUNDED IN 1828

GLASNEVIN TRUST

INCORPORATING: DARDISTOWN GLASNEVIN
GOLDENBRIDGE NEWLANDS CROSS PALMERSTOWN

Glasnevin Trust - 1916 List

Initials (Grave Record)

C

Forename (Grave Record)

CHRISTOPHER

Surname (Grave Record)

JORDAN

Date of Death (Grave Record)

29/04/1916

Affiliation

Civilian



FOUNDED IN 1828

GLASNEVIN TRUST

INCORPORATING: DARDISTOWN GLASNEVIN
GOLDENBRIDGE NEWLANDS CROSS PALMERSTOWN

Glasnevin Trust - 1916 List

Initials (Grave Record)

T M

Forename (Grave Record)

THOMAS MORAN

Surname (Grave Record)

JOZÉ

Date of Death (Grave Record)

28/04/1916

Affiliation

Civilian



FOUNDED IN 1828

GLASNEVIN TRUST

INCORPORATING: DARDISTOWN GLASNEVIN
GOLDENBRIDGE NEWLANDS CROSS PALMERSTOWN

Glasnevin Trust - 1916 List

Initials (Grave Record)

J

Forename (Grave Record)

JANE

Surname (Grave Record)

KANE

Date of Death (Grave Record)

27/04/1916

Affiliation

Civilian



FOUNDED IN 1828

GLASNEVIN TRUST

INCORPORATING: DARDISTOWN GLASNEVIN
GOLDENBRIDGE NEWLANDS CROSS PALMERSTOWN

Glasnevin Trust - 1916 List

Initials (Grave Record)

E

Forename (Grave Record)

ERNEST

Surname (Grave Record)

KAVANAGH

Date of Death (Grave Record)

25/04/1916

Affiliation

Civilian



FOUNDED IN 1828

GLASNEVIN TRUST

INCORPORATING: DARDISTOWN GLASNEVIN
GOLDENBRIDGE NEWLANDS CROSS PALMERSTOWN

Glasnevin Trust - 1916 List

Initials (Grave Record)

C

Forename (Grave Record)

CHARLES

Surname (Grave Record)

KAVANAGH

Date of Death (Grave Record)

28/04/1916

Affiliation

Civilian



FOUNDED IN 1828

GLASNEVIN TRUST

INCORPORATING: DARDISTOWN GLASNEVIN
GOLDENBRIDGE NEWLANDS CROSS PALMERSTOWN

Glasnevin Trust - 1916 List

Initials (Grave Record)

M

Forename (Grave Record)

MICHAEL

Surname (Grave Record)

KAVANAGH

Date of Death (Grave Record)

17/05/1916

Affiliation

Civilian



FOUNDED IN 1828

GLASNEVIN TRUST

INCORPORATING: DARDISTOWN GLASNEVIN
GOLDENBRIDGE NEWLANDS CROSS PALMERSTOWN

Glasnevin Trust - 1916 List

Initials (Grave Record)

A

Forename (Grave Record)

ALEXANDER

Surname (Grave Record)

KEANE

Date of Death (Grave Record)

24/04/1916

Affiliation

Civilian



FOUNDED IN 1828

GLASNEVIN TRUST

INCORPORATING: DARDISTOWN GLASNEVIN
GOLDENBRIDGE NEWLANDS CROSS PALMERSTOWN

Glasnevin Trust - 1916 List

Initials (Grave Record)

J

Forename (Grave Record)

JOHANNA

Surname (Grave Record)

KEARNS

Date of Death (Grave Record)

25/04/1916

Affiliation

Civilian



FOUNDED IN 1828

GLASNEVIN TRUST

INCORPORATING: DARDISTOWN GLASNEVIN
GOLDENBRIDGE NEWLANDS CROSS PALMERSTOWN

Glasnevin Trust - 1916 List

Initials (Grave Record)

C

Forename (Grave Record)

CORNELIUS

Surname (Grave Record)

KEATING

Date of Death (Grave Record)

21/04/1916

Affiliation

Irish Volunteers



FOUNDED IN 1828

GLASNEVIN TRUST

INCORPORATING: DARDISTOWN GLASNEVIN
GOLDENBRIDGE NEWLANDS CROSS PALMERSTOWN

Glasnevin Trust - 1916 List

Initials (Grave Record)

F

Forename (Grave Record)

FRANCIS

Surname (Grave Record)

KEEGAN

Date of Death (Grave Record)

06/05/1916

Affiliation

Civilian



FOUNDED IN 1828

GLASNEVIN TRUST

INCORPORATING: DARDISTOWN GLASNEVIN
GOLDENBRIDGE NEWLANDS CROSS PALMERSTOWN

Glasnevin Trust - 1916 List

Initials (Grave Record)

J

Forename (Grave Record)

JOHN

Surname (Grave Record)

KEELY

Date of Death (Grave Record)

25/04/1916

Affiliation

Irish Volunteers



FOUNDED IN 1828

GLASNEVIN TRUST

INCORPORATING: DARDISTOWN GLASNEVIN
GOLDENBRIDGE NEWLANDS CROSS PALMERSTOWN

Glasnevin Trust - 1916 List

Initials (Grave Record)

A

Forename (Grave Record)

ALBERT

Surname (Grave Record)

KEEP

Date of Death (Grave Record)

05/05/1916

Affiliation

Civilian



FOUNDED IN 1828

GLASNEVIN TRUST

INCORPORATING: DARDISTOWN GLASNEVIN
GOLDENBRIDGE NEWLANDS CROSS PALMERSTOWN

Glasnevin Trust - 1916 List

Initials (Grave Record)

M

Forename (Grave Record)

MARGARET

Surname (Grave Record)

KEHOE

Date of Death (Grave Record)

24/04/1916

Affiliation

Civilian



FOUNDED IN 1828

GLASNEVIN TRUST

INCORPORATING: DARDISTOWN GLASNEVIN
GOLDENBRIDGE NEWLANDS CROSS PALMERSTOWN

Glasnevin Trust - 1916 List

Initials (Grave Record)

L

Forename (Grave Record)

LAURENCE

Surname (Grave Record)

KELLY

Date of Death (Grave Record)

24/04/1916

Affiliation

Civilian



FOUNDED IN 1828

GLASNEVIN TRUST

INCORPORATING: DARDISTOWN GLASNEVIN
GOLDENBRIDGE NEWLANDS CROSS PALMERSTOWN

Glasnevin Trust - 1916 List

Initials (Grave Record)

J

Forename (Grave Record)

JAMES

Surname (Grave Record)

KELLY

Date of Death (Grave Record)

25/04/1916

Affiliation

Fianna Éireann



FOUNDED IN 1828

GLASNEVIN TRUST

INCORPORATING: DARDISTOWN GLASNEVIN
GOLDENBRIDGE NEWLANDS CROSS PALMERSTOWN

Glasnevin Trust - 1916 List

Initials (Grave Record)

D

Forename (Grave Record)

DENIS

Surname (Grave Record)

KELLY

Date of Death (Grave Record)

26/04/1916

Affiliation

Civilian



FOUNDED IN 1828

GLASNEVIN TRUST

INCORPORATING: DARDISTOWN GLASNEVIN
GOLDENBRIDGE NEWLANDS CROSS PALMERSTOWN

Glasnevin Trust - 1916 List

Initials (Grave Record)

P

Forename (Grave Record)

PATRICK

Surname (Grave Record)

KELLY

Date of Death (Grave Record)

28/04/1916

Affiliation

Civilian



FOUNDED IN 1828

GLASNEVIN TRUST

INCORPORATING: DARDISTOWN GLASNEVIN
GOLDENBRIDGE NEWLANDS CROSS PALMERSTOWN

Glasnevin Trust - 1916 List

Initials (Grave Record)

M

Forename (Grave Record)

MARY

Surname (Grave Record)

KELLY

Date of Death (Grave Record)

30/04/1916

Affiliation

Civilian



FOUNDED IN 1828

GLASNEVIN TRUST

INCORPORATING: DARDISTOWN GLASNEVIN
GOLDENBRIDGE NEWLANDS CROSS PALMERSTOWN

Glasnevin Trust - 1916 List

Initials (Grave Record)

M

Forename (Grave Record)

MARY

Surname (Grave Record)

KENNY

Date of Death (Grave Record)

27/04/1916

Affiliation

Civilian



FOUNDED IN 1828

GLASNEVIN TRUST

INCORPORATING: DARDISTOWN GLASNEVIN
GOLDENBRIDGE NEWLANDS CROSS PALMERSTOWN

Glasnevin Trust - 1916 List

Initials (Grave Record)

R

Forename (Grave Record)

RICHARD

Surname (Grave Record)

KENT

Date of Death (Grave Record)

04/05/1916

Affiliation

Irish Volunteers



FOUNDED IN 1828

GLASNEVIN TRUST

INCORPORATING: DARDISTOWN GLASNEVIN
GOLDENBRIDGE NEWLANDS CROSS PALMERSTOWN

Glasnevin Trust - 1916 List

Initials (Grave Record)

T

Forename (Grave Record)

THOMAS

Surname (Grave Record)

KENT

Date of Death (Grave Record)

09/05/1916

Affiliation

Irish Volunteers



FOUNDED IN 1828

GLASNEVIN TRUST

INCORPORATING: DARDISTOWN GLASNEVIN
GOLDENBRIDGE NEWLANDS CROSS PALMERSTOWN

Glasnevin Trust - 1916 List

Initials (Grave Record)

T

Forename (Grave Record)

THOMAS

Surname (Grave Record)

KENYON

Date of Death (Grave Record)

28/04/1916

Affiliation

Civilian



FOUNDED IN 1828

GLASNEVIN TRUST

INCORPORATING: DARDISTOWN GLASNEVIN
GOLDENBRIDGE NEWLANDS CROSS PALMERSTOWN

Glasnevin Trust - 1916 List

Initials (Grave Record)

M

Forename (Grave Record)

MICHAEL

Surname (Grave Record)

KEOGH

Date of Death (Grave Record)

Affiliation

Civilian



FOUNDED IN 1828

GLASNEVIN TRUST

INCORPORATING: DARDISTOWN GLASNEVIN
GOLDENBRIDGE NEWLANDS CROSS PALMERSTOWN

Glasnevin Trust - 1916 List

Initials (Grave Record)

G

Forename (Grave Record)

GERALD

Surname (Grave Record)

KEOGH

Date of Death (Grave Record)

25/04/1916

Affiliation

Irish Volunteers



FOUNDED IN 1828

GLASNEVIN TRUST

INCORPORATING: DARDISTOWN GLASNEVIN
GOLDENBRIDGE NEWLANDS CROSS PALMERSTOWN

Glasnevin Trust - 1916 List

Initials (Grave Record)

J

Forename (Grave Record)

JOHN

Surname (Grave Record)

KIRWAN

Date of Death (Grave Record)

24/04/1916

Affiliation

Civilian



FOUNDED IN 1828

GLASNEVIN TRUST

INCORPORATING: DARDISTOWN GLASNEVIN
GOLDENBRIDGE NEWLANDS CROSS PALMERSTOWN

Glasnevin Trust - 1916 List

Initials (Grave Record)

A J

Forename (Grave Record)

ALBERT JAMES

Surname (Grave Record)

KITCHEN

Date of Death (Grave Record)

26/04/1916

Affiliation

British Army



FOUNDED IN 1828

GLASNEVIN TRUST

INCORPORATING: DARDISTOWN GLASNEVIN
GOLDENBRIDGE NEWLANDS CROSS PALMERSTOWN

Glasnevin Trust - 1916 List

Initials (Grave Record)

H

Forename (Grave Record)

HENRY

Surname (Grave Record)

KNOWLES

Date of Death (Grave Record)

26/04/1916

Affiliation

Civilian



FOUNDED IN 1828

GLASNEVIN TRUST

INCORPORATING: DARDISTOWN GLASNEVIN
GOLDENBRIDGE NEWLANDS CROSS PALMERSTOWN

Glasnevin Trust - 1916 List

Initials (Grave Record)

FWW

Forename (Grave Record)

FRANCIS WILLIAM WHITE

Surname (Grave Record)

KNOX

Date of Death (Grave Record)

27/04/1916

Affiliation

British Army



FOUNDED IN 1828

GLASNEVIN TRUST

INCORPORATING: DARDISTOWN GLASNEVIN
GOLDENBRIDGE NEWLANDS CROSS PALMERSTOWN

Glasnevin Trust - 1916 List

Initials (Grave Record)

M

Forename (Grave Record)

MICHAEL

Surname (Grave Record)

LAHIFF

Date of Death (Grave Record)

24/04/1916

Affiliation

Dublin Metropolitan Police



FOUNDED IN 1828

GLASNEVIN TRUST

INCORPORATING: DARDISTOWN GLASNEVIN
GOLDENBRIDGE NEWLANDS CROSS PALMERSTOWN

Glasnevin Trust - 1916 List

Initials (Grave Record)

W

Forename (Grave Record)

WILLIAM

Surname (Grave Record)

LANG

Date of Death (Grave Record)

26/04/1916

Affiliation

British Army



FOUNDED IN 1828

GLASNEVIN TRUST

INCORPORATING: DARDISTOWN GLASNEVIN
GOLDENBRIDGE NEWLANDS CROSS PALMERSTOWN

Glasnevin Trust - 1916 List

Initials (Grave Record)

P J

Forename (Grave Record)

PETER JOSEPH

Surname (Grave Record)

LAWLESS

Date of Death (Grave Record)

29/04/1916

Affiliation

Civilian



FOUNDED IN 1828

GLASNEVIN TRUST

INCORPORATING: DARDISTOWN GLASNEVIN
GOLDENBRIDGE NEWLANDS CROSS PALMERSTOWN

Glasnevin Trust - 1916 List

Initials (Grave Record)

C

Forename (Grave Record)

CHRISTOPHER

Surname (Grave Record)

LAWLOR

Date of Death (Grave Record)

09/05/1916

Affiliation

Civilian



FOUNDED IN 1828

GLASNEVIN TRUST

INCORPORATING: DARDISTOWN GLASNEVIN
GOLDENBRIDGE NEWLANDS CROSS PALMERSTOWN

Glasnevin Trust - 1916 List

Initials (Grave Record)

M

Forename (Grave Record)

MICHAEL

Surname (Grave Record)

LEAHY

Date of Death (Grave Record)

28/04/1916

Affiliation

Civilian



FOUNDED IN 1828

GLASNEVIN TRUST

INCORPORATING: DARDISTOWN GLASNEVIN
GOLDENBRIDGE NEWLANDS CROSS PALMERSTOWN

Glasnevin Trust - 1916 List

Initials (Grave Record)

P

Forename (Grave Record)

PATRICK

Surname (Grave Record)

LEEN

Date of Death (Grave Record)

01/05/1916

Affiliation

British Army



FOUNDED IN 1828

GLASNEVIN TRUST

INCORPORATING: DARDISTOWN GLASNEVIN
GOLDENBRIDGE NEWLANDS CROSS PALMERSTOWN

Glasnevin Trust - 1916 List

Initials (Grave Record)

M

Forename (Grave Record)

MARY

Surname (Grave Record)

LENNON

Date of Death (Grave Record)

27/04/1916

Affiliation

Civilian



FOUNDED IN 1828

GLASNEVIN TRUST

INCORPORATING: DARDISTOWN GLASNEVIN
GOLDENBRIDGE NEWLANDS CROSS PALMERSTOWN

Glasnevin Trust - 1916 List

Initials (Grave Record)

K

Forename (Grave Record)

KATE

Surname (Grave Record)

LENNON

Date of Death (Grave Record)

14/05/1916

Affiliation

Civilian



FOUNDED IN 1828

GLASNEVIN TRUST

INCORPORATING: DARDISTOWN GLASNEVIN
GOLDENBRIDGE NEWLANDS CROSS PALMERSTOWN

Glasnevin Trust - 1916 List

Initials (Grave Record)

W

Forename (Grave Record)

WILFRED

Surname (Grave Record)

LLEWELLYN

Date of Death (Grave Record)

29/04/1916

Affiliation

British Army



FOUNDED IN 1828

GLASNEVIN TRUST

INCORPORATING: DARDISTOWN GLASNEVIN
GOLDENBRIDGE NEWLANDS CROSS PALMERSTOWN

Glasnevin Trust - 1916 List

Initials (Grave Record)

S

Forename (Grave Record)

SAMUEL

Surname (Grave Record)

LONG

Date of Death (Grave Record)

04/05/1916

Affiliation

Civilian



FOUNDED IN 1828

GLASNEVIN TRUST

INCORPORATING: DARDISTOWN GLASNEVIN
GOLDENBRIDGE NEWLANDS CROSS PALMERSTOWN

Glasnevin Trust - 1916 List

Initials (Grave Record)

F

Forename (Grave Record)

FRANCIS

Surname (Grave Record)

LUCAS

Date of Death (Grave Record)

26/04/1916

Affiliation

British Army



FOUNDED IN 1828

GLASNEVIN TRUST

INCORPORATING: DARDISTOWN GLASNEVIN
GOLDENBRIDGE NEWLANDS CROSS PALMERSTOWN

Glasnevin Trust - 1916 List

Initials (Grave Record)

A

Forename (Grave Record)

ALGERNON

Surname (Grave Record)

LUCAS

Date of Death (Grave Record)

29/04/1916

Affiliation

British Army



FOUNDED IN 1828

GLASNEVIN TRUST

INCORPORATING: DARDISTOWN GLASNEVIN
GOLDENBRIDGE NEWLANDS CROSS PALMERSTOWN

Glasnevin Trust - 1916 List

Initials (Grave Record)

P

Forename (Grave Record)

PATRICK

Surname (Grave Record)

LYNCH

Date of Death (Grave Record)

28/04/1916

Affiliation

Irish Citizen Army



FOUNDED IN 1828

GLASNEVIN TRUST

INCORPORATING: DARDISTOWN GLASNEVIN
GOLDENBRIDGE NEWLANDS CROSS PALMERSTOWN

Glasnevin Trust - 1916 List

Initials (Grave Record)

J H

Forename (Grave Record)

JOHN HENRY

Surname (Grave Record)

MAC NAMARA

Date of Death (Grave Record)

28/04/1916

Affiliation

Civilian



FOUNDED IN 1828

GLASNEVIN TRUST

INCORPORATING: DARDISTOWN GLASNEVIN
GOLDENBRIDGE NEWLANDS CROSS PALMERSTOWN

Glasnevin Trust - 1916 List

Initials (Grave Record)

S

Forename (Grave Record)

SEAN

Surname (Grave Record)

MACDIARMADA

Date of Death (Grave Record)

12/05/1916

Affiliation

Irish Volunteers



FOUNDED IN 1828

GLASNEVIN TRUST

INCORPORATING: DARDISTOWN GLASNEVIN
GOLDENBRIDGE NEWLANDS CROSS PALMERSTOWN

Glasnevin Trust - 1916 List

Initials (Grave Record)

T

Forename (Grave Record)

THOMAS

Surname (Grave Record)

MACDONAGH

Date of Death (Grave Record)

03/05/1916

Affiliation

Irish Volunteers



FOUNDED IN 1828

GLASNEVIN TRUST

INCORPORATING: DARDISTOWN GLASNEVIN
GOLDENBRIDGE NEWLANDS CROSS PALMERSTOWN

Glasnevin Trust - 1916 List

Initials (Grave Record)

F

Forename (Grave Record)

FRANCIS

Surname (Grave Record)

MACKEN

Date of Death (Grave Record)

28/04/1916

Affiliation

Irish Volunteers



FOUNDED IN 1828

GLASNEVIN TRUST

INCORPORATING: DARDISTOWN GLASNEVIN
GOLDENBRIDGE NEWLANDS CROSS PALMERSTOWN

Glasnevin Trust - 1916 List

Initials (Grave Record)

P

Forename (Grave Record)

PETER (PAUL)

Surname (Grave Record)

MACKEN

Date of Death (Grave Record)

02/05/1916

Affiliation

Irish Volunteers



FOUNDED IN 1828

GLASNEVIN TRUST

INCORPORATING: DARDISTOWN GLASNEVIN
GOLDENBRIDGE NEWLANDS CROSS PALMERSTOWN

Glasnevin Trust - 1916 List

Initials (Grave Record)

RA

Forename (Grave Record)

ROBERT ANDERSON

Surname (Grave Record)

MacKENZIE

Date of Death (Grave Record)

27/04/1916

Affiliation

Civilian



FOUNDED IN 1828

GLASNEVIN TRUST

INCORPORATING: DARDISTOWN GLASNEVIN
GOLDENBRIDGE NEWLANDS CROSS PALMERSTOWN

Glasnevin Trust - 1916 List

Initials (Grave Record)

W

Forename (Grave Record)

WILLIAM

Surname (Grave Record)

MAGUIRE

Date of Death (Grave Record)

25/04/1916

Affiliation

Civilian



FOUNDED IN 1828

GLASNEVIN TRUST

INCORPORATING: DARDISTOWN GLASNEVIN
GOLDENBRIDGE NEWLANDS CROSS PALMERSTOWN

Glasnevin Trust - 1916 List

Initials (Grave Record)

M

Forename (Grave Record)

MICHAEL

Surname (Grave Record)

MALLIN

Date of Death (Grave Record)

08/05/1916

Affiliation

Irish Citizen Army



FOUNDED IN 1828

GLASNEVIN TRUST

INCORPORATING: DARDISTOWN GLASNEVIN
GOLDENBRIDGE NEWLANDS CROSS PALMERSTOWN

Glasnevin Trust - 1916 List

Initials (Grave Record)

J

Forename (Grave Record)

JOHN

Surname (Grave Record)

MALLON

Date of Death (Grave Record)

27/04/1916

Affiliation

Civilian



FOUNDED IN 1828

GLASNEVIN TRUST

INCORPORATING: DARDISTOWN GLASNEVIN
GOLDENBRIDGE NEWLANDS CROSS PALMERSTOWN

Glasnevin Trust - 1916 List

Initials (Grave Record)

M

Forename (Grave Record)

MICHAEL

Surname (Grave Record)

MALONE

Date of Death (Grave Record)

26/04/1916

Affiliation

Irish Volunteers



FOUNDED IN 1828

GLASNEVIN TRUST

INCORPORATING: DARDISTOWN GLASNEVIN
GOLDENBRIDGE NEWLANDS CROSS PALMERSTOWN

Glasnevin Trust - 1916 List

Initials (Grave Record)

P P

Forename (Grave Record)

PETER PAUL

Surname (Grave Record)

MANNING

Date of Death (Grave Record)

29/04/1916

Affiliation

Irish Volunteers



FOUNDED IN 1828

GLASNEVIN TRUST

INCORPORATING: DARDISTOWN GLASNEVIN
GOLDENBRIDGE NEWLANDS CROSS PALMERSTOWN

Glasnevin Trust - 1916 List

Initials (Grave Record)

P

Forename (Grave Record)

PATRICK

Surname (Grave Record)

MARTIN

Date of Death (Grave Record)

26/04/1916

Affiliation

Civilian



FOUNDED IN 1828

GLASNEVIN TRUST

INCORPORATING: DARDISTOWN GLASNEVIN
GOLDENBRIDGE NEWLANDS CROSS PALMERSTOWN

Glasnevin Trust - 1916 List

Initials (Grave Record)

J

Forename (Grave Record)

JOHN

Surname (Grave Record)

McBRIDE

Date of Death (Grave Record)

05/05/1916

Affiliation

Irish Volunteers



FOUNDED IN 1828

GLASNEVIN TRUST

INCORPORATING: DARDISTOWN GLASNEVIN
GOLDENBRIDGE NEWLANDS CROSS PALMERSTOWN

Glasnevin Trust - 1916 List

Initials (Grave Record)

H

Forename (Grave Record)

HARRIET

Surname (Grave Record)

McCABE

Date of Death (Grave Record)

27/04/1916

Affiliation

Civilian



FOUNDED IN 1828

GLASNEVIN TRUST

INCORPORATING: DARDISTOWN GLASNEVIN
GOLDENBRIDGE NEWLANDS CROSS PALMERSTOWN

Glasnevin Trust - 1916 List

Initials (Grave Record)

M

Forename (Grave Record)

MICHAEL

Surname (Grave Record)

McCABE

Date of Death (Grave Record)

27/04/1916

Affiliation

Civilian



FOUNDED IN 1828

GLASNEVIN TRUST

INCORPORATING: DARDISTOWN GLASNEVIN
GOLDENBRIDGE NEWLANDS CROSS PALMERSTOWN

Glasnevin Trust - 1916 List

Initials (Grave Record)

J

Forename (Grave Record)

JOHN

Surname (Grave Record)

McCARTHY

Date of Death (Grave Record)

23/05/1916

Affiliation

Civilian



FOUNDED IN 1828

GLASNEVIN TRUST

INCORPORATING: DARDISTOWN GLASNEVIN
GOLDENBRIDGE NEWLANDS CROSS PALMERSTOWN

Glasnevin Trust - 1916 List

Initials (Grave Record)

J

Forename (Grave Record)

JAMES

Surname (Grave Record)

McCARTNEY

Date of Death (Grave Record)

29/04/1916

Affiliation

Civilian



FOUNDED IN 1828

GLASNEVIN TRUST

INCORPORATING: DARDISTOWN GLASNEVIN
GOLDENBRIDGE NEWLANDS CROSS PALMERSTOWN

Glasnevin Trust - 1916 List

Initials (Grave Record)

A

Forename (Grave Record)

ALEXANDER

Surname (Grave Record)

McCLELLAND

Date of Death (Grave Record)

27/04/1916

Affiliation

British Army



FOUNDED IN 1828

GLASNEVIN TRUST

INCORPORATING: DARDISTOWN GLASNEVIN
GOLDENBRIDGE NEWLANDS CROSS PALMERSTOWN

Glasnevin Trust - 1916 List

Initials (Grave Record)

J

Forename (Grave Record)

JAMES

Surname (Grave Record)

McCORMACK

Date of Death (Grave Record)

26/04/1916

Affiliation

Irish Citizen Army



FOUNDED IN 1828

GLASNEVIN TRUST

INCORPORATING: DARDISTOWN GLASNEVIN
GOLDENBRIDGE NEWLANDS CROSS PALMERSTOWN

Glasnevin Trust - 1916 List

Initials (Grave Record)

J

Forename (Grave Record)

JAMES

Surname (Grave Record)

McCORMACK

Date of Death (Grave Record)

27/04/1916

Affiliation

Civilian



FOUNDED IN 1828

GLASNEVIN TRUST

INCORPORATING: DARDISTOWN GLASNEVIN
GOLDENBRIDGE NEWLANDS CROSS PALMERSTOWN

Glasnevin Trust - 1916 List

Initials (Grave Record)

J

Forename (Grave Record)

JAMES

Surname (Grave Record)

McCULLOUGH

Date of Death (Grave Record)

02/05/1916

Affiliation

British Army



FOUNDED IN 1828

GLASNEVIN TRUST

INCORPORATING: DARDISTOWN GLASNEVIN
GOLDENBRIDGE NEWLANDS CROSS PALMERSTOWN

Glasnevin Trust - 1916 List

Initials (Grave Record)

A

Forename (Grave Record)

ANDREW

Surname (Grave Record)

McDONNELL

Date of Death (Grave Record)

26/04/1916

Affiliation

Civilian



FOUNDED IN 1828

GLASNEVIN TRUST

INCORPORATING: DARDISTOWN GLASNEVIN
GOLDENBRIDGE NEWLANDS CROSS PALMERSTOWN

Glasnevin Trust - 1916 List

Initials (Grave Record)

W

Forename (Grave Record)

WILLIAM

Surname (Grave Record)

McDOWELL

Date of Death (Grave Record)

24/04/1916

Affiliation

Irish Volunteers



FOUNDED IN 1828

GLASNEVIN TRUST

INCORPORATING: DARDISTOWN GLASNEVIN
GOLDENBRIDGE NEWLANDS CROSS PALMERSTOWN

Glasnevin Trust - 1916 List

Initials (Grave Record)

J

Forename (Grave Record)

JOHN

Surname (Grave Record)

McELVERY

Date of Death (Grave Record)

27/04/1916

Affiliation

Civilian



FOUNDED IN 1828

GLASNEVIN TRUST

INCORPORATING: DARDISTOWN GLASNEVIN
GOLDENBRIDGE NEWLANDS CROSS PALMERSTOWN

Glasnevin Trust - 1916 List

Initials (Grave Record)

E

Forename (Grave Record)

EDWARD

Surname (Grave Record)

McGALEY

Date of Death (Grave Record)

26/04/1916

Affiliation

Civilian



FOUNDED IN 1828

GLASNEVIN TRUST

INCORPORATING: DARDISTOWN GLASNEVIN
GOLDENBRIDGE NEWLANDS CROSS PALMERSTOWN

Glasnevin Trust - 1916 List

Initials (Grave Record)

C

Forename (Grave Record)

CHARLES

Surname (Grave Record)

McGEE

Date of Death (Grave Record)

24/04/1916

Affiliation

Royal Irish Constabulary



FOUNDED IN 1828

GLASNEVIN TRUST

INCORPORATING: DARDISTOWN GLASNEVIN
GOLDENBRIDGE NEWLANDS CROSS PALMERSTOWN

Glasnevin Trust - 1916 List

Initials (Grave Record)

M

Forename (Grave Record)

MARGARET

Surname (Grave Record)

McGUINNESS

Date of Death (Grave Record)

03/05/1916

Affiliation

Civilian



FOUNDED IN 1828

GLASNEVIN TRUST

INCORPORATING: DARDISTOWN GLASNEVIN
GOLDENBRIDGE NEWLANDS CROSS PALMERSTOWN

Glasnevin Trust - 1916 List

Initials (Grave Record)

R

Forename (Grave Record)

RICHARD

Surname (Grave Record)

McHALE

Date of Death (Grave Record)

28/04/1916

Affiliation

Royal Irish Constabulary



FOUNDED IN 1828

GLASNEVIN TRUST

INCORPORATING: DARDISTOWN GLASNEVIN
GOLDENBRIDGE NEWLANDS CROSS PALMERSTOWN

Glasnevin Trust - 1916 List

Initials (Grave Record)

P

Forename (Grave Record)

PATRICK

Surname (Grave Record)

McINTYRE

Date of Death (Grave Record)

26/04/1916

Affiliation

Civilian



FOUNDED IN 1828

GLASNEVIN TRUST

INCORPORATING: DARDISTOWN GLASNEVIN
GOLDENBRIDGE NEWLANDS CROSS PALMERSTOWN

Glasnevin Trust - 1916 List

Initials (Grave Record)

B

Forename (Grave Record)

BRIDGET

Surname (Grave Record)

McKANE

Date of Death (Grave Record)

28/04/1916

Affiliation

Civilian



FOUNDED IN 1828

GLASNEVIN TRUST

INCORPORATING: DARDISTOWN GLASNEVIN
GOLDENBRIDGE NEWLANDS CROSS PALMERSTOWN

Glasnevin Trust - 1916 List

Initials (Grave Record)

M

Forename (Grave Record)

MICHAEL

Surname (Grave Record)

McKILLOP

Date of Death (Grave Record)

27/04/1916

Affiliation

Civilian



FOUNDED IN 1828

GLASNEVIN TRUST

INCORPORATING: DARDISTOWN GLASNEVIN
GOLDENBRIDGE NEWLANDS CROSS PALMERSTOWN

Glasnevin Trust - 1916 List

Initials (Grave Record)

J

Forename (Grave Record)

JAMES

Surname (Grave Record)

McLOUGHLIN

Date of Death (Grave Record)

27/04/1916

Affiliation

Civilian



FOUNDED IN 1828

GLASNEVIN TRUST

INCORPORATING: DARDISTOWN GLASNEVIN
GOLDENBRIDGE NEWLANDS CROSS PALMERSTOWN

Glasnevin Trust - 1916 List

Initials (Grave Record)

R

Forename (Grave Record)

RAPHAEL

Surname (Grave Record)

McLOUGHLIN

Date of Death (Grave Record)

30/04/1916

Affiliation

Civilian



FOUNDED IN 1828

GLASNEVIN TRUST

INCORPORATING: DARDISTOWN GLASNEVIN
GOLDENBRIDGE NEWLANDS CROSS PALMERSTOWN

Glasnevin Trust - 1916 List

Initials (Grave Record)

P

Forename (Grave Record)

PATRICK

Surname (Grave Record)

McMANUS

Date of Death (Grave Record)

29/04/1916

Affiliation

Civilian



FOUNDED IN 1828

GLASNEVIN TRUST

INCORPORATING: DARDISTOWN GLASNEVIN
GOLDENBRIDGE NEWLANDS CROSS PALMERSTOWN

Glasnevin Trust - 1916 List

Initials (Grave Record)

J

Forename (Grave Record)

JOHN

Surname (Grave Record)

MEAGHER

Date of Death (Grave Record)

28/04/1916

Affiliation

Civilian



FOUNDED IN 1828

GLASNEVIN TRUST

INCORPORATING: DARDISTOWN GLASNEVIN
GOLDENBRIDGE NEWLANDS CROSS PALMERSTOWN

Glasnevin Trust - 1916 List

Initials (Grave Record)

J

Forename (Grave Record)

JOHN

Surname (Grave Record)

MEEGAN

Date of Death (Grave Record)

27/04/1916

Affiliation

Civilian



FOUNDED IN 1828

GLASNEVIN TRUST

INCORPORATING: DARDISTOWN GLASNEVIN
GOLDENBRIDGE NEWLANDS CROSS PALMERSTOWN

Glasnevin Trust - 1916 List

Initials (Grave Record)

T

Forename (Grave Record)

THOMAS

Surname (Grave Record)

MELEADY

Date of Death (Grave Record)

29/04/1916

Affiliation

Civilian



FOUNDED IN 1828

GLASNEVIN TRUST

INCORPORATING: DARDISTOWN GLASNEVIN
GOLDENBRIDGE NEWLANDS CROSS PALMERSTOWN

Glasnevin Trust - 1916 List

Initials (Grave Record)

J

Forename (Grave Record)

JULIA

Surname (Grave Record)

MERON

Date of Death (Grave Record)

28/04/1916

Affiliation

Civilian



FOUNDED IN 1828

GLASNEVIN TRUST

INCORPORATING: DARDISTOWN GLASNEVIN
GOLDENBRIDGE NEWLANDS CROSS PALMERSTOWN

Glasnevin Trust - 1916 List

Initials (Grave Record)

T H

Forename (Grave Record)

THOMAS HENRY

Surname (Grave Record)

MILLER

Date of Death (Grave Record)

26/04/1916

Affiliation

British Army



FOUNDED IN 1828

GLASNEVIN TRUST

INCORPORATING: DARDISTOWN GLASNEVIN
GOLDENBRIDGE NEWLANDS CROSS PALMERSTOWN

Glasnevin Trust - 1916 List

Initials (Grave Record)

C

Forename (Grave Record)

CHRISTOPHER

Surname (Grave Record)

MILLER

Date of Death (Grave Record)

28/04/1916

Affiliation

Royal Irish Constabulary



FOUNDED IN 1828

GLASNEVIN TRUST

INCORPORATING: DARDISTOWN GLASNEVIN
GOLDENBRIDGE NEWLANDS CROSS PALMERSTOWN

Glasnevin Trust - 1916 List

Initials (Grave Record)

C

Forename (Grave Record)

CHARLES

Surname (Grave Record)

MONAHAN

Date of Death (Grave Record)

21/04/1916

Affiliation

Irish Volunteers



FOUNDED IN 1828

GLASNEVIN TRUST

INCORPORATING: DARDISTOWN GLASNEVIN
GOLDENBRIDGE NEWLANDS CROSS PALMERSTOWN

Glasnevin Trust - 1916 List

Initials (Grave Record)

C

Forename (Grave Record)

CHRISTOPHER

Surname (Grave Record)

MOORE

Date of Death (Grave Record)

26/04/1916

Affiliation

British Army



FOUNDED IN 1828

GLASNEVIN TRUST

INCORPORATING: DARDISTOWN GLASNEVIN
GOLDENBRIDGE NEWLANDS CROSS PALMERSTOWN

Glasnevin Trust - 1916 List

Initials (Grave Record)

W

Forename (Grave Record)

WILLIAM

Surname (Grave Record)

MOORE

Date of Death (Grave Record)

26/04/1916

Affiliation

Civilian



FOUNDED IN 1828

GLASNEVIN TRUST

INCORPORATING: DARDISTOWN GLASNEVIN
GOLDENBRIDGE NEWLANDS CROSS PALMERSTOWN

Glasnevin Trust - 1916 List

Initials (Grave Record)

J

Forename (Grave Record)

JAMES

Surname (Grave Record)

MOORE

Date of Death (Grave Record)

29/04/1916

Affiliation

Civilian



FOUNDED IN 1828

GLASNEVIN TRUST

INCORPORATING: DARDISTOWN GLASNEVIN
GOLDENBRIDGE NEWLANDS CROSS PALMERSTOWN

Glasnevin Trust - 1916 List

Initials (Grave Record)

E

Forename (Grave Record)

ELIZABETH

Surname (Grave Record)

MORAN

Date of Death (Grave Record)

29/04/1916

Affiliation

Civilian



FOUNDED IN 1828

GLASNEVIN TRUST

INCORPORATING: DARDISTOWN GLASNEVIN
GOLDENBRIDGE NEWLANDS CROSS PALMERSTOWN

Glasnevin Trust - 1916 List

Initials (Grave Record)

M

Forename (Grave Record)

MARY

Surname (Grave Record)

MORRIS

Date of Death (Grave Record)

29/04/1916

Affiliation

Civilian



FOUNDED IN 1828

GLASNEVIN TRUST

INCORPORATING: DARDISTOWN GLASNEVIN
GOLDENBRIDGE NEWLANDS CROSS PALMERSTOWN

Glasnevin Trust - 1916 List

Initials (Grave Record)

N

Forename (Grave Record)

NATHANIEL

Surname (Grave Record)

MORTON

Date of Death (Grave Record)

29/04/1916

Affiliation

British Army



FOUNDED IN 1828

GLASNEVIN TRUST

INCORPORATING: DARDISTOWN GLASNEVIN
GOLDENBRIDGE NEWLANDS CROSS PALMERSTOWN

Glasnevin Trust - 1916 List

Initials (Grave Record)

J

Forename (Grave Record)

JOHN

Surname (Grave Record)

MULHERN

Date of Death (Grave Record)

24/04/1916

Affiliation

British Army



FOUNDED IN 1828

GLASNEVIN TRUST

INCORPORATING: DARDISTOWN GLASNEVIN
GOLDENBRIDGE NEWLANDS CROSS PALMERSTOWN

Glasnevin Trust - 1916 List

Initials (Grave Record)

W

Forename (Grave Record)

WILLIAM

Surname (Grave Record)

MULLEN

Date of Death (Grave Record)

28/04/1916

Affiliation

Civilian



FOUNDED IN 1828

GLASNEVIN TRUST

INCORPORATING: DARDISTOWN GLASNEVIN
GOLDENBRIDGE NEWLANDS CROSS PALMERSTOWN

Glasnevin Trust - 1916 List

Initials (Grave Record)

L

Forename (Grave Record)

LAURENCE

Surname (Grave Record)

MULLIGAN

Date of Death (Grave Record)

01/05/1916

Affiliation

Civilian



FOUNDED IN 1828

GLASNEVIN TRUST

INCORPORATING: DARDISTOWN GLASNEVIN
GOLDENBRIDGE NEWLANDS CROSS PALMERSTOWN

Glasnevin Trust - 1916 List

Initials (Grave Record)

W

Forename (Grave Record)

WILLIAM

Surname (Grave Record)

MULRANEY

Date of Death (Grave Record)

26/04/1916

Affiliation

British Army



FOUNDED IN 1828

GLASNEVIN TRUST

INCORPORATING: DARDISTOWN GLASNEVIN
GOLDENBRIDGE NEWLANDS CROSS PALMERSTOWN

Glasnevin Trust - 1916 List

Initials (Grave Record)

JA

Forename (Grave Record)

JAMES ARTHUR

Surname (Grave Record)

MULVEY

Date of Death (Grave Record)

24/04/1916

Affiliation

British Army



FOUNDED IN 1828

GLASNEVIN TRUST

INCORPORATING: DARDISTOWN GLASNEVIN
GOLDENBRIDGE NEWLANDS CROSS PALMERSTOWN

Glasnevin Trust - 1916 List

Initials (Grave Record)

M

Forename (Grave Record)

MICHEAL

Surname (Grave Record)

MULVIHILL

Date of Death (Grave Record)

29/04/1916

Affiliation

Irish Volunteers



FOUNDED IN 1828

GLASNEVIN TRUST

INCORPORATING: DARDISTOWN GLASNEVIN
GOLDENBRIDGE NEWLANDS CROSS PALMERSTOWN

Glasnevin Trust - 1916 List

Initials (Grave Record)

E

Forename (Grave Record)

EDWARD

Surname (Grave Record)

MURPHY

Date of Death (Grave Record)

25/04/1916

Affiliation

Civilian



FOUNDED IN 1828

GLASNEVIN TRUST

INCORPORATING: DARDISTOWN GLASNEVIN
GOLDENBRIDGE NEWLANDS CROSS PALMERSTOWN

Glasnevin Trust - 1916 List

Initials (Grave Record)

R

Forename (Grave Record)

RICHARD

Surname (Grave Record)

MURPHY

Date of Death (Grave Record)

26/04/1916

Affiliation

Irish Volunteers



FOUNDED IN 1828

GLASNEVIN TRUST

INCORPORATING: DARDISTOWN GLASNEVIN
GOLDENBRIDGE NEWLANDS CROSS PALMERSTOWN

Glasnevin Trust - 1916 List

Initials (Grave Record)

J

Forename (Grave Record)

JOHN

Surname (Grave Record)

MURPHY

Date of Death (Grave Record)

29/04/1916

Affiliation

Civilian



FOUNDED IN 1828

GLASNEVIN TRUST

INCORPORATING: DARDISTOWN GLASNEVIN
GOLDENBRIDGE NEWLANDS CROSS PALMERSTOWN

Glasnevin Trust - 1916 List

Initials (Grave Record)

G

Forename (Grave Record)

GEORGINA

Surname (Grave Record)

MURPHY

Date of Death (Grave Record)

29/04/1916

Affiliation

Civilian



FOUNDED IN 1828

GLASNEVIN TRUST

INCORPORATING: DARDISTOWN GLASNEVIN
GOLDENBRIDGE NEWLANDS CROSS PALMERSTOWN

Glasnevin Trust - 1916 List

Initials (Grave Record)

C

Forename (Grave Record)

CATHERINE

Surname (Grave Record)

MURPHY

Date of Death (Grave Record)

07/05/1916

Affiliation

Civilian



FOUNDED IN 1828

GLASNEVIN TRUST

INCORPORATING: DARDISTOWN GLASNEVIN
GOLDENBRIDGE NEWLANDS CROSS PALMERSTOWN

Glasnevin Trust - 1916 List

Initials (Grave Record)

J

Forename (Grave Record)

JOHN

Surname (Grave Record)

MURRAY

Date of Death (Grave Record)

24/04/1916

Affiliation

Civilian



FOUNDED IN 1828

GLASNEVIN TRUST

INCORPORATING: DARDISTOWN GLASNEVIN
GOLDENBRIDGE NEWLANDS CROSS PALMERSTOWN

Glasnevin Trust - 1916 List

Initials (Grave Record)

J

Forename (Grave Record)

JOSEPH

Surname (Grave Record)

MURRAY

Date of Death (Grave Record)

28/04/1916

Affiliation

Civilian



FOUNDED IN 1828

GLASNEVIN TRUST

INCORPORATING: DARDISTOWN GLASNEVIN
GOLDENBRIDGE NEWLANDS CROSS PALMERSTOWN

Glasnevin Trust - 1916 List

Initials (Grave Record)

D J

Forename (Grave Record)

DANIEL JOSEPH

Surname (Grave Record)

MURRAY

Date of Death (Grave Record)

13/05/1916

Affiliation

Irish Volunteers



FOUNDED IN 1828

GLASNEVIN TRUST

INCORPORATING: DARDISTOWN GLASNEVIN
GOLDENBRIDGE NEWLANDS CROSS PALMERSTOWN

Glasnevin Trust - 1916 List

Initials (Grave Record)

A

Forename (Grave Record)

ANNIE

Surname (Grave Record)

MYERS

Date of Death (Grave Record)

27/04/1916

Affiliation

Civilian



FOUNDED IN 1828

GLASNEVIN TRUST

INCORPORATING: DARDISTOWN GLASNEVIN
GOLDENBRIDGE NEWLANDS CROSS PALMERSTOWN

Glasnevin Trust - 1916 List

Initials (Grave Record)

M

Forename (Grave Record)

MARGARET

Surname (Grave Record)

NAYLOR

Date of Death (Grave Record)

29/04/1916

Affiliation

Civilian



FOUNDED IN 1828

GLASNEVIN TRUST

INCORPORATING: DARDISTOWN GLASNEVIN
GOLDENBRIDGE NEWLANDS CROSS PALMERSTOWN

Glasnevin Trust - 1916 List

Initials (Grave Record)

J

Forename (Grave Record)

JOHN

Surname (Grave Record)

NEAL

Date of Death (Grave Record)

Affiliation

Civilian



FOUNDED IN 1828

GLASNEVIN TRUST

INCORPORATING: DARDISTOWN GLASNEVIN
GOLDENBRIDGE NEWLANDS CROSS PALMERSTOWN

Glasnevin Trust - 1916 List

Initials (Grave Record)

P

Forename (Grave Record)

PATRICK

Surname (Grave Record)

NEALAN

Date of Death (Grave Record)

18/06/1916

Affiliation

Civilian



FOUNDED IN 1828

GLASNEVIN TRUST

INCORPORATING: DARDISTOWN GLASNEVIN
GOLDENBRIDGE NEWLANDS CROSS PALMERSTOWN

Glasnevin Trust - 1916 List

Initials (Grave Record)

J C

Forename (Grave Record)

JAMES CRAWFORD

Surname (Grave Record)

NEIL

Date of Death (Grave Record)

10/05/1916

Affiliation

Civilian



FOUNDED IN 1828

GLASNEVIN TRUST

INCORPORATING: DARDISTOWN GLASNEVIN
GOLDENBRIDGE NEWLANDS CROSS PALMERSTOWN

Glasnevin Trust - 1916 List

Initials (Grave Record)

G A

Forename (Grave Record)

GERALD ALOYSIUS

Surname (Grave Record)

NEILAN

Date of Death (Grave Record)

24/04/1916

Affiliation

British Army



FOUNDED IN 1828

GLASNEVIN TRUST

INCORPORATING: DARDISTOWN GLASNEVIN
GOLDENBRIDGE NEWLANDS CROSS PALMERSTOWN

Glasnevin Trust - 1916 List

Initials (Grave Record)

M

Forename (Grave Record)

MARY

Surname (Grave Record)

NEILL

Date of Death (Grave Record)

30/04/1916

Affiliation

Civilian



FOUNDED IN 1828

GLASNEVIN TRUST

INCORPORATING: DARDISTOWN GLASNEVIN
GOLDENBRIDGE NEWLANDS CROSS PALMERSTOWN

Glasnevin Trust - 1916 List

Initials (Grave Record)

A

Forename (Grave Record)

ALBERT

Surname (Grave Record)

NEWLAND

Date of Death (Grave Record)

02/05/1916

Affiliation

British Army



FOUNDED IN 1828

GLASNEVIN TRUST

INCORPORATING: DARDISTOWN GLASNEVIN
GOLDENBRIDGE NEWLANDS CROSS PALMERSTOWN

Glasnevin Trust - 1916 List

Initials (Grave Record)

J

Forename (Grave Record)

JAMES

Surname (Grave Record)

NOLAN

Date of Death (Grave Record)

24/04/1916

Affiliation

British Army



FOUNDED IN 1828

GLASNEVIN TRUST

INCORPORATING: DARDISTOWN GLASNEVIN
GOLDENBRIDGE NEWLANDS CROSS PALMERSTOWN

Glasnevin Trust - 1916 List

Initials (Grave Record)

M

Forename (Grave Record)

MARGARET

Surname (Grave Record)

NOLAN

Date of Death (Grave Record)

25/04/1916

Affiliation

Civilian



FOUNDED IN 1828

GLASNEVIN TRUST

INCORPORATING: DARDISTOWN GLASNEVIN
GOLDENBRIDGE NEWLANDS CROSS PALMERSTOWN

Glasnevin Trust - 1916 List

Initials (Grave Record)

M

Forename (Grave Record)

MICHAEL

Surname (Grave Record)

NUNAN

Date of Death (Grave Record)

29/04/1916

Affiliation

Civilian



FOUNDED IN 1828

GLASNEVIN TRUST

INCORPORATING: DARDISTOWN GLASNEVIN
GOLDENBRIDGE NEWLANDS CROSS PALMERSTOWN

Glasnevin Trust - 1916 List

Initials (Grave Record)

R F

Forename (Grave Record)

ROBERT F.

Surname (Grave Record)

O'BEIRNE

Date of Death (Grave Record)

28/04/1916

Affiliation

Civilian



FOUNDED IN 1828

GLASNEVIN TRUST

INCORPORATING: DARDISTOWN GLASNEVIN
GOLDENBRIDGE NEWLANDS CROSS PALMERSTOWN

Glasnevin Trust - 1916 List

Initials (Grave Record)

J

Forename (Grave Record)

JAMES

Surname (Grave Record)

O'BRIEN

Date of Death (Grave Record)

24/04/1916

Affiliation

Dublin Metropolitan Police



FOUNDED IN 1828

GLASNEVIN TRUST

INCORPORATING: DARDISTOWN GLASNEVIN
GOLDENBRIDGE NEWLANDS CROSS PALMERSTOWN

Glasnevin Trust - 1916 List

Initials (Grave Record)

J

Forename (Grave Record)

JOHN

Surname (Grave Record)

O'CALLAGHAN

Date of Death (Grave Record)

Affiliation

Civilian



FOUNDED IN 1828

GLASNEVIN TRUST

INCORPORATING: DARDISTOWN GLASNEVIN
GOLDENBRIDGE NEWLANDS CROSS PALMERSTOWN

Glasnevin Trust - 1916 List

Initials (Grave Record)

R

Forename (Grave Record)

RICHARD

Surname (Grave Record)

O'CARROLL

Date of Death (Grave Record)

05/05/1916

Affiliation

Irish Volunteers



FOUNDED IN 1828

GLASNEVIN TRUST

INCORPORATING: DARDISTOWN GLASNEVIN
GOLDENBRIDGE NEWLANDS CROSS PALMERSTOWN

Glasnevin Trust - 1916 List

Initials (Grave Record)

J

Forename (Grave Record)

JOHN

Surname (Grave Record)

O'CONNOR

Date of Death (Grave Record)

Affiliation

Civilian



FOUNDED IN 1828

GLASNEVIN TRUST

INCORPORATING: DARDISTOWN GLASNEVIN
GOLDENBRIDGE NEWLANDS CROSS PALMERSTOWN

Glasnevin Trust - 1916 List

Initials (Grave Record)

M

Forename (Grave Record)

MICHAEL

Surname (Grave Record)

O'CONNOR

Date of Death (Grave Record)

26/04/1916

Affiliation

Civilian



FOUNDED IN 1828

GLASNEVIN TRUST

INCORPORATING: DARDISTOWN GLASNEVIN
GOLDENBRIDGE NEWLANDS CROSS PALMERSTOWN

Glasnevin Trust - 1916 List

Initials (Grave Record)

P

Forename (Grave Record)

PATRICK

Surname (Grave Record)

O'CONNOR

Date of Death (Grave Record)

28/04/1916

Affiliation

Irish Volunteers



FOUNDED IN 1828

GLASNEVIN TRUST

INCORPORATING: DARDISTOWN GLASNEVIN
GOLDENBRIDGE NEWLANDS CROSS PALMERSTOWN

Glasnevin Trust - 1916 List

Initials (Grave Record)

E

Forename (Grave Record)

ELLEN

Surname (Grave Record)

O'CONNOR

Date of Death (Grave Record)

07/06/1916

Affiliation

Civilian



FOUNDED IN 1828

GLASNEVIN TRUST

INCORPORATING: DARDISTOWN GLASNEVIN
GOLDENBRIDGE NEWLANDS CROSS PALMERSTOWN

Glasnevin Trust - 1916 List

Initials (Grave Record)

J

Forename (Grave Record)

JOHN

Surname (Grave Record)

O'DONOGHUE

Date of Death (Grave Record)

01/05/1916

Affiliation

Civilian



FOUNDED IN 1828

GLASNEVIN TRUST

INCORPORATING: DARDISTOWN GLASNEVIN
GOLDENBRIDGE NEWLANDS CROSS PALMERSTOWN

Glasnevin Trust - 1916 List

Initials (Grave Record)

J

Forename (Grave Record)

JOHN

Surname (Grave Record)

O'DUFFY

Date of Death (Grave Record)

30/04/1916

Affiliation

Civilian



FOUNDED IN 1828

GLASNEVIN TRUST

INCORPORATING: DARDISTOWN GLASNEVIN
GOLDENBRIDGE NEWLANDS CROSS PALMERSTOWN

Glasnevin Trust - 1916 List

Initials (Grave Record)

R

Forename (Grave Record)

RICHARD

Surname (Grave Record)

O'FLAHERTY

Date of Death (Grave Record)

Affiliation

Civilian



FOUNDED IN 1828

GLASNEVIN TRUST

INCORPORATING: DARDISTOWN GLASNEVIN
GOLDENBRIDGE NEWLANDS CROSS PALMERSTOWN

Glasnevin Trust - 1916 List

Initials (Grave Record)

J

Forename (Grave Record)

JOSEPH

Surname (Grave Record)

O'FLAHERTY

Date of Death (Grave Record)

25/04/1916

Affiliation

Civilian



FOUNDED IN 1828

GLASNEVIN TRUST

INCORPORATING: DARDISTOWN GLASNEVIN
GOLDENBRIDGE NEWLANDS CROSS PALMERSTOWN

Glasnevin Trust - 1916 List

Initials (Grave Record)

P J

Forename (Grave Record)

PATRICK JOSEPH

Surname (Grave Record)

O'FLANAGAN

Date of Death (Grave Record)

29/04/1916

Affiliation

Irish Volunteers



FOUNDED IN 1828

GLASNEVIN TRUST

INCORPORATING: DARDISTOWN GLASNEVIN
GOLDENBRIDGE NEWLANDS CROSS PALMERSTOWN

Glasnevin Trust - 1916 List

Initials (Grave Record)

C

Forename (Grave Record)

CHARLES

Surname (Grave Record)

O'GORMAN

Date of Death (Grave Record)

24/04/1916

Affiliation

British Army



FOUNDED IN 1828

GLASNEVIN TRUST

INCORPORATING: DARDISTOWN GLASNEVIN
GOLDENBRIDGE NEWLANDS CROSS PALMERSTOWN

Glasnevin Trust - 1916 List

Initials (Grave Record)

P

Forename (Grave Record)

PATRICK

Surname (Grave Record)

O'GRADY

Date of Death (Grave Record)

24/04/1916

Affiliation

Civilian



FOUNDED IN 1828

GLASNEVIN TRUST

INCORPORATING: DARDISTOWN GLASNEVIN
GOLDENBRIDGE NEWLANDS CROSS PALMERSTOWN

Glasnevin Trust - 1916 List

Initials (Grave Record)

J

Forename (Grave Record)

JOHN

Surname (Grave Record)

O'GRADY

Date of Death (Grave Record)

29/04/1916

Affiliation

Irish Volunteers



FOUNDED IN 1828

GLASNEVIN TRUST

INCORPORATING: DARDISTOWN GLASNEVIN
GOLDENBRIDGE NEWLANDS CROSS PALMERSTOWN

Glasnevin Trust - 1916 List

Initials (Grave Record)

E

Forename (Grave Record)

EDWARD

Surname (Grave Record)

O'GRADY

Date of Death (Grave Record)

02/05/1916

Affiliation

Civilian



FOUNDED IN 1828

GLASNEVIN TRUST

INCORPORATING: DARDISTOWN GLASNEVIN
GOLDENBRIDGE NEWLANDS CROSS PALMERSTOWN

Glasnevin Trust - 1916 List

Initials (Grave Record)

M

Forename (Grave Record)

MICHAEL

Surname (Grave Record)

O'HANRAHAN

Date of Death (Grave Record)

04/05/1916

Affiliation

Irish Volunteers



FOUNDED IN 1828

GLASNEVIN TRUST

INCORPORATING: DARDISTOWN GLASNEVIN
GOLDENBRIDGE NEWLANDS CROSS PALMERSTOWN

Glasnevin Trust - 1916 List

Initials (Grave Record)

M

Forename (Grave Record)

MARTIN

Surname (Grave Record)

O'LEARY

Date of Death (Grave Record)

27/04/1916

Affiliation

Civilian



FOUNDED IN 1828

GLASNEVIN TRUST

INCORPORATING: DARDISTOWN GLASNEVIN
GOLDENBRIDGE NEWLANDS CROSS PALMERSTOWN

Glasnevin Trust - 1916 List

Initials (Grave Record)

W

Forename (Grave Record)

WILLIAM

Surname (Grave Record)

O'NEILL

Date of Death (Grave Record)

29/04/1916

Affiliation

Civilian



FOUNDED IN 1828

GLASNEVIN TRUST

INCORPORATING: DARDISTOWN GLASNEVIN
GOLDENBRIDGE NEWLANDS CROSS PALMERSTOWN

Glasnevin Trust - 1916 List

Initials (Grave Record)

J

Forename (Grave Record)

JOHN

Surname (Grave Record)

O'REILLY

Date of Death (Grave Record)

24/04/1916

Affiliation

Irish Citizen Army



FOUNDED IN 1828

GLASNEVIN TRUST

INCORPORATING: DARDISTOWN GLASNEVIN
GOLDENBRIDGE NEWLANDS CROSS PALMERSTOWN

Glasnevin Trust - 1916 List

Initials (Grave Record)

R

Forename (Grave Record)

RICHARD

Surname (Grave Record)

O'REILLY

Date of Death (Grave Record)

24/04/1916

Affiliation

Irish Volunteers



FOUNDED IN 1828

GLASNEVIN TRUST

INCORPORATING: DARDISTOWN GLASNEVIN
GOLDENBRIDGE NEWLANDS CROSS PALMERSTOWN

Glasnevin Trust - 1916 List

Initials (Grave Record)

T J

Forename (Grave Record)

THOMAS JOSEPH

Surname (Grave Record)

O'REILLY

Date of Death (Grave Record)

27/04/1916

Affiliation

Irish Citizen Army



FOUNDED IN 1828

GLASNEVIN TRUST

INCORPORATING: DARDISTOWN GLASNEVIN
GOLDENBRIDGE NEWLANDS CROSS PALMERSTOWN

Glasnevin Trust - 1916 List

Initials (Grave Record)

Forename (Grave Record)

Surname (Grave Record)

Date of Death (Grave Record)

Affiliation



FOUNDED IN 1828

GLASNEVIN TRUST

INCORPORATING: DARDISTOWN GLASNEVIN
GOLDENBRIDGE NEWLANDS CROSS PALMERSTOWN

Glasnevin Trust - 1916 List

Initials (Grave Record)

M J

Forename (Grave Record)

MICHAEL JOSEPH

Surname (Grave Record)

O"RAHILLY

Date of Death (Grave Record)

29/04/1916

Affiliation

Irish Volunteers



FOUNDED IN 1828

GLASNEVIN TRUST

INCORPORATING: DARDISTOWN GLASNEVIN
GOLDENBRIDGE NEWLANDS CROSS PALMERSTOWN

Glasnevin Trust - 1916 List

Initials (Grave Record)

C

Forename (Grave Record)

CLARENCE

Surname (Grave Record)

OSBORNE

Date of Death (Grave Record)

27/04/1916

Affiliation

British Army



FOUNDED IN 1828

GLASNEVIN TRUST

INCORPORATING: DARDISTOWN GLASNEVIN
GOLDENBRIDGE NEWLANDS CROSS PALMERSTOWN

Glasnevin Trust - 1916 List

Initials (Grave Record)

J

Forename (Grave Record)

JOHN

Surname (Grave Record)

OWENS

Date of Death (Grave Record)

24/04/1916

Affiliation

Irish Volunteers



FOUNDED IN 1828

GLASNEVIN TRUST

INCORPORATING: DARDISTOWN GLASNEVIN
GOLDENBRIDGE NEWLANDS CROSS PALMERSTOWN

Glasnevin Trust - 1916 List

Initials (Grave Record)

P H

Forename (Grave Record)

PATRICK H.

Surname (Grave Record)

PEARSE

Date of Death (Grave Record)

03/05/1916

Affiliation

Irish Volunteers



FOUNDED IN 1828

GLASNEVIN TRUST

INCORPORATING: DARDISTOWN GLASNEVIN
GOLDENBRIDGE NEWLANDS CROSS PALMERSTOWN

Glasnevin Trust - 1916 List

Initials (Grave Record)

W

Forename (Grave Record)

WILLIAM

Surname (Grave Record)

PEARSE

Date of Death (Grave Record)

04/05/1916

Affiliation

Irish Volunteers



FOUNDED IN 1828

GLASNEVIN TRUST

INCORPORATING: DARDISTOWN GLASNEVIN
GOLDENBRIDGE NEWLANDS CROSS PALMERSTOWN

Glasnevin Trust - 1916 List

Initials (Grave Record)

T

Forename (Grave Record)

THOMAS

Surname (Grave Record)

PENTONY

Date of Death (Grave Record)

29/04/1916

Affiliation

Civilian



FOUNDED IN 1828

GLASNEVIN TRUST

INCORPORATING: DARDISTOWN GLASNEVIN
GOLDENBRIDGE NEWLANDS CROSS PALMERSTOWN

Glasnevin Trust - 1916 List

Initials (Grave Record)

P V C

Forename (Grave Record)

PERCY VIVIAN CLAUDE

Surname (Grave Record)

PERRY

Date of Death (Grave Record)

26/04/1916

Affiliation

British Army



FOUNDED IN 1828

GLASNEVIN TRUST

INCORPORATING: DARDISTOWN GLASNEVIN
GOLDENBRIDGE NEWLANDS CROSS PALMERSTOWN

Glasnevin Trust - 1916 List

Initials (Grave Record)

H

Forename (Grave Record)

HARRY

Surname (Grave Record)

PHILLIPS

Date of Death (Grave Record)

25/04/1916

Affiliation

British Army



FOUNDED IN 1828

GLASNEVIN TRUST

INCORPORATING: DARDISTOWN GLASNEVIN
GOLDENBRIDGE NEWLANDS CROSS PALMERSTOWN

Glasnevin Trust - 1916 List

Initials (Grave Record)

G

Forename (Grave Record)

GEORGE

Surname (Grave Record)

PIERCE

Date of Death (Grave Record)

29/04/1916

Affiliation

Civilian



FOUNDED IN 1828

GLASNEVIN TRUST

INCORPORATING: DARDISTOWN GLASNEVIN
GOLDENBRIDGE NEWLANDS CROSS PALMERSTOWN

Glasnevin Trust - 1916 List

Initials (Grave Record)

GV

Forename (Grave Record)

GUY VICKERY

Surname (Grave Record)

PINFIELD

Date of Death (Grave Record)

24/04/1916

Affiliation

British Army



FOUNDED IN 1828

GLASNEVIN TRUST

INCORPORATING: DARDISTOWN GLASNEVIN
GOLDENBRIDGE NEWLANDS CROSS PALMERSTOWN

Glasnevin Trust - 1916 List

Initials (Grave Record)

G. A.

Forename (Grave Record)

GEORGE ALEXANDER

Surname (Grave Record)

PLAYFAIR

Date of Death (Grave Record)

25/04/1916

Affiliation

Civilian



FOUNDED IN 1828

GLASNEVIN TRUST

INCORPORATING: DARDISTOWN GLASNEVIN
GOLDENBRIDGE NEWLANDS CROSS PALMERSTOWN

Glasnevin Trust - 1916 List

Initials (Grave Record)

J M

Forename (Grave Record)

JOSEPH MARY

Surname (Grave Record)

PLUNKETT

Date of Death (Grave Record)

04/05/1916

Affiliation

Irish Volunteers



FOUNDED IN 1828

GLASNEVIN TRUST

INCORPORATING: DARDISTOWN GLASNEVIN
GOLDENBRIDGE NEWLANDS CROSS PALMERSTOWN

Glasnevin Trust - 1916 List

Initials (Grave Record)

J

Forename (Grave Record)

JAMES

Surname (Grave Record)

POWER

Date of Death (Grave Record)

30/04/1916

Affiliation

Civilian



FOUNDED IN 1828

GLASNEVIN TRUST

INCORPORATING: DARDISTOWN GLASNEVIN
GOLDENBRIDGE NEWLANDS CROSS PALMERSTOWN

Glasnevin Trust - 1916 List

Initials (Grave Record)

C

Forename (Grave Record)

CHRISTINA

Surname (Grave Record)

PURCELL

Date of Death (Grave Record)

10/06/1916

Affiliation

Civilian



FOUNDED IN 1828

GLASNEVIN TRUST

INCORPORATING: DARDISTOWN GLASNEVIN
GOLDENBRIDGE NEWLANDS CROSS PALMERSTOWN

Glasnevin Trust - 1916 List

Initials (Grave Record)

P A

Forename (Grave Record)

PHILIP ADDISON

Surname (Grave Record)

PURSER

Date of Death (Grave Record)

30/04/1916

Affiliation

British Army



FOUNDED IN 1828

GLASNEVIN TRUST

INCORPORATING: DARDISTOWN GLASNEVIN
GOLDENBRIDGE NEWLANDS CROSS PALMERSTOWN

Glasnevin Trust - 1916 List

Initials (Grave Record)

J

Forename (Grave Record)

JAMES

Surname (Grave Record)

QUINN

Date of Death (Grave Record)

24/04/1916

Affiliation

Irish Volunteers



FOUNDED IN 1828

GLASNEVIN TRUST

INCORPORATING: DARDISTOWN GLASNEVIN
GOLDENBRIDGE NEWLANDS CROSS PALMERSTOWN

Glasnevin Trust - 1916 List

Initials (Grave Record)

E

Forename (Grave Record)

ELIZABETH

Surname (Grave Record)

QUIRK

Date of Death (Grave Record)

27/04/1916

Affiliation

Civilian



FOUNDED IN 1828

GLASNEVIN TRUST

INCORPORATING: DARDISTOWN GLASNEVIN
GOLDENBRIDGE NEWLANDS CROSS PALMERSTOWN

Glasnevin Trust - 1916 List

Initials (Grave Record)

T

Forename (Grave Record)

THOMAS

Surname (Grave Record)

RAFFERTY

Date of Death (Grave Record)

29/04/1916

Affiliation

Irish Volunteers



FOUNDED IN 1828

GLASNEVIN TRUST

INCORPORATING: DARDISTOWN GLASNEVIN
GOLDENBRIDGE NEWLANDS CROSS PALMERSTOWN

Glasnevin Trust - 1916 List

Initials (Grave Record)

A L

Forename (Grave Record)

ALAN LIVINGSTONE

Surname (Grave Record)

RAMSAY

Date of Death (Grave Record)

24/04/1916

Affiliation

British Army



FOUNDED IN 1828

GLASNEVIN TRUST

INCORPORATING: DARDISTOWN GLASNEVIN
GOLDENBRIDGE NEWLANDS CROSS PALMERSTOWN

Glasnevin Trust - 1916 List

Initials (Grave Record)

M

Forename (Grave Record)

MARY

Surname (Grave Record)

REDMOND

Date of Death (Grave Record)

27/04/1916

Affiliation

Civilian



FOUNDED IN 1828

GLASNEVIN TRUST

INCORPORATING: DARDISTOWN GLASNEVIN
GOLDENBRIDGE NEWLANDS CROSS PALMERSTOWN

Glasnevin Trust - 1916 List

Initials (Grave Record)

C

Forename (Grave Record)

CHRISTOPHER

Surname (Grave Record)

REDMOND

Date of Death (Grave Record)

01/05/1916

Affiliation

Civilian



FOUNDED IN 1828

GLASNEVIN TRUST

INCORPORATING: DARDISTOWN GLASNEVIN
GOLDENBRIDGE NEWLANDS CROSS PALMERSTOWN

Glasnevin Trust - 1916 List

Initials (Grave Record)

Forename (Grave Record)

Surname (Grave Record)

Date of Death (Grave Record)

Affiliation



FOUNDED IN 1828

GLASNEVIN TRUST

INCORPORATING: DARDISTOWN GLASNEVIN
GOLDENBRIDGE NEWLANDS CROSS PALMERSTOWN

Glasnevin Trust - 1916 List

Initials (Grave Record)

J

Forename (Grave Record)

JOHN

Surname (Grave Record)

REILLY

Date of Death (Grave Record)

28/04/1916

Affiliation

Civilian



FOUNDED IN 1828

GLASNEVIN TRUST

INCORPORATING: DARDISTOWN GLASNEVIN
GOLDENBRIDGE NEWLANDS CROSS PALMERSTOWN

Glasnevin Trust - 1916 List

Initials (Grave Record)

T

Forename (Grave Record)

THOMAS

Surname (Grave Record)

REILLY

Date of Death (Grave Record)

28/04/1916

Affiliation

Civilian



FOUNDED IN 1828

GLASNEVIN TRUST

INCORPORATING: DARDISTOWN GLASNEVIN
GOLDENBRIDGE NEWLANDS CROSS PALMERSTOWN

Glasnevin Trust - 1916 List

Initials (Grave Record)

G

Forename (Grave Record)

GEORGE

Surname (Grave Record)

REYNOLDS

Date of Death (Grave Record)

27/04/1916

Affiliation

Irish Volunteers



FOUNDED IN 1828

GLASNEVIN TRUST

INCORPORATING: DARDISTOWN GLASNEVIN
GOLDENBRIDGE NEWLANDS CROSS PALMERSTOWN

Glasnevin Trust - 1916 List

Initials (Grave Record)

P

Forename (Grave Record)

PATRICK

Surname (Grave Record)

REYNOLDS

Date of Death (Grave Record)

04/08/1916

Affiliation

Civilian



FOUNDED IN 1828

GLASNEVIN TRUST

INCORPORATING: DARDISTOWN GLASNEVIN
GOLDENBRIDGE NEWLANDS CROSS PALMERSTOWN

Glasnevin Trust - 1916 List

Initials (Grave Record)

W J

Forename (Grave Record)

WILLIAM JOHN

Surname (Grave Record)

RICE

Date of Death (Grave Record)

29/04/1916

Affiliation

Civilian



FOUNDED IN 1828

GLASNEVIN TRUST

INCORPORATING: DARDISTOWN GLASNEVIN
GOLDENBRIDGE NEWLANDS CROSS PALMERSTOWN

Glasnevin Trust - 1916 List

Initials (Grave Record)

H

Forename (Grave Record)

HAROLD

Surname (Grave Record)

RODGERS

Date of Death (Grave Record)

27/04/1916

Affiliation

British Army



FOUNDED IN 1828

GLASNEVIN TRUST

INCORPORATING: DARDISTOWN GLASNEVIN
GOLDENBRIDGE NEWLANDS CROSS PALMERSTOWN

Glasnevin Trust - 1916 List

Initials (Grave Record)

T F

Forename (Grave Record)

THOMAS F.

Surname (Grave Record)

ROURKE

Date of Death (Grave Record)

Affiliation

Royal Irish Constabulary



FOUNDED IN 1828

GLASNEVIN TRUST

INCORPORATING: DARDISTOWN GLASNEVIN
GOLDENBRIDGE NEWLANDS CROSS PALMERSTOWN

Glasnevin Trust - 1916 List

Initials (Grave Record)

W N

Forename (Grave Record)

WILLIAM NELSON

Surname (Grave Record)

ROWE

Date of Death (Grave Record)

02/05/1916

Affiliation

Royal Irish Constabulary



FOUNDED IN 1828

GLASNEVIN TRUST

INCORPORATING: DARDISTOWN GLASNEVIN
GOLDENBRIDGE NEWLANDS CROSS PALMERSTOWN

Glasnevin Trust - 1916 List

Initials (Grave Record)

P

Forename (Grave Record)

PATRICK

Surname (Grave Record)

RYAN

Date of Death (Grave Record)

26/04/1916

Affiliation

Civilian



FOUNDED IN 1828

GLASNEVIN TRUST

INCORPORATING: DARDISTOWN GLASNEVIN
GOLDENBRIDGE NEWLANDS CROSS PALMERSTOWN

Glasnevin Trust - 1916 List

Initials (Grave Record)

F

Forename (Grave Record)

FREDERICK

Surname (Grave Record)

RYAN

Date of Death (Grave Record)

26/04/1916

Affiliation

Irish Citizen Army



FOUNDED IN 1828

GLASNEVIN TRUST

INCORPORATING: DARDISTOWN GLASNEVIN
GOLDENBRIDGE NEWLANDS CROSS PALMERSTOWN

Glasnevin Trust - 1916 List

Initials (Grave Record)

G P

Forename (Grave Record)

GEORGE PERCY

Surname (Grave Record)

SAINSBURY

Date of Death (Grave Record)

27/04/1916

Affiliation

Civilian



FOUNDED IN 1828

GLASNEVIN TRUST

INCORPORATING: DARDISTOWN GLASNEVIN
GOLDENBRIDGE NEWLANDS CROSS PALMERSTOWN

Glasnevin Trust - 1916 List

Initials (Grave Record)

F

Forename (Grave Record)

FRANCIS

Surname (Grave Record)

SALMON

Date of Death (Grave Record)

Affiliation

Civilian



FOUNDED IN 1828

GLASNEVIN TRUST

INCORPORATING: DARDISTOWN GLASNEVIN
GOLDENBRIDGE NEWLANDS CROSS PALMERSTOWN

Glasnevin Trust - 1916 List

Initials (Grave Record)

C

Forename (Grave Record)

CHARLES

Surname (Grave Record)

SAUNDERS

Date of Death (Grave Record)

28/04/1916

Affiliation

British Army



FOUNDED IN 1828

GLASNEVIN TRUST

INCORPORATING: DARDISTOWN GLASNEVIN
GOLDENBRIDGE NEWLANDS CROSS PALMERSTOWN

Glasnevin Trust - 1916 List

Initials (Grave Record)

A J

Forename (Grave Record)

ARTHUR JAMES

Surname (Grave Record)

SCARLETT

Date of Death (Grave Record)

24/04/1916

Affiliation

British Army



FOUNDED IN 1828

GLASNEVIN TRUST

INCORPORATING: DARDISTOWN GLASNEVIN
GOLDENBRIDGE NEWLANDS CROSS PALMERSTOWN

Glasnevin Trust - 1916 List

Initials (Grave Record)

A

Forename (Grave Record)

ABSLONE

Surname (Grave Record)

SCHERZINGER

Date of Death (Grave Record)

26/04/1916

Affiliation

Civilian



FOUNDED IN 1828

GLASNEVIN TRUST

INCORPORATING: DARDISTOWN GLASNEVIN
GOLDENBRIDGE NEWLANDS CROSS PALMERSTOWN

Glasnevin Trust - 1916 List

Initials (Grave Record)

W E

Forename (Grave Record)

WALTER ERIC

Surname (Grave Record)

SCOTT

Date of Death (Grave Record)

05/07/1916

Affiliation

Civilian



FOUNDED IN 1828

GLASNEVIN TRUST

INCORPORATING: DARDISTOWN GLASNEVIN
GOLDENBRIDGE NEWLANDS CROSS PALMERSTOWN

Glasnevin Trust - 1916 List

Initials (Grave Record)

J

Forename (Grave Record)

JOHN

Surname (Grave Record)

SHANAGHER

Date of Death (Grave Record)

28/04/1916

Affiliation

Royal Irish Constabulary



FOUNDED IN 1828

GLASNEVIN TRUST

INCORPORATING: DARDISTOWN GLASNEVIN
GOLDENBRIDGE NEWLANDS CROSS PALMERSTOWN

Glasnevin Trust - 1916 List

Initials (Grave Record)

J

Forename (Grave Record)

JOSEPH

Surname (Grave Record)

SHARGINE

Date of Death (Grave Record)

Affiliation

Civilian



FOUNDED IN 1828

GLASNEVIN TRUST

INCORPORATING: DARDISTOWN GLASNEVIN
GOLDENBRIDGE NEWLANDS CROSS PALMERSTOWN

Glasnevin Trust - 1916 List

Initials (Grave Record)

D

Forename (Grave Record)

DANIEL

Surname (Grave Record)

SHEEHAN

Date of Death (Grave Record)

21/04/1916

Affiliation

Irish Volunteers



FOUNDED IN 1828

GLASNEVIN TRUST

INCORPORATING: DARDISTOWN GLASNEVIN
GOLDENBRIDGE NEWLANDS CROSS PALMERSTOWN

Glasnevin Trust - 1916 List

Initials (Grave Record)

F J C

Forename (Grave Record)

FRANCIS JOSEPH CHRISTOPHER

Surname (Grave Record)

SHEEHY-SKEFFINGTON

Date of Death (Grave Record)

26/04/1916

Affiliation

Civilian



FOUNDED IN 1828

GLASNEVIN TRUST

INCORPORATING: DARDISTOWN GLASNEVIN
GOLDENBRIDGE NEWLANDS CROSS PALMERSTOWN

Glasnevin Trust - 1916 List

Initials (Grave Record)

F

Forename (Grave Record)

FLORENCE

Surname (Grave Record)

SHEILS

Date of Death (Grave Record)

24/04/1916

Affiliation

Civilian



FOUNDED IN 1828

GLASNEVIN TRUST

INCORPORATING: DARDISTOWN GLASNEVIN
GOLDENBRIDGE NEWLANDS CROSS PALMERSTOWN

Glasnevin Trust - 1916 List

Initials (Grave Record)

H

Forename (Grave Record)

HENRY

Surname (Grave Record)

SHEPHERD

Date of Death (Grave Record)

24/04/1916

Affiliation

British Army



FOUNDED IN 1828

GLASNEVIN TRUST

INCORPORATING: DARDISTOWN GLASNEVIN
GOLDENBRIDGE NEWLANDS CROSS PALMERSTOWN

Glasnevin Trust - 1916 List

Initials (Grave Record)

J H

Forename (Grave Record)

JOHN HENRY

Surname (Grave Record)

SHERWOOD

Date of Death (Grave Record)

05/05/1916

Affiliation

British Army



FOUNDED IN 1828

GLASNEVIN TRUST

INCORPORATING: DARDISTOWN GLASNEVIN
GOLDENBRIDGE NEWLANDS CROSS PALMERSTOWN

Glasnevin Trust - 1916 List

Initials (Grave Record)

P

Forename (Grave Record)

PATRICK

Surname (Grave Record)

SHORTIS

Date of Death (Grave Record)

28/04/1916

Affiliation

Irish Volunteers



FOUNDED IN 1828

GLASNEVIN TRUST

INCORPORATING: DARDISTOWN GLASNEVIN
GOLDENBRIDGE NEWLANDS CROSS PALMERSTOWN

Glasnevin Trust - 1916 List

Initials (Grave Record)

A

Forename (Grave Record)

ALFRED

Surname (Grave Record)

SIBLEY

Date of Death (Grave Record)

26/04/1916

Affiliation

British Army



FOUNDED IN 1828

GLASNEVIN TRUST

INCORPORATING: DARDISTOWN GLASNEVIN
GOLDENBRIDGE NEWLANDS CROSS PALMERSTOWN

Glasnevin Trust - 1916 List

Initials (Grave Record)

V P

Forename (Grave Record)

VINCENT PAUL

Surname (Grave Record)

SIMPSON

Date of Death (Grave Record)

26/04/1916

Affiliation

Civilian



FOUNDED IN 1828

GLASNEVIN TRUST

INCORPORATING: DARDISTOWN GLASNEVIN
GOLDENBRIDGE NEWLANDS CROSS PALMERSTOWN

Glasnevin Trust - 1916 List

Initials (Grave Record)

A C

Forename (Grave Record)

ARTHUR CHARLES

Surname (Grave Record)

SMITH

Date of Death (Grave Record)

29/04/1916

Affiliation

British Army



FOUNDED IN 1828

GLASNEVIN TRUST

INCORPORATING: DARDISTOWN GLASNEVIN
GOLDENBRIDGE NEWLANDS CROSS PALMERSTOWN

Glasnevin Trust - 1916 List

Initials (Grave Record)

H

Forename (Grave Record)

HENRY

Surname (Grave Record)

SMYTH

Date of Death (Grave Record)

28/04/1916

Affiliation

Royal Irish Constabulary



FOUNDED IN 1828

GLASNEVIN TRUST

INCORPORATING: DARDISTOWN GLASNEVIN
GOLDENBRIDGE NEWLANDS CROSS PALMERSTOWN

Glasnevin Trust - 1916 List

Initials (Grave Record)

E

Forename (Grave Record)

ELIZABETH

Surname (Grave Record)

SMYTH

Date of Death (Grave Record)

30/04/1916

Affiliation

Civilian



FOUNDED IN 1828

GLASNEVIN TRUST

INCORPORATING: DARDISTOWN GLASNEVIN
GOLDENBRIDGE NEWLANDS CROSS PALMERSTOWN

Glasnevin Trust - 1916 List

Initials (Grave Record)

B

Forename (Grave Record)

BERT

Surname (Grave Record)

SPEED

Date of Death (Grave Record)

29/04/1916

Affiliation

British Army



FOUNDED IN 1828

GLASNEVIN TRUST

INCORPORATING: DARDISTOWN GLASNEVIN
GOLDENBRIDGE NEWLANDS CROSS PALMERSTOWN

Glasnevin Trust - 1916 List

Initials (Grave Record)

T

Forename (Grave Record)

TIMOTHY

Surname (Grave Record)

SPELLMAN

Date of Death (Grave Record)

04/05/1916

Affiliation

Civilian



FOUNDED IN 1828

GLASNEVIN TRUST

INCORPORATING: DARDISTOWN GLASNEVIN
GOLDENBRIDGE NEWLANDS CROSS PALMERSTOWN

Glasnevin Trust - 1916 List

Initials (Grave Record)

P

Forename (Grave Record)

PATRICK

Surname (Grave Record)

STEPHENSON

Date of Death (Grave Record)

29/04/1916

Affiliation

Civilian



FOUNDED IN 1828

GLASNEVIN TRUST

INCORPORATING: DARDISTOWN GLASNEVIN
GOLDENBRIDGE NEWLANDS CROSS PALMERSTOWN

Glasnevin Trust - 1916 List

Initials (Grave Record)

B

Forename (Grave Record)

BRIDGET

Surname (Grave Record)

STEWART

Date of Death (Grave Record)

28/04/1916

Affiliation

Civilian



FOUNDED IN 1828

GLASNEVIN TRUST

INCORPORATING: DARDISTOWN GLASNEVIN
GOLDENBRIDGE NEWLANDS CROSS PALMERSTOWN

Glasnevin Trust - 1916 List

Initials (Grave Record)

J

Forename (Grave Record)

JOHN

Surname (Grave Record)

STILLMAN

Date of Death (Grave Record)

27/04/1916

Affiliation

Civilian



FOUNDED IN 1828

GLASNEVIN TRUST

INCORPORATING: DARDISTOWN GLASNEVIN
GOLDENBRIDGE NEWLANDS CROSS PALMERSTOWN

Glasnevin Trust - 1916 List

Initials (Grave Record)

H

Forename (Grave Record)

HOLDEN

Surname (Grave Record)

STODART

Date of Death (Grave Record)

26/04/1916

Affiliation

Civilian



FOUNDED IN 1828

GLASNEVIN TRUST

INCORPORATING: DARDISTOWN GLASNEVIN
GOLDENBRIDGE NEWLANDS CROSS PALMERSTOWN

Glasnevin Trust - 1916 List

Initials (Grave Record)

G

Forename (Grave Record)

GEORGE

Surname (Grave Record)

SYNNOT

Date of Death (Grave Record)

30/04/1916

Affiliation

Civilian



FOUNDED IN 1828

GLASNEVIN TRUST

INCORPORATING: DARDISTOWN GLASNEVIN
GOLDENBRIDGE NEWLANDS CROSS PALMERSTOWN

Glasnevin Trust - 1916 List

Initials (Grave Record)

R

Forename (Grave Record)

ROSANNA

Surname (Grave Record)

TAAFFE

Date of Death (Grave Record)

30/04/1916

Affiliation

Civilian



FOUNDED IN 1828

GLASNEVIN TRUST

INCORPORATING: DARDISTOWN GLASNEVIN
GOLDENBRIDGE NEWLANDS CROSS PALMERSTOWN

Glasnevin Trust - 1916 List

Initials (Grave Record)

D P

Forename (Grave Record)

DAVID PERCIVAL

Surname (Grave Record)

TEMPEST

Date of Death (Grave Record)

29/04/1916

Affiliation

British Army



FOUNDED IN 1828

GLASNEVIN TRUST

INCORPORATING: DARDISTOWN GLASNEVIN
GOLDENBRIDGE NEWLANDS CROSS PALMERSTOWN

Glasnevin Trust - 1916 List

Initials (Grave Record)

JA

Forename (Grave Record)

JOHN A

Surname (Grave Record)

THOMPSON

Date of Death (Grave Record)

24/04/1916

Affiliation

British Army



FOUNDED IN 1828

GLASNEVIN TRUST

INCORPORATING: DARDISTOWN GLASNEVIN
GOLDENBRIDGE NEWLANDS CROSS PALMERSTOWN

Glasnevin Trust - 1916 List

Initials (Grave Record)

M

Forename (Grave Record)

MARY

Surname (Grave Record)

TIMMONS

Date of Death (Grave Record)

29/04/1916

Affiliation

Civilian



FOUNDED IN 1828

GLASNEVIN TRUST

INCORPORATING: DARDISTOWN GLASNEVIN
GOLDENBRIDGE NEWLANDS CROSS PALMERSTOWN

Glasnevin Trust - 1916 List

Initials (Grave Record)

JJ

Forename (Grave Record)

JOHN JOSEPH

Surname (Grave Record)

TRAYNOR

Date of Death (Grave Record)

24/04/1916

Affiliation

Irish Volunteers



FOUNDED IN 1828

GLASNEVIN TRUST

INCORPORATING: DARDISTOWN GLASNEVIN
GOLDENBRIDGE NEWLANDS CROSS PALMERSTOWN

Glasnevin Trust - 1916 List

Initials (Grave Record)

T

Forename (Grave Record)

THOMAS

Surname (Grave Record)

TREACY

Date of Death (Grave Record)

24/04/1916

Affiliation

British Army



FOUNDED IN 1828

GLASNEVIN TRUST

INCORPORATING: DARDISTOWN GLASNEVIN
GOLDENBRIDGE NEWLANDS CROSS PALMERSTOWN

Glasnevin Trust - 1916 List

Initials (Grave Record)

P

Forename (Grave Record)

PATRICK

Surname (Grave Record)

TREVOR

Date of Death (Grave Record)

Affiliation

Civilian



FOUNDED IN 1828

GLASNEVIN TRUST

INCORPORATING: DARDISTOWN GLASNEVIN
GOLDENBRIDGE NEWLANDS CROSS PALMERSTOWN

Glasnevin Trust - 1916 List

Initials (Grave Record)

W A

Forename (Grave Record)

WALTER ASTLE

Surname (Grave Record)

TUNNICLIFFE

Date of Death (Grave Record)

26/04/1916

Affiliation

British Army



FOUNDED IN 1828

GLASNEVIN TRUST

INCORPORATING: DARDISTOWN GLASNEVIN
GOLDENBRIDGE NEWLANDS CROSS PALMERSTOWN

Glasnevin Trust - 1916 List

Initials (Grave Record)

A

Forename (Grave Record)

ALFRED

Surname (Grave Record)

TYLER

Date of Death (Grave Record)

27/04/1916

Affiliation

British Army



FOUNDED IN 1828

GLASNEVIN TRUST

INCORPORATING: DARDISTOWN GLASNEVIN
GOLDENBRIDGE NEWLANDS CROSS PALMERSTOWN

Glasnevin Trust - 1916 List

Initials (Grave Record)

P

Forename (Grave Record)

PRUDENCE

Surname (Grave Record)

VANTREEN

Date of Death (Grave Record)

25/04/1916

Affiliation

Civilian



FOUNDED IN 1828

GLASNEVIN TRUST

INCORPORATING: DARDISTOWN GLASNEVIN
GOLDENBRIDGE NEWLANDS CROSS PALMERSTOWN

Glasnevin Trust - 1916 List

Initials (Grave Record)

E C

Forename (Grave Record)

EDWARD CARDEN

Surname (Grave Record)

VARNALS

Date of Death (Grave Record)

29/04/1916

Affiliation

Civilian



FOUNDED IN 1828

GLASNEVIN TRUST

INCORPORATING: DARDISTOWN GLASNEVIN
GOLDENBRIDGE NEWLANDS CROSS PALMERSTOWN

Glasnevin Trust - 1916 List

Initials (Grave Record)

M M

Forename (Grave Record)

MARGARET MARY

Surname (Grave Record)

VEALE

Date of Death (Grave Record)

30/04/1916

Affiliation

Civilian



FOUNDED IN 1828

GLASNEVIN TRUST

INCORPORATING: DARDISTOWN GLASNEVIN
GOLDENBRIDGE NEWLANDS CROSS PALMERSTOWN

Glasnevin Trust - 1916 List

Initials (Grave Record)

W

Forename (Grave Record)

WILLIAM

Surname (Grave Record)

WALKER

Date of Death (Grave Record)

27/04/1916

Affiliation

British Army



FOUNDED IN 1828

GLASNEVIN TRUST

INCORPORATING: DARDISTOWN GLASNEVIN
GOLDENBRIDGE NEWLANDS CROSS PALMERSTOWN

Glasnevin Trust - 1916 List

Initials (Grave Record)

K

Forename (Grave Record)

KATE

Surname (Grave Record)

WALSH

Date of Death (Grave Record)

Affiliation

Civilian



FOUNDED IN 1828

GLASNEVIN TRUST

INCORPORATING: DARDISTOWN GLASNEVIN
GOLDENBRIDGE NEWLANDS CROSS PALMERSTOWN

Glasnevin Trust - 1916 List

Initials (Grave Record)

P

Forename (Grave Record)

PHILIP

Surname (Grave Record)

WALSH

Date of Death (Grave Record)

Affiliation

Civilian



FOUNDED IN 1828

GLASNEVIN TRUST

INCORPORATING: DARDISTOWN GLASNEVIN
GOLDENBRIDGE NEWLANDS CROSS PALMERSTOWN

Glasnevin Trust - 1916 List

Initials (Grave Record)

E

Forename (Grave Record)

EDWARD

Surname (Grave Record)

WALSH

Date of Death (Grave Record)

25/04/1916

Affiliation

Irish Volunteers



FOUNDED IN 1828

GLASNEVIN TRUST

INCORPORATING: DARDISTOWN GLASNEVIN
GOLDENBRIDGE NEWLANDS CROSS PALMERSTOWN

Glasnevin Trust - 1916 List

Initials (Grave Record)

J

Forename (Grave Record)

JOHN

Surname (Grave Record)

WALSH

Date of Death (Grave Record)

29/04/1916

Affiliation

Civilian



FOUNDED IN 1828

GLASNEVIN TRUST

INCORPORATING: DARDISTOWN GLASNEVIN
GOLDENBRIDGE NEWLANDS CROSS PALMERSTOWN

Glasnevin Trust - 1916 List

Initials (Grave Record)

P

Forename (Grave Record)

PHILIP

Surname (Grave Record)

WALSH

Date of Death (Grave Record)

29/04/1916

Affiliation

Irish Volunteers



FOUNDED IN 1828

GLASNEVIN TRUST

INCORPORATING: DARDISTOWN GLASNEVIN
GOLDENBRIDGE NEWLANDS CROSS PALMERSTOWN

Glasnevin Trust - 1916 List

Initials (Grave Record)

JJ

Forename (Grave Record)

JAMES JOSEPH

Surname (Grave Record)

WALSH

Date of Death (Grave Record)

11/05/1916

Affiliation

Civilian



FOUNDED IN 1828

GLASNEVIN TRUST

INCORPORATING: DARDISTOWN GLASNEVIN
GOLDENBRIDGE NEWLANDS CROSS PALMERSTOWN

Glasnevin Trust - 1916 List

Initials (Grave Record)

A J

Forename (Grave Record)

AUSTIN JOSEPH

Surname (Grave Record)

WALTON

Date of Death (Grave Record)

27/04/1916

Affiliation

British Army



FOUNDED IN 1828

GLASNEVIN TRUST

INCORPORATING: DARDISTOWN GLASNEVIN
GOLDENBRIDGE NEWLANDS CROSS PALMERSTOWN

Glasnevin Trust - 1916 List

Initials (Grave Record)

E

Forename (Grave Record)

ELEANOR

Surname (Grave Record)

WARBROOK

Date of Death (Grave Record)

24/04/1916

Affiliation

Civilian



FOUNDED IN 1828

GLASNEVIN TRUST

INCORPORATING: DARDISTOWN GLASNEVIN
GOLDENBRIDGE NEWLANDS CROSS PALMERSTOWN

Glasnevin Trust - 1916 List

Initials (Grave Record)

A E

Forename (Grave Record)

ALFRED ERNEST

Surname (Grave Record)

WARMINGTON

Date of Death (Grave Record)

24/04/1916

Affiliation

British Army



FOUNDED IN 1828

GLASNEVIN TRUST

INCORPORATING: DARDISTOWN GLASNEVIN
GOLDENBRIDGE NEWLANDS CROSS PALMERSTOWN

Glasnevin Trust - 1916 List

Initials (Grave Record)

A

Forename (Grave Record)

ARTHUR

Surname (Grave Record)

WARNER

Date of Death (Grave Record)

27/04/1916

Affiliation

British Army



FOUNDED IN 1828

GLASNEVIN TRUST

INCORPORATING: DARDISTOWN GLASNEVIN
GOLDENBRIDGE NEWLANDS CROSS PALMERSTOWN

Glasnevin Trust - 1916 List

Initials (Grave Record)

A

Forename (Grave Record)

ABRAHAM

Surname (Grave Record)

WATCHORN

Date of Death (Grave Record)

26/04/1916

Affiliation

British Army



FOUNDED IN 1828

GLASNEVIN TRUST

INCORPORATING: DARDISTOWN GLASNEVIN
GOLDENBRIDGE NEWLANDS CROSS PALMERSTOWN

Glasnevin Trust - 1916 List

Initials (Grave Record)

R

Forename (Grave Record)

RICHARD

Surname (Grave Record)

WATERS

Date of Death (Grave Record)

25/04/1916

Affiliation

Civilian



FOUNDED IN 1828

GLASNEVIN TRUST

INCORPORATING: DARDISTOWN GLASNEVIN
GOLDENBRIDGE NEWLANDS CROSS PALMERSTOWN

Glasnevin Trust - 1916 List

Initials (Grave Record)

W

Forename (Grave Record)

WILLIAM

Surname (Grave Record)

WATSON

Date of Death (Grave Record)

26/04/1916

Affiliation

Civilian



FOUNDED IN 1828

GLASNEVIN TRUST

INCORPORATING: DARDISTOWN GLASNEVIN
GOLDENBRIDGE NEWLANDS CROSS PALMERSTOWN

Glasnevin Trust - 1916 List

Initials (Grave Record)

F J

Forename (Grave Record)

FELIX JOSEPH

Surname (Grave Record)

WATTRES

Date of Death (Grave Record)

08/05/1916

Affiliation

Civilian



FOUNDED IN 1828

GLASNEVIN TRUST

INCORPORATING: DARDISTOWN GLASNEVIN
GOLDENBRIDGE NEWLANDS CROSS PALMERSTOWN

Glasnevin Trust - 1916 List

Initials (Grave Record)

T J

Forename (Grave Record)

THOMAS JOSEPH

Surname (Grave Record)

WEAFER

Date of Death (Grave Record)

26/04/1916

Affiliation

Irish Volunteers



FOUNDED IN 1828

GLASNEVIN TRUST

INCORPORATING: DARDISTOWN GLASNEVIN
GOLDENBRIDGE NEWLANDS CROSS PALMERSTOWN

Glasnevin Trust - 1916 List

Initials (Grave Record)

W

Forename (Grave Record)

WILLIAM

Surname (Grave Record)

WEST

Date of Death (Grave Record)

28/04/1916

Affiliation

Civilian



FOUNDED IN 1828

GLASNEVIN TRUST

INCORPORATING: DARDISTOWN GLASNEVIN
GOLDENBRIDGE NEWLANDS CROSS PALMERSTOWN

Glasnevin Trust - 1916 List

Initials (Grave Record)

P

Forename (Grave Record)

PATRICK

Surname (Grave Record)

WHELAN

Date of Death (Grave Record)

26/04/1916

Affiliation

Irish Volunteers



FOUNDED IN 1828

GLASNEVIN TRUST

INCORPORATING: DARDISTOWN GLASNEVIN
GOLDENBRIDGE NEWLANDS CROSS PALMERSTOWN

Glasnevin Trust - 1916 List

Initials (Grave Record)

P

Forename (Grave Record)

PATRICK

Surname (Grave Record)

WHELAN

Date of Death (Grave Record)

26/04/1916

Affiliation

Royal Irish Constabulary



FOUNDED IN 1828

GLASNEVIN TRUST

INCORPORATING: DARDISTOWN GLASNEVIN
GOLDENBRIDGE NEWLANDS CROSS PALMERSTOWN

Glasnevin Trust - 1916 List

Initials (Grave Record)

C

Forename (Grave Record)

CHRISTOPHER

Surname (Grave Record)

WHELAN

Date of Death (Grave Record)

28/04/1916

Affiliation

Civilian



FOUNDED IN 1828

GLASNEVIN TRUST

INCORPORATING: DARDISTOWN GLASNEVIN
GOLDENBRIDGE NEWLANDS CROSS PALMERSTOWN

Glasnevin Trust - 1916 List

Initials (Grave Record)

D

Forename (Grave Record)

DANIEL

Surname (Grave Record)

WHELAN

Date of Death (Grave Record)

29/04/1916

Affiliation

Civilian



FOUNDED IN 1828

GLASNEVIN TRUST

INCORPORATING: DARDISTOWN GLASNEVIN
GOLDENBRIDGE NEWLANDS CROSS PALMERSTOWN

Glasnevin Trust - 1916 List

Initials (Grave Record)

S

Forename (Grave Record)

SARAH

Surname (Grave Record)

WHELAN

Date of Death (Grave Record)

01/05/1916

Affiliation

Civilian



FOUNDED IN 1828

GLASNEVIN TRUST

INCORPORATING: DARDISTOWN GLASNEVIN
GOLDENBRIDGE NEWLANDS CROSS PALMERSTOWN

Glasnevin Trust - 1916 List

Initials (Grave Record)

J

Forename (Grave Record)

JOHN

Surname (Grave Record)

WHELAN

Date of Death (Grave Record)

21/05/1916

Affiliation

British Army



FOUNDED IN 1828

GLASNEVIN TRUST

INCORPORATING: DARDISTOWN GLASNEVIN
GOLDENBRIDGE NEWLANDS CROSS PALMERSTOWN

Glasnevin Trust - 1916 List

Initials (Grave Record)

M

Forename (Grave Record)

MYLES

Surname (Grave Record)

WHITE

Date of Death (Grave Record)

Affiliation

Civilian



FOUNDED IN 1828

GLASNEVIN TRUST

INCORPORATING: DARDISTOWN GLASNEVIN
GOLDENBRIDGE NEWLANDS CROSS PALMERSTOWN

Glasnevin Trust - 1916 List

Initials (Grave Record)

E

Forename (Grave Record)

ELIZABETH

Surname (Grave Record)

WILKINSON

Date of Death (Grave Record)

02/05/1916

Affiliation

Civilian



FOUNDED IN 1828

GLASNEVIN TRUST

INCORPORATING: DARDISTOWN GLASNEVIN
GOLDENBRIDGE NEWLANDS CROSS PALMERSTOWN

Glasnevin Trust - 1916 List

Initials (Grave Record)

D

Forename (Grave Record)

DAVID

Surname (Grave Record)

WILSON

Date of Death (Grave Record)

24/04/1916

Affiliation

British Army



FOUNDED IN 1828

GLASNEVIN TRUST

INCORPORATING: DARDISTOWN GLASNEVIN
GOLDENBRIDGE NEWLANDS CROSS PALMERSTOWN

Glasnevin Trust - 1916 List

Initials (Grave Record)

P

Forename (Grave Record)

PETER

Surname (Grave Record)

WILSON

Date of Death (Grave Record)

29/04/1916

Affiliation

Irish Volunteers



FOUNDED IN 1828

GLASNEVIN TRUST

INCORPORATING: DARDISTOWN GLASNEVIN
GOLDENBRIDGE NEWLANDS CROSS PALMERSTOWN

Glasnevin Trust - 1916 List

Initials (Grave Record)

A E

Forename (Grave Record)

ALBERT EDWARD

Surname (Grave Record)

WOOD

Date of Death (Grave Record)

17/05/1916

Affiliation

British Army



FOUNDED IN 1828

GLASNEVIN TRUST

INCORPORATING: DARDISTOWN GLASNEVIN
GOLDENBRIDGE NEWLANDS CROSS PALMERSTOWN

Glasnevin Trust - 1916 List

Initials (Grave Record)

R

Forename (Grave Record)

RICHARD

Surname (Grave Record)

WOODCOCK

Date of Death (Grave Record)

Affiliation

Civilian



FOUNDED IN 1828

GLASNEVIN TRUST

INCORPORATING: DARDISTOWN GLASNEVIN
GOLDENBRIDGE NEWLANDS CROSS PALMERSTOWN

Glasnevin Trust - 1916 List

Initials (Grave Record)

B H

Forename (Grave Record)

BASIL HENRY

Surname (Grave Record)

WORSLEY-WORSWICK

Date of Death (Grave Record)

29/04/1916

Affiliation

British Army



FOUNDED IN 1828

GLASNEVIN TRUST

INCORPORATING: DARDISTOWN GLASNEVIN
GOLDENBRIDGE NEWLANDS CROSS PALMERSTOWN

Glasnevin Trust - 1916 List

Initials (Grave Record)

WT P

Forename (Grave Record)

WILLIAM THOMAS PERCY

Surname (Grave Record)

WRIGHT

Date of Death (Grave Record)

28/04/1916

Affiliation

British Army



FOUNDED IN 1828

GLASNEVIN TRUST

INCORPORATING: DARDISTOWN GLASNEVIN
GOLDENBRIDGE NEWLANDS CROSS PALMERSTOWN

Glasnevin Trust - 1916 List

Initials (Grave Record)

G

Forename (Grave Record)

GEORGE

Surname (Grave Record)

WYLD

Date of Death (Grave Record)

26/04/1916

Affiliation

British Army



FOUNDED IN 1828

GLASNEVIN TRUST

INCORPORATING: DARDISTOWN GLASNEVIN
GOLDENBRIDGE NEWLANDS CROSS PALMERSTOWN

Glasnevin Trust - 1916 List

Initials (Grave Record)

S L

Forename (Grave Record)

SIDNEY LEONARD

Surname (Grave Record)

YOUNG

Date of Death (Grave Record)

25/04/1916

Affiliation

British Army



FOUNDED IN 1828

GLASNEVIN TRUST

INCORPORATING: DARDISTOWN GLASNEVIN
GOLDENBRIDGE NEWLANDS CROSS PALMERSTOWN

Glasnevin Trust - 1916 List

Initials (Grave Record)

J

Forename (Grave Record)

JOHN

Surname (Grave Record)

YOUNG

Date of Death (Grave Record)

28/04/1916

Affiliation

Royal Irish Constabulary



FOUNDED IN 1828

GLASNEVIN TRUST

INCORPORATING: DARDISTOWN GLASNEVIN
GOLDENBRIDGE NEWLANDS CROSS PALMERSTOWN





FOUNDED IN 1828

GLASNEVIN TRUST

INCORPORATING:
GOLDENBRIDGE

DARDISTOWN
NEWLANDS CROSS

GLASNEVIN
PALMERSTOWN