

# “Wei Li”

## DP II 3,000T Self-propelled Floating Crane



### 1. 3000T full revolving crane

| Crane                                                    | Main hoist                                                                                                                                               | Auxiliary hoist                                | Whip hoist          |
|----------------------------------------------------------|----------------------------------------------------------------------------------------------------------------------------------------------------------|------------------------------------------------|---------------------|
| Type of hook                                             | Single hook                                                                                                                                              | Double hooks                                   | Single hook         |
| Load                                                     | 3,000T--900T<br>at fixed condition<br>at jib aft<br>2,600T--360T<br>at full revolving condition                                                          | 700T--165T<br>at fixed or at full<br>revolving | 50T                 |
| Working radius                                           | 3,000T<br>19.5m-40m(fixed)<br>900T<br>19.5m-73.2m(fixed)<br>2,600T<br>19.5m (revolving)<br>2,100T<br>27.4m (revolving)<br>360T<br>19.5m-73.2m(revolving) | 700T<br>22.3m-40m<br>165T<br>22.3m-85.3m       | 50T<br>25m-88.4m    |
| Lifting Height                                           | 83m@R19.5                                                                                                                                                | 97m@minimum radius                             | 106m@minimum radius |
| Reach below deck<br>(including distance under main deck) | 11m @R40m                                                                                                                                                | 158m@R40m                                      | 8m@R40m             |
| (Lifting speed)                                          | 2.4m/min 3000T<br>5.2m/min 1,000T<br>5.8m/min No Load                                                                                                    | 11.7m/min<br>19m/min                           | 59m/min<br>63m/min  |

### 2. Class of Ship

CCS, Floating Crane, Salvage Ship, Ice Class B, DP-2, Accommodation, Helicopter deck

3. Principal Particulars

|                  |                                                              |
|------------------|--------------------------------------------------------------|
| Length           | 141.00m                                                      |
| Breadth          | 40.00m                                                       |
| Depth            | 12.80m                                                       |
| Draught          | 8.5m                                                         |
| Navigation draft | 5.6m                                                         |
| Displacement     | 41,300T (Lifting Draught)<br>26,000T (At Navigation Draught) |
| Complement       | 240 persons                                                  |
| jib fixed aft    | 3,000T X 40M                                                 |

4 DP Capacity

Wind Speed Level 6, Current 3 Knots, DP2  
More Details see attached drawings

5. Machinery of deck

|                                    |                                                  |
|------------------------------------|--------------------------------------------------|
| 1) Positioning Winch               | 8 sets                                           |
| Brake load                         | 2,600kN (2 <sup>nd</sup> layer)                  |
| Wire Diameter                      | φ66 mm                                           |
| Storage Capacity                   | 2,000 m                                          |
| Mooring Depth                      | 200 m                                            |
| Heavy Line                         | 800kN(Mid-Layer)0-15 m/min                       |
| Light Line                         | 4                      00kN(Mid-Layer)0-45 m/min |
| 2) Windlass                        | 2 sets                                           |
| Weight of anchor                   | 7.8T                                             |
| Capacity                           | 20T X 9m/min dia.=78mm                           |
| 3) Positioning Winch               | 8 sets                                           |
| Weight of Positioning winch anchor | 8T each                                          |
| Capacity                           | 80T/Light Load X 15/45m/min                      |
| Line length                        | 2,000m                                           |
| 4) Small crane                     | one set at port with four portable locations     |
| Capacity                           | 20T@10m-10T@25m                                  |
| 5) Free deck Area                  | >2,500M <sup>2</sup> (See GA)                    |

6. Generator

|                       |                                    |
|-----------------------|------------------------------------|
| Total Generator Power | 22,620KW                           |
| Main generator        | AC 4,320KW X 6,600V X 50HZ/4 sets  |
| Diesel engine         | 4,500KW X 750R.P.M./4 sets         |
| Aux. generator        | AC 2,195KW X 6,600V X 50HZ /2 sets |
| Diesel engine         | 2,310KW X 750R.P.M/ 2 sets         |

7. Propelling machinery

|                       |                  |
|-----------------------|------------------|
| Total Thrust Power    | 15,000KW         |
| Azimuth Propeller     | 4,500kW X 2 sets |
| Retractable Propeller | 2,000kW X 2 sets |
| Tunnel Propeller      | 2,000kW X 1sets  |

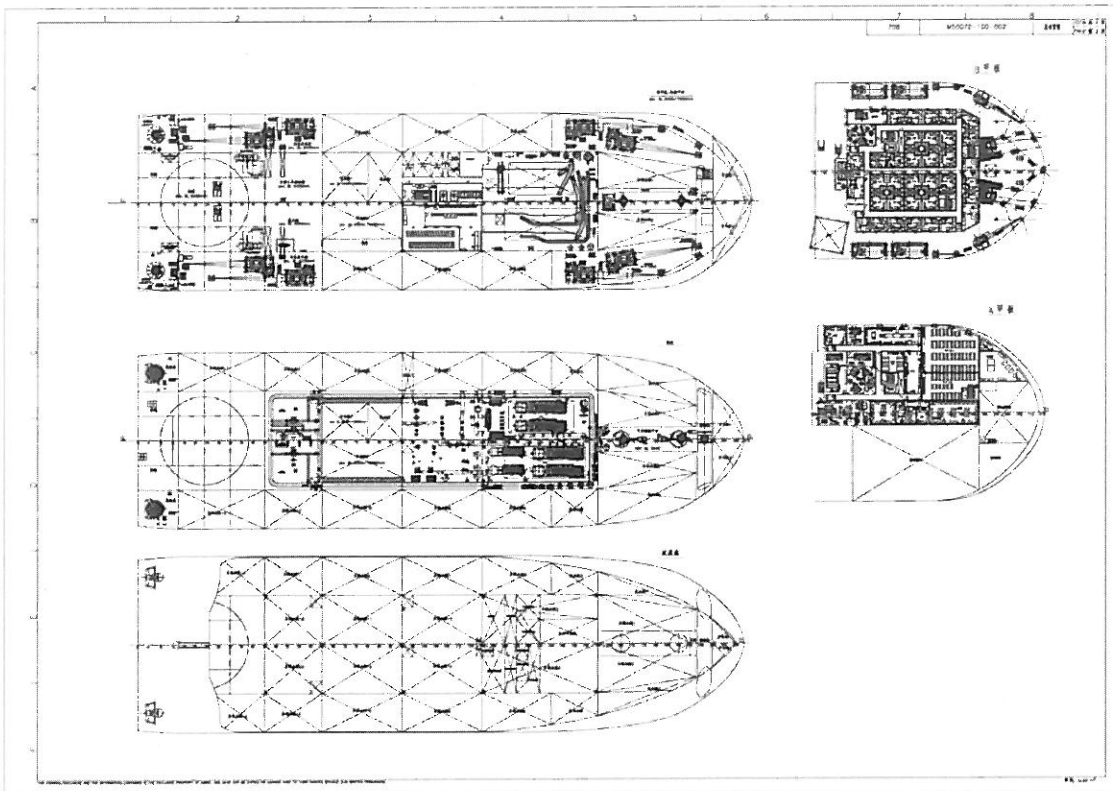
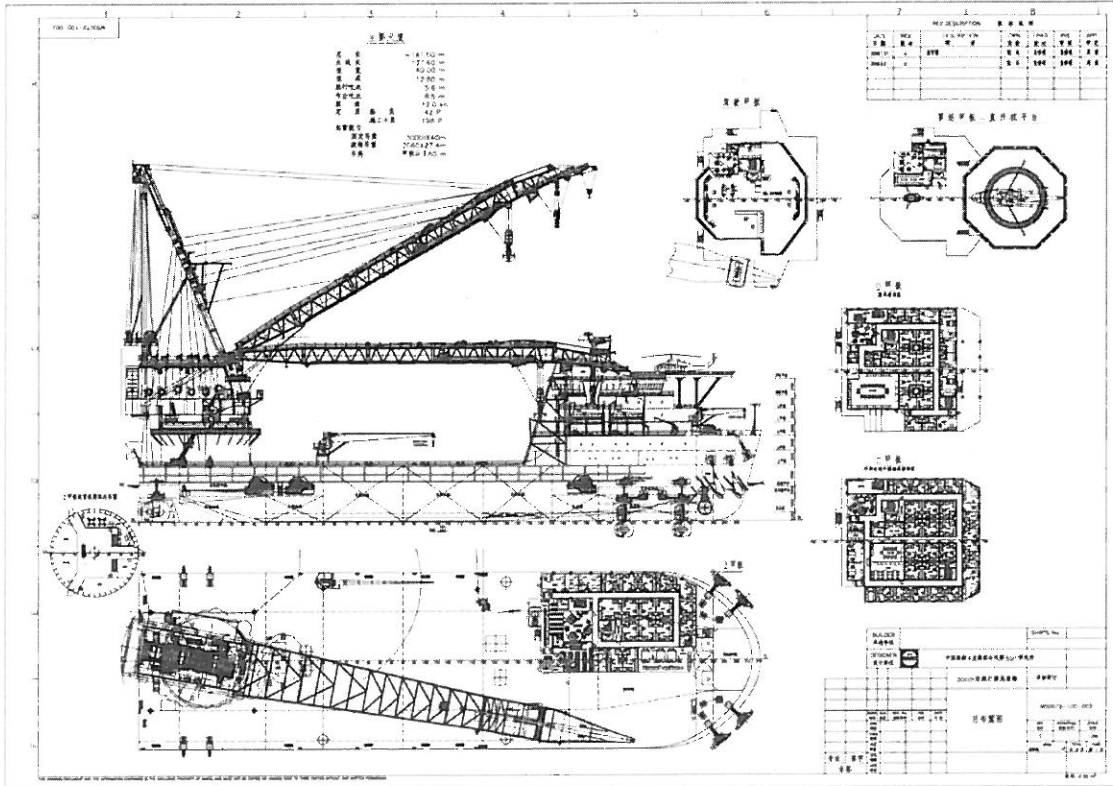
Rated Speed

about 12 KTS

8. Ship Control System

Kongsberg Kpos DP2, K-Thrust, K-Winch, K-Chief 700, K-Bridge, K-Line Hardware and Software has been integrated into this ship.

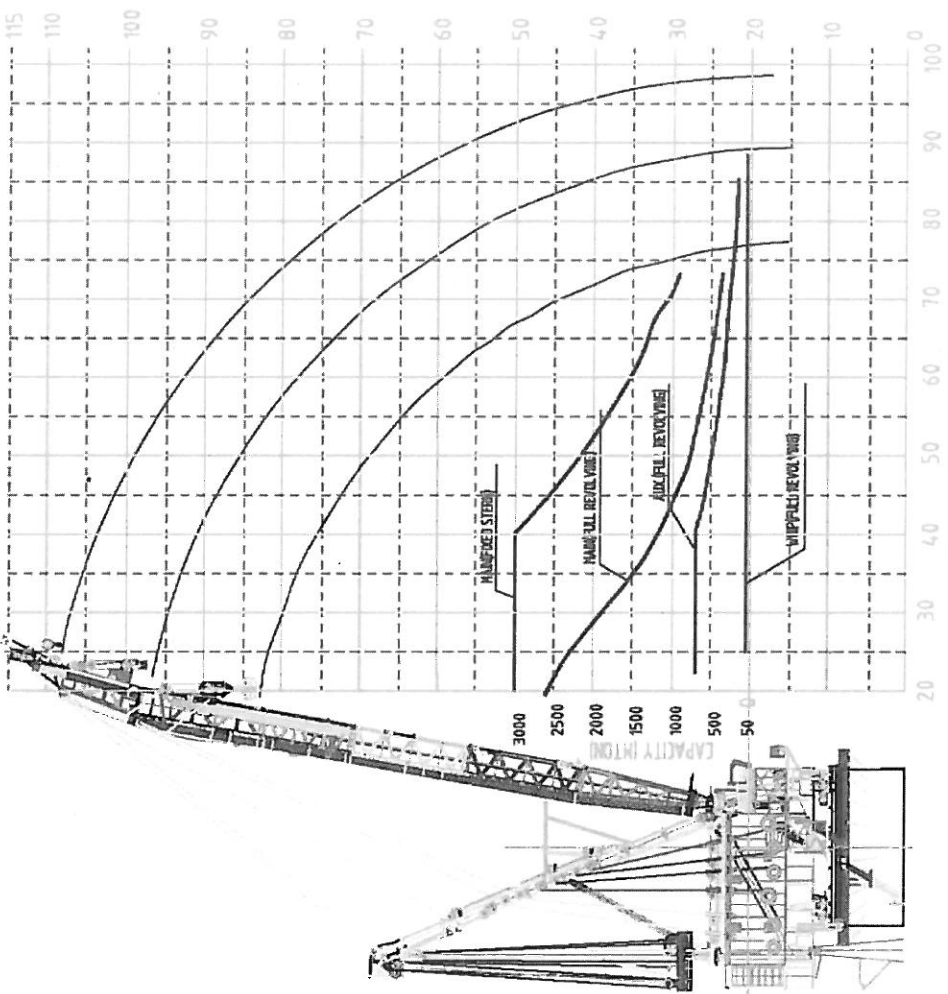
9. Space preserved for pipe-laying system.



GENERAL

DETAIL

| Reach (m) | Height (m) | Capacity (t) | Wind Speed (m/s) | Wind Angle (deg) |
|-----------|------------|--------------|------------------|------------------|
| 20        | 115        | 3000         | 18.5             | 8.5°             |
| 30        | 110        | 2500         | 18.5             | 8.5°             |
| 40        | 100        | 2000         | 18.5             | 8.5°             |
| 50        | 90         | 1500         | 18.5             | 8.5°             |
| 60        | 80         | 1000         | 18.5             | 8.5°             |
| 70        | 70         | 500          | 18.5             | 8.5°             |
| 80        | 60         | 250          | 18.5             | 8.5°             |
| 90        | 50         | 100          | 18.5             | 8.5°             |
| 100       | 40         | 50           | 18.5             | 8.5°             |
| 110       | 30         | 25           | 18.5             | 8.5°             |
| 115       | 20         | 10           | 18.5             | 8.5°             |



Lifting Capacity Curve

Particulars believed to be correct but not guaranteed. Revision 2010.4.7

