

Suliasi Batikawai, Fiji Ministry of Health and
Medical Services

Waqairapoa Tikoisuva, UNICEF Pacific

WASH in Health Care Facilities: Fiji Experience

Pathways to universal
and sustained
water, sanitation
and hygiene

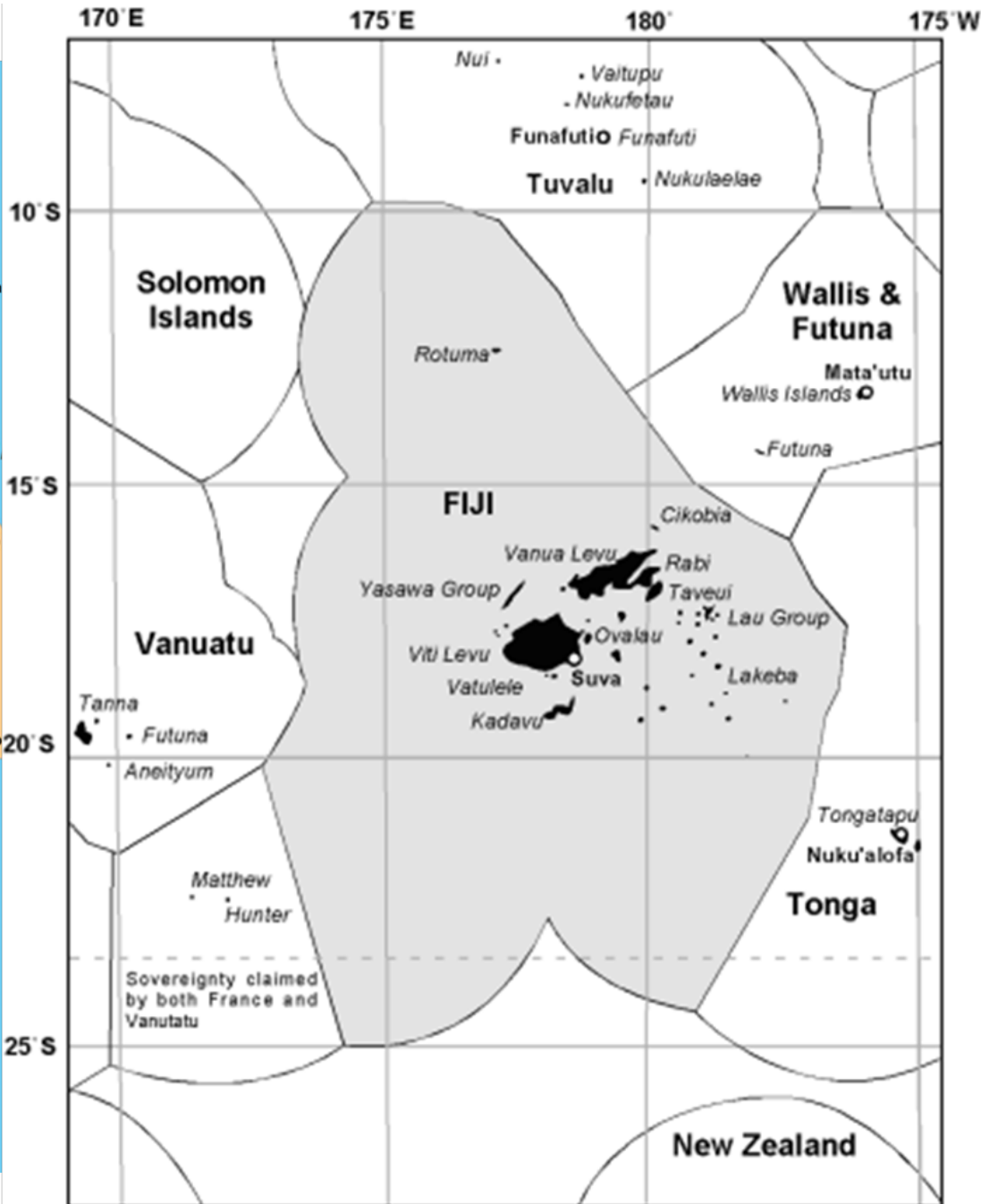


Outline

- Fiji
- Existing Mechanisms
- TC Winston
- Damages
- Responses
- WASH in HCF Survey
- Way forward



MoHMS (2015)

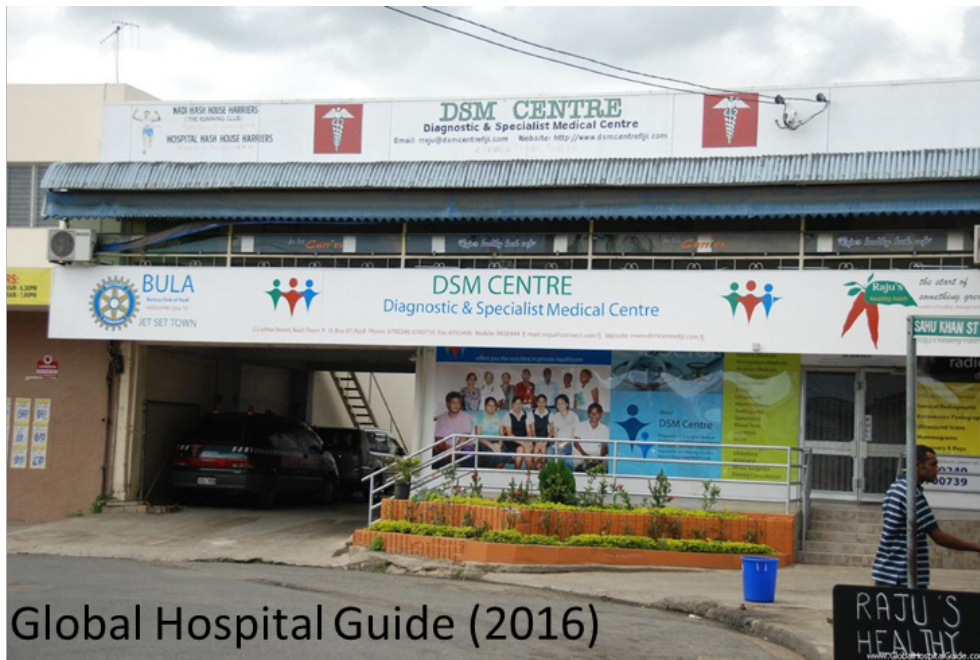


Fiji Fishery Management (2015)



Cont'd...

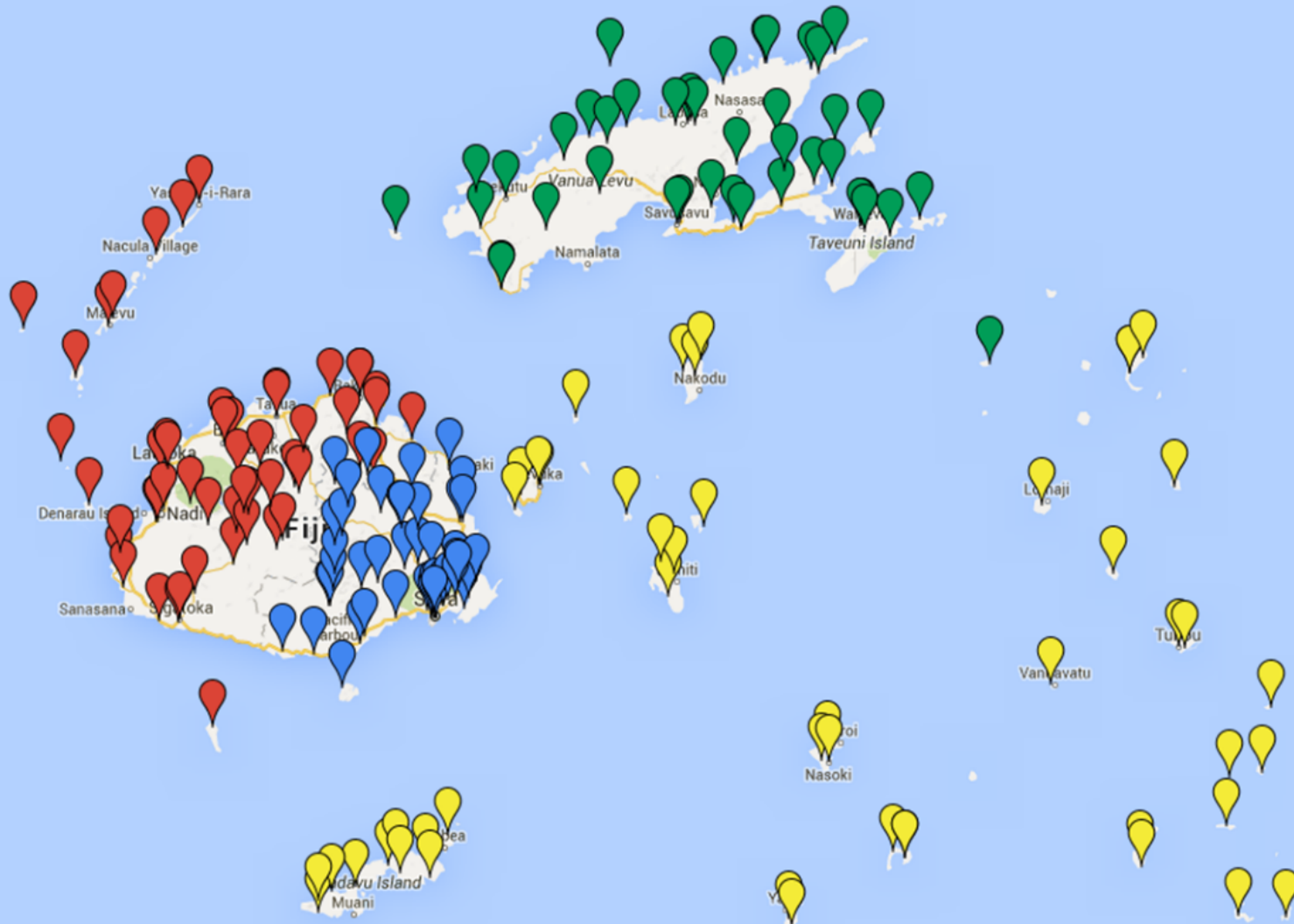
- App. 837,000 population (2007)
- 333 Islands of which 110 permanently inhabited
- Language: English, Fijian and Fiji Hindi



Global Hospital Guide (2016)



Geoview (2008)



Existing Mechanisms

Governance –

Fiji Constitution Section 36 – Right to adequate food and water

Fiji Constitution Section 38 – Right to Health

Corporate Structure, National Strategic Plans (2016 – 2020), Annual Corporate Plans, Divisional Business Plan

Policy – Infection Control Policy, Health Care Waste policy, Infection Control Guideline

Budget

- Supplies - budget allocation given to each division and hospitals
- Infrastructure - no specific budget but considered when improvement is needed.

Monitoring – Infection Control Unit, Environmental Health, Asset Management Unit

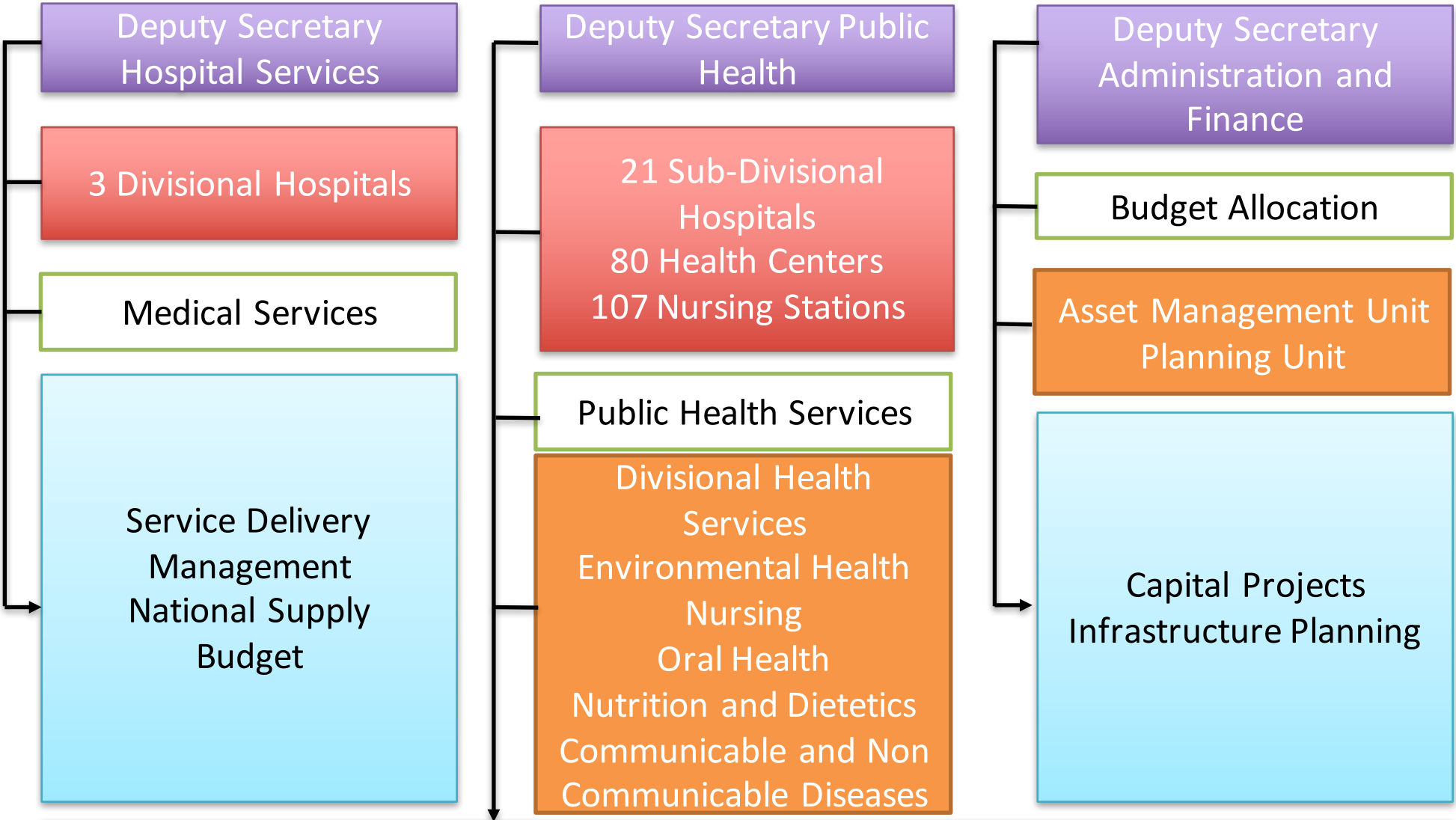
Standards –

- Water Quality - National Drinking Water Quality Standard
- Infrastructure – Public Health building regulation and National Building Code

Safe Smart Hospital



Minister of Health and Medical Services



Service Delivery – Management - Community Engagement
Supply – Budget – Infection Control and Prevention - Drinking Water Quality - Hygiene
Infrastructure Compliance – Health Care Waste Management – Food Safety - Sanitation



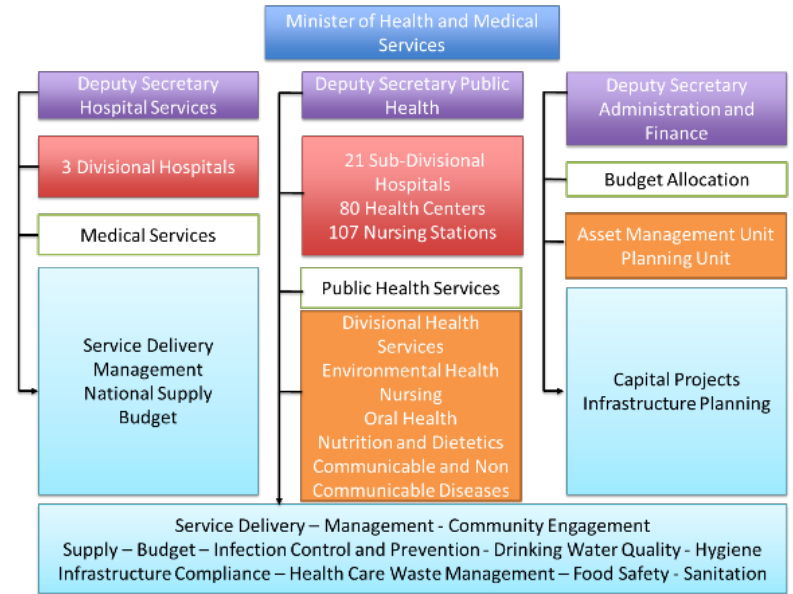
Public Health

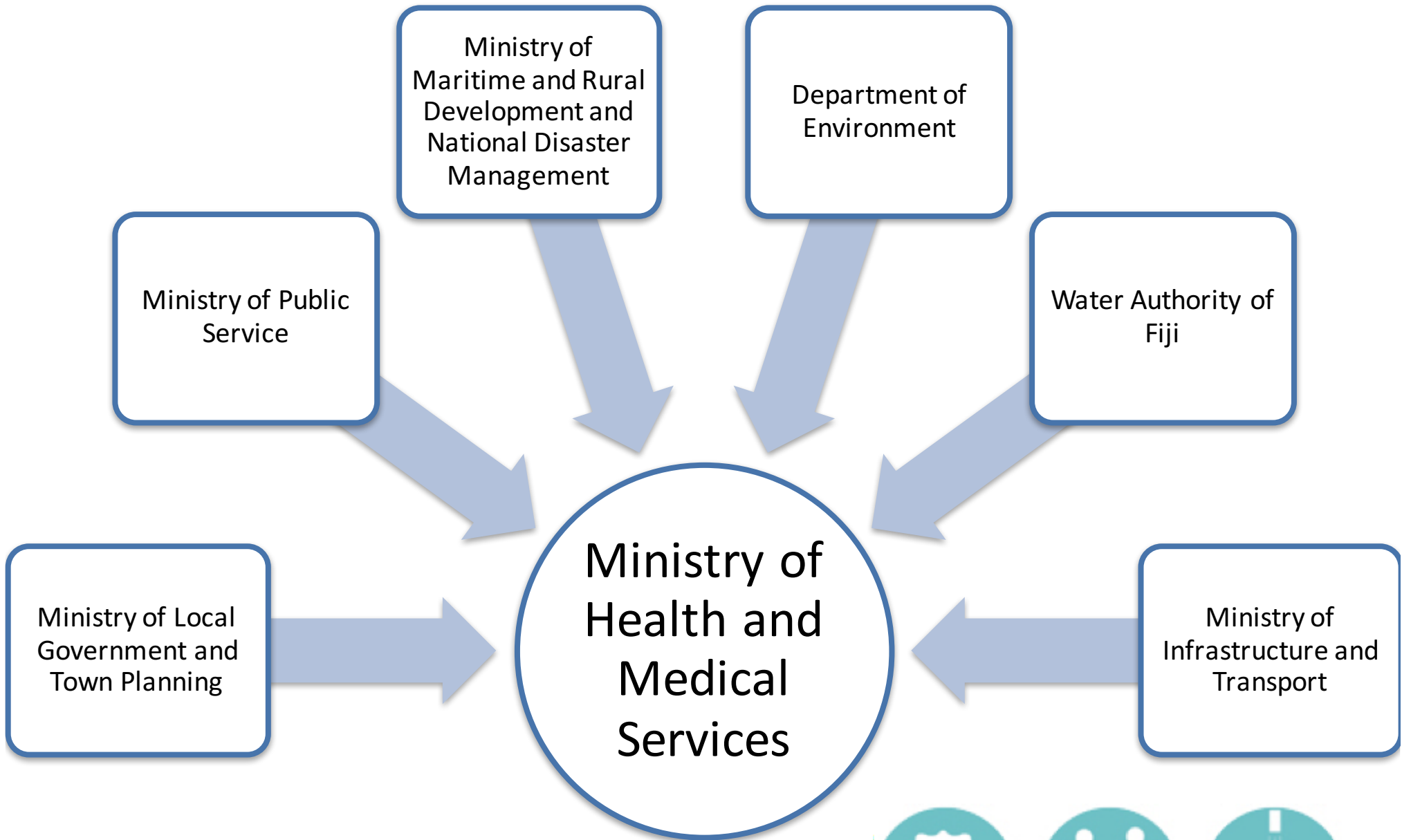


Hospital Services



Administration and Finance

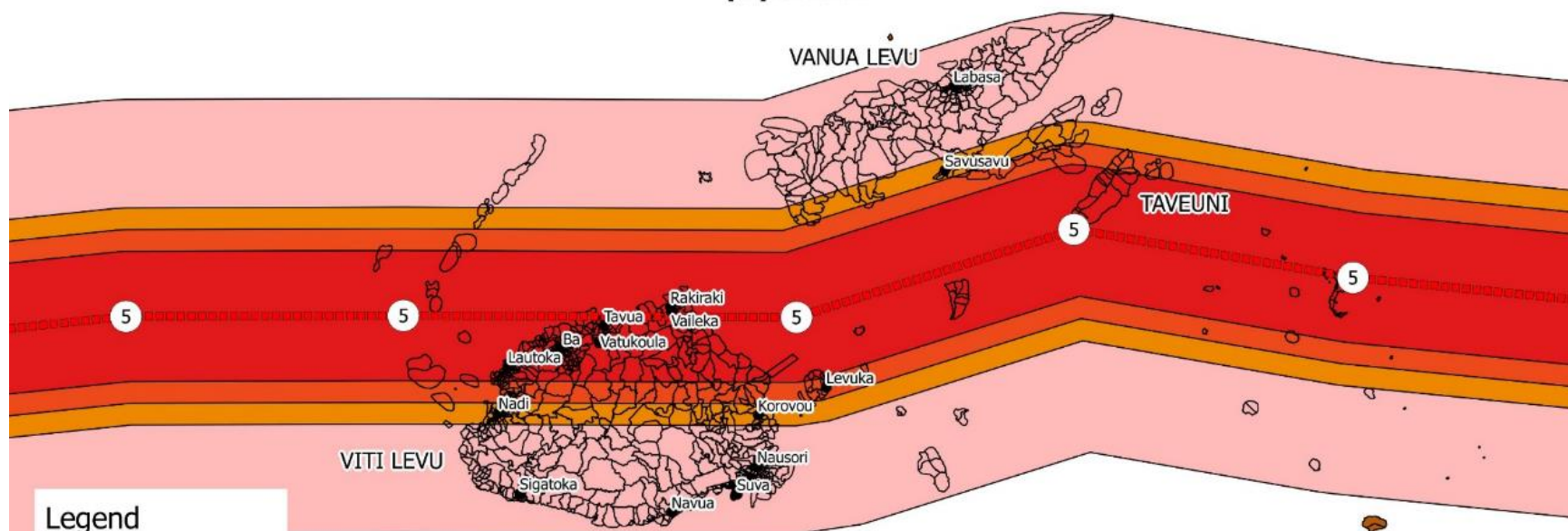




TC Winston

CYCLONE WINSTON POTENTIAL IMPACTED POPULATION - 23/02/16

NOTE : Population figures projected to 2015 using age distribution from 2007 Population and Housing Census then prorated down to match total projected population



Legend

- Intensity
- Cyclone track
- 30km buffer zone
- 40km buffer zone
- 50km buffer zone
- 100km buffer zone
- Fiji EAs



Pacific Community
Communauté du Pacifique

0 50 100 km



| | 30km | 40km | 50km | 100km |
|---------------|--------|--------|--------|--------|
| Total | 208070 | 258732 | 347728 | 844008 |
| Male | 106875 | 133405 | 178886 | 429656 |
| Female | 101195 | 125327 | 168842 | 414353 |

NOTE: EAs which were split by a buffer zone have their populations apportioned to each buffer

Map produced by Phil Bright (phillb@spc.int), Statistics for Development Division, SPC, 23-02-16

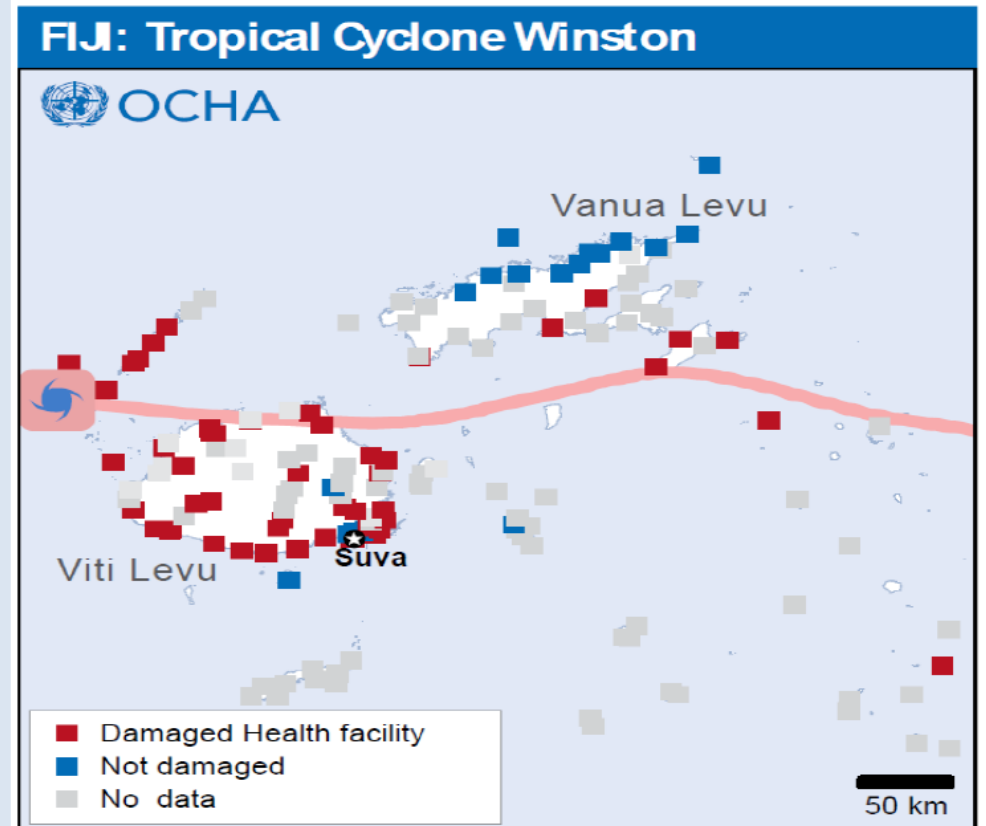


Damages

- 88 facilities damaged (41%) out of 214
- 7 require rehabilitation
- 9 require reconstruction
- 10 require relocation



MAP OF HEALTH FACILITIES DAMAGED BY TC WINSTON



Map Sources: Fiji Ministry of Lands, Fiji Ministry of Health, Map Action
The boundaries and names shown and the designations used on this map do not imply official endorsement or acceptance by the United Nations. Map created on 3 March, 2016 -



| Type of facility | Total | |
|------------------|----------|---|
| | Central | W |
| Hospital | 8 | |
| Health Center | 20 | 2 |
| Nursing Station | 22 | 2 |
| Old people home | | |
| Total | Hospital | 0 |
| | Health | 0 |

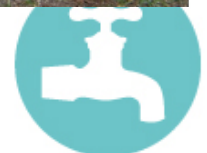


MoHMS (2016)



MoHMS (2016)

| | | |
|---|---|-------|
| 0 | 0 | Total |
| 0 | 7 | 3 |
| | 3 | 35 |
| | 3 | 34 |
| | 0 | 1 |
| | 9 | 88 |



Responses

- Agreements signed with local NGOs for mobile Health services and sanitation services.
- Emergency Supplies
- Donation worth \$1million FJD received and distributed to 65 facilities.
- Medical Supplies restocked
- Post Disaster Needs Assessment
- Health Emergency Resource Availability Mapping Survey (HeRAMS) and WASH in Health Care Facilities being planned.



WASH in HCF Survey & HeRAMS



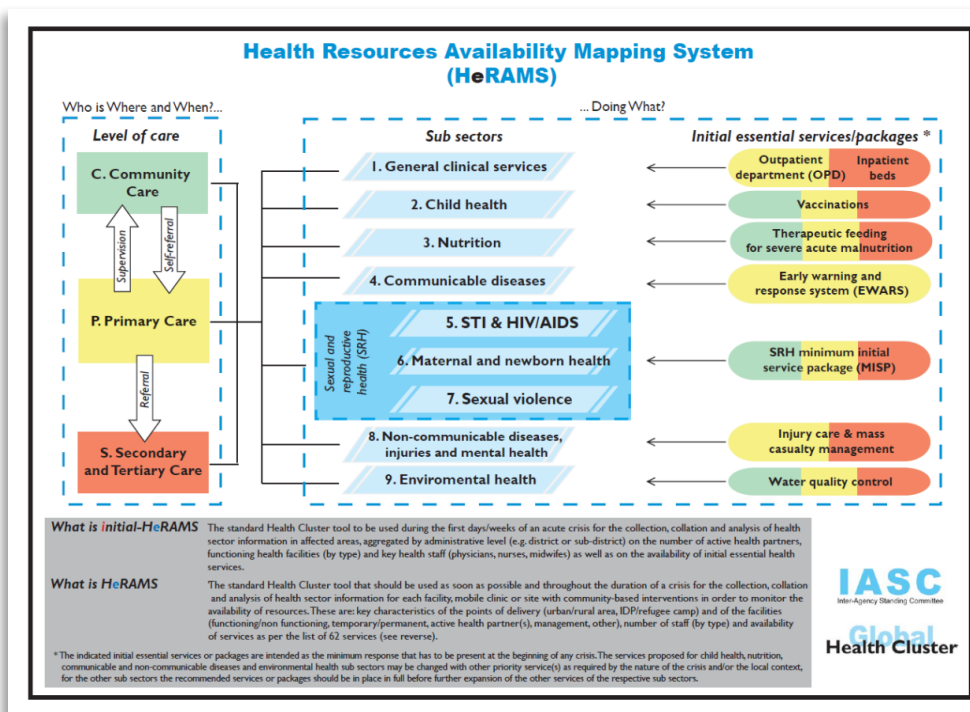
UNC
WATER INSTITUTE

akvo.org
See it happen

WASH IN HEALTH CARE FACILITIES

FOR BETTER HEALTH CARE SERVICES

World Health Organization
unicef



Health Emergency Resource Availability Mapping System (HeRAMS)

- Following an emergency/disaster
- Availability of health resources in different areas and location and type of health services at different levels of health care facilities
 - General clinical services & essential trauma
 - Child health
 - Communicable diseases
 - Sexual & reproductive health
 - Non communicable diseases
 - Environmental Health



Cont'd...

- Scoping
 - Policies/Acts & Legislations
 - Budget Allocation
 - Departmental Roles and Responsibilities
 - Communications
 - Programmes
 - Stakeholders
- Bottleneck Analysis
 - Enabling Environment
 - Supply
 - Demand
 - Quality

Emergency Preparedness

The collage displays four pages from a manual titled 'WASH in Health Care Facilities'. The pages include:

- Page 1 (Top Left):** 'WASH in Health Care Facilities - Core Indicators'. It lists standard indicators for ODFPAZART across all health care facilities, detailing the purpose and measurement of each indicator.
- Page 2 (Top Right):** 'Questions' section, containing a table of questions (Q1-Q3) related to water availability and safety, with corresponding response options (Yes/No) and notes.
- Page 3 (Bottom Left):** 'WASH in Health Care Facilities' overview page, including an expanded list of ODFPAZART areas and a 'WATER' section with global norms and indicators.
- Page 4 (Bottom Right):** 'SANITATION' section, detailing global norms, indicators, and a list of questions (Q1-Q5) regarding toilet facilities and hand hygiene.



Cont'd...

- Health care facility information
- Sanitation (liquid waste)
- Solid waste storage and disposal
- Hygiene
- Management
- Infrastructure
- Emergency preparedness

| WASH and HERAMS (v. 1.0) | | |
|--|--|----------|
| Question | | Response |
| Assessor information | | |
| 1. Name of Assessor? | | |
| 2. Phone contact of assessor? | | |
| 3. Email contact of assessor? | | |
| Health facility Information | | |
| 4. Name of health facility? | | |
| 5. Health Facility code? | | |
| 6. Type of Hospital? | | |
| Health facility Contact Information | | |
| 7. Name of Health Facility Contact Person? | | |
| 8. Position of Contact Person? | | |
| 9. Who is the Managing Authority for this Health facility? | | |
| 10. Telephone Contact? | | |
| 11. Email Contact? | | |
| 12. Health Facility Geo-location? | | |

| WASH and HERAMS (v. 1.0) | | |
|--|--|----------|
| Question | | Response |
| Assessor information | | |
| 1. Name of Assessor? | | |
| 2. Phone contact of assessor? | | |
| 3. Email contact of assessor? | | |
| Health facility Information | | |
| 4. Name of health facility? | | |
| 5. Health Facility code? | | |
| 6. Type of Health Center? | | |
| Health facility Contact Information | | |
| 7. Name of Health Facility Contact Person? | | |
| 8. Position of Contact Person? | | |
| 9. Who is the Managing Authority for this Health facility? | | |
| 10. Telephone Contact? | | |
| 11. Email Contact? | | |
| 12. Health Facility Geo-location? | | |

| WASH and HERAMS (v. 1.0) | | |
|--|--|----------|
| Question | | Response |
| Assessor information | | |
| 1. Name of Assessor? | | |
| 2. Phone contact of assessor? | | |
| 3. Email contact of assessor? | | |
| Health facility Information | | |
| 4. Name of health facility? | | |
| 5. Health Facility code? | | |
| 6. Type of Nursing Station? | | |
| Health facility Contact Information | | |
| 7. Name of Health Facility Contact Person? | | |
| 8. Position of Contact Person? | | |
| 9. Who is the Managing Authority for this Health facility? | | |
| 10. Telephone Contact? | | |
| 11. Email Contact? | | |
| 12. Health Facility Geo-location? | | |



Implementation

| Activities | Timeframe | Tentative dates | Status |
|----------------------|-------------|-------------------|-----------|
| Proposal Formulation | 3 months | | Completed |
| Survey Formulation | 3 months | | Completed |
| Scoping | 4 months | | Ongoing |
| Pre-test | 1 week | | Completed |
| Survey | 4 -5 months | May – August | Planned |
| Analysis | 4 months | August – November | Planned |
| Dissemination | 1 month | December | Planned |



Way Forward

- Enabling environment / Prioritization
- Integrate/strengthen existing systems (champions)
- Training
- Learning institutions
- Advocacy
- Water safety planning in health facilities
- Incorporate disaster preparedness and resilience
- Inform Build Back Better initiative





Vinaka



Suliasi Batikawai

Fiji Ministry of Health and Medical Services

Email: suliasi.batikawai@health.gov.fj

Vimal Deo

Fiji Ministry of Health and Medical Services

Email: vimal.deo@health.gov.fj

Waqairapoa Tikoisuva

UNICEF Pacific

Email: wtikoisuva@unicef.org

Maraia Meo

WHO Pacific

Email: meoma@who.int



Pathways to universal
and sustained
water, sanitation
and hygiene

