

STUDY
FOR RETROFITTING BARRIERS
ON EXISTING ROADS

EXECUTIVE SUMMARY

**Environmental Protection Department
Government of HKSAR**

March 2000

STUDY FOR RETROFITTING BARRIERS ON

EXISTING ROADS

Executive Summary

Content

- a. Background
- b. Study Approach
- c. Scoping Exercise
- d. Engineering Feasibility Study
- e. Review Exercise
- f. Conclusion

Appendices

- I. List of 18 at-grade roads identified from the scoping study [1994/95] for further investigation
- II. List of 11 flyovers identified from the scoping study [1996/97] for further investigation
- III. Working tools developed for reviewing of at-grade roads
- IV. Working tools developed for reviewing of flyovers
- V. List of the 655 noisy roads
- VI. List of 29 road sections that could be retrofitted with noise mitigation measures such as barrier, semi-enclosure or enclosure
- VII. Examples of constraints

Background

1. Many people in Hong Kong are being exposed at home to high levels of traffic noise above the planning standard contained in the Hong Kong Planning Standards and Guidelines. This is due to factors including scarcity of habitable land, immense demand for housing, commuter and freight transport and insufficient attention on the environment during the rapid development in the 1970s and early 1980s.
2. Since the mid 1980s, the government has given attention to preempting traffic noise problems when planning land use and new roads. New road projects are required to go through the environmental impact assessment process to identify potential adverse environmental impacts and take steps to prevent their occurrence. The noise covers at Kwun Tong Bypass near Choi Hung Estate and Richland Gardens are successful examples of mitigation measures identified and provided through the planning process. However, the planning efforts alone could not solve the traffic noise problems already existed.
3. The government has also taken various steps including implementation of abatement programmes to tackle traffic noise. Under a Noise Abatement Measures in School Programme, classrooms affected by traffic noise are provided with good acoustic insulation and air-conditioning to restore a quieter environment for learning. Highways have been resurfaced with a low noise material to bring down the noise impacts on nearby dwellings. To ensure individual vehicles do not produce excessive noise, all vehicles including lorries and buses for first registration are required to comply with stringent noise emission standards following those adopted in Europe and Japan.
4. While the measures implemented or committed helped to improve the situation, they could not rectify all noise problems caused by the large fleet of vehicles on our roads. The government issued in 1993 the second review of the 1989 White Paper indicating the intention to review the practicality of reducing noise from existing roads. One possible way to do so is to retrofit barriers on existing roads to abate the noise. But, retrofitting barrier on existing road is by no means

straight forward since there are many constraints to be considered.

Study Approach

5. Given the large number of roads and residential developments in Hong Kong, it is necessary to adopt a reasonable and pragmatic approach to identify the roads which are causing noise problem and whether these roads could be retrofitted with noise mitigation measures in the form of barrier, cantilever barrier, semi-enclosure or enclosure. Mitigation measures such as resurfacing roads with low noise material being implemented under the existing policy are not repeated in this study.
6. There are over 3000 roads in the territory. Before establishing a particular road section is noisy and that it has the potential to be retrofitted with barrier, there is no point to go in too much details such as detailed investigation on conflicts with underground utilities. For obvious reasons, retrofitting measures should not compromise traffic safety or emergency vehicle access. With the assistance of a set of criteria established through the study, roads that are noisy and have potential for retrofitting barriers are scoped or screened for detailed investigation.
7. In the study, a road is taken to be a “noisy road” if noise from traffic on the road would exceed 70 dB(A) L10(1h) at the façade of noise sensitive receivers (NSRs) [planning noise standard at residential building recommended in the Hong Kong Planning Standards and Guidelines]. A road is taken to have the potential for retrofitting barriers if preliminary evaluation indicates there is no insurmountable constraints on that particular road to preclude direct mitigation measures in the form of barrier, cantilever barrier, semi-enclosure or enclosure.
8. Roads scoped or screened by the above process were then further investigated in the engineering feasibility study. In the engineering feasibility study, preliminary engineering designs on appropriate mitigation measures were carried out and site specific constraints including services and facilities underground and any side effects resulting from the implementation of mitigation measures were identified and evaluated. Specific aspects like space requirement,

road user safety, fire-fighting concern, ‘buildability’, environmental implication were carefully looked into. Problems that might occur due to the retrofitting noise mitigation measures were thoroughly considered to identify whether they were surmountable. Apart from providing advice on the type of mitigation measures that would be feasible to build on specific road sections being studied to abate noise, the engineering feasibility study also developed a set of guiding principles or criteria as “working tools” to facilitate review on the practicality of retrofitting barriers in other roads.

9. Using the “working tools” developed, a review on the noisy roads and flyovers in the territory was taken to ascertain those that are technically feasible for retrofitting mitigation measures.
10. A list of road section and/or flyover that could be retrofitted with barriers were compiled after the review.

Scoping Exercise

11. Scoping exercises were conducted in 1994/95 and 1996/97 for at-grade roads and flyovers respectively. The same approaches were adopted throughout the exercises.
12. Purpose of the scoping exercise was to:
 - a. establish a set of screening criteria for selection of noisy road that could be retrofitted with barriers;
 - b. conduct initial noise assessment so as to identify “noisy” road sections or flyovers;
 - c. appraise the noisy roads and flyovers on potential for retrofitting barriers; and
 - d. compile a list of road sections and flyovers that have potential for retrofitting barriers for further investigation.
13. To facilitate the scoping exercise, all existing road sections and flyovers were grouped into different categories i.e. expressway, primary roads, district roads and local access roads.
14. Noise sensitive receivers as defined in the Hong Kong Planning Standards and Guidelines were included for assessment. Courts of

law and educational institutions being provided with acoustic insulation and air-conditioning were not included in the scoping exercise.

15. To avoid duplicating efforts, existing road sections or flyovers under the following circumstances had been excluded from the screening process and noise assessment :

- a. the road section or flyover was being planned for widening or improvement with on going environmental impact assessment to identify adverse noise impacts and practicable noise mitigation measures;
- b. noise mitigation measures had already been provided or would be provided in accordance with previous EIA studies, (however, the scoping exercise also looked into location where there were vigorous traffic noise complaints);
- c. there was no existing NSRs in close proximity to the road section or flyover. This included situations where NSRs had been demolished or being redeveloped; and
- d. road section in tunnel or underpass since the enclosed road would not have significant noise impacts on sensitive uses.

16. Initial Noise Assessment had been conducted to determine the extent of the noise impacts from existing road sections and flyovers on NSRs in the vicinity. To ensure consistency, the noise assessment followed the “Calculation of Road Traffic Noise” procedures developed by the United Kingdom Department of Transport, 1988. In order to provide representative situation for consideration while confining the data to a manageable size, noise levels at the nominal or typical façade of each road section or flyover had been assessed. The typical façade was taken to locate at a nominal distance from and at 5m above the road with 160 degree unscreened view of the road section or flyover ([not all buildings or flats near the road are exposed to the same high traffic noise level] since noise at individual flats would depend on height, location of the flats and any structure which may screen the line-of-sight to the road.) In addition, data and basic assumptions as outlined below were adopted for traffic noise assessment :

- a. traffic flows and percentages of heavy vehicle during peak traffic

hours published in the latest available “The Annual Traffic Census” were used;

- b. for roads with only annual daily traffic data available, the peak hour flows and percentages of heavy vehicles were proportioned from core traffic counting stations within the same group;
- c. the posted speed limit of each road type (i.e. 50 kph for urban roads, 70 or above kph for expressways) were used;
- d. the road gradient were categorized as 0, 3, 6, 9, 12 or 15% as estimated from 1:5000 survey maps; and
- e. as the traffic census include most roads where there were substantial traffic, roads with no available traffic data from the census were assumed not noisy in the study. This assumption was also supported by analysis of complaint records which indicated that these roads were not the target of traffic noise complaint.

17. Various government departments, including Fire Services Department, Transport Department, Housing Department, Highways Department and Territory Development Department have been consulted for their respective concerns related to safety requirement and operational constraints for erection of barriers on existing at-grade roads and flyovers. Although some of the known constraints and specific requirements could be overcome by appropriate engineering designs, the following constraints have been found insurmountable for retrofitting barriers on existing at-grade roads and flyovers where there are :-

- a. blockage or obstruction to fire fighting or emergency access;
- b. insufficient space for installation;
- c. violating safety sightline requirements;
- d. insufficient space between flyovers and NSRs as well as space for independent structural support in the case of flyovers;
- e. significant impact on public / business activities; and
- f. significant impact on existing road structures, i.e. flyovers, central dividers etc.

18. The initial noise assessment in the scoping exercise had identified 663 at-grade roads and 114 flyovers as noisy. [Remarks: For consistency in counting, sections of road under the same “name” have been rationalized following specific “name” of the road in later stage of the study. After rationalization, the number of roads and

flyovers that are noisy became 655.] After testing against various anticipated constraints, 18 at-grade roads and 11 flyovers had been shortlisted to be having potential for retrofitting barriers for further investigation.

19. Appendices I & II are list of the 18 at-grade roads and 11 flyovers recommended for further investigation.

Engineering Feasibility Study

20. The engineering feasibility study for the selected 18 at-grade road sections and the 3 selected flyovers commenced in 1996 and 1997 respectively after the scoping exercise.
21. The engineering feasibility study was to take on board a detailed engineering investigation of the road sections and flyovers that had been identified having potential for retrofitting in the scoping exercise. The engineering feasibility study had assessed different mitigation options for each road sections and flyovers in terms of acoustic effectiveness and potential conflicts with existing utilities, structure, foundation and pedestrian access. Compliance with road safety, fire fighting and emergency access requirements as stipulated in relevant codes of practice and government regulations were examined in the assessment. The best option for implementation in each case was obtained through a scheme evaluation system established for evaluating pros and cons of different options. The engineering feasibility study had also derived “working tools” from investigation results in the study for evaluating whether any particular at-grade road or flyover is engineering feasible for retrofitting barriers.
22. Due to development subsequent to the scoping exercise and for optimizing resources, the engineering feasibility study had finally looked into 14 at-grade roads and 3 flyovers. This was because 4 of the 18 at-grade roads shortlisted in the scoping exercise, namely Island Eastern Corridor, Hiram’s Highway, Tolo Highway and Ting Kok Road were under concurrent improvement and related environmental impact studies at that time and were thus excluded from the feasibility study. On the other hand, 3 flyovers (out of 11 identified in the scoping exercise) representing typical

flyover-receiver configurations and types of mitigation measures have been selected for detailed engineering feasibility study. This approach helped to optimize resources as well as the time required for the detailed study. The 3 flyovers studied were Kwai Chung Road Flyover, Tsing Tsuen Bridge and Ap Lei Chau Bridge.

23. In the course of the study, special attentions had been given in investigating whether there are insurmountable constraints in retrofitting barriers on at-grade roads or flyovers. Due consideration on the following aspects had been given in evaluating whether retrofitting barriers on a particular road is feasible:

- a. traffic engineering and road safety: noise barriers should not compromise road safety in any aspect or become a hazard to road user. Specific requirements such as visibility and sight stopping distance in relation to vehicle speed, acceleration and deceleration rates, horizontal and vertical alignments of road and driver behaviour were considered.
- b. fire fighting and emergency access: noise barriers should not obstruct the operation of emergency vehicles such as fire engines and ambulances nor equipment and plant such as fire hydrants and valves.
- c. space requirements: foundation of noise barriers should be kept clear from the underground infrastructure. The foundation should be wholly outside any box culverts, major pipelines and lot boundaries with a clearance of 1 to 3 m as appropriate.
- d. pedestrian access and street-level commercial activities: noise barriers should not obstruct pedestrian flows or interfere with street-level activities such as loading and unloading, vehicular access to buildings and commercial activities.
- e. environmental side effects: noise barriers should not aggravate or should minimize side effects of local air quality and visual / landscape impact.
- f. social impact: noise barriers should minimize social impacts such as severance of housing developments, creation of black spot for crime, accumulation of debris etc.

24. Key findings of the engineering feasibility studies are :-

- a. the feasibility of retrofitting barriers on existing roads and flyovers, would be highly dependent on local site constraints, the type and

- layout of noise sensitive developments to be protected.
- b. retrofitting noise mitigating measures in the form of barrier, cantilever barrier, semi-enclosure and / or enclosure were found feasible for most of the at-grade road sections studied. The exception was Tung Tau Tsuen Road where sightline problems concerning the safety of pedestrians and car drivers prohibit erection of any form of barriers there.
 - c. retrofitting noise mitigating measures in the form of barrier, cantilever barrier, semi-enclosure and / or enclosure on independent structures were found feasible for two flyovers studied while not feasible in the case of Kwai Chung Road Flyover. The main reason that Kwai Chung Road Flyover could not be retrofitted with barriers was due to lack of space for footings of the supporting structures.
 - d. a “working tool” or simplified assessment procedures as a set of guiding principles were derived for evaluating whether retrofitting barriers on particular road section or flyover is technically feasible. This helped to avoid having to go through lengthy assessment before committing to a detailed feasibility study.
25. The guiding principles developed for reviewing existing at-grade roads and flyovers are in Appendices III & IV respectively.

Review Based On The Guiding Principles

26. A review of roads territory-wide using the guiding principles derived was conducted in 1998/1999. The review was to identify, using the set of “working tool” developed in the engineering feasibility study, whether particular at-grade road or flyover, other than those studied in the engineering feasibility study, could be retrofitted with barriers. The review has taken into consideration the up-to-date information in road-receiver situation. The remaining 8 of the 11 flyovers screened in the scoping exercise had been included in the review.
27. The review had identified and tested in accordance with the established “working tool” to ascertain feasibility of retrofitting barriers on particular road as well as the type and extent of barrier. The review had also provided cost estimates of the recommended barriers for reference.
28. For the same reasons, the review also did not include road sections or

flyovers that were under circumstances as described in paragraph 15 above to avoid duplicating of efforts.

29. The review had examined all roads and flyovers. 655 roads (including flyovers) were identified as noisy. 9 at-grade road sections and 4 flyovers were identified in the review to be feasible for retrofitting barriers.
30. It should be noted that roads identified in the review as feasible for retrofitting barriers had not undergone detailed engineering feasibility nor investigation into the site condition. As such, the extent and actual siting of mitigation measures need to be verified prior to implementation.
31. Appendices V & VI list the 655 noisy roads and the 29 roads (including 6 flyovers) that are feasible for retrofitting barriers.

Conclusion

32. From the series of studies, it is identified that 29 existing roads (including 6 flyovers) are feasible to be provided with barriers at an estimated cost of HK\$ 2,340 million benefiting 24,000 dwellings.
33. As retrofitting barriers on 29 roads is a massive project, it is necessary to prioritize the noise mitigation works programme. It is recommended to accord higher priority to roads with high noise levels and large number of affected dwellings.
34. In pursuing the retrofitting programme, the design of the barriers should be carefully considered to prevent them from being unduly obtrusive. Possible design and the use of transparent material that would enhance the landscape and visual quality or make the project visually compatible with the surrounding should be fully explored. Visual impacts, air quality, maintenance as well as public disturbance during the construction should be carefully considered and minimized in detailed design of the barriers.

APPENDIX I

List of 18 at-grade roads identified from the scoping study [1994/95] for further investigation

1. Island Eastern Corridor (Tai Koo Shing)
2. Tung Tau Tsuen Road
3. Che Kung Miu Road
4. Tin Sam Street
5. Hung Mui Kuk Road
6. Tai Chung Kiu Road
7. Yuen Wo Road
8. Ma On Shan Road
9. Ting Kok Road (Yuen Sin Road to Brides Pool)
10. Po Lam Road North
11. Po Hong Road
12. Fung Shue Wo Road
13. Tuen Mun Road (Tsuen Wan, Tsing Lung Tau and Castle Peak Bay)
14. Castle Peak Road (Hung Sui Kiu and Ping Shan)
15. Hiram's Highway (Marina Cove)
16. Tolo Highway (Ma Liu Shui and Tai Po Kau)
17. Cheung Pei Shan Road
18. Junk Bay Road

APPENDIX II

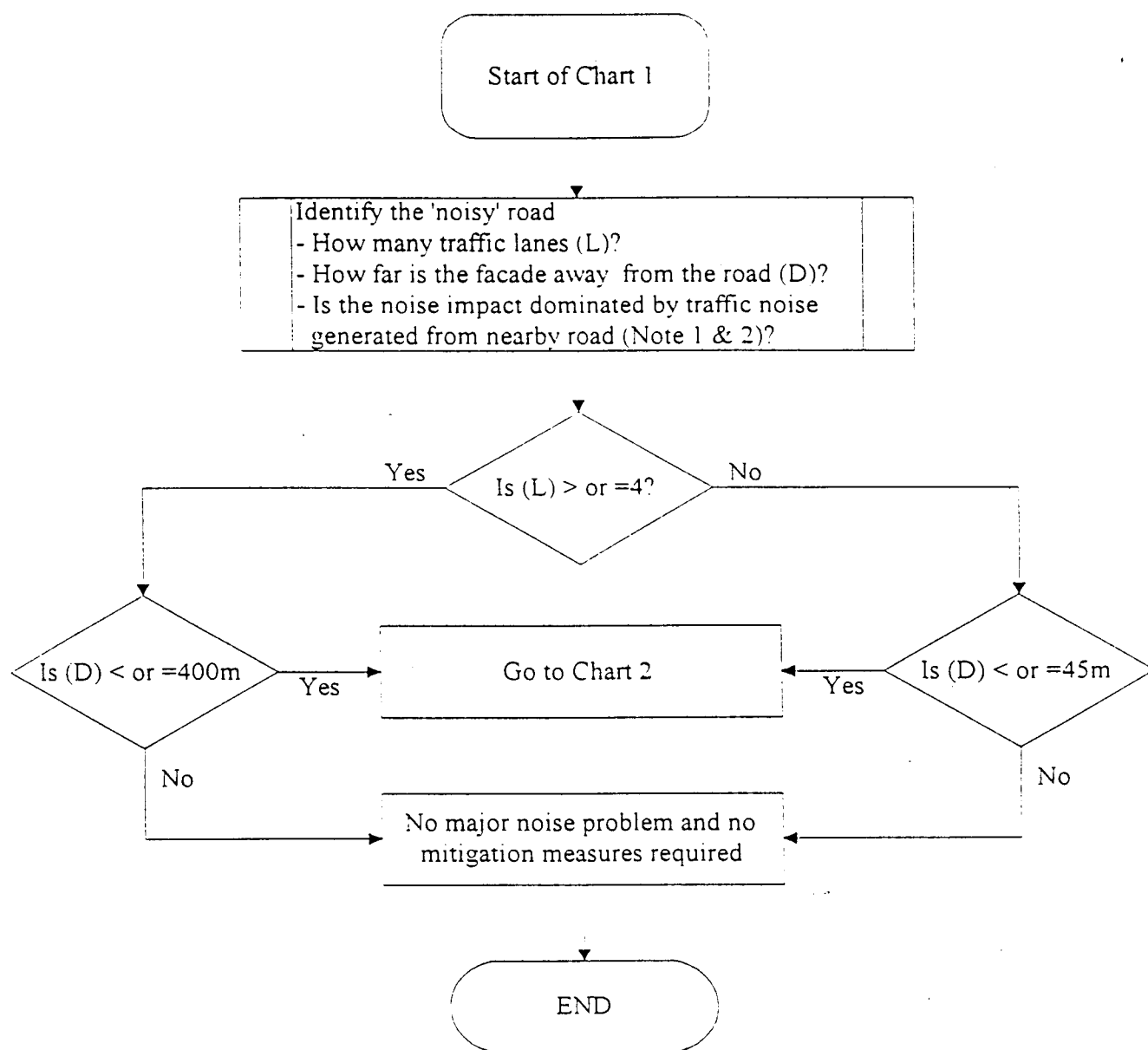
List of 11 flyovers identified from the scoping study [1996/97] for further investigation

	Flyover
1.	Tsing Tuen Road – near Riviera Gardens & Cheung On Estate
2.	Kwai Chung road – near Mei Foo Sun Chuen
3.	West Kowloon Corridor – between Willow Street & Tong Mi Road
4.	Tsuen Wan Road – near Clague Garden Estate
5.	Kwun Tong Bypass – near Laguna City
6.	Sha Tin Road – near City One Garden
7.	Island Eastern Corridor (IEC) – Oil Street to Tin Chiu Street
8.	IEC – near Heng Fa Chuen
9.	Tseung Kwan O Road – near Tsui Ping South Estate
10.	Kwai Chung Road – near Kwai Fong Estate
11.	Ap Lei Chau Bridge

APPENDIX III

Working tools developed for reviewing of at-grade roads

Chart 1 - Identification of Problems



Note 1: If the noise impact is dominated by traffic noise generated from other roads i.e. roads other than the one under investigation, no practical scheme should be provided for the road under investigation.

Note 2: Noise impacts from other roads are considered predominant if the following conditions apply:

- (a) Case 1: Other road has more or equal number of traffic lanes
The road is 50% closer to the receiver than the road under investigation, while the angle of view of the road is no less than 50%.
- (b) Case 2: Other road has 50% lesser number of traffic lanes
The road is more than 80% closer to the receiver while the angle of view of the road is similar.

Chart 2 - Selection of Barrier Forms

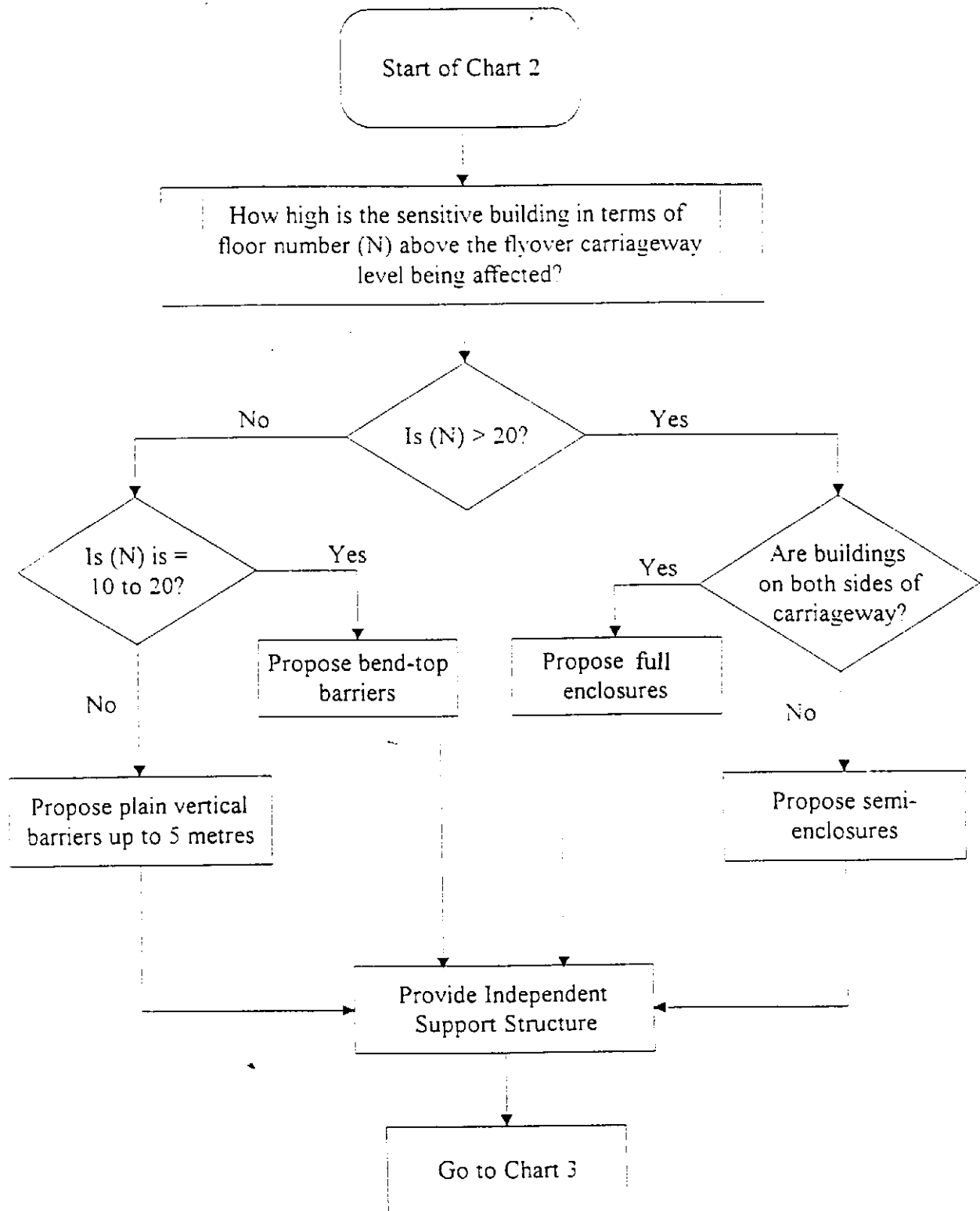
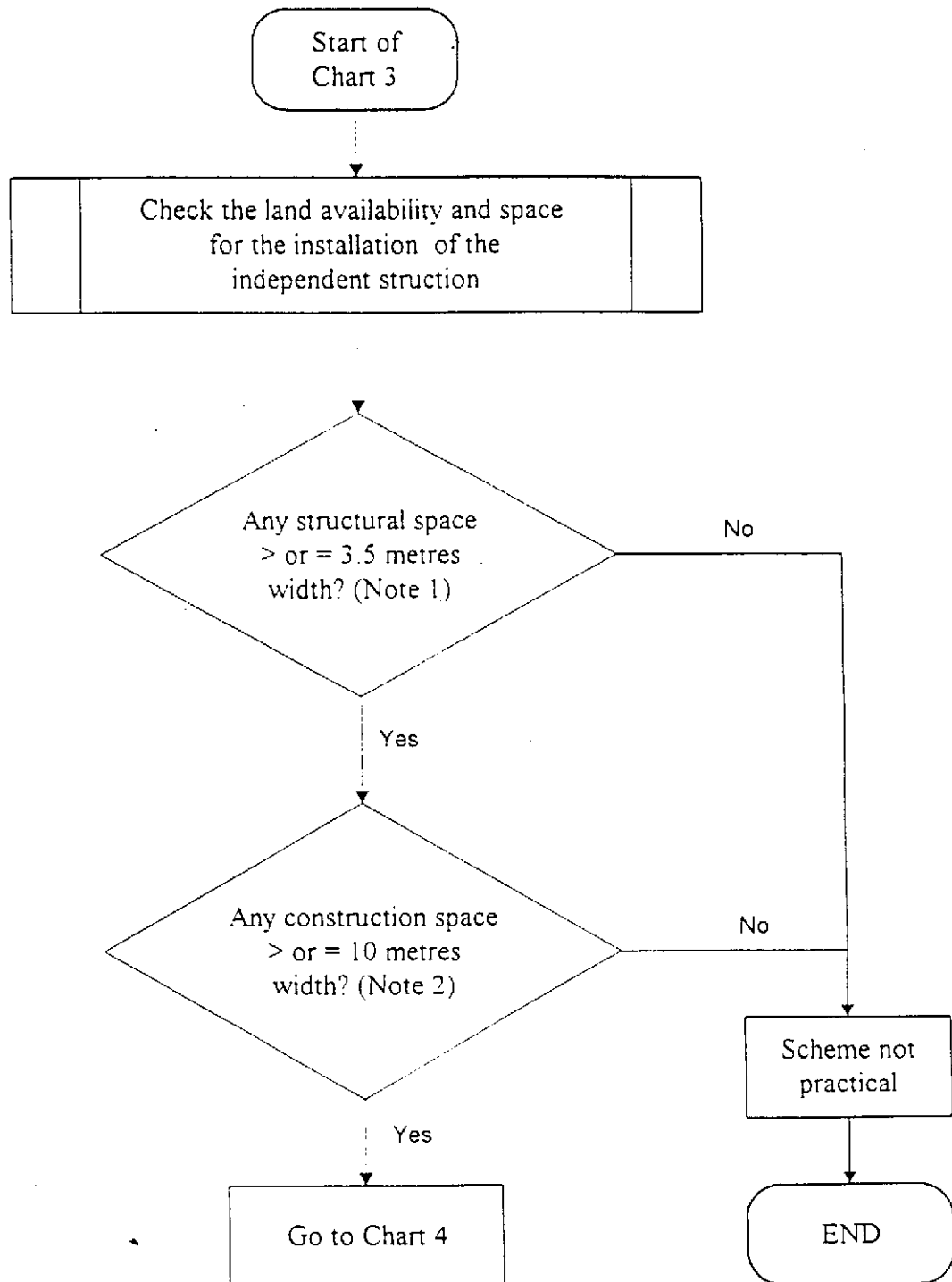


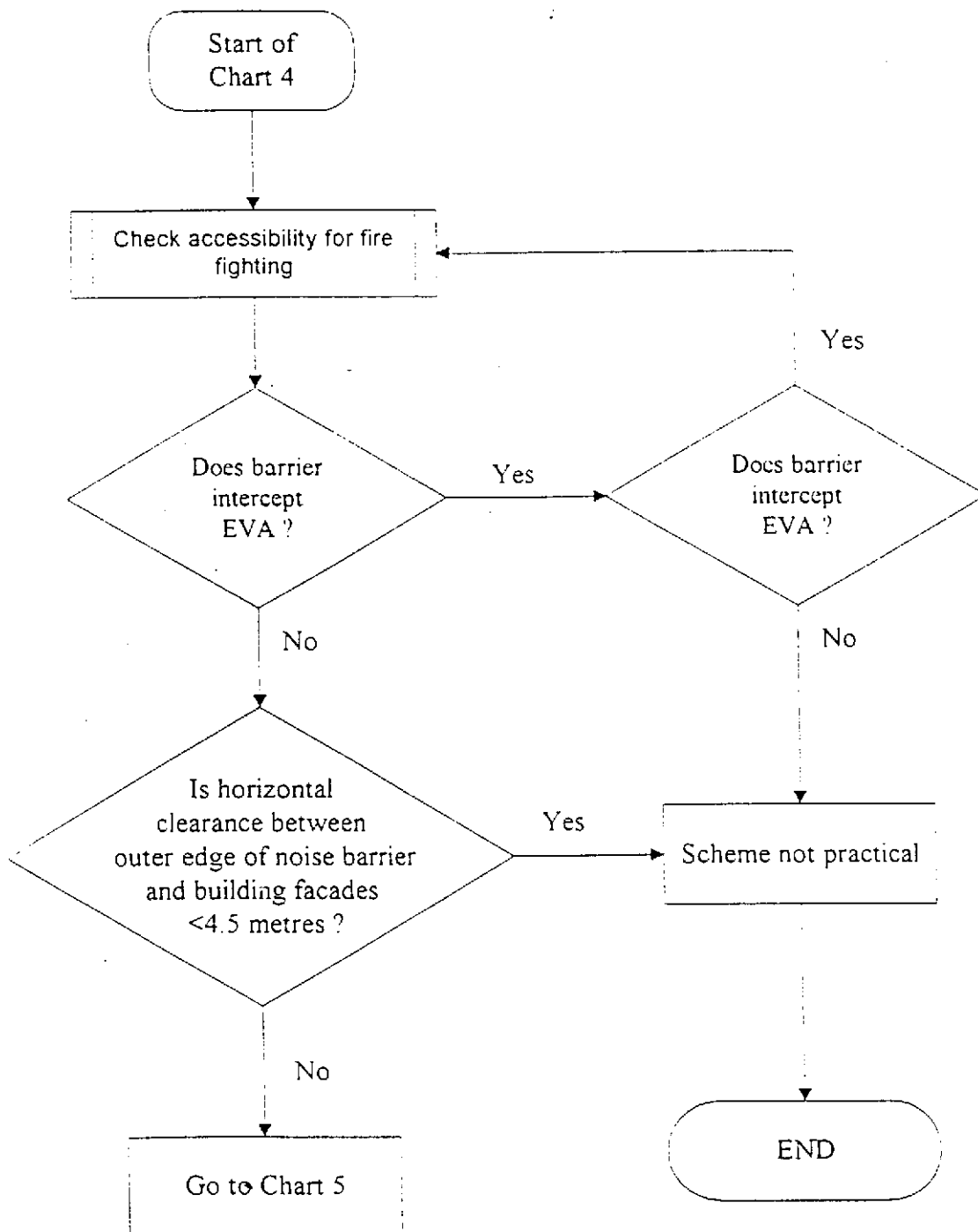
Chart 3 - Space/ Land Availability



Note 1 : Adequate structural space shall be provided for the installation of independent structure. In general, at least 3.5 m width strip of land will be required for locating the foundation of independent structure with reasonable maintenance clearance.

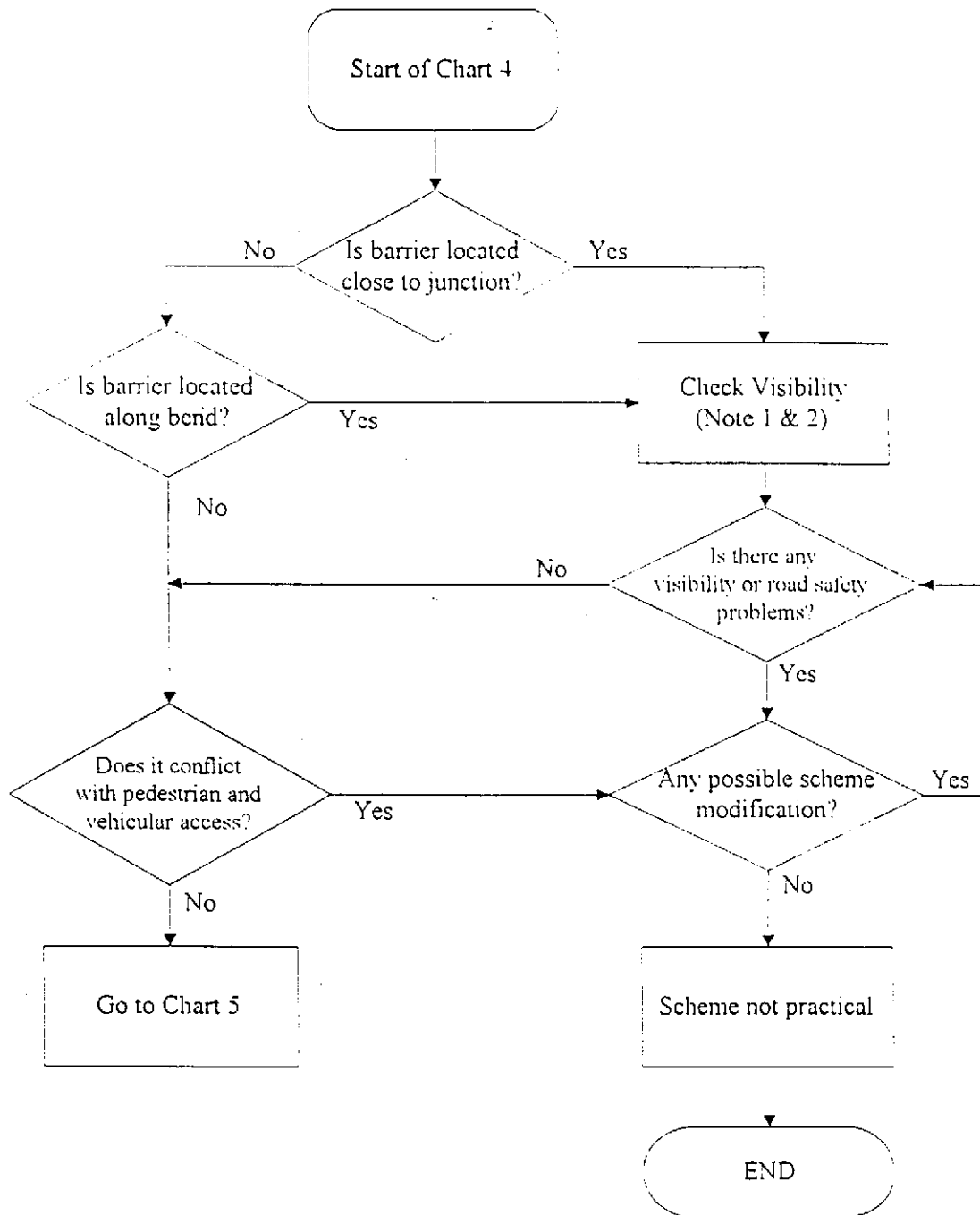
Note 2 : Adequate construction space shall be provide for the foundation works of independent structure. At least 10 m width strip of land will be required for operation of piling plants and excavation.

Chart 4 - Emergency Access and Fire Fighting Considerations



Note: EVA - Emergency Vehicular Access for fire fighting

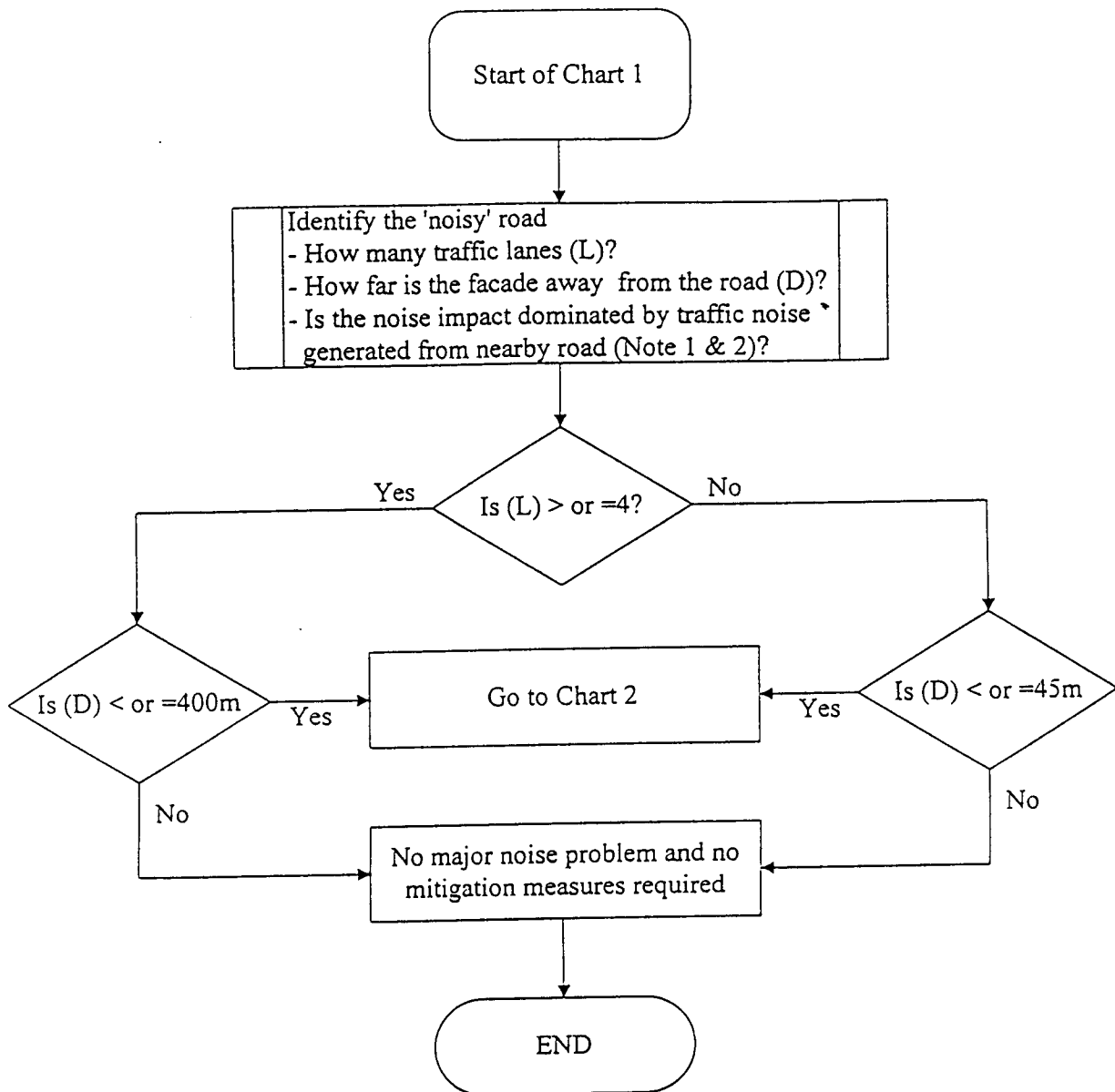
Chart 5 - Road Safety Considerations



APPENDIX IV

Working tools developed for reviewing of flyovers

Chart 1 - Identification of Problems



Note 1: If the noise impact is dominated by traffic noise generated from other roads i.e. roads other than the one under investigation, no practical scheme should be provided for the road under investigation.

Note 2: Noise impacts from other roads are considered predominant if the following conditions apply:

- (a) Case 1: Other road has more or equal number of traffic lanes
The road is 50% closer to the receiver than the road under investigation, while the angle of view of the road is no less than 50%.
- (b) Case 2: Other road has 50% lesser number of traffic lanes
The road is more than 80% closer to the receiver while the angle of view of the road is similar.

M15698/chart1.vsd

Maunsell

TITLE

Chart 1 - Identification of Problems

MAUNSELL ENVIRONMENTAL
MANAGEMENT CONSULTANTS LTD

PROJECT NO

M15698

DATE

Dec. 1998

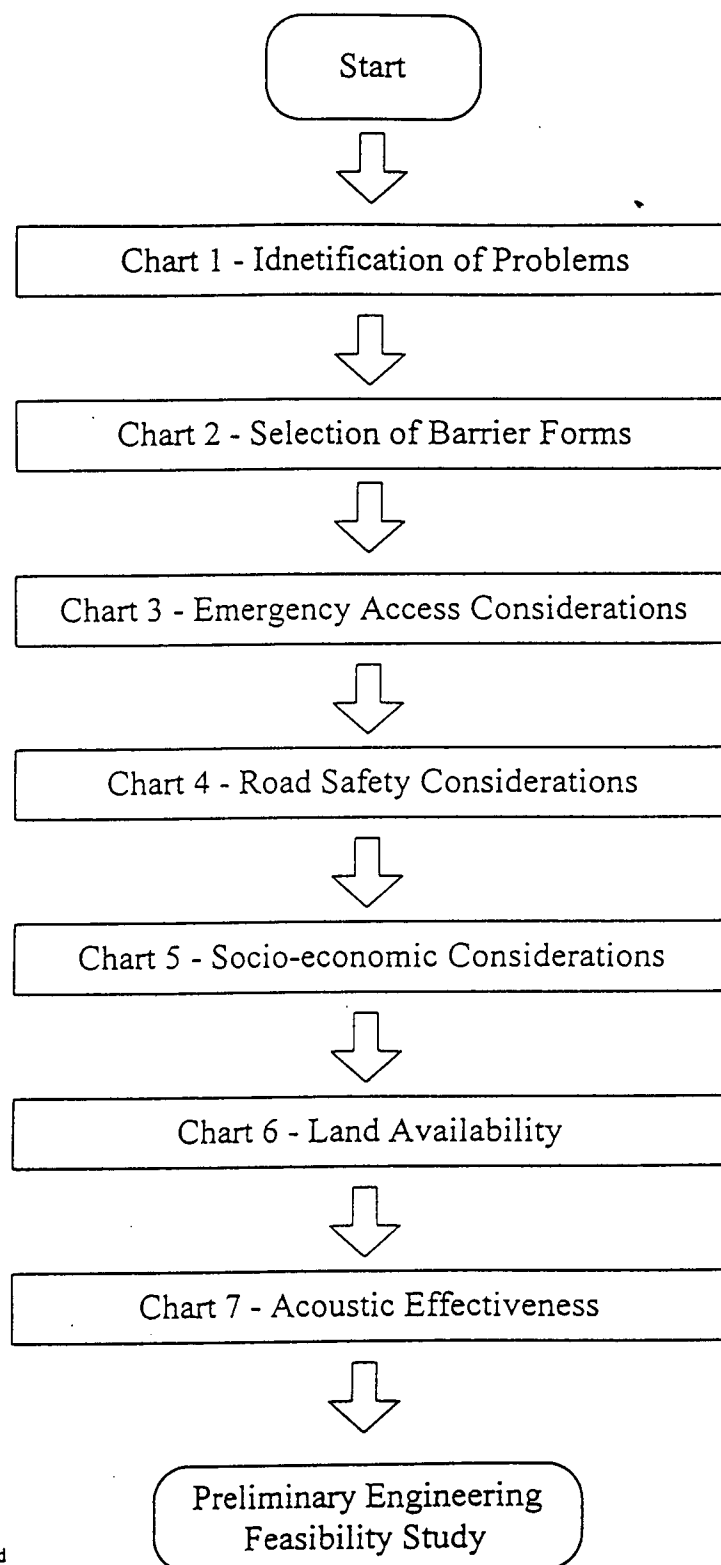
DESIGNED/
CHECKED

Wendy Tao

DRAWING NO

Figure 2.2

Simplified Assessment Procedures



M15698\simply.vsd

Maunsell

TITLE

Simplified Assessment Procedures

MAUNSELL ENVIRONMENTAL
MANAGEMENT CONSULTANTS LTD

PROJECT NO

M15698

DATE

Dec. 1998

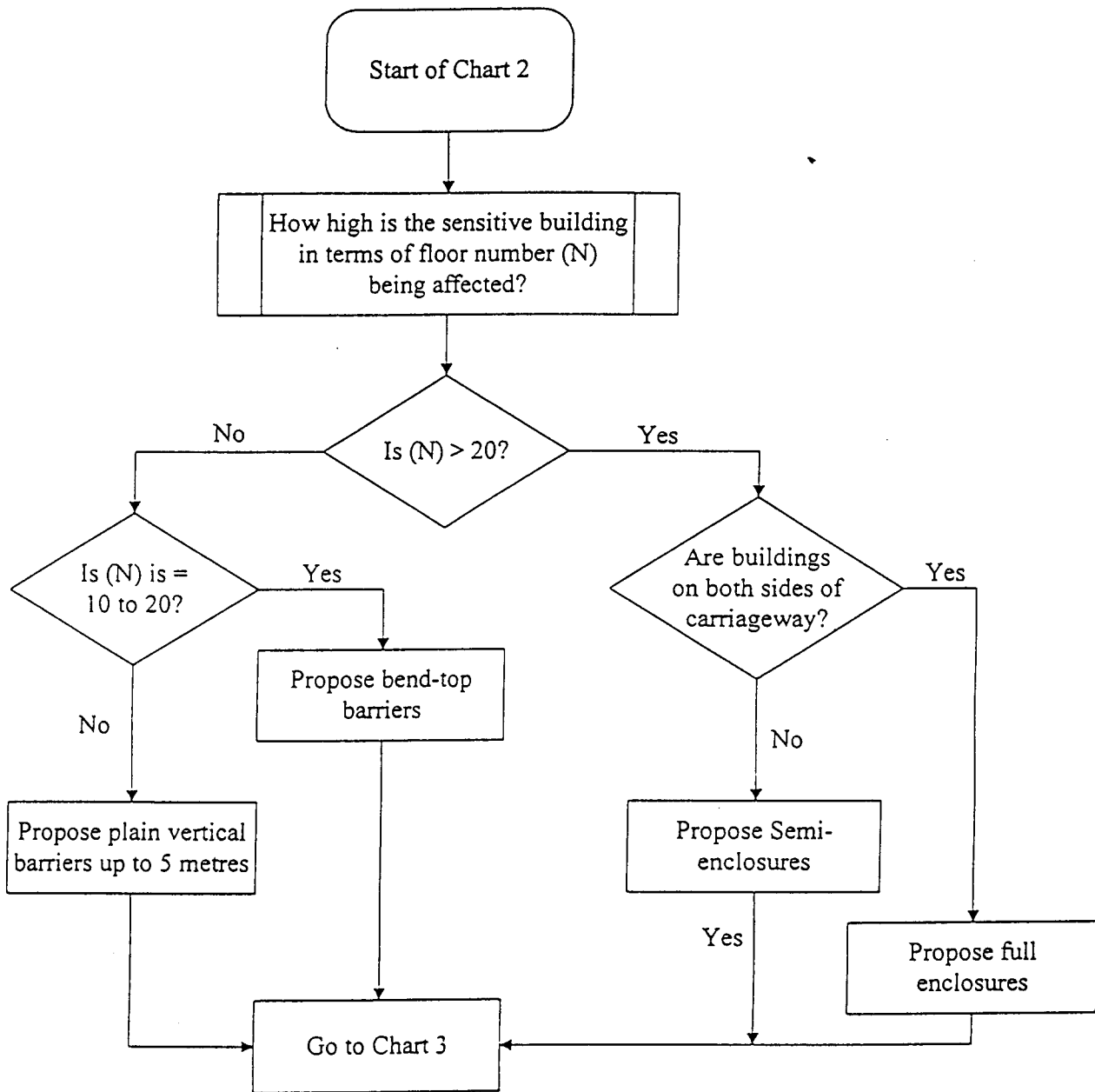
DESIGNED/
CHECKED

Wendy Tao

DRAWING NO

Figure 2.1

Chart 2 - Selection of Barrier Forms



M15698/chart2.vsd

Maunsell

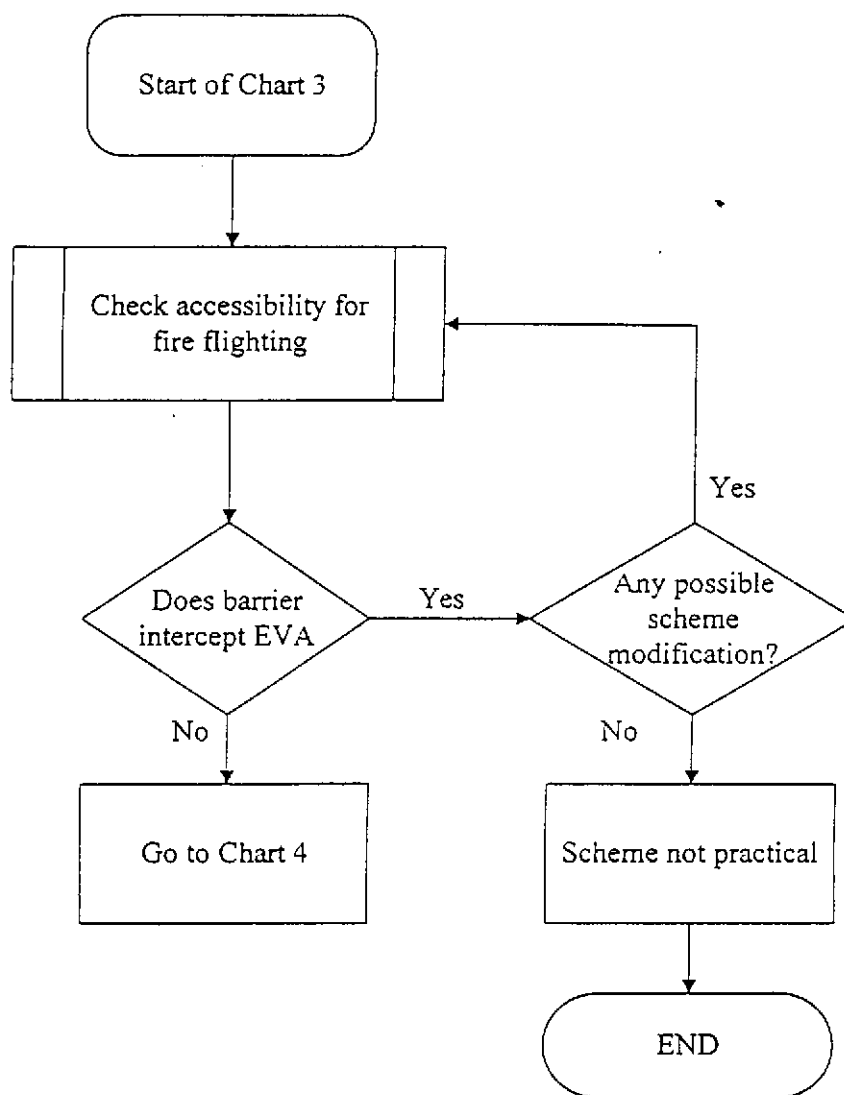
TITLE

Chart 2 - Selection of Barrier Forms

MAUNSELL ENVIRONMENTAL
MANAGEMENT CONSULTANTS LTD

PROJECT NO	M15698	DATE	Dec. 1998
DESIGNED/ CHECKED	Wendy Tao	DRAWING NO	Figure 2.3

Chart 3 - Emergency Access Considerations



M15698/chart3.vsd

Maunsell

TITLE

Chart 3 - Emergency Access Considerations

MAUNSELL ENVIRONMENTAL
MANAGEMENT CONSULTANTS LTD

PROJECT NO

M15698

DATE

Dec. 1998

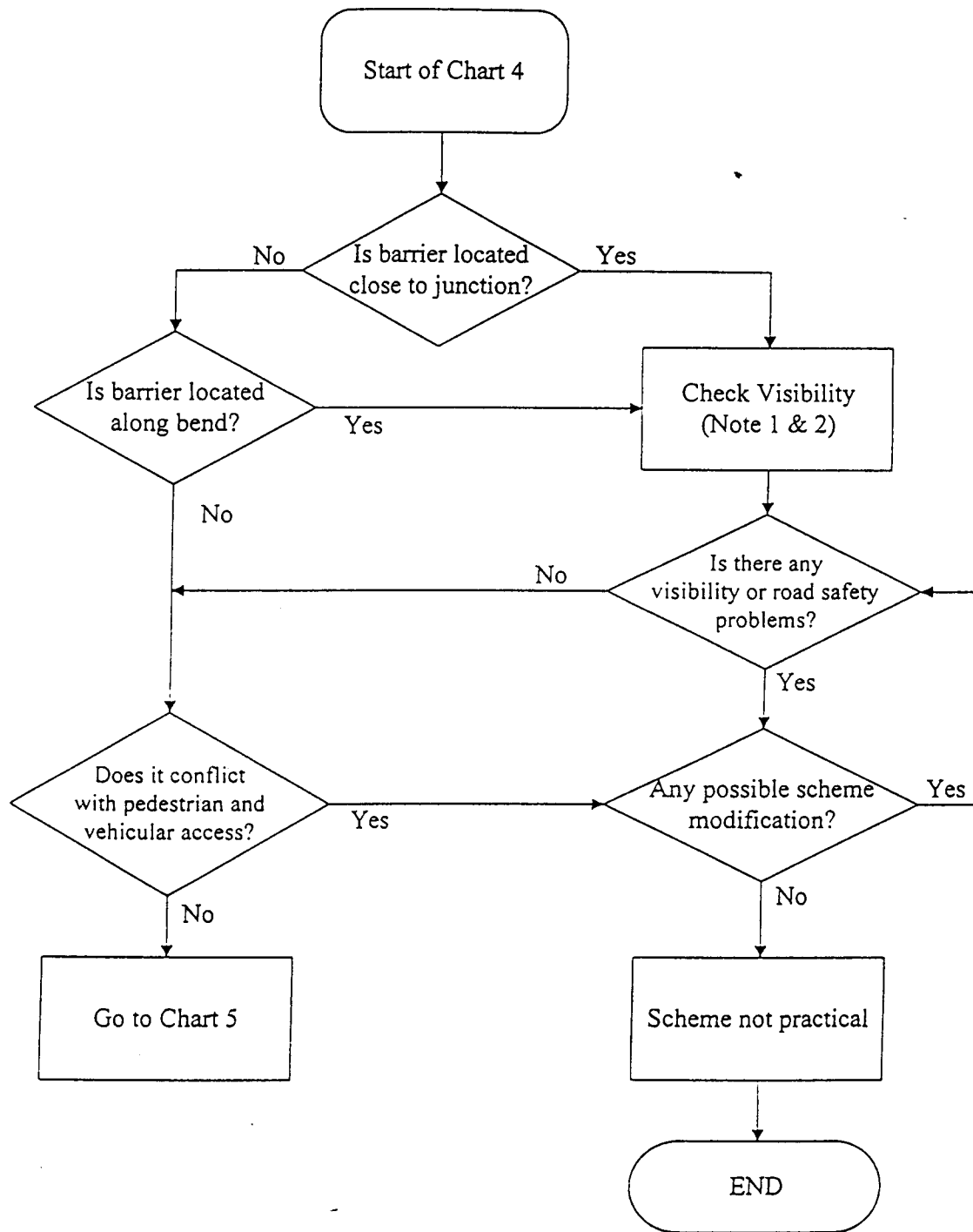
DESIGNED
CHECKED

Wendy Tao

DRAWING NO

Figure 2.4

Chart 4 - Road Safety Considerations



Note 1: See Figures 9 to 13 for sightline requirements.

Note 2: It is considered impracticable to install barriers within 15m of the "Give Way" line of a roundabout.

M15698/chart4.vsd

Maunsell

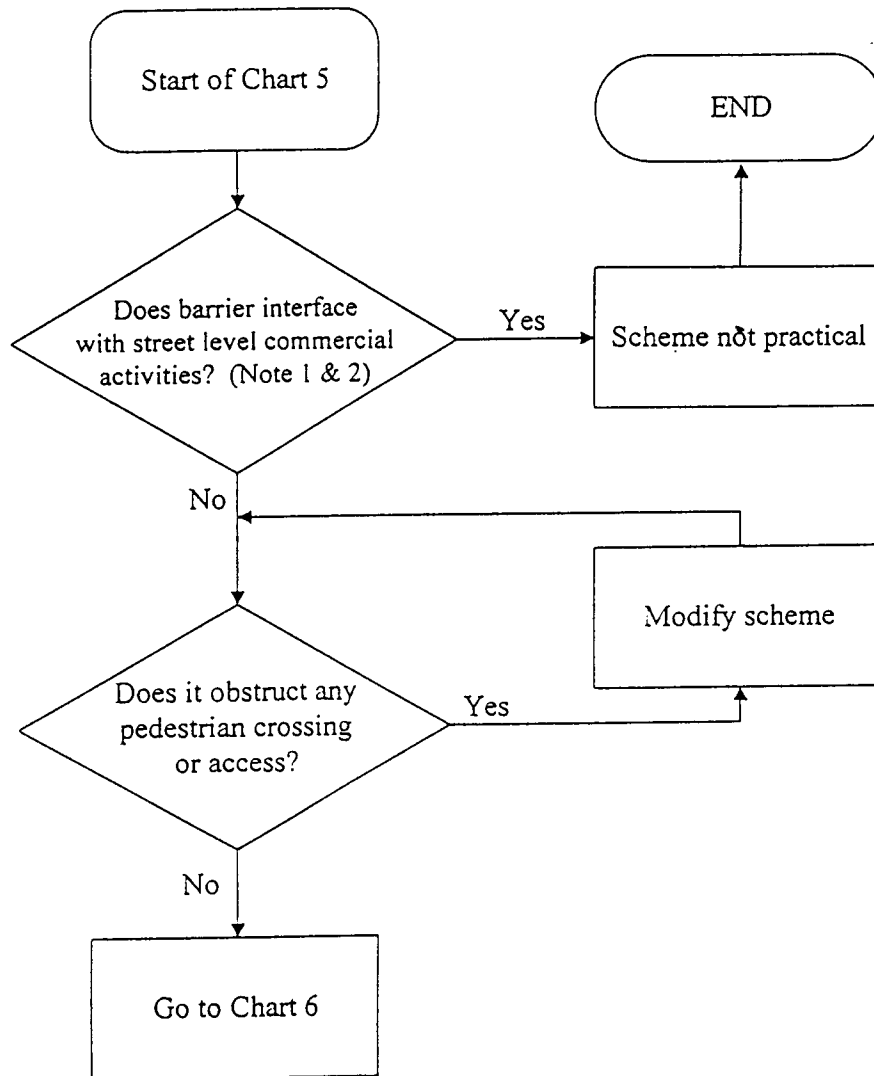
TITLE

Chart 4 - Road Safety Considerations

MAUNSELL ENVIRONMENTAL
MANAGEMENT CONSULTANTS LTD

PROJECT NO	M15698	DATE	Dec. 1998
DESIGNED CHECKED	Wendy Tao	DRAWING NO	Figure 2.5

Chart 5 - Socio-economic Considerations



Note 1: Street level commercial activities include all shops, restaurant, cinemas, etc.

Note 2: Street level commercial activities are considered to be seriously interfered when the clearance between the affected shops, restaurant, cinemas, etc and the identified barrier is less than 10 metres.

M15698/chart5.vsd

Maunsell

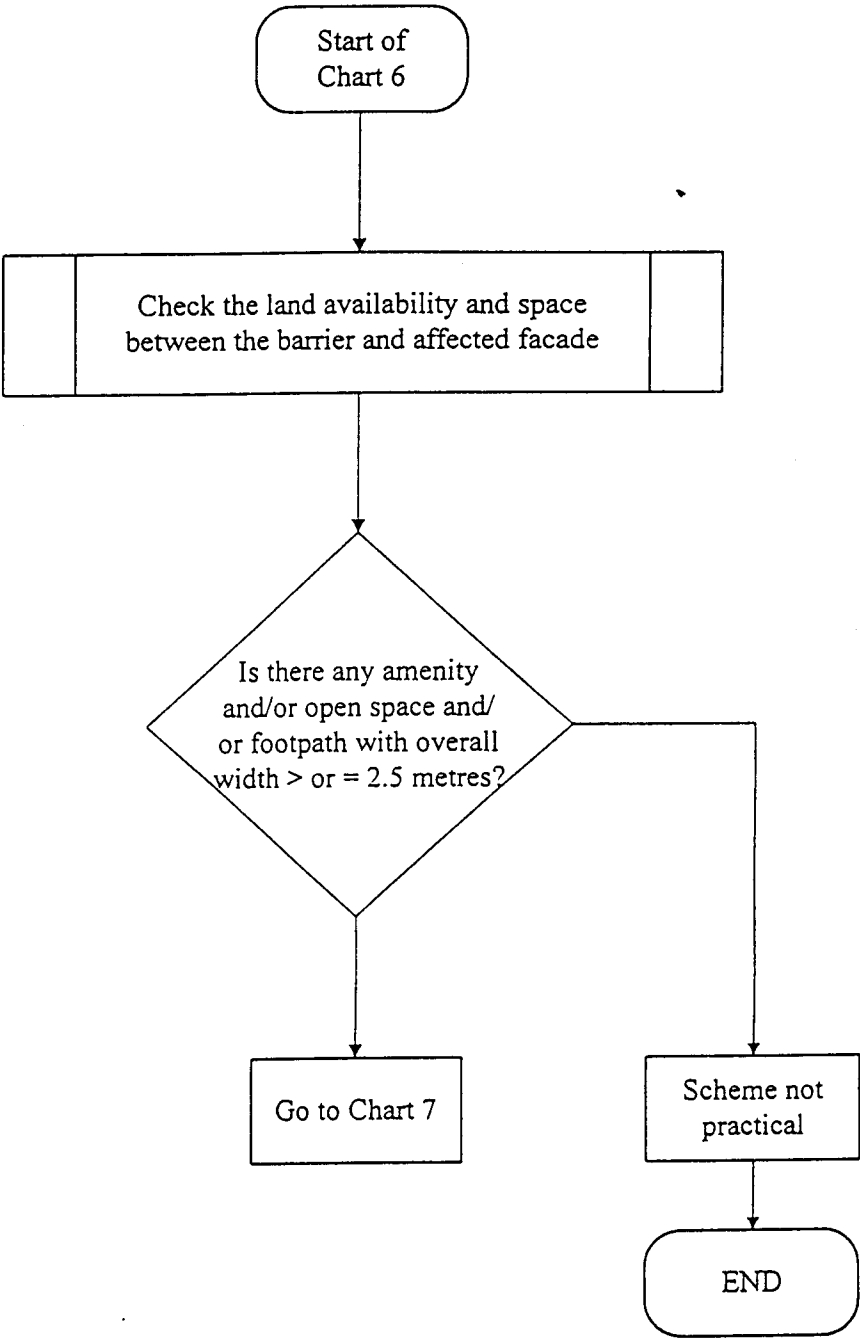
TITLE

Chart 5 - Socio-economic Considerations

MAUNSELL ENVIRONMENTAL
MANAGEMENT CONSULTANTS LTD

PROJECT NO	M15698	DATE	Dec. 1998
DESIGNED/ CHECKED	Wendy Tao	DRAWING NO	Figure 2.6

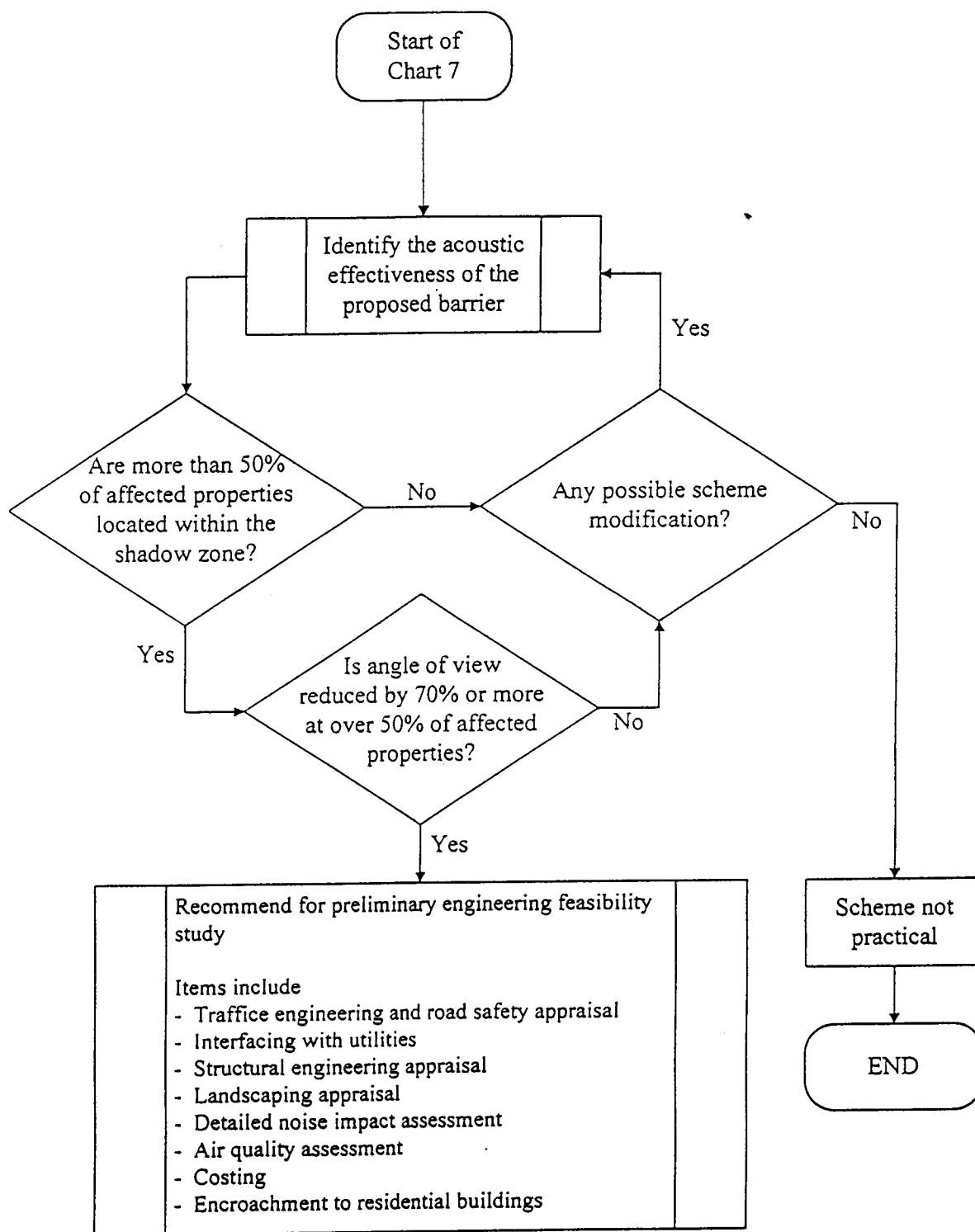
Chart 6 - Land Availability



M15698\land.vsd

Maunsell	TITLE Chart 6 - Land Availability	MAUNSELL ENVIRONMENTAL MANAGEMENT CONSULTANTS LTD		
		PROJECT NO	M15698	DATE Dec. 1998
		DESIGNED/ CHECKED	Wendy Tao	DRAWING NO Figure 2.7

Chart 7 - Acoustic Effectiveness



M15698\acoustic.vsd

Maunsell

TITLE

Chart 7 - Acoustic Effectiveness

MAUNSELL ENVIRONMENTAL
MANAGEMENT CONSULTANTS LTD

PROJECT NO

M15698

DATE

Dec. 1998

DESIGNED/
CHECKED

Wendy Tao

DRAWING NO

Figure 2.8

APPENDIX V

List of the 655 noisy roads

List of Existing Roads with Traffic Noise Exceeding 70 dB(A)

Reference Number	Road	Location	From	To
1 (S)	ABERDEEN MAIN ROAD	Aberdeen	junctions of Aberdeen Praya Road	Yue Kwong Road
2	ABERDEEN PRAYA ROAD	Aberdeen	Tin Wan Hill Road	Ap Lei Chau Bridge
3	ABERDEEN RESERVOIR ROAD	Aberdeen	Aberdeen Main Rd	Aberdeen Upper Reservoirs
4	ABERDEEN TUNNEL APPROACH	Aberdeen	Wong Chuk Hang Rd	Aberdeen Tunnel
5	ANCHOR STREET	Tai Kok Tsui	Tai Kok Tsui Road	Tong Mei Road
6 (B)	AP LEI CHAU BRIDGE	Aberdeen	Aberdeen Praya Road	Ap Lei Chau drive
7	AP LEI CHAU BRIDGE ROAD	Ap Lei Chau	Lei Chi Road	Lee Nam Road
8	ARBUTHNOT ROAD	Central	Wyndham Street	Caine Road
9	ARGYLE STREET	Mongkok	Argyle Street Children Playground	Gullane Road
			Soares Avenue	Tong Mi Road
10	ARGYLE STREET & FO<K11B>	Kowloon City	Prince Edward Road West	Kowloon City INT
11	ARGYLE STREET & FO<K13>	Mongkok & Ho Man Tin	Princess Margaret Road	Waterloo Road
12	ARRAN STREET	Prince Edward	Tong Mei Road	Lai Chi Kok Road
13	AUSTIN AVENUE & KIMBERLEY ROAD	Tsim Sha Tsui	Observatory Road	Austin Road
14	AUSTIN ROAD	Tsim Sha Tsui	Chatham Road South / Observatory Road	Nathan Road
			Nathan Road	Canton Road
15	BAILEY STREET	Hung Hom	Ma Tau Wai Road	Hung Hom Road
16	BAKER STREET	Hung Hom	Hung Hom Road	Chatham Road North
17	BELCHER'S STREET	Kennedy Town	Cadogan Street	Queen's Road West
18	BELCHER'S STREET & VICTORIA ROAD	Kennedy Town	Smithfield	Mount Davis Road
19	BISNEY ROAD	Mount Davis	junctions of Consort Rise	junctions of Consort Rise
20	BLUE POOL ROAD	Happy Valley	Wong Nai Chung Road	Tai Hang Road
21	BONHAM ROAD	Mid-Levels	Pok Fu Lam Road	Breezy Path
22	BORRETT ROAD	Mid-Levels	Island School	Hong Villa
23	BOUNDARY STREET	Sham Shui Po & Kowloon Tong	Ho Tung Road	Prince Edward Road West
			Sai Yee Street	Ho Tung Road
			Tung Chau Street	Nathan Road
24	BOUNDARY STREET FO	Sham Shui Po	Cheung Sha Wan Road	Sai Yee Street
25	BOUNDARY STREET & FO<K11A>	Kowloon Tong	La Salle Road	Juction Road
26	BRAEMAR HILL ROAD	North Point	K.C. College	Pui Kiu College
			K.C. College	Tin Hau Temple Road
27	BULKELEY STREET	Hung Hom	Chatham Road North	Dock Street
28	BUTTERFLY VALLEY ROAD	Lai Chi Kok	Castle Peak Road	Lai Chi Kok Reception Centre
29	CAINE ROAD	Mid-Levels	Hospital Road	Glenealy
30	CAMERON ROAD	Tim Sha Tsui	Nathan Road	Chatham Road South
31	CANAL ROAD FO<H110>	Causeway Bay	Sharp Street East	Aberdeen Tunnel North Portal
32	CANAL ROAD FO<H73>	Causeway Bay	Canal Rd FO<H110>	Canal Rd E & Canal Rd W
33	CANAL ROAD FO<H75 & H110>	Causeway Bay	Cross Harbour Tunnel S INT	Sharp St E
34	CANTON ROAD	Tsim Sha Tsui	Bowring Street	Haiphong Road
35	CARNARVON ROAD	Tsim Sha Tsui	Granville Road	Nathan Road

Legend: (B) = technically feasible to retrofit with noise barriers/enclosures

(S) = possible candidate for resurfacing with low noise surfacing material

FO<xx> = Flyover no. xx

Reference Number	Road	Location	From	To
36	CAROLINE HILL ROAD	Causeway Bay	South China Athletic Association	Leighton Road
			Leighton Road	Cotton Path
37	CARPENTER ROAD	Kowloon City	Junction Road	Lok Sin Road
38	CASTLE PEAK ROAD - SO KWAN WAT	So Kwun Wat	Tsing Lung Road	Hong Kong Gold Coast (Phase 1)
39	CASTLE PEAK ROAD - TAM MEI, MAI PO & SAN TIN	Tam Mei & San Tin	Fairview Park Boulevard	Lok Ma Chau Rd
40 (S)	CASTLE PEAK ROAD - CASTLE PEAK BAY	Tuen Mun	Tuen Mun Heung Sze Wui Road	So Kwun Wat
41 (B) (S)	CASTLE PEAK ROAD - HUNG SHUI KIU	Hung Shui Kiu	Hung Tin Road	Shun Tat Street
42	CASTLE PEAK ROAD - KWAI CHUNG	Kwai Chung	Texaco Road	Kin Chuen Street
			Greenknoll Court	Lee Muk Road
			off Chung Shan Terrace	-
			off Kau Wa Keng San Tsuen	-
			off Wah Yiu Road	-
43	CASTLE PEAK ROAD - KWAI CHUNG ACCESS ROADS A & B	Kwai Chung	Slip road to Texaco Rd N	Slip road to Texaco Rd
44	CASTLE PEAK ROAD - KWU TUNG	Kwu Tung	Fan Kam Road	Kwu Tung Road
45	CASTLE PEAK ROAD - LING NAN	Tuen Mun	Lam Tei INT	Fu Tei Road
46 (B)	CASTLE PEAK ROAD - PING SHAN	Ping Shan	Hung Tin Road	Ma Wang Road
47 (S)	CASTLE PEAK ROAD - SAN HUI	Tuen Mun	Tuen Mun Heung Sze Wui Road	Fu Tei Road
48	CASTLE PEAK ROAD - SHAM TSENG & TSING LUNG TAU	Sham Tseng to Tsing Lung Tau	Gemini Beaches	Rhine Terrace
			Rhine Garden	Sham Tseng Village
			Rhine Terrace	Rhine Garden
			Sham Tseng Village	Sea Crest Villa (phase 3)
			Hong Kong Garden	Ka Loon Tsuen
			Sea Crest Villa (phase 3)	Hong Kong Garden
49	CASTLE PEAK ROAD - TAI LAM	Tai Lam	Hong Kong Gold Coast (Phase 1)	Siu Lam Hosiptal
50	CASTLE PEAK ROAD - TING KAU	Ting Kau	Gemini Beaches	Blossom Terrace
51	CASTLE PEAK ROAD - TSUEN WAN	Tsuen Wan	Chung On Street	Texaco Road
			Blossom Terrace	Tuen Mun Road
			Tuen Mun Road	Chung On Street
52	CASTLE PEAK ROAD - TSUEN WAN RAMPS A & B	Tsuen Wan	Tuen Mun Road	Castle Peak Rd - Tsuen Wan
53	CASTLE PEAK ROAD - YUEN LONG	Yuen Long	Ma Wan Road	Po Oi INT
			Po Oi INT	Au Tau INT
54	CASTLE PEAK ROAD (KOWLOON)	Cheung Sha Wan	Kwong Cheung Street	Yen Chow Street
55	CASTLE ROAD	Mid-Levels	Caine Road	Robinson Road
56	CAUSEWAY BAY FO<H72> SB	Causeway Bay	Victoria Park Rd E-B	Gloucester Rd
57	CAUSEWAY ROAD	Tin Hau	Moreton Terrace	Tin Hau Temple Road
58	CENTRE STREET	Sai Yeung Pun	Connaught Road West	High Street
59	CHA KWO LING ROAD	Cha Kwo Ling	Ko Chiu Road	Shung Shun Street
			Shing Yip Street	Wai Yip Lane
			Tin Hau Temple	Ko Chiu Road
			Wai Yip Lane	Tin Hau Temple
60	CHAI WAN ROAD	Chai Wan	A Kung Ngan Road	Shau Kei Wan Road

Legend: (B) = technically feasible to retrofit with noise barriers/enclosures

(S) = possible candidate for resurfacing with low noise surfacing material

FO<xx> = Flyover no. xx

Reference Number	Road	Location	From	To
(B) - section "**"			Tai Tam Road	A Kung Ngam Road
			San Ha Street	Interchange (near New Jade Garden)
			Sun Yip Street	Wing Ping Street
			Wing Ping Street	Wing Tai Road
			Wan Tsui Road	Koway Court
			Wing Tai Road	San Ha Street (Eastbound)
			off Shan Tsui Court	-
			off Hing Man Estate *	-
			Interchange near New Jade Garden	Wan Tsui Road
61	CHAP WAI KON STREET	Shatin	Siu Lek Yuen Road	Ngan Shing Street
62	CHATHAM COURT	Tsim Sha Tsui	Chatham Road South	Kimberley Road
63	CHATHAM ROAD FO<K20>	Ho Man Tin	Gascoigne Rd	Princess Margaret Rd
64	CHATHAM ROAD NORTH	Hung Hom	San Lau St	Hong Chong Rd
65	CHATHAM ROAD NORTH & MA TAU WAI ROAD	Tokwwan & Ma Tau Wai	Sau Lau St	Chi Kiang St
66	CHATHAM ROAD SOUTH	Hung Hom	Salisbury Road	Austin Road
67	CHE KUNG MIU ROAD	Shatin	Hin Keng Street*	Lion Rock Tunnel Road*
(B) - section "**"			Hin Keng Estate	Hin Keng Street
68	CHEONG WAN ROAD	Hung Hom	Cheong Tung Road	Gillies Avenue South
69	GILLIES AVENUE SOUTH	Hung Hom	Hung Hom South St	Fat Kwong St
70	CHERRY STREET	Tai Kok Tsui	Tong Mi Road	New Kowloon Plaza
			Foo Kwai Street	Olympic Station
71	CHEUNG LEE STREET	Chai Wan	Hong Man Street	Ning Foo Street
72 (B)	CHEUNG PEI SHAN ROAD	Tsuen Wan	Tsuen Kam Interchange	Wo Yip Hop Interchange
73	CHEUNG SHA WAN ROAD	Cheung Sha Wan	Cheung Wah Street	Boundary Street
74	CHI FU ROAD	Aberdeen	Around Chi Fu Fa Yuen	Around Chi Fu Fa Yuen
75 (S)	CHI KIANG STREET	Ma Tau Kok	Kowloon City Road	Hoi Sham Park
76	CHING CHEUNG ROAD	Lai Chi Kok	off Ching Lai Court	-
77	CHING HONG ROAD	Tsing Yi	Tsing Yi Road	Chung Mei Road
78	CHING TAK STREET	Wong Tai Sin	Shatin Pass Road	Lung Lok House
			Tung Tau Tsuen Road	Lung Cheung Road
79 (S)	CHIU SHUN ROAD	Tseung Kwan O	Po Ning Road	Wan Po Road
80	CHOI HUNG ROAD	Choi Hung	Ning Yuen Road	Tseuk Luk Road
			Tseuk Luk Road	Po Kong Village Road
			Po Kong Village Road	Ha Yuen Leng
81	CHOI HUNG ROAD & FO<K10A>	Prince Edward	Prince Edward Rd E	End of down-ramp
82	CHOI HUNG ROAD FO<K10B>	Choi Hung	Choi Hung Rd	Prince Edward Rd E
83	CHOI YUEN ROAD	Sheung Shui	Pak Wo Road	Po Shek Wu Road
			Po Shek Wu Road	Choi Shun Street
84	CHUI TIN STREET	Tai Wai	Che Kung Miu Road	Hung Mui Kuk Road
85	CHUK YUEN ROAD	Wong Tai Sin	Nga Chuk Street	Chuk Yuen Road near Ka Keung Court
			Chuk Yuen Road near Tin Ma Court	Junction Road
86	CHUN WAH ROAD	Ngau Tau Kok	Choi Ha Road	Ngau Tau Kok Road
87	CHUNG MEI ROAD	Tsing Yi	Tsing Yi Heung Sze Wui Road	Ching Hong Road (Eastbound)

Legend: (B) = technically feasible to retrofit with noise barriers/enclosures

(S) = possible candidate for resurfacing with low noise surfacing material

FO<xx> = Flyover no. xx

Reference Number	Road	Location	From	To
88 (S)	CHUNG ON STREET	Tsuen Wan	Yeung Uk Road	Castle Peak Road (Tsuen Wan)
89	CLEAR WATER BAY ROAD (CLEAR WATER BAY PENINSULA)	Clear Water Bay Peninsula	Hang Hau	Tau Au Mun
90	CLEAR WATER BAY ROAD (KOWLOON)	Choi Hung	Lung Cheung Road	New Clear Water Bay Road Western Junction
			North Junction with New Clear Water Bay Road	Hip Wo Street South Junction with New Clear Water Bay Road
			New Clear Water Bay Road Eastern Junction	Anderson Road
91	CLEAR WATER BAY ROAD (TSENG LAN SHUE & PIK UK)	Tseng Lan Shue & Pik Uk	Anderson Road	Hiram's Highway
92	CLEAR WATER BAY ROAD (TSEUNG KWAN)	Tseung Kwan O	Hiram's Highway	Hang Hau
93	CLOUD VIEW ROAD	North Point	Yee King Road	Braemar Hill Road
			Tin Hau Temple Road	Concordia Lutheran School
94	CONDUIT ROAD	Mid-Levels	Kotewall Road	Glenealy
95	CONNAUGHT ROAD CENTRAL & WEST	Sheung Wan & Central	Wilmer Street	Cleverly Street
96	CONNAUGHT ROAD FO<H173>	Sheung Wan	Ramp near Gilman St	The nearest diverging & merging points west of Shun Tak Centre
97 (S)	CONNAUGHT ROAD WEST	Sheung Wan	Whitty Street	Wilmer Street
98	CORNWALL STREET	Shek Kip Mei	Beacon Hill Road	Waterloo Road
			slip road to Shek Kip Mei Park	Beacon Hill Road
99	COTTON TREE DRIVE	Central	Garden Road	Lower Albert Road
100 (S)	COX'S ROAD	Tsim Sha Tsui	Jordan Road	Austin Road
101	D'AGUILAR STREET	Central	Wellington Street	Wyndham Street
102	DEEP WATER BAY ROAD	Repulse Bay	Wong Nai Chung Gap Road	Service Reservoir (Covered)
			Shouson Hill Road	Island Road
			Service Reservoir (Covered)	Shouson Hill Road
103	DES VOEUX ROAD WEST	Sai Ying Pun	Kennedy Town New Praya	Connaught Road C
104	DOSSET CRESENT	Kowloon Tong	Waterloo Road	Cornwall Road
105	DUNDAS STREET	Mongkok	Waterloo Road	Ferry Street
106	EAST KOWLOON CORRIDOR FO	Ho Man Tin	San Shan Road	Fat Kwong Street
107	EASTERN ROAD & KAI SHING STREET	Kowloon Bay	Concorde Rd	Kai Cheung Rd
108	EASTERN STREET	Sheung Wan	Connaught Road West	Bonham Road
109 (S)	ELECTRIC ROAD	North Point	Gordon Road	Watson Street
			Watson Street	Oil Street
			Oil Street	Fuk Yuen Street
			Fuk Yuen Street	Tin Chong Street
110	ELECTRIC ROAD & JAVA ROAD	North Point	Power St	North Point Rd
111	ELECTRIC ROAD & LAU SIN STREET	North Point	Wing Hing St	Hing Fat St
112 (S)	EMBANKMENT ROAD	Prince Edward & Mongkok	Prince Edward Road West	Boundary Street
113 (S)	FA YUEN STREET	Mongkok	Prince Edward Road West	Dundas Street
			Boundary Street	Prince Edward Road West
114	FAN LENG LAU ROAD	Sha Tau Kok	Sha Tau Kok Road (Lung Yuek Tau)	Wo Tai Street (northbound)

Legend: (B) = technically feasible to retrofit with noise barriers/enclosures

(S) = possible candidate for resurfacing with low noise surfacing material

FO<xx> = Flyover no. xx

Reference Number	Road	Location	From	To
115	FANLING HIGHWAY (FAN LING & SHEUNG SHUI)	Fanling & Sheung Shui	Fan Ling	Sheung Shui
116	FANLING HIGHWAY (KWU TUNG & PAK SHEK)	Kwu Tung & Pak Shek	Kwu Tung	Pak Shek
117	FANLING HIGHWAY (WO HOP SHEK & TAI HANG)	Wo Hop Shek & Tai Hang	Wo Hop Shek INT	Lam Kam Road
118	FANLING HIGHWAY FO<N498> OVER FAN KAM ROAD INT	Sheung shui	Choi Yuen Estate	Tai Tau Leng
119	FANLING HIGHWAY RAMPS A & B	Fanling	So Kwun Po INT	Fanling Highway
120	FANLING HIGHWAYS SLIP ROADS A & B	Fanling	Fan Kam Rd INT	Fanling Highway
121	FAT KWONG STREET	Hung Hom	Princess Margaret Road	Man Yue Street
122	FAT KWONG STREET & FO<K66>	Hung Hom	Yan Fung Street	Hung Hom Road
123	FENWICK STREET	Wanchai	Harbour Road	Johnston Road
124	FERRY STREET	Yau Ma Tei	Argyle Street	Jordon Road
125	FLEMING ROAD	Wan Chai	Expo Drive East	Johnston Road
126	FO TAN ROAD	Fo Tan	Tak Chung Kiu Road	Kwei Tei Street
127	FORTRESS HILL ROAD	North Point	King's Road Clementi Middle School	Telephone Exchange Tin Hau Temple Road
128	FU MEI STREET	Wang Tau Hom	Chuk Yuen Road	Fung Mo Street
129	FU NING STREET	Ma Tau Wai	Argyle Street	Ma Tau Chung Road
130	FUK LO TSUN ROAD	Kowloon City	Prince Edward W	Carpenter Road
131	FUK WING STREET	Cheung Sha Wan	Castle Peak Road	Hing Wah Street
132	FUNG CHEUNG ROAD	Yuen Long	Castle Peak Road (Yuen Long)	Grand Del Sol
133	FUNG MO STREET	Diamond Hill	Fu Mei Street	Tung Tau Tsuen Road
134 (B)	FUNG SHUE WO ROAD	Tsing Yi	Tsing Yi Road West	Tsing Yi Heung Sze Wui Road
135	FUNG TAK ROAD	Diamond Hill	Shatin Pass Road Lung Poon Street	Lung Poon Street Hammer Hill Road
136	GARDEN ROAD	Admiralty	Citibank Tower	Magazine Gap Road
137	GASCOGNE ROAD FO<K20>	Jordan	Ramps to & from Gascoigne Road near Jordan Road	Chatham Road South
138	GASCOGNE ROAD	Ho Man Tin	Princess Margaret Road South	Nathan Road
139	GASCOIGNE ROAD FO<K37>	Jordan	Ferry St	Gascoigne Rd
140	GLENEALY & ALBANY ROAD	Mid-Levels	Robinson Road	Wyndham Street
141	GLOUCESTER ROAD	Wanchai	Fenwick Pier Street	Sugar Street
142	GLOUCESTER ROAD & VICTORIA PARK	Causeway Bay	Cross Harbour Tunnel S INT	Houston St
143	GLOUCESTER ROAD NB	Wanchai	Kingston St	Houston St
144	GORDON ROAD	Causeway Bay	Electric Road	Hing Fat Street
145	GRAMPIAN ROAD	Kowloon City	Dumbarton Road	Boundary Street
146	GREAT GEORGE STREET	Causeway Bay	East Point Road	Gloucester Road
147	HAIPHONG ROAD	Tsim Sha Tsui	Kowloon Park Drive	Nathan Road
148	HAMMER HILL ROAD	Diamond Hill	Po Kong Village Road	Choi Hung Road
149	HANKOW ROAD	Tsim Sha Tsui	Peking Road Haiphong Road	Salisbury Road Peking Road
150	HARBOUR ROAD	Wanchai	Fleming Road	Tonochy Road

Legend: (B) = technically feasible to retrofit with noise barriers/enclosures

(S) = possible candidate for resurfacing with low noise surfacing material

FO<xx> = Flyover no. xx

Reference Number	Road	Location	From	To
151	HEALTHY STREET WEST	Quarry Bay	King's Road	Police Quarters
152	HEALTHY STREET WEST & PAK FUK ROAD	Quarry Bay	King's Rd	Tin Hau Temple Road
153	HENG LAM STREET	Kowloon City	Junction Road	Fung Mo Street
154 (S)	HENNESSY ROAD	Wanchai	Arsenal Street	East Point Road
155	HENNESSY ROAD & YEE WO STREET	Causeway Bay	Percival St	Pennington St
156	HEREFORD ROAD	Kowloon Tong	Waterloo Road	Baptist University Road
157	HEUNG SZE WUI STREET	Tai Po	Po Heung Street	Wan Tau Street
158 (B)	HEUNG YIP ROAD	Wong Chuk Hang	Wong Chuk Hang Road	Ocean Park Road
159	HILL RD FO<H114>	Kennedy Town	Pok Fu Lam Road	Connaught Road W
160	HILL ROAD	Sai Ying Poon	St Anthony's Catholic Church	Des Voeux Road West
161	HING FAT STREET	Tai Hang	King Ming Road	Causeway Road
162	HING FONG ROAD	Kwai Chung	Kwai Chun Court - Hing Yat Hse Kwai Hing MTR Station	Multi-storey Car Park Kwai Tsing Interchange
163	HING FONG ROAD & KWAI HING ROAD	Kwai Chung	Wo Tong Tsui St	Tai Wo Hau Rd
164 (S)	HING WAH STREET	Cheung Sha Wan	Po On Road	Cheung Sha Wan Road
165	HIP WO STREET	Kwun Tong	Shun Lee Tsuen Road Mut Wah Street	Mut Wah Street Kwun Tong Road
166	HIRAM'S HIGHWAY	Sai Kung	Marina Cove	Po Tung Road
167	HIU KWONG ST	Sau Mau Ping	Hip Wo Street	TKO Tunnel Road
168	HO MAN TIN HILL ROAD	Mongkok	Ho Man Tin Street	Wylie Road
169	HO MAN TIN STREET	Mongkok	Waterloo Road	Ho Man Tin Hill Road
170	HOI CHU ROAD	Tuen Mun	Hoi Wong Road	Tuen Mun Heung Sze Wui Road
171	HOI KOK STREET	Tsuen Wan	Hoi Hing Road	Hoi Shing Road
172	HOLLYWOOD ROAD	Central	Queen's Road West	Pottinger Street
173	HOLY CROSS PATH	Sai Wan Ho	Sai Wan Ho Street	Hing Man Street
174	HONG CHONG ROAD	Hung Hom	On Wan Road	Chatham Road South
175	HONG LEE ROAD	Ngau Tau Kok	Kung Lok Road	Panorama Court
176	HONG NING ROAD	Kwun Tong	Hip Wo Street Ming Chi Street	Ming Chi Street Kwun Tong Road
177	HOP YICK ROAD	Yuen Long	Tai Tong Road	Fung Cheung Road
178	HOSPITAL ROAD	Sheung wan	Eastern Street	Caine Road
179	HUNG HOM ROAD	Hung Hom	Hung Hom South Road	Hok Yuen Street East
180	HUNG HOM SOUTH ROAD	Hung Hom	Gillies Avenue North	Hung Hom Road
181	HUNG MUI KUK ROAD	Shatin	Che Kung Miu Road*	Tin Sam Street*
(B) - section "**"			Tin Sum Street Lion Rock Tunnel Road	Lion Rock Tunnel Road Lion Rock Tunnel Road
182	IRVING STREET& PENNINGTON STREET	Causeway Bay	Leighton Rd	Yee Wo St
183	ISLAND EASTERN CORRIDOR (CHAI WAN)	Chai Wan	Wan Tsui Road Roundabout	Wing Tai Road Interchange
184	ISLAND EASTERN CORRIDOR (HENG FA CHUEN)	Chai Wan	A Kung Ngam Road	Heng Fa Chuen
185	ISLAND EASTERN CORRIDOR (NORTH POINT)	North Point	Oil Street	Tin Chui Street
186	ISLAND EASTERN CORRIDOR (SAI WAN HO)	Sai Wan Ho	Tai Hong Street Island Eastern Corridor Link <H158>	Tung Hei Road Tai Hong Street

Legend: (B) = technically feasible to retrofit with noise barriers/enclosures

(S) = possible candidate for resurfacing with low noise surfacing material

FO<xx> = Flyover no. xx

Reference Number	Road	Location	From	To
187	ISLAND EASTERN CORRIDOR (SHAU KEI WAN)	Shau Kei Wan	Tung Hei Road	A Kung Ngam Village Road
188	ISLAND EASTERN CORRIDOR (TAI KOO SHING)	Tai Koo Shing	off Tai Koo shing	-
189	ISLAND EASTERN CORRIDOR APPROACH	Shau Kei Wan	Aldrich Bay Road	Chai Wan Road
190	ISLAND EASTERN CORRIDOR UP-RAMP EB	Tai Koo Shing	Taikoo Wan Rd access road	Taikoo Shing Interchange eastern end
191	ISLAND EASTERN CORRIDOR DOWN-RAMP	Causeway Bay	Island Eastern Corridor	Hing Fat St
192	ISLAND EASTERN CORRIDOR DOWN-RAMP EB	North Point	Island Eastern Corridor E-B	Tong Shui Rd FO<H127> northern end
193	ISLAND EASTERN CORRIDOR SLIP ROAD WB	Shau Kei Wan	Sun Shing Street	Nam On Lane
194	ISLAND EASTERN CORRIDOR FO<H148>	Sai Wan Ho	Island Eastern Corridor Link FO<H158>	Tai Hong St
195	ISLAND EASTERN CORRIDOR LINK FO<H158>	Taikoo Shing	Hong On Street	Ramps to & from Island Eastern Corridor
196	ISLAND EASTERN CORRIDOR SLIP ROAD EB	Taikoo Shing	Taikoo Shing INT western end	Access road to Taikoo Wan Rd
197	ISLAND EASTERN CORRIDOR SLIP ROAD WB	Taikoo Shing	Taikoo Wan Rd access road	Taikoo Shing Interchange western end
198	ISLAND EASTERN CORRIDOR UP-RAMP	Causeway Bay	Hing Fat St	Island Eastern Corridor
199	ISLAND EASTERN CORRIDOR UP-RAMP WB	North Point	King's Road	Healthy Street INT
200	ISLAND EASTERN CORRIDOR UP-RAMP WB	North Point	Tong Shui Road	Island Eastern Corridor WB
201	ISLAND ROAD	Shouson Hill	Shouson Hill Road	Repluse Bay Road
202 (S)	JAVA ROAD	North Point	Tin Cheong Street	Tin Chiu Street
203 (S) - 2 sections	JOCKEY CLUB ROAD	Sheung Shui	Lung Sum Avenue	Po Shek Wu Road
			Sha Tau Kok Road	So Kwun Po Street
			Po Shek Wu Road	Po Wan Road
204 (S)	JOHNSTON ROAD	Wanchai	Hennessy Road	Luard Road
			O'Brien Road	Hennessy Road
			Luard Road	O' Brien Road
205	JORDAN ROAD	Yau Ma Tei	Gascoigne Road	Ferry Street
206	JUNCTION ROAD	Kowloon Tong	Heng Lam Street	Prince Edward Road West
			Broadcast Drive	Heng Lam Street
			Waterloo Road	Broadcast Drive
207	JUSTICE DRIVE	Admiralty	Queensway Road	Supreme Court Road
208	KADOORIE AVENUE	Mongkok	Argyle Street	Prince Edward Road West
209	KAI CHEUNG ROAD	Kowloon Bay	Wai Yip St	Wang Kwong Road
210	KAI CHEUNG ROAD FO<K56>	Kowloon Bay	Kai Fuk Road	Kai Cheung Road
211	KAI CHEUNG ROAD SLIP ROAD	Kowloon Bay	Wang Kwong Road	Kai Fuk Road
212	KAI FUK ROAD FO<K58>	Kowloon Bay	Wai Yip St	Kwun Tong Rd
213	KAI FUK ROAD FO<K58> DOWN-RAMP	Kowloon Bay	Kai Fuk Road	Kwun Tong Road

Legend: (B) = technically feasible to retrofit with noise barriers/enclosures

(S) = possible candidate for resurfacing with low noise surfacing material

FO<xx> = Flyover no. xx

Reference Number	Road	Location	From	To
214	KAI FUK ROAD FO<K58> UP-RAMP	Kowloon Bay	Kwun Tong Rd E-B	Kai Fuk Rd FO<K58>
215	KAI LOK STREET	Kowloon Bay	Shui Ning Street	Shui Wo Street
216	KAI TAK AIRPORT FO<K72>	Kowloon City	Prince Edward Rd E	Departure Circuit
217	KAI TAK AIRPORT FO<K73>	Kowloon City	Departure Circuit	Prince Edward Road E
218	KAI TIN ROAD	Lam Tin	Lei Yue Mun Road	Tseung Kwan O Road
219	KANSU ST	Yau Ma Tei	Canton Road	Nathan Road
220	KAU PUI LUNG STREET	To Kwa Wan	Chi Kiang Street	Tin Kwong Road
221	KAU YUK ROAD	Yuen Long	Yuen Long Tai Yuk Road	Tai Tong Road
222	KENG HAU ROAD & CHE KUNG MUI ROAD	Tai Wai	Tai Po Rd-Shatin Heights	Tin Sam St
223	KENNEDY ROAD	Mid-Levels	Borrett Road	Bowen Drive
			Calder Path	Macdonnell Road
			Macdonnell Rd	Borrett Road
			Bowen Drive	Queen's Road East
			Cotton Tree Drive	Calder Path
224	KENT ROAD	Kowloon Tong	Cornwall Street	Suffolk Road
225	KIK YEUNG ROAD	Yuen Long	Yuen Long On Ning Road	Castle Peak Road (Yuen Long)
226	KI LUNG STREET	Sham Shui Po	Yen Chow Street	Porland Street
227 (S)	KIMBERLEY ROAD	Tsim Sha Tsui	Austin Avenue	Nathan Road
228 (S)	KING'S ROAD	North Point	Tin Hau Temple Road	Mercury Street
			Tong Shui Road	Tin Chiu Street
			Mercury Street	Tong Shui Road
			Tin Chiu Street	Healthy Street West
			Greig Road	Taikoo Shing Road
			Java Road	Greig Road
			Healthy Street West	Java Road
229 (S)	KINGSTON STREET	Causeway Bay	Gloucester Road	Paterson Street
230	KNIGHT STREET	Prince Edward	Boundary Street	Prince Edward Road West
231	KO FONG STREET	Kwai Chung	Shing Fong Street	Hing Shing Road
232	KO CHIU ROAD	Lam Tin	Lei Yue Mun Road	Cha Kwo Ling Road
			Pik Wan Road	Ko Yee Estate - Tennis Court
233	KO SHAN ROAD	Ma Tau Kok	Chi Kiang Street	Pak Kung Street
234	KORNHILL ROAD	Taikoo Shing	off Kornhill Plaza	-
235	KOTEWALL RD	Mid-Levels	University Drive	Robinson Road
			off Hatton House	-
236	KOWLOON CITY ROAD	Kowloon City	Sung Wong Toi Road	Ma Tau Kok Road
237	KOWLOON CITY ROAD NB	Kowloon City	San Shan Rd	Sung Wong Toi Rd
238	KOWLOON PARK DRIVE	Tsim Sha Tsui	Peking Road	Haiphong Road
239	KUK TING STREET	Yuen Long	Sai Tai Street	Castle Peak Road (Yuen Long)
240	KUNG LUK ROAD	Ngau Tau Kok	Kwai Shing Circuit	Kwai Shing Circuit
241	KWAI LUEN ROAD	Kwai Chung	East Junction with Kwai Shing Circuit	West Junction with Kwai Shing Circ
242 (S)	KWAI ON ROAD	Kwai Chung	Hing Fong Road	Kwai Chung Road
243	KWAI SHING CIRCUIT	Kwai Chung	Tai Wo Hau Road	Kwai Hau Street
			Kwai Hau St	slip road to Kwai Lok Temporary Housing Area

Legend: (B) = technically feasible to retrofit with noise barriers/enclosures

(S) = possible candidate for resurfacing with low noise surfacing material

FO<xx> = Flyover no. xx

Reference Number	Road	Location	From	To
			Kwai Chung Technical Institute	Tai Wo Hau Road
			off Kwai Shun Temporary Housing Area	-
			Kwai Lok Temporary Housing Area (slip road)	Lok Sin Tong Ku Chiu Man Secondary School
244	KWAI CHUNG ROAD (KWAI FONG & KWAI HING)	Kwai Chung	Kwai Fuk Rd	Castle Peak Road (Tsuen Wan)
245	KWAI CHUNG ROAD (LAI KING)	Lai King	Lai Chi Kok Bay Bridge	Kwai Fuk Rd
246	KWAI CHUNG ROAD FO (MEI FOO)	Mei Foo	Lai Chi Kok Bay Bridge	Lai Chi Kok Rd & Cheung Sha Wan Rd
247 (S)	KWAI FOO ROAD	Kwai Chung	Hing Fong Road	Kwai Chung Road
248	KWAI FUK ROAD	Kwai Chung	Texaco Road	CNEC Christian Collage Lee I Yao M
			CNEC Christian Collage Lee I Yao Memori	Lai King Hill Road
249	KWAI YI ROAD	Kwai Chung	Kwai Fuk Road	Kwai Foo Road
250	KWAI SHING CIRCUIT & SHING FUK STREET	Kwai Chung	Kwai Luen Rd	Kwai Fuk Rd
251	KWEI CHOW STREET	To Kwa Wan	King Wan Street	To Kwa Wan Road
252	KWONG FUK ROAD	Tai Po	Pak Shing Street	Nam Wan Road
253	KWUN TONG BYPASS<K77>	Kwun Tong	Cha Kwo Ling Road	Lei Yue Mun Road
(B) section "**"			Wai Yip Street*	Shing Yip Street*
254	KWUN TONG ROAD	Kwun Tong & Choi Hung	Choi Hung Road	Ping Shek Estate
			Ping Shek Estate	Choi Wan Road
			Yan Wing Building	Lai Yip Street
			How Ming Lane	Tsui Ping Road
			Telford Garden Block U1	Yan Wing Building
255	KWUN TONG ROAD FO	Choi Hung	Kwun Tong Road	Wai Yip Street
256	LA SALLE ROAD	Kowloon Tong	Renfrew Road	Prince Edward Road West
257	LAI KING HILL ROAD	Lai king	Joint Street	a slip road to Lai Chi Kok Salt Water Pumping Station
			Princess Margaret Hospital Road	section under Ching Cheung Road
258	LAI CHI KOK BAY BRIDGE	Lai Chi Kok	Mei Foo Sun Chuen	Ching Lai Court
259 (S)	LAI CHI KOK ROAD	Lai Chi Kok	Yen Chow Street	Nathan Road
260	LAI CHI KOK ROAD (GL)	Tai Kok Tsui	Prince Edward Road West	Tong Mei Rd
261	LAI CHI KOK ROAD FO<K38>	Lai Chi Kok	Prince Edward Road W	Lai Chi Kok Rd
262	LAI CHO ROAD	Kwai Chung	Joint Street	Lim Choi Street
263	LAI CHO ROAD, LAI YIU STREET & WAH YIU ROAD	Kwai Chung	Lai King Hill Rd	Lai Chi Ling Rd
264	LAI WAN ROAD	Lai Chi Kok	Bus Terminus	Mei Lai Road
			Mei Lai Road	Broadway Street
265	LANCASHIRE ROAD	Prince Edward	La Salle Road	Waterloo Road
266	LEE ON ROAD	Jordan Valley	New Clear Water Bay Road	Shun On Road
267	LEI MUK ROAD	Kwai Chung	Tai Pak Tin Street	Wo Yip Hop Road
			Wo Yip Hop Road	Kwai Chung Road
268	LEI YUE MUN ROAD	Lei Yue Mun	Sceneway Garden	Yau Tong Road
			Hoi Yuen Road	Sceneway Garden

Legend: (B) = technically feasible to retrofit with noise barriers/enclosures

(S) = possible candidate for resurfacing with low noise surfacing material

FO<xx> = Flyover no. xx

Reference Number	Road	Location	From	To
269	LEIGHTON ROAD	Causeway Bay	Hoi Ping Road	Percival Street
			Percival Street	Canal Street East
270	LIN SHING ROAD	Chai Wan	Wan Tsui Road	Wah Ha Street
			Wah Ha Street	Cape Collinson
271	LIN TAK ROAD	Lam Tin	Pik Wan Road	TKO Road
272	LION ROCK ROAD	Kowloon City	Prince Edward W	Carpenter Road
273	LION ROCK TUNNEL ROAD (HUNG MUI KUK TO SUN TIN WAI)	Shatin	Hung Mui Kuk Road	Sha Tin Road
274	LION ROCK TUNNEL ROAD (HUNG MUI KUK TO TUNNEL)	Tai Wai	Hung Mui Kuk Road	Lion Rock Tunnel
275 (S)	LION ROCK TUNNEL ROAD (SHA TIN TAU)	Shatin	Sha Tin Road	Tai Po Road - Shatin
276	LO WAI ROAD	Tsuen Wan	Yi Pei Chun Road	Yuen Yuen Institute
277 (S)	LOCKHART ROAD	Wanchai & Causeway Bay	Fenwick Street	Luard Road
			Luard Road	East Point Road
278	LOK SHING STREET	Shatin	Hang Seng Street	Pak Tak Street
			Po Shing Street	Hang Seng Street
279	LOK KING STREET	Shatin	Fo Tan Road	Jubilee Garden
280	LOK SIN ROAD	Kowloon City	Tak Ku Ling Road	Choi Hung Road
281 (S)	LOMOND ROAD	Mongkok	Prince Edward Road West	Argyle Street
282 (S)	LONG PING ROAD	Yuen Long	Fuk Hi Street	Fung Chi Road
283	LONG TIN ROAD	Yuen Long	Yuen Long Highway	Shui Pin Wai INT
284	LONG YAT ROAD	Yuen Long	Castle Peak Road - Yuen Long	Castle Peak Road - Yuen Long
285	LONG YIP STREET & YUEN LONG ON LOK ROAD	Yuen Long	Wang Lok St	Castle Peak Road - Yuen Long
286	LONG YIP STREET FO<N192>	Yuen Long	Long Yip Street	Castle Peak Road - Yuen Long
287	LONG YUET STREET	To Kwa Wan	San Ma Tau St	Kwei Chow St
288	LUARD ROAD	Wan Chai	Gloucester Road	Johnston Road
289	LUK HOP STREET	San Po Kong	Tai Yau Street	Sze Mei Street
290	LUNG SUM AVENUE	Fanling	San Wan Road	Jockey Club Road
291	LUNG CHEUNG ROAD (CHOI HUNG)	Choi Hung	Wong Kuk Avenue	Clear Water Bay Road
			Hammer Hill Road	Wong Kuk Avenue
292	LUNG CHEUNG ROAD (DIAMOND HILL)	Diamond Hill	Po Kong Village Road	Hammer Hill Road
293	LUNG CHEUNG ROAD (WANG TAU HOM)	Wang Tau Hom	Fung Mo Street	Chuk Yuen Road
294	LUNG CHEUNG ROAD (WONG TAI SIN)	Wong Tai Sin	Fung Mo Street	Po Kong Village Road
295	LUNG CHEUNG ROAD FO<K41A>	Kowloon Bay	Kwun Tong Road	Lung Cheung Rd
296	LUNG CHEUNG ROAD FO<K79>	Wong Tai Sin	Hammar Hill Road RA	Choi Hung Road
297	LUNG CHEUNG ROAD SLIP ROAD	Cheung Sha Wan	Lung Cheung Road	Tai Po Road
298	LUNG WAH STREET	Kennedy Town	Ambulance Depot	Kwun Loong Lau
299	LYNDHURST TERRACE	Central	Hollywood Road	Wellington Street
300	MA CHAI HANG ROAD	Wong Tai Sin	Chuk Yuen Road	Wong Tai Sin Road
301 (S)	MA MIU ROAD	Yuen Long	Ma Wang Road	Castle Peak Road (Yuen Long)
302	MA ON SHAN ROAD	Ma On Shan	Kam Ying Road	Sai Sha Road
(B) - section "**"			off Heng On Estate & Yiu On Estate*	-
303 (S)	MA SIK ROAD	Fanling	On Kiu Street	Fan Leng Lau Road (Eastbound)

Legend: (B) = technically feasible to retrofit with noise barriers/enclosures

(S) = possible candidate for resurfacing with low noise surfacing material

FO<xx> = Flyover no. xx

Reference Number	Road	Location	From	To
			Tin Ping Road	Jockey Club Road
			Fan Leng Lau Road	Tin Ping Road
304	MA TAU CHUNG ROAD	Ma Tau Wai	Hang Wan Road	Ma Tau Kok Road
305	MA TAU CHUNG ROAD & FO<K11C>	Ma Tau Wai	Sung Wong Toi Garden	Kowloon City INT
306 (S)	MA TAU KOK ROAD	Ma Tau Wai	Shing Tak Street	Kowloon City Road
307	MA TAU PA ROAD	Tsuen wan	Texaco Road	Yeung Uk Road
308	MA TAU WAI ROAD	Ma Tau Wai	Ma Tau Chung Road (Ruby Theatre Building)	Chi Kiang Street
			Kai Ming Street	Wuhu Street
309	MA TAU WAI ROAD & MA TAU CHUNG ROAD	Ma Tau Wai	Farm Rd	Ma Tau Kok Rd
310	MA TAU WAI ROAD & TO KWA WAN ROAD	Ma Tau Wai	San Lau St & Bailey St	Chi Kiang Street
311	MAGAZINE GAP ROAD	Mid-Levels	May Road	Magazine Height
			Bowen Road	May Road
			Garden Road	Bowen Road
312	MAN FUK ROAD	Mongkok	Pui Ching Road	Man Wan Road
313	MAN YUE STEET	Hung Hom	Ma Tau Wai Road	Hung Hom Road
314	MARSH ROAD	Wanchai	Gloucester Road	Hennessy Road
315	MARSH ROAD & FO<H78>	Wanchai	Hung Hing Road	Lockhart Road
316	MEI LAI ROAD & LAI WAN ROAD	Mei Foo	Mei Fu Bus Terminus	Lai King Hill Rd
317	MEI TIN ROAD	Tai Wai	May Shing Court	Che Kung Miu Road
318	MING KUM ROAD	Tuen Mun	Tsun Wen Road	Pui To Road
319	MODY ROAD	Tsim Sha Tsui	Nathan Road	Chatham Road South
320	MOK CHEONG STREET	Ma Tau Kok	Ma Tau Chung Road	Pak Tai Street
			Pak Tai Street	To Kwan Wan Road
321 (S)	MONG KOK ROAD	Mongkok	Tong Mi Road	Sai Yee Street
322	MONG LUNG STREET	Shau Kei Wan	Aldrich Bay Road	Factory Street
323	MORRISON HILL ROAD	Wan Chai	Queen's Road East	Wan Chai Road
324	MORRISON STREET	Sheung Wan	Queen's Road C	Des Voeux Road C
325	MOUNT BUTLER ROAD	Happy Valley	Clementi Rd	Mount Butler Road No.111 Blocks G
			Clementi Road	Tai Hang Road
326	MOUNT DAVIS ROAD	Kennedy Town	Victoria Rd	Pok Fu Lam Rd
327	MUT WAH STREET	Kwun Tong	Fu Yan Street	Hip Wo Street
328 (S)	NAM CHEONG STREET	Sham Shui Po	Transport Dept Driving Exam Centre	Tung Chau Street
329	NAM FUNG ROAD	Wong Chuk Hang	Wong Chuk Hang Road	Wong Chuk Hang Path
330	NAM ON LANE	Shau Kei Wan	Nam On Street	Shau Kei Wan Road
331 (S)	NAM WAN ROAD	Tai Po	Ting Kok Road	Tai Po Tai Wo Road
			Shan Tong Road	Tat Wan Road
332	NASSAU STREET	Lai Chi Kok	Lai Wan Road	Mei Lai Road
333	NATHAN ROAD	Tsim Sha Tsui	Boundary Street	Salisbury Road
334	NELSON STREET	Mongkok	Yim Po Fong Street	Ferry Street
335	NEW CLEAR WATER BAY ROAD	Choi Hung	Clear Water Bay Road	San Lee Street
336 (S)	NGA TSIN WAI ROAD	Prince Edward	La Salla Road	Prince Edward Road East
337	NGA TSIN WAI ROAD & KAI TAK ROAD	Kowloon City	Tak Ku Ling Rd	Lok Sin Rd

Legend: (B) = technically feasible to retrofit with noise barriers/enclosures

(S) = possible candidate for resurfacing with low noise surfacing material

FO<xx> = Flyover no. xx

Reference Number	Road	Location	From	To
338	NGAN SHING STREET	Shatin	Siu Lek Yuen Road	Tak Yi Street
			Tak Yi Street	Chap Wai Kon Street
339	NGAU TAU KOK FIFTH STREET	Ngau Tau Kok	Ngau Tau Kok Fourth Street	Kwun Tong Road
340 (S)	NGAU TAU KOK ROAD	Ngau Tau Kok	Ting On Street	Luen On Street
			Choi Wan Road	Jordan Valley Road
			Jordan Valley Road	On Wah Street
341	NGAU TAU KOK ROAD & FO	Ngau Tau Kok	Kwun Tong Rd	Ngau Tau Kok Fouth St
342	NORTH POINT ROAD	North Point	Chun Yeung Street	King's Road
			Wharf Road	Chun Yeung Street
343 (S)	OAK STREET	Tai Kok Tsui	Fuk Tsun Street	Cherry Street
344	OBSERVATORY ROAD	Tsim Sha Tsui	Chathan Road	Royal Observatory
345	OLYMPIC AVENUE	Tai Kok Tsui	Sung Wong Toi Road	Concorde Road
346	ON CHEUNG ROAD	Tai Po	Tai Po Road (Tai Wo)	Chung Nga Road
347	ON CHIU STREET	Ma On Shan	On Chun Street	Sai Sha Road
348	ON CHUN STREET	Ma On Shan	around Bayshore Towers	around Bayshore Towers
349	ON KUI STREET	Fanling	Sha Tau Kok Road (Lung Yeuk Tau)	Lok Yip Road
350	PAK HOK TING STREET	Shatin	Sha Tin Centre Street	Sha Tin Centre Street
351	PAK TAI STREET	Ma Tau Wai	Ma Hang Chung Road	Sung Wong Toi Road
352	PARK ROAD & ROBINSON ROAD	Mid-Levels	Bonham Rd	Castle Rd
353	PATERSON STREET	Causeway Bay	Great George Street	Gloucester Road
354	PAU CHUNG STREET	To Kwa Wan	Lok Shan Road	Ma Tau Kok Road
355	PEAK ROAD	Mid-Levels	Plunkett's Road	Stubbs Road
356	PEKING ROAD	Tsim Sha Tsui	Nathan Road	Canton Road
357	PEONY ROAD & BEGONIA ROAD NEAR TAT CHEE AVE	Kowloon Tong	Tat Chee Ave	Tat Chee Ave
358	PERCIVAL STREET	Happy Valley	Gloucester Road	Leighton Road
359	PIK FUNG ROAD	Fanling	San Wan Road	Jockey Club Road
360	PIK WAN ROAD	Lam Tin	Lin Tak Road	Ko Chu Road
361	PINEHILL ROAD & HILLWOOD ROAD	Tsim Sha Tsui	Nathan Rd	Austin Rd
362	PING HA ROAD	Ping Shan	Castle Peak Road	Tin Yiu Road
363	PING HA ROAD & LAU FAU SHAN ROAD	Ping Shan	Tin Ha Rd	Deep Bay Rd
364	PING TIN STREET	Lam Tin	Kai Tin Road	On Tin Street
365	PITT STREET	Mongkok	Waterloo Road	Ferry Street
366	PO FUNG ROAD	Tseung Kwan O	Po Hong Road	Po Lam Road
367	PO HEUNG STREET	Tai Po	On Cheung Road	Pan Chung Road
368 (S)	PO HONG ROAD	Tseung Kwan O	Wing Lai Road	Po Lam Road North
			Po Lam Road North	Wan Lung Road
369	PO LAM ROAD	Tseung Kwan O	Anderson Road (East End)	above TKO Tunnel
			Po Lam Road South	Po Hong Road
370 (B)	PO LAM ROAD NORTH	Tseung Kwan O	Po Hong Road	Po Shun Road
371 (B)	PO NING ROAD	Tseung Kwan O	Po Lam Road North	Chiu Shun Road
372	PO SHEK WU ROAD	Sheung Shui	Po Wan Road	Fanling Highway
			Jockey Club Road	Choi Yuen Road
373	PO WAN ROAD	Sheung Shui	San Po Street	San Fung Avenue

Legend: (B) = technically feasible to retrofit with noise barriers/enclosures

(S) = possible candidate for resurfacing with low noise surfacing material

FO<xx> = Flyover no. xx

Reference Number	Road	Location	From	To
374	PO KONG VILLAGE ROAD	Diamond Hill	Choi Hung Road	Lung Cheung Road
375	PO KONG VILLAGE ROAD & HAMMER HILL ROAD	Diamond Hill	Fung Shing Street	King Tung Street
376	PO ON ROAD	Shek Kip Mei	Lung Cheung Road	Tsz Wan Shan Road
377	PO TUNG ROAD & TAI MONG TSAI ROAD	Sai Kung	Wing Hong Street	Camp Street
378	POK FU LAM ROAD	Pok Fu Lam	Tai Mong Tsai Road	Hiram's Highway
			Queen's Road W	Bonham Road
			Bonham Road	Mount Davis Road
			Queen Mary Hospital	Shek Pai Wan Road
379 (S)	PORTLAND STREET	Prince Edward	Bute Street	Man Ming Lane
			Boundary Street	Lai Chi Kok Road
380	POWER STREET	North Point	City Garden Road	King's Road
381	PRINCE EDWARD ROAD EAST	Kowloon City & Choi Hung	Prince Edward Road W	Choi Hung Estate
382	PRINCE EDWARD ROAD EAST & FO<K10A>	Choi Hung	Choi Hung Road	Eastern Rd FO<K9>
			The nullah	Prince Edward Rd W #456
383	PRINCE EDWARD ROAD INT<K78> SB SLIP ROAD C	Choi Hung	Kwun Tong Bypass	Kwun Tong Rd
384	PRINCE EDWARD ROAD INT<K78> SLIP ROADS A & B	Choi Hung	Prince Edward Rd	Kwun Tong Bypass
385	PRINCE EDWARD ROAD WEST	Tai Kok Tsui & Prince Edward	Tung Chau Street	Lai Chi Kok Road
			Yuen Ngai Street	La Salle Road
386	PRINCE EDWARD ROAD WEST & FO<K11A>	Prince Edward & Kowloon City	Prince Edward Road West FO<K11A> eastern tip	La Salle Road
387	PRINCE EDWARD ROAD WEST (GL)	Prince Edward & Mongkok	Lai Chi Kok Road	Yuen Ngai St
388	PRINCESS MARGARET HOSPITAL INT RAMP A & B	Kwai Chung	Kwai Chung Rd	Lai King Hill Rd INT
389	PRINCESS MARGARET HOSPITAL INT RAMP E & F	Kwai Chung	Kwai Chung Rd	Lai King Hill Rd INT
390	PRINCESS MARGARET ROAD	Ho Man Tin	Chatham Road South	Wylie Road
			Wylie Road	Perth Street
391	PRINCESS MARGARET ROAD & FO<K12>	Mongkok	Pui Ching Road <K14>	Argyle Street
392 (S)	PUBLIC SQUARE STREET	Yau Ma Tei	Nathan Street	Ferry Street
393	PUI CHING ROAD & SHEUNG HING STREET	Mongkok	Sheung Shing St	Waterloo Rd
394 (S)	PUI TO ROAD	Tuen Mun	Tsun Wen Road	Tsing Wun Road
395	PUI TO ROAD FO<N503> OVER TUEN MUN ROAD	Tuen Mun	Castle Peak Road - San Hui	Kai Fat Path
396 (S)	QUEEN'S ROAD EAST	Wanchai	Queensway Road	Wong Lai Chung Road
397	QUEEN'S ROAD WEST	Sai Yung Poon to Kennedy Town	Hill Road	Wilmer Street
(S) - 2 sections			Kennedy Town Praya	Hill Road
398	QUEENSWAY	Admiralty	Cotton Tree Drive	Johnston Road
399 (S)	RECLAMATION STREET	Mongkok	Mong Kok Road	Nanking Street
400	RENFREW ROAD	Kowloon Tong	Junction Road	Hereford Road
401	REPLUSE BAY ROAD	Repulse Bay	Island Road	South Bay Road
			Deep Water Bay Road	Island Road

Legend: (B) = technically feasible to retrofit with noise barriers/enclosures

(S) = possible candidate for resurfacing with low noise surfacing material

FO<xx> = Flyover no. xx

Reference Number	Road	Location	From	To
402	REPULSE BAY ROAD & STANLEY GAP ROAD	Repulse Bay & Stanley	South Bay Road	Villa Corniche
403	ROBINSON ROAD	Mid-Levels	Ma Hang Prison	Stanley Village Road
404	ROUTE TWISK	Tai Mo Shan	Magazine Gap Road	Kotewall Road
405	RUSSELL STREET	Causeway Bay	Tsuen Kam INT	Tso Kung Tam
406	SAI SHA ROAD (MA ON SHAN)	Causeway Bay	Canal Road East	Percival Street
407	SAI SHA ROAD (SHAP SZE HEUNG)	Ma On Shan	Hang Hong Street	Off Lok Wo Sha
408	SAI WAN HO STREET	Shap Sze Heung	Lok Wo Sha	Hirams Highway
409	(S) SAI YEE STREET	Sai Wan Ho	Sun Shing Street	Tai Cheong Street
410	SAI YEUNG CHOI STREET NORTH	Mongkok	Boundary Street	Soy Street
411	SAI YEUNG CHOI STREET SOUTH	Mongkok & Prince Edward	Poplar Street	Playing Field Road
412	SAN MA TAU STREET	Mongkok	Prince Edward Road West	Dudas Street
413	SAN FUNG AVENUE	Ma Tau Kok	To Kwa Wan Road	Public Pier
414	SAN LAU STREET	Sheung Shui	Lung Sum Avenue	Jockey Club Road
415	SAN SHAN ROAD	Hung Hom	San Lau Street	Bailey Street
		Ma Tau Kok	Kowloon City Road	To Kwa Wan Road
			Tam Kung Road	Kowloon City Road
416	SAN TIN HIGHWAY, CASTLE PEAK ROAD & SAN TAM ROAD	San Tin	Castle Peak Road - Mei Po	San Wai Tsuen
			San Wai Tsuen	Long Ha
			Chuk Yau Road	San Tin Road Roundabout
			Long Ha	Sha Po Tsuen
417	SAN WAN ROAD	Fanling	Jockey Club Road	Sha Tau Kok Road
			Sha Tau Kok Road	So Kwun Po Interchange
			So Kwun Po Interchange	Chi Cheong Road
			Chi Cheong Road	Lung Wan Street
418	SASSON ROAD	Pok Fu Lam	Victoria Road	Pok Fu Lam Road
419	SAU FU STREET	Yuen Long	Yuen Long On Ning Road	Yuen Long Pau Cheung Square
420	SAU MAU PING ROAD	Sau Mau Ping	Sau Ming Road*	Sau Mau Path*
(B) - section ""			Sau Pau Path	Sau Mau Ping Estate - Block 25
			Sau Mau Ping Estate - Block 25	Hiu Kwong Street
			Hiu Kwong Street	TKO Road
			Shun On Road	Sau Ming Road
421	SAU MING ROAD	Sau Mau Ping	Sau Mau Ping Road	Sau Mau Ping Estate Office
			Shell LPG Tank	Hiu Kwong Street
422	SEYMOUR ROAD	Mid-Levels	Caine Road	Robinson Road
423	SHA KOK STREET	Shatin	Tai Chung Kiu Road	Sha Tin Wai Road
424	SHATIN PASS ROAD (TSZ WAN SHAN)	Tsz Wan Shan	Tsz Wan Shan Road	Fung Tak Road
425	SHA TIN CENTRE STREET	Shatin	Tam Kon Po Street	Tai Po Road - Tai Wai
426	SHA TIN ROAD	Shatin	Yuen Wo Road	Tai Po Road - Sha Tin
(B) - section ""			Lion Rock Tunnel Road	Sha Tin Wai Road
			Ngan Shing Street*	Tai Chung Kiu Road*
427	(S) SHA TIN WAI ROAD	Shatin	Sha Kok Street	Tai Chung Kiu Road
			Sha Tin Road	Sha Kok Street
			Ngan Shing Road	Sha Tin Road
			Siu Lek Yuen Road	Ngan Shing Road

Legend: (B) = technically feasible to retrofit with noise barriers/enclosures

(S) = possible candidate for resurfacing with low noise surfacing material

FO<xx> = Flyover no. xx

Reference Number	Road	Location	From	To
428	SHA TAU KOK ROAD	Kwan Tei & Ping Che	Ping Che Road	Lung Ma Road
429	SHA TAU KOK ROAD - LUNG YEUK TAU	Lung Yeuk Tau	Lok Yip Road	Jockey Club Road
			Ma Sik Road	Lok Yip Road
430	SHA TIN ROAD RAMPS	Shatin	Tai Chung Kiu Rd	Sha Tin Rd
431	SHA TIN WAI ROAD FO<UR T5> NB SLIP ROAD C	Shatin	Sha Tin Wai Rd FO<UR T5> N-B	Tate's Cairn Highway slip road A
432	SHA TSUI ROAD	Tsuen Wan	Tai Chung Road	Texaco Road
433	SHAN KWONG ROAD	Happy Valley	Wong Nai Chung Road	Shan Kwong Court
434	SHANGHAI STREET	Yau Ma Tei	Lai Chi Kok Road	Austin Road
(S) - 2 sections				
435	SHANTUNG STREET	Mongkok	Yim Po Fong Street	Ferry Street
436	SHATIN PASS ROAD (WONG TAI SIN)	Wong Tai Sin	Ching Tak Street	Choi Hung Road
437	SHATIN RURAL COMMITTEE ROAD	Shatin	Yuen Wo Road	Tai Po Road - Sha Tin
			Tai Chung Kiu Rd	Yuen Wo Road
438	SHAU KEI WAN ROAD	Shau Kei Wan	King's Road	Aldrich Street
439 (S)	SHEK KIP MEI STREET	Shek Kip Mei	Woh Chai Road	Yee Kuk Street
440	SHEK PAI ROAD	Kwai Chung	Castle Peak Road - Kwai Chung	Tai Pak Tin Street
441	SHEK O ROAD	Shek O	Tai Fung Au	Shek O Village
442	SHEK PAI WAN ROAD	Aberdeen	Tin Wan Hill Road	Aberdeen Praya Road
			Pok Fu Lam Road	Tin Wan Hill Road
443	SHEK PAI TAU ROAD	Tuen Mun	Tai Hing Street	Tsun Wen Road
444	SHEK WAI KOK ROAD	Tsuen Wan	Wai Tsuen Road	Cheung Pei Shan Road
445	SHEUNG FUNG STREET	Diamond Hill	Ming Fung Street	Wan Wah Street
446	SHEUNG SHING STREET	Ho Man Tin	Fat Kwong Street	Tin Kwong Road
447	SHEUNG YEE ROAD FO<K57>	Kowloon Bay	Ngau Tau Kok Rd	Tsui Hing St
448	SHING MUN ROAD	Tsuen Wan	Texaco Road North	Cheung Shan Estate Rd West
			Texaco Road North	Castle Peak Road (Tsuen Wan)
449	SHING WO ROAD	Happy Valley	Wong Nai Chung Road	Blue Pool Road
450	SHU KOK STREET	North Point	Java Road	King's Road
451	SHUN LEE TSUEN ROAD	Jordan Valley	San Lee Street	Shun King Street
(B) - section ""			Shun King Street	Shun On Road
			Shun On Road*	Hip Wo Street*
452	SHUN NING ROAD	Shek Kip Mei	Pratas Street	Wing Hong Street
453	SHUN ON ROAD	Jordan Valley	Shun Lee Tsuen Tsuen Road	Lee On Road
			Lee On Road	Sau Mau Ping Road
454	SHUNG YUNG STREET & PAK KUNG STREET	Hung Hom	Fat Kwong St	Chatham Rd N
455	SHUNG SHUN STRET & YAN WING STREET	Yau Tong	Ko Chiu Road	Sam Ka Tsuen Fery Pier
456	SHUNG WAH STREET & WAN WAH STREET	Diamond Hill	Sheung Fung St	Sheung Fung St
457	SING WOO ROAD	Happy Valley	Wong Nai Chung Road	Blue Pool Road
458	SIU LEK YUEN ROAD	Shatin	Tate's Cairn Highway	Kwong Sin Street
			Tai Chung Kiu Road	Chap Wai Kon Street
459	SMITHFIELD	Kennedy Town	Pokfield Road	Lung Wah Street
460	SMITHFIELD & POKFIELD ROAD	Kennedy Town	Belcher's St	Pok Fu Lam Road
461	SO KWUN PO ROAD	Fanling	So Kwun Po Road Interchange	Pak Wo Road

Legend: (B) = technically feasible to retrofit with noise barriers/enclosures

(S) = possible candidate for resurfacing with low noise surfacing material

FO<xx> = Flyover no. xx

Reference Number	Road	Location	From	To
462	SOY STREET	Mongkok	Jockey Club Road Yim Po Fong Street Portland Street	So Kwun Po Rd Interchange Sai Yeung Choi Street South Tak Cheong Street
463	STANLEY VILLAGE ROAD	Stanley	Stanley Gap Road	Carmel Road
464	STEWART ROAD	Wan Chai	Gloucester Road	Hennessy Road
465	STUBBS ROAD	Wan Chai & Mid-Levels	Queen's Road East Wong Nai Chung Gap Road	Tung Shan Terrace Wan Chai Gap Road
466	STUBBS ROAD FO<H119>	Mid-Levels	Stubbs Road	Wong Nai Chung Gap Road
467	SUFFOLK ROAD & KENT ROAD	Kowloon Tong	Waterloo Rd	Cornwall St
468	SUI WO ROAD	Shatin	Scenary Garden Ha Wo Che Service Reservoirs Greenwood Terrace Ville de Jardine	Sui Wo Court Scenery Garden Ha Wo Che Service Reservoirs Greenwood Terrace
469	SUN TIN WAI EST ACCESS ROAD	Shatin	Sha Tin Tau Rd	Sha Tin Tau Rd
470	SUNG WONG TOI ROAD	Kowloon City	Ma Tau Chung Rd	Kowloon City Road (Westbound)
471	SUNG WONG TOI ROAD & TO KWA WAN ROAD	Kowloon City	Airport Tunnel	Mok Cheong St
472	SYCAMORE STREET	Tai Kok Tsui	Tai Kok Tsui Road	Prince Edward Road West
473 (B) - section "" (S)	TAI CHUNG KIU ROAD	Shatin	On Muk Street Sha Tin Wai Road off Jat Min Cheun & Yue Shing Court*	Shek Mun Interchange Siu Lek Yuen Road -
474	TAI CHUNG KIU ROAD FO	Shatin	Siu Lek Yuen Road	On Muk Road
475	TAI CHING STREET	Tai Kok Tsui	Tai Tsun Street	Ivy Street
476	TAI FONG STREET	Tuen Mun	Leung Choi Lane	Tsun Wen Road
477	TAI HANG ROAD	Tai Hang	Tai Hang Drive Grandview Mansion Wong Nai Chung Gap Road Blue Pool Road	Grandview Mansion Tung Lo Wan Rd Blue Pool Road Tai Hang Drive
478	TAI HANG ROAD FO<H134>	Tai Hang	Gloucester Rd	St. John Ambulance Brigade Headquarters
479 (S)	TAI HANG TUNG ROAD	Shek Kip Mei	Nam Shan Chuen Road	north end of Tong Yam Street
480	TAI HO ROAD	Tsuen Wan	Tsuen Wan Transport Complex	Castle Peak Road (Tsuen Wan)
481	TAI HO ROAD & FO<N484>	Tsuen Wan	Hoi Pa Street	Castle Peak Road - Tsuen Wan
482	TAI HO ROAD NORTH	Tsuen Wan	Tsuen Wan Market St	Tseun Kam INT
483	TAI HONG STREET	Sai Wan Ho	Hong Cheung Street Hong Cheung Street	Shau Kei Wan Road Kwun Hoi Mansion
484	TAI KIU ROAD	Yuen Long	Yuen Long On Lok Road	Yuen Long On Ning Road
485	TAI KOK TSUI FO<K54> DOWN-RAMP	Tai Kok Tsui	Yen Chow St	Sham Shui Po Ferry Concourse
486	TAI KOK TSUI ROAD	Tai Kok Tsui	Tung Chau Street	Cherry Street
487	TAI LOONG STREET	Kwai Chung	Wo Yi Hop Road	Wo Yi Hop Road
488	TAI NAM STREET	Sham Shui Po & Prince Edward	Yen Chow Street	Prince Edward Road West
489	TAI ON STREET	Shau Kei Wan	Eastern Law Court Building	Shau Kei Wan Road
490	TAI PO ROAD - MA LIU SHUI	Ma Liu Shui	Sha Tin Race Course	Lai Ping Road

Legend: (B) = technically feasible to retrofit with noise barriers/enclosures

(S) = possible candidate for resurfacing with low noise surfacing material

FO<xx> = Flyover no. xx

Reference Number	Road	Location	From	To
491	TAI PO ROAD - SHA TIN	Shatin	Tung Lo Wan	Sha Tin Race Course
492	TAI PO ROAD - SHA TIN HEIGHTS	Tai Wai	Keng Hau Road	West of Sha Tin Water Treatment Works
493	TAI PO ROAD - SHA TIN HEIGHTS & TAI WAI	Tai Wai	Keng Hau Road	Tung Lo Wan
494	TAI PO ROAD - TAI WO	Tai Wo	Tai Po Tai Wo Road	Tai Po Tau Water Pumping Station
495	TAI PO ROAD - YUEN CHAU TSAI	Tai Po	Nam Wan Road	Tai Po Road
496	TAI PO ROAD - YUEN CHAU TSAI EB	Tai Po	Kwong Wang St	Ramp to Tai Po Rd - Yuen Chau Tsai
497	TAI PO ROAD (Sham Shui Po)	Sham Shui Po	Cheung Sha Wan Road	Kowloon Road
(B) - section "***"			Kowloon Road*	Tai Wo Ping INT*
498	TAI PO TAI WO ROAD	Tai Po	Ting Kok Road	Yuen Shin Road
(S) - 2 sections			Ting Tai Road	Ting Kok Road
			Tolo Highway	Ting Tai Road
499	TAI SHING STREET	Kowloon city	Tung Tau Tsuen Road	Choi Hung Road
500	TAI TAM ROAD	Tai Tam	Access Road to Service Reservoir	Chai Wan Road
			Stanley Gap Road	Tai Tam Tuk Reservoir
501	TAI TONG ROAD	Yuen Long	Castle Peak Road (Yuen Long)	Ma Tong Road
			Ma Tong Road	Tai Tong Tsuen
502	TAI WO HAU ROAD	Tsuen Wan	Texaco Road	Shek Tau Street
			Sheung Kok Street (western junction)	Hang Ping Street
			Hang Ping Street	Hing Fong Road
503	TAI WO SERVICE ROAD WEST	Wo Hap Shek	Yuen Leng	Wo Hing Road
			Lam Kam Road	Yuen Leng
504	TAI WOH PING ROAD	Tai Wo Ping	Tai Po Road	Nam Cheong Street
505	TAI YUE AVENUE & TAIKOO WAN ROAD	Taikoo Shing	Tai Koo Shing Rd	Island Eastern Corridor slip road
506	TAIKOO SHING ROAD	Taikoo Shing	Tai Yue Ave	Shau Kei Wan Road
507	TAIKOO SHING ROAD & WESTLANDS ROAD	Taikoo Shing	Tai Yue Ave	King's Rd
508	TAIKOO WAN ROAD & TAI WING AVENUE	Taikoo Shing	Island Eastern Corridor access road to Taikoo Wan Rd	Taikoo Shing Rd
509	TAK KU LING ROAD	Kowloon City	Carpenter Road	Prince Edward Road East
510	TAK MAN STREET	Hung Hom	Dock Street	Hung Hom Road
511	TAK ON STREET	Hung Hom	Wan Hoi Street	Hung Hom Road
512	TAK TIN STREET	Lam Tin	Kai Tin Road	On Tin Street
513	TAM KON PO STREET	Shatin	Yuen Wo Road	Sha Tin Centre Street
514	TAT CHEE AVENUE	Kowloon Tong	Fa Po Street	Tai Hang Tung Road
			Cornwall Street	Fa Po Street
515	TAT WAN ROAD	Tai Po	Tai Po Market Station	Elegance Garden
			Elegance Garden	Lam Tsuen River
516	TEXACO ROAD	Tsuen Wan	Castle Peak Road - Tsuen Wan	Yeung Uk Road
517	TEXACO ROAD FO	Tsuen Wan	Tak Tai Path	Tsuen Tsing INT
518	TEXACO ROAD NORTH	Tsuen Wan	Tsuen Kam INT	Castle Peak Road - Tsuen Wan
519	THIRD STREET & WATER STREET	Sai Ying Pun	Pok Fu Lam Rd	Queen's Rd W
520	TIN PING ROAD	Sheung Shui	Ma Sik Road	Lung Sum Avenue
			Lung Sum Avenue	Jockey Club Road
521	TIN CHIU STREET	North Point	East Embankment	King's Road

Legend: (B) = technically feasible to retrofit with noise barriers/enclosures

(S) = possible candidate for resurfacing with low noise surfacing material

FO<xx> = Flyover no. xx

Reference Number	Road	Location	From	To
522	TIN HA ROAD	Hung Shui Kiu	Ping Ha Road	Castle Peak Road (Hung Shui Kiu)
523	TIN HAU TEMPLE ROAD	North Point	N.P. Service Reservoir Playground	Kingsford Garden
			Fortress Hill Road	Man Kiu College
			Belilios Pub School	Fortress Hill Road
			King's Road	Belilios Pub School
			Pui Kiu College	Kingsford Garden
524	TIN KWONG ROAD	Ma Tau Wai	Argyle Street	Ma Tau Wai Road
525	TIN LOK LANE	Caueway Bay	Wan Chai Road	Hennessy Road
526 (B)	TIN SAM STREET	Tai Wai	Che Kung Miu Road	Hung Mui Kuk Road
527	TING KOK ROAD	Tai Po	Tai Po Road Tai Wo Road	Ting Tai Road
			Ting Lai Road	Nam Wan Road
			Nam Wan Road	Yuen Shin Road
			Yuen Shin Road	Dai Kwai Street
			Dai Kwai Street	Tai Mei Tuk
528	TING TAI ROAD	Tai Po	Tai Po Tau Road	Ting Kok Road
			Tai Po Road (Tai Wo)	Tai Po Tau Road
529	TO KWA WAN ROAD	To Kwa Wan	San Ma Tau Street	Sung Wong Toi Road
(S) - 2 sections			Ma Tau Wai Road	San Ma Tau Street
530	TOLO HIGHWAY (MA LIU SHUI & TAI PO KIU)	Ma Liu Shui to Tai Po	Ma Liu Shui	Tai Po Kau
531	TOLO HIGHWAY (TAI PO & TAI WO)	Tai Po & Tai Wo	Wang Fuk Court	Shan Tong Road
			Shan Tong Road	Tat Wan Road
			Tat Wan Road	Ma Wo
			Ma Wo	Shek Kwu Lung
			Shek Kwu Lung	Lam Kam Road Interchange
532	TOLO HIGHWAY INT RAMP G	Tai Po	Tolo Highway INT ramp A	Kwong Wang St
533	TOLO HIGHWAY INT SLIP ROAD	Tai Po	Slip roads to & from Tolo Highway	Slip roads to & from Tai Po Rd- Yuen Chau Tsai
534	TONG CHONG STREET	Quarry Bay	King's Road	Hoi Wan Street
535	TONG MI ROAD	Tai Kok Tsui	Lai Chi Kok Road	Arran Street
			Arran Street	Argyle Street
536	TONG SHUI ROAD	North Point	Marble Road	King's Road
537	TONG SHUI ROAD & FO<H127>	North Point	Island Eastern Corridor	Chun Yeung St
538	TONG SHUI ROAD (GL)	North Point	West Embankment	Java Rd
539 (S)	TONKIN STREET	Sham Shui Po	Kwong Lee Road	Tung Chau Street
540	TONKIN STREET & KWONG LEE ROAD	Sham Shui Po	Castle Peak Rd	Cheung Fat St
541	TONNOCHY ROAD	Wanchai	Gloucester Road	Hennessy Road
542	TONNOCHY ROAD FO<H171>	Wanchai	Tonnochy Road	Gloucester Road
543	TSAT TSZ MUI ROAD	Quarry Bay	Healthy Street West	Tin Chiu Street
			Healthy Street Central	Healthy Street West
			Healthy Street East	Healthy Street Central
544	TSENG CHOI STREET	Tuen Mun	around Castle Peak Road (San Hui)	around Castle Peak Road (San Hui)
545	TSEUK LUK STREET	Kowloon City	Choi Hung Road	King Fuk Street
546 (B)	TSEUNG KWAN O ROAD	Lam Tin	Tsui Ping Estate Saurth	Lin Tak Road
547 (B)	TSEUNG KWAN O ROAD FO<K56>	Lam Tin	Lei Yue Mun Road	Tsui Ping Estate Saurth

Legend: (B) = technically feasible to retrofit with noise barriers/enclosures

(S) = possible candidate for resurfacing with low noise surfacing material

FO<xx> = Flyover no. xx

Reference Number	Road	Location	From	To
548	TSING CHUNG KOON ROAD	Tuen Mun	San Fuk Road	Tai Fong Street
549	TSING FUNG STREET FO<H74>	Fortress Hill	King's Road	Victoria Park Road
550	TSING KING ROAD	Tsing Yi	Tsing Tsuen Road	Fung Shue Wo Road
			Tam Kon Shan Interchnage	Tsing Tsuen Road
551	TSING LUN ROAD	Tuen Mun	Tsun Wen Road	Hong Po Road
552	TSING TIN ROAD	Tuen Mun	Ming Kum Road	Tsun Wen Road
553	TSING TIN ROAD INT	Tuen Mun	Tsun Wen Road	Tuen Mun Road
554 (B)	TSING TSUEN BRIDGE	Kwai Chung & Tsing Yi	Riviera Gardens	Cheung On Estate
555	TSING YI HEUNG SZE WUI ROAD	Tsing Yi	Fung Shue Wo Road	Tsing Yi Bridge
556	TSING YI ROAD	Tsing Yi	Sai Shan Road	Tsing Yi Bridge
557	TSUEK LUK STREET	San Po Kong	King Fuk Street	Choi Hung Road
558	TSUEN KING CIRCUIT	Tsuen Wan	Yan Chai Hospital Lim Por Yen Secondary School	Tsuen Tak Gardens
			Castle Peak Road (Tsuen Wan)	Chai Wan Kok Catholic Primary School
559	TSUEN NAM ROAD, CHIK FUK STREET & SHING HO ROAD	Tai Wai	Tai Po Rd-Tai Wai	Tai Wai Rd
560	TSUEN WAN ROAD	Tsuen Wan	Texaco Road (slip road)	Clague Garden Estate
561	TSUEN WAN ROAD FO<N522> OVER KWAI TSING INT	Kwai Chung	Ramp from Tsuen Wan Road	Ramp to Tsuen Wan Road
562	TSUEN WAN ROAD NB RAMP	Tsuen Wan	Kwai Chung Rd	Tsuen Wan Rd
563	TSUEN WAN ROAD SB RAMP	Tsuen Wan	Tsuen Wan Rd	Kwai Chung Rd
564	TSUI LAM ROAD	Tseung Kwan O	TKO Tunnel	Po Lam Road North
565	TSUI PING ROAD	Kwun Tong	Kai Lim Road	Kwun Tong Road
			Hip Wo Street	Kai Lim Road
566	TSUN WEN ROAD	Tuen Mun	Ming Kum Road	Pui To Road
567	TSZ WAN SHAN ROAD	Tsz Wan Shan	Shatin Pass Road	Yuk Wah Street
568	TUEN FAT ROAD	Tuen Mun	Tuen Yan Street	Tuen Lee Street
569	TUEN HING ROAD	Tuen Mun	Tuen Mun Road	Castle Peak Road
570	TUEN HING ROAD FO<N432> OVER TUEN MUN ROAD	Tuen Mun	New Town Mansion	Tuen Mun Government Office
571 (S)	TUEN MUN HEUNG SZE WUI ROAD	Tuen Mun	San Hui Path	Hoi Wing Road
572	TUEN MUN ROAD - SIU LAM INT SLIP ROADS	Siu Lam	Tuen Mun Rd	Castle Peak Rd
573 (B)	TUEN MUN ROAD (SHAM TSENG TO SIU	Sham Tseng to Siu Lam	Sea Crest Villa Phase II	Ka Loon Tsuen
574 (B)	TUEN MUN ROAD (SIU LAM TO TUEN MUN)	Siu Lam to Tuen Mun	Tai Lam Kok (Brother's Point)	Harvest Garden
575	TUEN MUN ROAD (TING KAU BRIDGE - SHAM TSENG)	Ting Kau	Rhine Terrace	Sea Crest Villa Phase II
576 (B)	TUEN MUN ROAD (TSUEN WAN - TING KAU BRIDGE)	Tsuen Wan to Ting Kau	Chai Wan Kok	Ting Kau
577	TUEN MUN ROAD (TUEN MUN)	Tuen Mun	Harvest Garden	Tsing Tin Road
578	TUEN MUN ROAD RAMPS A & B	Tuen Mun	Wong Chu Rd	Tuen Mun Rd
579	TUNG LO WAN ROAD	Tai Hang	Leighton Road	Tung Lo Wan Road
580	TUNG LO WAN ROAD & TAI HANG ROAD	Tai Hang	Causeway Rd	Ka Ning Path
581	TUNG TAU TSUEN ROAD	Kowloon City	Tung Tsing Road	Shatin Pass Road
			Junction Road	Tung Tsing Road

Legend: (B) = technically feasible to retrofit with noise barriers/enclosures

(S) = possible candidate for resurfacing with low noise surfacing material

FO<xx> = Flyover no. xx

Reference Number	Road	Location	From	To
582	TUNG TSING ROAD	Kowloon City	Tung Tau Tsuen Road	Lok Sin Road
583	TUNG YAN STREET	Kwun Tong	Hip Wo Street	Kwun Tong Road
584 (S) - 2 sections	UN CHAU STREET	Sham Shui Po	Castle Peak Road	Shek Kip Mei Street
585	UPPER ALBERT ROAD	Mid-Levels	Lower Albert Road	Garden Road
			Albany Road	Garden Road
586	VICTORIA PARK ROAD	Causeway Bay	Percival Street	Victoria Park
587	VICTORIA PARK ROAD (GL)	Causeway Bay	Island Eastern Corridor	Hing Fat St
588	VICTORIA PARK ROAD ENTRY-RAMP WB	Causeway Bay	Hing Fat St	Victoria Park Rd W-B
589	VICTORIA ROAD	Pok Fu Lam	Pok Fu Lam Road	Pok Fu Lam Fire Service Officer Married Quarters
			Northcote College of Education	Consort Rise
			Sandy Bay Road	Cadogan Street
			off Baguio Villa	-
590	VILLAGE ROAD	Happy Valley	Sing Woo Road	Shan Kwong Road northern end
591	WAH FU ROAD	Aberdeen	Wah Chun House	Shek Pat Wan Road
			Pui Ying Secondary School	Wah Chun House
592	WAH YIU ROAD	Kwai Chung	Lai Chi Ling Road	Lai Yiu Estate - Wah Yiu House
			Wa Tai Road	Lai Chi Ling Road
593	WAI TSUEN ROAD	Tsuen Wan	Shek Wai Kok Road	Sai Lau Kok Road
			Tsuen Kam Interchange	Shek Wai Kok Road
594	WAI YIP STREET	Kowloon Bay	Kai Cheung Road	Sheung Yee Road
595	WAN CHAI ROAD	Wanchai	Johnston Road	Morrison Hill Road
			Queen's Road East	Johnston Road
			Johnston Rd	Bowrington Road
596	WAN TAU STREET	Tai Po	Kwong Fuk Road	Nam Shing Street
597	WAN WAH STREET	Diamond Hill	Tsz Wan Shan Road	Po Tsz Lane
598	WANG LOK STREET	Yuen Long	Fuk Hi Street	Wang Tat Road
			Daido Building Materials Ltd	Fuk Hi Street
599	WANG CHAU ROAD	Yuen Long	Yuen Long On Ning Road	Yuen Long On Lok Road
600	WANG CHIU ROAD	Kowloon Bay	Kai Cheung Rd	Wang Kong Road
601	WANG KWONG ROAD	Kowloon Bay	Kai Cheung Rd	Wang Chiu Road
602	WANG TAK ROAD, MA WANG ROAD, LONG YIP ROAD & YUEN LONG ON LOK ROADS	Yuen Long	Wang Lok St	Ma Miu Rd
603 (B)	WANG TAT ROAD & MA WANG RD	Yuen Long	Ma Mui Road	Shui Pin Wai Road
604	WANG TAU HOM EAST ROAD	Wang Tau Hom	Wang Tau Hom North Road	Junction Road
605	WATER STREET	Sai Ying Pun	Third Street	Queen's Road West
606 (S)	WATERLOO ROAD	Kowloon Tong & Mongkok	Ferry Street	Fessenden Road
607	WATERLOO ROAD FO	Kowloon Tong	Lion Rock Tunnel	Fessenden Road
608	WATERLOO ROAD & FO<K12 & K44>	Kowloon Tong	Argyle Street	Prince Edward Rd W
609	WATERLOO ROAD & FO<K44>	Kowloon Tong	Flint Road	Boundary St
610	WATERLOO ROAD (GL)	Kowloon Tong	Ede Rd	Suffolk Rd
611	WATERLOO ROAD FO<K44>	Kowloon Tong	Boundary Street	Prince Edward Road West
612	WATERLOO ROAD FO<K59>	Kowloon Tong	Suffolk Rd	Ede Road

Legend: (B) = technically feasible to retrofit with noise barriers/enclosures

(S) = possible candidate for resurfacing with low noise surfacing material

FO<xx> = Flyover no. xx

Reference Number	Road	Location	From	To
613	WELLINGTON STREET	Central	Wyndham Street	Queen's Road Central
614	WESTERN KOWLOON CORRIDOR (ALONG TAI KOK TSUI ROAD)	Tai Kok Tsui	Tai Kok Tsui Road	Cherry Street
615	WESTERN KOWLOON CORRIDOR (ALONG TONG MEI ROAD)	Tai Kok Tsui	Tung Chau Street	Argyle Street
616 (B)	WESTERN KOWLOON CORRIDOR (ALONG TUNG CHAU STREET)	Cheung Sha Wan	Tonkin Street	Willow Street
617	WESTERN STREET	Sheung Wan	Des Voeux Road West	Bonham Road
618 (S)	WHITTY STREET	Shek Tong Tsui	Queen's Road West	Des Voeux Road West
619	WING HING STREET	North Point	King's Road	Hing Fat Street
620	WING LOK STREET	Sheung Wan	Des Voeux Road West	Des Voeux Road C
621	WING SHUN STREET	Tsuen Wan	Yi Hong Street	Wing Yin Street
			Ma Tau Pa Road	Yi Hong Road
622	WING TAI ROAD	Chai Wan	Ka Yip Street	Tsui Wan Street
			Ka Yip Street	Chai Wan Road
623	WINSLOW STREET & UNDERPASS	Hung Hom	Cheong Tung Road	section under Chatham Road North
624	WO CHUNG STREET	Ho Man Tin	around Fat Kwong Street Garden	around Fat Kwong Street Garden
625	WO TONG TSUI STREET	Kwai Chung	Yiu Wing Street	Kwai Chung Road
626	WO YI HOP ROAD	Kwai Chung	between Cheung Wing Road Castle Peak Ro	Castle Peak Road (Kwai Chung)
			Lei Shiu Road	Cheung Wing Road
			Wo Yi Hop Interchange	Lei Shiu Road
627	WOH CHAI STREET	Sham Shui Po	Pak Tin Street	Tai Hang Tung Road
628	WONG CHU ROAD	Tuen Mun	Hoi Wong Road	Tuen Mun Road
629	WONG CHUK HANG ROAD	Aberdeen	Shouson Hill Road	Shouson Hill Road
630	WONG CHUK STREET	Sham Shui Po	Sai Yeung Choi Street North	Lai Chi Kok Road
631	WONG NAI CHUNG GAP ROAD	Happy Valley	Leon Court	Woodland Heights
632 (S) - 2 sections	WONG NAI CHUNG ROAD	Causeway Bay	Leighton Road	Shan Kwong Road
633	WONG TAI SIN ROAD & FUNG TAK ROAD	Wong Tai Sin & Diamond Hill	Ma Chai Hang Rd	Sheung Fung St
634	WU CHUI ROAD	Tuen Mun	Lung Mun Road	Wu Shan Road
635 (S)	WU SHAN ROAD	Tuen Mun	Lung Mun Road	Wu Chui Road
636 (S)	WUHU STREET	Hung Hom	Chatham Road North	Dock Street
637	WYLIE ROAD	Mongkok	Princess Margaret Road	Wylie Path
			Waterloo Road	Princess Margaret Road
638	WYNDHAM STREET	Central	Arbuthnot Road	Queen's Road C
639	YAN KING STREET	Tseung Kwan O	Po Fung Road	Po Lam Road North
640	YAN FUNG STREET	Ho Man Tin	Chatham Road North	Fat Kwong Street
641	YEE KING ROAD & LAI TAK TSUEN ROAD	Tai Hang	Cloud View Rd	Tai Hang Rd
642	YEE KOK STREET	Sham Shui Po	Lai Chi Kok Road	Boundary Street
643	YEE WO STREET	Causeway Bay	East Point Road	Moreton Terrace
644 (S)	YEN CHOW STREET	Sham Shui Po	Kowloon Road	Tung Chau Street
645 (S)	YEUNG UK ROAD	Tsuen Wan	Tai Ho Road	Ma Tau Pa Road
646	YI SHING SQUARE	Shatin	Kong Pui Street	Greedwood Garden

Legend: (B) = technically feasible to retrofit with noise barriers/enclosures

(S) = possible candidate for resurfacing with low noise surfacing material

FO<xx> = Flyover no. xx

Reference Number	Road	Location	From	To
647 (S)	YIM PO FONG STREET	Mongkok	Argyle Street	Waterloo Road
648	YU CHOW STREET	Sham Shui Po	Yen Chow Street	Portland Street
649	YUE MAN SQUARE	Kwun Tong	Hong Ning Road	Tung Yan Street
650	YUEN LONG HONG LOK ROAD	Yuen Long	Castle Peak Road (Yuen Long)	Kau Yuk Road
651 (S)	YUEN LONG MAIN ROAD	Yuen Long	Ma Miu Rd	Yuen Long On Lok Road
652 (S)	YUEN LONG ON NING ROAD	Yuen Long	Ma Miu Road	Sai Tai Road
653	YUEN LONG TAI YUK ROAD & KAU YUK ROAD	Yuen Long	Castle Peak Rd - Yuen Long	Tai Tong Road
654 (B)	YUEN SHIN ROAD	Tai Po	Wang Fuk Court	Ting Kok Road.
655	YUEN WO ROAD	Shatin	Wo Che Street	Shatin Rural Committee Road
(B) - section "*" (S)			Fo Tan Road*	Wo Che Street*

Note:
Unless otherwise indicated, there is only one road section identified as possible candidate for resurfacing with low noise surfacing material marked with (S).

[Retroprogram\legco\noisyyroadlist]

Legend: (B) = technically feasible to retrofit with noise barriers/enclosures
(S) = possible candidate for resurfacing with low noise surfacing material
FO<xx> = Flyover no. xx

APPENDIX VI

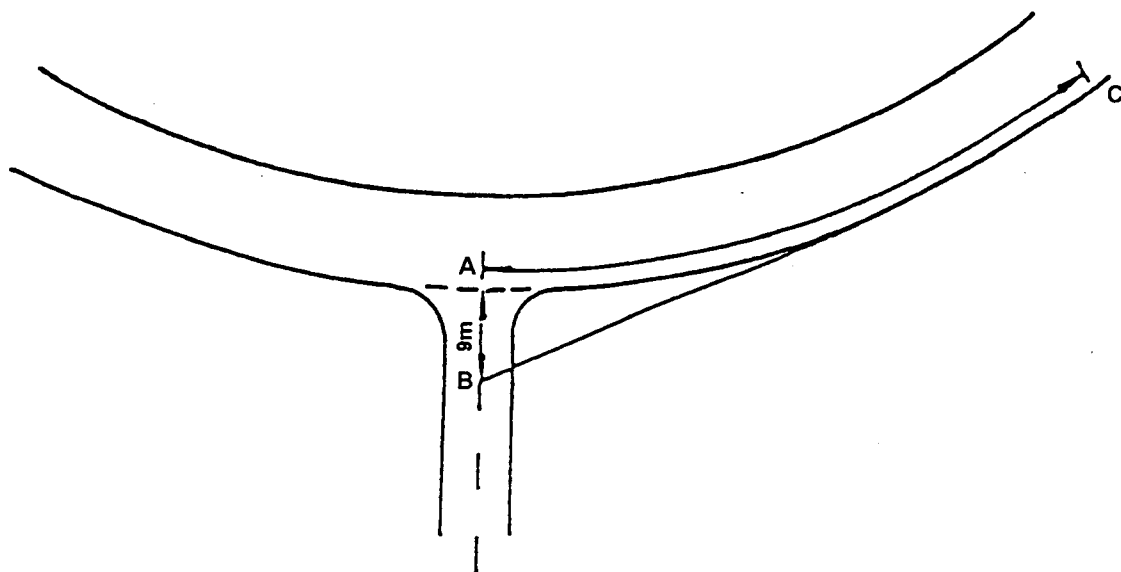
List of 29 road sections that could be retrofitted with noise mitigation measures such as barrier, semi-enclosure or enclosure

Existing Roads Considered Technically Feasible for Retrofitting with Noise Mitigation Measures

編號 No.	道路 Road	位置 Location
1	象鼻山路 Cheung Pei Shan Road	荃錦交匯處至和宜合交匯處 Tsuen Kam Interchange to Wo Yi Hop Interchange
2	將軍澳道 Tseung Kwan O Road	翠屏南邨至康華苑 Tsui Ping Estate South to Hong Wah Court
3	屯門公路(荃灣段) Tuen Mun Road (Tsuen Wan section)	近麗城花園及翠濤閣 Near Belvedere Garden & Greenview Court
4	屯門公路(三聖墟段) Tuen Mun Road (Sam Shing Hui section)	近錦暉花園 Near Kam Fai Garden
5	屯門公路(青龍頭段) Tuen Mun Road (Tsing Lung Tau section)	近豪景花園 Near Hong Kong Garden
6	青荃橋 (荃灣) (Tsuen Wan) Tsing Tsuen Bridge (青衣) (Tsing Yi)	近海濱花園 Near Riviera Gardens 近長安邨 Near Cheung On Estate
7	大涌橋路 Tai Chung Kiu Road	近乙明邨及愉城苑 Near Jat Ming Chuen & Yue Shing Court
8	寶琳北路 Po Lam Road North	寶康路至寶順路 Po Hong Road to Po Shun Road
9	車公廟路/紅梅谷路 Che Kung Miu Road/Hung Mui Kuk Road	近田心村及新翠邨 Near Tin Sam Village & Sun Chui Estate
10	馬鞍山路 Ma On Shan Road	近恆安邨及耀安邨 Near Heng On Estate & Yiu On Estate
11	車公廟路 Che Kung Miu Road	近秦石邨 Near Chun Shek Estate
12	楓樹窩路 Fung Shue Wo Road	青衣邨至青敬路迴旋處 Tsing Yi Estate to Tsing King Road Roundabout
13	沙田路 Sha Tin Road	近沙田第一城及富豪花園 Near City One Shatin & Belair Garden
14	寶寧路 Po Ning Road	近厚得邨、裕明苑及富寧花園 Near Hau Tak Estate, Yu Ming Court & Fu Ning Garden
15	順利邨道 Shun Lee Tsuen Road	近順天邨 Near Shun Tin Estate
16	觀塘繞道 Kwun Tong Bypass	近麗港城 Near Laguna City
17	田心街 Tin Sam Street	近雲疊花園及隆亨邨 Near Carado Garden & Lung Hang Estate
18	源禾路 Yuen Wo Road	近禾輦邨 Near Wo Che Estate
19	將軍澳道天橋 Tseung Kwan O Road Flyover	近翠屏南邨 Near Tsui Ping Estate South
20	西九龍走廊 West Kowloon Corridor	近南昌邨 Near Nam Cheong Estate
21	香葉道 Heung Yip Road	近黃竹坑邨 Near Wong Chuk Hang Estate
22	完善路 Yuen Shin Road	近富善邨、廣福邨及宏福苑 Near Fu Shin Estate, Kwong Fuk Estate & Wang Fuk Court
23	媽橫路 Ma Wang Road	近水邊圍邨 Near Shui Pin Wai Estate
24	秀茂坪道 Sau Mau Ping Road	近秀茂坪邨 Near Sau Mau Ping Estate
25	大埔道 Tai Po Road	樂年花園至青山道 Cronin Garden to Castle Peak Road
26	柴灣道 Chai Wan Road	近樂翠台 Near Neptune Terrace
27	青山公路(屏山段) Castle Peak Road (Ping Shan section)	近灰沙圍及屏山里 Near Fui Sha Wai & Ping Shan Lane
28	青山公路(洪水橋段) Castle Peak Road (Hung Shui Kiu section)	近柏雨花園 Near Parkview Garden
29	鴨脷洲大橋 Ap Lei Chau Bridge	近山明街 Near Shan Ming Street

APPENDIX VII

Examples of constraints



DESIGN SPEED OF MAJOR ROAD (kph)	120	100	85	70	60	50
DISTANCE AC (m)	300	225	165	125	95	70

Notes

- The visibility should be available between points 1.05m above the road level and provided by means of a visibility splay whose area is defined by lines joining the points A, B and C as shown in Diagram No. 4.3.8.1 of T.P.D.M.2.4.
- For roads within estates and other local roads of minor nature or experiencing low speeds the distance AC above relating to the 50 km/h design speed may be reduced to 50m.
- In difficult situations the dimension AB may be reduced to 4.5m and in exceptional circumstances 2m but the distance AC as recommended above should always be provided. If AB is greater than 15m high minor road approach speeds can be expected and this situation should receive special consideration. (The dimensions of lines AB and AC also govern the need for "stop" control as opposed to "give away" control).

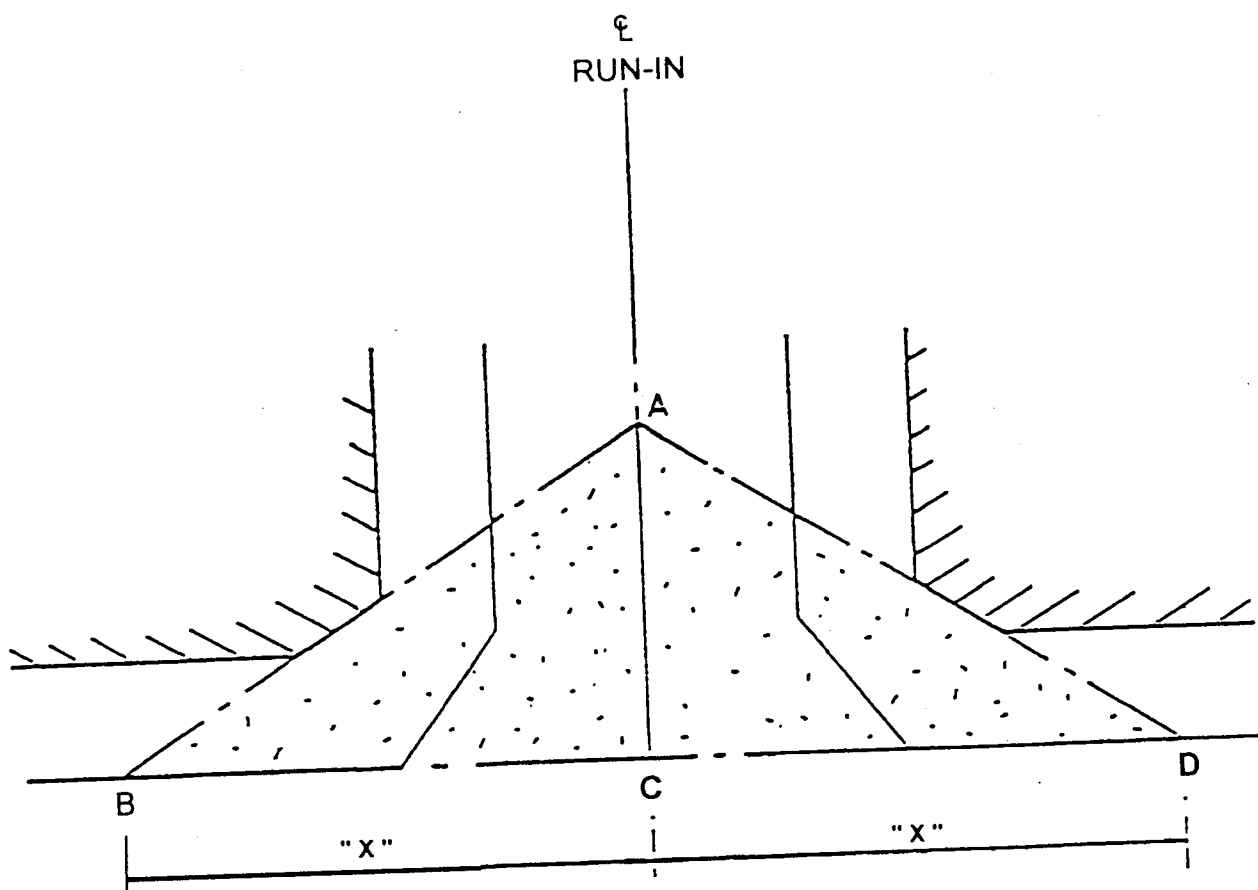
Maunsell

TITLE

Visibility Splays at Priority Junctions

MAUNSELL ENVIRONMENTAL
MANAGEMENT CONSULTANTS LTD

PROJECT NO	M15698	DATE	Dec. 1998
DESIGNED CHECKED	Wendy Tao	DRAWING NO	Figure 2.9



Notes

- (a) Visibility from a run-in should be obtainable between points 1.05m above the road and run-in level over the area described by ABCD in Diagrams 3.6.3.4 of T.P.D.M. V.2.3.
- (i) AC is a line 4.5m in length measured along the centre line of the run-in from the continuation of the nearer edge of the carriageway of the road to which the run-in has access, and
- (ii) BC and CD, are "x"m in length, and "x" is in accordance with the following table and is measured along the nearer edge of the road to which the run-in has access.

Length of Visibility Lie "x"

<u>Design Speed of Main Road (km/h)</u>	<u>x(m)</u>
80 or over	150
70	130
60	120
50	60

Maunsell

TITLE

Visibility Area at Run-ins

MAUNSELL ENVIRONMENTAL
MANAGEMENT CONSULTANTS LTD

PROJECT NO

M15698

DATE

Dec. 1998

DESIGNED/
CHECKED

Wendy Tao

DRAWING NO

Figure 2.10

- (a) Visibility distance are related to the design speed of the road as shown in the following table

Visibility Distances at Grade
Separated Interchanges

Design Speed (km/h)	Desirable Minimum (m)	Absolute Minimum (m)
120	300	225
100	225	165
85	165	125
70	125	95
60	95	70
50	70	50
40	50	40
30	40	30

M15698/table.vsd

Maunsell

TITLE

Grade Separated Interchange

MAUNSELL ENVIRONMENTAL
MANAGEMENT CONSULTANTS LTD

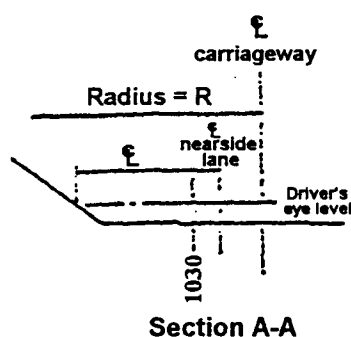
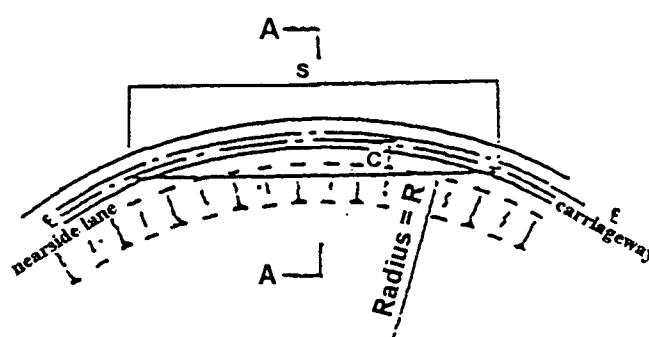
PROJECT NO	M15698	DATE	Dec. 1998
DESIGNED CHECKED	Wendy Tao	DRAWING NO	Figure 2.11

Notes

- (a) The following table shows the sight distance that should be provided on the approaches to junctions or accesses. Sight distance should be measured between a minimum drivers' eye height of 1.05m, to an object height of 1.05m, both above the centre line of each lane. It follows that junction and accesses should not be provided on sharp curves, where extensive widening of verges, cutting and bridge structures would be required to provide the required visibility. For lower speed Urban Roads, where there are little or no restrictions on pedestrians and accesses, the sight distances shown in the table should be provided throughout the road.

Sight Distance

Design Speed (km/h)	Desirable Minimum (m)	Absolute Minimum (m)
120	300	225
100	225	165
85	165	125
70	125	95
60	95	70



Maunsell

TITLE

Sight Distance

MAUNSELL ENVIRONMENTAL
MANAGEMENT CONSULTANTS LTD

PROJECT NO

M15698

DATE

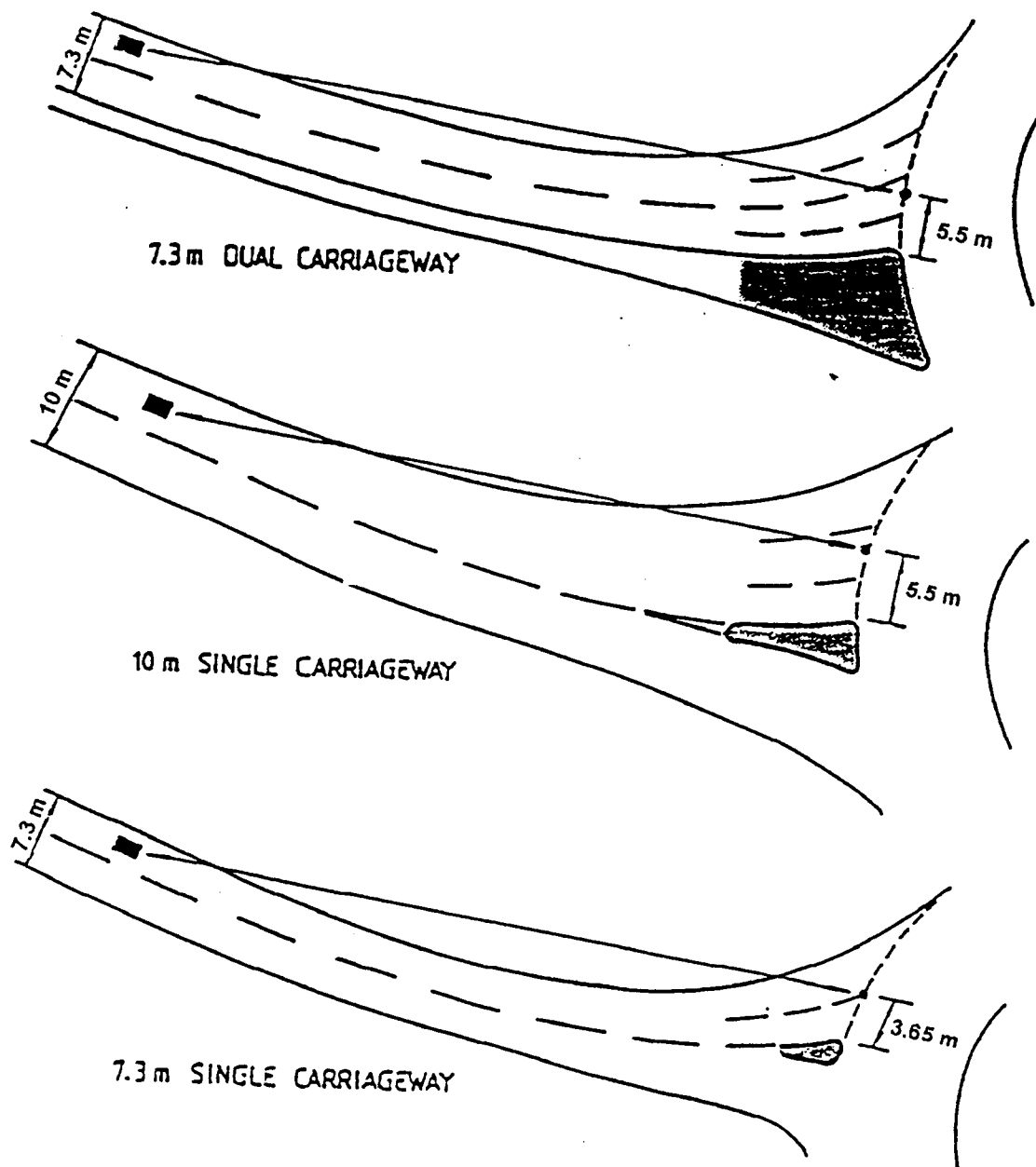
Dec. 1998

DESIGNED/
CHECKED

Wendy Tao

DRAWING NO

Figure 2.12



Notes

- Visibility distance should be measured between a driver's eye height of 1.05m and an object height of 1.05m, both measured from the centre line of each lane.
- The forward visibility at the approach to a roundabout shall not be less than that shown below. The visibility distance should be measured to the "Give Way" line as shown in Diagram 4.5.11.1 of T.P.D.M.V. 2.4.

Sight Distance

Design Speed (km/h)	100	85	70	60	50
Desirable Minimum (m)	225	165	125	95	70
Absolute Minimum (m)	165	125	95	70	50

Maunsell

TITLE

Visibility at Roundabout

MAUNSELL ENVIRONMENTAL
MANAGEMENT CONSULTANTS LTD

PROJECT NO	M15698	DATE	Dec. 1998
DESIGNED/ CHECKED	Wendy Tao	DRAWING NO	Figure 2.13