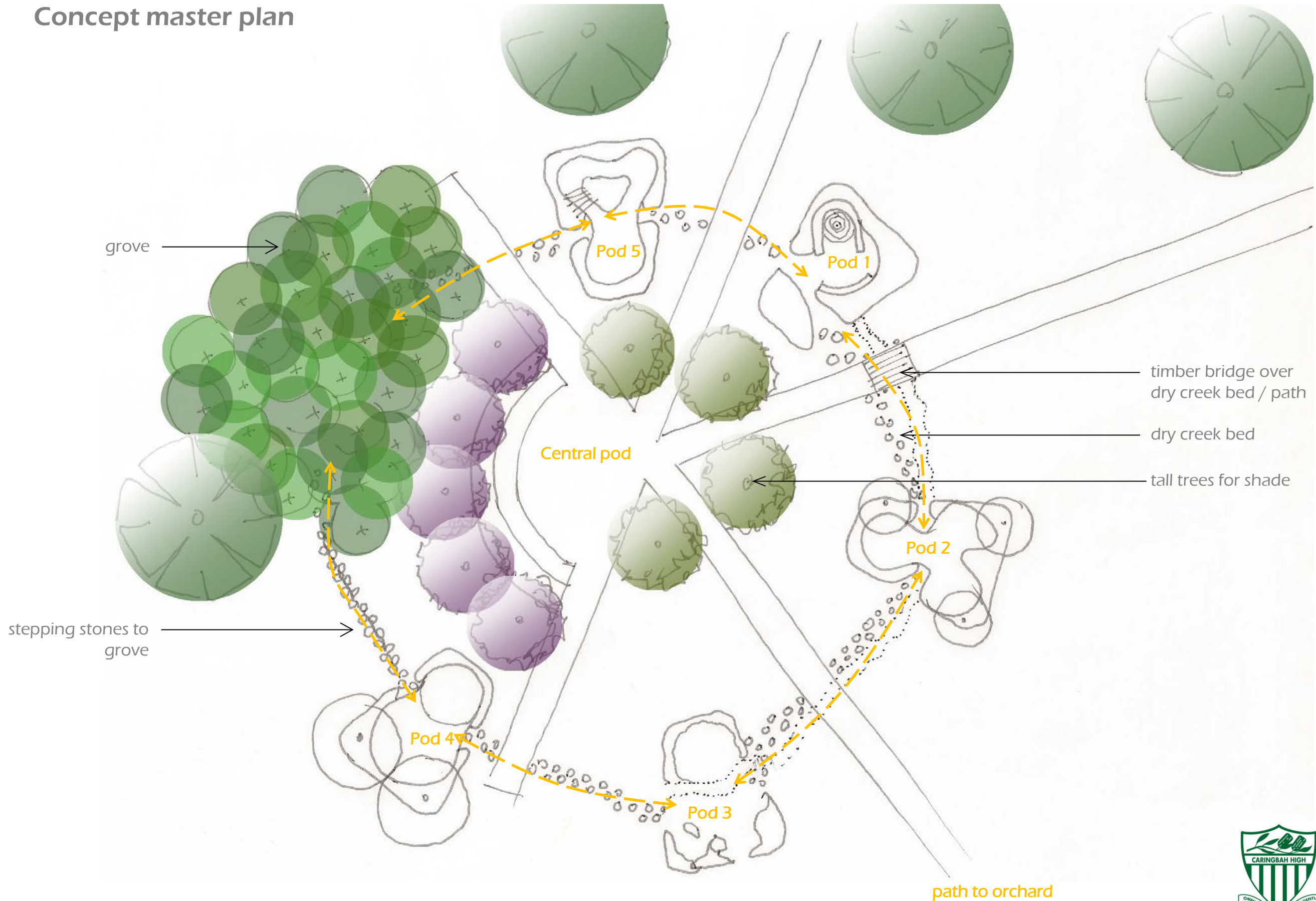


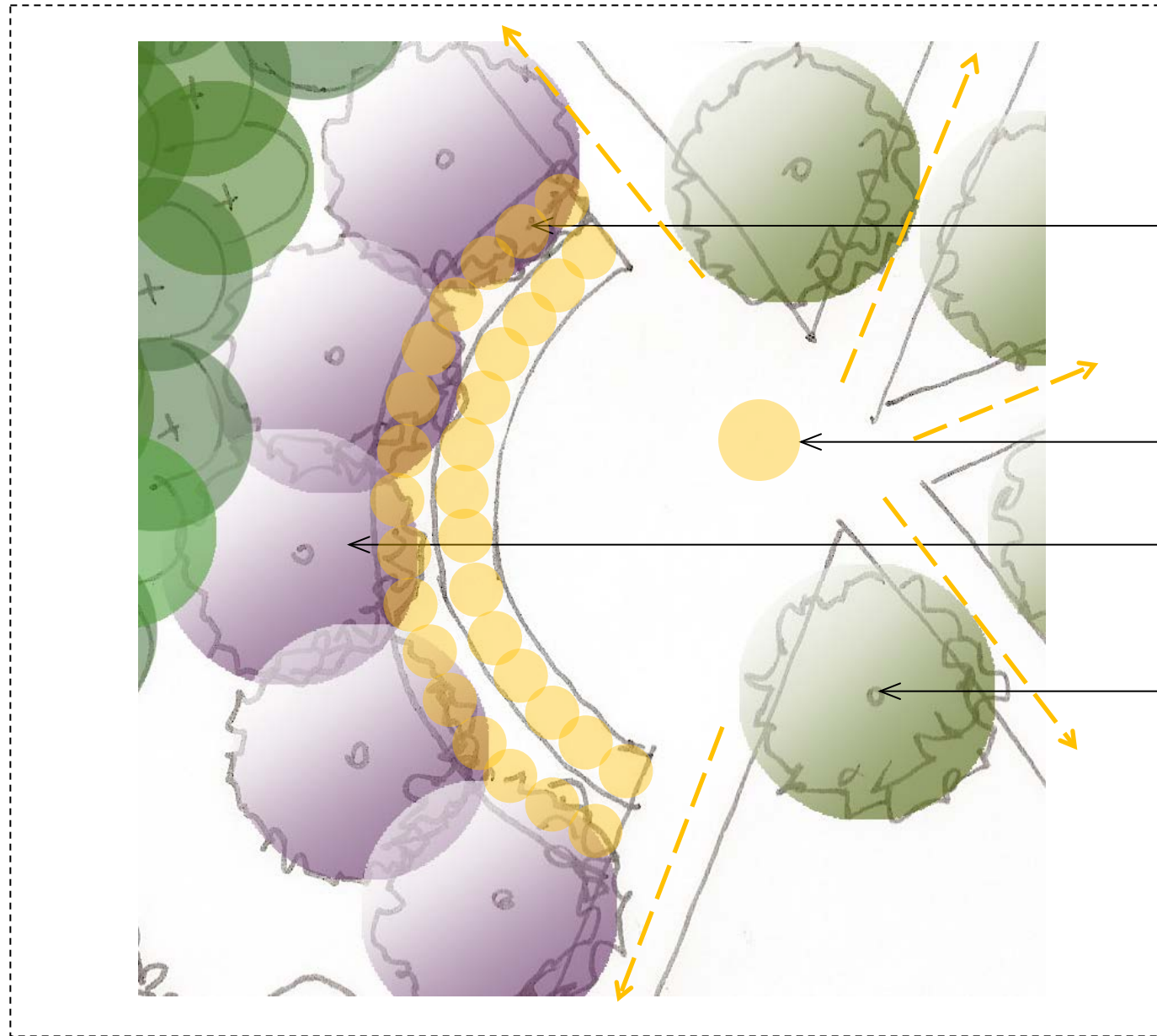
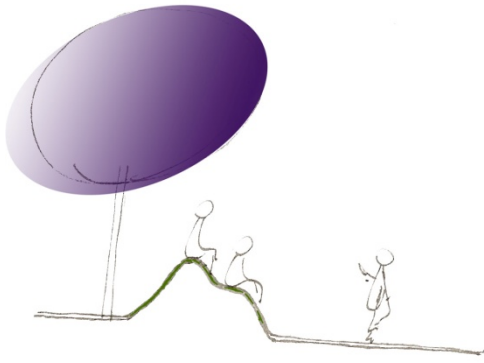


Outdoor learning environment

Concept master plan



Central pod (approx 18000mm dia)



seating to accommodate 30 students at any one time – either grass mounds, timber benches, brick edged grass seats

standing position for teacher

native shrub planting behind mounds ie. *Westringia* sp.

tall trees for shade at intersections of paths



Westringia



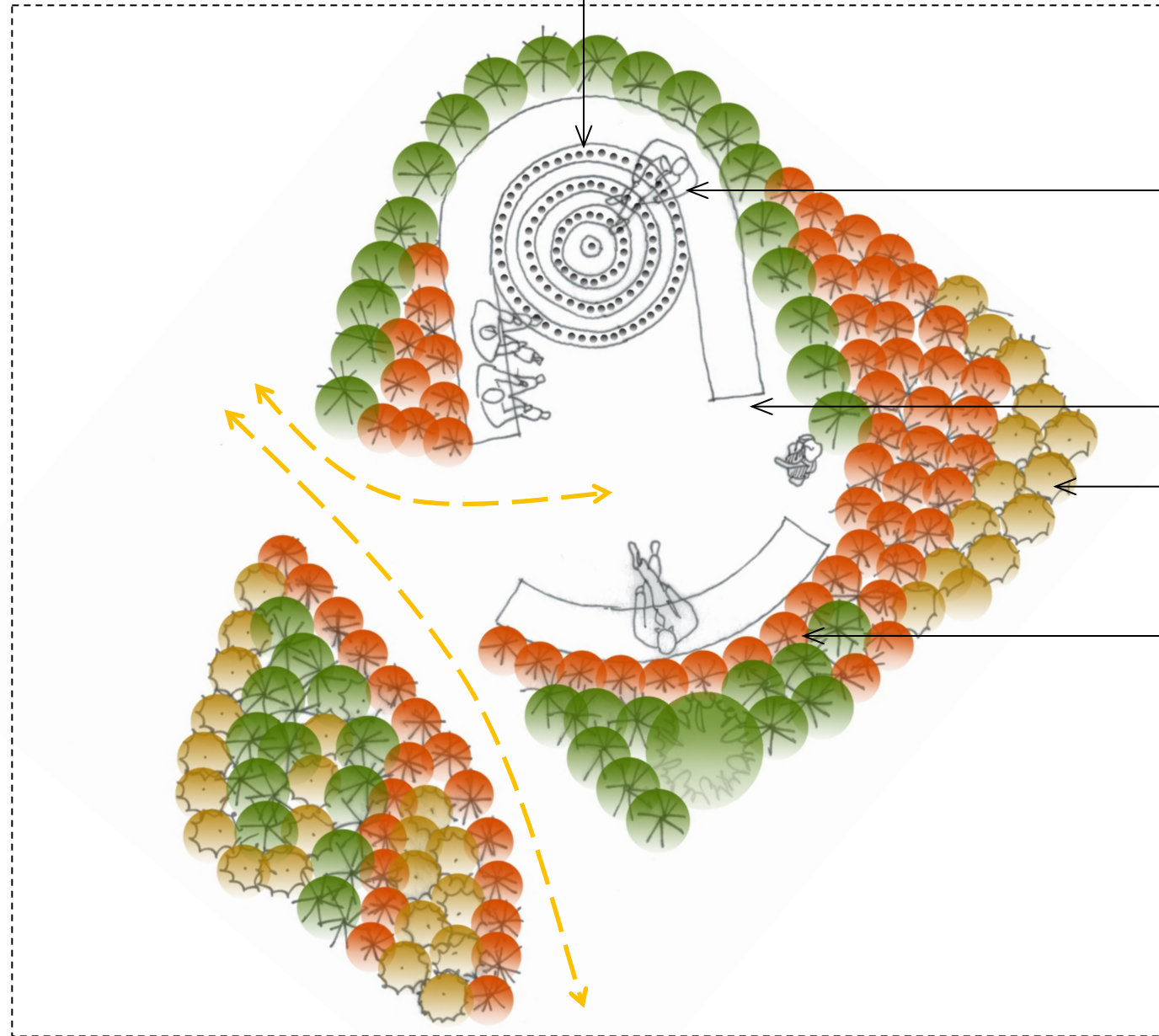
Central pod



Timber bench seating options



Pod 1 – indigenous history (7000mm x 4000mm x 9000mmL)



charcoal coloured stones set into ground to form a pattern. decomposed granite in white tones to provide the contrast

curved timber bench seating around pattern in ground (representing man and campfire). use of Aboriginal symbolism

decomposed granite path / floor in burnt orange tones

mass planting in drifts to replicate the dot effect in the painting

earth toned foliage and flowers

Festuca

Phormium tenax

Anigozanthos

Xanthorrhoea australis

Carex buchananii



Pod 1 – indigenous history



Plant list

Lomandra pallida 'Golden Spray'

Festuca

Carex

Dianella sp.

Anigozanthos

Xanthorrhoea australis

Pennisetum

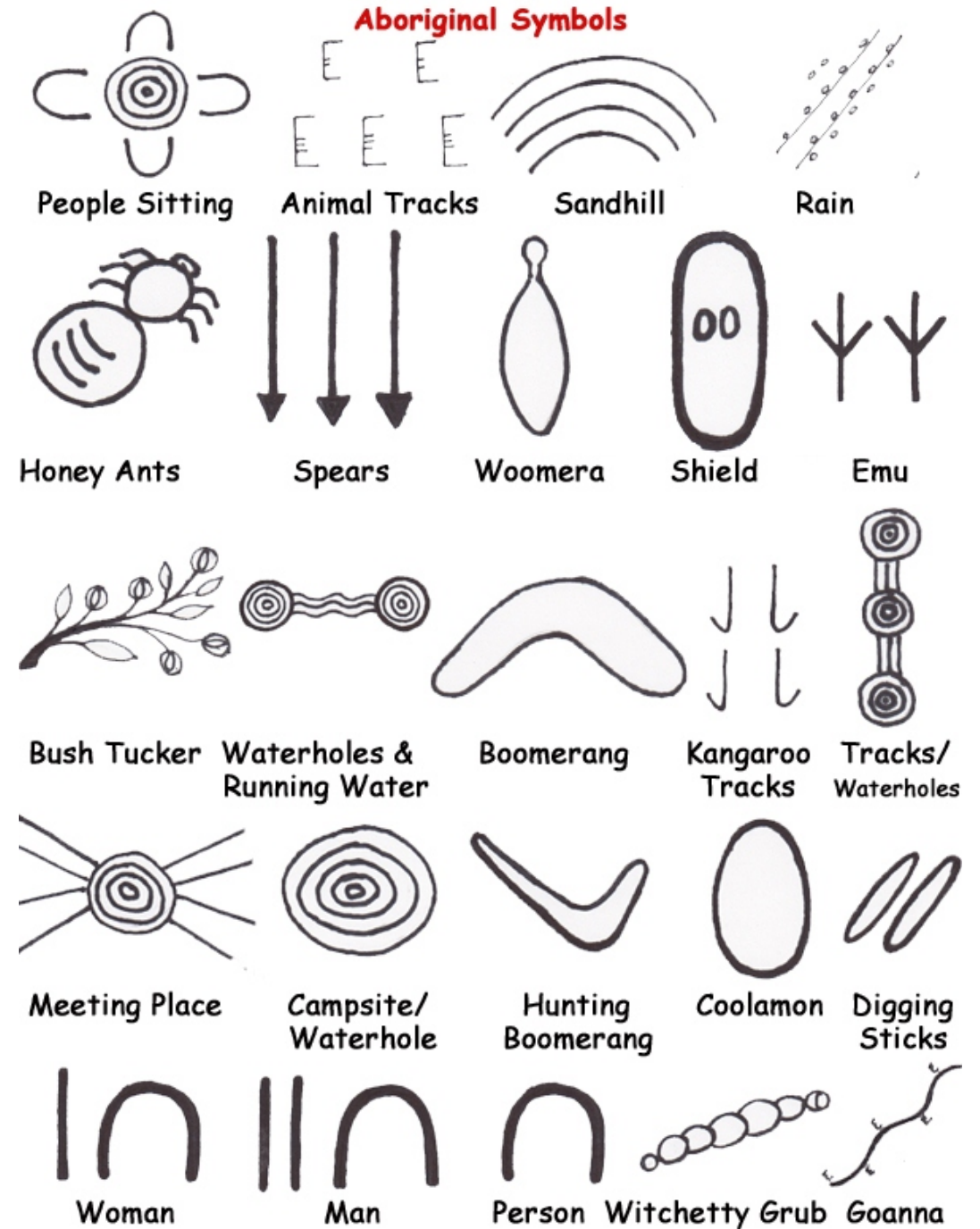
Phormium tenax

Grevillia 'Rocky Rambler'

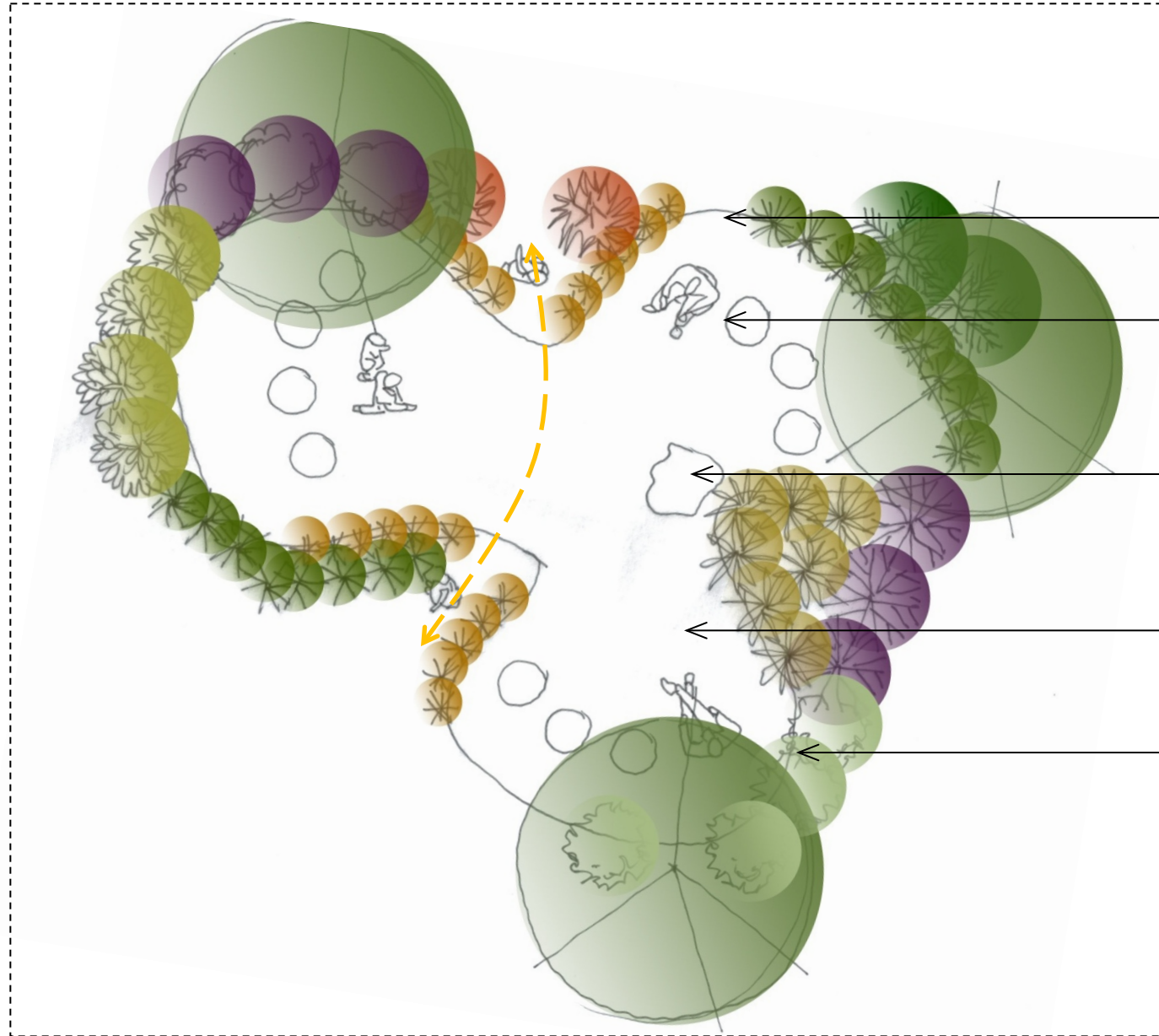
Westringia



Timber bench seating options



Pod 2 – bush tucker (7000mm x 4000mm x 9000mmL)



recycled brick edging

timber stump seating

grinding stone for grinding seeds into flours etc

decomposed granite path / floor in off white – cream tones

plantings of various bush tucker plants. Vary heights, with introduction of trees for shade. Edible ground covers, herbs, spice plants, vines and flowering species.



Acmena smithii

Mentha diemenica

Solanum centrale

Macadamia integrifolia

Smilax glycyphylla



Pod 2 – bush tucker



Timber stump seating

Plant list

Refer to link below for a list of bush tucker plants. Note plant requirements, prior to selection ie. Soil type, sun, shade etc

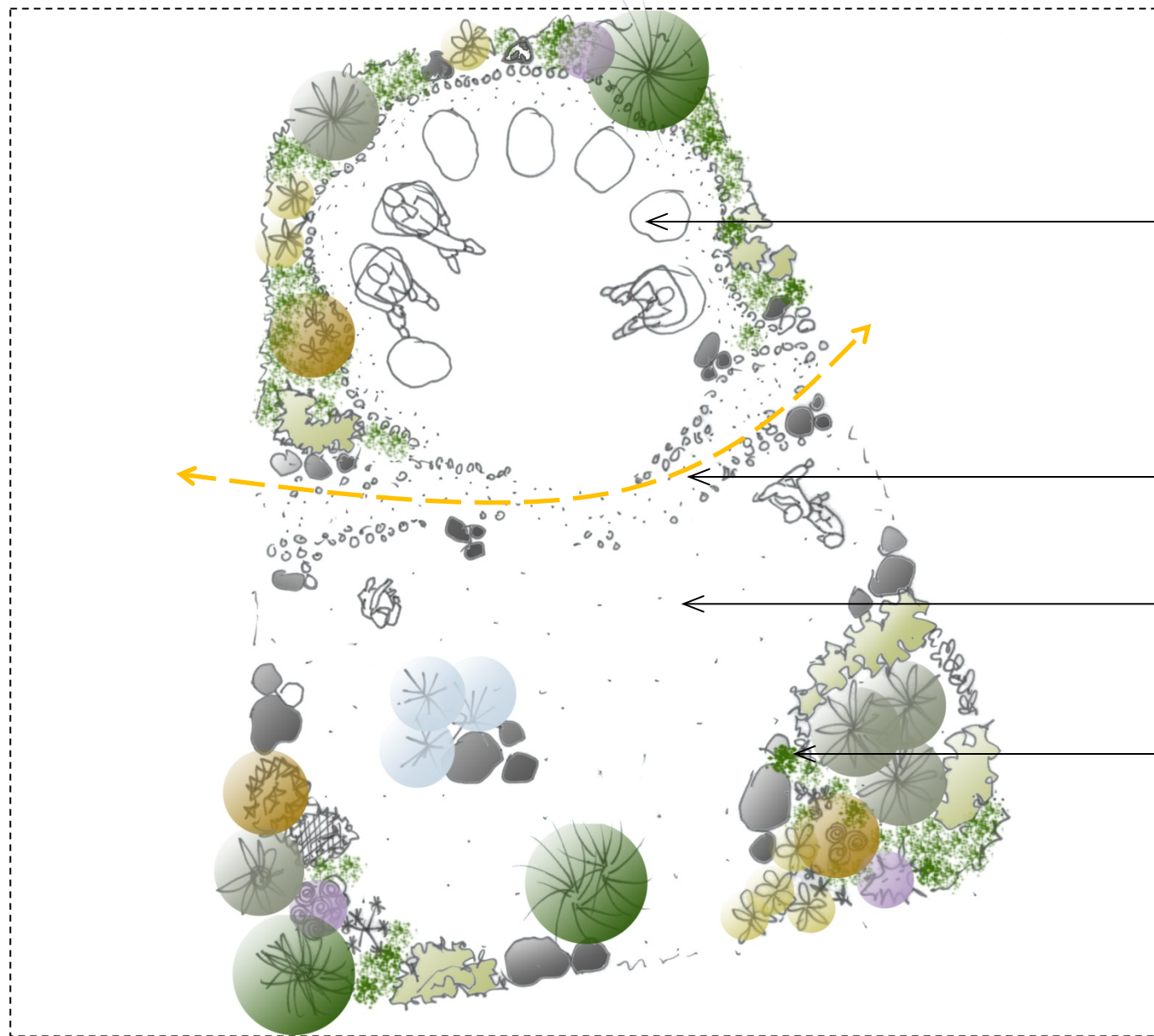
<http://www.livingschools.com.au/pdf/bushtucker.pdf>



Grinding stone



Pod 3 – xeriscape (7000mm x 4000mm x 9000mmL)



— sandstone block seating

— charcoal smooth stones scattered across the space

— decomposed granite path / floor in off white – cream tones

— various low water use, succulents, tufted grasses, scrambling vines and sculptural foliage plants



Scleranthus biflorus



Senecio serpens



Banksia spinulosa 'Birthday Candles'



Dasyliirion



Hibbertia scandens



Miscanthus



Pod 3 – xeriscape



Plant list

Xanthorrhoea minor

Austrostipa stipoides

Dianella brevicaulis

Rhagodia spinescens 'Silver Border'

Carex sp.

Miscathanus sp.

Festuca sp.

Myoporum parvifolium

Eremophila glabra 'Silver Ball'

Lomandra confertifolia 'Mist'



Sandstone rock seating



Pod 4 – meditative (7000mm x 4000mm x 9000mmL)



Crinum pendunculatum



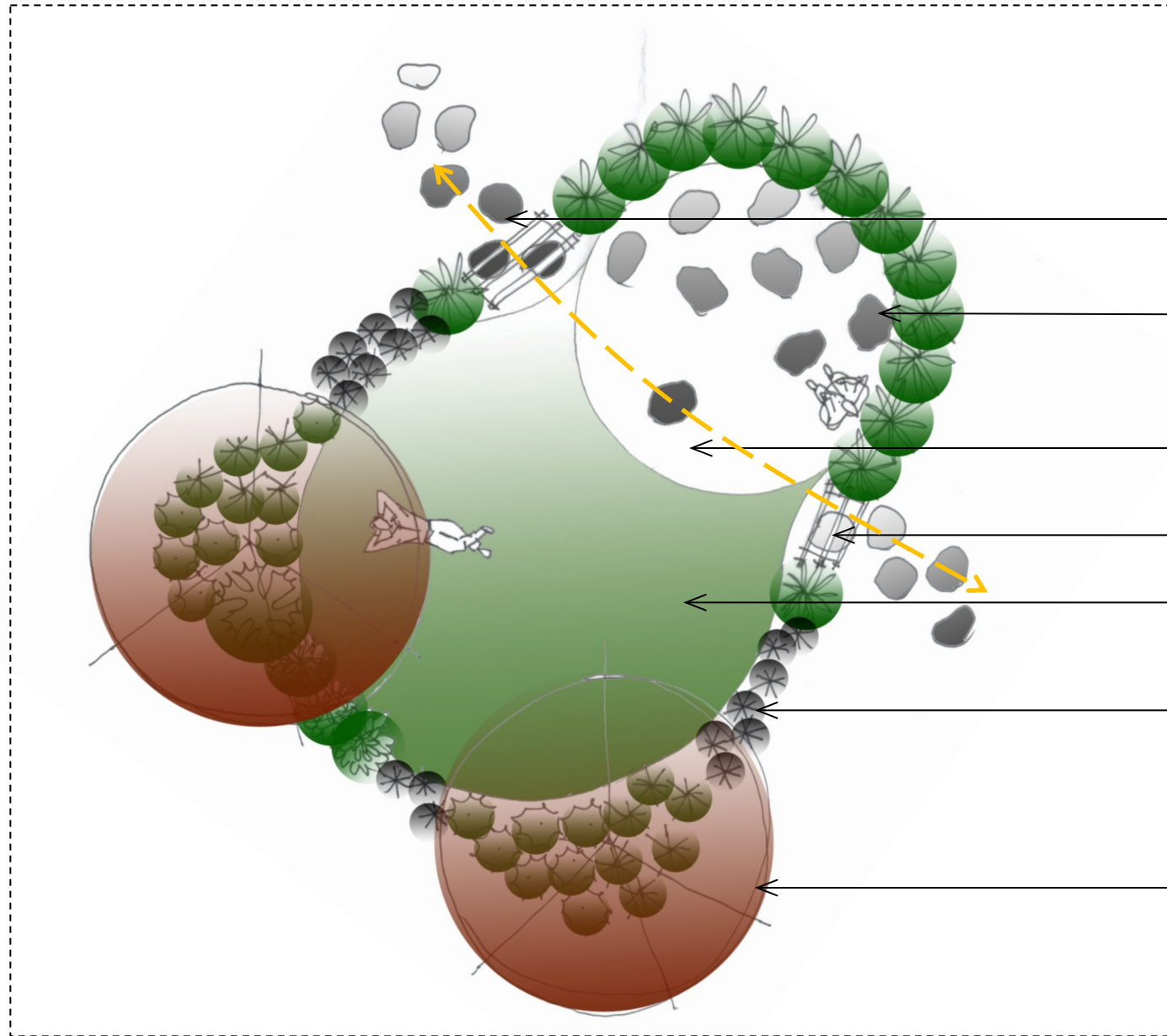
Ophiopogon planiscapus 'Nigrescens'



Acacia congrata



Strobilanthes



basalt, charcoal coloured stepping stones

stones of varying heights to sit upon

white gravel

timber arbour

lawn

small variety of plants. weeping foliage, greens, black, white, silver

deciduous tree (summer shade, winter sun), strong autumn colour



Pod 4 – meditative



Plant list

Xanthorrhoea minor

Pistacia Chinensis (Autumn colour)

Acer rubrum 'Brandywine' (Autum colour)

Casuarina gluca prostrate 'Shagpile'

Acacia Cognata 'Lime magik' or 'River Cascade'

Pittosporum tobira 'Miss Muffet'

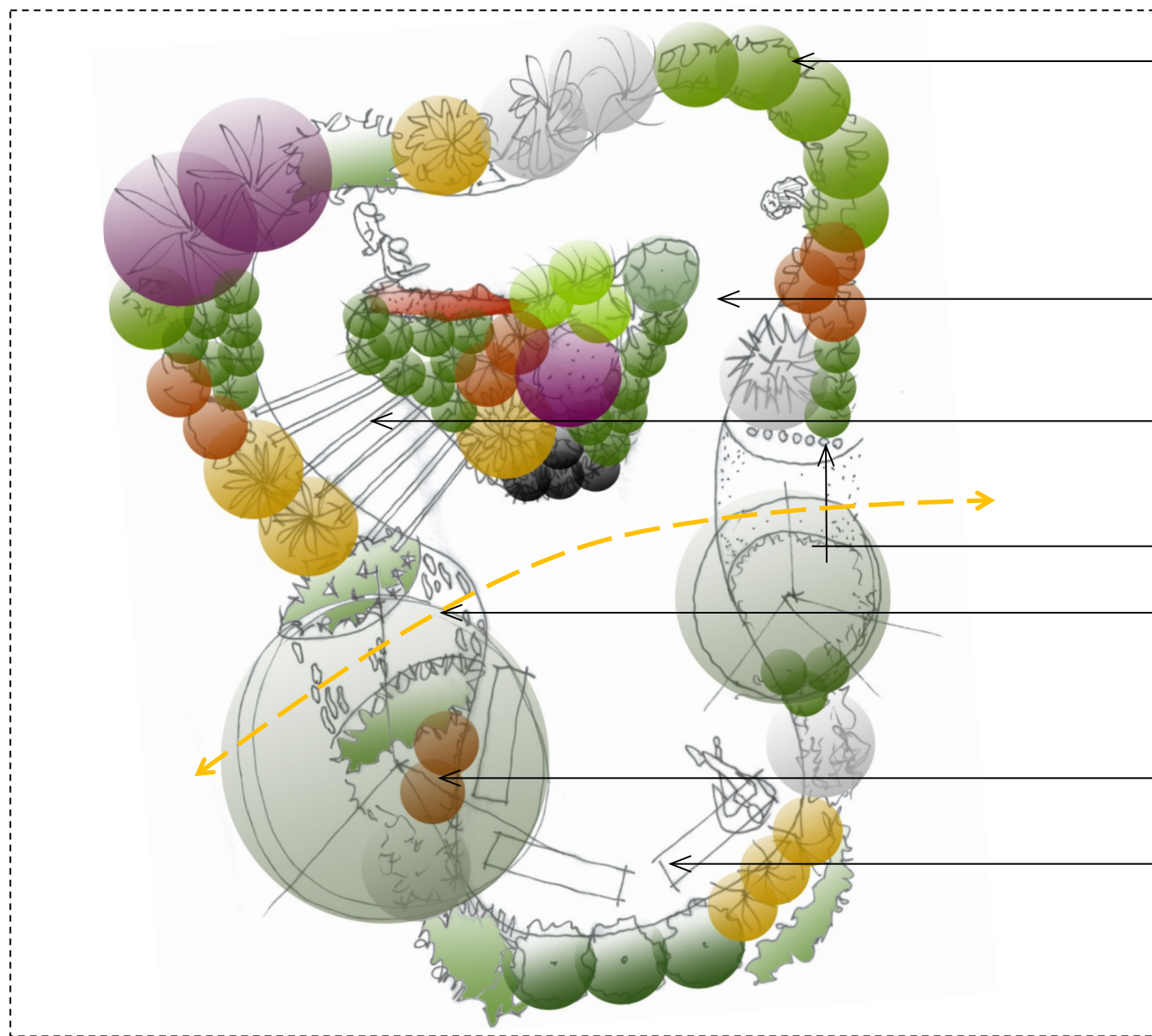
Murraya paniculata

Ajuga



Sandstone rock seating

Pod 5 – sensory (7000mm x 4000mm x 9000mmL)



various textured, coloured and scented plants to brush past. Scented groundcovers creep out onto path to be walked upon

decomposed granite path 'crunches' underfoot with textured inlays

arbour - creates play of light and shadow and cooling shade

hanging sound pipes

cobblestone path

deciduous trees - leaves crunch when walked over

smooth, cold granite or timber seating



Heuchera 'Chocolate Ruffles'



Rosmarinus officinalis



Thymus



Stachys byzantina (Lamb's Ear)



Pod 5 – sensory



Plant list

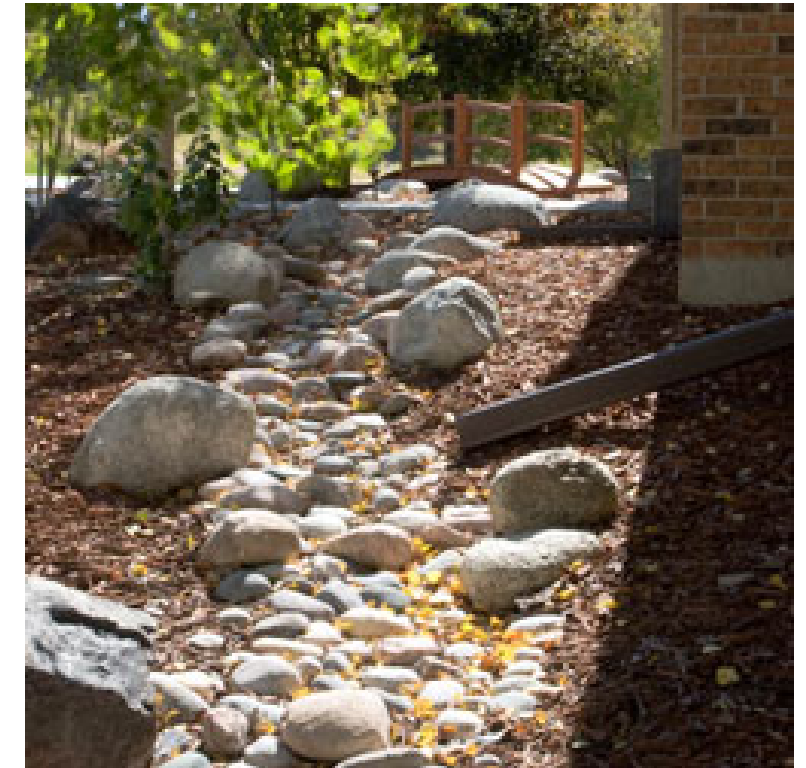
- Lagerstromia indica
- Backhousia citriodora
- Stachys byzantina
- Banksia spinosa
- Thymus serpyllum
- Corymbia ficifolia
- Pennisetum advena
- Echeveria 'Green Velvet'
- Echeveria 'Curlylocks'
- Lomandra 'Tanika'
- Leptospermum parvifolium



Timber bench seating



Dry creek bed



Grove



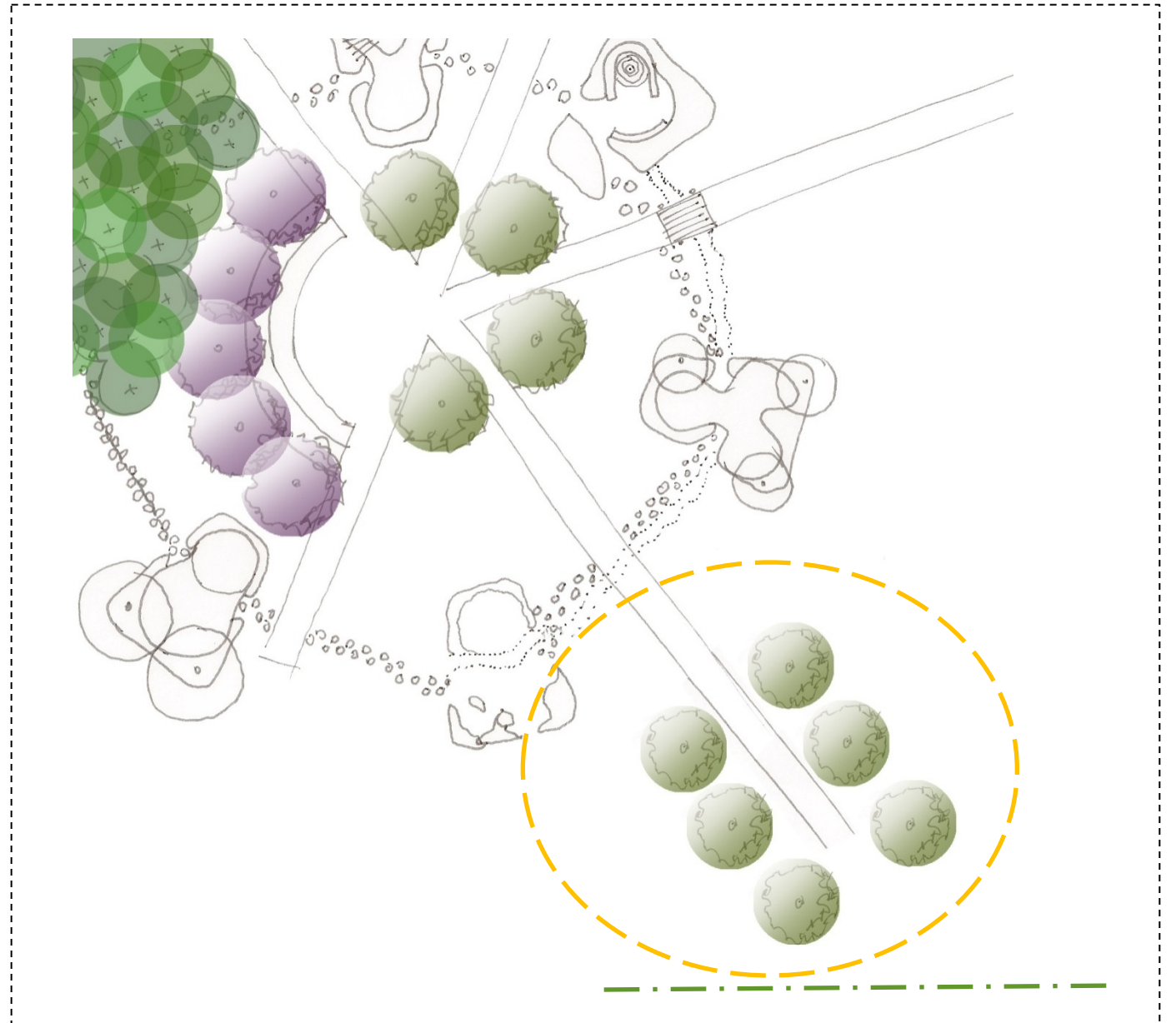
Betula pendula



Melaleuca quinquenervia



Orchard



fruit trees

grape vines

espaliered fruit trees to run along existing fence — . . . —



Perimeter hedge



Syzygium luehmannii 'Royal Flame' – grows to 1500mm

Temporary shade ideas

