

TOOLS

SPUDGERS—DESCRIPTION

1. GENERAL

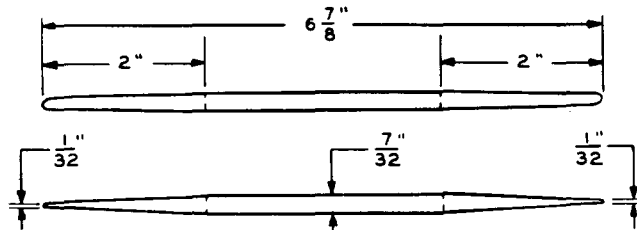
1.01 This section covers noncoded Bell System spudgers.

1.02 The reasons for reissuing this section are listed below:

- (1) To add information to KS-6320 L1
- (2) To add KS-6320 L2.

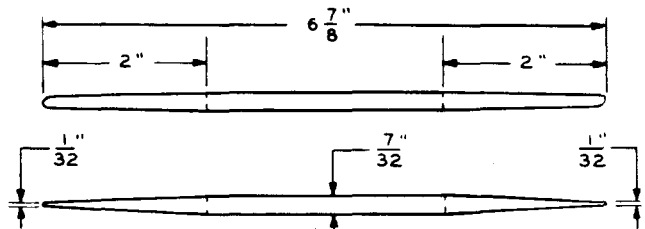
1.03 The information contained in this section supersedes the corresponding information in Section 074-775-101.

STICK, ORANGE, KS-6320 L1 (WOOD)



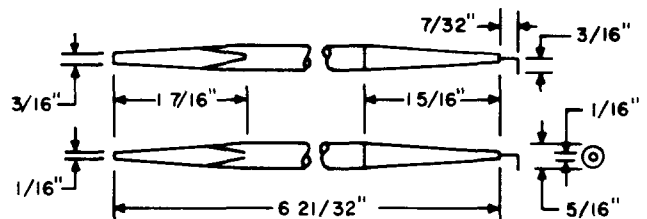
Primarily used in panel offices for testing commutator spring tensions. A wire position tool and other general uses.

STICK, ORANGE, KS-6320 L2 (PLASTIC)



Primarily used in panel offices for testing commutator spring tensions. A wire position tool and other general use. **DO NOT USE FOR SOLDERING OPERATIONS.**

SPUDGER, PLASTIC, KS-22035 (R-1102)



For general use.

NOTICE

Not for use or disclosure outside the
Bell System except under written agreement