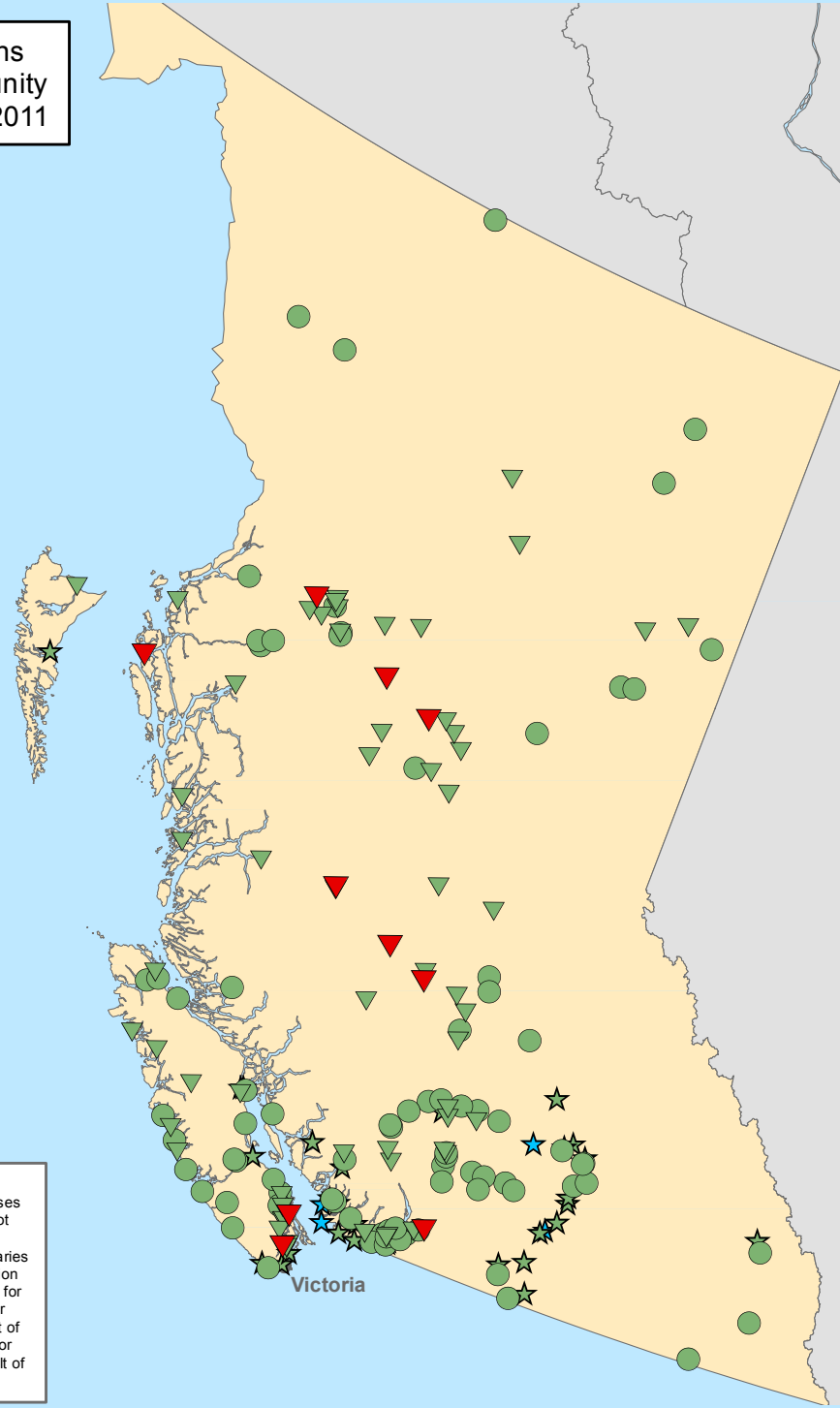


Well-Being in First Nations  
Communities: The Community  
Well-Being (CWB) Index, 2011

British Columbia  
CWB Index Score Range, 2011

- ▼ 1 - 49
- ▼ 50 - 59
- 60 - 69
- ★ 70 - 79
- ★ 80 - 100

Higher scores  
indicate a greater  
level of well-being.



Source: Index produced by  
Aboriginal Affairs and Northern  
Development Canada using data  
from the 2011 National Household  
Survey. Data are presented at the  
census subdivision (CSD) level.  
Mapping: Aboriginal Affairs and  
Northern Development Canada  
April 2015

**DISCLAIMER**  
These drawings are distributed for informational purposes only. Her Majesty in right of Canada (DIAND) does not warrant or guarantee the accuracy or completeness of the information contained in the drawings. The boundaries indicated are approximate and may be subject to revision in the future. These drawings are not to be relied upon for any purpose or activity, including but not limited to for assessing consultation obligations. Her Majesty in right of Canada (DIAND) does not assume any legal liability or responsibility for any damage or loss incurred as a result of the use of the drawings.

