



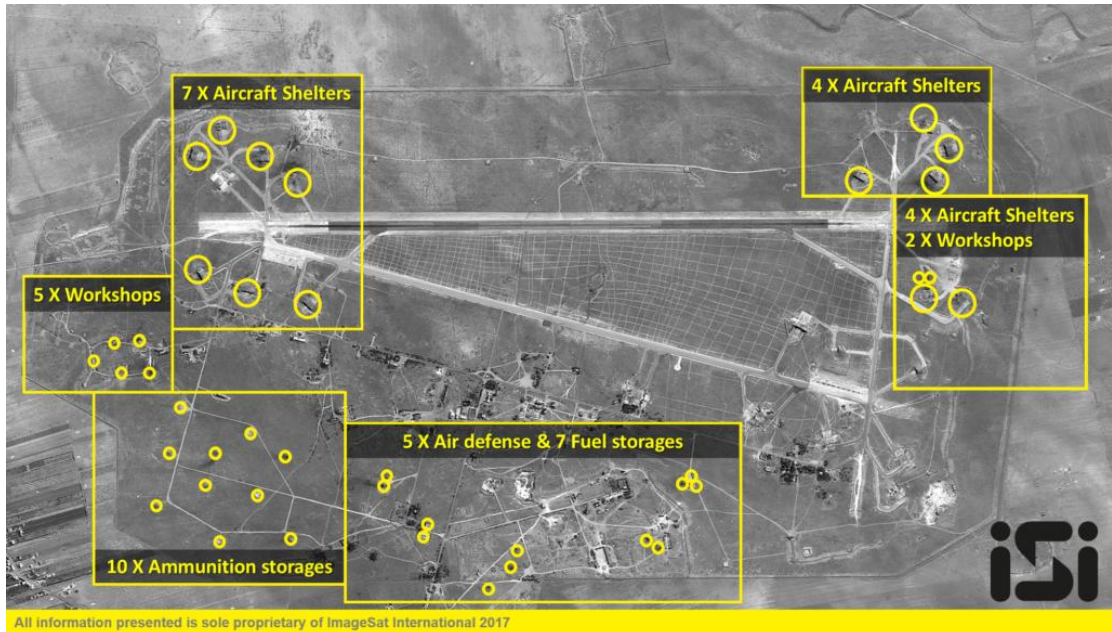
Based on very high resolution imagery captured less than 10 hours after the attack, ISI presents in depth battle damage

The Shayrat Airfield base was attacked by the US military using Tomahawk cruise missiles. According to the Pentagon, 59 missiles fired at the base, 58 of them hit targets. [According to the Washington post](#), the Tomahawk cruise missile was last used by the Pentagon in October, when the military launched Tomahawks from the Red Sea at three coastal radar sites in Yemen.

“President Donald J. Trump ordered the attack on Al-Shayrat Air Base, the base from which the chemical attack in Syria’s Idlib province launched. The missiles launched from U.S. Navy ships in the Eastern Mediterranean Sea”, says the [Pentagon announcement](#).

“Shortly after the president’s address, Pentagon spokesman Navy Capt. Jeff Davis issued a statement providing details of the strike. It took place at about 8:40 p.m. EDT — 4:40 a.m. April 7 in Syria, he said.

“The strike was conducted using Tomahawk Land Attack Missiles, or TLAMs, launched from the destroyers USS Porter and USS Ross in the eastern Mediterranean Sea, Davis said in his statement. A total of 59 TLAMs targeted aircraft, hardened aircraft shelters, petroleum and logistical storage, ammunition supply bunkers, air defense systems, and radars.”



The results of the attack

ISI very high resolution satellite imagery was able to reveal the results of the Tomahawk cruise missiles attack on the Al-Shayrat Air Base. According to ISI experts, the total of 44 targets hit. Several targets may have hit twice. Photo and analysis of the attack were carried out within 10 hours of the attack.



An in-depth examination of the damage to the objectives shows that 13 double hardened aircraft shelters (HAS) got 23 hits. 5 workshops got hit. The workshops are not necessarily related to WMD, but to aircraft and their ability to do maintenance and fly.



Ten ammunition storages got hit. Seven fuel reservoirs of the AFB got hit at two sites with eight hits total. Two locations remain untouched. One SA6 Battery utterly destroyed along with its radars and control systems. In total, five SA6 Battery elements hit.



The results show that the target hits were accurate and that the Tomahawks have been used effectively against quality targets.

Although 58 missiles hit the base, it seems that the overall damage to the base is limited because the warhead of the Tomahawk is not considered large and weighs about 450 kg.

