

Rhaphidophora hongkongensis Schott (Araceae), A New Addition to the Flora of Taiwan

Tsai-Wen Hsu⁽¹⁾, Nien-June Chung⁽²⁾ and Jenn-Che Wang^(3,4)

(Manuscript received 17 October 2000; accepted 30 October 2000)

ABSTRACT: *Rhaphidophora hongkongensis* Schott (Araceae) is here reported for the first time from Taiwan. The genus is also first reported from Taiwan proper. Description, line drawing, photograph, and a key to the Taiwanese species of *Rhaphidophora* are provided.

KEY WORDS: Araceae, New record, *Rhaphidophora*, *Rhaphidophora hongkongensis*, Taiwan, Taxonomy.

INTRODUCTION

During the past years, terrestrial members of Taiwanese Araceae have been taxonomically revised by Hettterscheid and Peng (1995), Wang (1996), Wang and Yang (1996), Huang and Wu (1997). However, the epiphytic or climbing members are still unfamiliar to the local taxonomists. The present account describes a newly recorded liana of the genus *Rhaphidophora* for the flora of Taiwan proper.

The genus *Rhaphidophora* Hassk. comprises about 120 species distributed widely in tropical southeastern Asia, tropical Africa, and Australasia (Mayo *et al.*, 1997). Of the genus in Taiwan, only one species, *R. liukiensis* Hatusima (as *R. perkinsiae* Engl. by Liu and Huang, 1978), was formerly reported from Lanyu Is., offshore southeastern Taiwan (Liu and Huang, 1978; Chang, 1984). In other word, this genus was heretofore unknown to the flora of Taiwan proper. In our course of preparing the Flora of Taiwan, second edition, a new record, *Rhaphidophora hongkongensis* Schott, was found from central Taiwan. The newly found species is easily distinguished from *R. liukiensis* Hatusima by the following key.

TAXONOMIC TREATMENT

Key to species

1. Leaf base cuneate; peduncle 2-4 cm long *R. hongkongensis*
1. Leaf base round or shallowly cordate; peduncle more than 10 cm long *R. liukiensis*

Rhaphidophora hongkongensis Schott, Bonplandia 5: 45. 1857; Hu, Dansk Bot. Arkiv 23: 422. 1968; Li, Fl. Reipubl. Popularis Sin. 13(2): 36. *pl.* 6: 3-4. 1979; Li & Long, Acta Bot. Yunnan Suppl. 10: 20. 1998. 香港針房藤 Figs. 1-2

1. Division of Botany, Taiwan Endemic Species Research Institute, Nantou 552, Taiwan, R.O.C.
2. The Experimental Forest, National Taiwan University, Chushan, Nantou, Taiwan, R.O.C.
3. Department of Biology, National Taiwan Normal University, Taipei 11718, Taiwan, R.O.C.
4. Corresponding author. Tel.: 02-29326234 ext. 229 Fax: 02-29312904 e-mail: biofv017@scc.ntnu.edu.tw

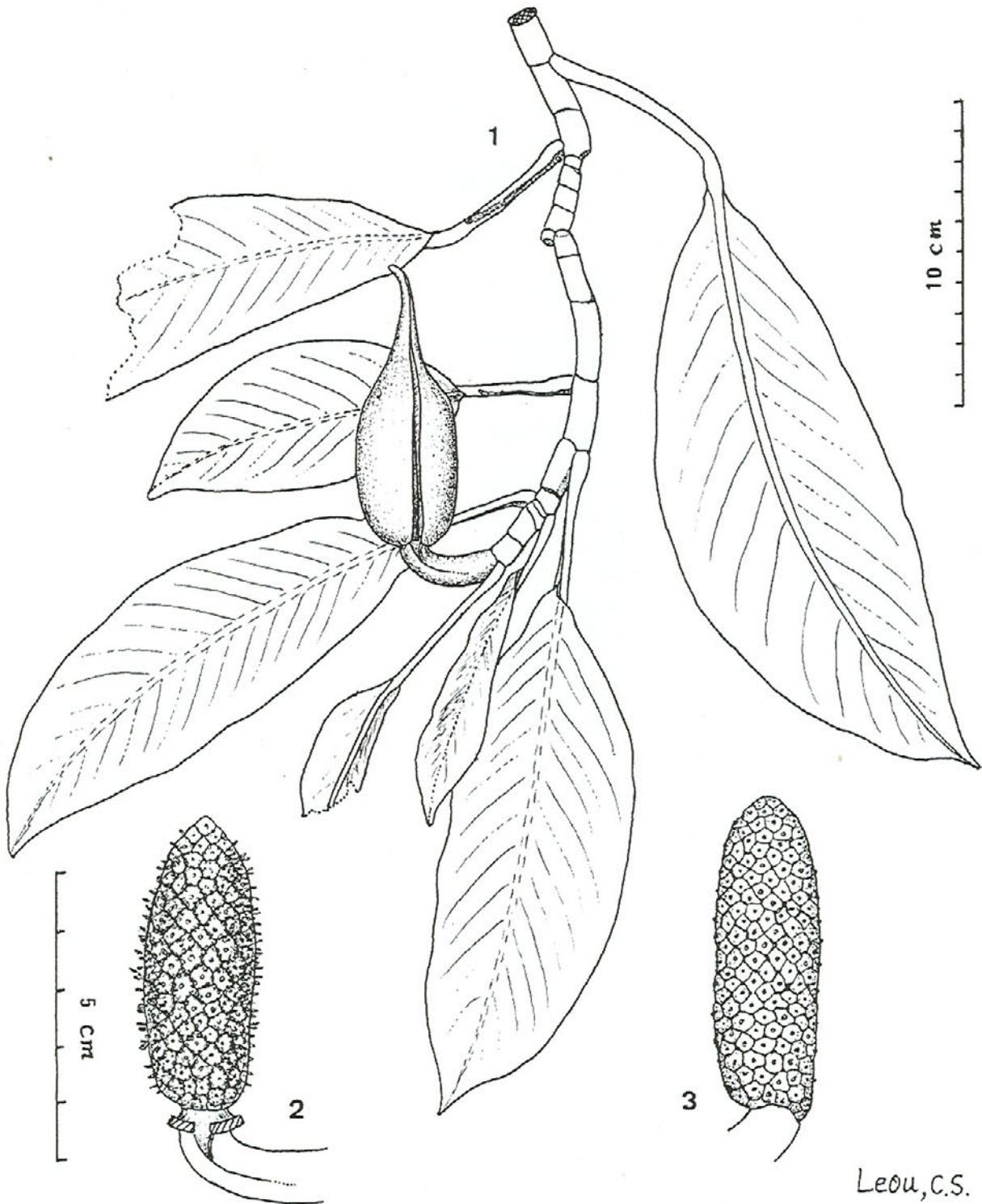


Fig. 1. *Rhapsidophora hongkongensis* Schott. 1. Habit; 2. Inflorescence, showing the pistillate stage; 3. Inflorescence, showing the staminate stage.

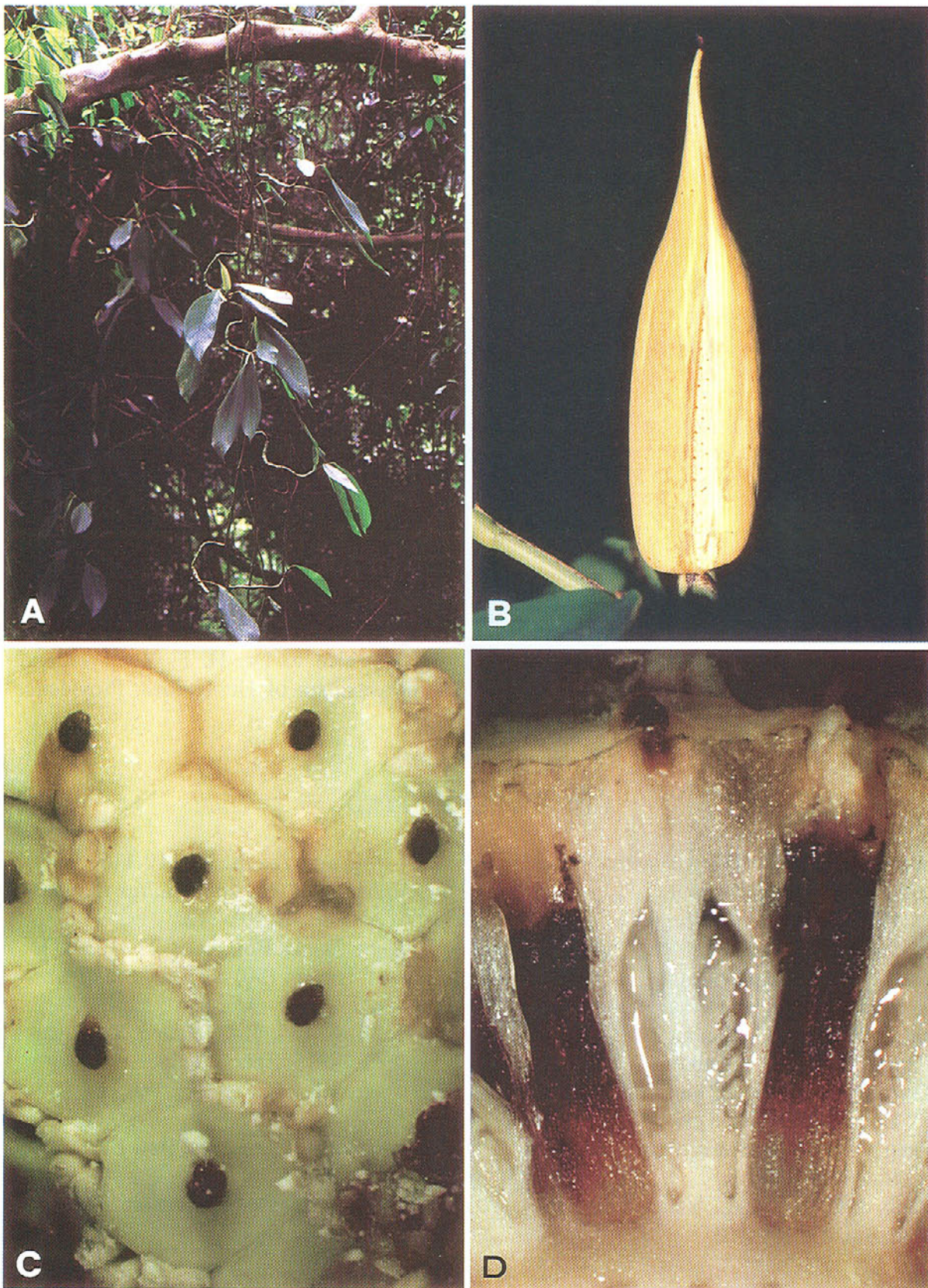


Fig. 2. *Rhaphidophora hongkongensis* Schott. A. Habit in its natural habitat; B. Inflorescence with spathe; C. Front view of flowers; D. Longitudinal section of flower.

Large lianas. Stem climbing or pendulous, thick, cylindrical, rooting at nodes. Leaves alternate, distichous, simple; petiole 4-7 cm, grooved above, sheathing to pulvinus; blade 19-30 × 5-9 cm, chartaceous or subcoriaceous, oblique elliptic, sometimes oblong-lanceolate, apex acuminate, base cuneate, margin entire, glabrous, green above, pale green below, midrib flat on upper surface, raised on lower surface, parallel lateral veins numerous, slightly raised on both surfaces when dry. Inflorescence terminal, peduncle 2-4 cm; spathe ovoid-cylindrical, gradually narrowing toward apex, with a thick long-cuspidate tip, 6-9 cm long, 2.5-3 cm in diameter, green to light yellow, thick coriaceous; spadix cylindrical, narrowing toward both end, ca. 5 cm long; 1.5 cm thick, ovary hexagonal-cylindrical, apex truncate, style absent, stigma capitate, black.

Distribution: Southern China (Fujian, Guangdong, Hainan, Guangxi, Guizhou, Yunnan) (Li, 1979), Myanma, Malaysia, Thailand (Hu, 1968), Laos and Vietnam. In Taiwan, found in primary broad-leaved forests at low elevations.

Specimens examined: **TAIWAN**. CHIAYI: Fanlu Hsiang, Tsaoshan Village, en route to Lienyun Waterfall, alt. 220-250 m, epiphytic in broad-leaved forest, often hanging down, *C. I Peng 13450* (HAST); same loc., *T. W. Hsu 7482* (TESRI), *T. W. Hsu 8375* (TESRI). MIAOLI: Shihtan, 8 May 1998, *S. Y. Lu s. n.* (TNU); Mingter Reservoir, *Chung & Leou 5055* (TNU).

ACKNOWLEDGEMENTS

We wish to express our gratitude to Dr. C. S. Leou, The Experimental Forest, National Taiwan University, for his excellent line drawing; and also to Dr. H. F. Yen, National Museum of Nature Science, and Dr. K. C. Yang, Department of Humanities, Providence University, for sending us living material.

LITERATURE CITED

- Chang, C.-E. 1984. The Araceae of Botel Tobago. *J. Phytogeogr. Taxon.* **32**: 110-115.
- Hettterscheid, W. L. A. and C.-I. Peng. 1995. Notes on the genus *Amorphophallus* (Araceae) IV. Revision of the species in Taiwan. *Bot. Bull. Acad. Sin.* **36**: 101-112.
- Hu, S.-Y. 1968. Studies in the flora of Thailand 41-Araceae. *Dansk Bot. Arkiv* **23**: 412-457.
- Huang, T.-C. and M.-J. Wu. 1997. Notes on the Flora of Taiwan (30)-*Arisaema nanjenense* Huang & Wu *sp. nov.* (Araceae). *Taiwania* **42**: 165-173.
- Liu, T.-S and T.-C. Huang. 1978. Araceae. In: Li, H.-L., T.-S. Liu, T.-C. Huang, T. Koyama and C. E. DeVol (eds.), *Flora of Taiwan*. Vol. V. pp. 796-815. Epoch, Taipei.
- Mayo, S. J., J. Bogner and P. C. Boyce. 1997. The genera of Araceae. The trustees, Royal Botanic Gardens, Kew.
- Wang, J.-C. 1996. The systematic study of Taiwanese *Arisaema* (Araceae). *Bot. Bull. Acad. Sin.* **37**: 61-87.
- Wang, J.-C. and K.-C. Yang. 1996. The genus *Typhonium* (Araceae) in Taiwan. *Bot. Bull. Acad. Sin.* **37**: 159-163.

台灣產天南星科新記錄植物—香港針房藤

許再文⁽¹⁾、鍾年鈞⁽²⁾、王震哲^(3,4)

(收稿日期：2000年10月17日；接受日期：2000年10月30日)

摘 要

根據台灣植物誌及過往文獻之記載，台灣產之針房藤屬植物僅有一種—琉球針房藤(*Rhaphidophora liukiensis* Hatusima)，且僅侷限分布於蘭嶼。本文報導在台灣本島首次發現之本屬新記錄種—香港針房藤(*R. hongkongensis* Schott)，並提供描述、檢索表、照片及繪圖。

關鍵詞：天南星科，新記錄，針房藤屬，香港針房藤，台灣，分類。

1. 行政院農業委員會特有生物研究保育中心植物組，南投縣 552，台灣，中華民國。
2. 國立台灣大學實驗林管理處，南投縣竹山鎮，台灣，中華民國。
3. 國立台灣師範大學生物學系，台北市 11718，台灣，中華民國。
4. 通訊連絡員。