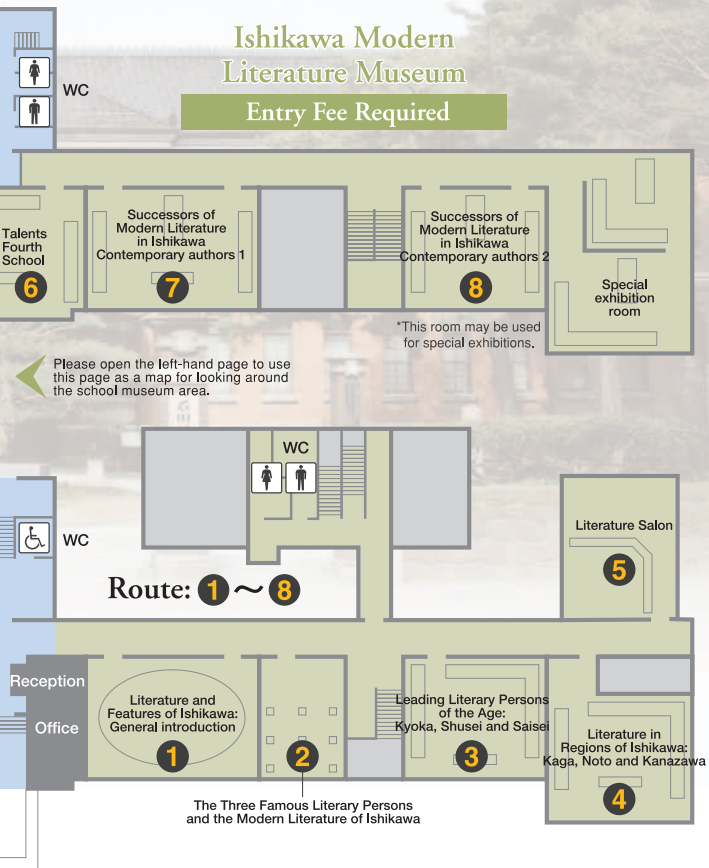


# cultural exchange

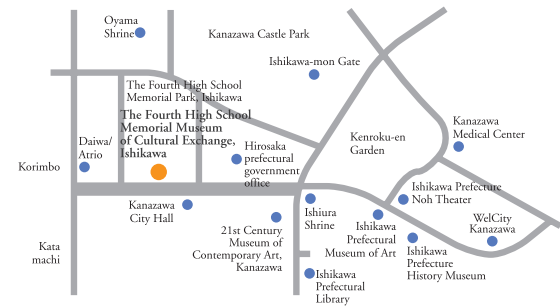


## The Main Building of the School — Symbol of the Academic City of Kanazawa

This red brick building was the main structure of the former Fourth Junior High School. The construction was started in June 1889 and completed in July 1891. It was designed by the architects of the former Ministry of Education, Yamaguchi Hanroku and Kuru Masamichi. The name of the school was changed to the Fourth High School in 1894. The school was the symbol of Kanazawa as an academic city, and was very popular among local residents. It has produced many people who played leading roles in politics, industry and academic fields. The school was closed in 1950 when the school system was reformed. The building was designated as a national important cultural asset.



\* The building is beautifully lit up at night. (From sunset until 10:00pm)



### Access

By bus : Take a bus at JR Kanazawa Station east bus terminal, get off at Korimbo (Atrio), and walk for two minutes.

By car : 10-minute drive from JR Kanazawa Station

\* If you drive, park your car at Hiroshima prefectural government office, and have your parking ticket stamped at the museum.  
Please use public transportation if possible since there are not many parking spaces.

### Opening hours

Rental rooms / Retro lounge: 9:00am~9:00pm

Exhibition rooms: 9:00am~5:00pm (Admission by 4:30pm)

### Closed

Year-end and New Year's holidays (Dec.29-Jan.3)

\*Closed when exhibitions are being changed.

### Admission fee

The Fourth High School Memorial Hall, Ishikawa is free of charge.

Admission fees for the Ishikawa Modern Literature Museum are as follows:

	Individual	Group (20 or more)
Adults	360 yen	290 yen
University students	290 yen	230 yen
High school students and younger	Free	Free

\* The above fees are subject to change during special exhibitions.

## The Fourth High School Memorial Museum of Cultural Exchange, Ishikawa

2-2-5 Hirozaka, Kanazawa, Ishikawa 920-0962  
TEL 076-262-5464 FAX 076-261-1609  
<http://www.pref.ishikawa.jp/shiko-kinbun/>

# The Fourth High School Memorial Museum of Cultural Exchange, Ishikawa

石川四高記念文化交流館

# For your studies and



石川四高記念  
文化交流館

The Fourth High School Memorial Museum of Cultural Exchange, Ishikawa consists of two parts: The Fourth High School Memorial Hall, Ishikawa which introduces the history and traditions of the Fourth High School and rents the rooms for various purposes; and Ishikawa Modern Literature Museum, which introduces documents and articles of the literary persons of Ishikawa. In April 2008, the museum was reborn as a complex for studies and cultural exchange. Please use this museum for studying and holding events.



## Ishikawa Modern Literature Museum

Ishikawa Modern Literature Museum exhibits the books and manuscripts of literary persons who were born or lived in Ishikawa, and the articles they used. The exhibits present the three famous writers Izumi Kyoka, Tokuda Shusei and Murou Saisei, as well as other important figures in modern literature. Public readings are held to introduce the outstanding works of these authors to a wide audience. The Museum will continue its work appropriate to Ishikawa's proud literary traditions.

### Literature and Features of Ishikawa

In this section, the literature and features of Ishikawa are presented on the screen. You can also have fun learning all about Ishikawa by stretching out your hands over the tables. Sentences about the features of Ishikawa will be projected onto your palms.



### Ishikawa's Literature, Influenced By Its Unique Features

Literary persons and philosophers who lived in each region of Ishikawa are presented by means of panels. You will see how they have common features and differences depending on the regions where they lived.



●Exhibited literary persons  
Shimada Seijiro, Fukada Kyuya,  
Kano Sakujiro, Tsubono Tekkyu,  
Nishida Kitaro, Nagasawa Mitsuo,  
etc.

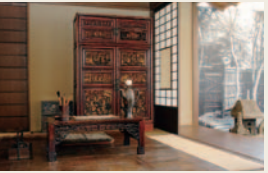


### The Three Famous Literary Persons and the Modern Literature of Ishikawa

The three famous literary persons — Izumi Kyoka, Tokuda Shusei and Murou Saisei — are introduced. You will learn about their relationships, the characteristics of the age when they lived, and the network of literary persons that centered around them.

### Literature Salon

Saisei's reading room, which was built in Magome, Tokyo was moved and restored. You can enjoy reading here yourself.



### The Leading Literature of the Age

The three famous literary persons of Kyoka, Shusei and Saisei, with their distinctive characteristics, are compared and examined through their handwritings and the articles they left.



### Versatile Talents from the Fourth High School

Various talented people who studied at the Fourth High School are introduced.

●Exhibited literary persons  
Inoue Yasushi, Nakano Shigeharu, Nishida Kitaro, etc.



### Literary Traditions of Ishikawa

Literary persons who were born or lived in Ishikawa in recent years, and the novels set in Ishikawa are introduced.

●Exhibited literary persons  
Itsuki Hiroyuki, Yuikawa Kei, etc.



## The Fourth High School Memorial Hall, Ishikawa

This building housed the Fourth High School under the old system of education for about 60 years from 1893. The museum introduces the school, its environment, and the age, which produced many great graduates. The museum has some rooms that can be rented for your learning or presentation. Admission to the exhibition section is free of charge. Please enjoy the exhibition and have a relaxing time.

### The Students and the People at the Time of the High School

Pictures and other materials showing the relationship between the students and local residents are exhibited.



### The Lives of the Students and Teachers

The lives of the students and teachers in the dormitory and their exchanges with the people in the community are presented by means of historical models.



### The History of the School

A bookcase with Encyclopedia Britannica, which was donated by a local citizen, stands in the center of the room, and the dramatic history of the school, from its establishment to its closure, is introduced.



### Hokushin-kai and Nankagun :

The Alumni Association and the Sport Clubs  
The big drum and championship flag of Nankagun, the student organization of sport clubs, are displayed. You will feel the passion the students had for their club activities.



### Retro Lounge

This is a retro-style lounge with old chairs and tables, and displays of old articles. The room has vending machines and a souvenir shop.



## Space for Rent

### Rental Rooms

The former classrooms can be rented for lectures, exhibitions or meetings.

In Room 5, old chairs and desks are used to recreate an old-time classroom setting.



### Rental fee

Time	Per room
9:00~12:00	1,850 yen
13:00~16:00	1,850 yen
17:00~21:00	2,880 yen
9:00~21:00 (All day)	6,580 yen

• A 30% air-conditioning fee is added during the period from July 1 to Aug. 31 and from Dec. 1 to March 31.  
• A 30% extra fee is added when charged events are held in the rooms.  
• Please see the website below for details and availability of the rental rooms.  
<http://www.pref.ishikawa.jp/shiko-kinbun/>