

Rairangpur Airport Orissa



Airports Authority of India

INDEX

	Page No
1. About The City	1-2
2. Technical Details.....	3-7
3. Google Earth Pictures	8
4. Site Photographs.....	9
5. Grid Map.....	10
6. Approach Rwy 18.....	11
7. Approach Rwy 36.....	12
8. 30 Km Obstruction Map.....	13
9. Inner Horizontal Surface Superimposed On Google Earth...14	

ABOUT THE CITY AND AIRPORT CONNECTIVITY**NAME OF THE AIRPORT (STATE) : RAIRANGPUR , ODISHA STATE****(A) ABOUT THE CITY :****(I) INTRODUCTION :**

Rairangpur is a city and a Municipality in Mayurbhanj district in the state of Odisha, India. It is situated at about 85 kilometres from district headquarters of Baripada and about 80 km away from Jamshedpur (Tata Nagar).

The Khadkhai (Sulaipat) Dam is a local attraction nearby and Simlipal National Park is in the approachable distance attracting many foreign tourists.

This is a notable mining area of Odisha. Gorumahisani, Badampahar, Sulaipat are rich iron-ore mines of this place.

(II) ABOUT THE DISTRICT POPULATION, ECONOMY, INDUSTRY & TOURISM POTENTIAL :**POPULATION :**

According to 2011 census the population of Mayurbhang district is 18,02,777.

ECONOMY :

Rairangpur acts as a liaison centre between Jamshedpur (Tata nagar) in Jharkhand, Durgapur in West Bengal and the Iron Ore Mines in Gorumahisani, Badampahar and Suleipat. The steel factories of Tata and the surrounding area partly rely on the iron ores extracted from these mines. In addition to freight trains there is also a passenger train from Jamshedpur to Badampahar via Rairangpur.

Rairangpur is surrounded by hills which are rich in iron ore mineral. The first iron ore mines of Asia were in Gorumahisani, Suleipat and Badampahar (mother mines of Tata Steel) are located here. The first ever trial for setting up of a Ferro Vanadium Plant was made by Mayurbhanj Maharaja during pre-independence days. Currently, thousands of tons of iron ore are exported out of the state on daily basis.

The majority of the population is dependent on the paddy harvesting (farming) as either their main source or as an alternate source of income. The direct and indirect dependency of the economy of this tiny place is largely influenced by the paddy harvesting. The same is again largely dependent on the annual rain fall during May–September. The Kharakhai (Suleipat) dam and Bankbad dam irrigate some of the cultivating lands and helps for the Khariff harvesting.

INDUSTRY :

Rairangpur has the oldest and the largest Sal Oil Extraction Plant which is closed since years. Sal seed is locally collected from the forest. The area suffers due to less attention in the political

environment with few resources and funds allocated to it from government or private sources.

There is one industrial estate and some industries are operating in this area, Due to the locational advantage with good connectivity to Jamshedpur, Durgapur, Kolkata, Bhubaneswar, Rourkela, Keonjhar, Baripada by road. Ample amount of natural resources, good and hardworking people, least effected due to any kind of natural calamities.

TOURISM POTENTIAL :

- i) Wild life Sanctuary - 40 Km
- ii) Crocodile Bank - 24 km
- iii) Kitchery Temple - 71 km
- iv) Cricket is the most widely played sport in the city. Various teams across each locality. Rairangpur Premier League (RPL) which is held every year at stadium near Kacheri Market.
- v) Sports organised by various village Youth associations just after Makarsankranti is one of the age old sports activity promoting youth athletes with very colourful and festive events during January & February every year.

(III) PROVIDE TRANSPORT FACILITIES AND CONNECTIVITY BY RAIL, ROAD & AIR AS PER TABLE MENTIONED BELOW :

Name & Distance Between Airport To Nearest City Centre	Name & Distance Between Airport To Nearest Railway Station	Name & Distance Between Airport To National Highway	Name & Distance Between Airport To Nearest State Highway	Details Of Connecting Road To Nearest National / State Highway		Aerial And Surface Distance From Nearby Airport/S	Industrial / tourists religious places of interest around the city with distance
				ROW	WIDTH		
Rairangpur City Centre 06 km	Rairangpur Railway Station 08 km	NH 6 35 km NH 220 1.8 km	State highway converted to NH 220 1.8km	Single lane	3.66 m	Ranchi Airport 70 NM / 140 km Jamshedpur Airport 26 NM / 48 km	Crocodile Park 24 km Wild life sanctuary 40 km Kitchary temple 71 km

TECHNICAL DETAIL ABOUT THE AIRPORT/AIRSTRIP**NAME OF THE AIRPORT (STATE) : RAIRANGPUR, ODISHA STATE****ABOUT THE AIRPORT :**

(A) GENERAL INFORMATION	
1	AIRPORT OWNER / OPERATOR State Govt. Contact: Rajesh Prabhakar Patil, DM Tel: 06792-252606 Email: dm-mayurbhanj@nic.in
2	STATE Odisha
3	ICAO/IATA CODE Not Available
4	LOCATION OF THE CITY WITH APPROPRIATE LANDMARK. 8 Km from Jagganath temple
5	LATITUDE/LONGITUDE OF AERODROME REFERENCE POINT (ARP-WGS 84) 22°18'18.44" N, 86°08'07.70" E AMSL- 260m
6	SUITABILITY OF AIRPORT Suitable for small aircraft and Helicopter operations.
7	DOMESTIC OPERATIONS No Operations
8	ATC WATCH HOURS (IST) Not Available
9	ADMINISTRATION State Govt.
10	OTHER AIRPORTS WITHIN 150 Km RADIUS IN THE VICINITY. Sonari Airport - 71 Km
11	STATUS OF AIRPORT LICENSE Not Available

(B) AIRPORT LAND & UTILIZATION	
12	TOTAL LAND AREA AVAILABLE 60.88 Acres
13	AVAILABLE LAND ON AIRSIDE
	i PRESENT IN USE (operational area) 60.88 Acres
	ii FOR FUTURE DEVELOPMENT As per State Govt. PWD, the airfield expansion can be done towards Rwy 36 (N) side by 400 m Approach road between NH – 220 to airport is single lane which can be upgraded to double lane.
14	AVAILABLE LAND ON CITY SIDE
	i PRESENT IN USE Nil
	ii FOR FUTURE DEVELOPMENT Nil
	iii RESIDENTIAL AREA Nil
15	STATUS OF LAND (LEASE/LICENSE ETC.) State Govt. land

16	ADDL. LAND REQUIREMENT PROJECTED TO STATE GOVT.		
	i	LAND COMMERCIAL DEVELOPMENT	36 Acres of land has been projected for acquisition by PWD
	ii	LAND FOR SOLAR PANEL	Nil

(C) TECHNICAL INFORMATION		
AERODROME DATA(AIR SIDE)		
17	AERODROME ELEVATION/ REFERENCE TEMPERATURE	260m / 43°C
18	AERODROME REFERENCE CODE (ARC)	2 A
19	AERODROME TRAFFIC DENSITY	Nil
20	TYPE OF TRAFFIC PERMITTED	State Govt. / Private small aircraft can be operated like King Air B -200
21	AERODROME RESCUE & FIRE FIGHTING CATEGORY (ARFF)	Not Available
22	ISOLATION BAY (DIMENSION)	Not Available
23	WIND SOCK	Not Available

(D) MOVEMENT AREA FACILITIES (AIR SIDE)		
RUNWAYS		
24	RUNWAY ORIENTATION	178°/358°
25	RUNWAY DESIGNATION /DIMENSION	18/36 880 m x 15.25 m
	RWY SLOPE	0.57%
26	DIMENSION OF RUNWAY STRIP	1000 m x 80 m
27	RUNWAYS STRENGTH (PCN)	WBM - 06" Bitumen - 03" Morrum - 01" Total thickness = 10"
28	RUNWAY SHOULDERS	Nil
29	LOCATION OF THRESHOLD	Rwy 36 side
30	STOPWAY/ BLAST PAD (SWY/BP)	Not Available
31	TURN PADS	Not Available
32	SIZE OF RESA ON BOTH ENDS OF RUNWAY	Not Available

(E) DECLARED DISTANCE (IN METER), if any						
		RWY	TORA	TODA	ASDA	LDA
33	RWY	18	880 m	880 m	880 m	880 m
34	RWY	36	880 m	880 m	880 m	880 m

(F)	TAXIWAYS	
35	TWY DIMENSION /LOCATION	Not Available
36	BEARING STRENGTH IN-PCN	Not Applicable
37	SHOULDERS WIDTH(ASPHALT CONCRETE)	Not Applicable

(G)	APRON	
38	DIMENSION/AREA(IN SQ M)	Not Available
39	CAPACITY	Not Applicable
40	BEARING STRENGTH (PCN)	Not Applicable

(H)	HANGARS WITH ASSOCIATED INFRASTRUCTURE	
41	NON-AAI	Nil

(I)	AIRPORT GROUND LIGHTING SYSTEM	
42	PROVIDE COMPLETE DETAIL OF LIGHTING SYSTEM AT THE AIRPORT	
a	RWY/ TWY/ TURNPAD/ APRON EDGE LIGHTS	Nil
b	PRECISION APPROACH PATH INDICATOR (PAPI)	Nil
c	APPROACH LIGHTING SYSTEM (ALS)	Nil
d	APRON FLOOD LIGHT	Nil
e	AERODROME BEACON	Nil
f	ISOLATION BAY LIGHTING	Nil
g	OBSTRUCTION LIGHT	Nil
h	LIGHTED LANDING 'T'/ WDI	Nil
i	MARKINGS	Nil

(J)	COMMUNICATION, NAVIGATIONAL & SURVEILLANCE AIDS	
43	PROVIDE COMPLETE DETAIL OF COMMUNICATION, NAVIGATIONAL & SURVEILLANCE OF THE AIRPORT	
a	AIR-TO- GROUND COMMUNICATION –VHF	Nil
b	GROUND-TO-GROUND COMMUNICATION HF /DVTRS/ HHRT/ MASTER CLOCK SYSTEM/ ATIS/DIAL-UP (AFTN) /DSCN/VPN/ AMSS/VCCS & LAN/WAN	Nil
c	NDB/ DVOR/ DME (HIGH POWER)	Nil
d	ILS/DME (LOW POWER) (LLZ/GP)	Nil

(K) AVIATION REFUELLING SERVICES FACILITY		
44	CATEGORY	Nil
45	EQUIPMENTS	Nil
46	AGENCY PROVIDING FUEL	Nil

(L) PASSENGER FACILITY INFORMATION			
		DOMESTIC SIDE	INTERNATIONAL SIDE
47	TERMINAL BUILDING BUILT UP AREA (IN SQ M)	Small rest house 21 m x 08 m = 168 Sq. m	Nil
48	ANNUAL DESIGN CAPACITY (MPPA)	Not Available	Nil
49	PASSENGER FACILITATION		
	i (Provide details of all passengers Facilities)	Not Available	Nil

(M) SECURITY AND SAFETY FACILITY		
a	PERIMETER BOUNDARY WALL/ FENCE (LENGTH/ HEIGHT IN M)	1.8 m height brick wall, Length – 3270 m
b	PERIMETER ROAD (LENGTH/ WIDTH)	Not Available
c	SECURITY GATES/ WATCH TOWER	Not Available
d	FIRE STATION/ MT WORKSHOP	Not Available

(N) OTHER BUILDING INCLUDING MONUMENTS		
50	OTHER BUILDINGS	Not Available
51	RELIGIOUS MONUMENTS, IF ANY	Not Available
52	RESIDENTIAL BUILDING / AREA	Not Available

(O) AIRPORT SERVICES		
53	FIRE FIGHTING SYSTEM	City fire service
54	WATER SUPPLY SYSTEM	Bore well available
55	RAIN WATER DISPOSAL SYSTEM	Natural disposal
56	SEWAGE DISPOSAL SYSTEM	No Arrangement
57	SOLID WASTE MANAGEMENT SYSTEM	No Arrangement
58	POWER SUPPLY SYSTEM	Not Available
59	ELECTRO MECHANICAL SYSTEM	Not Available
60	APPROACH ROAD / EXIT ROAD	Available, Width – 3.5 m
	i DETAILS (INCLUDING FLYOVER,) UNDERPASSES ETC.)	Nil

(P)	ANNUAL TRAFFIC MOEMENT	2012-13		2013-14		2014-15	
		DOM	INTL	DOM	INTL	DOM	INTL
61	AIRCRAFT MOVEMENT	Nil	Nil	Nil	Nil	Nil	Nil
62	PASSENGERS	Nil	Nil	Nil	Nil	Nil	Nil
63	CARGO (IN TONNES)	Nil	Nil	Nil	Nil	Nil	Nil

(Q)	MAJOR DEVELOPMENT WORKS STATUS	COST (Rs in Cr)	DOC	PDC	ADC
		Nil	Nil	Nil	Nil
WORKS COMPLETED DURING LAST THREE YEARS					
64	ON-GOING WORKS	Compound wall fencing under construction Cost – Not Known			
65	PROPOSED WORKS	Acquisition of land under process for expansion of runway Cost – Not Known			

(R)	FUTURE DEVELOPMENT WORKS	
66	CONDITIONS OF EXISTING FACILITIES	Satisfactory
67	OBSTRUCTION DETAILS	No obstruction
68	GENERAL CONDITIONS OF THE PAVED SURFACE AND OTHER INFRASTRUCTURES	Satisfactory.

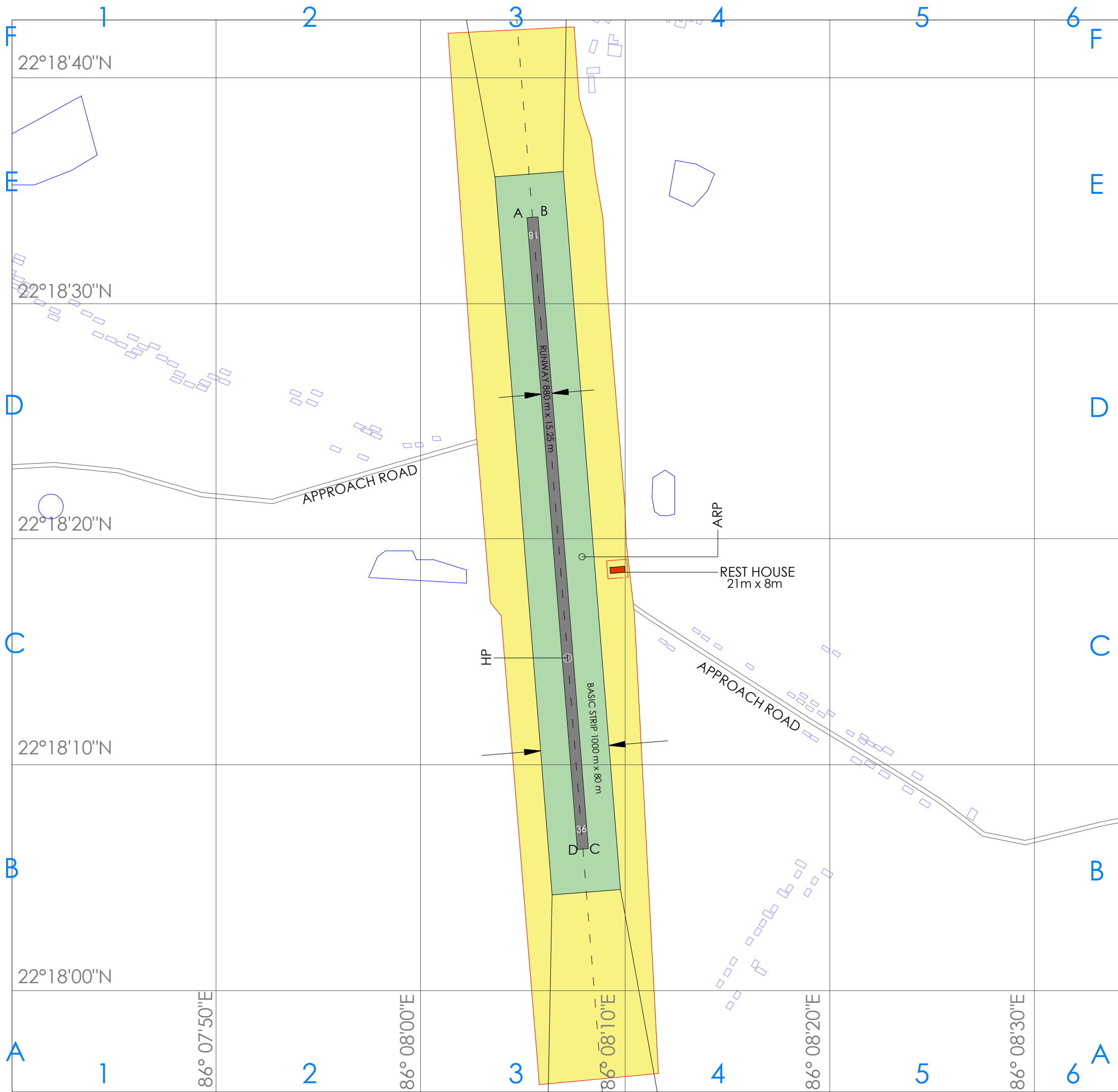
(S)	RECOMMENDATION FOR SUITABILITY OF AIRPORT / AIRSTRIP
69	It is suitable for operation of small aircraft like King Air, B - 200 and helicopters.

RAIRANGPUR GOOGLE EARTH PICTURES



RAIRANGPUR SITE PHOTOGRAPHS





COORDINATES & ELEVATION		
A	22°18'33.94"N 86°08'05.12"E	260
B	22°18'33.97"N 86°08'05.60"E	261
C	22°18'5.22"N 86°08'08.08"E	264
D	22°18'5.18"N 86°08'07.57"E	263
HP	22°18'13.75"N 86°08'07.04"E	261

0m	SCALE
100m	
200m	
300m	

NOTES

- All the elevations are in "m" (metres) AMSL (above mean sea level).
- All coordinates/elevation of airport is taken with GARMIN eTrex 30 GPS.
- Coordinates/elevations of structures/topographical points outside the airport are obtained from Google Earth Pro.

RAIRANGPUR

ARP	260m AMSL
22°18'18.44"N	86°08'07.70"E

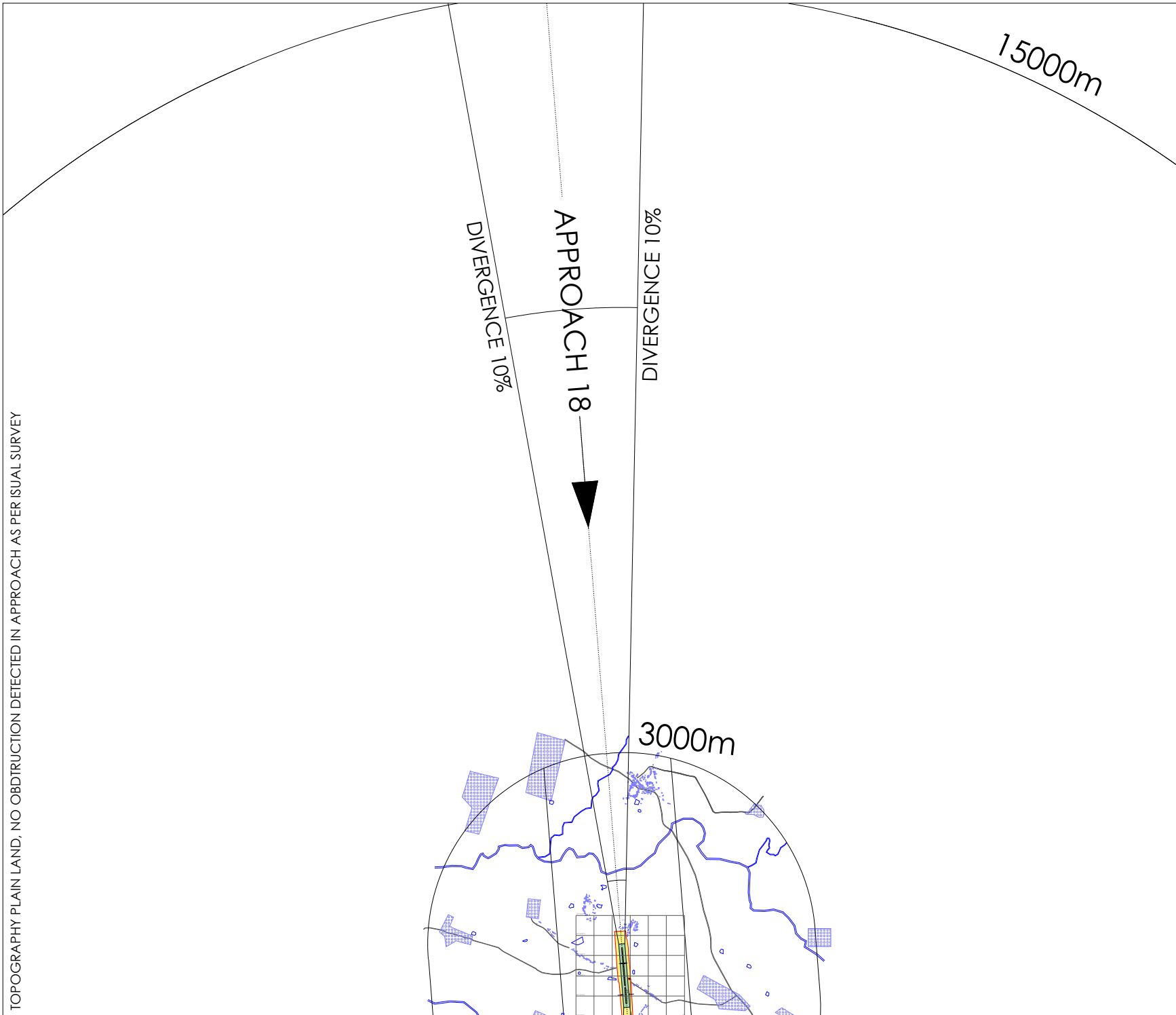
LEGEND	
	PAVEMENT
	BASIC STRIP
	AERODROME LAND
	METALLED ROAD
	RIVER/WATERBODY
	PERIMETER WALL
	BUILDINGS
	GRID

NOTES

- All Dimensions are in Metres.
- All coordinates are in WGS-84.
- All bearing are True Bearing.
- Some of the data is taken with the help of Google Earth Pro.

PROJECT TITLE	NATIONAL REGISTER OF AIRPORTS	
DWG TITLE	RAIRANGPUR - GRID MAP	
CLIENT	AIRPORTS AUTHORITY OF INDIA	
CONSULTANTS	INDIA AVIATION CONSULTING & SUPPORT LLP	
DWG NO.	IAC&S/AAI/87RRP(OD)/GM	
DWG BY:	SUMIT KUMAR	
DATE: MAY 16 2016	SIZE: A3	VERSION: 01

TOPOGRAPHY PLAIN LAND, NO OBSTRUCTION DETECTED IN APPROACH AS PER VISUAL SURVEY



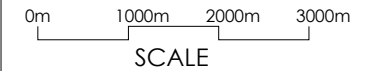
RAIRANGPUR

ARP	260m AMSL
22°18'18.44"N	86°08'07.70"E

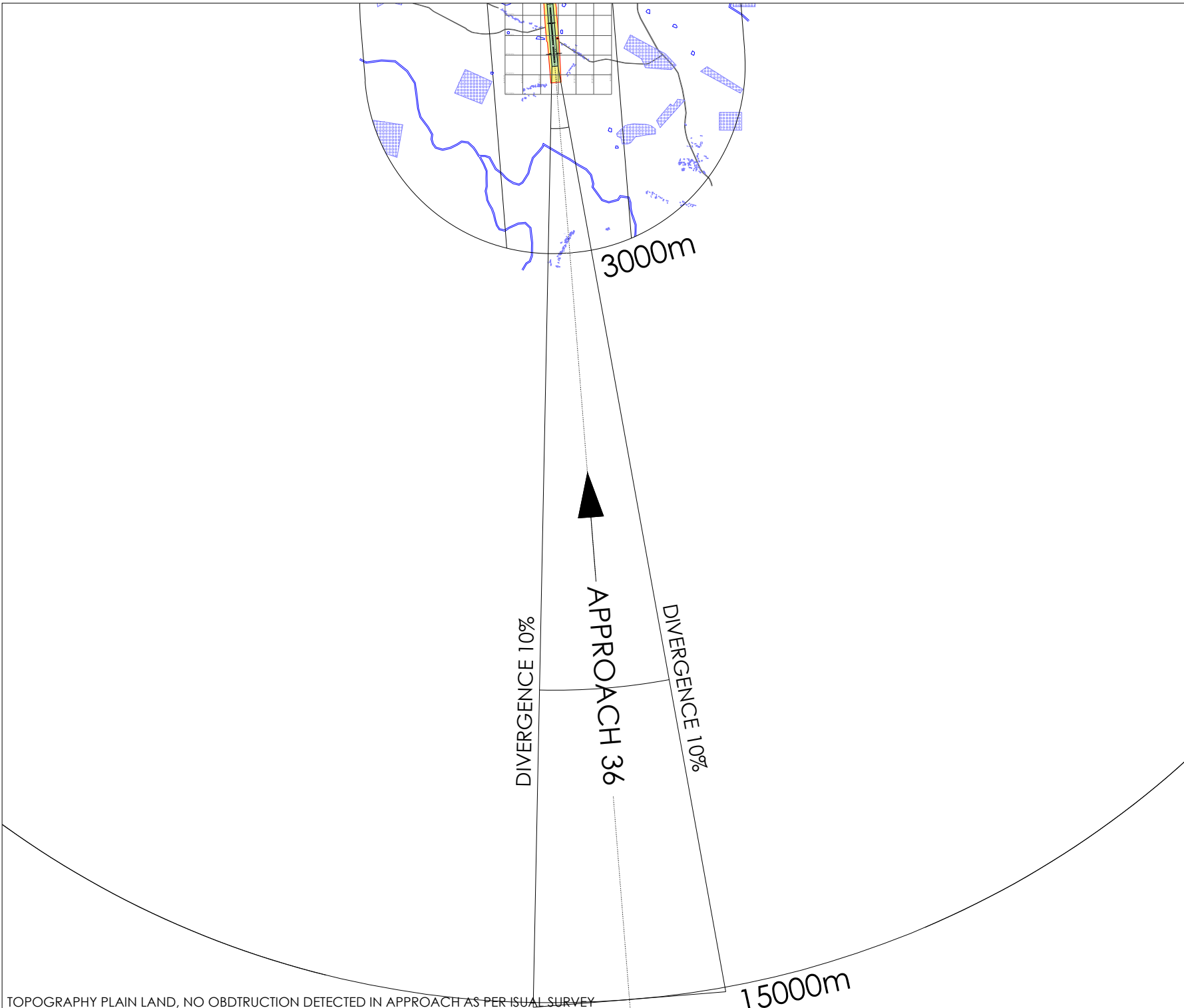
LEGEND	
	PAVEMENT
	BASIC STRIP
	AERODROME LAND
	METALLED ROAD
	RIVER/WATERBODY
	PERIMETER WALL
	BUILDINGS
	GRID

NOTES

1. All Dimensions are in Metres.
2. All coordinates are in WGS-84.
3. All bearing are True Bearing.
4. Some of the data is taken with the help of Google Earth Pro.



PROJECT TITLE	NATIONAL REGISTER OF AIRPORTS		
DWG TITLE	RAIRANGPUR - APPROACH TO RUNWAY 18		
CLIENT	AIRPORTS AUTHORITY OF INDIA		
CONSULTANTS	INDIA AVIATION CONSULTING & SUPPORT LLP		
DWG NO.	IAC&S/AAI/87RRP(OD)/A18		
DWG BY:	SUMIT KUMAR		
DATE:	MAY 16 2016	SIZE:	A3
VERSION:	01		

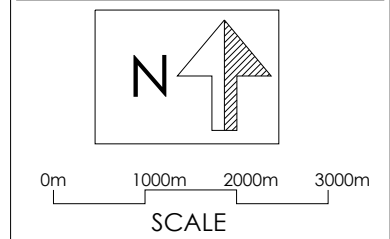


RAIRANGPUR

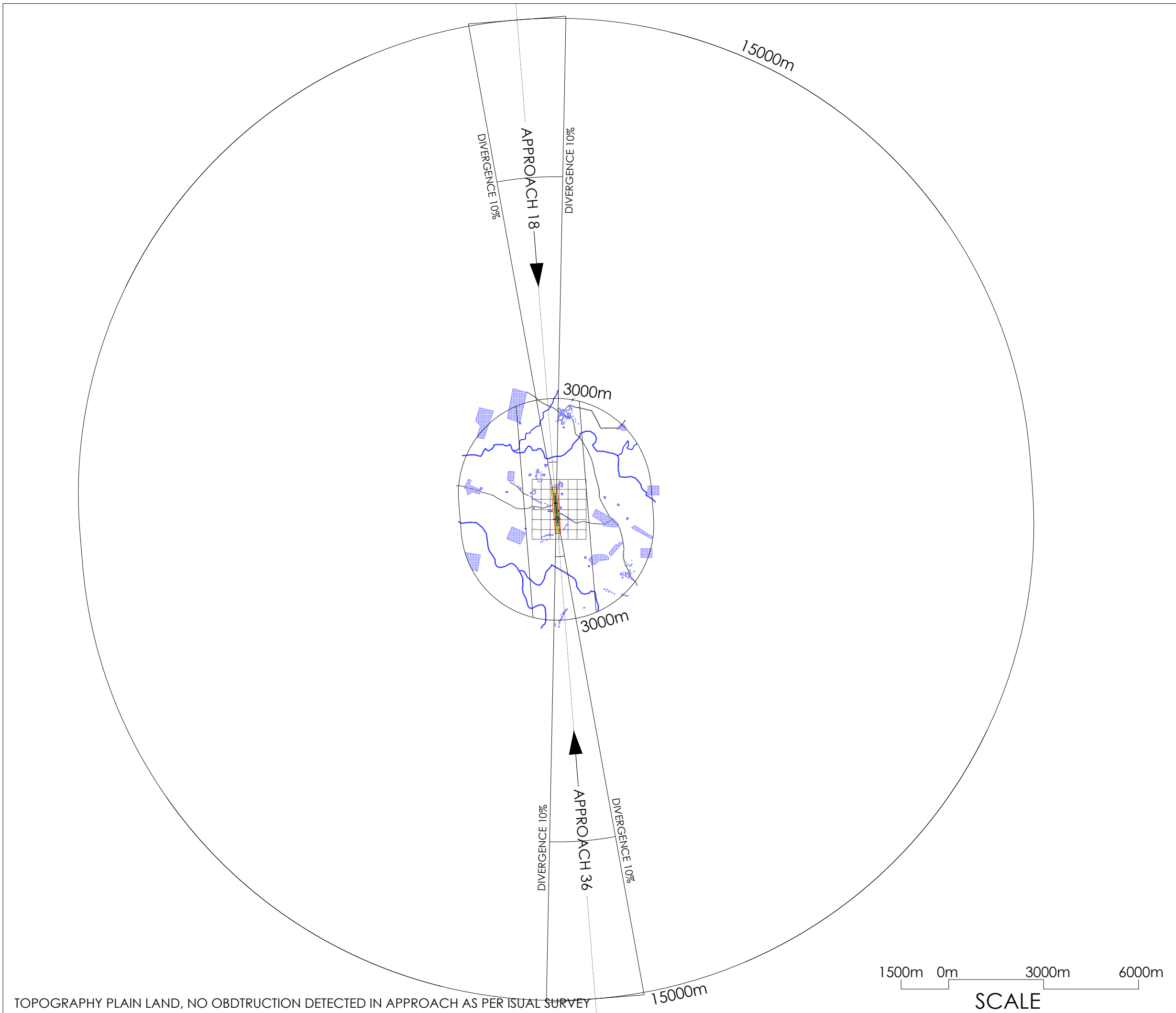
ARP	260m AMSL
22°18'18.44"N	86°08'07.70"E

LEGEND	
	PAVEMENT
	BASIC STRIP
	AERODROME LAND
	METALLED ROAD
	RIVER/WATERBODY
	PERIMETER WALL
	BUILDINGS
	GRID

- NOTES**
1. All Dimensions are in Metres.
 2. All coordinates are in WGS-84.
 3. All bearing are True Bearing.
 4. Some of the data is taken with the help of Google Earth Pro.



PROJECT TITLE		
NATIONAL REGISTER OF AIRPORTS		
DWG TITLE		
RAIRANGPUR - APPROACH TO RUNWAY 36		
CLIENT		
AIRPORTS AUTHORITY OF INDIA		
CONSULTANTS		
INDIA AVIATION CONSULTING & SUPPORT LLP		
india aviation Consulting & Support LLP		
DWG NO.	IAC&S/AAI/87RRP(OD)/A36	
DWG BY:	SUMIT KUMAR	
DATE:	MAY 16 2016	SIZE: A3
VERSION:	01	

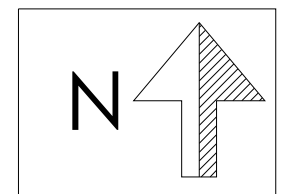


RAIRANGPUR

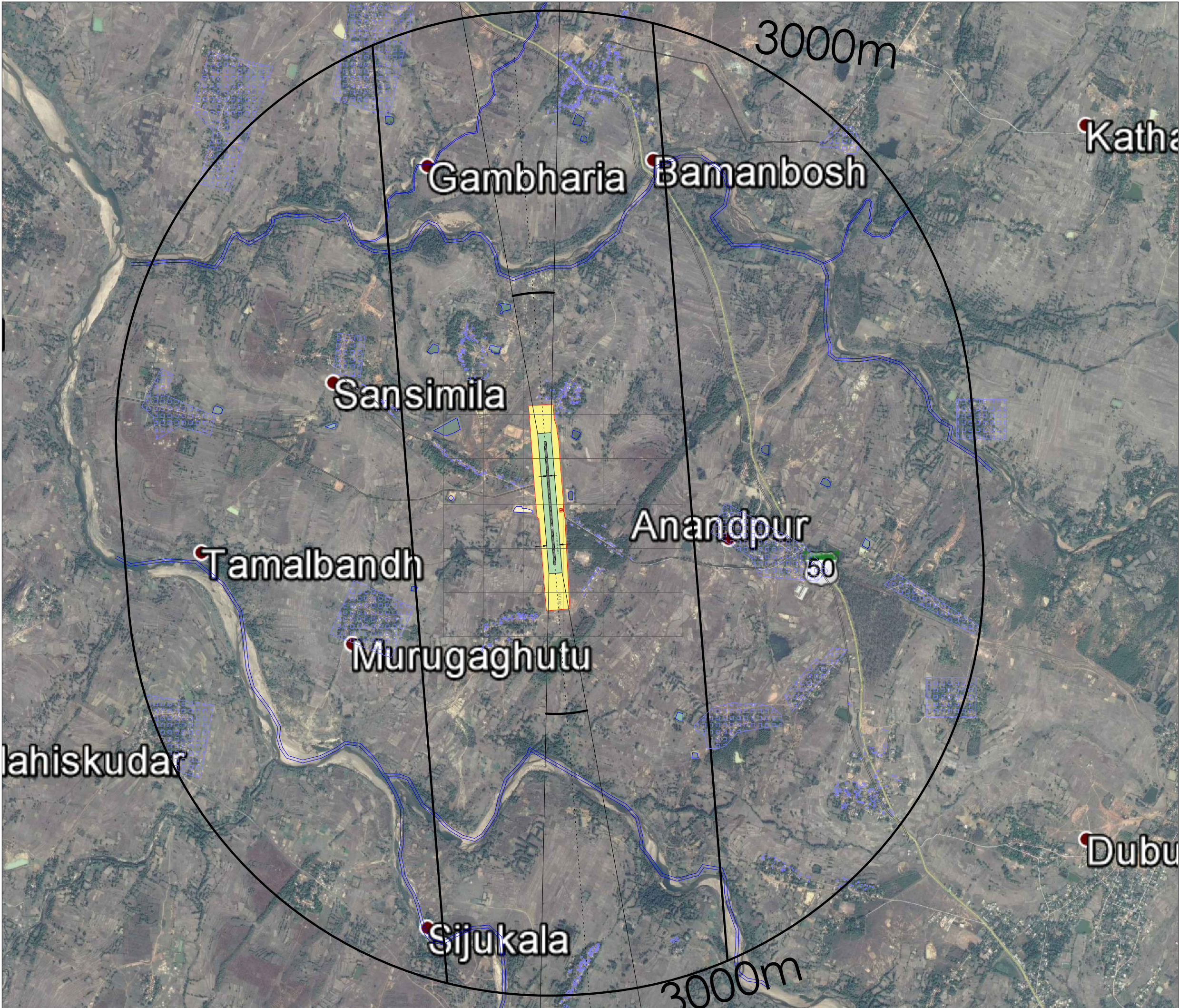
ARP	260m AMSL
22°18'18.44"N	86°08'07.70"E

LEGEND	
	PAVEMENT
	BASIC STRIP
	AERODROME LAND
	METALLED ROAD
	RIVER/WATERBODY
	PERIMETER WALL
	BUILDINGS
	GRID

NOTES	
1.	All Dimensions are in Metres.
2.	All coordinates are in WGS-84.
3.	All bearing are True Bearing.
4.	Some of the data is taken with the help of Google Earth Pro.



PROJECT TITLE	NATIONAL REGISTER OF AIRPORTS		
DWG TITLE	RAIRANGPUR - 30KM OBSTRUCTION MAP		
CLIENT	AIRPORTS AUTHORITY OF INDIA		
CONSULTANTS	INDIA AVIATION CONSULTING & SUPPORT LLP		
DWG NO.	IAC&S/AAI/87RRP(OD)/30KM	DATE:	MAY 16 2016
DWG BY:	SUMIT KUMAR	SIZE:	A3
VERSION:	01	SCALE:	1:1



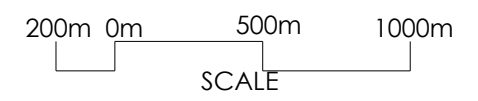
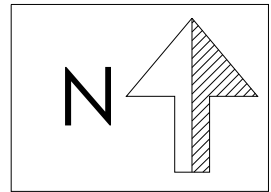
RAIRANGPUR

ARP	260m AMSL
22°18'18.44"N	86°08'07.70"E

LEGEND	
	PAVEMENT
	BASIC STRIP
	AERODROME LAND
	METALLED ROAD
	RIVER/WATERBODY
	PERIMETER WALL
	BUILDINGS
	GRID

NOTES

1. All Dimensions are in Metres.
2. All coordinates are in WGS-84.
3. All bearing are True Bearing.
4. Some of the data is taken with the help of Google Earth Pro.



PROJECT TITLE	NATIONAL REGISTER OF AIRPORTS		
DWG TITLE	RAIRANGPUR - INNER HORIZONTAL SURFACE SUPERIMPOSED ON GOOGLE EARTH		
CLIENT	AIRPORTS AUTHORITY OF INDIA		
CONSULTANTS	INDIA AVIATION CONSULTING & SUPPORT LLP		
DWG NO.	IAC&S/AAI/87RRP(OD)/GE	DATE:	MAY 16 2016
DWG BY:	SUMIT KUMAR	SIZE:	A3
VERSION:	01	DATE:	MAY 16 2016