

Design S8634 Throw



Size: about 47¼" x 63" [120 x 160cm].

Materials: Schachenmayr Northern,

3 balls [300g] each #00830 ecru, #00283 sand, #00881 soapstone and #00550 pewter tweed. US 6-8 [4-5mm] needles, or size to obtain gauge.

Patterns 1 to 12: work foll chart. All sts are given as they appear on RS of work. Read RS rows from right to left, and WS rows from left to right.

Gauge: in the various patterns 17-18 sts and about 26 rows, each to 4" [10cm].

INSTRUCTIONS

The throw comprises 3 panels with 4 squares each (for colors and patts see chart).

For each panel cast on 72 sts in the col of lower square and K 1 WS row.

Start each square with 6 rows garter stitch, then in width work 5 sts garter stitch, rep motif throughout and work foll sts as given in chart, 5 sts garter stitch, end with 6 rows garter stitch. For each increase work M1k tbl; for each decrease K2tog.

Work incs and decs as well as the patt between the garter stitch panels in height as foll:

Panel 1

Square 1: in 6th row garter st inc 3 sts evenly across = 75 sts. In height work rows 1 to 6 of patt 1 16 times = 96 rows. In 1st row garter st dec 3 sts evenly across = 72 sts.

Square 2: in 6th row garter stitch dec 1 st = 71 sts. In height work rows 1 to 12 of patt 2 8 times and rows 1 to 6 once = 102 rows. in 1st row garter stitch inc 1 st = 72 sts.

Square 3: in 6th row garter stitch dec 2 sts = 70 sts. In height work rows 1 to 12 of patt 3 8 times = 96 rows. In 1st row garter st inc 2 sts = 72 sts.

Square 4: in height work rows 1 to 14 of patt 4 once, rows 1 to 8 five times, rows 1 to 14 once, rows 1 to 8 3 times and rows 1 to 4 once = 96 sts.

Panel 2

Square 5: in 6th row garter stitch dec 1 st = 71 sts. In height work rows 1 to 12 of patt 5 8 times and rows 1 to 6 once = 102 rows. In 1st row garter st inc 1 st = 72 sts.

Square 6: in 6th row garter st inc 2 sts = 74 sts. In height work rows 1 to 6 of patt 6 17 times = 102 rows. In 1st row garter stitch dec 2 sts = 72 sts.

Square 7: in 6th row garter stitch dec 2 sts = 70 sts. In height work rows 1 to 6 of patt 7 17 times = 102 rows. In 1st row garter st inc 2 sts = 72 sts.

Square 8: in 6th row garter stitch dec 1 st = 71 sts. In height work rows 1 to 8 of patt 8 12 times and rows 1 to 4 once = 100 rows. In 1st row garter st inc 1 st = 72 sts.

Panel 3

Square 9: in 6th row garter stitch dec 1 st = 71 sts. In height work rows 1 to 4 of patt 9 26 times = 104 rows. In 1st row garter st inc 1 st = 72 sts.

Square 10: in 6th row garter stitch dec 1 st = 71 sts. In height work rows 1 to 6 of patt 10 17 times = 102 rows. In last row garter stitch inc 1 st = 72 sts

Square 11: in height work rows 1 to 12 of patt 11 8 times and 2 rows st-st (= K RS rows; P WS rows) = 98 rows.

Square 12: in height work rows 1 to 4 of patt 12 26 times = 104 rows.

Finishing: block panels to measurements, cover with a damp cloth and allow to dry. Sew panels tog along the long edges in order 1-2-3, ensuring that the col changes meet.

Chart for patterns 1 to 12

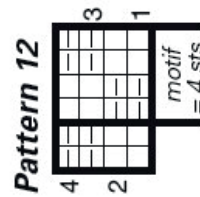
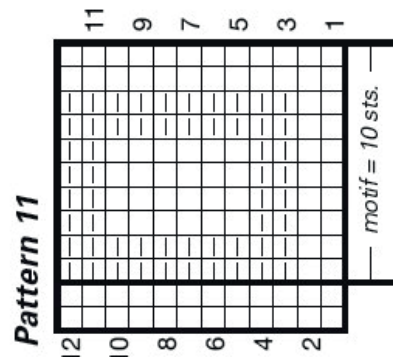
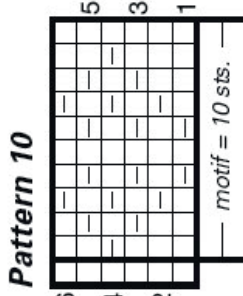
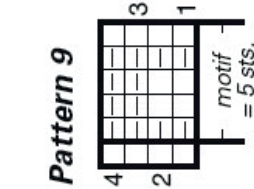
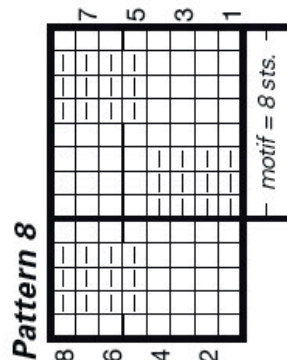
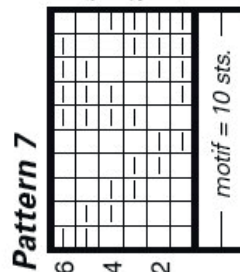
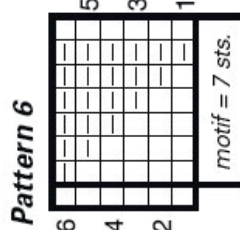
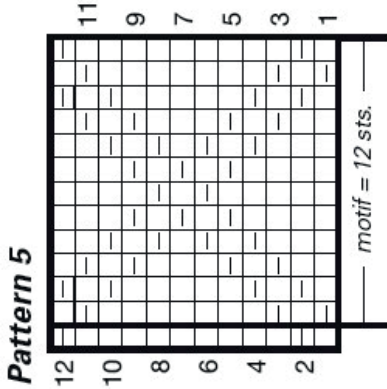
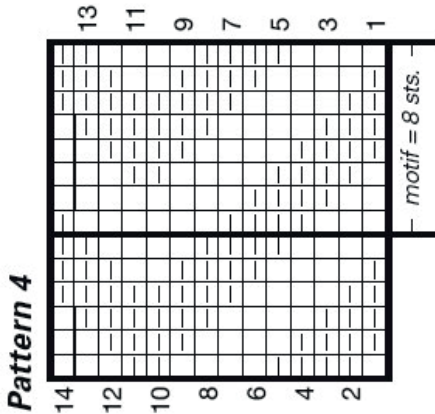
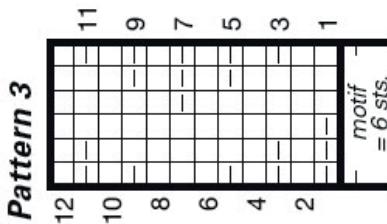
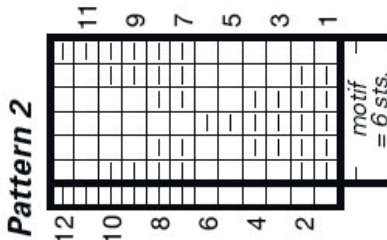
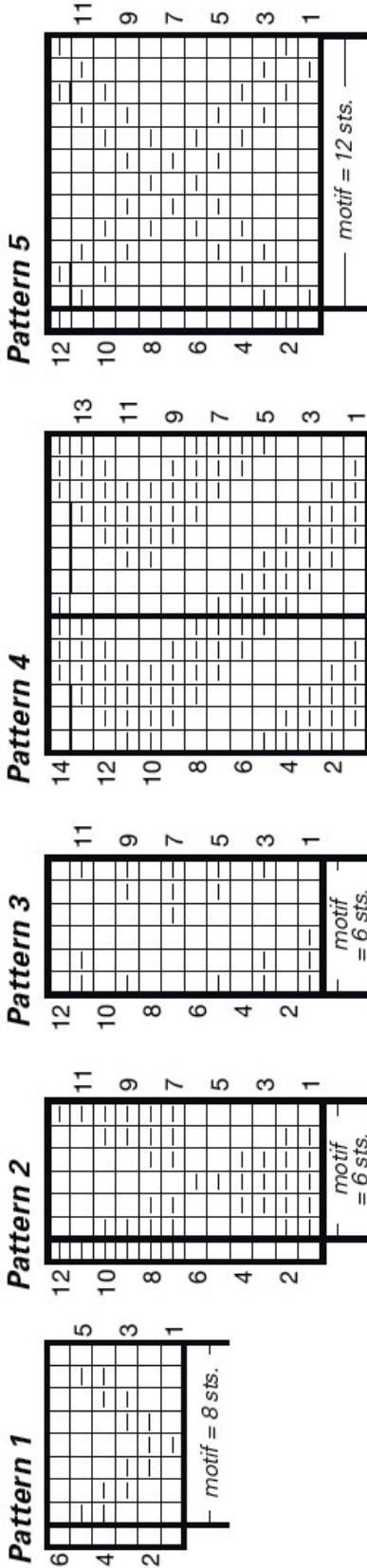
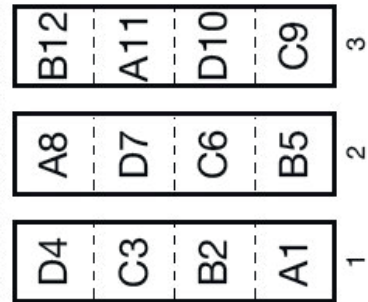


Chart for Colors and Patterns



Legend

- = K1 in RS rows; P1 in WS rows
- ▣ = P1 in RS rows; K1 in WS rows
- A = ecru
- B = sand
- C = pewter tweed
- D = soapstone