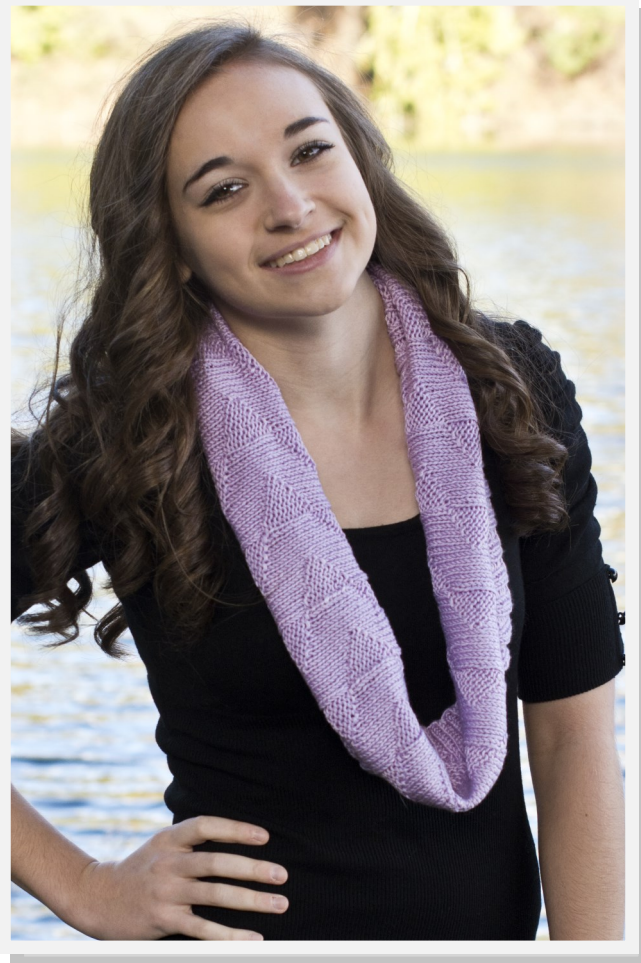




W564

# Sateen Worsted

## Marina Flags



Designed by  
Shannon Thomas



## Sateen Worsted Marina Flags

Designed by Shannon Thomas

From Pier 91 in Seattle, one can see Elliott Bay Marina. The breezes kick up the sailboat flags and in gusty weather, they seem to wave at their appreciative audience.

### Skill Level:

Advanced Beginner

### Skills Needed:

Knit, purl, cast-on, bind off, chart-reading (optional)

### Sizes:

One size fits most  
9" x 32" circumference

### Materials:

Cascade Yarns® Sateen Worsted  
100% Acrylic  
100 g (3.5 oz) / 225 yd (206 m)  
2 skeins in #09 (Lilac)  
1 - US 7 (4.5 mm) Circular Knitting needles  
Stitch markers  
Tapestry needle

### Abbreviations:

CO	= Cast On
BO	= Bind Off
K	= Knit
P	= Purl
Rnd(s)	= Round(s)
St(s)	= Stitch(es)

### Gauge:

20 sts and 6 rows/rnds = 4" (10 cm) in pattern stitch.  
To save time, take time to check gauge.

**Note:** While working the stitch pattern, place a st marker after each 11 sts, thus increasing the visibility of the pattern repeat.

### Marina Flags Stitch Pattern - Written Version (Multiple of 11 sts)

**Round 1:** \*(P1, K10), repeat from \* to end.

**Round 2:** \*(P2, K9), repeat from \* to end.

**Round 3:** \*(P3, K8), repeat from \* to end.

**Round 4:** \*(P4, K7), repeat from \* to end.

**Round 5:** \*(P5, K6), repeat from \* to end.

**Round 6:** \*(P6, K5), repeat from \* to end.

© 2015 Cascade Yarns - All Rights Reserved.



