



2017  
SAMSUN  
XXIII.SUMMER  
DEAFLYMPICS



DEAFLYMPICS  
Recognised by  
International Olympic Committee



## 23.SUMMER DEAFLYMPICS

18-30 JULY 2017

SAMSUN

# BULLETIN 3

### TECHNICAL COMMITTEE:

ICSD Technical Director	: Olga DULA
IOF Event Director	: Veysel GÜLER

### PROTEST COMMITTEE:

ICSD Teknik Direktör (Başkan)	: Olga DULA
IOF Temsilcisi	: Veysel GÜLER

### MAPS&LOCATIONS:

MAPS&LOCATIONS	20 July 2017- MODEL EVENT AND MEETING POINT: ATAKUM YOUTH CENTER <a href="https://goo.gl/maps/HK87PK7F3qB2">https://goo.gl/maps/HK87PK7F3qB2</a>
	21 July 2017- SPRINT:TEKKEKOY <a href="https://goo.gl/maps/wFYhPgYqNAr">https://goo.gl/maps/wFYhPgYqNAr</a>
	23 July 2017- MIX RELAY:CITY CENTER <a href="https://goo.gl/maps/TrxfUUvZwFk">https://goo.gl/maps/TrxfUUvZwFk</a>
	24 July 2017- MIDDLE TRAINING:CATMAOLUK <a href="https://goo.gl/maps/Kg7hDgrSHDs">https://goo.gl/maps/Kg7hDgrSHDs</a>

	<p>25 July 2017 - MIDDLE: BAYRAKTEPE  <a href="https://goo.gl/maps/4QsJHZKRbhF2">https://goo.gl/maps/4QsJHZKRbhF2</a></p> <p>26 July 2017 - LONG TRAINING : KABADUZ (KOCADAG EAST)  <a href="https://goo.gl/maps/dTz61MbTCmu">https://goo.gl/maps/dTz61MbTCmu</a></p> <p>27 July 2017- LONG: KOCADAG WEST  <a href="https://goo.gl/maps/Q3BrfZKbSYR2">https://goo.gl/maps/Q3BrfZKbSYR2</a></p> <p>29 July 2017- RELAY: YENIKOY  <a href="https://goo.gl/maps/ZMrCzj1v9vq">https://goo.gl/maps/ZMrCzj1v9vq</a></p>
COURSE PLANNING	MEHMET KÜÇÜKÇOLAK FIRAT CANIKLI
COURSE CONTROL	İBRAHİM COŞKUN SÜLEYMAN ÖZBEK

#### COURSE DETAILS:



#### 21.07.2017 FRIDAY (SPRINT)

TEKKEKOY

SCALE: 1/4.000

CONTOUR: 2 m.

TIME LIMIT: 45 minute

Mappers: Georgi Hadzhimitev-Valentin  
Garkov-Plamen Kirilov-Petar Doganov-  
Mehmet KÜÇÜKÇOLAK

The terrain is in the accommodation unit with containing inclination. There are confined spaces in the map. To pass/enter these area is reason for disqualification. To wear sprint shoes is recommended.

	LENGT	CP	CLIMB
MAN	3980 m.	20	30
WOMAN	3190 m.	17	20



**23.07.2017 SUNDAY (MIX SPRINT)**  
**CITY CENTER**  
**SCALE:1/4.000**  
**CONTOUR:2 m.**

**TIME LIMIT:180 minutes**

Mappers : Georgi Hadzhimitev- Plamen Kirilov-Petar Doganov

The terrain is in the city center with containing inclination. There are confined spaces in the map. To pass/enter these area is reason for disqualification. To wear sprint

shoes is recommended.

	LENGT	CP	CLIMB
MAN	2700-2900 m.	15	30
WOMAN	3200-3400 m.	17	30



**25.07.2017 TUESDAY (MIDDLE)**  
**BAYRAKTEPE**  
**SCALE:1/10.000**  
**CONTOUR:5 m.**

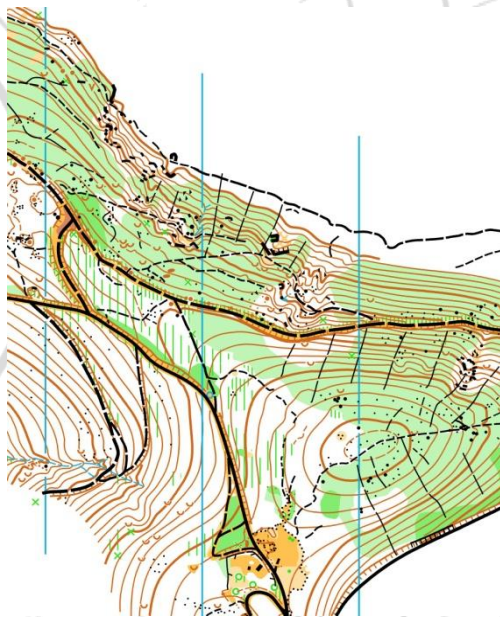
**TIME LIMIT:90 minutes**

Mappers : Georgi Hadzhimitev-Valentin Garkov-Plamen Kirilov-Petar Doganov

The 90% of the terrain is forestland with drastic inclination that is hardly runnable. There exist thickets arena. There are many barely visible tracks. These kinds of paths require attention. Thorns can be seen. To wear long sleeve orienteering clothes and

orienteering shoes are recommended.

	LENGT	CP	CLIMB
MAN	4310 m.	19	240 metre
WOMAN	3350 m.	15	170 metre



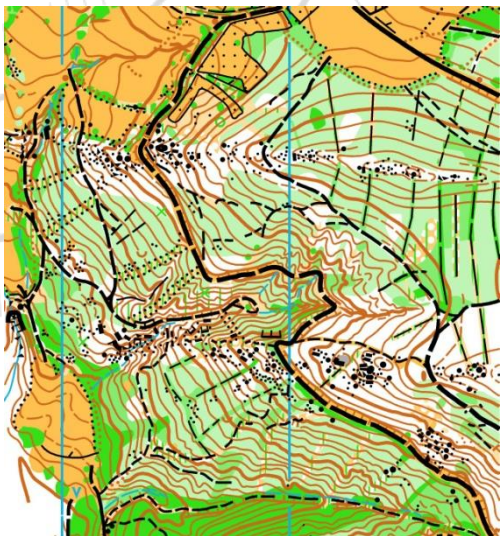
**27.07.2017 THURSDAY ( LONG )  
KOCADAĞ/KABADUZ  
SCALE:1/12.500  
CONTOUR:5 m.  
TIME LIMIT:180 minutes**

Mappers : Georgi Hadzhimitev-Valentin  
Garkov-Plamen Kirilov-Petar Doganov

The 90% of the terrain is forestland with drastic inclination that is hardly runnable. There exist thickets and stony ground in the arena. Thorns can be seen. To wear long sleeve orienteering clothes and orienteering

shoes are recommended.

	LENGT	CP	CLIMB
MAN	8440 m.	22	480
WOMAN	7180 m.	20	345



**29.07.2017 SATURDAY (RELAY)  
YENIKÖY  
SCALE:1/10.000  
CONTOUR:5 m.  
TIME LIMIT:270 minutes**

Mappers : Georgi Hadzhimitev-Valentin  
Garkov-Plamen Kirilov-Petar Doganov

The 95% of the terrain is forestland that is hardly runnable. There exist thickets and stony ground in the arena with drastic inclination. There are many barely visible tracks. These kinds of paths require

attention. Thorns can be seen. To wear long sleeve orienteering clothes and orienteering shoes are recommended.

YENİKÖY	LENGT	CP	CLIMB
MAN	4080 m.	15	260
WOMAN	3120 m.	11	170

**ACCOMMODATION**

CZE	PARK-INN OTEL
CHINA	TURGUT ÖZALYURDU B BLOK
DEN	GRAND ATAKUM OTELİ
EST	NEBA ROYAL HOTEL

<b>SWE</b>	<b>MARİN OTEL</b>
<b>ITA</b>	<b>TURGUT ÖZALYURDU B BLOK</b>
<b>KAZ</b>	<b>MÜNEVVER AYAŞLI F BLOK</b>
<b>LTU</b>	<b>PARK-INN OTEL</b>
<b>HUN</b>	<b>TURGUT ÖZALYURDU B BLOK</b>
<b>RUS</b>	<b>MY HOUSE OTEL</b>
<b>TPE</b>	<b>MÜNEVVER AYAŞLI C BLOK</b>
<b>TUR</b>	<b>SAMSUN KIZ YURDU A-B-C BLOK</b>
<b>UKR</b>	<b>MÜNEVVER AYAŞLI C BLOK</b>

### ANNOUNCEMENTS and OTHER TOPICS

Transportation information will be given at Technical Meeting.

### CONTACT INFORMATION

Turkish Orienteering Federation : +90 312 324 61 66

Fax : +90 312 324 61 88

Email : [info@orienteering.org.tr](mailto:info@orienteering.org.tr)

IOF Event Director : Veysel GÜLER

+90 533 658 35 94, [vguler72@gmail.com](mailto:vguler72@gmail.com)