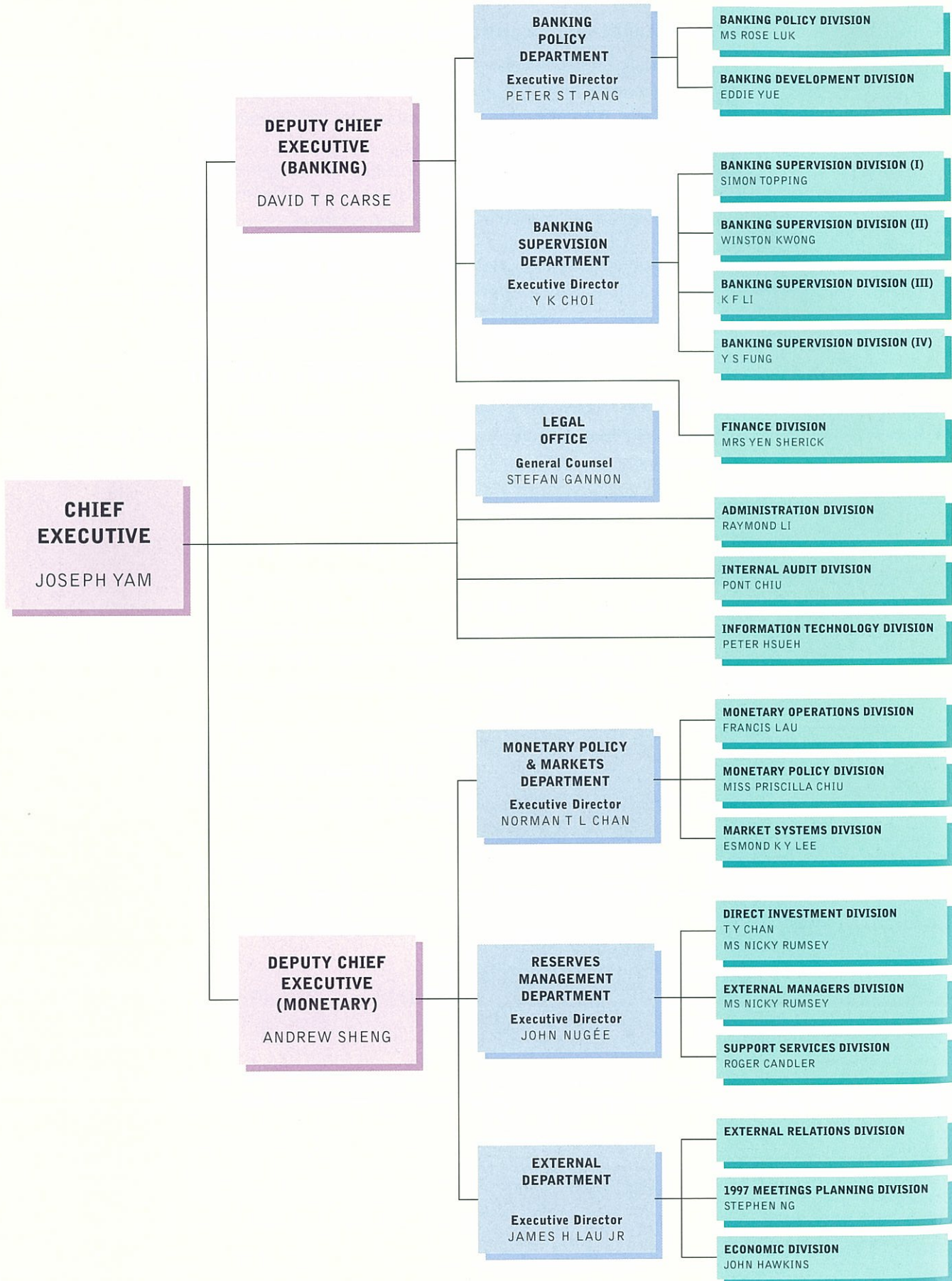


MONETARY AUTHORITY ORGANISATION CHART



ANNEX A: AUTHORISED INSTITUTIONS AND LOCAL REPRESENTATIVE OFFICES

LICENSED BANKS

as at 31.12.95

INCORPORATED IN HONG KONG

Asia Commercial Bank Limited	HSBC Investment Bank Asia Limited	Po Sang Bank Limited
Bank of America (Asia) Limited	Hua Chiao Commercial Bank Limited	Shanghai Commercial Bank Limited
Bank of East Asia, Limited (The)	International Bank of Asia Limited	Tai Sang Bank Limited
Chekiang First Bank Limited	Jardine Fleming Bank Limited	Tai Yau Bank, Limited
Chiyu Banking Corporation Limited	Jian Sing Bank Limited	Union Bank of Hong Kong Limited
Dah Sing Bank Limited	Ka Wah Bank Limited (The)	United Chinese Bank Limited
Dao Heng Bank Limited	Kwong On Bank, Limited	Wayfoong Finance Limited
First Pacific Bank Limited	Liu Chong Hing Bank Limited	Wing Hang Bank, Limited
Hang Seng Bank, Limited	Nanyang Commercial Bank, Limited	Wing Lung Bank Limited
Hongkong Chinese Bank, Limited (The)	Overseas Trust Bank, Limited	Wing On Bank Limited (The)
Hongkong & Shanghai Banking Corporation Limited (The)		

INCORPORATED OUTSIDE HONG KONG

ABN AMRO Bank N.V.	Bank of America NT & SA	Bayerische Hypotheken-und Wechsel-Bank AG
Agricultural Bank of China (The)	Bank of China	Bayerische Landesbank Girozentrale
American Express Bank Limited	Bank of Communications	Bayerische Vereinsbank Aktiengesellschaft
Asahi Bank, Ltd. (The)	Bank of Fukuoka, Ltd. (The)	BHF-Bank Aktiengesellschaft
Australia & New Zealand Banking Group Limited	Bank of India	Canadian Imperial Bank of Commerce
Banca Commerciale Italiana S.p.A.	Bank of Kinki, Ltd.	CARIPL0-Cassa di Risparmio delle Provincie Lombarde S.p.A.
Banca di Roma S.p.A.	Bank of Montreal	Chang Hwa Commercial Bank Ltd.
Banca Nazionale del Lavoro S.p.A.	Bank of New York (The)	Chase Manhattan Bank, N.A. (The)
Banca Nazionale dell'Agricoltura S.p.A.	Bank of Nova Scotia (The)	Chemical Bank
Banco Central Hispanoamericano, S.A.	Bank of Scotland	Chiba Bank, Ltd. (The)
Banco di Napoli S.p.A.	Bank of Taiwan	China State Bank, Ltd. (The)
Banco Exterior de Espana S.A.	Bank of Tokyo, Ltd. (The)	China & South Sea Bank, Ltd. (The)
Banco Santander, S.A.	Bank of Yokohama, Ltd. (The)	Chugoku Bank, Ltd. (The)
Bangkok Bank Public Company Ltd.	Bankers Trust Company	Chung Khiaw Bank Limited
Bank Austria Aktiengesellschaft	Banque Francaise du Commerce Exterieur	Chuo Trust & Banking Co., Ltd.
Bank Brussels Lambert S.A.	Banque Indosuez	Citibank, N.A.
Bank Melll Iran	Banque Nationale de Paris	
	Banque Paribas	
	Banque Worms	
	Barclays Bank plc	

Commerzbank AG	Hua Nan Commercial Bank, Ltd.	P.T. Bank Negara Indonesia (Persero)
Commonwealth Bank of Australia	Hyakujushi Bank, Ltd. (The)	Rabobank Nederland
Coutts & Co AG	Indian Overseas Bank	Republic National Bank of New York
Credit Agricole	Industrial and Commercial Bank of China (The)	Royal Bank of Canada
Credit Commercial de France	Industrial Bank of Japan, Limited (The)	Royal Bank of Scotland plc (The)
Credit Lyonnais	Internationale Nederlanden Bank N.V.	Sakura Bank, Limited (The)
Credit Suisse	Juroku Bank, Ltd. (The)	San-in Godo Bank Ltd. (The)
Creditanstalt-Bankverein	Kincheng Banking Corporation	Sanwa Bank, Limited (The)
Credito Italiano S.p.A.	Korea Exchange Bank	SEOULBANK
Daishi Bank, Ltd. (The)	Kredietbank N.V.	Shiga Bank, Ltd (The)
Daiwa Bank, Limited (The)	Kwangtung Provincial Bank (The)	Shizuoka Bank, Ltd. (The)
Dai-Ichi Kangyo Bank, Limited (The)	Long-Term Credit Bank of Japan, Limited (The)	Sin Hua Bank Limited
Den Danske Bank Aktieselskab	Malayan Banking Berhad	Skandinaviska Enskilda Banken AB (publ)
Deutsche Bank AG	Mitsubishi Bank, Limited. (The)	Societe Generale
Development Bank of Singapore Ltd. (The)	Mitsubishi Trust and Banking Corporation (The)	Standard Chartered Bank
DG Bank - Deutsche Genossenschaftsbank	Mitsui Trust and Banking Co. Ltd. (The)	State Bank of India
Dresdner Bank AG	Morgan Guaranty Trust Company of New York	State Street Bank & Trust Company
Eighteenth Bank, Ltd. (The)	National Australia Bank Limited	Sumitomo Bank, Limited (The)
Equitable Banking Corporation	National Bank of Canada	Sumitomo Trust & Banking Co., Ltd. (The)
First Commercial Bank	National Bank of Pakistan	Suruga Bank, Ltd (The)
First National Bank of Boston (The)	National Commercial Bank, Limited (The)	Svenska Handelsbanken AB (publ)
First National Bank of Chicago (The)	National Westminster Bank plc	Swiss Bank Corporation
Fuji Bank, Limited (The)	NationsBank, National Association (Carolinas) (The)	Tokai Bank, Limited (The)
Fukui Bank, Ltd. (The)	NBD Bank	Tokyo Tomin Bank, Ltd (The)
Fukuoka City Bank, Ltd. (The)	Nippon Credit Bank, Ltd. (The)	Toronto-Dominion Bank (The)
Generale Belgian Bank (Belgian Bank)	Nishi-Nippon Bank, Ltd. (The)	Toyo Trust and Banking Company, Limited
Gunma Bank, Ltd. (The)	Norwest Bank Minnesota, N.A.	UCO Bank
Hachijuni Bank, Ltd (The)	Ogaki Kyoritsu Bank, Ltd. (The)	Unibank A/S
Hamburgische Landesbank Girozentrale	Overseas Union Bank Limited	Union Bank of Switzerland
Hanil Bank	Oversea-Chinese Banking Corporation Limited	United Overseas Bank Ltd.
Hiroshima Bank, Ltd (The)	People's Construction Bank of China (The)	Westdeutsche Landesbank Girozentrale
Hokkaido Takushoku Bank, Limited (The)	Philippine National Bank	Westpac Banking Corporation
Hokkoku Bank, Limited (The)		Yamaguchi Bank, Ltd. (The)
Hokuriku Bank, Ltd. (The)		Yasuda Trust & Banking Company, Limited (The)
		Yien Yieh Commercial Bank, Ltd. (The)

RESTRICTED LICENCE BANKS

INCORPORATED IN HONG KONG

ABSA Asia Limited	DongNam Finance (Hong Kong) Limited	LTCB Asia Limited
Allied Capital Resources Limited	East Asia Finance Company, Limited	Manhattan Card Co. Limited
BA Asia Limited	FNB (Asia) Limited	Mitsubishi Finance (Hong Kong) Limited
BNP International Financial Services (Hong Kong) Limited	Fuji International Finance (HK) Limited	Nedcor Asia Limited
BOT International (HK) Limited	GE Capital Finance Limited	Nomura International (Hong Kong) Limited
Canadian Eastern Finance Limited	Hang Seng Finance Limited	N.M. Rothschild & Sons (Hong Kong) Limited
CCIC Finance Limited	IBJ Asia Limited	ORIX Asia Limited
Chase Manhattan Asia Limited	Indover Asia Limited	Sanwa International Finance Limited
China Development Finance Company (Hong Kong) Limited	Internationale Nederlanden Capital Markets (Hong Kong) Limited	Schroders Asia Limited
Citicorp Commercial Finance (H.K.) Limited	KDB Asia Limited	Shinhan Finance Limited
Citicorp International Limited	Kincheng-Tokyo Finance Company Limited	Societe Generale Asia Limited
Daiwa Securities (H.K.) Ltd.	Lehman Brothers Finance Limited	UBAF (Hong Kong) Limited
DKB Asia Limited		

INCORPORATED OUTSIDE HONG KONG

ANZ Banking Group (New Zealand) Limited	CoreStates Bank, N.A.	P.T. Bank Pembangunan Indonesia (Persero)
Bank Bumiputra Malaysia Berhad	Emirates Bank International Limited	Public Bank Berhad
Bank of Ayudhya Public Company Limited	Hambros Bank Ltd	S.G. Warburg & Co. Limited
Bank of Bermuda, Limited (The)	Hill Samuel Bank Limited	Siam Commercial Bank Public Company Limited (The)
Bank of California, N.A. (The)	Industrial Bank of Korea	Tat Lee Bank Limited
Bank of Hawaii	Keppel Bank of Singapore Ltd	Thai Farmers Bank Public Company Limited (The)
Bank of N.T. Butterfield & Son Limited (The)	Kleinwort Benson Limited	Thai Military Bank Public Company Ltd.(The)
Bankers Trust Australia Limited	KorAm Bank	
Boram Bank	MeesPierson N.V.	
	Pacific Bank, N.A. (The)	

DEPOSIT-TAKING COMPANIES

INCORPORATED IN HONG KONG

Argo Enterprises Company Limited	Cho Hung Finance Limited	Hang Seng Credit Ltd.
Asahi Finance (Hong Kong) Limited	Chung Nan Finance Company Limited	Hanil International Finance Limited
Ashikaga Finance (H.K.) Limited (The)	Chuo Trust Asia Limited	HBZ Finance Limited
Avco Financial Services (Asia) Limited	Commonwealth Finance Corporation Limited	Henderson International Finance Limited
B.N.P. Finance (H.K.) Limited	Corporate Finance (D.T.C.) Limited	Hiroshima Finance (Asia) Limited
BA Finance (Hong Kong) Limited	Cosmos Finance Limited	Hocomban Finance Limited
Bali International Finance Limited	Credit Agricole (Hong Kong) Limited	Hokkaido International Finance (Asia) Limited
BCOM Finance (Hong Kong) Limited	Credit Lyonnais Hongkong (Finance) Limited	Hokuriku Finance (H.K.) Limited
BDNI Finance Limited	Dah Sing Finance Limited	Hung Kai Finance Company Limited
BEII (DTC) Limited	Daiwa Overseas Finance Limited	Hyakujushi Finance (Hong Kong) Limited
BII Finance Company Limited	Danamon Finance Company (Hong Kong) Limited	IBA Credit Limited
BNS International (Hong Kong) Limited	Dao Heng Finance Limited	IBU International Finance Limited
BPI International Finance Limited	Delta Asia Credit Limited	Inchroy Credit Corporation Limited
BRI Finance Limited	Dharmala International Finance Limited	Indo Hongkong International Finance Limited
BT Asia Limited	Duta International Finance Company Limited	Iyo Finance (Hong Kong) Limited
BT Asia Securities Limited	East Asia Credit Company Limited	Jardine Fleming (Capital) Limited
Bumi Daya International Finance Limited	Edward Wong Credit Limited	JCG Finance Company, Limited
C.F. Finance Company Limited	First Metro International Investment Company Limited	Juroku International Finance Limited
Canton Pacific Finance Limited	First Union HKCB Asia Limited	Ka Wah International Merchant Finance Limited
Central Asia Capital Corporation Limited	Five Rams Finance Company Limited	KEB (Asia) Finance Limited
Charoen Pokphand Finance Company Limited	Fukuoka City Finance Limited	Kexim Asia Limited
Chau's Brothers Finance Company Limited	Fukuoka Finance International Limited	Kincheng Finance (H.K.) Limited
Che Hsing Finance Company Limited	Gunma Finance (Hong Kong) Limited	KLB Asia Finance Limited
Chemical Securities Asia Limited	Habib Finance International Limited	Korea Commercial Finance Limited
Chiao Yue Finance Company Limited	Hachijuni Asia Limited	Korea First Finance Limited
China State Finance Company, Limited (The)	Hamburg LB International Limited	Korea-Japan Finance Company Limited
Chiyu Finance Company Limited	Hana Finance Asia Limited	Kwong On Finance Ltd.
		Kyoto International Finance (Hong Kong) Limited
		Liu Chong Hing Finance Limited

Michinoku Finance (Hong Kong) Limited	Paribas Asia Limited	Takugin International (Asia) Limited
Mitsubishi Trust Finance (Asia) Limited	Philtrust Finance Limited	Tokyo Tomin Finance (Hong Kong) Limited
Mitsui Trust Finance (Hong Kong) Limited	PNB International Finance Limited	Toyo Trust Asia Limited
Nanyang Finance Company, Limited	Po Fung Finance Company Limited	Union Finance Limited
Niaga Finance Company Limited	RCBC International Finance Limited	Vietnam Finance Company Limited
Nikko Securities Co. (Asia) Limited (The)	Sakura Finance Hongkong Limited	Wayfoong Credit Limited
Nippon Credit International (Hong Kong) Ltd.	Seoul (Asia) Finance Limited	W.I. Carr Indosuez Capital Asia Limited
Nishi-Nippon Finance (Hong Kong) Limited	Shacom Finance Limited	Wing Hang Finance Company Limited
Oakreed Financial Services Limited	Shizuoka Finance (H.K.) Limited	Wing Lung Finance Limited
OCBC Finance (Hong Kong) Limited	Sin Hua Finance Company Limited	Wing On Finance Company Limited (The)
Oman International Finance Limited	S.P.C. Credit Limited	Xiamen International Finance Company Limited
Orient First Capital Limited	Staco International Finance Limited	Yamaichi International (H.K.) Limited
O.T.B. Card Company Limited	Standard Chartered Finance Limited	Yasuda Trust Asia Pacific Limited
OUB Finance (H.K.) Limited	Standard Chartered International Limited	Yien Yieh Finance Company Ltd. (The)
	Standard London (Asia) Limited	Yokohama Asia Limited
	Sumitomo Trust Finance (H.K.) Limited (The)	
	Sun Tai Cheung Finance Company Limited	

INCORPORATED OUTSIDE HONG KONG

Sakura Finance Asia Limited

Sumitomo Finance (Asia) Limited

Tokai Asia Limited

LOCAL REPRESENTATIVE OFFICES

Abbey National Treasury Services plc*	Banco Bamerindus do Brasil S.A.	Cassa di Risparmio di Verona, Vicenza, Belluno e Ancona S.p.A.
Advance Bank Australia Limited	Banco do Brasil S.A.	Cathay Bank
Aichi Bank Ltd. (The)	Banco Nacional Ultramarino	Cedel Bank
ANZ Grindlays Bank plc	Banco S. Geminiano e S. Prospero S.p.A.	China International Trust and Investment Corporation
Aomori Bank, Ltd. (The)	Banco Santander (Suisse) S.A.	China Merchants Bank
Arab Banking Corporation	Banco Sud Americano	Chinatrust Commercial Bank
Ashikaga Bank, Ltd. (The)	Bangkok Metropolitan Bank Public Company Ltd.	Cho Hung Bank
Asian Banking Corporation	Bank Hapoalim B.M.	Chukyo Bank, Limited (The)
Awa Bank, Ltd. (The)	Bank in Liechtenstein AG	Clariden Bank
Baden-Wuerttembergische Bank AG	Bank Julius Baer & Co. Ltd.	Compagnie Financiere de CIC et de L'Union Europeenne
Banca Agricola Mantovana Soc. Coop. a r.l.	Bank Leu Ltd.	Cooperbanca S.p.A.
Banca Antoniana Popolare Coop. a r.l. p.a.	Bank Leumi Le-Israel B.M.	Daegu Bank Ltd.(The)
Banca Cassa di Risparmio di Torino S.p.A.	Bank of Ikeda, Ltd. (The)	Darier, Hentsch & Cie
Banca Popolare Commercio e Industria Soc. Coop. a r.l.	Bank of Iwate, Ltd. (The)	Donghwa Bank
Banca Popolare dell'Emilia Romagna Soc. Coop. a r.l.	Bank of Kyoto, Ltd. (The)	Ehime Bank, Ltd. (The)
Banca Popolare di Ancona Soc. Coop. a r.l.	Bank of New York - Inter Maritime Bank, Geneva	Export-Import Bank of Japan (The)
Banca Popolare di Bergamo-Credito Varesino Soc. Coop. a r.l.	Bank of Saga Ltd. (The)	Export-Import Bank of Korea (The)
Banca Popolare di Crema Soc. Coop. a r.l.	Bank of Scotland (Jersey) Limited	Ferrier Lullin & Cie S.A.
Banca Popolare di Cremona Soc. Coop. a r.l.	Banque Cantonale Vaudoise	Fiduciary Trust Company International
Banca Popolare di Lodi Soc. Coop. a r.l.	Banque Generale du Luxembourg S.A.	First National Bank of Southern Africa Limited
Banca Popolare di Ravenna S.p.A.	Banque Generale du Luxembourg (Suisse) S.A.	Fransabank S.A.L.
Banca Popolare di Sondrio Soc. Coop. a r.l.	Banque Internationale A Luxembourg S.A.	Generale Bank SA/NV
Banca Popolare di Verona Soc. Coop. a r.l.	Banque Privee Edmond de Rothschild S.A.	GiroCredit Bank AG der Sparkassen
Banca Popolare Veneta Soc. Coop. a r.l.	Berliner Bank Aktiengesellschaft	Guangdong Development Bank*
Banca Popolare Vicentina Soc. Coop. a r.l.	Bristol & West International Limited	Guyertzeller Bank AG
Banca S. Paolo-Brescia	BSI-Banca della Svizzera Italiana	Habib Bank A.G. Zurich
Banco Ambrosiano Veneto	Caisse Centrale des Banques Populaires	Handelsfinanz-CCF Bank
Banco Atlantico S.A.	Cassa di Risparmio di Firenze S.p.A.	Hokkaido Bank, Ltd. (The)
	Cassa di Risparmio di Pisa S.p.A.	Hokuetsu Bank, Ltd. (The)
	Cassa di Risparmio di Pistoia e Pescia S.p.A.	Hongkong Bank of Canada
	Cassa di Risparmio di San Miniato S.p.A.	HongkongBank of Australia Limited

Joyo Bank, Limited (The)	Nanto Bank, Ltd. (The)	Shenzhen Development Bank Limited*
Kagoshima Bank Ltd. (The)	National Bank of New Zealand Limited (The)	Shinhan Bank
Kiyo Bank, Ltd. (The)	Nedcor Bank Limited	Shoko Chukin Bank (The)
Kofuku Bank, Limited (The)	Nederlandse Scheepshypothekbank N.V.	Standard Bank London Limited
Kookmin Bank	Nordbanken AB (publ)	Standard Bank of South Africa Limited (The)
Korea Development Bank (The)	Nordfinanz-Bank Zurich	Standard Chartered Bank (C.I.) Limited
Korea First Bank	Offitbank	State Bank of New South Wales Limited
Korea Housing Bank	Oita Bank, Limited (The)	Sudwestdeutsche Landesbank
Korea Long Term Credit Bank	P.T. Bank Bumi Daya (Persero)	Swiss Volksbank
Kredietbank S.A. Luxembourgeoise	P.T. Bank Central Asia	Taipei Business Bank
Kwangju Bank Ltd (The)	P.T. Bank Dagang Negara (Persero)	Taiwan Business Bank
Landesbank Hessen-Thuringen Girozentrale	P.T. Bank Danamon Indonesia	Toho Bank, Ltd. (The)
Lloyds Bank plc	P.T. Bank Duta	Trans-Arabian Investment Bank E.C.
Mashreq Bank P.S.C.	P.T. Bank Ekspor Impor Indonesia (Persero)	Trinkaus & Burkhardt (International) S.A.
Merita Bank Ltd	P.T. Bank Rakyat Indonesia (Persero)	Ueberseebank AG
Merrill Lynch Bank (Suisse) S.A.	Raiffeisen Zentralbank Osterreich AG	Union Bancaire Privee CBI-TDB
Merrill Lynch International Bank Limited	Republic National Bank of New York (Luxembourg) S.A.	Wells Fargo Bank, N.A.
Metropolitan Bank and Trust Company	Republic National Bank of New York (Suisse) S.A.	West Merchant Bank Limited
Michinoku Bank, Ltd. (The)	Rothschild Bank AG	Woolwich Guernsey Limited
Midland Bank plc	Samuel Montagu & Co. Limited	Yamanashi Chuo Bank, Ltd. (The)
Mie Bank, Ltd. (The)	Sanwa Bank (Schweiz) AG	Zenshinren Bank (The)
Morgan Stanley Trust Company*		
Musashino Bank, Ltd (The)		

* Approved but not yet opened.

**ANNEX B: AUTHORISED INSTITUTIONS AND
LOCAL REPRESENTATIVE OFFICES (CHANGES DURING 1995)**

ADDITIONS

Licensed banks

Agricultural Bank of China (The)	Industrial and Commercial Bank of China (The)	People's Construction Bank of China (The)
Bank Brussels Lambert S.A.		
Eighteenth Bank Ltd. (The)	NationsBank, National Association (Carolinas) (The)	
Hokkoku Bank, Ltd. (The)	NBD Bank	

Restricted licence banks

BNP International Financial Services (Hong Kong) Ltd.	DongNam Finance (Hong Kong) Ltd.
---	----------------------------------

Deposit - taking companies

Hana Finance Asia Limited

Local representative offices

Abbey National Treasury Services plc	Cassa di Risparmio di Lucca S.p.A.	Guangdong Development Bank (The)
Baden - Wurttembergische Bank AG	Cassa di Risparmio di Pisa S.p.A.	Korea Housing Bank
Banca Popolare di Ravenna S.p.A.	Cassa di Risparmio di Pistoia e Pescia S.p.A.	Kwangju Bank Ltd. (The)
Banco S.Geminiano e S. Prospero S.p.A.	Cassa di Risparmio di San Miniato S.p.A.	Morgan Stanley Trust Company
Banco Sud Americano		Musashino Bank, Ltd. (The)
Bank of Ikeda, Ltd. (The)	Cooperbanca S.p.A.	Nordbanken AB (publ)
Caisse Centrale des Banques Populaires	Daegu Bank Ltd. (The)	Shenzhen Development Bank Limited
Cassa di Risparmio di Livorno S.p.A.	Export - Import Bank of Japan (The)	
	Generale Bank SA/NV	

DELETIONS

Licensed banks

Bank of Credit & Commerce Hong Kong Limited

Fukutoku Bank, Ltd.

Nordbanken

Restricted licence banks

Bishopscourt (BB & Co.) Ltd.

NBD Bank

Deposit - taking companies

BCCI Finance International Limited

First Chicago Capital Markets Asia Limited

Keppel Finance (HK) Ltd.

BNP International Financial Services (Hong Kong) Ltd.

First Chicago Hong Kong Limited

Wa Pei Finance Company Limited

Local representative offices

Agricultural Bank of China (The)

Eighteenth Bank, Ltd. (The)

National Westminster Bank USA

Bancomer S.A.

Four Seas Bank Ltd

NationsBank, National Association (Carolinas) (The)

Banque Bruxelles Lambert S.A.

Hana Bank

People's Construction Bank of China (The)

Banque Francaise du Commerce Exterieur

Hokkoku Bank, Ltd. (The)

Suruga Bank, Ltd. (The)

Cassa di Risparmio di Livorno S.p.A.

Hyogo Bank, Ltd. (The)

Tokyo Tomin Bank, Ltd. (The)

Cassa di Risparmio di Lucca S.p.A.

Industrial and Commercial Bank of China (The)

Tyndall Bank International Limited

Credito Romagnolo

Kansallis - Osake - Pankki

DongNam Bank

Keppel Bank of Singapore Ltd.

NAME CHANGES

LICENSED BANKS

Old Name

Banca Commerciale Italiana
Banca Nazionale dell' Agricoltura
Bank of East Asia, Limited (The)
Bank of Seoul
Berliner Handels - und Frankfurter Bank
Commercial Bank of Hong Kong Limited (The)
Credito Italiano
NationsBank of North Carolina, N.A.
NBD Bank , N.A.
Skandinaviska Enskilda Banken
Svenska Handelsbanken
Wardley Limited

New Name

Banca Commerciale Italiana Societa' per Azioni
Banca Nazionale dell' Agricoltura Societa' per Azioni
Bank of East Asia, Limited (The) 東亞銀行有限公司
SEOULBANK
BHF - Bank Aktiengesellschaft
Asia Commercial Bank Limited
Credito Italiano Societa' per Azioni
NationsBank, National Association (Carolinas)
NBD Bank
Skandinaviska Enskilda Banken AB (publ)
Svenska Handelsbanken AB (publ)
HSBC Investment Bank Asia Limited

RESTRICTED LICENCE BANKS

Old Name

ABSA Finance Asia Limited
Baring Brothers & Co. Limited
Daiwa Securities (H.K.) Ltd.
FNB (Asia) Limited
NedFinance (Asia) Limited
United Merchants Finance Limited

New Name

ABSA Asia Limited
Bishopscourt (BB & Co.) Limited
Daiwa Securities (H.K.) Ltd. 大和証券(香港)有限公司
FNB (Asia) Limited 南非冠邦(亞洲)有限公司
Nedcor Asia Limited
GE Capital Finance Limited

DEPOSIT-TAKING COMPANIES

Old Name

Carr Indosuez Asia Limited
O. T. B. Finance Limited
Peace Finance Company Limited
Standard London (Asia) Limited

New Name

W. I. Carr Indosuez Capital Asia Limited
OTB Card Company Limited
Vietnam Finance Company Limited
Standard London (Asia) Limited 英國標旗(亞洲)有限公司

LOCAL REPRESENTATIVE OFFICES

Old Name

Banco Santander (Suiza) S.A.
Citizens National Bank (The)
Union Bank of Finland Ltd.

New Name

Banco Santander (Suisse) S.A.
Kookmin Bank
Merita Bank Ltd.

TABLE 1: MAJOR ECONOMIC INDICATORS

	1991	1992	1993	1994	1995	1996 (a)
I. GROSS DOMESTIC PRODUCT						
Real GDP growth (%)	5.1	6.3	6.1	5.4(b)	4.6(b)	5.0
Nominal GDP growth (%)	14.8	16.6	15.2	13.3(b)	9.3(b)	12.4
Real growth of major expenditure components of GDP (%)						
- Private consumption expenditure	8.6	8.5	7.5	6.3(b)	1.3(b)	4.0
- Government consumption expenditure	7.7	7.2	2.2	3.5(b)	4.3(b)	5.0
- Gross domestic fixed capital formation, of which	9.3	9.2	3.7	14.0(b)	6.4(b)	6.1
- Construction	0.6	0.0	11.5	16.3(b)	0.2(b)	6.6
- Machinery and equipment	16.8	21.4	2.7	15.9(b)	19.8(b)	8.6
- Exports	15.0	18.3	12.7	9.8(b)	11.8(b)	10.0
- Imports	18.1	20.8	12.0	13.4(b)	13.0(b)	7.7
GDP at current market price (US\$ bn)	86.0	100.7	116.0	131.5(b)	143.7(b)	160.1
Per capita GDP at current market price (US\$)	14,949	17,324	19,600	21,702(b)	23,210(b)	25,300
II. EXTERNAL TRADE (HK\$ BN)						
Visible trade						
Domestic exports of goods	231.0	234.1	223.0	222.1	231.7	236.3
Re-exports of goods	534.8	690.8	823.2	947.9	1,112.5	1,270.9
Total Imports of goods(c)	782.0	958.5	1,075.7	1,254.4	1,495.7	1,639.0
Visible trade balance(c)	-16.2	-33.5	-29.5	-84.4	-151.6	-131.8
Invisible trade						
Exports of services	161.1	189.4	215.6	243.9(b)	291.0(b)	342.7
Imports of services	100.8	114.2	123.0	142.5(b)	164.7(b)	186.7
Invisible trade balance	60.3	75.1	92.6	101.4(b)	126.4(b)	156.0
III. FISCAL EXPENDITURE AND REVENUE (HK\$MN, FISCAL YEAR)						
Total government expenditure(d)	92,191	113,332	147,438	164,155	183,190(b)	194,080
Total government revenue(e)	114,670	135,311	166,602	174,998	180,720(b)	195,700
Consolidated cash surplus	22,509	21,979	19,164	10,843	-2,470(b)	1,620
Reserve balance as at end of fiscal year	99,053	121,032	140,196	151,040	148,570(b)	150,190
IV. PRICES (ANNUAL CHANGE, %)						
Consumer Price Index (A)	12.0	9.4	8.5	8.1	8.7	7.5
Composite Consumer Price Index	11.6	9.6	8.8	8.8	9.1	n.a.
Trade Unit Value Indices						
- Domestic exports	1.9	1.0	0.3	1.6	2.4	n.a.
- Re-exports	2.2	0.8	-0.6	1.5	3.5	n.a.
- Imports	1.9	0.2	-0.6	2.8	5.0	n.a.
Property Price Indices						
- Residential flats	38	41	10	24	-7	n.a.
- Office premises	1	37	20	40	-15	n.a.
- Retail premises	28	40	22	17	-4	n.a.
- Flatted factory premises	8	29	20	7	-8	n.a.

Figures set out in Tables 1 to 15 may not add up due to rounding.

	1991	1992	1993	1994	1995
V. LABOUR					
Labour force (annual change, %)	1.8	-0.2	2.9	3.5	3.2
Employment (annual change, %)	1.4	-0.4	2.8	3.5	1.9
Unemployment rate (annual average, %)	1.8	2.0	2.0	1.9	3.2
Underemployment rate (annual average, %)	1.6	2.1	1.6	1.4	2.1
Employment ('000)					
- Manufacturing	629	565	484	423	386 (f)
- Financing, insurance, real estate and business services	296	315	338	370	375 (f)
- Wholesale, retail and import/export trades, restaurants and hotels	872	915	949	1,022	1,031 (f)
VI. MONEY SUPPLY (HK\$ BN)					
HK\$ Money supply					
- M1	111.8	139.5	168.4	167.9	171.4
- M2 (g)	636.0	727.0	922.4	1,094.7	1,260.2
- M3 (g)	660.1	750.3	939.5	1,112.1	1,278.1
Total Money supply					
- M1	128.5	155.6	187.6	185.3	189.7
- M2	1,371.0	1,518.8	1,761.0	1,988.5	2,265.3
- M3	1,435.7	1,574.3	1,819.7	2,067.0	2,346.4
VII. INTEREST RATES (END OF PERIOD, %)					
Three-month interbank Rate	4.00	4.19	3.63	6.31	5.88
Savings deposit	3.50	1.50	1.50	3.75	4.00
One-month time deposit	4.25	2.25	2.25	5.00	5.18 (h)
Banks' 'Best lending rate'	8.50	6.50	6.50	8.50	8.75
VIII. EXCHANGE RATES (END OF PERIOD)					
HK\$/US\$	7.781	7.741	7.726	7.738	7.732
Trade-weighted Effective Exchange Rate Index (Nov 1983=100)	108.4	113.2	113.8	123.5	122.7
IX. FOREIGN EXCHANGE RESERVES (US\$ BN)					
	28.9	35.2	43.0	49.3	55.4
X. STOCK MARKET (END OF PERIOD FIGURES)					
Hang Seng Index	4,297	5,512	11,888	8,191	10,073
Average price/earning ratio	13.0	13.1	21.6	10.7	11.4
Market capitalisation (HK\$ bn)	949.2	1,332.2	2,975.4	2,085.2	2,348.3

(a) Forecast as at March 1996.

(b) The estimates are preliminary.

(c) Adjusted to include an estimate of imports of gold for industrial and commercial use.

(d) Including equity investment and repayment of debt.

(e) Including net borrowing

(f) End-September 1995 figures.

(g) Adjusted to include foreign currency swap deposits.

(h) The rate is based on those quoted by major licensed banks after the interest rate deregulation.

TABLE 2: AUTHORISED INSTITUTIONS: DOMICILE AND PARENTAGE

	1991	1992	1993	1994	1995
LICENSED BANKS					
(i) Incorporated in Hong Kong	30	30	32	32	31
(ii) Incorporated outside Hong Kong	133	134	140	148	154
TOTAL	163	164	172	180	185
RESTRICTED LICENCE BANKS					
(i) Subsidiaries of licensed banks incorporated:					
(a) in Hong Kong	3	3	2	2	2
(b) outside Hong Kong	12	13	16	15	16
(ii) Subsidiaries or branches of foreign banks which are not licensed in Hong Kong	25	27	29	36	35
(iii) Bank related	10	10	7	7	7
(iv) Others	3	3	3	3	3
TOTAL	53	56	57	63	63
DEPOSIT-TAKING COMPANIES					
(i) Subsidiaries of licensed banks incorporated:					
(a) in Hong Kong	25	24	25	25	24
(b) outside Hong Kong	56	55	57	53	51
(ii) Subsidiaries of foreign banks which are not licensed in Hong Kong	44	37	34	33	33
(iii) Bank related	14	12	11	11	9
(iv) Others	20	19	15	15	15
TOTAL	159	147	142	137	132
ALL AUTHORISED INSTITUTIONS	375	367	371	380	380
LOCAL REPRESENTATIVE OFFICES	152	148	142	156	157

TABLE 3: PRESENCE OF WORLD'S LARGEST 500 BANKS IN HONG KONG

WORLD RANKING ^(a)	PRESENCE IN THE FORM OF:									
	NUMBER OF OVERSEAS BANKS ^(b)					LICENSED BANKS ^(c)				
	91	92	93	94	95	91	92	93	94	95
1 – 20	19	19	18	19	19	19	19	17	17	18
21 – 50	22	24	26	28	27	21	23	23	23	25
51 – 100	34	35	37	38	39	32	28	30	29	29
101 – 200	53	53	58	65	57	31	27	34	44	45
201 – 500	78	80	71	86	86	16	21	20	24	26
Sub-total	206	211	210	236	228	119	118	124	137	143
Others	107	99	101	93	109	14	16	16	11	11
TOTAL	313	310	311	329	337	133	134	140	148	154

(a) Top 500 banks/banking groups in the world ranked by total assets less contra items. Figures are extracted from *The Banker*, July 1991, 1992, 1993, 1994 and 1995 issues.

(b) The sum of the number of licensed banks, restricted licence banks, deposit-taking companies and local representative offices is greater than the number of banks with a presence in Hong Kong due to multiple presence of some banks. The figures exclude banks incorporated in Hong Kong.

(c) Including restricted licence banks and deposit-taking companies which are subsidiaries of overseas banks, classified in accordance with the world ranking of these overseas banks.

RESTRICTED LICENCE BANKS (c)					DEPOSIT-TAKING COMPANIES (c)					LOCAL REPRESENTATIVE OFFICES				
91	92	93	94	95	91	92	93	94	95	91	92	93	94	95
10	11	10	10	11	14	14	14	13	12	2	2	—	4	3
2	2	6	7	5	9	9	9	9	9	6	2	3	6	3
3	3	4	2	4	14	12	12	15	10	7	8	5	9	11
2	3	3	5	3	20	18	17	17	17	23	28	22	20	17
8	9	9	17	15	21	21	13	18	19	57	50	43	57	52
25	28	32	41	38	78	74	65	72	67	95	90	73	96	86
14	15	14	12	13	34	29	35	20	23	57	58	69	60	71
39	43	46	53	51	112	103	100	92	90	152	148	142	156	157

**TABLE 4: AUTHORISED INSTITUTIONS:
COUNTRY/REGION OF BENEFICIAL OWNERSHIP**

COUNTRY/REGION	LICENSED BANKS					RESTRICTED LICENCE BANKS					DEPOSIT-TAKING COMPANIES				
	91	92	93	94	95	91	92	93	94	95	91	92	93	94	95
ASIA & PACIFIC															
Hong Kong	15	15	16	16	16	3	3	2	2	2	19	18	17	17	17
Australia	4	4	4	4	4	2	2	1	1	1	1	1	1	—	—
China	15	15	15	15	18	1	1	2	2	2	16	16	15	15	15
India	4	4	4	4	4	—	—	—	—	—	4	4	4	3	3
Indonesia	3	3	3	3	3	1	1	2	2	2	15	14	14	14	14
Japan	33	37	41	45	46	12	12	12	12	12	36	35	36	37	37
Malaysia	2	2	3	3	3	2	2	2	2	2	2	2	3	3	3
New Zealand	1	1	1	—	—	—	—	—	—	—	1	—	—	—	—
Pakistan	1	1	1	1	1	—	—	—	—	—	1	1	1	1	1
Philippines	2	2	2	2	2	1	1	1	1	1	5	6	6	6	6
Singapore	5	5	5	5	5	—	1	1	2	2	5	5	3	3	2
South Korea	3	3	3	3	3	2	3	4	5	6	9	8	8	8	9
Thailand	1	1	1	1	1	4	4	4	4	4	4	1	1	1	1
Taiwan	—	—	2	4	4	—	—	—	—	—	—	—	—	—	—
Vietnam	—	—	—	—	—	—	—	—	—	—	1	1	1	1	1
SUB-TOTAL	89	93	101	106	110	28	30	31	33	34	119	112	110	109	109
EUROPE															
Austria	2	2	2	2	2	—	—	—	—	—	—	—	—	—	—
Belgium/Luxembourg	3	3	3	3	3	—	—	—	—	—	2	2	2	2	—
Denmark	2	2	2	2	2	—	—	—	—	—	—	—	—	—	—
France	8	8	8	9	9	1	2	2	2	3	7	6	6	6	5
Germany	8	8	9	10	10	—	—	—	—	1	1	1	1	1	1
Italy	7	7	7	7	7	—	—	—	—	—	—	—	—	—	—
Netherlands	3	3	3	3	3	2	3	2	2	2	1	1	—	—	—
Norway	—	—	—	—	—	—	—	—	—	—	—	—	—	—	—
Republic of Ireland	1	—	—	—	—	—	—	—	—	—	—	—	—	—	—
Spain	3	4	4	3	3	—	—	—	—	—	—	—	—	—	—
Sweden	3	3	3	3	2	—	—	—	—	—	—	—	—	—	—
Switzerland	3	3	3	3	3	1	1	1	1	2	—	—	—	—	—
United Kingdom	5	5	6	7	7	7	7	7	7	3	4	4	4	4	3
SUB-TOTAL	48	48	50	52	51	11	13	12	12	11	15	14	13	13	9

COUNTRY/REGION	LICENSED BANKS					RESTRICTED LICENCE BANKS					DEPOSIT-TAKING COMPANIES				
	91	92	93	94	95	91	92	93	94	95	91	92	93	94	95
MIDDLE EAST															
Bahrain	1	1	1	1	1	-	-	-	-	-	1	1	1	1	1
Iran	1	1	1	1	1	-	-	-	-	-	-	-	-	-	-
U.A.E.	-	-	-	-	-	2	1	1	1	1	2	1	1	1	1
SUB-TOTAL	2	2	2	2	2	2	1	1	1	1	3	2	2	2	2
NORTH AMERICA															
Canada	6	6	6	6	6	2	2	2	1	1	1	1	1	1	1
United States	18	15	13	14	16	8	8	9	11	11	17	15	12	10	9
SUB-TOTAL	24	21	19	20	22	10	10	11	12	12	18	16	13	11	10
South Africa	-	-	-	-	-	-	-	-	3	3	2	2	3	1	1
Bermuda	-	-	-	-	-	2	2	2	2	2	-	-	-	-	-
Others	-	-	-	-	-	-	-	-	-	-	2	1	1	1	1
GRAND TOTAL	163	164	172	180	185	53	56	57	63	63	159	147	142	137	132

TABLE 5: FLOW OF FUNDS: ALL AUTHORISED INSTITUTIONS

<i>(HK\$ bn)</i>	1994			1995		
	HK\$	F/CY	TOTAL	HK\$	F/CY	TOTAL
INCREASE (DECREASE) IN :						
CUSTOMER LENDING	162	246	408	118	355	473
Inside Hong Kong (a)	159	51	210	117	48	165
Outside Hong Kong	2	192	194	2	307	309
Others	1	3	4	—	—	—
INTERBANK LENDING	169	522	692	(28)	(53)	(81)
Inside Hong Kong	124	28	152	(2)	24	22
Outside Hong Kong	46	494	540	(27)	(77)	(104)
ALL OTHER ASSETS	94	64	158	(2)	132	130
TOTAL ASSETS	426	832	1,258	87	434	521
CUSTOMER DEPOSITS (b)	158	61	219	155	112	267
INTERBANK BORROWING	169	703	872	28	182	210
Inside Hong Kong	125	28	153	1	24	25
Outside Hong Kong	44	675	719	27	158	185
ALL OTHER LIABILITIES	87	79	166	(5)	50	44
TOTAL LIABILITIES	414	844	1,258	178	344	521
<i>NET INTERBANK BORROWING</i>	—	181	181	56	235	292
<i>NET CUSTOMER LENDING</i>	4	184	189	(37)	243	206

(a) Includes trade financing loans but excludes loans to finance trade not touching Hong Kong.

(b) Adjusted for swap deposits.
HK\$ deposits include swap deposits.

(c) "—" denotes that the amount is less than \$0.5 billion.

**TABLE 6: TOTAL LOANS AND DEPOSITS BY
CATEGORY OF AUTHORISED INSTITUTION**

<i>(HK\$ bn)</i>	TOTAL LOANS & ADVANCES				DEPOSITS FROM CUSTOMERS ^(a)			
	HK\$	F/CY	TOTAL	%	HK\$	F/CY	TOTAL	%
1991								
Licensed banks	644	1,473	2,117	94	580	731	1,311	95
Restricted licence banks	43	19	62	3	10	29	40	3
Deposit-taking companies	37	28	65	3	13	10	24	2
TOTAL	724	1,520	2,244	100	604	770	1,375	100
1992								
Licensed banks	720	1,612	2,331	94	661	788	1,449	96
Restricted licence banks	52	22	74	3	12	23	35	2
Deposit-taking companies	40	24	64	3	11	8	19	1
TOTAL	812	1,657	2,470	100	684	819	1,503	100
1993								
Licensed banks	859	1,854	2,714	95	843	833	1,676	97
Restricted licence banks	57	23	79	3	6	23	29	2
Deposit-taking companies	42	22	64	2	9	8	17	1
TOTAL	957	1,900	2,857	100	858	864	1,723	100
1994								
Licensed banks	1,007	2,095	3,101	95	1,000	884	1,884	97
Restricted licence banks	69	29	98	3	6	31	37	2
Deposit-taking companies	44	21	65	2	10	10	20	1
TOTAL	1,119	2,145	3,265	100	1,016	925	1,942	100
1995								
Licensed banks	1,106	2,446	3,552	95	1,156	997	2,152	97
Restricted licence banks	81	33	114	3	8	30	38	2
Deposit-taking companies	51	21	72	2	8	11	18	1
TOTAL	1,238	2,500	3,738	100	1,171	1,037	2,209	100

(a) HK\$ customer deposits include swap deposits.

TABLE 7: BALANCE SHEET: ALL AUTHORISED INSTITUTIONS

(HK\$ bn)	1991			1992		
	HK\$	F/CY	TOTAL	HK\$	F/CY	TOTAL
ASSETS						
Loans to customers	724	1,520	2,244	812	1,657	2,470
Inside Hong Kong (a)	707	192	900	795	205	999
Outside Hong Kong	11	1,283	1,293	11	1,410	1,421
Others	6	45	51	6	43	50
Interbank lending	335	2,579	2,914	348	2,424	2,772
Inside Hong Kong	292	286	578	285	277	561
Outside Hong Kong	44	2,293	2,336	64	2,147	2,211
Negotiable certificates of deposit	10	12	22	13	14	27
Bank acceptances and bank bills of exchange	3	33	36	3	46	49
FRN and commercial paper	7	87	94	5	78	83
Securities and investments	58	131	189	72	138	211
Other assets	36	84	120	41	80	121
TOTAL ASSETS	1,174	4,446	5,620	1,295	4,438	5,733
LIABILITIES						
Deposits from customers (b)	604	770	1,375	684	819	1,503
Interbank borrowing	417	3,482	3,899	410	3,454	3,864
Inside Hong Kong	292	288	579	282	278	560
Outside Hong Kong	126	3,194	3,320	128	3,176	3,304
Negotiable certificates of deposit	23	7	30	27	8	35
Other liabilities	140	176	316	171	160	331
TOTAL LIABILITIES	1,185	4,435	5,620	1,292	4,441	5,733

(a) Includes trade financing loans but excludes loans to finance trade not touching Hong Kong.

(b) HK\$ customer deposits include swap deposits.

	1993			1994			1995		
	HK\$	F/CY	TOTAL	HK\$	F/CY	TOTAL	HK\$	F/CY	TOTAL
957	1,900	2,857	1,119	2,145	3,265	1,238	2,500	3,738	
934	245	1,179	1,094	296	1,389	1,210	343	1,554	
16	1,610	1,626	17	1,802	1,819	19	2,109	2,128	
7	44	52	9	47	56	9	47	56	
407	2,252	2,659	577	2,774	3,351	548	2,721	3,270	
313	249	561	437	277	713	435	301	736	
94	2,003	2,098	140	2,497	2,637	113	2,420	2,534	
16	19	35	37	22	59	57	44	101	
3	48	51	3	53	56	4	65	69	
5	81	85	9	102	111	19	135	154	
110	140	250	164	158	322	124	187	312	
50	76	126	64	93	157	70	129	199	
1,547	4,516	6,063	1,973	5,347	7,321	2,061	5,782	7,842	
858	864	1,723	1,016	925	1,942	1,171	1,037	2,209	
441	3,477	3,917	610	4,180	4,790	638	4,362	5,000	
311	247	558	436	276	711	437	300	737	
130	3,229	3,359	174	3,904	4,078	201	4,062	4,263	
33	20	54	64	36	100	92	40	132	
228	142	369	284	205	489	251	251	501	
1,560	4,503	6,063	1,974	5,346	7,321	2,152	5,690	7,842	

**TABLE 8: TOTAL DEPOSITS FROM CUSTOMERS BY
TYPE AND CATEGORY OF AUTHORISED INSTITUTION**

(HK\$ bn)	LICENSED BANKS			RESTRICTED LICENCE BANKS	DEPOSIT- TAKING COMPANIES	TOTAL
	DEMAND	SAVINGS	TIME			
HK DOLLAR (includes swap deposits)						
1991	69	229	282	10	13	604
1992	87	245	329	12	11	684
1993	105	282	456	6	9	858
1994	100	275	625	6	10	1,016
1995	100	301	755	8	8	1,171
FOREIGN CURRENCY (excludes swap deposits)						
1991	17	85	630	29	10	770
1992	16	109	663	23	8	819
1993	19	141	674	23	8	864
1994	17	126	741	31	10	925
1995	18	139	840	30	11	1,037
TOTAL						
1991	86	314	911	40	24	1,375
1992	103	354	992	35	19	1,503
1993	124	422	1,129	29	17	1,723
1994	118	401	1,366	37	20	1,942
1995	118	439	1,594	38	18	2,209

TABLE 9: GEOGRAPHICAL BREAKDOWN OF NET EXTERNAL CLAIMS (LIABILITIES) OF ALL AUTHORISED INSTITUTIONS

<i>(HK\$ bn)</i>	1994			1995		
	NET CLAIMS ON/ (LIAB. TO) BANKS OUTSIDE HK	NET CLAIMS ON/ (LIAB. TO) NON-BANK CUSTOMERS OUTSIDE HK	TOTAL NET CLAIMS (LIABILITIES)	NET CLAIMS ON/ (LIAB. TO) BANKS OUTSIDE HK	NET CLAIMS ON/ (LIAB. TO) NON-BANK CUSTOMERS OUTSIDE HK	TOTAL NET CLAIMS (LIABILITIES)
ASIA & PACIFIC	(1,058)	1,627	569	(1,308)	1,953	645
Japan	(1,155)	1,542	387	(1,497)	1,842	345
Thailand	65	25	90	76	31	107
South Korea	58	26	84	65	33	99
China	(49)	54	5	7	56	63
Australia	27	3	30	40	7	47
New Zealand	14	11	25	14	19	33
Taiwan	54	(12)	42	38	(13)	25
Indonesia	5	10	15	7	13	20
India	—	9	9	1	7	8
Malaysia	6	1	6	2	3	5
Philippines	(4)	(10)	(14)	(3)	(9)	(11)
Macao	(8)	(3)	(11)	(14)	(5)	(19)
Vanuatu	(21)	(2)	(23)	(23)	(2)	(25)
Singapore	(45)	(27)	(72)	(21)	(30)	(51)
Others	(3)	(1)	(4)	(2)	—	(2)
NORTH AMERICA	13	68	80	44	54	98
United States	11	31	42	42	18	61
Canada	1	36	38	2	35	37
CARIBBEAN	26	(61)	(35)	15	(127)	(112)
Bahamas	61	—	61	59	1	60
Panama	—	18	18	—	18	18
Bermuda	(1)	3	2	—	4	4
Netherlands Antilles	1	(21)	(21)	(1)	(40)	(41)
Cayman Islands	(35)	(39)	(74)	(43)	(76)	(120)
Others	—	(22)	(21)	—	(34)	(34)
AFRICA	1	14	15	—	11	11
Liberia	—	12	12	—	11	11
South Africa	1	1	1	—	—	1
Nigeria	—	1	1	—	—	—
Others	—	—	—	(1)	—	(1)
LATIN AMERICA	2	1	3	1	2	3
Mexico	—	—	1	—	—	—
Venezuela	—	—	—	—	—	—
Others	1	—	2	1	2	2

(HK\$ bn)	1994			1995		
	NET CLAIMS ON/ (LIAB. TO) BANKS OUTSIDE HK	NET CLAIMS ON/ (LIAB. TO) NON-BANK CUSTOMERS OUTSIDE HK	TOTAL NET CLAIMS (LIABILITIES)	NET CLAIMS ON/ (LIAB. TO) BANKS OUTSIDE HK	NET CLAIMS ON/ (LIAB. TO) NON-BANK CUSTOMERS OUTSIDE HK	TOTAL NET CLAIMS (LIABILITIES)
EASTERN EUROPE	-	-	-	-	-	1
Russia	-	-	-	-	-	-
Others	-	-	-	-	-	-
WESTERN EUROPE	(325)	(44)	(369)	(305)	(51)	(356)
Italy	(3)	13	11	5	9	14
Norway	-	2	2	-	2	2
Sweden	1	2	3	(1)	2	1
Finland	-	1	1	(1)	1	-
Denmark	(6)	1	(5)	(4)	2	(2)
Switzerland	-	(2)	(2)	(3)	(2)	(5)
Austria	(7)	-	(6)	(10)	-	(10)
Belgium	(33)	2	(31)	(26)	2	(24)
Luxembourg	(36)	(8)	(44)	(27)	(1)	(28)
Germany	(55)	(3)	(58)	(53)	14	(39)
France	(54)	1	(53)	(41)	(1)	(41)
Netherlands	(20)	(40)	(60)	(15)	(70)	(84)
United Kingdom	(100)	(18)	(118)	(111)	(12)	(123)
Others	(13)	5	(8)	(19)	4	(15)
MIDDLE EAST	(7)	(2)	(9)	(17)	-	(17)
Bahrain	4	-	4	1	-	1
Israel	(1)	-	(1)	(1)	-	(1)
Qatar	(1)	-	(1)	(1)	-	(1)
United Arab Emirates	(3)	-	(3)	(3)	-	(3)
Saudi Arabia	(5)	-	(5)	(9)	-	(9)
Others	(1)	(1)	(2)	(4)	1	(3)
OTHERS	-	(3)	(2)	1	-	1
OVERALL TOTAL	(1,349)	1,600	251	(1,570)	1,842	271

Note: "-" sign denotes that the amount is less than \$0.5 bn.

TABLE 10: ASSETS BY COUNTRY/REGION OF BENEFICIAL OWNERSHIP OF AUTHORISED INSTITUTION

<i>(HK\$ bn)</i>		COUNTRY OF OWNERSHIP					TOTAL
		CHINA	JAPAN	US	EUROPE	OTHERS	
1991	HK\$	261	182	86	184	460	1,174
	F/Cy	208	3,056	194	460	528	4,446
TOTAL		469	3,238	280	645	989	5,620
1992	HK\$	289	187	93	190	536	1,295
	F/Cy	241	2,963	210	489	534	4,438
TOTAL		530	3,150	303	679	1,070	5,733
1993	HK\$	331	200	110	242	664	1,547
	F/Cy	257	2,996	189	480	593	4,516
TOTAL		588	3,196	299	722	1,258	6,063
1994	HK\$	453	265	129	322	805	1,973
	F/Cy	258	3,642	211	597	639	5,347
TOTAL		711	3,906	340	919	1,444	7,321
1995	HK\$	484	258	125	313	881	2,061
	F/Cy	292	3,713	267	729	781	5,782
TOTAL		776	3,971	392	1,042	1,662	7,842

TABLE 11: DEPOSITS FROM CUSTOMERS (a) BY COUNTRY/REGION OF BENEFICIAL OWNERSHIP OF AUTHORISED INSTITUTION

(HK\$ bn)		COUNTRY OF OWNERSHIP					TOTAL
		CHINA	JAPAN	US	EUROPE	OTHERS	
1991	HK\$	139	26	31	69	339	604
	F/Cy	152	110	79	135	294	770
TOTAL		291	136	110	204	634	1,375
1992	HK\$	172	29	38	72	373	684
	F/Cy	169	150	80	129	290	819
TOTAL		341	179	118	202	663	1,503
1993	HK\$	213	42	42	94	467	858
	F/Cy	184	191	76	108	305	864
TOTAL		397	233	119	201	773	1,723
1994	HK\$	287	45	40	104	541	1,016
	F/Cy	163	234	80	137	312	925
TOTAL		450	279	120	241	853	1,942
1995	HK\$	331	47	46	129	618	1,171
	F/Cy	177	297	85	136	343	1,037
TOTAL		508	344	131	265	961	2,209

(a) HK\$ customer deposits include swap deposits.

TABLE 12: LOANS AND ADVANCES TO CUSTOMERS BY COUNTRY/REGION OF BENEFICIAL OWNERSHIP OF AUTHORISED INSTITUTION

<i>(HK\$ bn)</i>		COUNTRY OF OWNERSHIP					TOTAL
		CHINA	JAPAN	US	EUROPE	OTHERS	
1991	HK\$	126	126	67	109	295	724
	F/Cy	33	1,282	26	97	81	1,520
TOTAL		159	1,409	93	206	376	2,244
1992	HK\$	151	135	70	123	332	812
	F/Cy	44	1,395	30	97	91	1,657
TOTAL		195	1,531	101	220	424	2,470
1993	HK\$	170	151	78	145	413	957
	F/Cy	50	1,584	38	116	112	1,900
TOTAL		221	1,735	116	261	524	2,857
1994	HK\$	204	185	83	173	474	1,119
	F/Cy	56	1,785	41	134	128	2,145
TOTAL		260	1,971	125	307	602	3,265
1995	HK\$	242	191	90	186	529	1,238
	F/Cy	64	2,071	48	163	155	2,500
TOTAL		306	2,262	138	349	684	3,738

TABLE 13: TOTAL LOANS FOR USE IN HONG KONG (a) BY COUNTRY/REGION OF BENEFICIAL OWNERSHIP OF AUTHORISED INSTITUTION

(HK\$ bn)		COUNTRY OF OWNERSHIP					TOTAL
		CHINA	JAPAN	US	EUROPE	OTHERS	
1991	HK\$	122	123	67	104	291	707
	F/Cy	14	89	15	41	34	192
TOTAL		136	213	81	144	325	900
1992	HK\$	147	131	70	118	329	795
	F/Cy	20	83	19	41	41	205
TOTAL		167	214	89	159	369	999
1993	HK\$	164	146	77	139	408	934
	F/Cy	22	86	25	51	60	245
TOTAL		186	233	102	190	468	1,179
1994	HK\$	197	181	83	165	468	1,094
	F/Cy	28	111	26	62	68	296
TOTAL		225	292	109	228	536	1,389
1995	HK\$	232	188	89	180	522	1,210
	F/Cy	35	109	30	81	89	343
TOTAL		267	297	119	260	611	1,554

(a) Includes trade financing loans but excludes loans to finance trade not touching Hong Kong.

TABLE 14: OTHER LOANS FOR USE OUTSIDE HONG KONG BY COUNTRY/REGION OF BENEFICIAL OWNERSHIP OF AUTHORISED INSTITUTION

(HK\$ bn)		COUNTRY OF OWNERSHIP					TOTAL
		CHINA	JAPAN	US	EUROPE	OTHERS	
1991	HK\$	3	3	—	3	2	11
	F/Cy	17	1,162	10	53	41	1,283
	TOTAL	19	1,165	10	56	43	1,293
1992	HK\$	3	4	—	3	2	11
	F/Cy	20	1,283	9	51	46	1,410
	TOTAL	23	1,287	9	54	47	1,421
1993	HK\$	4	4	1	4	3	16
	F/Cy	25	1,469	11	59	47	1,610
	TOTAL	29	1,473	11	63	50	1,626
1994	HK\$	4	4	1	4	4	17
	F/Cy	21	1,646	13	66	56	1,802
	TOTAL	26	1,649	14	70	60	1,819
1995	HK\$	7	2	1	3	5	19
	F/Cy	22	1,936	16	74	61	2,109
	TOTAL	30	1,938	18	77	65	2,128

Notes: A "—" sign denotes that the amount is less than \$0.5 billion.

TABLE 15: TOTAL LOANS FOR USE IN HONG KONG BY ECONOMIC SECTOR

<i>(HK\$ bn)</i> SECTOR	1991		1992		1993		1994		1995	
	HK\$	%	HK\$	%	HK\$	%	HK\$	%	HK\$	%
Hong Kong's visible trade	83	9	89	9	103	9	131	9	156	10
Manufacturing	55	6	64	6	74	6	86	6	100	6
Transport & transport equipment	51	6	58	6	63	5	72	5	69	4
Building, construction & property development and investment	126	14	145	14	180	15	249	18	262	17
Wholesale and retail trade	81	9	88	9	99	8	137	10	166	11
Financial concerns (other than authorised institutions)	114	13	123	12	157	13	161	12	176	11
Individuals:										
to purchase flats in the Home Ownership Scheme and Private Sector Participation Scheme	19	2	22	2	35	3	40	3	48	3
to purchase other residential property	180	20	203	20	233	20	259	19	300	19
other purposes	73	8	88	9	103	9	106	8	114	7
Others	119	13	120	12	131	11	149	11	163	10
TOTAL (a)	900	100	999	100	1,179	100	1,389	100	1,554	100

(a) Includes trade financing loans but excludes loans to finance trade not touching Hong Kong.