

Directions for working the models of Plate XIV

Two pincushions

(See figures 38, 48, 64 and 68 as well as the patterns of plates V and XIV.)

Begin with making the laces after the models shown above. Insert the laces into an écreu cambric. The pincushions made of linen and stuffed with horsehair are enclosed in a pink silk case edged with pink cord.

Sachets for handkerchiefs and gloves

(See figures 31, 41, 61 and 63, also the patterns of plates II, XIV and XV.)

Begin with the laces, which are to be made after the patterns indicated above. Introduce the lace into white cambric.

The handkerchief sachet is made of pale blue satin, edged with silk cord and tied with ribbons.

The glove sachet is made of old gold satin and trimmed outside with cord of the same colour. A yellow ribbon is passed round the middle of the glove sachet on the satin of the foundation and under the little squares of lace; this ribbon serves to fasten the sachet.

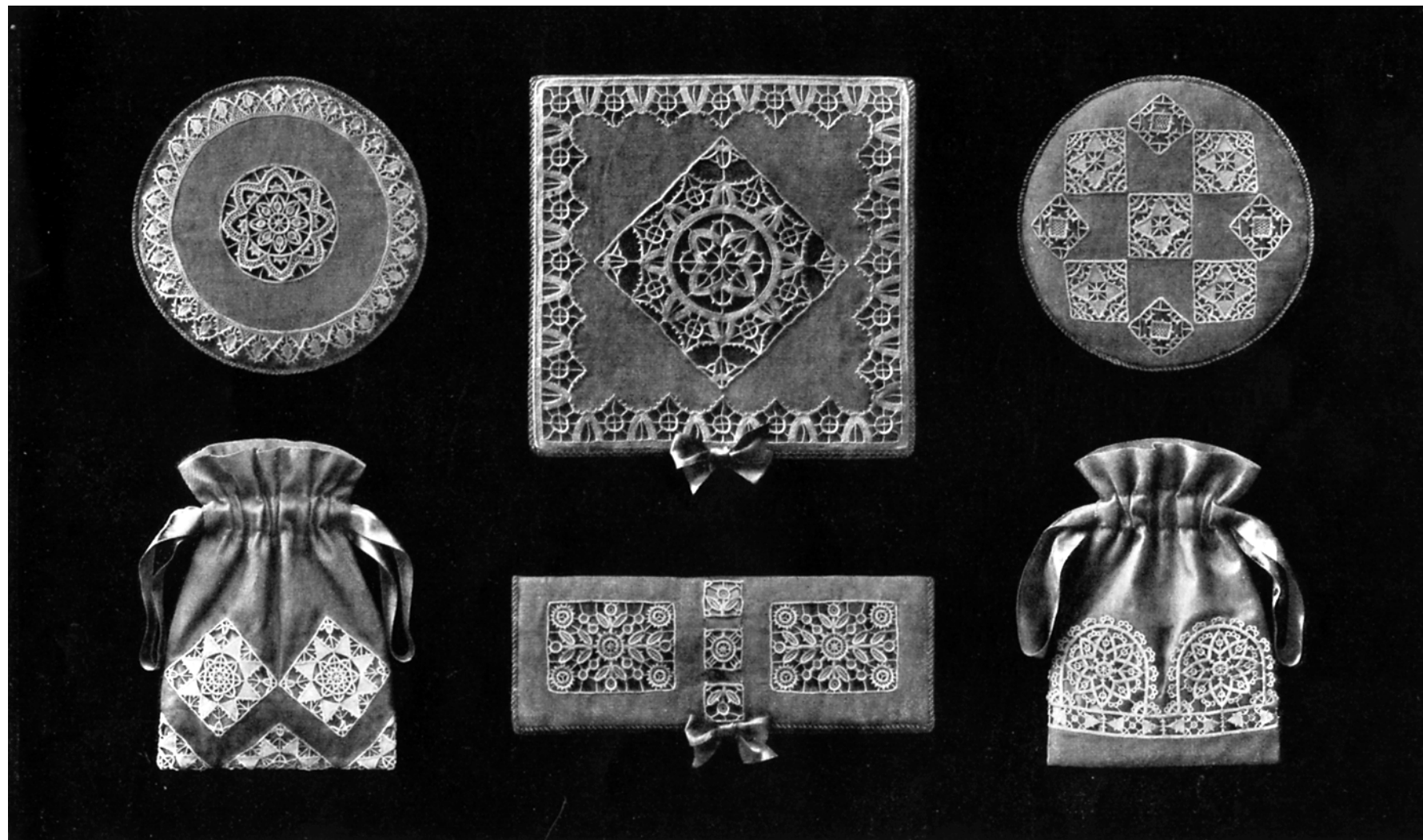
Two reticules

(See figures 39 and 58, also the patterns of plates VI and XIV.)

Begin with making the laces after the patterns indicated above. Introduce the laces into écreu silk.

Line the reticules with violet or red stuff and fasten with a ribbon to match, drawn through a runner at the top.

NEEDLE-MADE LACES — 1st Series



For making the laces of this plate, use D.M.C Special crochet cotton, D.M.C Alsatia or D.M.C Flax lace thread

DOLLFUS-MIEG & C^{ie}, Société anonyme, MULHOUSE-BELFORT-PARIS

Directions for working the models of Plate XV

Two aprons

(See figures 67 and 74, also the patterns of plates VIII and X.)

Begin with making the laces after the patterns indicated above. Introduce the laces into écru linen. They are edged with a row of little overcast bars.

The aprons, gathered at the top are tied with beige ribbon.

Linon waistcoat for ladies' dresses

(See figures 26 and 62, also the patterns of plates I and XV.)

Begin with making the laces after the patterns indicated above. Introduce the square motives into white linen ; the collar of the waistcoat is made of linen on which the lace is applied.

The waistcoat is lined with coloured silk which shows up the lace squares.

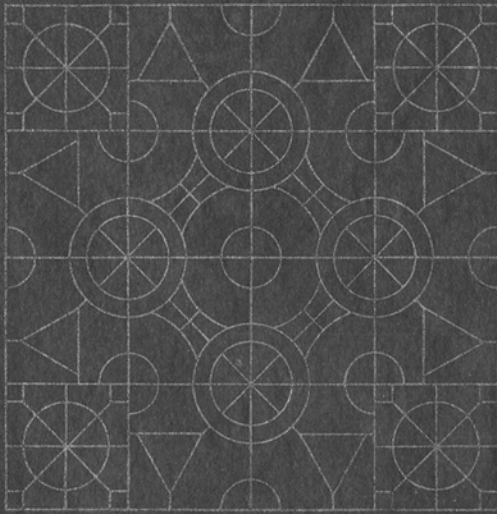
NEEDLE-MADE LACES — 1st Series



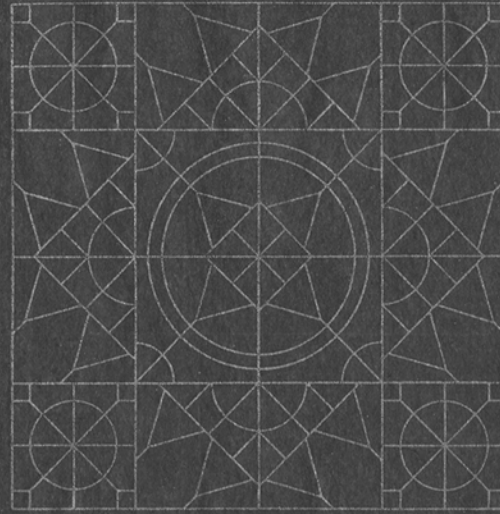
For making the laces of this plate, use D.M.C Special crochet cotton, D.M.C Alsatia or D.M.C Flax lace thread

DOLLFUS-MIEG & C^o, Société anonyme, MULHOUSE-BELFORT-PARIS

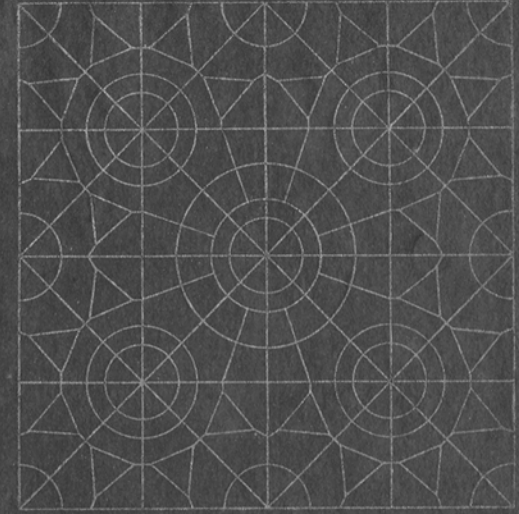
NEEDLE-MADE LACES — 1st Series



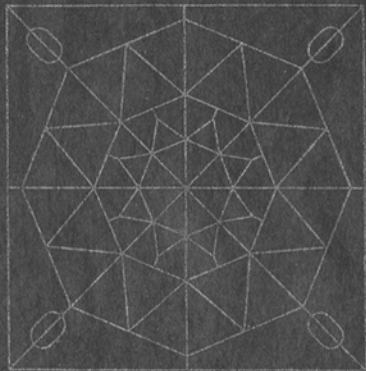
Pattern of figure 23.



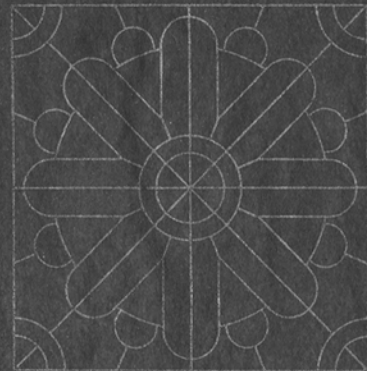
Pattern of figure 24.



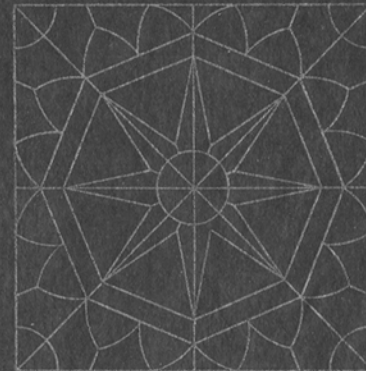
Pattern of figure 25.



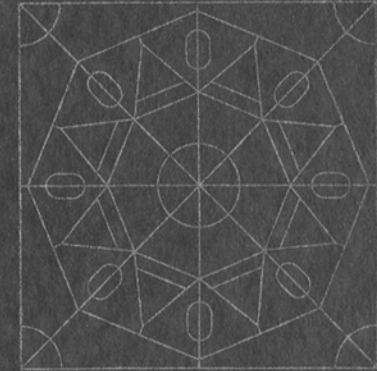
Pattern of figure 26.



Pattern of figure 27.



Pattern of figure 28.



Pattern of figure 29.

See at the back directions as to the materials to be used for the laces of this plate.

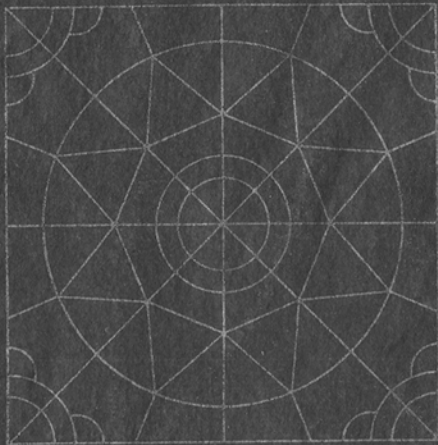
PLATE I

For executing the figures 23, 24, 25, 26, 27, 28 and 29 use one of the articles indicated below :

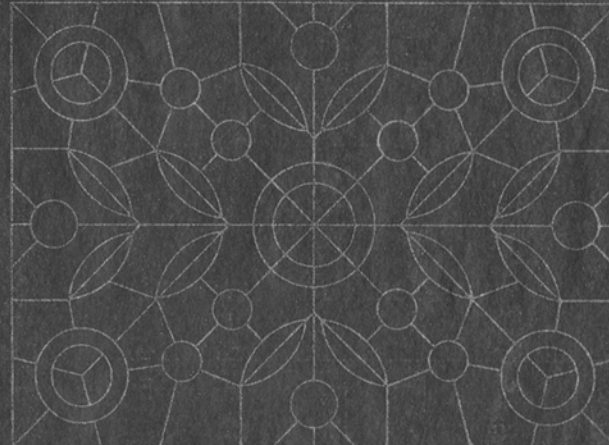
Articles to be used :	For the tracing : (*)	For the lace stitches :	For the corded bars and the button-hole stitch :
D.M.C Special crochet cotton..... (Cordonnet spécial)	N° 50.....	N° 50.....	N° 40.....
D.M.C Flax lace thread..... (Lin pour dentelles)	N° 35.....	N° 35.....	N° 30.....
D.M.C Alsatia.....	N° 40.....	N° 40.....	N° 30.....

(*) Use D.M.C Alsatian thread (Fil d'Alsace) N° 400 for fixing the threads of the tracing.

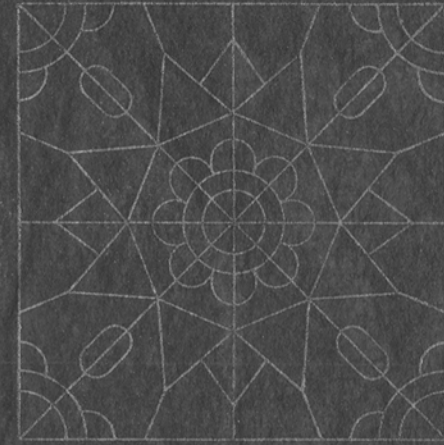
NEEDLE-MADE LACES — 1st Series



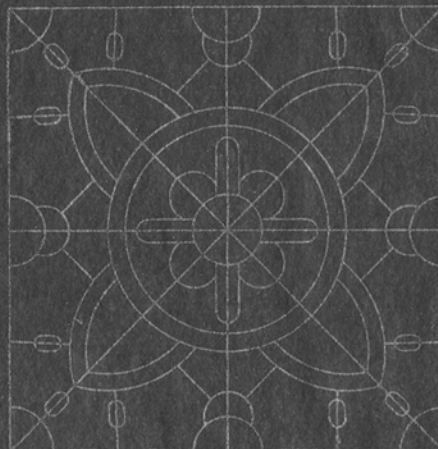
Pattern of figure 30.



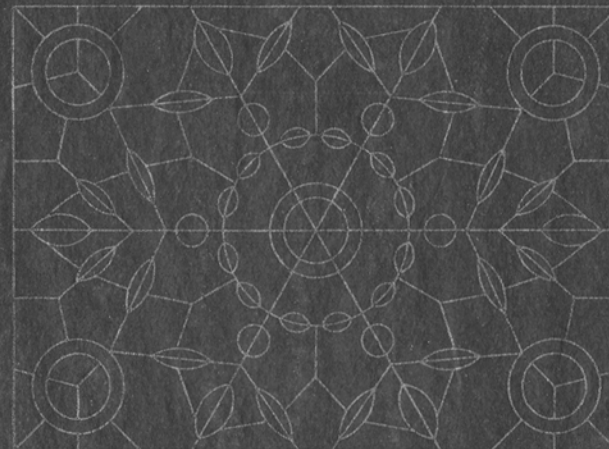
Pattern of figure 31.



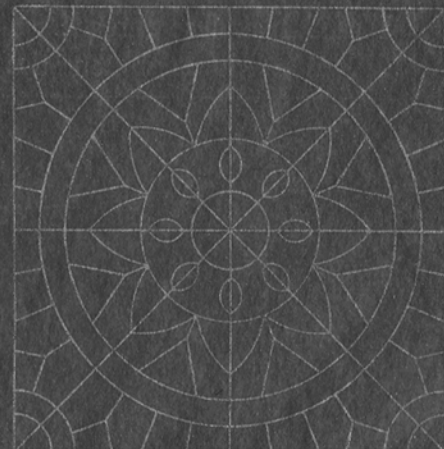
Pattern of figure 32.



Pattern of figure 33.



Pattern of figure 34.



Pattern of figure 35.

See at the back directions as to the materials to be used for the laces of this plate.

PLATE II

For executing the figures 30, 31, 32, 33, 34 and 35 use one of the articles indicated below :

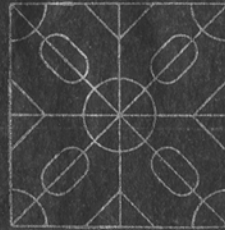
Articles to be used :	For the tracing : (*)	For the open-work lace stitches :	For the close lace stitches :	For the corded bars and the button-hole stitch :
D.M.C Special crochet cotton..... (Cordonnet spécial)	N° 50.....	N° 100.....	N° 50.....	N° 40.....
D.M.C Flax lace thread..... (Lin pour dentelles)	N° 35.....	N° 50.....	N° 35.....	N° 30.....

(*) Use D.M.C Alsatian thread (Fil d'Alsace) N° 400 for fixing the threads of the tracing.

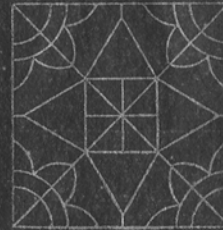
NEEDLE-MADE LACES — 1st Series



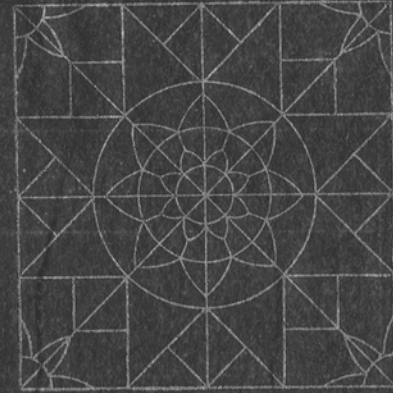
Pattern of figure 36.



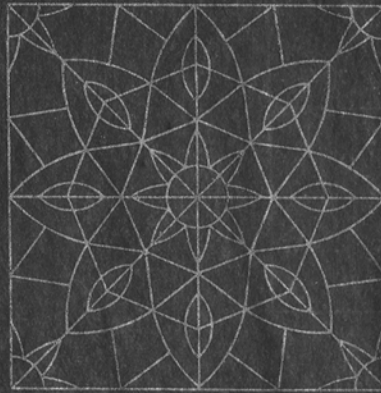
Pattern of figure 37.



Pattern of figure 38.



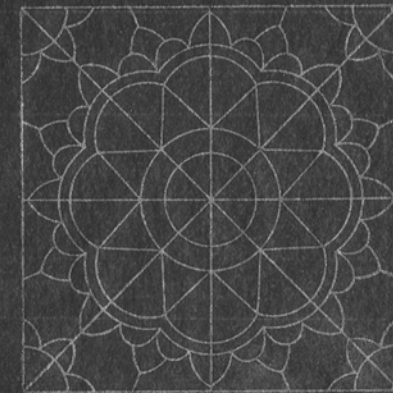
Pattern of figure 39.



Pattern of figure 40.



Pattern of figure 41.



Pattern of figure 42.

See at the back directions as to the materials to be used for the laces of this plate.

PLATE III

For executing the figures 36, 39, 40, 41 and 42 use one of the articles indicated below :

Articles to be used :	For the tracing : (*)	For the overcast bars :	For the close lacé stitches and the corded bars :	For the button- hole stitch :
D.M.C Special crochet cotton..... (Cordonnet spécial)	N° 60.....	N° 100.....	N° 50.....	N° 40.....
D.M.C Flax lace thread..... (Lin pour dentelles)	N° 40.....	N° 50.....	N° 35.....	N° 30.....

For executing the figures 37 and 38 use one of the articles indicated below :

Articles to be used :	For the tracing : (*)	For the lace stitches and the corded bars :	For the button- hole stitch :
D.M.C Special crochet cotton..... (Cordonnet spécial)	N° 60.....	N° 60.....	N° 50.....
D.M.C Flax lace thread..... (Lin pour dentelles)	N° 40.....	N° 40.....	N° 35.....

(*) Use D.M.C Alsatian thread (Fil d'Alsace) N° 400 for fixing the threads of the tracing.