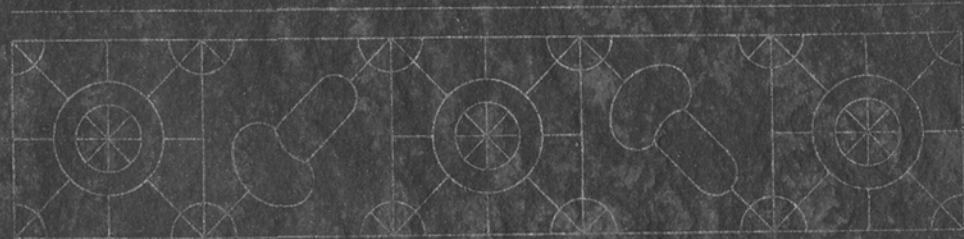
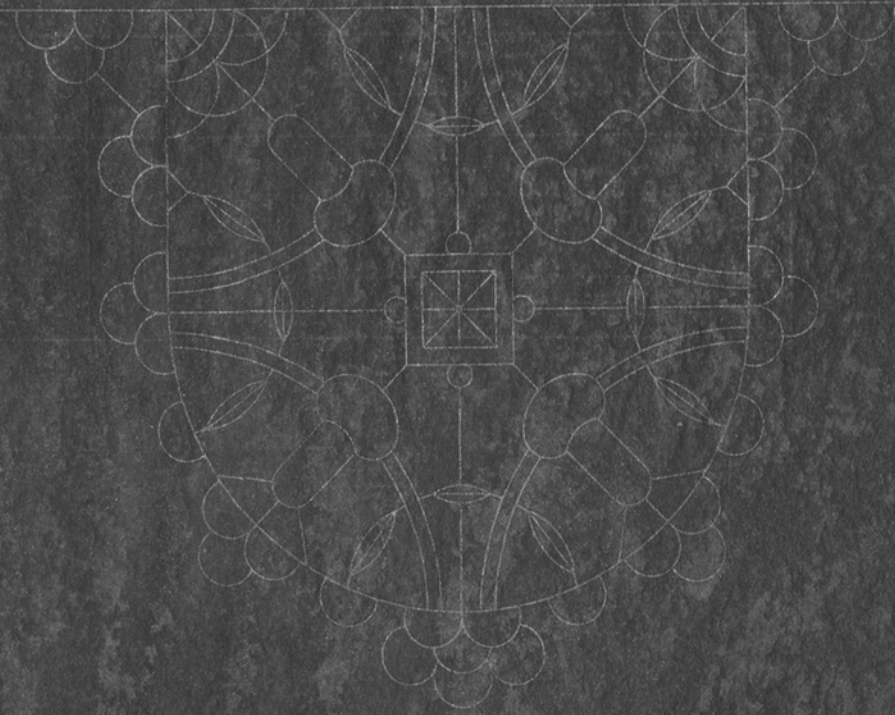


NEEDLE-MADE LACES — 1st Series



Pattern of figure 68.



Pattern of figure 69.

See at the back directions as to the materials to be used for the laces of this plate.

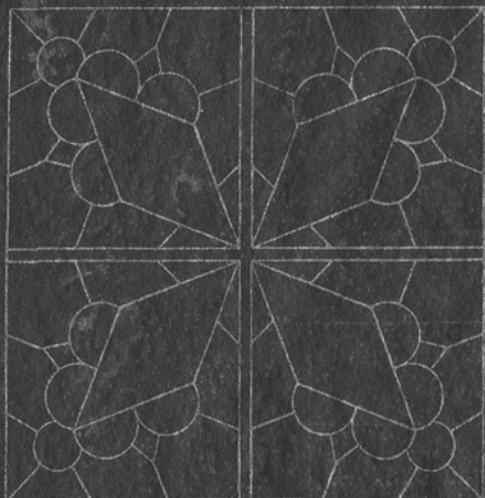
PLATE IX

For executing the figures 68 and 69 use one of the articles indicated below :

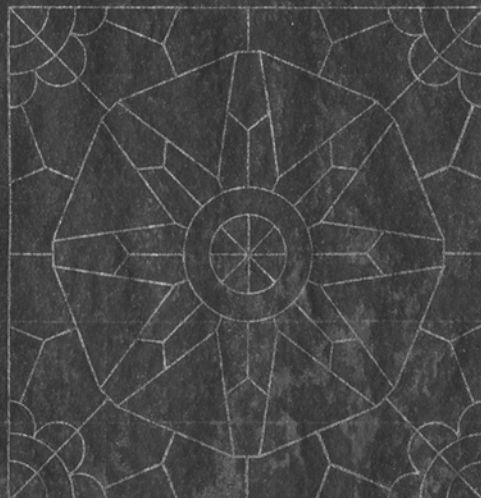
Articles to be used :	For the tracing : (*)	For the open-work lace stitches :	For the close lace stitches and the corded bars :	For the darning stitch and the button-hole stitch :
D.M.C Special crochet cotton..... (Cordonnet spécial)	N° 50.....	N° 80.....	N° 40.....	N° 30.....
D.M.C Flax lace thread..... (Lin pour dentelles)	N° 35.....	N° 45.....	N° 30.....	N° 20.....

(*) Use D.M.C Alsatian thread (Fil d'Alsace) N° 400 for fixing the threads of the tracing.

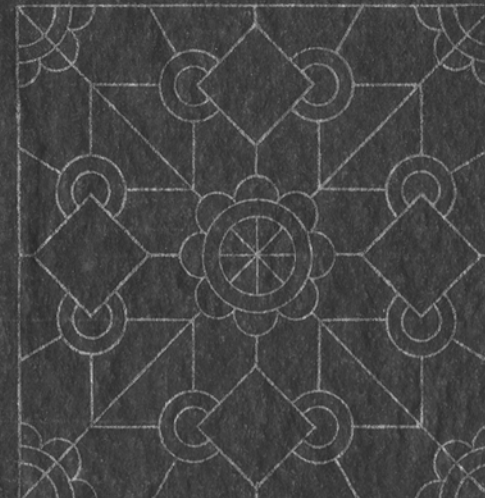
NEEDLE-MADE LACES — 1st Series



Pattern of figure 70.



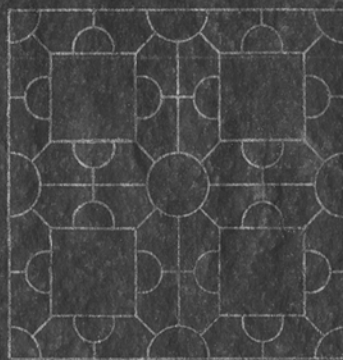
Pattern of figure 71.



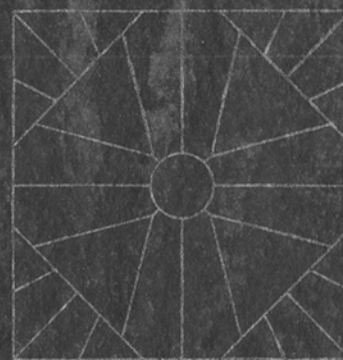
Pattern of figure 72.



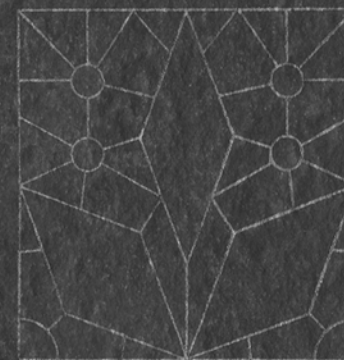
Pattern of figure 73.



Pattern of figure 74.



Pattern of figure 75.



Pattern of figure 76.

See at the back directions as to the materials to be used for the laces of this plate.

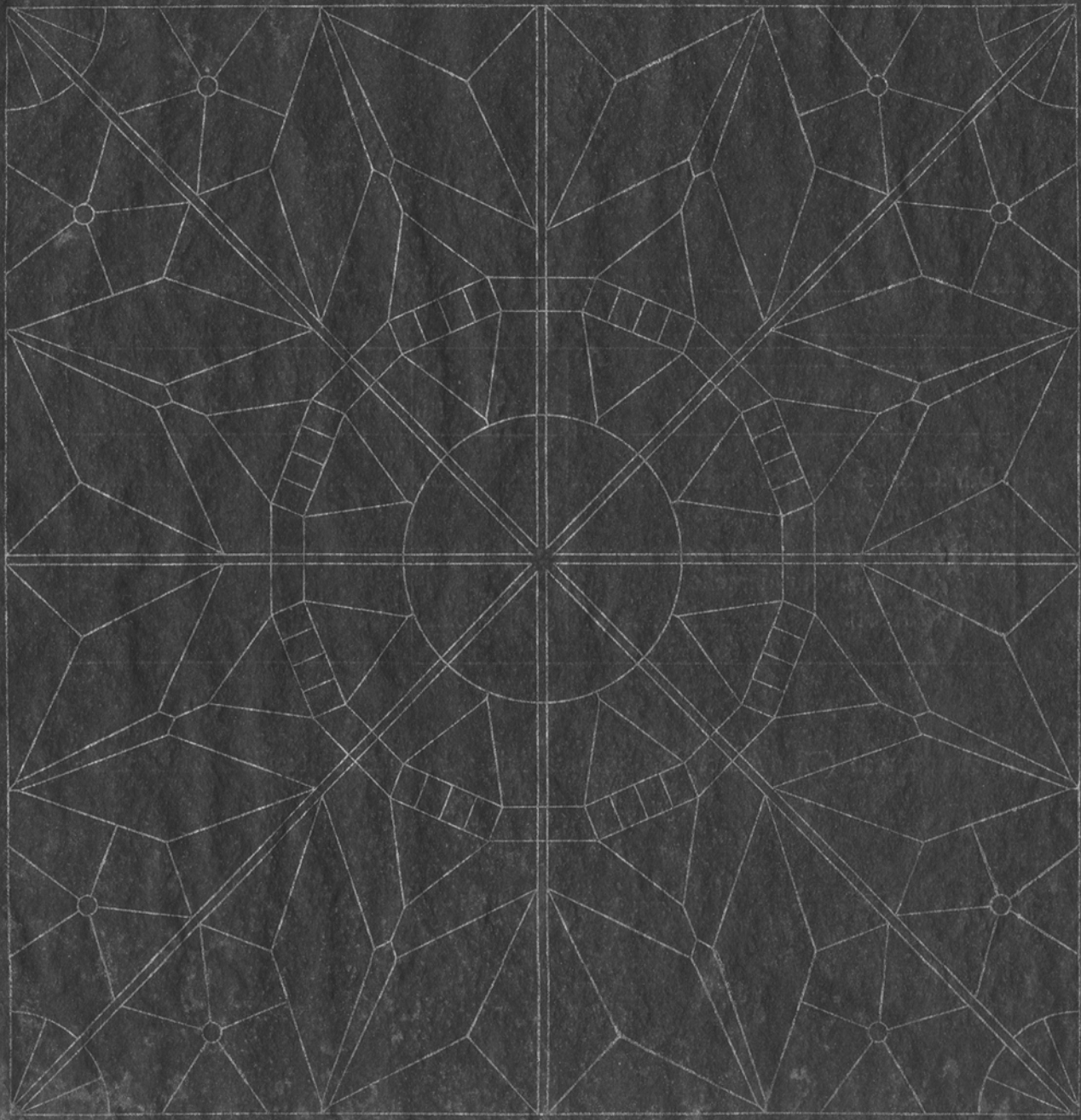
PLATE X

For executing the figures 70, 71, 72, 73, 74, 75 and 76 use one of the articles indicated below :

Articles to be used :	For the tracing : ^(*)	For the lace stitches, the bars and the button-hole stitch :
D.M.C Special crochet cotton..... (Cordonnet spécial)	N° 50.....	N° 40.....
D.M.C Flax lace thread..... (Lin pour dentelles)	N° 35.....	N° 30.....
D.M.C Alsatia.....	N° 40.....	N° 40.....

^(*) Use D.M.C Alsatian thread (Fil d'Alsace) N° 400 for fixing the Reticella braids and the threads of the tracing.

NEEDLE-MADE LACES — 1st Series



Pattern of the big square of the lace, figure 77.

See at the back directions as to the materials to be used for the lace
of this plate.

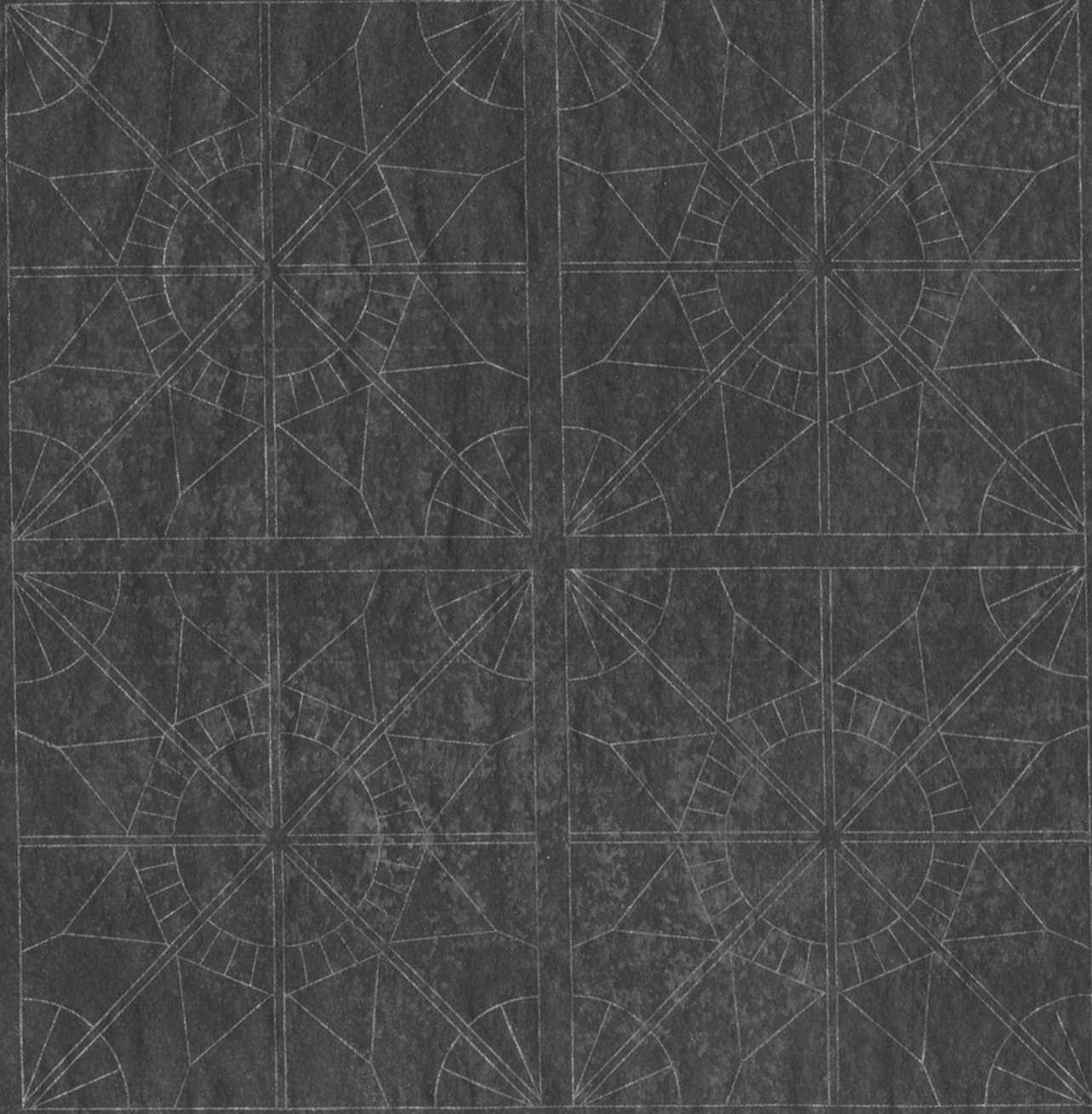
PLATE XI

For executing the figure 77 use one of the articles indicated below :

Articles to be used :	For the tracing : (*)	For the corded bars and the button-hole stitch :
D.M.C Special crochet cotton..... (Gordonnet spécial)	N° 50.....	N° 40.....
D.M.C Flax lace thread..... (Lin pour dentelles)	N° 35.....	N° 30.....
D.M.C Alsatia.....	N° 40.....	N° 40.....

(*) Use D.M.C Alsatian thread (Fil d'Alsace) N° 400 for fixing the Reticella braids and the threads of the tracing.

NEEDLE-MADE LACES — 1st Series



Pattern of the four little squares of the lace, figure 77.

See at the back directions as to the materials to be used for the lace of this plate.

PLATE XI

For executing the figure 77 use one of the articles indicated below :

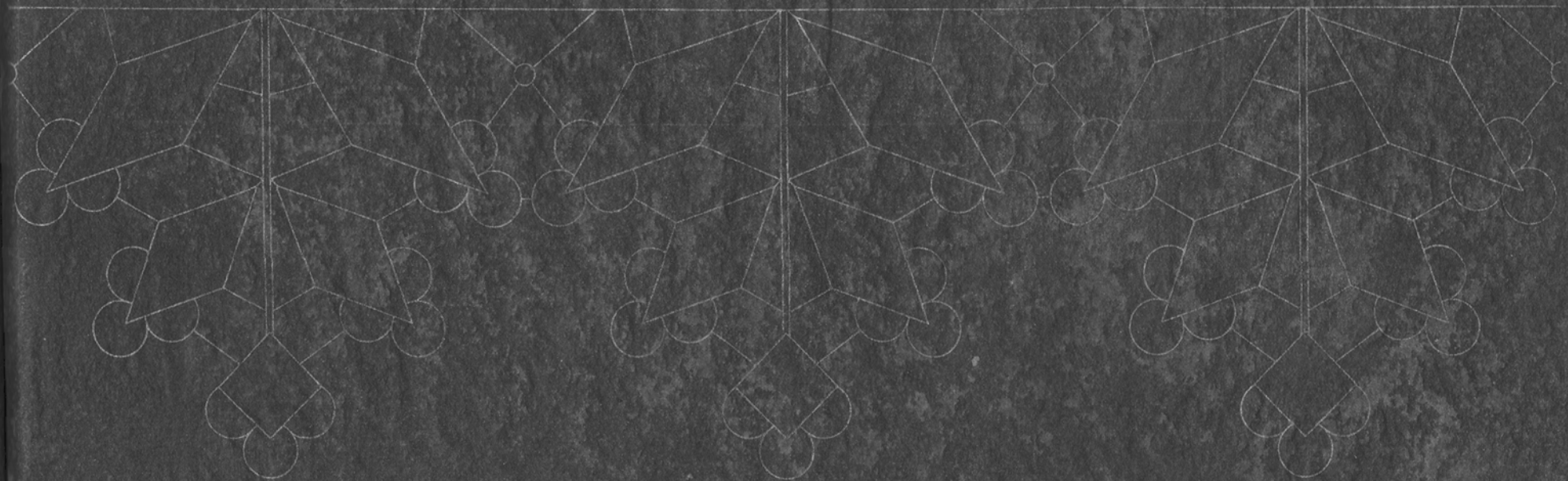
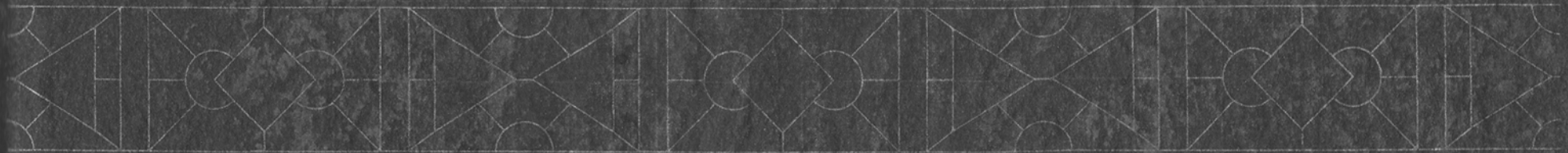
Articles to be used :	For the tracing : (*)	For the corded bars and the button-hole stitch :
D.M.C. Special crochet coton..... (Cordonnet spécial)	N° 50.....	N° 40.....
D.M.C. Flax lace thread..... (Lin pour dentelles)	N° 35.....	N° 30.....
D.M.C. Alsatia.....	N° 40.....	N° 40.....

(*) Use D.M.C. Alsatian thread (Fil d'Alsace) N° 400 for fixing the Reticella braids and the threads of the tracing.

NEEDLE-MADE LACES — 1st Series



Pattern of the footing of the lace, figure 77.



Pattern of the inner edge of the lace, figure 77.

See at the back directions as to the materials to be used for the lace of this plate.

PLATE XI

For executing the figure 77 use one of the articles indicated below :

Articles to be used :	For the tracing: (*)	For the corded bars and the button-hole stitch :
D.M.C Special crochet cotton..... (Cordonnet spécial)	N° 50.....	N° 40.....
D.M.C Flax lace thread..... (Lin pour dentelles)	N° 35.....	N° 30.....
D.M.C Alsatia.....	N° 40.....	N° 40.....

(*) Use D.M.C Alsatian thread (Fil d'Alsace) N° 400 for fixing the Reticella braids and the threads of the tracing.