

Fig. 159.

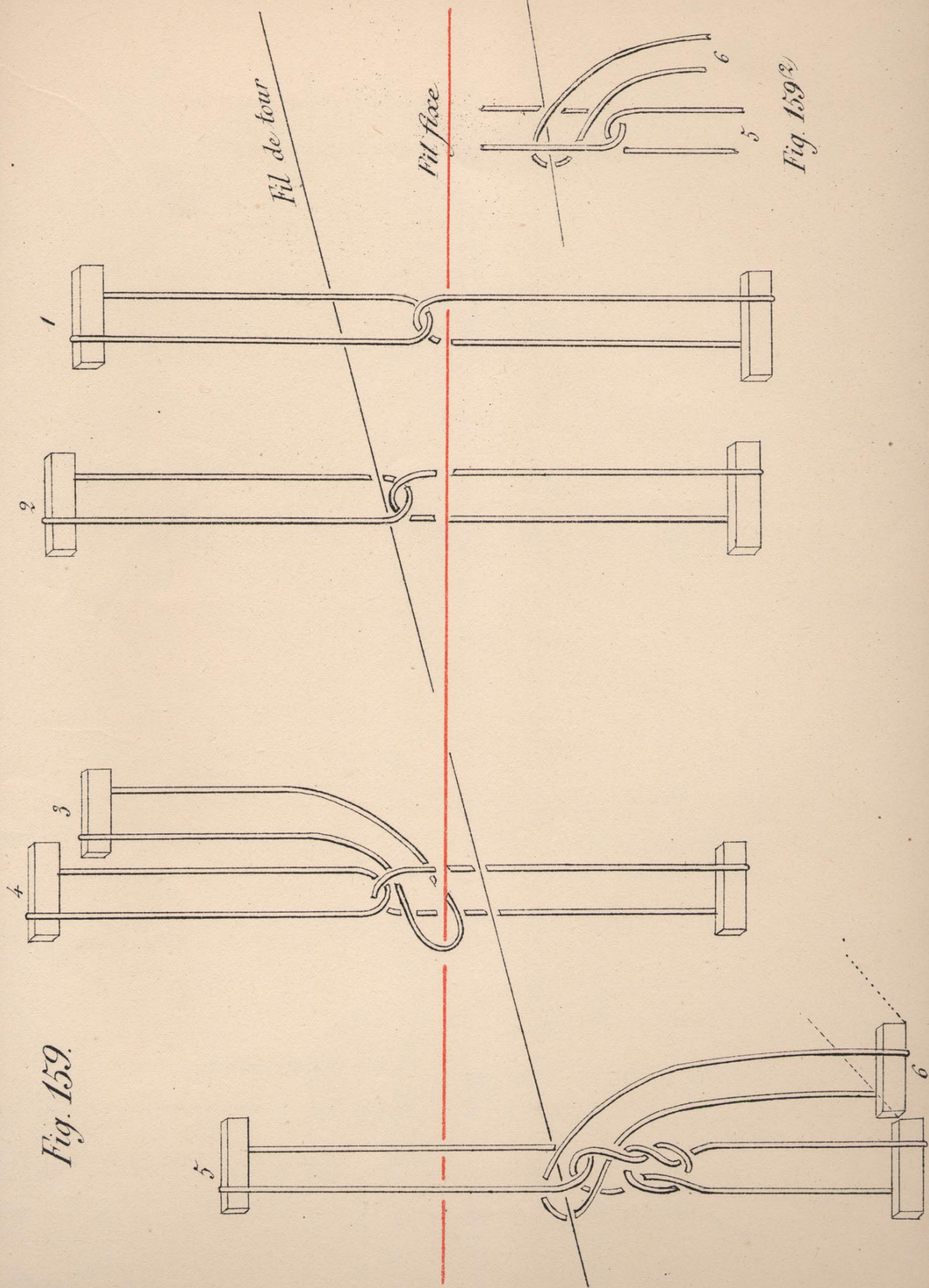


Fig. 159^b

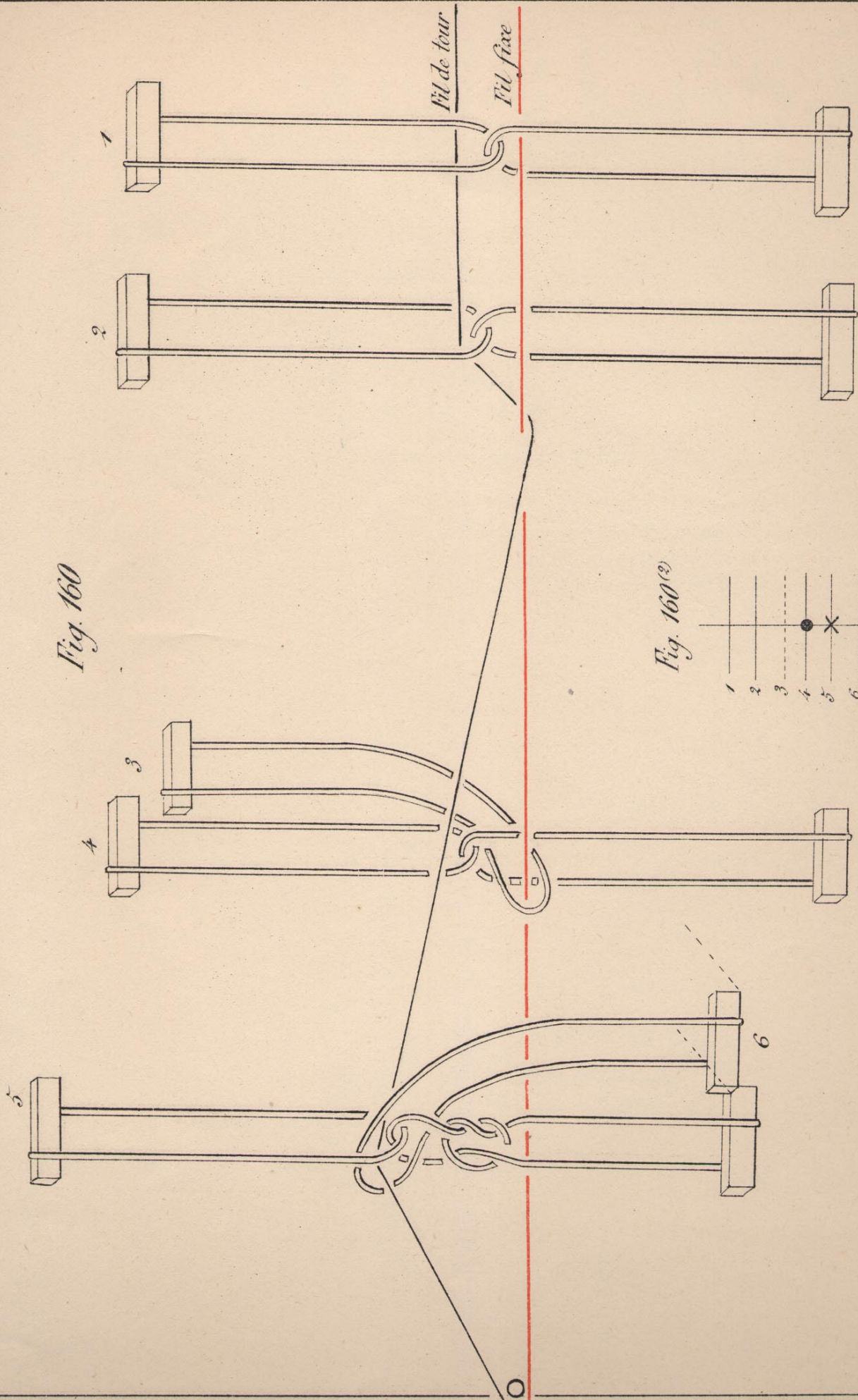


Fig. 160

Fig. 160⁽²⁾

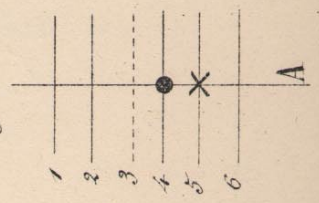


Fig. 161

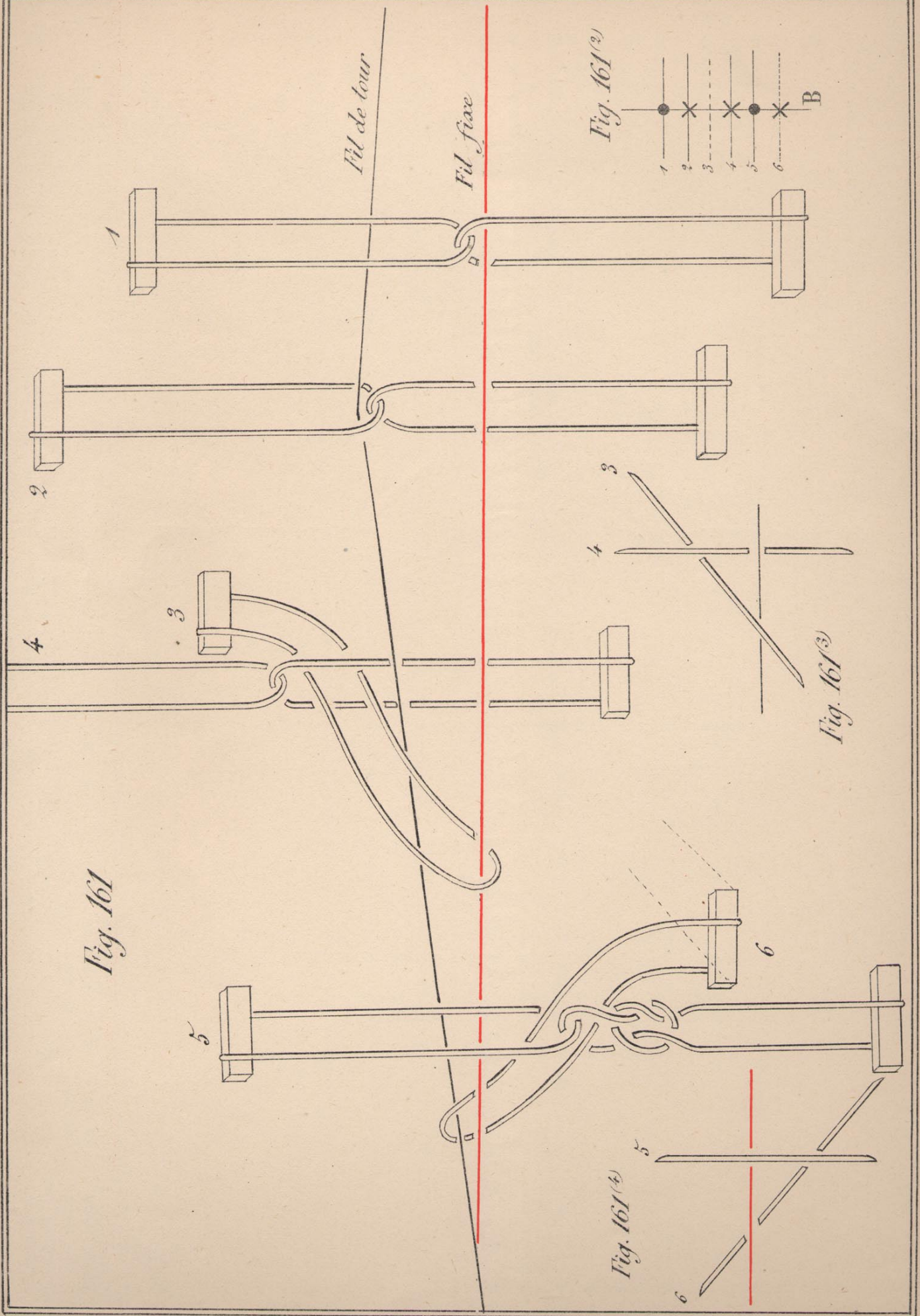


Fig. 161^(a)

Fig. 161^(b)

Fig. 161^(b)

Fig. 162

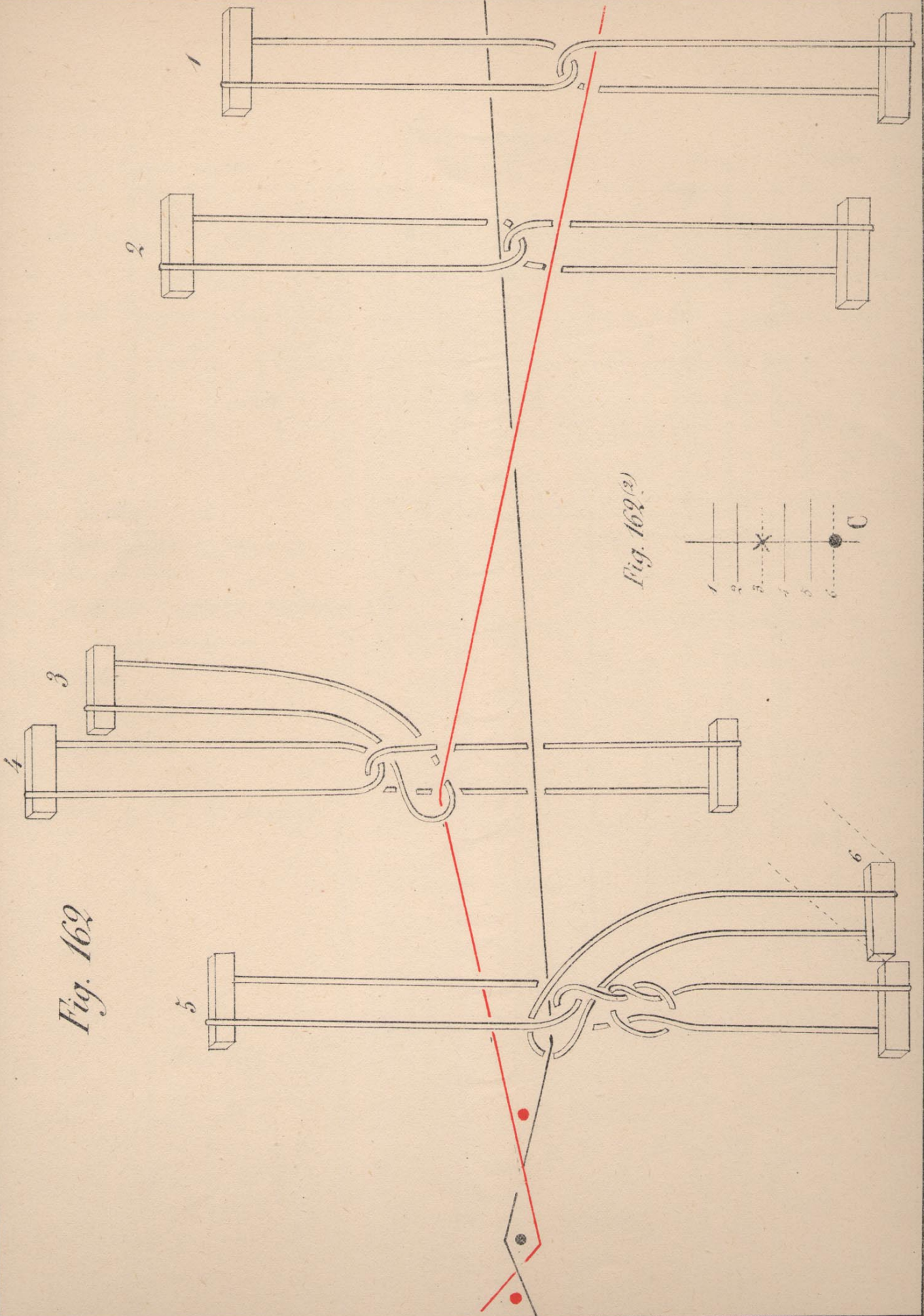


Fig. 162(2)

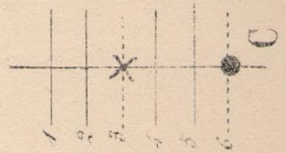
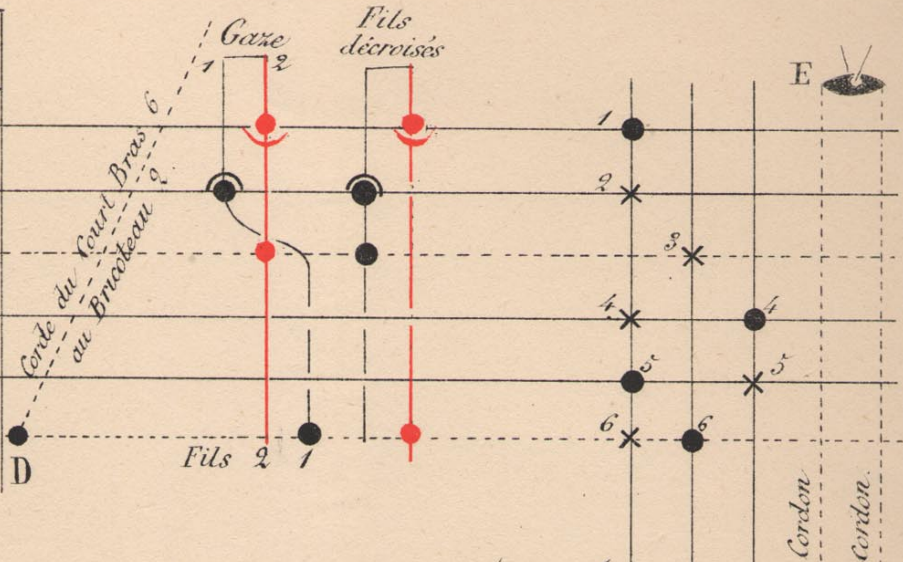


Fig. 163

| Ordre Lames | Tire Lames | Bricoteaux ou Contremarches |
|-------------|------------|-----------------------------|
| 1 | 1 | 1 |
| 2 | 2 | 2 |
| 3 | | 3 |
| 4 | 3 | 4 |
| 5 | 4 | 5 |
| 6 | 5 | |



A — Pas dur

B — Pas de Gaze ou Pas doux

C — Pas de Satin

OO — Poids qui étendent les Courts Bras 6.3.

AB — Gaze

AC — Toile ou Satin 2 pas

AC.BC. Satin 3 pas

AB — Toile par les fils décroisés.

Tire-Lames

ou

Longs Cordons

Contremarches

ou

Courts Cordons

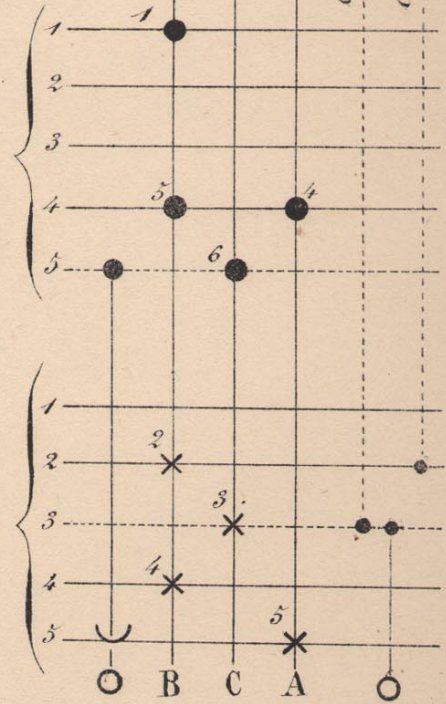


Fig. 163

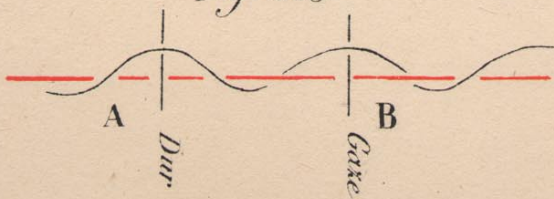
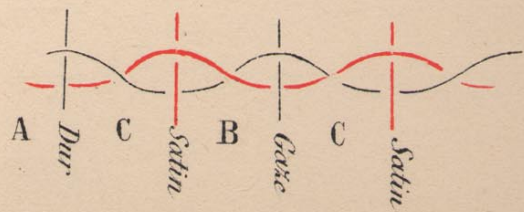


Fig. 163.



Systeme Lyonnais

Fig. 164

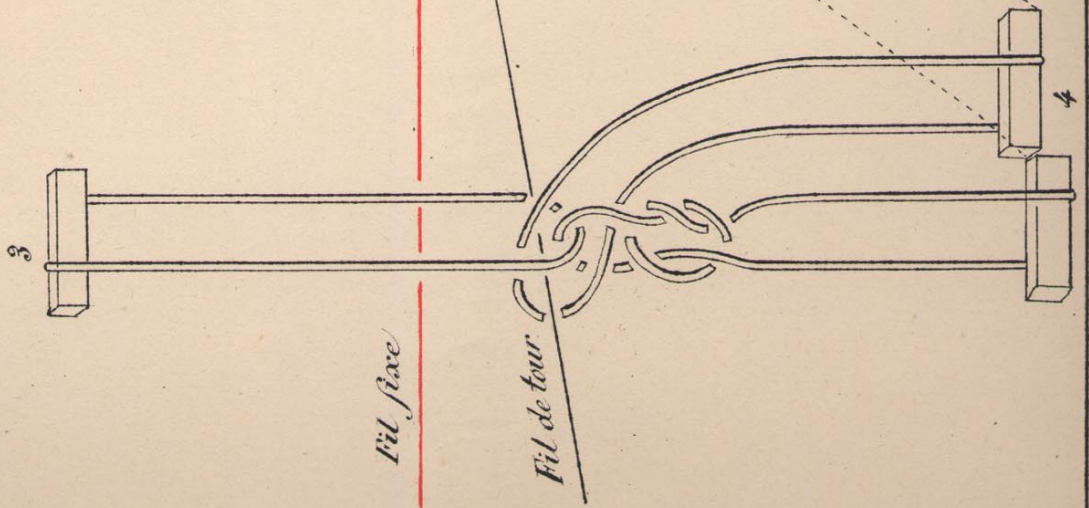
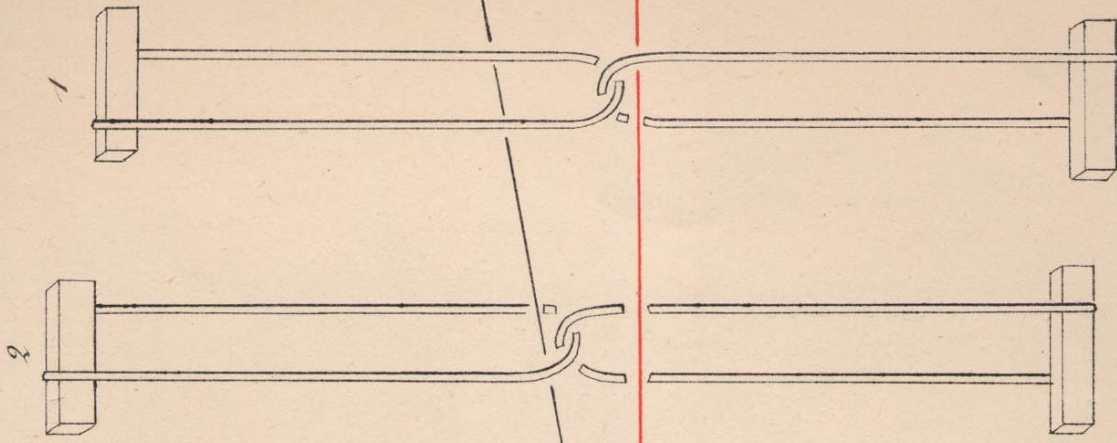
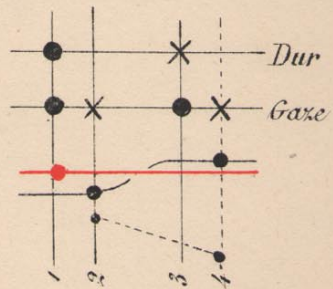


Fig. 164(2)



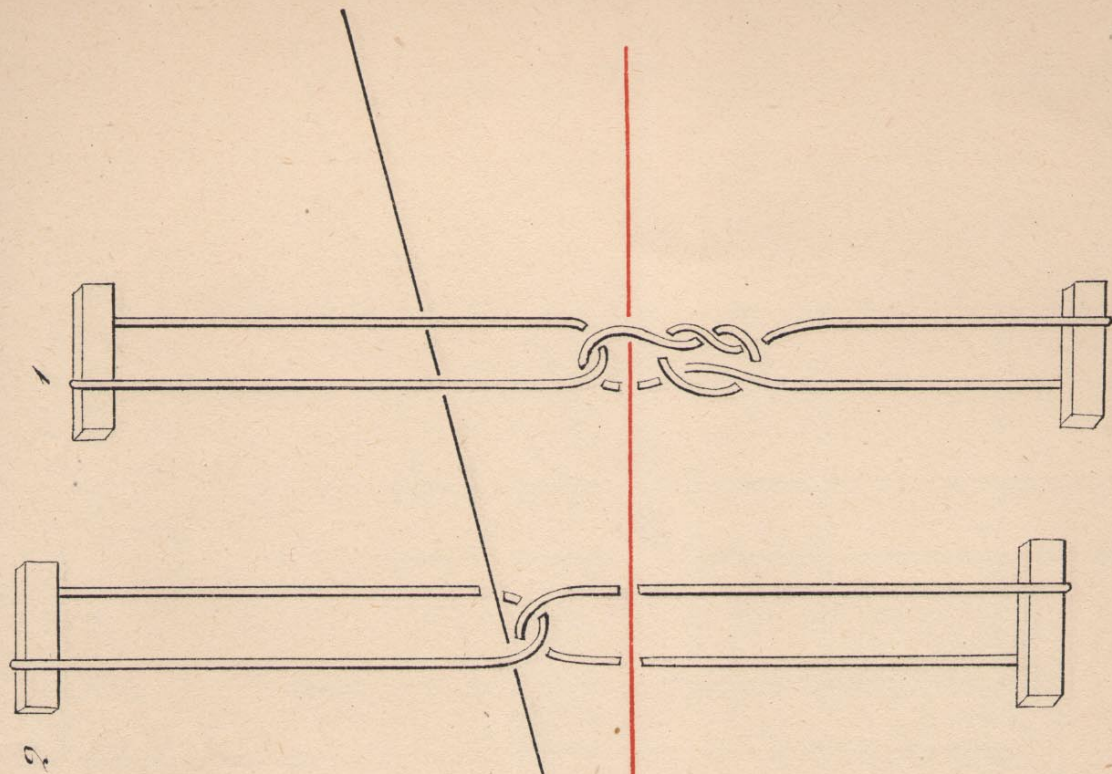
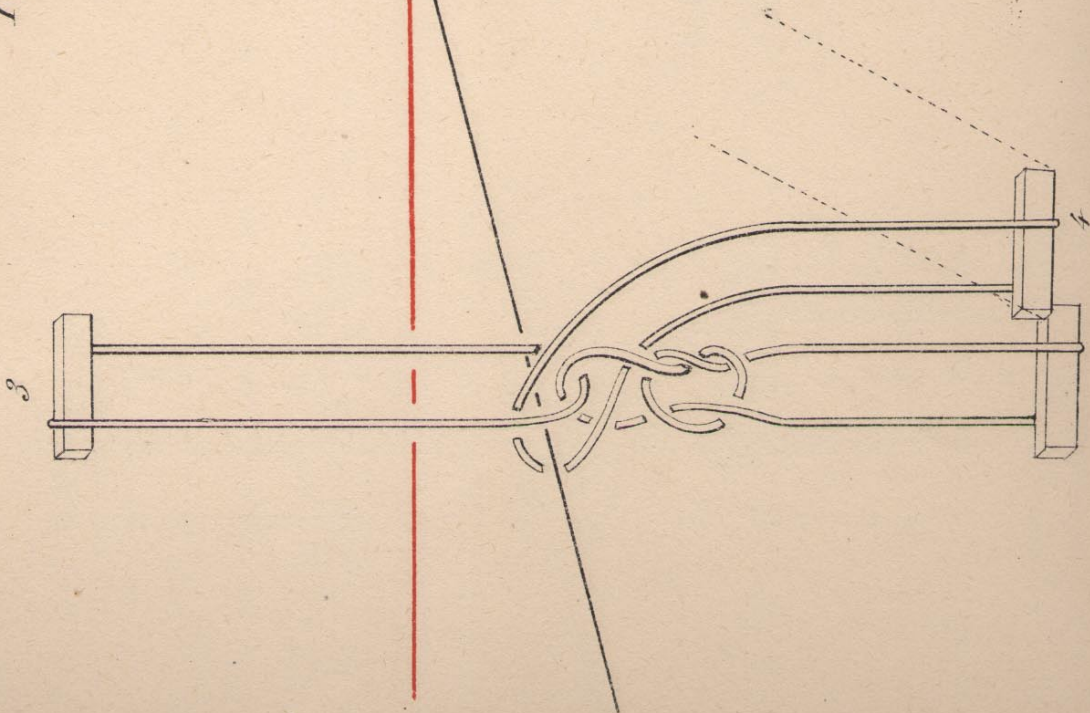
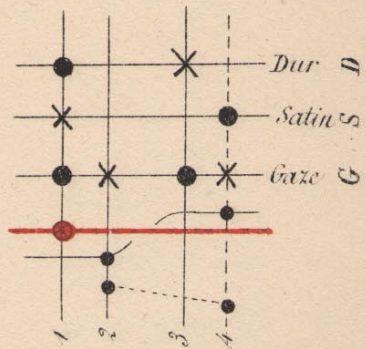


Fig. 165.

Fig. 165.⁽²⁾



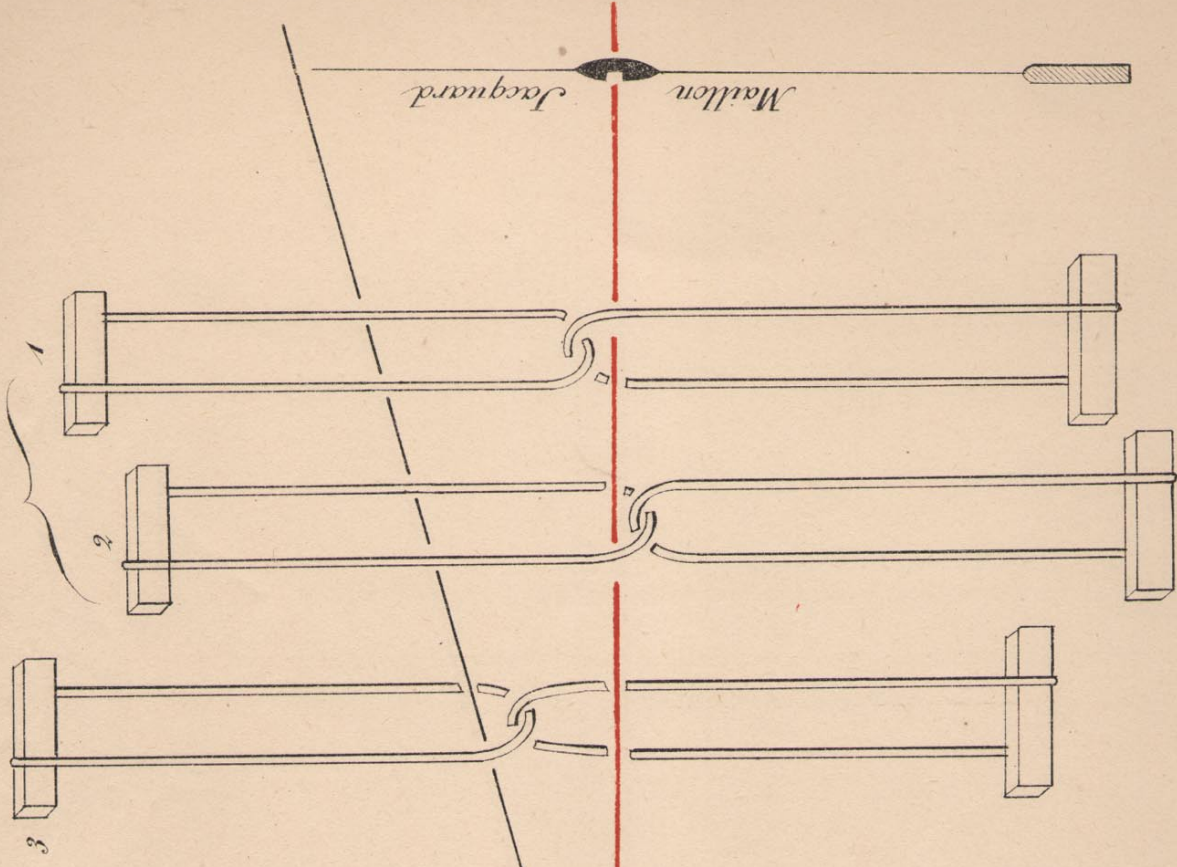
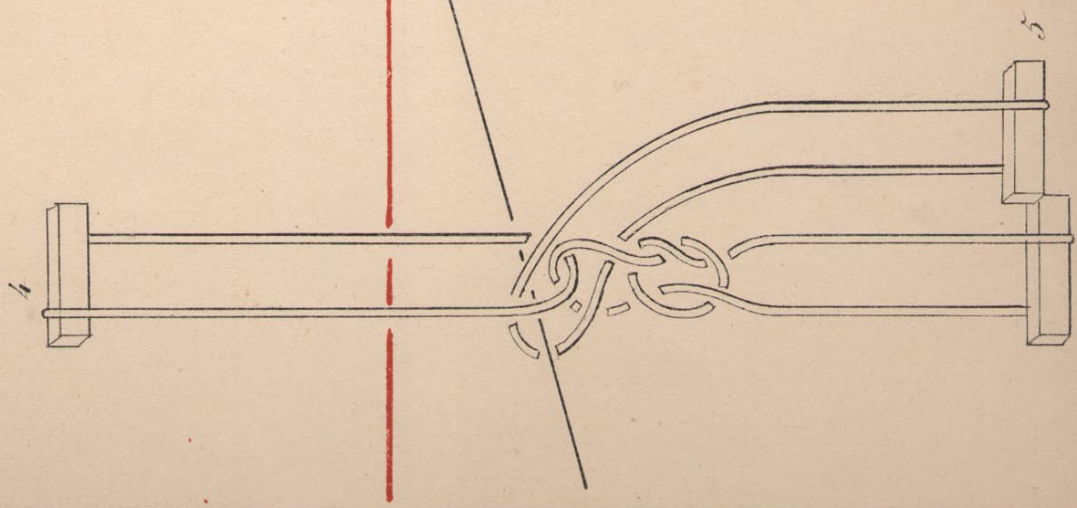
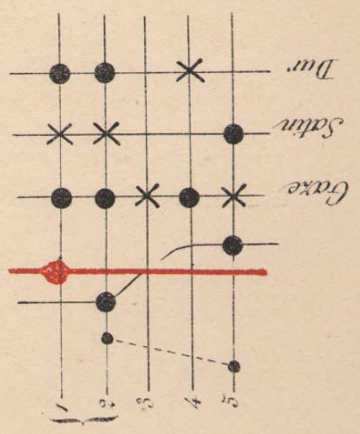


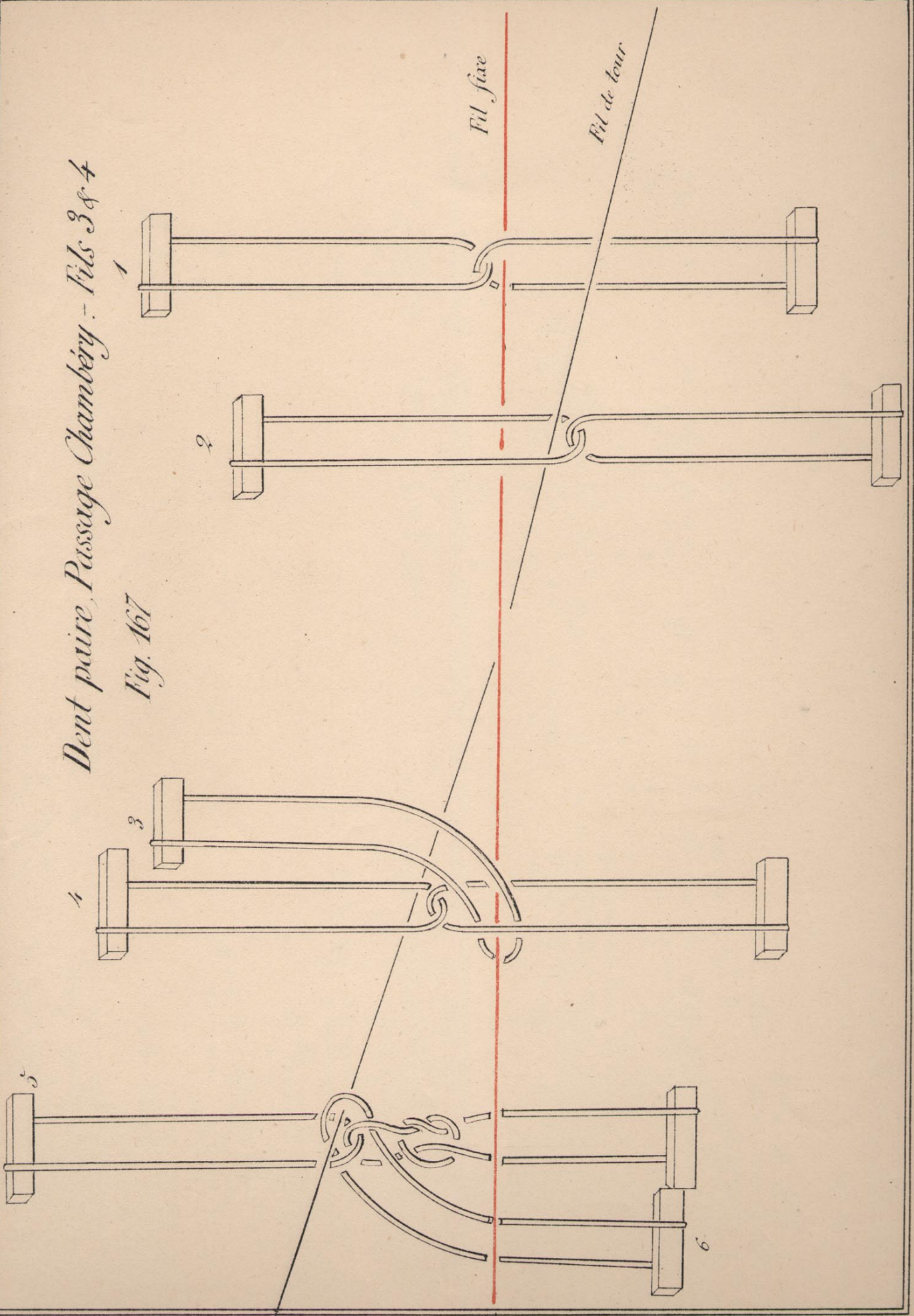
Fig. 166.

Fig. 166 (2)

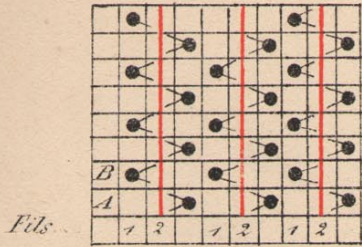


Dent paire, Passage Chambéry - Fils 3 & 4

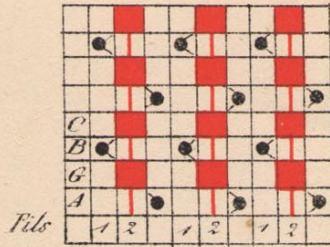
Fig. 167



Gaze
Fig. 163



Satin 3 pas
Fig. 163



Gaze passage Chambéry
Fig. 167

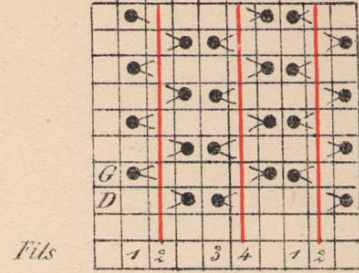


Fig. 167

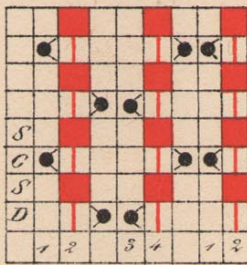
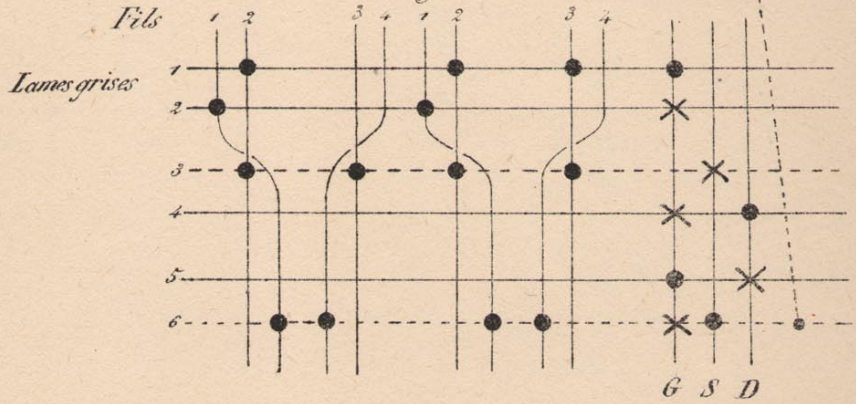


Fig. 167



Gaze Bluterie
Fig. 168

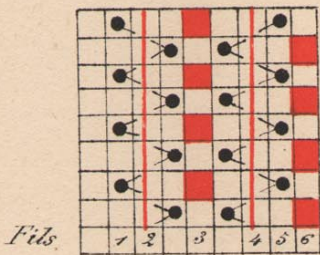


Fig. 168

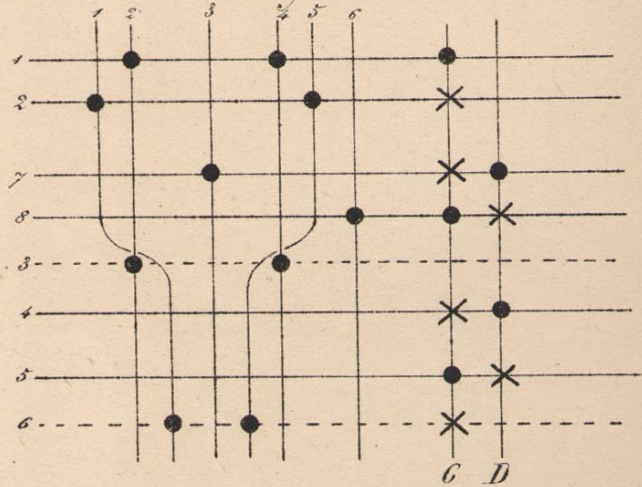
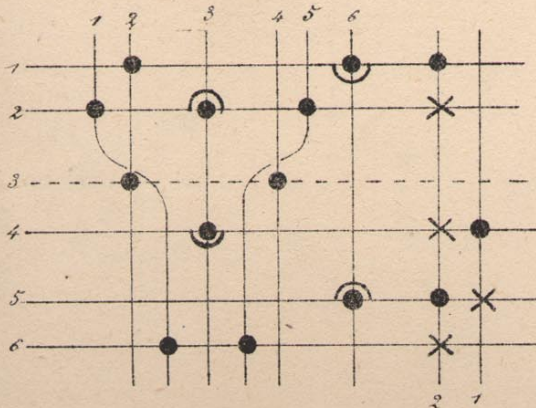
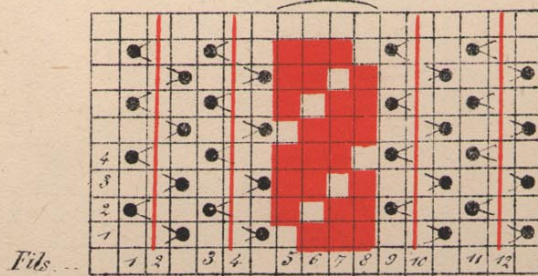


Fig. 168⁽²⁾



Gaze et Sergé de 3 le 4
Fig. 169



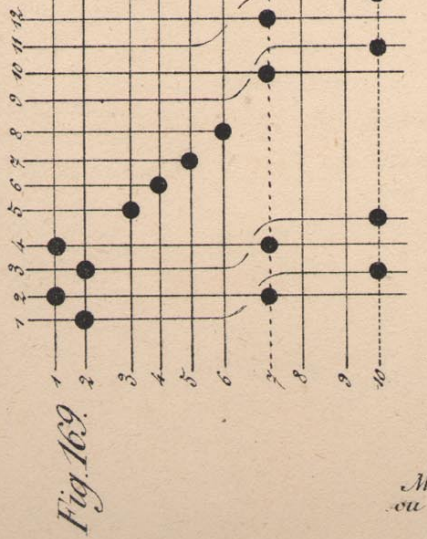
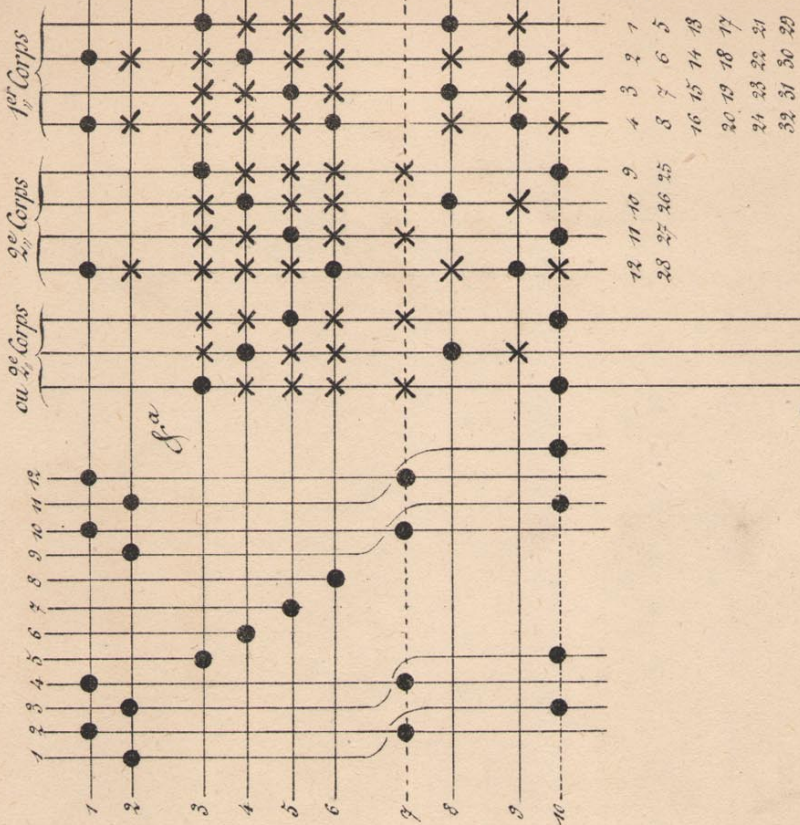


Fig. 169.

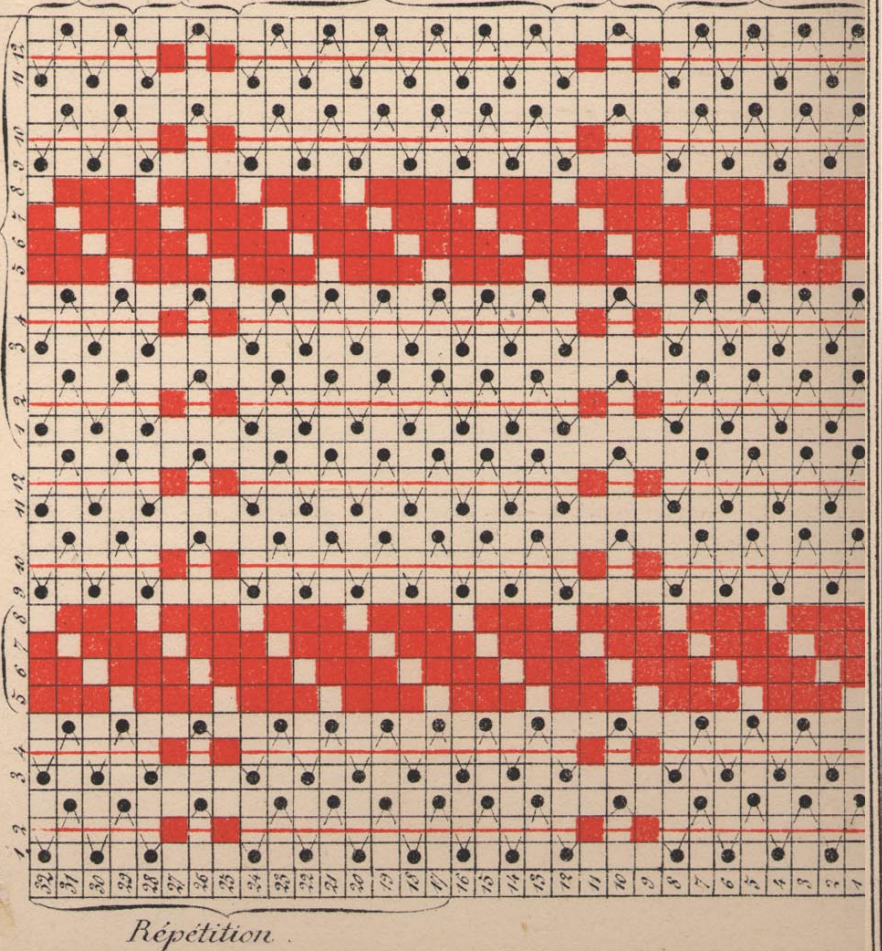
Fig. 170



Marches ou suite

Fig. 170

Corps de Marches



Répétition

12 11 10 9 4 3 2 1
 28 27 26 25 8 7 6 5
 16 15 14 13
 20 19 18 17
 24 23 22 21
 32 31 30 29

9 10 11
 25 26 27

4 3 2 1
 8 7 6 5
 12
 16 15 14 13
 20 19 18 17
 24 23 22 21
 28
 32 31 30 29

ou

1er Corps

2e Corps

1er Corps

2e Corps

1er Corps

Fig. 171

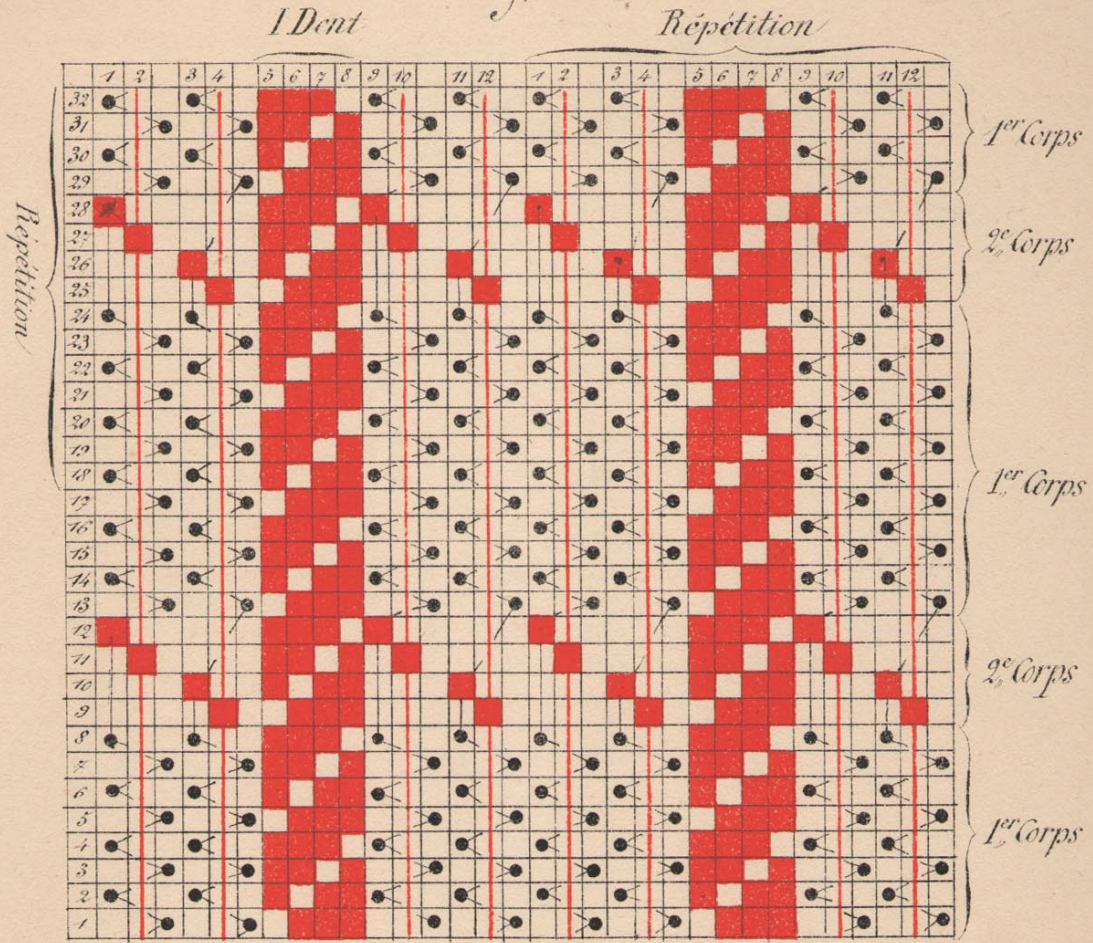


Fig. 171

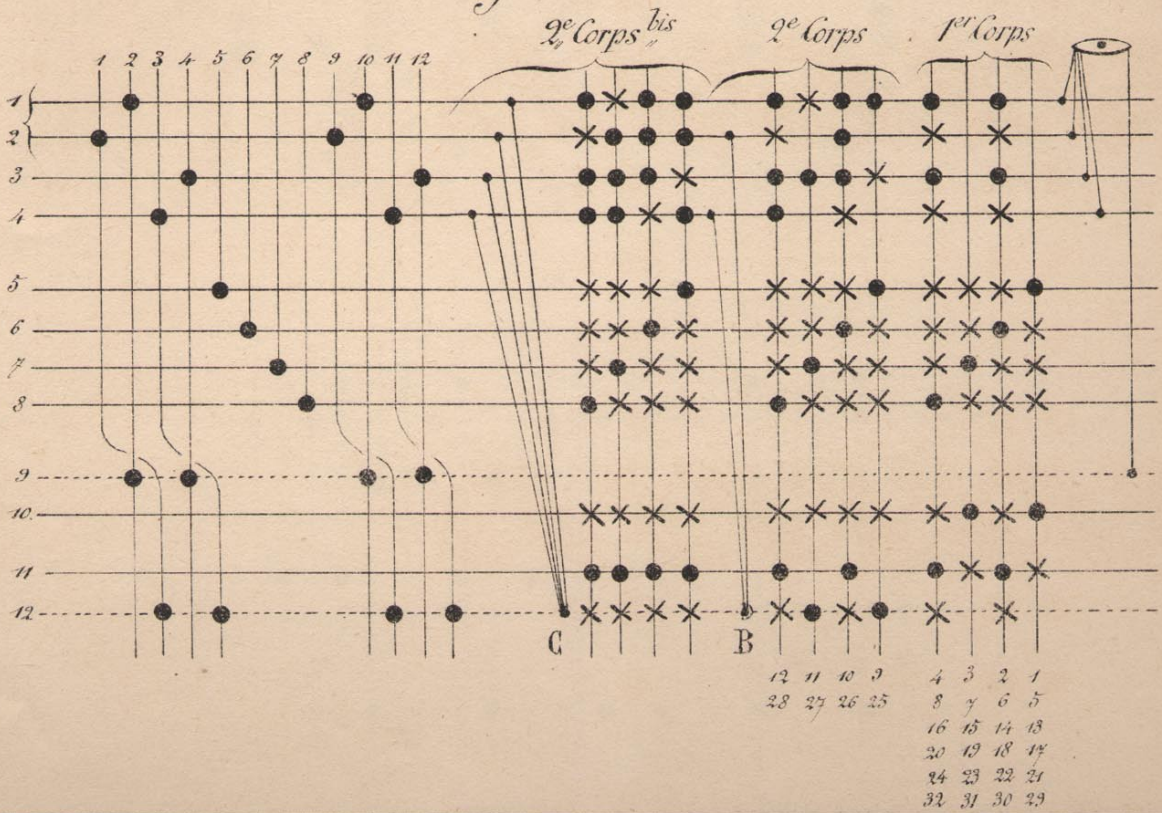


Fig. 172

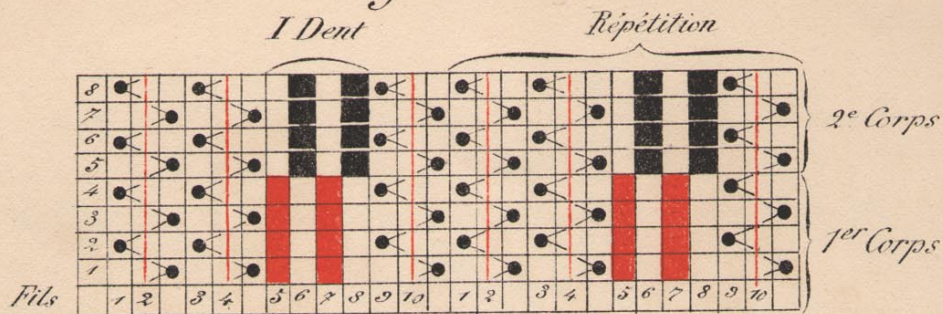


Fig. 172

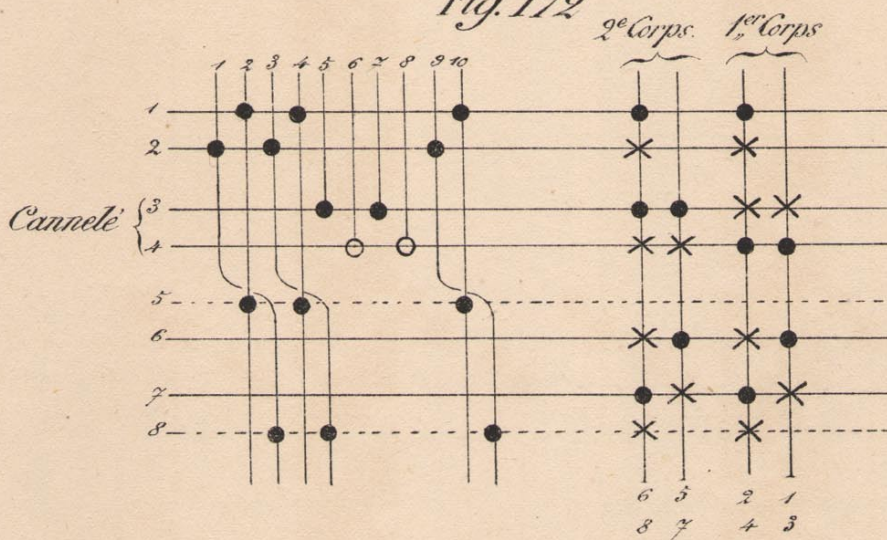


Fig. 173

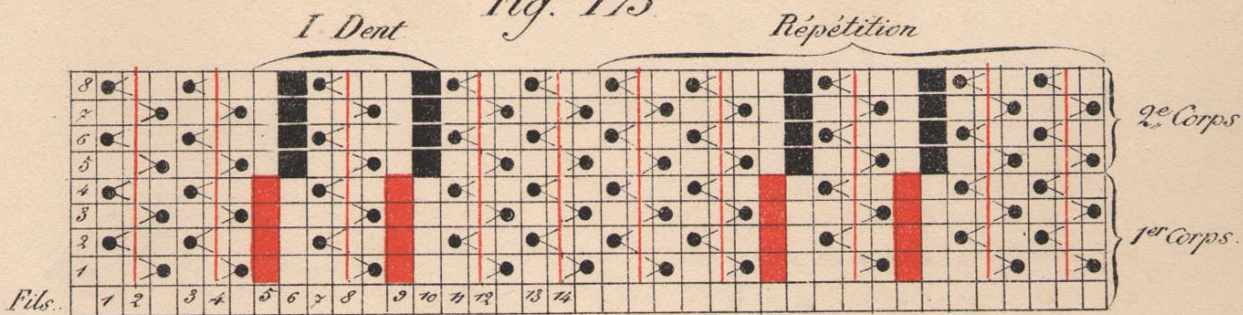


Fig. 173

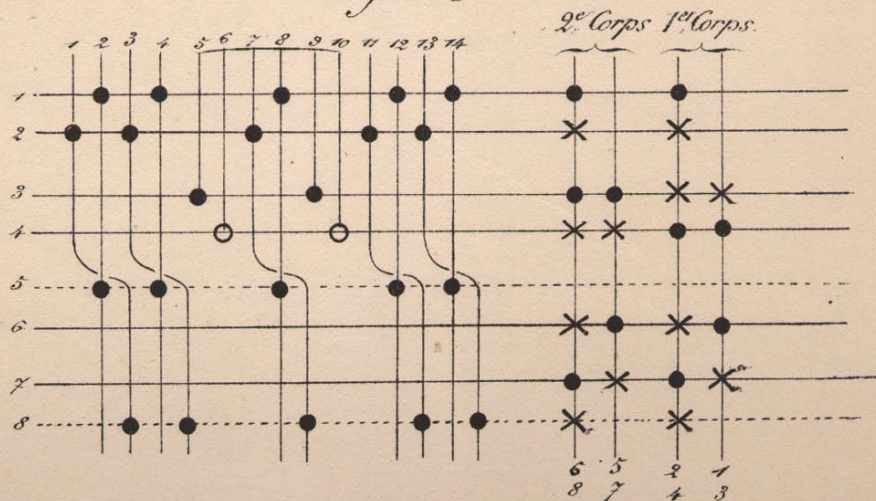
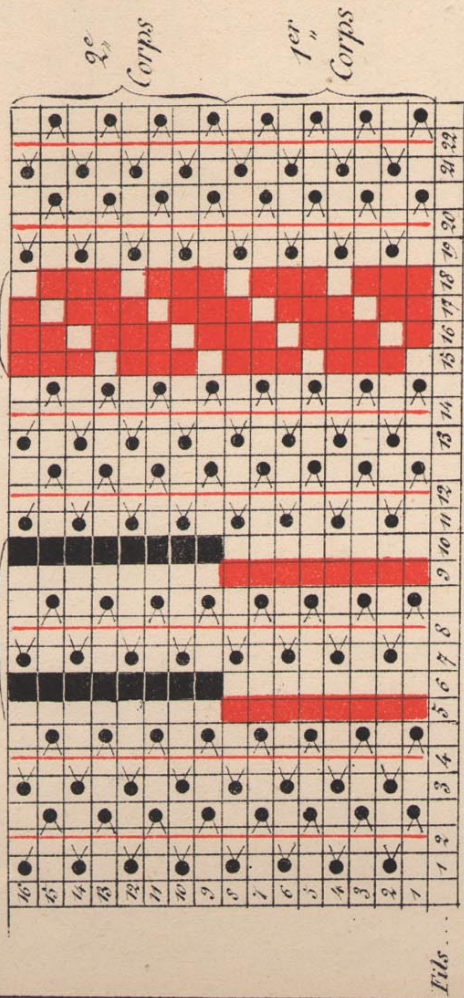


Fig. 174



ou
18 bis

Deux pieds
1^{er} & 3^e
Corps

1^{er} & 9^e
Corps

Fig. 174⁽²⁾

Remettage Fig. 174

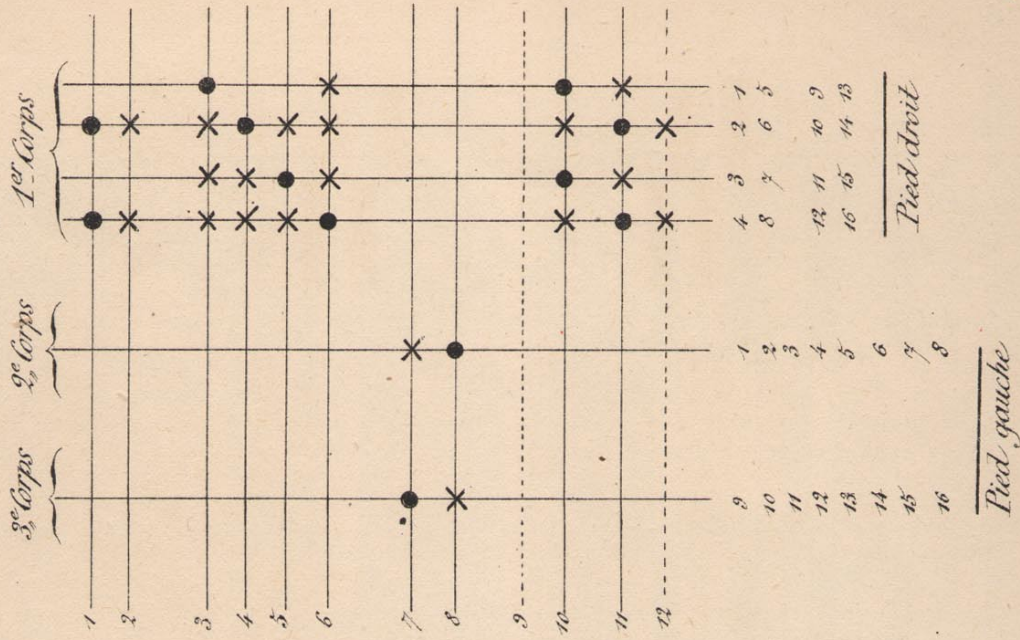
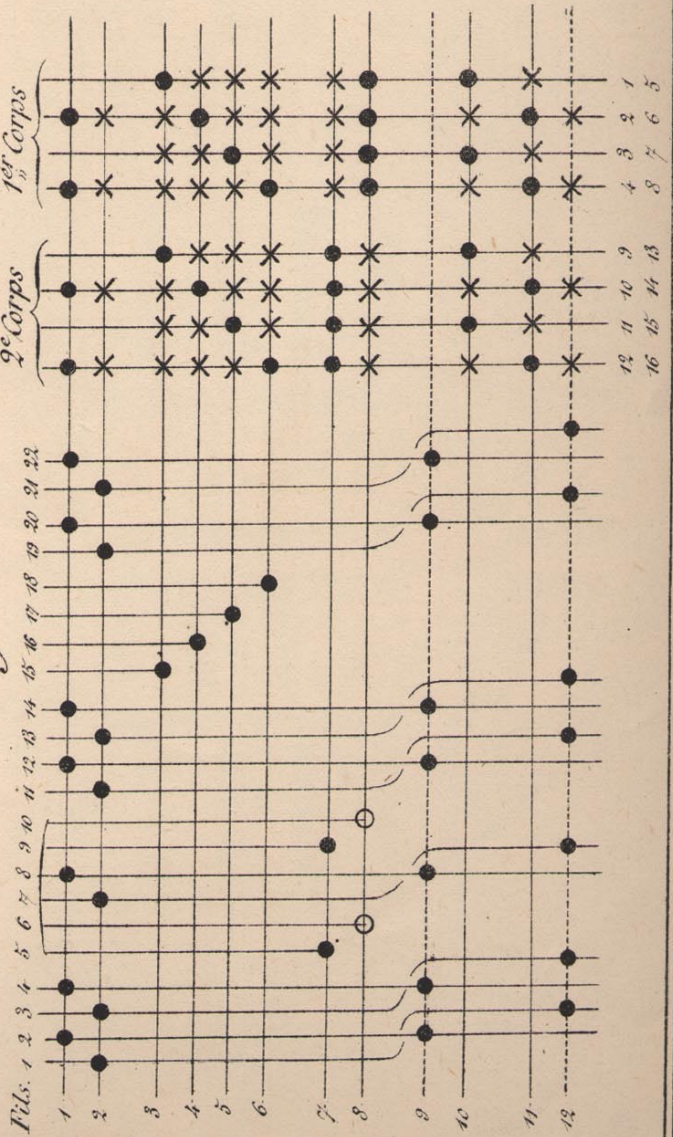


Fig. 174



ou
19 bis

Deux piéds

1^{er} & 5^e
Corps

2^e & 4^e
Corps

1^{er} & 5^e
Corps

1^{er} & 4^e
Corps

1^{er} & 5^e
Corps

1^{er} & 5^e
Corps

1^{er} & 5^e
Corps

1^{er} & 4^e
Corps

2^e
Corps

4^e
Corps

2^e
Corps

1^{er}
Corps

2^e
Corps

1^{er} & 5^e
Corps

2^e
Corps

1^{er}
Corps

I Dent

I Dent

I Dent

Fig. 175

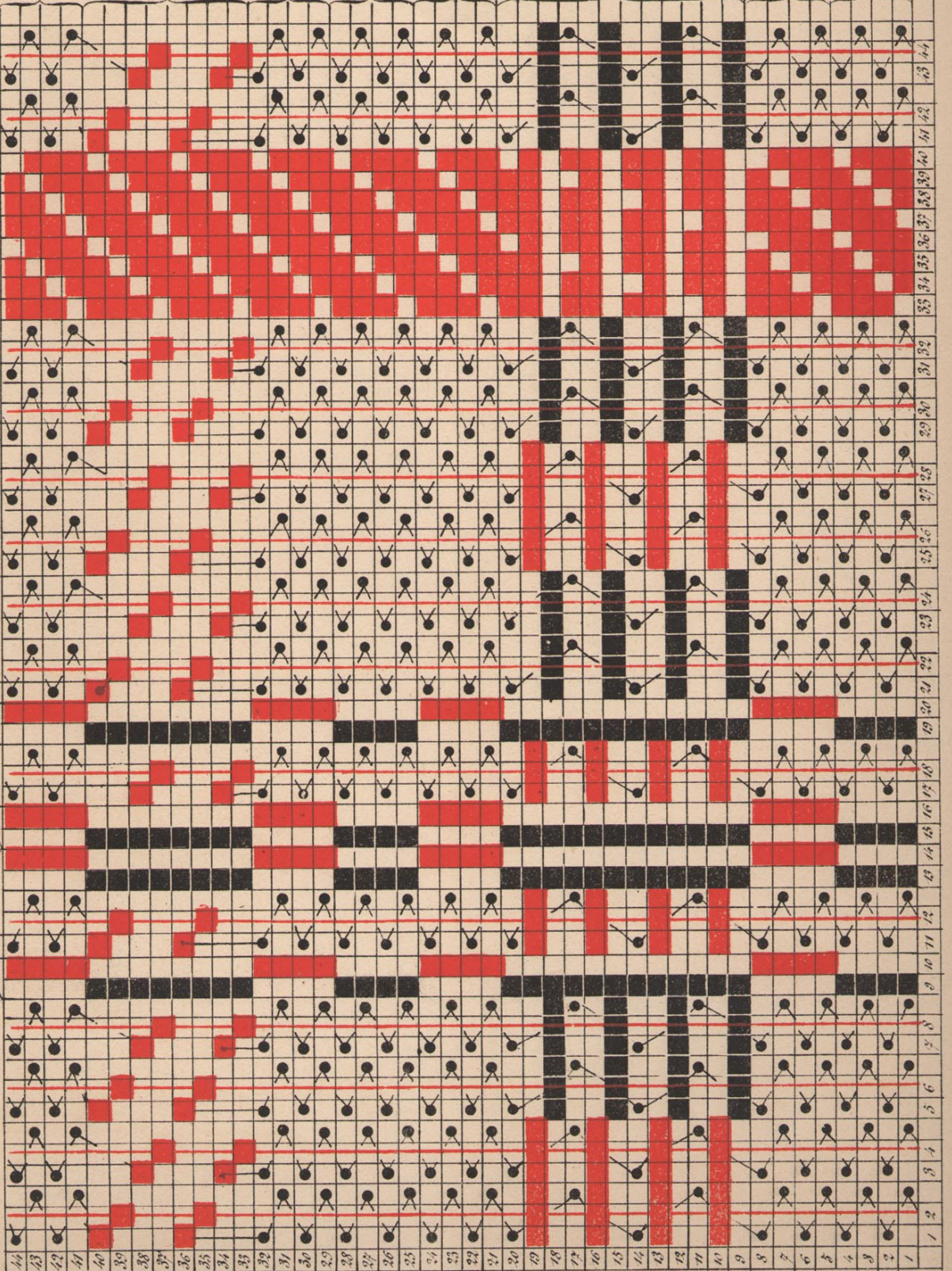


Fig. 175

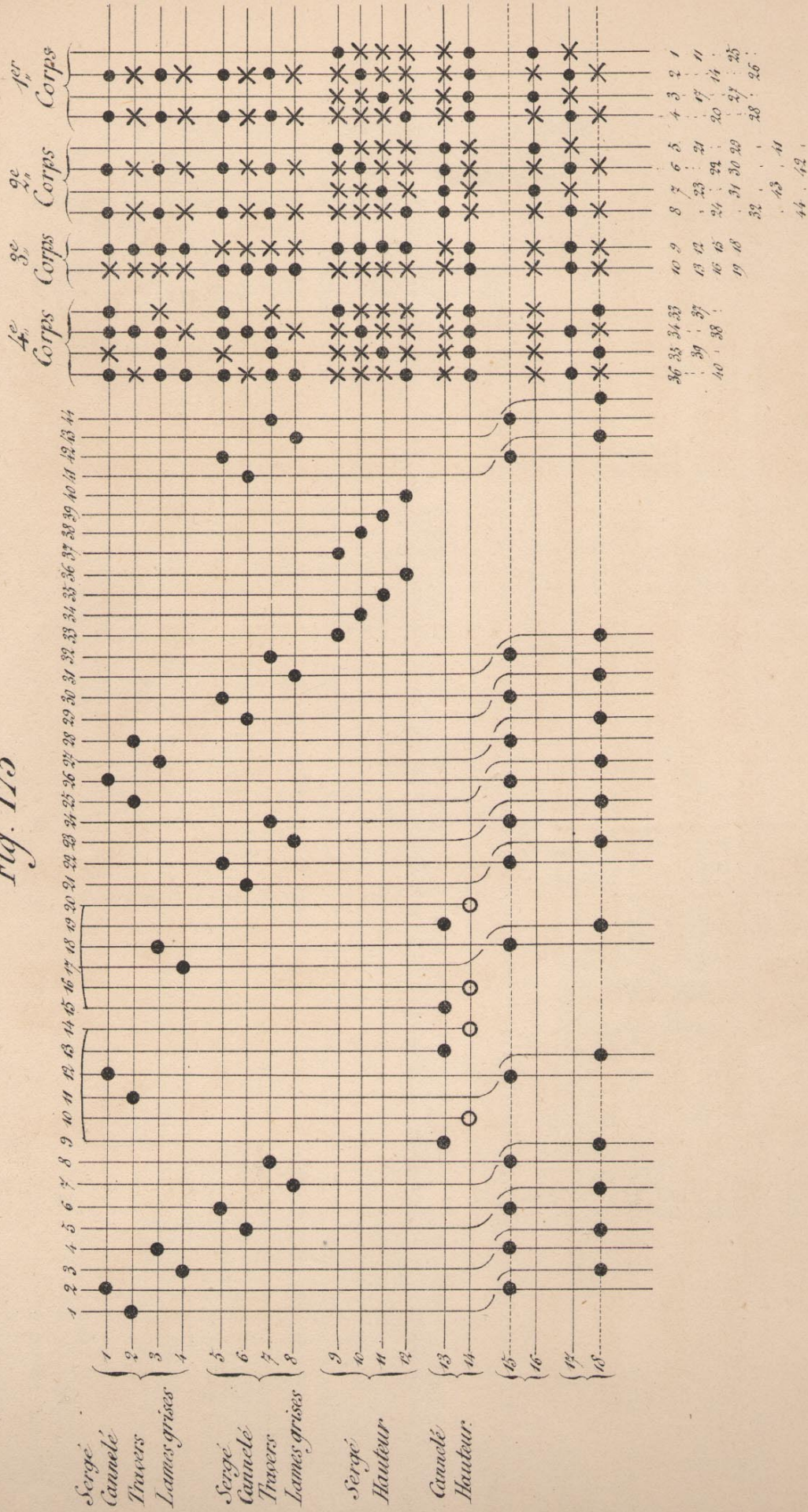
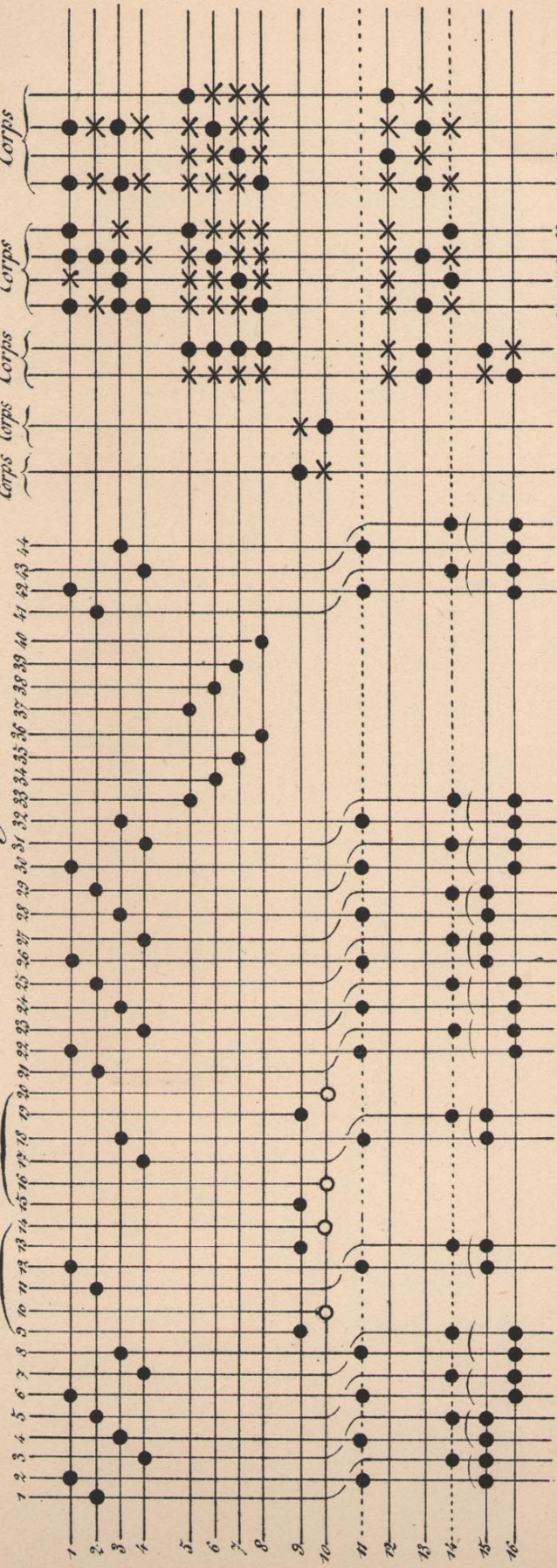


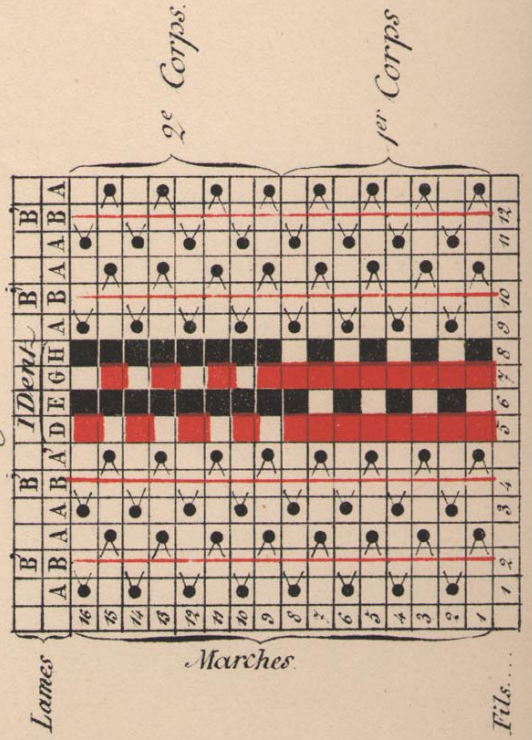
Fig. 175(2)

I Dent I Dent



- 5^e Corps: 1, 2, 3, 4, 5, 6, 7, 8, 9, 10, 11, 12, 13, 14, 15, 16, 17, 18, 19, 20, 21, 22, 23, 24, 25, 26, 27, 28, 29, 30, 31, 32, 33, 34, 35, 36, 37, 38, 39, 40, 41, 42, 43, 44
- 4^e Corps: 1, 2, 3, 4, 5, 6, 7, 8, 9, 10, 11, 12, 13, 14, 15, 16, 17, 18, 19, 20, 21, 22, 23, 24, 25, 26, 27, 28, 29, 30, 31, 32, 33, 34, 35, 36, 37, 38, 39, 40, 41, 42, 43, 44
- 3^e Corps: 1, 2, 3, 4, 5, 6, 7, 8, 9, 10, 11, 12, 13, 14, 15, 16, 17, 18, 19, 20, 21, 22, 23, 24, 25, 26, 27, 28, 29, 30, 31, 32, 33, 34, 35, 36, 37, 38, 39, 40, 41, 42, 43, 44
- 2^e Corps: 1, 2, 3, 4, 5, 6, 7, 8, 9, 10, 11, 12, 13, 14, 15, 16, 17, 18, 19, 20, 21, 22, 23, 24, 25, 26, 27, 28, 29, 30, 31, 32, 33, 34, 35, 36, 37, 38, 39, 40, 41, 42, 43, 44
- 1^{er} Corps: 1, 2, 3, 4, 5, 6, 7, 8, 9, 10, 11, 12, 13, 14, 15, 16, 17, 18, 19, 20, 21, 22, 23, 24, 25, 26, 27, 28, 29, 30, 31, 32, 33, 34, 35, 36, 37, 38, 39, 40, 41, 42, 43, 44

Fig. 176



Fils...

Fig. 176

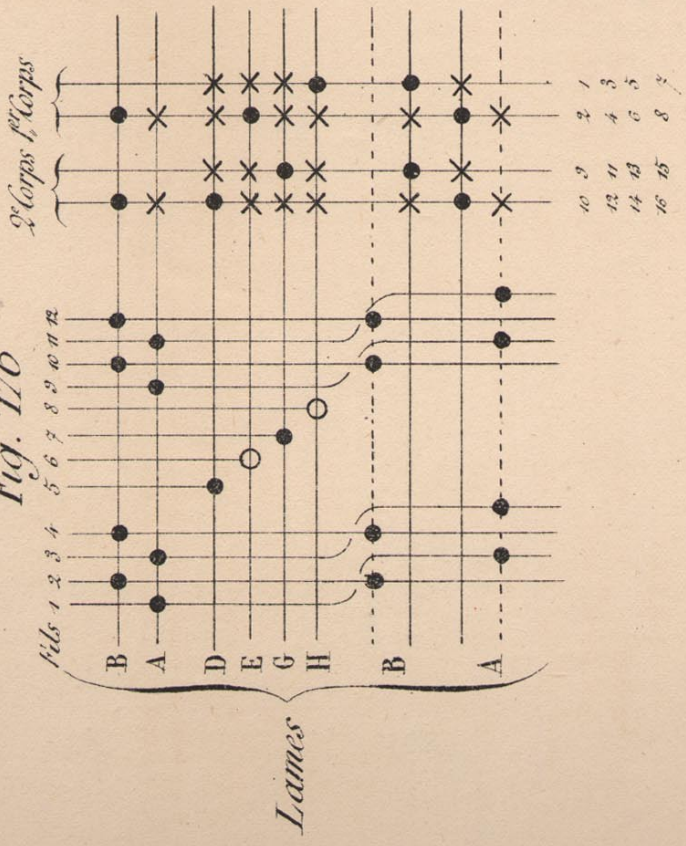


Fig. 177

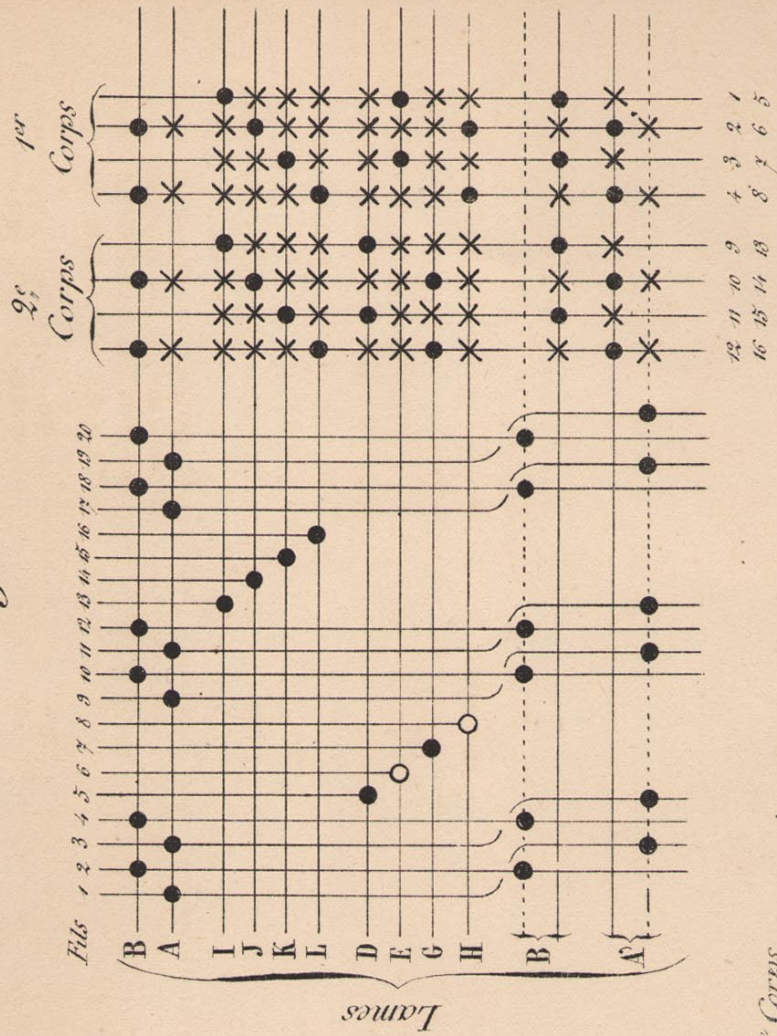


Fig. 177

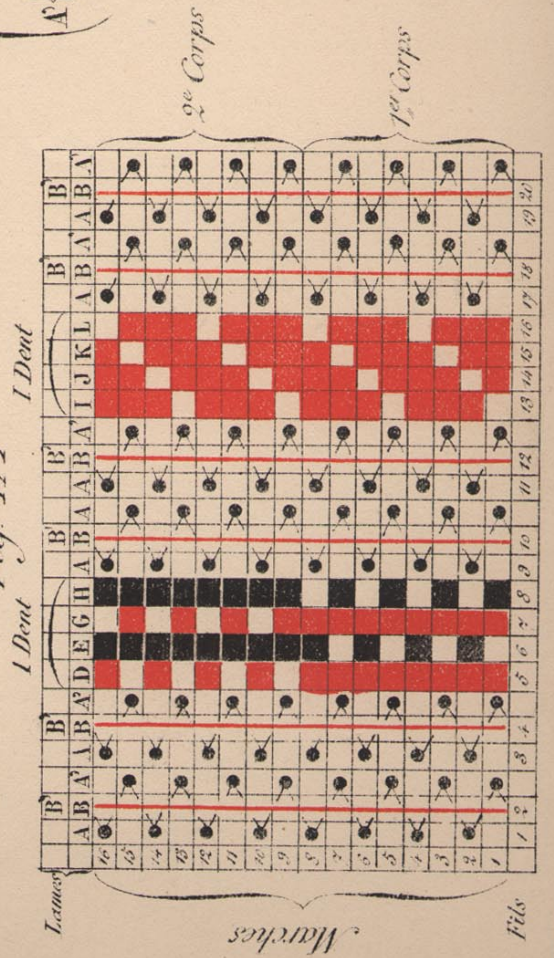


Fig. 178.

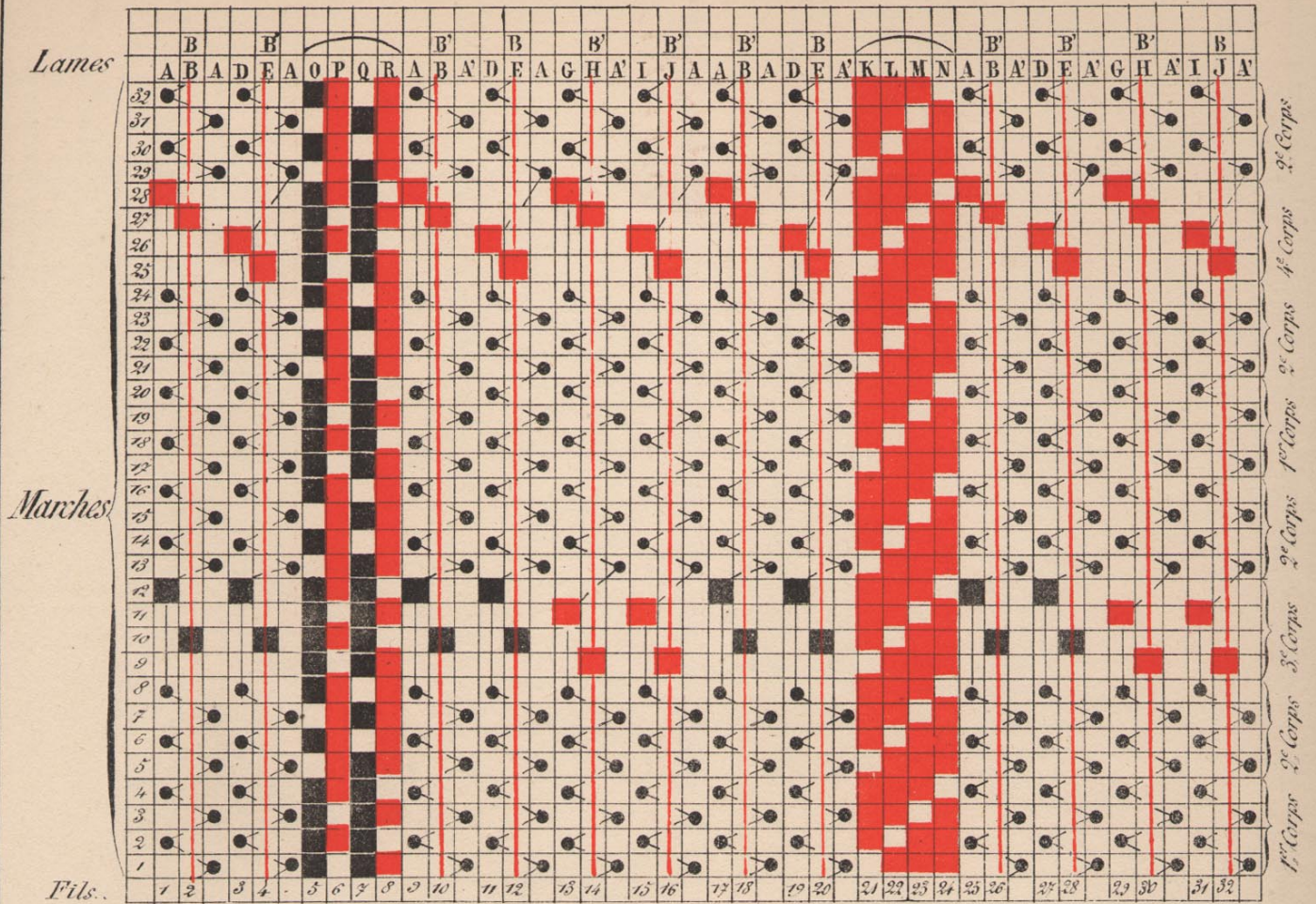


Fig. 178.

Fils: 1 2 3 4 5 6 7 8 9 10 11 12 13 14 15 16 17 18 19 20 21 22 23 24 25 26 27 28 29 30 31 32

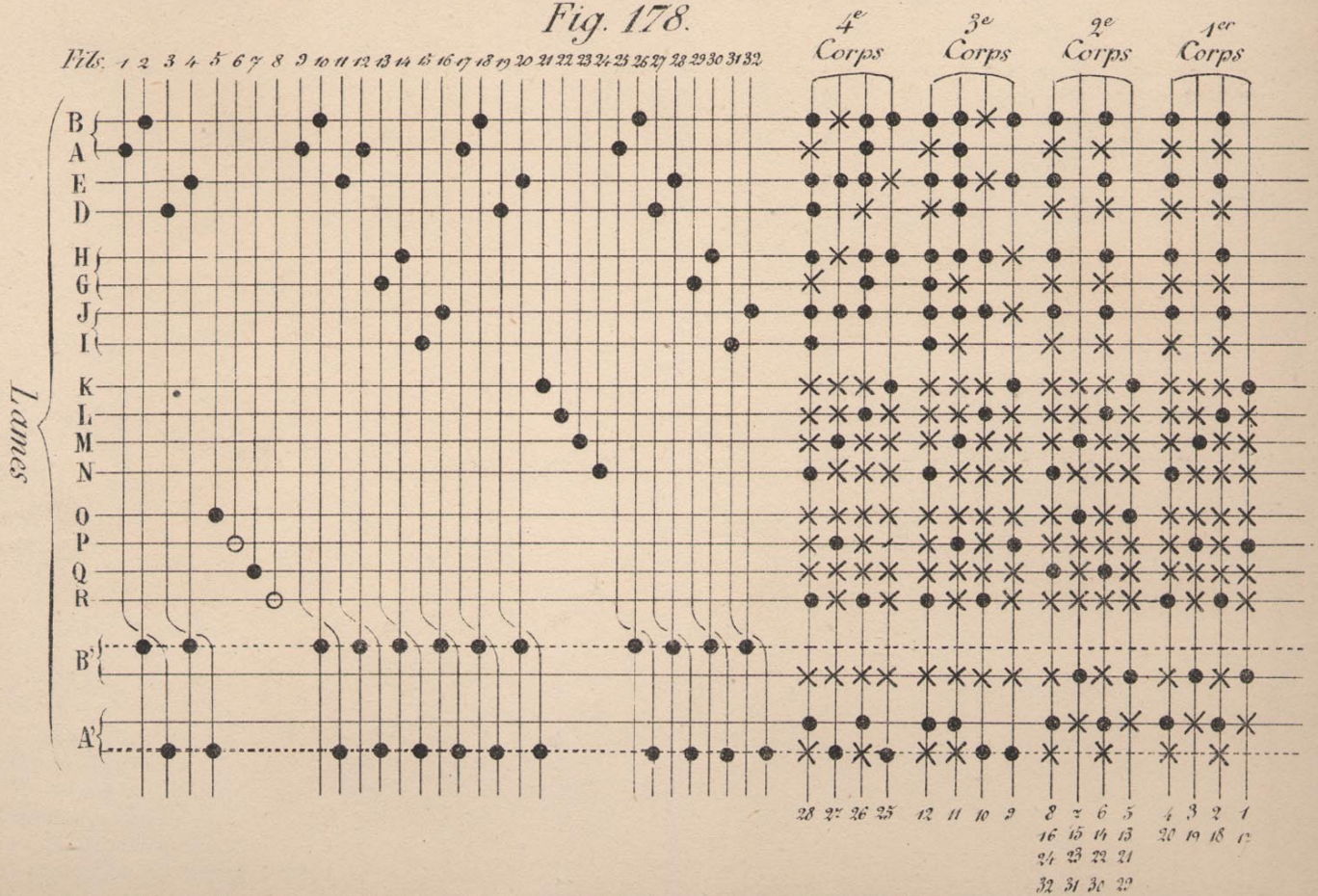


Fig. 179. Effet broché sur fond Gaze

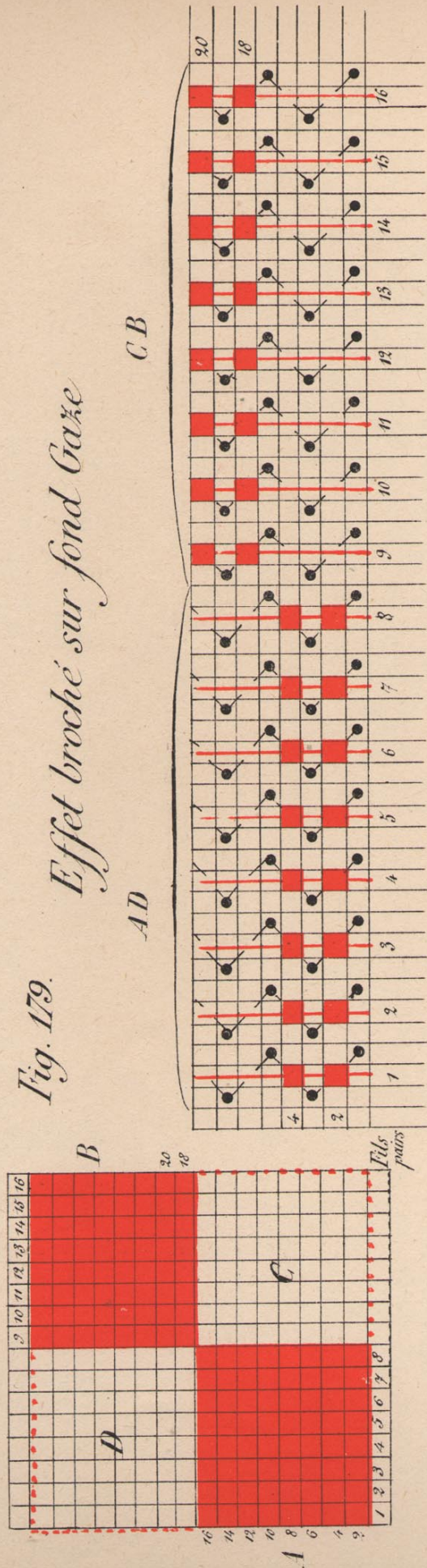
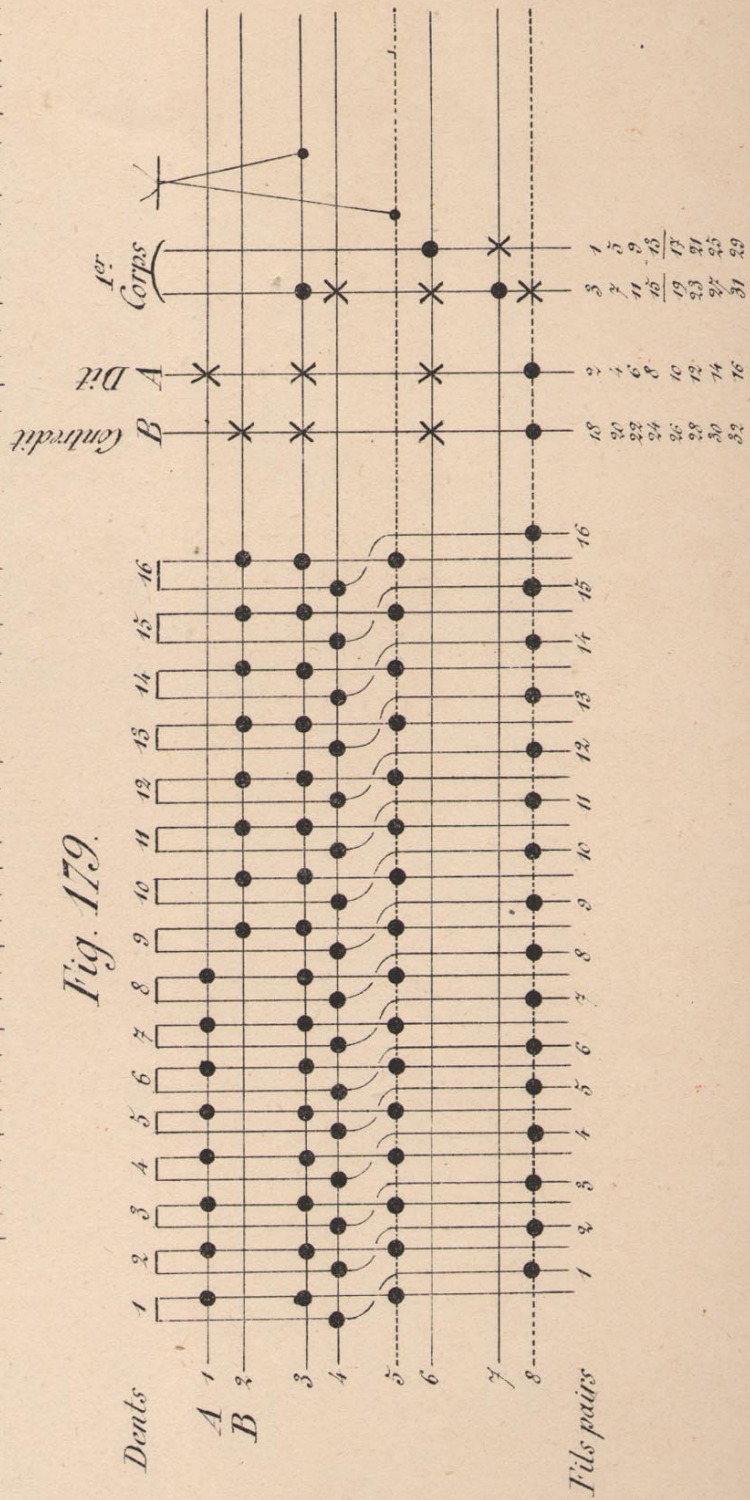


Fig. 179.



Gaze damassée avec fils saurs

Fig. 180.

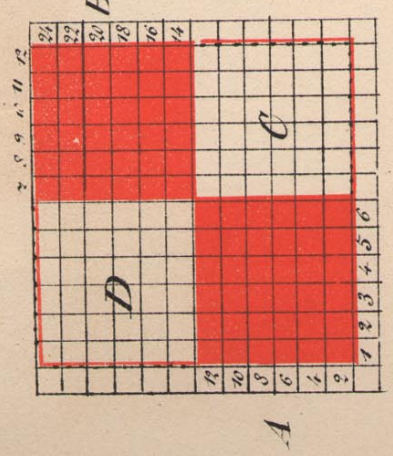
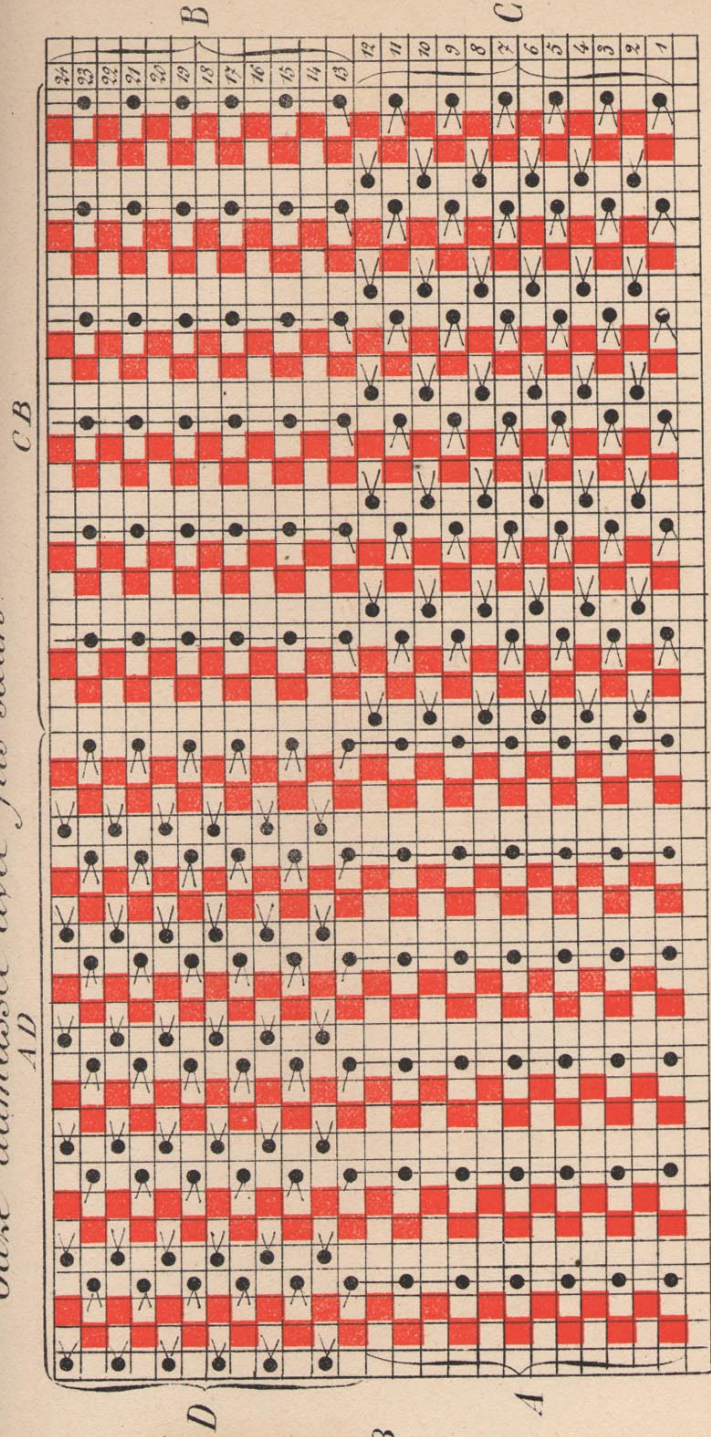


Fig. 180.

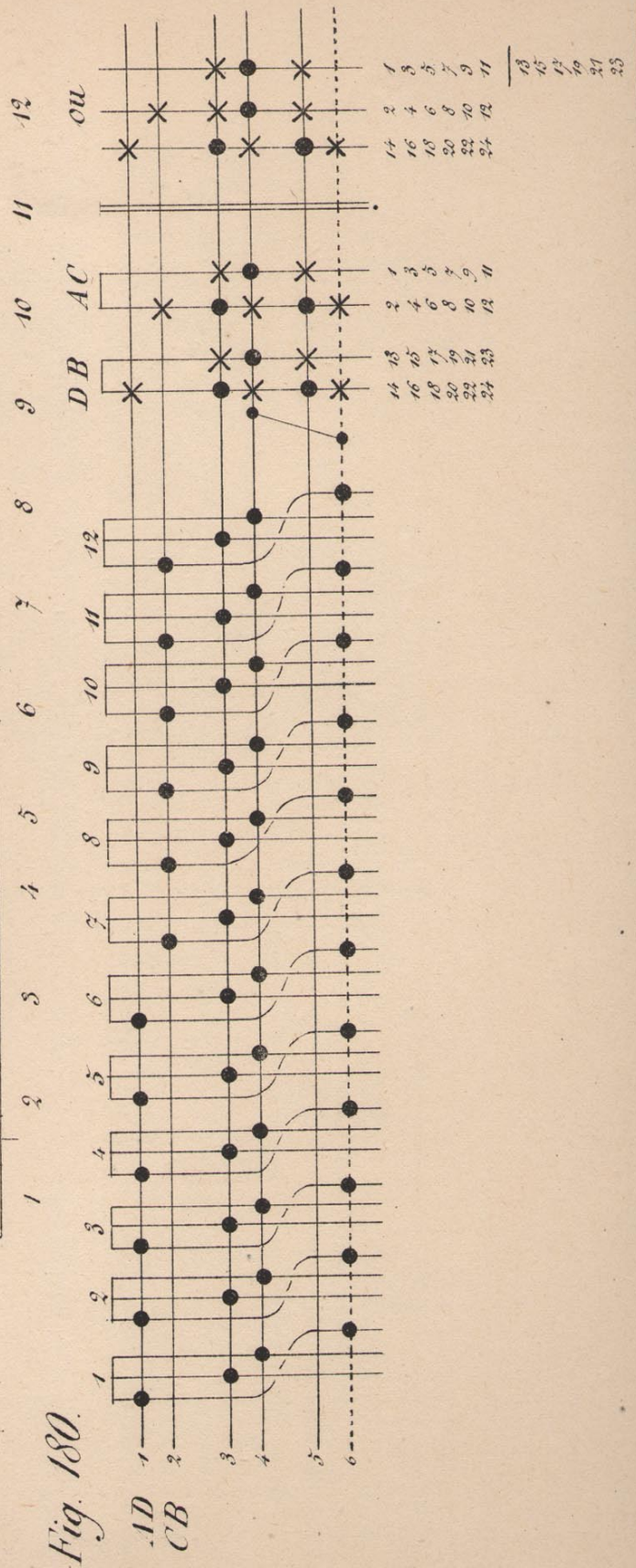


Fig. 181

Gaze damassée sans fils sœurs

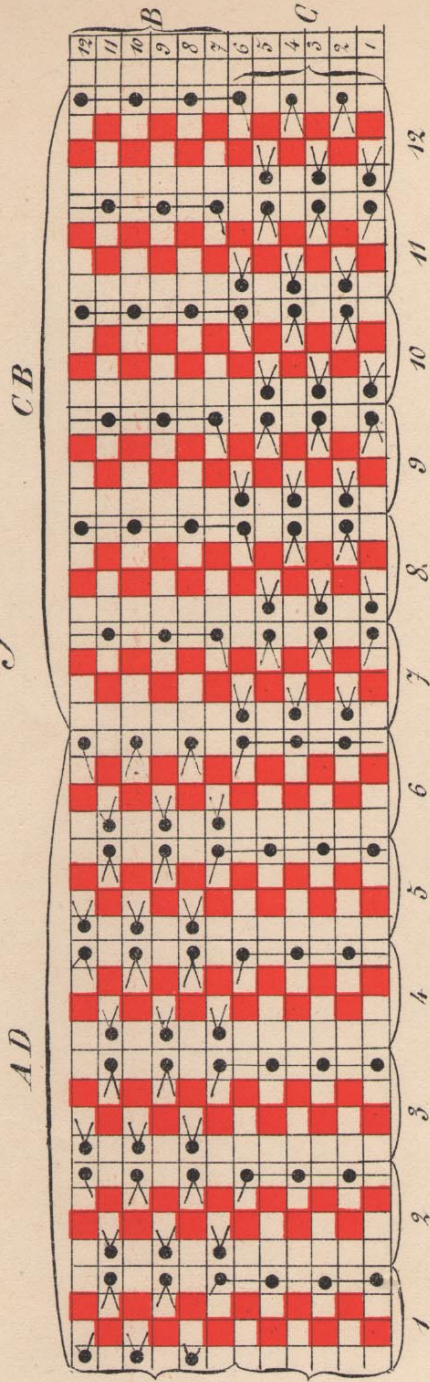
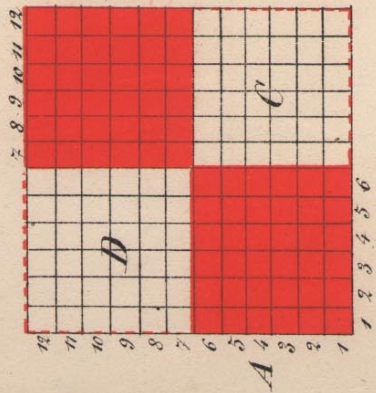


Fig. 181

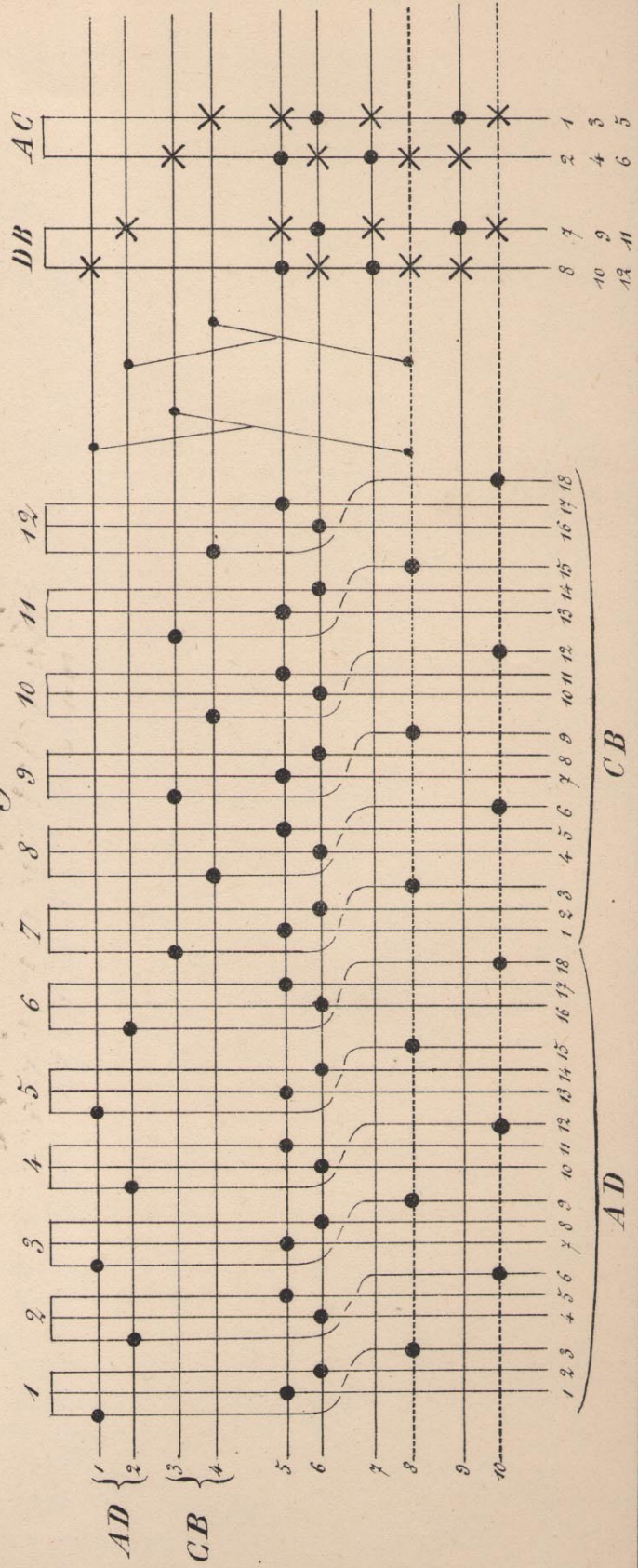


Fig. 182

Fig. 182

Damassé Satin de 5

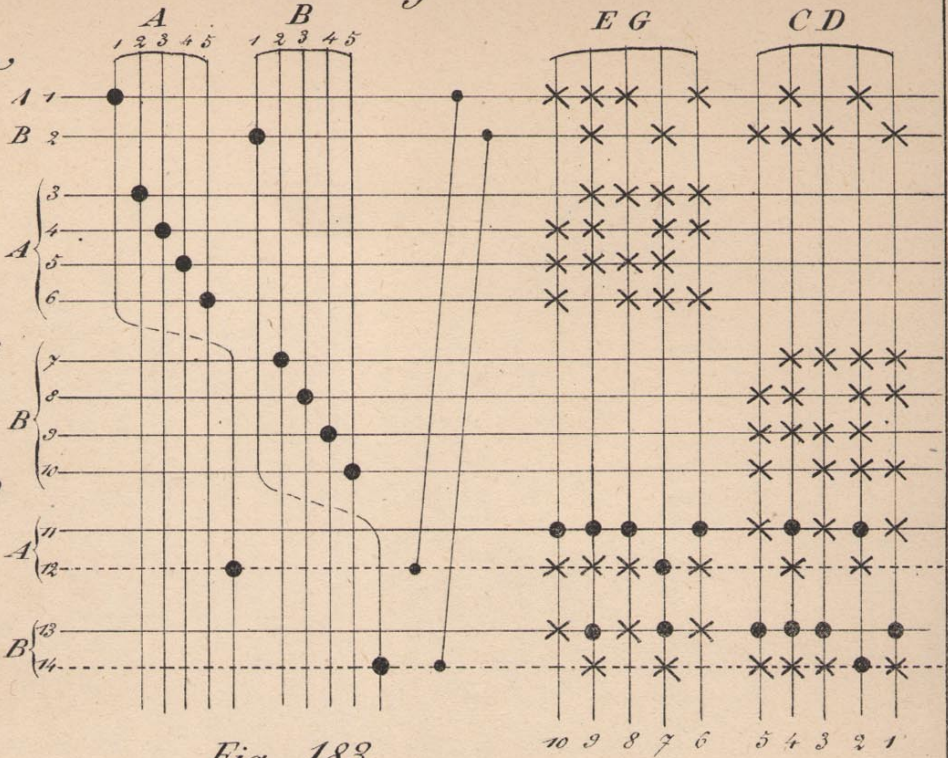
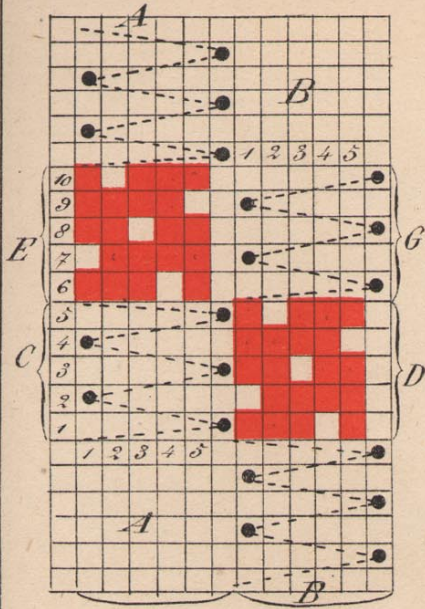


Fig. 183.

Gaze Léphir

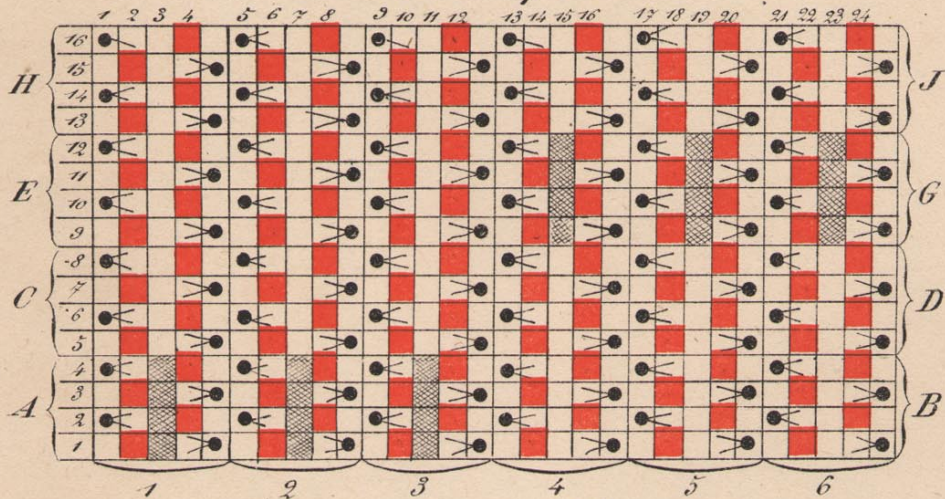
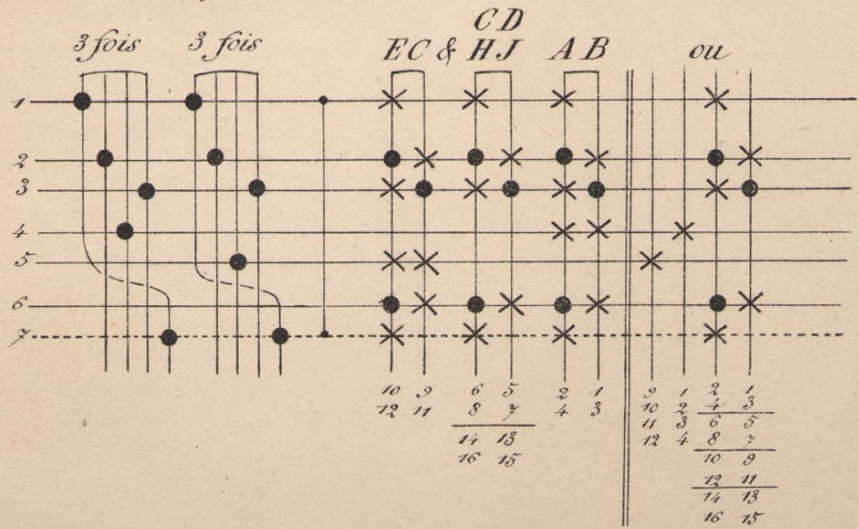
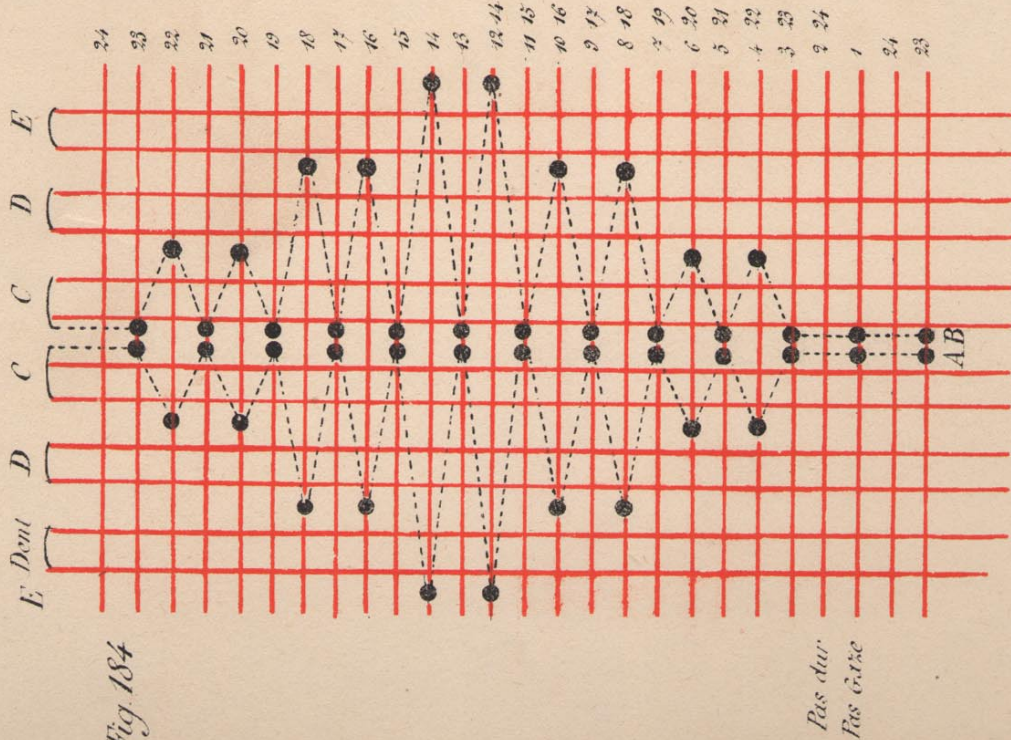


Fig. 183.



Effet fantaisie à Perles, dessous fond gaze.

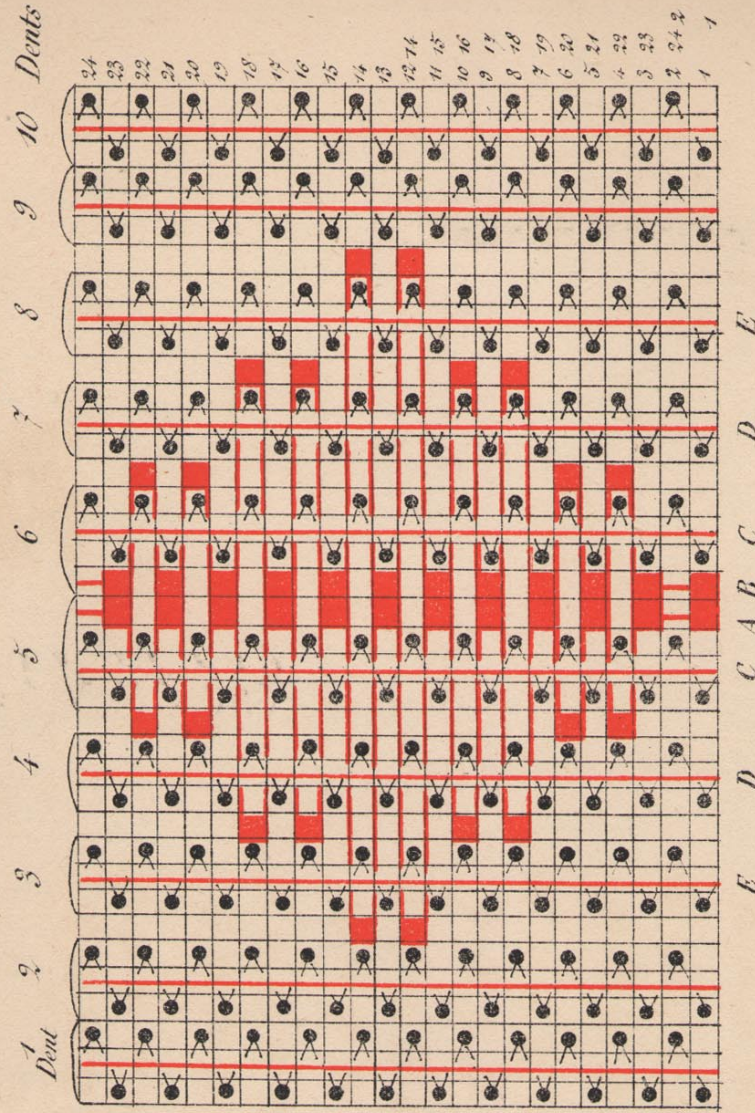
Fig. 184



*Pas dur
Pas à l'axe*

Fig. 185

Analyse dessin Fantaisie ou à Perles



Marchure à Retour