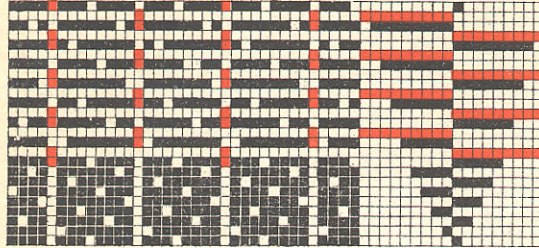


# Pl. VII

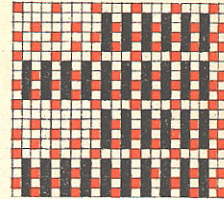
C

Broché sur satin



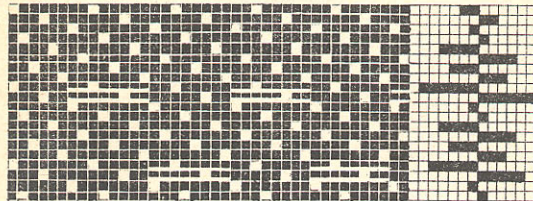
H

Epinglé façonné



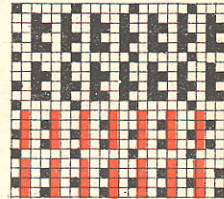
D

Pas forcé



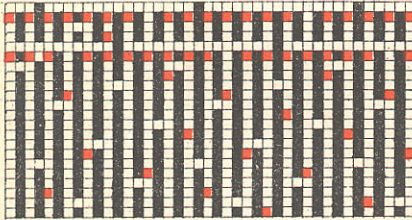
I

Epinglé doubleté



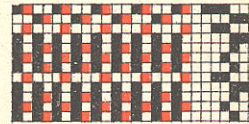
F

Broché sur satin tubulaire



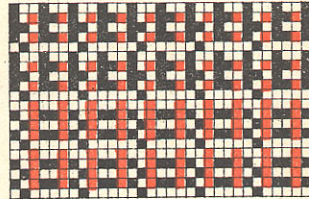
J

Epinglé fils doubles et simples



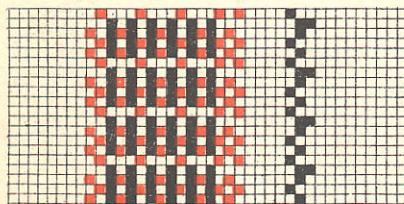
K

Epinglé double chaîne



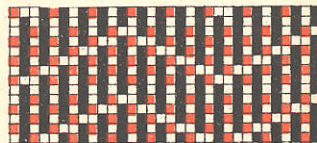
G

Epinglé

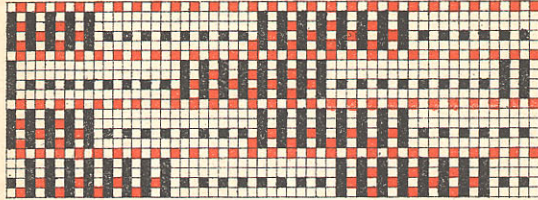


L

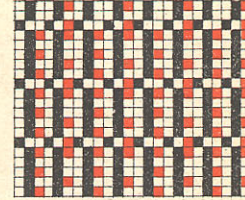
Epinglé mouvementé



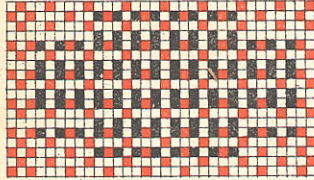
A Epinglé damassé ou à effet de trame



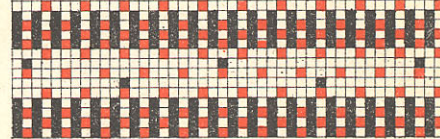
B Epinglé double face



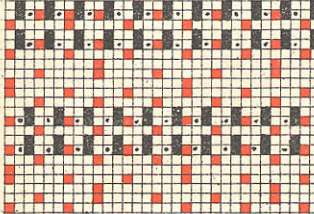
G Façonné velours sur taffetas



C Epinglé broché



H Velours broché



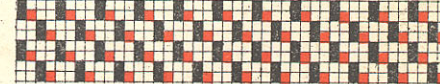
D Velours de montagne



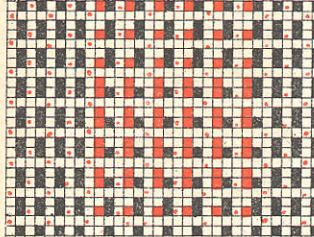
D' Velours d'Allemagne



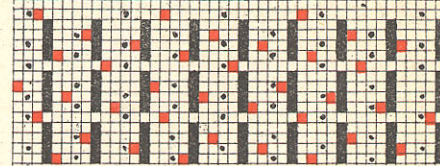
D'' Velours de Lyon (Chassant)



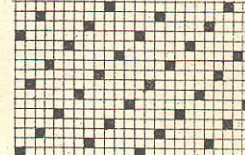
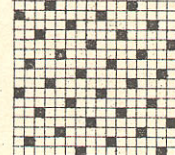
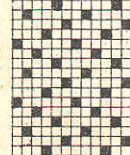
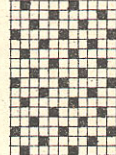
F Façonné velours sur velours



I Epinglé envers satin



J K Satins de 4, 5, 6, 8 et 12 lissés



4

5

6

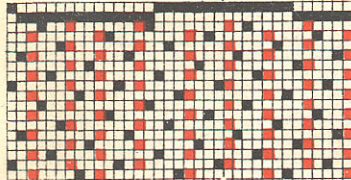
8

12

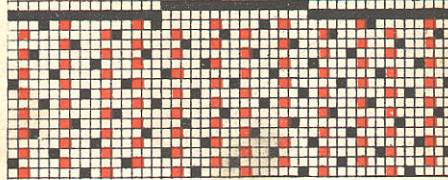
# SATINS SANS APPRÊTS ENTRELACÉS

Pl. IX

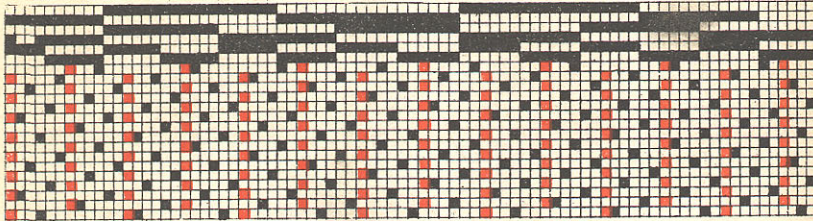
**B** Passage irrégulier



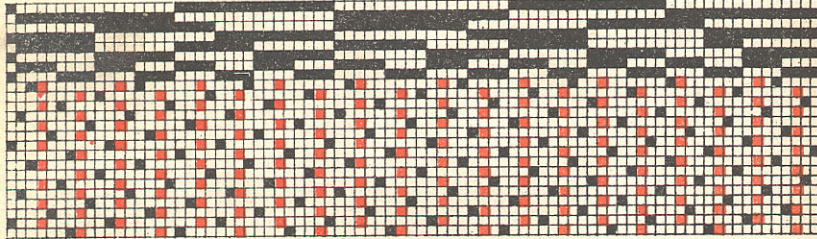
**D** Entrelaçage irrégulier



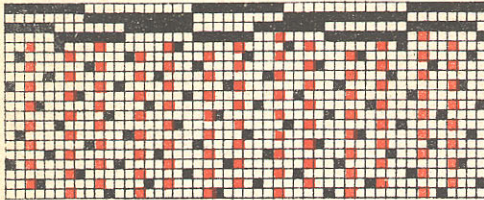
**C** 5 fils satin et 1 taffetas



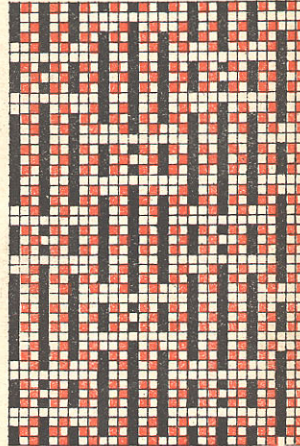
**A** Entrelacé par 3 fils satin et 1 taffetas



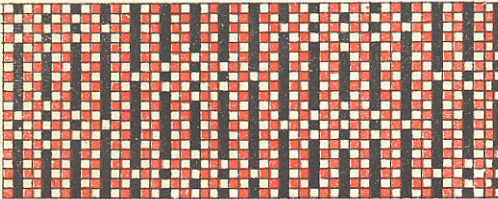
**E** 5 fils satin et 2 taffetas

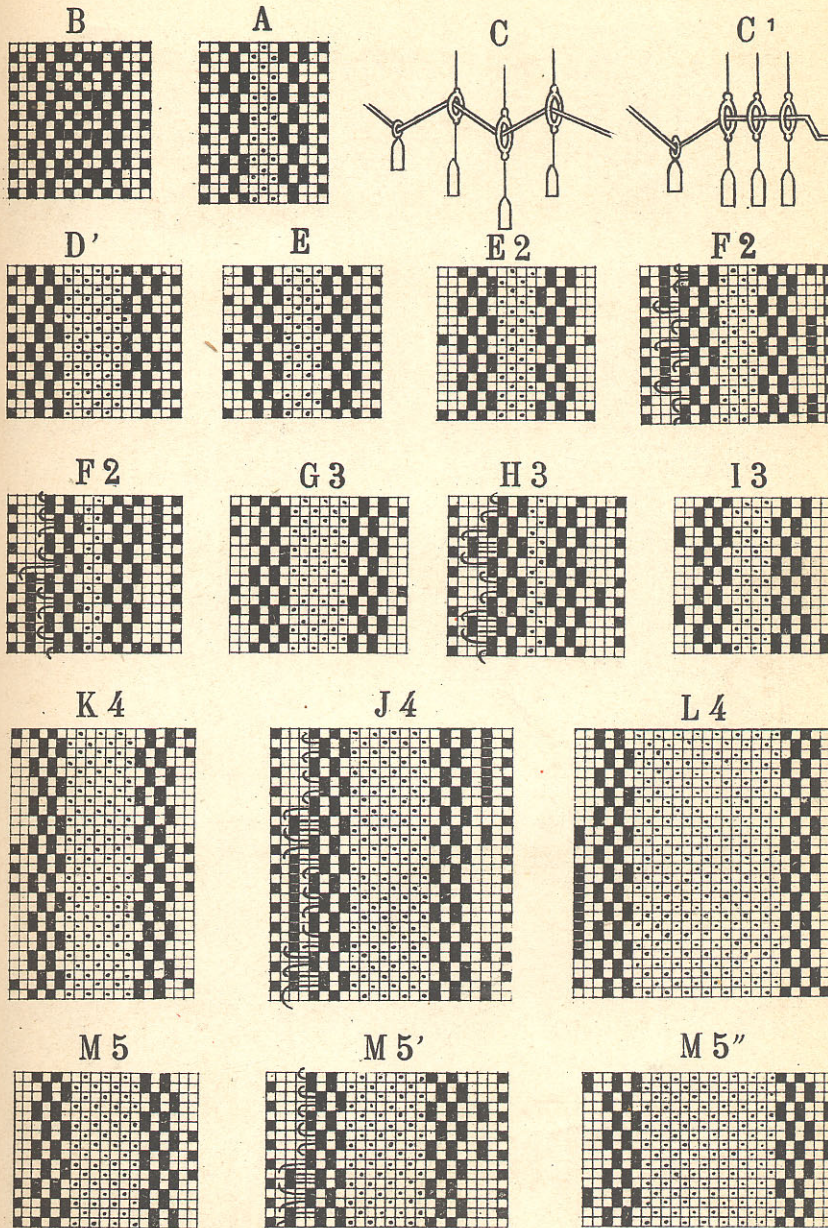


**G** Piqué matelassé



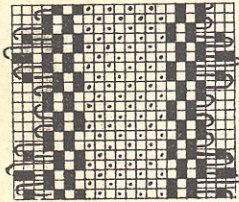
**F** Piqué rubans-soie



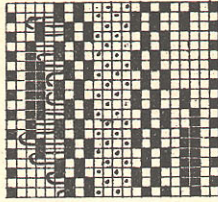


Pl. XI

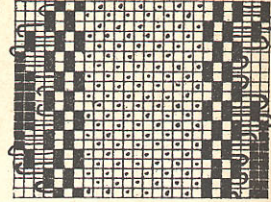
N 6



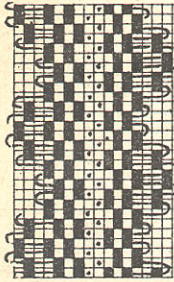
N 6



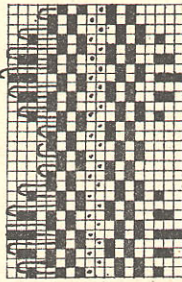
N 6



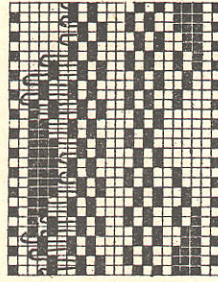
0 7



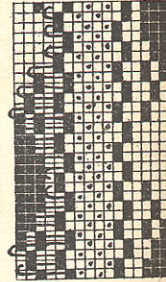
8



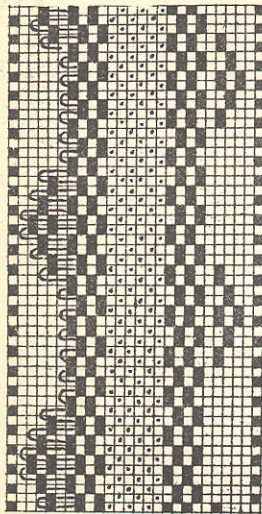
8'



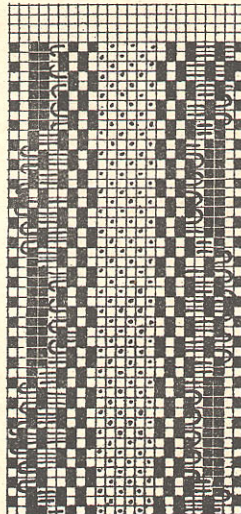
8''



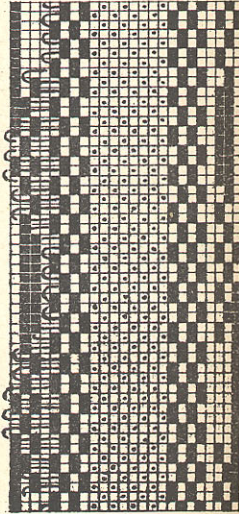
8'''



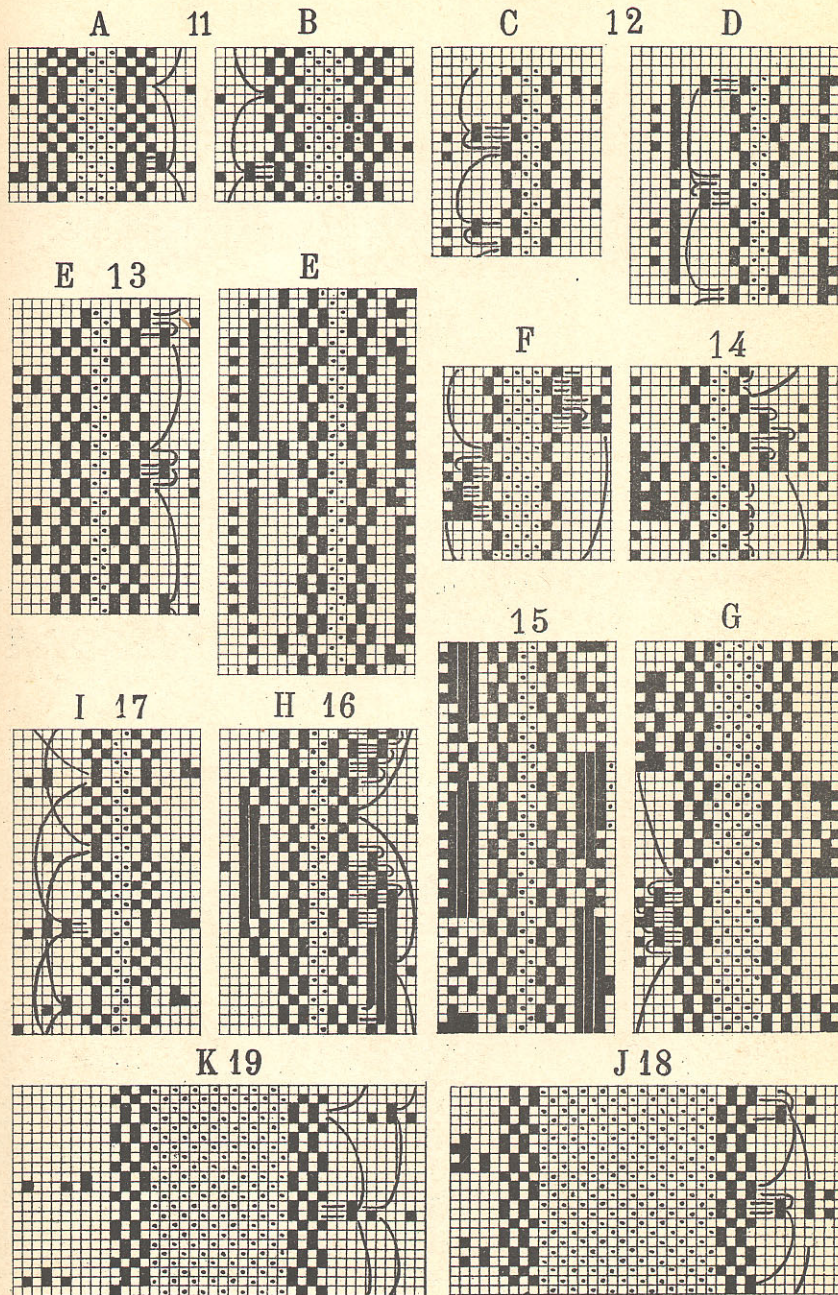
9



0

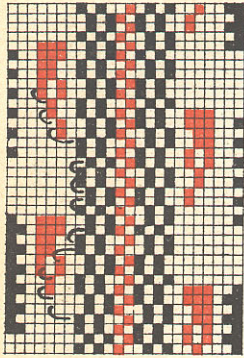


PI.XII



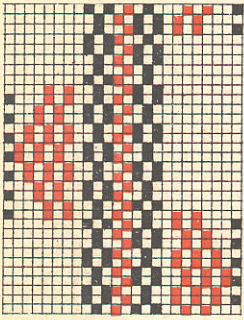
# Pl. XIII

Frangé 3 crins, 2 couleurs et engrelure



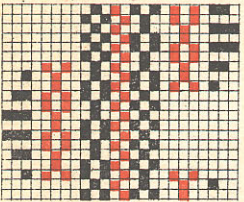
20 A

Frangé éventail par roquetin



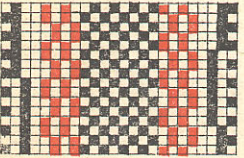
22 D

Frangé éventail, frange



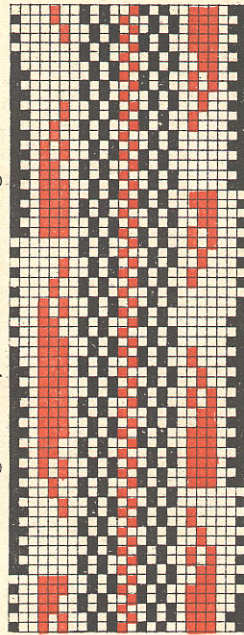
22 D'

Picot à 2 crins



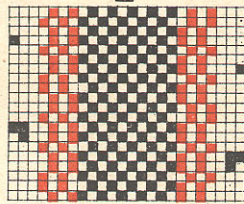
E''

Frangé 3 crins, 2 couleurs sans engrelure



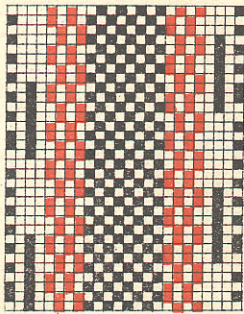
20 B

Engrelure perfectionnée



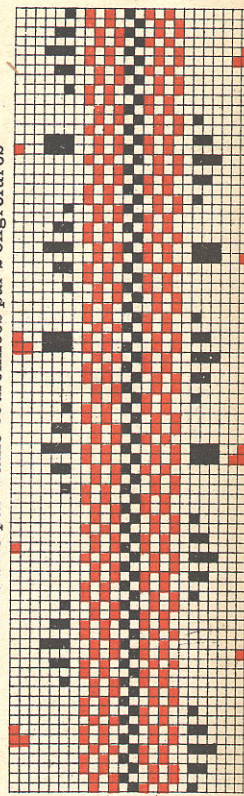
E'''

Picot roquetin perfectionné



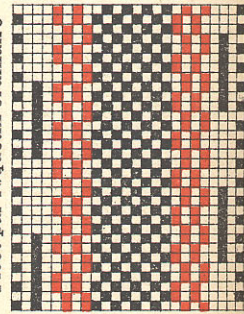
E'

Dents de scie par frange couronnées par 2 engrelures



21

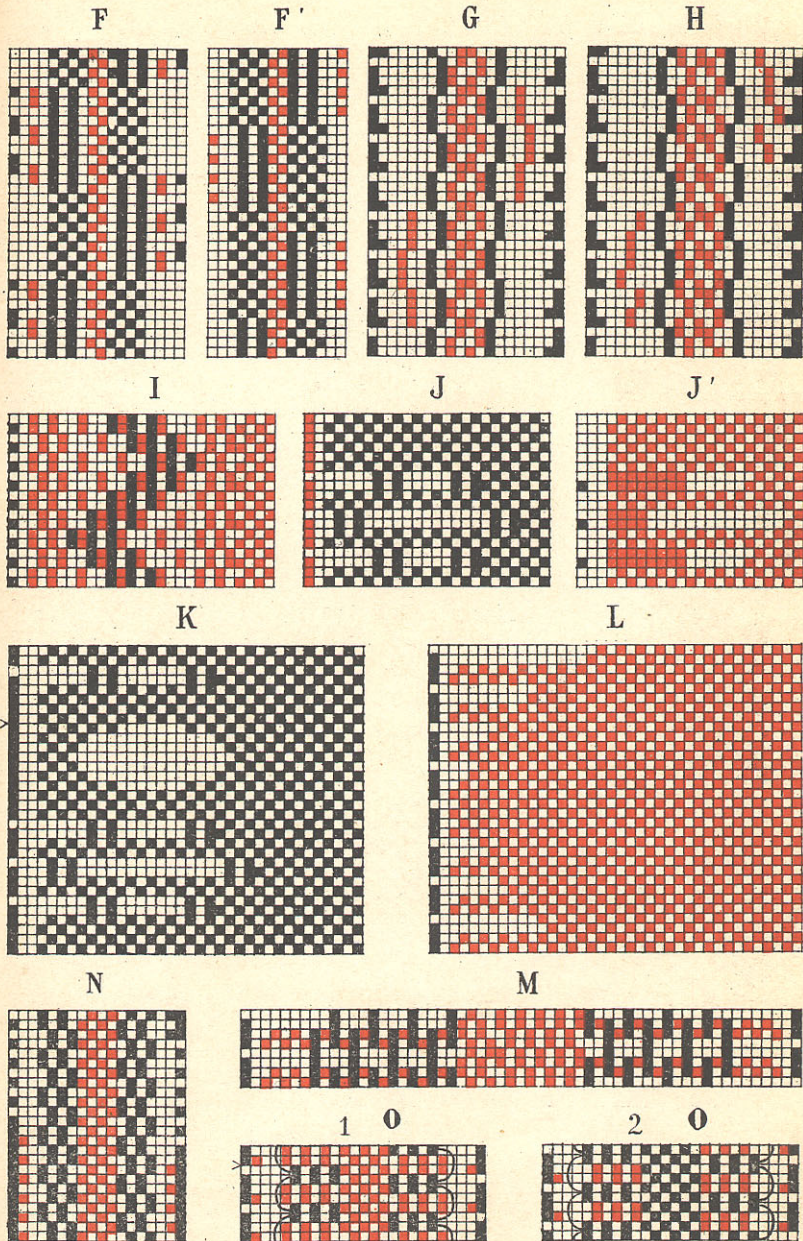
Picot par roquetin ordinaire



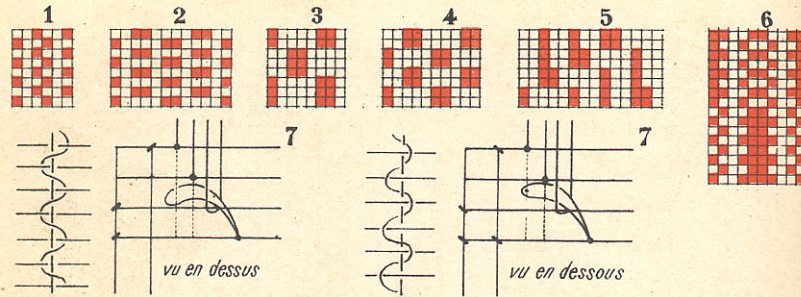
E



PI. XIV



# Pl. XV

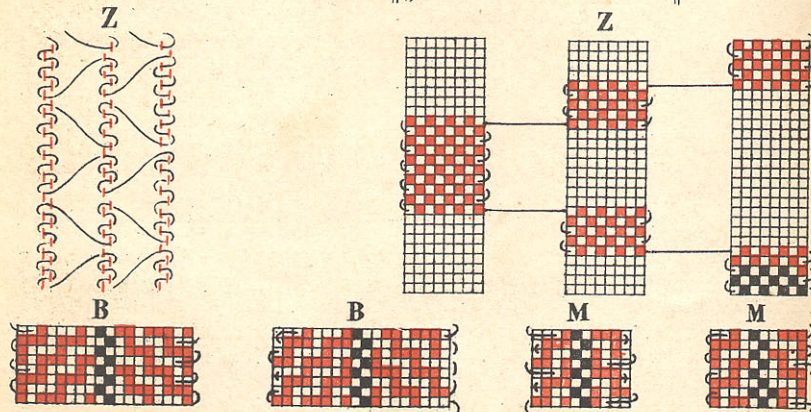
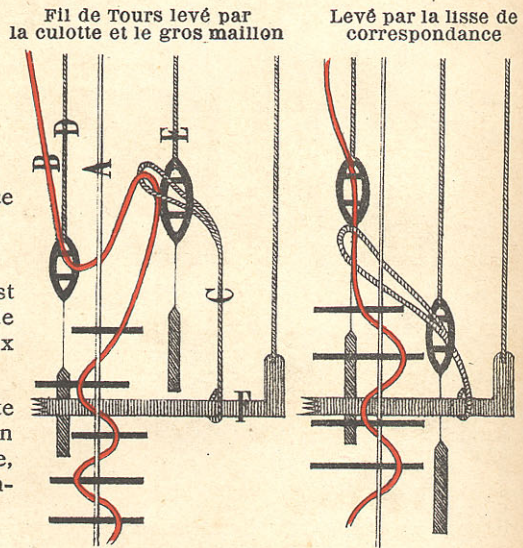


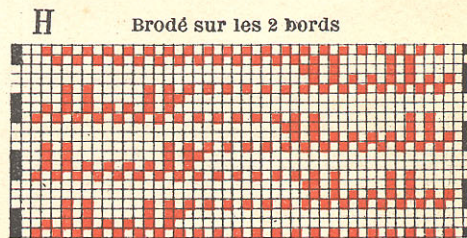
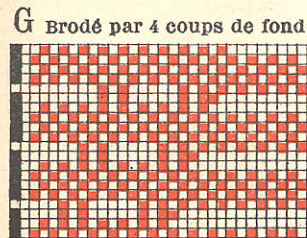
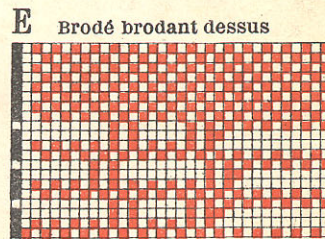
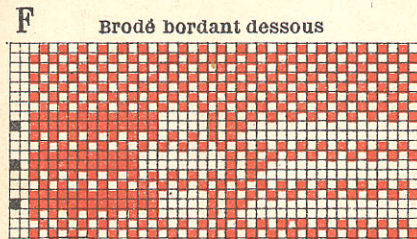
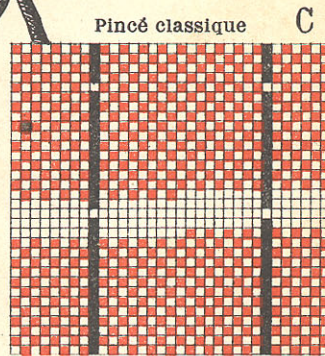
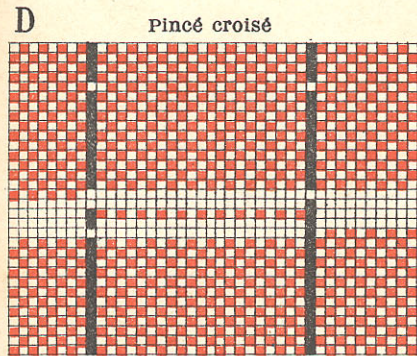
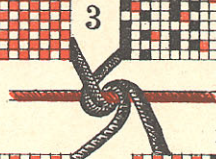
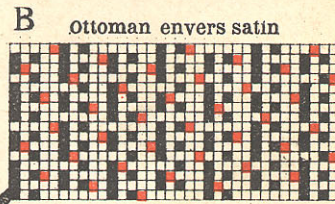
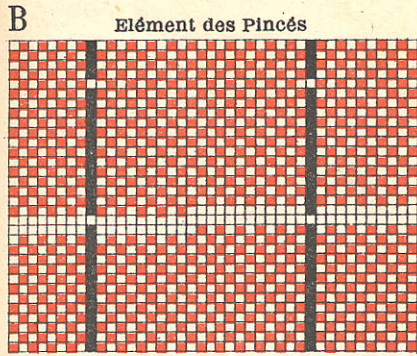
## LÉGENDE

- A. Fil fixe ou droit
- B. Fil de Tours
- C. Lisse à culotte
- D. Lisse de correspondance
- E. Gros maillon
- F. Planche de la culotte

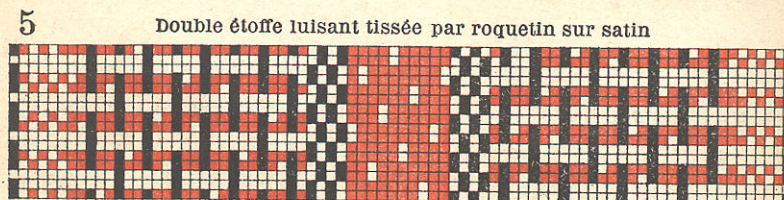
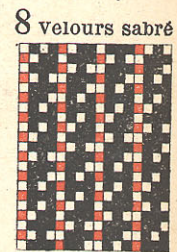
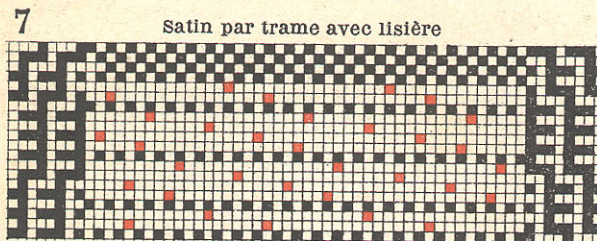
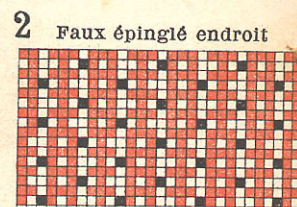
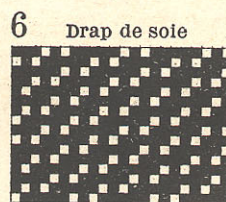
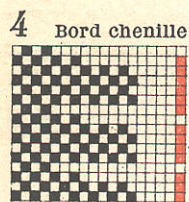
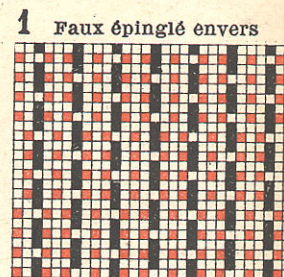
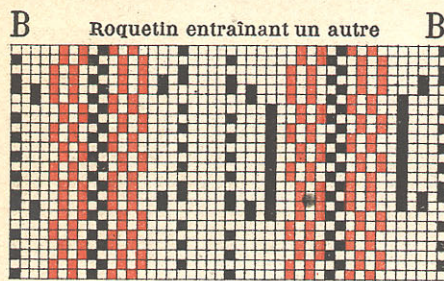
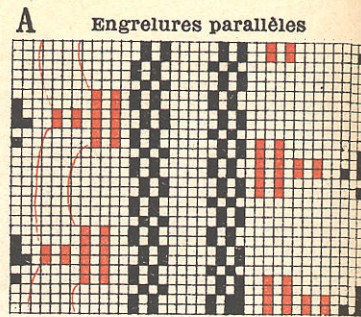
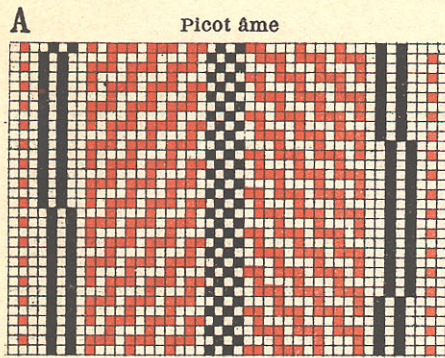
Dans la carte le fil fixe est laissé en papier, le fil de Tours est composé de deux fils : 4 levés, 4 baissés.

Le demi-fil noir représente le travail du gros maillon que l'on prend à la lanterne, la lisse à culotte lève constamment.

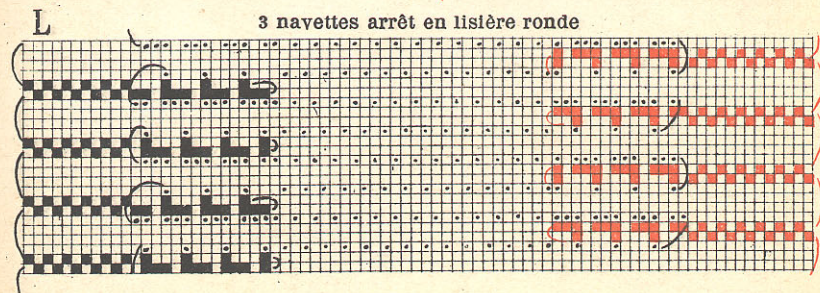
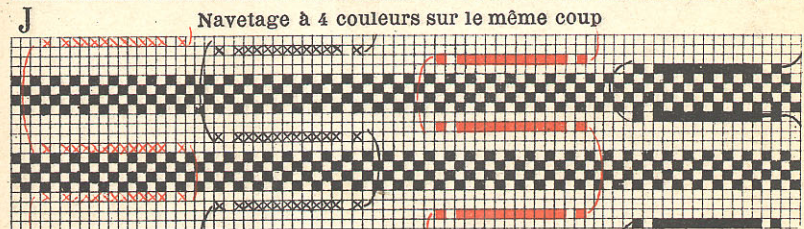
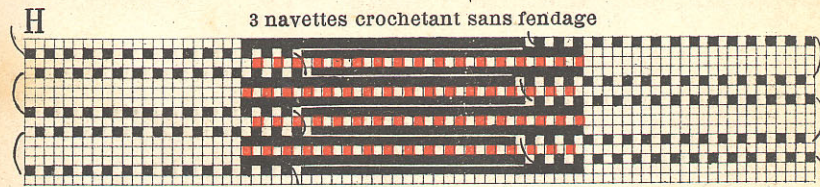
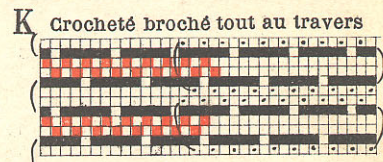
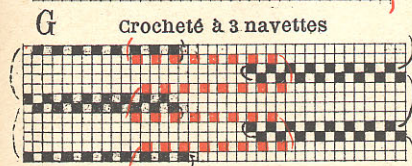
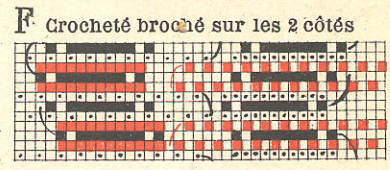
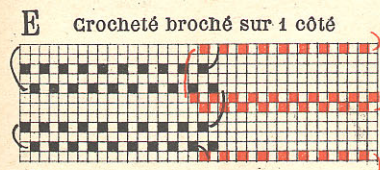
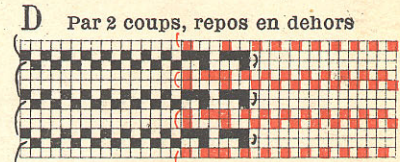
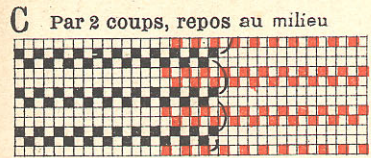
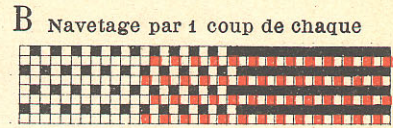
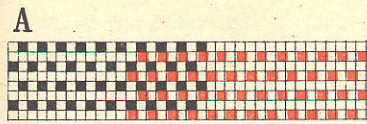




# Pl. XVII

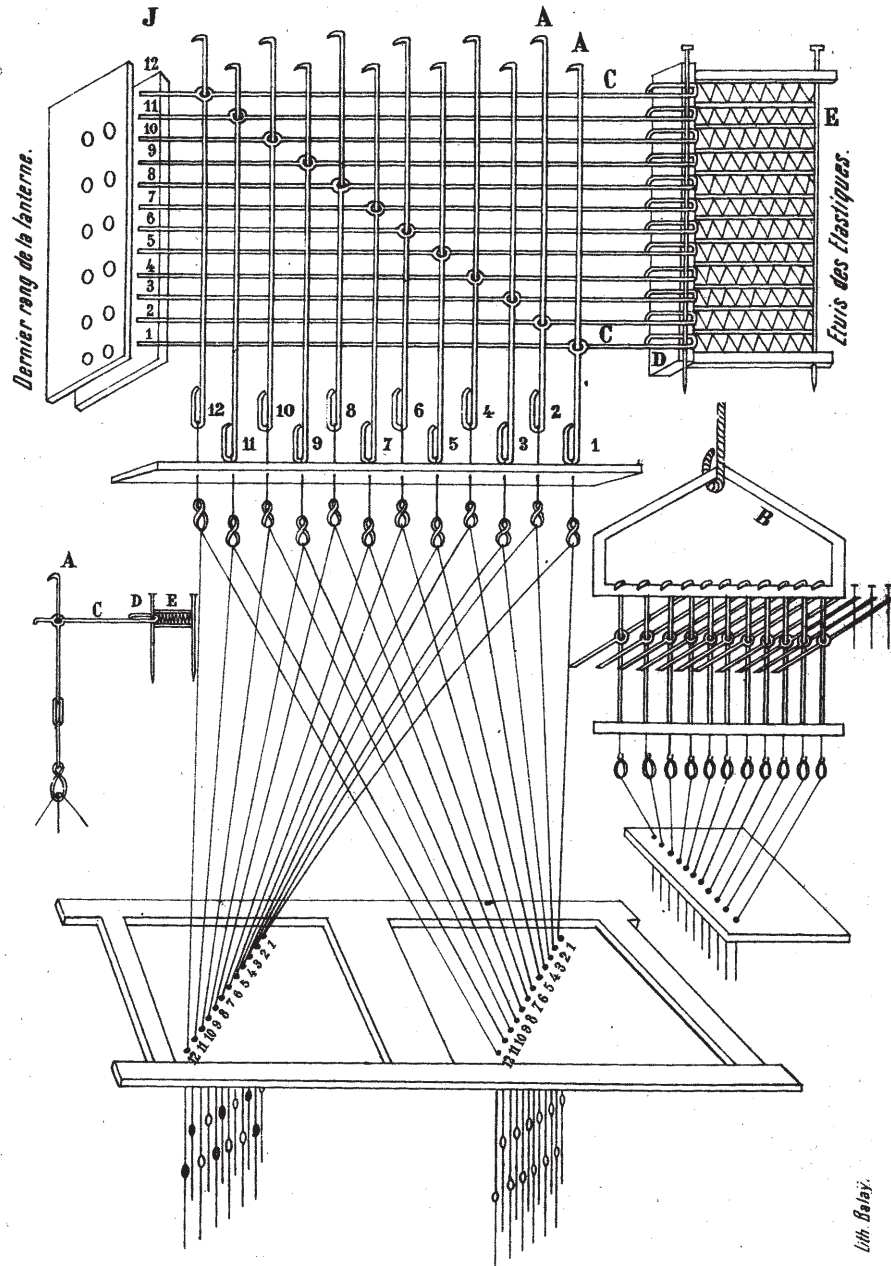


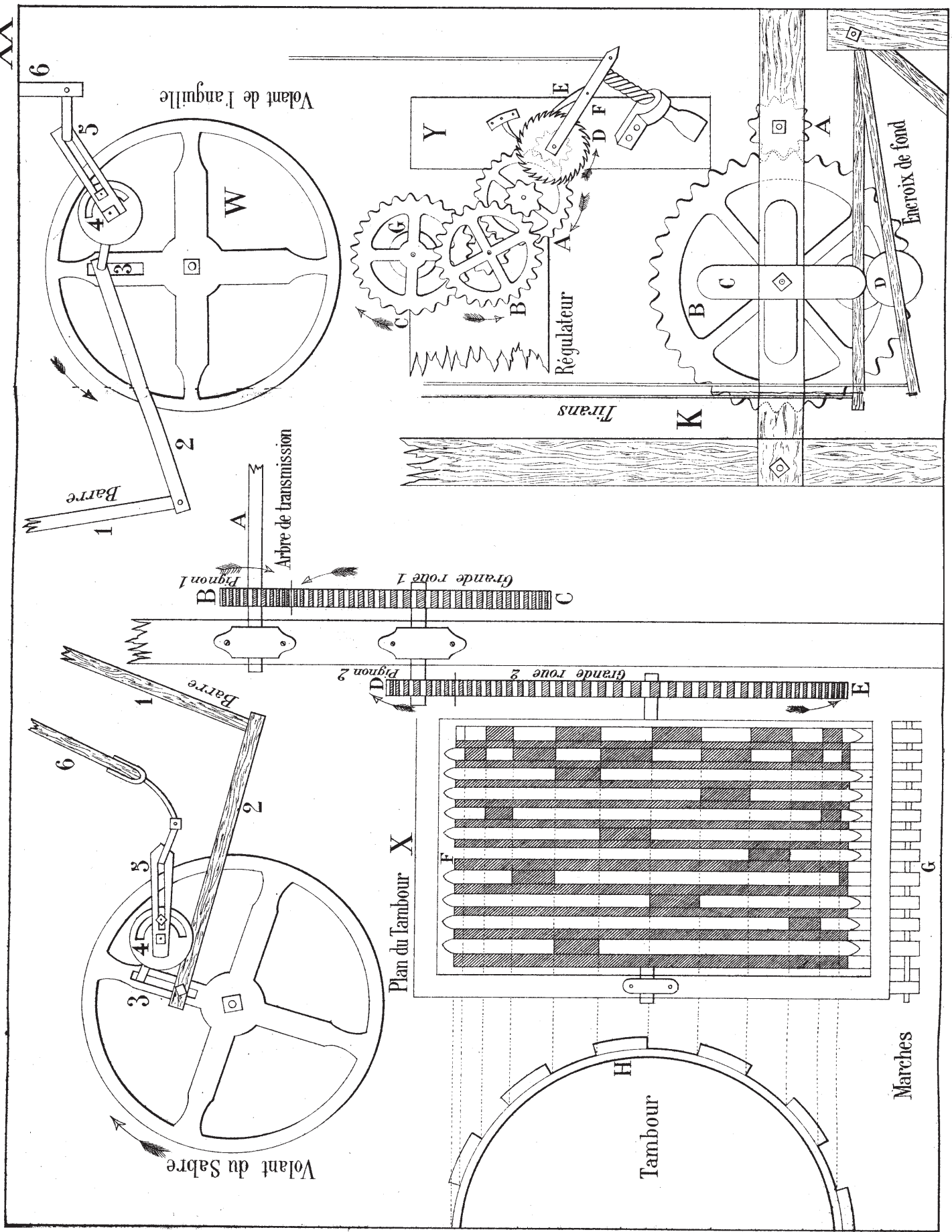
# CROCHETÉS XVIII



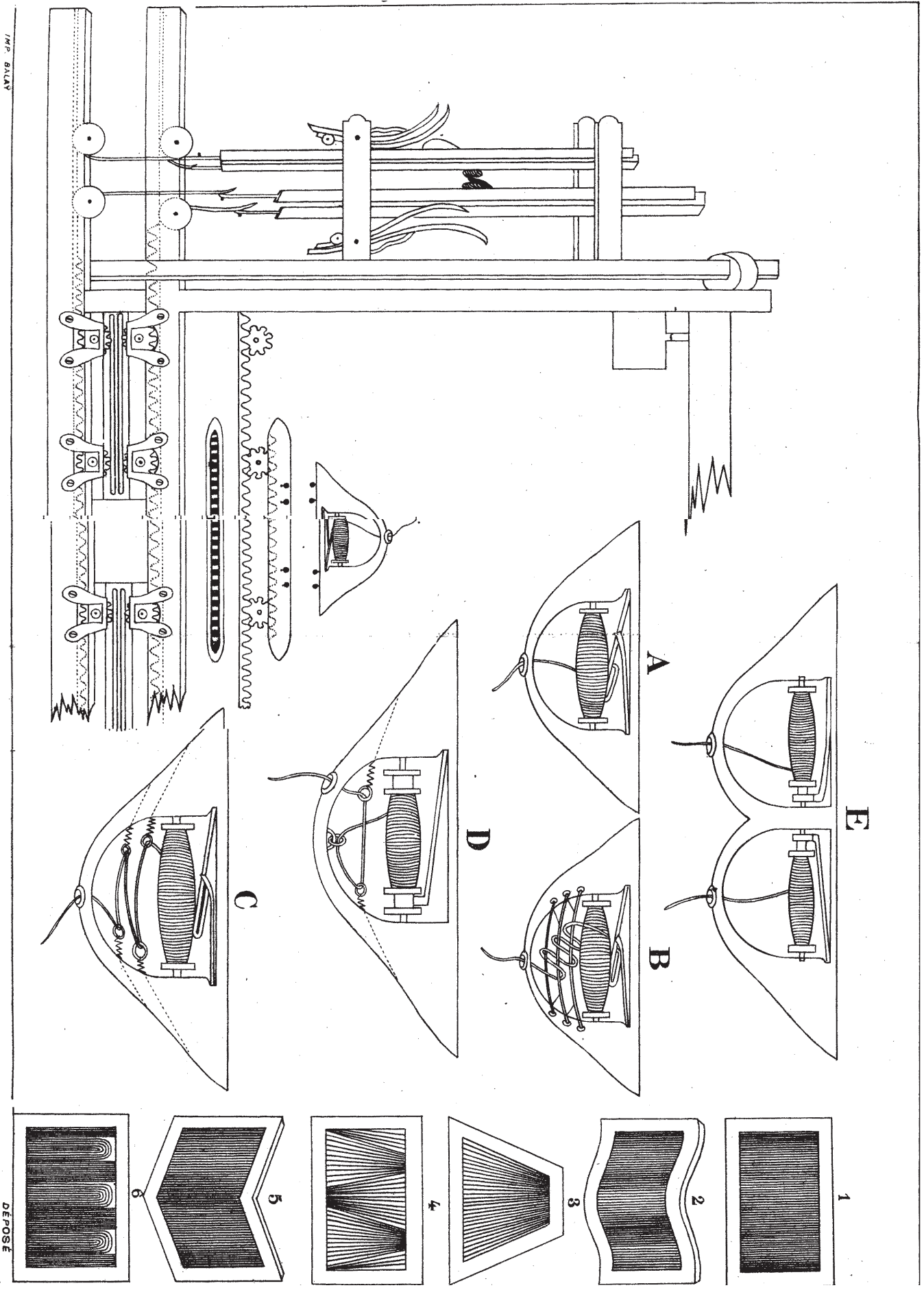
# XIX

## PRINCIPE DE LA MÉCANIQUE JACQUARD





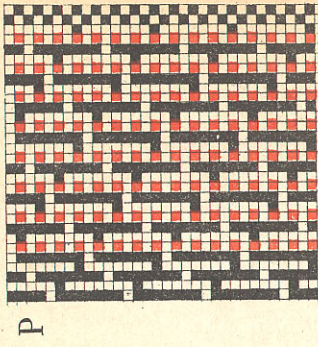
Fold-out rotated 90° to fit on page.



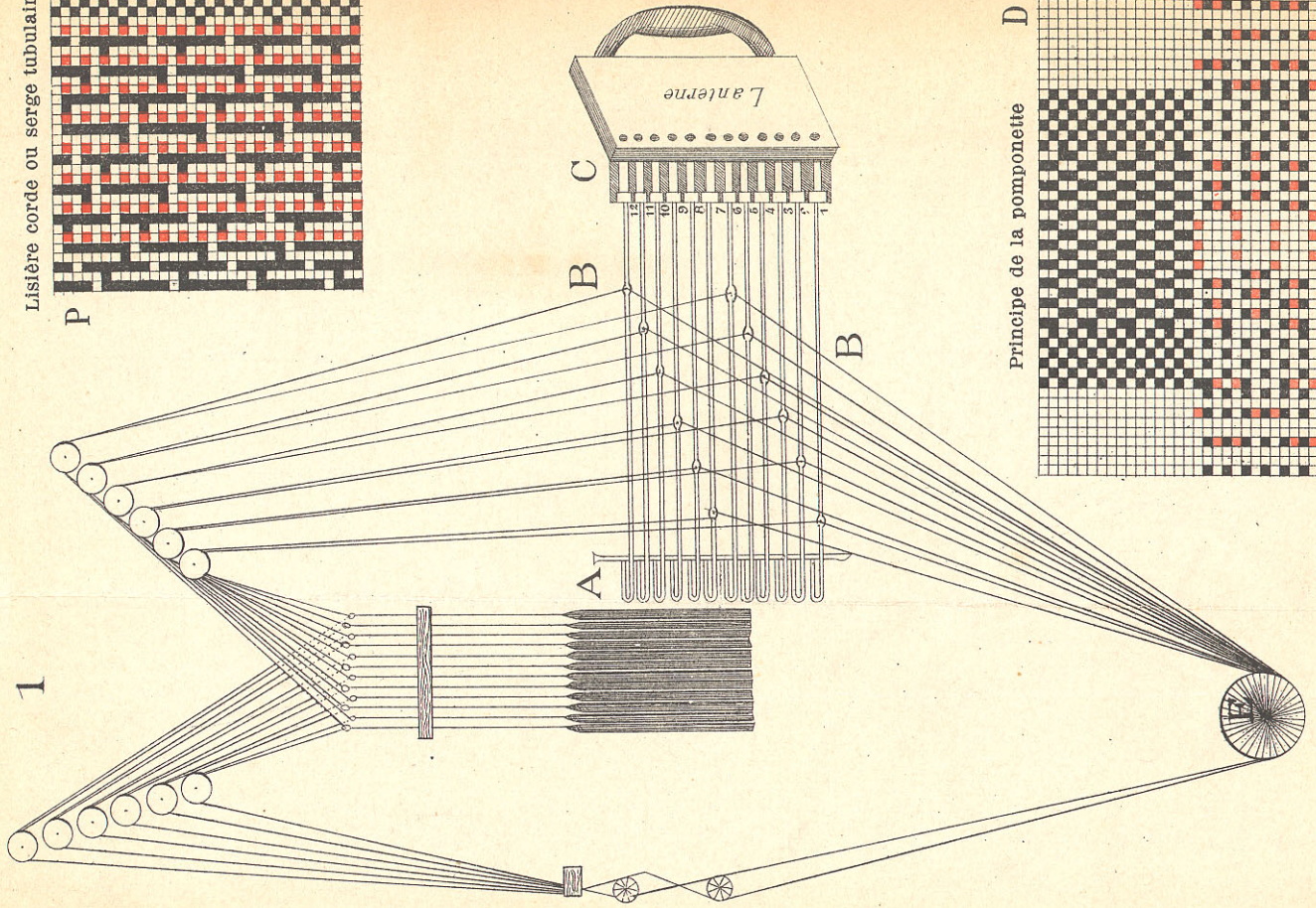
Fold-out rotated 90° to fit on page.



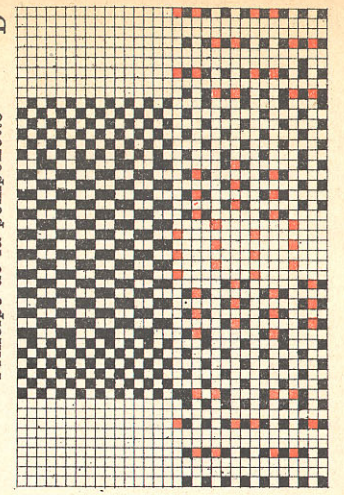
Lisière corde ou serge tubulaire



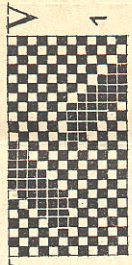
1



Principe de la pomponette

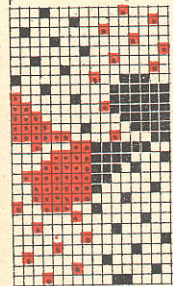


Contressempilage Reversible tafetas impairs



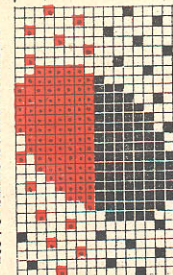
1

Contressempilage Reversible satin séparé

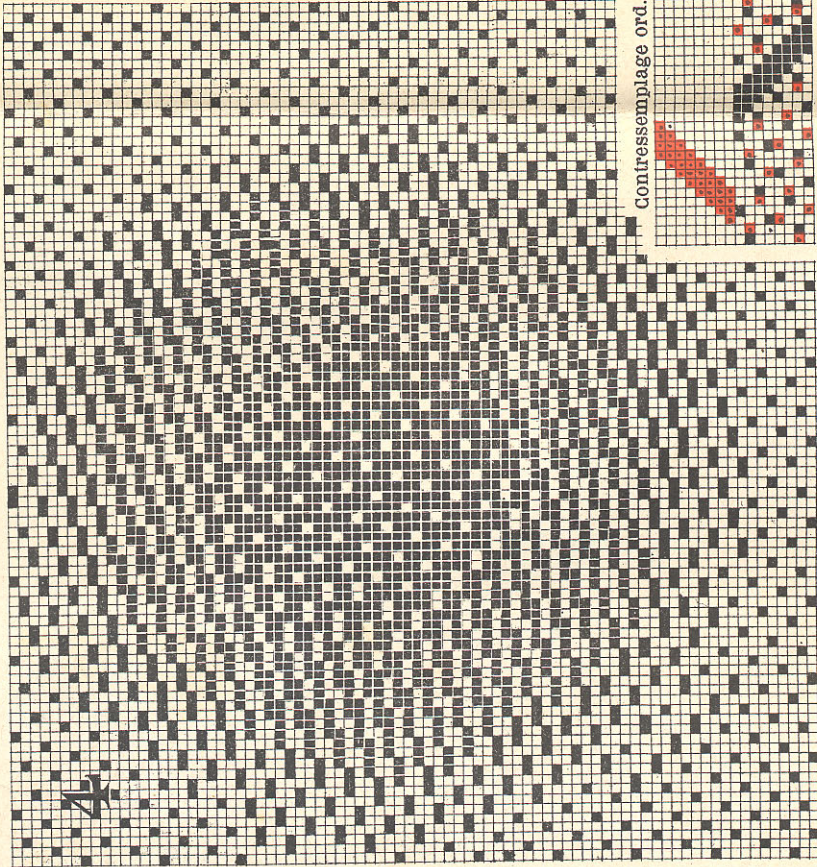


2

Contressempilage, le dessus dessous Reversible satin détaché

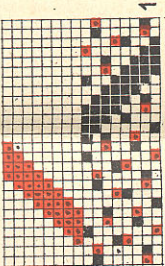


3



4

Contressempilage ord.



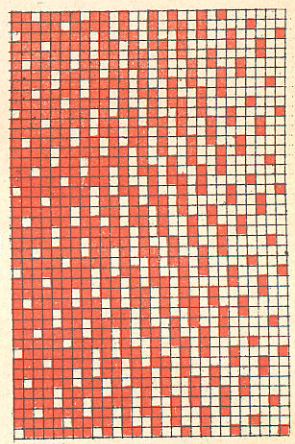
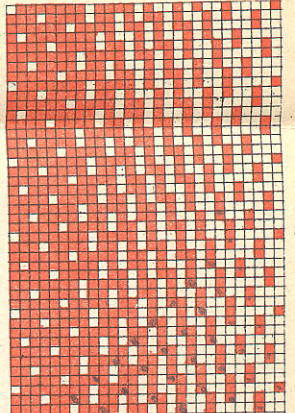
1

2 peintures de satin

Z

1

2



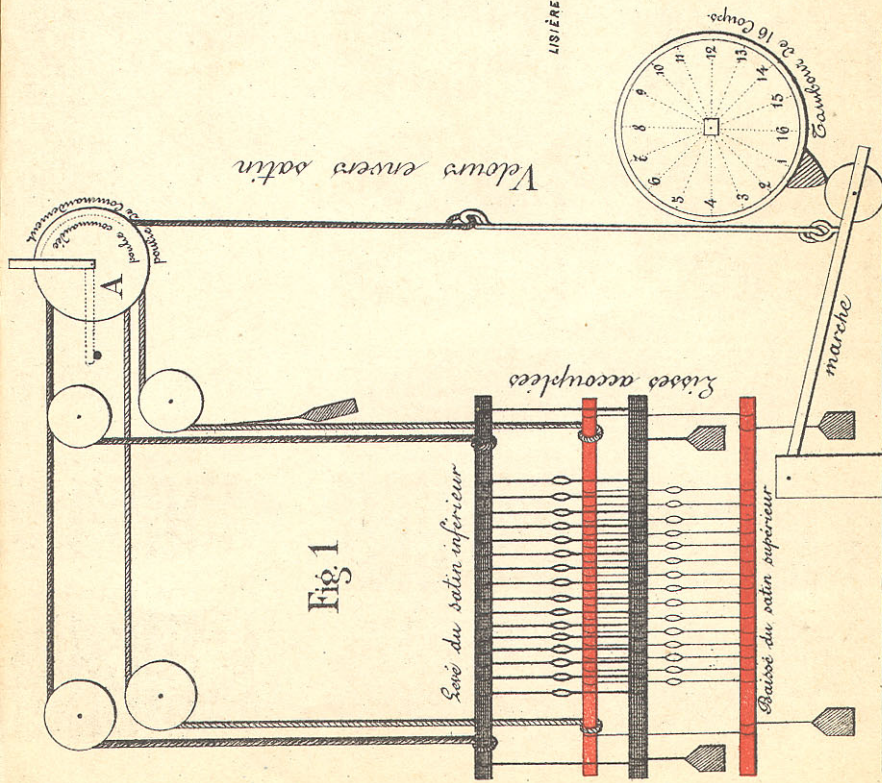
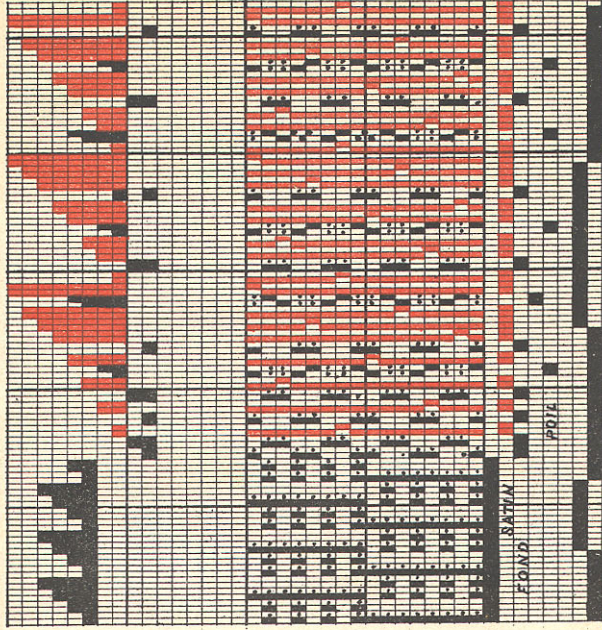


Fig 1



Passage 2 dents lisière à 12 fils.

1 dent à 4 lisière 4 luisant 2 poll 2 luisant 2 poll.

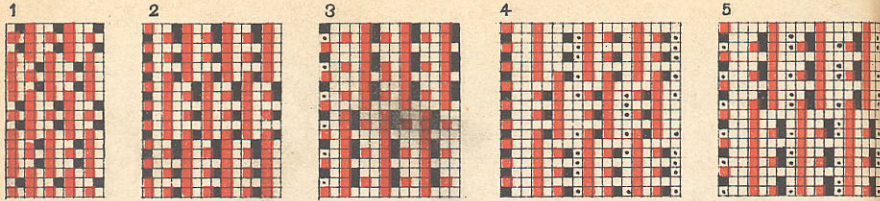
2 luisant 2 satin 2 poll 2 satin 2 luisant 2 satin.

1 dent à 4 satin 2 poll 4 satin 2 luisant 4 satin 2 poll.

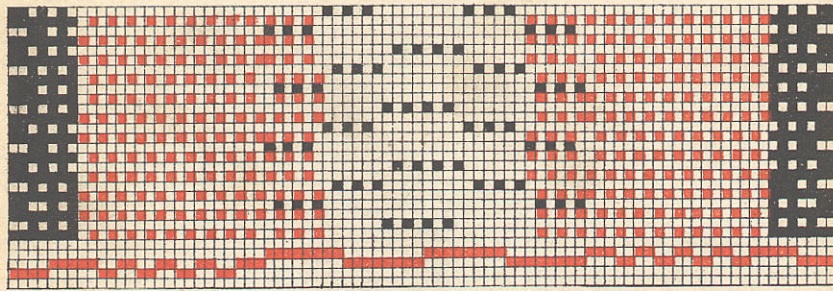
4 satin 2 luisant 4 satin.

Continuer jusqu'à la rencontre de la seconde lisière.

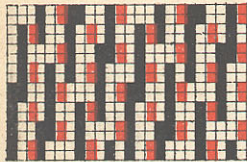
Ottomans double face bicolores



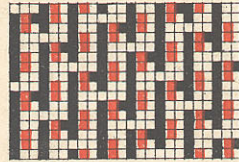
A Pomponette perfectionnée



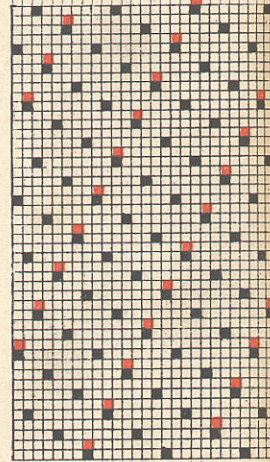
B Satin double face



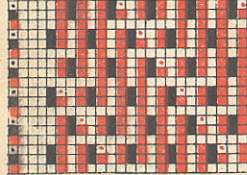
C Satin double face



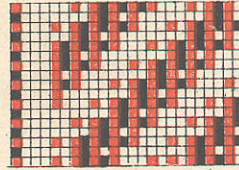
D satin envers damassé



E sergé envers faille



F sergé double face

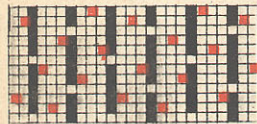


Batavia

J Chenille tramway



I Matelasse



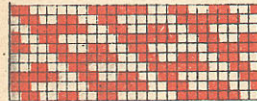
L Petite armure de fond



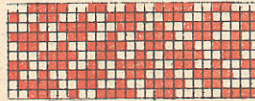
G Royal tubulaire



M Armure de fond

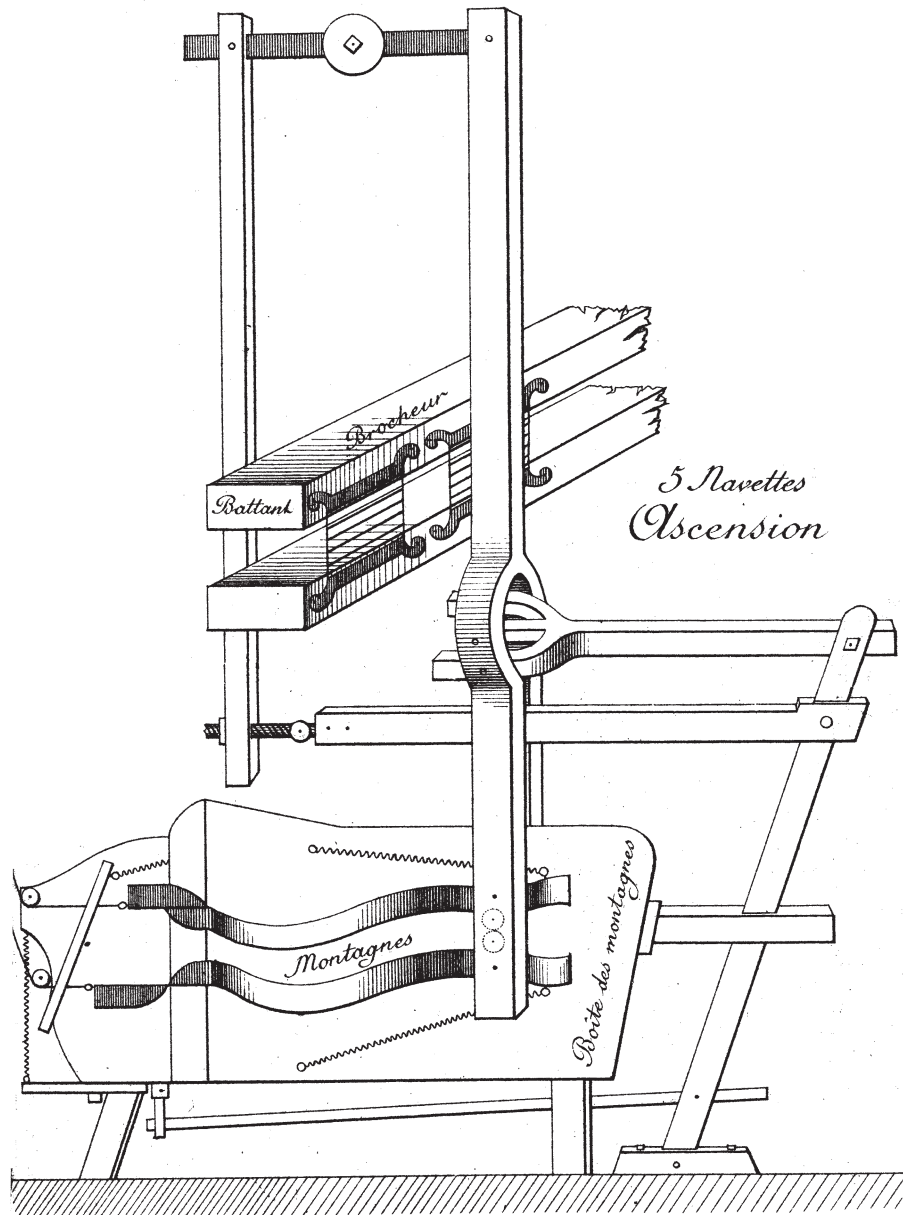


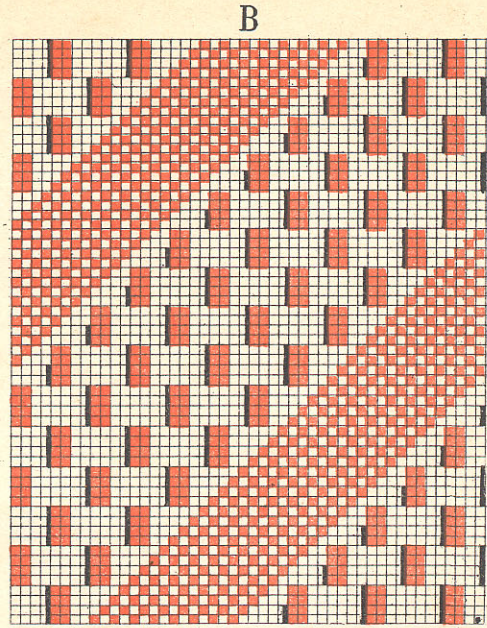
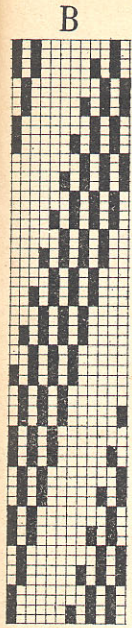
K Armure peau de gant



H Sergé double face







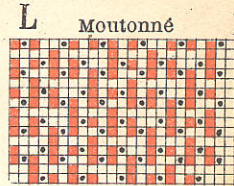
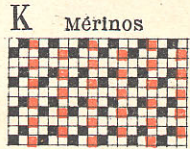
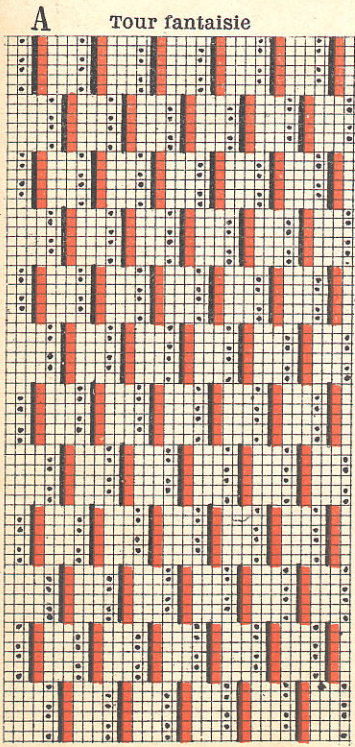
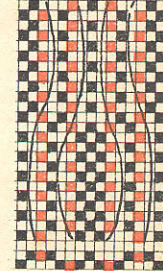
Sergé double face



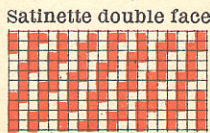
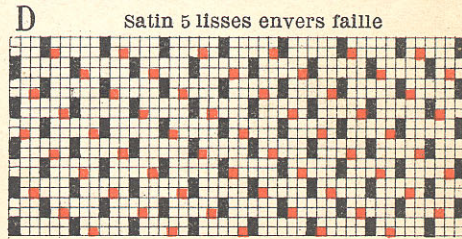
Sergé envers faille



Fausse perle double parallèle



E



C