

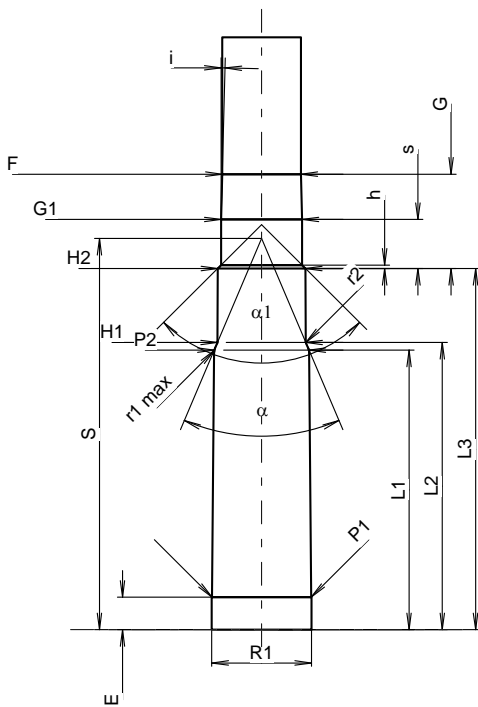
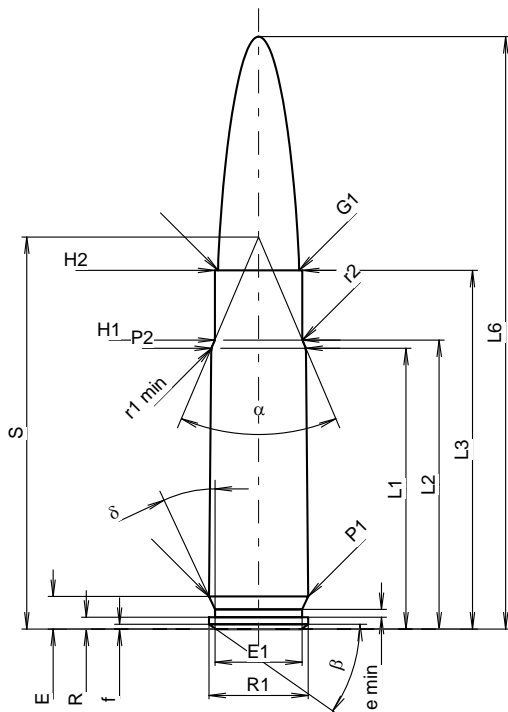
# C.I.P.

## 300 AAC Blackout

Country of Origin: US

TAB.	I
Date	15-05-19
Revision	17-05-17

Alternative Names: 300 Whisper, 300 BLK, 7,62 x 35



Scale 1.37:1

Dimensions in << mm >>  
Dimensions and Tolerances for Proof Barrels  
see Appendix CR1.

### CARTRIDGE MAXI

#### Lengths

L1 <sup>1)</sup>	=	27.20	-0.20
L2 <sup>1)</sup>	=	28.00	-0.20
L3 <sup>1)</sup>	=	34.75	
L4	=		
L5	=		
L6	=	57.40	

#### Case Head

R	=	1.14	
R1	=	9.60	
R3	=		
E	=	3.15	
E1	=	8.43	
e min	=	0.76	
delta	=	25°	
f	=	0.45	
beta	=	35°	

#### Powder Chamber

P1	=	9.60	
P2 <sup>1)</sup> *	=	9.16	-0.20

#### Junction Cone

alpha *	=	46°	
S *	=	37.99	
r1 min	=	1.27	
r2	=	1.28	

#### Collar

H1 *	=	8.48	
H2 <sup>1)</sup>	=	8.48	

#### Projectile

G1 <sup>1)</sup>	=	7.85	
G2	=		
F	=	7.62	
L3+G <sup>1)</sup>	=	43.89	

#### Pressures (Energies)

##### Method Transducer

Pmax	=	3900 bar	
PK	=	4485 bar	
PE	=	4875 bar	
M	=	17.50	
EE	=	2000 Joule	

#### Miscellaneous Dimensions

Fe <sup>1)3)</sup>	=	0.10	
delta L	=	0.08	

### CHAMBER MINI

#### Lengths

L1	=	27.09	
L2	=	27.83	
L3 <sup>1)</sup>	=	35.00	

#### Breech

R	=		
R1	=	9.66	
R2	=		
R3	=		
r	=		

#### Powder Chamber

E	=	3.15	
P1 <sup>1)</sup>	=	9.62	
P2 *	=	9.19	

#### Junction Cone

alpha <sup>1)</sup> *	=	46°	
S *	=	37.91	
r1 max	=	1.27	
r2	=	0.50	

#### Collar

H1 *	=	8.56	
H2 <sup>1)</sup>	=	8.51	

#### Commencement of Rifling

G1 <sup>1)</sup> *	=	7.85	
G <sup>1)</sup>	=	9.14	
alpha l	=	90°	
h	=	0.33	
s *	=	4.75	
i <sup>1)</sup> *	=	1°30'	
w	=		

#### Barrel

F <sup>1)</sup> *	=	7.62	
Z <sup>1)</sup>	=	7.82	

#### Grooves

b	=	4.52	
N	=	4	
u	=	203.20	
Q	=	47.54	mm <sup>2</sup>

Notes: 1) Check for safety reasons  
3) Headspace on Shoulder  
\* Basic dimensions