

*Competitive*

*Land Grant*

*Endowment*

*Research*

*Degrees*

*Service*

*Influential*

# Fact Booklet

*Faculty & Staff*

**2006-2007**

*Enrollments*

*Budget*

*Engagement*

*Retention*

**UK**  
UNIVERSITY  
OF KENTUCKY

*Dream. Challenge. Succeed.*



# Table of Contents

Letter from President Lee T. Todd, Jr.	2-3	Grant and Contract Awards	29
UK Vision and Mission	4	Research and Development	30
Enrollment	5-9	University Endowment	31
First-year Student Profile	10-11	New Facilities	32
Retention and Graduation Rates	12-13	Land and Space	33
Degrees Conferred	14-16	General Equipment Inventories	34
Annual Tuition and Fees	17	Library Collections	35
Full-time Employees	18-19	Benchmark Institutions	36
Alumni and Student Origin Maps	20-21	Administrative Organization	37
Faculty Statistics	22-24	Board of Trustees	38
Faculty Salaries	25	Administrative History	39
Budgeted Revenue and Expenditures	26-27	UK Values	40
Private Giving	28		

## January 2007

In compliance with KRS 164.250, I am pleased to provide you with the 2006-2007 Fact Booklet, a collection of current facts and statistics about the people and programs at the University of Kentucky. All those with a stake in UK's success will find many items of interest in this booklet, including statistics on enrollments, retention, research expenditures, and faculty salaries. A summary of the 2006-2007 Operating Budget is also presented.

Last October, the UK Board of Trustees approved the *2006-2009 Strategic Plan* developed under the leadership of Provost Kumble Subbaswamy. The new Plan was accompanied by Measures of Progress that will be used to judge our effectiveness as we propel UK up the ranks of world-class research institutions. Many of the performance indicators listed in the Measures of Progress are summarized here.

In fall 2006, we enrolled over 27,000 students, the largest number of students ever to attend the University. In addition, nearly 4,200 first-years students began their college careers at UK, establishing a new record for the largest entering class. We are especially proud that the number of African American first-year students more than doubled, from 143 in 2005 to 294 in 2006. UK also succeeded in attracting significantly more students who participated in the Governor's Scholars and Governor's School for the Arts Programs, up 16 percent from fall 2005. The 3,519 baccalaureate degrees conferred in 2005-06 set another UK record, increasing by seven percent from the previous year.

The increase in the number and talent of our students is part of our Top 20 Business Plan. The Business Plan calls for recruiting a substantial number of additional faculty members to reduce class sizes and improve our research and engagement efforts. We will provide competitive salaries, benefits and professional support to retain and

attract outstanding faculty and staff. Faculty salaries are now at 89 percent of our benchmark institutions' median salary. We aim to reach the median by 2012.

Several new construction projects are creating the space needed for our teaching, research and service programs. Over the last 18 months, we have completed \$6.7 million in renovations to our classrooms and laboratories. In the planning and design stage are a number of facilities, including those focused on Student Health and Patient Care, a Biological Pharmaceutical Complex Building, a Horticultural Research and Education Facility, and a renovated Livestock Disease Diagnostic Lab.

States with great universities have better educated and healthier citizens. The University of Kentucky is committed to research and scholarship that will truly engage the communities we serve. We plan for students to play an important role in our engagement efforts, which will provide them with new learning opportunities for self-growth and civic involvement. Elevating UK to Top 20 status will require hard work over the next 14 years, but the result of our efforts will not only produce a stronger university but also make Kentucky a better place for our children.

Sincerely,

A handwritten signature in black ink, appearing to read "Lee T. Todd, Jr.", written in a cursive style.

Lee T. Todd, Jr.  
President

# VISION

The University of Kentucky will be one of the nation's 20 best public research universities, an institution recognized world-wide for excellence in teaching, research, and service and a catalyst for intellectual, social, cultural, and economic development.

# MISSION

The University of Kentucky is a public, research-extensive, land grant university dedicated to improving people's lives through excellence in teaching, research, health care, cultural enrichment, and economic development.

The University of Kentucky:

- Facilitates learning, informed by scholarship and research.
- Expands knowledge through research, scholarship and creative activity.
- Serves a global community by disseminating, sharing and applying knowledge.

The University, as the flagship institution, plays a critical leadership role for the Commonwealth by contributing to the economic development and quality of life within Kentucky's borders and beyond. The University nurtures a diverse community characterized by fairness and equal opportunity.

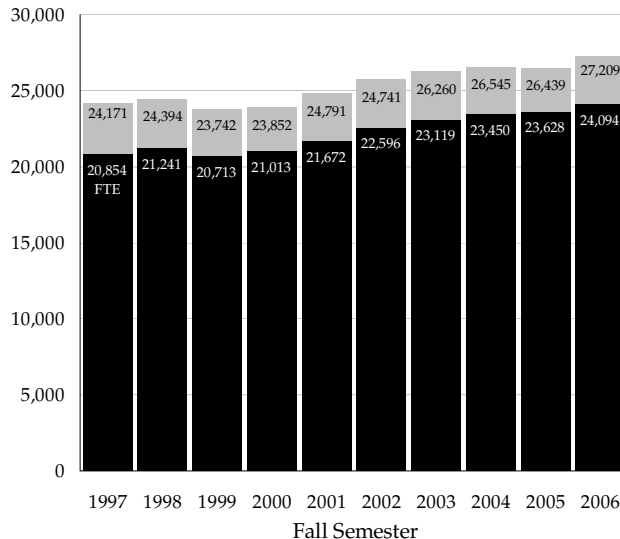
-- Adopted by the Board of Trustees, October 10, 2006

# ENROLLMENT - Headcount and Full-time Equivalent

## Fall 2006 Headcount

<u>Level</u>	<u>Full-time</u>	<u>Part-time</u>	<u>Total</u>
Undergraduate	17,476	1,816	19,292
Graduate	2,769	2,815	5,584
First Professional	1,500	6	1,506
<b>Subtotal (IPEDS)</b>	<b>21,745</b>	<b>4,637</b>	<b>26,382</b>
UG Auditors	0	36	36
Postdoctoral	282	0	282
House Staff	509	0	509
<b>Total (CPE)</b>	<b>22,536</b>	<b>4,673</b>	<b>27,209</b>

Note: FTE figures have been re-calculated in accordance with CPE's guidelines, which call for adding the number of full-time students to one-third of the part-time students enrolled.



# ENROLLMENT - Fall 2006 at a Glance

		<u>% of Total</u>
<b>Men</b>	12,994	47.8
<b>Women</b>	14,215	52.2
<b>Total</b>	<b>27,209</b>	<b>100.0</b>

<b>Full-time</b>	22,536	82.8
<b>Part-time</b>	4,673	17.2
<b>Total</b>	<b>27,209</b>	<b>100.0</b>

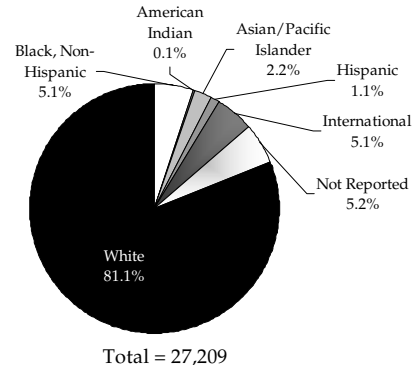
<b>Resident</b>	20,918	76.9
<b>Non-resident</b>	6,291	23.1
<b>Total</b>	<b>27,209</b>	<b>100.0</b>

		<u>% of Total</u>
Freshmen	5,452	20.0
Sophomores	3,976	14.6
Juniors	4,102	15.1
Seniors	5,430	20.0
UG Non-degree	368	1.4
<b>Subtotal Undergraduate</b>	<b>19,328</b>	<b>71.0</b>
Master/Specialist	2,870	10.5
Doctoral	2,251	8.3
Graduate Non-degree	463	1.7
<b>Subtotal Graduate</b>	<b>5,584</b>	<b>20.5</b>
<b>First Professional</b>	<b>1,506</b>	<b>5.5</b>
<b>House Staff/Post Doctoral</b>	<b>791</b>	<b>2.9</b>
<b>Total</b>	<b>27,209</b>	<b>100.0</b>

Note: Percentages may not total properly due to rounding.

# ENROLLMENT - Fall 2006 by Race/Ethnicity

	<u>Undergrad.</u>	<u>Grad.</u>	<u>First Prof.</u>	<u>Post Doc.</u>	<u>House Staff</u>	<u>Total</u>
Black, Non-Hispanic	1,052	269	64	2	5	1,392
Amer. Indian/ Alaskan Native	21	5	1	0	0	27
Asian/Pacific Islander	409	92	65	17	24	607
Hispanic	212	71	14	2	8	307
International	185	1,017	19	148	22	1,391
Not Reported	540	452	142	85	195	1,414
White	16,909	3,678	1,201	28	255	22,071
<b>Total</b>	<b>19,328</b>	<b>5,584</b>	<b>1,506</b>	<b>282</b>	<b>509</b>	<b>27,209</b>

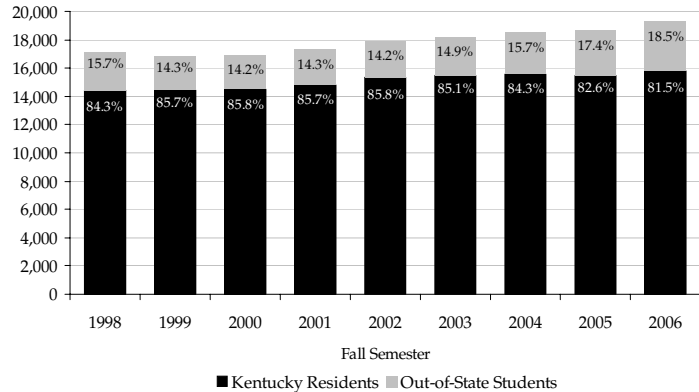




# UNDERGRADUATES - by Residency Status

Number of Undergraduates Enrolled by Residency Status

	<u>Kentucky Residents</u>	<u>Out-of-State Students</u>
Fall 2006	15,757	3,571
Fall 2005	15,481	3,251
Fall 2004	15,587	2,905
Fall 2003	15,486	2,704
Fall 2002	15,348	2,530
Fall 2001	14,820	2,464
Fall 2000	14,499	2,400
Fall 1999	14,441	2,406
Fall 1998	14,461	2,696

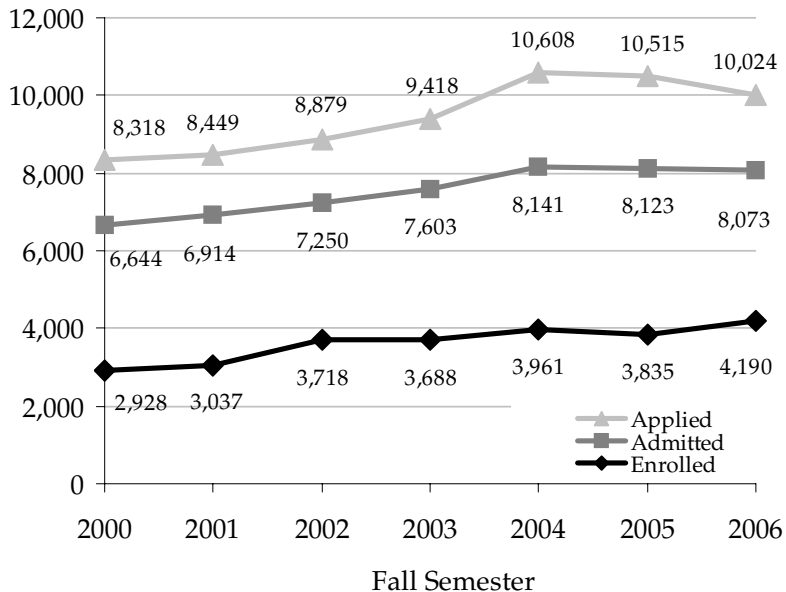


# APPLIED, ADMITTED and ENROLLED

## First-year Students Fall 2006

Applied 10,024  
Admitted 8,073  
Enrolled 4,190

Admit. Rate 80.5%  
Yield Rate 51.9%

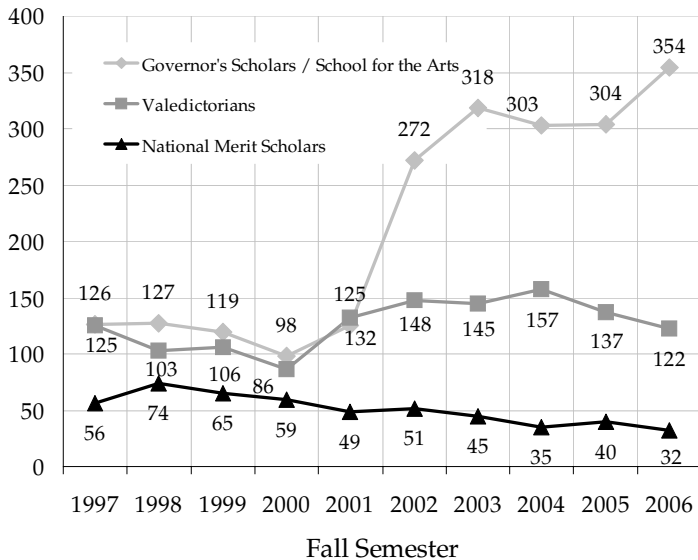
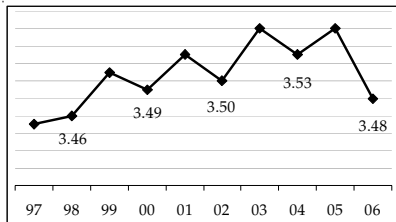


# FIRST-YEAR STUDENT PROFILE

In fall 2006, the University enrolled 4,190 first-year students, with 34% of the class presenting a high school GPA of 3.8 or higher, and including:

- 354 Governor's Scholars and Governor's School for the Arts
- 122 High School Valedictorians
- 32 National Merit Scholars

Average HS GPA of Total First-year Class

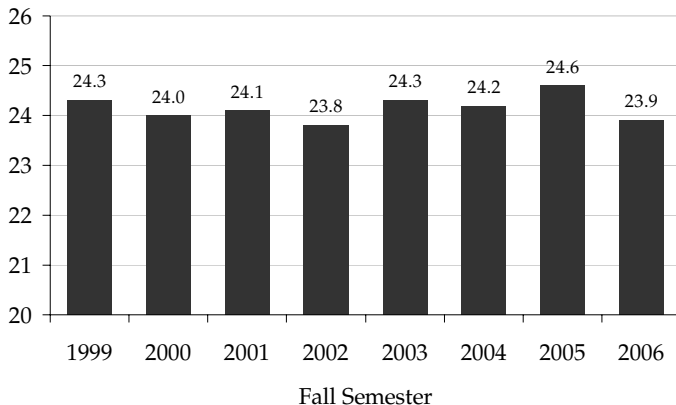


# ACT Scores - Entering First-year Students

Average ACT Scores of First-year Students

<u>Year</u>	<u>N</u>	<u>Mean</u>	<u>25th/75th Percentile</u>
Fall 2006	3,799	23.9	21/26
Fall 2005	3,427	24.6	22/27
Fall 2004	3,581	24.2	21/27
Fall 2003	3,356	24.3	22/27
Fall 2002	3,362	23.8	21/26
Fall 2001	2,875	24.1	21/26
Fall 2000	2,754	24.0	21/26
Fall 1999	2,532	24.3	22/27

Note: Some students submit SAT scores rather than ACT scores. These students' scores are not reflected in the table and graph.



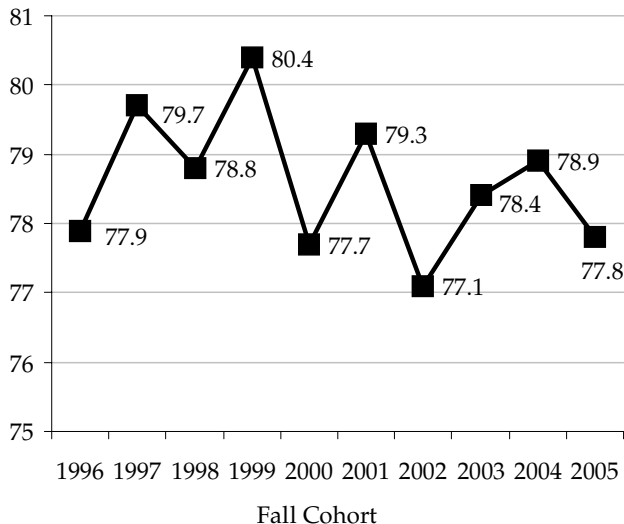
# RETENTION RATE

## First-to-second Year Retention Rate\*

<u>Cohort</u>	<u>Overall</u>	<u>White</u>	<u>Black, Non-Hispanic</u>	<u>Other</u>
2005	77.8	78.0	76.1	76.4
2004	78.9	79.6	69.0	80.5
2003	78.4	78.4	72.8	83.1
2002	77.1	77.3	78.0	71.5
2001	79.3	79.3	77.5	81.1
2000	77.7	77.7	77.7	79.7
1999	80.4	80.7	77.2	78.0
1998	78.8	79.0	80.3	71.5
1997	79.7	80.1	79.7	70.9
1996	77.9	78.3	73.8	77.0

\*Retention rates apply to first-time, full-time, degree-seeking students; the fall 2005 cohort numbers are preliminary.

## First-to-second Year Overall Retention Rate



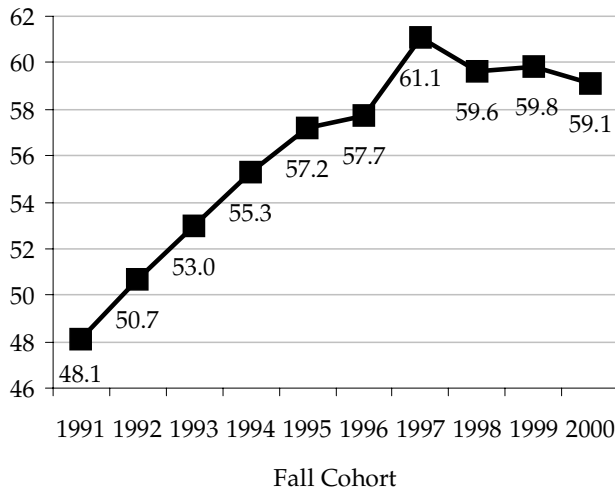
# GRADUATION RATE

## Six-year Graduation Rate\*

Cohort	Overall	Black, Non-Hispanic		
		White	Other	Other
2000	59.1	60.6	45.0	50.5
1999	59.8	60.8	46.2	57.1
1998	59.6	60.2	49.7	61.4
1997	61.1	62.2	49.0	59.4
1996	57.7	59.1	43.2	53.9
1995	57.2	58.2	38.5	63.2
1994	55.3	57.1	35.4	48.2
1993	53.0	54.8	32.5	52.3
1992	50.7	52.0	36.1	46.6
1991	48.1	49.3	34.4	45.9

\*Graduation rates apply to first-time, full-time, degree-seeking students; the fall 2000 cohort numbers are preliminary.

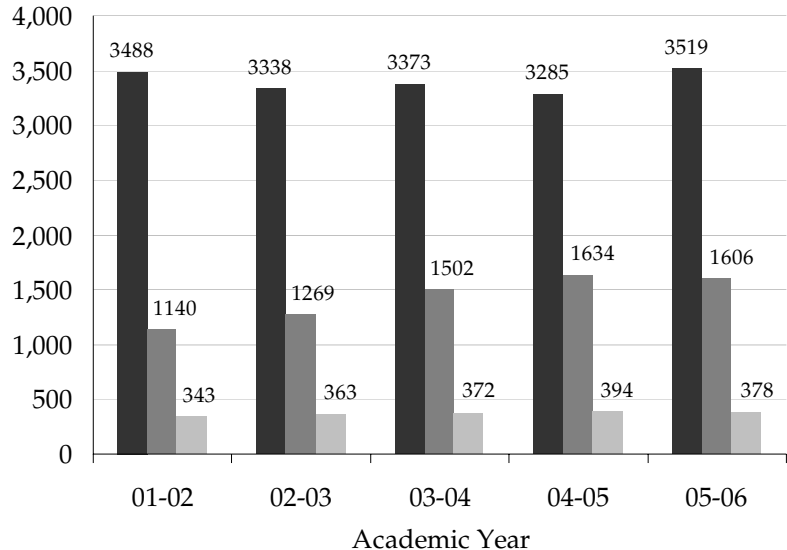
## Six-year Overall Graduation Rate



# DEGREES CONFERRED

**2005-2006**

■ Baccalaureate	3,519
■ Graduate	1,606
■ First Professional	378



# DEGREES CONFERRED - By College

2005-2006

<u>College</u>	<u>Bacc.</u>	<u>Mast.*</u>	<u>Doc.</u>	<u>First Prof.</u>
Agriculture	442	57	22	-
Arts & Sciences	975	133	71	-
Business & Economics	648	178	11	-
Comm. & Info. Studies	382	118	8	-
Dentistry	-	3	-	49
Design	110	10	-	-
Education	328	263	31	-
Engineering	280	158	29	-
Fine Arts	124	27	5	-

<u>College</u>	<u>Bacc.</u>	<u>Mast.*</u>	<u>Doc.</u>	<u>First Prof.</u>
Grad. School	-	99	10	-
Health Sciences	94	122	3	-
Law	-	-	-	141
Medicine	-	9	29	91
Nursing	81	40	14	-
Pharmacy	-	4	6	97
Public Health	-	29	11	-
Social Work	55	100	6	-
<b>Total</b>	<b>3,519</b>	<b>1,350</b>	<b>256</b>	<b>378</b>

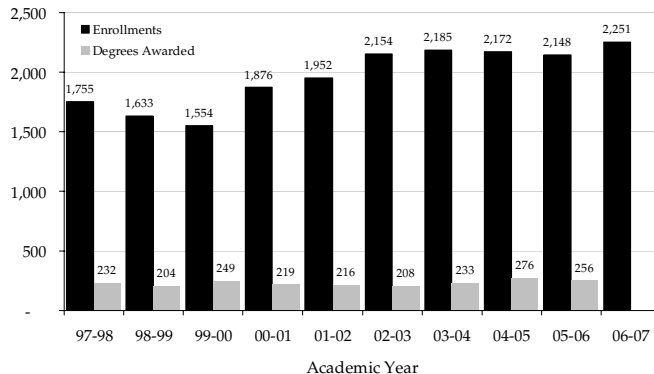
\* Includes Specialist degrees



# DOCTORATES - Enrollments and Degrees Awarded

<u>Year</u>	<u>Fall Enrollment</u>	<u>Degrees Awarded</u>
2006-07	2,251	
2005-06	2,148	256
2004-05	2,172	276
2003-04	2,185	233
2002-03	2,154	208
2001-02	1,952	216
2000-01	1,876	219
1999-00	1,554	249
1998-99	1,633	204
1997-98	1,755	232

Number of Doctoral Students Enrolled and Doctoral Degree Recipients



Note1: Doctoral enrollments are based on the number of students enrolled in doctoral programs during the fall semester of a given academic year.

Note2: The number of doctoral degree recipients for 2006-07 is not yet available.

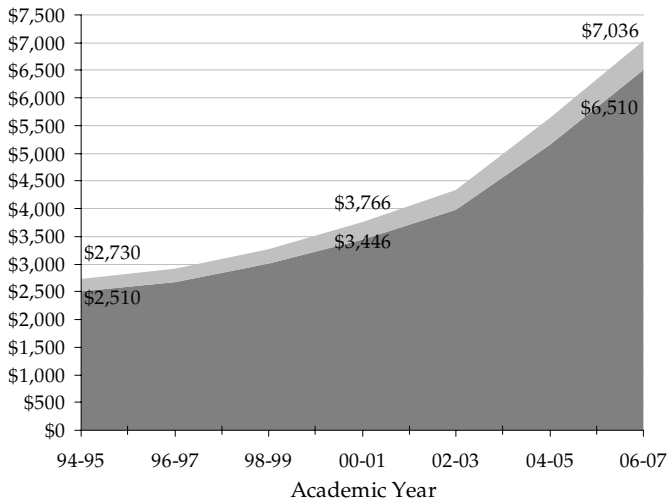
# ANNUAL TUITION and FEES

## 2006-2007

<u>Resident</u>	<u>Tuition</u>	<u>Fees</u>
■ Graduate	\$ 6,308	\$ 728
■ Undergraduate		
- Lower Division	5,782	728
- Upper Division	5,970	728
<u>Non-resident</u>	<u>Tuition</u>	<u>Fees</u>
Graduate	\$ 14,426	\$ 728
Undergraduate		
- Lower Division	13,242	728
- Upper Division	13,428	728

Note: Beginning in 2004-05, undergraduates in upper and lower divisions are charged different rates of tuition. The tuition rate in the graph reflects the rate for lower division students.

Resident Tuition and Fees Combined



# FULL-TIME EMPLOYEES

2005-2006

<u>Full-time Employees</u>	<u>Educational &amp; General</u>	<u>Hospital &amp; Auxiliary</u>	<u>Total</u>	<u>% Total</u>
Exec./ Admin./Managerial	322	111	433	3.8%
Faculty	1,942	0	1,942	16.8%
Other Professional	2,192	2,000	4,192	36.3%
Secretarial/Clerical	1,428	828	2,256	19.5%
Tech./Paraprofessional	924	344	1,268	11.0%
Skilled Crafts	167	38	205	1.8%
Service/Maintenance	723	507	1,230	10.7%
<b>Total</b>	<b>7,718</b>	<b>3,828</b>	<b>11,546</b>	<b>100%</b>

Note: Percentages may not total properly due to rounding.

# FULL-TIME EMPLOYEE DEMOGRAPHICS

**2005-2006**

<b>Full-time Employees</b>	<b>Black, Non-Hispanic</b>	<b>American Indian/ Alaskan Native</b>	<b>Asian/ Pacific Islander</b>	<b>Hispanic</b>	<b>White</b>	<b>Female</b>	<b>Male</b>
Exec./Admin./Managerial	16	0	6	1	410	197	236
Faculty	66	3	194	22	1,657	645	1,297
Other Professional	156	7	184	13	3,832	2,853	1,339
Secretarial/Clerical	297	1	23	6	1,929	2,009	247
Tech./Paraprofessional	109	0	49	10	1,100	747	521
Skilled Crafts	29	0	3	0	173	4	201
Service/Maintenance	415	1	16	5	793	541	689
<b>Total</b>	<b>1,088</b>	<b>12</b>	<b>475</b>	<b>57</b>	<b>9,894</b>	<b>6,996</b>	<b>4,530</b>

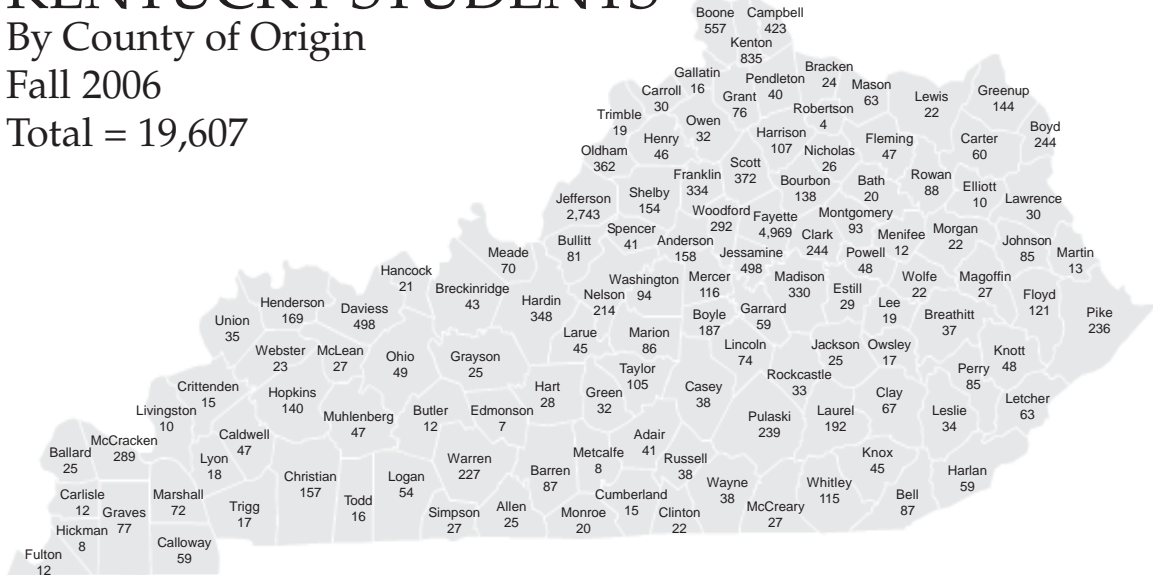


# KENTUCKY STUDENTS

By County of Origin

Fall 2006

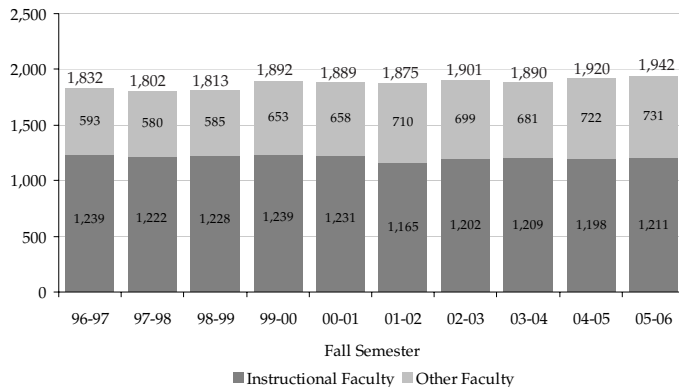
Total = 19,607



# FULL-TIME FACULTY - Historical Trends

	<u>Instructional Faculty</u>	<u>Other Faculty</u>
2005-2006	1,211	731
2004-2005	1,198	722
2003-2004	1,209	681
2002-2003	1,202	699
2001-2002*	1,165	710
2000-2001	1,231	658
1999-2000	1,239	653
1998-1999	1,228	585
1997-1998	1,222	580
1996-1997	1,239	593

Number of Full-time Faculty by Year



Note: Beginning in 2001-2002, changes in the federal definition of 'Instructional Faculty' excluded 'Extension Faculty;' however, Lecturers are now included. 'Other Faculty' now includes those with Extension, Clinical, Research and Library faculty series designations.

# FACULTY DEMOGRAPHICS

## Tenured and Tenure-track Faculty 2005-2006

<u>Full-time Faculty</u>	Black, Non-Hispanic		American Indian/ Alaskan Native		Asian/ Pac. Islander		Hispanic		White	
	<u>M</u>	<u>F</u>	<u>M</u>	<u>F</u>	<u>M</u>	<u>F</u>	<u>M</u>	<u>F</u>	<u>M</u>	<u>F</u>
Professors	6	7	0	0	44	7	1	1	472	94
Associate Professors	19	9	1	0	30	5	3	2	320	199
Assistant Professors	7	10	0	0	45	18	6	2	168	95
Instructors	0	1	0	0	0	1	0	0	4	4
<b>Total</b>	<b>32</b>	<b>27</b>	<b>1</b>	<b>0</b>	<b>119</b>	<b>31</b>	<b>10</b>	<b>5</b>	<b>964</b>	<b>392</b>



# FACULTY - By Rank and Title Series: 2005-2006

## Tenured/Tenure-track

<u>Rank</u>	<u>Regular</u>	<u>Librarian</u>	<u>Extension</u>	<u>Spec. Title</u>	<u>Total</u>
Professors	495	26	41	70	632
Associate	403	26	19	140	588
Assistant	259	7	8	77	351
Instructor	2	7		1	10
<b>Total</b>	<b>1,159</b>	<b>66</b>	<b>68</b>	<b>288</b>	<b>1,581</b>

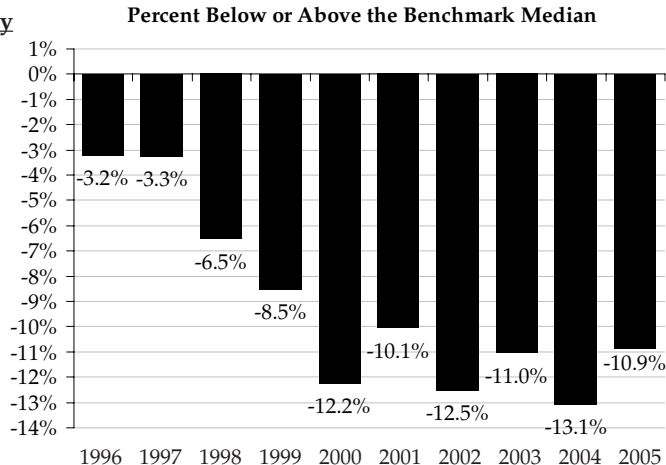
## Non-tenure Track

<u>Rank</u>	<u>Clinical</u>	<u>Research</u>	<u>Lecturer</u>	<u>Other</u>	<u>Total</u>
Professors	13	11		1	25
Associate	36	11		2	49
Assistant	107	56		2	165
Instructor	24				24
Lecturer			97	1	98
<b>Total</b>	<b>180</b>	<b>78</b>	<b>97</b>	<b>6</b>	<b>361</b>

# FACULTY SALARIES

<u>Fall</u>	<u>All-ranks Average Salary</u>	<u>Benchmark Median Salary</u>
2005	\$ 73,685	\$ 82,664
2004	71,026	81,713
2003	69,911	78,594
2002	66,953	76,547
2001	66,713	74,184
2000	64,842	73,892
1999	62,314	68,138
1998*	60,714	64,954*
1997	58,660	60,644
1996	57,024	58,916

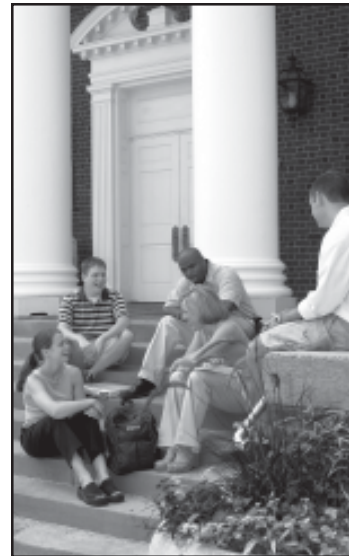
\* Using a revised set of benchmark institutions



# REVENUE (In Millions)

Source of Funds	Revised Budget	Budget
	2005-06	2006-07
State Appropriation	\$ 314.3	\$ 318.6
Tuition and Fees	203.5	221.3
County Appropriation	12.7	12.7
Endowment and Investment Income	25.2	31.0
Federal Governmental Appropriations	15.4	15.3
Gifts, Grants and Contracts	164.8	171.3
Sales and Services of Educational Activities	76.1	74.8
Transfers	45.0	45.8
Fund Balances	52.1	32.5
Affiliated Corporations	314.1	327.0
Hospital	467.6	587.6
<b>Total</b>	<b>\$ 1,690.9</b>	<b>\$ 1,837.9</b>

Note: Revised budget numbers do not total properly due to rounding.



# EXPENDITURES (In Millions)

<u>Program</u>	<u>Revised Budget 2005-06</u>	<u>Budget 2006-07</u>
Instruction	\$ 292.0	\$ 252.1
Research	275.8	272.0
Public Service	196.4	217.0
Libraries	21.9	22.5
Academic Support	67.4	68.1
Student Services	21.7	22.3
Institutional Support	77.3	117.7
Operations and Maintenance	52.3	56.4
Student Financial Aid	77.8	80.0
Auxiliary Enterprises		
Operations	114.6	118.1
Mandatory Transfers	25.2	22.9
Hospital	468.7	588.7
<b>Total</b>	<b>\$ 1,690.9</b>	<b>\$ 1,837.9</b>

<u>Category</u>	<u>Revised Budget 2005-06</u>	<u>Budget 2006-07</u>
Personnel Services	\$ 892.8	\$ 941.7
Operating Expenses	716.6	820.5
Capital Outlay	48.4	46.9
Mandatory Transfers	33.0	28.8
<b>Total</b>	<b>\$ 1,690.9</b>	<b>\$ 1,837.9</b>

Note: Revised budget numbers do not total properly due to rounding.

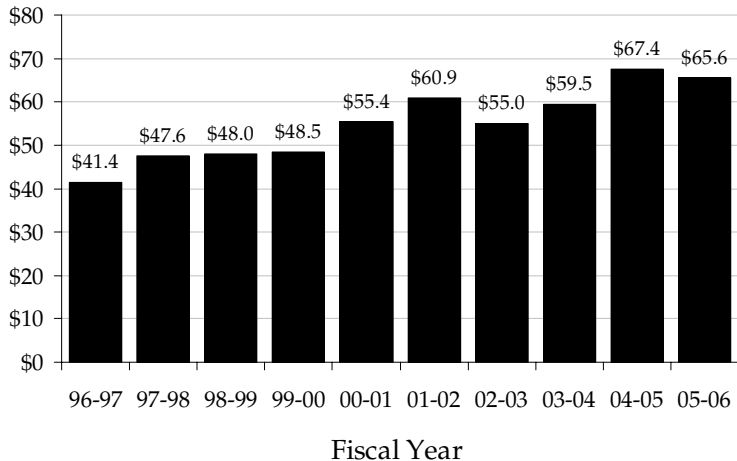
# PRIVATE GIVING (In Millions)

## 2005-2006

Alumni	\$ 13.1
Non-alumni	18.1
Corporations	12.2
Foundations	15.5
Trusts/Associations	6.6
<b>Total</b>	<b>\$ 65.6</b>

Note 1: Source amounts do not total properly due to rounding.

Note 2: Beginning in 1998-99, Private Giving no longer includes the Community College System, except LCC. With the transfer of LCC to the KCTCS in 2003-04 FY, gifts to LCC stopped being reflected in UK's Private Giving statistics.



# GRANT and CONTRACT AWARDS (In Millions)

## 2005-2006

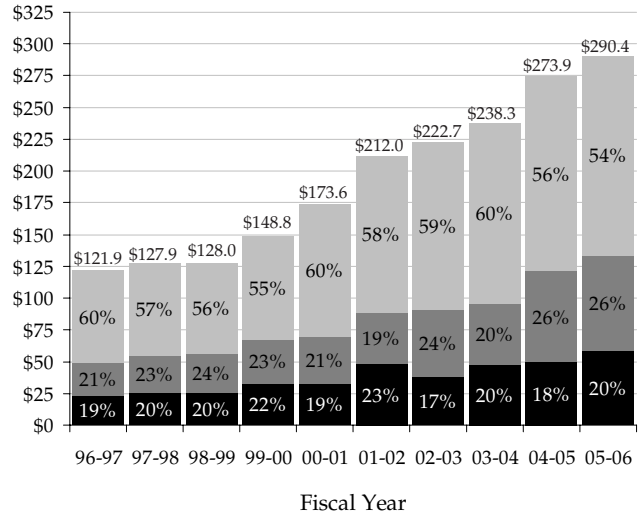
### By Category of Support

Instruction	\$ 14.1
Research	205.0
Public Service	69.9
Other	1.4
<b>Total</b>	<b>\$ 290.4</b>

### By Source

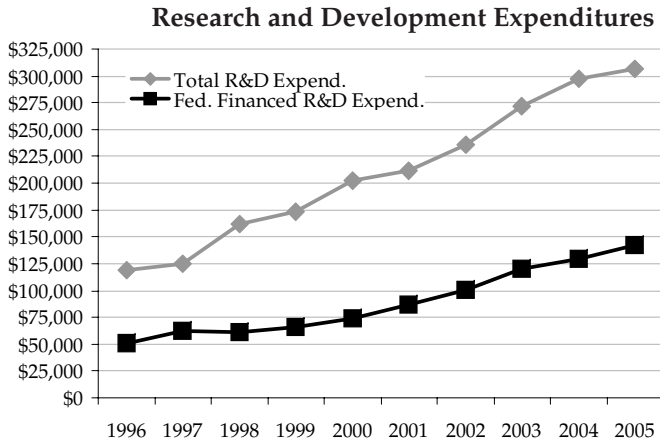
■ Federal	54%
■ State	26%
■ Business, Industry, Other	20%

Note 1: Beginning in 1998-99, Grant and Contract Awards no longer includes the Community College System, except LCC. With the transfer of LCC to the KCTCS in 2003-04 FY, awards to LCC stopped being reflected in UK's Grant and Contract Awards statistics.



# RESEARCH and DEVELOPMENT (In Thousands)

<b>Fiscal Year</b>	<b>Total R&amp;D Expenditures*</b>	<b>Federally Financed R&amp;D Expenditures*</b>
2005	\$ 306,653	\$ 142,794
2004	297,610	129,887
2003	272,062	120,003
2002	236,275	100,426
2001	211,721	86,239
2000	202,392	73,858
1999	174,034	66,184
1998	161,346	60,760
1997	124,804	62,128
1996	118,721	51,450



\*As reported to the National Science Foundation for science and engineering disciplines.

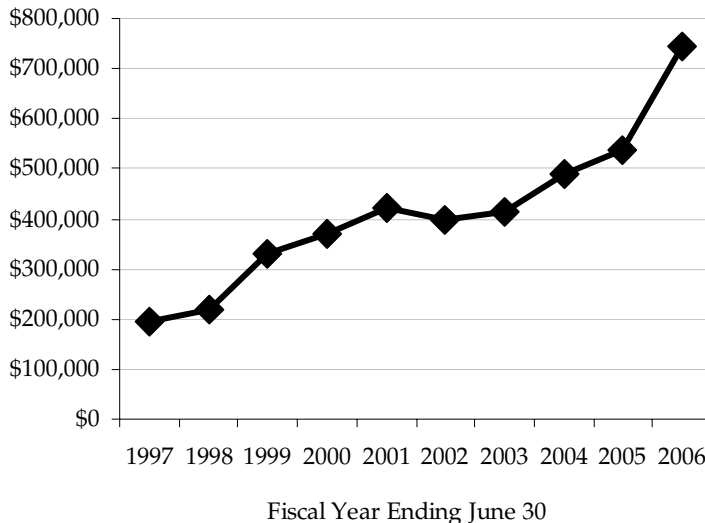
Fiscal Year Ending June 30

# UNIVERSITY ENDOWMENT (In Thousands)

<u>Fiscal Year</u>	<u>Market Value</u>
2006	\$ 746,114
2005	538,384
2004	491,098
2003	414,328
2002	399,030
2001	420,838
2000	371,373
1999	329,543
1998	219,740
1997	195,091

Note: In 2006, the Chandler Medical Center University Hospital Quasi-Endowment Fund for \$150 million was established, accounting for the large increase over the 2005 total.

## Market Value of University Endowment





# NEW FACILITIES

<b><u>Under Construction</u></b>	<b><u>Scope</u></b>	<b><u>Funding Source</u></b>	<b><u>Anticipated On-line Date</u></b>
Patient Care Facility Parking Garage (GMP 2)	\$ 32,000,000	Agency	Winter 2008
Basketball Practice Facility (Construct)	27,500,000	Agency	Spring 2007
Basketball Practice Facility (Design)	2,500,000	Agency	Spring 2007
KY Swine Dev. & Training Ctr. Feed Mill	1,740,180	Federal	Spring 2007

## **In Planning and Design**

Construct Patient Care Facility	\$ 450,000,000	Agency	Fall 2010
Biological Pharmaceutical Complex Building	135,292,000	State	Winter 2009
Student Health Facility	24,000,000	Agency	Spring 2008
Expand & Upgrade Livestock Disease Diagnostic Lab	8,500,000	State	Summer 2008
Renovate - Expand Boone Faculty Center	6,200,000	Private	Winter 2007
Horticultural Research and Education Facility	1,600,000	Agency	Fall 2006

# LAND and SPACE\*

**2005-2006**

	<u>Main Campus</u>	<u>Off Campus**</u>	<u>Total</u>
Acreage***	787	24,121	24,908
Assignable Square Footage in Buildings***			
Classroom	223,995	34,432	258,427
Laboratory	1,161,932	144,014	1,305,946
Office	1,598,155	245,894	1,844,049
Study	414,197	6,492	420,689
Special	708,653	509,625	1,218,278
General	700,666	145,342	846,008
Support	3,260,265	359,889	3,620,154
Health Care	464,723	37,539	502,262
Residential	1,282,756	173,055	1,455,811
Unclassified	231,867	102,316	334,183
<b>Total</b>	<b>10,047,209</b>	<b>1,758,598</b>	<b>11,805,807</b>

\* Excludes space provided at no cost; includes leased space

\*\* Includes research farms, Robinson Forest, substations, 4-H camps, and Adena Park

\*\*\* Source: Fall 2005 Physical Facilities and Land Inventory

# GENERAL EQUIPMENT INVENTORIES

(In Millions)

Inventory 6/30/06\*

<b>General</b>	
Instruction	\$ 41.1
Research	98.0
Public Service	15.9
Academic Support	20.2
Student Services	3.2
Institutional Support	22.3
Op & Mgt of Plant	2.9
Multifunction	14.8
<b>Subtotal</b>	<b>\$ 242.3</b>
<b>Auxiliaries</b>	<b>11.1</b>
<b>Hospital</b>	<b>120.6</b>
<b>Other</b>	<b>23.2</b>
<b>Total</b>	<b>\$ 397.2</b>

\* Comparisons to last year's data are not available due to new Equipment Reporting System (EBARS). Categories do not total properly due to rounding.

# LIBRARY COLLECTIONS

2005-2006

Volumes Held	3,406,377
Current Periodical Titles	31,897
Microforms	6,388,872
Audio-visual Materials	90,795

The Libraries' collections also include over 320 licensed networked electronic databases with nearly 35,000 electronic journals and a large collection of electronic books accessible in the University's 15 libraries and also available to faculty and students off campus via a proxy server. In addition, the collections include: 258,827 maps; over 200 current state, national and international newspapers; over 6,200 Oral History program interviews; the University Archives and Records Program; the Wendell H. Ford Public Policy Research Center; Audio-Visual Archives; Bert T. Combs Appalachian Collection; the Public Policy Archives; the Rare Book Collection which includes the W. Hugh Peal Collection of 19th century English and related literature; and the Preservation Reformatting Center. The Center for Digital Programs creates digital content for the Kentuckiana Digital Library including electronic texts, digitized photographs, images and archival finding aids. The Library is a regional depository for U.S. government publications and is also a depository for European Union and Canadian publications, British Parliamentary Papers, Kentucky government publications, and technical reports from federal agencies, all selectively collected.



# BENCHMARK INSTITUTIONS

Michigan State University

North Carolina State University

Ohio State University

Pennsylvania State University

Purdue University

Texas A&M University

University of Arizona

University of California - Los Angeles

University of Florida

University of Georgia

University of Illinois - Urbana-Champaign

University of Iowa

University of Maryland - College Park

University of Michigan - Ann Arbor

University of Minnesota - Twin Cities

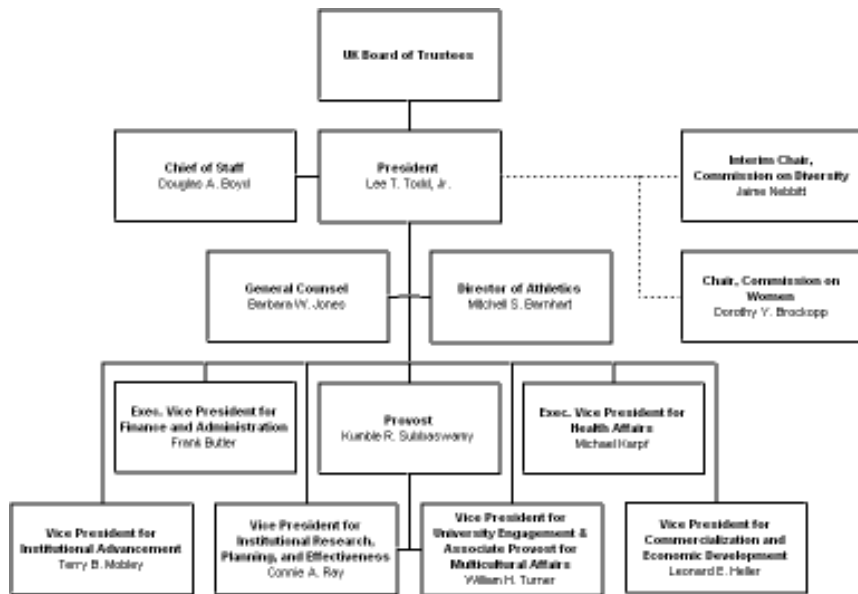
University of North Carolina - Chapel Hill

University of Virginia

University of Washington

University of Wisconsin - Madison

# ADMINISTRATIVE ORGANIZATION



# BOARD of TRUSTEES

<b>Mira S. Ball</b>	Lexington	(2010)	<b>Sandy Patterson</b>	Alumni Member	(2012)
<b>Stephen P. Branscum</b>	Russell Springs	(2010)	<b>Phillip R. Patton</b>	Glasgow	(2009)
<b>Jonah Brown</b>	Student Member	(2007)	<b>Erwin Roberts</b>	Louisville	(2012)
<b>Penelope Brown</b>	Corbin	(2011)	<b>C. Frank Shoop</b>	Lexington	(2008)
<b>Dermontti Dawson</b>	Nicholasville	(2011)	<b>Myra Leigh Tobin</b>	Alumni Member	(2008)
<b>Jeffrey Dembo</b>	Faculty Member	(2008)	<b>JoEtta Y. Wickliffe</b>	Harrodsburg	(2009)
<b>Ann Brand Haney</b>	Nancy	(2010)	<b>Billy B. Wilcoxson</b>	Lexington	(2008)
<b>James F. Hardymon</b>	Lexington	(2009)	<b>Russ Willams</b>	Staff Member	(2007)
<b>Pamela R. May</b>	Pikeville	(2007)	<b>Ernest Yanarella</b>	Faculty Member	(2007)
<b>Billy Joe Miles</b>	Owensboro	(2007)	<b>Barbara S. Young</b>	Lexington	(2007)

# ADMINISTRATIVE HISTORY

- 1865** Agricultural and Mechanical College (A&M) established as part of Kentucky University
- 1869** James K. Patterson became President of A&M
- 1878** A&M separated from Kentucky University
- 1882** A&M moved to current location in Lexington
- 1885** Ag. Experiment Station opened
- 1889** College of Agriculture established
- 1908** College of Arts and Sciences and College of Law established; A&M name changed to "State University, Lexington, Kentucky"
- 1909** University Library established
- 1911** Henry S. Barker became President of State University
- 1916** State University renamed University of Kentucky
- 1917** Frank L. McVey became President of UK; Graduate School established
- 1918** College of Engineering established
- 1923** College of Education established
- 1925** College of Business and Economics established
- 1941** Herman L. Donovan became President
- 1947** College of Pharmacy moved to UK
- 1956** Frank G. Dickey became President
- 1957** Ashland Extension Center established
- 1960** Medical Center established; College of Medicine admitted first class; College of Nursing admitted first class; Henderson Extension Center and Southeast Extension Center established
- 1962** College of Dentistry admitted first class; University Hospital opened
- 1963** John W. Oswald became President
- 1964** Community College System established under UK; College of Architecture established
- 1965** Lexington Technical Institute (LTI) established
- 1966** College of Allied Health Professions established
- 1967** College of Home Economics established
- 1968** Albert D. Kirwan became President
- 1969** College of Social Work established; Otis A. Singletary became President
- 1970** College of Library and Information Science established
- 1976** College of Communications and College of Fine Arts established
- 1982** University reorganized with a Central Administration and three sectors headed by Chancellors (Lexington Campus, Medical Center, and Community College System)
- 1984** LTI became Lexington Community College
- 1987** David P. Roselle became President
- 1990** Charles T. Wethington, Jr. became President
- 1993** College of Communications and Information Studies established
- 1998** William T. Young Library opened; All Community Colleges (except LCC) transferred to the KCTCS
- 2001** Lee T. Todd, Jr. became President; University reorganized with a Provost model
- 2002** College of Design established
- 2004** LCC transferred to the KCTCS; College of Public Health established



# VALUES

The values of the University guide its decisions and the behavior of its community. Its core values are:

- *Integrity*
- *Academic excellence and academic freedom*
- *Mutual respect and human dignity*
- *Embracing diversity*
- *Personal and institutional responsibility and accountability*
- *Shared governance*
- *A sense of community*
- *Sensitivity to work-life concerns*
- *Civic responsibility*
- *Service to society*

-- Adopted by the Board of Trustees, October 10, 2006

## UK's Top 20 Business Plan

By 2020, UK will...

- Increase enrollment by 7,000 to 34,000
- Increase the graduation rate to more than 72 percent
- Increase bachelor's degrees awarded from 3,300 to 6,350
- Increase doctorates awarded from 276 to 465
- Increase the number of faculty by 625 to more than 2,500
- Increase research expenditures by \$470 million to \$768 million
- Increase engagement and service efforts throughout the state to improve agriculture, health care, economic development and communities.



**UK**  
UNIVERSITY  
OF KENTUCKY

*An Equal Opportunity University*

*Published by the UK Office of  
Institutional Research*