

impression  
classy



impression  
classy



Pillan

Mado

Halis

Viya



Pillan



Madol



Halis

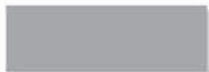


Viya

impression classy



*Colours*



An abstract graphic consisting of several overlapping, wavy, light blue lines that flow from the top left towards the bottom right, creating a sense of movement and depth. The lines vary in opacity and thickness, with some appearing more prominent than others.

Pillan



Pillan

Mado

Halis

Viya



PN\_01



PN\_06



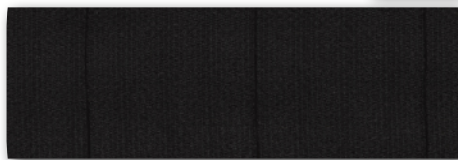
PN\_02



PN\_07



PN\_03



PN\_08



PN\_04



PN\_05



The image features a series of overlapping, wavy lines in various shades of light blue and white, creating a sense of motion and depth. The lines originate from the left side and curve towards the right, with some lines appearing more prominent than others. The overall effect is that of a stylized, flowing ribbon or a series of overlapping waves.

Mado





Pillan

Mado

Halis

Viya



MA\_01



MA\_02



MA\_03



MA\_04



MA\_05



MA\_06



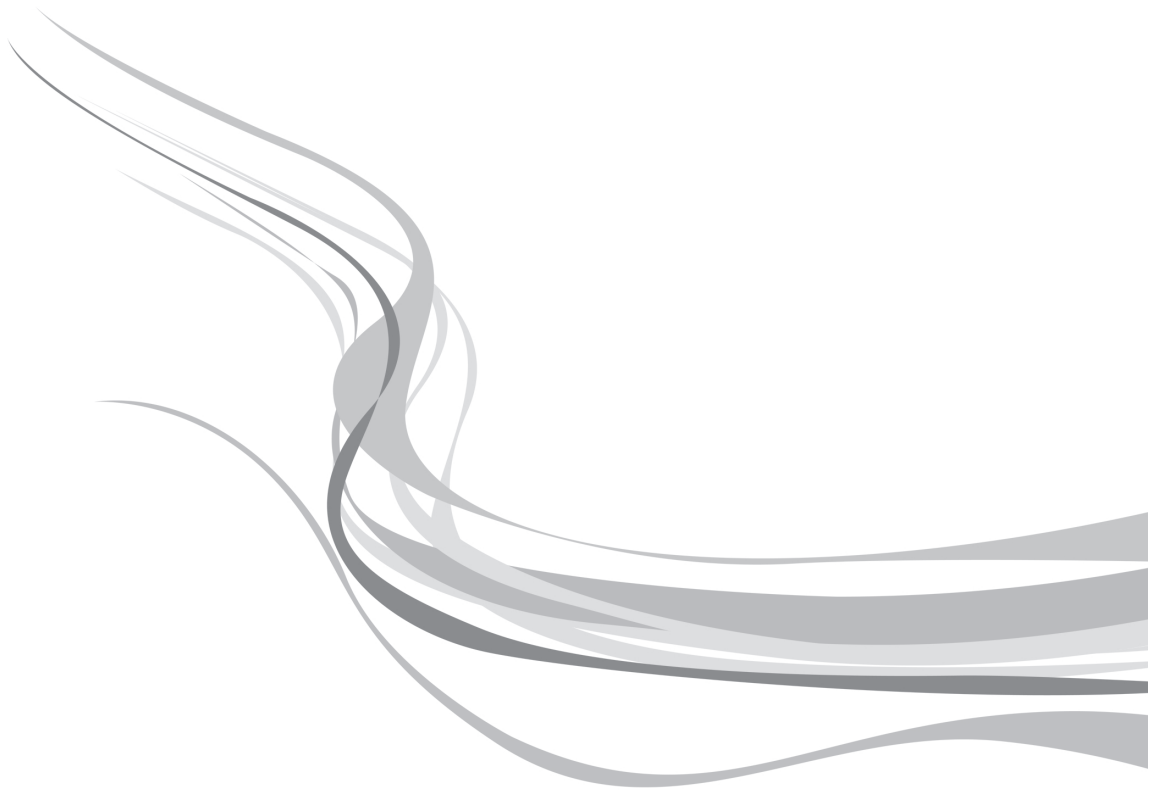
MA\_07



MA\_08



MA\_09



An abstract graphic consisting of several overlapping, wavy, light blue lines that flow from the top left towards the bottom right, creating a sense of movement and depth. The lines vary in opacity and thickness, with some appearing more prominent than others.

Halis



Pillan

Mado

Halis

Viya



HA\_01



HA\_02



HA\_03



HA\_04



HA\_05



HA\_06





Viya





Pillan

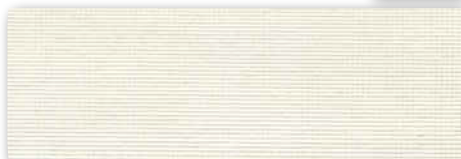
Mado

Halis

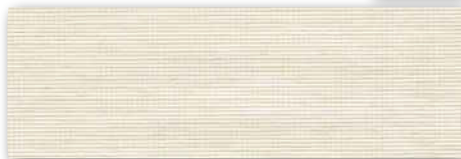
Viya



VI\_01



VI\_02



VI\_03



VI\_04



VI\_05



VI\_06



VI\_07



