

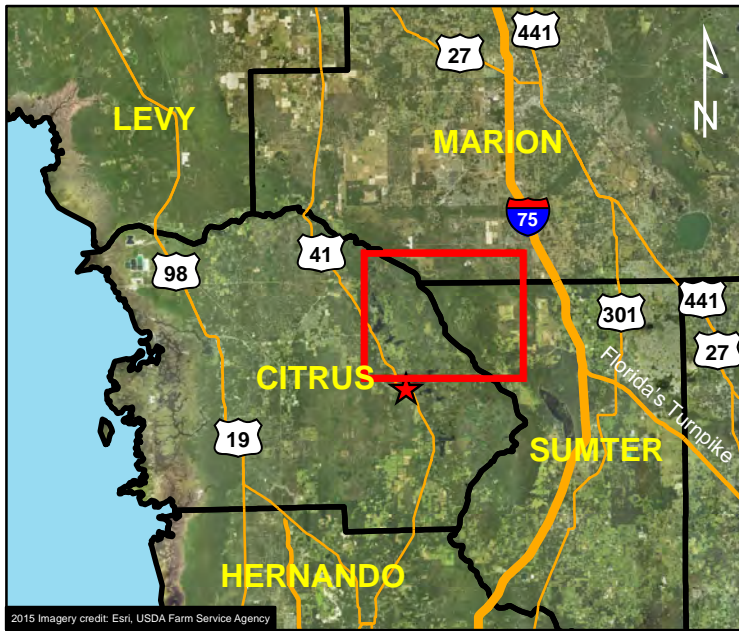
Alligator Harvest Unit Maps

These maps are offered as a courtesy to familiarize participants with the general location of each harvest unit (excluding county-wide harvest units). Some harvest units are more restrictive than others so please refer to your permit for full details of the harvest unit description, boundary, and harvest period.

Maps of the county-wide harvest units are currently unavailable. To search for bodies of water that have been hunted under a county-wide permit in the past, please use the “Statewide Alligator Harvest Data Search” resource located on the MyFWC.com website here:

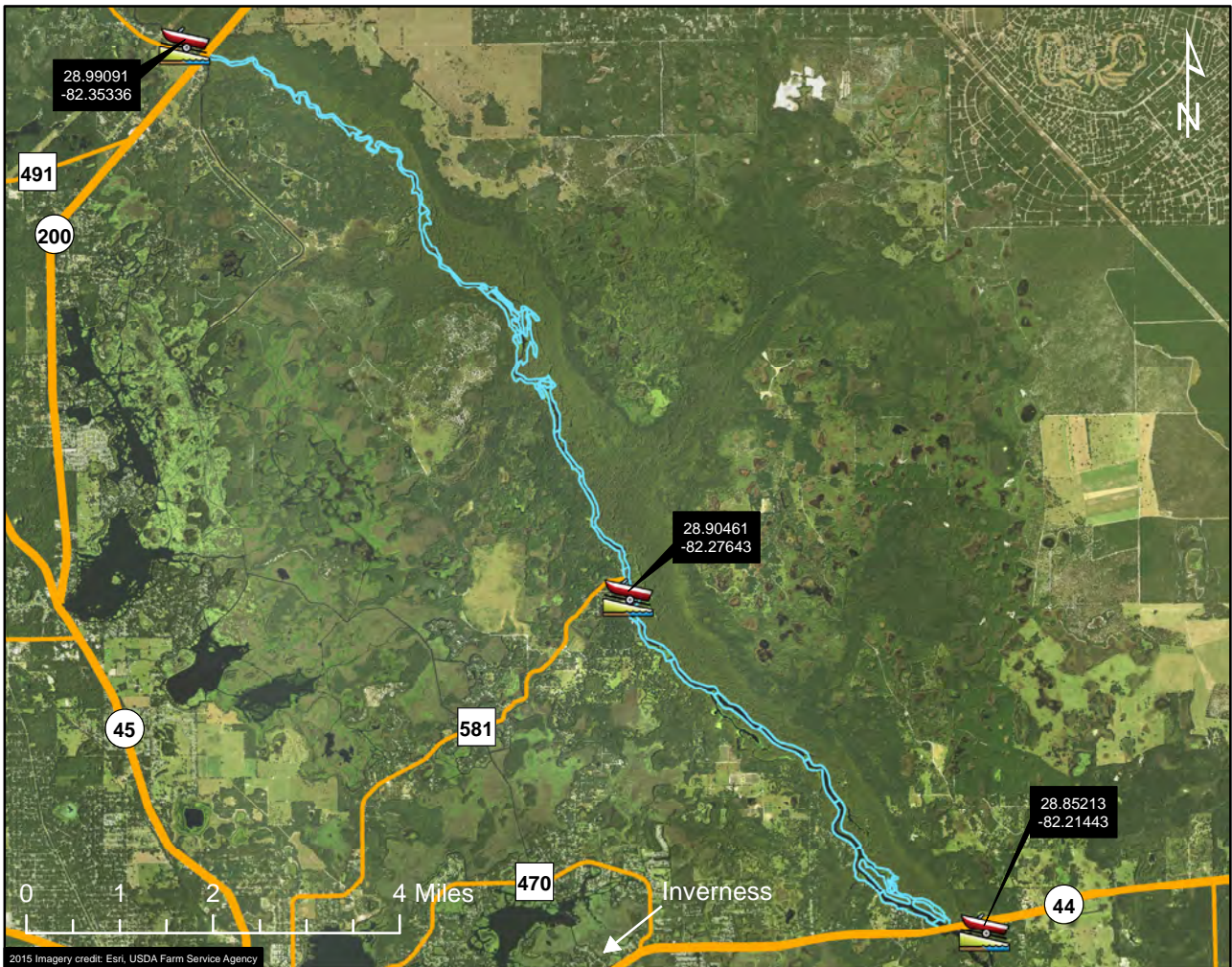
<http://myfwc.com/wildlifehabitats/managed/alligator/harvest/data-search/>.

AMU 516 - Withlacoochee River North



Legend

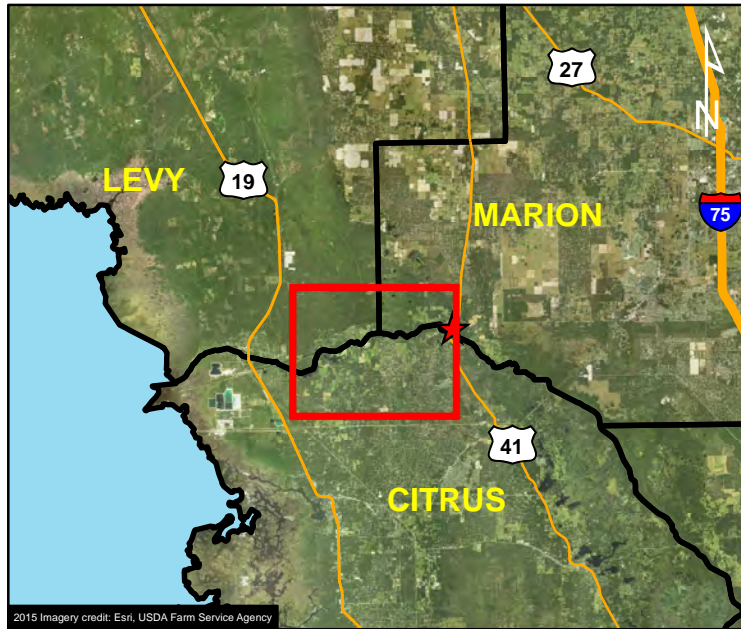
- Inverness
- Public Boat Ramp
- Road
- Harvest Unit



HARVEST UNIT DESCRIPTION:

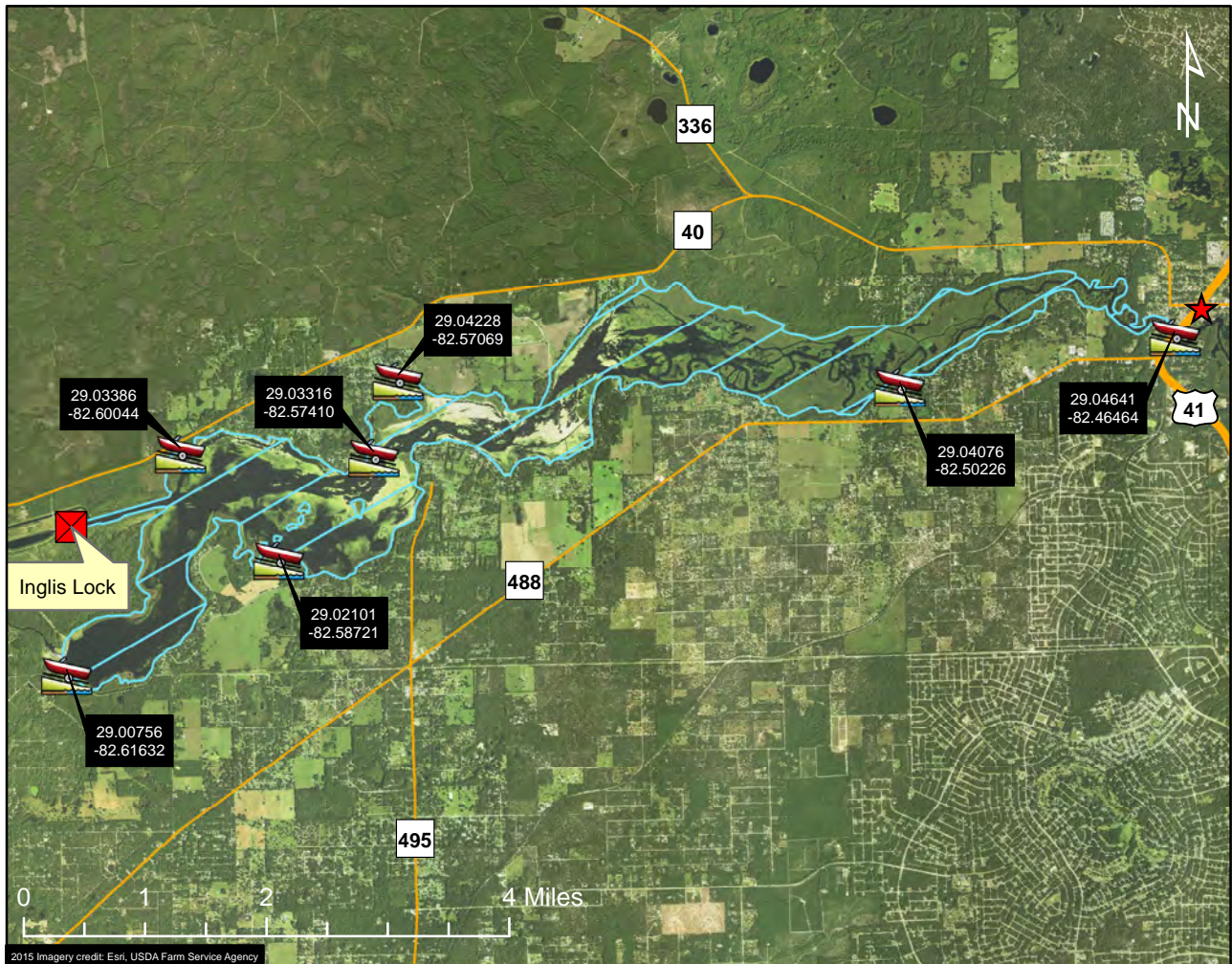
The state-owned waters located within the water line of the Withlacoochee River in Citrus, Marion, and Sumter counties; north of SR 44 and south of SR 200; excluding Lake Tsala Apopka, Henderson Lake, and the Hernando Pool and more than 50 yards up any connecting natural or manmade waterway. This map is offered as a courtesy to familiarize participants with the general location of the harvest unit. Please refer to your permit for full details of the harvest unit description and boundary.

AMU 518 - Lake Rousseau



Legend

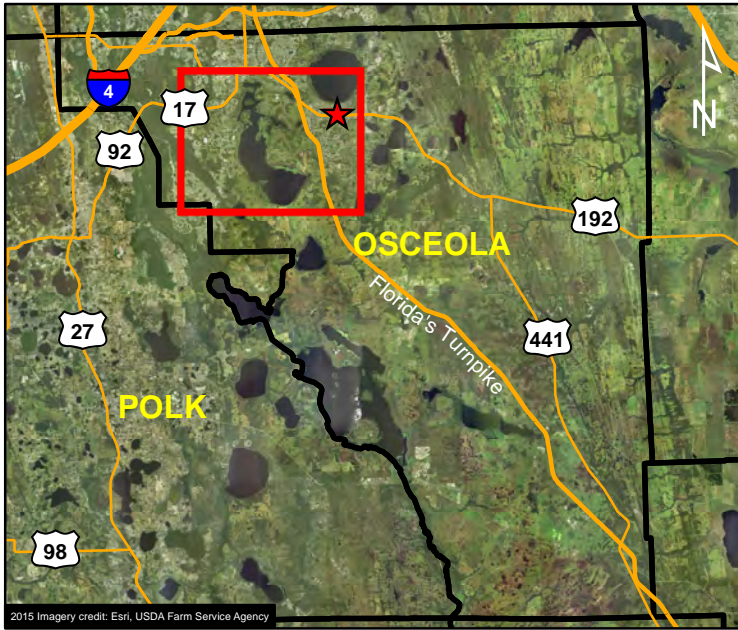
- Dunnellon
- Public Boat Ramp
- Road
- Harvest Unit




HARVEST UNIT DESCRIPTION:

The state-owned waters located within the water line of Lake Rousseau in Citrus, Levy, and Marion counties; west of US Hwy. 41; and including the Florida Barge Canal from Lake Rousseau to the Inglis Lock; excluding more than 50 yards up any connecting natural or manmade waterway. This map is offered as a courtesy to familiarize participants with the general location of the harvest unit. Please refer to your permit for full details of the harvest unit description and boundary.

AMU 520 - Lake Tohopekaliga



Legend

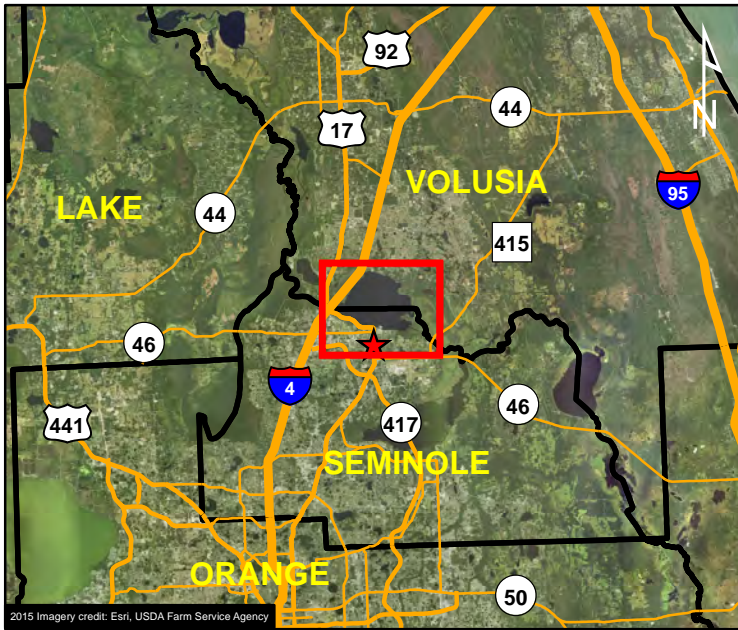
- ★ Saint Cloud
-  Public Boat Ramp
- Road
- Harvest Unit



HARVEST UNIT DESCRIPTION:

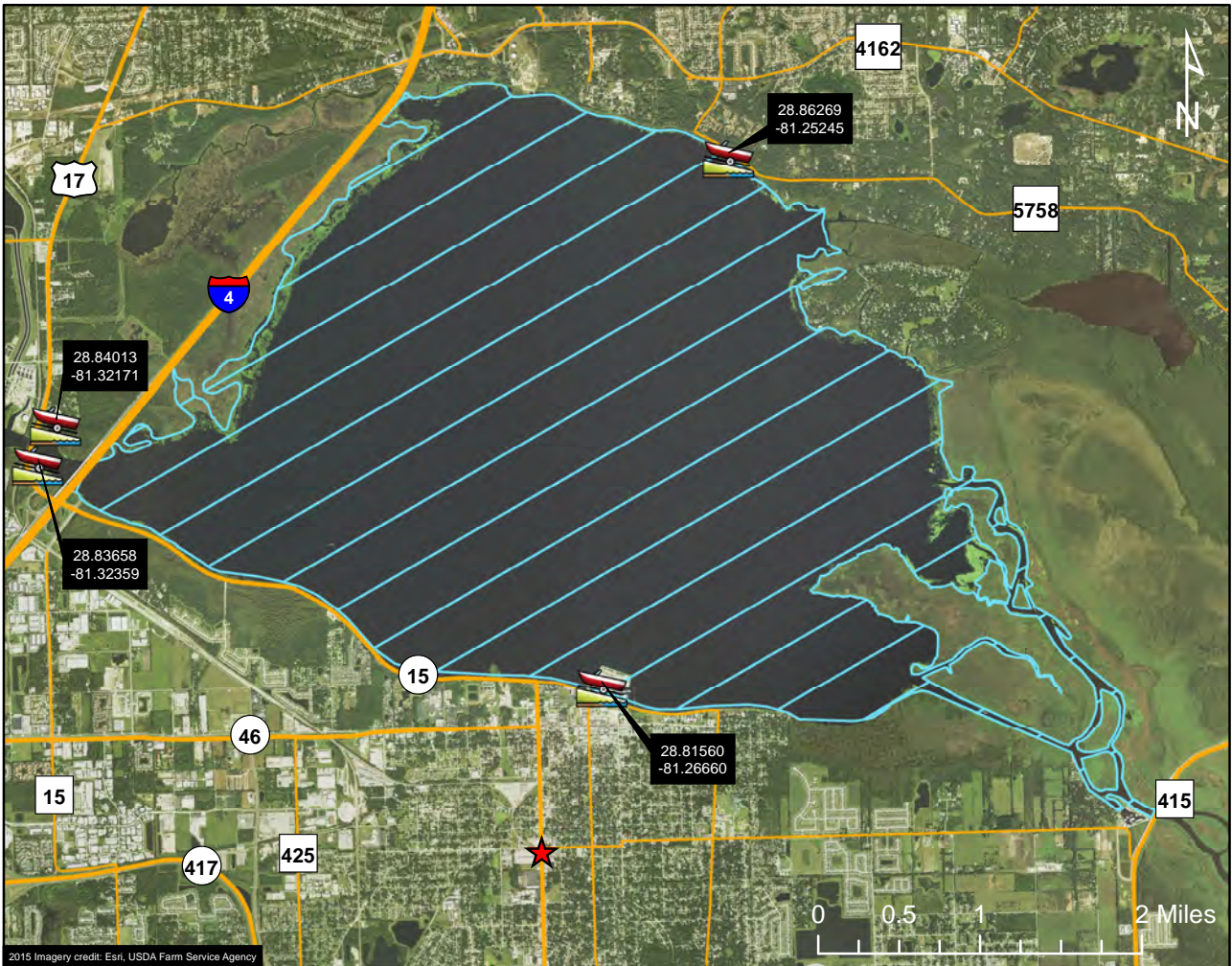
The state-owned waters located within the water line of Lake Tohopekaliga in Osceola County; and south of CR 525; excluding more than 50 yards up any connecting natural or manmade waterway. This map is offered as a courtesy to familiarize participants with the general location of the harvest unit. Please refer to your permit for full details of the harvest unit description and boundary.

AMU 527 - Lake Monroe



Legend

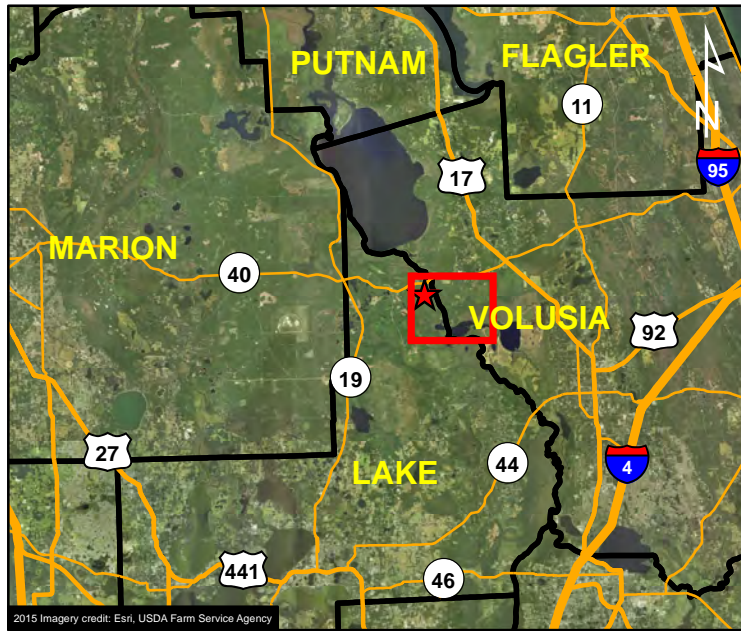
- ★ Sanford
- Public Boat Ramp
- Road
- Harvest Unit








HARVEST UNIT DESCRIPTION:

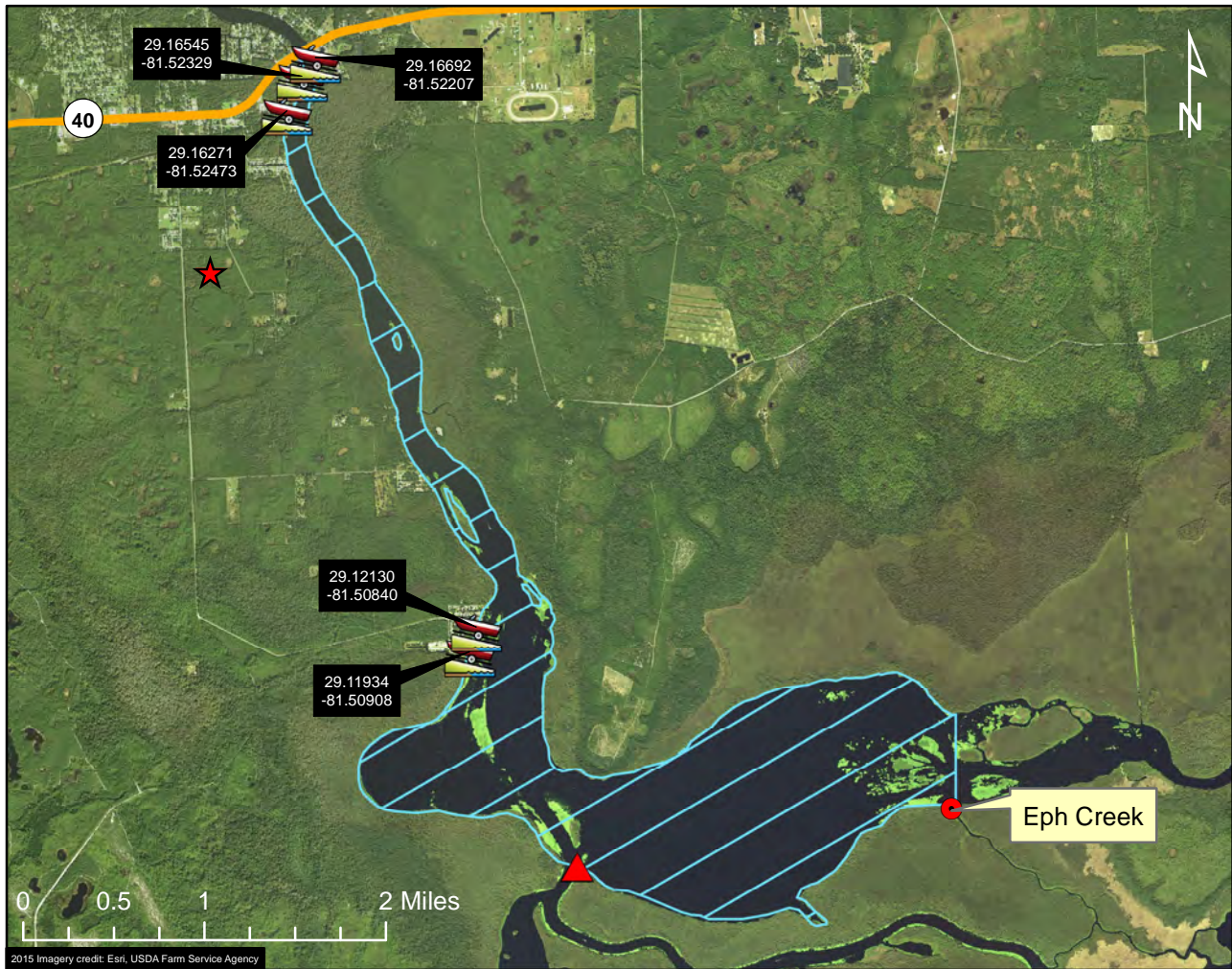
The state-owned waters located within the water line of the St. Johns River in Volusia and Seminole counties; east of I-4 and west of CR 415; and including Lake Monroe; excluding more than 50 yards up any connecting natural or manmade waterway. This map is offered as a courtesy to familiarize participants with the general location of the harvest unit. Please refer to your permit for full details of the harvest unit description and boundary.

AMU 528 - Lake Dexter



Legend

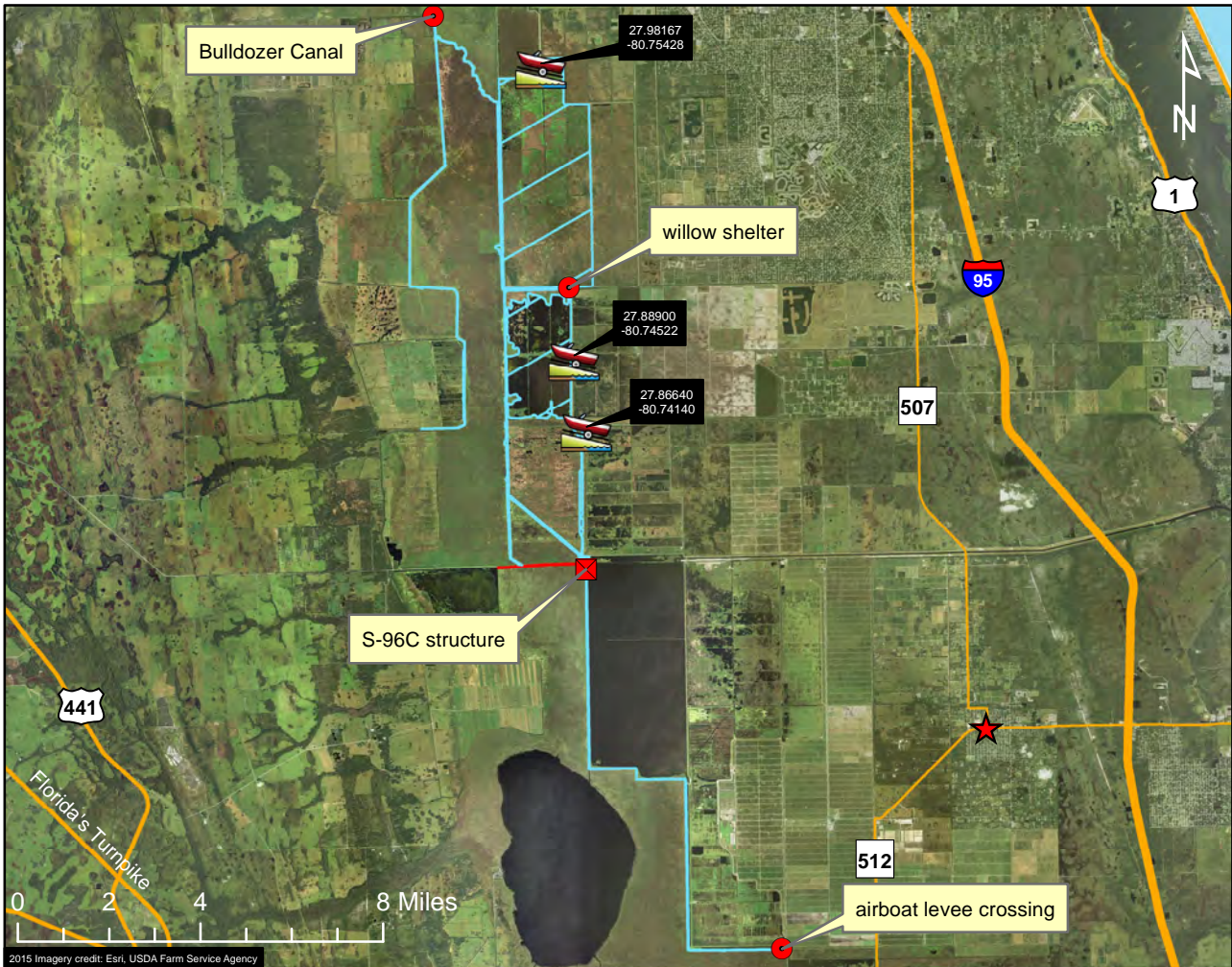
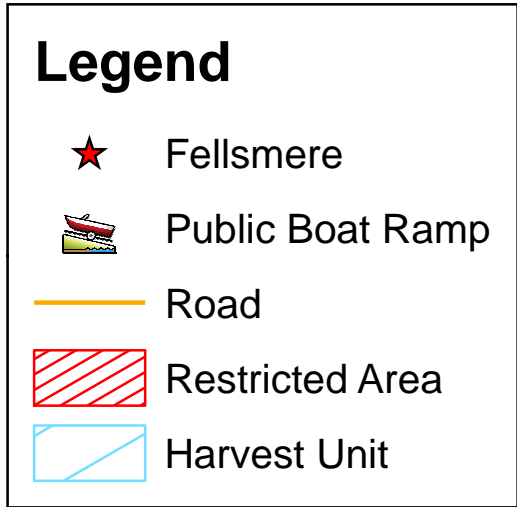
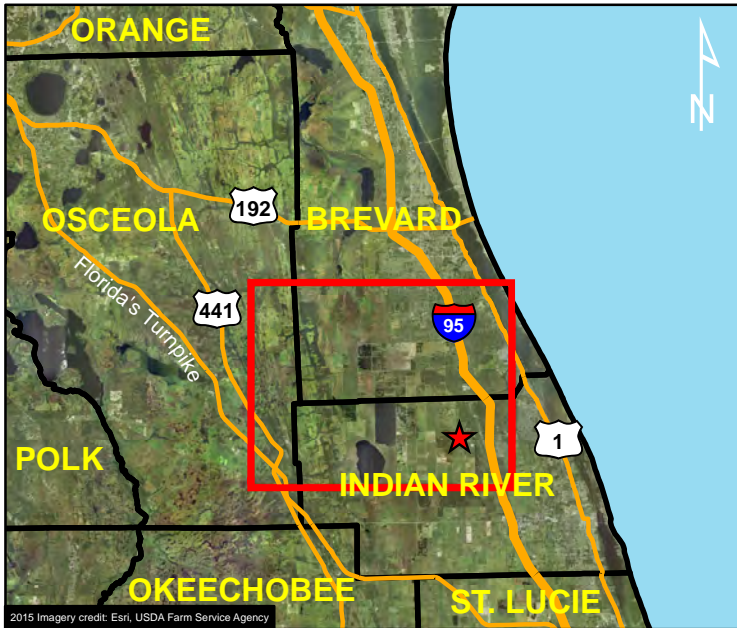
-  Astor
-  Public Boat Ramp
-  Channel Marker 15
-  Road
-  Harvest Unit



HARVEST UNIT DESCRIPTION:

The state-owned waters located within the water line of the St. Johns River in Volusia and Lake counties; south of SR 40 and north of Channel Marker 15 on the St. Johns River; and including that portion of Lake Dexter west of a north-south line extending from the mouth of Eph Creek; excluding more than 50 yards up any connecting natural or manmade waterway. This map is offered as a courtesy to familiarize participants with the general location of the harvest unit. Please refer to your permit for full details of the harvest unit description and boundary.

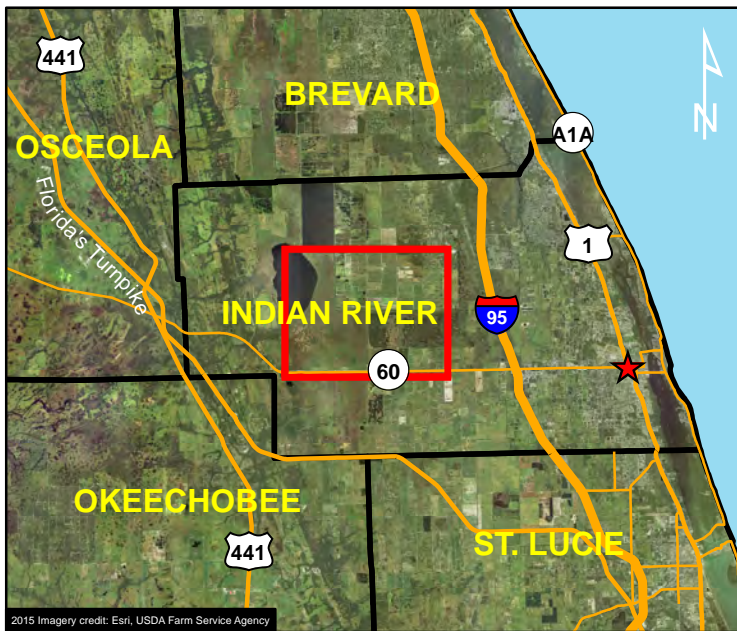
AMU 540 - St. Johns River Upper Basin Canals








HARVEST UNIT DESCRIPTION:

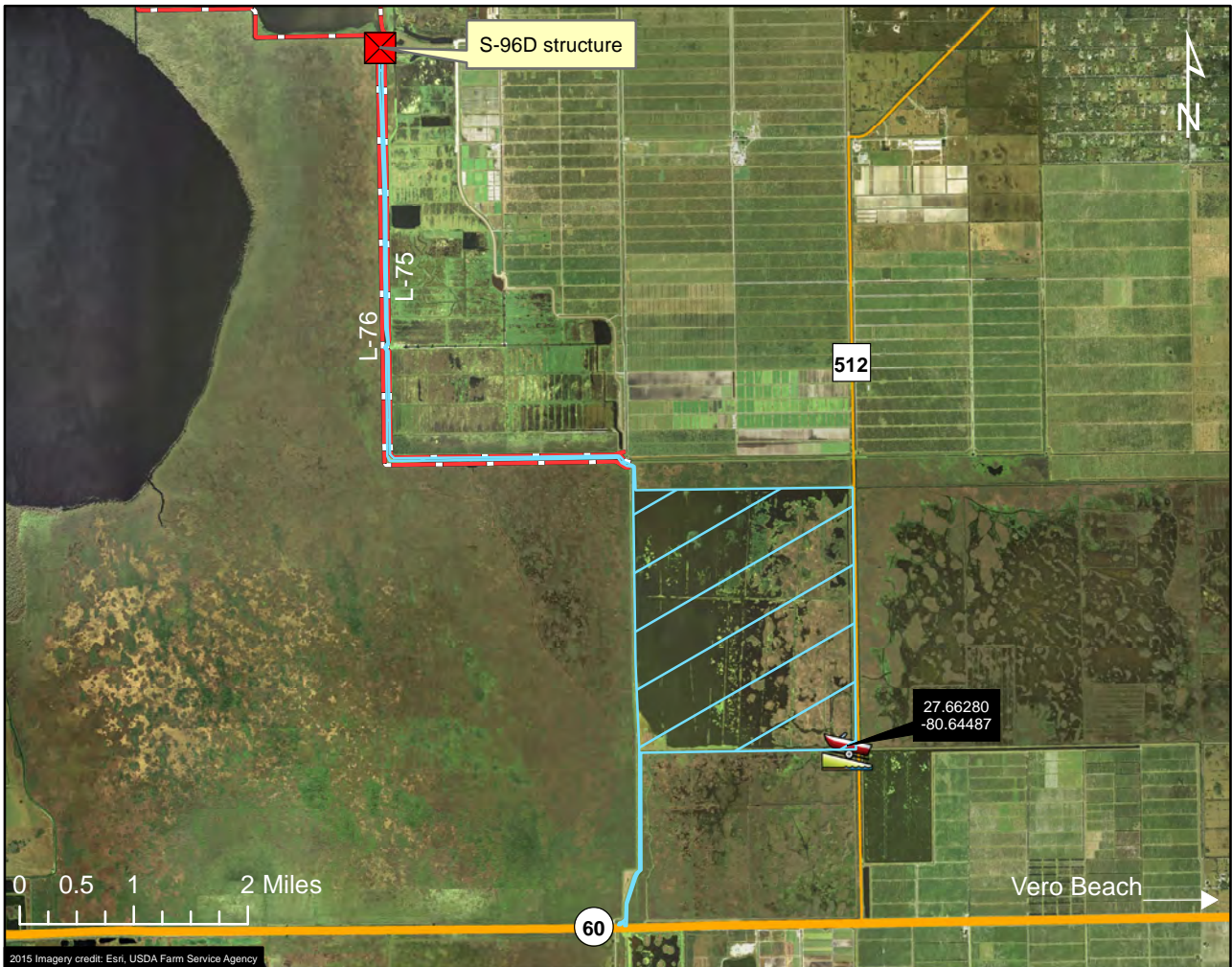
The St. Johns River Water Management District lands in Brevard and Indian River counties; including the western perimeter canals of the Three Forks Marsh Conservation Area south of the Bulldozer Canal, the St. Johns River channel south of Bulldozer Canal to the C-40 canal, the canal running eastward from the C-40 canal to the willow shelter, the Satori and Mary A impoundments (the area bounded on the west by the C-40 canal and on the east by the T.M. Goodwin WMA), the Three Forks Water Management Area (Lake Lawton) west of longitude 80.7373 W, and the canal west and south of the L-76 levee between the S-96C structure and the airboat levee crossing at the northwest corner of the Blue Cypress Water Management Area; excluding the canal along the L-74W levee and more than 50 yards up any connecting natural or manmade waterway. This map is offered as a courtesy to familiarize participants with the general location of the harvest unit. Please refer to your permit for full details of the harvest unit description and boundary.

AMU 542 - Blue Cypress Water Management Area



Legend

-  Vero Beach
-  Public Boat Ramp
-  Road
-  Levee
-  Harvest Unit



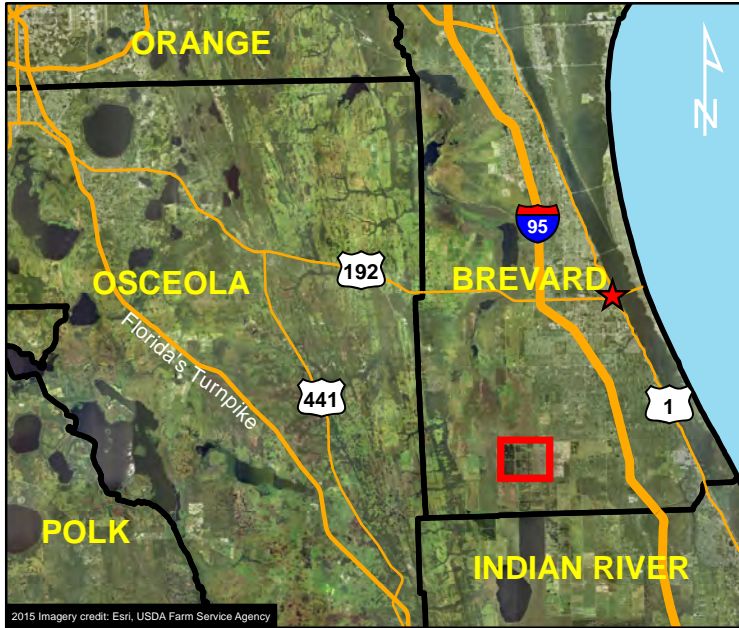
HARVEST UNIT DESCRIPTION:

The St. Johns River Water Management District land known as the Blue Cypress Water Management Area in Indian River County; west and south of the L-75 levee, north of SR 60, and east of the L-76 levee; and including the canal between the L-76 and L-75 levees from the northwest corner of Blue Cypress Water Management Area to the S-96D structure; excluding more than 50 yards up any connecting natural or manmade waterway.

This map is offered as a courtesy to familiarize participants with the general location of the harvest unit.

Please refer to your permit for full details of the harvest unit description and boundary.

AMU 543 - T.M. Goodwin Waterfowl Management Area (Broadmoor Unit)



Legend

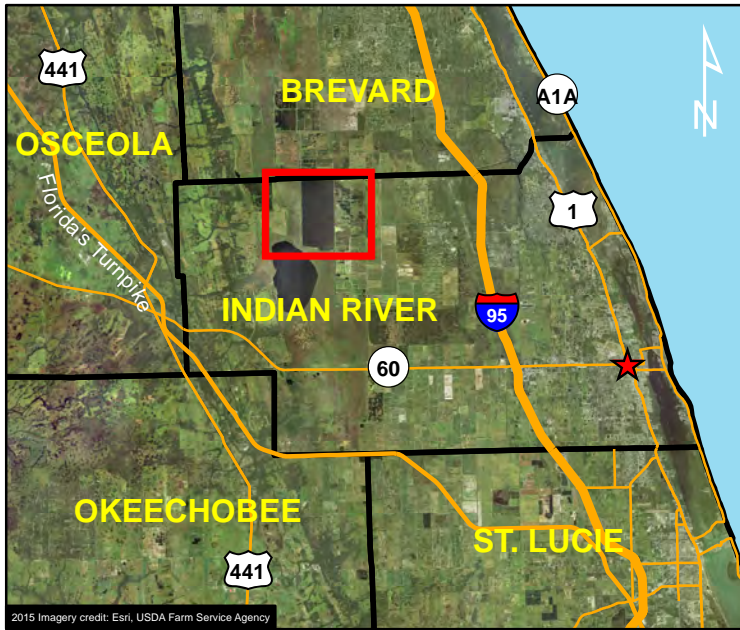
- Melbourne
- Public Boat Ramp
- Levee
- Road
- Harvest Unit








HARVEST UNIT DESCRIPTION:

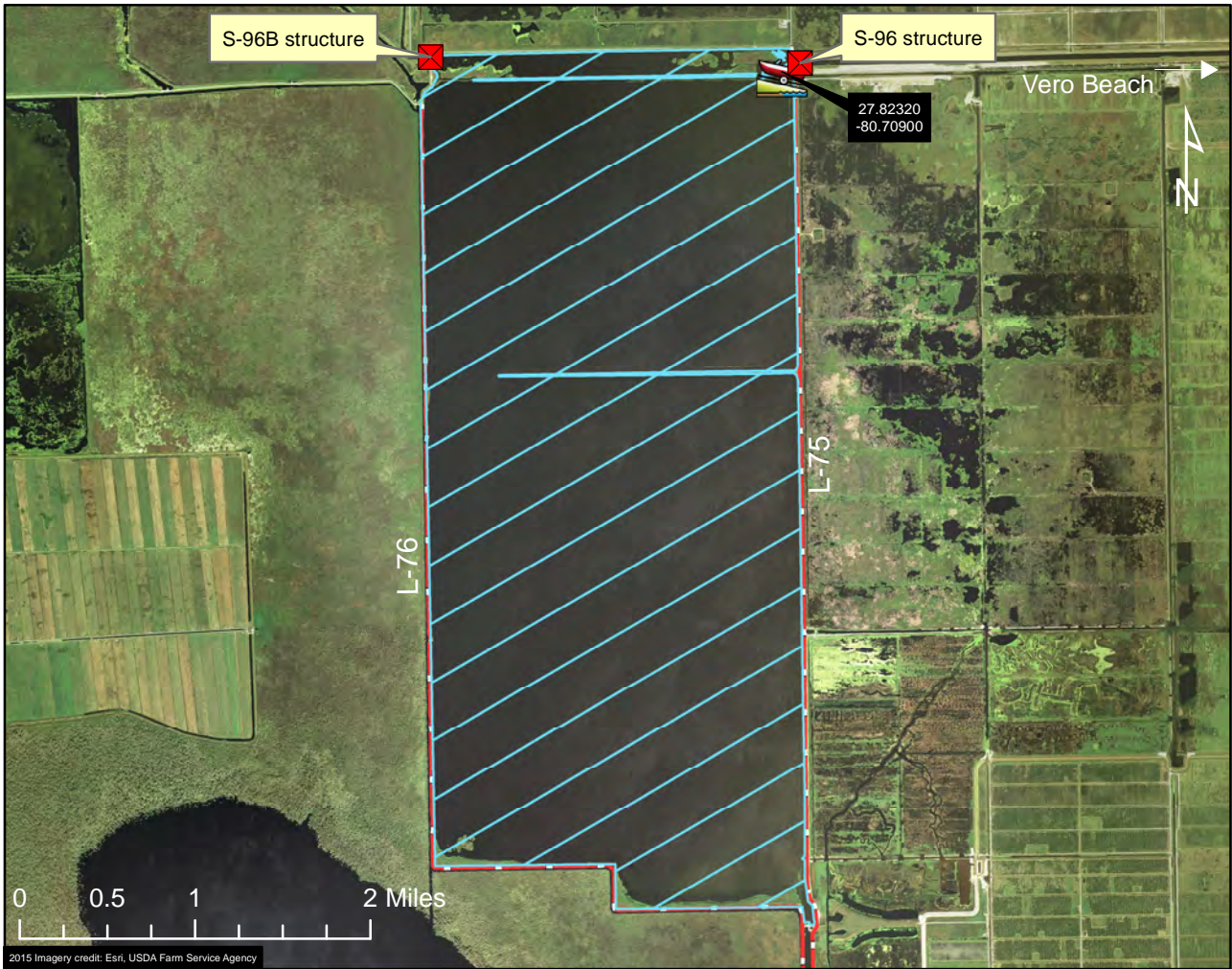
The Broadmoor Unit of the St. Johns River Water Management District land known as the T.M. Goodwin Waterfowl Management Area in Brevard County; excluding the Goodwin Unit and more than 50 yards up any connecting natural or manmade waterway. This map is offered as a courtesy to familiarize participants with the general location of the harvest unit. Please refer to your permit for full details of the harvest unit description and boundary.

AMU 544 - Stick Marsh



Legend

-  Vero Beach
-  Public Boat Ramp
-  Levee
-  Road
-  Harvest Unit



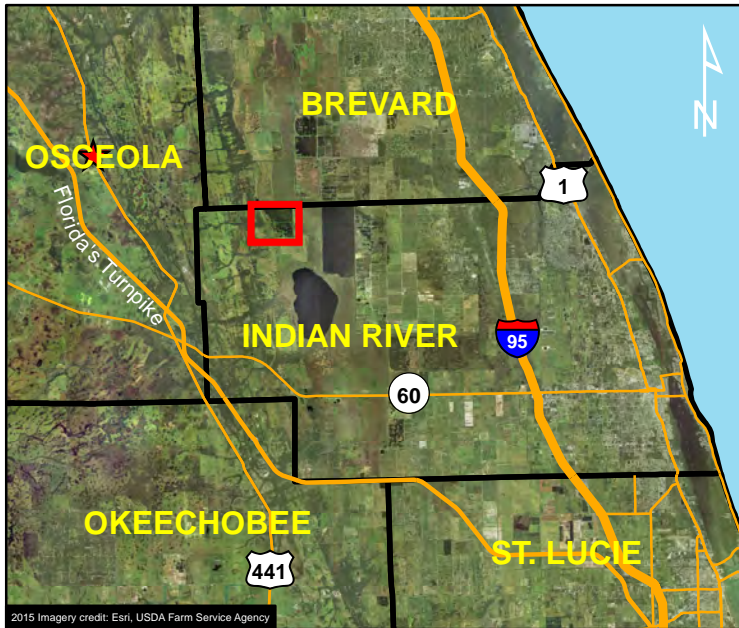
HARVEST UNIT DESCRIPTION:

The St. Johns River Water Management District land known as Stick Marsh in Indian River County; west of the L-75 levee, north and east of the L-76 levee, and south of the levee north of C-54 canal between the S-96 and S-96B structures; excluding more than 50 yards up any connecting natural or manmade waterway.

This map is offered as a courtesy to familiarize participants with the general location of the harvest unit.







Please refer to your permit for full details of the harvest unit description and boundary.

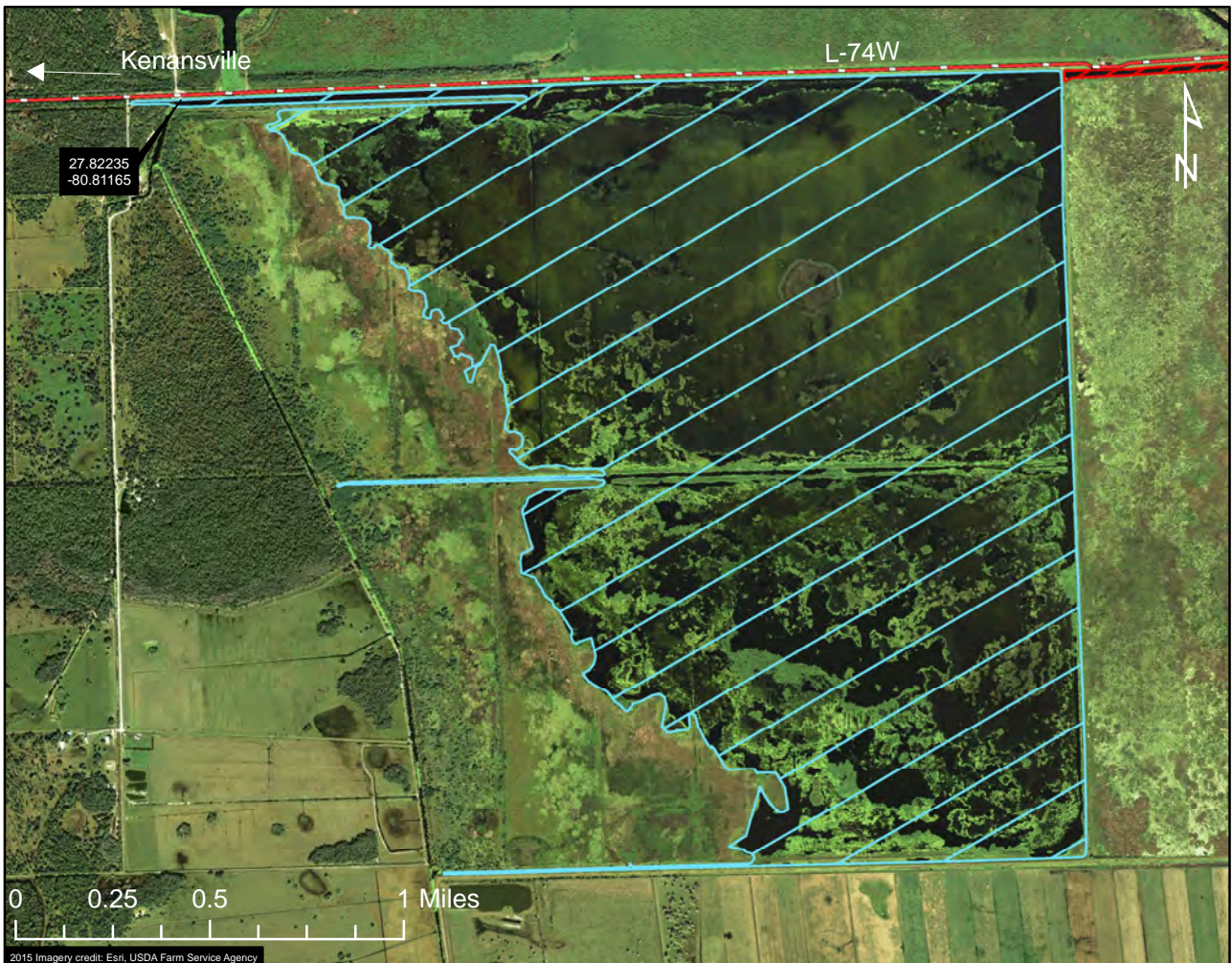
AMU 545 - Kenansville Lake



2015 Imagery credit: Esri, USDA Farm Service Agency

Legend

-  Kenansville
-  Public Boat Ramp
-  Levee
-  Road
-  Restricted Area
-  Harvest Unit



2015 Imagery credit: Esri, USDA Farm Service Agency

HARVEST UNIT DESCRIPTION:

The St. Johns River Water Management District land known as Kenansville Lake in Indian River County; excluding the canal along the L-74W levee east of Kenansville Lake and more than 50 yards up any connecting natural or manmade waterway. This map is offered as a courtesy to familiarize participants with the general location of the harvest unit. Please refer to your permit for full details of the harvest unit description and boundary.