



PCEP FEIR ADDENDUM #5 – RELOCATION OF PS-3 BURLINGAME

Board of Directors
August 2, 2018
Agenda Item # 4I



- A Paralleling Station balances the voltage through the Overhead Contact System
- January 2015 – Peninsula Corridor Electrification Project (PCEP) Final Environmental Impact Report (EIR) approved with original Paralleling Station 3 (PS-3) location at California/Lincoln
- January 2017 – Burlingame Grade Separation Final Project Study Report issued setting aside budget to relocate PS-3 at California/Lincoln
- March 2018 – PCEP was requested to resolve conflict between Burlingame Grade Separation wall and the original PS-3 location
- April 2018 – JPB staff worked with Burlingame staff to identify three additional alternative locations for PS-3



Paralleling Station Rendering
at California/Lincoln



Broadway Grade Separation Rendering



- Having PCEP relocate PS-3 now will avoid future BGSP construction activities and will save \$8 million to \$10 million (2018 dollars) in BGSP project costs
- Option 3 was identified and selected by Burlingame staff as a new potential site (along California Avenue, south of Mills Avenue on the west-side of the Caltrain tracks)
- The other two options were not advanced because of schedule, cost and operation/maintenance concerns

- Addendum # 5 to the PCEP FEIR did not identify new significant impacts or substantial increases in the severity of previously identified impacts requiring revisions to the Final EIR
- Vegetation screening of PS-3 will be added
- A project tree replacement program complying with the City tree ordinance will be implemented

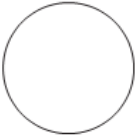


Existing View of New Location for PS-3 at California/Mills



Simulated View of PS-3 at California/Mills

- July 2018 – To notify residents of a public meeting held on July 18 to discuss construction elements of the PCEP (including relocation of PS-3), JPB staff:
 - Sent out mailers to approximately 6,000 households
 - Issued press release
 - Advertised using social media
 - Posted meeting notice to NextDoor (10,000 users in Burlingame)
 - Emailed 100 community members who are signed up for project updates in Burlingame
 - Burlingame helped promote the meeting through their newsletter
 - Hung door hangers to impacted residents
- August 1, 2018 – Additional community meeting held to provide residents with more information about the paralleling station location change



CalMod

CALTRAIN MODERNIZATION PROGRAM
Paralleling Station Relocation Notice

CALTRAIN ELECTRIFICATION

Caltrain Electrification is a key component of the Caltrain Modernization Program which will electrify the Caltrain Corridor from San Francisco's 4th and King Station to approximately the Tamien Station in San Jose and replace diesel-hauled with Electric Multiple Unit (EMU) trains. Caltrain electrification is scheduled to be operational by 2022.

RELOCATION OF PARALLELING STATION 3

On August 2, the Peninsula Corridor Joint Powers Board (Caltrain) will consider an addendum to the Environmental Impact Report (EIR) for the Caltrain Electrification Project. The addendum details the relocation of Paralleling Station 3 (PS-3) to a new location along California Avenue, south of Mills Avenue (exhibit on the back). PS-3 is one of 10 facilities which will provide and distribute power to Caltrain's new electrified system. The addendum concludes that there are no new significant impacts in relocating PS-3 to this location.

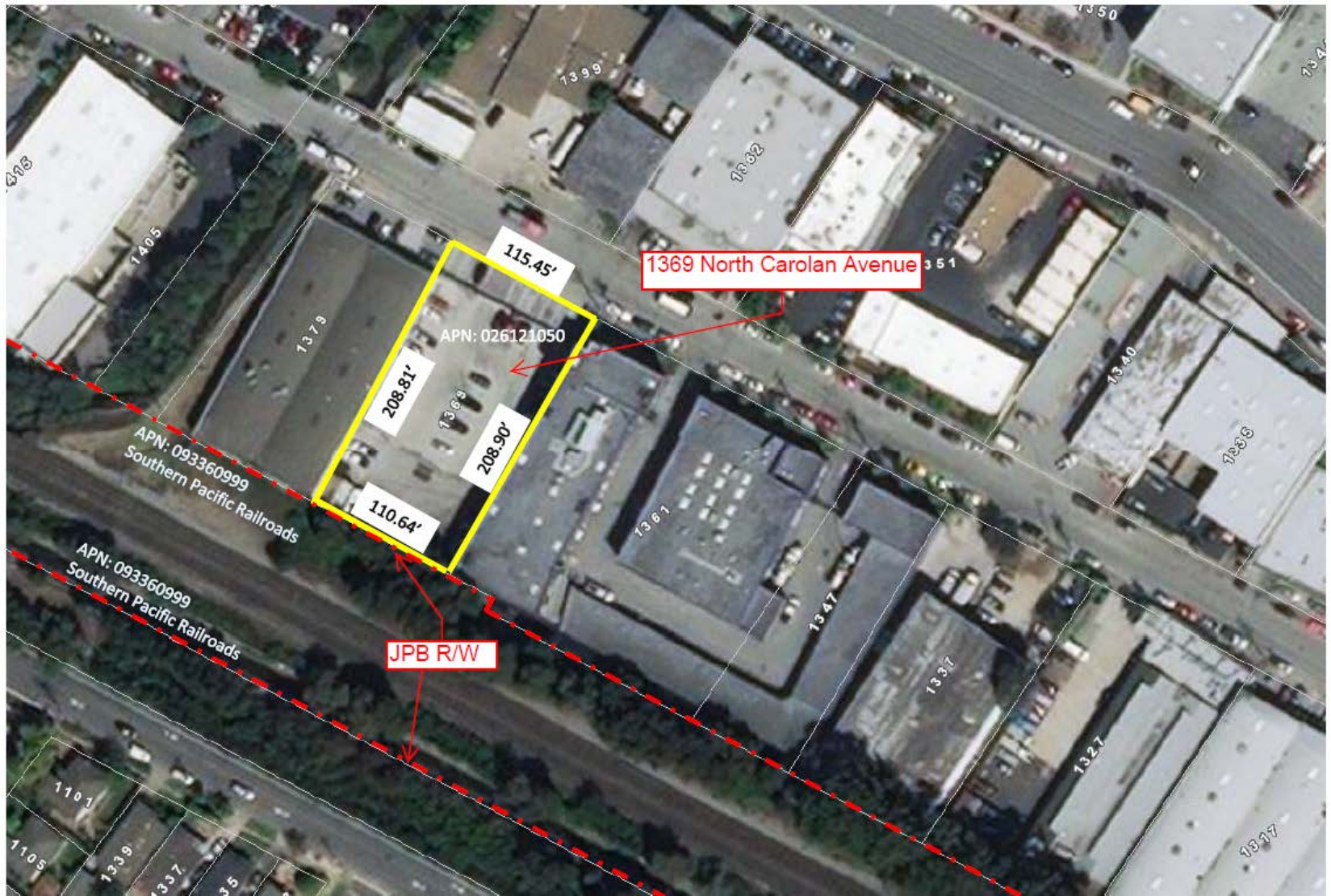
The new location was selected in order to avoid conflicts with the City's future Broadway/Burlingame Grade Separation Project. Vegetation screening of PS-3 will be provided once construction is complete.

Board Meeting Details:
Date: Thursday, August 2nd
Time: 10:00 a.m.
Location: 1250 San Carlos Avenue, San Carlos, CA

Caltrain will hold additional community meetings prior to the construction of Paralleling Station 3.

For more information, please contact the project hotline at 650-399-9659 or email calmod@caltrain.com.

- On July 31, 2018, City of Burlingame offered a new site for consideration at 1369 North Carolan Avenue “east side of tracks”
- Burlingame and PCEP met and agreed to explore this option provided that Burlingame provide:
 - A property access and maintenance easement
 - 40 feet by 100 feet temporary construction easement
 - Sale of property necessary to accommodate the relocated PS-3
- Addendum #5 contains a revised resolution that reads that the JPB will delegate its authority to the Executive Director to approve 1369 North Carolan Avenue upon completion of its environmental assessment, conditioned upon Burlingame providing the above three land entitlements by August 21. If the land entitlements are not received by August 21, then the PS-3 is approved for installation at California/Mills (Option 3).



Caltrain **CalMod**



QUESTIONS